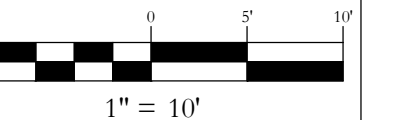


No.	DATE	REVISIONS	INT	
			MDM	MDM
1	8/29/2022	DIRT REVIEW & RESPONSE		
2	10/30/2022	DIRT REVIEW & RESPONSE		

RICHEY CONSTRUCTION
LIVE/WORK
1716 COPPER RIDGE SPUR
STEAMBOAT SPRINGS, CO 80487

Horizontal Scale



Contour Interval = 2 ft

DATE: 6-21-2022
JOB #: 1647-007
DRAWN BY: MDM
DESIGN BY: MDM
REVIEW BY: FPSE

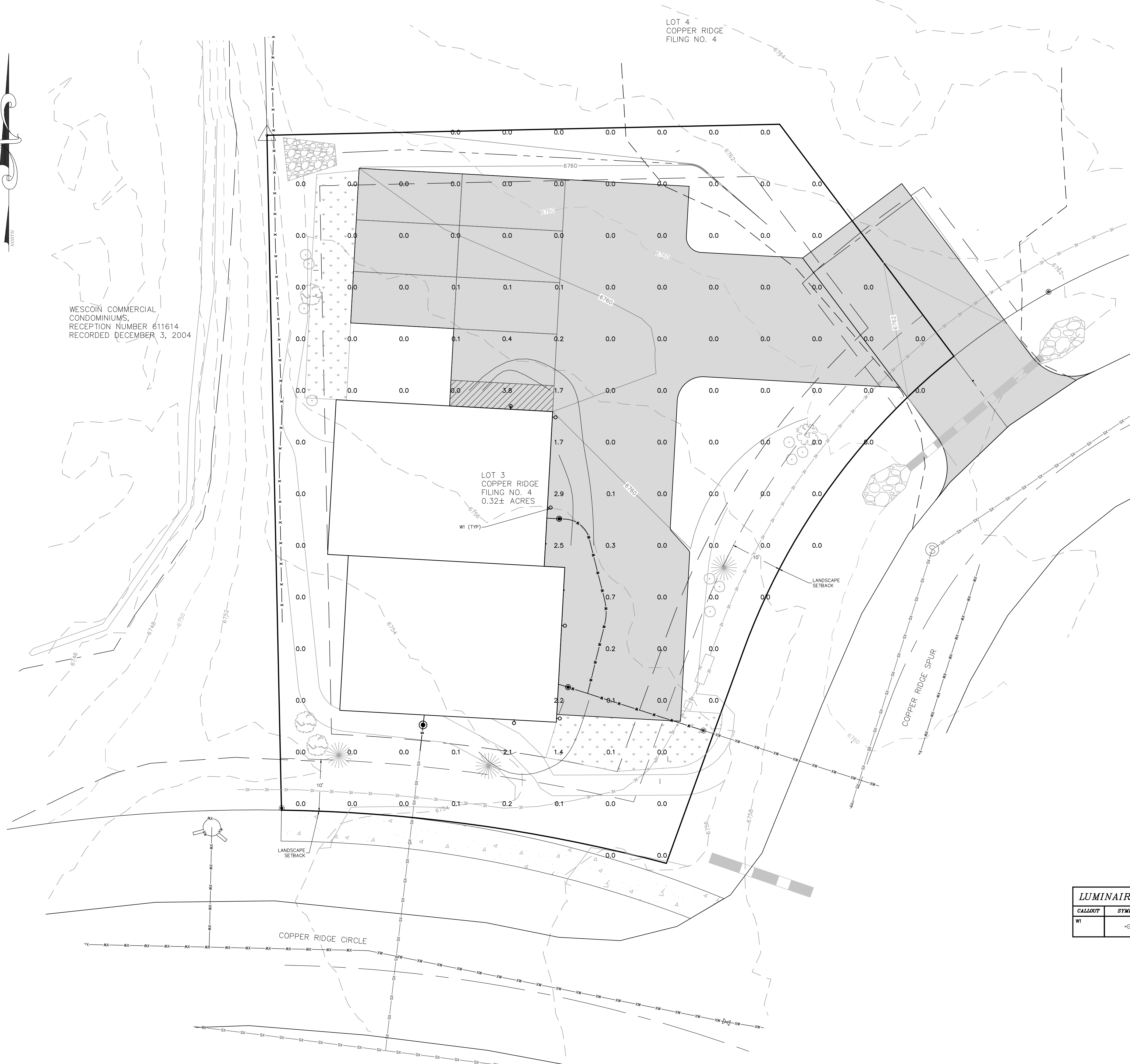
IF THIS DRAWING IS PRESENTED IN A
FORMAT OTHER THAN A4 X 36", THE
GRAPHIC SCALE SHOULD BE UTILIZED.

LIGHTING PLAN

DRAWING:

SHEET #

C5



NOTE: REFER TO THIS PLAN FOR LIGHTING INFORMATION.

11250 LED Outdoor Wall Sconce
By Kichler

LUMENS
LIGHTING SOLUTIONS
Call Us (877) 445-4486

11250 LED Outdoor Wall Sconce
By Kichler

Product Options
Finish: Textured Black

Details
Designed in 2015
Material: Metal
Dark Sky compliant, Title 24 compliant
ETL Listed Wet
Made in China

Dimensions
Fixture: Width 5", Height 7", Depth 6.5", Weight 2.29Lbs

Lighting

Lamp Type	LED Built-in
Total Lumens	374
Total Watts	11.00
Volts	120 /277 Volt
Color Temp	3000 (Soft White)
Average Lifespan	40000.00
CRl	90
Equivalent Halogen, CFL or LED Bulb Can Be Used	No

Additional Details
Product URL:
<https://www.lumens.com/11250-led-outdoor-wall-sconce-by-kichler-R362210.html>
Rating: ETL Listed Wet
ITEM#: R362210

Created August 29th, 2022

OR APPROVED SUBSTITUTE.



Notes:
Prepared by: _____
Prepared for: _____
Project: _____
Room: _____
Placement: _____
Approval: _____



LUMINAIRE SCHEDULE

CALLOUT	SYMBOL	LAMP	DESCRIPTION	BALLAST	MOUNTING	MODEL	VOLTS	QUANTITY
W1	⊕	LED	LED WALL CYLINDER	ELECTRONIC	CEILING	KICHLER, 25837-2, MDP# 11250/CP133536	120V 1P 2W	8

WESCOIN COMMERCIAL
CONDOMINIUMS,
RECEPTION NUMBER 611614
RECORDED DECEMBER 3, 2004

LOT 3
COPPER RIDGE
FILING NO. 4
0.32± ACRES

LOT 4
COPPER RIDGE
FILING NO. 4