













1 FIRST LEVEL  
DP-10.1 3/16" = 1'-0"

**NOTICE DUTY OF COOPERATION**  
 Release of these plans contemplates further cooperation among the owner, his contractor and the architect. Design and construction are complex. Although the architect and his consultants have performed their services with due care and diligence, they cannot guarantee perfection. Communication is required and every contingency cannot be anticipated. Any ambiguity or discrepancy discovered by the use of these plans shall be reported immediately to the architect. Failure to notify the architect compounds misunderstanding and increases construction costs. A failure to cooperate by a single party to the architect shall relieve the architect from responsibility for the consequences. Changes made from the plans without consent of the architect are unauthorized and shall relieve the architect of responsibility for all consequences arising out of such changes.

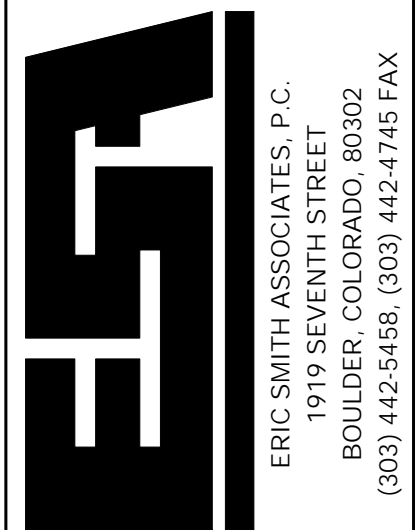
All design, documents and data prepared by Eric Smith Associates, P.C. as instruments of service shall remain property of Eric Smith Associates, P.C. and shall not be copied, changed or disclosed in any form whatsoever without first obtaining the express written consent of Eric Smith Associates, P.C.

Eric Smith Associates, P.C.

**REVISIONS**

No.	Description	Date
1	DP RESUBMITTAL	9-15-22
2	DP RESUBMITTAL	9-29-22

**PARKING GARAGE SOUTH**  
 THE LODGE AT STEAMBOAT  
 2700 VILLAGE DR.  
 STEAMBOAT SPRINGS, CO



Job Number: 20019.00  
 Date: 9/29/2022  
 Drawn By: GH  
 Checked By: TD

Project Phase  
 PLANNING SUBMITTAL

Sheet Title  
 FIRST LEVEL PLAN

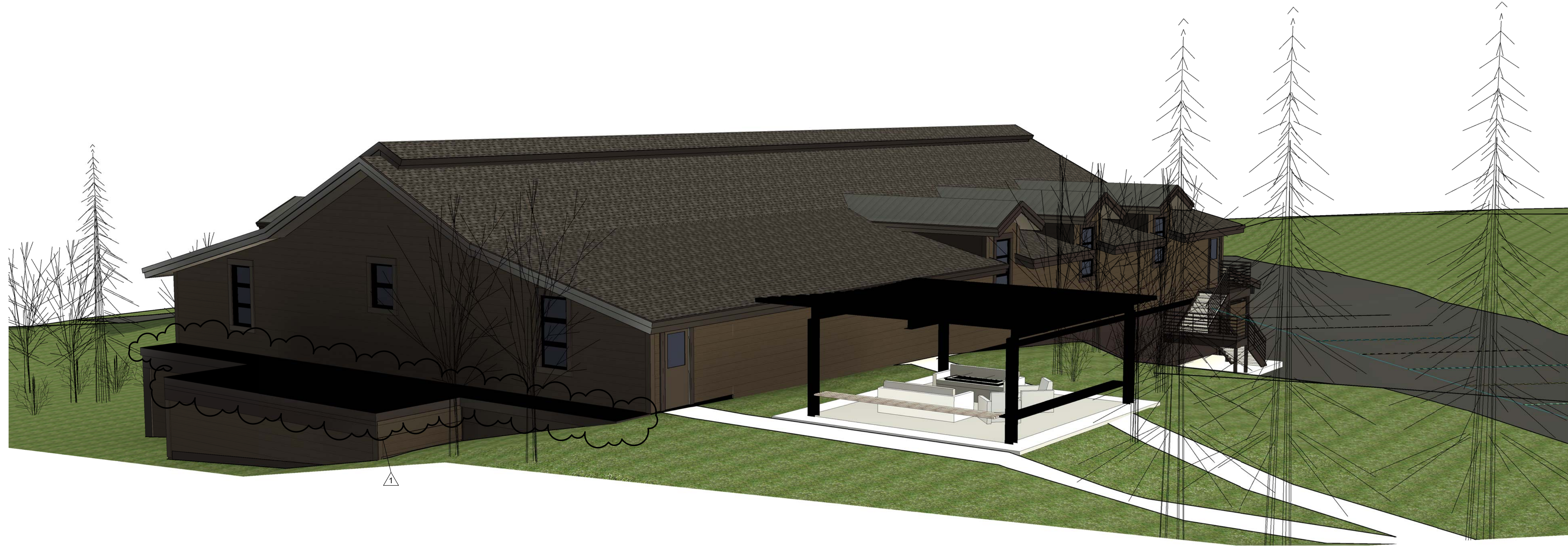
Sheet Number  
**DP-10.1**

DP RESUBMITTAL 9-29-22









1 VIEW FROM SOUTHEAST  
DP-18.1



2 VIEW FROM NORTHWEST  
DP-18.1

**NOTICE OF COOPERATION**

Release of these plans contemplates further cooperation among the owner, his contractor and the architect. Design and construction are complex. Although the architect and his consultants have performed their services with due care and diligence, they cannot guarantee perfection. Communication is imperfect and every contingency cannot be anticipated. Any ambiguity or discrepancy discovered by the use of these plans shall be reported immediately to the architect. Failure to notify the architect compounds misunderstanding and increases construction costs. A failure to cooperate by a single notice to the architect shall relieve the architect from responsibility for the consequences. Changes made from the plans without consent of the architect are unauthorized and shall relieve the architect of responsibility for all consequences arising out of such changes.

All design, documents and data prepared by Eric Smith Associates, P.C. as instruments of service shall remain property of Eric Smith Associates, P.C. and shall not be copied, changed or disclosed in any form whatsoever without first obtaining the express written consent of Eric Smith Associates, P.C.

Eric Smith Associates, P.C.

**REVISIONS**

No.	Description	Date
1	DP RESUBMITTAL	9-15-22

**PARKING GARAGE SOUTH**  
**THE LODGE AT STEAMBOAT**  
**2700 VILLAGE DR.**  
**STEAMBOAT SPRINGS, CO**



ERIC SMITH ASSOCIATES, P.C.  
 1919 SEVENTH STREET  
 BOULDER, COLORADO, 80302  
 (303) 442-5458, (303) 442-4745 FAX

Job Number: 20019.00  
 Date: 9/29/2022  
 Drawn By: GH  
 Checked By: TP

Project Phase  
 PLANNING SUBMITTAL

Sheet Title  
 MASSING 3D MODELS

Sheet Number  
**DP-18.1**