

Door Schedule										
Door Number	Type	Door					Hardware	Frame		Comments
		Width	Height	Thickness	Material	Finish		Material	Finish	
100	EXIST.	3' - 0"	7' - 10"	0' - 1 3/4"			E-05		P5	EXISTING
101	3	3' - 0"	8' - 0"	0' - 1 3/4"	WD		05	HM	P5	CLASSROOM FUNCTION LOCKSET
102	1	3' - 0"	8' - 0"					HM	P5	CASED OPENING
103	2	6' - 0"	8' - 0"	0' - 2"	WD		SL	GYP. BD. WRAP	P1	G.C. TO PROVIDE LAMINATE TRIM TO CONCEAL TOP TRACK OF DOOR
104	1	3' - 0"	8' - 0"	0' - 1 3/4"	WD		03	HM	P5	PRIVACY FUNCTION LOCKSET
105	2	6' - 0"	8' - 0"	0' - 2"	WD		SL	GYP. BD. WRAP	P1	G.C. TO PROVIDE LAMINATE TRIM TO CONCEAL TOP TRACK OF DOOR
106	1	3' - 0"	8' - 0"	0' - 1 3/4"	WD		06	HM	P5	STORAGE FUNCTION LOCKSET
108	3	3' - 0"	8' - 0"	0' - 1 3/4"	WD		08	HM	P5	CYPHER LOCK
109	1	3' - 0"	8' - 0"	0' - 1 3/4"	WD		07	HM	P5	CYPHER LOCK
110	1	3' - 0"	8' - 0"	0' - 1 3/4"	WD		04	HM	P5	CLASSROOM FUNCTION LOCKSET
111	1	3' - 0"	8' - 0"	0' - 1 3/4"	WD		01	HM	P5	PASSAGE FUNCTION LOCKSET
112	1	3' - 0"	8' - 0"	0' - 1 3/4"	WD		01	HM	P5	PASSAGE FUNCTION LOCKSET
113	1	3' - 0"	8' - 0"	0' - 1 3/4"	WD		01	HM	P5	PASSAGE FUNCTION LOCKSET
114	4	3' - 0"	8' - 0"	0' - 1 3/4"	WD		02	HM	P5	PASSAGE FUNCTION LOCKSET

- DOOR NOTES:**
- SUPPLY AND INSTALL DOOR STOPS, SILENCERS, AND 3 HINGES AT NEW SWINGING DOORS.
 - PROVIDE LOCKSET AS NOTED IN SCHEDULE.
 - PROVIDE CLOSER ONLY WHERE NOTED IN SCHEDULE.
 - ALL DOOR FRAMES TO BE WELDED. K.D. FRAMES ARE NOT ACCEPTABLE.

PLAN NOTES:

GENERAL NOTES:

PROVIDE BLOCKING AT ALL WALL MOUNTED ACCESORITES, HARDWARE AND WALL HUNG CABINETRY.

VERIFY AND COORDINATE ALL REQUIREMENTS FOR OWNER FURNISHED ITEMS PRIOR TO PERFORMING ANY WORK THAT INVOLVES THOSE ITEMS.

PROVIDE PAINTED ACCESS PANELS IN WALLS AND CEILINGS AT CONCEALED ITEMS SUCH AS VALVES, CONTROLS, SWITCHES OR ANY ITEMS THAT REQUIRE ACCESS. G.C. TO DETERMINE ACCESS PANEL LOCATIONS WITH ARCHITECT PRIOR TO INSTALLATION.

REFER TO SHEET AG003 FOR PARTIONS TYPE INFORMATION

U.N.O. SET DOOR FRAME 2" FROM FINISHED FACE OF INTERSECTING WALL.

PLAN NOTES:

A. G.C. TO SUPPLY AND INSTALL 4 X 8 SHEET FIRE REDARDANT PLYWOOD. PAINT WHITE LEAVING AT LEAST ONE LABEL EXPOSED. SET BOTTOM OF SHEET AT TOP OF BASE.

B. FURNITURE SUPPLIED AND INSTALLED BY OWNER.

C. G.C. TO SUPPLY AND INSTALL (6) 12" DEEP PLASTIC LAMINATE SHLEVES ON HEAVY DUTY STANDARDS AND BRACKETS

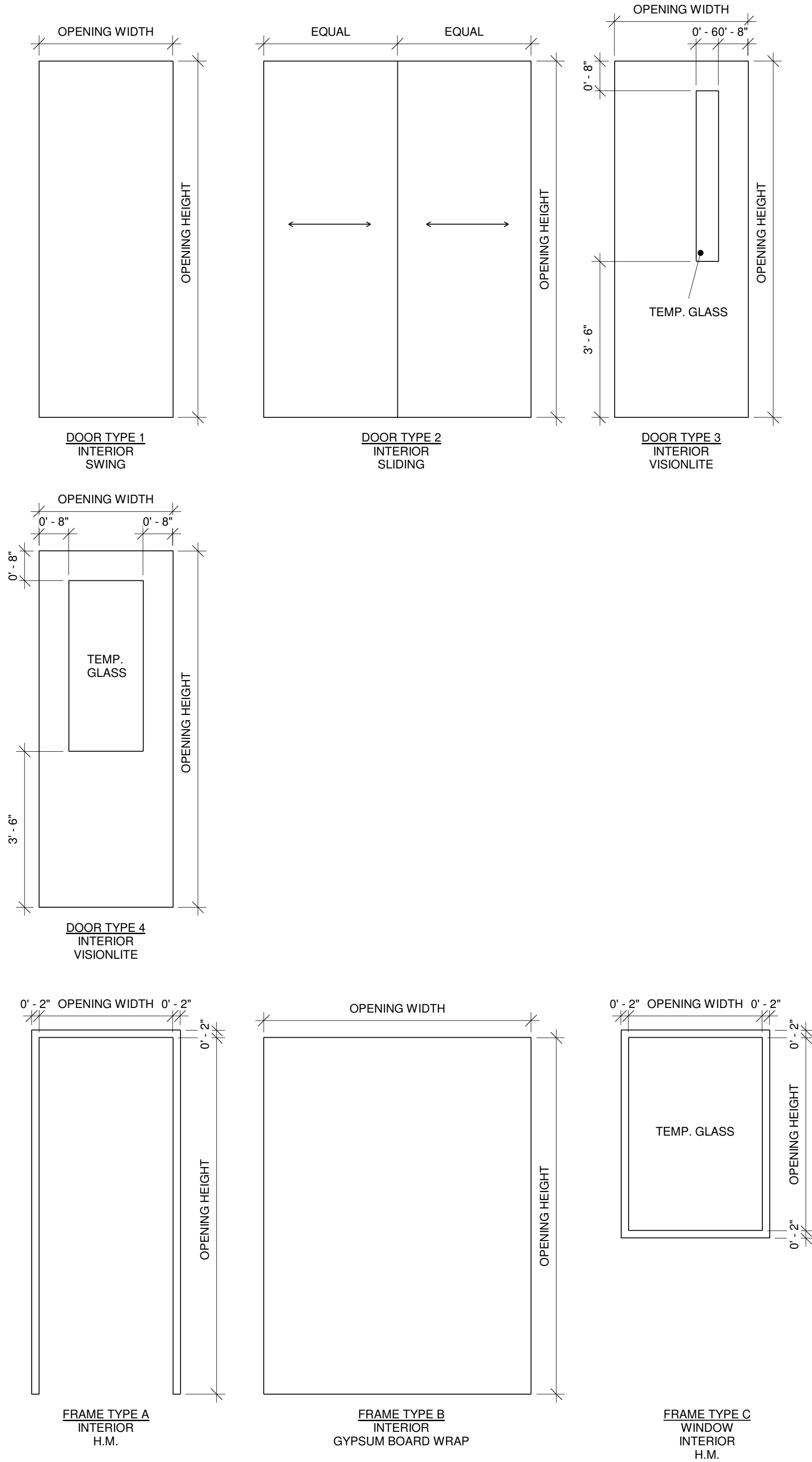
D. LIMITED NURSE CALL SYSTEM. G.C. TO COORDINATE WITH USERS

E. FLOOR SINK

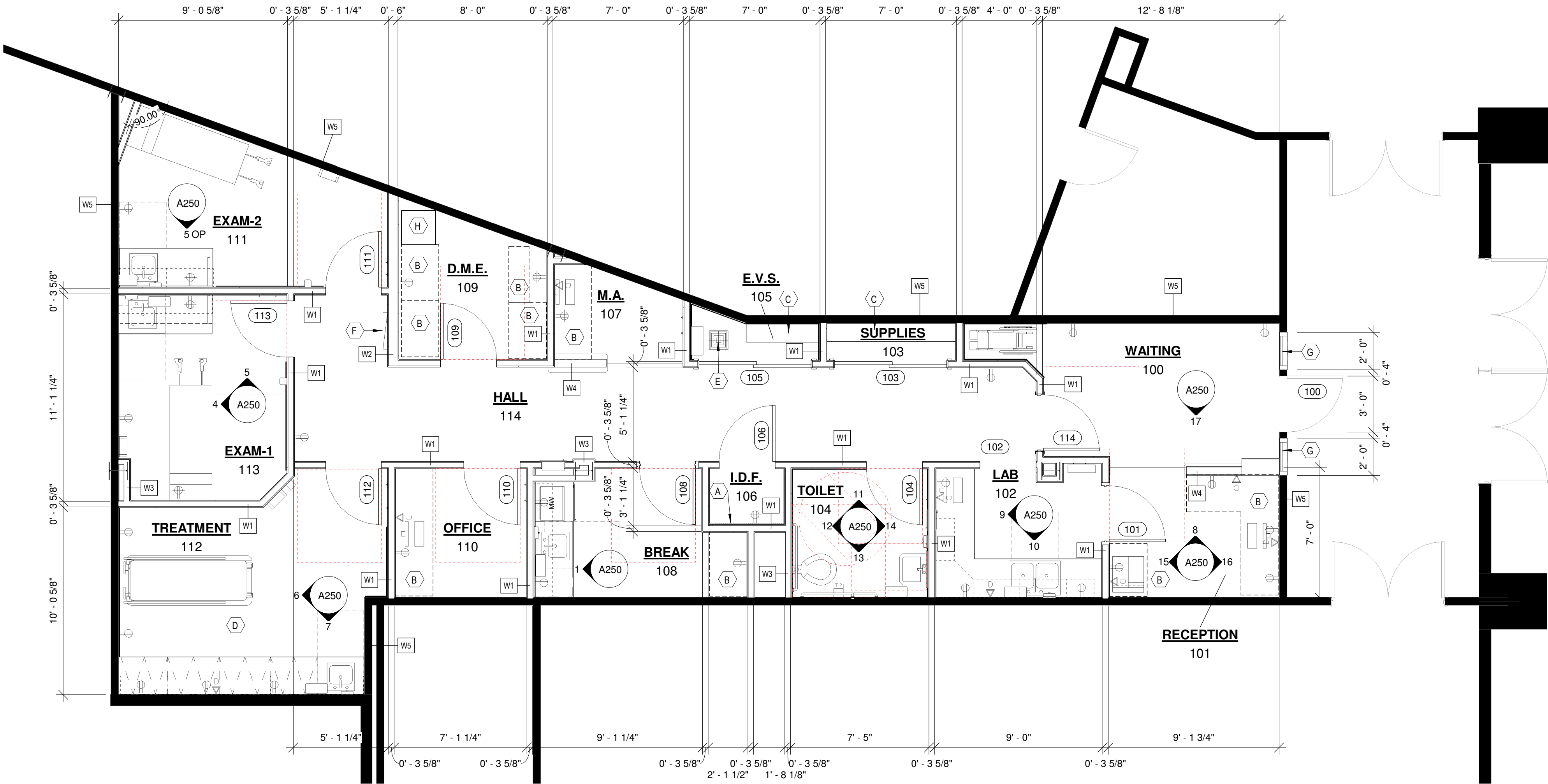
F. SEMI-RECESSED ELECTRICAL PANEL

G. CUT OPENING IN EXISTING PARTITION FOR NEW WINDOW. SUPPLY AND INSTALL TEMPERED GLASS IN ALUMINUM STOREFRONT TO MATCH BUILDING STANDARD.

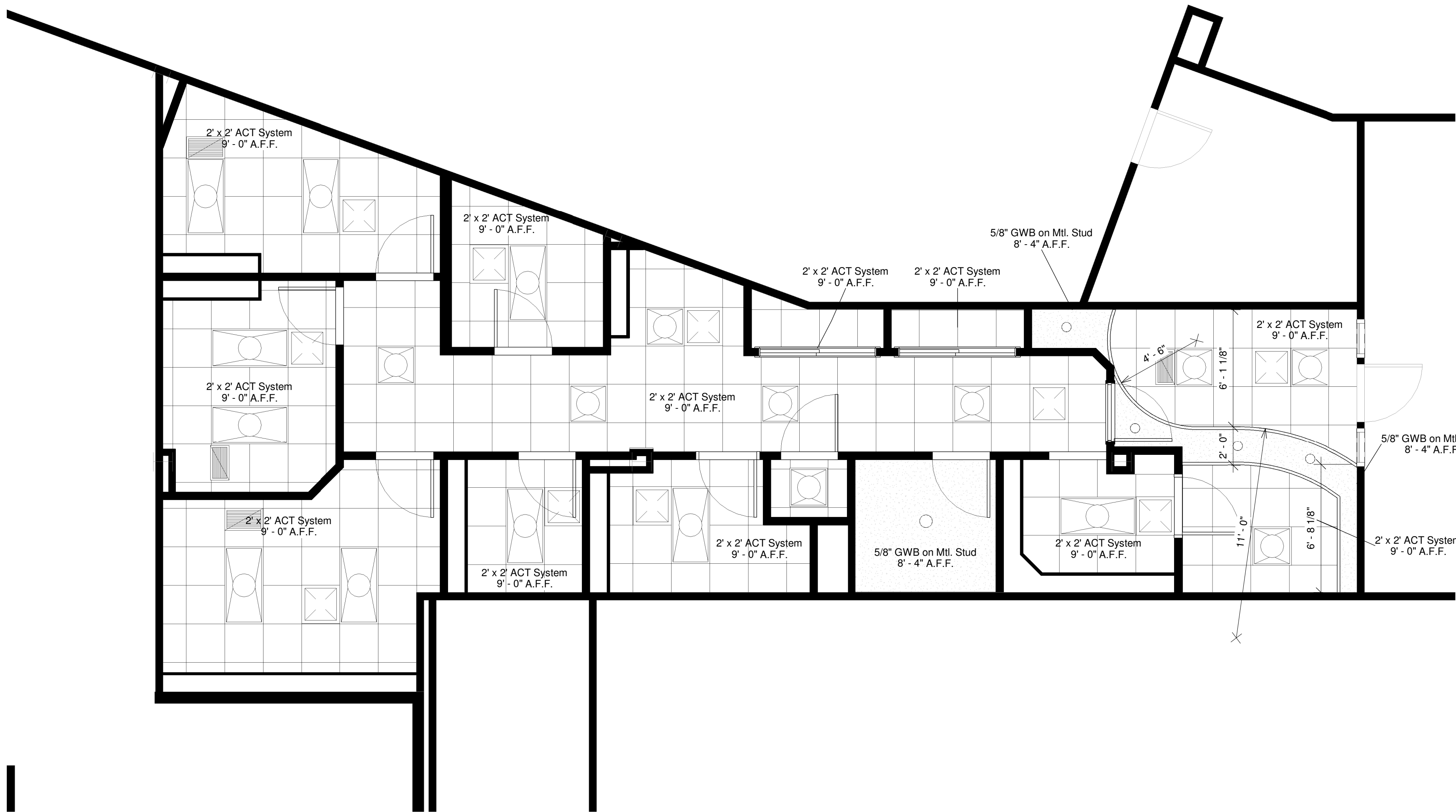
H. TRANSFORMER. RE: ELECTRICAL



2 DOOR/WINDOW AND FRAME TYPES
A111 1/2" = 1'-0"



2
A192 FINISH PLAN
1/4" = 1'-0"



1
A192 REFLECTED CEILING PLAN
1/4" = 1'-0"

FINISHES:

FLOOR:

LVT LUXURY VINYL TILE: SHAW CONTRACT "GRAIN" 0502V
DIRECT GLUE, PARCHMENT 06411 7" X 48"
CP CARPET TILE: MANNINGTON "SOCIAL"
INKED 14199 24" X 24"

BASE:

RCB RUBBER COVE BASE: JOHNSONITE 4" COVE
PEBBLE 32, ROLLED GOODS, JOB FORMED CORNERS
PTB COVED PORCELAIN TILE: STONE SOURCE "Q-STONE"
GREY 6" X 12" COVE BASE TILE

WALLS:

P1 MAIN PAINT COLOR: SHERWIN WILLIAMS
SW0050, CLASSIC LIGHT, EGGSHELL
P2 EPOXY PAINT: SHERWIN WILLIAMS
SW0050, CLASSIC LIGHT, EPOXY
P3 ACCENT PAINT
P4 ACCENT PAINT
P5 PAINT DOOR FRAME: SHERWIN WILLIAMS
SW7045 INTELLECTUAL GREY, SEMIGLOSS ENAMEL
WP INPRO WALL PANELS
PT PORCELAIN TILE: DAL TILE
VOLUME 1.0, REVERB ASH VL74

CEILING:

ACT SUSPENDED CEILING TILE IN PREFINISHED GRID
GYP GYPSUM BOARD CEILING/SOFFIT: SHERWIN WILLIAMS
SW7004 SNOWBOUND EGGSHELL

PLASTIC LAMINATE:

PL1 NOT USED
PL2 CABINETS: FORMICA
WALNUT RIFTWOOD 9283

SOLID SURFACE:

SS1 COUNTERS: CORIAN
LINEN, SATIN FINISH

CORNER GUARDS:

CG INPRO

FINISH PLAN GENERAL NOTES:

ALL FLOOR MATERIAL TO BE BUTT JOINED AT TRANSITIONS ON
CENTER OF DOOR WHERE APPLICABLE, UNLESS NOTED
OTHERWISE.

PROVIDE EDGE PROTECTION AND TRANSITION PROFILES
WHERE FLOOR MATERIAL CAHNGES AND/OR STOPS
PAINT ALL EXPOSED PIPES, AIR GRILLES, ETC. TO MATCH
ADJACENT WALL COLOR.

ALL FLOORING MATERIAL TO CONTINUE UNDERCASEWORK TO
TOE KICK OR TO WALL IF OPEN.

RCP GENERAL NOTES:

ALL CEILING ELEVATIONS DIMENSIONED FROM FINISHED
FLOOR

CENTER DEVICES, SPRINKLER HEADS, ETC. IN CENTER
OF TILE

PROVIDE CONTINUOUS SOUND BATT INSULATION ABOVE
THE TOILET ROOM.

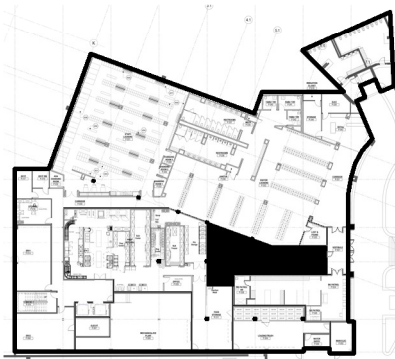
FIRE SPRINKLER CONTRACTOR TO REFERENCE ALL
DRAWINGS AND SPECIFICATIONS FOR DETERMINING
COVERAGE AND HEAD LAYOUT.

FLOOR FINISH LEGEND



Room Schedule						
Room Number	Room Name	Floor Finish	Base Finish	Wall Finish	Ceiling Finish	Comments
100	WAITING	SV	RCB	P1/WP	ACT/GYP	ENPRO WALL PROTECTION WHERE NOTED
101	RECEPTION	CPT	RCB	P1	ACT/GYP	
102	LAB	SV	RCB	P1	ACT	
103	SUPPLIES	SV	RCB	P1	ACT	ENPRO WALL PROTECTION WHERE NOTED
104	TOILET	SV	CT	CT/P2	GYP	
105	E.V.S.	SV	RCB	P1/WP	ACT	
106	I.D.F.	SDT	RCB	P1	ACT	ENPRO WALL PROTECTION WHERE NOTED
107	M.A.	CPT	RCB	P1	ACT	
108	BREAK	SV	RCB	P1	ACT	
109	D.M.E.	SV	RCB	P1	ACT	ENPRO WALL PROTECTION WHERE NOTED
110	OFFICE	CPT	RCB	P1	ACT	
111	EXAM-2	SV	RCB	P1/WP	ACT	
112	TREATMENT	SV	RCB	P1/WP	ACT	ENPRO WALL PROTECTION WHERE NOTED
113	EXAM-1	SV	RCB	P1/WP	ACT	
114	HALL	SV	RCB	P1/WP	ACT	

Accessories Schedule			
Type Mark	Description	Manufacturer	Comments
AED	Recessed Wall Mounted AED	Activar Construction Products Group	
CH1	Coat Hook		O.F.C.I.
CH2	Coat Hook Accessible		O.F.C.I.
CMP	Desk top computer.		O.F.O.I.
DISP	Chemical Dispenser	Quattro Select	O.F.C.I.
ET	Ritter 203 Treatment Table	Midmark	O.F.O.I.
EW	Wall Mounted Eye wash		O.F.C.I.
FEC	Fire Extinguisher Cabinet		C.F.C.I.
GB	Grab Bars		C.F.C.I.
GUR	Strecher	Hill-Rom Co.	O.F.O.I.
M	Mirror	Bradley Corporation	C.F.C.I.
MULT	Desk top copier.		O.F.O.I.
MW	Microwave		O.F.O.I.
PT	Paper Towel Dispenser	GP PRO Georgia-Pacific LLC	O.F.C.I.
SAN	Hand Sanitizer		O.F.C.I.
SC	Sharps Container		O.F.C.I.
SD	Surface Mounted Soap Dispenser	Bobrick Washroom Equipment, Inc.	O.F.C.I.
SPEC	Pass-through specimen cabinet	Bobrick Washroom Equipment, Inc.	C.F.C.I.
TP	Toilet Paper Holder		O.F.C.I.
UCR	Under Counter Refrigerator		O.F.O.I.
WC	Folding patient wheelchair.		O.F.O.I.



LOWER LEVEL
1" = 100'-0"

NOTICE: DUTY OF COOPERATION
Release of these plans contemplates further cooperation among the owner, his contractor and the architect. Design and construction are complex. Although the architect and his consultants have performed their services with due care and diligence, they cannot guarantee perfection. Communication is imperfect and every contingency cannot be anticipated. Any ambiguity or discrepancy discovered by the use of these plans shall be reported immediately to the architect. Failure to notify the architect compounds misunderstanding and increases construction costs. A failure to cooperate by a simple notice to the architect shall relieve the architect from responsibility for the consequences. Changes made from the plans without consent of the architect are unauthorized and shall relieve the architect of responsibility for all consequences arising out of such changes.
All design, documents and data prepared by Eric Smith Associates, P.C. as instruments of service shall remain property of Eric Smith Associates, P.C. and shall not be copied, changed or disclosed in any form whatsoever without first obtaining the express written consent of Eric Smith Associates, P.C.
Eric Smith Associates, P.C.

REVISIONS		
No.	Description	Date

uhealth
YVMC Mountain Clinic
2305 Mount Werner Circle
Suite P.027
Steamboat Springs, Colorado

ES
ERIC SMITH ASSOCIATES, P.C.
1919 SEVENTH STREET
BOULDER, COLORADO, 80302
(303) 442-5468, (303) 442-4748 FAX

Job Number: 22016
Date: 8/ 4/ 22
Drawn By: JP
Checked By: Checker

Project Phase
CONDITIONAL USE

Sheet Title
REFLECTED CEILING- FINISH
PLANS

Sheet Number
A192