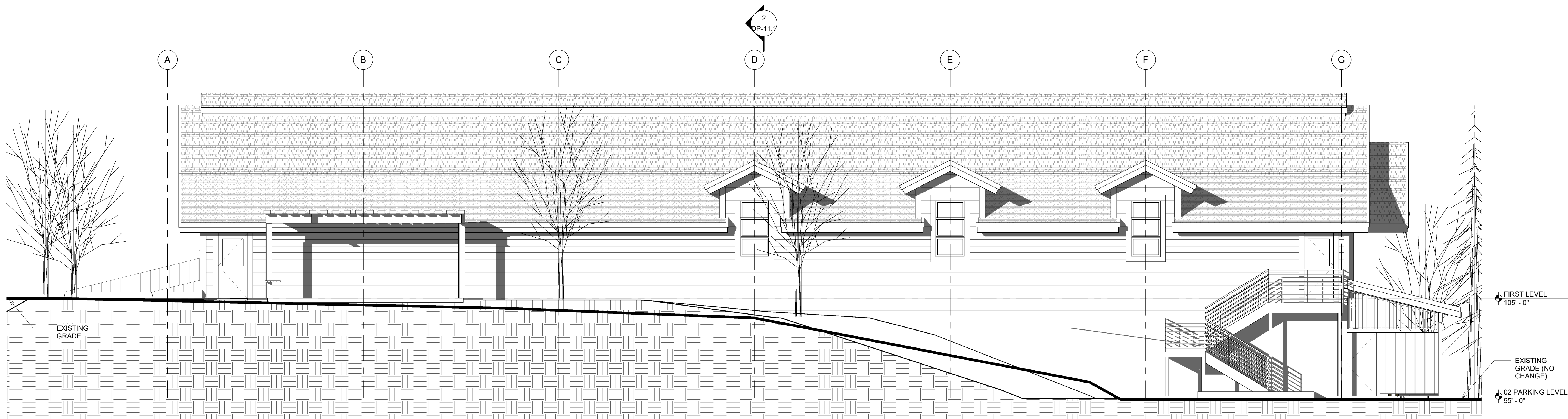


1 NORTH ELEVATION
DP-3.1 3/16" = 1'-0"



2 EAST ELEVATION
DP-3.1 3/16" = 1'-0"

NOTICE: DUTY OF COOPERATION
Release of these plans contemplates further cooperation among the owner, his contractor and the architect. Design and construction are complex. Although the architect and his consultants have performed their services with due care and diligence, they cannot guarantee perfection. Communication is imperfect and every contingency cannot be anticipated. Any ambiguity or discrepancy discovered by the use of these plans shall be reported immediately to the architect. Failure to notify the architect compounds misunderstanding and increases construction costs. A failure to cooperate by a single notice to the architect shall relieve the architect from responsibility for the consequences. Changes made from the plans without consent of the architect are unauthorized and shall relieve the architect of responsibility for all consequences arising out of such changes.

All design, documents and data prepared by Eric Smith Associates, P.C. as instruments of service shall remain property of Eric Smith Associates, P.C. and shall not be copied, changed or disclosed in any form whatsoever without first obtaining the express written consent of Eric Smith Associates, P.C.

Eric Smith Associates, P.C.

REVISIONS

No.	Description	Date

PARKING GARAGE SOUTH
THE LODGE AT STEAMBOAT
2700 VILLAGE DR.
STEAMBOAT SPRINGS, CO



Job Number: 20019.00
Date: 7/19/2021
Drawn By: GH
Checked By: TD

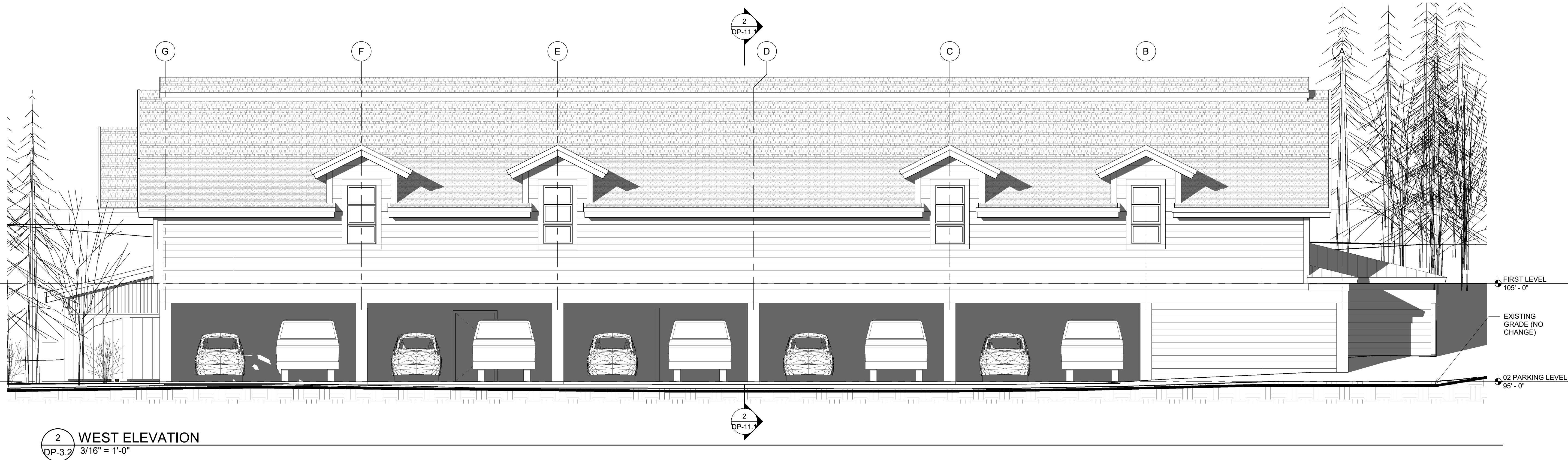
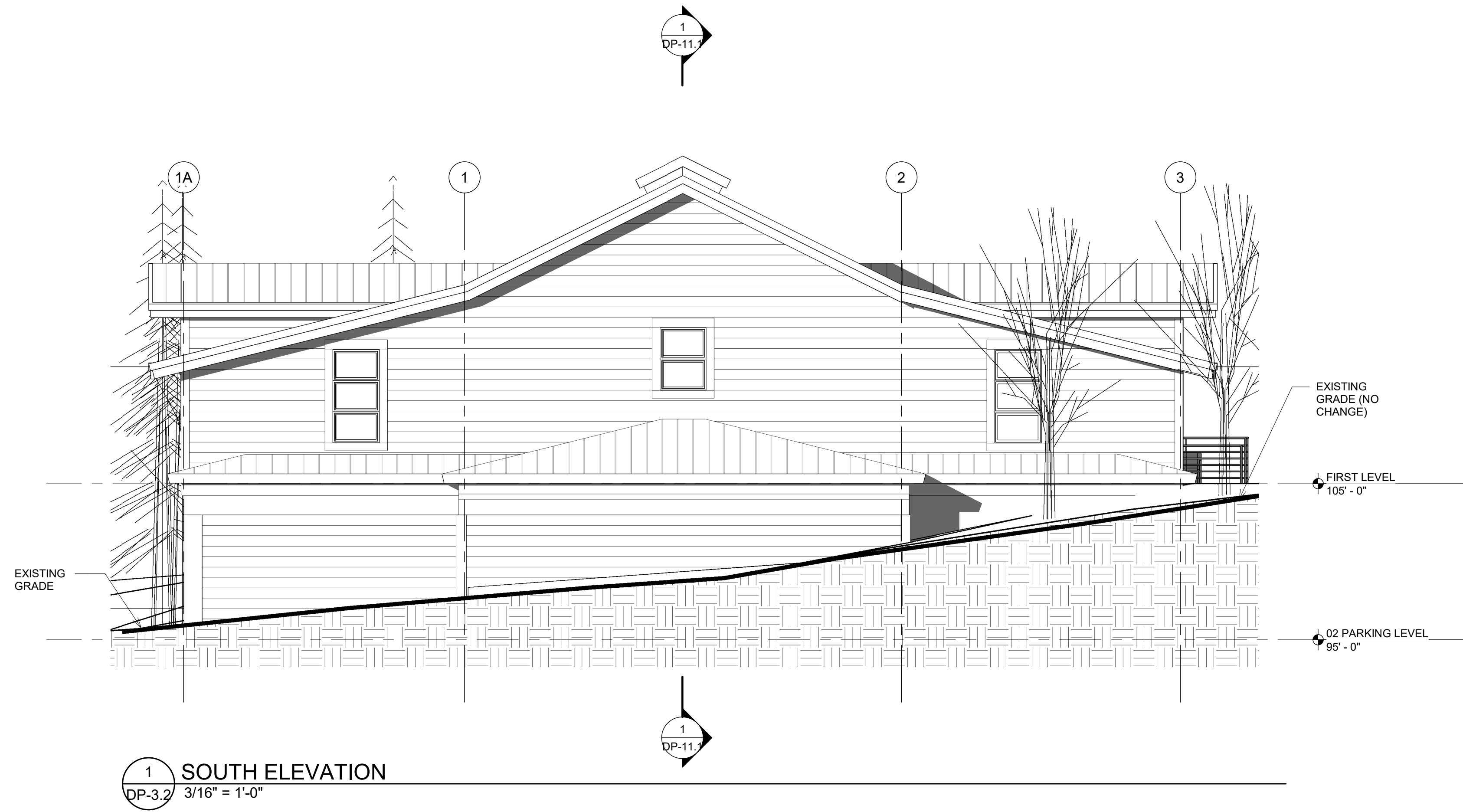
Project Phase
PLANNING SUBMITTAL

Sheet Title
BUILDING ELEVATIONS

Sheet Number
DP-3.1

DP RESUBMITTAL 7-20-22

7/19/2022 11:38:38 AM FILE: 20019.00 The Lodge Parking Structure_SOUTH DP Submittal_R22.rvt



NOTICE OF COOPERATION
 Release of these plans contemplates further cooperation among the owner, his contractor and the architect. Design and construction are complex. Although the architect and his consultants have performed their services with due care and diligence, they cannot guarantee perfection. Communication is imperfect and every contingency cannot be anticipated. Any ambiguity or discrepancy discovered by the use of these plans shall be reported immediately to the architect. Failure to notify the architect compounds misunderstanding and increases construction costs. A failure to cooperate by a single notice to the architect shall relieve the architect from responsibility for the consequences. Changes made from the plans without consent of the architect are unauthorized and shall relieve the architect of responsibility for all consequences arising out of such changes.

All design, documents and data prepared by Eric Smith Associates, P.C. as instruments of service shall remain property of Eric Smith Associates, P.C. and shall not be copied, changed or disclosed in any form whatsoever without first obtaining the express written consent of Eric Smith Associates, P.C.

Eric Smith Associates, P.C.

REVISIONS

No.	Description	Date

PARKING GARAGE SOUTH
 THE LODGE AT STEAMBOAT
 2700 VILLAGE DR.
 STEAMBOAT SPRINGS, CO



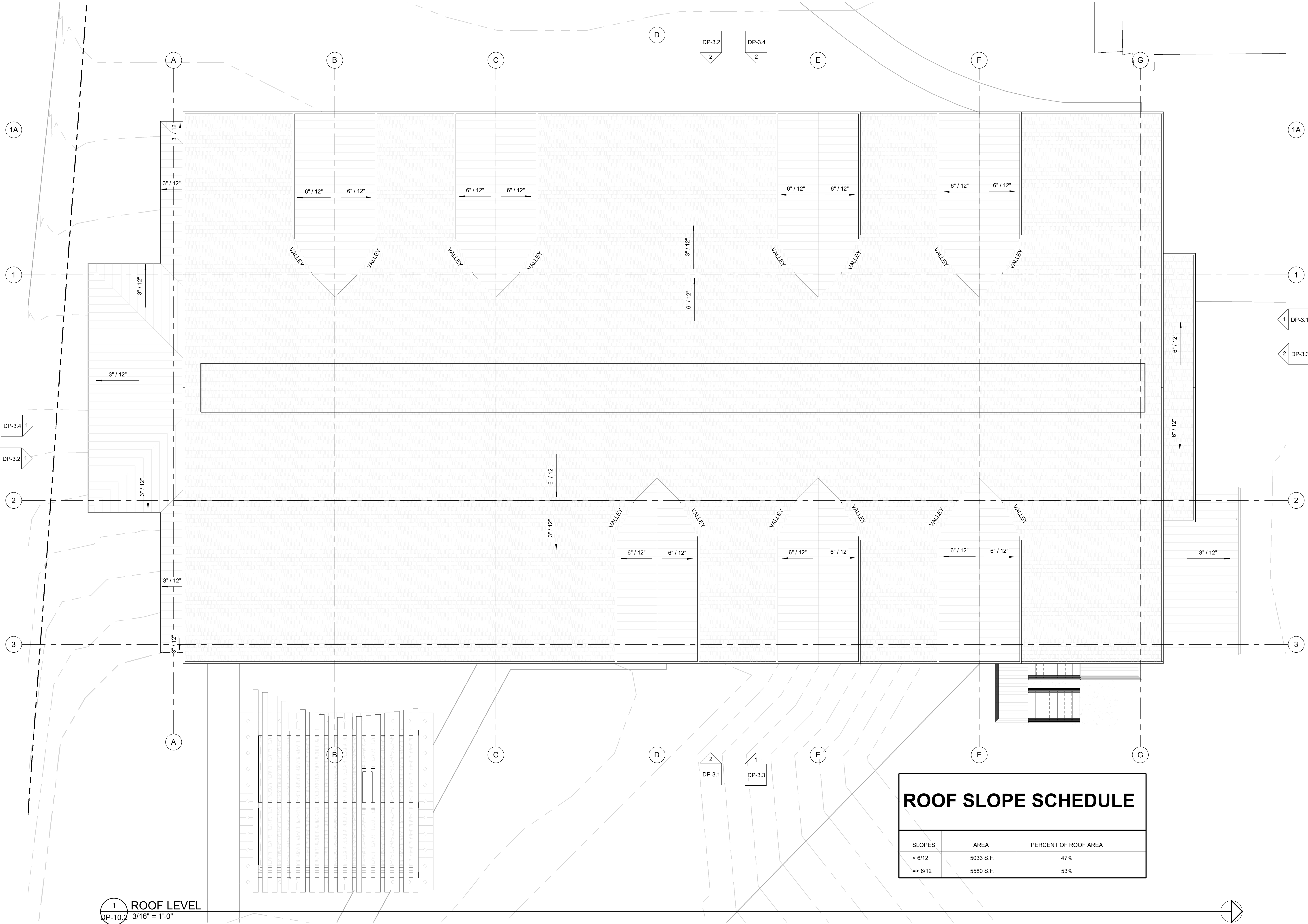
Job Number: 20019.00
 Date: 7/19/2021
 Drawn By: GH
 Checked By: TD

Project Phase
 PLANNING SUBMITTAL

Sheet Title
 BUILDING ELEVATIONS

Sheet Number
DP-3.2

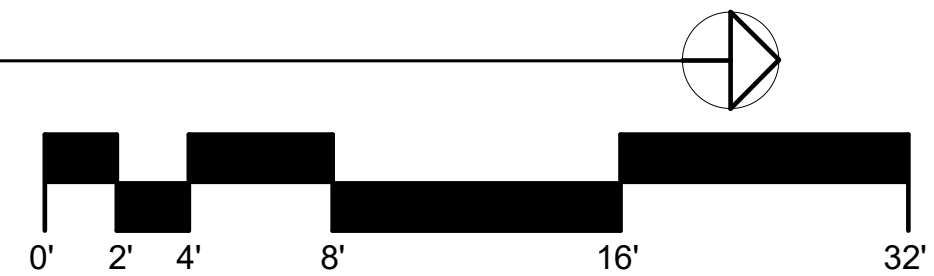
DP RESUBMITTAL 7-20-22



1 ROOF LEVEL
 DP-10.2 3/16" = 1'-0"

ROOF SLOPE SCHEDULE

SLOPES	AREA	PERCENT OF ROOF AREA
< 6/12	5033 S.F.	47%
=> 6/12	5580 S.F.	53%



NOTICE OF COOPERATION
 Release of these plans contemplates further cooperation among the owner, his contractor and the architect. Design and construction are complex. Although the architect and his consultants have performed their services with due care and diligence, they cannot guarantee perfection. Communication is imperfect and every contingency cannot be anticipated. Any ambiguity or discrepancy discovered by the use of these plans shall be reported immediately to the architect. Failure to notify the architect compounds misunderstanding and increases construction costs. A failure to cooperate by a single notice to the architect shall relieve the architect from responsibility for the consequences. Changes made from the plans without consent of the architect are unauthorized and shall relieve the architect of responsibility for all consequences arising out of such changes.

All design, documents and data prepared by Eric Smith Associates, P.C. as instruments of service shall remain property of Eric Smith Associates, P.C. and shall not be copied, changed or disclosed in any form whatsoever without first obtaining the express written consent of Eric Smith Associates, P.C.
 Eric Smith Associates, P.C.

REVISIONS

No.	Description	Date

PARKING GARAGE SOUTH
 THE LODGE AT STEAMBOAT
 2700 VILLAGE DR.
 STEAMBOAT SPRINGS, CO

ESA
 ERIC SMITH ASSOCIATES, P.C.
 1919 SEVENTH STREET
 BOULDER, COLORADO, 80302
 (303) 442-5488, (303) 442-4748 FAX

Job Number: 20019.00
 Date: 7/19/2021
 Drawn By: GH
 Checked By: TD

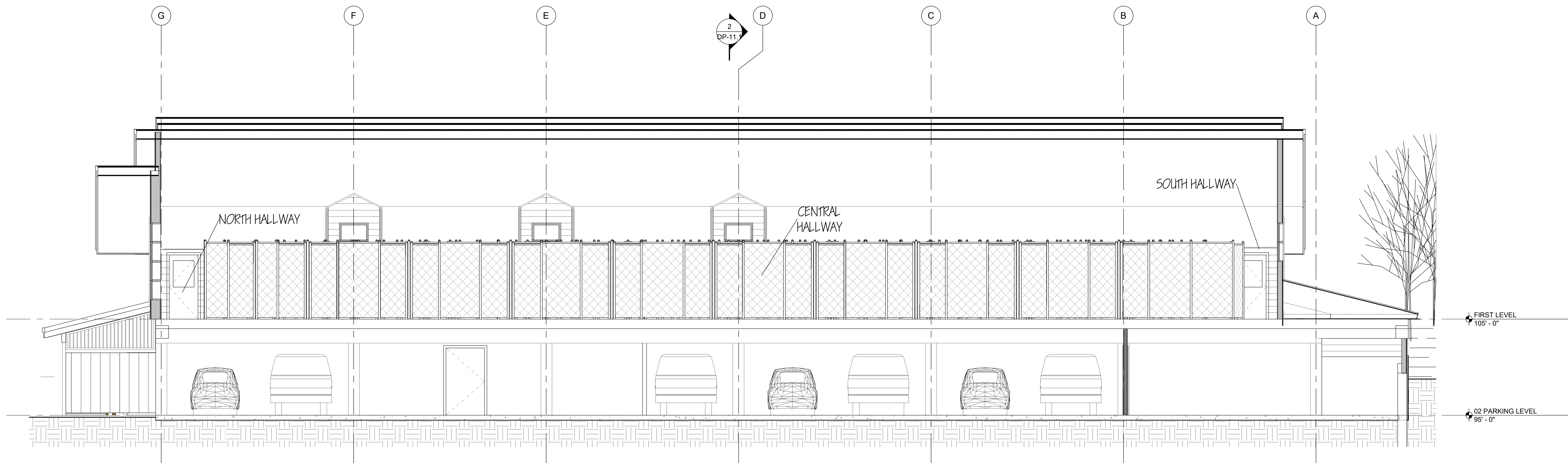
Project Phase
 PLANNING SUBMITTAL

Sheet Title
 ROOF LEVEL PLAN

Sheet Number
DP-10.2

DP RESUBMITTAL 7-20-22

7/19/2022 11:39:45 AM FILE: 20019.00 The Lodge Parking Structure_SOUTH DP_Submittal_R22.rvt



1 NORTH-SOUTH SITE SECTION
 DP-11.1 3/16" = 1'-0"



2 EAST-WEST SITE SECTION
 DP-11.1 1/4" = 1'-0"

NOTICE OF COOPERATION
 Release of these plans contemplates further cooperation among the owner, his contractor and the architect. Design and construction are complex. Although the architect and his consultants have performed their services with due care and diligence, they cannot guarantee perfection. Communication is imperfect and every contingency cannot be anticipated. Any ambiguity or discrepancy discovered by the use of these plans shall be reported immediately to the architect. Failure to notify the architect compounds misunderstanding and increases construction costs. A failure to cooperate by a single notice to the architect shall relieve the architect from responsibility for the consequences. Changes made from the plans without consent of the architect are unauthorized and shall relieve the architect of responsibility for all consequences arising out of such changes.

All design, documents and data prepared by Eric Smith Associates, P.C. as instruments of service shall remain property of Eric Smith Associates, P.C. and shall not be copied, changed or disclosed in any form whatsoever without first obtaining the express written consent of Eric Smith Associates, P.C.

Eric Smith Associates, P.C.

REVISIONS

No.	Description	Date

PARKING GARAGE SOUTH
 THE LODGE AT STEAMBOAT
 2700 VILLAGE DR.
 STEAMBOAT SPRINGS, CO



Job Number: 20019.00
 Date: 7/15/2021
 Drawn By: GH
 Checked By: TD

Project Phase
 PLANNING SUBMITTAL

Sheet Title
 SITE SECTIONS

Sheet Number
DP-11.1

DP RESUBMITTAL 7-20-22

