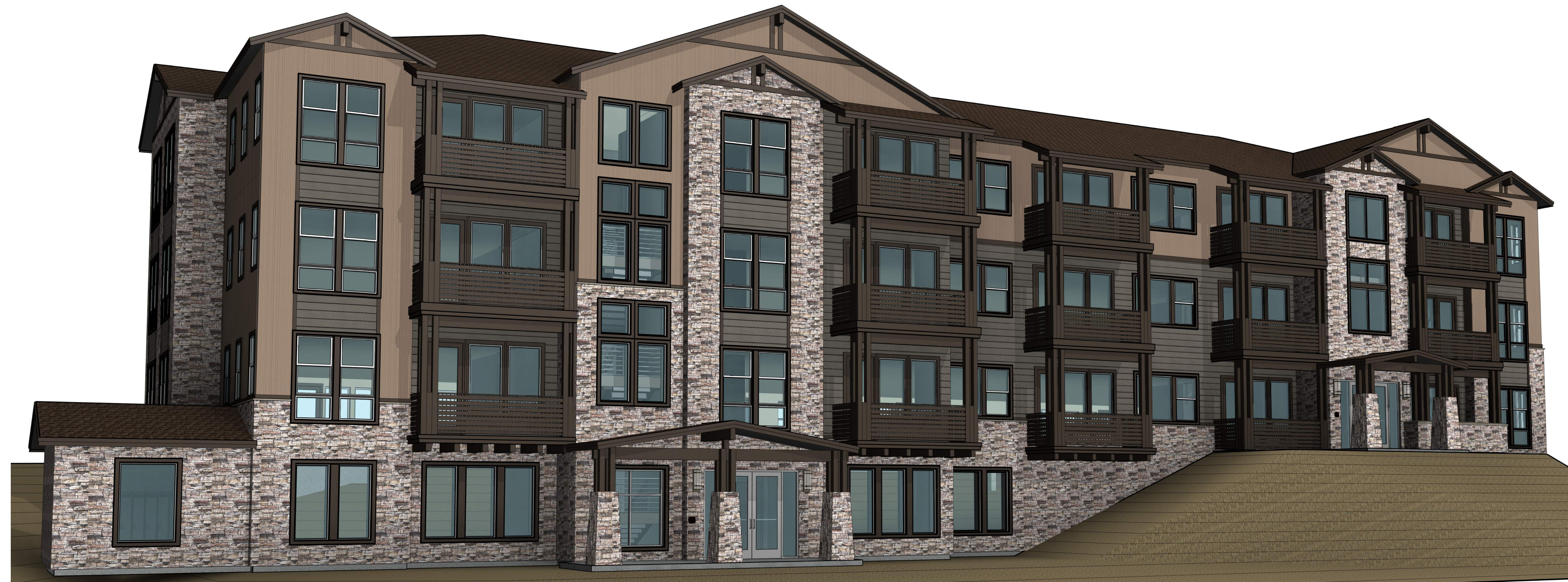




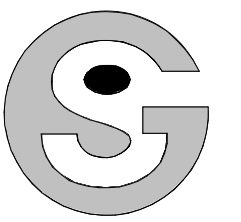
2 BUILDING 2 - PERSPECTIVE



1 BUILDING 1A - PERSPECTIVE

| BUILDING VARIATION STANDARDS |  |        |        |         |   |
|------------------------------|--|--------|--------|---------|---|
| SECTION                      | ITEM                                   | BLDG A | BLDG B | BLDG 7A | COMMENTS  |
| 437.H.1.A                    | i. WALL PLANE RELIEF                   | X      | X      | X       | WALL PLANE ARTICULATION VARIES  |
|                              | ii. PORCHES                            | X      | X      | X       |   |
|                              | iii. BALCONIES                         | X      | X      | X       |   |
|                              | iv. BAY OR BOX WINDOWS                 |        |        |         |   |
|                              | v. VARIATION IN WINDOW SIZE            |        |        |         |   |
|                              | vi. VARIATION IN MATERIALS             | X      | X      | X       |   |
|                              | vii. VARIATIONS IN ROOF FORMS          | X      | X      | X       |   |
|                              | REQUIRED TOTAL                         | 3      | 3      | 3       |   |
|                              |  | 4      | 4      | 4       |   |
| 437.H.1.C                    | i. VARIATION IN LENGTH OF ≥30%         |        |        | X       | BUILDING 7A IS 35% SHORTER THAN BUILDING A & B<br>BUILDING 7A HAS A 32% SMALLER FOOTPRINT THAN BUILDING A & B |
|                              | ii. VARIATION IN THE FOOTPRINT OF ≥30% |        |        | X       |   |
|                              | iii. VARIATION IN THE HOUSING TYPE     |        |        |         |   |
|                              | iv. BUILDING HEIGHT AND ROOF FORM      | X      | X      |         |   |
|                              | v. VARIATION IN COLOR AND MATERIAL     | X      | X      |         |   |
|                              | REQUIRED TOTAL                         | 2      | 2      | 2       |   |
|                              |  | 2      | 2      | 2       |   |

\*3 BUILDING MODELS PROVIDED.  
3 REQUIRED PER TABLE 437-1



Godden|Sudik  
ARCHITECTS  
SEE WHAT COULD BE  
303.455.4437  
www.goddensudik.com

5975 S. Quebec Street  
Suite 250  
Centennial, CO 80111

NOT FOR  
CONSTRUCTION

COPPER RIDGE VILLAGE

STEAMBOAT SPRINGS, CO

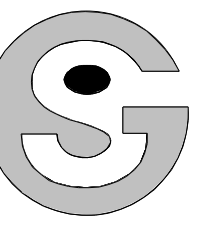
DRAWN BY:  
CHECKED BY:  
ISSUE DATE:  
12/07/2021  
REVISIONS:

|  |  |
|--|--|
|  |  |
|  |  |
|  |  |
|  |  |
|  |  |

BUILDING  
PERSPECTIVES

A0.1

© Copyright 2021  
Godden | Sudik Architects & Planners, Inc.



Godden|Sudik  
ARCHITECTS  
SEE WHAT COULD BE  
303.455.4437  
www.goddensudik.com

5975 S. Quebec Street  
Suite 250  
Centennial, CO 80111

NOT FOR  
CONSTRUCTION



COPPER RIDGE VILLAGE

STEAMBOAT SPRINGS, CO

DRAWN BY:  
CHECKED BY:  
ISSUE DATE:  
12/07/2021  
REVISIONS:

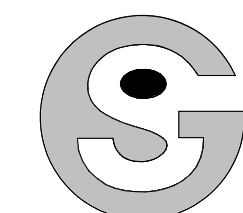
|  |  |
|--|--|
|  |  |
|  |  |
|  |  |
|  |  |
|  |  |
|  |  |
|  |  |
|  |  |
|  |  |
|  |  |

BUILDING  
PERSPECTIVES

A0.2

© Copyright 2021  
Godden | Sudik Architects & Planners, Inc.

1 BUILDING 1B - PERSPECTIVE



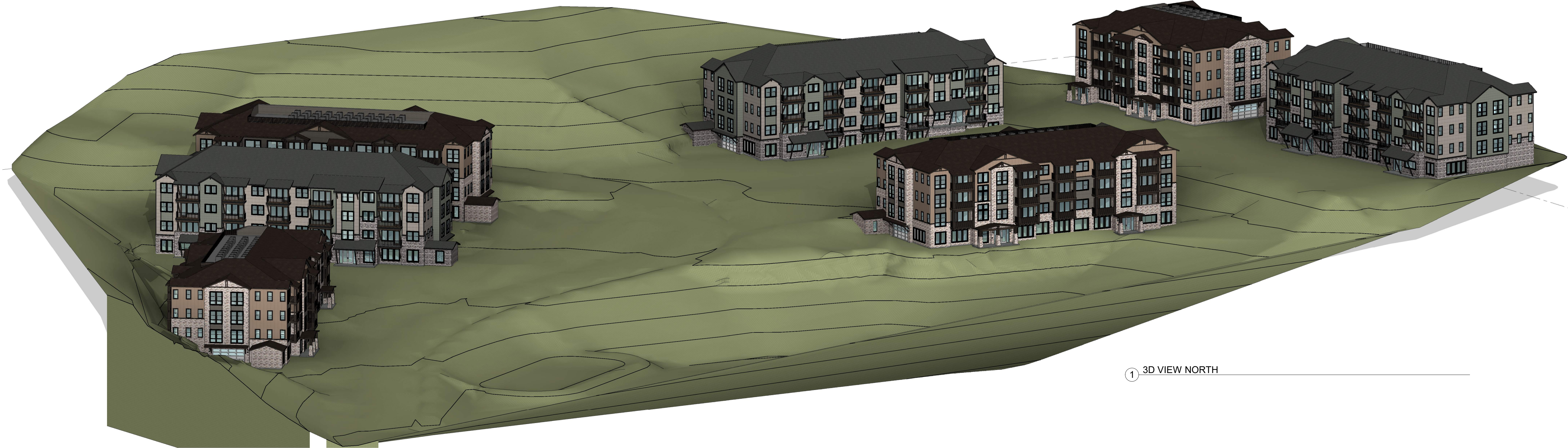
**Godden|Sudik**  
 ARCHITECTS  
 SEE WHAT COULD BE  
 303.455.4437  
 www.goddensudik.com

5975 S. Quebec Street  
 Suite 250  
 Centennial, CO 80111

NOT FOR  
 CONSTRUCTION

COPPER RIDGE VILLAGE

STEAMBOAT, CO



1 3D VIEW NORTH



2 3D VIEW SOUTH

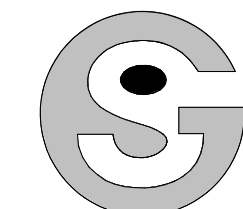
DRAWN BY:  
 CHECKED BY:  
 ISSUE DATE:  
 12/07/2021

REVISIONS:

|  |  |  |
|--|--|--|
|  |  |  |
|  |  |  |
|  |  |  |
|  |  |  |
|  |  |  |

SITE AERIAL

A0.3



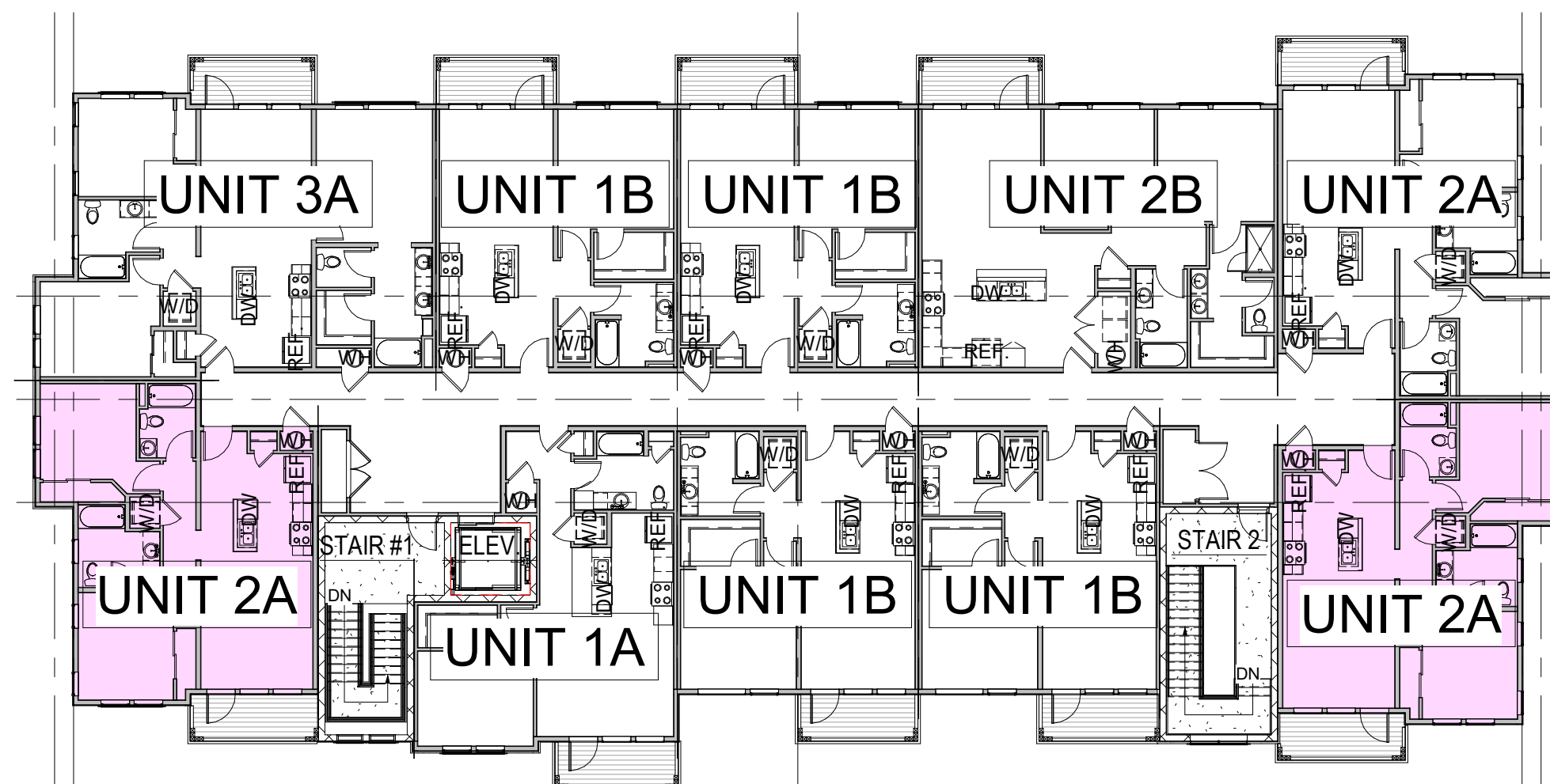
NOT FOR  
CONSTRUCTION

COPPER RIDGE VILLAGE

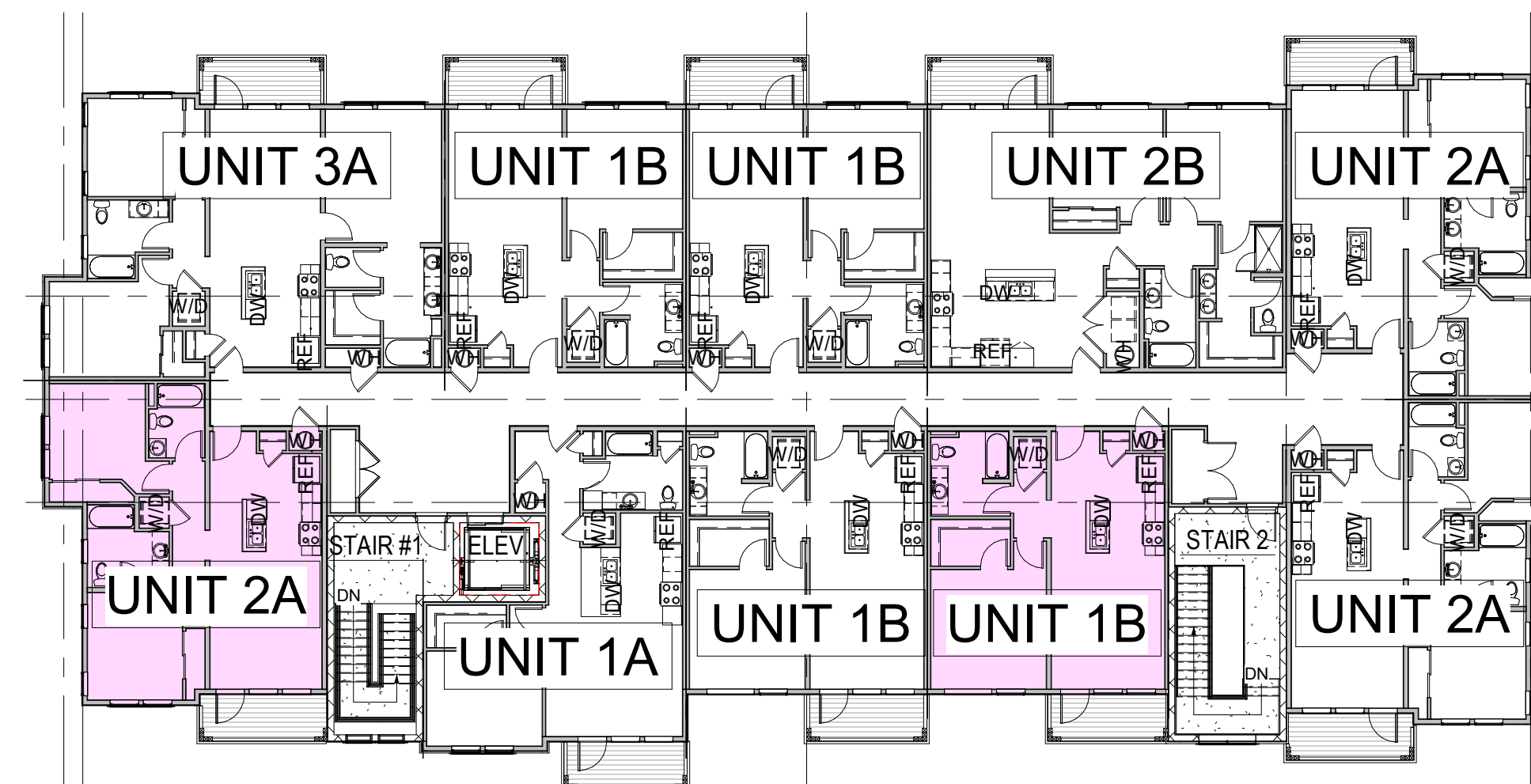
STEAMBOAT SPRINGS, CO

LEGEND

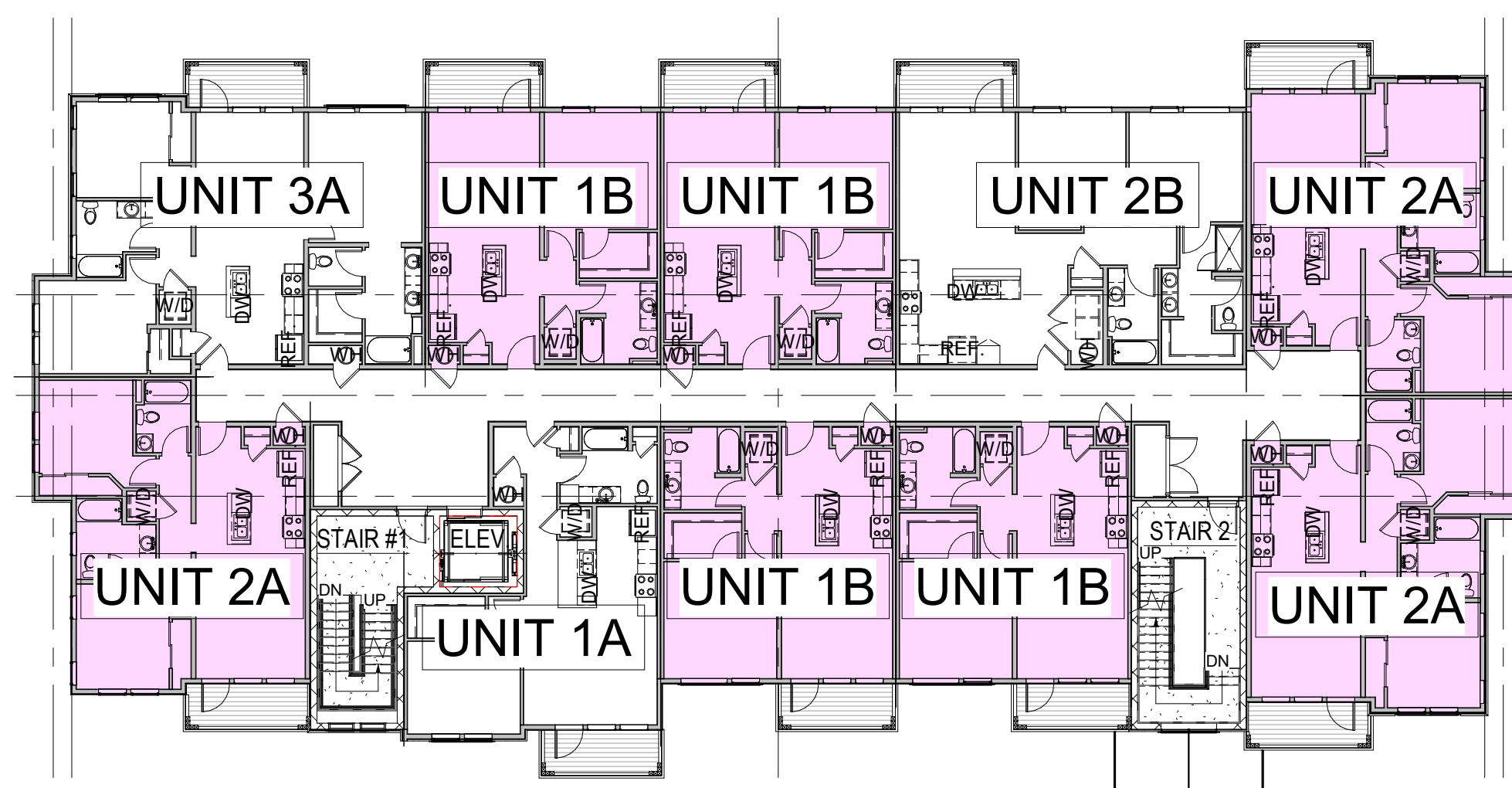
 DENOTES WORKFORCE UNIT LOCATION



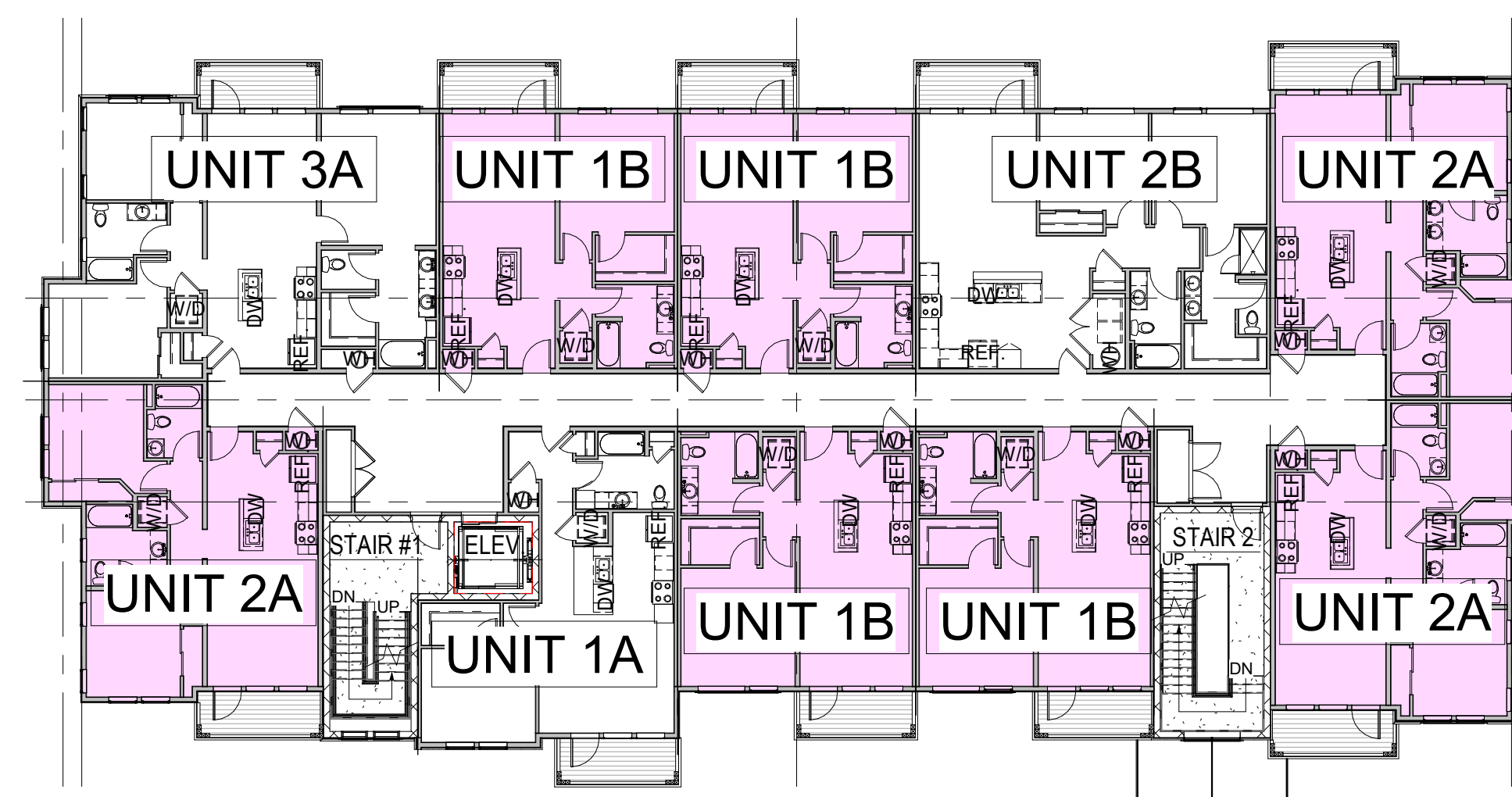
6 BLDG 2B - 4TH LEVEL WORKFORCE PLAN  
1/16" = 1'-0"



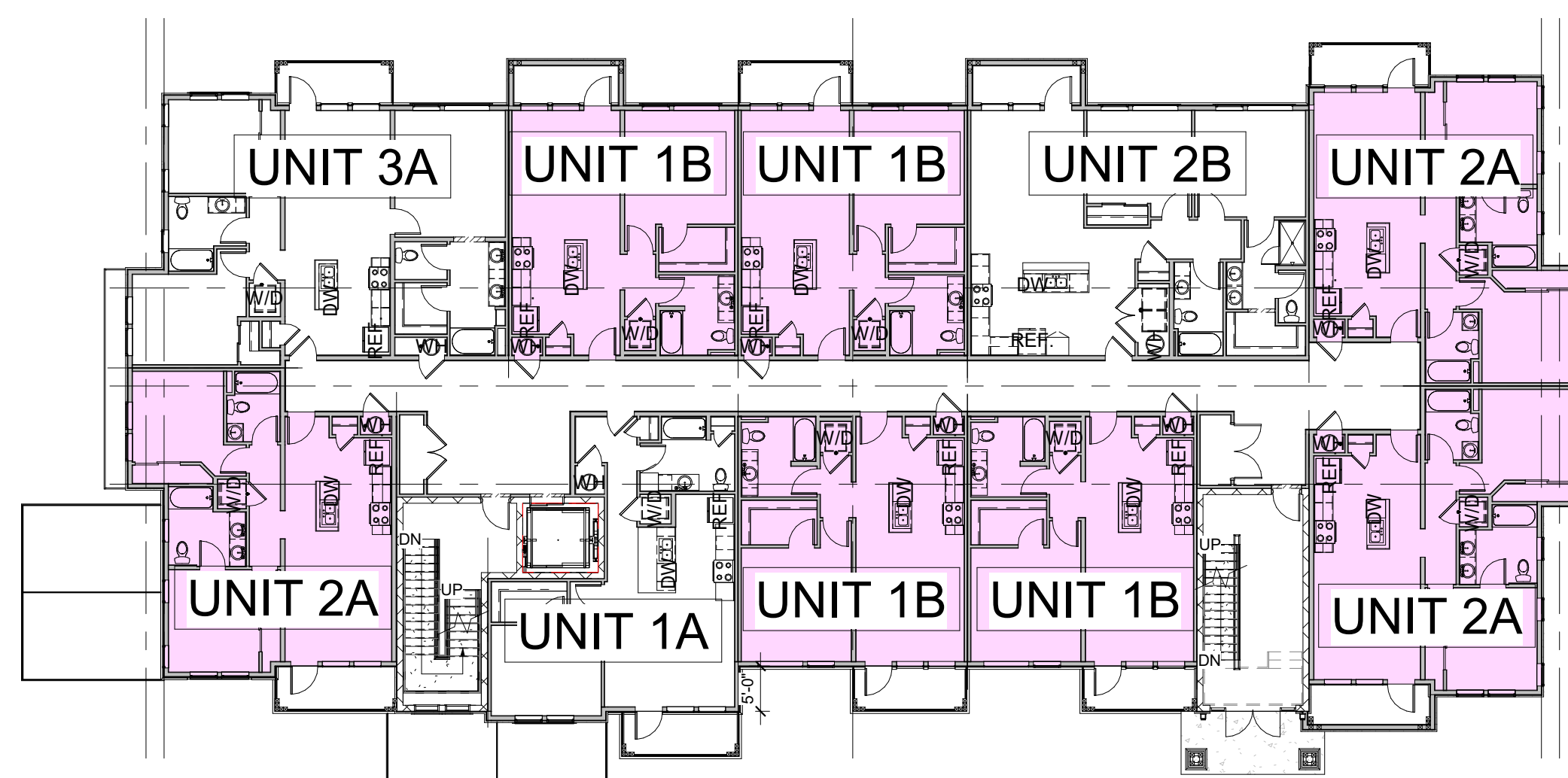
3 BLDG 1A & 3A - 4TH LEVEL WORKFORCE PLAN  
1/16" = 1'-0"



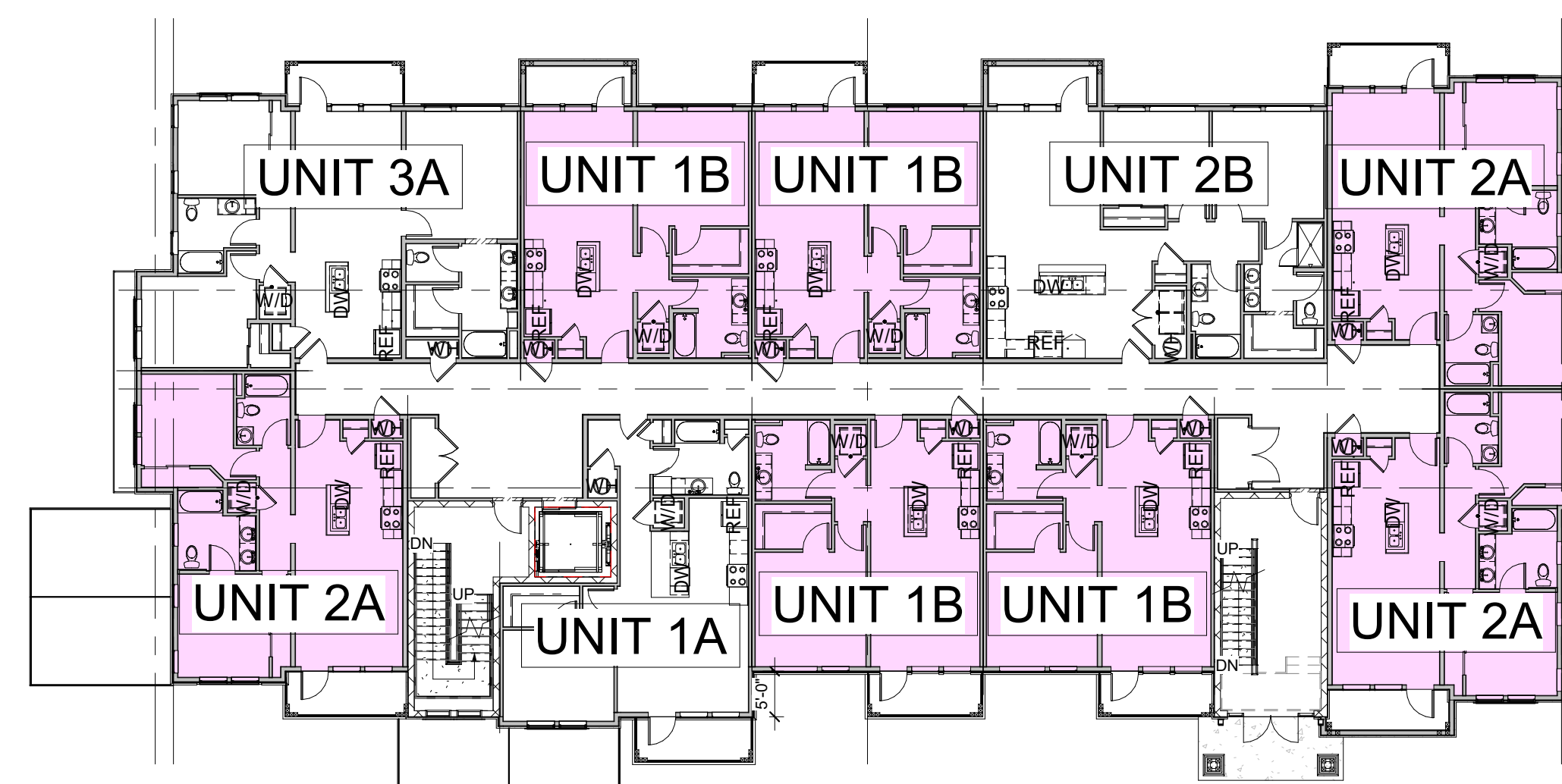
5 BLDG 2B - 3RD LEVEL WORKFORCE PLAN  
1/16" = 1'-0"



2 BLDG 1A & 3A - 3RD LEVEL WORKFORCE PLAN  
1/16" = 1'-0"



4 BLDG 2B - 2ND LEVEL WORKFORCE PLAN  
1/16" = 1'-0"



1 BLDG 1A & 3A - 2ND LEVEL WORKFORCE PLAN  
1/16" = 1'-0"

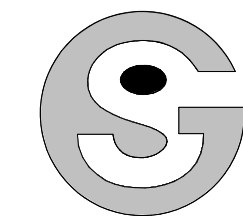
DRAWN BY:  
CHECKED BY:  
ISSUE DATE:  
12/07/2021

REVISIONS:

|  |  |  |
|--|--|--|
|  |  |  |
|  |  |  |
|  |  |  |
|  |  |  |
|  |  |  |
|  |  |  |

WORKFORCE  
UNITS KEY PLAN

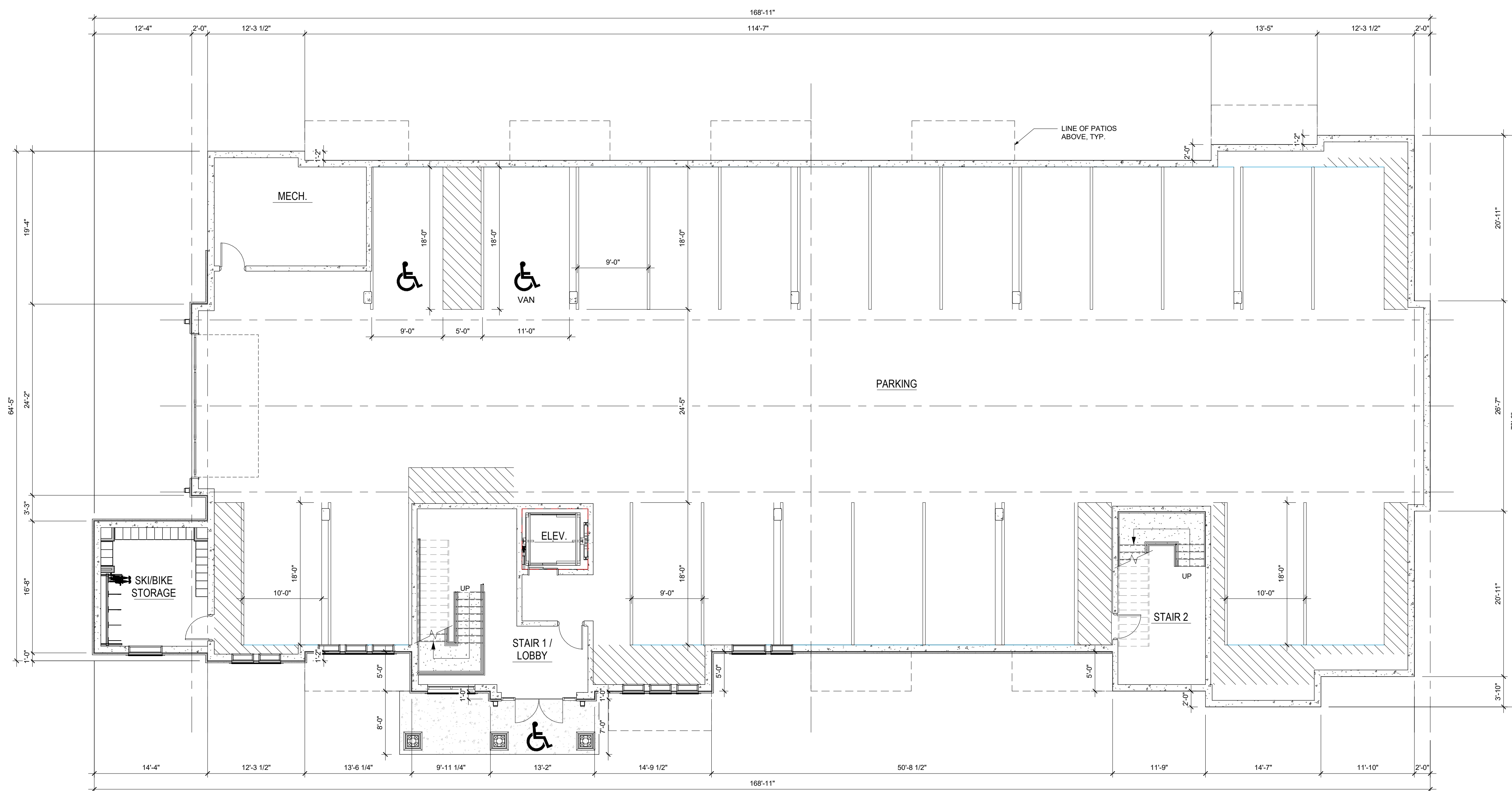
A0.4



Godden|Sudik  
ARCHITECTS  
SEE WHAT COULD BE  
303.455.4437  
www.goddensudik.com

5975 S. Quebec Street  
Suite 250  
Centennial, CO 80111

NOT FOR  
CONSTRUCTION



**1** BUILDING TYPE 1 - LEVEL 1  
1/8" = 1'-0"

COPPER RIDGE VILLAGE  
STEAMBOAT SPRINGS, CO

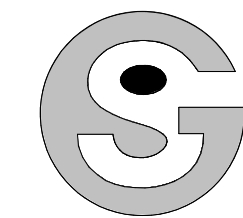
DRAWN BY:  
CHECKED BY:  
ISSUE DATE:  
12/07/2021

REVISIONS:

|  |  |  |
|--|--|--|
|  |  |  |
|  |  |  |
|  |  |  |
|  |  |  |
|  |  |  |
|  |  |  |

BUILDING TYPE 1  
FLOOR PLAN

A1.0



Godden|Sudik  
ARCHITECTS  
SEE WHAT COULD BE  
303.455.4437  
www.goddensudik.com

5975 S. Quebec Street  
Suite 250  
Centennial, CO 80111

NOT FOR  
CONSTRUCTION



**1** BUILDING TYPE 1 - LEVELS 2-4  
1/8" = 1'-0"

COPPER RIDGE VILLAGE

STEAMBOAT SPRINGS, CO

NOT FOR  
CONSTRUCTION

DRAWN BY:

CHECKED BY:

ISSUE DATE:  
12/07/2021

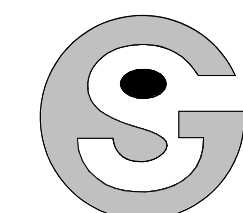
REVISIONS:

|  |  |
|--|--|
|  |  |
|  |  |
|  |  |
|  |  |
|  |  |
|  |  |
|  |  |
|  |  |
|  |  |
|  |  |

BUILDING TYPE 1  
FLOOR PLAN

A1.1

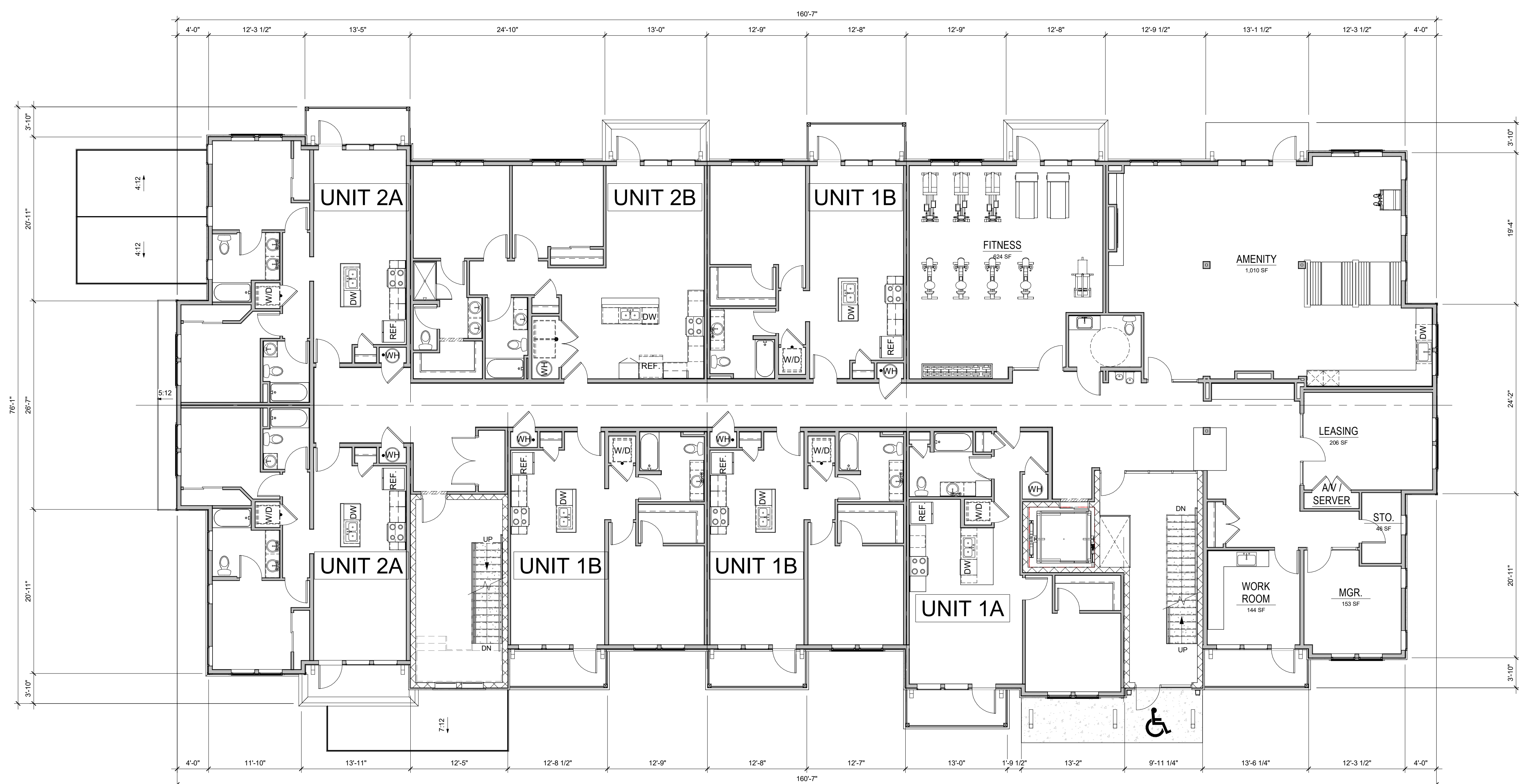
© Copyright 2021  
Godden | Sudik Architects & Planners, Inc.



**Godden|Sudik**  
ARCHITECTS  
SEE WHAT COULD BE  
303.455.4437  
www.goddensudik.com

5975 S. Quebec Street  
Suite 250  
Centennial, CO 80111

NOT FOR  
CONSTRUCTION



**1 BUILDING 4B - 2ND LEVEL**  
1/8" = 1'-0"

**COPPER RIDGE VILLAGE**

STEAMBOAT SPRINGS, CO

NOT FOR  
CONSTRUCTION

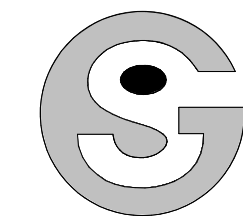
DRAWN BY:  
CHECKED BY:  
ISSUE DATE:  
12/07/2021

REVISIONS:

|  |  |  |
|--|--|--|
|  |  |  |
|  |  |  |
|  |  |  |
|  |  |  |
|  |  |  |
|  |  |  |
|  |  |  |
|  |  |  |

BUILDING 4 (TYPE 1B) FLOOR PLAN

**A1.2**



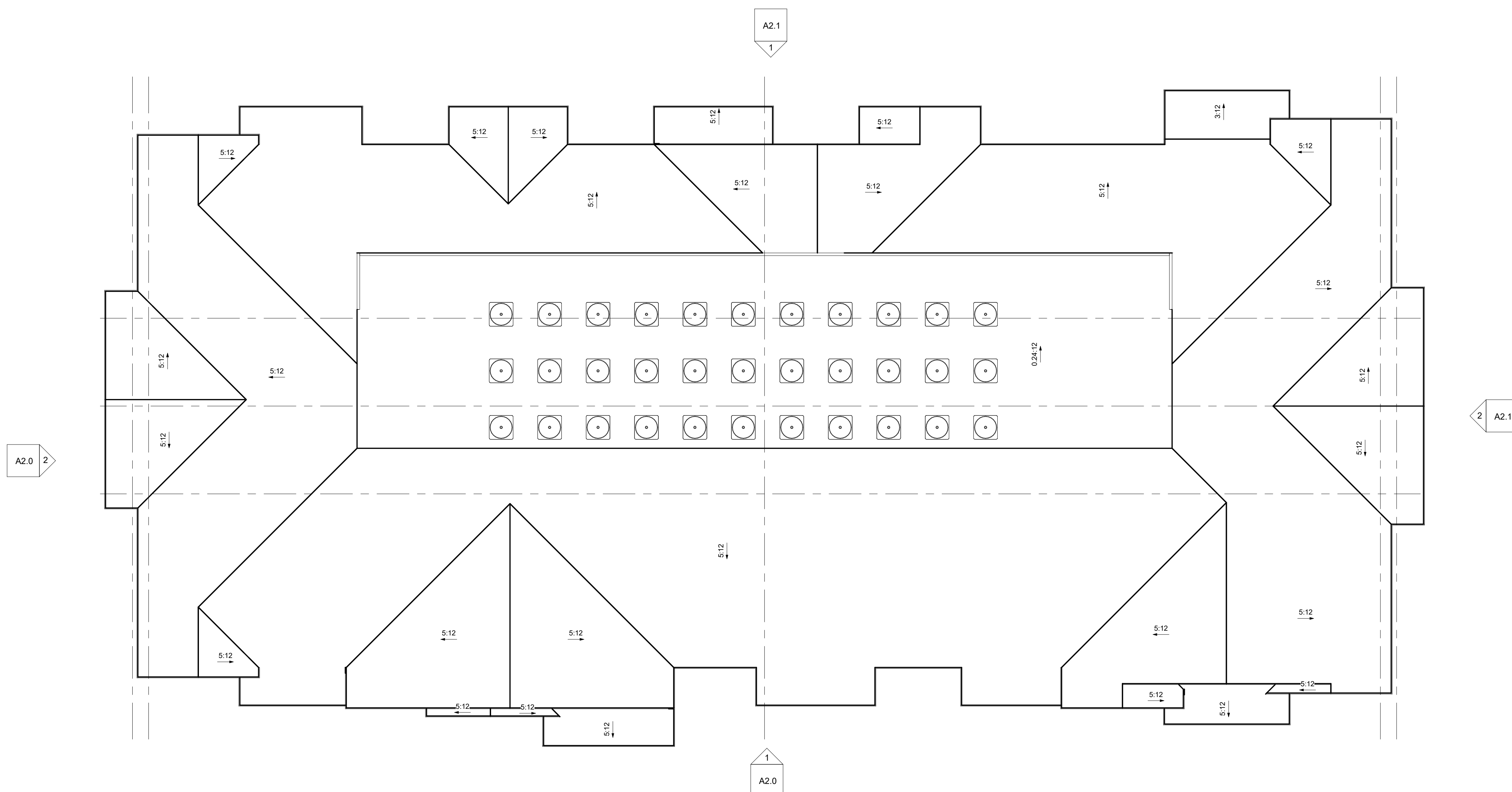
**Godden|Sudik**  
 ARCHITECTS  
 SEE WHAT COULD BE  
 303.455.4437  
 www.goddensudik.com

5975 S. Quebec Street  
 Suite 250  
 Centennial, CO 80111

NOT FOR  
 CONSTRUCTION

# COPPER RIDGE VILLAGE

STEAMBOAT SPRINGS, CO



**1 BUILDING 1A-ROOF PLAN**  
 1/8" = 1'-0"

DRAWN BY:

CHECKED BY:

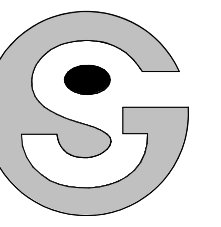
ISSUE DATE:  
 12/07/2021

REVISIONS:

|  |  |  |
|--|--|--|
|  |  |  |
|  |  |  |
|  |  |  |
|  |  |  |
|  |  |  |
|  |  |  |
|  |  |  |
|  |  |  |

BUILDING TYPE 1A  
 ROOF PLAN

**A1.3**



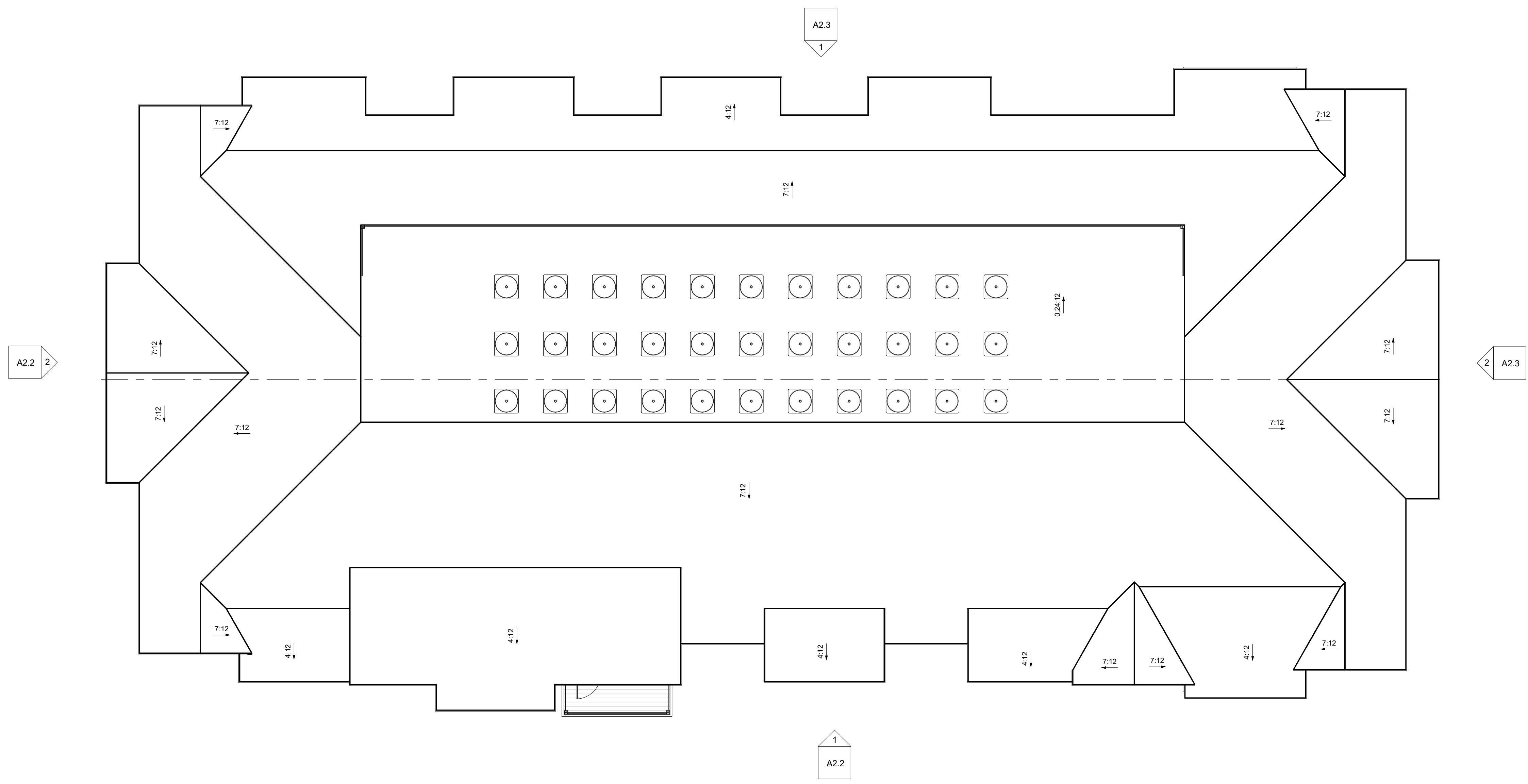
**Godden|Sudik**  
 ARCHITECTS  
 SEE WHAT COULD BE  
 303.455.4437  
 www.goddensudik.com

5975 S. Quebec Street  
 Suite 250  
 Centennial, CO 80111

NOT FOR  
 CONSTRUCTION

**COPPER RIDGE VILLAGE**

STEAMBOAT SPRINGS, CO



**1 BUILDING 1B-ROOF PLAN**  
 1/8" = 1'-0"

NOT FOR  
 CONSTRUCTION

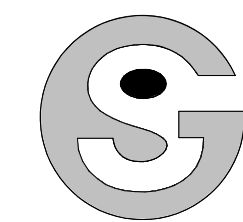
DRAWN BY:  
 CHECKED BY:  
 ISSUE DATE:  
 12/07/2021

REVISIONS:

|  |  |  |
|--|--|--|
|  |  |  |
|  |  |  |
|  |  |  |
|  |  |  |
|  |  |  |
|  |  |  |
|  |  |  |
|  |  |  |
|  |  |  |
|  |  |  |

BUILDING TYPE 1B  
 ROOF PLAN

**A1.4**



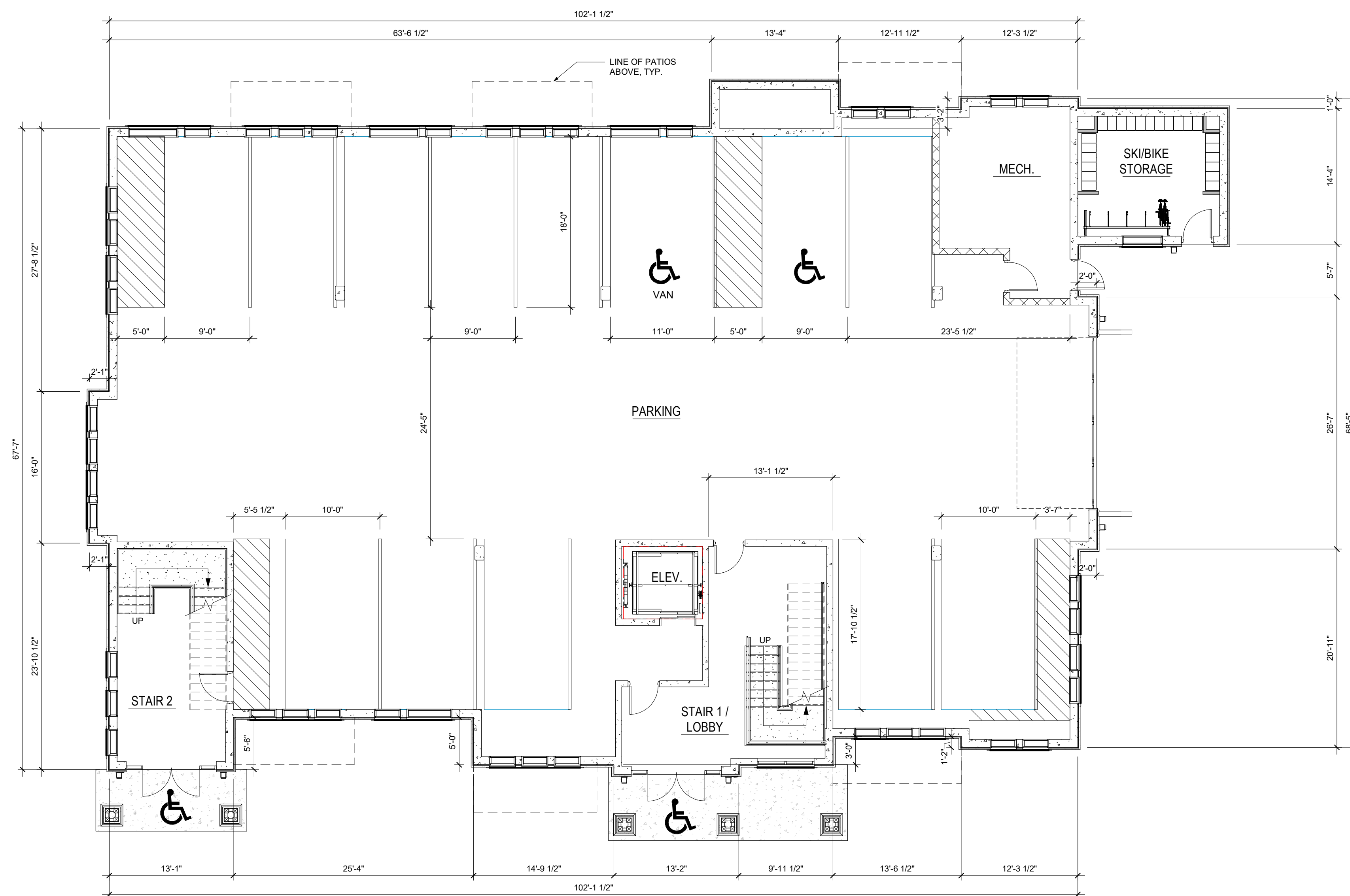
Godden|Sudik  
ARCHITECTS  
SEE WHAT COULD BE  
303.455.4437  
www.goddensudik.com

5975 S. Quebec Street  
Suite 250  
Centennial, CO 80111

NOT FOR  
CONSTRUCTION

# COPPER RIDGE VILLAGE

STEAMBOAT SPRINGS, CO



**1** BUILDING 2 - LEVEL 1  
1/8" = 1'-0"

DRAWN BY:

CHECKED BY:

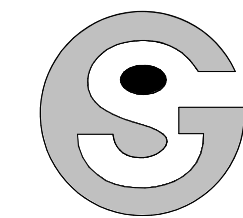
ISSUE DATE:  
12/07/2021

REVISIONS:

|  |  |  |
|--|--|--|
|  |  |  |
|  |  |  |
|  |  |  |
|  |  |  |
|  |  |  |
|  |  |  |
|  |  |  |
|  |  |  |

BUILDING TYPE 2  
FLOOR PLAN

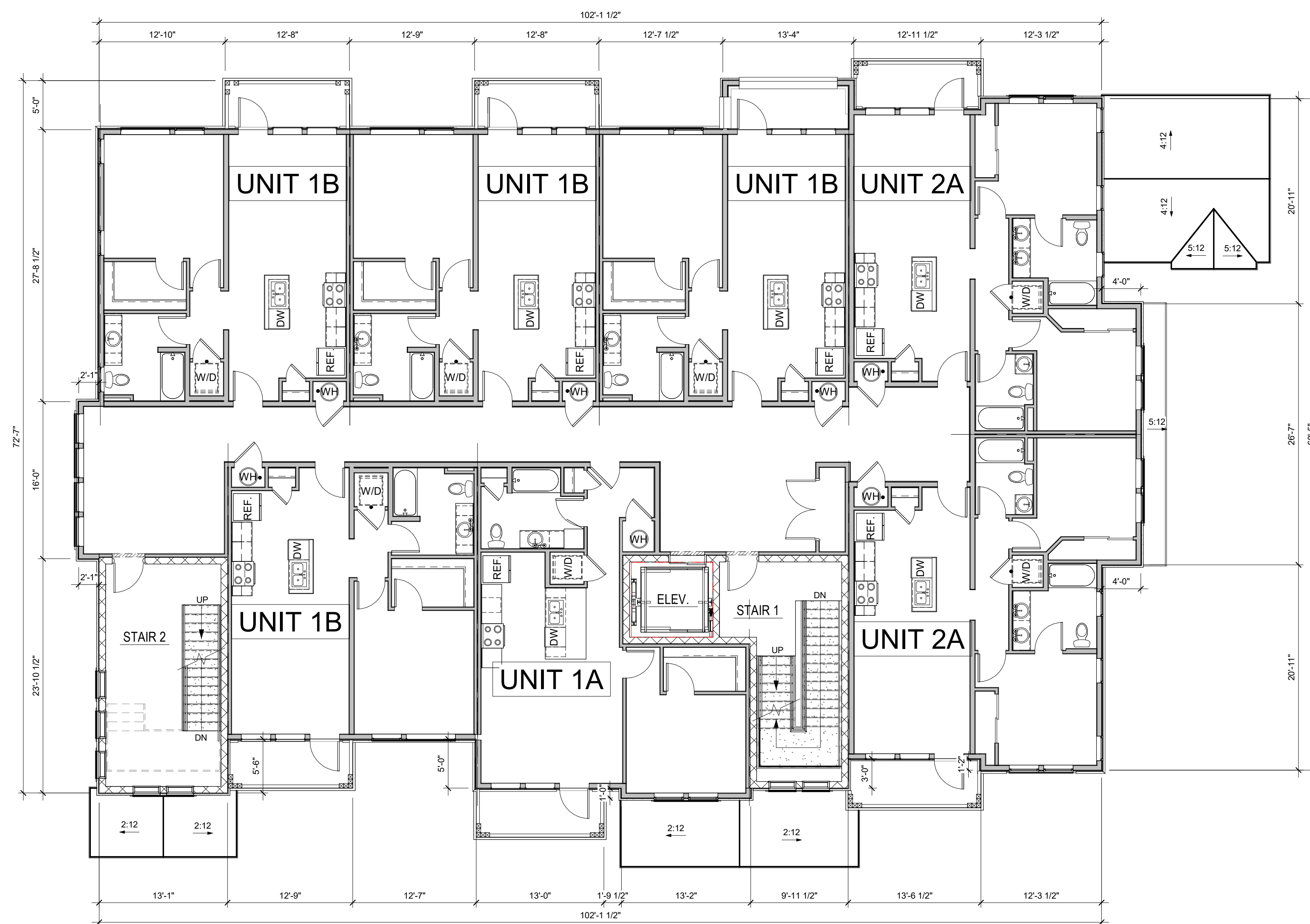
## A1.5



**Godden|Sudik**  
ARCHITECTS  
SEE WHAT COULD BE  
303.455.4437  
www.goddensudik.com

5975 S. Quebec Street  
Suite 250  
Centennial, CO 80111

NOT FOR  
CONSTRUCTION



**1** BUILDING 2 - LEVEL 2-4  
1/8" = 1'-0"

COPPER RIDGE VILLAGE

STEAMBOAT SPRINGS, CO

NOT FOR  
CONSTRUCTION

DRAWN BY:

CHECKED BY:

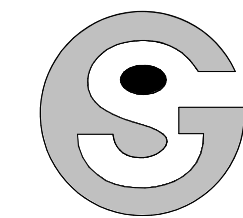
ISSUE DATE:  
12/07/2021

REVISIONS:

|  |  |  |
|--|--|--|
|  |  |  |
|  |  |  |
|  |  |  |
|  |  |  |
|  |  |  |
|  |  |  |
|  |  |  |
|  |  |  |

BUILDING TYPE 2  
FLOOR PLAN

**A1.6**



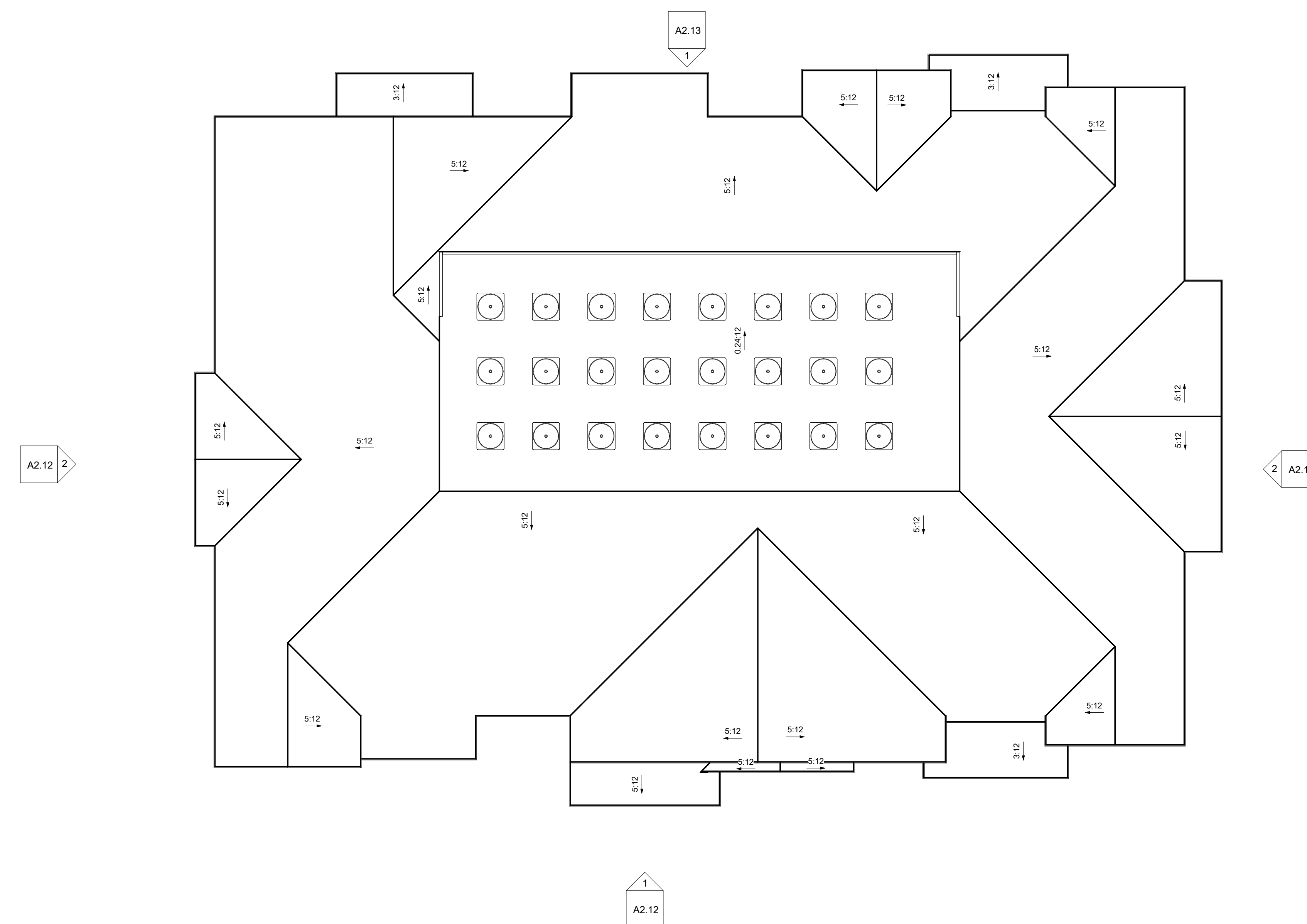
**Godden|Sudik**  
 ARCHITECTS  
 SEE WHAT COULD BE  
 303.455.4437  
 www.goddensudik.com

5975 S. Quebec Street  
 Suite 250  
 Centennial, CO 80111

NOT FOR  
 CONSTRUCTION

# COPPER RIDGE VILLAGE

STEAMBOAT SPRINGS, CO



**1** BUILDING 2 - ROOF PLAN  
 1/8" = 1'-0"

NOT FOR CONSTRUCTION

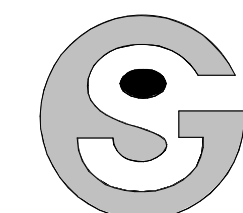
DRAWN BY:  
 CHECKED BY:  
 ISSUE DATE:  
 12/07/2021

REVISIONS:

|  |  |  |
|--|--|--|
|  |  |  |
|  |  |  |
|  |  |  |
|  |  |  |
|  |  |  |
|  |  |  |
|  |  |  |
|  |  |  |

BUILDING TYPE 2  
 ROOF PLAN

**A1.7**



Godden|Sudik  
ARCHITECTS  
SEE WHAT COULD BE  
303.455.4437  
www.goddensudik.com

5975 S. Quebec Street  
Suite 250  
Centennial, CO 80111

NOT FOR  
CONSTRUCTION

COPPER RIDGE VILLAGE  
STEAMBOAT SPRINGS, CO



TRANSPARENCY CALCS:  
FLOOR AREA: 1499 SF  
REQUIRED: 375 SF  
PROVIDED: 519 SF  
PERCENTAGE: 34%

TRANSPARENCY CALCS:  
FLOOR AREA: 1499 SF  
REQUIRED: 375 SF  
PROVIDED: 550 SF  
PERCENTAGE: 37%

TRANSPARENCY CALCS:  
FLOOR AREA: 1499 SF  
REQUIRED: 375 SF  
PROVIDED: 550 SF  
PERCENTAGE: 37%

TRANSPARENCY CALCS:  
FLOOR AREA: 1030 SF  
REQUIRED: 258 SF  
PROVIDED: 328 SF  
PERCENTAGE: 32%

| BUILDING 1A - BUILDING HEIGHTS - FRONT ELEVATION |            |            |            |
|--|------------|------------|------------|
|  | BLDG 1     | BLDG 3     | BLDG 5     |
| OVERALL BLDG HGT.                                | 53'-7 3/4" | 51'-3"     | 77'-1"     |
| GREATEST PLATE HGT.                              | 41'-0"     | 38'-7"     | 64'-5"     |
| LOWEST PLATE HGT.                                | 36'-1"     | 34'-10"    | 34'-4 1/2" |
| AVERAGE PLATE HGT.                               | 38'-6 1/2" | 36'-8 1/2" | 49'-4 3/4" |

1 BUILDING 1 (TYPE 1A) - FRONT ELEVATION  
1/8" = 1'-0"

| BUILDING 1A - BUILDING HEIGHTS - LEFT ELEVATION |             |             |            |
|---|-------------|-------------|------------|
|   | BLDG 1      | BLDG 3      | BLDG 5     |
| OVERALL BLDG HGT.                               | 49'-1"      | 57'-6 1/2"  | 77'-1 1/2" |
| GREATEST PLATE HGT.                             | 36'-5"      | 44'-11"     | 64'-6"     |
| LOWEST PLATE HGT.                               | 23'-5 1/2"  | 37'-0"      | 49'-0 1/2" |
| AVERAGE PLATE HGT.                              | 29'-11 1/4" | 40'-11 1/2" | 59'-9 1/4" |



TRANSPARENCY CALCS:  
FLOOR AREA: 627 SF  
REQUIRED: 157 SF  
PROVIDED: 160 SF  
PERCENTAGE: 25.5%

TRANSPARENCY CALCS:  
FLOOR AREA: 627 SF  
REQUIRED: 157 SF  
PROVIDED: 160 SF  
PERCENTAGE: 25.5%

TRANSPARENCY CALCS:  
FLOOR AREA: 627 SF  
REQUIRED: 157 SF  
PROVIDED: 160 SF  
PERCENTAGE: 25.5%

TRANSPARENCY CALCS:  
FLOOR AREA: 421 SF  
REQUIRED: 106 SF  
PROVIDED: 61 SF  
PERCENTAGE: 15%

| COLOR LEGEND SCHEME A* |  |
|------------------------|--|
| <b>A</b>               | <b>BODY COLOR 1:</b><br>MANUF: SHERWIN WILLIAMS, OR SIM.<br>COLOR: VIRTUAL TAUPE SW 7039 |
| <b>B</b>               | <b>BODY COLOR 2:</b><br>MANUF: SHERWIN WILLIAMS, OR SIM.<br>COLOR: URBANE BRONZE SW 7048 |
| <b>C</b>               | <b>STONE:</b><br>MANUF: CORONADO, OR SIM.<br>COLOR: IDAHO DRYSTACK - ANTIQUE BUFF        |
| <b>D</b>               | <b>TRIM:</b><br>MANUF: SHERWIN WILLIAMS, OR SIM.<br>COLOR: IRON GATE SW 2926             |
| <b>E</b>               | <b>ROOF:</b><br>MANUF: CERTAINTED, OR SIM.<br>COLOR: LANDMARK - HEATHER BLEND            |

\*ALL COLOR INFORMATION IS APPROXIMATE. MANUFACTURER AND FINAL TINT SUBJECT TO CHANGE

2 BUILDING 1 (TYPE 1A) - LEFT ELEVATION  
1/8" = 1'-0"

DRAWN BY:

CHECKED BY:

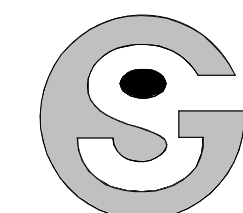
ISSUE DATE:  
12/07/2021

REVISIONS:

| NO. | DESCRIPTION | DATE |
|-----|-------------|------|
|     |             |      |
|     |             |      |
|     |             |      |
|     |             |      |

BLDG 1 (TYPE 1A) -  
ELEVATIONS

A2.0



Godden|Sudik  
ARCHITECTS  
SEE WHAT COULD BE  
303.455.4437  
www.goddensudik.com

5975 S. Quebec Street  
Suite 250  
Centennial, CO 80111

NOT FOR  
CONSTRUCTION

COPPER RIDGE VILLAGE

STEAMBOAT SPRINGS, CO



TRANSPARENCY CALCS:  
FLOOR AREA: 1392 SF  
REQUIRED: 348 SF  
PROVIDED: 536 SF  
PERCENTAGE: 38%

TRANSPARENCY CALCS:  
FLOOR AREA: 1392 SF  
REQUIRED: 348 SF  
PROVIDED: 536 SF  
PERCENTAGE: 38%

TRANSPARENCY CALCS:  
FLOOR AREA: 1392 SF  
REQUIRED: 348 SF  
PROVIDED: 536 SF  
PERCENTAGE: 38%

1 BUILDING 1 (TYPE 1A) - REAR ELEVATION  
1/8" = 1'-0"

| BUILDING 1A - BUILDING HEIGHTS - REAR ELEVATION |             |             |             |
|---|-------------|-------------|-------------|
|   | BLDG 1      | BLDG 3      | BLDG 5      |
| OVERALL BLDG HGT.                               | 41'-4"      | 58'-8 1/2"  | 60'-6 1/2"  |
| GREATEST PLATE HGT.                             | 28'-8 1/2"  | 46'-1"      | 47'-10 1/2" |
| LOWEST PLATE HGT.                               | 23'-3"      | 41'-8 1/2"  | 25'-8 1/2"  |
| AVERAGE PLATE HGT.                              | 25'-11 3/4" | 43'-10 3/4" | 39'-11 3/4" |

| BUILDING 1A - BUILDING HEIGHTS - RIGHT ELEVATION |        |             |            |
|--|--------|-------------|------------|
|  | BLDG 1 | BLDG 3      | BLDG 5     |
| OVERALL BLDG HGT.                                | 51'-5" | 57'-6"      | 47'-0 1/2" |
| GREATEST PLATE HGT.                              | 38'-9" | 44'-10 1/2" | 34'-5"     |
| LOWEST PLATE HGT.                                | 27'-7" | 38'-7"      | 25'-8"     |
| AVERAGE PLATE HGT.                               | 33'-2" | 41'-8 3/4"  | 30'-0 1/2" |

COLOR LEGEND SCHEME A\*

- BODY COLOR 1:**  
MANUF: SHERWIN WILLIAMS, OR SIM.  
COLOR: VIRTUAL TAUPE SW 7039
- BODY COLOR 2:**  
MANUF: SHERWIN WILLIAMS, OR SIM.  
COLOR: URBANE BRONZE SW 7048
- STONE:**  
MANUF: CORONADO, OR SIM.  
COLOR: IDAHO DRYSTACK - ANTIQUE BUFF
- TRIM:**  
MANUF: SHERWIN WILLIAMS, OR SIM.  
COLOR: IRON GATE SW 2926
- ROOF:**  
MANUF: CERTAINTEED, OR SIM.  
COLOR: LANDMARK - HEATHER BLEND

\*ALL COLOR INFORMATION IS APPROXIMATE. MANUFACTURER AND FINAL TINT SUBJECT TO CHANGE



TRANSPARENCY CALCS:  
FLOOR AREA: 590 SF  
REQUIRED: 148 SF  
PROVIDED: 160 SF  
PERCENTAGE: 27%

TRANSPARENCY CALCS:  
FLOOR AREA: 590 SF  
REQUIRED: 148 SF  
PROVIDED: 160 SF  
PERCENTAGE: 27%

TRANSPARENCY CALCS:  
FLOOR AREA: 590 SF  
REQUIRED: 148 SF  
PROVIDED: 160 SF  
PERCENTAGE: 27%

2 BUILDING 1 (TYPE 1A) - RIGHT ELEVATION  
1/8" = 1'-0"

DRAWN BY:

CHECKED BY:

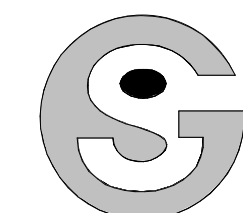
ISSUE DATE:  
12/07/2021

REVISIONS:

| NO. | DESCRIPTION |
|-----|-------------|
|     |             |
|     |             |
|     |             |
|     |             |
|     |             |
|     |             |
|     |             |
|     |             |
|     |             |
|     |             |

BLDG 1 (TYPE 1A) -  
ELEVATIONS

A2.1



NOT FOR  
CONSTRUCTION

COPPER RIDGE VILLAGE  
STEAMBOAT SPRINGS, CO



**TRANSPARENCY CALCS:**  
FLOOR AREA: 1499 SF  
REQUIRED: 375 SF  
PROVIDED: 464 SF  
PERCENTAGE: 31%

**TRANSPARENCY CALCS:**  
FLOOR AREA: 1499 SF  
REQUIRED: 375 SF  
PROVIDED: 464 SF  
PERCENTAGE: 31%

**TRANSPARENCY CALCS:**  
FLOOR AREA: 1499 SF  
REQUIRED: 375 SF  
PROVIDED: 627 SF  
PERCENTAGE: 42%

| BUILDING 1B - BUILDING HEIGHTS - FRONT ELEVATION |            |            |            |
|--|------------|------------|------------|
|  | BLDG 2     | BLDG 4     | BLDG 6     |
| OVERALL BLDG HGT.                                | 65'-4"     | 47'-8 1/2" | 46'-5 1/2" |
| GREATEST PLATE HGT.                              | 49'-2 1/2" | 31'-7"     | 30'-4"     |
| LOWEST PLATE HGT.                                | 36'-11"    | 19'-3"     | 26'-8"     |
| AVERAGE PLATE HGT.                               | 43'-0 3/4" | 25'-5"     | 28'-6"     |

1 BUILDING 2 (TYPE 1B) - FRONT ELEVATION  
1/8" = 1'-0"

| BUILDING 1B - BUILDING HEIGHTS - LEFT ELEVATION |             |             |             |
|---|-------------|-------------|-------------|
|   | BLDG 2      | BLDG 4      | BLDG 6      |
| OVERALL BLDG HGT.                               | 63'-10 1/2" | 47'-10 1/2" | 43'-0"      |
| GREATEST PLATE HGT.                             | 47'-9"      | 31'-9"      | 26'-10 1/2" |
| LOWEST PLATE HGT.                               | 3'-2"       | 9'-11 1/2"  | 24'-3"      |
| AVERAGE PLATE HGT.                              | 41'-11 1/2" | 20'-10 1/4" | 25'-6 3/4"  |

| COLOR LEGEND SCHEME B* |   |
|------------------------|---|
| <b>F</b>               | <b>BODY COLOR 1:</b><br>MANUF: SHERWIN WILLIAMS, OR SIM.<br>COLOR: WARM PEWTER SW 9572  |
| <b>G</b>               | <b>BODY COLOR 2:</b><br>MANUF: SHERWIN WILLIAMS, OR SIM.<br>COLOR: PEWTER GREEN SW 6208 |
| <b>H</b>               | <b>STONE:</b><br>MANUF: CORONADO, OR SIM.<br>COLOR: EASTERN MTN. LEDGE - HURON          |
| <b>I</b>               | <b>TRIM:</b><br>MANUF: SHERWIN WILLIAMS, OR SIM.<br>COLOR: CAVIAR SW 6990               |
| <b>J</b>               | <b>ROOF:</b><br>MANUF: CERTAINTEED, OR SIM.<br>COLOR: LANDMARK - PEWTERWOOD             |

\*ALL COLOR INFORMATION IS APPROXIMATE. MANUFACTURER AND FINAL TINT SUBJECT TO CHANGE



**TRANSPARENCY CALCS:**  
FLOOR AREA: 590 SF  
REQUIRED: 148 SF  
PROVIDED: 160 SF  
PERCENTAGE: 27%

**TRANSPARENCY CALCS:**  
FLOOR AREA: 590 SF  
REQUIRED: 148 SF  
PROVIDED: 160 SF  
PERCENTAGE: 27%

**TRANSPARENCY CALCS:**  
FLOOR AREA: 590 SF  
REQUIRED: 148 SF  
PROVIDED: 160 SF  
PERCENTAGE: 27%

**TRANSPARENCY CALCS:**  
FLOOR AREA: 420 SF  
REQUIRED: 105 SF  
PROVIDED: 61 SF  
PERCENTAGE: 15%

2 BUILDING 2 (TYPE 1B) - LEFT ELEVATION  
1/8" = 1'-0"

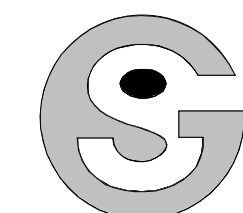
DRAWN BY:  
CHECKED BY:  
ISSUE DATE:  
12/07/2021

REVISIONS:

| NO. | DESCRIPTION |
|-----|-------------|
|     |             |
|     |             |
|     |             |
|     |             |
|     |             |
|     |             |
|     |             |
|     |             |
|     |             |
|     |             |

BLDG 2 (TYPE 1B) - ELEVATIONS

A2.2



NOT FOR  
CONSTRUCTION

COPPER RIDGE VILLAGE  
STEAMBOAT SPRINGS, CO



TRANSPARENCY CALCS:  
FLOOR AREA: 1304 SF  
REQUIRED: 326 SF  
PROVIDED: 479 SF  
PERCENTAGE: 37%

TRANSPARENCY CALCS:  
FLOOR AREA: 1304 SF  
REQUIRED: 326 SF  
PROVIDED: 479 SF  
PERCENTAGE: 37%

TRANSPARENCY CALCS:  
FLOOR AREA: 1304 SF  
REQUIRED: 326 SF  
PROVIDED: 479 SF  
PERCENTAGE: 37%

1 BUILDING 2 (TYPE 1B) - REAR ELEVATION  
1/8" = 1'-0"

| BUILDING 1B - BUILDING HEIGHTS - REAR ELEVATION |            |            |             |
|---|------------|------------|-------------|
|   | BLDG 2     | BLDG 4     | BLDG 6      |
| OVERALL BLDG HGT.                               | 53'-4 1/2" | 31'-0 1/2" | 45'-9 1/2"  |
| GREATEST PLATE HGT.                             | 37'-3"     | 14'-1 1/4" | 29'-8"      |
| LOWEST PLATE HGT.                               | 33'-6"     | 9'-3 1/2"  | 24'-3"      |
| AVERAGE PLATE HGT.                              | 35'-4 1/2" | 12'-1 1/4" | 26'-11 1/2" |

| BUILDING 1B - BUILDING HEIGHTS - RIGHT ELEVATION |             |             |             |
|--|-------------|-------------|-------------|
|  | BLDG 2      | BLDG 4      | BLDG 6      |
| OVERALL BLDG HGT.                                | 53'-11"     | 35'-2"      | 44'-0 1/2"  |
| GREATEST PLATE HGT.                              | 37'-9 1/2"  | 19'-0 1/2"  | 18'-9 1/2"  |
| LOWEST PLATE HGT.                                | 36'-5"      | 14'-11"     | 15'-2"      |
| AVERAGE PLATE HGT.                               | 37'-11 1/4" | 16'-11 3/4" | 16'-11 3/4" |

COLOR LEGEND SCHEME B\*

- BODY COLOR 1:**  
MANUF: SHERWIN WILLIAMS, OR SIM.  
COLOR: WARM PEWTER SW 9572
- BODY COLOR 2:**  
MANUF: SHERWIN WILLIAMS, OR SIM.  
COLOR: PEWTER GREEN SW 6208
- STONE:**  
MANUF: CORONADO, OR SIM.  
COLOR: EASTERN MTN. LEDGE - HURON
- TRIM:**  
MANUF: SHERWIN WILLIAMS, OR SIM.  
COLOR: CAVIAR SW 6990
- ROOF:**  
MANUF: CERTAINTED, OR SIM.  
COLOR: LANDMARK - PEWTERWOOD

\*ALL COLOR INFORMATION IS APPROXIMATE. MANUFACTURER AND FINAL TINT SUBJECT TO CHANGE

TRANSPARENCY CALCS:  
FLOOR AREA: 590 SF  
REQUIRED: 148 SF  
PROVIDED: 160 SF  
PERCENTAGE: 27%

TRANSPARENCY CALCS:  
FLOOR AREA: 590 SF  
REQUIRED: 148 SF  
PROVIDED: 160 SF  
PERCENTAGE: 27%

TRANSPARENCY CALCS:  
FLOOR AREA: 590 SF  
REQUIRED: 148 SF  
PROVIDED: 160 SF  
PERCENTAGE: 27%

TRANSPARENCY CALCS:  
FLOOR AREA: 309 SF  
REQUIRED: 78 SF  
PROVIDED: 58 SF  
PERCENTAGE: 19%

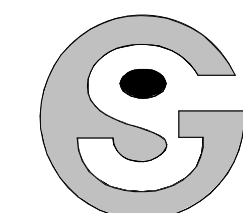


2 BUILDING 2 (TYPE 1B) - RIGHT ELEVATION  
1/8" = 1'-0"

DRAWN BY:  
CHECKED BY:  
ISSUE DATE:  
12/07/2021  
REVISIONS:

BLDG 2 (TYPE 1B) -  
ELEVATIONS

A2.3



NOT FOR  
CONSTRUCTION

COPPER RIDGE VILLAGE  
STEAMBOAT SPRINGS, CO



**TRANSPARENCY CALCS:**  
FLOOR AREA: 1499 SF  
REQUIRED: 375 SF  
PROVIDED: 519 SF  
PERCENTAGE: 34%

**TRANSPARENCY CALCS:**  
FLOOR AREA: 1499 SF  
REQUIRED: 375 SF  
PROVIDED: 550 SF  
PERCENTAGE: 37%

**TRANSPARENCY CALCS:**  
FLOOR AREA: 1499 SF  
REQUIRED: 375 SF  
PROVIDED: 550 SF  
PERCENTAGE: 37%

| BUILDING 1A - BUILDING HEIGHTS - FRONT ELEVATION |            |            |            |
|--|------------|------------|------------|
|  | BLDG 1     | BLDG 3     | BLDG 5     |
| OVERALL BLDG HGT.                                | 53'-7 3/4" | 51'-3"     | 77'-1"     |
| GREATEST PLATE HGT.                              | 41'-0"     | 38'-7"     | 64'-5"     |
| LOWEST PLATE HGT.                                | 36'-1"     | 34'-10"    | 34'-4 1/2" |
| AVERAGE PLATE HGT.                               | 38'-6 1/2" | 36'-8 1/2" | 49'-4 3/4" |

| BUILDING 1A - BUILDING HEIGHTS - LEFT ELEVATION |             |             |            |
|---|-------------|-------------|------------|
|   | BLDG 1      | BLDG 3      | BLDG 5     |
| OVERALL BLDG HGT.                               | 49'-1"      | 57'-6 1/2"  | 77'-1 1/2" |
| GREATEST PLATE HGT.                             | 36'-5"      | 44'-11"     | 64'-6"     |
| LOWEST PLATE HGT.                               | 23'-5 1/2"  | 37'-0"      | 49'-0 1/2" |
| AVERAGE PLATE HGT.                              | 29'-11 1/4" | 40'-11 1/2" | 59'-9 1/4" |

1 BUILDING 3 (TYPE 1A) - FRONT ELEVATION  
1/8" = 1'-0"



**TRANSPARENCY CALCS:**  
FLOOR AREA: 627 SF  
REQUIRED: 157 SF  
PROVIDED: 160 SF  
PERCENTAGE: 25.5%

**TRANSPARENCY CALCS:**  
FLOOR AREA: 627 SF  
REQUIRED: 157 SF  
PROVIDED: 160 SF  
PERCENTAGE: 25.5%

**TRANSPARENCY CALCS:**  
FLOOR AREA: 627 SF  
REQUIRED: 157 SF  
PROVIDED: 160 SF  
PERCENTAGE: 25.5%

**TRANSPARENCY CALCS:**  
FLOOR AREA: 421 SF  
REQUIRED: 106 SF  
PROVIDED: 61 SF  
PERCENTAGE: 15%

| COLOR LEGEND SCHEME A* |  |
|------------------------|--|
| <b>A</b>               | <b>BODY COLOR 1:</b><br>MANUF: SHERWIN WILLIAMS, OR SIM.<br>COLOR: VIRTUAL TAUPU SW 7039 |
| <b>B</b>               | <b>BODY COLOR 2:</b><br>MANUF: SHERWIN WILLIAMS, OR SIM.<br>COLOR: URBANE BRONZE SW 7048 |
| <b>C</b>               | <b>STONE:</b><br>MANUF: CORONADO, OR SIM.<br>COLOR: IDAHO DRYSTACK - ANTIQUE BUFF        |
| <b>D</b>               | <b>TRIM:</b><br>MANUF: SHERWIN WILLIAMS, OR SIM.<br>COLOR: IRON GATE SW 2926             |
| <b>E</b>               | <b>ROOF:</b><br>MANUF: CERTAINTEED, OR SIM.<br>COLOR: LANDMARK - HEATHER BLEND           |

\*ALL COLOR INFORMATION IS APPROXIMATE. MANUFACTURER AND FINAL TINT SUBJECT TO CHANGE

2 BUILDING 3 (TYPE 1A) - LEFT ELEVATION  
1/8" = 1'-0"

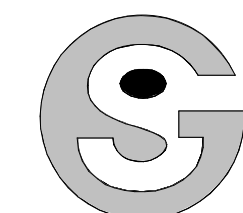
DRAWN BY:  
CHECKED BY:  
ISSUE DATE:  
12/07/2021

REVISIONS:

|  |  |
|--|--|
|  |  |
|  |  |
|  |  |
|  |  |
|  |  |
|  |  |
|  |  |
|  |  |
|  |  |
|  |  |

BLDG 3 (TYPE 1A) - ELEVATIONS

A2.4



NOT FOR  
CONSTRUCTION

COPPER RIDGE VILLAGE

STEAMBOAT SPRINGS, CO



TRANSPARENCY CALCS:  
FLOOR AREA: 1392 SF  
REQUIRED: 348 SF  
PROVIDED: 536 SF  
PERCENTAGE: 38%

TRANSPARENCY CALCS:  
FLOOR AREA: 1392 SF  
REQUIRED: 348 SF  
PROVIDED: 536 SF  
PERCENTAGE: 38%

TRANSPARENCY CALCS:  
FLOOR AREA: 1390 SF  
REQUIRED: 348 SF  
PROVIDED: 349 SF  
PERCENTAGE: 25%

TRANSPARENCY CALCS:  
FLOOR AREA: 1390 SF  
REQUIRED: 348 SF  
PROVIDED: 349 SF  
PERCENTAGE: 25%

| BUILDING 1A - BUILDING HEIGHTS - REAR ELEVATION |             |             |             |
|---|-------------|-------------|-------------|
|   | BLDG 1      | BLDG 3      | BLDG 5      |
| OVERALL BLDG HGT                                | 41'-4"      | 58'-8 1/2"  | 60'-6 1/2"  |
| GREATEST PLATE HGT.                             | 28'-8 1/2"  | 46'-1"      | 47'-10 1/2" |
| LOWEST PLATE HGT.                               | 23'-3"      | 41'-8 1/2"  | 25'-8 1/2"  |
| AVERAGE PLATE HGT.                              | 25'-11 3/4" | 43'-10 3/4" | 39'-11 3/4" |

| BUILDING 1A - BUILDING HEIGHTS - RIGHT ELEVATION |        |             |            |
|--|--------|-------------|------------|
|  | BLDG 1 | BLDG 3      | BLDG 5     |
| OVERALL BLDG HGT                                 | 51'-5" | 57'-6"      | 47'-0 1/2" |
| GREATEST PLATE HGT.                              | 38'-9" | 44'-10 1/2" | 34'-5"     |
| LOWEST PLATE HGT.                                | 27'-7" | 38'-7"      | 25'-8"     |
| AVERAGE PLATE HGT.                               | 33'-2" | 41'-8 3/4"  | 30'-0 1/2" |

1 BUILDING 3 (TYPE 1A) - REAR ELEVATION  
1/8" = 1'-0"



TRANSPARENCY CALCS:  
FLOOR AREA: 590 SF  
REQUIRED: 148 SF  
PROVIDED: 160 SF  
PERCENTAGE: 27%

TRANSPARENCY CALCS:  
FLOOR AREA: 590 SF  
REQUIRED: 148 SF  
PROVIDED: 160 SF  
PERCENTAGE: 27%

TRANSPARENCY CALCS:  
FLOOR AREA: 590 SF  
REQUIRED: 148 SF  
PROVIDED: 160 SF  
PERCENTAGE: 27%

TRANSPARENCY CALCS:  
FLOOR AREA: 303 SF  
REQUIRED: 76 SF  
PROVIDED: 58 SF  
PERCENTAGE: 19%

| COLOR LEGEND SCHEME A* |  |
|------------------------|--|
| <b>A</b>               | <b>BODY COLOR 1:</b><br>MANUF: SHERWIN WILLIAMS, OR SIM.<br>COLOR: VIRTUAL TAUPE SW 7039 |
| <b>B</b>               | <b>BODY COLOR 2:</b><br>MANUF: SHERWIN WILLIAMS, OR SIM.<br>COLOR: URBANE BRONZE SW 7048 |
| <b>C</b>               | <b>STONE:</b><br>MANUF: CORONADO, OR SIM.<br>COLOR: IDAHO DRYSTACK - ANTIQUE BUFF        |
| <b>D</b>               | <b>TRIM:</b><br>MANUF: SHERWIN WILLIAMS, OR SIM.<br>COLOR: IRON GATE SW 2926             |
| <b>E</b>               | <b>ROOF:</b><br>MANUF: CERTAINTED, OR SIM.<br>COLOR: LANDMARK - HEATHER BLEND            |

\*ALL COLOR INFORMATION IS APPROXIMATE. MANUFACTURER AND FINAL TINT SUBJECT TO CHANGE

2 BUILDING 3 (TYPE 1A) - RIGHT ELEVATION  
1/8" = 1'-0"

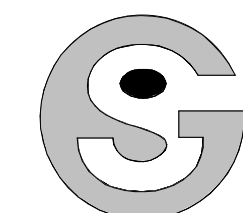
DRAWN BY:  
CHECKED BY:  
ISSUE DATE:  
12/07/2021

REVISIONS:

| NO. | DESCRIPTION |
|-----|-------------|
|     |             |
|     |             |
|     |             |
|     |             |
|     |             |

BLDG 3 (TYPE 1A) -  
ELEVATIONS

A2.5



Godden|Sudik  
ARCHITECTS  
SEE WHAT COULD BE  
303.455.4437  
www.goddensudik.com

5975 S. Quebec Street  
Suite 250  
Centennial, CO 80111

NOT FOR  
CONSTRUCTION



TRANSPARENCY CALCS:  
FLOOR AREA: 1499 SF  
REQUIRED: 376 SF  
PROVIDED: 464 SF  
PERCENTAGE: 31%

TRANSPARENCY CALCS:  
FLOOR AREA: 1499 SF  
REQUIRED: 376 SF  
PROVIDED: 464 SF  
PERCENTAGE: 31%

TRANSPARENCY CALCS:  
FLOOR AREA: 1499 SF  
REQUIRED: 376 SF  
PROVIDED: 464 SF  
PERCENTAGE: 31%

TRANSPARENCY CALCS:  
FLOOR AREA: 834 SF  
REQUIRED: 209 SF  
PROVIDED: 233 SF  
PERCENTAGE: 28%

| BUILDING 1B - BUILDING HEIGHTS - FRONT ELEVATION |            |            |            |
|--|------------|------------|------------|
|  | BLDG 2     | BLDG 4     | BLDG 6     |
| OVERALL BLDG HGT                                 | 65'-4"     | 47'-8 1/2" | 46'-5 1/2" |
| GREATEST PLATE HGT.                              | 49'-2 1/2" | 31'-7"     | 30'-4"     |
| LOWEST PLATE HGT.                                | 36'-11"    | 19'-3"     | 26'-8"     |
| AVERAGE PLATE HGT.                               | 43'-0 3/4" | 25'-5"     | 28'-6"     |

| BUILDING 1B - BUILDING HEIGHTS - LEFT ELEVATION |             |             |             |
|---|-------------|-------------|-------------|
|   | BLDG 2      | BLDG 4      | BLDG 6      |
| OVERALL BLDG HGT                                | 63'-10 1/2" | 47'-10 1/2" | 43'-0"      |
| GREATEST PLATE HGT.                             | 47'-9"      | 31'-9"      | 26'-10 1/2" |
| LOWEST PLATE HGT.                               | 3'-2"       | 9'-11 1/2"  | 24'-3"      |
| AVERAGE PLATE HGT.                              | 41'-11 1/2" | 20'-10 1/4" | 25'-6 3/4"  |

1 BUILDING 4 (TYPE 1B) - FRONT ELEVATION  
1/8" = 1'-0"



TRANSPARENCY CALCS:  
FLOOR AREA: 590 SF  
REQUIRED: 148 SF  
PROVIDED: 180 SF  
PERCENTAGE: 27%

TRANSPARENCY CALCS:  
FLOOR AREA: 590 SF  
REQUIRED: 148 SF  
PROVIDED: 180 SF  
PERCENTAGE: 27%

TRANSPARENCY CALCS:  
FLOOR AREA: 590 SF  
REQUIRED: 148 SF  
PROVIDED: 180 SF  
PERCENTAGE: 27%

TRANSPARENCY CALCS:  
FLOOR AREA: 420 SF  
REQUIRED: 105 SF  
PROVIDED: 112 SF  
PERCENTAGE: 28%

| COLOR LEGEND SCHEME B* |   |
|------------------------|---|
| <b>F</b>               | <b>BODY COLOR 1:</b><br>MANUF: SHERWIN WILLIAMS, OR SIM.<br>COLOR: WARM PEWTER SW 9572  |
| <b>G</b>               | <b>BODY COLOR 2:</b><br>MANUF: SHERWIN WILLIAMS, OR SIM.<br>COLOR: PEWTER GREEN SW 6208 |
| <b>H</b>               | <b>STONE:</b><br>MANUF: CORONADO, OR SIM.<br>COLOR: EASTERN MTN. LEDGE - HURON          |
| <b>I</b>               | <b>TRIM:</b><br>MANUF: SHERWIN WILLIAMS, OR SIM.<br>COLOR: CAVIAR SW 6990               |
| <b>J</b>               | <b>ROOF:</b><br>MANUF: CERTAINTED, OR SIM.<br>COLOR: LANDMARK - PEWTERWOOD              |

\*ALL COLOR INFORMATION IS APPROXIMATE. MANUFACTURER AND FINAL TINT SUBJECT TO CHANGE

2 BUILDING 4 (TYPE 1B) - LEFT ELEVATION  
1/8" = 1'-0"

COPPER RIDGE VILLAGE

STEAMBOAT SPRINGS, CO

NOT FOR  
CONSTRUCTION

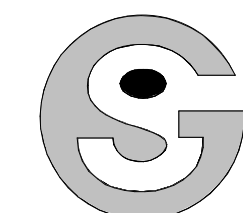
DRAWN BY:  
CHECKED BY:  
ISSUE DATE:  
12/07/2021

REVISIONS:

|  |  |
|--|--|
|  |  |
|  |  |
|  |  |
|  |  |
|  |  |
|  |  |
|  |  |
|  |  |
|  |  |
|  |  |

BLDG 4 (TYPE 1B) - ELEVATIONS

A2.6



NOT FOR  
CONSTRUCTION



**TRANSPARENCY CALCS:**  
FLOOR AREA: 1304 SF  
REQUIRED: 326 SF  
PROVIDED: 479 SF  
PERCENTAGE: 37%

**TRANSPARENCY CALCS:**  
FLOOR AREA: 1304 SF  
REQUIRED: 326 SF  
PROVIDED: 479 SF  
PERCENTAGE: 37%

**TRANSPARENCY CALCS:**  
FLOOR AREA: 1304 SF  
REQUIRED: 326 SF  
PROVIDED: 479 SF  
PERCENTAGE: 37%

| BUILDING 1B - BUILDING HEIGHTS - REAR ELEVATION |            |            |             |
|---|------------|------------|-------------|
|   | BLDG 2     | BLDG 4     | BLDG 6      |
| OVERALL BLDG HGT.                               | 53'-4 1/2" | 31'-0 1/2" | 45'-9 1/2"  |
| GREATEST PLATE HGT.                             | 37'-3"     | 14'-1 1/2" | 29'-8"      |
| LOWEST PLATE HGT.                               | 33'-6"     | 9'-3 1/2"  | 24'-3"      |
| AVERAGE PLATE HGT.                              | 35'-4 1/2" | 12'-1 1/4" | 26'-11 1/2" |

| BUILDING 1B - BUILDING HEIGHTS - RIGHT ELEVATION |             |             |             |
|--|-------------|-------------|-------------|
|  | BLDG 2      | BLDG 4      | BLDG 6      |
| OVERALL BLDG HGT.                                | 53'-1 1/2"  | 35'-2"      | 44'-0 1/2"  |
| GREATEST PLATE HGT.                              | 37'-9 1/2"  | 19'-0 1/2"  | 18'-9 1/2"  |
| LOWEST PLATE HGT.                                | 36'-5"      | 14'-1 1/2"  | 15'-2"      |
| AVERAGE PLATE HGT.                               | 37'-11 1/4" | 16'-11 3/4" | 16'-11 3/4" |

1 BUILDING 4 (TYPE 1B) - REAR ELEVATION  
1/8" = 1'-0"



**TRANSPARENCY CALCS:**  
FLOOR AREA: 590 SF  
REQUIRED: 148 SF  
PROVIDED: 160 SF  
PERCENTAGE: 27%

**TRANSPARENCY CALCS:**  
FLOOR AREA: 590 SF  
REQUIRED: 148 SF  
PROVIDED: 160 SF  
PERCENTAGE: 27%

**TRANSPARENCY CALCS:**  
FLOOR AREA: 590 SF  
REQUIRED: 148 SF  
PROVIDED: 160 SF  
PERCENTAGE: 27%

| COLOR LEGEND SCHEME B* |   |
|------------------------|---|
| F                      | <b>BODY COLOR 1:</b><br>MANUF: SHERWIN WILLIAMS, OR SIM.<br>COLOR: WARM PEWTER SW 9572  |
| G                      | <b>BODY COLOR 2:</b><br>MANUF: SHERWIN WILLIAMS, OR SIM.<br>COLOR: PEWTER GREEN SW 6208 |
| H                      | <b>STONE:</b><br>MANUF: CORONADO, OR SIM.<br>COLOR: EASTERN MTN. LEDGE - HURON          |
| I                      | <b>TRIM:</b><br>MANUF: SHERWIN WILLIAMS, OR SIM.<br>COLOR: CAVIAR SW 6990               |
| J                      | <b>ROOF:</b><br>MANUF: CERTAINTED, OR SIM.<br>COLOR: LANDMARK - PEWTERWOOD              |

\*ALL COLOR INFORMATION IS APPROXIMATE. MANUFACTURER AND FINAL TINT SUBJECT TO CHANGE

2 BUILDING 4 (TYPE 1B) - RIGHT ELEVATION  
1/8" = 1'-0"

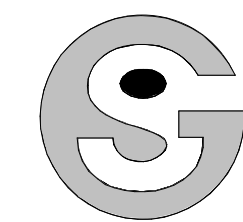
COPPER RIDGE VILLAGE

STEAMBOAT SPRINGS, CO

|                      |                           |
|----------------------|---------------------------|
| NOT FOR CONSTRUCTION | DRAWN BY:                 |
|                      | CHECKED BY:               |
|                      | ISSUE DATE:<br>12/07/2021 |
|                      | REVISIONS:                |

BLDG 4 (TYPE 1B) - ELEVATIONS

A2.7



NOT FOR  
CONSTRUCTION

COPPER RIDGE VILLAGE

STEAMBOAT SPRINGS, CO



TRANSPARENCY CALCS:  
FLOOR AREA: 1499 SF  
REQUIRED: 375 SF  
PROVIDED: 519 SF  
PERCENTAGE: 34%

TRANSPARENCY CALCS:  
FLOOR AREA: 1499 SF  
REQUIRED: 375 SF  
PROVIDED: 550 SF  
PERCENTAGE: 37%

TRANSPARENCY CALCS:  
FLOOR AREA: 1499 SF  
REQUIRED: 375 SF  
PROVIDED: 650 SF  
PERCENTAGE: 37%

TRANSPARENCY CALCS:  
FLOOR AREA: 1499 SF  
REQUIRED: 375 SF  
PROVIDED: 650 SF  
PERCENTAGE: 43%

| BUILDING 1A - BUILDING HEIGHTS - FRONT ELEVATION |            |            |            |
|--|------------|------------|------------|
|  | BLDG 1     | BLDG 3     | BLDG 5     |
| OVERALL BLDG HGT.                                | 53'-7 3/4" | 51'-3"     | 77'-1"     |
| GREATEST PLATE HGT.                              | 41'-0"     | 38'-7"     | 64'-6"     |
| LOWEST PLATE HGT.                                | 36'-1"     | 34'-10"    | 34'-4 1/2" |
| AVERAGE PLATE HGT.                               | 38'-6 1/2" | 36'-8 1/2" | 49'-4 3/4" |

| BUILDING 1A - BUILDING HEIGHTS - LEFT ELEVATION |             |             |            |
|---|-------------|-------------|------------|
|   | BLDG 1      | BLDG 3      | BLDG 5     |
| OVERALL BLDG HGT.                               | 49'-1"      | 57'-6 1/2"  | 77'-1 1/2" |
| GREATEST PLATE HGT.                             | 36'-5"      | 44'-11"     | 64'-6"     |
| LOWEST PLATE HGT.                               | 23'-5 1/2"  | 37'-0"      | 49'-0 1/2" |
| AVERAGE PLATE HGT.                              | 29'-11 1/4" | 40'-11 1/2" | 59'-9 1/4" |

1 BUILDING 5 (TYPE 1A) - FRONT ELEVATION  
1/8" = 1'-0"



TRANSPARENCY CALCS:  
FLOOR AREA: 627 SF  
REQUIRED: 157 SF  
PROVIDED: 160 SF  
PERCENTAGE: 25.5%

TRANSPARENCY CALCS:  
FLOOR AREA: 627 SF  
REQUIRED: 157 SF  
PROVIDED: 160 SF  
PERCENTAGE: 25.5%

TRANSPARENCY CALCS:  
FLOOR AREA: 627 SF  
REQUIRED: 157 SF  
PROVIDED: 160 SF  
PERCENTAGE: 25.5%

TRANSPARENCY CALCS:  
FLOOR AREA: 421 SF  
REQUIRED: 108 SF  
PROVIDED: 112 SF  
PERCENTAGE: 0%

| COLOR LEGEND SCHEME A* |  |
|------------------------|--|
| <b>A</b>               | <b>BODY COLOR 1:</b><br>MANUF: SHERWIN WILLIAMS, OR SIM.<br>COLOR: VIRTUAL TAUPE SW 7039 |
| <b>B</b>               | <b>BODY COLOR 2:</b><br>MANUF: SHERWIN WILLIAMS, OR SIM.<br>COLOR: URBANE BRONZE SW 7048 |
| <b>C</b>               | <b>STONE:</b><br>MANUF: CORONADO, OR SIM.<br>COLOR: IDAHO DRYSTACK - ANTIQUE BUFF        |
| <b>D</b>               | <b>TRIM:</b><br>MANUF: SHERWIN WILLIAMS, OR SIM.<br>COLOR: IRON GATE SW 2926             |
| <b>E</b>               | <b>ROOF:</b><br>MANUF: CERTAINTED, OR SIM.<br>COLOR: LANDMARK - HEATHER BLEND            |

\*ALL COLOR INFORMATION IS APPROXIMATE. MANUFACTURER AND FINAL TINT SUBJECT TO CHANGE

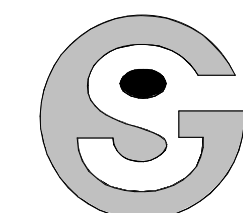
2 BUILDING 5 (TYPE 1A) - LEFT ELEVATION  
1/8" = 1'-0"

DRAWN BY:  
CHECKED BY:  
ISSUE DATE:  
12/07/2021

REVISIONS:

|  |  |  |
|--|--|--|
|  |  |  |
|  |  |  |
|  |  |  |
|  |  |  |
|  |  |  |
|  |  |  |
|  |  |  |
|  |  |  |
|  |  |  |
|  |  |  |

BLDG 5 (TYPE 1A) - ELEVATIONS



NOT FOR  
CONSTRUCTION

COPPER RIDGE VILLAGE

STEAMBOAT SPRINGS, CO

NOT FOR  
CONSTRUCTION

DRAWN BY:

CHECKED BY:

ISSUE DATE:  
12/07/2021

REVISIONS:

|  |  |
|--|--|
|  |  |
|  |  |
|  |  |
|  |  |
|  |  |
|  |  |
|  |  |
|  |  |
|  |  |
|  |  |

BLDG 5 (TYPE 1A) -  
ELEVATIONS

A2.9



**TRANSPARENCY CALCS:**  
FLOOR AREA: 1392 SF  
REQUIRED: 348 SF  
PROVIDED: 536 SF  
PERCENTAGE: 38%

**TRANSPARENCY CALCS:**  
FLOOR AREA: 1392 SF  
REQUIRED: 348 SF  
PROVIDED: 536 SF  
PERCENTAGE: 38%

**TRANSPARENCY CALCS:**  
FLOOR AREA: 1392 SF  
REQUIRED: 348 SF  
PROVIDED: 536 SF  
PERCENTAGE: 38%

| BUILDING 1A - BUILDING HEIGHTS - REAR ELEVATION |             |             |             |
|---|-------------|-------------|-------------|
|   | BLDG 1      | BLDG 3      | BLDG 5      |
| OVERALL BLDG HGT                                | 41'-4"      | 58'-8 1/2"  | 60'-6 1/2"  |
| GREATEST PLATE HGT.                             | 28'-8 1/2"  | 46'-1"      | 47'-10 1/2" |
| LOWEST PLATE HGT.                               | 23'-3"      | 41'-8 1/2"  | 25'-8 1/2"  |
| AVERAGE PLATE HGT.                              | 25'-11 3/4" | 43'-10 3/4" | 39'-11 3/4" |

| BUILDING 1A - BUILDING HEIGHTS - RIGHT ELEVATION |        |             |            |
|--|--------|-------------|------------|
|  | BLDG 1 | BLDG 3      | BLDG 5     |
| OVERALL BLDG HGT                                 | 51'-5" | 57'-6"      | 47'-0 1/2" |
| GREATEST PLATE HGT.                              | 38'-9" | 44'-10 1/2" | 34'-5"     |
| LOWEST PLATE HGT.                                | 27'-7" | 38'-7"      | 25'-8"     |
| AVERAGE PLATE HGT.                               | 33'-2" | 41'-8 3/4"  | 30'-0 1/2" |

| COLOR LEGEND SCHEME A* |  |
|------------------------|--|
| <b>A</b>               | <b>BODY COLOR 1:</b><br>MANUF: SHERWIN WILLIAMS, OR SIM.<br>COLOR: VIRTUAL TAUPE SW 7039 |
| <b>B</b>               | <b>BODY COLOR 2:</b><br>MANUF: SHERWIN WILLIAMS, OR SIM.<br>COLOR: URBANE BRONZE SW 7048 |
| <b>C</b>               | <b>STONE:</b><br>MANUF: CORONADO, OR SIM.<br>COLOR: IDAHO DRYSTACK - ANTIQUE BUFF        |
| <b>D</b>               | <b>TRIM:</b><br>MANUF: SHERWIN WILLIAMS, OR SIM.<br>COLOR: IRON GATE SW 2926             |
| <b>E</b>               | <b>ROOF:</b><br>MANUF: CERTAINTED, OR SIM.<br>COLOR: LANDMARK - HEATHER BLEND            |

\*ALL COLOR INFORMATION IS APPROXIMATE. MANUFACTURER AND FINAL TINT SUBJECT TO CHANGE

1 BUILDING 5 (TYPE 1A) - REAR ELEVATION  
1/8" = 1'-0"



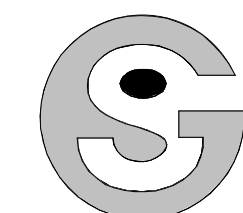
**TRANSPARENCY CALCS:**  
FLOOR AREA: 590 SF  
REQUIRED: 148 SF  
PROVIDED: 160 SF  
PERCENTAGE: 27%

**TRANSPARENCY CALCS:**  
FLOOR AREA: 590 SF  
REQUIRED: 148 SF  
PROVIDED: 160 SF  
PERCENTAGE: 27%

**TRANSPARENCY CALCS:**  
FLOOR AREA: 590 SF  
REQUIRED: 148 SF  
PROVIDED: 160 SF  
PERCENTAGE: 27%

**TRANSPARENCY CALCS:**  
FLOOR AREA: 286 SF  
REQUIRED: 72 SF  
PROVIDED: 53 SF  
PERCENTAGE: 19%

2 BUILDING 5 (TYPE 1A) - RIGHT ELEVATION  
1/8" = 1'-0"



NOT FOR  
CONSTRUCTION

COPPER RIDGE VILLAGE  
STEAMBOAT SPRINGS, CO



TRANSPARENCY CALCS:  
FLOOR AREA: 1499 SF  
REQUIRED: 375 SF  
PROVIDED: 464 SF  
PERCENTAGE: 31%

TRANSPARENCY CALCS:  
FLOOR AREA: 1499 SF  
REQUIRED: 375 SF  
PROVIDED: 464 SF  
PERCENTAGE: 31%

TRANSPARENCY CALCS:  
FLOOR AREA: 1499 SF  
REQUIRED: 375 SF  
PROVIDED: 464 SF  
PERCENTAGE: 31%

TRANSPARENCY CALCS:  
FLOOR AREA: 1499 SF  
REQUIRED: 375 SF  
PROVIDED: 627 SF  
PERCENTAGE: 42%

| BUILDING 1B - BUILDING HEIGHTS - FRONT ELEVATION |            |            |            |
|--|------------|------------|------------|
|  | BLDG 2     | BLDG 4     | BLDG 6     |
| OVERALL BLDG HGT.                                | 65'-4"     | 47'-8 1/2" | 46'-5 1/2" |
| GREATEST PLATE HGT.                              | 49'-2 1/2" | 31'-7"     | 30'-4"     |
| LOWEST PLATE HGT.                                | 36'-11"    | 19'-3"     | 26'-8"     |
| AVERAGE PLATE HGT.                               | 43'-0 3/4" | 25'-5"     | 28'-6"     |

| BUILDING 1B - BUILDING HEIGHTS - LEFT ELEVATION |             |             |             |
|---|-------------|-------------|-------------|
|   | BLDG 2      | BLDG 4      | BLDG 6      |
| OVERALL BLDG HGT.                               | 63'-10 1/2" | 47'-10 1/2" | 43'-0"      |
| GREATEST PLATE HGT.                             | 47'-9"      | 31'-9"      | 26'-10 1/2" |
| LOWEST PLATE HGT.                               | 3'-2"       | 9'-11 1/2"  | 24'-3"      |
| AVERAGE PLATE HGT.                              | 41'-11 1/2" | 20'-10 1/4" | 25'-6 3/4"  |

1 BUILDING 6 (TYPE 1B) - FRONT ELEVATION  
1/8" = 1'-0"



TRANSPARENCY CALCS:  
FLOOR AREA: 590 SF  
REQUIRED: 148 SF  
PROVIDED: 160 SF  
PERCENTAGE: 27%

TRANSPARENCY CALCS:  
FLOOR AREA: 590 SF  
REQUIRED: 148 SF  
PROVIDED: 160 SF  
PERCENTAGE: 27%

TRANSPARENCY CALCS:  
FLOOR AREA: 590 SF  
REQUIRED: 148 SF  
PROVIDED: 160 SF  
PERCENTAGE: 27%

TRANSPARENCY CALCS:  
FLOOR AREA: 420 SF  
REQUIRED: 105 SF  
PROVIDED: 112 SF  
PERCENTAGE: 26%

COLOR LEGEND SCHEME B\*

- F BODY COLOR 1:**  
MANUF: SHERWIN WILLIAMS, OR SIM.  
COLOR: WARM PEWTER SW 9572
- G BODY COLOR 2:**  
MANUF: SHERWIN WILLIAMS, OR SIM.  
COLOR: PEWTER GREEN SW 6206
- H STONE:**  
MANUF: CORONADO, OR SIM.  
COLOR: EASTERN MTN. LEDGE - HURON
- I TRIM:**  
MANUF: SHERWIN WILLIAMS, OR SIM.  
COLOR: CAVIAR SW 6990
- J ROOF:**  
MANUF: CERTANTEED, OR SIM.  
COLOR: LANDMARK - PEWTERWOOD

\*ALL COLOR INFORMATION IS APPROXIMATE. MANUFACTURER AND FINAL TINT SUBJECT TO CHANGE

2 BUILDING 6 (TYPE 1B) - LEFT ELEVATION  
1/8" = 1'-0"

DRAWN BY:

CHECKED BY:

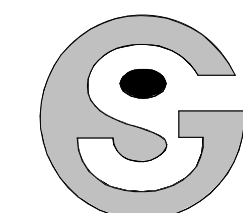
ISSUE DATE:  
12/07/2021

REVISIONS:

| NO. | DESCRIPTION |
|-----|-------------|
|     |             |
|     |             |
|     |             |
|     |             |
|     |             |
|     |             |
|     |             |
|     |             |
|     |             |
|     |             |

BLDG 6 (TYPE 1B) -  
ELEVATIONS

A2.10



NOT FOR  
CONSTRUCTION

COPPER RIDGE VILLAGE

STEAMBOAT SPRINGS, CO



TRANSPARENCY CALCS:  
FLOOR AREA: 1304 SF  
REQUIRED: 326 SF  
PROVIDED: 479 SF  
PERCENTAGE: 37%

TRANSPARENCY CALCS:  
FLOOR AREA: 1304 SF  
REQUIRED: 326 SF  
PROVIDED: 479 SF  
PERCENTAGE: 37%

TRANSPARENCY CALCS:  
FLOOR AREA: 1304 SF  
REQUIRED: 326 SF  
PROVIDED: 479 SF  
PERCENTAGE: 37%

TRANSPARENCY CALCS:  
FLOOR AREA: 1328 SF  
REQUIRED: 332 SF  
PROVIDED: 413 SF  
PERCENTAGE: 31%

| BUILDING 1B - BUILDING HEIGHTS - REAR ELEVATION |            |            |             |
|---|------------|------------|-------------|
|   | BLDG 2     | BLDG 4     | BLDG 6      |
| OVERALL BLDG HGT.                               | 53'-4 1/2" | 31'-0 1/2" | 45'-9 1/2"  |
| GREATEST PLATE HGT.                             | 37'-3"     | 14'-1 1/2" | 29'-8"      |
| LOWEST PLATE HGT.                               | 33'-6"     | 9'-3 1/2"  | 24'-3"      |
| AVERAGE PLATE HGT.                              | 35'-4 1/2" | 12'-1 1/4" | 26'-11 1/2" |

| BUILDING 1B - BUILDING HEIGHTS - RIGHT ELEVATION |             |             |             |
|--|-------------|-------------|-------------|
|  | BLDG 2      | BLDG 4      | BLDG 6      |
| OVERALL BLDG HGT.                                | 53'-1 1/2"  | 35'-2"      | 44'-0 1/2"  |
| GREATEST PLATE HGT.                              | 37'-9 1/2"  | 19'-0 1/2"  | 18'-9 1/2"  |
| LOWEST PLATE HGT.                                | 36'-5"      | 14'-1 1/2"  | 15'-2"      |
| AVERAGE PLATE HGT.                               | 37'-11 1/4" | 16'-11 3/4" | 16'-11 3/4" |

1 BUILDING 6 (TYPE 1B) - REAR ELEVATION  
1/8" = 1'-0"



TRANSPARENCY CALCS:  
FLOOR AREA: 590 SF  
REQUIRED: 148 SF  
PROVIDED: 160 SF  
PERCENTAGE: 27%

TRANSPARENCY CALCS:  
FLOOR AREA: 590 SF  
REQUIRED: 148 SF  
PROVIDED: 160 SF  
PERCENTAGE: 27%

TRANSPARENCY CALCS:  
FLOOR AREA: 598 SF  
REQUIRED: 150 SF  
PROVIDED: 138 SF  
PERCENTAGE: 23%

| COLOR LEGEND SCHEME B* |   |
|------------------------|---|
| <b>BODY COLOR 1:</b>   | MANUF: SHERWIN WILLIAMS, OR SIM.<br>COLOR: WARM PEWTER SW 9572  |
| <b>BODY COLOR 2:</b>   | MANUF: SHERWIN WILLIAMS, OR SIM.<br>COLOR: PEWTER GREEN SW 6206 |
| <b>STONE:</b>          | MANUF: CORONADO, OR SIM.<br>COLOR: EASTERN MTN. LEDGE - HURON   |
| <b>TRIM:</b>           | MANUF: SHERWIN WILLIAMS, OR SIM.<br>COLOR: CAVIAR SW 6990       |
| <b>ROOF:</b>           | MANUF: CERTAINTED, OR SIM.<br>COLOR: LANDMARK - PEWTERWOOD      |

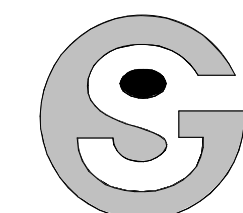
\*ALL COLOR INFORMATION IS APPROXIMATE. MANUFACTURER AND FINAL TINT SUBJECT TO CHANGE

2 BUILDING 6 (TYPE 1B) - RIGHT ELEVATION  
1/8" = 1'-0"

DRAWN BY:  
CHECKED BY:  
ISSUE DATE:  
12/07/2021  
REVISIONS:

BLDG 6 (TYPE 1B) - ELEVATIONS

A2.11



Godden|Sudik  
ARCHITECTS  
SEE WHAT COULD BE  
303.455.4437  
www.goddensudik.com

5975 S. Quebec Street  
Suite 250  
Centennial, CO 80111

NOT FOR  
CONSTRUCTION

COPPER RIDGE VILLAGE

STEAMBOAT SPRINGS, CO



TRANSPARENCY CALCS:  
FLOOR AREA: 992 SF  
REQUIRED: 248 SF  
PROVIDED: 345 SF  
PERCENTAGE: 35%

TRANSPARENCY CALCS:  
FLOOR AREA: 992 SF  
REQUIRED: 248 SF  
PROVIDED: 381 SF  
PERCENTAGE: 38%

TRANSPARENCY CALCS:  
FLOOR AREA: 992 SF  
REQUIRED: 248 SF  
PROVIDED: 381 SF  
PERCENTAGE: 38%

TRANSPARENCY CALCS:  
FLOOR AREA: 1065 SF  
REQUIRED: 266 SF  
PROVIDED: 429 SF  
PERCENTAGE: 40%

1 BUILDING 7 (TYPE 2) - FRONT ELEVATION  
1/8" = 1'-0"



TRANSPARENCY CALCS:  
FLOOR AREA: 618 SF  
REQUIRED: 154 SF  
PROVIDED: 157 SF  
PERCENTAGE: 25%

TRANSPARENCY CALCS:  
FLOOR AREA: 618 SF  
REQUIRED: 154 SF  
PROVIDED: 157 SF  
PERCENTAGE: 25%

TRANSPARENCY CALCS:  
FLOOR AREA: 618 SF  
REQUIRED: 154 SF  
PROVIDED: 157 SF  
PERCENTAGE: 25%

TRANSPARENCY CALCS:  
FLOOR AREA: 658 SF  
REQUIRED: 165 SF  
PROVIDED: 189 SF  
PERCENTAGE: 29%

| COLOR LEGEND SCHEME A* |  |
|------------------------|--|
| <b>A</b>               | <b>BODY COLOR 1:</b><br>MANUF: SHERWIN WILLIAMS, OR SIM.<br>COLOR: VIRTUAL TAUPE SW 7039 |
| <b>B</b>               | <b>BODY COLOR 2:</b><br>MANUF: SHERWIN WILLIAMS, OR SIM.<br>COLOR: URBANE BRONZE SW 7048 |
| <b>C</b>               | <b>STONE:</b><br>MANUF: CORONADO, OR SIM.<br>COLOR: IDAHO DRYSTACK - ANTIQUE BUFF        |
| <b>D</b>               | <b>TRIM:</b><br>MANUF: SHERWIN WILLIAMS, OR SIM.<br>COLOR: IRON GATE SW 2926             |
| <b>E</b>               | <b>ROOF:</b><br>MANUF: CERTAINTEED, OR SIM.<br>COLOR: LANDMARK - HEATHER BLEND           |

\*ALL COLOR INFORMATION IS APPROXIMATE. MANUFACTURER AND FINAL TINT SUBJECT TO CHANGE

2 BUILDING 7 (TYPE 2) - LEFT ELEVATION  
1/8" = 1'-0"

NOT FOR CONSTRUCTION

DRAWN BY:

CHECKED BY:

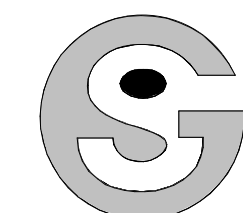
ISSUE DATE:  
12/07/2021

REVISIONS:

| NO. | DESCRIPTION |
|-----|-------------|
|     |             |
|     |             |
|     |             |
|     |             |
|     |             |
|     |             |
|     |             |
|     |             |
|     |             |
|     |             |

BLDG 7 (TYPE 2) - ELEVATIONS

A2.12



NOT FOR  
CONSTRUCTION



TRANSPARENCY CALCS:  
FLOOR AREA: 933 SF  
REQUIRED: 233 SF  
PROVIDED: 381 SF  
PERCENTAGE: 40%

TRANSPARENCY CALCS:  
FLOOR AREA: 933 SF  
REQUIRED: 233 SF  
PROVIDED: 381 SF  
PERCENTAGE: 40%

TRANSPARENCY CALCS:  
FLOOR AREA: 933 SF  
REQUIRED: 233 SF  
PROVIDED: 381 SF  
PERCENTAGE: 40%

TRANSPARENCY CALCS:  
FLOOR AREA: 975 SF  
REQUIRED: 244 SF  
PROVIDED: 322 SF  
PERCENTAGE: 33%

1 BUILDING 7 (TYPE 2) - REAR ELEVATION  
1/8" = 1'-0"



TRANSPARENCY CALCS:  
FLOOR AREA: 627 SF  
REQUIRED: 157 SF  
PROVIDED: 160 SF  
PERCENTAGE: 25.5%

TRANSPARENCY CALCS:  
FLOOR AREA: 627 SF  
REQUIRED: 157 SF  
PROVIDED: 160 SF  
PERCENTAGE: 25.5%

TRANSPARENCY CALCS:  
FLOOR AREA: 627 SF  
REQUIRED: 157 SF  
PROVIDED: 160 SF  
PERCENTAGE: 25.5%

TRANSPARENCY CALCS:  
FLOOR AREA: 421 SF  
REQUIRED: 106 SF  
PROVIDED: 112 SF  
PERCENTAGE: 26%

COLOR LEGEND SCHEME A\*

|          |  |
|----------|--|
| <b>A</b> | <b>BODY COLOR 1:</b><br>MANUF: SHERWIN WILLIAMS, OR SIM.<br>COLOR: VIRTUAL TAUPE SW 7039 |
| <b>B</b> | <b>BODY COLOR 2:</b><br>MANUF: SHERWIN WILLIAMS, OR SIM.<br>COLOR: URBANE BRONZE SW 7048 |
| <b>C</b> | <b>STONE:</b><br>MANUF: CORONADO, OR SIM.<br>COLOR: IDAHO DRYSTACK - ANTIQUE BUFF        |
| <b>D</b> | <b>TRIM:</b><br>MANUF: SHERWIN WILLIAMS, OR SIM.<br>COLOR: IRON GATE SW 2926             |
| <b>E</b> | <b>ROOF:</b><br>MANUF: CERTAINTED, OR SIM.<br>COLOR: LANDMARK - HEATHER BLEND            |

\*ALL COLOR INFORMATION IS APPROXIMATE. MANUFACTURER AND FINAL TINT SUBJECT TO CHANGE

2 BUILDING 7 (TYPE 2) - LEFT ELEVATION  
1/8" = 1'-0"

COPPER RIDGE VILLAGE  
STEAMBOAT SPRINGS, CO

NOT FOR  
CONSTRUCTION

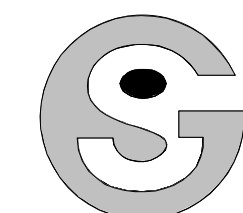
DRAWN BY:  
CHECKED BY:  
ISSUE DATE:  
12/07/2021

REVISIONS:

|  |  |
|--|--|
|  |  |
|  |  |
|  |  |
|  |  |
|  |  |
|  |  |
|  |  |
|  |  |
|  |  |
|  |  |

BLDG 7 (TYPE 2) - ELEVATIONS

A2.13



Godden|Sudik  
ARCHITECTS  
SEE WHAT COULD BE  
303.455.4437  
www.goddensudik.com

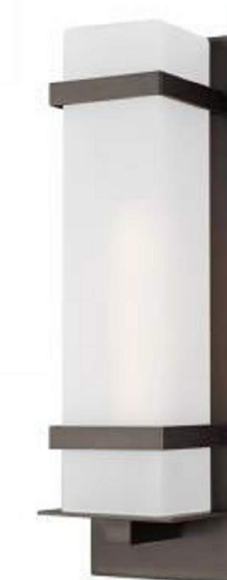
5975 S. Quebec Street  
Suite 250  
Centennial, CO 80111

NOT FOR  
CONSTRUCTION

COPPER RIDGE VILLAGE  
STEAMBOAT SPRINGS, CO

GENERATION LIGHTING

8720701-71: Large One Light Outdoor Wall Lantern



**Dimensions:**  
Width: 8"  
Height: 24 5/8"  
Weight: 9.35 lbs.  
Extends: 6 3/4"  
Wire: 6 1/2" (color/Black/White)  
Mounting Proc: Screw(s)  
Connection: Mounted To Box

**Bulbs:**  
1 - Medium T10 60w Max. 120v - Not included  
0 - Medium A19 60w Max. 120v - Not included

- Features:**
- This fixture features mouth-blown glass and slight variations are an inherent part of the handcrafting process.
  - Easily converts to LED with optional replacement lamps
  - Meets Title 24 energy efficiency standards
  - Title 24 compliant if used with Joint Appendix (JA8) approved light bulbs listed in the California Energy Commission Appliance database.

**Material List:**  
1 Body - Aluminum - Antique Bronze

**Safety Listing:**  
Safety Listed for Wet Locations

**Instruction Sheets:**  
Trilingual (English, Spanish, and French)  
(990W8518301-8718301-8520701-8720701-ALB)  
Trilingual (English, Spanish, and French) (ALBAN-WALL)

**Collection:** Alban

Featured in the decorative Alban collection

1 A19 Medium 60 watt light bulb and 1 T10 Medium 60 watt light bulb

Etched opal glass shade

Easily converts to LED with optional replacement lamps

Meets Title 24 energy efficiency standards

UPC #:785652071171

Finish: Antique Bronze (71)

Shade / Glass / Diffuser Details:

| Part  | Material | Finish      | Quantity | Item Number | Length | Width | Height | Diameter | Filter Diameter | Shade Top Length | Shade Top Width | Shade Top Diameter |
|-------|----------|-------------|----------|-------------|--------|-------|--------|----------|-----------------|------------------|-----------------|--------------------|
| Shade | Glass    | Etched Opal | 1        |             | 5      | 5     | 21 1/8 |          |                 |                  |                 |                    |

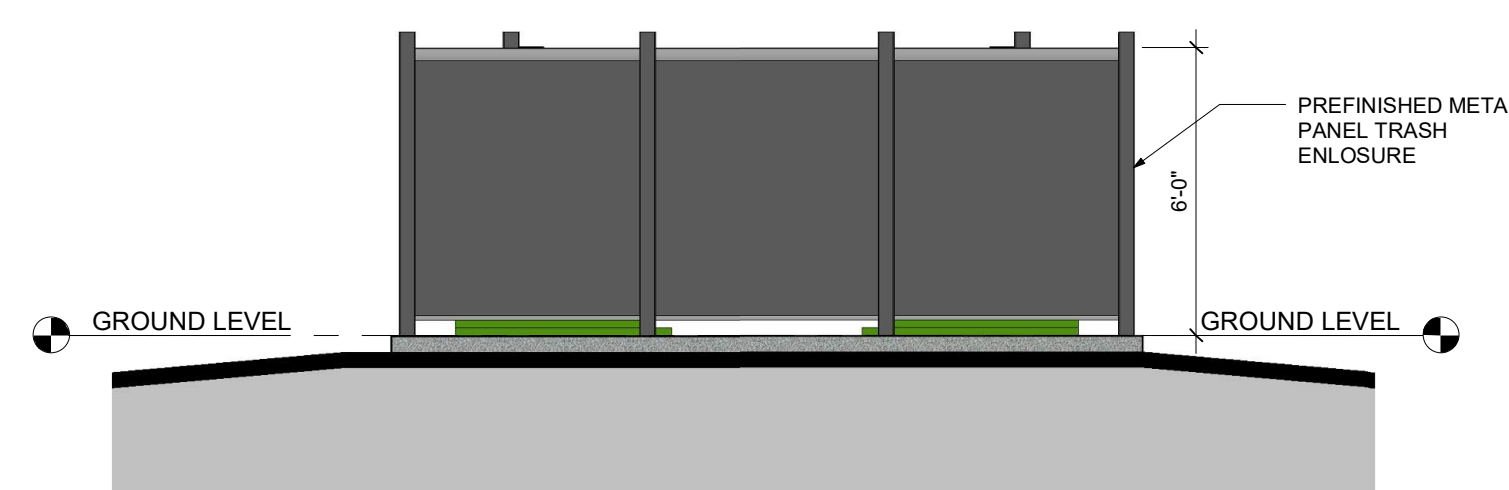
Backplate / Canopy Details:

| Type       | Height / Length | Width | Depth | Diameter | Outlet Box Up | Outlet Box Down |
|------------|-----------------|-------|-------|----------|---------------|-----------------|
| Back Plate | 24 5/8          | 8     | 3/4   |          | 12 5/16       |                 |

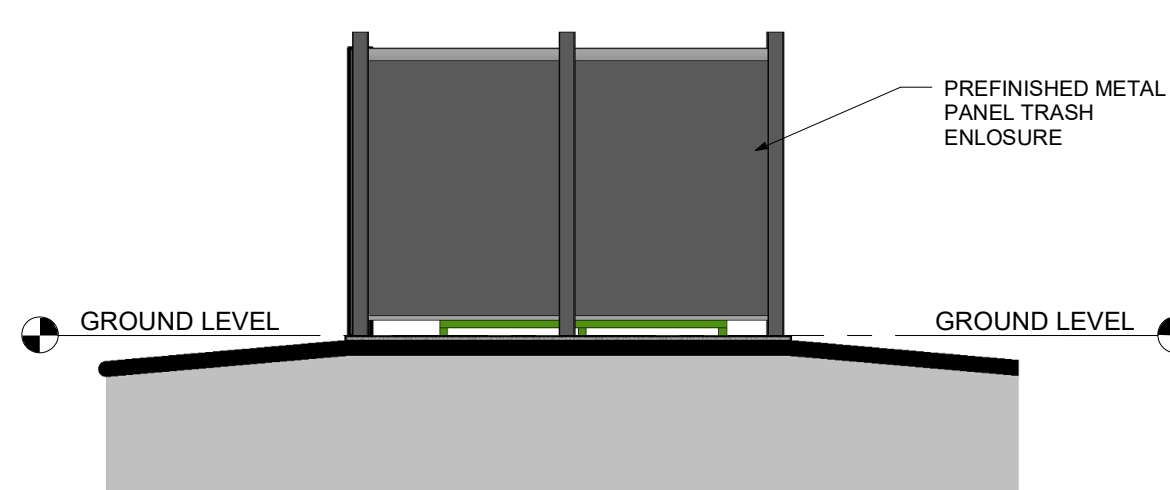
Shipping Information:

| Package Type | Product #  | Quantity | UPC          | Length | Width | Height | Cube   | Weight | Frt. Class | UPS Ship |
|--------------|------------|----------|--------------|--------|-------|--------|--------|--------|------------|----------|
| Individual   | 8518301-04 | 1        | 785652071171 | 29.5   | 11    | 10.25  | 1.925  | 11.3   | 175        | Yes      |
| NJ Pallet    |            | 36       |              | 48     | 40    | 70     | 77.778 | 405    |            | No       |
| NV Pallet    |            | 36       |              | 48     | 40    | 70     | 77.778 | 405    |            | No       |

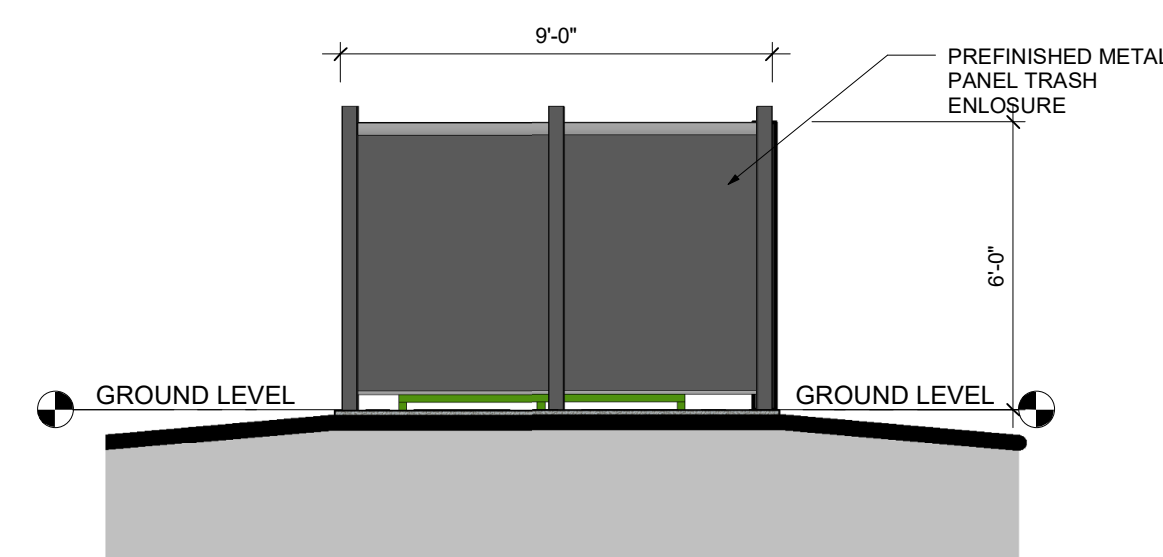
Generation Lighting reserves the right to revise the design of components of any product due to parts availability or change in safety listing standards without assuming any obligation or liability to modify any products previously manufactured and without notice. This literature depicts a product design that is the sole and exclusive property of Generation Lighting. In compliance with U.S. copyright and patent requirements, notification is hereby presented in this form that this literature, or the product it depicts, is not to be copied, altered or used in any manner without the express written consent of, or contrary to the best interests of Generation Lighting, a Visual Comfort & Co brand.



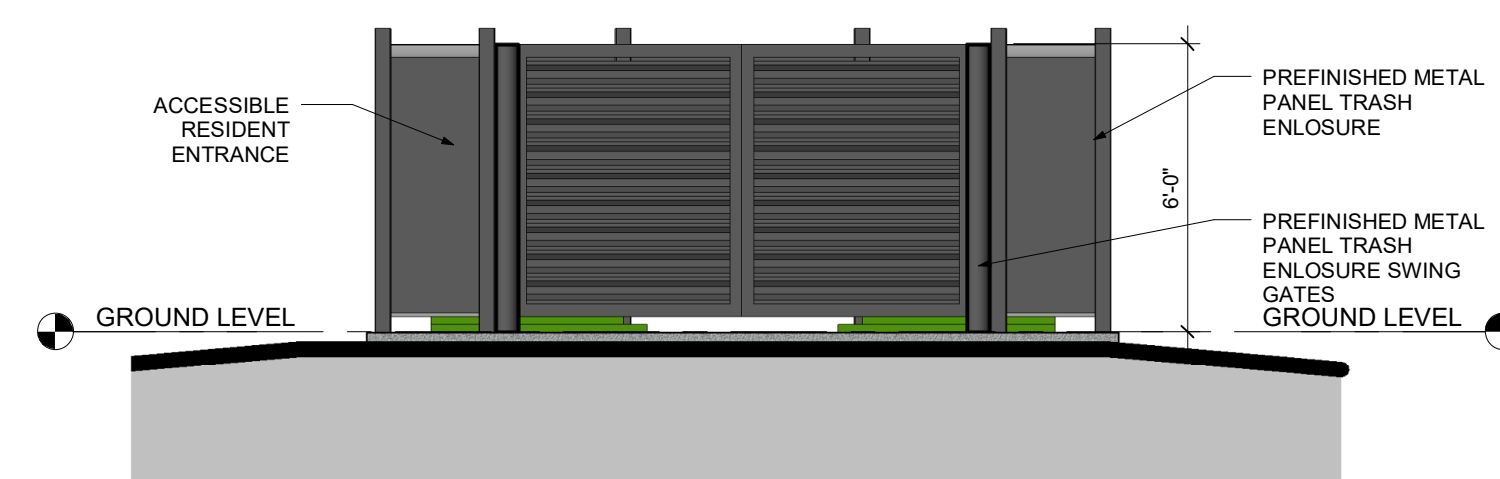
5 TRASH - REAR ELEVATION  
1/4" = 1'-0"



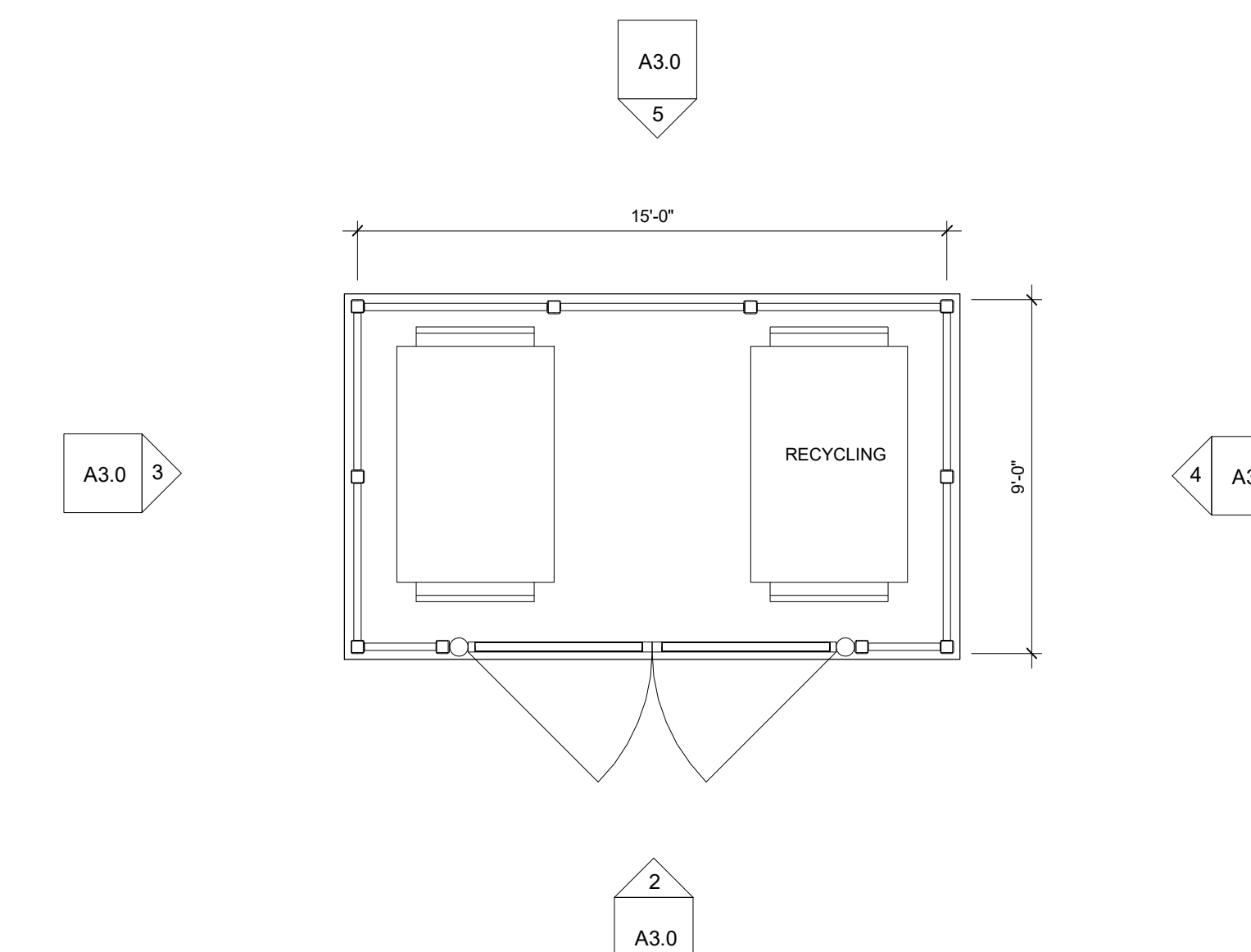
4 TRASH - RIGHT ELEVATION  
1/4" = 1'-0"



3 TRASH - LEFT ELEVATION  
1/4" = 1'-0"



2 TRASH - FRONT ELEVATION  
1/4" = 1'-0"



1 TRASH ENCLOSURE PLAN  
1/4" = 1'-0"

DRAWN BY:  
CHECKED BY:  
ISSUE DATE:  
12/07/2021

REVISIONS:

| NO. | DESCRIPTION |
|-----|-------------|
|     |             |
|     |             |
|     |             |
|     |             |
|     |             |
|     |             |
|     |             |
|     |             |
|     |             |
|     |             |

TRASH/RECYCLING  
& EXTERIOR  
LIGHTING

A3.0

© Copyright 2021  
Godden | Sudik Architects & Planners, Inc.