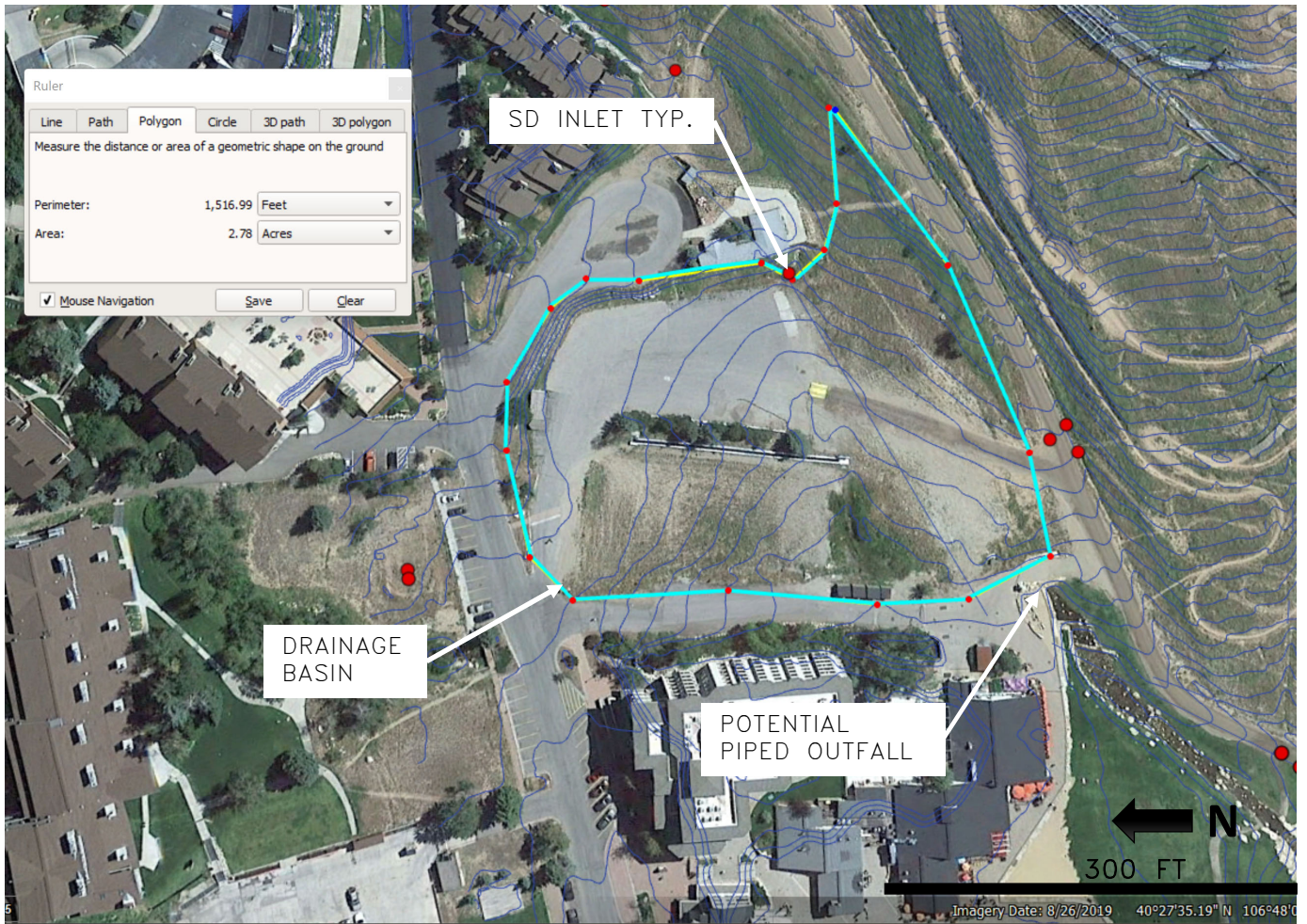


SSRC – TORIAN PLUM DETENTION BASIN, SCOPE APPROVAL



NOTES:

1. TOTAL BASIN AREA = 2.78 AC
2. EX. IMPERVIOUS AREA = 33%
3. AERIAL CURRENT AS OF 8/2019
4. EX. AND FUTURE OUTFALL TO BURGESS CREEK

SSRC – TORIAN PLUM DETENTION BASIN, SCOPE APPROVAL