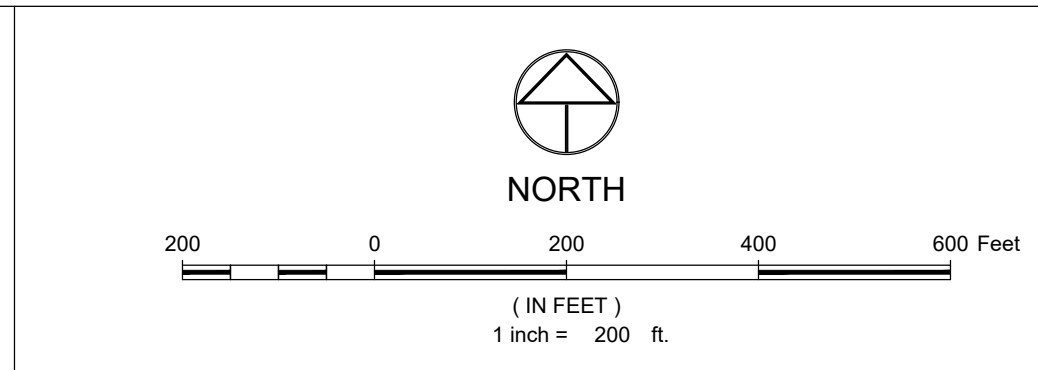
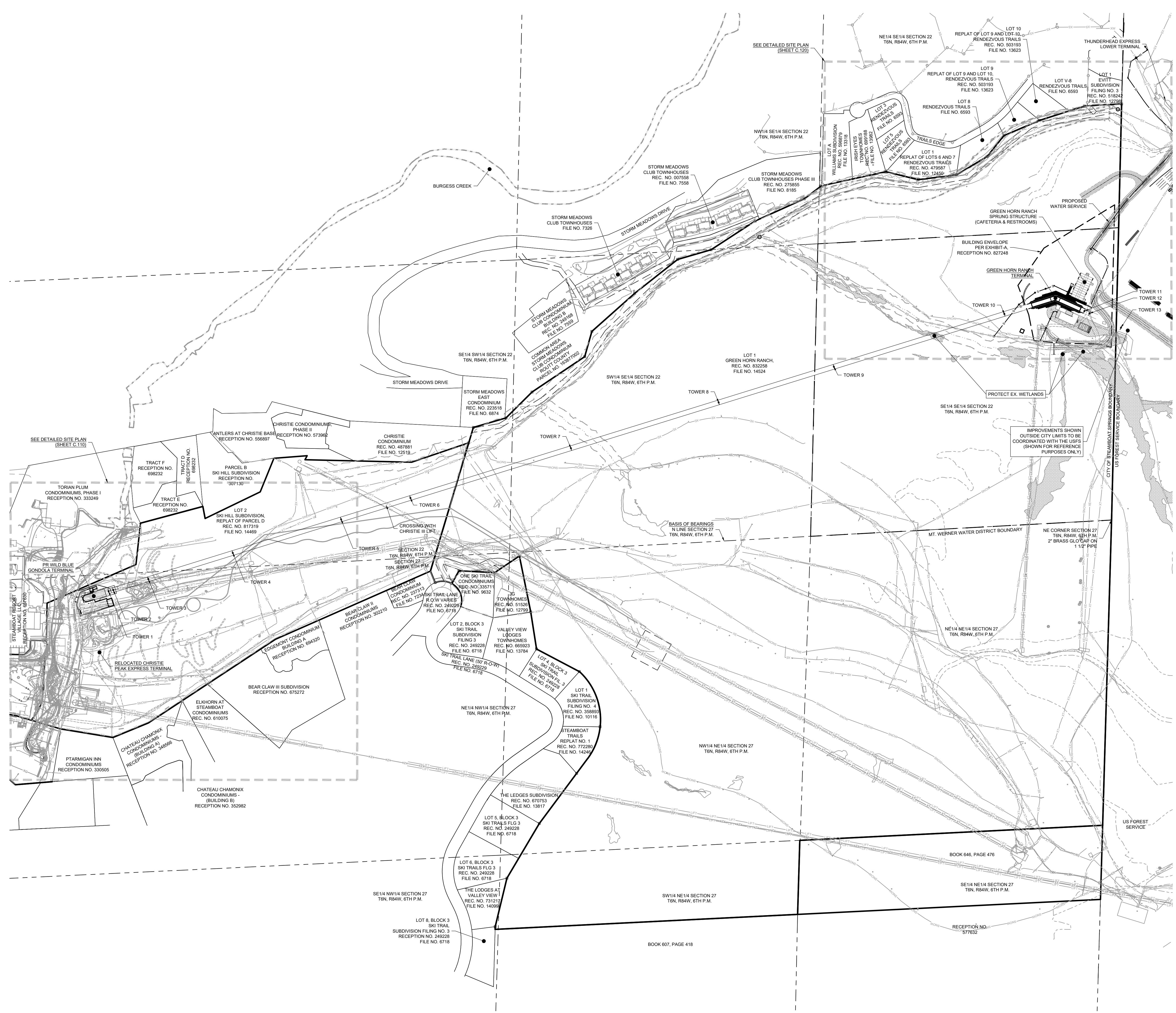


DRAWING FILE NAME: P:\11252020\Projects\Drawings\11252020\11252020-01-C-100-Site Plan - Overall.dwg LAYOUT NAME: C.100 DATE: Dec 10, 2021 2:59PM Dwg Operator: wjk
LIST OF SHEETS: 11252020-01-C-100-Site Plan - Overall.dwg (11252020-01-C-100-Site Plan - Overall.dwg) 11252020-01-C-100-Site Plan - Overall.dwg (11252020-01-C-100-Site Plan - Overall.dwg)



LEGEND:

PROPERTY BOUNDARY	
ADJACENT PROPERTY BOUNDARY	
EASEMENT	
SECTION LINE	
CENTERLINE	
FOUND MONUMENT	
FOUND SECTION CORNER	
BUILDING	
ROOF LINE/OVERHANG	
DECK	
WALL	
FENCE	
PROPOSED MAJOR CONTOUR	
PROPOSED MINOR CONTOUR	
EXISTING MAJOR CONTOUR	
EXISTING MINOR CONTOUR	
ASPHALT	
CONCRETE	
GRAVEL	
SIGN	
PROPOSED SANITARY SEWER W/ MH	
EXISTING SANITARY SEWER W/ MH	
PROPOSED WATER	
PROPOSED GV, FH & CS	
EXISTING WATER	
GAS	
GAS METER AND MANHOLE/VAULT	
CABLE	
CABLE PEDESTAL	
FIBER OPTIC	
TELEPHONE	
TELEPHONE PEDESTAL AND MANHOLE/VAULT	
ELECTRIC	
ELECTRIC PED, JUNCTION BOX AND METER	
LIGHT POLE AND LIGHT POLE W/ MAST	
OVERHEAD ELECTRIC	
UTILITY POLE AND GUY WIRE	
DITCH/SWALE	
EXISTING STORM SEWER W/ FES	
PROPOSED STORM SEWER W/ FES	
INLET AND STORM MANHOLE	
OVERLAND AND CHANNEL FLOW ARROWS	
CONIFEROUS AND DECIDUOUS TREE	

- NOTES:**
- ALL REFERENCES HEREON TO BOOKS, PAGES, FILES, RECEPTION NUMBERS AND FILE NUMBERS ARE TO PUBLIC DOCUMENTS FILED IN THE RECORDS OF ROUTT COUNTY, COLORADO.
 - EASEMENTS AND PUBLIC DOCUMENTS SHOWN OR NOTED HEREON WERE EXAMINED AS TO LOCATION AND PURPOSE AND WERE NOT EXAMINED AS TO RESERVATIONS, RESTRICTIONS, CONDITIONS, OBLIGATIONS, TERMS, OR AS TO THE RIGHT TO GRANT THE SAME.
 - UTILITIES ARE SHOWN PER APPARENT SURFACE EVIDENCE TOGETHER WITH RECORD INFORMATION. IF MORE ACCURATE LOCATIONS OF UNDERGROUND UTILITIES ARE REQUIRED, THE UTILITY WILL HAVE TO BE VERIFIED BY FIELD POTHOLES. LANDMARK CONSULTANTS, INC. AND THE SURVEYOR OF RECORD SHALL NOT BE LIABLE FOR THE LOCATION OF OR THE FAILURE TO NOTE THE LOCATION OF NON-VISIBLE UTILITIES.
 - ANY PERSON WHO KNOWINGLY REMOVES, ALTERS OR DEFACES ANY PUBLIC LAND SURVEY MONUMENT OR LAND MONUMENT OR ACCESSORY, COMITS A CLASS TWO (2) MISDEMEANOR PURSUANT TO STATE STATUTE 18-4-508, C.R.S.
 - THIS SITE CONTAINS A CALCULATED AREA OF 201.9 ACRES.
 - A PORTION OF THE SITE IS LOCATED WITHIN SPECIAL FLOOD HAZARD AREA ZONE A OF THE UNNAMED TRIBUTARY TO BURGESS CREEK AS DETERMINED BY FEMA FLOOD INSURANCE RATE MAP NUMBER 08107C0883D, WITH AN EFFECTIVE DATE OF FEBRUARY 4, 2005 AND LOMR 18-08-0922P.
 - THE MEASURED DISTANCES SHOWN HEREON ARE IN U.S. SURVEY FEET.
 - DOMESTIC WATER & FIRE PROTECTION SYSTEM DESIGNED BY WRIGHT WATER ENGINEERS SHALL BE REVIEWED AND APPROVED BY MOUNT WERNER WATER AND STEAMBOAT SPRINGS FIRE DEPARTMENT.

PROPERTY DESCRIPTION:

- LOT 2, PARCEL D, SKI HILL SUBDIVISION PER FILE #14469 IN ROUTT COUNTY RECORDS AND LOT 1, GREEN HORN RANCH PER FILE #14524 IN ROUTT COUNTY RECORDS, CITY OF STEAMBOAT SPRINGS, ROUTT COUNTY, COLORADO.

CIVIL ENGINEERS | SURVEYORS

141 9th Street -- P.O. Box 774843
Steamboat Springs, Colorado 80477
(970) 871-9494
www.LANDMARK-CD.com

LANDMARK CONSULTANTS, INC.

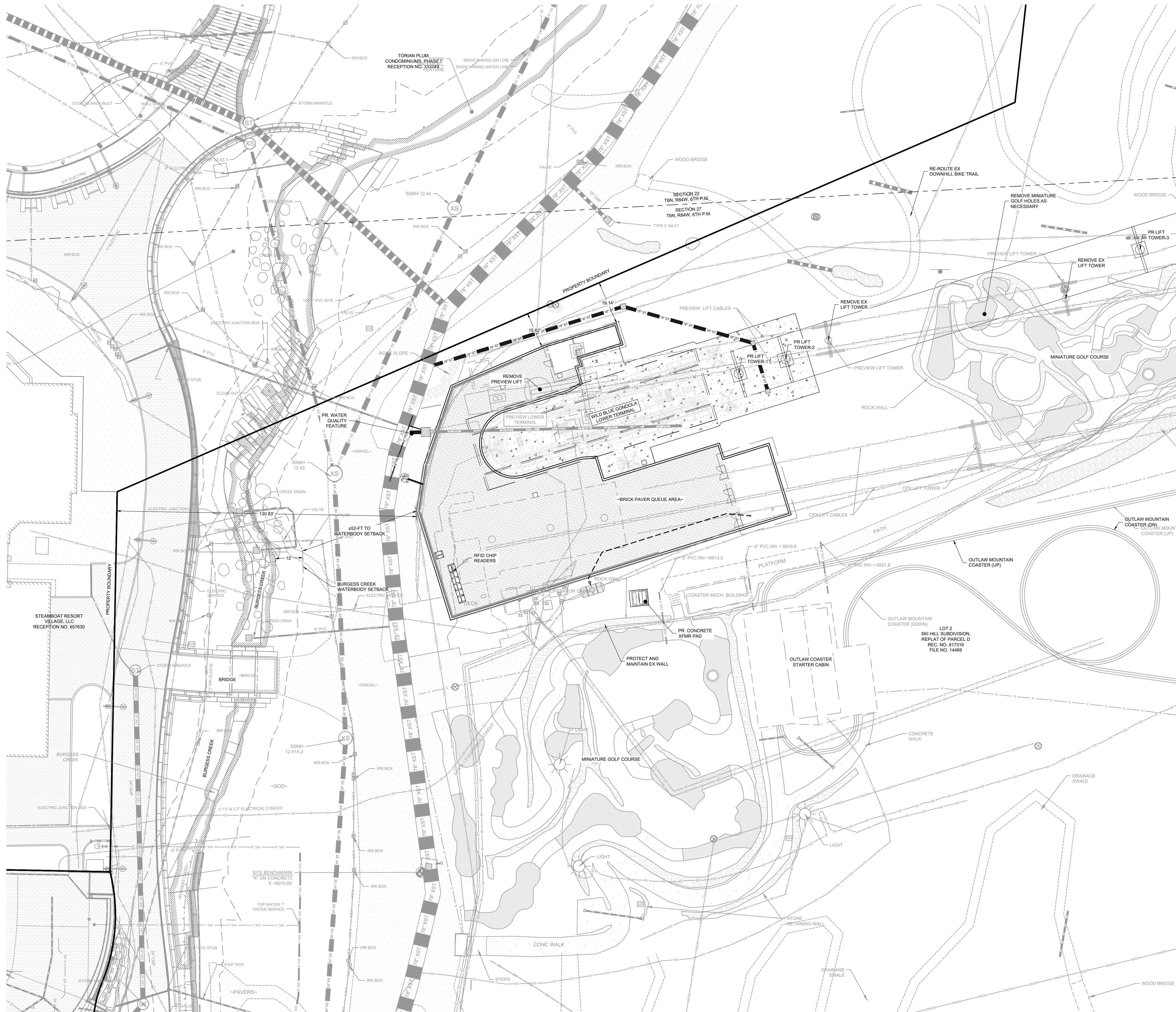
REVIEW SET
NOT FOR CONSTRUCTION
12/10/2021

NO.	DATE:	BY:	DESCRIPTION
1	12-3-21	Grip	Addressed DPT Comments

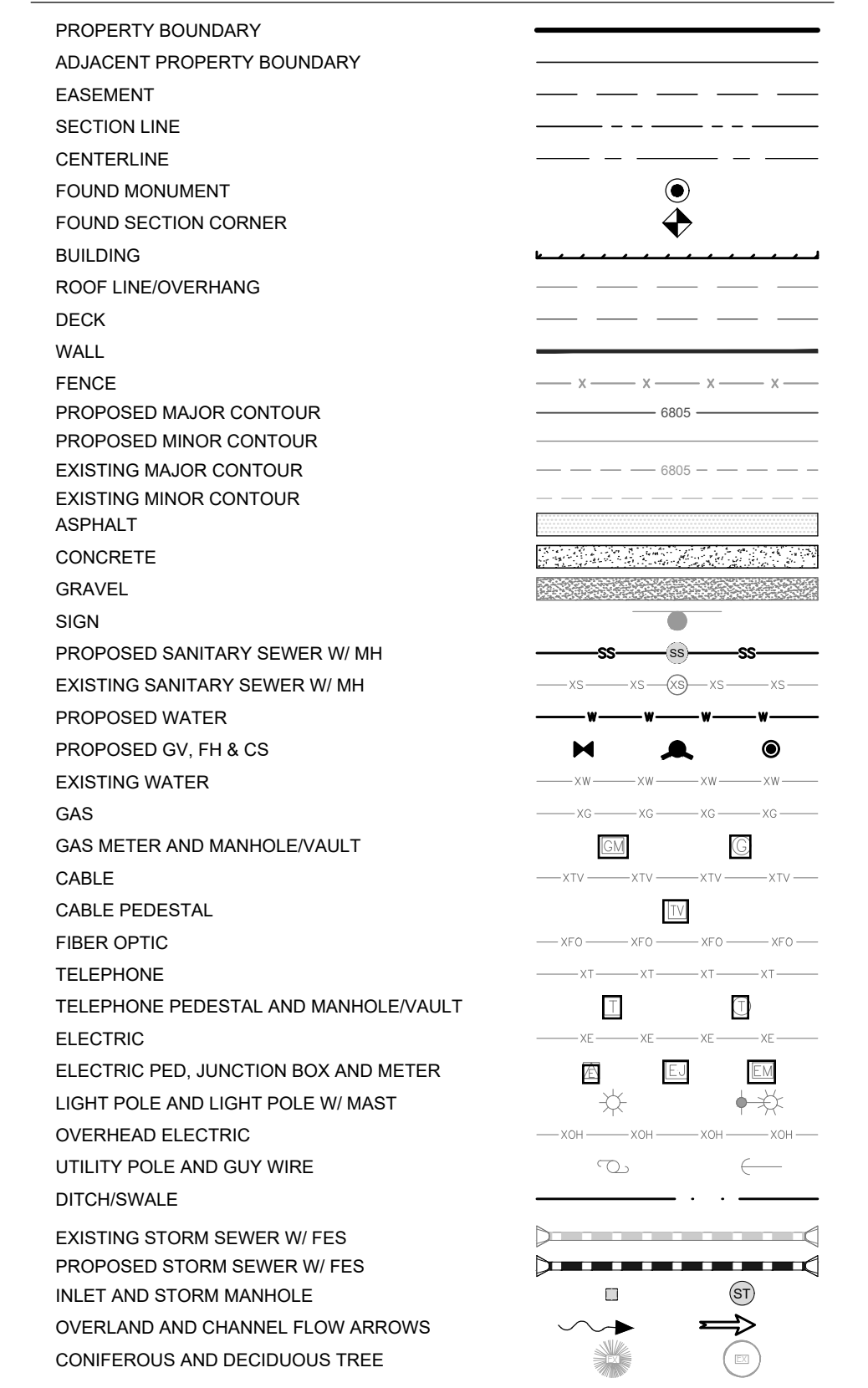
PROJECT: 1012-050
DATE: 9/17/2021
CONTACT: Matt General
EMAIL: mgeneral@landmark-co.com

WILD BLUE GONDOLA
OVERALL SITE PLAN

SHEET
C.100
OF # SHEETS



LEGEND:

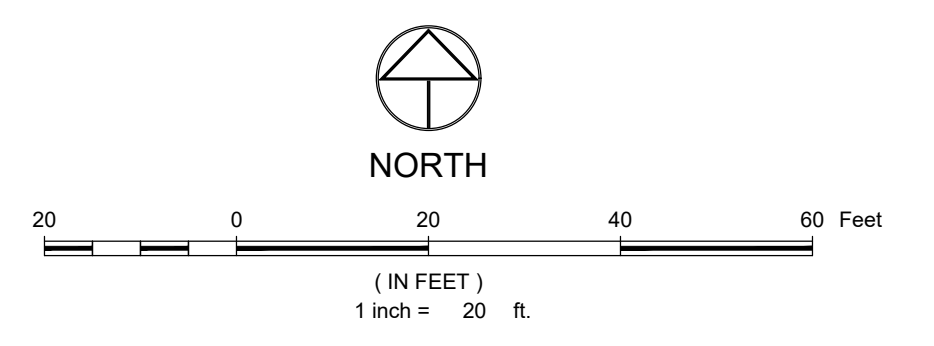


NOTES:

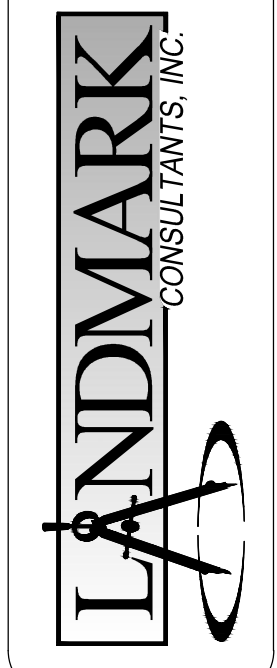
- ALL REFERENCES HEREON TO BOOKS, PAGES, FILES, RECEPTION NUMBERS AND FILE NUMBERS ARE TO PUBLIC DOCUMENTS FILED IN THE RECORDS OF ROUTT COUNTY, COLORADO.
- EASEMENTS AND PUBLIC DOCUMENTS SHOWN OR NOTED HEREON WERE EXAMINED AS TO LOCATION AND PURPOSE AND WERE NOT EXAMINED AS TO RESERVATIONS, RESTRICTIONS, CONDITIONS, OBLIGATIONS, TERMS, OR AS TO THE RIGHT TO GRANT THE SAME.
- UTILITIES ARE SHOWN PER APPARENT SURFACE EVIDENCE TOGETHER WITH RECORD INFORMATION. IF MORE ACCURATE LOCATIONS OF UNDERGROUND UTILITIES ARE REQUIRED, THE UTILITY WILL HAVE TO BE VERIFIED BY FIELD FOTHOLOGS. LANDMARK CONSULTANTS, INC. AND THE SURVEYOR OF RECORD SHALL NOT BE LIABLE FOR THE LOCATION OF OR THE FAILURE TO NOTE THE LOCATION OF NON-VISIBLE UTILITIES.
- ANY PERSON WHO KNOWINGLY REMOVES, ALTERS OR DEFACTS ANY PUBLIC LAND SURVEY MONUMENT OR LAND MONUMENT OR ACCESSORY, COMITS A CLASS TWO (2) MISDEMEANOR PURSUANT TO STATE STATUTE 18-4-508, C.R.S.
- THIS SITE CONTAINS A CALCULATED AREA OF 201.9 ACRES.
- A PORTION OF THE SITE IS LOCATED WITHIN SPECIAL FLOOD HAZARD AREA ZONE A OF THE UNNAMED TRIBUTARY TO BURGESS CREEK AS DETERMINED BY FEMA FLOOD INSURANCE RATE MAP NUMBER 08107C08830, WITH AN EFFECTIVE DATE OF FEBRUARY 4, 2005 AND LOMR 18-08-0922P.
- THE MEASURED DISTANCES SHOWN HEREON ARE IN U.S. SURVEY FEET.
- DOMESTIC WATER & FIRE PROTECTION SYSTEM DESIGNED BY WRIGHT WATER ENGINEERS SHALL BE REVIEWED AND APPROVED BY MOUNT WERNER WATER AND STEAMBOAT SPRINGS FIRE DEPARTMENT.

PROPERTY DESCRIPTION:

- LOT 2, PARCEL D, SKI HILL SUBDIVISION PER FILE #14469 IN ROUTT COUNTY RECORDS AND LOT 1, GREEN HORN RANCH PER FILE #14524 IN ROUTT COUNTY RECORDS, CITY OF STEAMBOAT SPRINGS, ROUTT COUNTY, COLORADO.



CIVIL ENGINEERS | SURVEYORS
 141 9th Street - P.O. Box 74843
 Steamboat Springs, Colorado 80477
 (970) 871-9494
 www.LANDMARK-CD.com



PLEASE PRINT ALL FIGURES, REVISIONS AND SERVICE CHANGES. LANDMARK CONSULTANTS, INC. AND ITS SURVEYORS AND ENGINEERS ARE NOT RESPONSIBLE FOR THE CONSTRUCTION OR CONTRACTING OF ANY PROJECT UNLESS SIGNED AND SEALED BY A LICENSED PROFESSIONAL ENGINEER OR SURVEYOR EMPLOYED BY LANDMARK CONSULTANTS, INC.

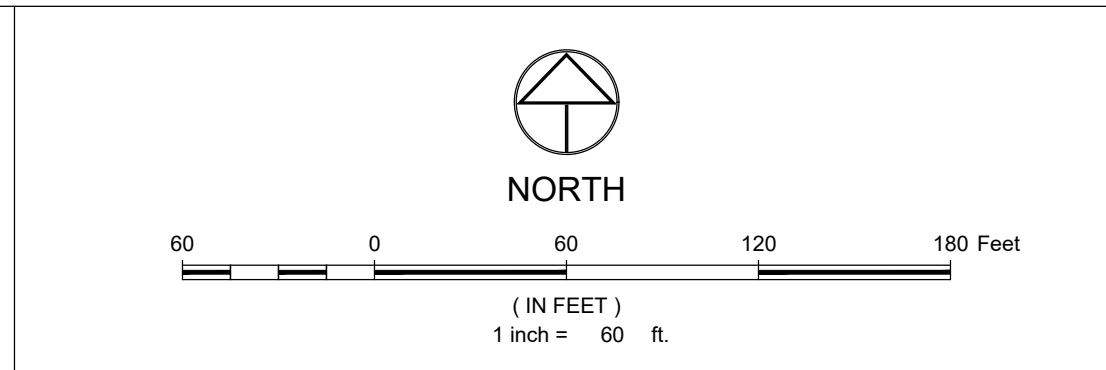
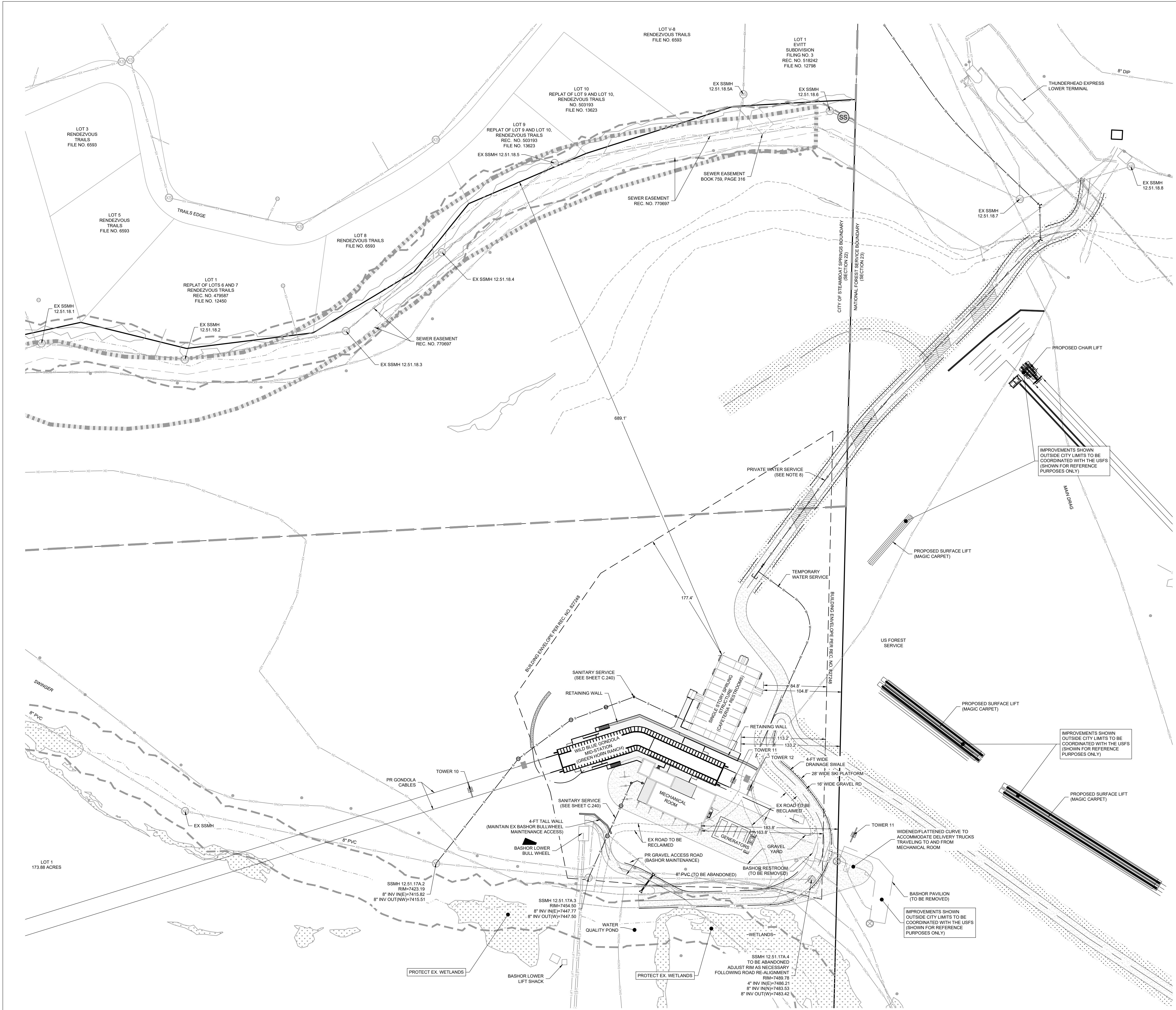
DESCRIPTION: WILD BLUE GONDOLA LOWER TERMINAL
 PROJECT: 1012-560
 DATE: 12-3-21
 BY: [Signature]
 CHECKED: [Signature]
 DATE: 9/17/2021
 CONTACT: Matt General
 EMAIL: mgeneral@landmark-consultants.com

REVIEW SET
NOT FOR CONSTRUCTION
 12/3/2021

WILD BLUE GONDOLA
DETAILED SITE PLAN
Lower Terminal

SHEET
C.110
 OF # SHEETS

DRAWING FILENAME: P:\1212020\DWG\Projects\1012-560\SP-C-110-Details\Site Plan\Lower Terminal.dwg, PLOT DATE: 12/3/2021, 2:50 PM, CAD OPERATOR: [Name]
 LIST OF SHEETS: 1012-560-000\1012-560-000.dwg, 1012-560-001\1012-560-001.dwg, 1012-560-002\1012-560-002.dwg, 1012-560-003\1012-560-003.dwg, 1012-560-004\1012-560-004.dwg, 1012-560-005\1012-560-005.dwg



LEGEND:

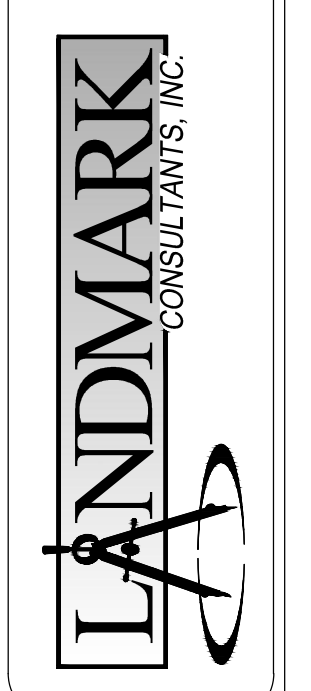
PROPERTY BOUNDARY	---
ADJACENT PROPERTY BOUNDARY	---
EASEMENT	---
SECTION LINE	---
CENTERLINE	---
FOUND MONUMENT	⊙
FOUND SECTION CORNER	⊙
BUILDING	▭
ROOF LINE/OVERHANG	▭
DECK	▭
WALL	▭
FENCE	---
PROPOSED MAJOR CONTOUR	---
PROPOSED MINOR CONTOUR	---
EXISTING MAJOR CONTOUR	---
EXISTING MINOR CONTOUR	---
ASPHALT	▨
CONCRETE	▨
GRAVEL	▨
SIGN	⊙
PROPOSED SANITARY SEWER W/ MH	SS
EXISTING SANITARY SEWER W/ MH	SS
PROPOSED WATER	W
PROPOSED GV, FH & CS	W
EXISTING WATER	W
GAS	W
GAS METER AND MANHOLE/VAULT	W
CABLE	W
CABLE PEDESTAL	W
FIBER OPTIC	W
TELEPHONE	W
TELEPHONE PEDESTAL AND MANHOLE/VAULT	W
ELECTRIC	W
ELECTRIC PED, JUNCTION BOX AND METER	W
LIGHT POLE AND LIGHT POLE W/ MAST	W
OVERHEAD ELECTRIC	W
UTILITY POLE AND GUY WIRE	W
DITCH/SWALE	W
EXISTING STORM SEWER W/ FES	SS
PROPOSED STORM SEWER W/ FES	SS
INLET AND STORM MANHOLE	SS
OVERLAND AND CHANNEL FLOW ARROWS	→
CONIFEROUS AND DECIDUOUS TREE	⊙

- NOTES:**
- ALL REFERENCES HEREON TO BOOKS, PAGES, FILES, RECEPTION NUMBERS AND FILE NUMBERS ARE TO PUBLIC DOCUMENTS FILED IN THE RECORDS OF ROUTT COUNTY, COLORADO.
 - EASEMENTS AND PUBLIC DOCUMENTS SHOWN OR NOTED HEREON WERE EXAMINED AS TO LOCATION AND PURPOSE AND WERE NOT EXAMINED AS TO RESERVATIONS, RESTRICTIONS, CONDITIONS, OBLIGATIONS, TERMS, OR AS TO THE RIGHT TO GRANT THE SAME.
 - UTILITIES ARE SHOWN PER APPARENT SURFACE EVIDENCE TOGETHER WITH RECORD INFORMATION. IF MORE ACCURATE LOCATIONS OF UNDERGROUND UTILITIES ARE REQUIRED, THE UTILITY WILL HAVE TO BE VERIFIED BY FIELD POT-HOLING. LANDMARK CONSULTANTS, INC. AND THE SURVEYOR OF RECORD SHALL NOT BE LIABLE FOR THE LOCATION OF OR THE FAILURE TO NOTE THE LOCATION OF NON-VISIBLE UTILITIES.
 - ANY PERSON WHO KNOWINGLY REMOVES, ALTERS OR DEFACTS ANY PUBLIC LAND SURVEY MONUMENT OR LAND MONUMENT OR ACCESSORY, COMMITS A CLASS TWO (2) MISDEMEANOR PURSUANT TO STATE STATUTE 18-4-508, C.R.S.
 - THIS SITE CONTAINS A CALCULATED AREA OF 201.9 ACRES.
 - A PORTION OF THE SITE IS LOCATED WITHIN SPECIAL FLOOD HAZARD AREA ZONE A OF THE UNNAMED TRIBUTARY TO BURGESS CREEK AS DETERMINED BY FEMA FLOOD INSURANCE RATE MAP NUMBER 08107C0893D, WITH AN EFFECTIVE DATE OF FEBRUARY 4, 2005 AND LOMR 18-08-0922P.
 - THE MEASURED DISTANCES SHOWN HEREON ARE IN U.S. SURVEY FEET.
 - DOMESTIC WATER & FIRE PROTECTION SYSTEM DESIGNED BY WRIGHT WATER ENGINEERS SHALL BE REVIEWED AND APPROVED BY MOUNT WERNER WATER AND STEAMBOAT SPRINGS FIRE DEPARTMENT.

PROPERTY DESCRIPTION:

- LOT 2, PARCEL D, SKI HILL SUBDIVISION PER FILE #14469 IN ROUTT COUNTY RECORDS AND LOT 1, GREEN HORN RANCH PER FILE #14524 IN ROUTT COUNTY RECORDS, CITY OF STEAMBOAT SPRINGS, ROUTT COUNTY, COLORADO.

CIVIL ENGINEERS | SURVEYORS
 141 9th Street - P.O. Box 74843
 Steamboat Springs, Colorado 80477
 (970) 871-9494
 www.LANDMARK-CD.com



THIS SET OF PLANS, SPECIFICATIONS, CONTRACTS AND AGREEMENTS IS THE PROPERTY OF LANDMARK CONSULTANTS, INC. AND IS NOT TO BE REPRODUCED, COPIED, OR TRANSMITTED IN ANY FORM OR BY ANY MEANS, ELECTRONIC OR MECHANICAL, WITHOUT THE WRITTEN PERMISSION OF LANDMARK CONSULTANTS, INC.

REVIEW SET
 NOT FOR CONSTRUCTION
 12/29/2021

PROJECT:	1012-050
DATE:	9/17/2021
CONTACT:	Matt General
EMAIL:	mgeneral@landmark-co.com

**WILD BLUE GONDOLA
 DETAILED SITE PLAN
 (GREEN HORN RANCH)**