

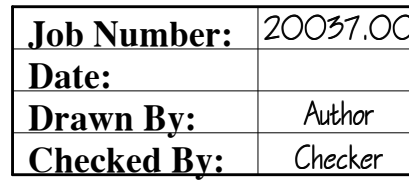
NOTICE: DUTY OF COOPERATION

Release of these plans contemplates further cooperation among the owner, his contractor and the architect. Design and construction are complex. Although the architect is responsible for the design, he performed their services with due care and diligence, they cannot guarantee perfection. Communication is essential and every contingency cannot be anticipated. Any written or misinterpreted statement or action of these plans shall be reported immediately to the architect. Failure to notify the architect compounds the problem and increases the risk of a claim. A failure to cooperate by a simple notice to the architect shall relieve the architect from responsibility for the consequences. Changes made from the plans without consulting the architect shall be at the owner's risk. Failure to notify the architect shall relieve the architect of responsibility for all consequences arising out of such changes.

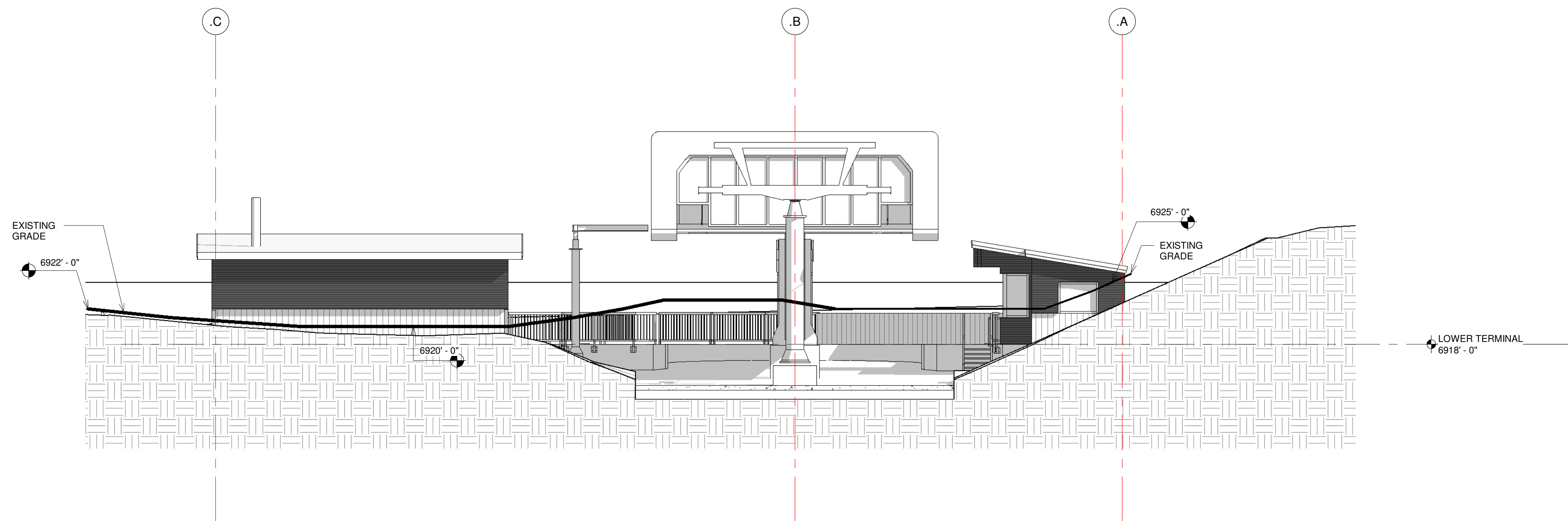
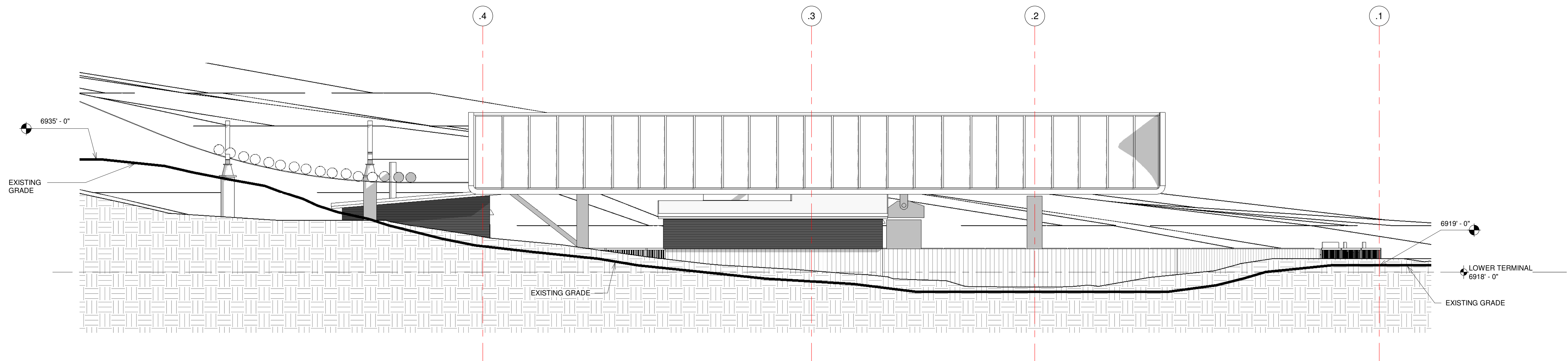
All design, documents and data prepared by Eric Smith Associates, P.C. as instruments of service shall remain property of Eric Smith Associates, P.C. and shall not be copied, changed or disclosed in any form without the written consent or signature of any member of Eric Smith Associates, P.C.

Eric Smith Associates, P.C.

SSRC WILD BLUE GONDOLA
LOWER TERMINAL & MID-STATION
STEAMBOAT SPRINGS, CO



Project Phase
PLANNING SUBMITTAL
Sheet Title
LOWER TERMINAL SITE PLAN
Sheet Number
DPL-2.1



NOTICE: DUTY OF COOPERATION

Release of these plans contemplates further cooperation by the owner and the architect. Design and construction are complex. Although the architect and his consultants have performed their services with due care and diligence, they cannot guarantee perfection. Communication is imperfect and every contingency cannot be anticipated. Any architect's obligation to the owner is not the use of these plans shall be reported immediately to the architect. Failure to notify the architect compounds misunderstanding and increases construction costs. A failure to cooperate by a simple notice to the architect shall not constitute a breach of contract or any consequences. Changes made from the plans without consent of the architect are unauthorized and shall relieve the architect of responsibility for all consequences arising out of such changes.

All design, documents and data prepared by Eric Smith Associates, P.C. as instruments of service shall remain property of Eric Smith Associates, P.C. and shall not be copied, changed or disclosed in any form whatsoever without first obtaining the express written consent of Eric Smith Associates, P.C.

[illegible]

SSRC WILD BLUE GONDOLA
LOWER TERMINAL & MID-STATION
STEAMBOAT SPRINGS, CO



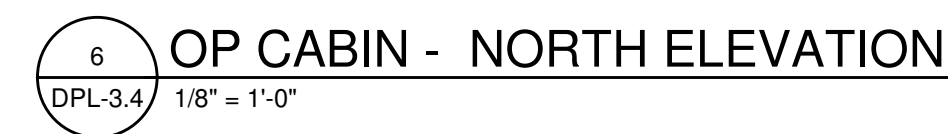
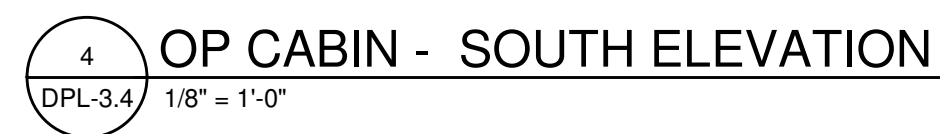
Job Number:	20037.00
Date:	
Drawn By:	Author
Checked By:	Checker

Project Phase
PLANNING SUBMITTAL
Sheet Title
LOWER TERMINAL ELEVATIONS
Sheet Number

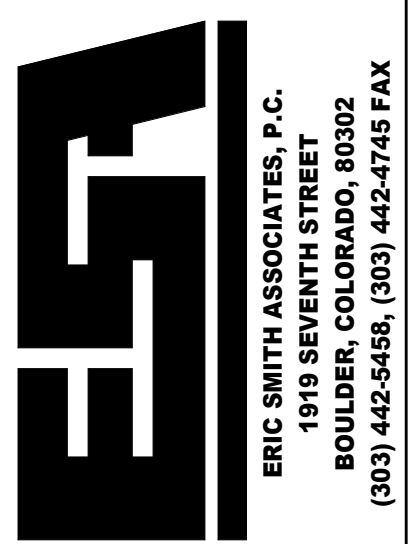
DPL-3.2



DEVELOPMENT PLAN SUBMITTAL 9/17/2021

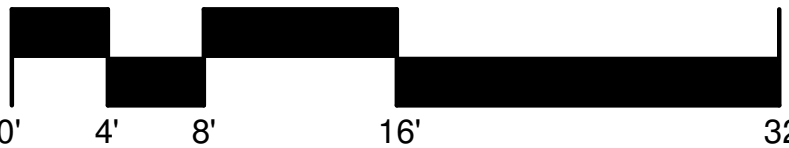
[illegible]

SSRC WILD BLUE GONDOLA
LOWER TERMINAL & MID-STATION
STEAMBOAT SPRINGS, CO



Job Number:	20037.00
Date:	
Drawn By:	Author
Checked By:	Checker

Project Phase
PLANNING SUBMITTAL
Sheet Title
LOWER TERMINAL ELEVATIONS (COLOR)
Sheet Number
DPL-3.4



DEVELOPMENT PLAN SUBMITTAL 9/17/2021

NOTICE: DUE TO COOPERATION

Release of these plans contemplates further cooperation among the owner, his contractor and the architect. Design and construction are complex tasks. The architect is not a guarantor. He cannot perform these services with due care and diligence, they cannot guarantee perfect. Communication is imperative. The architect is not a guarantor. Any ambiguity or discrepancy discovered by the use of these plans shall be reported immediately to the architect. If the contractor fails to respond, misunderstanding and increases construction costs. A failure to cooperate by a simple notice to the architect shall relieve the architect from responsibility for the consequences of any such failure. Any use without consent of the architect are unauthorized and shall relieve the architect of responsibility for all consequences arising out of such changes.

All design, documents and data prepared by Eric Smith Associates, P.C. as instruments of service shall be the property of Eric Smith Associates, P.C. and shall not be copied, changed or disclosed in any form and without written first obtaining the express written consent of Eric Smith Associates, P.C.

Eric Smith Associates, P.C.

[illegible]

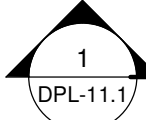
SSRC WILD BLUE GONDOLA
LOWER TERMINAL & MID-STATION
STEAMBOAT SPRINGS, CO

ESF

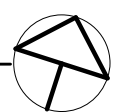
ERIC SMITH ASSOCIATES, P.C.
1919 SEVENTH STREET
BOULDER, COLORADO, 80302
(303) 442-5458. (303) 442-4745 FAX

Job Number:	20037.00
Date:	
Drawn By:	Author
Checked By:	Checker

Project Phase
PLANNING SUBMITTAL
Sheet Title
LOWER TERMINAL FIRST LEVEL
Sheet Number
DPL-10.1



1
DPL-



SSRC WILD BLUE GONDOLA
LOWER TERMINAL & MID-STATION
STEAMBOAT SPRINGS, CO

ERIC SMITH ASSOCIATES, P.C.
4040 CRENSHAW, CLEVELAND, OH 44103

Job Number:	20037.00
--------------------	----------

Project Phase	
Phase 1: Initial Assessment	Phase 2: Data Collection
Phase 3: Analysis	Phase 4: Reporting

Sheet Title

Sheet Number

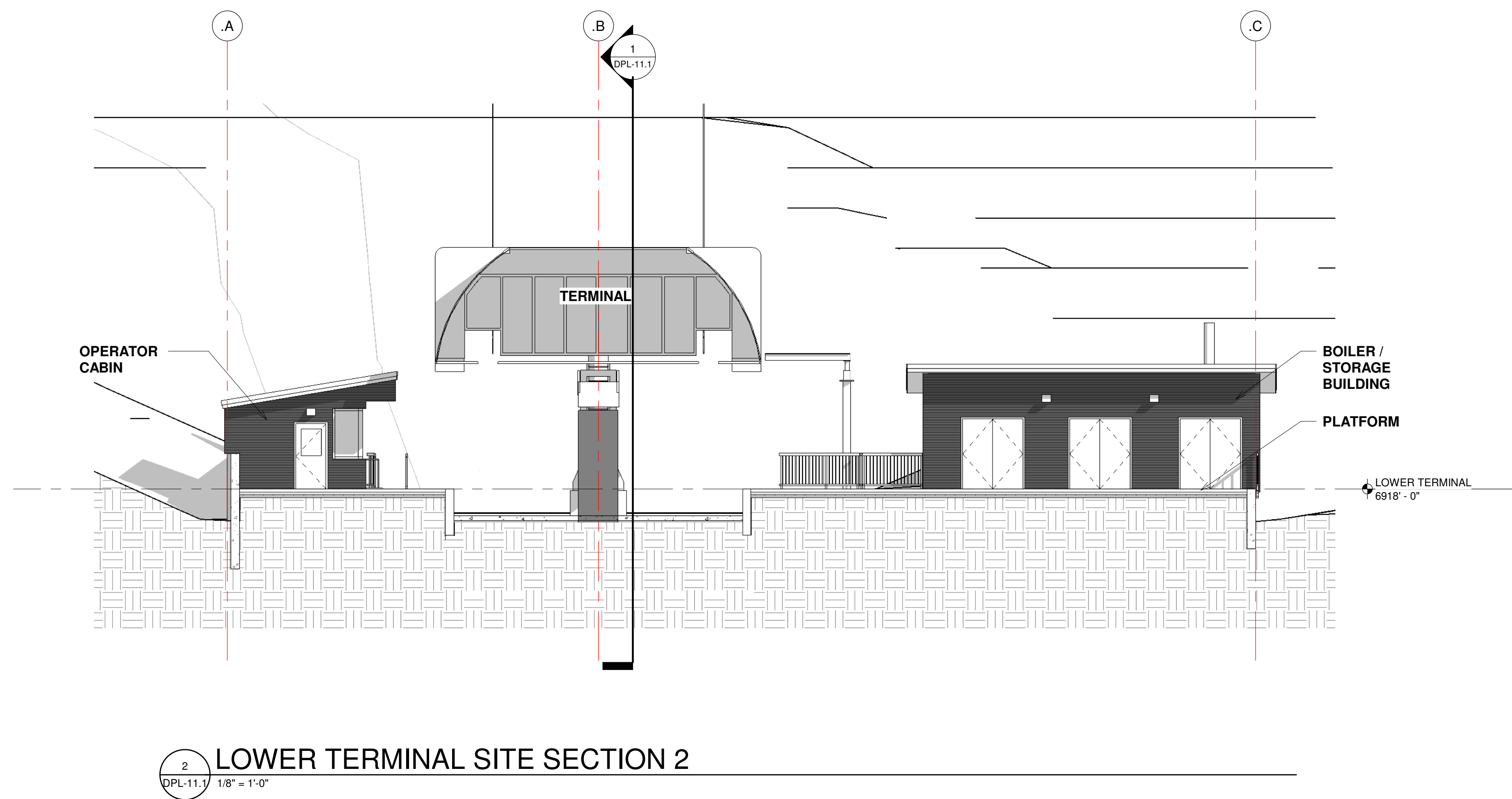
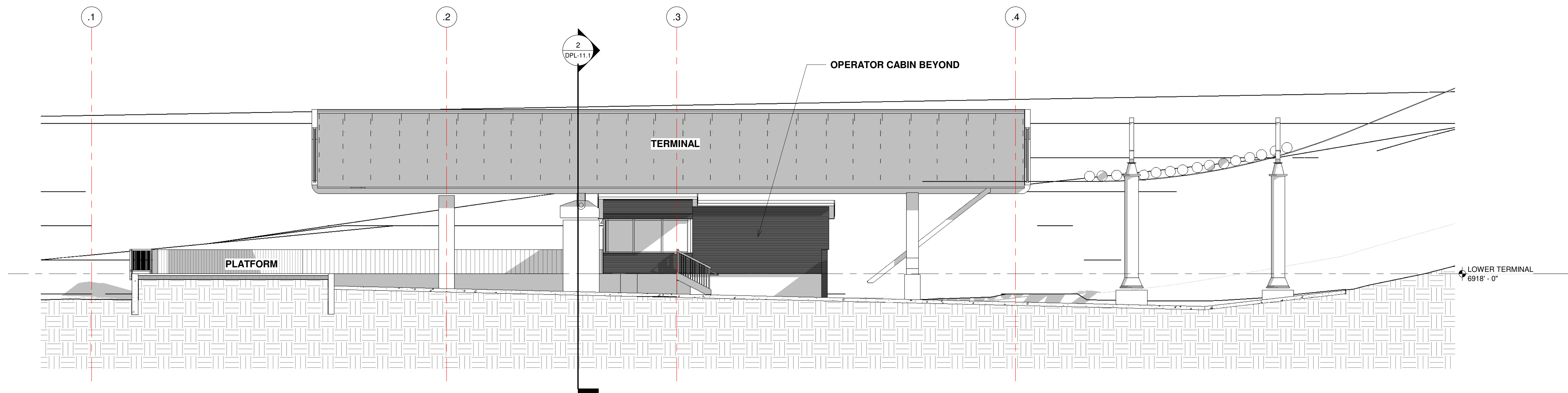
DPL-10.2

NOTICE: DUTY OF COOPERATION

Release of these plans contemplates further cooperation among the owner, his contractor and the architect. Design and construction are complex. Although the architect and his consultants have performed their services with due care and diligence, they cannot guarantee perfection. Communication is imperfect and every contingency cannot be anticipated. Any error or discrepancy discovered by the use of these plans shall be reported immediately to the architect. Failure to notify the architect compounds misunderstanding and increases construction costs. A failure to cooperate by a simple notice to the architect shall relieve the architect from responsibility for the consequences. Changes to the plans shall be made without consent of the architect are unauthorized and shall relieve the architect of responsibility for all consequences arising out of such changes.

REVISIONS

[illegible]



NOTICE: DUTY OF COOPERATION

Release of these plans contemplates further cooperation among the owner, his contractor and the architect. Design and construction are complex. Although the architect and his consultants have performed their services with due care and diligence, they cannot guarantee perfection. Communication is imperfect and every contingency cannot be anticipated. Any ambiguity or discrepancy discovered by the use of these plans shall be reported immediately to the architect. Failure to report such discrepancies and/or misunderstanding and increases construction costs. A failure to cooperate by a simple notice to the architect shall relieve the architect from responsibility for the consequences. Changes made from the plans without consent of the architect are unauthorized and shall relieve the architect of responsibility for all consequences arising out of such changes.

All design, documents and data prepared by Eric Smith Associates, P.C. as instruments of service shall remain property of Eric Smith Associates, P.C. and shall not be copied, changed or disclosed in any form whatsoever without first obtaining the express written consent of Eric Smith Associates, P.C.

Eric Smith Associates, P.C.

REVISIONS

[illegible]

SSRC WILD BLUE GONDOLA
LOWER TERMINAL & MID-STATION
STEAMBOAT SPRINGS, CO



Job Number:	20037.00
--------------------	----------

Date:	
--------------	--

Drawn By:	Author
	Client

Checked By:	Checker
-------------	---------

Project Phase
PLANNING SUBMITTAL

Sheet Title

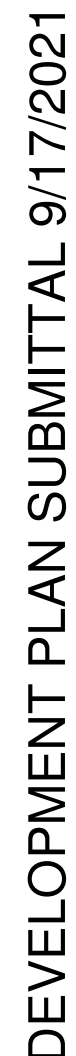
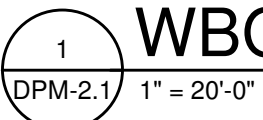
LOWER TERMINAL SITE
SECTIONS

Sheet Number

DPL-11.1

PROJECT SUMMARY TABLE - WBG MID-STATION TERMINAL			
GROSS FLOOR AREA	MAINT BLDG = 7540 SF, SPRUNG = 7015 SF		
UNIT SIZE (GROSS)	NA		
NUMBER OF UNITS	NA		
ZONING (EXIST & PROPOSED)	OR - OPEN SPACE AND RECREATION		
FRONTAGE			
USE BREAKDOWN	DESCRIPTION	SQUARE FOOTAGE	# OF UNITS
PRINCIPAL USE	AMUSEMENT, OUTDOOR SKI AREA	14,555 SF	NA
ACCESSORY USE			
STANDARDS	ZONE DISTRICT REQUIREMENTS	PROPOSED	VARIANCE? (YES/NO)
LOT AREA	2,500 SF MIN. NO MAX	173.88 ACRES	NO
LOT COVERAGE	NO MAX		
FLOOR AREA RATIO	NO MAX		
OVERALL BUILDING HEIGHT	34' MAX.	MAINT = 38'-0" SPRUNG = 30'-0"	YES NO
AVERAGE PLATE HEIGHT	22' MAX.	MAINT = 28'-0" SPRUNG = NA	YES NO
FRONT SETBACK			
PRINCIPAL ACCESSORY	25' MIN 25' MIN		NO NO
SIDE SETBACK			
PRINCIPAL ACCESSORY	25' MIN 15' MIN		NO NO
REAR SETBACK			
PRINCIPAL ACCESSORY	20' MIN 15' MIN		NO NO

IT IS NOT ANTICIPATED THAT THERE WILL BE AN EXTENSIVE QUEUE FOR THE UPLOADING OR DOWNLOADING OF THE WILD BLUE GONDOLA AT THE MID-STATION. IF NEEDED, UPHILL QUEUING WILL BE STAGED ADJACENT TO THE SPRUNG PLATFORM (GREEN BOX). THE DOWNHILL QUEUE WILL BE STAGED ALONG THE STAIRS AND CATWALK BELOW THE TERMINAL (HIGHLIGHTED IN BLUE). IF NECESSARY, ADDITIONAL DOWNLOAD QUEUING WILL BE PROVIDED ON THE SNOW NORTH OF THE MID-STATION PLATFORM.

[illegible]

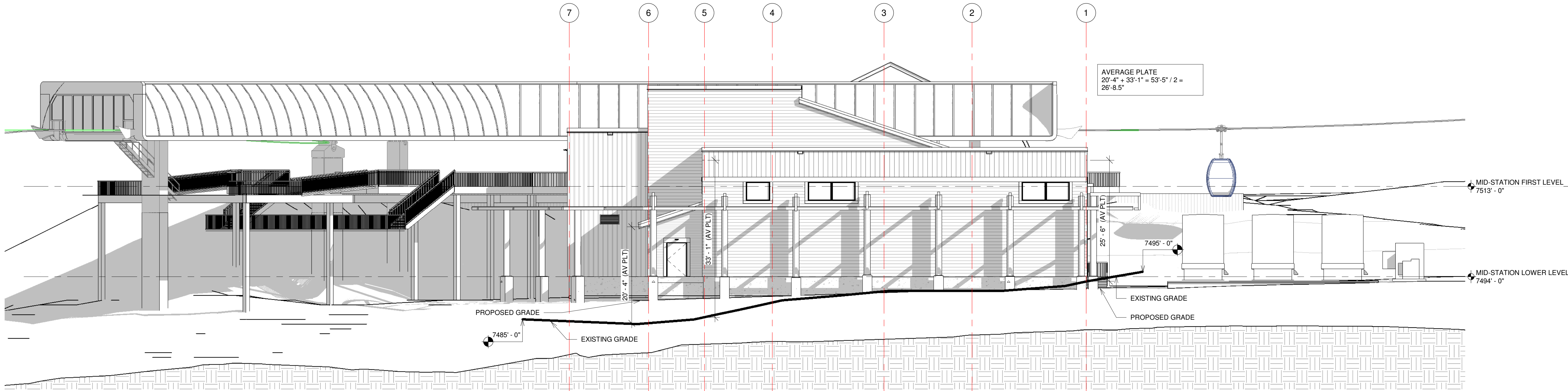
ERIC SMITH ASSOCIATES, P.C.
1919 SEVENTH STREET
BOULDER, COLORADO, 80302
(303) 442-5459, (303) 442-4745 FAX

Project Phase
PLANNING SUBMITTAL

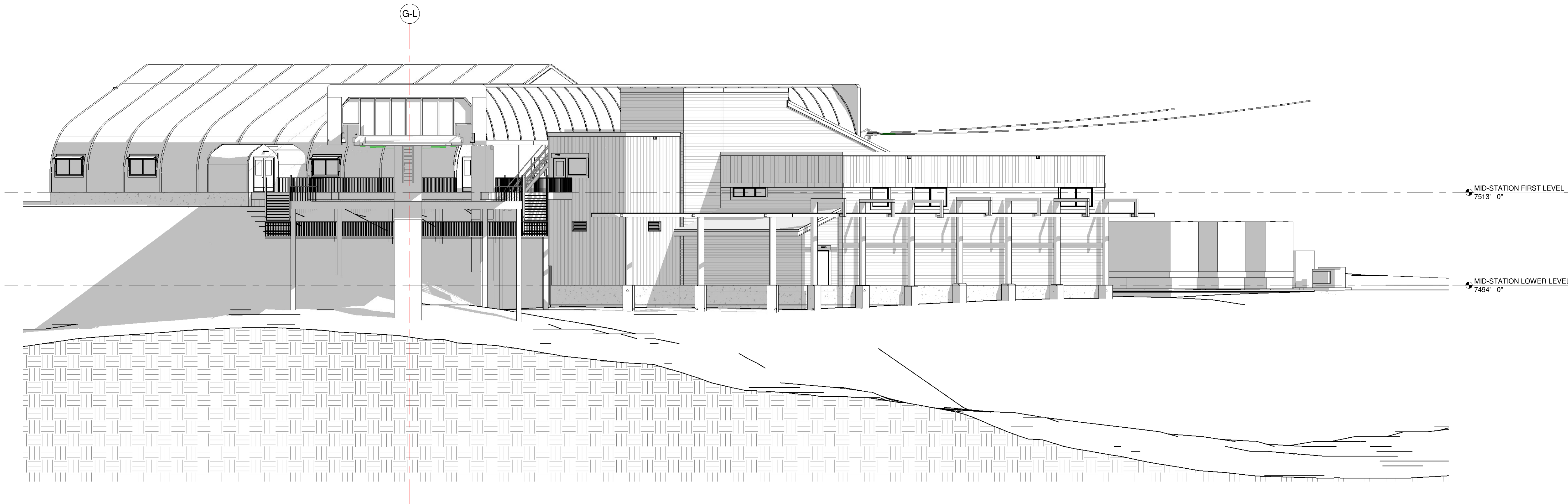
Sheet Title
MID-STATION SITE PLAN

Sheet Number

DPM-2.1



1 WBG MID-STATION - SOUTH ELEVATION
DPM-3.1 3/32" = 1'-0"



2 WBG MID-STATION - WEST ELEVATION
DPM-3.1 3/32" = 1'-0"



NOTICE OF COOPERATION
Release of these plans contemplates further cooperation among the owner, the contractor and the architect. Design and construction are complex. Although the architect and his consultants have performed their services with due care and diligence, they cannot guarantee perfection. Communication is important and every contingency cannot be anticipated. Any ambiguity or discrepancy discovered by the use of these plans shall be reported immediately to the architect. Failure to notify the architect compounds misunderstanding and increases construction costs. A failure to cooperate by a simple notice to the architect shall relieve the architect from responsibility for the consequences. Changes made from the plans without consent of the architect are unauthorized and shall relieve the architect of responsibility for all consequences arising out of such changes.

All design, documents and data prepared by Eric Smith Associates, P.C. as instruments of service, shall remain property of Eric Smith Associates, P.C. and shall not be copied, changed or disclosed in any form whatsoever without first obtaining the express written consent of Eric Smith Associates, P.C.
Eric Smith Associates, P.C.

REVISIONS		
No.	Description	Date

SSRC WILD BLUE GONDOLA
LOWER TERMINAL & MID-STATION
STEAMBOAT SPRINGS, CO



Job Number: 20057.00
Date:
Drawn By: Author
Checked By: Checker

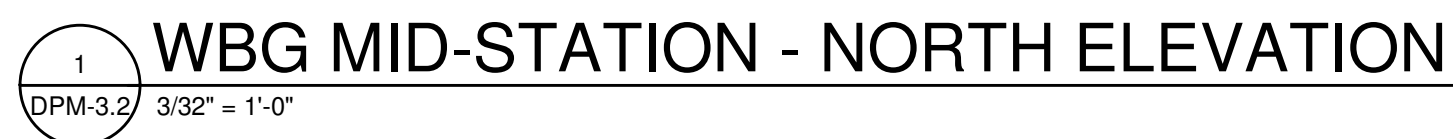
Project Phase
PLANNING SUBMITTAL

Sheet Title
MID-STATION ELEVATIONS

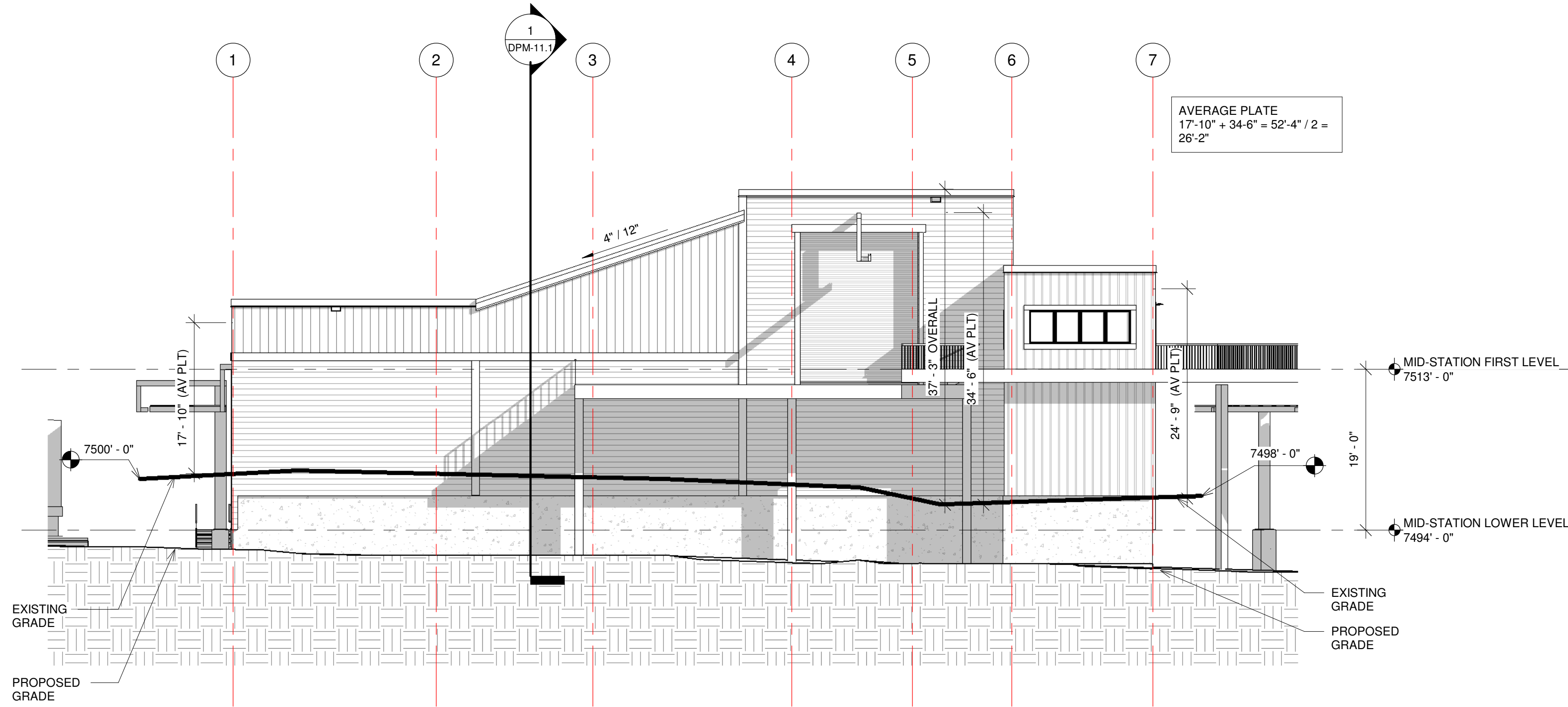
Sheet Number

DPM-3.1

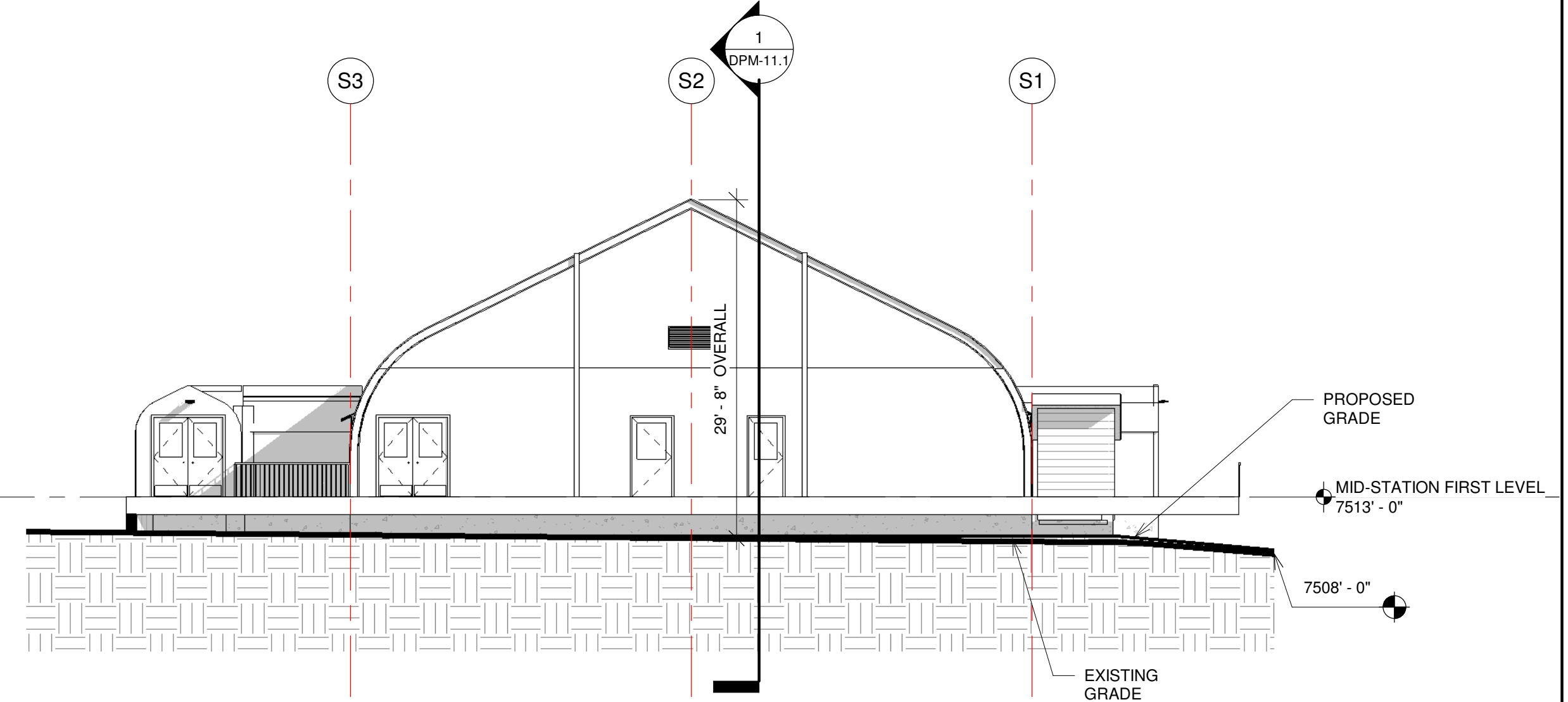
DEVELOPMENT PLAN SUBMITTAL 9/17/2021



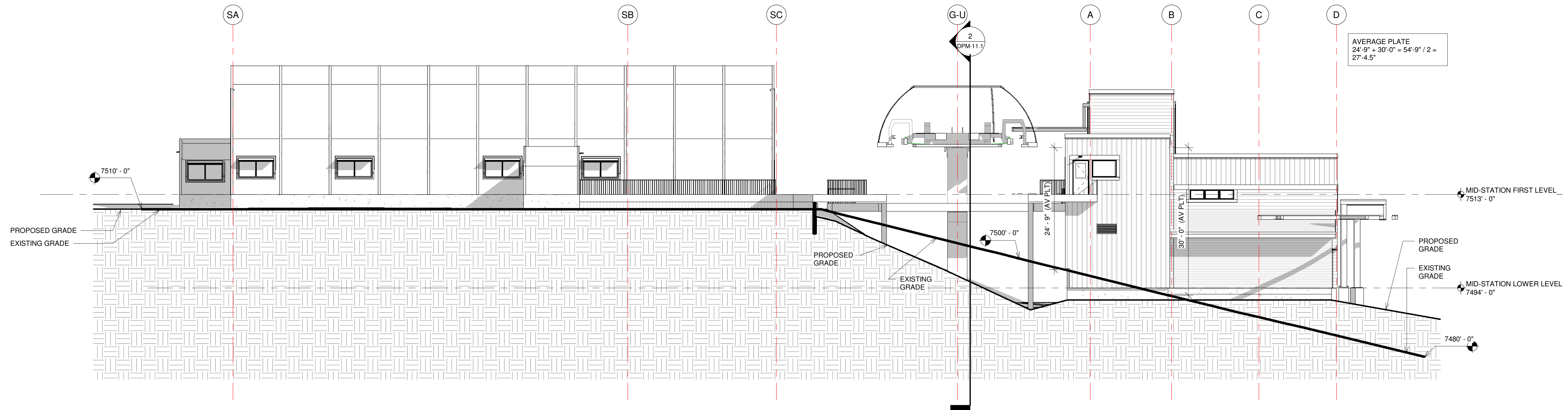
Job Number:	20037.00
Date:	
Drawn By:	Author
Checked By:	Checker
Project Phase	
PLANNING SUBMITTAL	
Sheet Title	
MID-STATION ELEVATIONS	
Sheet Number	
DPM-3.2	



1 WBG MAINTENANCE - NORTH ELEVATION
DPM-3.3 3/32" = 1'-0"



2 WBG SPRUNG - SOUTH ELEVATION
DPM-3.3 3/32" = 1'-0"



3 WBG MAINTENANCE AND SPRUNG - WEST ELEVATION
DPM-3.3 3/32" = 1'-0"



NOTICE OF COOPERATION
Release of these plans contemplates further cooperation among the owner, the contractor and the architect. Design and construction are complex. Although the architect and his consultants have performed their services with due care and diligence, they cannot guarantee perfection. Communication is imperfect and every contingency cannot be anticipated. Any ambiguity or discrepancy discovered by the use of these plans shall be reported immediately to the architect. Failure to notify the architect compounds misunderstanding and increases construction costs. A failure to cooperate by a simple notice to the architect shall relieve the architect from responsibility for the consequences. Changes made from the plans without consent of the architect are unauthorized and shall relieve the architect of responsibility for all consequences arising out of such changes.
All design, documents and data prepared by Eric Smith Associates, P.C. as instruments of service, shall remain property of Eric Smith Associates, P.C. and shall not be copied, changed or disclosed in any form whatsoever without first obtaining the express written consent of Eric Smith Associates, P.C.
Eric Smith Associates, P.C.

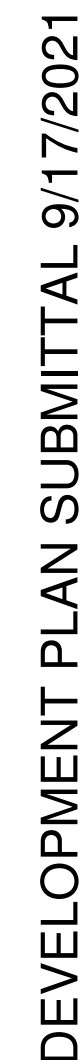
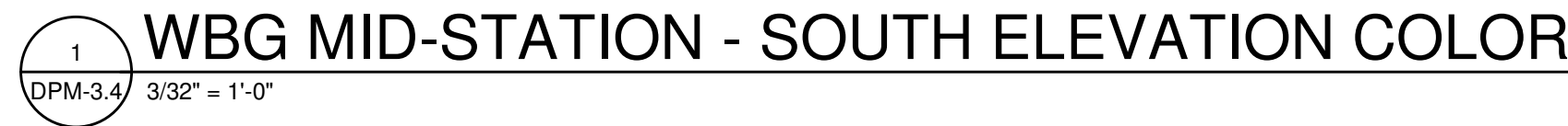
REVISIONS		
No.	Description	Date

SSRC WILD BLUE GONDOLA
LOWER TERMINAL & MID-STATION
STEAMBOAT SPRINGS, CO

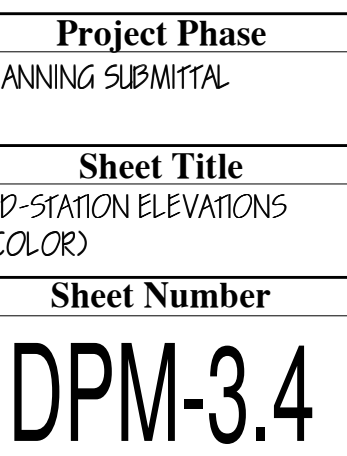


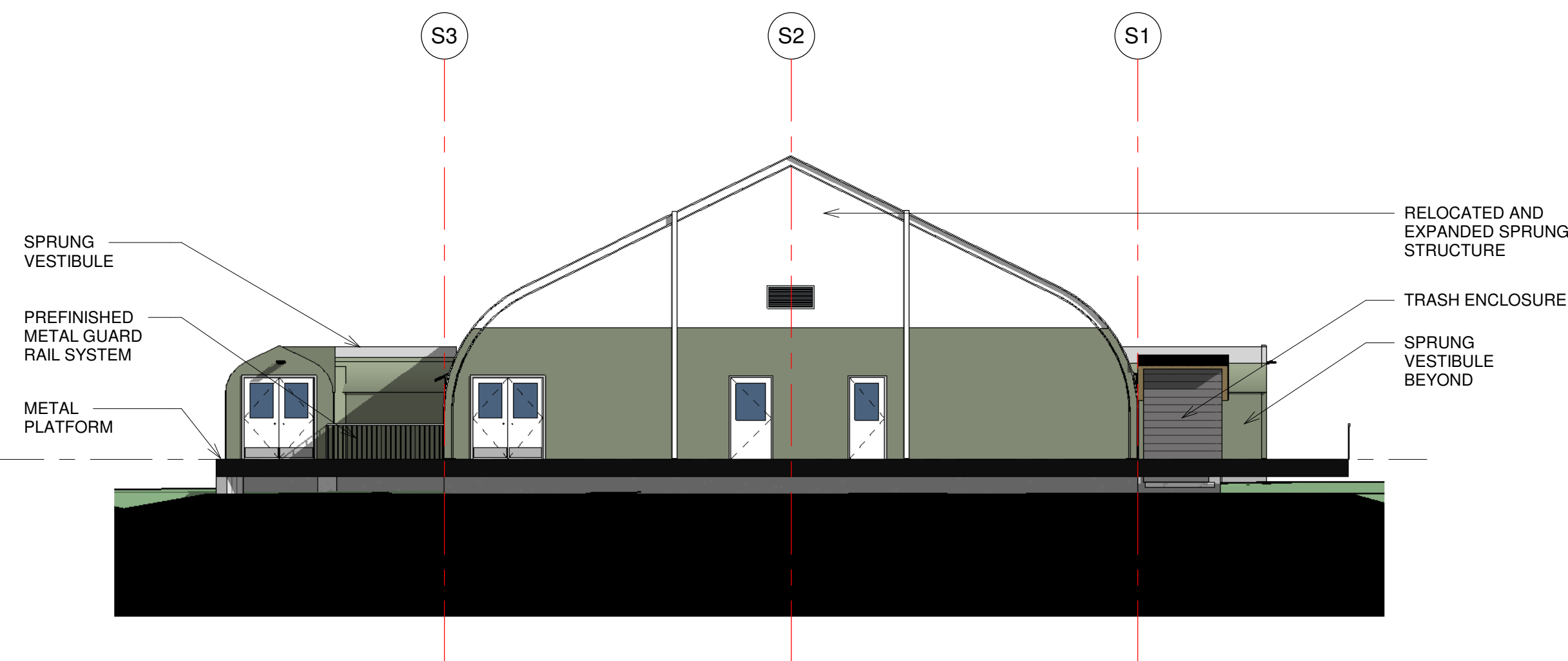
Job Number: 20037.00
Date:
Drawn By: Author
Checked By: Checker

Project Phase
PLANNING SUBMITTAL
Sheet Title
MID-STATION ELEVATIONS
Sheet Number
DPM-3.3

[illegible]

SSRC WILD BLUE GONDOLA
LOWER TERMINAL & MID-STATION
STEAMBOAT SPRINGS, CO





2 WBG SPRUNG - SOUTH ELEVATION COLOR
DPM-3.6 3/32" = 1'-0"

[illegible]

SSRC WILD BLUE GONDOLA
LOWER TERMINAL & MID-STATION
STEAMBOAT SPRINGS, CO



Job Number:	20037.00
Date:	
Drawn By:	Author
Checked By:	Checker

Project Phase
PLANNING SUBMITTAL
Sheet Title
MID-STATION ELEVATIONS (COLOR)
Sheet Number
DPM-3.6

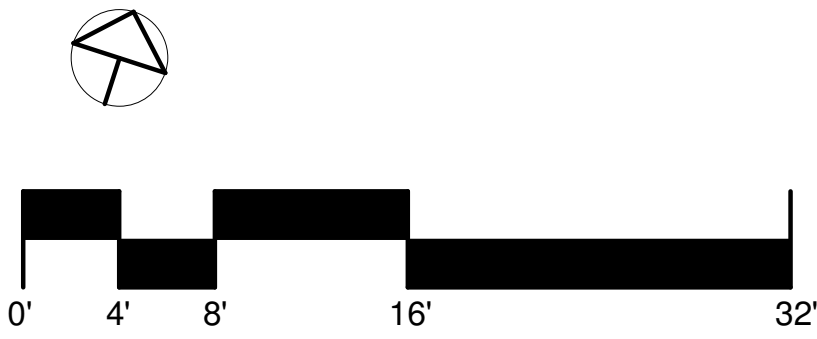
DEVELOPMENT PLAN SUBMITTAL 9/17/2021

[illegible]

ESF

ERIC SMITH ASSOCIATES, P.C.
1919 SEVENTH STREET
BOULDER, COLORADO, 80302
(303) 442-5458, (303) 442-4745 FAX

Project Phase
PLANNING SUBMITTAL
Sheet Title
MID-STATION LOWER LEVEL
Sheet Number
DPM-10.1

[illegible]

ESF

ERIC SMITH ASSOCIATES, P.C.
1919 SEVENTH STREET
BOULDER, COLORADO, 80302
(303) 442-5458, (303) 442-4745 FAX

Project Phase
PLANNING SUBMITTAL
Sheet Title
MID-STATION FIRST LEVEL
Sheet Number
DPM-10.2

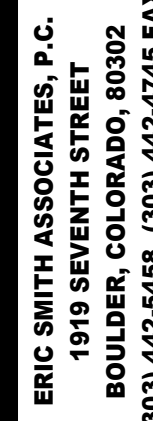


DEVE

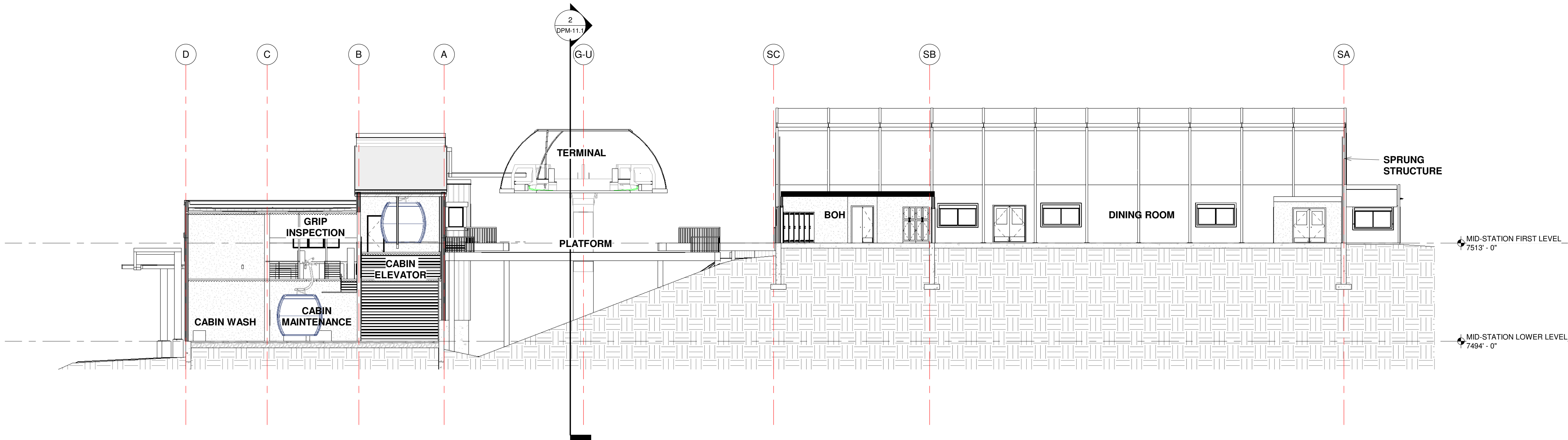
Eric Smith Associates, P.C.

[illegible]

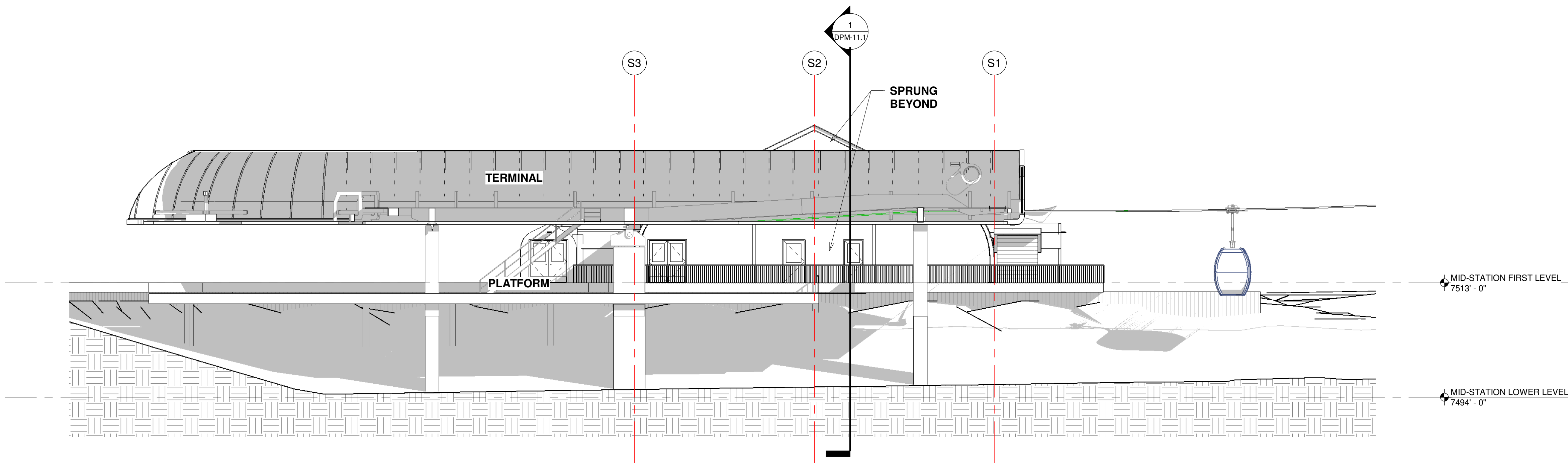
SSRC WILD BLUE GONDOLA
LOWER TERMINAL & MID-STATION
STEAMBOAT SPRINGS, CO



Project Phase
PLANNING SUBMITTAL
Sheet Title
MID-STATION ROOF LEVEL
Sheet Number
DPM-10.3



1 MID-STATION SITE SECTION 1
DPM-11.1 3/32" = 1'-0"



2 MID-STATION SITE SECTION 2
DPM-11.1 3/32" = 1'-0"



DEVELOPMENT PLAN SUBMITTAL 9/17/2021

NOTICE-DUTY OF COOPERATION
Release of these plans contemplates further cooperation among the owner, the contractor and the architect. Design and construction are complex. Although the architect and his consultants have performed their services with due care and diligence, they cannot guarantee perfection. Communication is imperfect and every contingency cannot be anticipated. Any ambiguity or discrepancy discovered by the use of these plans shall be reported immediately to the architect. Failure to notify the architect compounds misunderstanding and increases construction costs. A failure to cooperate by a simple notice to the architect shall relieve the architect from responsibility for the consequences. Changes made from the plans without consent of the architect are unauthorized and shall relieve the architect of responsibility for all consequences arising out of such changes.
All design, documents and data prepared by Eric Smith Associates, P.C. as instruments of service, shall remain property of Eric Smith Associates, P.C. and shall not be copied, changed or disclosed in any form whatsoever without first obtaining the express written consent of Eric Smith Associates, P.C.
Eric Smith Associates, P.C.

REVISIONS		
No.	Description	Date

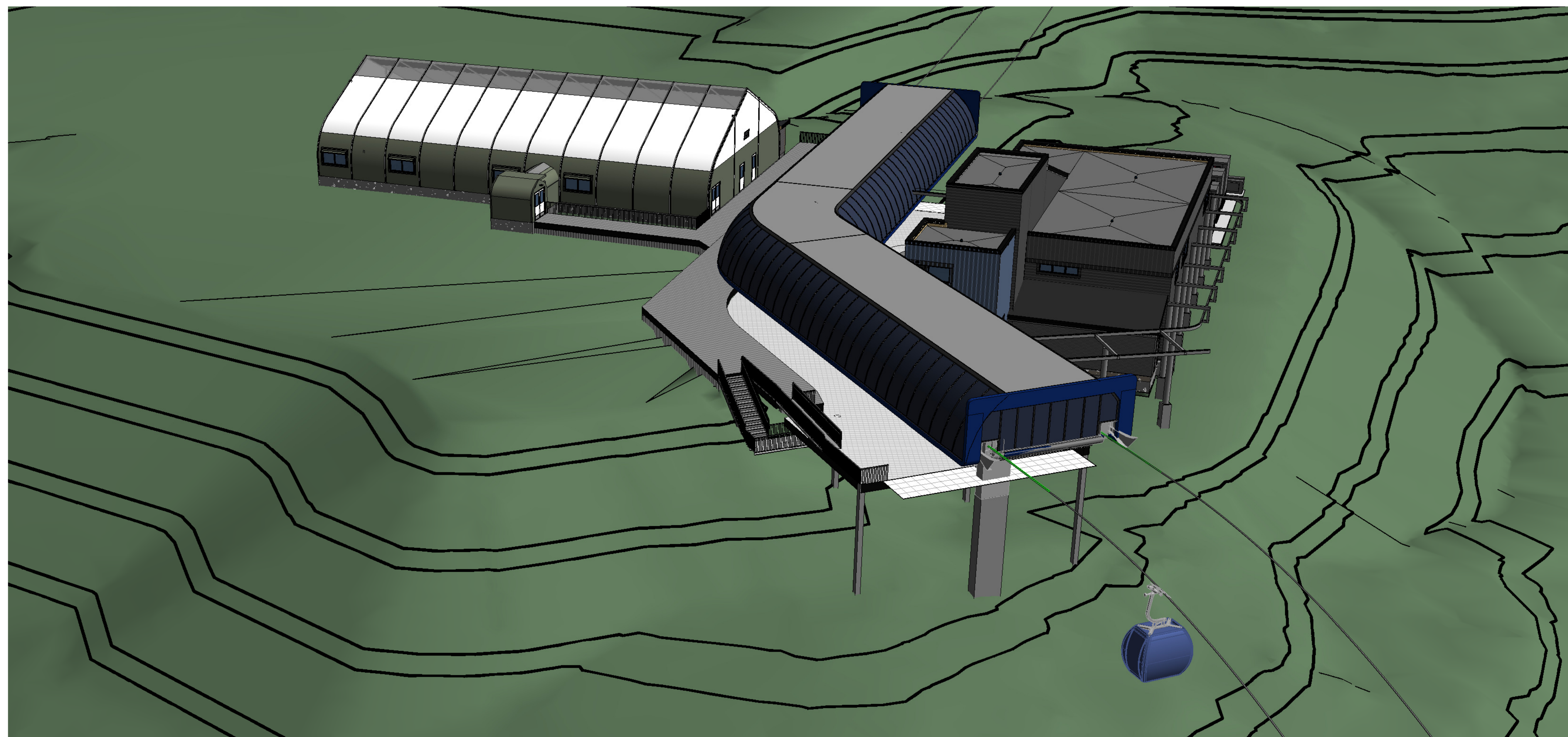
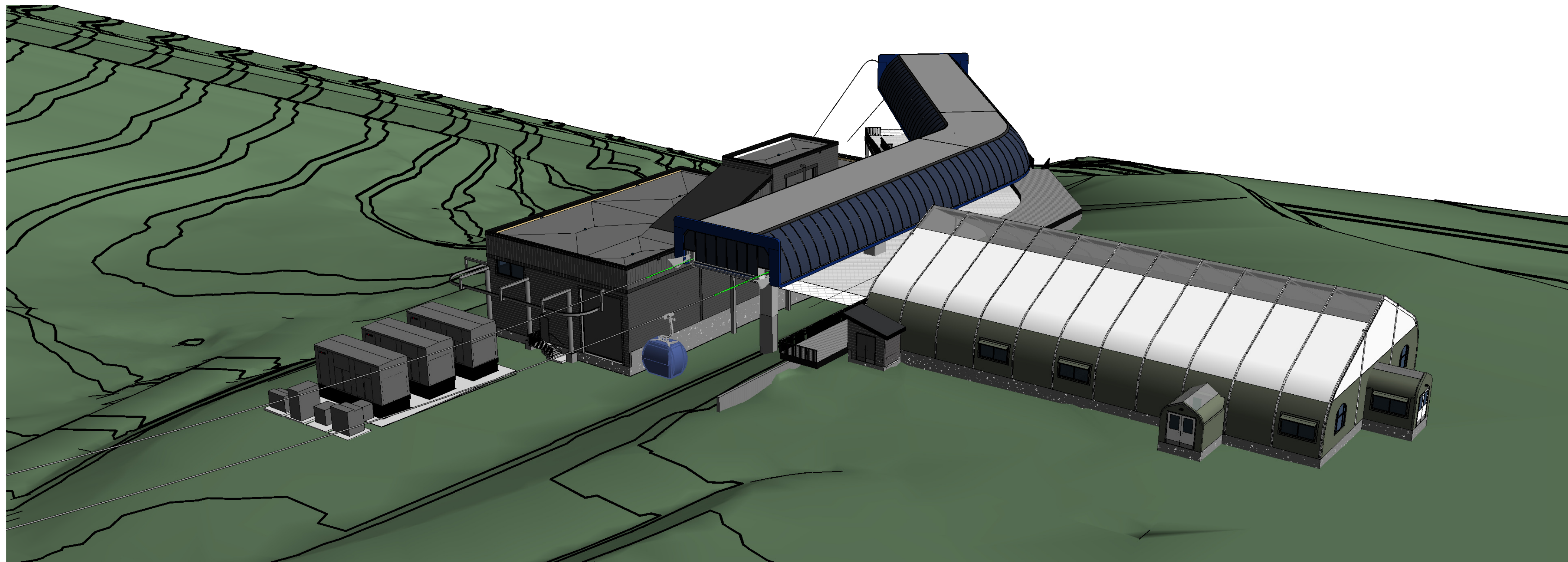
SSRC WILD BLUE GONDOLA
LOWER TERMINAL & MID-STATION
STEAMBOAT SPRINGS, CO



ERIC SMITH ASSOCIATES, P.C.
1919 SEVENTH STREET
BOULDER, COLORADO, 80302
(303) 442-5456, (303) 442-4745 FAX

Job Number:	20037.00
Date:	
Drawn By:	Author
Checked By:	Checker

Project Phase
PLANNING SUBMITTAL
Sheet Title
MID-STATION SITE SECTIONS
Sheet Number
DPM-11.1



NOTICE: DUTY OF COOPERATION

NOTICE: DUTY OF COOPERATION

Release of these plans contemplates further cooperation among the owner, his contractor and the architect. Design and construction are complex. Although the architect and his consultants have performed their services with due care and diligence they cannot quarantee that the plans will be perfect and every contingency cannot be anticipated. Any ambiguity or discrepancy discovered by the use of these plans shall be reported immediately to the architect. Failure to notify the architect compounds misunderstanding and increases construction costs. Failure to cooperate by a simple notice to the architect shall relieve the architect from responsibility for the consequences. Changes made from the plans without the consent of the architect shall be considered as relieving the architect of responsibility for all consequences arising out of such changes.

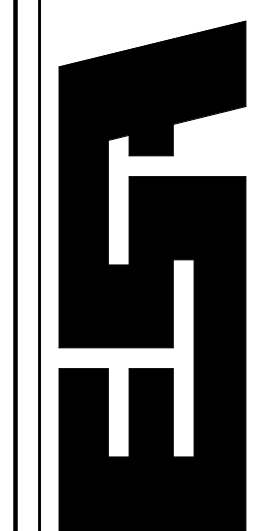
All design, documents and data prepared by Eric Smith Associates, P.C. as instruments of service shall remain property of Eric Smith Associates, P.C. and shall not be copied, changed or disclosed in any form whatsoever without first obtaining the express written consent of Eric Smith Associates, P.C.

Eric Smith Associates, P.C.

REVISIONS

[illegible]

SSRC WILD BLUE GONDOLA
LOWER TERMINAL & MID-STATION
STEAMBOAT SPRINGS, CO



ERIC SMITH ASSOCIATES, P.C.
1919 SEVENTH STREET
BOULDER, COLORADO, 80302

Job Number:	20037.C
--------------------	---------

Job Number:	2001710
Date:	

Drawn By:	Author
-----------	--------

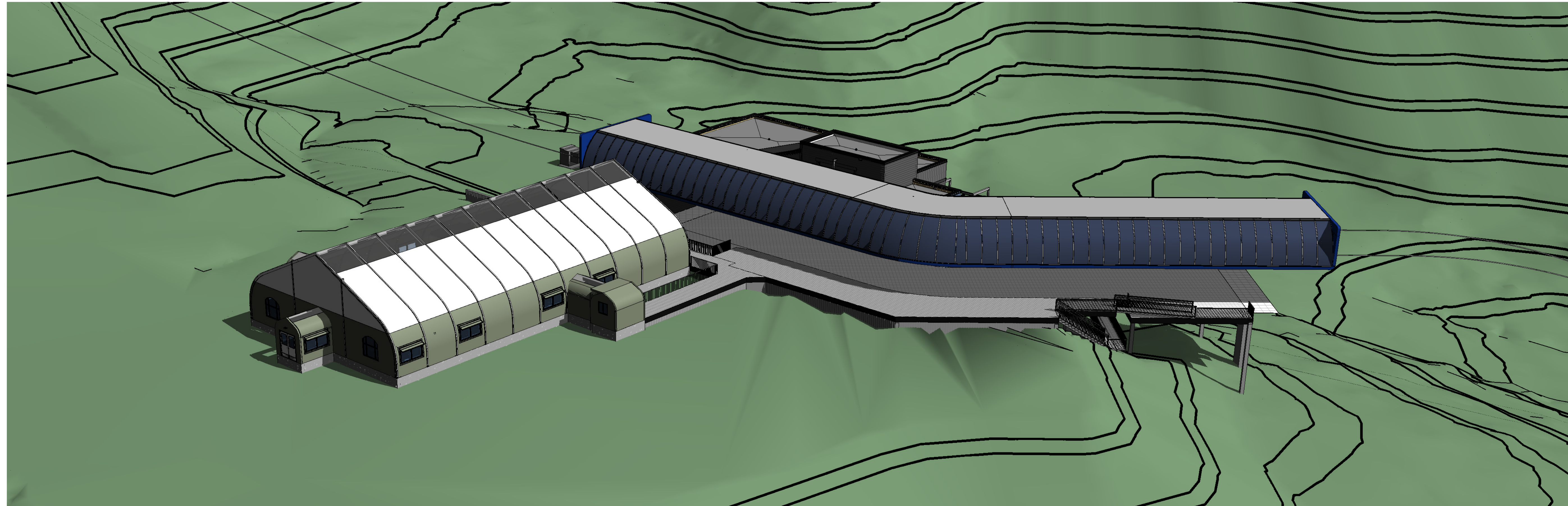
Checked By:	Checker
-------------	---------

Project Phase
PLANNING SUBMITTAL

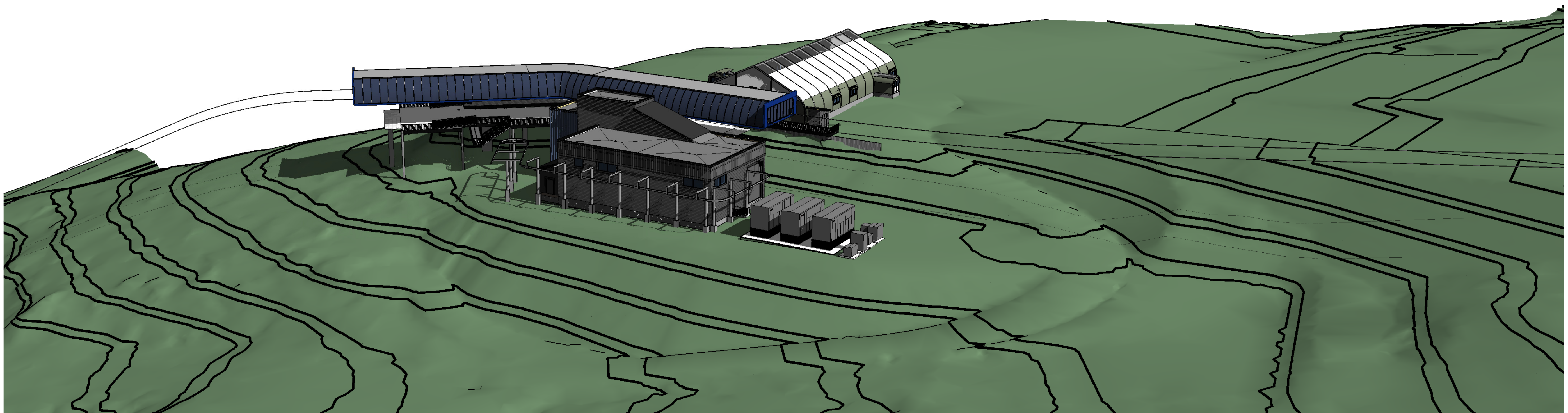
Sheet Title
MID-STATION BUILDING VIEWS

Sheet Number

DPM-19.1



1 MID-STATION VIEW FROM NORTH



2 MID-STATION VIEW FROM SOUTH

NOTICE: DUTY OF COOPERATION

Release of these plans constitutes further cooperation among the owner, his contractor and the architect. Design and construction are complex. Although the architect and his consultants have performed their services with due care and diligence, they cannot guarantee perfection. Communication is imperative for certain coordination and clarification. Any ambiguity or discrepancy discovered by the use of these plans shall be reported immediately to the architect. Failure to notify the architect compounds misunderstanding and increases construction costs. A failure to cooperate by a simple notice to the architect should not be construed as a waiver of the consequences. Changes made from the plans without consent of the architect are unauthorized and shall relieve the architect of responsibility for all consequences arising out of such changes.

All design, documents and data prepared by Eric Smith Associates, P.C. as instruments of service shall remain property of Eric Smith Associates, P.C. and shall not be copied, changed or disclosed in any form whatsoever without first obtaining the express written consent of Eric Smith Associates, P.C.

© Eric Smith Associates, P.C.

REVISIONS

[illegible]

SSRC WILD BLUE GONDOLA
LOWER TERMINAL & MID-STATION
STEAMBOAT SPRINGS, CO



Job Number:	20037.00
Date:	
Drawn By:	Author
Checked By:	Checker

Project Phase
PLANNING SUBMITTAL
Sheet Title
MID-STATION BUILDING VIEWS

Sheet Number
DPM-19.2

DEVELOPMENT PLAN SUBMITTAL 9/17/2021