



- DRAWING LIST**
- G 1.0 COVER SHEET
 - C.100 SITE PLAN
 - C.700 PHASING PLAN
 - C.710 EASEMENTS
 - A 2.1 GROUND LEVEL PLAN
 - A 2.2 TYPICAL FLOOR PLAN
 - A 3.01 EXISTING SOUTH AND WEST ELEVATIONS
 - A 3.2 BUILDING SECTIONS

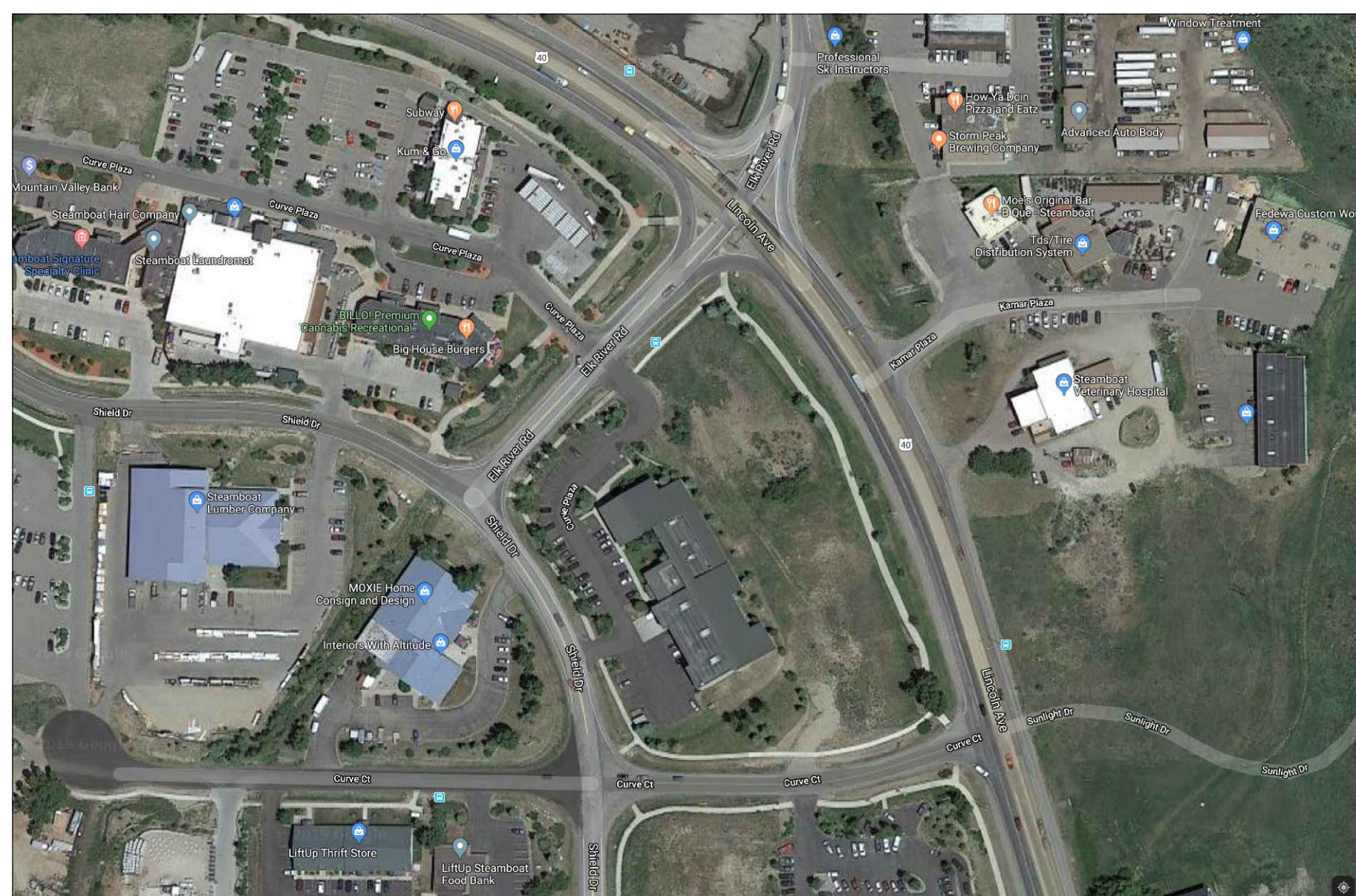
STEAMBOAT BASECAMP - SUBSTANTIAL CONFORMANCE SUBMITTAL

RESOLUTION #2021-36_DPVC-21-06

1901 CURVE PLAZA

STEAMBOAT SPRINGS, COLORADO 80487

VICINITY MAP



PROJECT TEAM

OWNER

MAY RIEGLER PROPERTIES
2201 WISCONSIN AVENUE NW SUITE 200
WASHINGTON, DC 20007

PO BOX 881330
STEAMBOAT SPRINGS, CO 80488

ARCHITECT

KASA
3318 N. COLUMBUS ST.
ARLINGTON, VA 22207

CIVIL ENGINEER

LANDMARK ENGINEERS & SURVEYORS
141 9TH STREET
PO BOX 774943
STEAMBOAT SPRINGS, CO 80477

PROJECT SUMMARY TABLE

GROSS FLOOR AREA:	64,073 GSF
NET FLOOR AREA:	52,142 NSF
UNIT SIZE:	616 SF AVERAGE
NUMBER OF UNITS:	75
ZONING:	CS
FRONTAGE:	CURVE CT: 263' / SHIELD DR: 350' / ELK RIVER RD: 380' / HWY 40: 377'

USE BREAKDOWN	DESCRIPTION	SQUARE FOOTAGE	# OF UNITS
PRINCIPAL USE	RESIDENTIAL	55,934 SF	75
ACCESSORY USES	COMMERCIAL	8,139 SF	-

STANDARDS	ZONE DISTRICT REQMTS	PROPOSED	VARIANCE? (Y/N)
LOT AREA	NO MAX/NO MIN	2.64 ACRES	N
LOT COVERAGE	NO MAX/NO MIN	19.7%	N
OPEN SPACE	15% MIN	52.67%	N
FLOOR AREA RATIO	NO MAX	0.58 FAR	N
OVERALL BLDG HT	63' MAX	53'-3"	N
AVERAGE PLATE HT	N/A		
FRONTAGE AREA HT	26' MIN	27'-7" (EXIST) / 51'-9" (NEW)	N
FRONT SETBACK	5 FT MIN	COMPLIES	N
SIDE SETBACK	7.5 FT MIN	COMPLIES	N
UPPER STORY SETBACK	OVER 45' OR 3 STORIES	VARIES	Y
REAR SETBACK	7.5 FT MIN	COMPLIES	N
SECOND STORY INTENSITY	50% MINIMUM	NEW CONST: 100%	N
PARKING	128 SPACES (SEE NARRATIVE)	128 SPACES	N
SNOW STORAGE	29,301 SF	32,478 SF	N

APPROVAL STAMPS:

6	10/15/2021	Substantial Conformance Submittal
5	6/17/2021	Development Plan Submittal #5
4	4/19/2021	Development Plan Submittal #4
3	10/14/2020	Development Plan Submittal #3
2	7/8/2020	Development Plan Submittal #2
1	3/27/2020	Development Plan Submittal
No.	Date	Description

SUBMISSIONS & REVISIONS

OWNER

May Riegler Properties
2201 Wisconsin Avenue NW Suite 200
Washington, DC 20007
PO Box 881330
Steamboat Springs, CO 80488

ARCHITECT

KASA
KEVIN & ASAKO SPERRY ARCHITECTURE
3318 N. Columbus Street
Arlington, VA 22207
T.312.636.3248 / 312.636.4252
www.kasa-arch.com

STRUCTURAL ENGINEER

M.E.P. & F.P. ENGINEERS

CIVIL ENGINEER

LANDMARK CONSULTANTS, INC.
141 9th Street
PO Box 774943
Steamboat Springs, Colorado 80477
T.970.871.9494

LANDSCAPE ARCHITECT

MGC DESIGN, INC.
PO Box 773522
Steamboat Springs, Colorado 80477
T.970.879.7740

GENERAL CONTRACTOR

PROJECT LOCATION

Steamboat Basecamp

1901 Curve Plaza
Steamboat Springs, CO

DRAWING TITLE

COVER SHEET

SEAL

DATE:

03/27/20

DRAWN BY:

CHECKED BY:

PROJECT NO:

DRAWING NO:

G 1.0