

CONTROL DEVICE LEGEND		LIGHTING SYMBOL LEGEND	
<div><div>ZONE</div><div>XX</div><div>XXXX</div></div>	CONTROL ZONE TAG	<div><div></div><div></div></div>	RECESSED DOWNLIGHT
<div><div></div></div>	LOCAL SWITCH	<div><div></div><div></div></div>	RECESSED ADJUSTABLE DOWNLIGHT
<div><div></div></div>	CONTROL STATION	<div><div></div><div></div></div>	RECESSED WALLWASHER
<div><div></div></div>	CONTROL RECEPTACLE STATION	<div><div></div><div></div></div>	RECESSED SHOWER LIGHT
<div><div>DEVICE</div><div>ID</div></div>	CONTROL DEVICE TAG	<div><div></div><div></div></div>	PENDANT OR CLOSE-CEILING MOUNTED FIXTURE
<div><div>DC DIM</div><div>TRANS</div></div>	LED DIMMER CONTROLLER TO TRANSFORMER/POWER SUPPLY. REQUIRES 0-10V CONTROL SIGNAL.	<div><div></div><div></div></div>	SURFACE-MOUNTED ACCENT LIGHT
<div><div>CLD</div><div>WATTAGE LIMIT</div></div>	TRACK CURRENT LIMITER	<div><div></div><div></div></div>	TRACK MOUNTED ACCENT LIGHT
	KEYNOTE	<div><div></div><div></div></div>	WALL MOUNTED FIXTURES
	REVISIONS	<div><div></div><div></div></div>	RECESSED 2 X 4, 2 X 2
FIXTURE NAMING LEGEND		<div><div></div><div></div></div>	SURFACE MOUNTED 2 X 4, 2 X 2
D 1 F A		<div><div></div><div></div></div>	PENDANT MOUNTED LINEARS
A - ADJUSTABLE D - DOWNLIGHT/WALLWASH F - FLOURESCENT L - LINEAR LED P - PENDANT S - SURFACE T - TRACK U - INGRADE UPLIGHT V - LOW VOLTAGE STRIP W - SCENCE X - FIBER Z - MISC/SPECIALTY DP - DECORATIVE PENDANT DW - DECORATIVE WALL MOUNT SL - STEPLIGHTS TH - THEATRICAL FIXTURES AA - EXTERIOR ACCENT LIGHT BB - EXTERIOR BOLLARD PP - POLE UU - EXTERIOR IN-GRADE UPLIGHT		<div><div></div><div></div></div>	STEPLIGHT
F - FLOOD (36 DEGREE - 59 DEGREE) N - NARROW SPOT (20 DEGREE - 35 DEGREE) S - SPOT (10 DEGREE - 19 DEGREE) W - WIDE FLOOD (60 DEGREE - 120 DEGREE) V - VERY NARROW SPOT (2 DEGREE - 9 DEGREE) A - D - MISC DIFFERENCES		<div><div></div><div></div><div></div></div>	INGRADE UPLIGHT
		<div><div></div></div>	FLOODLIGHT
		<div><div></div><div></div></div>	BOLLARD
		<div><div></div><div></div></div>	POLE LIGHT
		<div><div></div></div>	MULTI-HEAD RECESSED TROUGH FIXTURE
		<div><div>LED</div><div>LED</div><div>LED</div></div>	LED STRIPLIGHT
		<div><div></div></div>	LOW-VOLTAGE STRIPLIGHT
		<div><div>LED</div><div>LED</div><div>LED</div></div>	LINEAR LED SYSTEM

LIGHTING SHEET INDEX

Sheet Number					Sheet Name					
X	X	X	X	X	LT-000	LIGHTING SHEET INDEX				
X	X	X	X	X	LT-001	GENERAL LIGHTING REQUIREMENTS				
X	X	X	X	X	LT-001-1	GENERAL LIGHTING CONTROL REQUIREMENTS				
X	X	X	X	X	LT-002	LIGHTING FIXTURE SCHEDULE				
X	X	X	X	X	LT-003	LIGHTING FIXTURE SCHEDULE				
X	X	X	X	X	LT-004	LIGHTING FIXTURE SCHEDULE				
X	X	X	X	X	LT-005	LIGHTING FIXTURE SCHEDULE				
X	X	X	X	X	LT-006	LIGHTING FIXTURE SCHEDULE				
X	X	X	X	LT-007	LIGHTING FIXTURE SCHEDULE					
X	X	X	X	X	LT-008	LIGHTING CONTROL ZONE SCHEDULE				
X	X	X	X	X	LT-009	LIGHTING CONTROL ZONE SCHEDULE				
X	X	X	X	X	LT-010	LIGHTING CONTROL ZONE SCHEDULE				
X	X	X	X	X	LT-011	LIGHTING CONTROL ZONE SCHEDULE				
X	X	X	X	X	LT-012	LIGHTING CONTROL STATION SCHEDULE				
X	X	X	X	X	LT-050	SITE LIGHTING PLAN				
X	X	X	X	X	LT-100-A	LEVEL 1 AREA A - LIGHTING				
X	X	X	X	X	LT-100-C	LEVEL 1 AREA C - LIGHTING CORRIDOR				
X	X	X	X	X	LT-100-D	LEVEL 1 AREA D - LIGHTING				
X	X	X	X	X	LT-101-A	LEVEL 1 AREA A - LIGHTING				
X	X	X	X	X	LT-101-B	LEVEL 1 AREA B - LIGHTING				
X	X	X	X	X	LT-101-C	LEVEL 1 AREA C - LIGHTING				
X	X	X	X	X	LT-101-D	LEVEL 1 AREA D - LIGHTING RCP				
X	X	X	X	X	LT-101-E	LEVEL 1 AREA D - LIGHTING PLAN				
X	X	X	X	X	LT-101-F	LEVEL 1 LIBRARY - LIGHTING				
X	X	X	X	X	LT-101-G	LEVEL 2 LIBRARY - LIGHTING				
X	X	X	X	X	LT-101-H	LEVEL 1 RETAIL - LIGHTING				
X	X	X	X	X	LT-102	LEVEL 2 OVERALL - LIGHTING CORRIDOR				
X	X	X	X	X	LT-102-E	LEVEL 2 POOL - LIGHTING				
X	X	X	X	X	LT-103	LEVEL 3 OVERALL - LIGHTING CORRIDOR				
X	X	X	X	X	LT-104	LEVEL 4 OVERALL - LIGHTING CORRIDOR				
X	X	X	X	X	LT-105	LEVEL 5 OVERALL - LIGHTING CORRIDOR				
X	X	X	X	X	LT-106	LEVEL 6 OVERALL - LIGHTING CORRIDOR				
X	X	X	X	X	LT-107	LEVEL 7 OVERALL - LIGHTING CORRIDOR				
X	X	X	X	X	LT-108	LEVEL 8 OVERALL - LIGHTING CORRIDOR				
X	X	X	X	X	LT-111	LEVEL 4 UNIT 2 LIGHTING PLAN				
X	X	X	X	X	LT-201	BUILDING ELEVATIONS - NORTH				
X	X	X	X	X	LT-202	BUILDING ELEVATIONS - EAST				
X	X	X	X	X	LT-203	BUILDING ELEVATIONS - SOUTH				
X	X	X	X	X	LT-204	BUILDING ELEVATIONS - WEST				



NOT FOR
CONSTRUCTION

1965 SKI TIME SQUARE DRIVE
STEAMBOAT SPRINGS, CO 80487

REVISIONS:

NO	DATE	DESCRIPTION
----	------	-------------

PROJECT NUMBER:
123134.00

DATE:
07/03/25

ISSUED FOR:
PERMIT SET

SHEET TITLE:
LIGHTING SHEET INDEX

SHEET NUMBER
LT-000

Autodesk Docs://123134.00 1965 Ski Time Square - Thunderhead/123134_1965 STS_THUNDERHEAD_LT23[1].rvt 6/23/2025 12:38:55 PM

- 6/23/2025 12:38:55 PM



LT-001

PROJECT NUMBER:
123134.00

DATE:
07/03/25

ISSUED FOR:
PERMIT SET

SHEET TITLE:
**GENERAL LIGHTING
REQUIREMENTS**

LT-001

PART 1 - GENERAL REQUIREMENTS

- A. ELECTRICAL CONTRACTOR GENERAL REQUIREMENTS
1.

WORK INCLUDES FURNISHING, DELIVERY, AND INSTALLATION OF NEW LIGHTING CONTROL EQUIPMENT, LIGHTING DATA DISTRIBUTION, DIMMER RACKS, AND POWER CIRCUIT RELAY SWITCHING EQUIPMENT.
2.

PROVIDE A COMPLETELY FUNCTIONING LIGHTING CONTROL SYSTEM. ALL EQUIPMENT, FITTINGS, AND PERIPHERAL DEVICES FOR CORRECT SYSTEM OPERATION SHALL BE QUOTED, SUPPLIED, INSTALLED, CONFIGURED, TESTED, AND COMMISSIONED.
3.

VERIFY ACCESSIBLE MOUNTING LOCATIONS, MOUNTING HARDWARE, AND WIRING REQUIREMENTS FOR ALL REMOTE DRIVERS, TRANSMITTERS, RECEIVERS, AND CONTROL INTERFACE DEVICES.
4.

VERIFY THAT ALL LED LIGHTING SOURCES HAVE POWER SUPPLY DRIVERS AND DMX CONTROL DEVICES THAT ARE APPROPRIATE FOR THE LIGHTING CONTROL SYSTEM.
5.

COORDINATE WITH THE CONTROL EQUIPMENT MANUFACTURER REGARDING ANY NON-STANDARD LOAD WIRING. ALL DMX 0-10V LOAD TYPES SHALL ALSO BE PAIRED WITH A SWITCHED CIRCUIT ON A CONTROL CHANNEL-BY-CHANNEL BASIS TO PROVIDE LOW-END TURN OFF CAPABILITIES.
6.

PROVIDE LOW VOLTAGE WIRING PER THE SYSTEMS MANUFACTURERS FINAL SHOP DRAWINGS.
7.

PROVIDE LIGHTING CONTROL OPERATING SOFTWARE, INCLUDING UPGRADES AT NO ADDITIONAL COST FOR 3 YEARS AFTER SYSTEM ACCEPTANCE.
8.

PROVIDE THE SERVICES OF A FACTORY-TRAINED AND AUTHORIZED REPRESENTATIVE OF THE LIGHTING CONTROL SYSTEM MANUFACTURER TO CONFIGURE, TEST, AND COMMISSION THE CONTROL SYSTEM.
- B. LIGHTING CONTROL INTEGRATION REQUIREMENTS
1.

ENGINEER THE LIGHTING CONTROL SYSTEM AND ITS RELATED COMPONENTS, BASED UPON THE DESIGN INTENT OF THE LIGHTING DESIGN CONSULTANT. ALL SYSTEM DRAWINGS MUST BE COORDINATED WITH THE ELECTRICAL ENGINEERS AND ARCHITECTS DRAWINGS AND SPECIFICATIONS. ENGAGE A PROFESSIONAL ENGINEER LICENSED IN THE STATE OF JURISDICTION TO PREPARE ANY ENGINEERING CALCULATIONS REQUIRED BY CODE.
2.

DOCUMENT ALL LOW-VOLTAGE LED WIRING REQUIREMENTS INCLUDING LED DRIVER TYPES, REMOTE DRIVER LOCATIONS, 0-10V DIMMING DEVICES, 0-10V WIRING DIAGRAMS, AND DMX WIRING DIAGRAMS.
3.

VERIFY THE APPROPRIATE DIMMER MODULES THAT ARE REQUIRED FOR PROPERLY CONTROLLING LED LIGHTING LOADS WITH SMOOTH FADE CURVES AND NO FLICKERING.
4.

PROVIDE LIGHTING CONTROL INTEGRATION SHOP DRAWINGS, INCLUDING MANUFACTURER EQUIPMENT DRAWINGS, CONTROL RISER DIAGRAM, CONTROL EQUIPMENT DETAIL DRAWINGS, AND CIRCUIT SCHEDULES. THE SHOP DRAWINGS AND RELATED EQUIPMENT DATA SHALL BE SUBMITTED IN ACCORDANCE WITH THE PROVISIONS OF DIVISION 1. SHOP DRAWINGS SHALL BE A UNIFIED PACKAGE COVERING ALL SYSTEM COMPONENTS WITH TITLE BLOCKS. COVER PAGES ON MANUFACTURER DRAWINGS ARE NOT ACCEPTABLE.
5.

PROVIDE THE SERVICES OF A PROJECT MANAGER WHO SHALL CONDUCT SITE VISITS DURING CONSTRUCTION, TO VERIFY FIELD CONDITIONS, AND TO ATTEND PRE-CONSTRUCTION COORDINATION AND CONSTRUCTION PROJECT MEETINGS, AS REQUIRED.
6.

REVIEW, VERIFY AND DOCUMENT ALL CIRCUITRY WIRING AND LIGHTING NETWORK DATA WIRING THAT WILL BE CONNECTED TO THE LIGHTING CONTROL SYSTEM.
7.

SUPERVISE OR PERFORM ALL LOW-VOLTAGE LIGHTING CONTROL DATA WIRING TERMINATIONS.
8.

CONFIGURE THE ADDRESSING OF DMX-CONTROLLED LIGHTING FIXTURES. CONFIGURE AND PROGRAM THE LIGHTING CONTROL SYSTEM ACCORDING TO THE LIGHTING DESIGN CONSULTANT'S DIRECTION.
- C. THE CONTRACTOR AND SYSTEMS INTEGRATOR SHALL PROVIDE THE FOLLOWING ON-SITE CONFIGURATION AND PROGRAMMING SERVICES:
1.

SUFFICIENT CONFIGURATION TIME TO PROPERLY TERMINATE ALL CONTROL WIRING; BIND ALL CONTROL INTERFACE DEVICES TO THE SYSTEM; CONFIGURE DMX AND LIGHTING CONTROL NETWORKS; TEST ALL CONTROL DEVICES; VERIFY ALL LOAD CIRCUIT ASSIGNMENTS; SET AND PATCH CONTROL ADDRESSES FOR ANY LIGHTING FIXTURES WHICH UTILIZE CONTROL DATA; AND PERFORM ANY OTHER TASKS WHICH ARE NECESSARY FOR THE TESTING AND PROPER CONFIGURATION OF THE SYSTEM PRIOR TO PROGRAMMING LIGHTING SCENES AND SEQUENCES.
2.

MINIMUM 3 DAYS OF PROGRAMMING ASSISTANCE UNDER THE CREATIVE DIRECTION OF THE LIGHTING DESIGN CONSULTANT TO SET LEVELS FOR LIGHTING PRESETS AND DYNAMIC SEQUENCES. THE TECHNICIAN ASSISTING THE CONSULTANT SHALL HAVE PRIOR EXPERIENCE WITH EACH TYPE OF SYSTEM AND SOFTWARE TO BE USED, AND SHALL HAVE PERFORMED THIS FUNCTION ON PROJECTS OF SIMILAR SCOPE AND SIZE.
3.

MINIMUM 2 DAY OF PROGRAMMING ASSISTANCE UNDER THE CREATIVE DIRECTION OF THE OWNER OR THE LIGHTING DESIGN CONSULTANT TO REVISE LIGHTING EFFECTS OR TO CREATE NEW LIGHTING EFFECTS, IF REQUESTED BY THE OWNER, 2 MONTHS AFTER SYSTEM ACCEPTANCE.
4.

MINIMUM 2 DAYS OF SYSTEM RE-CONFIGURATION, IF REQUESTED BY THE OWNER OR LIGHTING DESIGN CONSULTANT, 6 MONTHS AFTER SYSTEM ACCEPTANCE.
5.

MINIMUM 1 DAY OF PROGRAMMING ASSISTANCE UNDER THE CREATIVE DIRECTION OF THE OWNER OR THE LIGHTING DESIGN CONSULTANT TO REVISE LIGHTING EFFECTS OR TO CREATE NEW LIGHTING EFFECTS, IF REQUESTED BY THE OWNER, 6 MONTHS AFTER SYSTEM ACCEPTANCE.
6.

THE SERVICE DURATIONS LISTED ESTABLISH MINIMUMS. THE CONTRACTOR SHALL NEGOTIATE THE TIME NECESSARY TO CONFIGURE THE SYSTEM AT THE TIME AND THE REQUISITE STAGE OF PREPARATION PRIOR TO THE LIGHTING DESIGN CONSULTANT'S OR OWNER'S ON-SITE LIGHTING DIRECTION WORK SESSIONS. IN NO EVENT SHALL THE TIME ALLOCATED FOR ON-SITE LIGHTING DIRECTION BE REDUCED TO ALLOW FOR ADDITIONAL SYSTEM CONFIGURATION TIME, NOR SHALL THE OWNER BE CHARGED FOR ADDITIONAL TIME WHERE THE SYSTEM DESIGN HAS NOT BEEN CHANGED.
- D. COMPLETION AND WARRANTY
1.

PROVIDE TO THE OWNER (3) COPIES OF AN "OPERATION AND SERVICE MANUAL," BOUND IN A HARD COVER BINDER AND CONTAINING FINAL AS-BUILT SHOP DRAWINGS, CATALOG DATA, OPERATIONS AND MAINTENANCE DATA, PARTS LISTS, SOURCES FOR PARTS AND SERVICE, GUARANTEES AND WARRANTIES, LIGHTING CONTROL SCHEDULES, AND INSTRUCTIONS NECESSARY FOR THE PROPER OPERATION AND MAINTENANCE OF THE SYSTEM. THE INSTRUCTIONS MUST BE WRITTEN IN A MANNER THAT EASILY DESCRIBES THE NECESSARY DAY-TO-DAY OPERATING PROCEDURES.
2.

THE ELECTRICAL CONTRACTOR OR AUTHORIZED MANUFACTURER'S REPRESENTATIVE SHALL PROVIDE A MINIMUM OF THREE (3) HOURS OPERATIONS AND MAINTENANCE INSTRUCTION TO THE OWNER'S OPERATIONS PERSONNEL. ALL TRAINING SESSIONS SHALL BE COORDINATED WITH THE OWNER'S SCHEDULE. COST OF SUCH INSTRUCTIONAL SERVICES SHALL BE PART OF THE CONTRACTOR'S BID.
3.

FURNISH GUARANTEES COVERING ALL WORK IN ACCORDANCE WITH THE GENERAL REQUIREMENTS OF THE CONSTRUCTION CONTRACT.
4.

THE ELECTRICAL CONTRACTOR SHALL PROVIDE FIELD SERVICE MAINTENANCE, AT NO COST TO THE OWNER, WITHIN 24 HOURS OF NOTIFICATION OF SYSTEM MALFUNCTION. THIS SERVICE RESPONSE SHALL BE IN EFFECT FOR A PERIOD OF 12 MONTHS AFTER THE OWNER ACCEPTANCE OF THE SYSTEM.
5.

IF, DUE TO CONTRACTOR INSTALLATION-CAUSED MATTERS, THE LIGHTING DESIGN CONSULTANT IS REQUIRED TO PROVIDE EXTRA ON-SITE DESIGN COORDINATION AND IMPLEMENTATION SERVICES AFTER THE OWNER APPROVED AND AGREED UPON SITE VISITS, THE CONTRACTOR MUST COMPENSATE THE LIGHTING DESIGN CONSULTANT AT THEIR STANDARD HOURLY OR DAILY RATES FOR ALL TIME EXPENDED ON-SITE FOR ADDITIONAL PUNCH LIST NOTES, ADDITIONAL BACK CHECKS, EXTRA FOCUS AIMING WORK SESSIONS, OR EXTRA PROGRAMMING WORK SESSIONS.
- E. THE ABOVE SCOPE OF WORK IS INTENDED AS A REFERENCE GUIDE ONLY AND IS NOT INTENDED TO DEFINE THE LIMITS OF THE WORK NECESSARY FOR A COMPLETE INSTALLATION. ALL LABOR, MATERIALS, AND EQUIPMENT NECESSARY FOR THE PROPER OPERATION OF THE LIGHTING CONTROL SYSTEM MUST BE PROVIDED.

PART 2 - LIGHTING CONTROL SYSTEM DESIGN INTENT

- A. OVERALL SYSTEM DESCRIPTION
1.

THE LIGHTING CONTROL SYSTEM WILL BE BASED AROUND A SYSTEM OF ONE OR MORE MAIN CONTROL STATIONS THAT INTEGRATE USER CONTROLS AND PROCESSORS. THE MAIN CONTROL STATIONS SHALL BE PROGRAMMABLE PROCESSOR THAT IS CAPABLE OF MANAGING ALL LIGHTING LEVELS AND RECALLABLE PRESETS, AS WELL AS MANAGING ALL REMOTE-CONTROL STATIONS, PROGRAMMING PORTS, AND AUXILIARY INPUTS, OUTPUTS AND OTHER INTERFACES TO THE SYSTEM.
2.

ALL LIGHTING FIXTURES IN THE PUBLIC SPACES THAT ARE EQUIPPED WITH DIMMABLE DRIVERS OR SOURCES SHALL BE CONNECTED TO APPROPRIATE MODULES IN A DIMMING PANEL, CONNECTED TO THE LIGHTING CONTROL SYSTEM. NON-DIMMABLE LIGHTING FIXTURES IN THOSE SPACES SHALL BE CONNECTED TO RELAYS CONTROLLED BY THE SYSTEM.
3.

THE CONTROL SYSTEM FOR FRONT-OF-HOUSE INTERIOR LIGHTING SHALL BE CAPABLE OF RECORDING ALL CONNECTED LIGHTING INTO RECALLABLE PRESETS, FOR MULTIPLE INDEPENDENTLY CONTROLLED AREAS. WITHIN EACH PRESET, EACH CONNECTED DIMMER IS TO BE PROGRAMMABLE TO A LEVEL SPECIFIC TO THAT INDIVIDUAL PRESET. EACH CONNECTED RELAY IS TO BE SWITCHABLE ON OR OFF WITHIN EACH PRESET.
4.

THE CONTROL SYSTEM FOR FRONT-OF-HOUSE INTERIOR LIGHTING SHALL BE CAPABLE OF TRIGGERING SCHEDULED EVENTS FROM A REAL-TIME CLOCK AND RELATIVE TO SUNSET & SUNRISE.
5.

A MAIN CONTROL STATION WILL BE PROVIDED AT A BACK-OF-HOUSE LOCATION, OR AS A PART OF THE DIMMING PANELS, FROM WHICH LIGHTING LEVELS CAN BE SET WITHOUT USE OF PORTABLE EQUIPMENT.
6.

CONTROL STATIONS FOR FRONT-OF-HOUSE INTERIOR LIGHTING WILL BE PROVIDED AT MULTIPLE LOCATIONS. THE MASTER LOCAL CONTROL STATION WILL BE IN THE ELECTRICAL ROOM INTEGRATED INTO THE CONTROL EQUIPMENT RACK (CER). THE PRIMARY CONTROL STATION SHALL BE CAPABLE OF CONTROLLING LIGHTING LEVELS AND SELECTING PRESETS FOR ALL AREAS. THE SECONDARY CONTROL STATION SHALL BE CAPABLE OF CONTROLLING LIGHTING LEVELS AND SELECTING PRESETS IN THE REGISTRATION AND CIRCULATION AREAS AS WELL AS RESTROOMS. ALL F&B VENUES TO HAVE THEIR OWN LOCAL CONTROL STATION FOR CONTROL OF LIGHTING ZONES WITHIN THOSE AREAS. ANY STATION WILL BE CAPABLE OF BEING LOCKED OUT, EITHER LOCALLY VIA A PASSWORD, OR REMOTELY FROM THE MASTER STATION.
7.

A MINIMUM OF ONEA LOCAL CONTROL STATION WILL BE CONNECTED TO THE MASTER LIGHTING PROCESSOR FOR USE DURING PROGRAMMING OR FOR CONTROL OF LIGHTING PARAMETERS AT ANY OF THE DEFINED SPACES.

8.

IF REQUIRED, IN SOME AREAS, BLUETOOTH INTERFACE STATIONS WILL BE PROVIDED TO ALLOW CONFIGURATION, SCENE SELECTION, AND SCHEDULE EDITING VIA A MOBILE DEVICE.

9.

EACH SPACE WILL BE CAPABLE OF RECALLING MULTIPLE PRESETS MANUALLY VIA LOCAL OR REMOTE CONTROL STATIONS, OR VIA REAL-TIME CLOCK EVENT PROGRAMMING. PORT WILL BE PROVIDED IN EVERY SPACE TO ALLOW FOR SETUP AND PROGRAMMING OF THE LIGHTING LEVELS AND FOR USE WITH MAINTENANCE & TROUBLESHOOTING.

10.

WHERE AUTOMATIC DAYLIGHT CONTROLS ARE REQUIRED BY CODE, LIGHTING FIXTURES IN DAYLIT ZONES SHALL BE CIRCUITED TO DIMMERS AND RELAYS SEPARATE FROM THOSE OUTSIDE OF DAYLIT ZONES.

11.

AUTOMATIC DAYLIGHT CONTROLS SHALL BE CONFIGURED WITH UPPER AND LOWER THRESHOLDS AND RESPONSE TIMES SET BROADLY ENOUGH TO AVOID EXCESSIVE CYCLING FROM CHANGES IN DAYLIGHT LEVELS.

12.

OCCUPANT-SENSING CONTROLS SHALL BE CONFIGURED WITH A DELAY TIME TO BE CONFIRMED WITH AUTHORIZED MANUFACTURER'S REPRESENTATIVE WILL BE RESPONSIBLE FOR INTEGRATING CONTROL OF ALL ARCHITECTURAL LIGHTING ELEMENTS AND PROGRAMMING CONTROL SYSTEM FOR CORE FUNCTIONALITY. THE CONTRACTOR OR AN AUTHORIZED MANUFACTURER'S REPRESENTATIVE WILL WORK WITH THE LIGHTING DESIGN CONSULTANT IN SETTING INITIAL LIGHTING LEVELS AS PRESETS AND TO ENSURE THAT THE PROGRAMMING OF THE SYSTEM WILL ALLOW THE END-USER TO MODIFY LEVELS, PRESETS, AND EVENT ACTIVATION BASED ON THE OWNER'S REQUIREMENTS.
- B. SYSTEM COMPONENTS

1.

THE DIMMING AND CONTROL SYSTEM SHALL BE PROVIDED WITH SUFFICIENT CAPACITY TO SUPPORT THE NUMBER OF CONTROL ZONES INDICATED ON THE DRAWINGS. A "ZONE" SHALL BE DEFINED AS A GROUP OF LIGHTS ON ONE OR MORE DIMMERS OR RELAYS, CONFIGURED TO OPERATE AS A SINGLE CONTROL CHANNEL.

2.

PROVIDE A MAIN CONTROL STATION THAT INTEGRATES A TOUCHSCREEN OR OTHER APPROVED USER INTERFACE WITH A LIGHTING CONTROL PROCESSOR. PORTABLE DEVICES OR THIRD-PARTY SERVICE SHALL NOT BE REQUIRED TO PROGRAM LIGHTING LEVELS VIA THE MAIN CONTROL STATIONS.

3.

PROVIDE MODULAR RELAYDIMMER POWER PANELS AS REQUIRED WITH AN INTEGRAL PROCESSOR FOR NEW LIGHTING LOADS. REFER TO LIGHTING DESIGN DRAWINGS AND ELECTRICAL DRAWINGS FOR LIGHTING CONTROL LOAD SCHEDULES AND CIRCUITRY REQUIREMENTS.

4.

PROVIDE THE APPROPRIATE DIMMER MODULES AND SWITCH RELAY MODULES PER THE CONTROL PANEL SCHEDULE AND THE FINAL DESIGN PLANS. THE CONTRACTOR MUST VERIFY ALL MODULE TYPES PRIOR TO THE COMPLETION OF THE SHOP DRAWING SUBMITTALS.

5.

FOR CONTROL OF 0-10V DEVICES PROVIDE AN INTERFACE UNIT SPECIFICALLY DESIGNED TO PROVIDE 0-10V CONTROL FOR LIGHTING SYSTEMS.

6.

IF REQUIRED, PROVIDE TIMECLOCK MODULES CONFIGURED TO TRIGGER PRESETS ON THE DIMMER/RELAY PANELS.

7.

PROVIDE PUSHBUTTON KEYPAD CONTROL STATIONS FOR LOCAL CONTROL OF LIGHTING PRESETS.

8.

PROVIDE CONTROL RECEPTACLE STATIONS FOR SYSTEM CONFIGURATION.

9.

WHERE REQUIRED BY APPLICABLE ENERGY CODES, PROVIDE AND CONFIGURE OCCUPANCY SENSORS.

10.

WHERE AUTOMATIC DAYLIGHT CONTROLS ARE REQUIRED BY APPLICABLE ENERGY CODES, PROVIDE AND CONFIGURE DAYLIGHT SENSORS.

11.

IF REQUIRED, CONFIGURE THE SYSTEM TO RESPOND TO A SIGNAL FROM THE LIFE SAFETY SYSTEM BY OVERRIDING LEVELS FROM THE HOTEL LOBBY CONTROLLER, WITH PREDETERMINED STATIC PRESETS.

12.

IF REQUIRED, CONFIGURE THE SYSTEM AND PROVIDE NECESSARY CONTROL COMPONENTS SUCH THAT ALL LIGHTING FIXTURES CONNECTED TO EMERGENCY POWER WILL TURN ON AT FULL OUTPUT WHEN NORMAL POWER IS LOST.

C. BASIS OF DESIGN PRODUCTS

1.

FRONT OF HOUSE PUBLIC SPACES: LUTRON

a.

CONTROL SYSTEM: LUTRON ATHENA 1 - LINK WITH QX DIN RAIL PANEL/LQSGE MODULES.

b.

DIMMING AND RELAY PANELS: INTEGRAL TO MAIN CONTROL UNITS.

c.

KEYPAD CONTROL STATIONS: 'SEETOUCH'

2.

GUESTROOM AND RESIDENCE UNITS: LUTRON

a.

CONTROL SYSTEM: LUTRON MYROOM WITH GUEST ROOM MANAGEMENT SYSTEM AND BASIC CODE COMPLIANCE.

b.

SEE DEPLOYED TECH DRAWINGS FOR FULL BASIS OF DESIGN SYSTEM REQUIREMENTS.
-
-
- NOT FOR CONSTRUCTION
- 1965 SKI TIME SQUARE DRIVE
STEAMBOAT SPRINGS, CO 80487
- | NO | DATE | DESCRIPTION |
|----|------|-------------|
|----|------|-------------|
- PROJECT NUMBER:
123134.00

DATE:
07/03/25

ISSUED FOR:
PERMIT SET

SHEET TITLE:
GENERAL LIGHTING
CONTROL
REQUIREMENTS
- SHEET NUMBER
- LT-001.1
- 6/23/2025 12:38:56 PM Autodesk Docs//123134.00 1965 Ski Time Square - Thunderhead/123134_1965 STS_THUNDERHEAD_L123134.rvt

LIGHTING FIXTURE SCHEDULE

FIXTURE TYPE	DESCRIPTION	FINISH	MOUNTING	MANUFACTURER PRODUCT CODE	LIGHT SOURCE	POWER SUPPLY	FIXTURE WATTS (EACH OR PER FOOT)	INPUT WATTS (EACH OR PER FOOT)	FIXTURE VOLTAGE	CONTROL METHOD	DESIGNED REQUIRED MINIMUM DIMMING RANGE	LOCATION	FIXTURE NOTES	SOURCE TYPE
EXTERIOR														
AA1	EXTERIOR WET RATED FACTORY SEALED 6" ROUND LINE VOLTAGE ADJUSTABLE LED UPLIGHT WITH 18" RAISED TUBE INSTALLATION ASSEMBLY	STANDARD	GROUND	TARGETTI - KEPLERO SPJ-LSL-12-FINISH-F-27-10U2525K-10U4344-18-10U530	INTEGRAL LED BEAM: 18" CCT: 2700K CRI: 80 LUMENS: 1397	INTEGRAL	14	14	120/277V	0-10V	1%	LANDSCAPE		INTEGRAL LED
AA2	EXTERIOR WET RATED LOW VOLTAGE ADJUSTABLE LED WALL WASHER WITH WET LISTED REMOTE DRIVER	STANDARD	GROUND	SPJ LIGHTING SPJ-LSL-12-FINISH-HW-27K-12V TRANSFORMER: SPJ-60L12	INTEGRAL LED BEAM: WWV CCT: 2700K CRI: 80 LUMENS: 650	REMOTE	6	6	120V PRIMARY/ 12V SECONDARY					INTEGRAL LED
AA3	EXTERIOR WET RATED 3" ROUND LINE VOLTAGE LED UPLIGHT WITH 9" RAISED TUBE INSTALLATION ASSEMBLY	STANDARD	GROUND	TARGETTI - JUPITER JU-R-FL-2-27-24-BK-LV-POWER SUPPLY-1US3175X	INTEGRAL LED BEAM: 39" CCT: 2700K CRI: 80 LUMENS: 674	REMOTE	7	7	120V PRIMARY/ 24V SECONDARY			LANDSCAPE		INTEGRAL LED
BB1	EXTERIOR WET RATED 42" LINE VOLTAGE LED BOLLARD WITH TYPE 4 FORWARD THROW OPTICS	STANDARD	GROUND	STRUCTURA - MAC BOLLARD MAC-42L2750-4-WOOD FINISH-METAL FINISH-UNV-STD	INTEGRAL LED BEAM: TYPE 4 CCT: 2700K CRI: 90 LUMENS: CONTACT FACTORY	INTEGRAL	12	12	120/277V	0-10V	1%	SITE		INTEGRAL LED
DD1	3" ROUND APERTURE RECESSED LED FIXED DOWNLIGHT WITH SELF FLANGED TRIM, IC HOUSING, AND NARROW FLOOD BEAM	STANDARD	RECESSED	VISUAL COMFORT HOUSING: ENCL3R-F-L15-I TRIM: ENCL3R-F-D-927-FINISH-FLANGE FINISH	INTEGRAL LED BEAM: 40" CCT: 2700K CRI: 90 LUMENS: 1300	INTEGRAL	15	15	120V	ELECTRONIC LOW VOLTAGE/ REVERSE PHASE	1%	SITE		INTEGRAL LED
DD2	4" SQUARE APERTURE RECESSED LED FIXED DOWNLIGHT WITH SELF FLANGED TRIM, NON IC HOUSING, AND WIDE FLOOD BEAM	STANDARD	RECESSED	VISUAL COMFORT - HOUSING: E4PR-F-L27-D-N-VOLTS TRIM: EPR-F-R-D-927-6-FINISH-FLANGE FINISH	INTEGRAL LED BEAM: 60" CCT: 2700K CRI: 90 LUMENS: 2550	INTEGRAL	27	27	120/277V	0-10V	1%	PORTE COCHERE		INTEGRAL LED
DD3	4" SQUARE APERTURE RECESSED LED FIXED DOWNLIGHT WITH SELF FLANGED TRIM, NON IC HOUSING, AND FLOOD BEAM	STANDARD	RECESSED	VISUAL COMFORT - HOUSING: E4PR-F-L24-927-4-A-N-VOLTS TRIM: EPR-F-R-A-927-6-FINISH-FLANGE FINISH	INTEGRAL LED BEAM: 40" CCT: 2700K CRI: 90 LUMENS: 1800	INTEGRAL	24	24	120/277V	0-10V	1%	PORTE COCHERE		INTEGRAL LED
LL1	WET LISTED SURFACE MOUNTED LOW VOLTAGE SINGLE COLOR WARM WHITE LED LINEAR STRIP LIGHT WITH CHANNEL, FROSTED LENS, 120 DEGREE OPTIC	STANDARD	SURFACE	ALUZ A8-2IGY-STN-F-2-5W-10V-27K-WET-FINISH-LENGTH MOUNTING: A8-2IGY-STN-MC PROVIDE POWER SUPPLY AND ACCESSORIES FOR CODE COMPLIANT INSTALLATION	INTEGRAL LED BEAM: 120" CCT: 2700K CRI: 90 LUMENS: 257/FT	REMOTE	2.5	2.5	120V PRIMARY/ 24V SECONDARY	0-10V	1%	BENCH		INTEGRAL LED
LL2	WET LISTED SURFACE MOUNTED ILLUMINATED HANDRAIL LIGHTING SYSTEM	STANDARD	SURFACE	WILA - PUCK XT LUMINAIRE: PUCK-XT-RD-27K-ASB POWER SUPPLY: RMTPS-UNV-02000DIM HANDRAIL TO BE INCLUDED AND SPECIFICATING COORDINATED WITH LANDSCAPE ARCHITECT	INTEGRAL LED BEAM: 80" CCT: 2700K CRI: 90 LUMENS: 160	REMOTE	1.5	1.5	120/277V	0-10V	1%	STAIRS		INTEGRAL LED
LL3	WET LISTED SURFACE MOUNTED LINE VOLTAGE SINGLE COLOR WARM WHITE LED LINEAR STRIP LIGHT WITH CHANNEL, FROSTED LENS, 120 DEGREE OPTIC,	STANDARD	SURFACE	AZCLAM FLEX 120 PAC-101-LENGTH-1/END TYPE-A MOUNT: FACLPC500 SHORT LENSE: FACCL500 CLEAR	INTEGRAL LED BEAM: 120" CCT: 2700K CRI: 90 LUMENS: 308/FT	INTEGRAL	3.8	3.8	120V	0-10V	1%	EAVE		INTEGRAL LED
LL4	WET LISTED SURFACE MOUNTED LOW VOLTAGE SINGLE COLOR WARM WHITE LED LINEAR STRIP LIGHT WITH CORNER CHANNEL, FROSTED LENS, 120 DEGREE OPTIC	STANDARD	SURFACE	ALUZ A8-2IGY-CRN-F-3-6W-10V-27K-WET-FINISH-LENGTH MOUNTING: A8-2IGY-CRN-MC PROVIDE POWER SUPPLY AND ACCESSORIES FOR CODE COMPLIANT INSTALLATION	INTEGRAL LED BEAM: 120" CCT: 2700K CRI: 90 LUMENS: 370/FT	REMOTE	3.6	3.6	120V PRIMARY/ 24V SECONDARY	0-10V	1%	PORTE COCHERE		INTEGRAL LED
LL5	WET LISTED SURFACE MOUNTED LOW VOLTAGE SINGLE COLOR WARM WHITE LED LINEAR STRIP LIGHT WITH CHANNEL, FROSTED LENS, 120 DEGREE OPTIC	STANDARD	SURFACE	ALUZ A8-2IGY-STN-F-2-5W-10V-27K-WET-FINISH-LENGTH MOUNTING: A8-2IGY-STN-MC PROVIDE POWER SUPPLY AND ACCESSORIES FOR CODE COMPLIANT INSTALLATION	INTEGRAL LED BEAM: 120" CCT: 2700K CRI: 90 LUMENS: 257/FT	REMOTE	2.5	2.5	120V PRIMARY/ 24V SECONDARY	0-10V	1%	POOL BAR		INTEGRAL LED
LL6	SURFACE MOUNTED LINE VOLTAGE SINGLE COLOR WARM WHITE LED LINEAR STRIP LIGHT WITH ADJUSTABLE MOUNT, 60 X 60 DEG OPTIC	STANDARD	SURFACE	ALUZ A12IB-PVT-600-FINISH-27K-6W-10V-FEED-IP67-UNV-LENGTH	INTEGRAL LED BEAM: 60" X 60" CCT: 2700K CRI: 90 LUMENS: 1000/FT	INTEGRAL	8	8	120/277V	0-10V	1%	PORTE COCHERE		INTEGRAL LED
LL7	WET LISTED CORROSION RESISTANT SURFACE MOUNTED ADJUSTABLE LED ACCENT LIGHT WITH WIDE FLOOD OPTICS, REDISTAL, STANCHION AND HALF VISOR	STANDARD	SURFACE	HYDREL 470L-4FT-1000LMF-27K-MVOLT-WFL-MOUNT-PSSA-HVSR-INUB-ELV-BL	INTEGRAL LED BEAM: 95 x120" CCT: 2700K CRI: 84 LUMENS: 7296	INTEGRAL	64	64	120/277V	0-10V		ENTRY SIGNAGE		INTEGRAL LED
PP1	13 POLE WITH 4' ARM AND LED LUMINAIRE PER CITY STANDARDS	POLE: GRAY PAINT ARM & BASE CARNEGIE BRICK	GROUND	MOUNTAIN STATES LIGHTING: 13 POLE: 13P54-4-50-TUS SSARM/CAN/RINGS 41/18TR-16" CAL V-HH-PT000CARNER FIXTURE: DAN-D4-NL-60W2700K-U-2-CR-FEN-A-CG	INTEGRAL LED BEAM: TYPE 2 CCT: 2700K CRI: 90 LUMENS: 228	INTEGRAL	60	60	120/277V	0-10V	1%	CITY STREET		INTEGRAL LED
PP2	12-9" TALL STRAIGHT STEEL ROUND 5" POLE WITH EXTERIOR RATED POST TOP HOOD LED LUMINAIRE WITH BATWING OPTICS, FLOWER POT HANGER ACCESSORY	METAL	GROUND	TEKA - LARGE BEACON POLE MOUNT POLE: SR8-12-FLOWER POT HANGER FLOWER POT HANGER ACCESSORY FIXTURE: LSI XOLIA-H-5-LED-LW-WW-UE-BLK-CH-S-IL	INTEGRAL LED BEAM: BATWING CCT: 2700K CRI: 90 LUMENS: 5150	INTEGRAL	57	57	120/277V	0-10V	1%	COURTYARD		INTEGRAL LED
PP2A	16-0" TALL WOOD AND METAL POLE WITH EXTERIOR RATED LED HOOD LUMINAIRE WITH TYPE 3 OPTICS AND INTERNAL LOUVER SHIELD. POLE TO HAVE HORIZONTAL MAST ARM BANNER ARMS, FLOWER POT HANGER ACCESSORY	WOOD & BLACK METAL	GROUND	STRUCTURA - BEAM POLE: BEAM-16-8-4-METAL FINISH-80-80-WOOD FINISH-BNR-BC WITH HORIZONTAL MAST ARM-FLOWER POT HANGER ACCESSORY FIXTURE: LSI XOLIA-H-5-LED-LW-WW-UE-BLK-CH-S-IL	INTEGRAL LED BEAM: TYPE 3 CCT: 3000K CRI: 90 LUMENS: 6272	INTEGRAL	54	54	120/277V	0-10V	1%	ROADWAY ALONG RIVER	HOUSE SIDE SHIELD TO BE ORIENTED SUCH THAT VIEW OF LED IS MASKED FROM ADJACENT PROPERTY	INTEGRAL LED
PP3	19' TALL 4.5" ROUND POLE WITH 3 ADJUSTABLE HEADS WITH GLARE SHIELDS AND POTENTIAL INTEGRATION FOR SPEAKERS AND CAMERAS. CUSTOM DESIGN AND SPECIFICATION NUMBER FORTHCOMING	BLACK	POLE	LIGMAN POLE: SPD-RSS-4512-16"-4.5" HEADS: ODESSA 15 - LARGE SPEC: UO0-10A1-3V70-W-27W--01-120/277-DIM-A54331-A54531	INTEGRAL LED BEAM: 48" CCT: 2700K CRI: 80 LUMENS: 8038	INTEGRAL	70	70	120/277V	0-10V	1%	POOL		INTEGRAL LED
PP4	12' TALL ROUND ALUMINUM POLE CLAD IN WOOD WITH EYE BOLT AND POWER AT TOP FOR CONNECTION TO TYPE 951 STRING LIGHTS			PER COORDINATION WITH LANDSCAPE ARCHITECT								COURTYARD		
SL1	EXTERIOR RATED LOW VOLTAGE CAST IN PLACE POLYPROPYLENE HOUSING WITH LED LIGHT ELEMENT INTENDED TO BE POURED IN PLACE	STANDARD	RECESSED	SIMES FIXTURE: C.8020H PWER SUPPLY: S.2411	INTEGRAL LED BEAM: 32" CCT: 2700K CRI: 80 LUMENS: 631	REMOTE	9.3	9.3	120V PRIMARY/ 24V SECONDARY	ELECTRONIC LOW VOLTAGE/ REVERSE PHASE		LOW WALLS		INTEGRAL LED
SL2	EXTERIOR RATED MARINE GRADE CAST STAINLESS STEEL LINE VOLTAGE SHIELDED LED STEP LIGHT	STANDARD	RECESSED	WAC LIGHTING WL-LED200-27-FINISH	INTEGRAL LED BEAM: 120" CCT: 2700K CRI: 85 LUMENS:	INTEGRAL	3.5	3.5	120V	ELECTRONIC LOW VOLTAGE/ REVERSE PHASE		PORTE COCHERE		INTEGRAL LED
SS1	EXTERIOR WET RATED LED FESTOON AND CABLE LIGHTING SYSTEM MOUNTED TO 12' POLES WITH LARGE GLOBE, SHADE AND REMOTE POWER SUPPLY	BLACK	POLE	TIVOLI - LITESPHERE LSA2-B-24-V-19-LS-VIC-N-4-SHADE-12 POWER SUPPLY: DIMMABLE AS REQUIRED MOUNTING: CABLES, LOCK AND TENSION TOOL	INTEGRAL LED BEAM: 32" CCT: 2700K CRI: 80 LUMENS: 45/FT	REMOTE	1	1	120V PRIMARY/ 12V SECONDARY	0-10V	1%	COURTYARD		INTEGRAL LED
WW1	EXTERIOR RATED WALL MOUNTED LINE VOLTAGE LED SQUARE DOWNLIGHT WITH NARROW BEAM OPTICS	STANDARD	WALL	LIGMAN - JET 34 SQUARE UJE-30411-35W-N-W27-<FINISH>-120/277V-DIM	INTEGRAL LED BEAM: 20" CCT: 2700K CRI: 80 LUMENS: 4094	INTEGRAL	35	35	120/277V	0-10V	1%	FAÇADE		INTEGRAL LED

FIXTURE TYPE	DESCRIPTION	FINISH	MOUNTING	MANUFACTURER PRODUCT CODE	LIGHT SOURCE	POWER SUPPLY	FIXTURE WATTS (EACH OR PER FOOT)	INPUT WATTS (EACH OR PER FOOT)	FIXTURE VOLTAGE	CONTROL METHOD	DESIGNED REQUIRED MINIMUM DIMMING RANGE	LOCATION	FIXTURE NOTES	SOURCE TYPE
EXTERIOR														
WW2	EXTERIOR RATED WALL MOUNTED LINE VOLTAGE LED SQUARE DOWNLIGHT WITH NARROW BEAM OPTICS	STANDARD	WALL	LIGMAN - JET 32 SQUARE UJE-30371-18W-N-W27-<FINISH>-120/277V-DIM	INTEGRAL LED BEAM: 20" CCT: 2700K CRI: 80 LUMENS: 1618	INTEGRAL	15	15	120/277V	0-10V	1%	FAÇADE		INTEGRAL LED
WW3	NOT USED													
WW4	EXTERIOR RATED WALL MOUNTED LINE VOLTAGE LED DOWNLIGHT WITH MEDIUM BEAM OPTICS	BLACK	WALL	LIGMAN - GINO 4 UGI-31641-10W-14-W27-<FINISH>-DIM	INTEGRAL LED BEAM: TYPE 4 CCT: 2700K CRI: 80 LUMENS: 820	INTEGRAL	10	10	120/277V	0-10V	1%	UNIT ENTRIES		INTEGRAL LED
WW5	EXTERIOR RATED WALL MOUNTED LINE VOLTAGE LED DOWNLIGHT WITH MEDIUM BEAM OPTICS	BLACK	WALL	LIGMAN - MATRUX 4 SURFACE UMT-31416-141/14W-M-M-W27-<FINISH>-120/277V-DIM	INTEGRAL LED BEAM: 25" CCT: 2700K CRI: 80 LUMENS: 2X1128	INTEGRAL	28	28	120/277V	0-10V	1%	ENTRY FAÇADE		INTEGRAL LED
WW6	EXTERIOR RATED WALL MOUNTED LINE VOLTAGE LED DOWNLIGHT WITH WIDE BEAM OPTICS	BLACK	WALL	LITHONIA WST LED-P2-27K-VF-MVOLT-CONTROLS-DBLXD	INTEGRAL LED BEAM: FORWARD CCT: 2700K CRI: 80 LUMENS: 3163	INTEGRAL	25	25	120/277V	0-10V	1%	LOADING DOCK		INTEGRAL LED
WW7	EXTERIOR RATED WALL MOUNTED LINE VOLTAGE LED WALL SCONE		WALL	ALVA TEX-JR-60-FINISH-27 (MOD)	INTEGRAL LED BEAM: CCT: 2700K CRI: 80 LUMENS: 1221	INTEGRAL	37	37	120/277V	0-10V	1%	NORTH ENTRY		INTEGRAL LED
WW8	EXTERIOR RATED WALL MOUNTED LINE VOLTAGE LED WALL SCONE		WALL	AFX HARRISON HARV SERIES HARV0518L30D1BK	INTEGRAL LED BEAM: CCT: 2700K CRI: 80 LUMENS: 900	INTEGRAL	24	24	120V	ELECTRONIC LOW VOLTAGE/ REVERSE PHASE	1%	EXTERIOR BAR		INTEGRAL LED

FIXTURE TYPE	DESCRIPTION	FINISH	MOUNTING	MANUFACTURER PRODUCT CODE	LIGHT SOURCE	POWER SUPPLY	FIXTURE WATTS (EACH OR PER FOOT)	INPUT WATTS (EACH OR PER FOOT)	FIXTURE VOLTAGE	CONTROL METHOD	DESIGNED REQUIRED MINIMUM DIMMING RANGE	LOCATION	FIXTURE NOTES	SOURCE TYPE
FITNESS														
F-D1W	4" ROUND APERTURE RECESSED FIXED LED DOWNLIGHT WITH SELF FLANGED TRIM AND NON-IC HOUSING WITH WIDE FLOOD BEAM AND TRIM FOR WOOD CEILING	BRONZE VERIFY WITH ID	RECESSED	USAI B4RDM-24C3-30KH-90-S-BZ-BZ-NCSM-EXT16-UNV-D6E	INTEGRAL LED BEAM: 90" CCT: 3000K CRI: 90 LUMENS: 1487	INTEGRAL	24	24	120/277V	0-10V	1%	FITNESS		INTEGRAL LED
F-D2W	4" ROUND APERTURE RECESSED FIXED LED DOWNLIGHT WITH SELF FLANGED TRIM AND NON-IC HOUSING WITH WIDE FLOOD BEAM	BRONZE VERIFY WITH ID	RECESSED	USAI B4RDF-24C3-30KH-90-S-BZ-BZ-NCSM-UNV-D6E	INTEGRAL LED BEAM: 90" CCT: 3000K CRI: 90 LUMENS: 1487	INTEGRAL	24	24	120/277V	0-10V	1%	FITNESS		INTEGRAL LED
F-D3W	4" ROUND APERTURE RECESSED FIXED LED DOWNLIGHT WITH SELF FLANGED TRIM AND NON-IC HOUSING WITH FLOOD BEAM	STANDARD	RECESSED	USAI P84R-30L3M-30KH-NCEC-UNV-D31-H5G RAP-T55-S-FINISH-TRM	INTEGRAL LED BEAM: 55" CCT: 2700K CRI: 90 LUMENS: 1559	INTEGRAL	20	20	120/277V	0-10V	1%	RESTROOM		INTEGRAL LED
F-L1	SURFACE MOUNTED LOW VOLTAGE LED LINEAR STRIP LIGHT WITH CHANNEL, FROSTED LENS, 100 DEGREE OPTIC, REMOTE ACCESSIBLE DIMMABLE DRIVER AND CONCEALED MOUNTING CLIPS	STANDARD	SURFACE	QTL VY1SW-4.0-30-4 DRY-STD-DF-WIRE INPUT/OUTPUT-CONNECTOR WIRE-IN CONNECTOR WIRE/OUT-WH-CL2-S5-LENGTH 0 DRIVER: QTM-ELED	INTEGRAL LED BEAM: 100" CCT: 000K CRI: 98 LUMENS: 240	REMOTE	4	4	120V PRIMARY/ 24V SECONDARY	0-10V	1%	FITNESS		INTEGRAL LED
F-DL1	DECORATIVE LUMINAIRE			REFER TO INTERIOR DESIGN F8AE PACKAGE FOR WEIGHT INFORMATION, LAMP/LIGHT SOURCE AND PARTIAL ELECTRICAL INFORMATION LISTED IN THIS SCHEDULE FOR COORDINATION			30	30	120V	T8D	1%	FITNESS RESTROOM		
F-LT144	FAN			REFER TO INTERIOR DESIGN F8AE PACKAGE FOR WEIGHT INFORMATION, LAMP/LIGHT SOURCE AND PARTIAL ELECTRICAL INFORMATION LISTED IN THIS SCHEDULE FOR COORDINATION					120V		NON-DIM	FITNESS		



NOT FOR CONSTRUCTION

1965 SKI TIME SQUARE DRIVE
STEAMBOAT SPRINGS, CO 80487

REVISIONS:		
NO	DATE	DESCRIPTION

PROJECT NUMBER:
123134.00

DATE:
07/03/25

ISSUED FOR:
PERMIT SET

SHEET TITLE:
LIGHTING FIXTURE SCHEDULE

SHEET NUMBER

LT-002

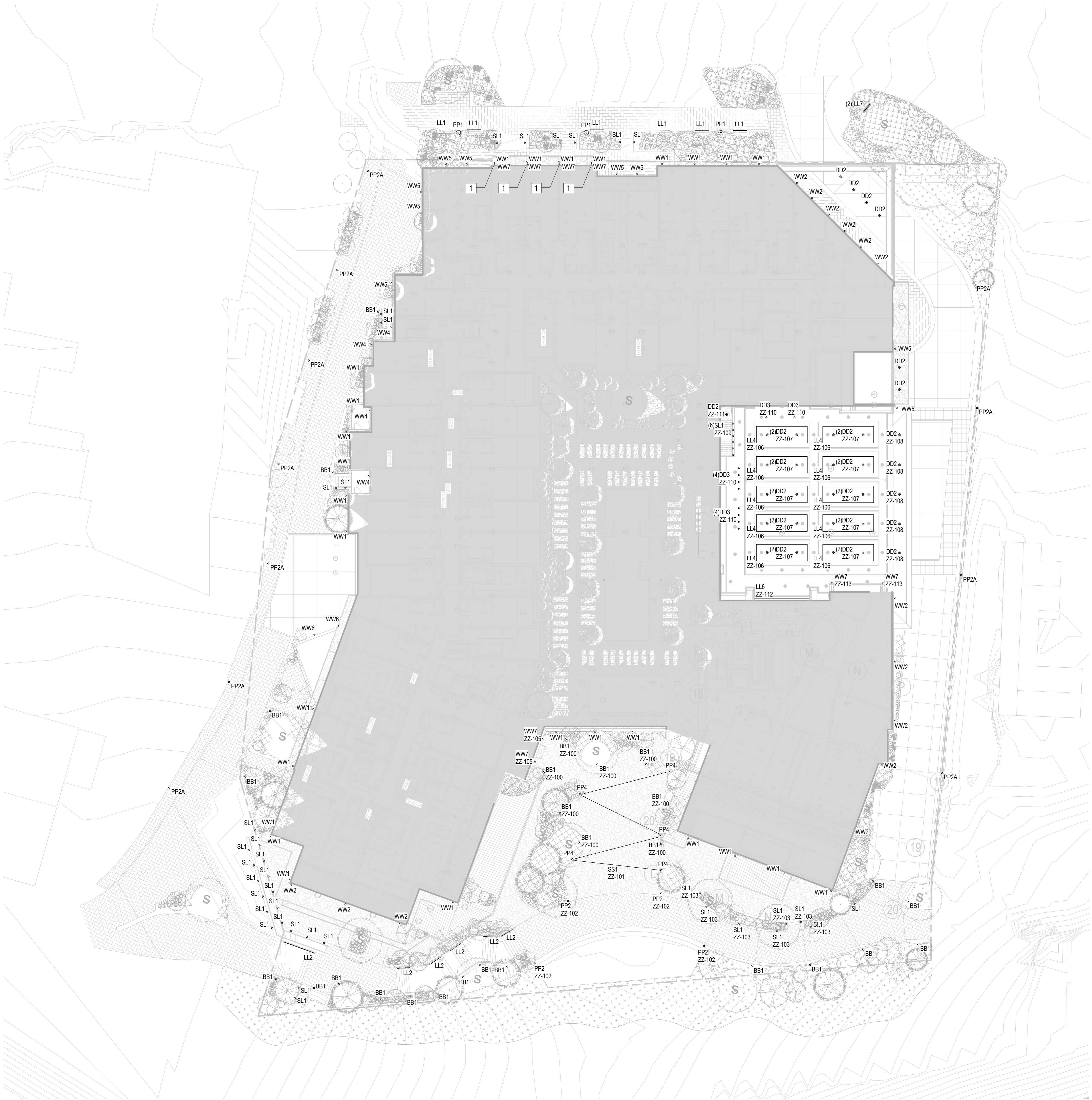
PROJECT NUMBER:
123134.00

DATE:
07/03/25

ISSUED FOR:
PERMIT SET

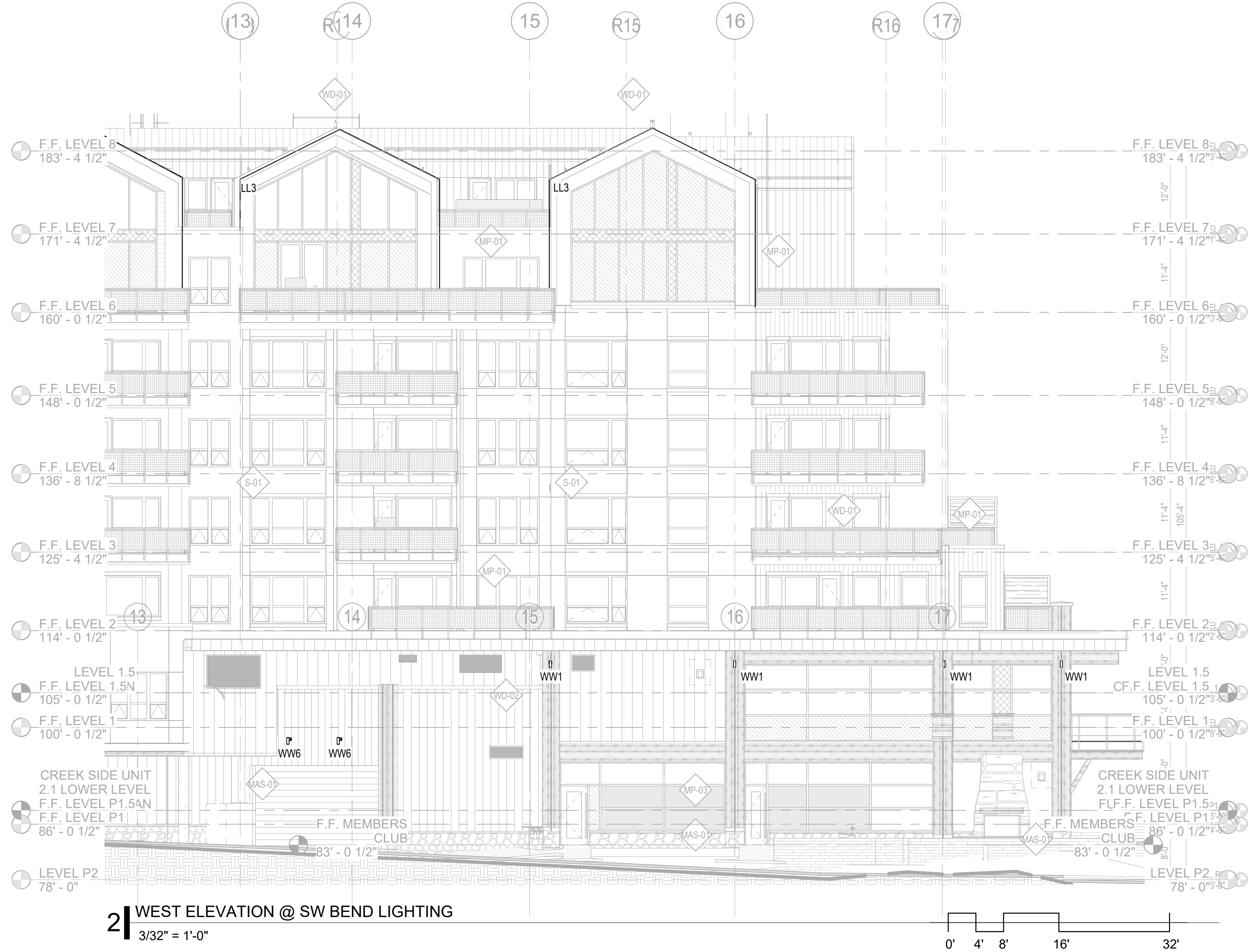
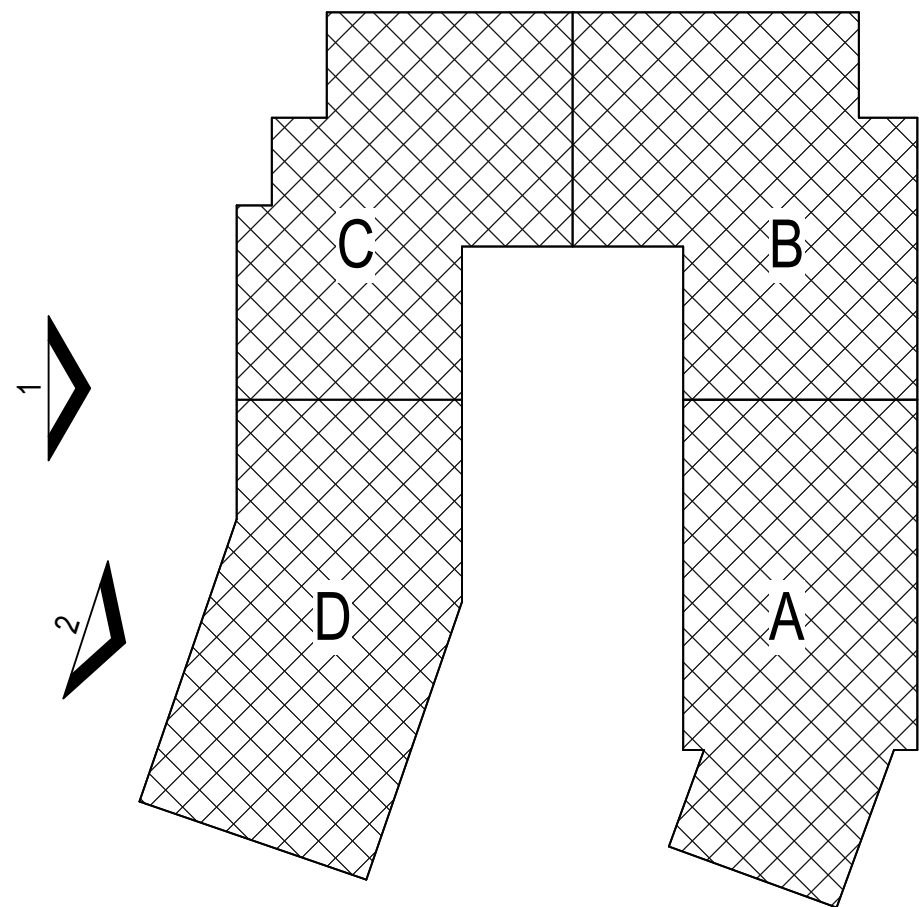
SHEET TITLE:
SITE LIGHTING PLAN

SHEET NUMBER
LT-050



1 SITE PLAN LIGHTING
3/64" = 1'-0"

KEY PLAN



2 WEST ELEVATION @ SW BEND LIGHTING
3/32" = 1'-0"

BUILDING ELEVATION NOTES

1. CONTROL JOINTS AND PANEL JOINTS TO ALIGN WITH OPENINGS AND PANEL JOINTS U.N.O.
2. INTAKE / EXHAUST VENTS TO BE ALIGNED WITH WINDOW OPENINGS AND PANEL JOINTS U.N.O. MAINTAIN 3'-0" MIN FROM OPERABLE OPENINGS.
3. REFER TO WALL SECTIONS AND PLANS FOR WALL TYPES.
4. REFER TO CIVIL PLANS FOR FINISHED GRADE ELEVATIONS.
5. COORDINATE LOCATION OF FDC AND KNOX BOX WITH FIRE DEPARTMENT AND ARCHITECT PRIOR TO INSTALL.
6. COORDINATE LOCATION OF EXTERIOR LIGHT FIXTURES WITH ARCHITECT.
7. REFER TO SHEET 80000 FOR MATERIAL TRANSITIONS
8. PAINT ALL EXPOSED MATERIALS NOT FACTORY FINISHED TO MATCH SURROUNDING WALL FINISH MATERIALS.

PROJECT FLAGNOTES

EXTERIOR MATERIALS LEGEND

- WD-01**
WOOD-LOOK SIDING
MFR. TRUE EXTERIOR
PRODUCT: REVERSIBLE SHIP-LAP NICKEL GAP
NAME / COLOR: CUSTOM FINISH
- WD-02**
NATURAL BARN WOOD SIDING
MFR. BARNWOOD
PRODUCT: ARTISAN SERIES (CEDAR) 1X6 LAP SIDING
NAME / COLOR: CUSTOM COLOR

- MAS-01**
NATURAL STONE MASONRY
MFR. GALLESSO
PRODUCT: NATURAL HIGHLANDS - LIMESTONE
NAME / COLOR: SEE ABOVE

- S-01**
STUCCO
MFR. TBD
PRODUCT: TUSCAN 3-PART SMOOTH FINISH W/ CONTROL JOINTS
NAME / COLOR: SAND GRAY TO MATCH ARCHITECT'S SAMPLE

- S-02**
STUCCO
MFR. TBD
PRODUCT: TUSCAN 3-PART SMOOTH FINISH W/ CONTROL JOINTS
NAME / COLOR: BROWN TO MATCH ARCHITECT'S SAMPLE

- MP-01**
METAL PANEL SIDING
MFR. PAC-CLAD - PETERSEN
PRODUCT: FLAT TILE - PRECISION SERIES TILE
NAME / COLOR: DARK BRONZE

- MP-02**
STANDING SEAM METAL ROOF/SIDING
MFR. MORIN CORP OR SIMILAR
PRODUCT: SLR-12-2
NAME / COLOR: DARK BRONZE TO MATCH ARCHITECT'S SAMPLE

- MP-03**
CORTEN METAL PANEL SIDING
MFR. MORIN CORP OR SIMILAR
PRODUCT: 18" PANEL
NAME / COLOR: 22 GAUGE

- TYPICAL WINDOWS**
MFR. SIERRA PACIFIC
PRODUCT: ASPEN 2.0 & DIRECT GLAZE
NAME / COLOR: DARK BRONZE - LOW E-366 W/ DOUBLE PANE GLASS

- STOREFRONT**
MFR. ERCO
PRODUCT: 403X & 590X WITH APPLIED COMPRESSION PROFILES
NAME / COLOR: ANODIZED DARK BRONZE

- WOOD TRIM & CLADDING ON EXPOSED STRUCTURE**
MFR. TBD
PRODUCT: SEALED NATURAL WOOD & CLADDING WRAPPED STRUCTURE WHERE SPECIFIED
NAME / COLOR: CUSTOM STAIN

- METAL TRIM, RAILINGS, & EXPOSED STRUCTURE**
MFR. CUSTOM STEEL FABRICATION
PRODUCT: 2" X 1/4" SQUARE-STOCK WELDED PICKETS OR GLASS PANEL WITH PREFINISHED ALUMINUM METAL FRAME. SEE ELEVATIONS FOR LOCATIONS OF EACH
NAME / COLOR: DARK BRONZE



1 WEST OVERALL BUILDING ELEVATION LIGHTING
3/32" = 1'-0"



NOT FOR CONSTRUCTION

1965 SKI TIME SQUARE DRIVE
STEAMBOAT SPRINGS, CO 80487

REVISIONS:		
NO	DATE	DESCRIPTION

PROJECT NUMBER:
123134.00

DATE:
07/03/25

ISSUED FOR:
PERMIT SET

SHEET TITLE:
BUILDING ELEVATIONS - WEST

SHEET NUMBER

LT-204