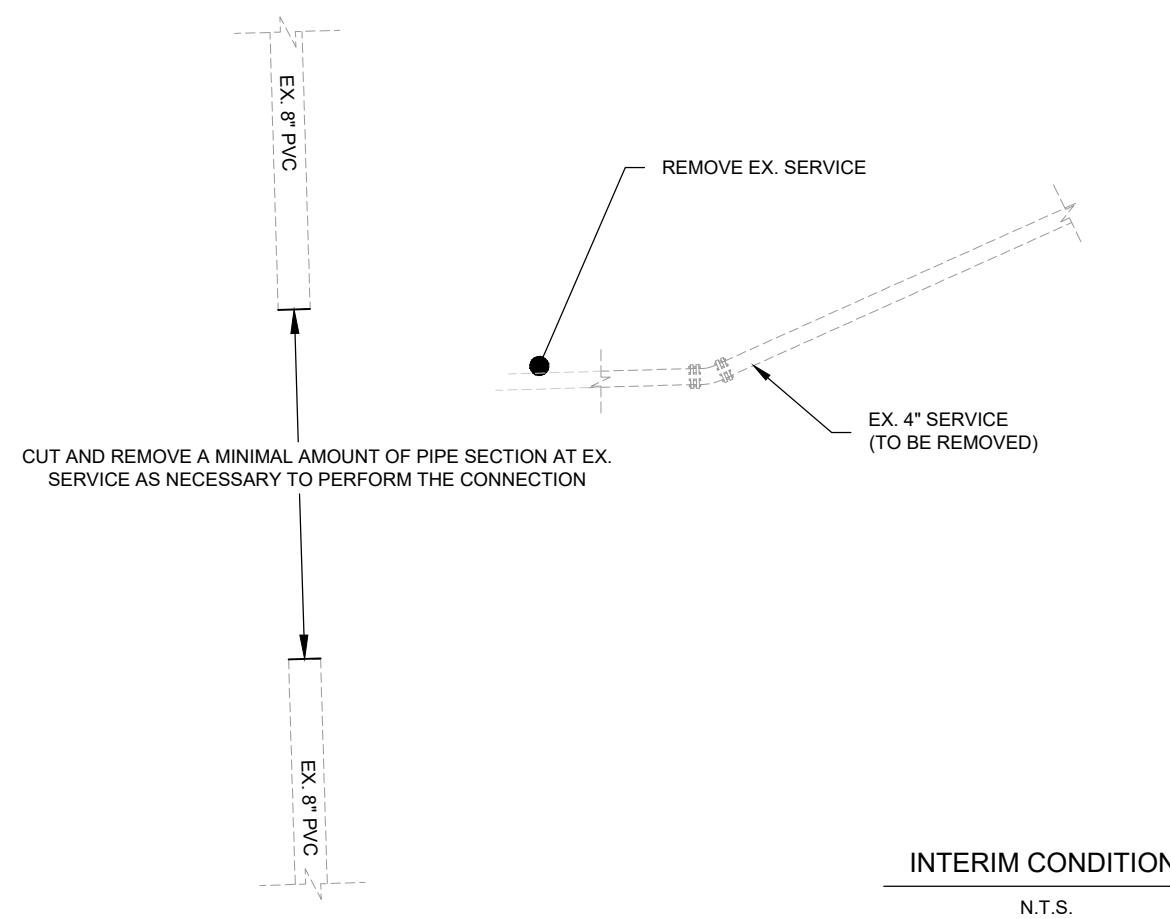
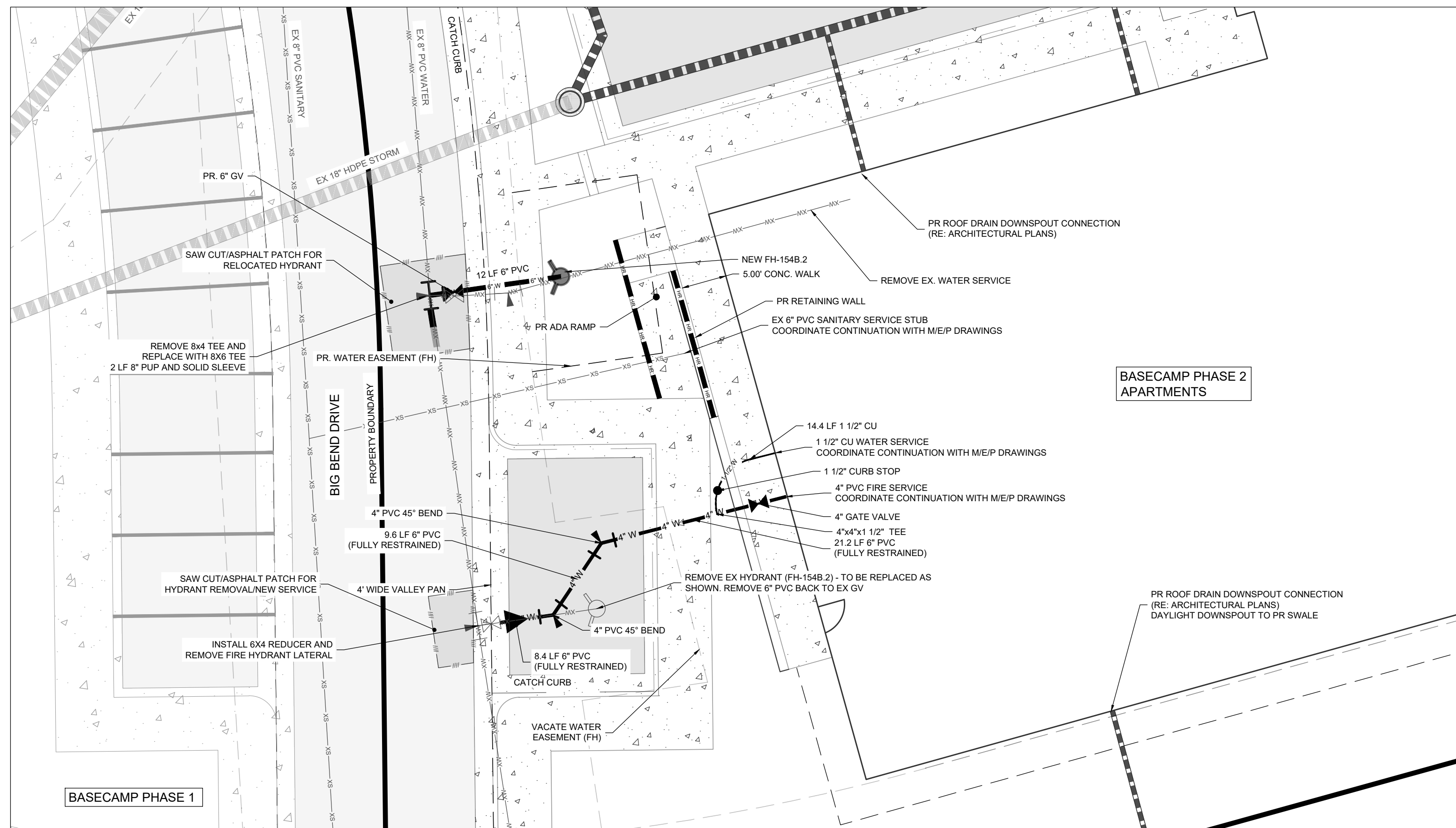
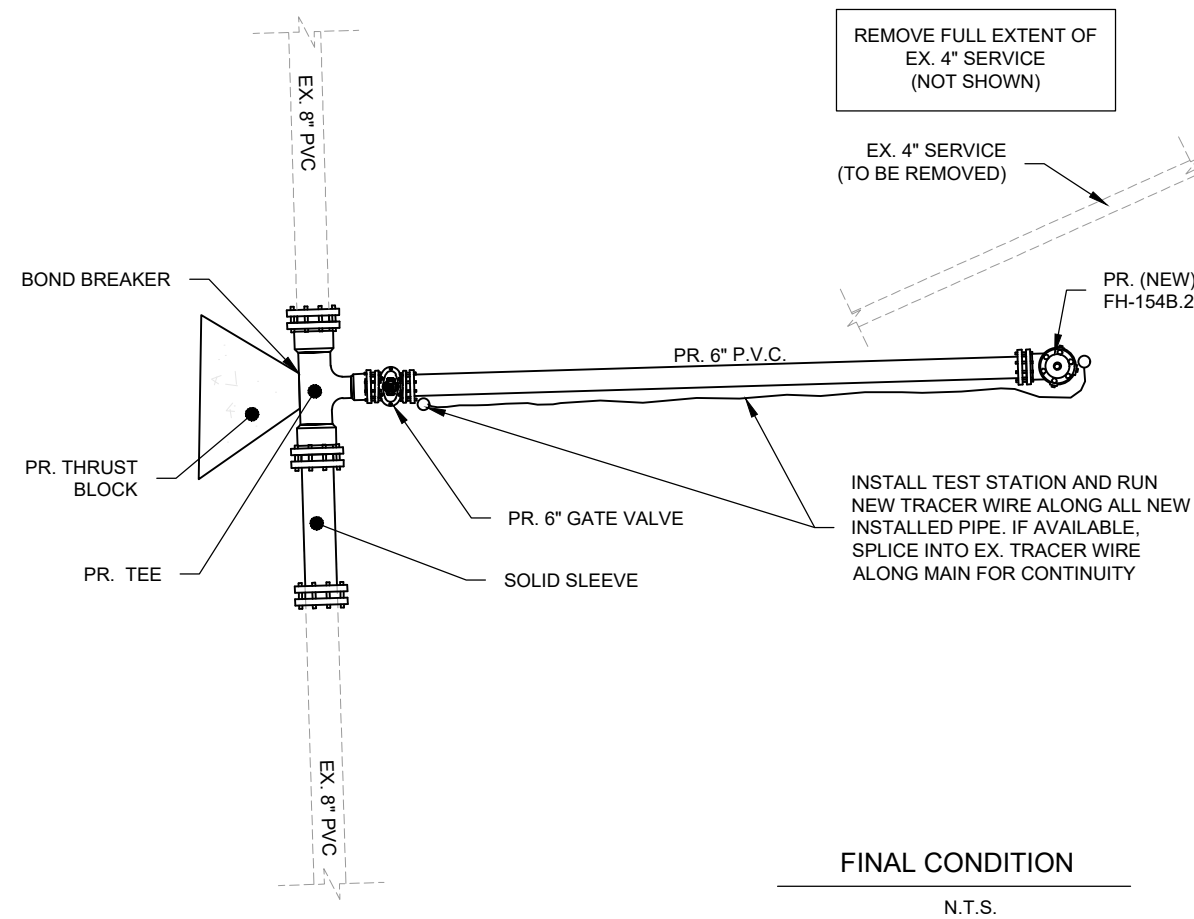


PIPE PREPARATION

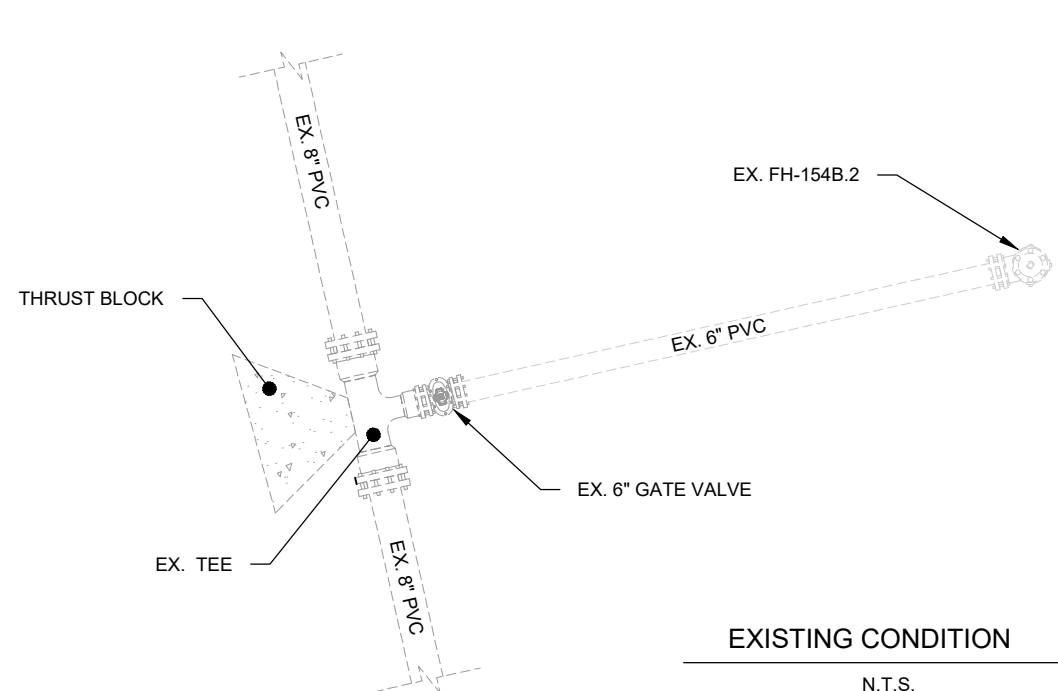
1. CONFIRM CONNECTION LOCATION WITH SURVEYOR AND ENGINEER;
2. CUT EXISTING PIPE IN A MANNER THAT MINIMIZES THE REMOVAL LENGTH OF PIPE;
3. BEVEL AND REMOVE ALL BURS FOR A CLEAN CONNECTION;



<p><u>CONNECTION COMPLETION</u></p> <ol style="list-style-type: none"> 1. PRE-ASSEMBLE FITTINGS OUTSIDE OF TRENCH TO THE EXTENT PRACTICABLE; 2. DISINFECT INTERIOR OF FITTINGS PER SPECIFICATIONS IN THE PRESENCE OF ENGINEER; 3. REFER TO WATER DISTRICT SPECIFICATIONS AND DETAILS FOR FINAL REQUIREMENTS
--



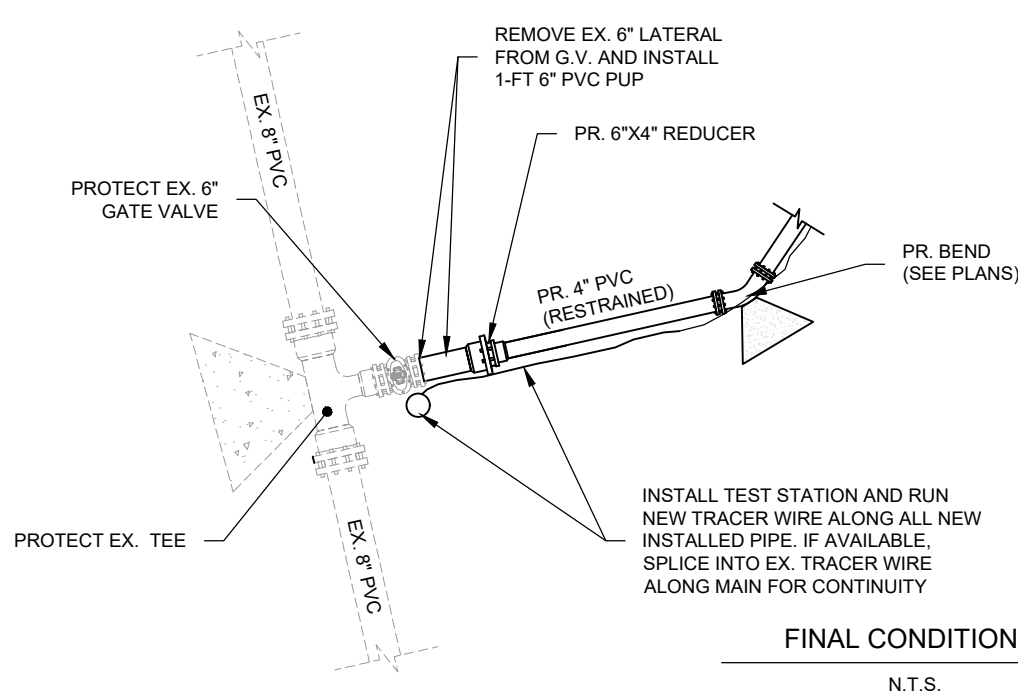
INITIAL EXCAVATION
1. ENSURE ALL APPROVALS AND PERMITS ARE IN PLACE PRIOR TO MOBILIZATION;
2. COORDINATE ALL EXCAVATION ACTIVITIES WITH UTILITY LOCATES AND NOTIFICATIONS;
3. COORDINATE SCHEDULE AND OPERATIONS WITH ENGINEER AND CITY OF STEAMBOAT SPRINGS UTILITIES PRIOR TO EXCAVATION, INCLUDING NOTIFICATIONS FOR SERVICE DISRUPTION AND SYSTEM ISOLATION;
4. CAREFULLY EXPOSE EXISTING PIPE AND CONFIRM MATERIAL AND SIZE;
5. CONSTRUCTION DEWATERING SHALL CONFORM TO ALL PERMIT REQUIREMENTS.



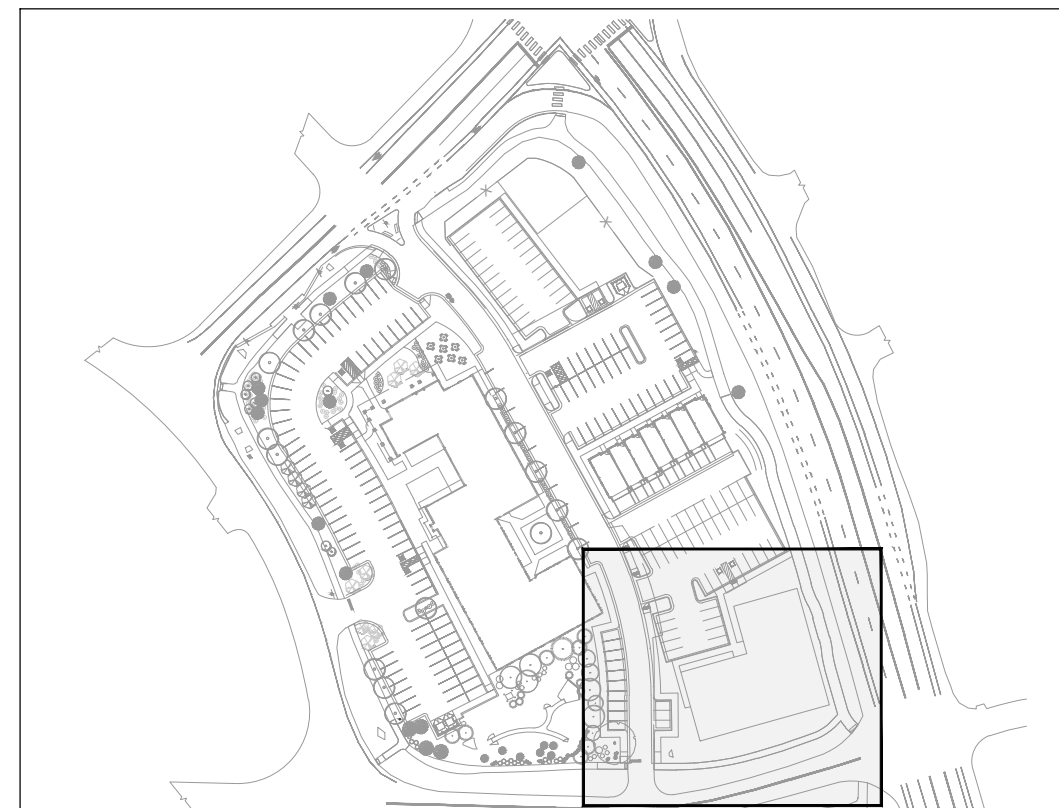
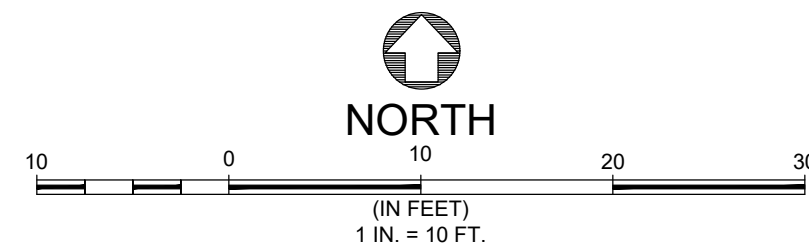
PIPE PREPARATION	
1.	CONFIRM CONNECTION LOCATION WITH SURVEYOR AND ENGINEER.
2.	CONFIRM DE-PRESSURIZATION OF SYSTEM;
3.	REMOVE EX. PIPE AND HYDRANT AND DISPOSE.

PIPE AND HYDRANT INSTALLATION

4. PRE-ASSEMBLE FITTINGS OUTSIDE OF TRENCH TO THE EXTENT PRACTICABLE;
5. DISINFECT INTERIOR OF FITTINGS PER SPECIFICATIONS IN THE PRESENCE OF ENGINEER
6. REFER TO CITY OF STEAMBOAT SPRINGS UTILITIES INSTALLATION OF NEW PIPE AND FIRE HYDRANT.
7. PERFORM ALL QUALITY ASSURANCE TESTING INCLUDING DISINFECTION, BACTERIOLOGICAL AND LEAKAGE TESTS IN PRESENCE OF ENGINEER.



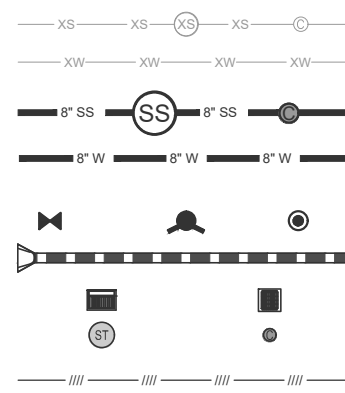
LOT 3 F.H. REMOVAL AND NEW WATER SERVICE EXHIBIT
(NOT INTENDED TO DICTATE CONTRACTOR MEANS & METHODS)



KEY MAP
NOT TO SCALE

UTILITY PLAN LEGEND:

- EXISTING SANITARY SEWER W/ MH & C.O.
EXISTING WATER
PROPOSED #\"/>



NOTES:

1. THE SIZE, TYPE AND LOCATION OF ALL KNOWN UNDERGROUND UTILITIES ARE APPROXIMATE WHEN SHOWN ON THESE DRAWINGS. IT SHALL BE THE RESPONSIBILITY OF THE CONTRACTOR TO VERIFY THE EXISTENCE OF ALL UNDERGROUND UTILITIES IN THE AREA OF THE WORK. BEFORE COMMENCING NEW CONSTRUCTION, THE CONTRACTOR SHALL BE RESPONSIBLE FOR LOCATING ALL UNDERGROUND UTILITIES AND SHALL BE RESPONSIBLE FOR ALL UNKNOWN UNDERGROUND UTILITIES.
2. EXISTING UNDERGROUND AND OVERHEAD PUBLIC AND PRIVATE UTILITIES AS SHOWN ARE INDICATED ACCORDING TO THE BEST INFORMATION MADE AVAILABLE TO THE ENGINEER. THE ENGINEER DOES NOT GUARANTEE NOR IS RESPONSIBLE FOR THE ACCURACY OF SUCH INFORMATION. THE EXISTENCE OF ANY UNDERGROUND UTILITIES NOT BEING STRAIGHT LINES OR AS INDICATED ON THESE DRAWINGS, CONTRACTOR TO VERIFY EXISTING HORIZONTAL AND VERTICAL LOCATIONS PRIOR TO CONSTRUCTION.
3. ALL SEWER AND WATER CONSTRUCTION SHALL BE PER THE CITY OF STEAMBOAT SPRINGS STANDARD SPECIFICATIONS, LATEST EDITION.
4. MAINTAIN 10' HORIZONTAL AND 18" VERTICAL MINIMUM SEPARATION BETWEEN ALL SANITARY SEWER MAINS, WATER MAINS AND GAS LINES.
5. MANHOLES LOCATED OUTSIDE OF THE ROADWAY SHALL PROTRUDE 1' ABOVE EXISTING GRADE TO REDUCE INFILTRATION. GRADE SURFACE TO DRAIN AROUND/ABOUT FROM MANHOLE RIMS.
6. ALL MANHOLES LOCATED IN THE ROADWAY SHALL HAVE RIM ELEVATIONS ADJUSTED TO 1" BELOW FINISHED GRADE. IF NECESSARY, CONE SECTIONS SHALL BE ROTATED TO PREVENT LIDS BEING LOCATED WITHIN VEHICLE OR BICYCLE WHEEL PATHS.
7. SEWER SERVICE SHALL HAVE A MINIMUM OF 4'-FT OF COVER.
8. WATER SERVICE SHALL HAVE A MINIMUM OF 7'-FT OF COVER.
9. ALL WATER PIPE SHALL BE INSTALLED WITH A #10 SOLID COPPER WIRE COATED WITH 45 MIL POLYETHYLENE FOR LOCATING PURPOSES. "GLENN TEST" STATIONS* BY VALVCO, INC TRACER WIRE TEST STATIONS SHALL BE INSTALLED ADJACENT TO ALL FIRE HYDRANTS. ADDITIONAL LOCATIONS MAY BE REQUIRED.
10. ALL MATERIALS USED FOR BACKFILL SHALL BE FREE FROM REFUSE, ORGANIC MATERIAL, CEMENT, BRICKS, BOLDERS, LARGE ROCKS OR STONES OR FROZEN SOLS GREATER THAN 6-INCHES IN DIAMETER.
11. TRENCHES SHALL BE COMPACTED TO 85% OR BETTER BY ASTM D698 (STANDARD PROCTOR) OR AS SPECIFIED BY GEOTECHNICAL ENGINEER.
12. ALL WATER MAINS AND SERVICES (4-INCHES AND LARGER DIAMETER) SHALL BE PVC, NOT D.I.P.
13. THIS DRAWING SHALL NOT TO BE USED FOR CONSTRUCTION OR CONTRACTING PURPOSES.



CALL UTILITY NOTIFICATION CENTER OF
COLORADO

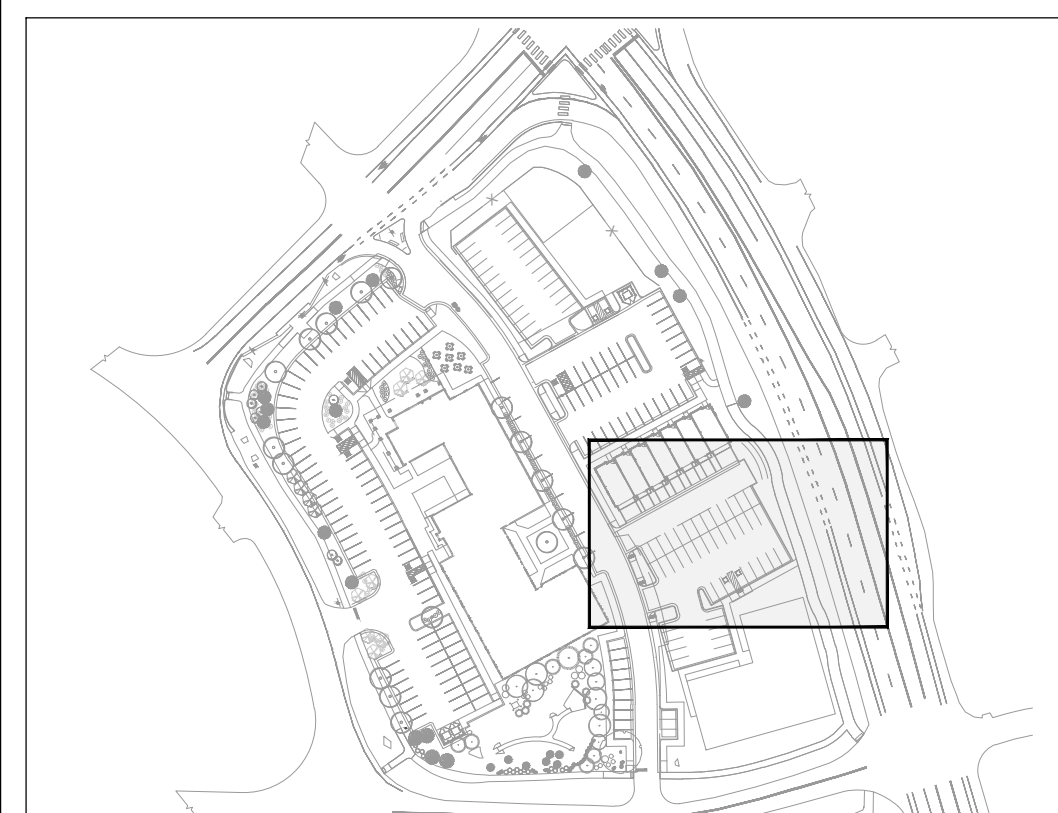


Know what's below.
Call before you dig

CALL 2 BUSINESS DAYS IN ADVANCE BEFORE YOU DIG, GRADE, OR EXCAVATE FOR THE MARKING OF UNDERGROUND MEMBER UTILITIES.

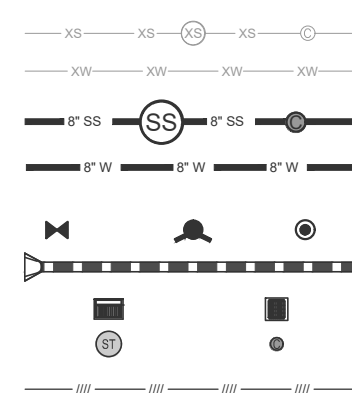
NO.	DATE:	BY:	DESCRIPTION:
1	9/8/25	EG	Addressed DRT
2	10/10/25	EG	Rev. Lot 2, Misc

PROJECT:	2387-008
DATE:	10/10/25
CONTACT:	Erik Griepentrog
EMAIL:	erikg@landmark-co.com

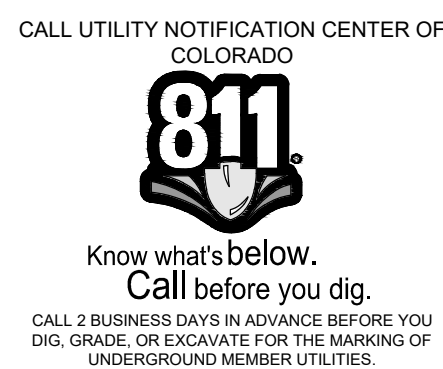


KEY MAP
NOT TO SCALE

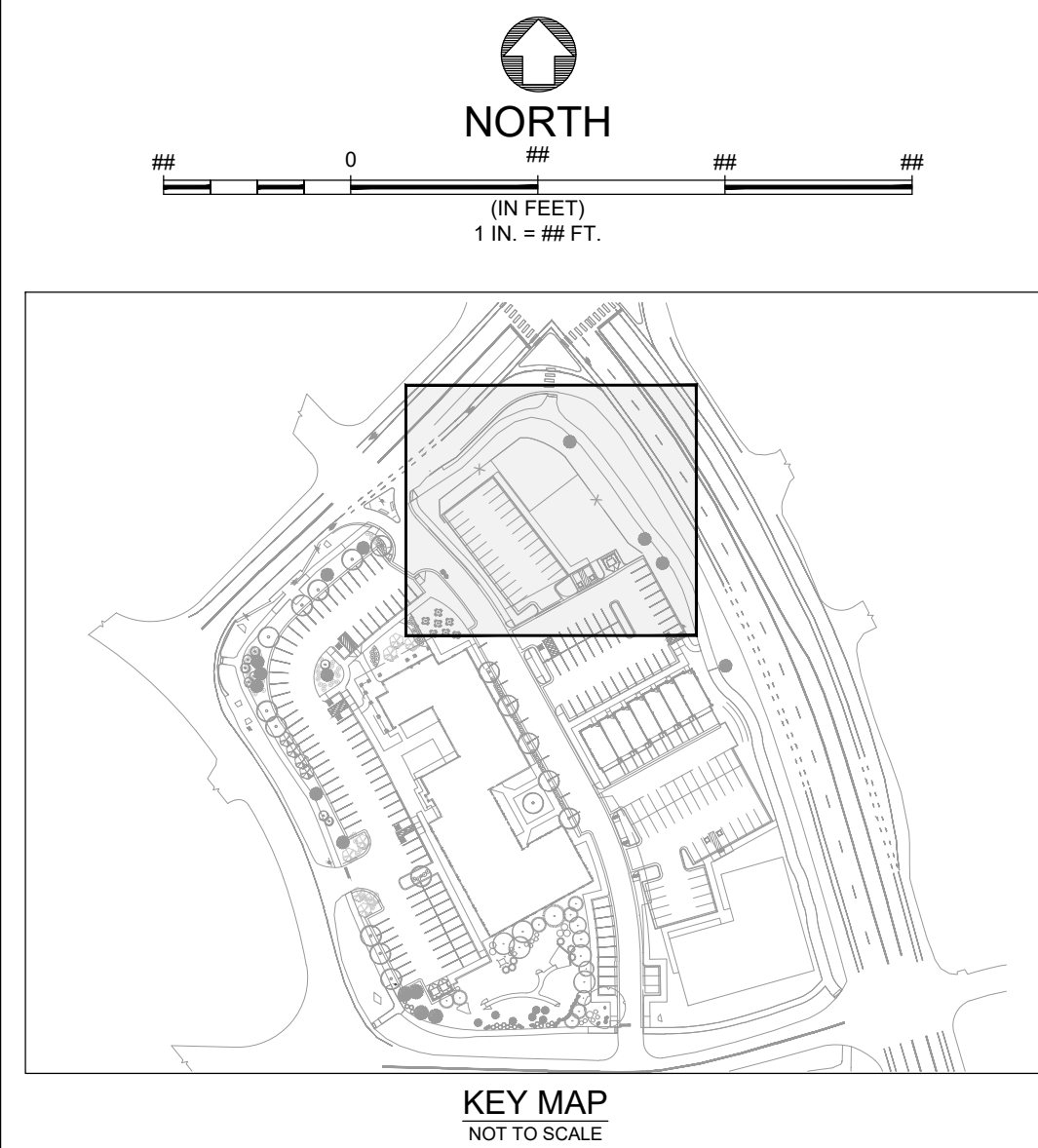
EXISTING SANITARY SEWER W/ MH & C.O.
EXISTING WATER
PROPOSED 8" SANITARY SEWER W/ MH & C.O.
PROPOSED 8" WATER PIPE



1. THE SIZE, TYPE AND LOCATION OF ALL KNOWN UNDERGROUND UTILITIES ARE APPROXIMATE WHEN SHOWN ON THESE DRAWINGS. IT SHALL BE THE RESPONSIBILITY OF THE CONTRACTOR TO VERIFY THE EXISTENCE OF ALL UNDERGROUND UTILITIES IN THE AREA OF THE WORK. BEFORE ANY NEW OR EXISTING UTILITY IS LOCATED, THE CONTRACTOR SHALL BE RESPONSIBLE FOR LOCATING ALL UNDERGROUND UTILITIES AND SHALL BE RESPONSIBLE FOR ALL UNKNOWN UNDERGROUND UTILITIES.
2. EXISTING UNDERGROUND AND OVERHEAD PUBLIC AND PRIVATE UTILITIES AS SHOWN ARE LOCATED ACCORDING TO THE BEST INFORMATION MADE AVAILABLE TO THE ENGINEER. THE ENGINEER DOES NOT GUARANTEE NOR IS RESPONSIBLE FOR THE ACCURACY OF SUCH INFORMATION. EXISTING UTILITY MAINS AND SERVICES MAY NOT BE STRAIGHT LINES OR AS SHOWN ON THESE DRAWINGS. THE CONTRACTOR TO VERIFY EXISTING HORIZONTAL AND VERTICAL LOCATIONS PRIOR TO CONSTRUCTION.
3. ALL SEWER AND WATER CONSTRUCTION SHALL BE PER THE CITY OF STEAMBOAT SPRINGS STANDARD SPECIFICATIONS, LATEST EDITION.
4. MAINTAIN 10' HORIZONTAL AND 18" VERTICAL MINIMUM SEPARATION BETWEEN ALL SANITARY SEWER MAINS, WATER MAINS & SERVICES.
5. MANHOLES LOCATED OUTSIDE OF THE ROADWAY SHALL PROTRUDE 1' ABOVE EXISTING GRADE TO REDUCE INFILTRATION. GRADE SURFACE TO DRAIN AROUND FROM MANHOLE RIMS.
6. ALL MANHOLES LOCATED IN THE ROADWAY SHALL HAVE RIM ELEVATIONS ADJUSTED TO 12" BELOW FINISH GRADE. ALL MANHOLE CROSS SECTIONS SHALL BE ROTATED TO PREVENT LIDS BEING LOCATED WITHIN VEHICLE OR BICYCLE WHEEL PATHS.
7. SEWER SERVICE SHALL HAVE A MINIMUM OF 4' OF COVER.
8. WATER SERVICE SHALL HAVE A MINIMUM OF 7' OF COVER.
9. ALL WATER PIPE SHALL BE INSTALLED WITH A #10 SOLID COPPER PIPE COATED WITH 45 MIL POLYETHYLENE FOR LEAKING PROTECTION. "CLEAN TEST" STATIONS AT VALVE/CUT IN, TRACER, WIRE TEST STATIONS SHALL BE INSTALLED ADJACENT TO ALL FIRE HYDRANTS. ADDITIONAL LOCATIONS MAY BE REQUIRED.
11. ALL TRENCHES SHALL BE COMPACTED TO 95% AS DETERMINED BY ASTM D698 (STANDARD PROCTOR) OR AS SPECIFIED BY GEOTECHNICAL ENGINEER.
12. ALL WATER MAINS AND SERVICES (4-INCHES AND LARGER DIAMETER) SHALL BE P.V.C. NOT D.I.P.
13. THIS DRAWING SHALL NOT TO BE USED FOR CONSTRUCTION OR CONTRACTING PURPOSES.



SEE SHEET C.200



EXISTING SANITARY SEWER W/ MH & C.O.

EXISTING WATER

PROPOSED 18" SANITARY SEWER W/ MH & C.O.

PROPOSED 18" WATER PIPE

PROPOSED GV, FH & CS

PROPOSED STORM SEWER W/ FLARED END SECTION

PROPOSED STORM INLET (CURB & AREA)

PROPOSED STORM MANHOLE & CLEANOUT

APPROX. PAVEMENT SAW CUT


1. THE SIZE, TYPE AND LOCATION OF ALL KNOWN UNDERGROUND UTILITIES ARE APPROXIMATE WHEN SHOWN ON THESE DRAWINGS. IT SHALL BE THE RESPONSIBILITY OF THE CONTRACTOR TO VERIFY THE LOCATION AND DEPTH OF ALL KNOWN UNDERGROUND UTILITIES IN THE AREA OF THE WORK. BEFORE COMMENCING NEW CONSTRUCTION, THE CONTRACTOR SHALL BE RESPONSIBLE FOR LOCATING ALL UNDERGROUND UTILITIES AND SHALL BE RESPONSIBLE FOR ALL UNKNOWN UNDERGROUND UTILITIES.
2. EXISTING UNDERGROUND AND OVERHEAD PUBLIC AND PRIVATE UTILITIES AS SHOWN ARE INDICATED ACCORDING TO THE BEST INFORMATION MADE AVAILABLE TO THE ENGINEER. THE ENGINEER DOES NOT GUARANTEE NOR IS RESPONSIBLE FOR THE ACCURACY OF SUCH INFORMATION. THE CONTRACTOR SHALL BE RESPONSIBLE TO VERIFY THE LOCATION AND DEPTH OF ALL KNOWN UNDERGROUND UTILITIES AND SHALL BE RESPONSIBLE FOR ALL UNKNOWN UNDERGROUND UTILITIES AS INDICATED ON THESE DRAWINGS. CONTRACTOR TO VERIFY EXISTING HORIZONTAL AND VERTICAL LOCATIONS PRIOR TO CONSTRUCTION.
3. ALL SEWER AND WATER CONSTRUCTION SHALL BE PER THE CITY OF STEAMBOAT SPRINGS STANDARD SPECIFICATIONS, LATEST EDITION.
4. MAINTAIN 10' HORIZONTAL AND 18" VERTICAL MINIMUM SEPARATION BETWEEN ALL SANITARY SEWER MAINS, WATER MAINS & SERVICES.
5. MANHOLES LOCATED OUTSIDE OF THE ROADWAY SHALL PROVIDE A ABOVE EXISTING GRADE TO REDUCE INTRUSION. GRADE SURFACE TO DRAIN AWAYFROM FROM MANHOLE RIMS.
6. ALL MANHOLES LOCATED IN THE ROADWAY SHALL HAVE RIM ELEVATIONS ADJUSTED TO 1" BELOW FINISHED GRADE. IF NECESSARY, CONE SECTIONS SHALL BE ROTATED TO PREVENT LIDS BEING LOCATED WITHIN VEHICLE OR BICYCLE WHEEL PATHS.
7. SEWER SERVICE SHALL HAVE A MINIMUM OF 4'-FT OF COVER.
8. WATER SERVICE SHALL HAVE A MINIMUM OF 7'-FT OF COVER.
9. ALL WATER PIPE SHALL BE INSTALLED WITH A #10 SOLID COPPER WIRE COATED WITH 45 MIL POLYETHYLENE FOR LOCATING PURPOSES. "GLENN TEST STATIONS" BY VALVICO, INC TRACER WIRE TEST STATIONS SHALL BE INSTALLED ADJACENT TO ALL FIRE HYDRANTS. ADDITIONAL LOCATIONS MAY BE REQUIRED.
10. ALL MATERIALS USED FOR BACKFILL SHALL BE FREE FROM REFUSE, ORGANIC MATERIAL, CURBS, BOLLERS, LARGE ROCKS OR STONES OR FROZEN SOLIDS GREATER THAN 6-INCHES IN DIAMETER.
11. TRENCHES SHALL BE COMPACTED 85% AS DETERMINED BY ASTM D698 (STANDARD PROCTOR) OR AS SPECIFIED BY GEO/TECHNICAL ENGINEER.
12. ALL WATER MAINS AND SERVICES (4-INCHES AND LARGER DIAMETER) SHALL BE PVC, NOT D.I.P.
13. THIS DRAWING SHALL NOT TO BE USED FOR CONSTRUCTION OR CONTRACTING PURPOSES.

NO.	DATE	BY:	DESCRIPTION:
1	9/8/25	EG	Addressed DRT Comments
2	10/10/25	EG	Rev. Lot 2, MISC

Basecamp Phase 2 Apartments
Lot 2
Water and Sewer Plan



CALL UTILITY NOTIFICATION CENTER OF
COLORADO



Know what's below.
Call before you dig.

CALL 2 BUSINESS DAYS IN ADVANCE BEFORE YOU
DIG, GRADE, OR EXCAVATE FOR THE MARKING OF
UNDERGROUND MEMBER UTILITIES.

SHEET

C.202

EXISTING CONDITION

N.T.S.

INITIAL EXCAVATION

1. ENSURE ALL APPROVALS AND PERMITS ARE IN PLACE PRIOR TO MOBILIZATION;
2. COORDINATE ALL EXCAVATION ACTIVITIES WITH UTILITY LOCATES AND NOTIFICATIONS;
3. COORDINATE SCHEDULE AND OPERATIONS WITH ENGINEER AND WATER DISTRICT PRIOR TO EXCAVATION, INCLUDING NOTIFICATIONS FOR SERVICE DISRUPTION AND SYSTEM ISOLATION;
4. CAREFULLY EXPOSE EXISTING PIPE AND CONFIRM MATERIAL AND SIZE;
5. CONSTRUCTION DEWATERING SHALL CONFORM TO ALL PERMIT REQUIREMENTS.

INTERIM CONDITION

N.T.S.

PIPE PREPARATION

1. CONFIRM CONNECTION LOCATION WITH SURVEYOR AND ENGINEER;
2. CUT EXISTING PIPE IN A MANNER THAT MINIMIZES THE REMOVAL LENGTH OF PIPE;
3. BEVEL AND REMOVE ALL BURS FOR A CLEAN CONNECTION.

FINAL CONDITION

N.T.S.

CONNECTION COMPLETION

1. PRE-ASSEMBLE FITTINGS OUTSIDE OF TRENCH TO THE EXTENT PRACTICABLE;
2. DISINFECT INTERIOR OF FITTINGS IN THE PRESENCE OF ENGINEER;
3. REFER TO WATER DISTRICT SPECIFICATIONS AND DETAILS FOR FINAL REQUIREMENTS.

DRAWING FILENAME: P:\3287-008\DWG\Production Drawings\Development Plan\3287-008-P-C100 - Water and Sewer Plan.dwg LAYOUT NAME: C202 DATE: Oct 13, 2025 7:46am CAD OPERATOR: Elk
LIST OF XREFS: 3287-008-101[3287-008-101.dwg] 3287-008-102[3287-008-102.dwg] 3287-008-103[3287-008-103.dwg] 3287-008-104[3287-008-104.dwg] 3287-008-105[3287-008-105.dwg] 3287-008-106[3287-008-106.dwg] 3287-008-107[3287-008-107.dwg] 3287-008-108[3287-008-108.dwg] 3287-008-109[3287-008-109.dwg] 3287-008-110[3287-008-110.dwg] 3287-008-111[3287-008-111.dwg] 3287-008-112[3287-008-112.dwg] 3287-008-113[3287-008-113.dwg] 3287-008-114[3287-008-114.dwg] 3287-008-115[3287-008-115.dwg] 3287-008-116[3287-008-116.dwg] 3287-008-117[3287-008-117.dwg] 3287-008-118[3287-008-118.dwg] 3287-008-119[3287-008-119.dwg] 3287-008-120[3287-008-120.dwg] 3287-008-121[3287-008-121.dwg] 3287-008-122[3287-008-122.dwg] 3287-008-123[3287-008-123.dwg] 3287-008-124[3287-008-124.dwg] 3287-008-125[3287-008-125.dwg] 3287-008-126[3287-008-126.dwg] 3287-008-127[3287-008-127.dwg] 3287-008-128[3287-008-128.dwg] 3287-008-129[3287-008-129.dwg] 3287-008-130[3287-008-130.dwg] 3287-008-131[3287-008-131.dwg] 3287-008-132[3287-008-132.dwg] 3287-008-133[3287-008-133.dwg] 3287-008-134[3287-008-134.dwg] 3287-008-135[3287-008-135.dwg] 3287-008-136[3287-008-136.dwg] 3287-008-137[3287-008-137.dwg] 3287-008-138[3287-008-138.dwg] 3287-008-139[3287-008-139.dwg] 3287-008-140[3287-008-140.dwg] 3287-008-141[3287-008-141.dwg] 3287-008-142[3287-008-142.dwg] 3287-008-143[3287-008-143.dwg] 3287-008-144[3287-008-144.dwg] 3287-008-145[3287-008-145.dwg] 3287-008-146[3287-008-146.dwg] 3287-008-147[3287-008-147.dwg] 3287-008-148[3287-008-148.dwg] 3287-008-149[3287-008-149.dwg] 3287-008-150[3287-008-150.dwg] 3287-008-151[3287-008-151.dwg] 3287-008-152[3287-008-152.dwg] 3287-008-153[3287-008-153.dwg] 3287-008-154[3287-008-154.dwg] 3287-008-155[3287-008-155.dwg] 3287-008-156[3287-008-156.dwg] 3287-008-157[3287-008-157.dwg] 3287-008-158[3287-008-158.dwg] 3287-008-159[3287-008-159.dwg] 3287-008-160[3287-008-160.dwg] 3287-008-161[3287-008-161.dwg] 3287-008-162[3287-008-162.dwg] 3287-008-163[3287-008-163.dwg] 3287-008-164[3287-008-164.dwg] 3287-008-165[3287-008-165.dwg] 3287-008-166[3287-008-166.dwg] 3287-008-167[3287-008-167.dwg] 3287-008-168[3287-008-168.dwg] 3287-008-169[3287-008-169.dwg] 3287-008-170[3287-008-170.dwg] 3287-008-171[3287-008-171.dwg] 3287-008-172[3287-008-172.dwg] 3287-008-173[3287-008-173.dwg] 3287-008-174[3287-008-174.dwg] 3287-008-175[3287-008-175.dwg] 3287-008-176[3287-008-176.dwg] 3287-008-177[3287-008-177.dwg] 3287-008-178[3287-008-178.dwg] 3287-008-179[3287-008-179.dwg] 3287-008-180[3287-008-180.dwg] 3287-008-181[3287-008-181.dwg] 3287-008-182[3287-008-182.dwg] 3287-008-183[3287-008-183.dwg] 3287-008-184[3287-008-184.dwg] 3287-008-185[3287-008-185.dwg] 3287-008-186[3287-008-186.dwg] 3287-008-187[3287-008-187.dwg] 3287-008-188[3287-008-188.dwg] 3287-008-189[3287-008-189.dwg] 3287-008-190[3287-008-190.dwg] 3287-008-191[3287-008-191.dwg] 3287-008-192[3287-008-192.dwg] 3287-008-193[3287-008-193.dwg] 3287-008-194[3287-008-194.dwg] 3287-008-195[3287-008-195.dwg] 3287-008-196[3287-008-196.dwg] 3287-008-197[3287-008-197.dwg] 3287-008-198[3287-008-198.dwg] 3287-008-199[3287-008-199.dwg] 3287-008-200[3287-008-200.dwg] 3287-008-201[3287-008-201.dwg] 3287-008-202[3287-008-202.dwg] 3287-008-203[3287-008-203.dwg] 3287-008-204[3287-008-204.dwg] 3287-008-205[3287-008-205.dwg] 3287-008-206[3287-008-206.dwg] 3287-008-207[3287-008-207.dwg] 3287-008-208[3287-008-208.dwg] 3287-008-209[3287-008-209.dwg] 3287-008-210[3287-008-210.dwg] 3287-008-211[3287-008-211.dwg] 3287-008-212[3287-008-212.dwg] 3287-008-213[3287-008-213.dwg] 3287-008-214[3287-008-214.dwg] 3287-008-215[3287-008-215.dwg] 3287-008-216[3287-008-216.dwg] 3287-008-217[3287-008-217.dwg] 3287-008-218[3287-008-218.dwg] 3287-008-219[3287-008-219.dwg] 3287-008-220[3287-008-220.dwg] 3287-008-221[3287-008-221.dwg] 3287-008-222[3287-008-222.dwg] 3287-008-223[3287-008-223.dwg] 3287-008-224[3287-008-224.dwg] 3287-008-225[3287-008-225.dwg] 3287-008-226[3287-008-226.dwg] 3287-008-227[3287-008-227.dwg] 3287-008-228[3287-008-228.dwg] 3287-008-229[3287-008-229.dwg] 3287-008-230[3287-008-230.dwg] 3287-008-231[3287-008-231.dwg] 3287-008-232[3287-008-232.dwg] 3287-008-233[3287-008-233.dwg] 3287-008-234[3287-008-234.dwg] 3287-008-235[3287-008-235.dwg] 3287-008-236[3287-008-236.dwg] 3287-008-237[3287-008-237.dwg] 3287-008-238[3287-008-238.dwg] 3287-