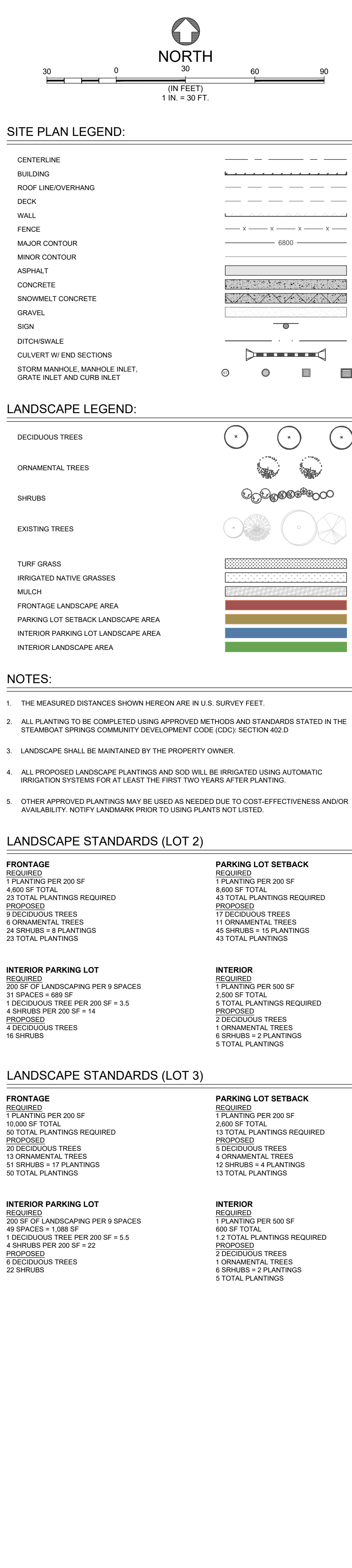
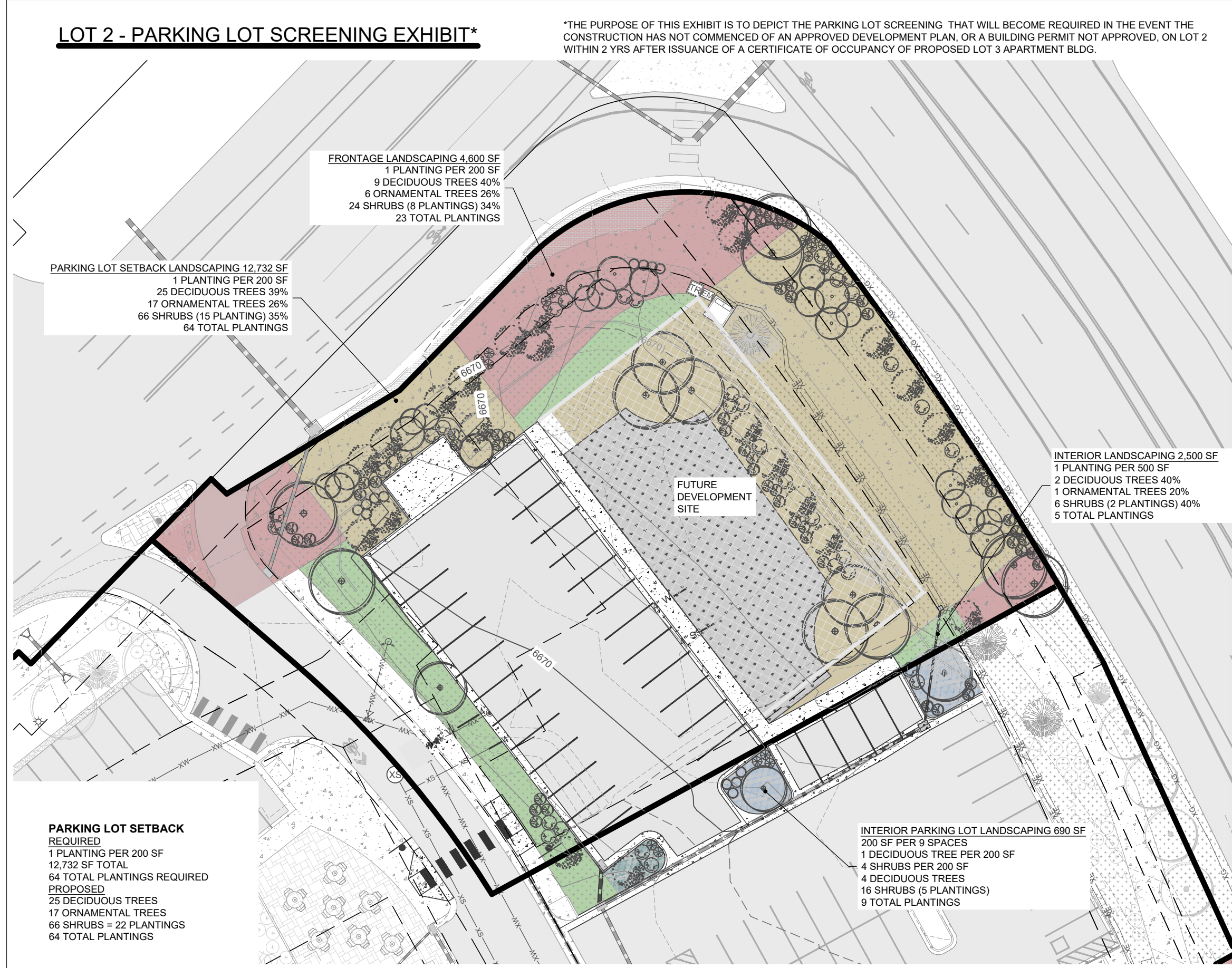



**L.001**





The image shows the KASA logo, which consists of the letters K, A, S, and A each inside a separate square, all within a larger black rectangular frame. Below the logo, the text reads: KEVIN & ASAKO SPERRY ARCHITECTURE, 500 7th Avenue, 8th Floor, New York, NY 10018, T.312.636.3248, and www.kasa-arch.com.

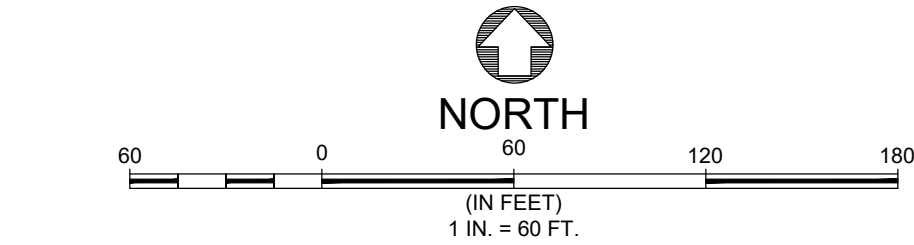
<div>LANDSCAPE STANDARDS</div>	
<div>SEAL</div> 	<div>DATE: 08/01/25</div> <div>DRAWN BY:</div> <div>CHECKED BY:</div> <div>PROJECT NO:</div>
<div>DRAWING NO: L.002</div>	



PHASE 2 - LOT 2



PHASE 2 - LOT 3 (APARTMENT SITE)



SNOW STORAGE AND OPEN SPACE LEGEND:



SNOW STORAGE CALCULATIONS		
PHASE 1		
TOTAL SITE SURFACES REQUIRING SNOW REMOVAL	54,483	SF
SNOW STORAGE REQUIREMENT CALCULATION		
50% OF SURFACES REQUIRING SNOW REMOVAL	27,242	SF
TREES WITHIN SNOW STORAGE AREA	12	
ADDITIONAL SNOW STORAGE REQUIRED (+30 SF/TREE)	360	SF
SUB-TOTAL SNOW STORAGE REQUIRED	27,602	SF
25% REDUCTION ALLOWANCE FOR SITE ELEVATION	6,900	SF
TOTAL SNOW STORAGE REQUIRED	20,701	SF
SNOW STORAGE PROVIDED		
AVAILABLE AREA FOR SNOW STORAGE PER CDC	25,683	SF
POND AREA	3,637	SF

SNOW STORAGE CALCULATIONS		
PHASE 2 - TOWNHOME 1 AND PARKING LOT		
TOTAL SITE SURFACES REQUIRING SNOW REMOVAL	23,888	SF
SNOW STORAGE REQUIREMENT CALCULATION		
50% OF SURFACES REQUIRING SNOW REMOVAL	11,944	SF
TREES WITHIN SNOW STORAGE AREA	1	
ADDITIONAL SNOW STORAGE REQUIRED (+30 SF/TREE)	30	SF
SUB-TOTAL SNOW STORAGE REQUIRED	11,974	SF
25% REDUCTION ALLOWANCE FOR SITE ELEVATION	2,994	SF
TOTAL SNOW STORAGE REQUIRED	8,981	SF
SNOW STORAGE PROVIDED		
AVAILABLE AREA FOR SNOW STORAGE PER CDC	4,566	SF

SNOW STORAGE CALCULATIONS		
PHASE 2 - LOT 2 (WITH FUTURE BLDG ENCUMBRANCE)		
TOTAL SITE SURFACES REQUIRING SNOW REMOVAL	16,405	SF
SNOW STORAGE REQUIREMENT CALCULATION		
50% OF SURFACES REQUIRING SNOW REMOVAL	8,203	SF
TREES WITHIN SNOW STORAGE AREA	1	
ADDITIONAL SNOW STORAGE REQUIRED (+30 SF/TREE)	30	SF
SUB-TOTAL SNOW STORAGE REQUIRED	8,233	SF
25% REDUCTION ALLOWANCE FOR SITE ELEVATION	2,058	SF
TOTAL SNOW STORAGE REQUIRED	6,174	SF
SNOW STORAGE PROVIDED		
AVAILABLE AREA FOR SNOW STORAGE PER CDC	6,198	SF

SNOW STORAGE CALCULATIONS		
PHASE 2 - LOT 3 (APARTMENT SITE)		
TOTAL SITE SURFACES REQUIRING SNOW REMOVAL	22,042	SF
SNOW STORAGE REQUIREMENT CALCULATION		
50% OF SURFACES REQUIRING SNOW REMOVAL	11,021	SF
TREES WITHIN SNOW STORAGE AREA	-	
ADDITIONAL SNOW STORAGE REQUIRED (+30 SF/TREE)	-	SF
SUB-TOTAL SNOW STORAGE REQUIRED	11,021	SF
25% REDUCTION ALLOWANCE FOR SITE ELEVATION	2,755	SF
TOTAL SNOW STORAGE REQUIRED	8,266	SF
SNOW STORAGE PROVIDED		
AVAILABLE AREA FOR SNOW STORAGE PER CDC	5,910	SF

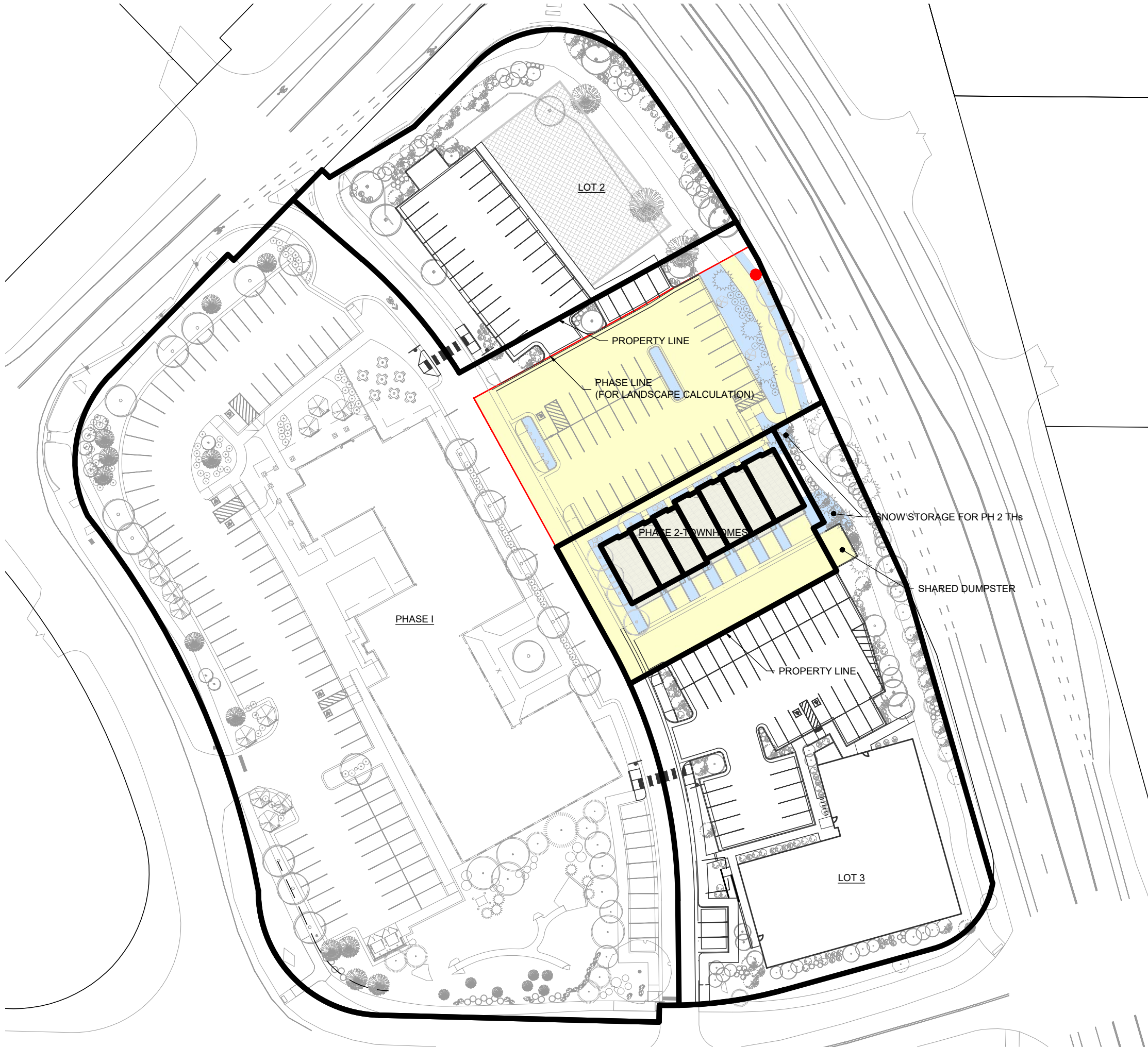
OPEN SPACE CALCULATIONS		
LOT 2		
TOTAL LOT AREA	30,155	SF
OPEN SPACE REQUIRED (15% OF TOTAL LOT AREA)		
TOTAL OPEN SPACE REQUIRED	4,523	SF
TOTAL OPEN SPACE PROVIDED	13,343	SF

OPEN SPACE CALCULATIONS		
LOT 3		
TOTAL LOT AREA	43,624	SF
OPEN SPACE REQUIRED (15% OF TOTAL LOT AREA)		
TOTAL OPEN SPACE REQUIRED	6,544	SF
TOTAL OPEN SPACE PROVIDED	12,051	SF

PHASE 1



PHASE 2 - TOWNHOME 1 AND PARKING LOT



APPROVAL STAMPS:

3	9/19/2025	Modified Lot 2, Misc.
2	8/1/2025	Addressed DRT Comments
1	3/3/2025	Development Plan Submittal
No.	Date	Description

SUBMISSIONS & REVISIONS

OWNER

May Riegler Properties  
7200 Wisconsin Avenue, Suite 500  
Bethesda, MD 20814  
PO Box 881330  
Steamboat Springs, CO 80488

ARCHITECT

K A S A  
KEVIN & ASAKO SPERRY ARCHITECTURE  
500 7th Avenue, 8th Floor  
New York, NY 10018  
T.312.636.3248  
www.kasa-arch.com

STRUCTURAL ENGINEER

M.E.P. & F.P. ENGINEERS

CIVIL ENGINEER

LANDMARK CONSULTANTS, INC.  
141 9th Street  
PO Box 774943  
Steamboat Springs, Colorado 80477  
T.970.871.9494

LANDSCAPE ARCHITECT

GENERAL CONTRACTOR

PROJECT LOCATION

Steamboat  
Basecamp 2

Steamboat Basecamp, Lot 2  
Steamboat Springs, CO

DRAWING TITLE

SNOW STORAGE  
AND OPEN SPACE

SEAL



DATE:	08/01/25
DRAWN BY:	
CHECKED BY:	
PROJECT NO:	

DRAWING NO:

L.003