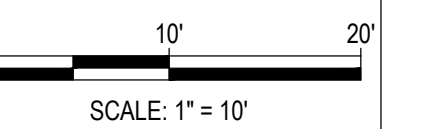


NO.	DATE	REVISIONS

**LOT 1
VILLAGE DRIVE
SUBDIVISION**

Horizontal Scale



Contour Interval = 1 ft

DATE: 8-21-2025
JOB #: 1849-012
DRAWN BY: WNM
DESIGN BY: CFB
REVIEW BY: WNM

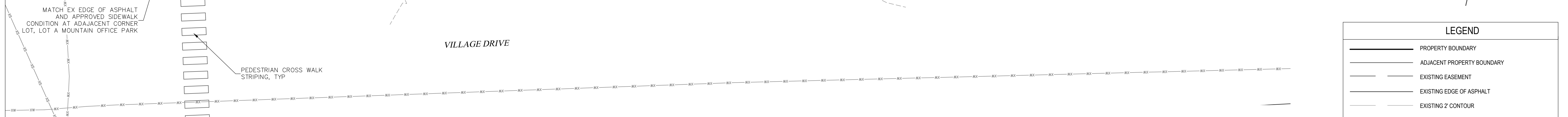
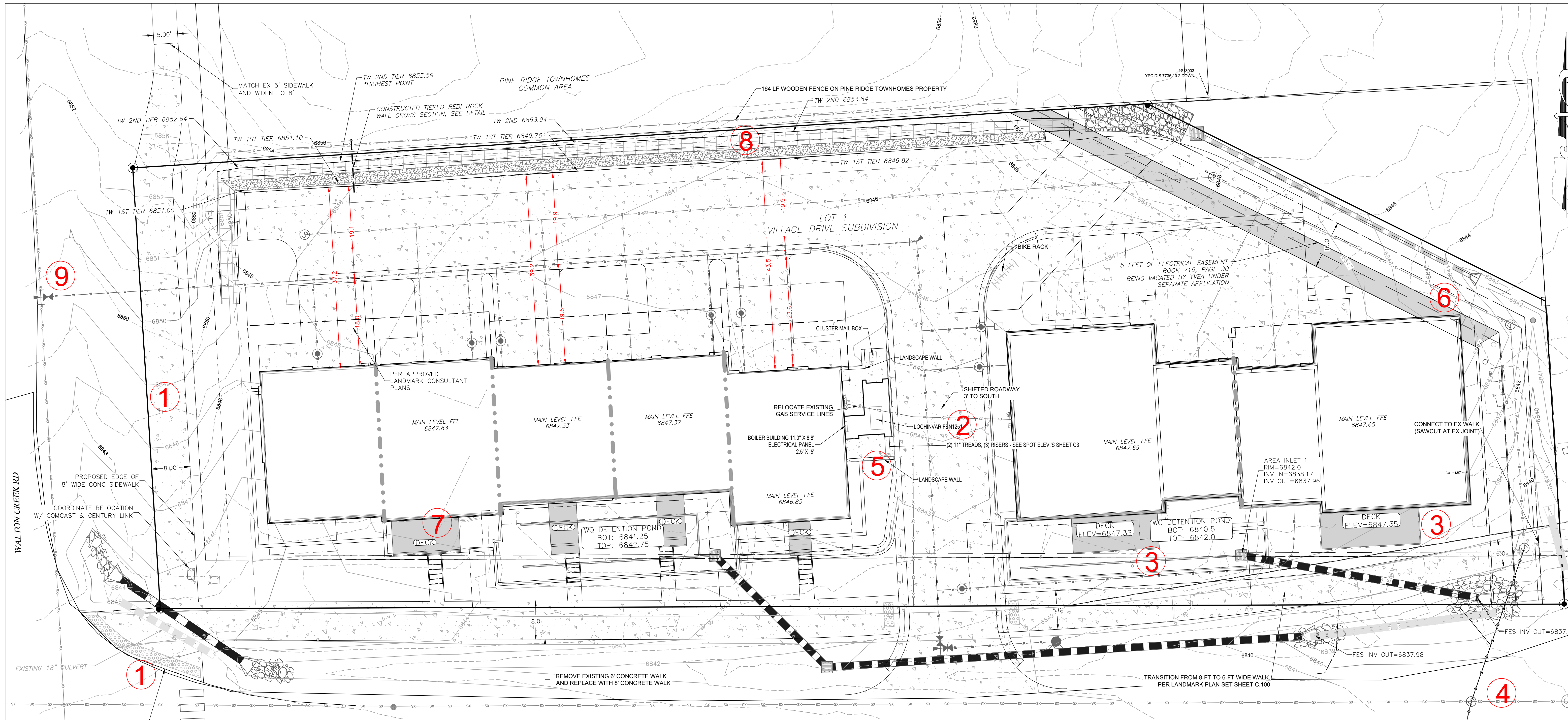
IF THIS DRAWING IS PRESENTED IN A
FORMAT OTHER THAN 24" X 36" THE
GRAPHIC SCALE SHOULD BE UTILIZED.

**SITE PLAN &
REVISION
EXHIBIT**

DRAWING:

SHEET #

C2



REVISIONS KEY:

- ① MODIFIED SIDEWALK ALIGNMENT ALONG WALTON CREEK ROAD AND MODIFIED CONNECTION AT SOUTHEAST CORNER OF WALTON CREEK ROAD AND VILLAGE DRIVE
- ② SITE ENTRANCE ON VILLAGE DRIVE SHIFTED 3-FT SOUTH AND BUILDING SHIFTED 4.8-FT SOUTH
- ③ REMOVAL OF STAIRS AND SIDEWALK FOR BUILDING ACCESS CONNECTION ALONG VILLAGE DRIVE
- ④ SANITARY SEWER REVISION, SEE SHEETS C5A AND C5B
- ⑤ BOILER BUILDING AND CLUSTER MAIL BOX AND ASSOCIATED CONCRETE PAVING, LANDSCAPE WALLS AND STEPS
- ⑥ VACATION OF EXISTING ELECTRICAL EASEMENT
- ⑦ DECK DIMENSIONS
- ⑧ RETAINING WALL - AS DESIGNED AND CONSTRUCTED AND WOODEN FENCE ABOVE RETAINING WALL
- ⑨ WATER LINE REVISION, SEE SHEET C6

ABBREVIATIONS:

BOW	BOTTOM OF WALL
BLDG	BUILDING
CL	CENTERLINE
CMU	CONCRETE MASONRY UNITS
CO	CLEAN OUT
CONC	CONCRETE
ELEV	ELEVATION
EOC	EDGE OF CONCRETE
EOG	EDGE OF GRAVEL
EX	EXISTING
FFE	FINISHED FLOOR ELEVATION
FND	FOUNDATION
HP	HIGH POINT
INV	INVERT
LF	LINEAR FEET
PR	PROPOSED
SCH	SCHEDULE
SF	SQUARE FEET
SS	SNOW STORAGE
TOW	TOP OF WALL

REDI-ROCK WALL SECTION
NOT TO SCALE