

STOCKMAN REAL ESTATE SALES CENTER TRAILER

STEAMBOAT SPRINGS, CO 80487

VOLUME 1

SALES CENTER CUP - 12/09/2024

GENERAL
G001 ENTITLEMENTS SALES CENTER COVER SHEET

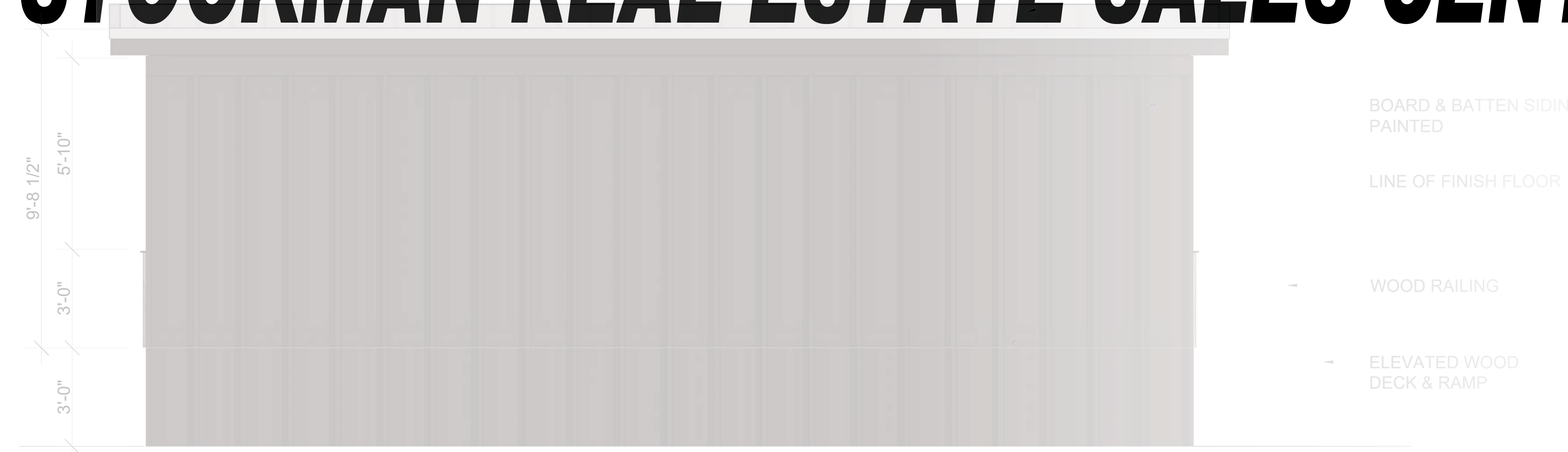
EXISTING CONDITIONS PLAN
C.003 OVERALL EXISTING CONDITIONS PLAN
C.004 DETAILED EXISTING CONDITIONS PLAN

SITE PLAN
C.100 SITE PLAN

ARCHITECTURAL DRAWINGS
A100 SALES CENTER - PLANS & EXTERIOR ELEVATIONS
A101 SALES CENTER - PLANS & INTERIOR ELEVATIONS
A103 SALES CENTER - RENDERINGS



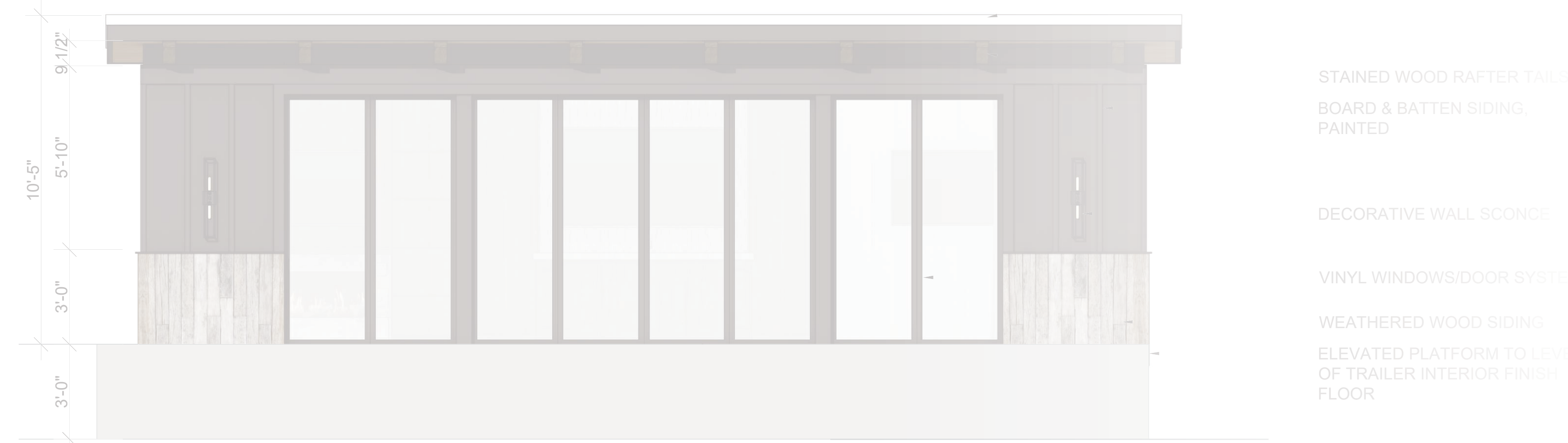
7 ELEVATION - WEST
1/4" = 1'-0"



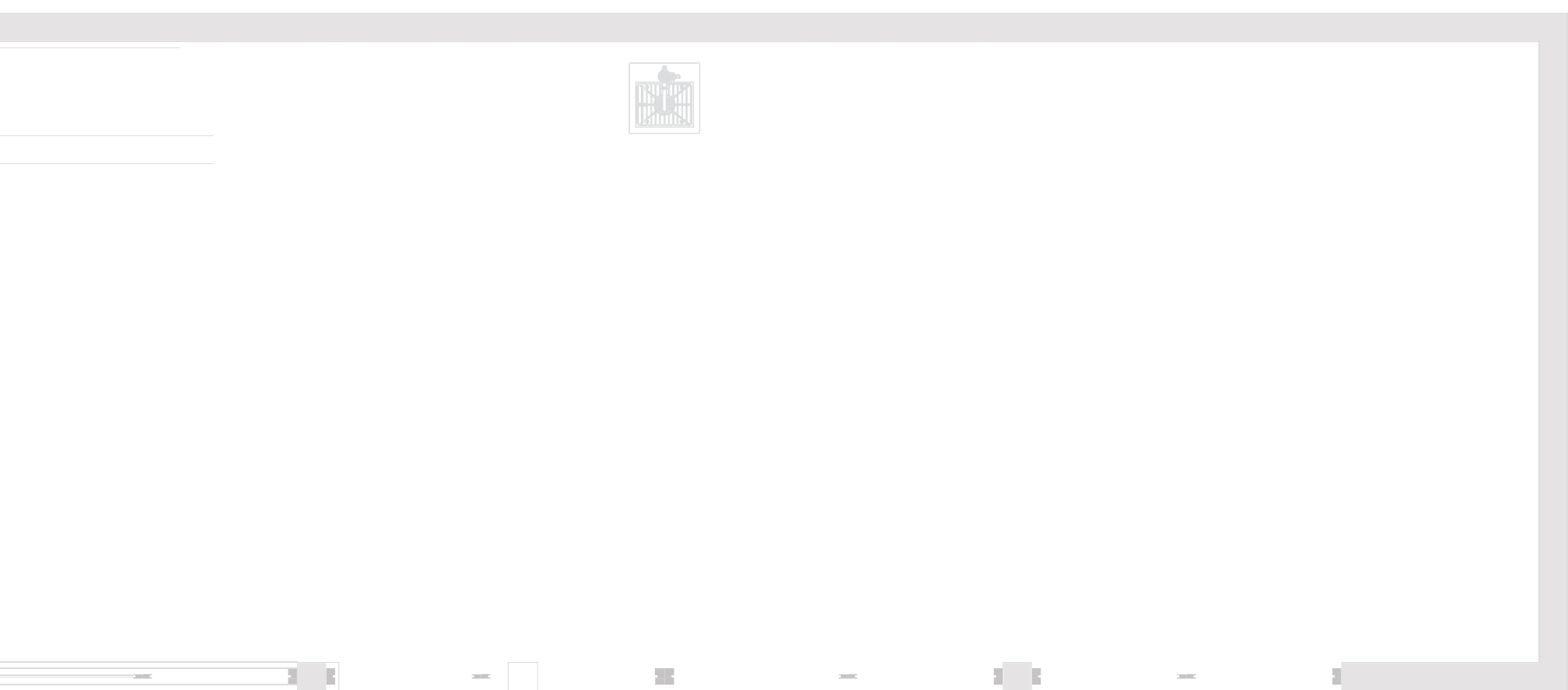
5 ELEVATION - NORTH
1/4" = 1'-0"



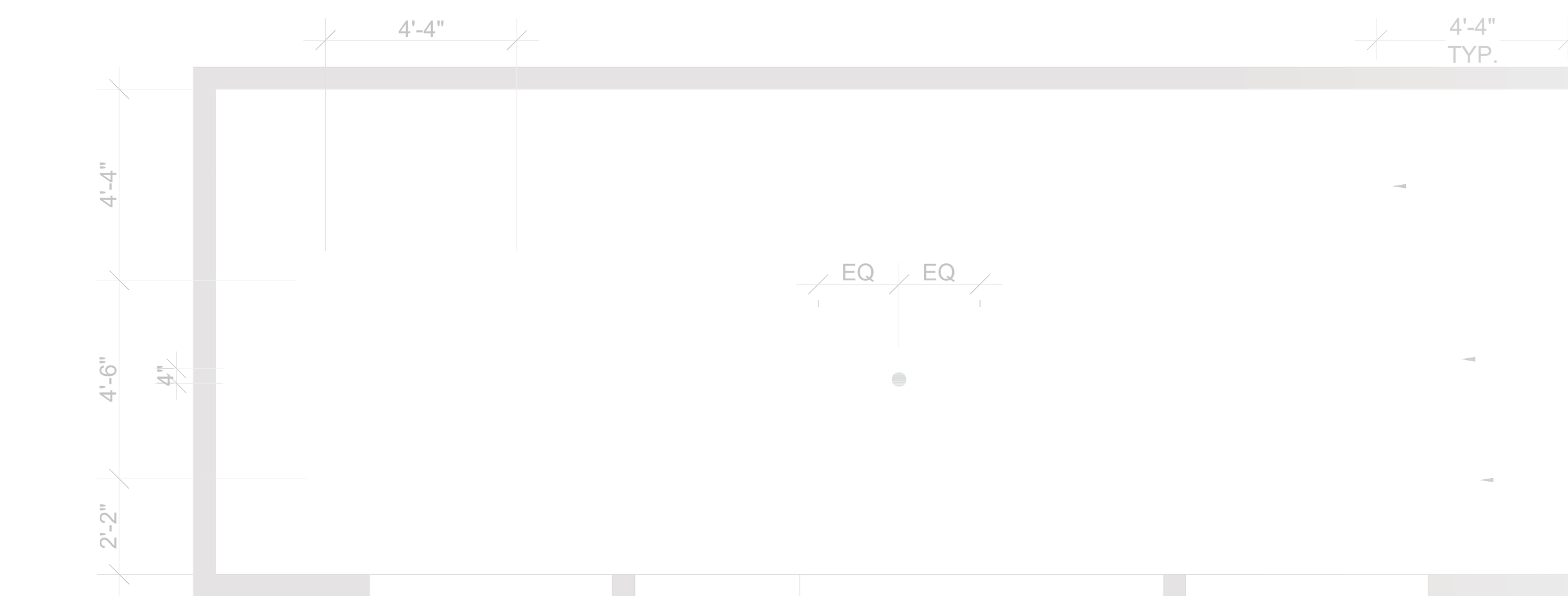
6 ELEVATION - EAST
1/4" = 1'-0"



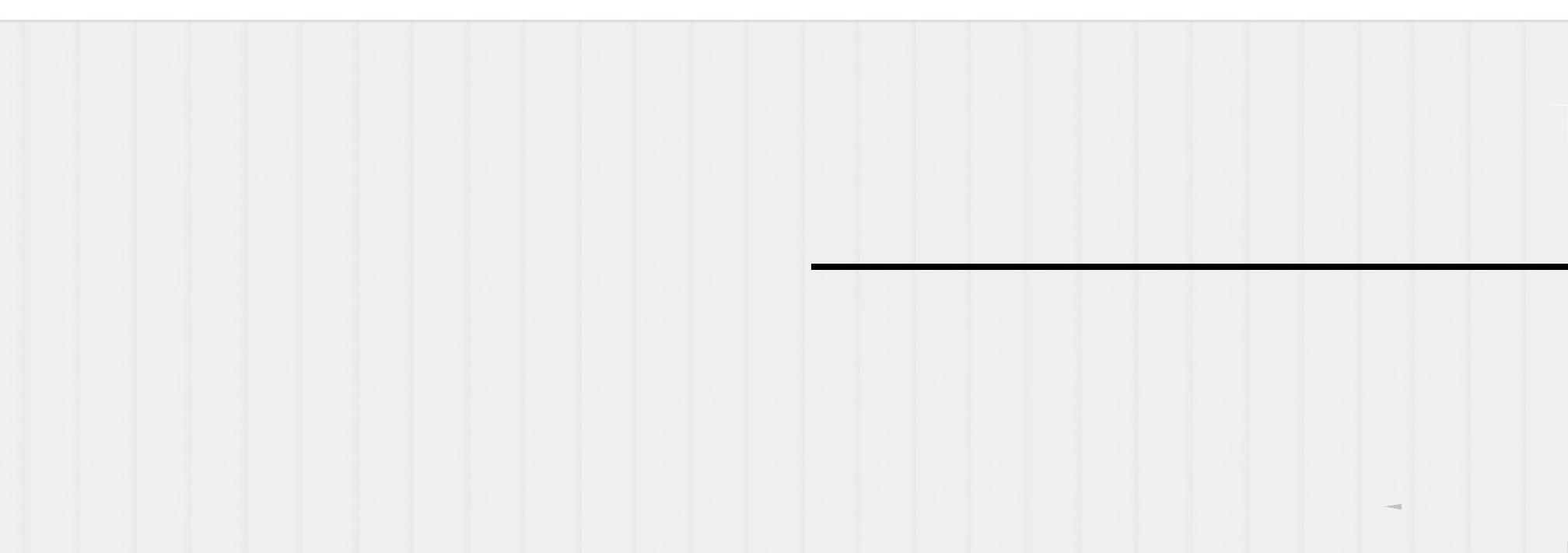
4 ELEVATION - SOUTH
1/4" = 1'-0"



3 RAMP PLAN
1/4" = 1'-0"



2 RCP
1/4" = 1'-0"



BUILDING OUTLINE BELOW

TONGUE & GROOVE WOOD
CEILING

A100 07

11'-0"



SALES CENTER
384 SF

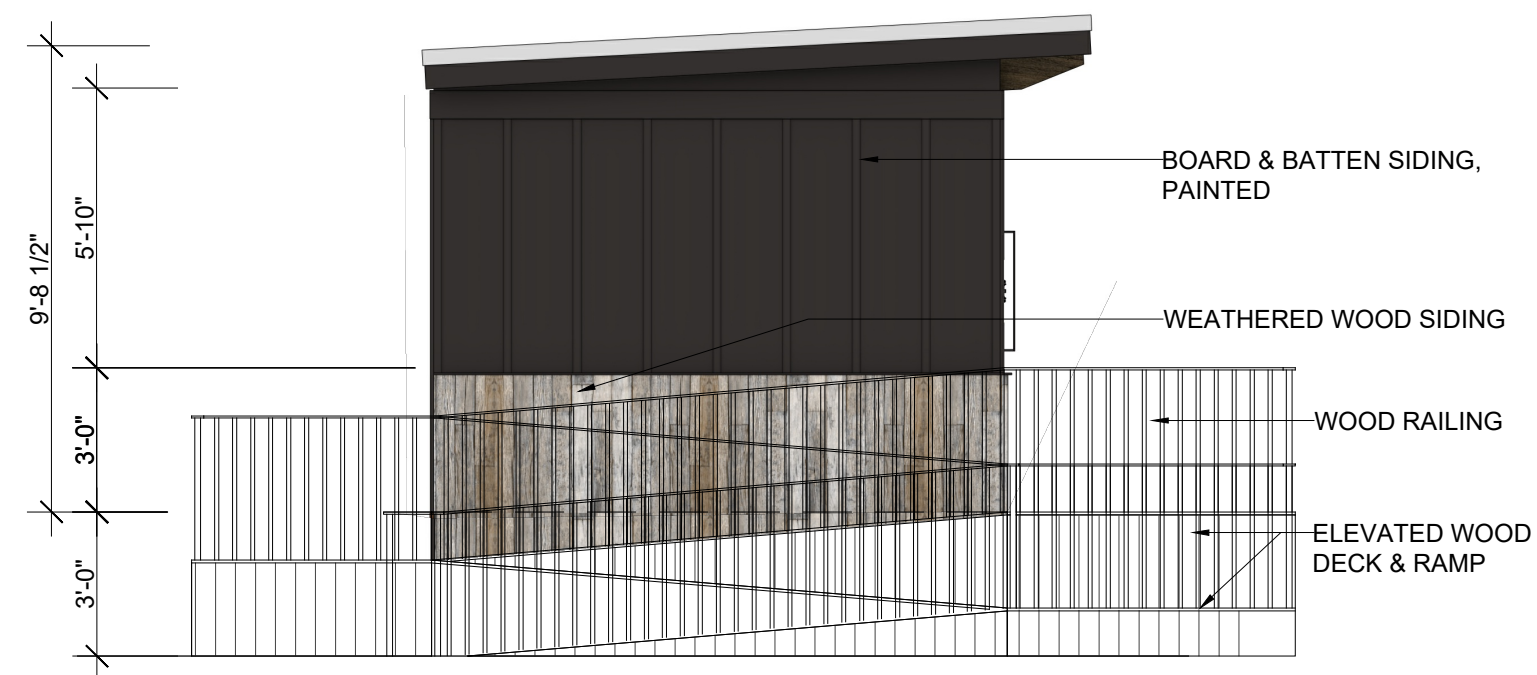
BUILT-IN ELECTRIC CABINETS

06 A100

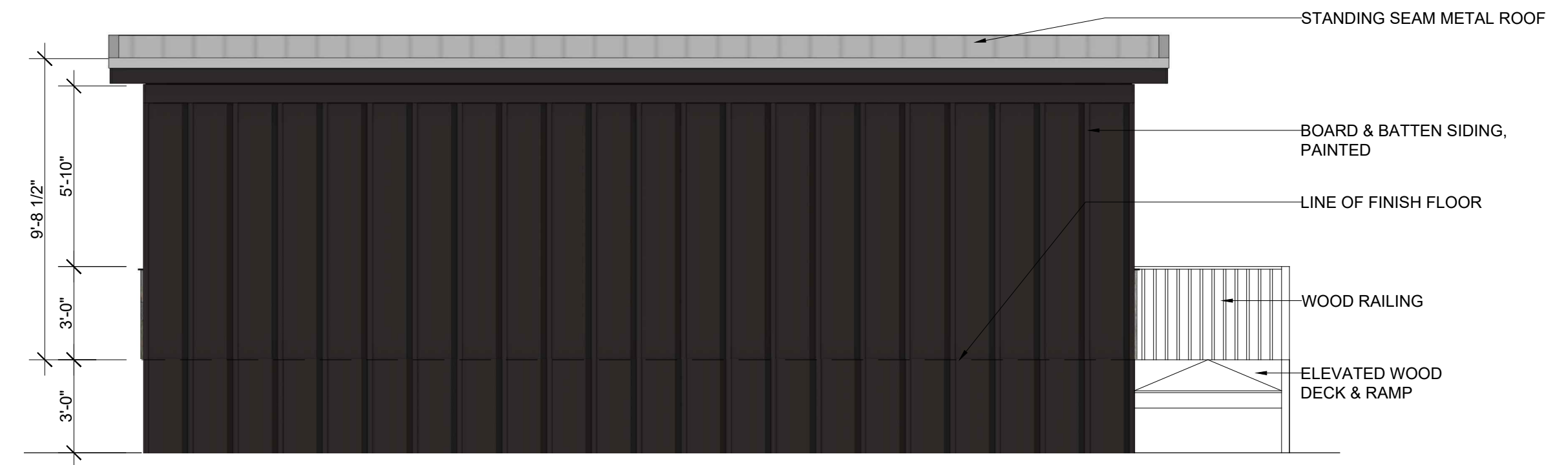
ARCHITECTURAL DRAWINGS

CONDITIONAL USE PERMIT

NOT FOR CONSTRUCTION



7 ELEVATION - WEST
1/4" = 1'-0"



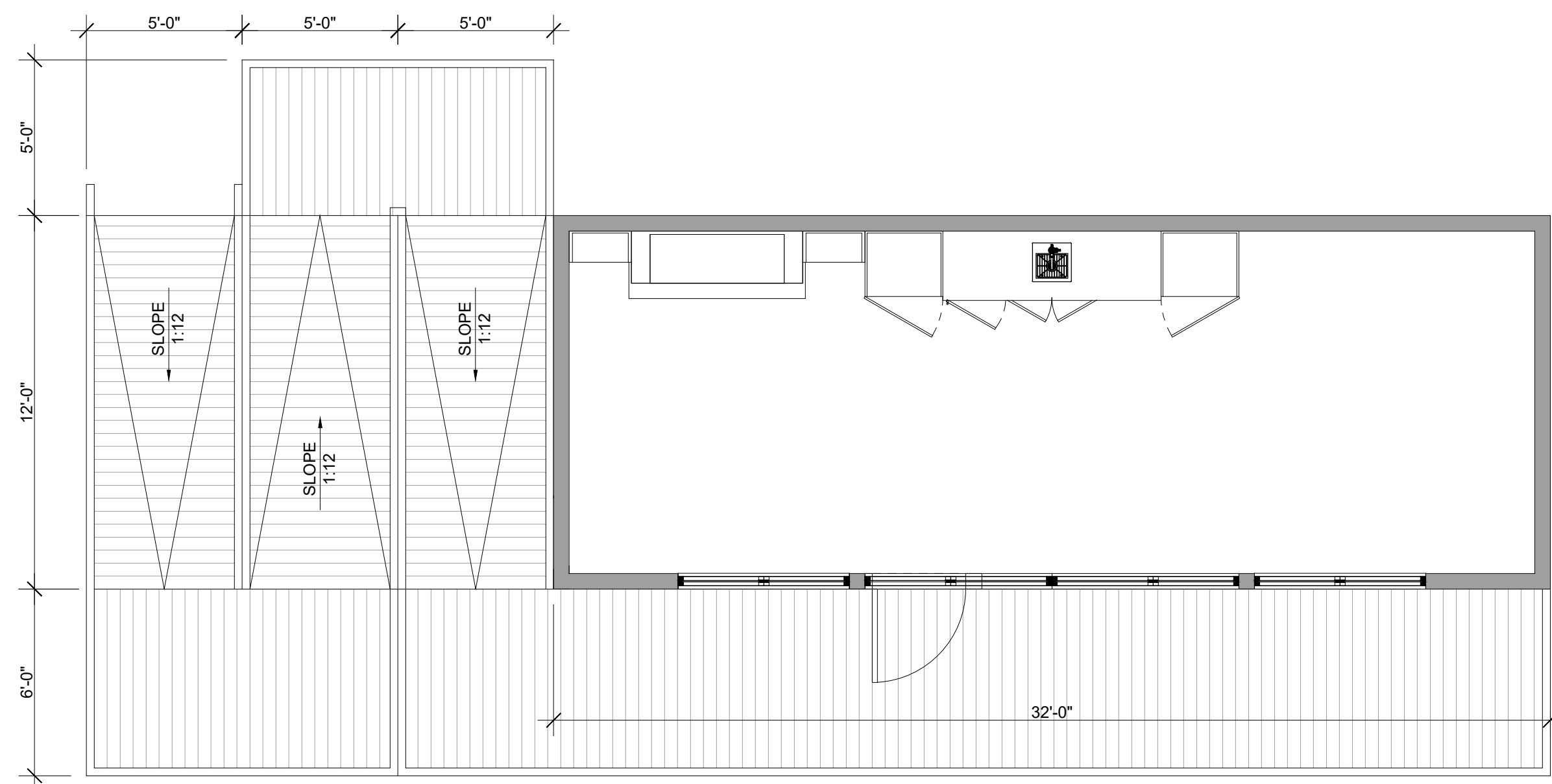
5 ELEVATION - NORTH
1/4" = 1'-0"



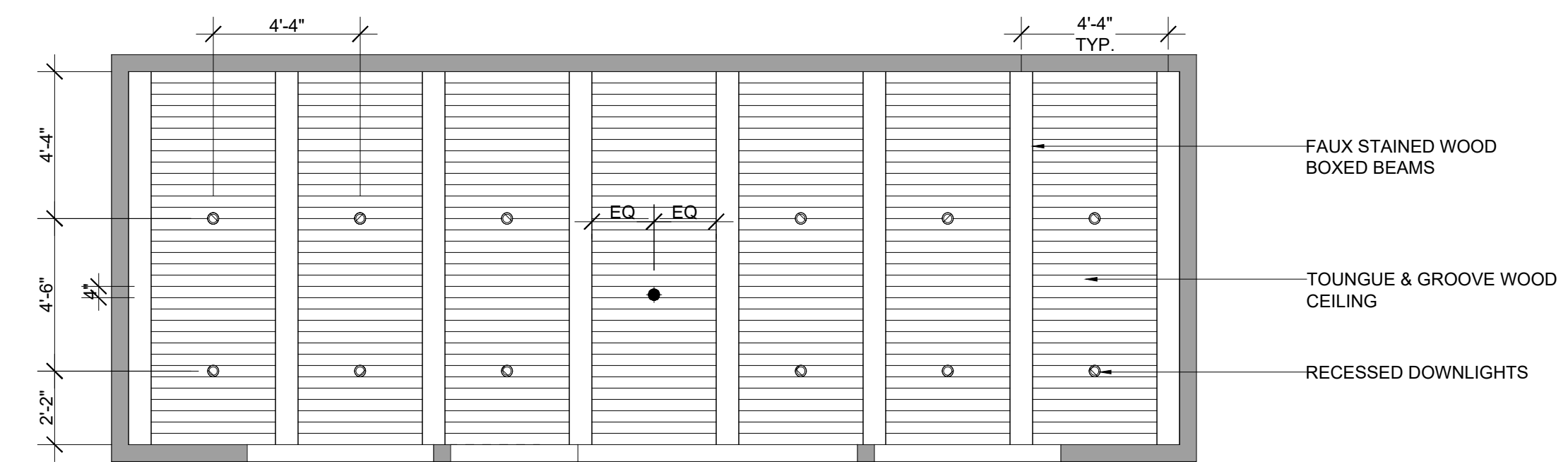
6 ELEVATION - EAST
1/4" = 1'-0"



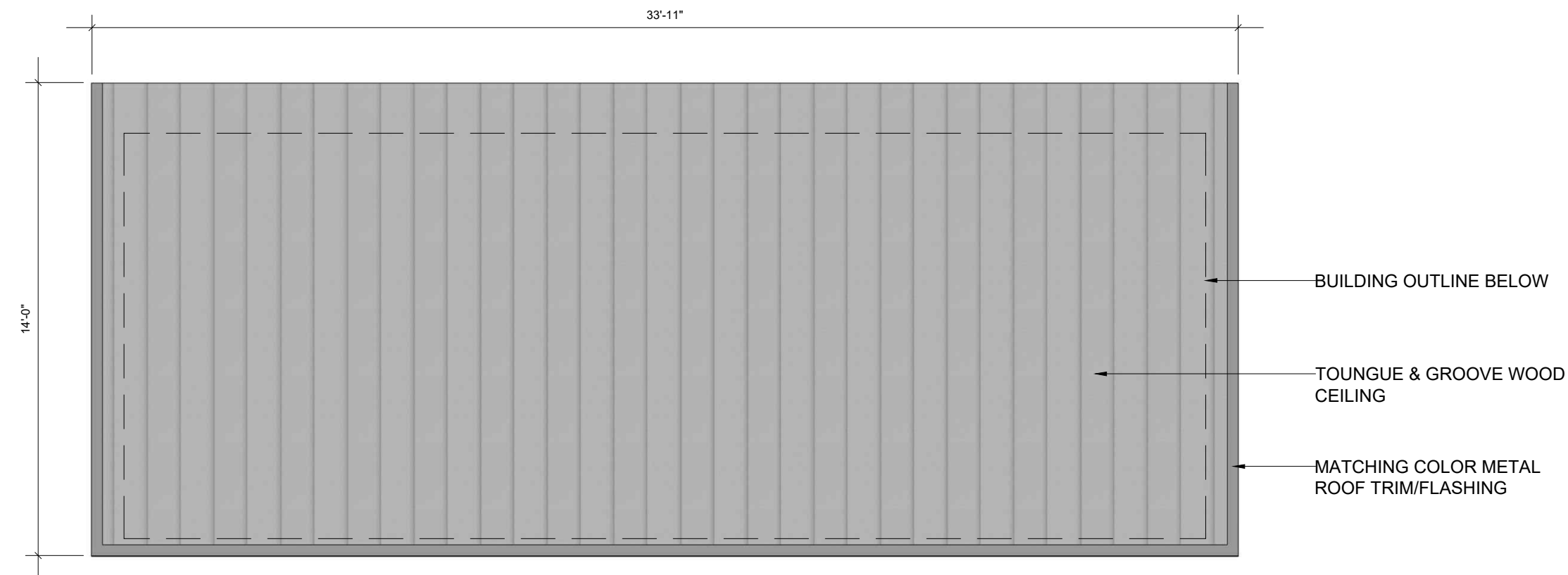
4 ELEVATION - SOUTH
1/4" = 1'-0"



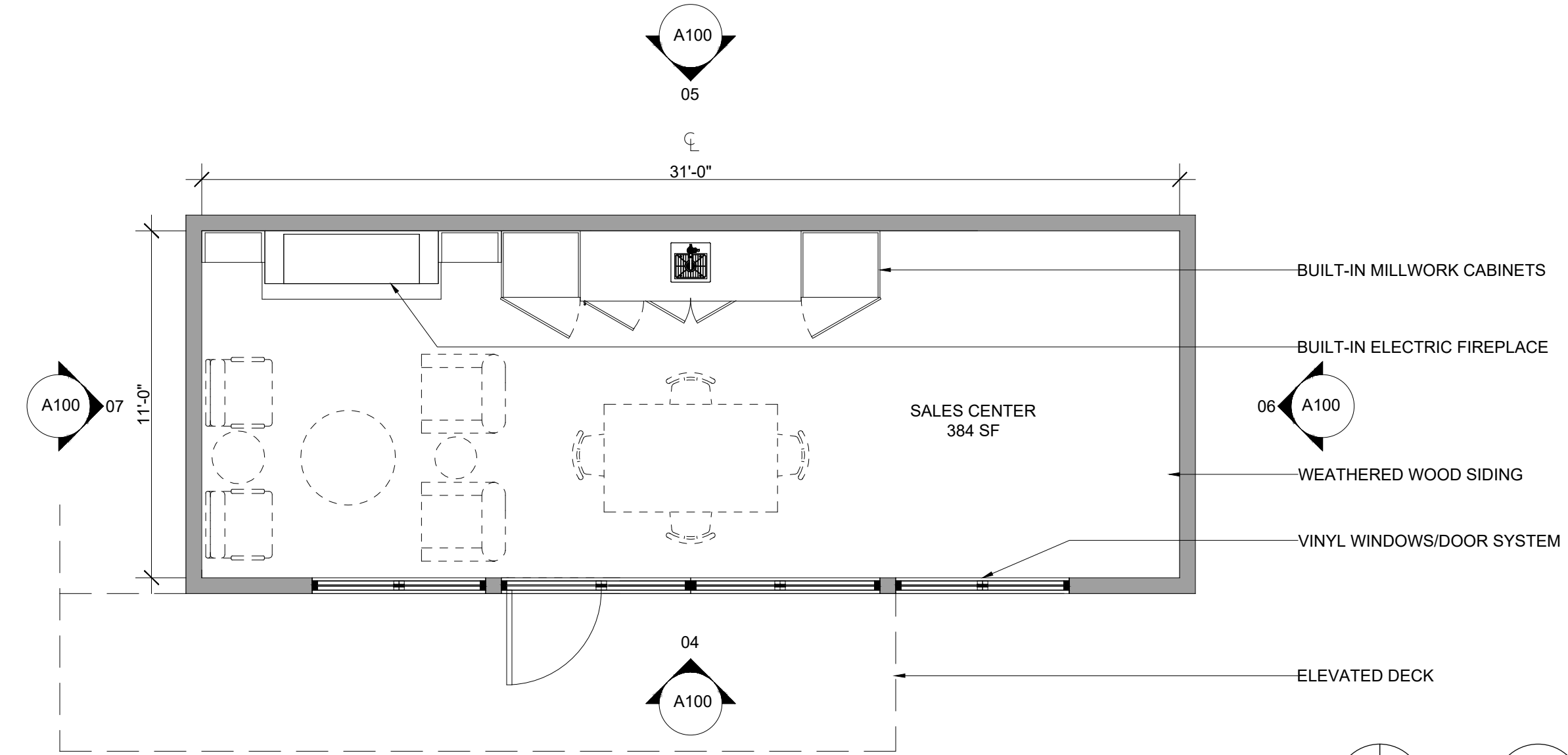
3 RAMP PLAN
1/4" = 1'-0"



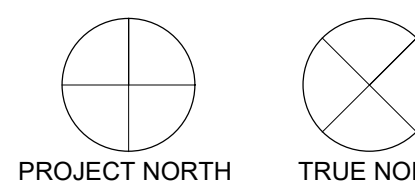
2 RCP
1/4" = 1'-0"



3 ROOF PLAN
1/4" = 1'-0"



1 FLOOR PLAN
1/4" = 1'-0"



**THE STOCKMAN:
SALES CENTER**

STEAMBOAT SPRINGS, CO
NMDA PROJECT NO. A10127

Disclaimer 1: CUP drawings are NOT intended to be used for construction. NMDA's Contract Drawings are intended to illustrate the overall project design intentions and functional layout, and as such, NMDA's drawings DOES NOT represent the local Methods, Techniques and Means of Construction. Contractor shall issue their own shop drawings and only use NMDA's Contract Drawings as reference to meet the design intent.

Disclaimer 2: All Structural, Mechanical, Electrical and Plumbing Layout and Requirements are to be completed, verified and approved by the local Registered Structural, Mechanical, Electrical and Plumbing Engineers for compliance with the Local Building Safety, Codes and Regulations having jurisdiction over the Project's site.

Disclaimer 3: All Fire Analysis Studies and Building Codes are to be verified and approved by the Registered Local Architect of Record for compliance with Local Building Safety, Codes and Regulations having jurisdiction over the Project's site.

ISSUE DRAWING LOG

NO.	DESCRIPTION	DATE
01	CUP SUBMISSION	12.09.2024

DESIGN DRAWINGS

SHEET TITLE | NAME

SALES CENTER - PLANS & EXTERIOR ELEVATIONS

SHEET NO.

A100

NOT FOR CONSTRUCTION

XX.XX.XXXX

SIGNED BY: TBD

DATE:

**THE STOCKMAN:
SALES CENTER**

STEAMBOAT SPRINGS, CO
NMDA PROJECT NO. A10127

Disclaimer 1: CUP drawings are NOT intended to be used for construction. NMDA's Contract Drawings are intended to illustrate the overall project design intentions and functional layout, and as such, NMDA's drawings DOES NOT represent the local Methods, Techniques and Means of Construction. Contractor shall issue their own shop drawings and only use NMDA's Contract Drawings as reference to meet the design intent.

Disclaimer 2: All Structural, Mechanical, Electrical and Plumbing Layout and Requirements are to be completed, verified and approved by the local Registered Structural, Mechanical, Electrical and Plumbing Engineers for compliance with the Local Building Safety, Codes and Regulations having jurisdiction over the Project's site.

Disclaimer 3: All Fire Analysis Studies and Building Codes are to be verified and approved by the Registered Local Architect of Record for compliance with Local Building Safety, Codes and Regulations having jurisdiction over the Project's site.

ISSUE DRAWING LOG

NO.	DESCRIPTION	DATE
01	CUP SUBMISSION	12.09.2024

DESIGN DRAWINGS

SHEET TITLE | NAME

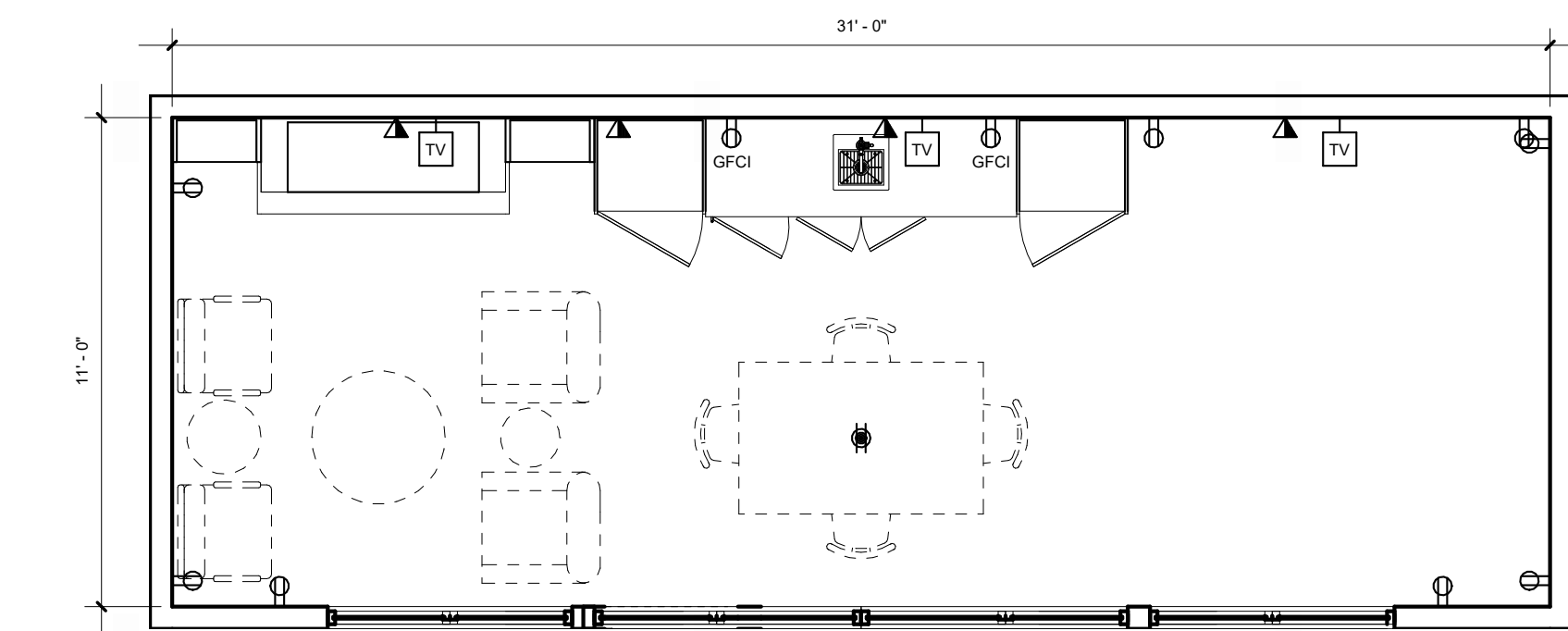
**SALES CENTER - PLANS &
INTERIOR ELEVATIONS**

SHEET NO.

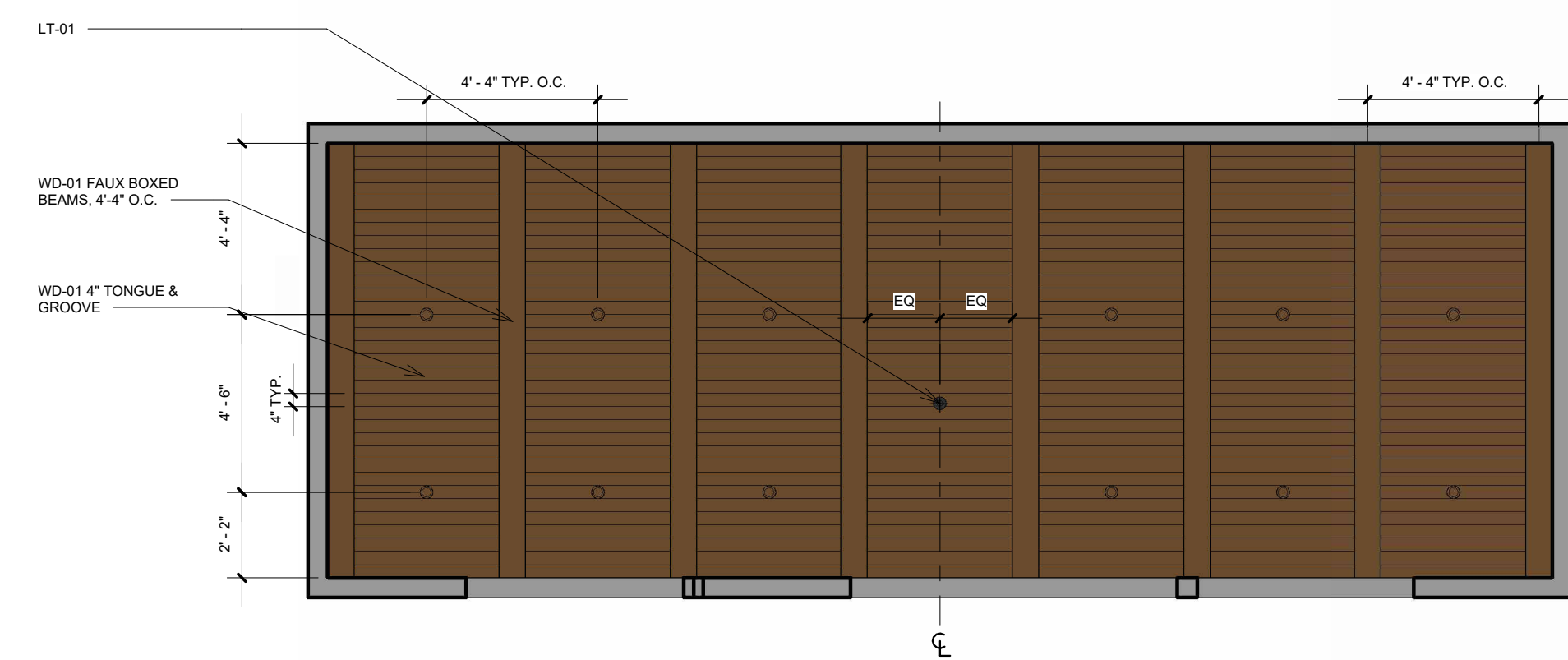
A101

SYMBOLS LEGEND

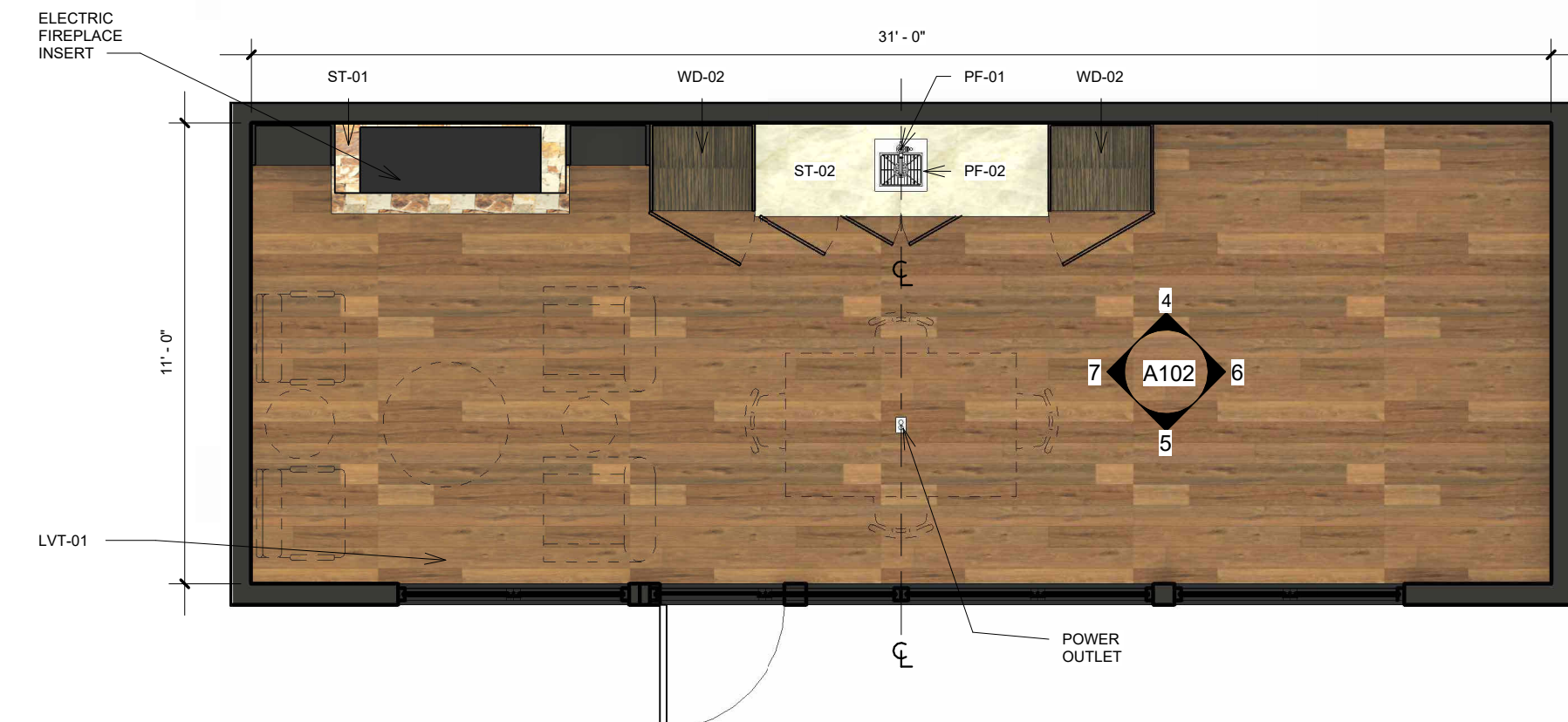
	DATA TELEPHONE
	TV OUTLET
	DUPLEX OUTLET GFCI INDICATES GROUND FAULT OUTLET
	FLOOR OUTLET



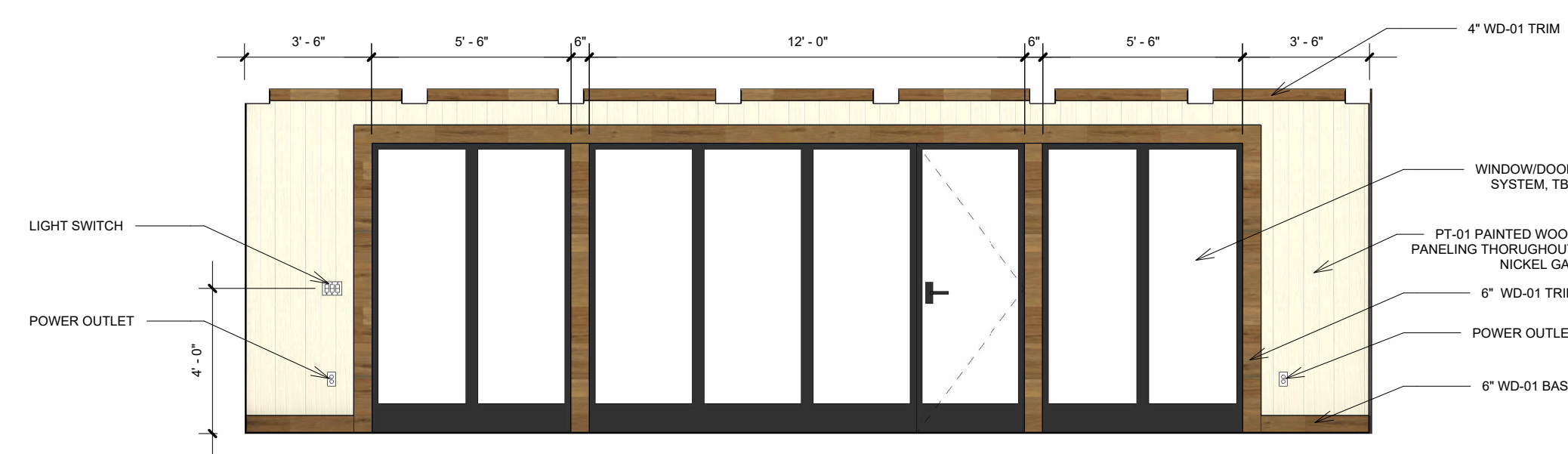
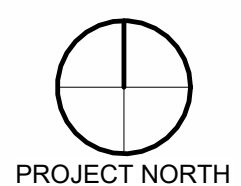
3 POWER PLAN
1/4" = 1'-0"



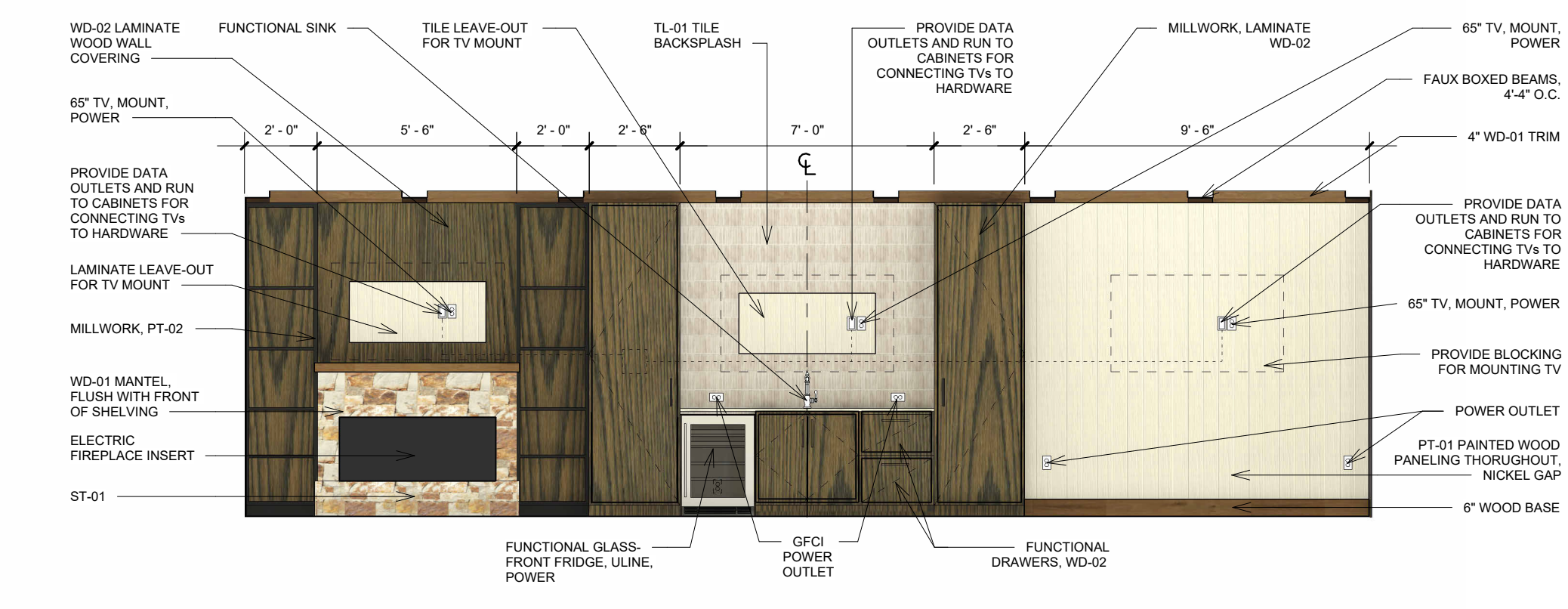
2 RCP
1/4" = 1'-0"



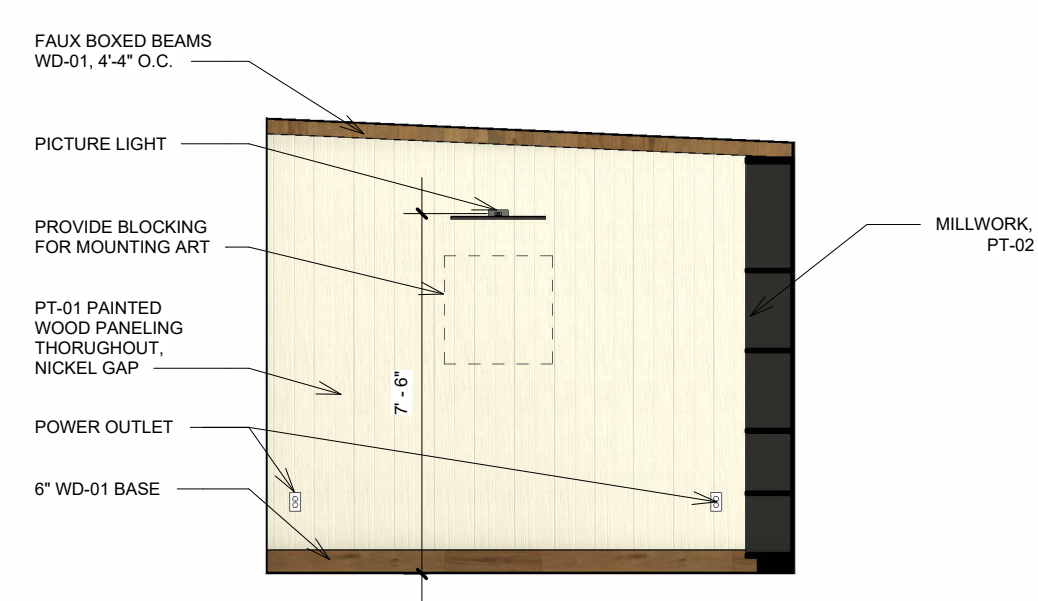
1 FLOOR PLAN
1/4" = 1'-0"



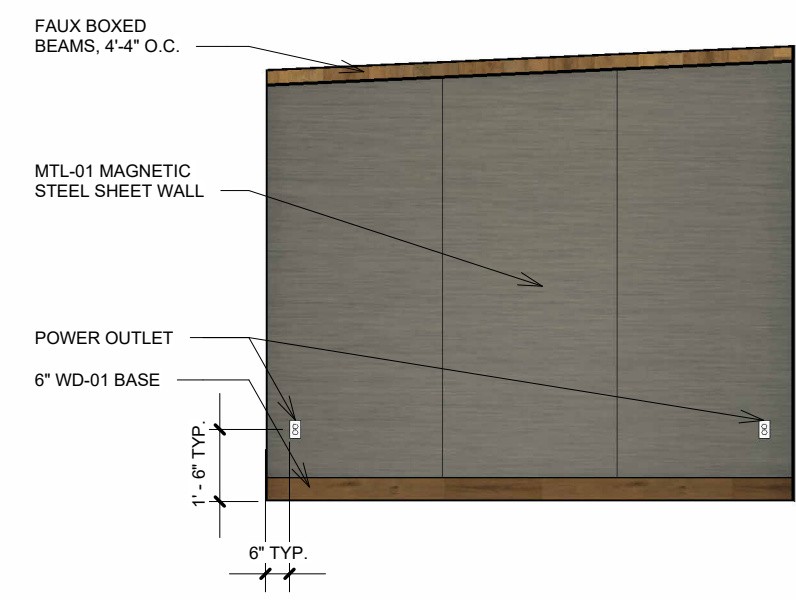
5 SOUTH ELEVATION
1/4" = 1'-0"



4 NORTH ELEVATION
1/4" = 1'-0"



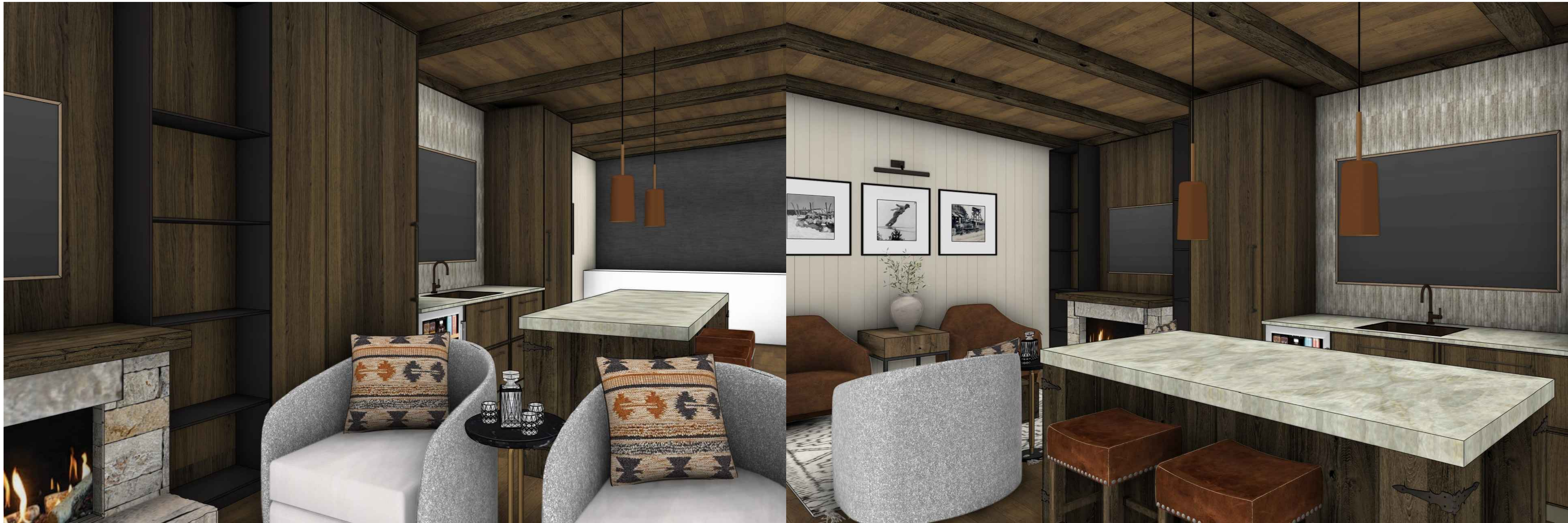
7 WEST ELEVATION
1/4" = 1'-0"



6 EAST ELEVATION
1/4" = 1'-0"



4 NORTH ELEVATION
1/4" = 1'-0"



**THE STOCKMAN:
SALES CENTER**

STEAMBOAT SPRINGS, CO
NMDA PROJECT NO. A10127



Disclaimer 1: CUP drawings are NOT intended to be used for construction. NMDA's Contract Drawings are intended to illustrate the overall project design intentions and functional layout, and as such, NMDA's drawings DOES NOT represent the local Methods, Techniques and Means of Construction. Contractor shall issue their own shop drawings and only use NMDA's Contract Drawings as reference to meet the design intent.

Disclaimer 2: All Structural, Mechanical, Electrical and Plumbing Layout and Requirements are to be completed, verified and approved by the local Registered Structural, Mechanical, Electrical and Plumbing Engineers for compliance with the Local Building Safety, Codes and Regulations having jurisdiction over the Project's site.

Disclaimer 3: All Fire Analysis Studies and Building Codes are to be verified and approved by the Registered Local Architect of Record for compliance with Local Building Safety, Codes and Regulations having jurisdiction over the Project's site.

ISSUE DRAWING LOG

NO.	DESCRIPTION	DATE
01	CUP SUBMISSION	12.09.2024

DESIGN DRAWINGS
SHEET TITLE | NAME

**SALES CENTER -
RENDERINGS**

SHEET NO.

A103