



NOT FOR
CONSTRUCTION

1965 SKI TIME SQUARE DRIVE STEAMBOAT SPRINGS, CO 80487

REVISIONS:
NO DATE DESCRIPTION

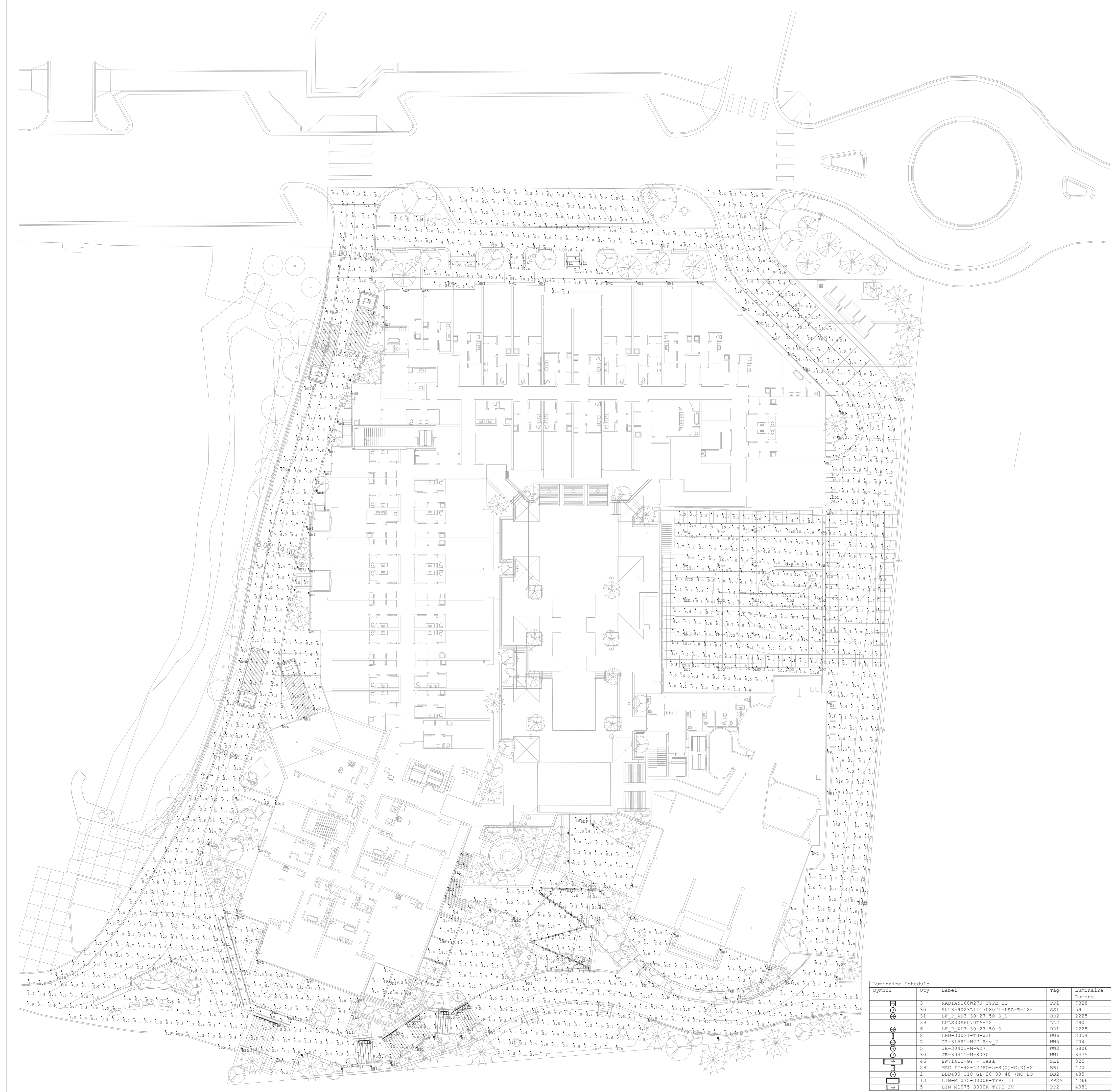
PROJECT NUMBER:
123134.00

DATE:
11/06/2024

ISSUED FOR:
DP Submittal #3

SHEET TITLE:
SITE LIGHTING
PHOTOMETRIC

SHEET NUMBER
LI.100



Symbol	Qty	Label	Tag	Luminaire
○	3	RADIANTPOINT-FR-VFPE II	FP1	7328
○	20	R023-R0231117R001-ISA-W-12"	RS1	88
○	31	LF-P-W03-3573750S-1	DD2	2225
○	29	L0130R001P2A-11	LD2	230
○	4	LF-P-W03-3573750S-2	DD1	2225
○	2	LEW-30021-F3-W30	WW6	2054
○	1	Q1-33333-W07-ROW-2	W05	374
○	5	JE-30401-W-W07	W02	5884
○	20	JE-30411-W-W03	W01	5875
○	46	HW7112-707 - C-000	SL1	357
○	29	MAC II-42-12780-5-C1X1-C1X1-X	BB1	420
○	2	L04040-C10-10-30-30-48 100 L0	BB2	185
○	13	L10-M1075-3000P-VFPE II	FP2A	4246
○	3	L10-M1075-3000P-VFPE IV	FP2	4081

SL1



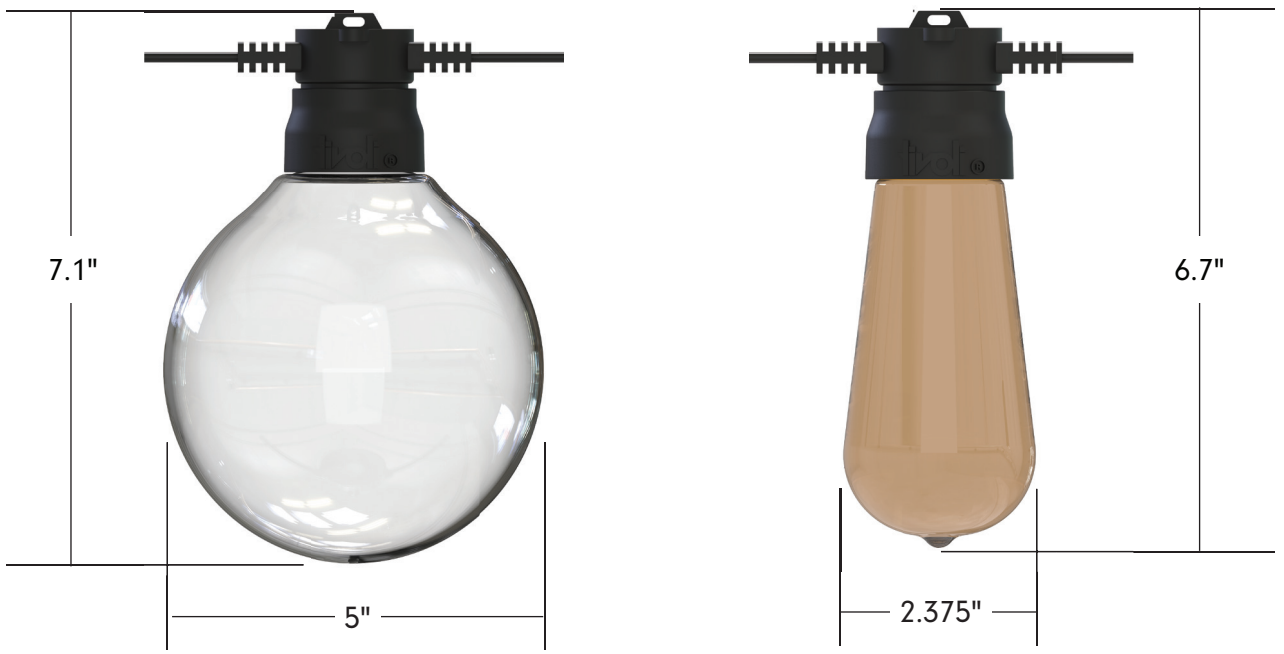
12V | Litesphere™ ADAPT 2.0



Project: _____ Type: _____

- The next evolution of ADAPT delivers a robust specification-grade strand with factory molded standard spacing for consistent quality from start to finish
- Litesphere ADAPT 2.0 design provides optional suspended mounting or a twist-off cap for surface applications
- 12V DC Low voltage system for long runs
- Socket and cord color available in black or white
- Proprietary ADAPT screw base fitting
- Silicone-coated ADAPT glassware for assisting with shatter resistance
- IP67
- eULus
- 3 Year warranty

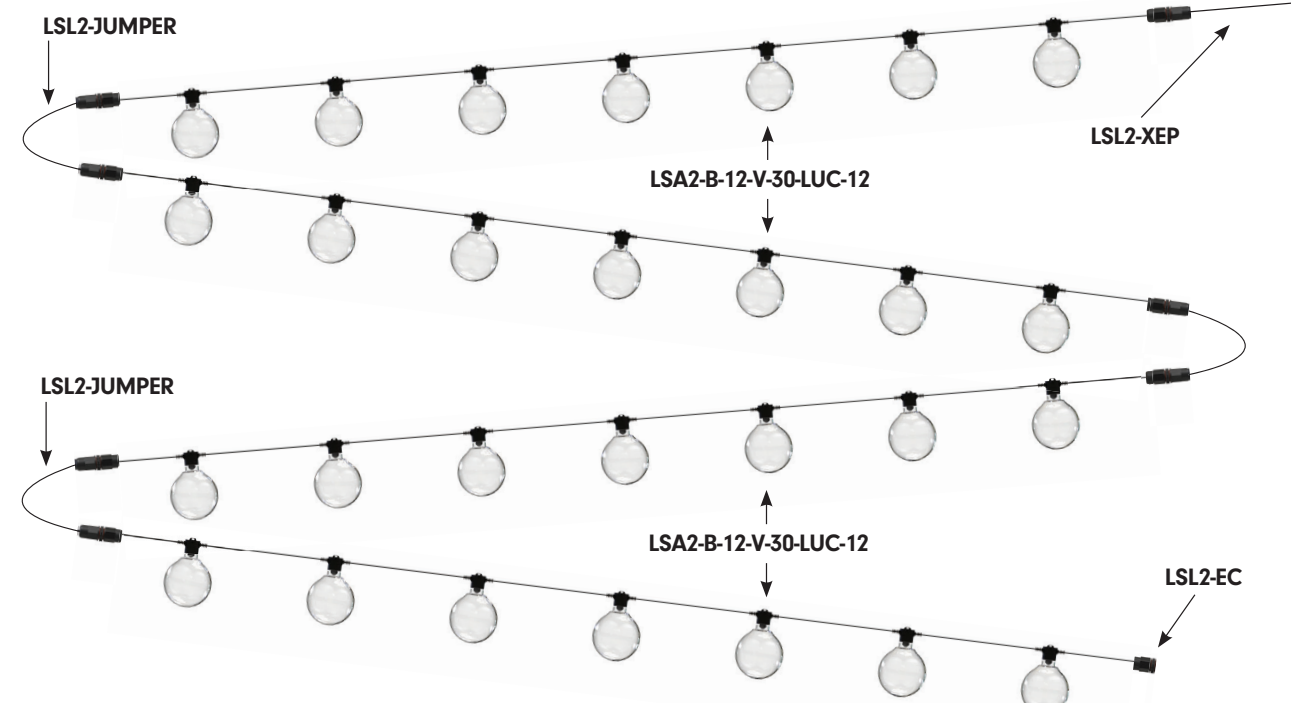
Dimensions



Trolli, LLC reserves the right to modify this specification without prior notice. Copyright © 2021 Trolli 06.27.2024 Page 2 of 10 www.trollighting.com tel: 714-957-6101 fax: 714-427-3458

12V | Litesphere™ ADAPT 2.0

System Configuration Example



Strand Order Guide

Note: For suspension application, a catenary cable is required for proper installation. Please contact Trolli for recommendations on unique mounting applications.

Product	Wire	Spacing	LED Type	LED Color	Globe	Light Shield*	Voltage
Litesphere ADAPT 2.0	B Black	12" 12" OC	V Very High Output	19 1900K ANA Ana	Y Yes	12 12V DC	12
	W White**	18" 18" OC		27 2700K VIC* Victoria	N No		
		24" 24" OC		30 3000K GAB Gabby			
		36" 36" OC		35 3500K BRE Brenda			
		48" 48" OC		40 4000K LAM* Laura			
				50 5000K GIN Gina			
				AM Amber ANG Angela			
				RB Royal Blue KAT Katie			
				RD Red SUE* Susan			
				GN Green TOM* Tom			
				YL Yellow LUC* Lucia			
				TS Turquoise COG* Varied Globes			

*Light Shade are optional. Consult factory for lead time and available style and sizes - see page 13
**Consult Factory for MOD and Lead Time.

Trolli, LLC reserves the right to modify this specification without prior notice. Copyright © 2021 Trolli 06.27.2024 Page 3 of 10 www.trollighting.com tel: 714-957-6101 fax: 714-427-3458

LL2



LINEAR LUMINAIRE

- Industry leading output:
 - 70° asymmetric @ 45° above nadir
 - Matte and transparent lens options
 - Available in 140, 152, 284 or 413 lpf (4000 K Values)
 - IES full cutoff classification when installed in Wagner Architectural Systems handheld
 - Fully gasketed, extruded aluminum housing
 - ETL wet location listed, UL1598 certified
 - Cast 316 stainless steel, mechanical mounting, secure but easily serviceable
 - CCT standard in 5 white options
 - 4 solid color options including wildlife repair
 - Up to 88 CRI standard, 95+ available upon request
 - 9 standard lengths from 6" to 54"

© 2021 988 Wagner, Inc. All Rights Reserved. www.wagnercompanies.com LLSA-SUBM-07

LUMENLINEAR™ ASYMMETRIC

Another Lumenair® Component for Life Safety and Light

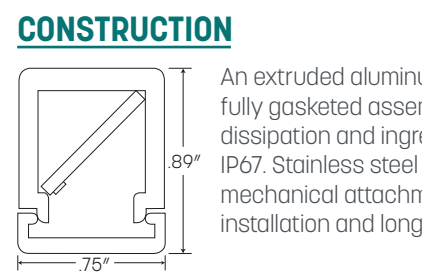
PROJECT NAME: _____
 REP AGENCY: _____
 APPROX. LINEAR FT: _____
 SERVICE OPTIONS: Field Measure Job Site Support System Installation

Part Number Builder

EXAMPLE	FIXTURE TYPE	COLOR TEMP	FIXTURE WATTAGE	BEAM ANGLE	LENS OPTION	LENGTH
LULS40K6070TA24	LULS Luminaire™	2700K	30W	70° Spot	MA-Matte	24"

ELECTRICAL SPECIFICATIONS

24VDC	ETL LISTED WET, UL 1598/CSA 22.2	0-10V INPUT (PWM)	-40°F TO +120°F
INPUT VOLTAGE	CERTIFICATIONS	DIMMING	OPERATING TEMP
CLASS 2 REQUIRED	5 YEARS	UP TO 77 LM/W LED	UP TO 88 CRI (95+ REQUEST)
DRIVER	WARRANTY	EFFICIENCY	18" (X2) WIRE LENGTH



PHOTOMETRICS
 Main Beam 45° + nadir. The asymmetric output has industry leading performance with a 70° beam spread, focused at 45° above nadir. Installed in Wagner Lumenair™, Lumenlinear performs with full IES cutoff. Reports to view or download are available by scanning the QR code or visiting our website.

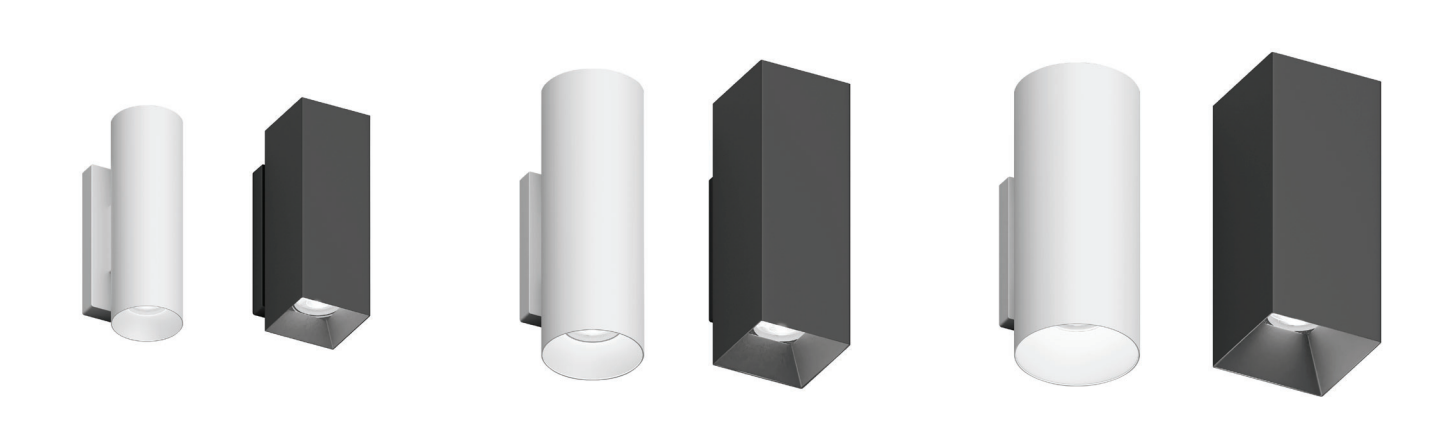
LUMENGEAR™ LED DRIVER & NEMA ENCLOSURE OPTIONS

Wagner offers multiple ETL listed options for both 24VDC power supplies and NEMA enclosures. Quantities and types will be configured based on your specifications and design. Additional specification options are available by request. Not all options apply to all products, please verify compatibility with the factory.	CLASS II DRIVERS: <ul style="list-style-type: none"> STD 100W Dial, DMX, 0-10V Dimming Protocols Multiple Wattages Made in USA Units Available 	NEMA ENCLOSURES: <ul style="list-style-type: none"> 4x - Polycarbonate, Painted Steel or Stainless Steel LUMENPOST™ - Integrated 100W 0-10V DMX
---	--	---

© 2021 988 Wagner, Inc. All Rights Reserved. www.wagnercompanies.com LLSA-SUBM-07

DD1 AND DD2

CSL CYLINDERS
 SPEC-0282 CYLINDER LW 2" 3" 5", 9-1.0, UPDATED 03/4/24



DOWNLIGHT

SIZE	MAX POWER	10° OPTIC	30° OPTIC	50° OPTIC	80° OPTIC
2 inch	20 Watt	1530 lm	1633 lm	1506 lm	1271 lm
3 inch	30 Watt	2227 lm	2646 lm	2440 lm	2023 lm
5 inch	50 Watt	3871 lm	4252 lm	4228 lm	2858 lm

UP & DOWN LIGHT

SIZE	MAX POWER	UP & DOWN	10° OPTIC	30° OPTIC	50° OPTIC	80° OPTIC
2 inch	20 Watt	1 UP	833 lm	876 lm	826 lm	697 lm
3 inch	30 Watt	1 UP	1259 lm	1465 lm	1322 lm	1116 lm
5 inch	50 Watt	1 UP	2059 lm	2234 lm	1951 lm	1423 lm

CCT MULTIPLIER CHART

SIZE	2700K (3000)	3000K (3000)	3500K (3000)	4000K (3000)	4000K (3000)	5000K (3000)
2 inch	0.92	0.87	1.00	1.19	0.85	
3 inch	0.91	0.87	1.00	1.20	0.80	
5 inch	0.92	0.96	1.00	1.17	0.83	

1608 Nelson Ave. City of Industry, CA 91744 • Tel: 626-336-6511 • Fax: 626-336-6506 • www.cslighting.com
 ©2024 Creative Systems Lighting, a Division of The CSL Lighting, Inc. All rights reserved. Subject to change without notice.

CSL CYLINDERS
 SPEC-0282 CYLINDER LW 2" 3" 5", 9-1.0, UPDATED 03/4/24

2" WALL MOUNT ORDER MATRIX

SHAPE	WATTAGE	CCT/CRI	OPTIC	MEDIA 1	MEDIA 2
<input type="checkbox"/> LW02 Wall Downlight 2" Round	<input type="checkbox"/> -10 (10W) <input type="checkbox"/> -15 (15W) <input type="checkbox"/> -20 (20W)	<input type="checkbox"/> -27 (2700K 90CRI) <input type="checkbox"/> -30 (3000K 90CRI) <input type="checkbox"/> -40 (4000K 90CRI) <input type="checkbox"/> -WP* (Warm Dim 90CRI)	<input type="checkbox"/> -10 (10° Spot) <input type="checkbox"/> -30 (30° Narrow Flood) <input type="checkbox"/> -50 (50° Flood) <input type="checkbox"/> -80* (80° Wide Flood)	<input type="checkbox"/> Blank (None) <input type="checkbox"/> CL (Clear Lens) <input type="checkbox"/> MP (Globe Lens) <input type="checkbox"/> FR (Frosted Lens) <input type="checkbox"/> LS (Linear Spread Lens) <input type="checkbox"/> HEX (Hex Louver)	<input type="checkbox"/> Blank (None) <input type="checkbox"/> CL (Clear Lens) <input type="checkbox"/> MP (Globe Lens) <input type="checkbox"/> FR (Frosted Lens) <input type="checkbox"/> LS (Linear Spread Lens) <input type="checkbox"/> HEX (Hex Louver)

2" CYLINDER LED UP & DOWNLIGHT WALL MOUNT (EXAMPLE: LWU2-10-27-30-CL-CL-WT-C-5-S)

SHAPE	WATTAGE	CCT/CRI	1 UP-OPTIC	1 UP-MEDIA 1	1 UP-MEDIA 2
<input type="checkbox"/> LWU2 Wall Up & Downlight 2" Square	<input type="checkbox"/> -10 (10W) <input type="checkbox"/> -15 (15W) <input type="checkbox"/> -20 (20W)	<input type="checkbox"/> -27 (2700K 90CRI) <input type="checkbox"/> -30 (3000K 90CRI) <input type="checkbox"/> -40 (4000K 90CRI) <input type="checkbox"/> -WP* (Warm Dim 90CRI)	<input type="checkbox"/> -10 (10° Spot) <input type="checkbox"/> -30 (30° Narrow Flood) <input type="checkbox"/> -50 (50° Flood) <input type="checkbox"/> -80* (80° Wide Flood)	<input type="checkbox"/> Blank (None) <input type="checkbox"/> CL (Clear Lens) <input type="checkbox"/> MP (Globe Lens) <input type="checkbox"/> FR (Frosted Lens) <input type="checkbox"/> LS (Linear Spread Lens) <input type="checkbox"/> HEX (Hex Louver)	<input type="checkbox"/> Blank (None) <input type="checkbox"/> CL (Clear Lens) <input type="checkbox"/> MP (Globe Lens) <input type="checkbox"/> FR (Frosted Lens) <input type="checkbox"/> LS (Linear Spread Lens) <input type="checkbox"/> HEX (Hex Louver)

ACCESSORIES (2" CYLINDER)

OPTIC	MEDIA	EMERGENCY	DRIVER
<input type="checkbox"/> C2-10-OPTIC (10° Spot)	<input type="checkbox"/> C2-CL (Clear Lens)	<input type="checkbox"/> EM-1000 (25W Remote Inverter)	<input type="checkbox"/> EM-1000-C4 (5W Remote Inverter) Tile 20
<input type="checkbox"/> C2-30-OPTIC (30° Narrow Flood)	<input type="checkbox"/> C2-MP (Globe Lens)	<input type="checkbox"/> EM-1002 (10W Remote EM Driver)	<input type="checkbox"/> EM-1004 (50W Remote Inverter) Tile 20
<input type="checkbox"/> C2-50-OPTIC (50° Flood)	<input type="checkbox"/> C2-FR (Frosted Lens)		<input type="checkbox"/> EM-1006 (50W Remote Inverter) Tile 20
<input type="checkbox"/> C2-80-OPTIC (80° Wide Flood)	<input type="checkbox"/> C2-LS (Linear Spread Lens)		

1608 Nelson Ave. City of Industry, CA 91744 • Tel: 626-336-6511 • Fax: 626-336-6506 • www.cslighting.com
 ©2024 Creative Systems Lighting, a Division of The CSL Lighting, Inc. All rights reserved. Subject to change without notice.



NOT FOR CONSTRUCTION

1965 SKI TIME SQUARE DRIVE
 STEAMBOAT SPRINGS, CO 80487

REVISIONS:
 NO DATE DESCRIPTION

PROJECT NUMBER:
 123134.00
 DATE:
 11/06/2024
 ISSUED FOR:
 DP Submittal #3
 SHEET TITLE:
 BUILDING LIGHTING - CUTSHEETS - 1
 SHEET NUMBER

LI.300

WW1

UJE-30411 Jet 34 Square Surface



UJE-30411 Jet 34 Square Surface

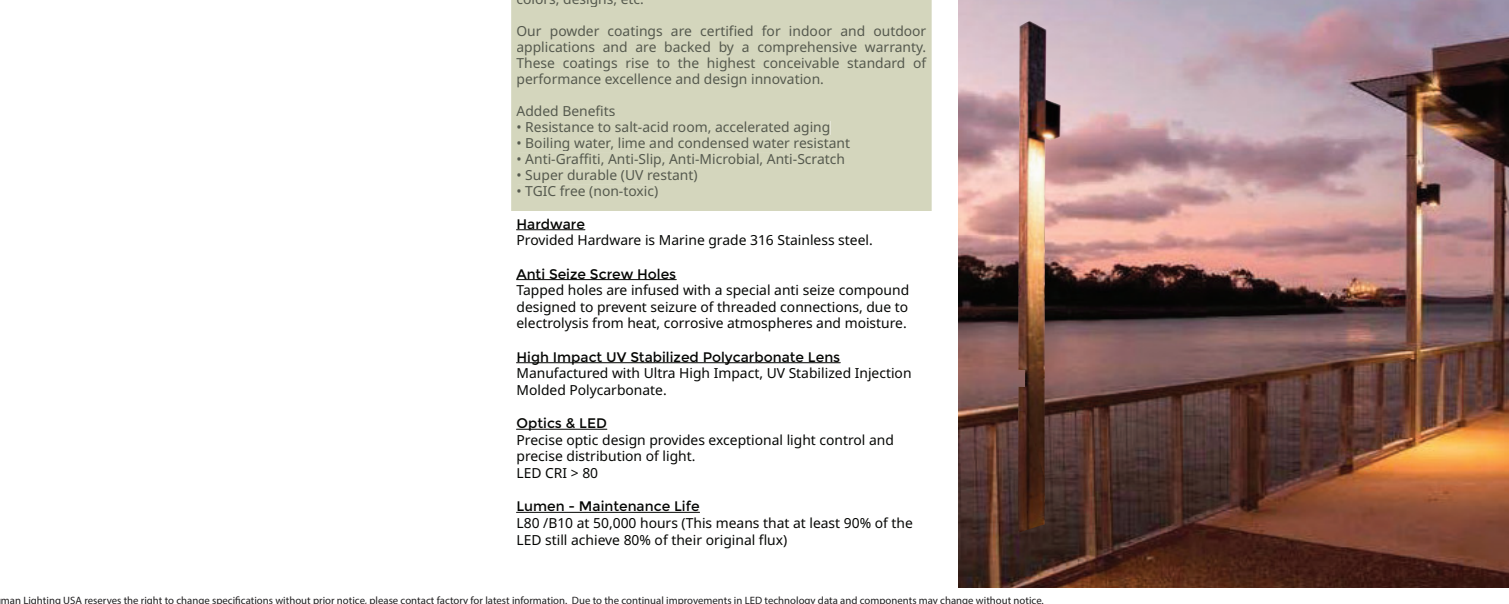
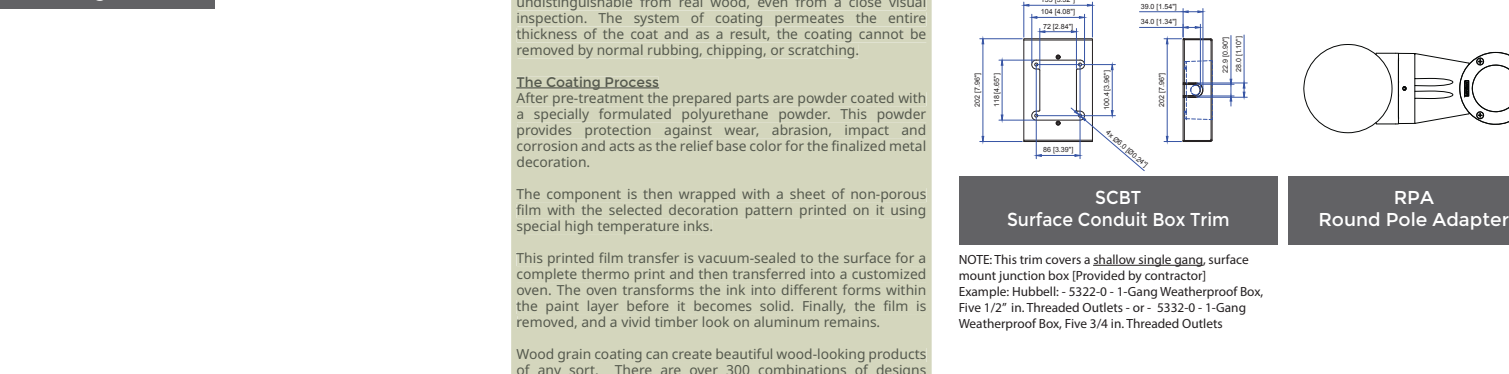


PROJECT: _____ DATE: _____
 QUANTITY: _____ TYPE: _____ NOTE: _____

ORDERING EXAMPLE || UJE - 30411 - 35w - M - W30 - 02 - 120/277v - Options

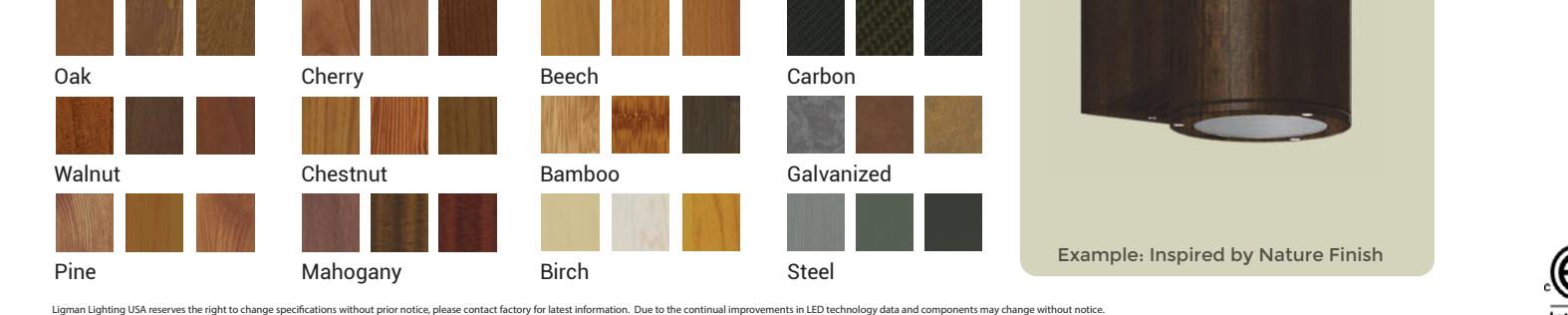
LAMP	BEAM	LED COLOR	FINISH COLOR	VOLTAGE
35w COB 425K Lumens	N - Narrow 13° M - Medium 20° W - Wide 40° VW - Very Wide 61°	W27 - 2700K W30 - 3000K W35 - 3500K W40 - 4000K	01 - BLACK RAL 9011 02 - DARK GREY RAL 7040 03 - WHITE RAL 9003 04 - METALLIC SILVER RAL 9006 05 - METTE SILVER RAL 9006 06 - LIGMAN BRONZE 07 - CUSTOM RAL	120/277v Other* Specify

INSPIRED BY NATURE FINISHES
 SW01 - OAK FINISH
 SW02 - WALNUT FINISH
 SW03 - PINE FINISH
 DF - DOUGLAS FIR FINISH
 CW - CHERRY WOOD FINISH
 NW - NATURAL WALNUT FINISH
 SU01 - CONCRETE FINISH
 SU02 - SOFT-CARE FINISH
 SU03 - STONE FINISH
 SU04 - CORTEN FINISH



ADDITIONAL OPTIONS
 NAT - Natatorium Rated
 SCBT - Surface Conduit Box Trim
 BEHC - Remote Emergency Battery Pack
 HCT - Custom Height
 DIM - 0-10V Dimming
 AMP - 4" Junction Box Mounting Plate
 FL - Frosted Lens
 RPA - Round Pole Adapter

More Custom Finishes Available Upon Request



© 2021 988 Wagner, Inc. All Rights Reserved. www.wagnercompanies.com LLSA-SUBM-07

WW2

UJE-30401

Jet 38 Square Surface Up/Downlight



Construction

Light fixture is in copper casing. Marine Grade 316 stainless steel. ADA compliant. High Pressure. The casting process provides excellent mechanical strength. Clean, detailed product lines and excellent heat dissipation.

Finish

Pre-painted and phosphate process that includes a clear protective epoxy resin and a zinc-nickel phosphate process before paint.

Finish

Pre-painted and phosphate process that includes a clear protective epoxy resin and a zinc-nickel phosphate process before paint.

Thermal Measurement

Light fixture is tested for its excellent mechanical strength and thermal dissipation properties. The quality control process includes a high-temperature test to ensure maximum lumens for up to 50,000 hours.

Scope/Support

Light fixture is tested for its excellent mechanical strength and thermal dissipation properties. The quality control process includes a high-temperature test to ensure maximum lumens for up to 50,000 hours.

Fast

Light fixture is tested for its excellent mechanical strength and thermal dissipation properties. The quality control process includes a high-temperature test to ensure maximum lumens for up to 50,000 hours.

Insulated by Nature Finishes

The Insulated by Nature Finishes is a unique system of decorative powder coating. Our natural decorative powder coating is made from natural mineral pigments and is applied to the surface of the light fixture. The system of coating provides the same protection of the coat and as a result, the coating cannot be removed by normal rubbing, wiping, or cleaning.

The Coating Process

The Insulated by Nature Finishes is a unique system of decorative powder coating. Our natural decorative powder coating is made from natural mineral pigments and is applied to the surface of the light fixture. The system of coating provides the same protection of the coat and as a result, the coating cannot be removed by normal rubbing, wiping, or cleaning.

Our powder coatings are certified for indoor and outdoor applications and are backed by a comprehensive warranty. These coatings are the highest concentration standard powder coatings available for use in lighting applications.

Added Benefits:

- High power, low wattage LED light source
- Being water, fire and corrosion resistant
- High impact resistant (IK07)
- High impact resistant (IK07)
- High impact resistant (IK07)

Hardware

Pre-painted hardware is Marine grade 316 stainless steel.

Anti-Static Screen Filter

Light fixture is tested for its excellent mechanical strength and thermal dissipation properties. The quality control process includes a high-temperature test to ensure maximum lumens for up to 50,000 hours.

Crystal Clear Lens (See Glass Lens)

Light fixture is tested for its excellent mechanical strength and thermal dissipation properties. The quality control process includes a high-temperature test to ensure maximum lumens for up to 50,000 hours.

Optical LED

Light fixture is tested for its excellent mechanical strength and thermal dissipation properties. The quality control process includes a high-temperature test to ensure maximum lumens for up to 50,000 hours.

Lenses - Multi-temperature Life

Light fixture is tested for its excellent mechanical strength and thermal dissipation properties. The quality control process includes a high-temperature test to ensure maximum lumens for up to 50,000 hours.

Cylindrical or rectangular form surface wall-mounted downlight. High performance, high output and numerous options ensure jet can be configured for any application.

Wall luminaires with a selection of light distributions and LED wattages, that include: narrow, medium, wide, very wide and elliptical light distributions. The jet offers a variety of beam spread options that facilitates wider spacing and even light distribution between the light fixtures. The up/down light versions can be manufactured using different beam spreads for the up and down options as well as different wattages upon request.

Mounting plate for 3" junction box is provided with the fixture. A 4" junction box mounting plate is available as an option, please specify. Matching surface mount conduit boxes are available as an option.

Custom round pole adapters can be manufactured to suit specific pole diameters for column mounting applications. Please contact the factory for more information.

For the cylindrical downlight option, see Jet 35, 37 and 51. For Type II, III & IV distributions, see Tango 29 to 32 surface wall luminaires. For RGBW options, see Jet 51 to 54.

Additional Options (Consult Factory For Pricing)

SCBT - Surface Conduit Box Trim
4" Octagonal 3-Box Mounting Plate
AMB - Round Pole Adapter

PROJECT		DATE	
QUANTITY		TYPE	
NOTE		NOTE	

ORDERING EXAMPLE || UJE - 30401 - 2x35w - M - W - W30 - 02 - 120/277v - Options

UJE-30401	LAMP	BEAM UP	BEAM DOWN	LED COLOR	FINISH COLOR	VOLTAGE
2x35w COB	N - Narrow 15'	N - Narrow 15'	W27 - 2700K	01 - BLACK RAL 9011	120/277v	
2x40w LED	M - Medium 20'	M - Medium 20'	W30 - 3000K	02 - DARK GREY RAL 7043	Other - Specify	
	W - Wide 40'	W - Wide 40'	W35 - 3500K	03 - WHITE RAL 9003		
	VW - Very Wide 60'	VW - Very Wide 60'	W40 - 4000K	04 - METALLIC SILVER RAL 9006		
				05 - MATTE SILVER RAL 9008		
				06 - LIGMAN BRONZE		
				07 - CUSTOM RAL		

ADDITIONAL OPTIONS

NAT - Natatorium Rated
SCBT - Surface Conduit Box Trim
DIM - 0-10v Dimming
RGBW - Remote Emergency Battery Pack

4" Octagonal 3-Box Mounting Plate
AMB - Round Pole Adapter

INSPIRED BY NATURE FINISHES

SW01 - OAK FINISH
SW02 - WALNUT FINISH
SW03 - PINE FINISH
DF - DOUGLASS PINE FINISH
CW - CHERRY WOOD FINISH
NW - NATIONAL WALNUT FINISH
SU01 - CONCRETE FINISH
SU02 - SOFTSCAPE FINISH
SU03 - STONE FINISH
SU04 - CORTEX FINISH

THIS IS AN ADDITIONAL COST FOR THESE FINISHES

More Custom Finishes Available Upon Request

Consult factory for pricing and lead times

Oak	Cherry	Beech	Carbon
Walnut	Chestnut	Bamboo	Galvanized
Pine	Mahogany	Birch	Steel

Examples Inspired by Nature Finish

WW5

UGI-31641

Gino 4 Type I, II, III, IV & V Downlight



UGI-31641

Gino 4 Type I, II, III, IV & V Downlight



Construction

Light fixture is in copper casing. Marine Grade 316 stainless steel. ADA compliant. High Pressure. The casting process provides excellent mechanical strength. Clean, detailed product lines and excellent heat dissipation.

Finish

Pre-painted and phosphate process that includes a clear protective epoxy resin and a zinc-nickel phosphate process before paint.

Finish

Pre-painted and phosphate process that includes a clear protective epoxy resin and a zinc-nickel phosphate process before paint.

Thermal Measurement

Light fixture is tested for its excellent mechanical strength and thermal dissipation properties. The quality control process includes a high-temperature test to ensure maximum lumens for up to 50,000 hours.

Scope/Support

Light fixture is tested for its excellent mechanical strength and thermal dissipation properties. The quality control process includes a high-temperature test to ensure maximum lumens for up to 50,000 hours.

Fast

Light fixture is tested for its excellent mechanical strength and thermal dissipation properties. The quality control process includes a high-temperature test to ensure maximum lumens for up to 50,000 hours.

Insulated by Nature Finishes

The Insulated by Nature Finishes is a unique system of decorative powder coating. Our natural decorative powder coating is made from natural mineral pigments and is applied to the surface of the light fixture. The system of coating provides the same protection of the coat and as a result, the coating cannot be removed by normal rubbing, wiping, or cleaning.

The Coating Process

The Insulated by Nature Finishes is a unique system of decorative powder coating. Our natural decorative powder coating is made from natural mineral pigments and is applied to the surface of the light fixture. The system of coating provides the same protection of the coat and as a result, the coating cannot be removed by normal rubbing, wiping, or cleaning.

Our powder coatings are certified for indoor and outdoor applications and are backed by a comprehensive warranty. These coatings are the highest concentration standard powder coatings available for use in lighting applications.

Added Benefits:

- High power, low wattage LED light source
- Being water, fire and corrosion resistant
- High impact resistant (IK07)
- High impact resistant (IK07)
- High impact resistant (IK07)

Hardware

Pre-painted hardware is Marine grade 316 stainless steel.

Anti-Static Screen Filter

Light fixture is tested for its excellent mechanical strength and thermal dissipation properties. The quality control process includes a high-temperature test to ensure maximum lumens for up to 50,000 hours.

Crystal Clear Lens (See Glass Lens)

Light fixture is tested for its excellent mechanical strength and thermal dissipation properties. The quality control process includes a high-temperature test to ensure maximum lumens for up to 50,000 hours.

Optical LED

Light fixture is tested for its excellent mechanical strength and thermal dissipation properties. The quality control process includes a high-temperature test to ensure maximum lumens for up to 50,000 hours.

Lenses - Multi-temperature Life

Light fixture is tested for its excellent mechanical strength and thermal dissipation properties. The quality control process includes a high-temperature test to ensure maximum lumens for up to 50,000 hours.

Facade-mounted building and area lighting range. Sleek, compact and expansive luminaire family with lighting packages and optics to address any need.

A range of small, square and rectangular wall mounted luminaires with options of upward or downward light distributions. Ideally suited to illuminate the wall and surfaces in front of wall and for light accents on vertical surfaces using high efficiency LEDs. The Gino is suitable for indoor and outdoor applications and provides a clean, visually appealing solution for small, unobtrusive wall mounted luminaires.

This luminaire is available in 2 different sizes and in combinations of down, up or up/down light distributions. The Gino 1 and Gino 2 have a decorative spike option for added lighting effects. The Gino 1 and 2 mounts over a 3" octagonal junction box, a 4" box cover plate is available upon request. Frosted or clear lenses are available.

To meet International Dark Sky criteria, 3000K or warmer LEDs must be selected and luminaire fix mounted (<= 15' allowable to permit leveling).

Additional Options (Consult Factory For Pricing)

NAT - Natatorium Rated
F - Frosted Lens
SCBT - Surface Conduit Box Trim
4" Mounting Plate for 4" Junction Box
AMB - Turbidity Friendly Amber LED
DIM - 0-10v Dimming

PROJECT		DATE	
QUANTITY		TYPE	
NOTE		NOTE	

ORDERING EXAMPLE || UGI - 31641 - 10w - T2 - W30 - 02 - 120/277v - Options

UGI-31641	LAMP	BEAM	LED COLOR	FINISH COLOR	VOLTAGE
10w LED	T1 - Type I Distribution - 780m	W27 - 2700K	01 - BLACK RAL 9011	120/277v	
	T2 - Type II Distribution - 790m	W30 - 3000K	02 - DARK GREY RAL 7043	Other - Specify	
	T3 - Type III Distribution - 820m	W35 - 3500K	03 - WHITE RAL 9003		
	T4 - Type IV Distribution - 820m	W40 - 4000K	04 - METALLIC SILVER RAL 9006		
	M - Medium 30'		05 - MATTE SILVER RAL 9008		
	W - Wide 50'		06 - LIGMAN BRONZE		
	VW - Very Wide 60'		07 - CUSTOM RAL		
	EW - Extra Wide 98' x 1860m				

ADDITIONAL OPTIONS

NAT - Natatorium Rated
F - Frosted Lens
SCBT - Surface Conduit Box Trim
4" Mounting Plate for 4" Junction Box
AMB - Turbidity Friendly Amber LED
DIM - 0-10v Dimming

INSPIRED BY NATURE FINISHES

SW01 - OAK FINISH
SW02 - WALNUT FINISH
SW03 - PINE FINISH
DF - DOUGLASS PINE FINISH
CW - CHERRY WOOD FINISH
NW - NATIONAL WALNUT FINISH
SU01 - CONCRETE FINISH
SU02 - SOFTSCAPE FINISH
SU03 - STONE FINISH
SU04 - CORTEX FINISH

THIS IS AN ADDITIONAL COST FOR THESE FINISHES

CITY OF FLAGSTAFF & TURTLE FRIENDLY COMPLIANT

Light fixture is tested for its excellent mechanical strength and thermal dissipation properties. The quality control process includes a high-temperature test to ensure maximum lumens for up to 50,000 hours.

Hardware

Pre-painted hardware is Marine grade 316 stainless steel.

Anti-Static Screen Filter

Light fixture is tested for its excellent mechanical strength and thermal dissipation properties. The quality control process includes a high-temperature test to ensure maximum lumens for up to 50,000 hours.

Crystal Clear Lens (See Glass Lens)

Light fixture is tested for its excellent mechanical strength and thermal dissipation properties. The quality control process includes a high-temperature test to ensure maximum lumens for up to 50,000 hours.

Optical LED

Light fixture is tested for its excellent mechanical strength and thermal dissipation properties. The quality control process includes a high-temperature test to ensure maximum lumens for up to 50,000 hours.

Lenses - Multi-temperature Life

Light fixture is tested for its excellent mechanical strength and thermal dissipation properties. The quality control process includes a high-temperature test to ensure maximum lumens for up to 50,000 hours.

More Custom Finishes Available Upon Request

Consult factory for pricing and lead times

Oak	Cherry	Beech	Carbon
Walnut	Chestnut	Bamboo	Galvanized
Pine	Mahogany	Birch	Steel

Example Inspired by Nature Finish

WW6

ULEE-30021

Leeds 6 Large Surface Downlight



Construction

Light fixture is in copper casing. Marine Grade 316 stainless steel. ADA compliant. High Pressure. The casting process provides excellent mechanical strength. Clean, detailed product lines and excellent heat dissipation.

Finish

Pre-painted and phosphate process that includes a clear protective epoxy resin and a zinc-nickel phosphate process before paint.

Finish

Pre-painted and phosphate process that includes a clear protective epoxy resin and a zinc-nickel phosphate process before paint.

Thermal Measurement

Light fixture is tested for its excellent mechanical strength and thermal dissipation properties. The quality control process includes a high-temperature test to ensure maximum lumens for up to 50,000 hours.

Scope/Support

Light fixture is tested for its excellent mechanical strength and thermal dissipation properties. The quality control process includes a high-temperature test to ensure maximum lumens for up to 50,000 hours.

Fast

Light fixture is tested for its excellent mechanical strength and thermal dissipation properties. The quality control process includes a high-temperature test to ensure maximum lumens for up to 50,000 hours.

Insulated by Nature Finishes

The Insulated by Nature Finishes is a unique system of decorative powder coating. Our natural decorative powder coating is made from natural mineral pigments and is applied to the surface of the light fixture. The system of coating provides the same protection of the coat and as a result, the coating cannot be removed by normal rubbing, wiping, or cleaning.

The Coating Process

The Insulated by Nature Finishes is a unique system of decorative powder coating. Our natural decorative powder coating is made from natural mineral pigments and is applied to the surface of the light fixture. The system of coating provides the same protection of the coat and as a result, the coating cannot be removed by normal rubbing, wiping, or cleaning.

Our powder coatings are certified for indoor and outdoor applications and are backed by a comprehensive warranty. These coatings are the highest concentration standard powder coatings available for use in lighting applications.

Added Benefits:

- High power, low wattage LED light source
- Being water, fire and corrosion resistant
- High impact resistant (IK07)
- High impact resistant (IK07)
- High impact resistant (IK07)

Hardware

Pre-painted hardware is Marine grade 316 stainless steel.

Anti-Static Screen Filter

Light fixture is tested for its excellent mechanical strength and thermal dissipation properties. The quality control process includes a high-temperature test to ensure maximum lumens for up to 50,000 hours.

Crystal Clear Lens (See Glass Lens)

Light fixture is tested for its excellent mechanical strength and thermal dissipation properties. The quality control process includes a high-temperature test to ensure maximum lumens for up to 50,000 hours.

Optical LED

Light fixture is tested for its excellent mechanical strength and thermal dissipation properties. The quality control process includes a high-temperature test to ensure maximum lumens for up to 50,000 hours.

Lenses - Multi-temperature Life

Light fixture is tested for its excellent mechanical strength and thermal dissipation properties. The quality control process includes a high-temperature test to ensure maximum lumens for up to 50,000 hours.

Clean, beautiful, surface wall fixtures with class leading performance. Minimalist form, yet the most powerful and flexible lighting tool of its type, offering packages up to 4000 lumens and microVos technology.

A range of small, square and rectangular, ADA compliant wall mounted luminaires with options of upward or downward light distributions. Ideally suited to illuminate the wall and surfaces in front of wall and for light accents on vertical surfaces using high efficiency LEDs. The Leeds is suitable for indoor and outdoor applications and provides a clean, visually appealing solution for small, unobtrusive wall mounted luminaires.

This luminaire is available in 3 different sizes and in combinations of down, up or up/down light distributions.

This fixture utilizes microVos technology, meaning the ability to do Type I,II,III,IV & V distributions as well as hybrid distributions to suit the designer's requirements.

Using the microVos optics allows for very wide spacing to mounting height ratios, while still providing perfect uniformity and code compliant light levels.

To meet International Dark Sky criteria, 3000K or warmer LEDs must be selected and luminaire fix mounted (<= 15' allowable to permit leveling).

Additional Options (Consult Factory For Pricing)

SCBT - Surface Conduit Box Trim
4" Octagonal 3-Box Mounting Plate
AMB - Round Pole Adapter

PROJECT		DATE	
QUANTITY		TYPE	
NOTE		NOTE	

ORDERING EXAMPLE | ULEE - 30021 - 20w - T2 - W30 - 02 - 120/277v - Options

ULEE-30021	LAMP	BEAM	LED COLOR	FINISH COLOR	VOLTAGE
20w LED	T1 - Type I Distribution	W27 - 2700K	01 - BLACK RAL 9011	120/277v	
2422 Lumens	T2 - Type II Distribution	W30 - 3000K	02 - DARK GREY RAL 7043	Other - Specify	
	T3 - Type III Distribution	W35 - 3500K	03 - WHITE RAL 9003		
	T4 - Type IV Distribution	W40 - 4000K	04 - METALLIC SILVER RAL 9006		
	M - Medium 30'		05 - MATTE SILVER RAL 9008		
	W - Wide 50'		06 - LIGMAN BRONZE		
	EW - Extra Wide 109' x 102'		07 - CUSTOM RAL		

ADDITIONAL OPTIONS

NAT - Natatorium Rated
SCBT - Surface Conduit Box Trim
F - Frosted Lens
DIM - 0-10v Dimming

4" Octagonal 3-Box Mounting Plate
AMB - Round Pole Adapter
HCL - Honeycomb Louver

INSPIRED BY NATURE FINISHES

SW01 - OAK FINISH
SW02 - WALNUT FINISH
SW03 - PINE FINISH
DF - DOUGLASS PINE FINISH
CW - CHERRY WOOD FINISH
NW - NATIONAL WALNUT FINISH
SU01 - CONCRETE FINISH
SU02 - SOFTSCAPE FINISH
SU03 - STONE FINISH
SU04 - CORTEX FINISH

THIS IS AN ADDITIONAL COST FOR THESE FINISHES

More Custom Finishes Available Upon Request

Consult factory for pricing and lead times

Oak	Cherry	Beech	Carbon
Walnut	Chestnut	Bamboo	Galvanized
Pine	Mahogany	Birch	Steel

Example Inspired by Nature Finish

BB1

Mac II Wood Body LED Bollard

struttura

struttura

FEATURES:

- High power, low wattage LED light module
- Solid glulam wood construction
- Concealed anchor bolt base and mounting hardware

SPECIFICATIONS:

HOUSING Solid wood bollard is assembled through glulam construction and precision machined using CNC technology. Adhesive complies with ASTM D-2559 glulam construction specifications for extreme weather conditions and is waterproof and rated for wet or dry use exposure.

DRIVER Component and baseplate concealed within metal base portion with tamper-resistant hardware. Anchor bolt includes (4) hot dip galvanized anchor bolts and fasteners and a rigid concrete pour template.

ELECTRICAL Powered by a Class P 120-277VAC primary integral power supply. Standard output is 12V. Fixture is internally protected to the electrical splice box located in the fixture base. System is 0-10v dimmable. Minimum -40°C operating temperature.

OPTICAL SYSTEM LED boards have solderless connections for field upgradability. Available in 2700K, 3000K, 3500K and 4000K color temperatures with 90° CRI. Optics are UV resistant molded PMMA in Type III, IV, and V distributions. Consult factory for additional lumen output, CCT, and optical distribution information.

FINISHES AND MATERIALS Woods are finished with a low VOC waterborne moisture resistant finish containing UV and mildew inhibitors. All exterior aluminum parts are polyester powder coat painted. [Care and Maintenance](#)

ORDERING GUIDE: EXAMPLE: MAC II-42-L75D-S-55-C7-UNV-STD

MAC II	1	2	3	4	5	6	7	8	9
	Series	Overall Height	Color Temperature	Light Source	Distribution	Type III Rastable	UVN	Special	Metal Finish
	42	32"	L27	50	C7	3	8	9	STD
		42"	L30	50	C7	4	8	9	STD
		42"	L35	50	C7	5	8	9	STD
		42"	L40	50	C7	6	8	9	STD
		42"	AMB	50	C7	7	8	9	STD

LISTINGS & RATINGS Luminaire CSA listed according to CSA C22.2 No. 250.810-AL Standard 198. Suitable for wet locations. LM-80 reported L70 > 60,500 hours and calculated L70 > 154,000 hours.

HARDWARE Fasteners are stainless steel. Anchor bolt kits are hot dip galvanized.

1 Consult factory for additional output options.
2 Type III Rastable optics requires custom to be oriented so that the short side is towards the sidewalk.
3 Product specification sheets subject to change.

©2023 STRUCTURA, INC. 63



1965 SKI TIME SQUARE DRIVE
STEAMBOAT SPRINGS, CO 80487

REVISIONS:
NO DATE DESCRIPTION

PROJECT NUMBER:
123134.00

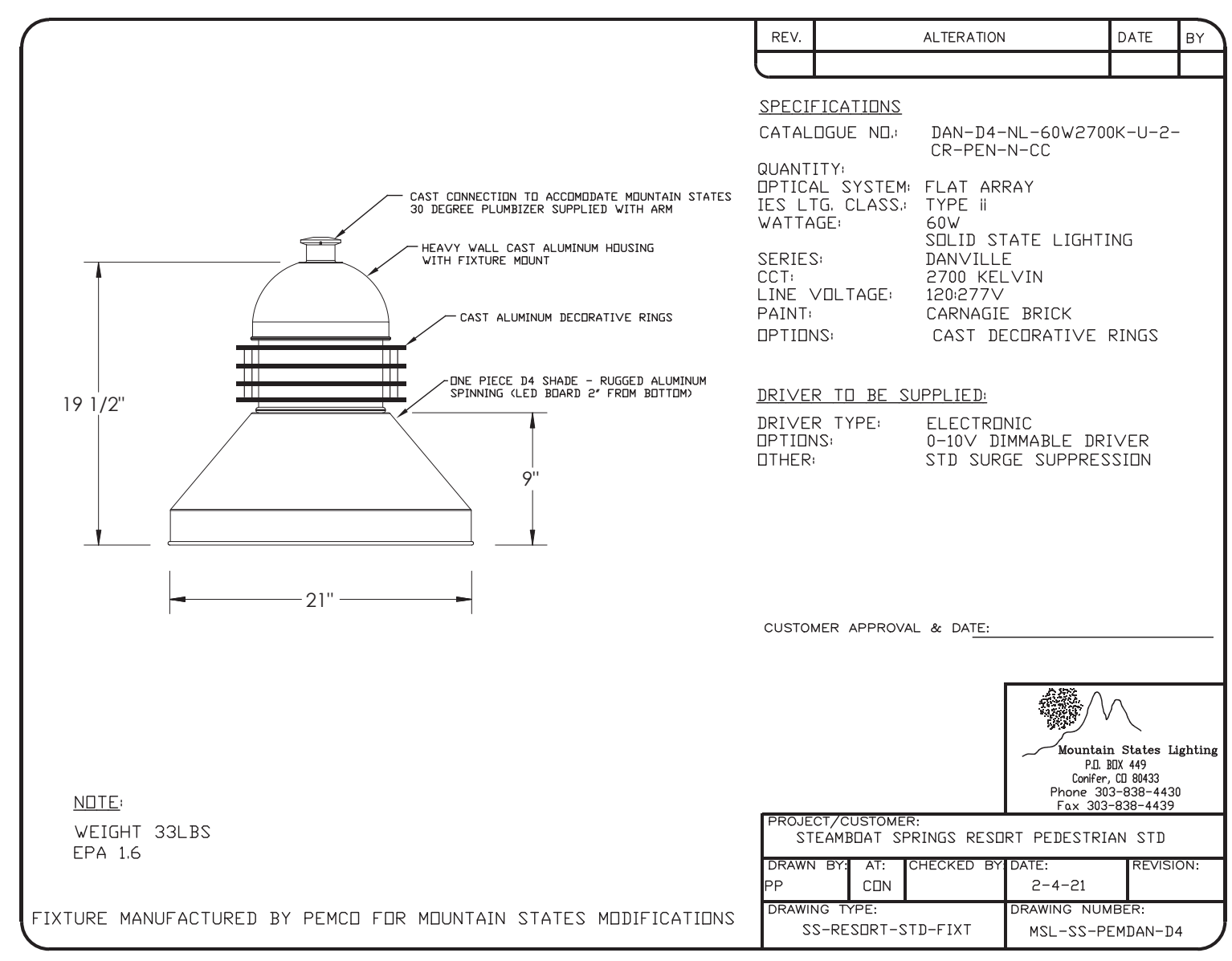
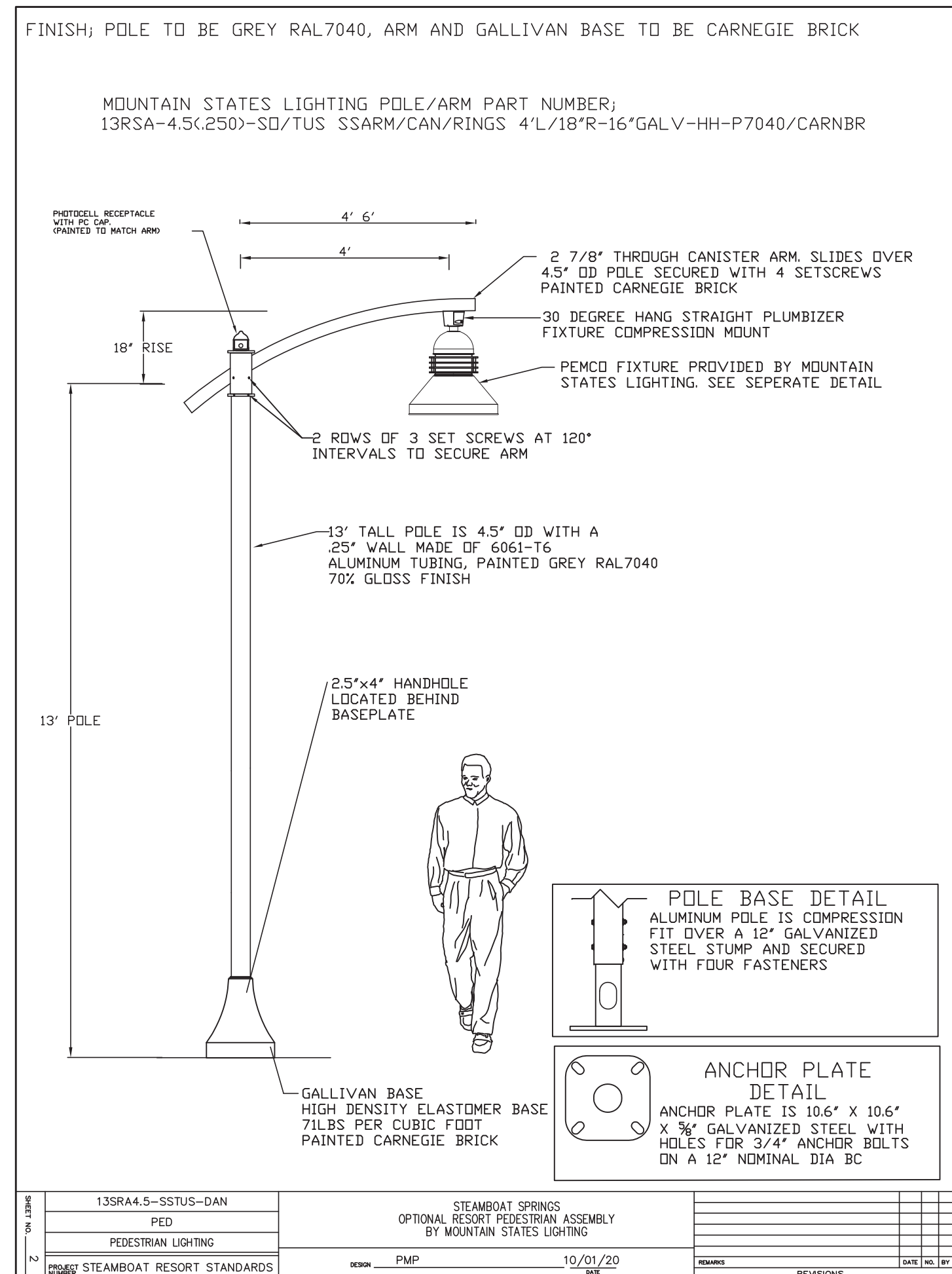
DATE:
11/06/2024

ISSUED FOR:
DP Submittal #3

SHEET TITLE:
BUILDING LIGHTING - CUTSHEETS - 2

SHEET NUMBER
LI.301

PP1



PP2 AND PP2A

Lineal LED Luminaire

STRUCTURA

FIXTURE TYPE _____

PROJECT NAME _____

Lineal mounted on Structura 18 pole

Lineal mounted on Structura 18 pole

Lineal mounted on Structura 18 pole

SPECIFICATIONS:

CONSTRUCTION: Seamless aluminum housing comprised of 6005A-T6 extrusion and 6061-T6 end plates. Gas-filled aluminum electrical access cover attached with captive stainless steel hardware and safety cable.

ELECTRICAL: Integral Class P, 120-277V or 347-480V, dimmable constant current driver. Luminaire is pre-wired with water-tight 5 conductor 18 gauge 5-EED0W whip. 30kA surge suppression is standard with optional external 20kA surge suppression. Operating temperature of -40°C to 50°C.

OPTICAL SYSTEM: LED boards have solderless connections for field upgradability. Available in CCT of 2700, 3000, 3500, and 4000K. >80 CRI. Optics are UV resistant molded PMMA in Type II and IV distributions. Consult factory for additional lumen output, CCT, and optical distribution options.

CONTROLS: Dimming through 0-10V input is standard. Available with integral motion sensor with photocell providing on/off and full light to dim control. Also available with wireless smart city control. See [SmartCity](#) control documentation for more information.

FINISHES: All exterior aluminum parts are polyester powder coat painted to meet AAMA 2604 standards. See Structura's finish options for available colors. [Care and Maintenance](#)

LISTINGS & RATINGS: Luminaire CSA listed according to CSA C22.2 No. 250.0-08 (UL Standard 1588). Suitable for wet locations. UL-94 test reported L70 > 90,000 hours and calculated L70 > 100,000 hours. Bug rating: BI-UO-GI, IP65 rated.

WARRANTY: 5-year warranty on LED and drivers.

mA	Wattage	CRI	2700K Lumen ⁽¹⁾	2700K Efficacy	3000K Lumen ⁽²⁾	3000K Efficacy	3500K Lumen ⁽²⁾	3500K Efficacy	4000K Lumen ⁽²⁾	4000K Efficacy	EPA	Weight
750	40	>80	4164	103.3	4266	105.9	4437	110.1	4620	114.6	0.819 ⁽³⁾	12.3lbs.
1500	76	>80	8327	109.6	8532	112.3	8857	116.8	9240	121.6	1.001 ⁽³⁾	14.2lbs.
1950	104	>80	10825	104.0	11091	106.6	11555	110.9	12012	115.5	1.191 ⁽³⁾	16.2lbs.
3000	152	>80	16653	109.6	17063	112.3	17745	116.7	18470	121.6	1.551 ⁽³⁾	20.7lbs.

ORDERING GUIDE: EXAMPLE: LIN-M2150-LIN-V-L30-4-CL-5P-WC-M5/L-3-STD

LIN	1	2	3	4	5	6	7	8	9
1	Series	2	Output ⁽²⁾	3	Voltage	4	UVW	5	6
2	Color Temperature ⁽²⁾	7	Mounting	8	Options	9	Special	10	11
3	2700K ⁽¹⁾	3000K ⁽¹⁾	3500K ⁽¹⁾	4000K ⁽¹⁾	Structure Pole ⁽⁴⁾	Square steel pole by Structura ⁽⁵⁾	Pole by Others	HSS	SP
4	120-277V	347-480V	Type IV	Type V	House-side Shield	5-Pin Receptacle	Hubbell NX controls	Wireless Control ⁽⁷⁾	Standard
5	See color options on Finishes technical sheet	Custom Color	Standard	Standard	Standard	Standard	Standard	Standard	Standard

1. Lumen output based upon Type II distribution.
2. Contact factory for alternative output, CCT, and distribution options.
3. CCT of 2700K or 3000K color temperature required for DarkSky Approved.
4. Structure pole specification sheet must be completed showing mounting locations and quantities as a separate item.
5. Specify steel pole on page 108 as a separate item.
6. Specify coverage pattern (see page 107 for detail). Requires wireless handheld configuration tool.
7. Specify Wireless site gateway controller must be ordered separately. Please contact factory for design assistance.

NOT FOR CONSTRUCTION

PP3

UOD-5017

Odessa 15 Large Floodlight Threaded Knuckle Mount

Construction: Aluminum Casting. Less than 1% copper content - Marine Grade 6066 extruded & LME Aluminum High Pressure die casting provides excellent mechanical strength, clean detailed product lines and excellent heat dissipation.

Pre-paint: 3-step degrease and phosphate process that includes descaling and etching as well as a zinc and nickel phosphate process before product painting.

Memory Retention - Silicon Gasket: Provided with special injection molded "fit for purpose" long life high temperature memory retention silicon gaskets. Maintains the gaskets exact profile and seal over years of use and compression.

Thermal management: LME Aluminum is used for its excellent mechanical strength and thermal dissipation properties in low and high ambient temperatures. The superior thermal heat sink design by Ligman used in conjunction with the driver controls thermal stress to ensure maximum luminous flux output, as well as providing long LED service life and ensuring less than 10% lumen depreciation at 50,000 hours.

Surge Suppression: Standard 15kV surge suppressor provided with all fixtures.

BUC Rating: BS (U) - G0

Finishing: All Ligman products go through an extensive finishing process that includes testing to improve paint adherence.

Paint: UV Stabilized 4.0Ml thick powder coat paint and baked at 200 Deg C. This process ensures that Ligman products can withstand harsh environments. Rated for use in rainstorms.

Hardware: Provided Hardware is Marine grade 316 Stainless steel.

Anti Seize Screw Holes: Tapped holes are infused with a special anti seize compound designed to prevent seizure of threaded connections, due to electrolysis from hot, corrosive atmospheres and moisture.

Crystal Clear Low Iron Glass Lens: Provided with tempered, impact resistant crystal clear low iron glass ensuring no green glass tinge.

Optics & LED: Precision optic design provides exceptional light control and precise distribution of light. LED CRI > 80

Lumen - Maintenance Life: L70 @10 or 50,000 hours (This means that at least 90% of the LED still achieve 80% of their original flux)

UOD-5017

Odessa 15 Large Floodlight Threaded Knuckle Mount

Construction: Aluminum Casting. Less than 1% copper content - Marine Grade 6066 extruded & LME Aluminum High Pressure die casting provides excellent mechanical strength, clean detailed product lines and excellent heat dissipation.

Pre-paint: 3-step degrease and phosphate process that includes descaling and etching as well as a zinc and nickel phosphate process before product painting.

Memory Retention - Silicon Gasket: Provided with special injection molded "fit for purpose" long life high temperature memory retention silicon gaskets. Maintains the gaskets exact profile and seal over years of use and compression.

Thermal management: LME Aluminum is used for its excellent mechanical strength and thermal dissipation properties in low and high ambient temperatures. The superior thermal heat sink design by Ligman used in conjunction with the driver controls thermal stress to ensure maximum luminous flux output, as well as providing long LED service life and ensuring less than 10% lumen depreciation at 50,000 hours.

Surge Suppression: Standard 15kV surge suppressor provided with all fixtures.

BUC Rating: BS (U) - G0

Finishing: All Ligman products go through an extensive finishing process that includes testing to improve paint adherence.

Paint: UV Stabilized 4.0Ml thick powder coat paint and baked at 200 Deg C. This process ensures that Ligman products can withstand harsh environments. Rated for use in rainstorms.

Hardware: Provided Hardware is Marine grade 316 Stainless steel.

Anti Seize Screw Holes: Tapped holes are infused with a special anti seize compound designed to prevent seizure of threaded connections, due to electrolysis from hot, corrosive atmospheres and moisture.

Crystal Clear Low Iron Glass Lens: Provided with tempered, impact resistant crystal clear low iron glass ensuring no green glass tinge.

Optics & LED: Precision optic design provides exceptional light control and precise distribution of light. LED CRI > 80

Lumen - Maintenance Life: L70 @10 or 50,000 hours (This means that at least 90% of the LED still achieve 80% of their original flux)

ADDITIONAL OPTIONS

DIM - 0-10V Dimming

NAT - Nataratorium Rated

AS431 - Anti Glare Visor

AS184 - Linear Spread Lens

AS431 - Anti Glare Louver

AS432 - Honeycomb Louver

TXM - Threaded Knuckle Mount

YKE - Yoke Mount

DICHROIC COLOR FILTERS

RED - Red Lens

BL - Blue Lens

AM - Amber Lens

GR - Green Lens

TREE STRAP

ODTS17 - 11" to 17" DIA

ODTS21 - 16" to 21" DIA

ODTS27 - 21" to 27" DIA

ODTS32 - 26" to 32" DIA

POLE CLAMP

PC4 - 4" Clamp

PC4.5 - 4.5" Clamp

PC5 - 5" Clamp

PC5.5 - 5.5" Clamp

ORDERING EXAMPLE || UOD-50171 - 70w - M - W30 - 03 - 120/277V

UOD-5017X	LAMP	BEAM	LED COLOR	FINISH COLOR	VOLTAGE
UOD-50171	70w COB 6000 Lumens	N - Narrow 21° M - Medium 35° W - Wide 48° VW - Very Wide 70°	W30 - 2700K W30 - 3000K W30 - 3500K W30 - 4000K	01 - BLACK RAL 9011 02 - DARK GREY RAL 7043 03 - WHITE RAL 9003 04 - METALLIC SILVER RAL 9006 05 - MATTE SILVER RAL 9006 06 - LIGMAN BRONZE 07 - CUSTOM RAL	120/277V Other - Specify
UOD-50172	55w COB 4350 Lumens				
UOD-50173	68w COB 6880 Lumens				
UOD-50174	50w COB 5455 Lumens				

ODTS - Odessa Treestrap Options

Attach Odessa Floodlight

Attach Odessa Floodlight

Junction Box use same box as GFCI box in pole

ODTS17 - 11" to 17" Treestrap

ODTS21 - 16" to 21" Treestrap

ODTS27 - 21" to 27" Treestrap

ODTS32 - 26" to 32" Treestrap

SL1

CASA EW71412

WALL

EW71412-BK Black

EW71412-GY Gray

Feature Dimensions: W12" x H4.12" x D1"

Light Source: AC LED Module

Wattage: 21W

Total Lumens: 1600lm

Disturbance Lumens: 84-65lm GV-85lm

Voltage: 120V

Color Temperature: 3000K

CRI (Ra): 90CR

Optional Color Temp: 2700K - 5000K Available Minimum Order Quantities Apply

LED Based Life: 50,000 hours

Dimming: 100% - 10% ELV Dimmer (Not Included)

Glass Detail: Clear Glass

ADA Compliant: Yes

Location: Wet

Paint Finish: 8002, 091L

PROJECT

DESCRIPTION

This family of exterior wall-mounted fixtures is available in a variety of geometric forms: circle, square, and two different rectangular configurations. Light is directed downward from a recess, and the incline allows the glow to radiate gradually. Versatility then and ideal for egress, courtesy, and grace lighting.

COMMENTS

ADDITIONAL OPTIONS

DIM - 0-10V Dimming

NAT - Nataratorium Rated

AS431 - Anti Glare Visor

AS184 - Linear Spread Lens

AS431 - Anti Glare Louver

AS432 - Honeycomb Louver

TXM - Threaded Knuckle Mount

YKE - Yoke Mount

DICHROIC COLOR FILTERS

RED - Red Lens

BL - Blue Lens

AM - Amber Lens

GR - Green Lens

TREE STRAP

ODTS17 - 11" to 17" DIA

ODTS21 - 16" to 21" DIA

ODTS27 - 21" to 27" DIA

ODTS32 - 26" to 32" DIA

POLE CLAMP

PC4 - 4" Clamp

PC4.5 - 4.5" Clamp

PC5 - 5" Clamp

PC5.5 - 5.5" Clamp

1965 SKI TIME SQUARE DRIVE

STEAMBOAT SPRINGS, CO 80487

REVISIONS:

NO	DATE	DESCRIPTION

PROJECT NUMBER: 123134.00

DATE: 11/06/2024

ISSUED FOR: DP Submittal #3

SHEET TITLE: BUILDING LIGHTING - CUTSHEETS - 3

SHEET NUMBER: LI.302