

# 1965 SKI TIME SQUARE DRIVE

STEAMBOAT SPRINGS, CO 80487

## VOLUME 1

### SHEETS INCLUDED IN THIS SECTION

#### EXISTING CONDITIONS PLAN

C.003	EXISTING CONDITIONS EXHIBIT
C.004	ANTICIPATED CONDITIONS EXHIBIT

#### SITE PLAN

L.100.1	SITE ILLUSTRATIVE PLAN - SUMMER
L.100.2	SITE ILLUSTRATIVE PLAN - WINTER
L.101	SITE PLAN

#### ARCHITECTURAL DRAWINGS

G.001	ENTITLEMENTS COVER SHEET
G.020	PERSPECTIVE RENDERINGS
A.099	LEVEL P2 - FLOOR PLAN
A.100	LEVEL P1 - FLOOR PLAN
A.101	LEVEL 1 - FLOOR PLAN
A.102	LEVEL 2 - FLOOR PLAN
A.103	LEVEL 3 - FLOOR PLAN
A.104	LEVEL 4 - FLOOR PLAN
A.105	LEVEL 5 - FLOOR PLAN
A.106	LEVEL 6 - FLOOR PLAN
A.107	LEVEL 7 - FLOOR PLAN
A.108	LEVEL 8 - FLOOR PLAN
A.109	LEVEL 8 MEZZANINE - FLOOR PLAN
A.110	ROOF PLAN
A.111	ROOF SLOPE DIAGRAM
A.112	SUN STUDY
A.201	BUILDING ELEVATION - NORTH
A.202	BUILDING ELEVATION - EAST
A.203	BUILDING ELEVATION - SOUTH
A.204	BUILDING ELEVATION - WEST
A.205	BUILDING ELEVATION - WEST COURTYARD
A.206	BUILDING ELEVATION - EAST COURTYARD
A.207	ENLARGED BUILDING ELEVATION - NORTH RETAIL
A.208a	EXTERIOR AMENITY PUBLIC VS PRIVATE
A.208b	SOUTH PROMENADE RENDERINGS
A.208c	SOUTH PROMENADE RENDERINGS
A.208d	SOUTH PROMENADE RENDERINGS
A.210	GLAZING PERCENTAGE DIAGRAM
A.211	GLAZING PERCENTAGE DIAGRAM
A.212	BUILDING HEIGHTS
A.213	BUILDING STEPBACKS
A.214	BUILDING STEPBACKS
A.215	BUILDING STEPBACKS
A.301	SITE SECTIONS
A.310	BUILDING AXONS

#### LANDSCAPE PLAN

L.301.1	A4 DIV-1.401 & 419 - WATER BODY SETBACK / FLOOD DAMAGE PREVENTION DIAGRAM
L.301.2	A4 DIV-1.406 - OFF STREET PARKING
L.301.3	A4 DIV-1.407 - FIRE ACCESS DIAGRAM
L.301.4	A4 DIV-1.407.408 - OFF STREET LOADING / REFUSE MANAGEMENT
L.302.1	A4 DIV-1.409 - SNOW MANAGEMENT DIAGRAM
L.302.2	A4 DIV-1.414 & 417 - MULTI-MODE FACILITIES / COMPLETE STREETS
L.302.3	A4 DIV-1.415 - CLEAR VISION SETBACKS
L.302.4	A4 DIV-1.416 - RETAINING WALLS
L.303.1	A4 DIV-1.440 - ENTRY POINT DIAGRAM
L.303.2	A4 DIV-1.402 - LANDSCAPING DIAGRAM
L.303.3	A2.216.B - LOT COVERAGE DIAGRAM
L.304.1	EASEMENT DIAGRAM
L.304.2	A4 DIV-2.440.C.1.b - PUBLIC VS. PRIVATE
L.304.3	MMMP - ADA REALM DIAGRAM

#### GRADING PLAN

C.420	EAST PROMENADE CENTERLINE PROFILE
L.201	GRADING PLAN
L.201.1-6	SITE SECTIONS
L.202	SITE PROFILES

#### UTILITY PLAN

C.200	UTILITY PLAN
C.220	PRIVATE FIRE HYDRANT PLAN & PROFILE
C.221	FIRE SUPPRESSION & DOMESTIC SERVICE PLAN & PROFILE

#### LIGHTING PLAN

J.000	LIGHTING SHEET INDEX
J.100	A4 DIV-1.406 - SITE LIGHTING PHOTOMETRICS
J.101	POOL LIGHTING PHOTOMETRICS
J.200	BUILDING ELEVATIONS - NORTH
J.201	BUILDING ELEVATIONS - EAST
J.202	BUILDING ELEVATIONS - SOUTH
J.203	BUILDING ELEVATIONS - WEST
J.300	BUILDING LIGHTING - CUT SHEETS -1
J.301	BUILDING LIGHTING - CUT SHEETS -2
J.302	BUILDING LIGHTING - CUT SHEETS -3

#### DRAINAGE PLAN

C.300	DRAINAGE PLAN
-------	---------------

#### FIRE CODE ANALYSIS

L.401	FIRE CODE ANALYSIS
-------	--------------------

# LIGHTING PLAN

## DEVELOPMENT PLAN



10/3/2024 3:16:27 PM Autodesk Docs/TRC\_THB123134\_1965 STS\_THUNDERHEAD\_L123 REV2.rvt

CONTROL DEVICE LEGEND		LIGHTING SYMBOL LEGEND	
<div><div>ZONE</div><div>XX</div><div>XXXX</div></div>	CONTROL ZONE TAG	<div><div></div><div></div></div>	RECESSED DOWNLIGHT
<div><div>\$</div></div>	LOCAL SWITCH	<div><div></div><div></div></div>	RECESSED ADJUSTABLE DOWNLIGHT
<div><div></div></div>	CONTROL STATION	<div><div></div><div></div></div>	RECESSED WALLWASHER
<div><div></div></div>	CONTROL RECEPTACLE STATION	<div><div></div><div></div></div>	RECESSED SHOWER LIGHT
<div><div>DEVICE</div><div>ID</div></div>	CONTROL DEVICE TAG	<div><div></div><div></div></div>	PENDANT OR CLOSE-CEILING MOUNTED FIXTURE
<div><div>DC DIM</div><div>TRANS</div></div>	LED DIMMER CONTROLLER TO TRANSFORMER/POWER SUPPLY. REQUIRES 0-10V CONTROL SIGNAL.	<div><div></div><div></div></div>	SURFACE-MOUNTED ACCENT LIGHT
<div><div>CLD</div><div>WATTAGE LIMIT</div></div>	TRACK CURRENT LIMITER	<div><div></div><div></div></div>	TRACK MOUNTED ACCENT LIGHT
	KEYNOTE	<div><div></div><div></div></div>	WALL MOUNTED FIXTURES
	REVISIONS	<div><div></div><div></div></div>	RECESSED 2 X 4, 2 X 2
<div>FIXTURE NAMING LEGEND</div> <div>D 1 F A</div> <div>A - ADJUSTABLE D - DOWNLIGHT/WALLWASH F - FLOURESCENT L - LINEAR LED P - PENDANT S - SURFACE T - TRACK U - INGRADE UPLIGHT V - LOW VOLTAGE STRIP W - SCONCE X - FIBER Z - MISC/SPECIALTY DP - DECORATIVE PENDANT DW - DECORATIVE WALL MOUNT SL - STEPLIGHTS TH - THEATRICAL FIXTURES AA - EXTERIOR ACCENT LIGHT BB - EXTERIOR BOLLARD PP - POLE UU - EXTERIOR IN-GRADE UPLIGHT</div> <div>F - FLOOD (36 DEGREE - 59 DEGREE) N - NARROW SPOT (20 DEGREE - 35 DEGREE) S - SPOT (10 DEGREE - 19 DEGREE) W - WIDE FLOOD (60 DEGREE - 120 DEGREE) V - VERY NARROW SPOT (2 DEGREE - 9 DEGREE) A - D - MISC DIFFERENCES</div>		<div><div></div><div></div></div>	SURFACE MOUNTED 2 X 4, 2 X 2
		<div><div></div><div></div></div>	PENDANT MOUNTED LINEARS
		<div><div></div><div></div></div>	STEPLIGHT
		<div><div></div><div></div><div></div></div>	INGRADE UPLIGHT
		<div><div></div></div>	FLOODLIGHT
		<div><div></div><div></div></div>	BOLLARD
		<div><div></div><div></div></div>	POLE LIGHT
		<div><div></div></div>	MULTI-HEAD RECESSED TROUGH FIXTURE
		<div><div></div></div>	LED STRIPLIGHT
		<div><div></div></div>	LOW-VOLTAGE STRIPLIGHT
		<div><div></div></div>	LINEAR LED SYSTEM

LIGHTING SHEET INDEX		
2024-10-04 DP		
	Sheet Number	Sheet Name

X	LI.000	LIGHTING SHEET INDEX
X	LI.100	SITE LIGHTING PHOTOMETRIC
X	LI.101	POOL LIGHTING PHOTOMETRIC
X	LI.200	BUILDING ELEVATIONS - NORTH
X	LI.201	BUILDING ELEVATIONS - EAST
X	LI.202	BUILDING ELEVATIONS - SOUTH
X	LI.203	BUILDING ELEVATIONS - WEST
X	LI.300	BUILDING LIGHTING - CUTSHEETS - 1
X	LI.301	BUILDING LIGHTING - CUTSHEETS - 2
X	LI.302	BUILDING LIGHTING - CUTSHEETS - 3



NOT FOR  
CONSTRUCTION

1965 SKI TIME SQUARE DRIVE  
STEAMBOAT SPRINGS, CO 80487

REVISIONS:		
NO	DATE	DESCRIPTION

PROJECT NUMBER:  
123134.00

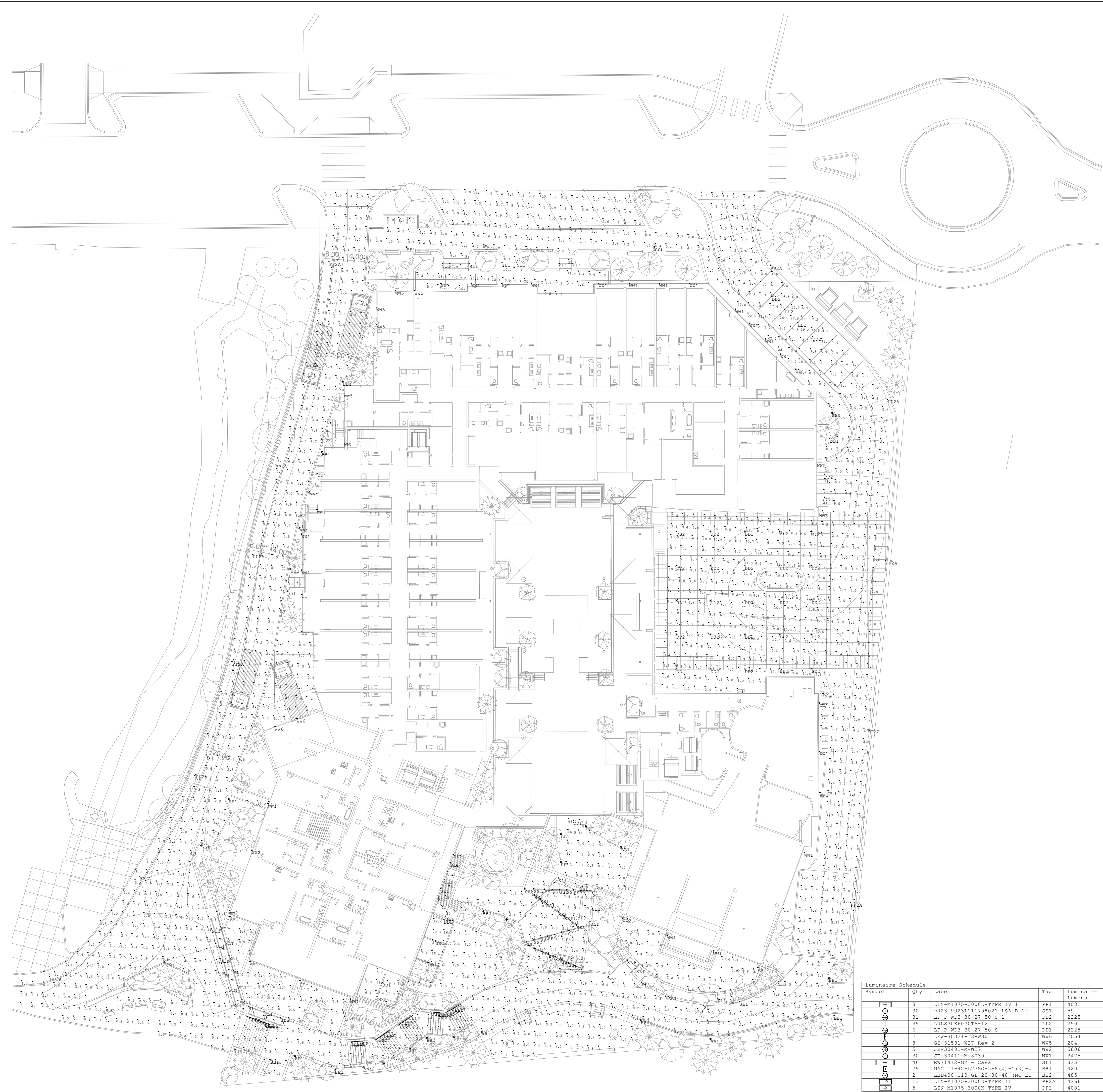
DATE:  
10/04/2024

ISSUED FOR:  
DP - REV2

SHEET TITLE:  
LIGHTING SHEET INDEX

SHEET NUMBER  
LI.000

10/3/2024 3:16:27 PM Autodesk Docs\\TRC\_THB\\123134\_1965 STS\_THUNDERHEAD\_L173 REV2.rvt



NOT FOR  
CONSTRUCTION

# 1965 SKI TIME SQUARE DRIVE

## STEAMBOAT SPRINGS, CO 80487

REVISIONS:		
NO	DATE	DESCRIPTION

PROJECT NUMBER:  
123134.00

DATE:  
10/04/2024

ISSUED FOR:  
DP - REV2

SHEET TITLE:  
SITE LIGHTING  
PHOTOMETRIC

SHEET NUMBER

L1.100





NOT FOR  
CONSTRUCTION

1965 SKI TIME SQUARE DRIVE  
STEAMBOAT SPRINGS, CO 80487

REVISIONS:		
NO	DATE	DESCRIPTION

PROJECT NUMBER:  
123134.00

DATE:  
10/04/2024

ISSUED FOR:  
DP - REV2

SHEET TITLE:  
POOL LIGHTING  
PHOTOMETRIC

SHEET NUMBER

LI.101







NOT FOR  
CONSTRUCTION

1965 SKI TIME SQUARE DRIVE  
STEAMBOAT SPRINGS, CO 80487

REVISIONS:		
NO	DATE	DESCRIPTION

PROJECT NUMBER:  
123134.00  
DATE:  
10/04/2024  
ISSUED FOR:  
DP - REV2  
SHEET TITLE:  
BUILDING ELEVATIONS -  
NORTH

SHEET NUMBER  
LI.200

BUILDING ELEVATION NOTES

- CONTROL JOINTS AND PANEL JOINTS TO ALIGN WITH OPENINGS AND PANEL JOINTS U.N.O.
- INTAKE / EXHAUST VENTS TO BE ALIGNED WITH WINDOW OPENINGS AND PANEL JOINTS U.N.O. MAINTAIN 3'-0" MIN FROM OPERABLE OPENINGS.
- REFER TO WALL SECTIONS AND PLANS FOR WALL TYPES.
- REFER TO CIVIL PLANS FOR FINISHED GRADE ELEVATIONS.
- COORDINATE LOCATION OF FDC AND KNOX BOX WITH FIRE DEPARTMENT AND ARCHITECT PRIOR TO INSTALL.
- COORDINATE LOCATION OF EXTERIOR LIGHT FIXTURES WITH ARCHITECT.
- REFER TO SHEET ~~XXXX~~ FOR MATERIAL TRANSITIONS
- PAIN ALL EXPOSED MATERIALS NOT FACTORY FINISHED TO MATCH SURROUNDING WALL FINISH MATERIALS.

EXTERIOR MATERIALS LEGEND

WD-01

WOOD-LOOK  
SIDING

MFR: TRUE EXTERIOR  
PRODUCT: REVERSIBLE SHIPLAP NICKEL GAP  
NAME / COLOR: CUSTOM FINISH

WD-02

NATURAL BARN WOOD SIDING

MFR: RANCHWOOD  
PRODUCT: ARTISAN SERIES (CEDAR) 1X6 LAP SIDING  
NAME / COLOR: CUSTOM COLOR

MAS-01

NATURAL STONE MASONRY

MFR: GALLEGOS  
PRODUCT: NATURAL HIGHLANDS - LIMESTONE  
NAME / COLOR: SEE ABOVE

S-01

STUCCO

MFR: TBD  
PRODUCT: TUSCAN 3-PART SMOOTH FINISH W/ CONTROL JOINTS  
NAME / COLOR: SAND GRAY TO MATCH ARCHITECT'S SAMPLE

S-02

STUCCO

MFR: TBD  
PRODUCT: TUSCAN 3-PART SMOOTH FINISH W/ CONTROL JOINTS  
NAME / COLOR: BROWN TO MATCH ARCHITECT'S SAMPLE

MP-01

METAL PANEL  
SIDING

MFR: PAC-CLAD - PETERSEN  
PRODUCT: FLAT TILE - PRECISION SERIES TILE  
NAME / COLOR: DARK BRONZE

MP-02

STANDING SEAM METAL ROOF/SIDING

MFR: MORIN CORP OR SIMILAR  
PRODUCT: SLR-12-2  
NAME / COLOR: DARK BRONZE TO MATCH ARCHITECT'S SAMPLE

MP-03

CORTEN METAL PANEL SIDING

MFR: MORIN CORP OR SIMILAR  
PRODUCT: 18" PANEL  
NAME / COLOR: 22 GAUGE

TYPICAL  
WINDOWS

MFR: SIERRA PACIFIC  
PRODUCT: ASPEN 2.0 & DIRECT GLAZE  
NAME / COLOR: DARK BRONZE - LOW E-366 W/ DOUBLE PANE GLASS

STOREFRONT

MFR: EFCO  
PRODUCT: 403X & 590X WITH APPLIED COMPRESSION PROFILES  
NAME / COLOR: ANODIZED DARK BRONZE

WOOD TRIM & CLADDING ON EXPOSED  
STRUCTURE

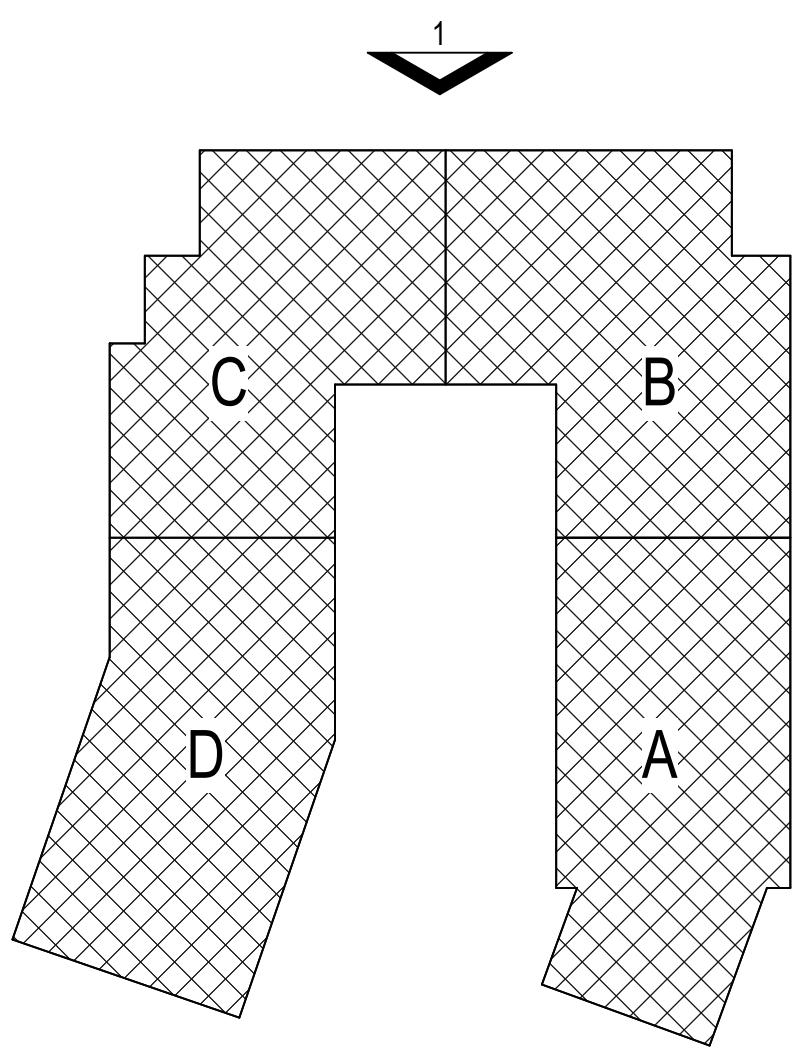
MFR: TBD  
PRODUCT: SEALED NATURAL WOOD & CLADDING WRAPPED  
STRUCTURE WHERE SPECIFIED  
NAME / COLOR: CUSTOM STAIN

METAL TRIM, RAILINGS, & EXPOSED  
STRUCTURE

MFR: CUSTOM STEEL FABRICATION  
PRODUCT: 2" X 1/4" SQUARE-STOCK WELDED PICKETS  
OR GLASS PANEL WITH PREFINISHED ALUMINUM METAL FRAME.  
SEE ELEVATIONS FOR LOCATIONS OF EACH  
NAME / COLOR: DARK BRONZE

PROJECT FLAGNOTES

KEY PLAN



1 NORTH OVERALL BUILDING ELEVATION LIGHTING - Dependent 1  
3/32" = 1'-0"





NOT FOR  
CONSTRUCTION

1965 SKI TIME SQUARE DRIVE  
STEAMBOAT SPRINGS, CO 80487

REVISIONS:		
NO	DATE	DESCRIPTION

PROJECT NUMBER:  
123134.00  
DATE:  
10/04/2024  
ISSUED FOR:  
DP - REV2  
SHEET TITLE:  
BUILDING ELEVATIONS -  
EAST

SHEET NUMBER  
LI.201

BUILDING ELEVATION NOTES

- CONTROL JOINTS AND PANEL JOINTS TO ALIGN WITH OPENINGS AND PANEL JOINTS U.N.O.
- INTAKE / EXHAUST VENTS TO BE ALIGNED WITH WINDOW OPENINGS AND PANEL JOINTS U.N.O. MAINTAIN 3'-0" MIN FROM OPERABLE OPENINGS.
- REFER TO WALL SECTIONS AND PLANS FOR WALL TYPES.
- REFER TO CIVIL PLANS FOR FINISHED GRADE ELEVATIONS.
- COORDINATE LOCATION OF FDC AND KNOX BOX WITH FIRE DEPARTMENT AND ARCHITECT PRIOR TO INSTALL.
- COORDINATE LOCATION OF EXTERIOR LIGHT FIXTURES WITH ARCHITECT.
- REFER TO SHEET ~~XXXX~~ FOR MATERIAL TRANSITIONS.
- PANT ALL EXPOSED MATERIALS NOT FACTORY FINISHED TO MATCH SURROUNDING WALL FINISH MATERIALS.

PROJECT FLAGNOTES

EXTERIOR MATERIALS LEGEND

**WD-01**  
WOOD-LOOK  
SIDING  
MFR: TRUE EXTERIOR  
PRODUCT: REVERSIBLE SHIPLAP NICKEL GAP  
NAME / COLOR: CUSTOM FINISH

**WD-02**  
NATURAL BARN WOOD SIDING  
MFR: RANCHWOOD  
PRODUCT: ARTISAN SERIES (CEDAR) 1X6 LAP SIDING  
NAME / COLOR: CUSTOM COLOR

**MAS-01**  
NATURAL STONE MASONRY  
MFR: GALLEGO  
PRODUCT: NATURAL HIGHLANDS - LIMESTONE  
NAME / COLOR: SEE ABOVE

**S-01**  
STUCCO  
MFR: TBD  
PRODUCT: TUSCAN 3-PART SMOOTH FINISH W/ CONTROL JOINTS  
NAME / COLOR: SAND GRAY TO MATCH ARCHITECT'S SAMPLE

**S-02**  
STUCCO  
MFR: TBD  
PRODUCT: TUSCAN 3-PART SMOOTH FINISH W/ CONTROL JOINTS  
NAME / COLOR: BROWN TO MATCH ARCHITECT'S SAMPLE

**MP-01**  
METAL PANEL  
SIDING  
MFR: PAC-CLAD - PETERSEN  
PRODUCT: FLAT TILE - PRECISION SERIES TILE  
NAME / COLOR: DARK BRONZE

**MP-02**  
STANDING SEAM METAL ROOF/SIDING  
MFR: MORIN CORP OR SIMILAR  
PRODUCT: SLR-122  
NAME / COLOR: DARK BRONZE TO MATCH ARCHITECT'S SAMPLE

**MP-03**  
CORTEN METAL PANEL SIDING  
MFR: MORIN CORP OR SIMILAR  
PRODUCT: 18" PANEL  
NAME / COLOR: 22 GAUGE

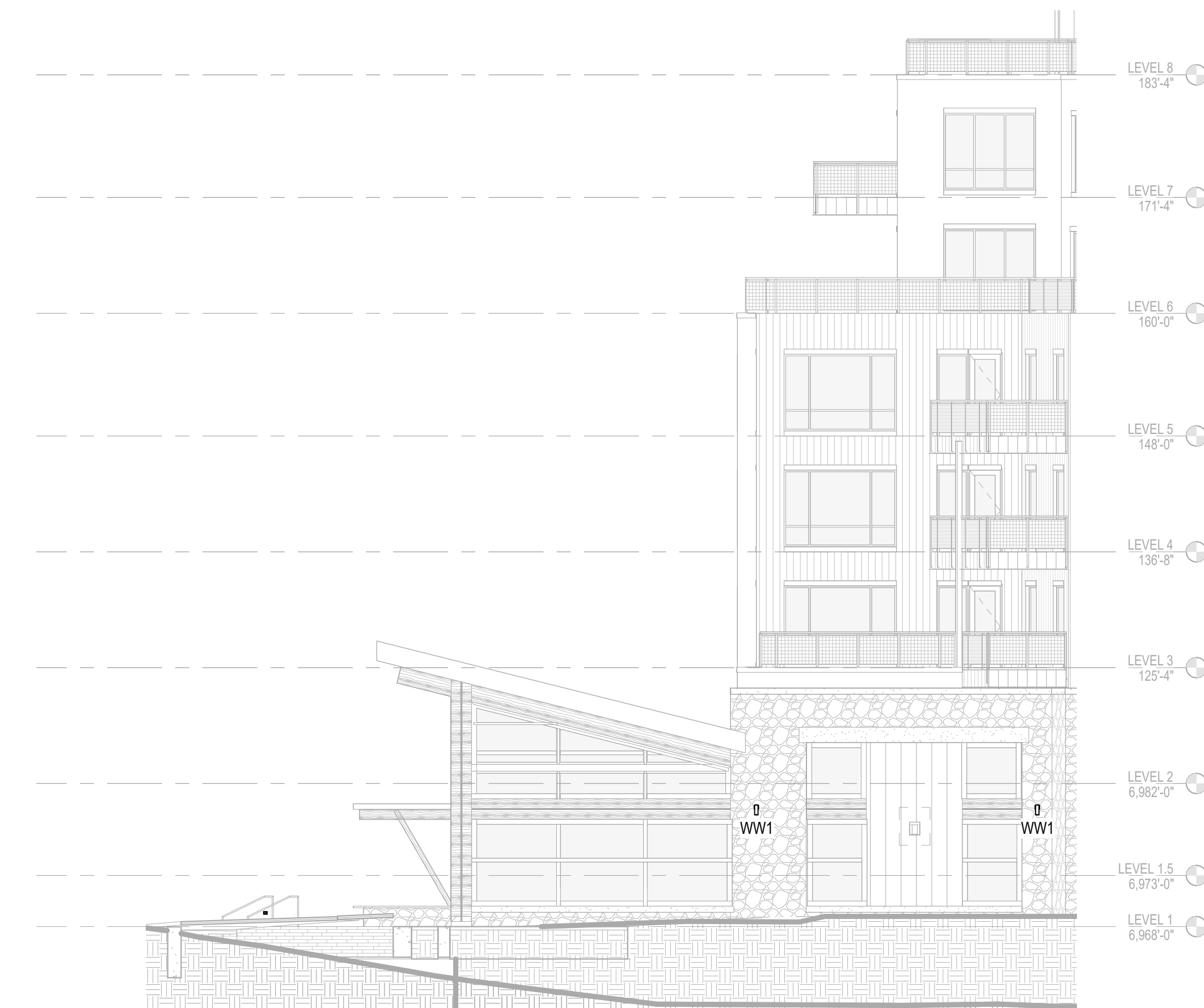
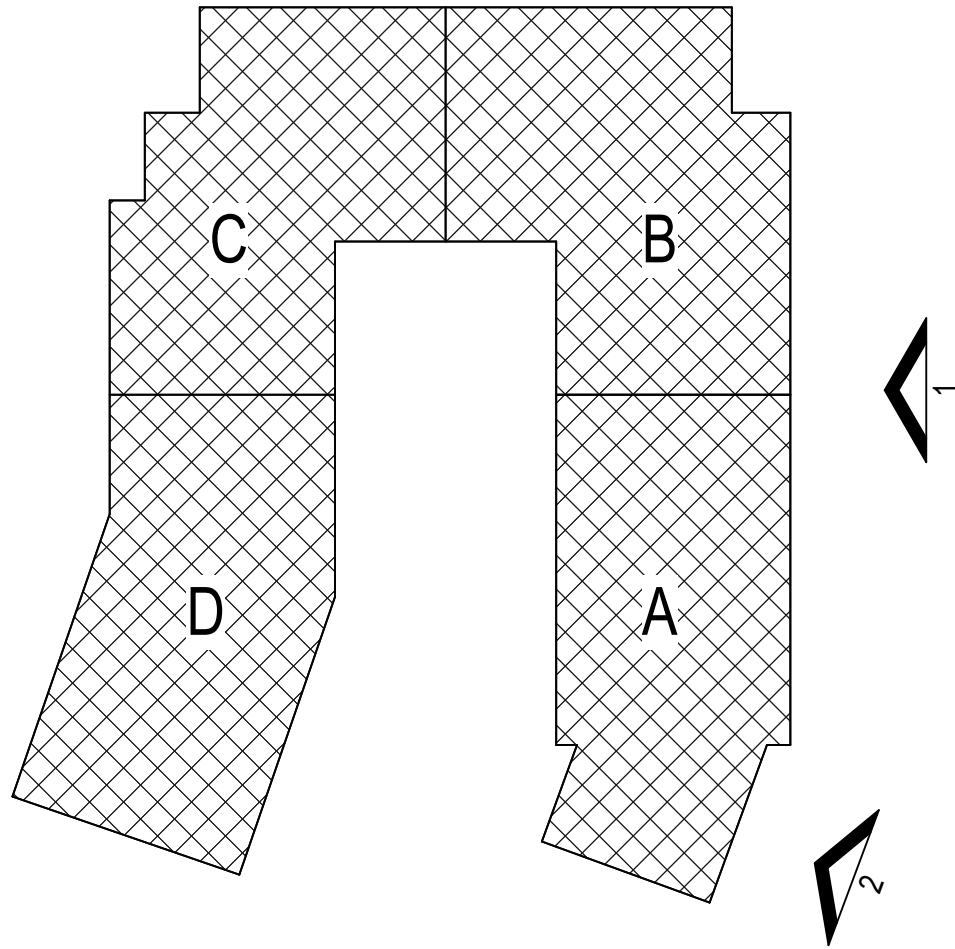
**TYPICAL WINDOWS**  
MFR: SIERRA PACIFIC  
PRODUCT: ASPEN 2.0 & DIRECT GLAZE  
NAME / COLOR: DARK BRONZE - LOW E-366 W/ DOUBLE PANIE GLASS

**STOREFRONT**  
MFR: EFCO  
PRODUCT: 403X & 590X WITH APPLIED COMPRESSION PROFILES  
NAME / COLOR: ANODIZED DARK BRONZE

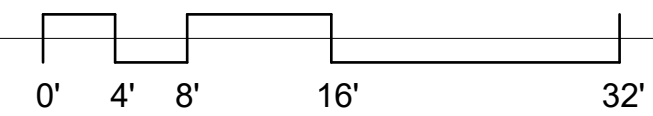
**WOOD TRIM & CLADDING ON EXPOSED STRUCTURE**  
MFR: TBD  
PRODUCT: SEALED NATURAL WOOD & CLADDING WRAPPED STRUCTURE WHERE SPECIFIED  
NAME / COLOR: CUSTOM STAIN

**METAL TRIM, RAILINGS, & EXPOSED STRUCTURE**  
MFR: CUSTOM STEEL FABRICATION  
PRODUCT: 2" X 1/4" SQUARE STOCK WELDED PICKETS OR GLASS PANEL WITH PREFINISHED ALUMINUM METAL FRAME. SEE ELEVATIONS FOR LOCATIONS OF EACH  
NAME / COLOR: DARK BRONZE

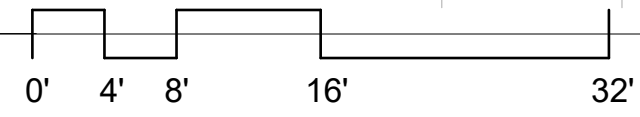
KEY PLAN



2 | EAST ELEVATION AT SE BEND LIGHTING - Dependent 1  
3/32" = 1'-0"

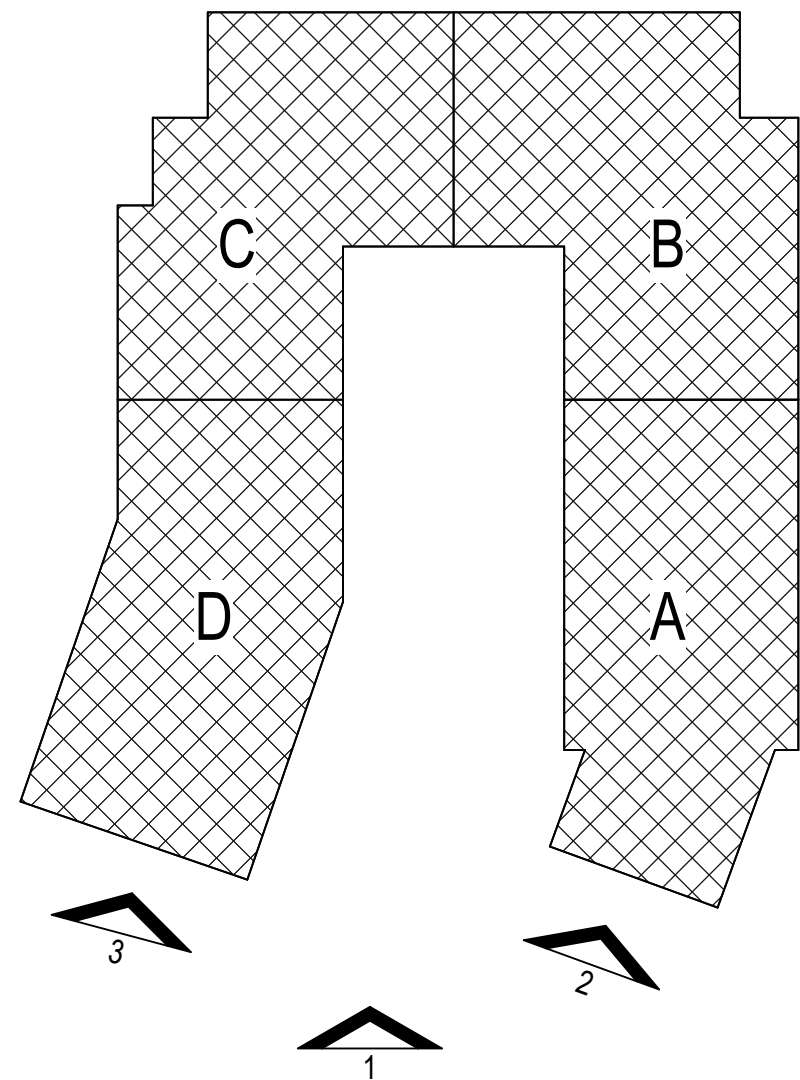


1 | EAST OVERALL BUILDING ELEVATION LIGHTING - Dependent 1  
3/32" = 1'-0"





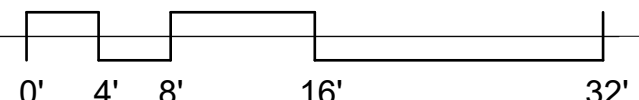
KEY PLAN



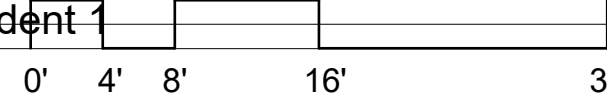
AA BB CC DD EE



3 | SOUTH ELEVATION @ SW BEND LIGHTING - Dependent 1  
3/32" = 1'-0"



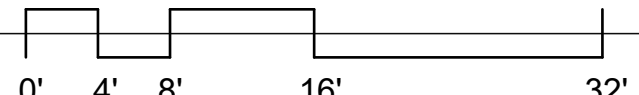
2 | SOUTH ELEVATION @ SE BEND LIGHTING - Dependent 1  
3/32" = 1'-0"



A B C D E F G H J K



1 | SOUTH OVERALL BUILDING ELEVATION LIGHTING - Dependent 1  
3/32" = 1'-0"



EXTERIOR MATERIALS LEGEND

**WD-01**  
WOOD-LOOK SIDING  
MFR. TRUE EXTERIOR  
PRODUCT: REVERSLAP SHIP LAP NICKEL GAP  
NAME / COLOR: CUSTOM FINISH

**WD-02**  
NATURAL BARN WOOD SIDING  
MFR. RANCHWOOD  
PRODUCT: ARTISAN SERIES (CEDAR) 1X6 LAP SIDING  
NAME / COLOR: CUSTOM COLOR

**MAS-01**  
NATURAL STONE MASONRY  
MFR. GALLESOS  
PRODUCT: NATURAL HIGHLANDS - LIMESTONE  
NAME / COLOR: SEE ABOVE

**S-01**  
STUCCO  
MFR. TBD  
PRODUCT: TUSCAN 3-PART SMOOTH FINISH W/ CONTROL JOINTS  
NAME / COLOR: SAND GRAY TO MATCH ARCHITECT'S SAMPLE

**S-02**  
STUCCO  
MFR. TBD  
PRODUCT: TUSCAN 3-PART SMOOTH FINISH W/ CONTROL JOINTS  
NAME / COLOR: BROWN TO MATCH ARCHITECT'S SAMPLE

**MP-01**  
METAL PANEL SIDING  
MFR. PAC-CLAD - PETERSEN  
PRODUCT: FLAT TILE - PRECISION SERIES TILE  
NAME / COLOR: DARK BRONZE

**MP-02**  
STANDING SEAM METAL ROOF/SIDING  
MFR. MORIN CORP OR SIMILAR  
PRODUCT: SLR-12-2  
NAME / COLOR: DARK BRONZE TO MATCH ARCHITECT'S SAMPLE

**MP-03**  
CORTEN METAL PANEL SIDING  
MFR. MORIN CORP OR SIMILAR  
PRODUCT: 18" PANEL  
NAME / COLOR: 22 GAUGE

**TYPICAL WINDOWS**  
MFR. SIERRA PACIFIC  
PRODUCT: ASPEN 2.0 & DIRECT GLAZE  
NAME / COLOR: DARK BRONZE - LOW E-366 W/ DOUBLE PANE GLASS

**STOREFRONT**  
MFR. EFCO  
PRODUCT: 403X & 590X WITH APPLIED COMPRESSION PROFILES  
NAME / COLOR: ANODIZED DARK BRONZE

**WOOD TRIM & CLADDING ON EXPOSED STRUCTURE**  
MFR. TBD  
PRODUCT: SEALED NATURAL WOOD & CLADDING WRAPPED STRUCTURE WHERE SPECIFIED  
NAME / COLOR: CUSTOM STAIN

**METAL TRIM, RAILINGS, & EXPOSED STRUCTURE**  
MFR. CUSTOM STEEL FABRICATION  
PRODUCT: 2" X 14" SQUARE-STOCK WELDED PICKETS OR GLASS PANEL WITH PREFINISHED ALUMINUM METAL FRAME. SEE ELEVATIONS FOR LOCATIONS OF EACH  
NAME / COLOR: DARK BRONZE

BUILDING ELEVATION NOTES

- CONTROL JOINTS AND PANEL JOINTS TO ALIGN WITH OPENINGS AND PANEL JOINTS U.N.O.
- INTAKE/ EXHAUST VENTS TO BE ALIGNED WITH WINDOW OPENINGS AND PANEL JOINTS U.N.O. MAINTAIN 3'-0" MIN FROM OPERABLE OPENINGS
- REFER TO WALL SECTIONS AND PLANS FOR WALL TYPES
- REFER TO CIVIL PLANS FOR FINISHED GRADE ELEVATIONS
- COORDINATE LOCATION OF FDC AND KNOX BOX WITH FIRE DEPARTMENT AND ARCHITECT PRIOR TO INSTALL
- COORDINATE LOCATION OF EXTERIOR LIGHT FIXTURES WITH ARCHITECT
- REFER TO SHEET 20000 FOR MATERIAL TRANSITIONS
- PANT ALL EXPOSED MATERIALS NOT FACTORY FINISHED TO MATCH SURROUNDING WALL FINISH MATERIALS

PROJECT FLAGNOTES



NOT FOR CONSTRUCTION

1965 SKI TIME SQUARE DRIVE  
STEAMBOAT SPRINGS, CO 80487

REVISIONS:  
NO DATE DESCRIPTION

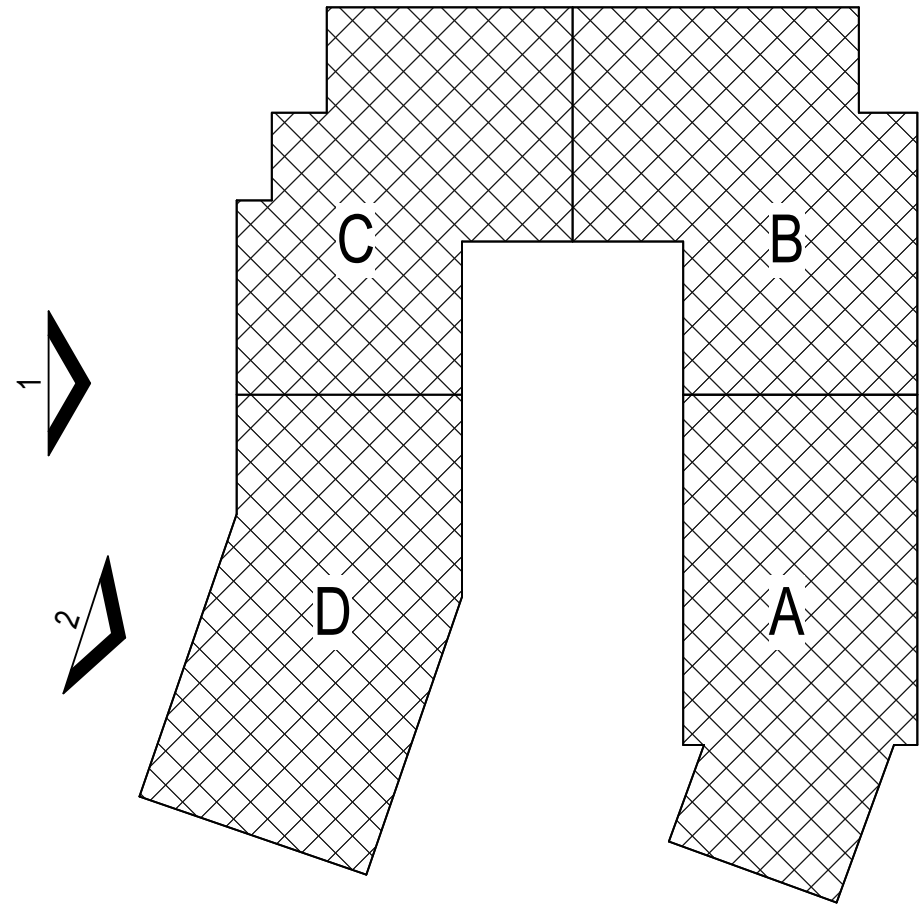
PROJECT NUMBER:  
123134.00  
DATE:  
10/04/2024  
ISSUED FOR:  
DP - REV2  
SHEET TITLE:  
BUILDING ELEVATIONS - SOUTH

SHEET NUMBER

LI.202



KEY PLAN



2 | WEST ELEVATION @ SW BEND LIGHTING - Dependent 1  
3/32" = 1'-0"

BUILDING ELEVATION NOTES

1. CONTROL JOINTS AND PANEL JOINTS TO ALIGN WITH OPENINGS AND PANEL JOINTS U.N.O.
2. INTAKE / EXHAUST VENTS TO BE ALIGNED WITH WINDOW OPENINGS AND PANEL JOINTS U.N.O. MAINTAIN 3'-0" MIN FROM OPERABLE OPENINGS.
3. REFER TO WALL SECTIONS AND PLANS FOR WALL TYPES.
4. REFER TO CIVIL PLANS FOR FINISHED GRADE ELEVATIONS.
5. COORDINATE LOCATION OF FDC AND KNOX BOX WITH FIRE DEPARTMENT AND ARCHITECT PRIOR TO INSTALL.
6. COORDINATE LOCATION OF EXTERIOR LIGHT FIXTURES WITH ARCHITECT.
7. REFER TO SHEET 100000 FOR MATERIAL TRANSITIONS
8. PAINT ALL EXPOSED MATERIALS NOT FACTORY FINISHED TO MATCH SURROUNDING WALL FINISH MATERIALS.

PROJECT FLAGNOTES

EXTERIOR MATERIALS LEGEND

- WD-01**  
**WOOD-LOOK SIDING**  
MFR. TRUE EXTERIOR  
PRODUCT: REVERSIBLE SHIP LAP NICKEL GAP  
NAME / COLOR: CUSTOM FINISH
- WD-02**  
**NATURAL BARN WOOD SIDING**  
MFR. RANCHWOOD  
PRODUCT: ARTISAN SERIES (CEDAR) 1X6 LAP SIDING  
NAME / COLOR: CUSTOM COLOR

- MAS-01**  
**NATURAL STONE MASONRY**  
MFR. GALLESOS  
PRODUCT: NATURAL HIGHLANDS - LIMESTONE  
NAME / COLOR: SEE ABOVE

- S-01**  
**STUCCO**  
MFR. TBD  
PRODUCT: TUSCAN 3-PART SMOOTH FINISH W/ CONTROL JOINTS  
NAME / COLOR: SAND GRAY TO MATCH ARCHITECT'S SAMPLE

- S-02**  
**STUCCO**  
MFR. TBD  
PRODUCT: TUSCAN 3-PART SMOOTH FINISH W/ CONTROL JOINTS  
NAME / COLOR: BROWN TO MATCH ARCHITECT'S SAMPLE

- MP-01**  
**METAL PANEL SIDING**  
MFR. PAC-CLAD - PETERSEN  
PRODUCT: FLAT TILE - PRECISION SERIES TILE  
NAME / COLOR: DARK BRONZE

- MP-02**  
**STANDING SEAM METAL ROOF/SIDING**  
MFR. MORIN CORP OR SIMILAR  
PRODUCT: SLR-12-2  
NAME / COLOR: DARK BRONZE TO MATCH ARCHITECT'S SAMPLE

- MP-03**  
**CORTEN METAL PANEL SIDING**  
MFR. MORIN CORP OR SIMILAR  
PRODUCT: 18" PANEL  
NAME / COLOR: 22 GAUGE

- TYPICAL WINDOWS**  
MFR. SIERRA PACIFIC  
PRODUCT: ASPEN 2.0 & DIRECT GLAZE  
NAME / COLOR: DARK BRONZE - LOW E-366 W/ DOUBLE PANE GLASS

- STOREFRONT**  
MFR. ERCO  
PRODUCT: 403X & 590X WITH APPLIED COMPRESSION PROFILES  
NAME / COLOR: ANODIZED DARK BRONZE

- WOOD TRIM & CLADDING ON EXPOSED STRUCTURE**  
MFR. TBD  
PRODUCT: SEALED NATURAL WOOD & CLADDING WRAPPED STRUCTURE WHERE SPECIFIED  
NAME / COLOR: CUSTOM STAIN

- METAL TRIM, RAILINGS, & EXPOSED STRUCTURE**  
MFR. CUSTOM STEEL FABRICATION  
PRODUCT: 2" X 1/4" SQUARE-STOCK WELDED PICKETS OR GLASS PANEL WITH PREFINISHED ALUMINUM METAL FRAME. SEE ELEVATIONS FOR LOCATIONS OF EACH  
NAME / COLOR: DARK BRONZE



1 | WEST OVERALL BUILDING ELEVATION LIGHTING - Dependent 1  
3/32" = 1'-0"



NOT FOR CONSTRUCTION

1965 SKI TIME SQUARE DRIVE  
STEAMBOAT SPRINGS, CO 80487

REVISIONS:		
NO	DATE	DESCRIPTION

PROJECT NUMBER:  
123134.00

DATE:  
10/04/2024

ISSUED FOR:  
DP - REV2


SHEET TITLE:  
BUILDING ELEVATIONS - WEST

SHEET NUMBER


LI.203



SL1




12V | Litesphere™ ADAPT 2.0



Project: \_\_\_\_\_ Type: \_\_\_\_\_

- The next evolution of ADAPT delivers a robust specification-grade strand with factory molded standard spacing for consistent quality from start to finish
- Litesphere ADAPT 2.0 design provides optional suspended mounting or a twist-off cap for surface applications
- 12V DC Low voltage system for long runs
- Socket and cord color available in black or white
- Proprietary ADAPT screw base fitting
- Silicone-coated ADAPT glassware for assisting with shatter resistance
- IP67
- cULus
- 3 Year warranty

Dimensions



7.1"

5"

6.7"

2.375"

1

2

3

4

5

6

7

8

9

10

11

12

13

14

15

16

17

18

19

20

21

22

23

24

25

26

27

28

29

30

31

32

33

34

35

36

37

38

39

40

41

42

43

44

45

46

47

48

49

50

51

52

53

54

55

56

57

58

59

60

61

62

63

64

65

66

67

68

69

70

71

72

73

74

75

76

77

78

79

80

81

82

83

84

85

86

87

88

89

90

91

92

93

94

95

96

97

98

99

100

1

2

3

4

5

6

7

8

9

10

11

12

13

14

15

16

17

18

19

20

21

22

23

24

25

26

27

28

29

30

31

32

33

34

35

36

37

38

39

40

41

42

43

44

45

46

47

48

49

50

51

52

53

54

55

56

57

58

59

60

61

62

63

64

65

66

67

68

69

70

71

72

73

74

75

76

77

78

79

80

81

82

83

84

85

86

87

88

89

90

91

92

93

94

95

96

97

98

99

100

1

2

3

4

5

6

7

8

9

10

11

12

13

14

15

16

17

18

19

20

21

22

23

24

25

26

27

28

29

30

31

32

33

34

35

36

37

38

39

40

41

42

43

44

45

46

47

48

49

50

51

52

53

54

55

56

57

58

59

60

61

62

63

64

65

66

67

68

69

70

71

72

73

74

75

76

77

78

79

80

81

82

83

84

85

86

87

88

89

90

91

92

93

94

95

96

97

98

99

100

1

2

3

4

5

6

7

8

9

10

11

12

13

14

15

16

17

18

19

20

21

22

23

24

25

26

27

28

29

30

31

32

33

34

35

36

37

38

39

40

41

42

43

44

45

46

47

48

49

50

51

52

53

54

55

56

57

58

59

60

61

62

63

64

65

66

67

68

69

70

71

72

73

74

75

76

77

78

79

80

81

82

83

84

85

86

87

88

89

90

91

92

93

94

95

96

97

98

99

100

1

2

3

4

5

6

7

8

9

10

11

12

13

14

15

16

17

18

19

20

21

22

23

24

25

26

27

28

29

30

31

32

33

34

35

36

37

38

39

40

41

42

43

44

45

46

47

48

49

50

51

52

53

54

55

56

57

58

59

60

61

62

63

64

65

66

67

68

69

70

71

72

73

74

75

76

77

78

79

80

81

82

83

84

85

86

87

88

89

90

91

92

93

94

95

96

97

98

99

100

1

2

3

4

5

6

7

8

9

10

11

12

13

14

15

16

17

18

19

20

21

22

23

24

25

26

27

28

29

30

31

32

33

34

35

36

37

38

39

40

41

42

43

44

45

46

47

48

49

50

51

52

53

54

55

56

57

58

59

60

61

62

63

64

65

66

67

68

69

70

71

72

73

74

75

76

77

78

79

80

81

82

83

84

85

86

87

88

89

90

91

92

93

94

95

96

97

98

99

100

1

2

3

4

5

6

7

8

9

10

11

12

13

14

15

16

17

18

19

20

21

22

23

24

25

26

27

28

29

30

31

32

33

34

35

36

37

38

39

40

41

42

43

44

45

46

47

48

49

50

51

52

53

54

55

56

57

58

59

60

61

62

63

64

65

66

67

68

69

70

71

72

73

74

75

76

77

78

79

80

81

82

83

84

85

86

87

88

89

90

91

92

93

94

95

96

97

98

99

100

1

2

3

4

5

6

7

8

9

10

11

12

13

14

15

16

17

18

19

20

21

22

23

24

25

26

27

28

29

30

31

32

33

34

35

36

37

38

39

40

41

42

43

44

45

46

47

48

49

50

51

52

53

54

55

56

57

58

59

60

61

62

63

64

65

66

67

68

69

70

71

72

73

74

75

76

77

78

79

80

81

82

83

84

85

86

87

88

89

90

91

92

93

94

95

96

97

98

99

100

1

2

3

4

5

6

7

8

9

10

11

12

13

14

15

16

17

18

19

20

21

22

23

24

25

26

27

28

29

30

31

32

33

34

35

36

37

38

39

40

41

42

43

44

45

46

47

48

49

50

51

52

53

54

55

56

57

58

59

60

61

62

63

64

65

66

67

68

69

70

71

72

73

74

75

76

77

78

79

80

81

82

83

84

85

86

87

88

89

90

91

92

93

94

95

96

97

98

99

100

1

2

3

4

5

6

7

8

9

10

11

12

13

14

15

16

17

18

19

20

21

22

23

24

25

26

27

28

29

30

31

32

33

34

35

36

37

38

39

40

41

42

43

44

45

46

47

48

49

50

51

52

53

54

55

56

57

58

59

60

61

62

63

64

65

66

67

68

69

70

71

72

73

74

75

76

77

78

79

80

81

82

83

84

85

86

87

88

89

90

91

92

93

94

95

96

97

98

99

100

1

2

3

4

5

6

7

8

9

10

11

12

13

14

15

16

17

18

19

20

21

22

23

24

25

26

27

28

29

30

31

32

33

34

35

36

37

38

39

40

41

42

43

44

45

46

47

48

49

50

51

52

53

54

55

56

57

58

59

60

61

62

63

64

65

66

67

68

69

70

71

72

73

74

75

76

77

78

79

80

81

82

83

84

85

86

87

88

89

90

91

92

93

94

95

96

97

98

99

100

1

2

3

4

5

6

7

8

9

10

11

12

13

14

15

16

17

18

19

20

21

22

23

24

25

26

27

28

29

30

31

32

33

34

35

36

37

38

39

40

41

42

43

44

45

46

47

48

49

50

51

52

53

54

55

56

57

58

59

60

61

62

63

64

65

66

67

68

69

70

71

72

73

74

75

76

77

78

79

80

81

82

83

84

85

86

87

88

89

90

91

92

93

94

95

96

97

98

99

100

1

2

3

4

5

6

7

8

9

10

11

12

13

14

15

16

17

18

19

20

21

22

23

24

25

26

27

28

29

30

31

32

33

34

35

36

37

38

39

40

41

42

43

44

45

46

47

48

49

50

51

52

53

54

55

56

57

58

59

60

61

62

63

64

65

66

67

68

69

70

71

72

73

74

75

76

77

78

79

80

81

82

83

84

85

86

87

88

89

90

91

92

93

94

95

96

97

98

99

100

1

2

3

4

5

6

7

8

9

10

11

12

13

14

15

16

17

18

19

20

21

22

23

24

25

26

27

28

29

30

31

32

33

34

35

36

37

38

39

40

41

42

43

44

45

46

47

48

49

50

51

52

53

54

55

56

57

58

59

60

61

62

63

64

65

66

67

68

69

70

71

72

73

74

75

76

77

78

79

80

81

82

83

84

85

86

87

88

89

90

91

92

93

94

95

96

97

98

99

100

1

2

3

4

5

6

7

8

9

10

11

12

13

14

15

16

17

18

19

20

21

22

23

24

25

26

27

28

29

30

31

32

33

34

35

36

37

38

39

40

41

42

43

44

45

46

47

48

49

50

51

52

53

54

55

56

57

58

59

60

61

62

63

64

65

66

67

68

69

70

71

72

73

74

75

76

77

78

79

80

81

82

83

84

85

86

87

88

89

90

91

92

93

94

95

96

97

98

99

100

1

2

3

4

5

6

7

8

9

10

11

12

13

14

15

16

17

18

19

20

21

22

23

24

25

26

27

28

29

30

31

32

33

34

35

36

37

38

39

40

41

42

43

44

45

46

47

48

49

50

51

52

53

54

55

56

57

58

59

60

61

62

63

64

65

66

67

68

69

70

71

72

73

74

75

76

77

78

79

80

81

82

83

84

85

86

87

88

89

90

91

92

93

94

95

96

97

98

99

100

1

2

3

4

5

6

7

8

9

10

11

12

13

14

15

16

17

18

19

20

21

22

23

24

25

26

27

28

29

30

31

32

33

34

35

36

37

38

39

40

41

42

43

44

45

46

47

48

49

50

51

52

53

54

55

56

57

58

59

60

61

62

63

64

65

66

67

68

69

70

71

72

73

74

75

76

77

78

79

80

81

82

83

84

85

86

87

88

89

90

91

92

93

94

95

96

97

98

99

100

1

2

3

4

5

6

7

8

9

10

11

12

13

14



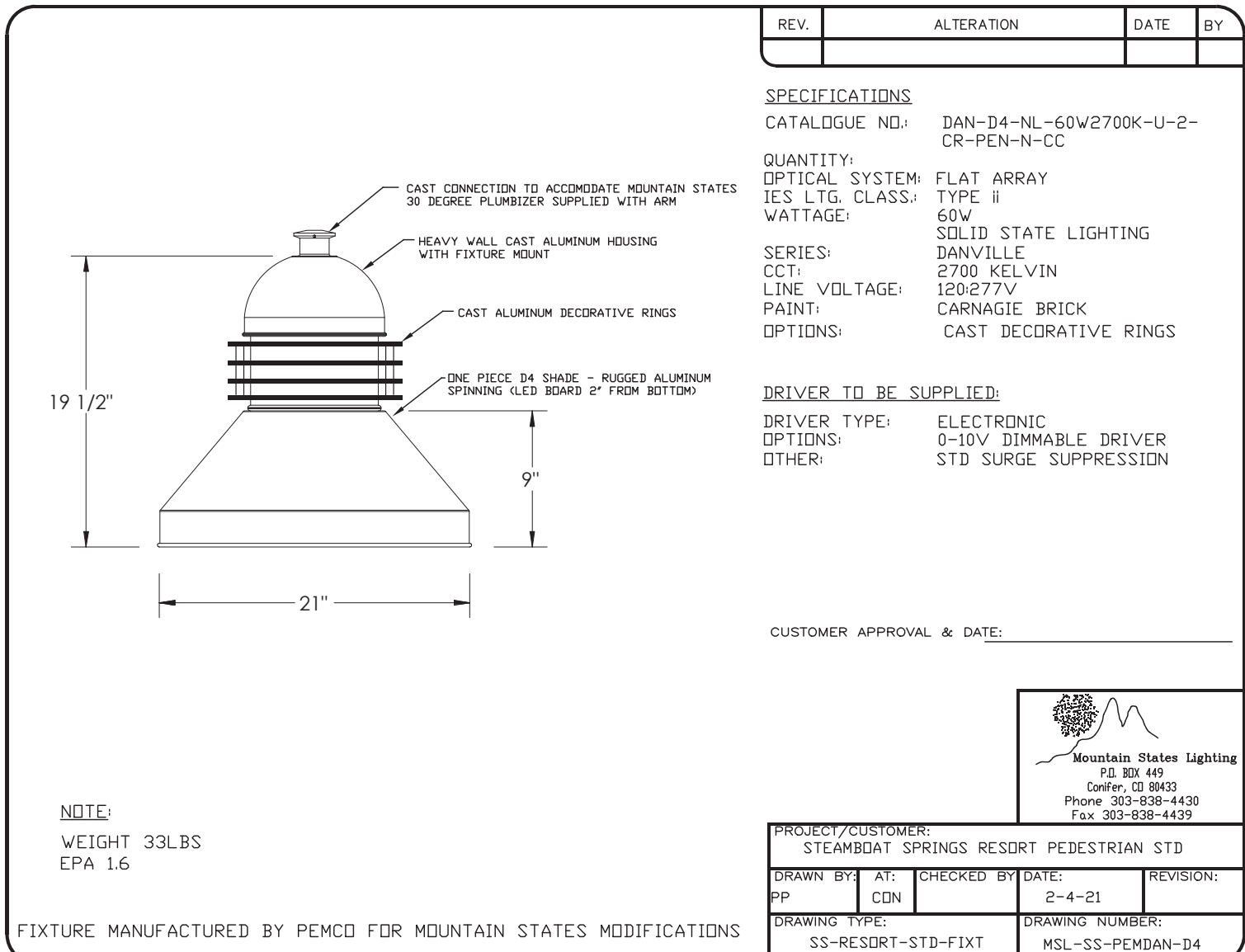
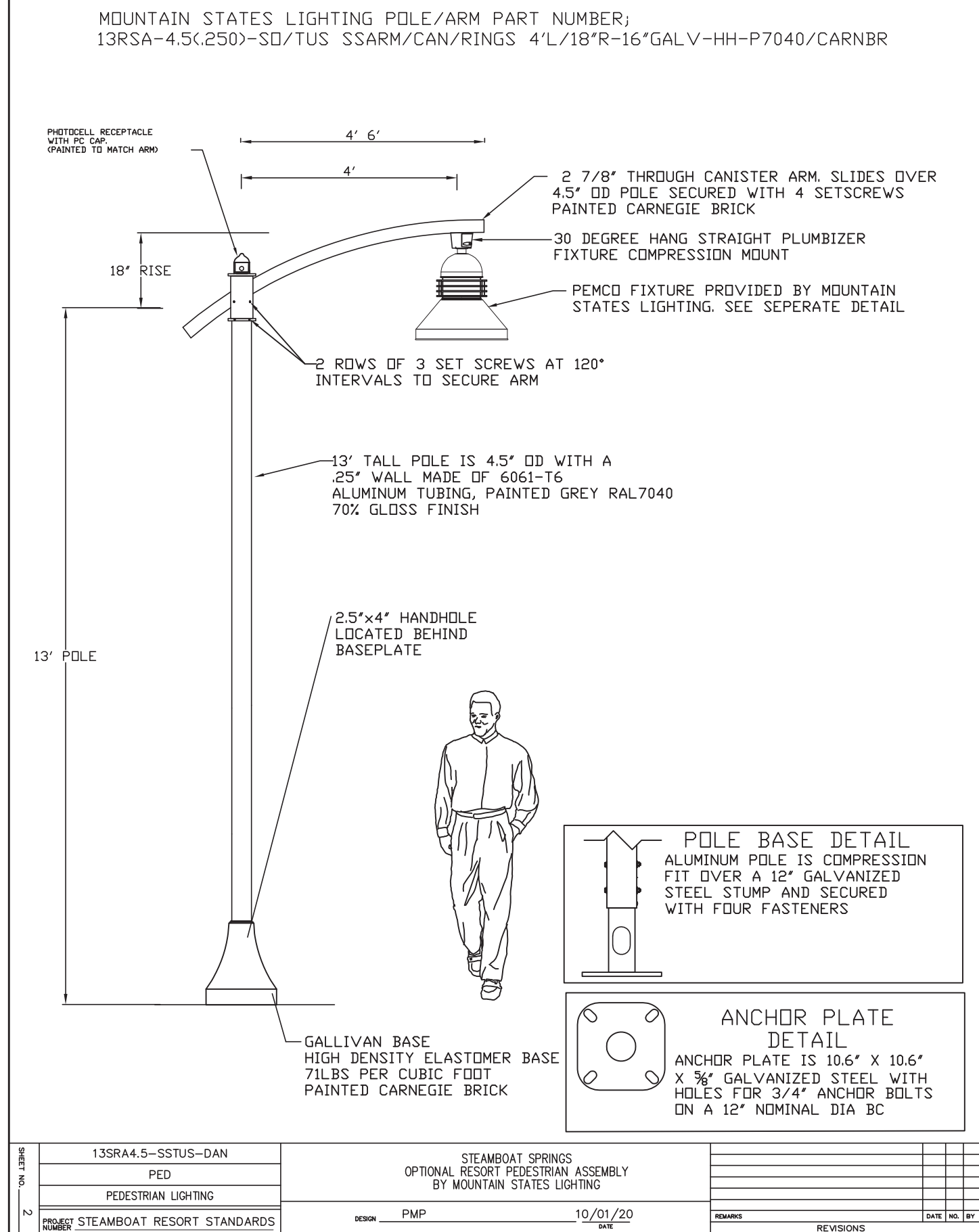




Autodesk Docs/TRC\_TBH/23134\_1965 STS\_THUNDERHEAD\_L73 REV2.rvt 10/3/2024 3:16:48 PM

PP1

FINISH: POLE TO BE GREY RAL7040, ARM AND GALLIVAN BASE TO BE CARNEGIE BRICK



PP2 AND PP2A

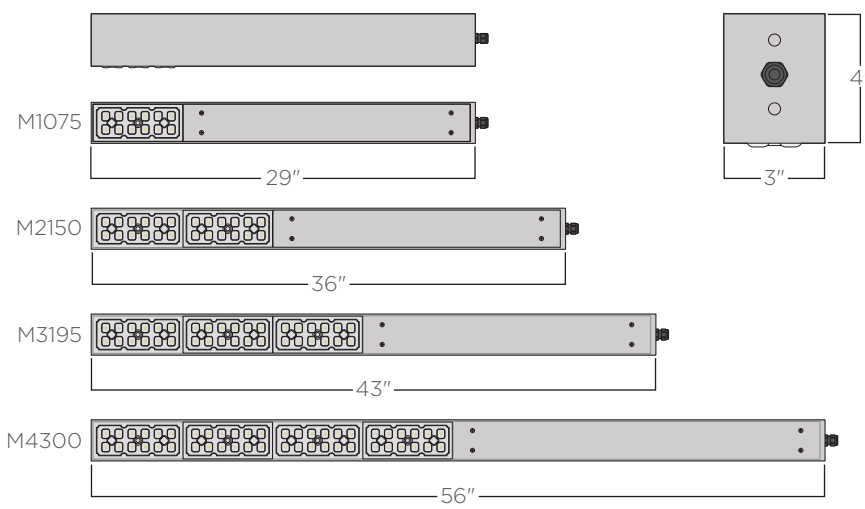
Lineal LED Luminaire

structura

structura

FIXTURE TYPE: \_\_\_\_\_

PROJECT NAME: \_\_\_\_\_



SPECIFICATIONS:

**CONSTRUCTION:** Seamless aluminum housing comprised of 6005A-T6 extrusion and 6061-T6 end plates. Gasketed aluminum electrical access cover attached with captive stainless steel hardware and safety cable.

**ELECTRICAL:** Integral Class P, 120-277V or 347-480V, dimmable constant current driver. Luminaire is pre-wired with watertight 5 conductor 18 gauge 5-EDCV whip. 10KA surge suppression is standard with optional external 20KA surge suppression. Operating temperature of -40°C to 50°C.

**OPTICAL SYSTEM:** LED boards have solderless connections for field upgradability. Available in CCT of 2700, 3000, 3500, and 4000K. >80 CRI. Optics are UV resistant molded PMMA in Type II and IV distributions. Consult factory for additional lumen output, CCT, and optical distribution options.

**CONTROLS:** Dimming through 0-10V input is standard. Available with integral motion sensor with photocell providing on/off and full light to dim control. Also available with wireless smart city control. See [SmartCity](#) control documentation for more information.

**FINISHES:** All exterior aluminum parts are polyester powder coat painted to meet AAMA 2604 standards. See Structura's finish options for available colors. [Care and Maintenance](#)

**LISTINGS & RATINGS:** Luminaire CSA listed according to CSA C22.2 No. 250.0-18/UL Standard 1598. Suitable for wet locations. UL-80 test reported L70 > 90,000 hours and calculated L70 > 110,000 hours. Bug rating: BI-UO-GI, IP65 rated.

**WARRANTY:** 5-year warranty on LED and drivers.



104 ©2024 STRUCTURA, INC.



mA	Wattage	CRI	2700K Lumen <sup>(1)</sup>	2700K Efficacy <sup>(1)</sup>	3000K Lumen <sup>(1)</sup>	3000K Efficacy <sup>(1)</sup>	3500K Lumen <sup>(1)</sup>	3500K Efficacy <sup>(1)</sup>	4000K Lumen <sup>(1)</sup>	4000K Efficacy <sup>(1)</sup>	EPA	Weight
750	40	>80	4164	103.3	4266	105.9	4437	110.1	4620	114.6	0.81H <sup>(2)</sup>	12.3lbs.
1500	76	>80	8327	109.6	8532	112.3	8837	116.8	9240	121.6	1.00H <sup>(2)</sup>	14.2lbs.
1950	104	>80	10825	104.0	11091	106.6	11535	110.9	12012	115.5	1.19H <sup>(2)</sup>	16.2lbs.
3000	152	>80	16653	109.6	17063	112.3	17745	116.7	18479	121.6	1.55H <sup>(2)</sup>	20.7lbs.

**ORDERING GUIDE:** EXAMPLE: LIN-M2150-LNV-L30-4-CL-5P-WC-M5/L3-STD

LIN	1	2	3	4	5	6	7	8	9
1	Series	4	Color Temperature <sup>(2)</sup>	7	Mounting				
LIN	Lineal	L27	2700K <sup>(3)</sup>	SP	Structura Pole <sup>(4)</sup>				
2	Output <sup>(2)</sup>	L30	3000K <sup>(3)</sup>	ST	Square steel pole by Structura <sup>(5)</sup>				
M1075	750mA	L40	3500K	NA	Pole by Others				
M180	1500mA	L40	4000K	NA					
M195	1950mA	5	Amber						
M4300	3000mA	5							
3	Voltage	2	Distribution <sup>(6)</sup>	HSS	House-Side Shield				
UNV	120-277V	4	Type I	SP	5-pin Receptacle				
HIGH	347-480V	6	Type IV	MSL*	Motor Sensor/Photoeye <sup>(7)</sup>				
		C*	Metal Finish	WC	Hubbell NX controls				
		CSM	See color options on Finish technical sheet		Wireless Control <sup>(7)</sup>				
			Custom Color	STD	Special				
					Standard				

1. Lumen output based upon Type I distribution.  
2. Contact factory for alternative output, CCT, and distribution options.  
3. CCT of 2700K or 3000K color temperature required for DarkSky Approved.  
4. Structura pole specification sheet must be completed showing mounting locations and quantities as a separate item.  
5. Specify steel pole on page 108 as a separate item.  
6. Specify coverage pattern (see page 107 for detail). Requires wireless handheld configuration tool.  
7. Synapse Wireless site gateway controller must be ordered separately. Please contact factory for design assistance.

Product specification sheets subject to change.

©2024 STRUCTURA, INC. 105

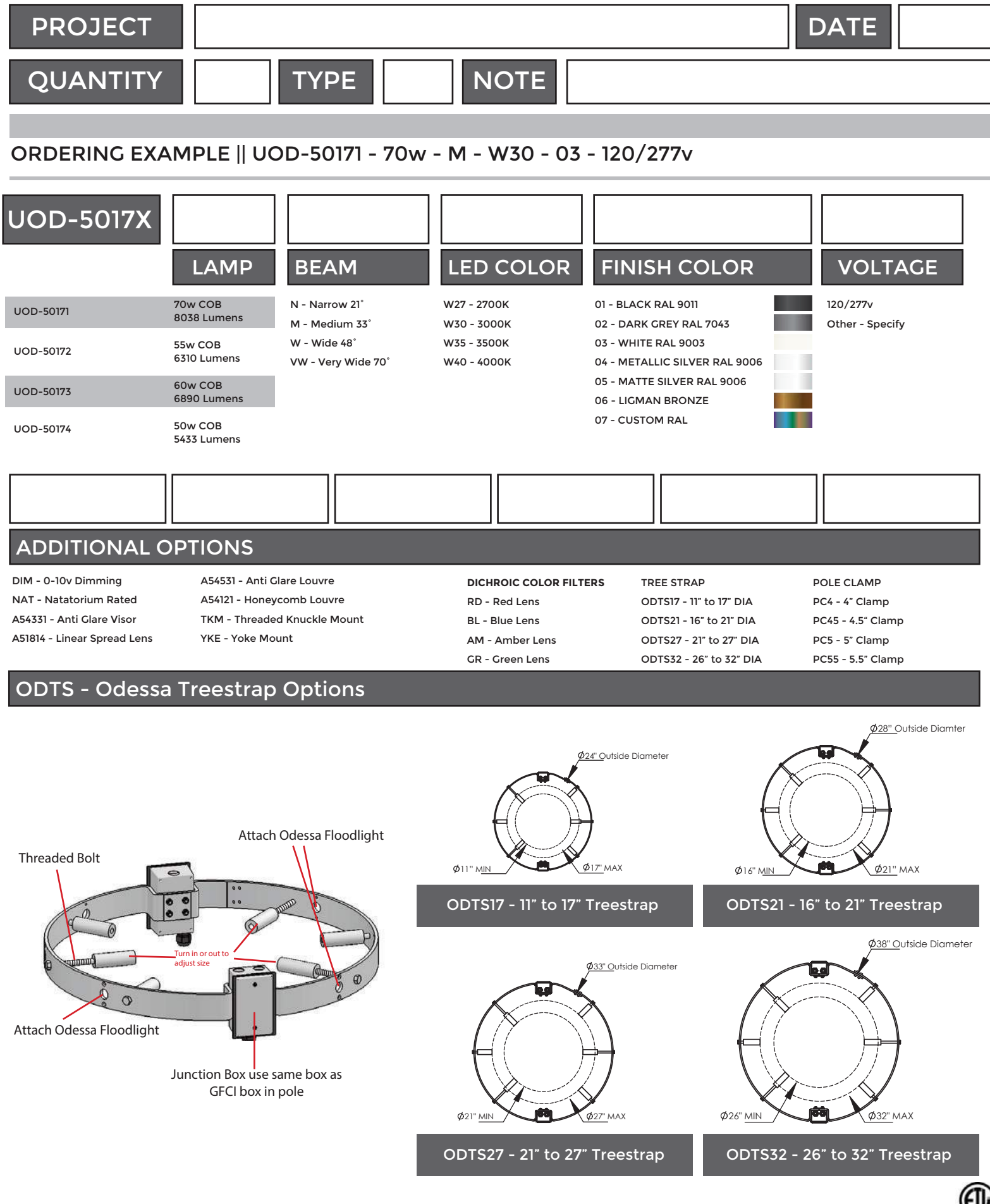
PP3

UOD-5017 Last Digit Signifies Wattage (See Below)  
Odessa 15 Large Floodlight Threaded Knuckle Mount

**LIGMAN**  
LIGHTING USA

UOD-5017 Last Digit Signifies Wattage (See Below)  
Odessa 15 Large Floodlight Threaded Knuckle Mount

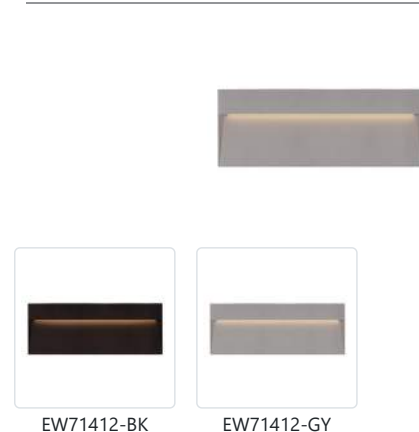
**LigMAN**  
LIGHTING USA



SL1

CASA  
EW7142

WALL



EW7142-BK  
Black

EW7142-GY  
Gray

EW7142-BK  
Black

EW7142-GY  
Gray

EW7142-BK  
Black

EW7142-GY  
Gray

EW7142-BK  
Black

EW7142-GY  
Gray

EW7142-BK  
Black

EW7142-GY  
Gray

EW7142-BK  
Black

EW7142-GY  
Gray

EW7142-BK  
Black

EW7142-GY  
Gray

EW7142-BK  
Black

EW7142-GY  
Gray

EW7142-BK  
Black

EW7142-GY  
Gray

EW7142-BK  
Black

EW7142-GY  
Gray

EW7142-BK  
Black

EW7142-GY  
Gray

EW7142-BK  
Black

EW7142-GY  
Gray

EW7142-BK  
Black

EW7142-GY  
Gray

EW7142-BK  
Black

EW7142-GY  
Gray

EW7142-BK  
Black

EW7142-GY  
Gray

EW7142-BK  
Black

EW7142-GY  
Gray



NOT FOR  
CONSTRUCTION

1965 SKI TIME SQUARE DRIVE  
STEAMBOAT SPRINGS, CO 80487

REVISIONS:  
NO DATE DESCRIPTION

PROJECT NUMBER:  
123134.00

DATE:  
10/04/2024

ISSUED FOR:  
DP - REV2

SHEET TITLE:  
BUILDING LIGHTING -  
CUTSHEETS - 3

SHEET NUMBER

LI.302