



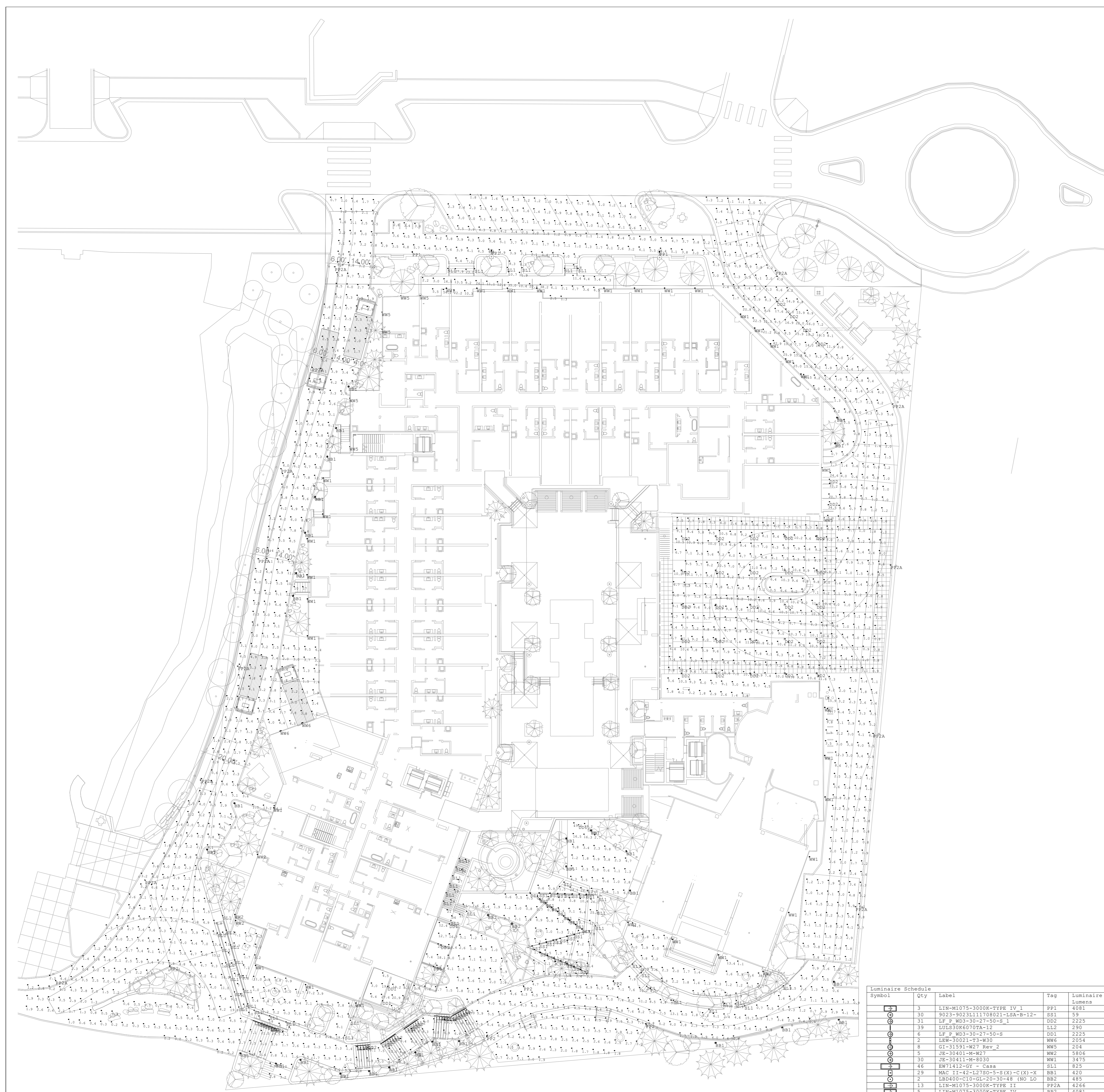
NOT FOR
CONSTRUCTION

1965 SKI TIME SQUARE DRIVE STEAMBOAT SPRINGS, CO 80487

REVISIONS:
NO DATE DESCRIPTION

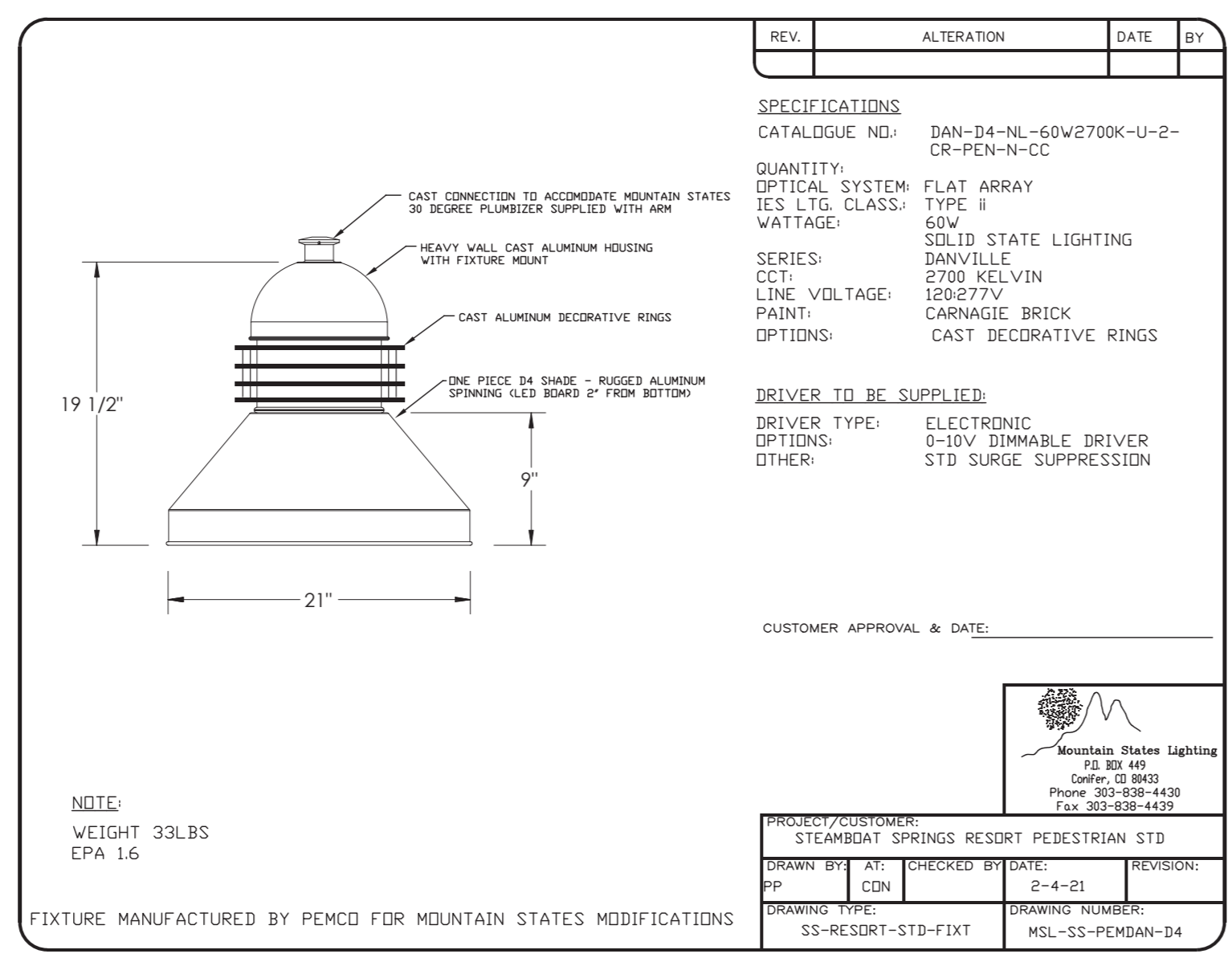
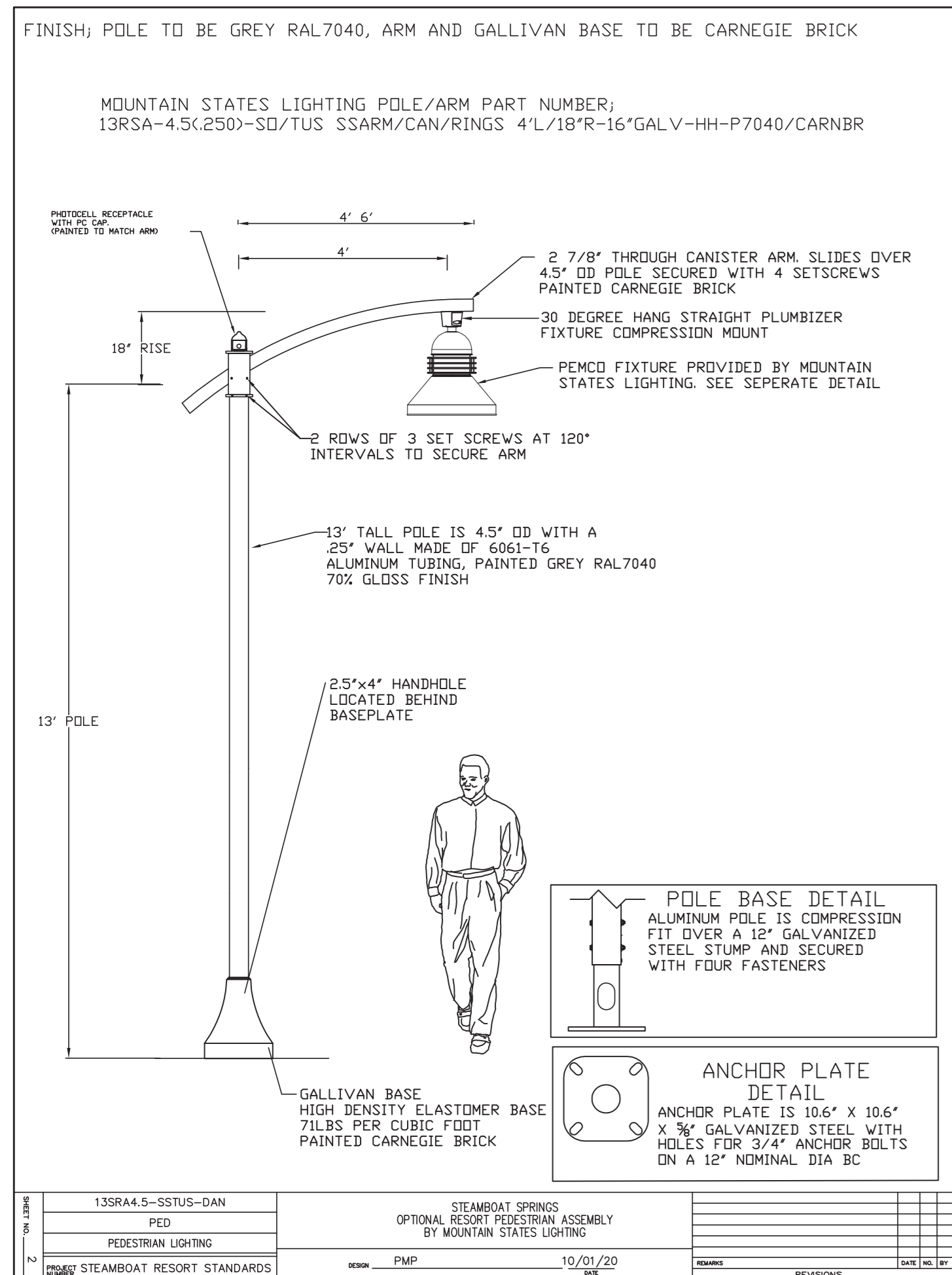
PROJECT NUMBER:
123134.00
DATE:
10/04/2024
ISSUED FOR:
2024-10-04 DP
SHEET TITLE:
**SITE LIGHTING
PHOTOMETRIC**

SHEET NUMBER
LI.100



Symbol	Qty	Label	Feet	Luminaire Lumens
○	3	L1N-M1075-3000K-TYPE IV 1	PP1	4081
○	30	R021-P022511170021-2BA-B-12C	BB1	59
○	31	LP P-W03-10-21-50-B 1	DD1	2225
○	19	LD13100001075-15	LL1	290
○	6	LP P-W03-10-21-50-B	DD1	2225
○	2	L1N-M1075-3000K-TYPE IV 2	PP1	4081
○	6	GI-31591-WET Rev. 2	WES	204
○	5	JE-10401-M-WET	WET	5806
○	30	JE-10411-M-R300	WES	1415
○	46	BR71412-GY - Casa	BL1	825
○	29	MK I1-45-12100-8-8(X)-C (X)-8	BB1	420
○	2	LW0400-010-G1-20-10-48 (NO LO	BB1	480
○	13	L1N-M1075-3000K-TYPE IV 1	PP1A	4266
○	5	L1N-M1075-3000K-TYPE IV	PP1	4081

PP1



PP2 AND PP2A

Lineal LED Luminaire

STRUCTURA

STRUCTURA

FIXTURE TYPE _____

PROJECT NAME _____

Lineal mounted on Structura pole

Lineal mounted on Structura pole

13R5A-4.5-STATUS-DAN

OPTIONAL RESORT PEDESTAL ASSEMBLY BY MOUNTAIN STATES LIGHTING

STEAMBOAT SPRINGS RESORT PEDESTAL STD

DATE: 10/07/20

10/07/20

SPECIFICATIONS:

CONSTRUCTION: Seamless aluminum housing comprised of 6005A-T6 extrusion and 6061-T6 end plates. Gas-filled aluminum electrical access cover attached with captive stainless steel hardware and safety cable.

ELECTRICAL: Integral Class P, 100-277V or 347-480V, dimmable constant current driver. Luminaire is pre-wired with watertight 5 conductor 18 gauge 5-ECONV whip. 300A surge suppression is standard with optional external 20KA surge suppression. Operating temperature of -40°C to 50°C.

OPTICAL SYSTEM: LED boards have solderless connections for field upgradability. Available in CCT of 2700, 3000, 3500, and 4000K. >80 CRI. Optics are UV resistant molten PMMA in Type II and IV distributions. Consult factory for additional lumen output, CCT, and optical distribution options.

CONTROLS: Dimming through 0-10V input is standard. Available with integral motion sensor with photocell providing on/off and full light to dim control. Also available with wireless smart city control. See SmartCity control documentation for more information.

FINISHES: All exterior aluminum parts are polyester powder coat painted to meet AAMA 2604 standards. See Structura's finish options for available colors. [Care and Maintenance](#)

LISTINGS & RATINGS: Luminaire CSA listed according to CSA C22.2 No. 250.0-08/UL Standard 1599. Suitable for wet locations. IAH-80 test reported L70 > 90,000 hours and calculated L70 > 100,000 hours. Bug rating: BI-UO-G1 IP66 rated.

WARRANTY: 5-year warranty on LED and drivers.

mA	Wattage	CRI	2700K Lumen ⁽¹⁾	2700K Efficacy	3000K Lumen ⁽¹⁾	3000K Efficacy	3500K Lumen ⁽¹⁾	3500K Efficacy	4000K Lumen ⁽¹⁾	4000K Efficacy	EPA	Weight
750	40	>80	4164	103.3	4266	105.9	4457	110.1	4620	114.6	0.81H ⁽²⁾	12.3lbs.
1500	76	>80	8327	109.6	8532	112.3	8837	116.8	9240	121.6	1.00H ⁽²⁾	14.2lbs.
1950	104	>80	10825	104.0	11091	106.6	11555	110.9	12012	115.5	1.19H ⁽²⁾	16.2lbs.
3000	152	>80	16653	109.6	17063	112.3	17745	116.7	18479	121.6	1.55H ⁽²⁾	20.7lbs.

ORDERING GUIDE: EXAMPLE: LIN-M2150-LV0-L30-4-C4-5P-WC-M5/L3-STD

LIN	1	2	3	4	5	6	7	8	9
1	2	3	4	5	6	7	8	9	

LIN	Series	4	Color Temperature ⁽¹⁾	7	Mounting
LIN	L17	L27	2700K ⁽¹⁾	SP	Structure Pole ⁽⁴⁾
2	L30	L35	3000K ⁽¹⁾	ST	Square steel pole by Structura ⁽⁵⁾
M1075	750mA	L40	4000K	NA	Pole by Others
M1950	1500mA	A4B	4000K Amber	8	Options
M4300	3000mA	5	Distribution ⁽³⁾	HSS	House-Side Shield
3	Voltage	2	Type II	SP	5-Pin Receptacle
LWV	100-277V	4	Type IV	MSL*	Motion Sensor/Photoeye ⁽⁶⁾
HSH	347-480V	5	Metal Finish	NX	Hubbell NX controls
		6	See color options on Finish technical sheet	WC	Wireless Control ⁽⁷⁾
		C*		9	Special
		CSM		STD	Standard

1. Lumen output based upon Type II distribution.
 2. Contact factory for alternative output, CCT and distribution options.
 3. CCT of 2700K or 3000K color temperature required for DarkSky Approval.
 4. Structure pole specification sheet must be completed showing mounting locations and quantities as a separate item.
 5. Specify steel pole on page 106 as a separate item.
 6. Specify coverage pattern (see page 107 for details). Requires wireless handheld configuration tool.
 7. Specify Wireless site gateway controller must be ordered separately. Please contact factory for design assistance.

Product specification sheets subject to change.

©2024 STRUCTURA, INC. 105

NOT FOR CONSTRUCTION

PP3

UOD-5017 ← Last Digit Signifies Wattage (See Below)

Odessa 15 Large Floodlight Threaded Knuckle Mount

LIGMAN LIGHTING USA

UOD-5017 ← Last Digit Signifies Wattage (See Below)

Odessa 15 Large Floodlight Threaded Knuckle Mount

LIGMAN LIGHTING USA

Construction

Aluminum Casting
Less than 1% copper content - Marine Grade 6060 extruded & LM6 Aluminum High Pressure die casting provides excellent mechanical strength, clean detailed product lines and excellent heat dissipation.

Pre-paint
5 step degrease and phosphate process that includes deoxidizing and etching as well as a zinc and nickel phosphate process before product painting.

Memory Retentive - Silicon Gasket
Provided with special gasket for purpose - long life high temperature memory retentive action gasket. Maintains the gaskets exact profile and seal over years of use and compression.

Thermal management
LM6 Aluminum is used for its excellent mechanical strength and thermal dissipation properties in low and high ambient temperatures. The superior thermal heat sink design by Ligman used in conjunction with the driver, controls thermal below critical temperature range to ensure maximum luminous flux output, as well as providing long LED service life and ensuring less than 10% lumen depreciation at 50,000 hours.

Surge Suppression
Standard 10kV surge suppressor provided with all fixtures.

BUC Rating
B3 - U1 - G0

Finishing
All Ligman products go through an extensive finishing process that includes finishing to improve paint adherence.

Paint
UV Stabilized 4.9Mil thick powder coat paint and baked at 200 Deg C. This process ensures that Ligman products can withstand harsh environments. Rated for use in rainstorms.

Hardware
Provided Hardware is Marine grade 316 Stainless steel.

Anti-Slip Screw Holes
Tapped holes are infused with a special anti-slip compound designed to prevent capture of threaded connections, due to electrolysis from heat, corrosive atmospheres and moisture.

Crystal Clear Low-Iron Glass Lens
Provided with tempered, impact resistant crystal clear low iron glass ensuring no green glass tinge.

Optics & LED
Precision optic design provides exceptional light control and precise distribution of light. LED CRI > 80

Lumen - Maintenance Life
LED L70 at 50,000 hours (This means that at least 90% of the LED still achieve 80% of their original flux)

Stylish adjustable projector range. Naturally beautiful and unique contemporary family. Odessa packs a punch with an abundance of options and accessories.

The Odessa family of floodlights have a modern aesthetic design and are a perfect lighting solution for most small to medium size spotlight and flood light requirements. The floodlights can be aimed and locked in place to highlight specific features or elements in the environment, as well as provide security when illuminating dark areas on campuses and parks.

The luminaire has integrated heat sinks to facilitate LED cooling, as well as an integral driver. The Odessa is available in Narrow, Medium, Wide and Very Wide light distributions. Color temperature 2700K, 3000K, 3500K and 4000K. Luminaire has optional accessories, such as a ground spike, visors, louvers, and linear spread lenses.

For non standard fixture variations, as well as specific reflector requirements and, please contact the factory. 3 mounting options are available, namely yoke mount, pedestal and 1/2" threaded knuckle system with a fully rotatable with locking screw option for after installation aiming.

Additional Options (Consult Factory For Pricing)

AS431 Anti-Glare Visor
AS432 Anti-Glare Louver
AS433 Honeycomb Louver
TKM - Threaded Knuckle Mount
YKE - Yoke Mount

DIAPHANOUS COLOR FILTERS
B0 - Red Lens
BL - Blue Lens
AM - Amber Lens
GR - Green Lens

TREE STRAP
ODT517 - 11" to 17" DIA.
ODT521 - 16" to 21" DIA.
ODT527 - 21" to 27" DIA.
ODT532 - 26" to 32" DIA.

POLE CLAMP
PC4 - 4" Clamp
PC4.5 - 4.5" Clamp
PC5 - 5" Clamp
PC5.5 - 5.5" Clamp

ODTS - Odessa Treestrap Options

Attach Odessa Floodlight

Threaded Bolt

Attach Odessa Floodlight

Junction Box use same box as GFCI box in pole

SL1

CASA EW71412

PROJECT _____

DESCRIPTION

This family of exterior wall-mounted fixtures is available in a variety of geometric forms: circle, square, and two different rectilinear configurations. Light is directed downward from a recess, and the incline allows the glow to radiate gradually. Varnishing thin and ideal for egress, courtesy, and grace lighting.

EW71412-BK Black

EW71412-GY Gray

FEATURE DIMENSIONS

Light Source: A2 LED Module

Wattage: 27W

Total Lumens: 1600lm

Delivered Lumens: 84-85lm: GV-825lm

Voltage: 120V

Color Temperature: 3000K

CRI (Ra): 90CRI

Optional Color Temp: 2700K - 5000K Available. Minimum Order Quantities Apply

LED Rated Life: 50,000 hours

Dimming: 100% - 10% ELY Dimmer (Not Included)

Glass Details: Clear Glass

ADA Compliant: Yes

Location: Wet

Paint Finish: R602, G161

* For custom options, consult factory for details.
 * For warranty information, please visit www.kuzco.com/warranty

COMMENTS

PROJECT NUMBER: 123134.00

DATE: 10/04/2024

ISSUED FOR: 2024-10-04 DP

SHEET TITLE: BUILDING LIGHTING - CUTSHEETS - 3

SHEET NUMBER: LI.302

©2024 KUZCO LIGHTING, INC. ALL RIGHTS RESERVED.

1965 SKI TIME SQUARE DRIVE
STEAMBOAT SPRINGS, CO 80487

REVISIONS:

NO	DATE	DESCRIPTION

PROJECT NUMBER: 123134.00

DATE: 10/04/2024

ISSUED FOR: 2024-10-04 DP

SHEET TITLE: BUILDING LIGHTING - CUTSHEETS - 3

SHEET NUMBER: LI.302