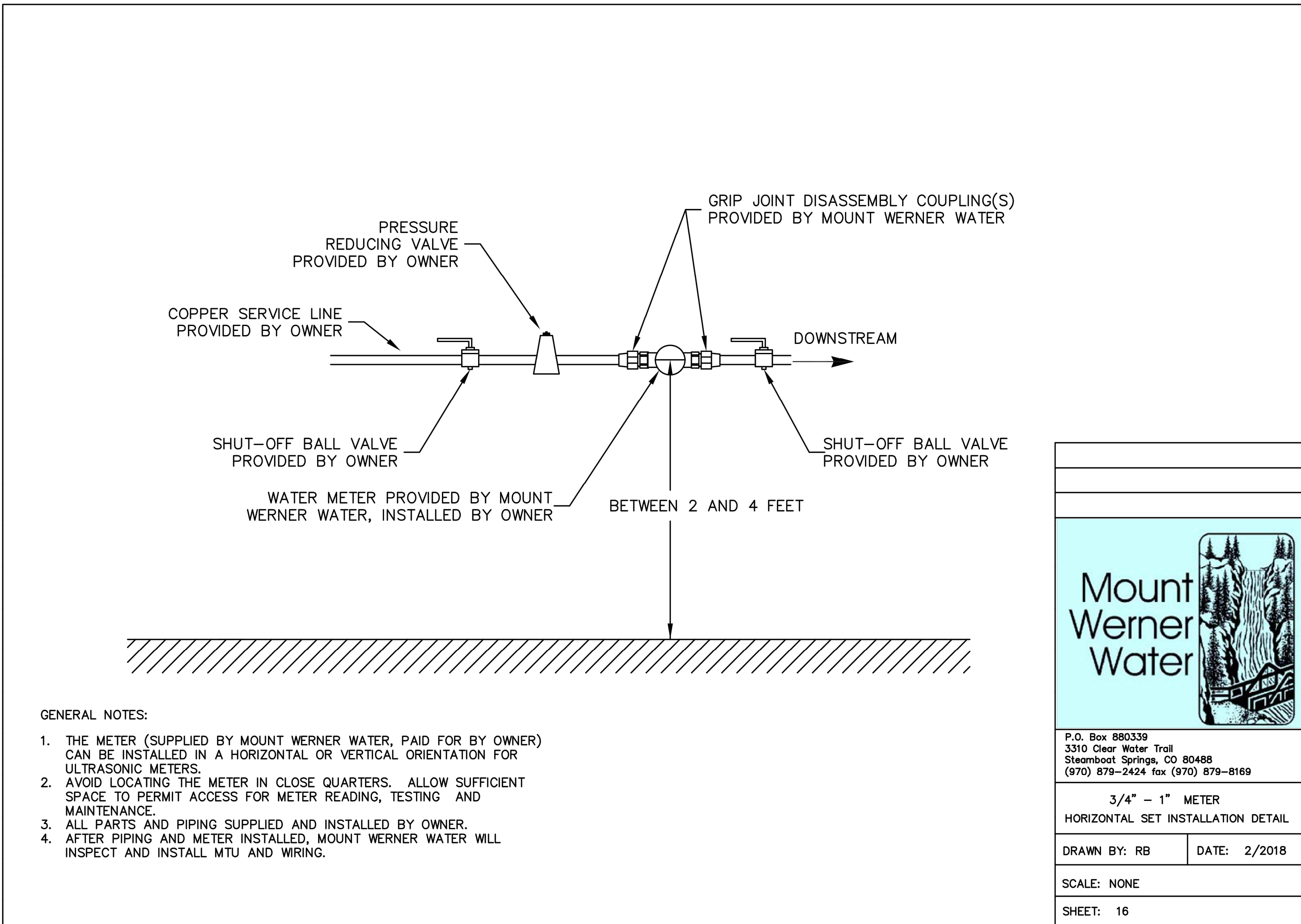
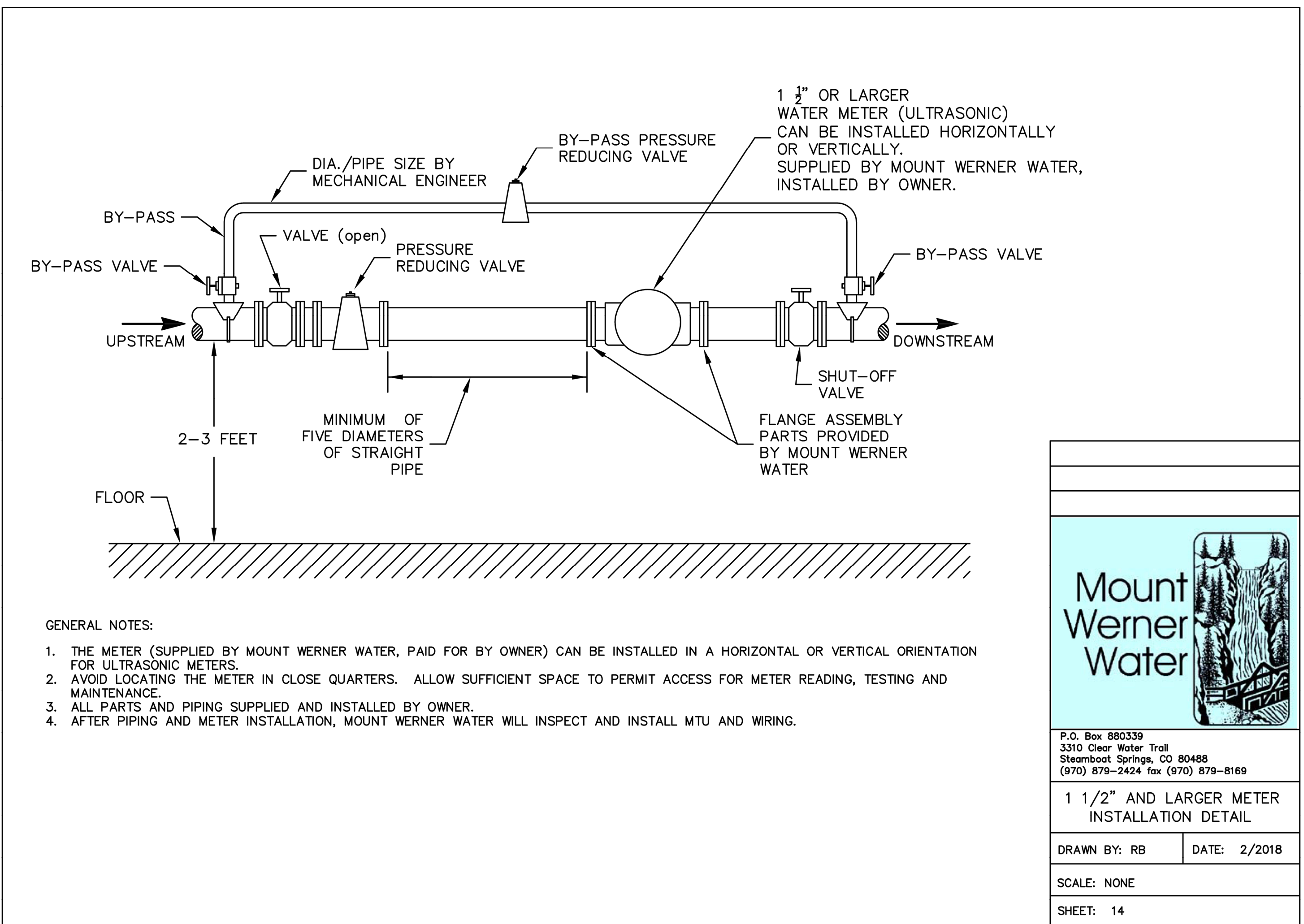
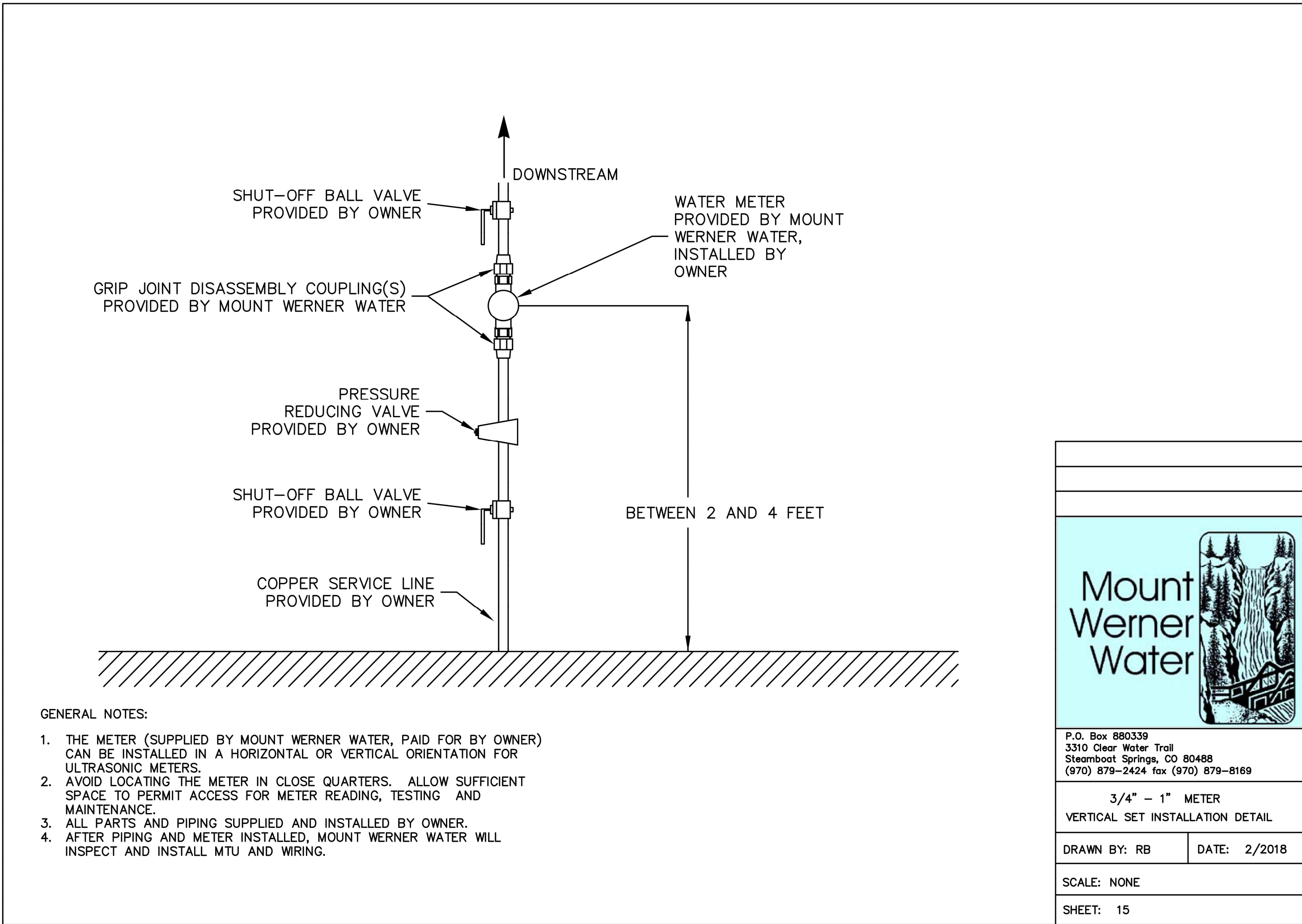
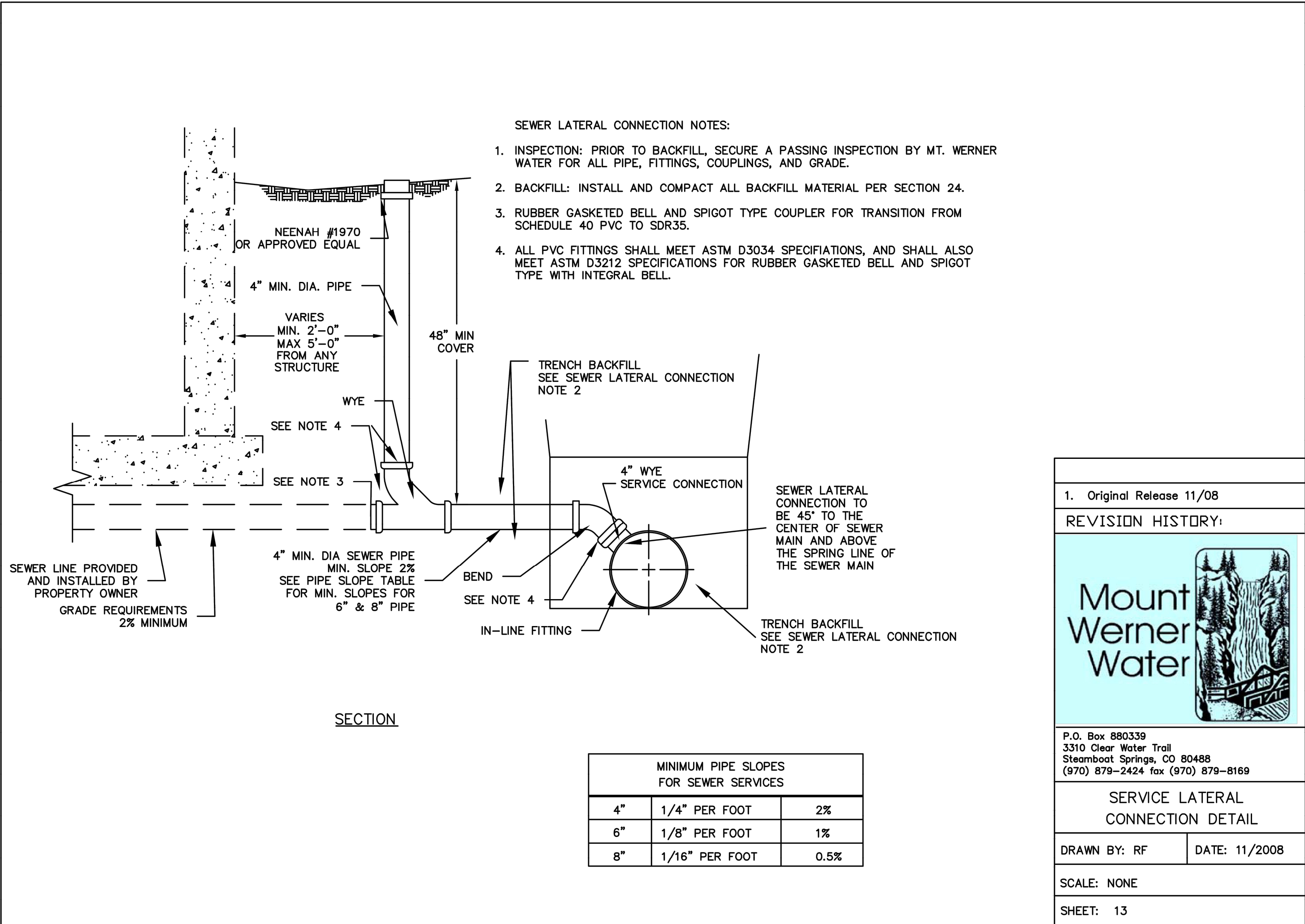


0: \\020235 Astrid-Edgemont Ph2\Drawings\Construction Documents\20235 DETAILS-CD.dwg, 5/15/2024 2:54:37 PM, Steve Batchelder



BASELINE

Engineering · Planning · Surveying

169 HILLTOP PKWY, SUITE 204 • STEAMBOAT SPRINGS, CO 80477
P. 970.879.825 • F. 303.940.9659 • www.baselinesurvey.com

DESIGNED BY	DATE	PREPARED BY	DATE	REVISION DESCRIPTION	INITIAL SUBMITTAL FOR CITY REVIEW	CITY COMMENTS	DESIGNED BY	DATE	PREPARED BY	DATE	REVISION DESCRIPTION	INITIAL SUBMITTAL FOR CITY REVIEW	CITY COMMENTS
SMB	2/29/2024	SMB	2/29/2024				TJM	5/15/2024					
MRB													

STEAMBOAT ESQUIAR LP

THE ASTRID
2410 SKI TRAIL LANE
MWW DETAILS IV

CITY OF STEAMBOAT SPRINGS
ROUTT COUNTY

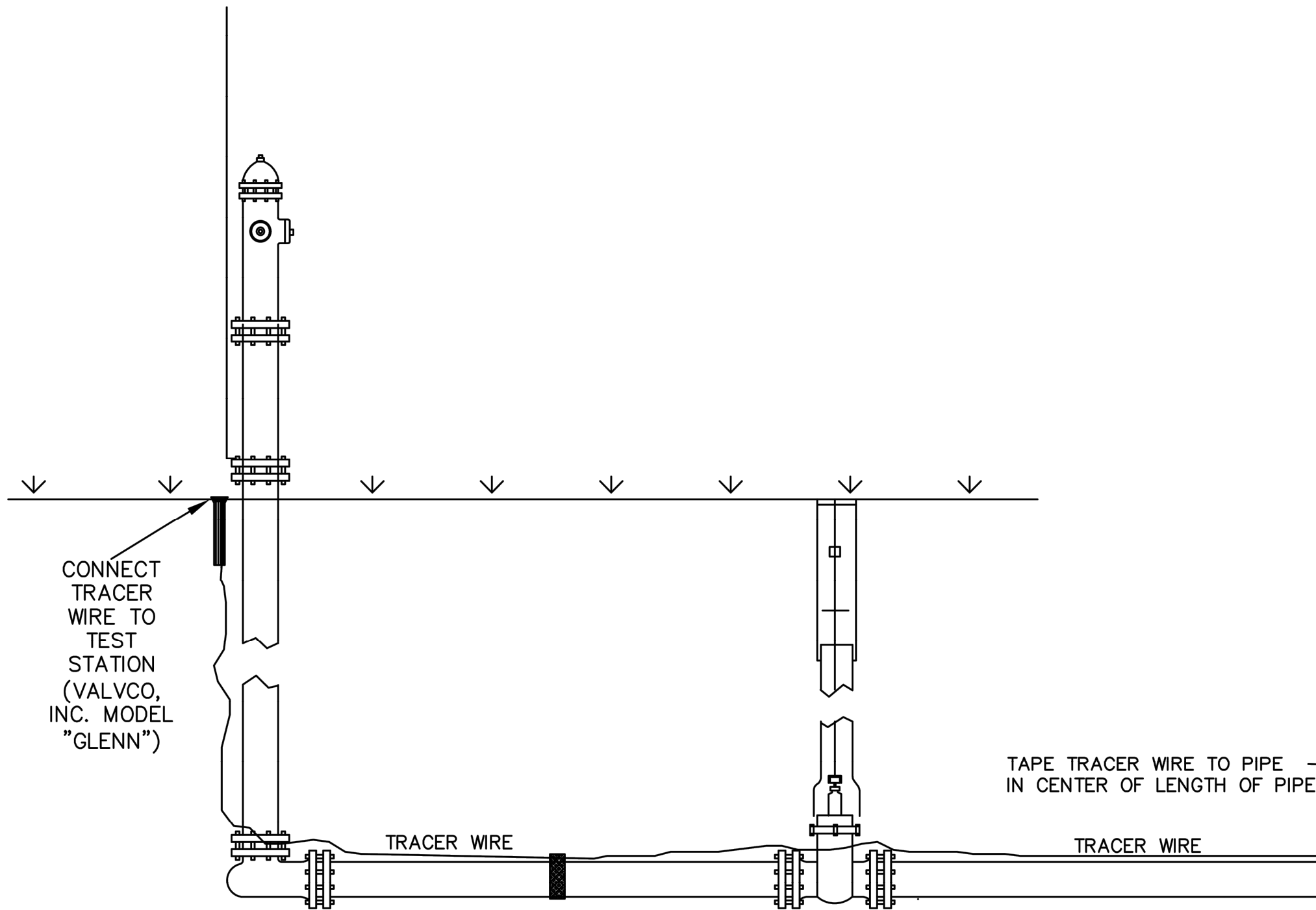
FOR AND ON BEHALF OF
BASELINE CORPORATION

34952
5-15-24
PROFESSIONAL ENGINEER

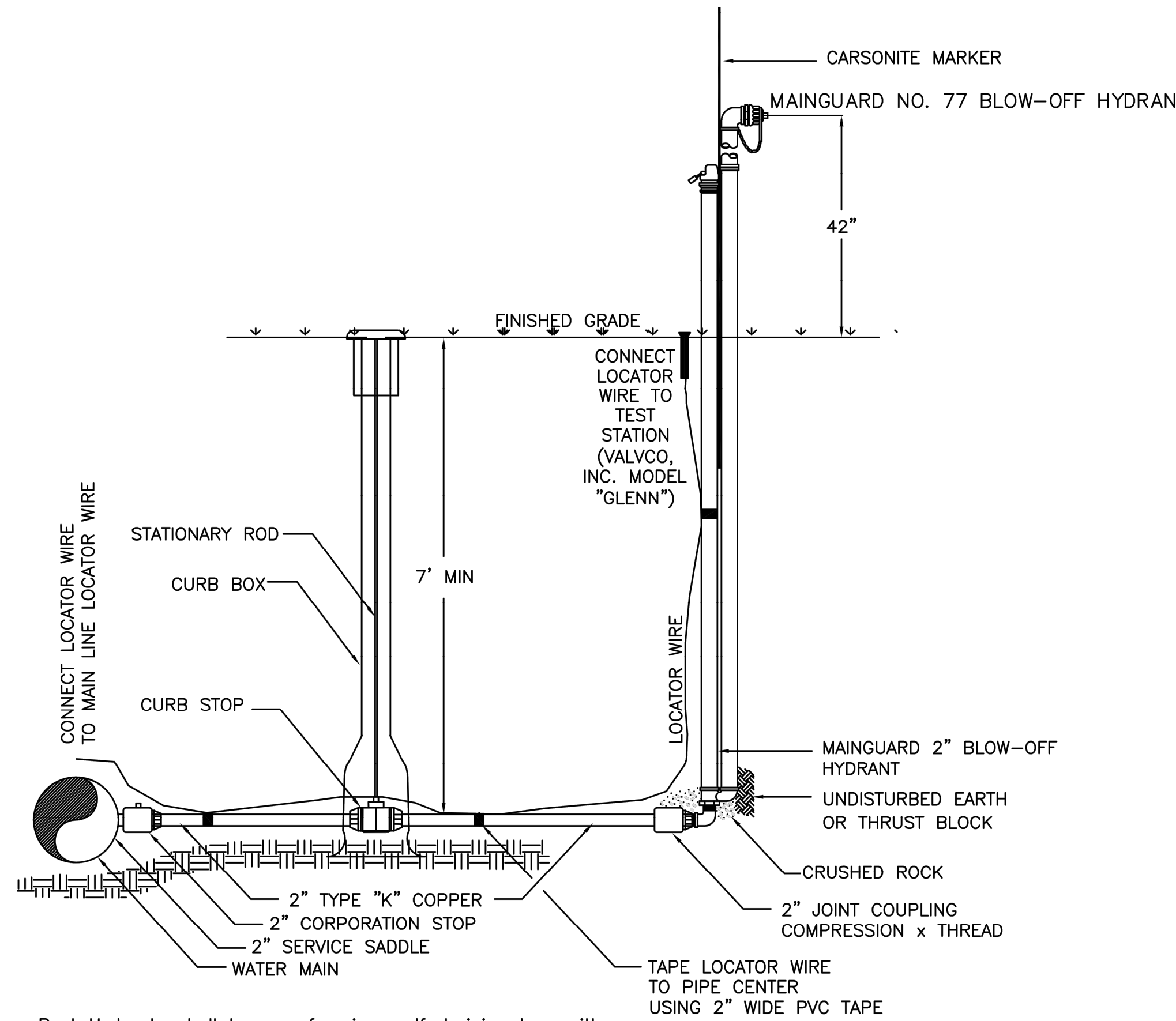
FOR AND ON BEHALF OF
BASELINE CORPORATION

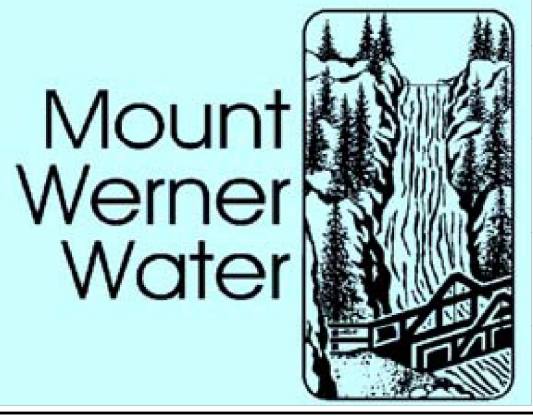
INITIAL SUBMITTAL 2/29/2024
DRAWING SIZE 24" X 36"
SURVEY FIRM LANDMARK, INC SURVEY DATE 06/03/22
JOB NO. C020235
DRAWING NAME MWW DETAILS IV
SHEET 56 OF 64

C56

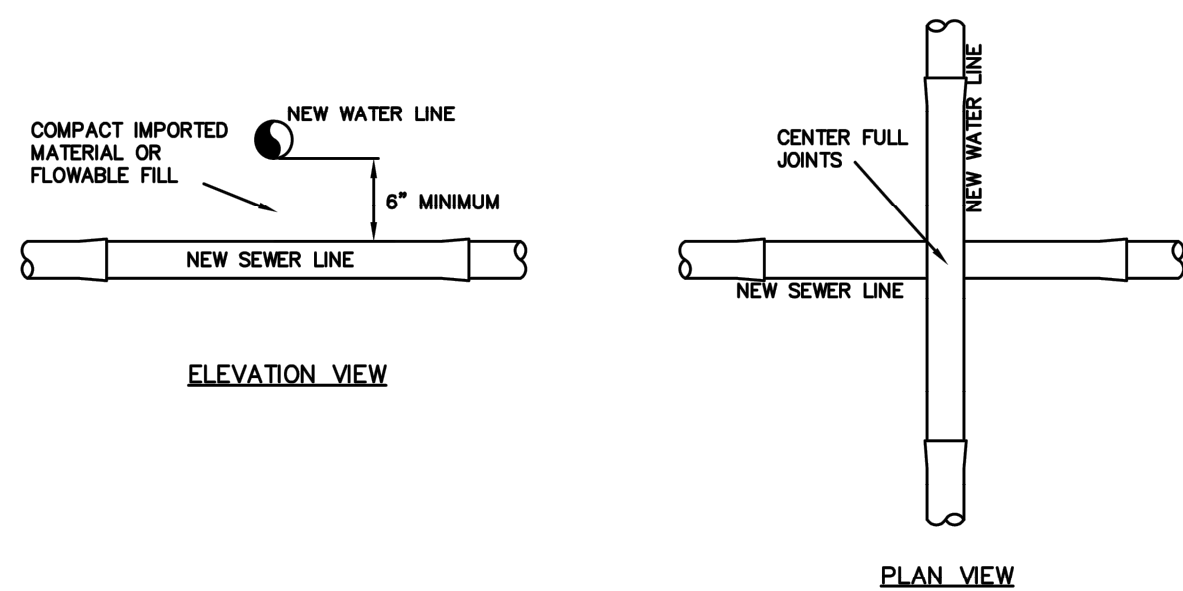


1. Initial release 2/04	
REVISION HISTORY:	
	
P.O. Box 880339 3310 Clear Water Trail Steamboat Springs, CO 80488 (970) 879-2424 fax (970) 879-8169	
TRACER WIRE INSTALLATION DETAIL	
DRAWN BY: RBS	DATE: 2/2004
SCALE: NONE	
SHEET: 17	

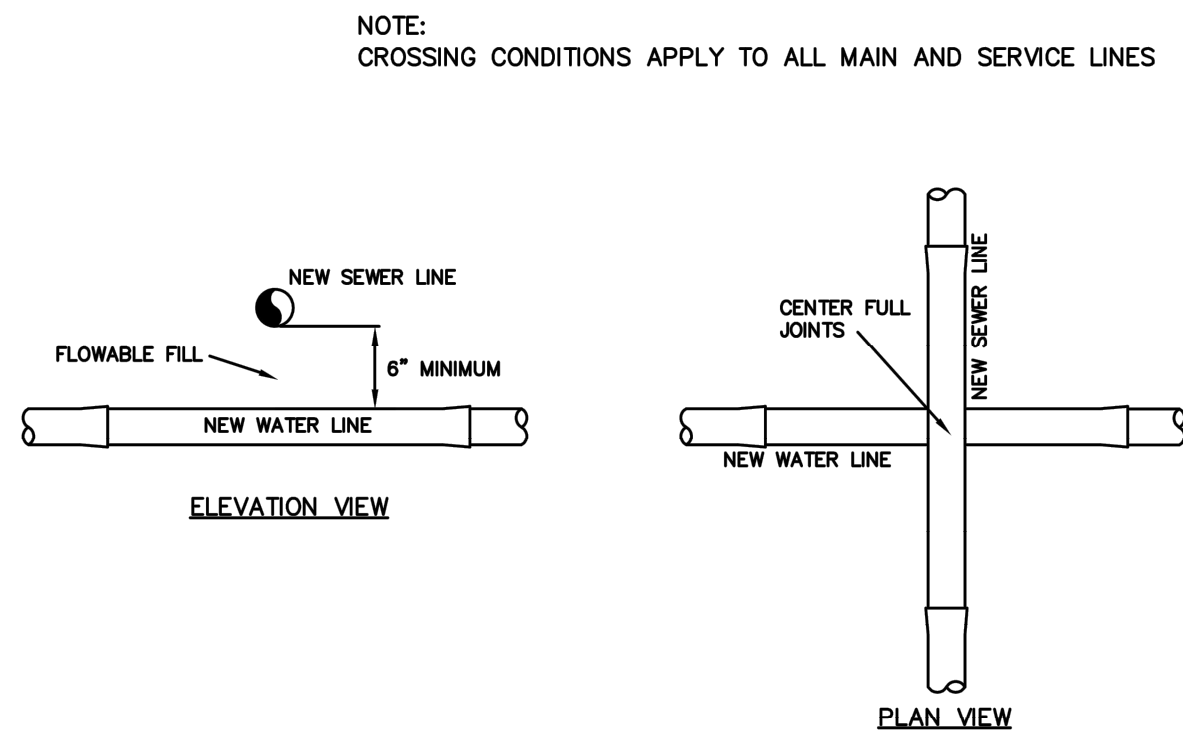


1. Initial Release 2/2001	
REVISION HISTORY:	
	
P.O. Box 880339 3310 Clear Water Trail Steamboat Springs, CO 80488 (970) 879-2424 fax (970) 879-8169	
2" BLOW-OFF HYDRANT DETAIL	
DRAWN BY: RBS	DATE: 2/2003
SCALE: NONE	
SHEET: 18	

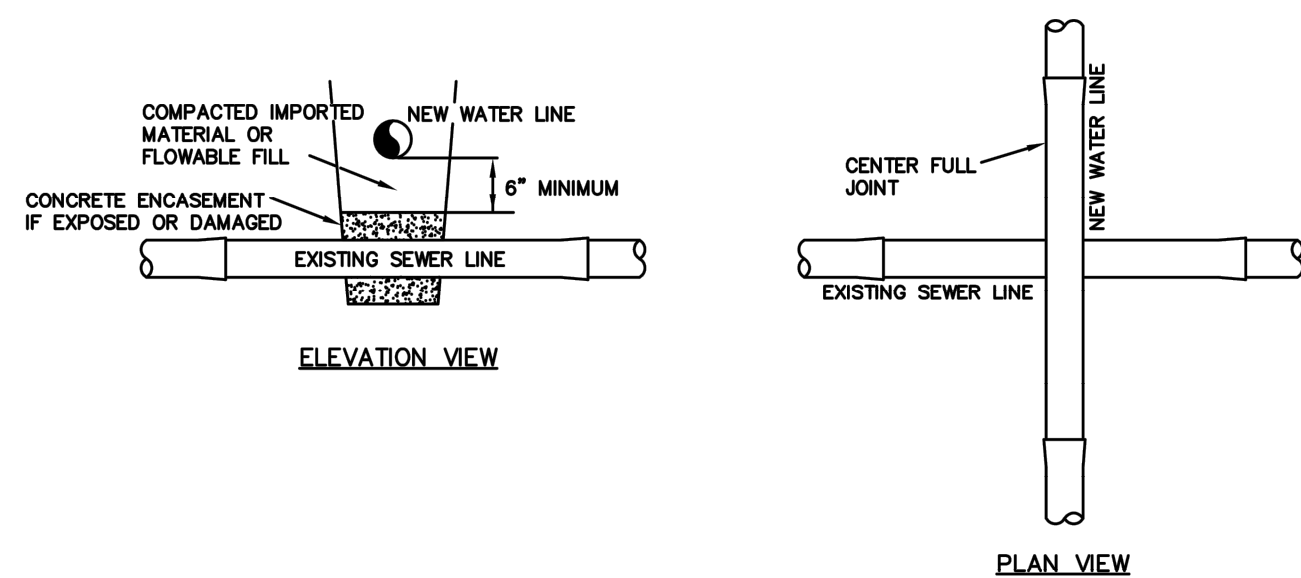
Post Hydrants shall be non-freezing, self draining type with a 7" bury. These hydrants will be furnished with a 2" FIP inlet, a non-turning operating rod, and shall open to the left. All of the working parts shall be of bronze-to-bronze design, and be servicable from above grade with no digging. The outlet shall also be bronze and be 2-1/2" NST. Hydrants shall be lockable to prevent unauthorized use as manufactured by Kupferle Foundry Co., St. Louis, MO, or approved equal.



CONDITION #1: NEW WATER LINE LESS THAN 18" ABOVE NEW SEWER LINE




CONDITION #2: NEW WATER LINE BELOW NEW SEWER LINE

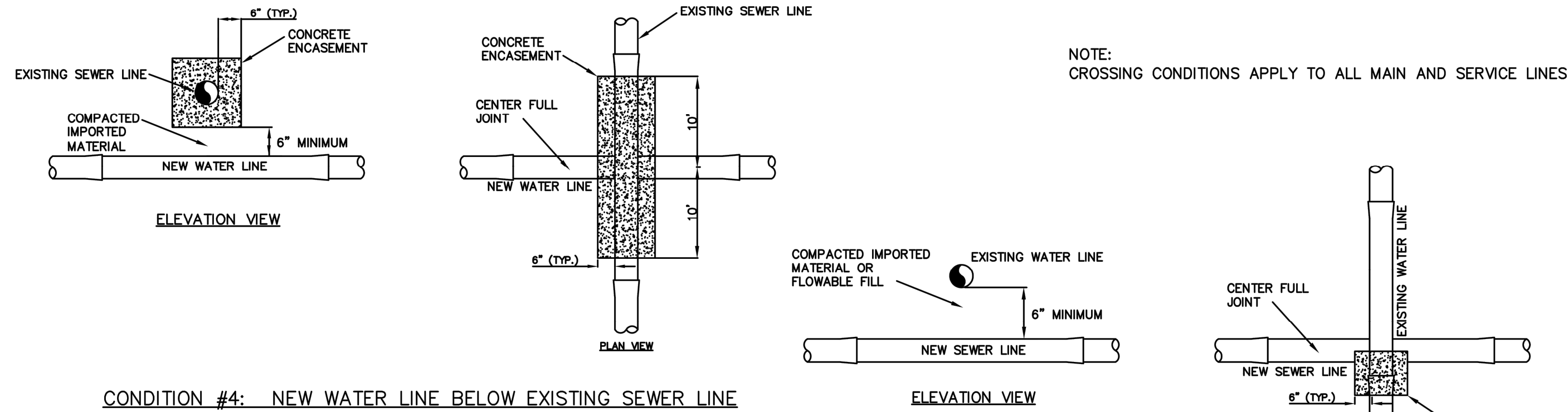


CONDITION #3: NEW WATER LINE LESS THAN 18" ABOVE EXISTING SEWER LINE

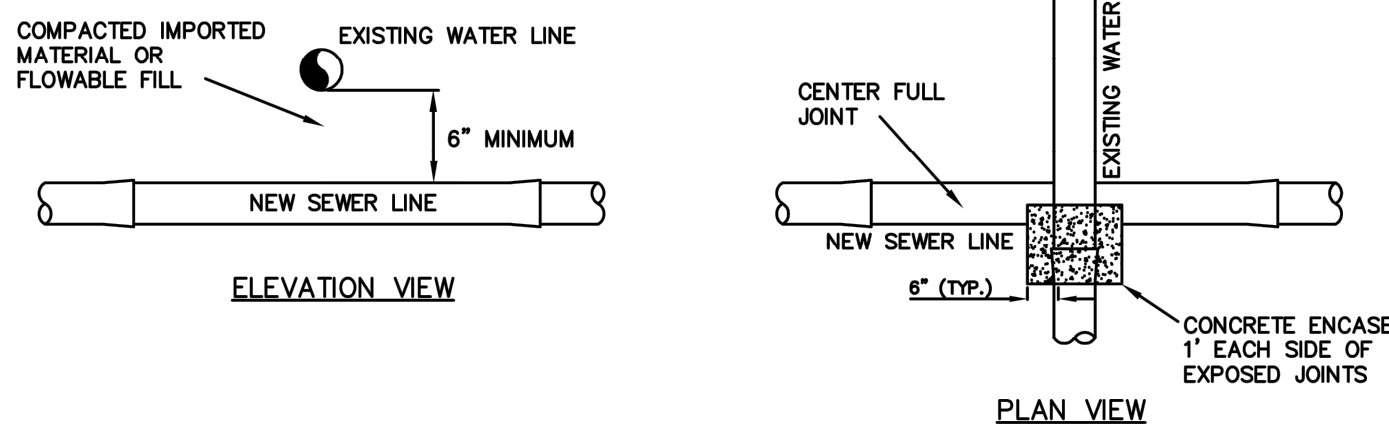
CONDITIONS 1,2,& 3 (SHEET 1 OF 2)

NTS

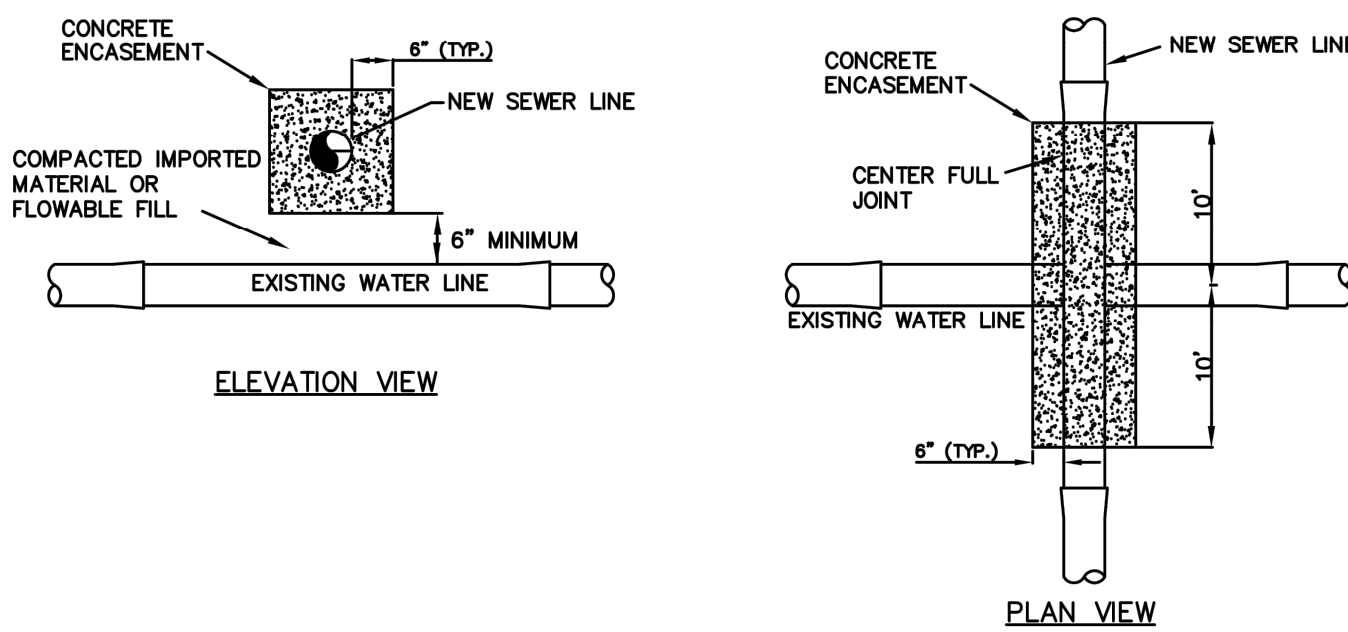
1. Initial Release 11/2008	
REVISION HISTORY:	
	
P.O. Box 880339 3310 Clear Water Trail Steamboat Springs, CO 80488 (970) 879-2424 fax (970) 879-8169	
WATER & SEWER CROSSINGS DETAIL	
DRAWN BY: GLB	DATE: 11/2008
SCALE: NONE	
SHEET: 20	



CONDITION #4: NEW WATER LINE BELOW EXISTING SEWER LINE




CONDITION #5: NEW SEWER LINE LESS THAN 18" BELOW EXISTING WATER LINE



CONDITION #6: NEW SEWER LINE ABOVE EXISTING WATER LINE

CONDITIONS 4,5,& 6 (SHEET 2 OF 2)

NTS

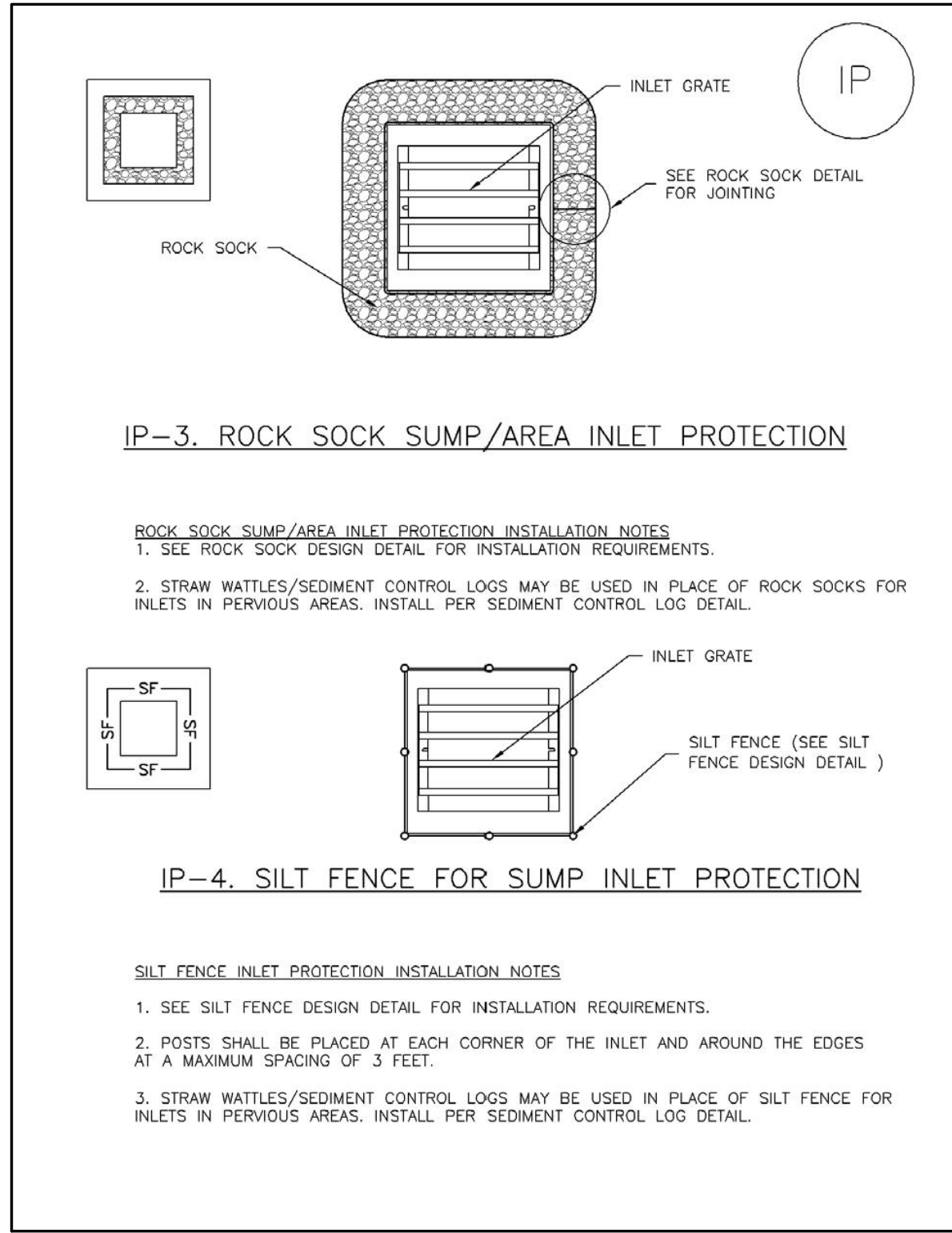
1. Initial Release 11/2008	
REVISION HISTORY:	
	
P.O. Box 880339 3310 Clear Water Trail Steamboat Springs, CO 80488 (970) 879-2424 fax (970) 879-8169	
WATER & SEWER CROSSINGS DETAIL	
DRAWN BY: GLB	DATE: 11/2008
SCALE: NONE	
SHEET: 21	

DESIGNED BY	SMB	DATE	2/29/2024
DRAWN BY	TJM	DATE	5/15/2024
CHECKED BY	MRB	DATE	
REVISION DESCRIPTION			
INITIAL SUBMITTAL FOR CITY REVIEW			
CITY COMMENTS			

C:\020235 Astrid-Edgemont Ph2\Drawings\Construction Documents\20235 DETAILS-CD.dwg, 5/15/2024 2:55:10 PM, Steve Batchelder

Inlet Protection (IP)

SC-6



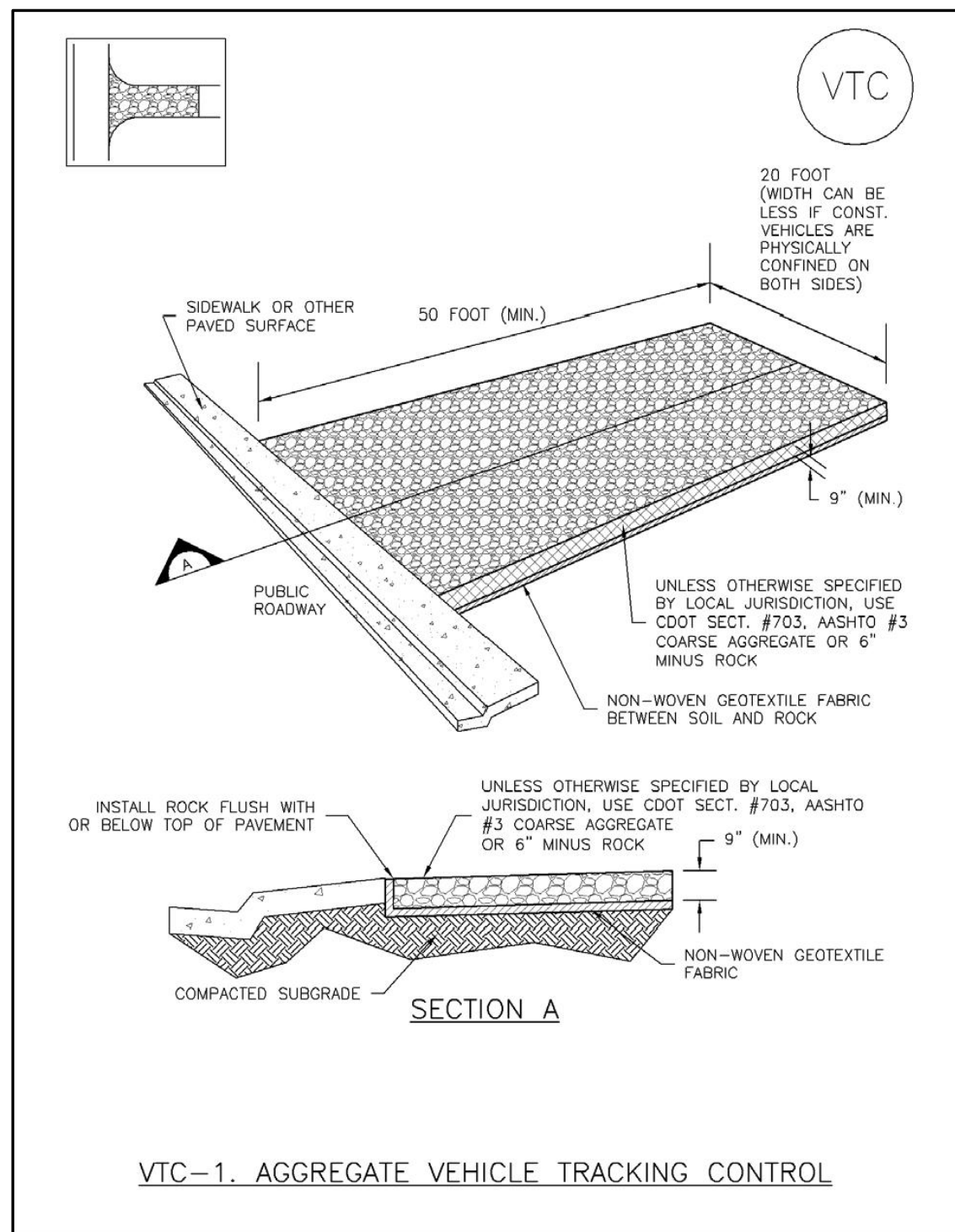
August 2013 Urban Drainage and Flood Control District Urban Storm Drainage Criteria Manual Volume 3 IP-5

1
C58 C58

INLET PROTECTION

Vehicle Tracking Control (VTC)

SM-4



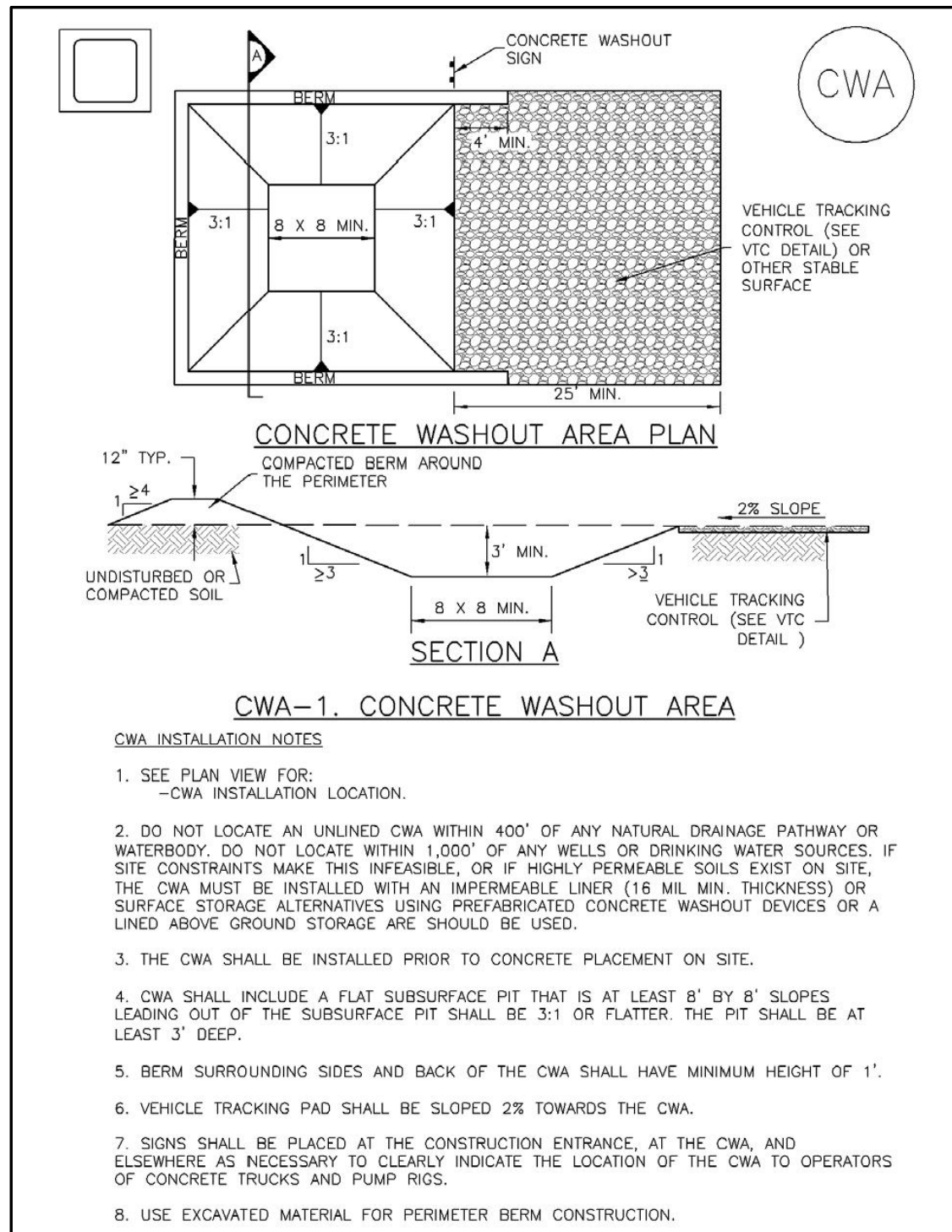
November 2010 Urban Drainage and Flood Control District Urban Storm Drainage Criteria Manual Volume 3 VTC-3

3
C58 C58

VEHICLE TRACKING CONTROL

Concrete Washout Area (CWA)

MM-1



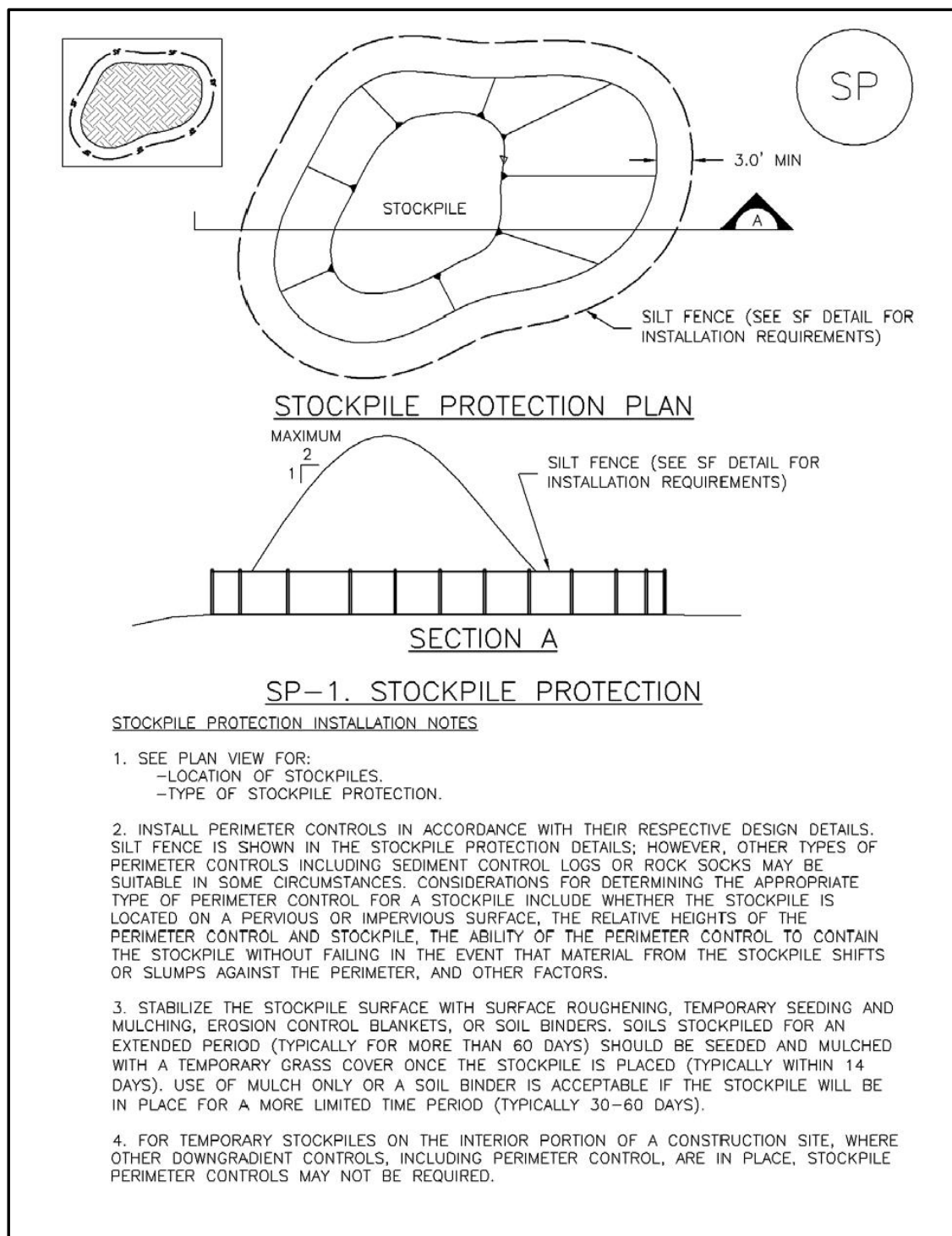
November 2010 Urban Drainage and Flood Control District Urban Storm Drainage Criteria Manual Volume 3 CWA-3

2
C58 C58

CONCRETE WASHOUT AREA

Stockpile Management (SP)

MM-2



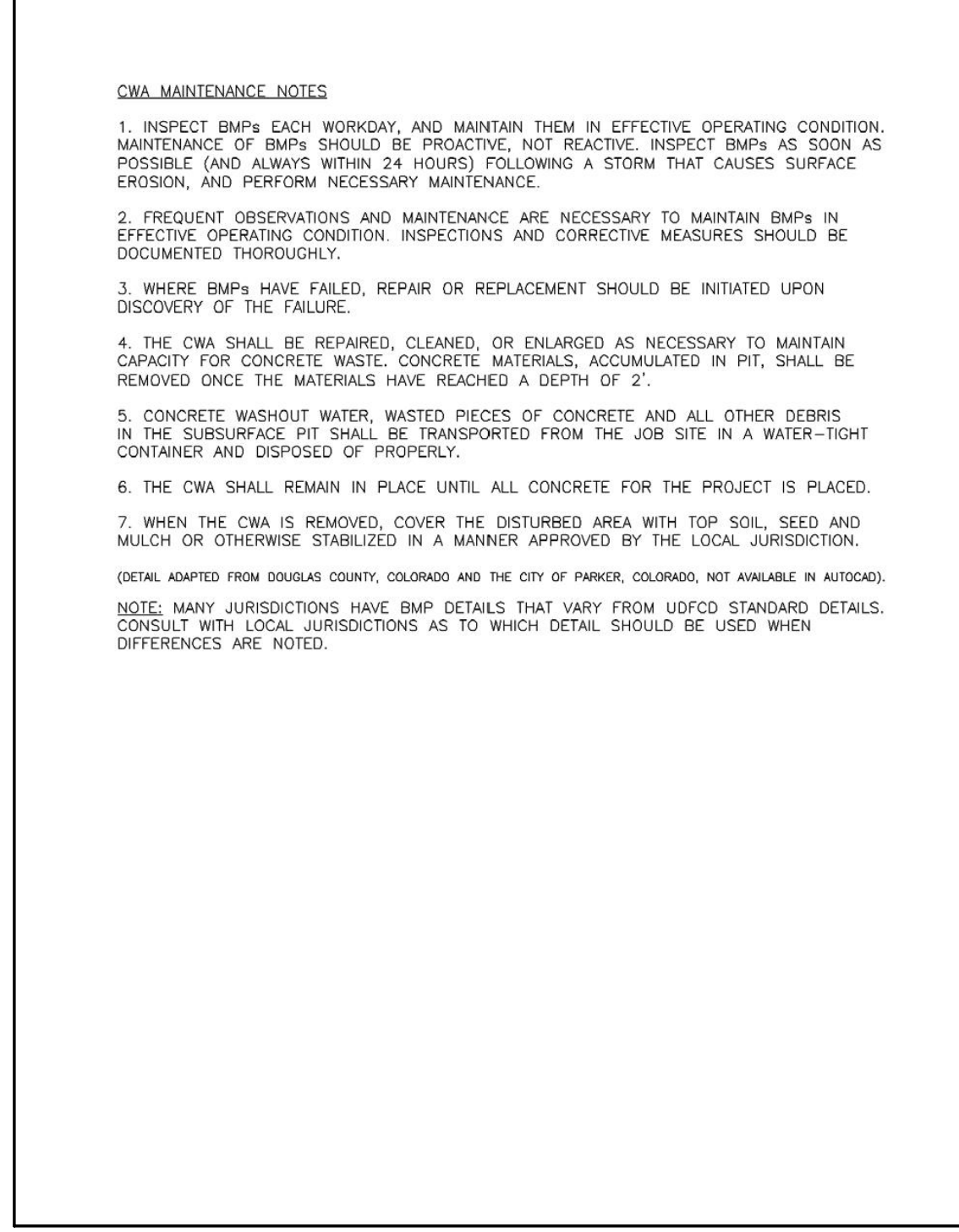
November 2010 Urban Drainage and Flood Control District Urban Storm Drainage Criteria Manual Volume 3 SP-3

4
C58 C58

STOCKPILE PROTECTION

Concrete Washout Area (CWA)

Concrete Washout Area (CWA)



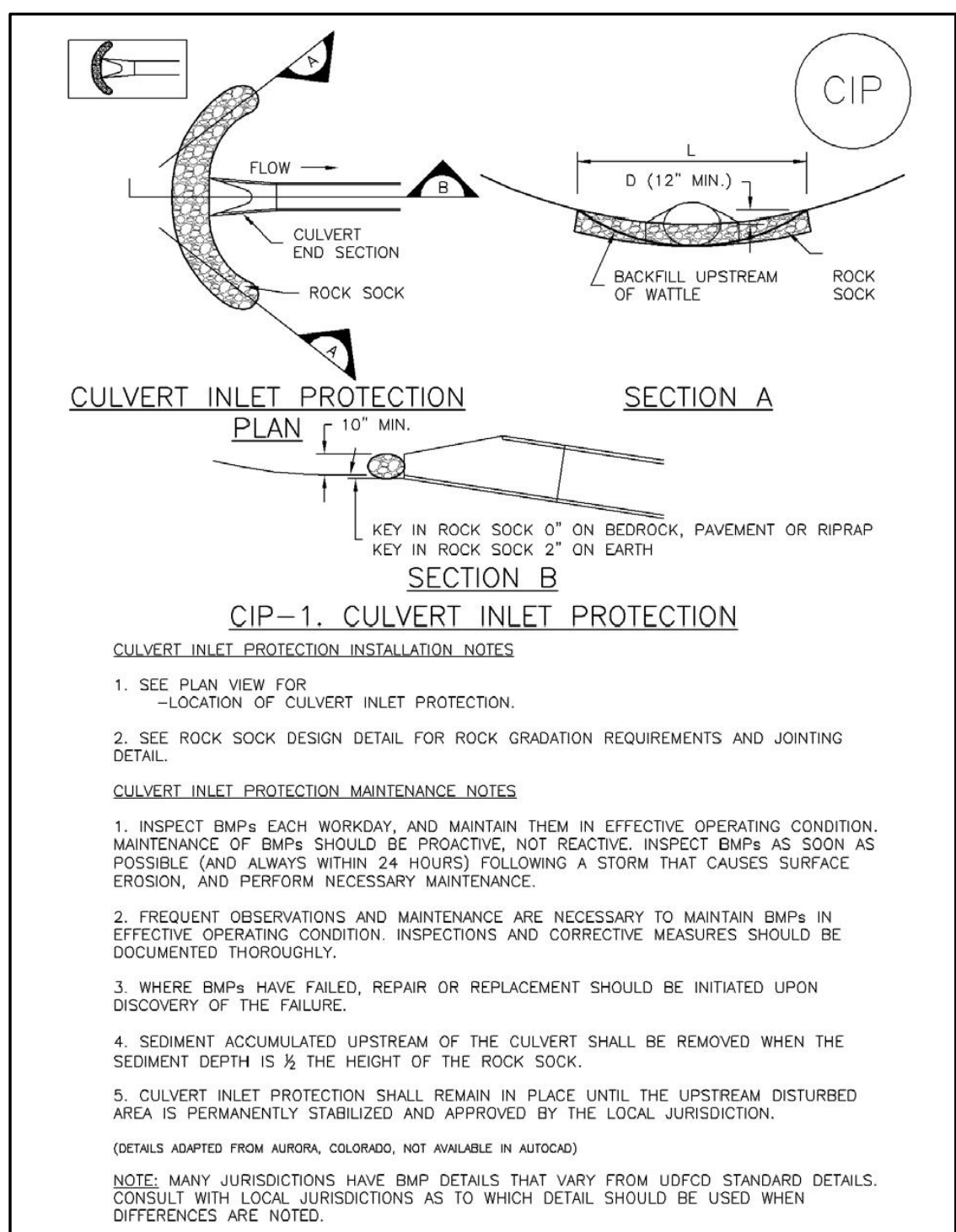
November 2010 Urban Drainage and Flood Control District Urban Storm Drainage Criteria Manual Volume 3 CWA-4

2
C58 C58

CONCRETE WASHOUT AREA

Inlet Protection (IP)

SC-6



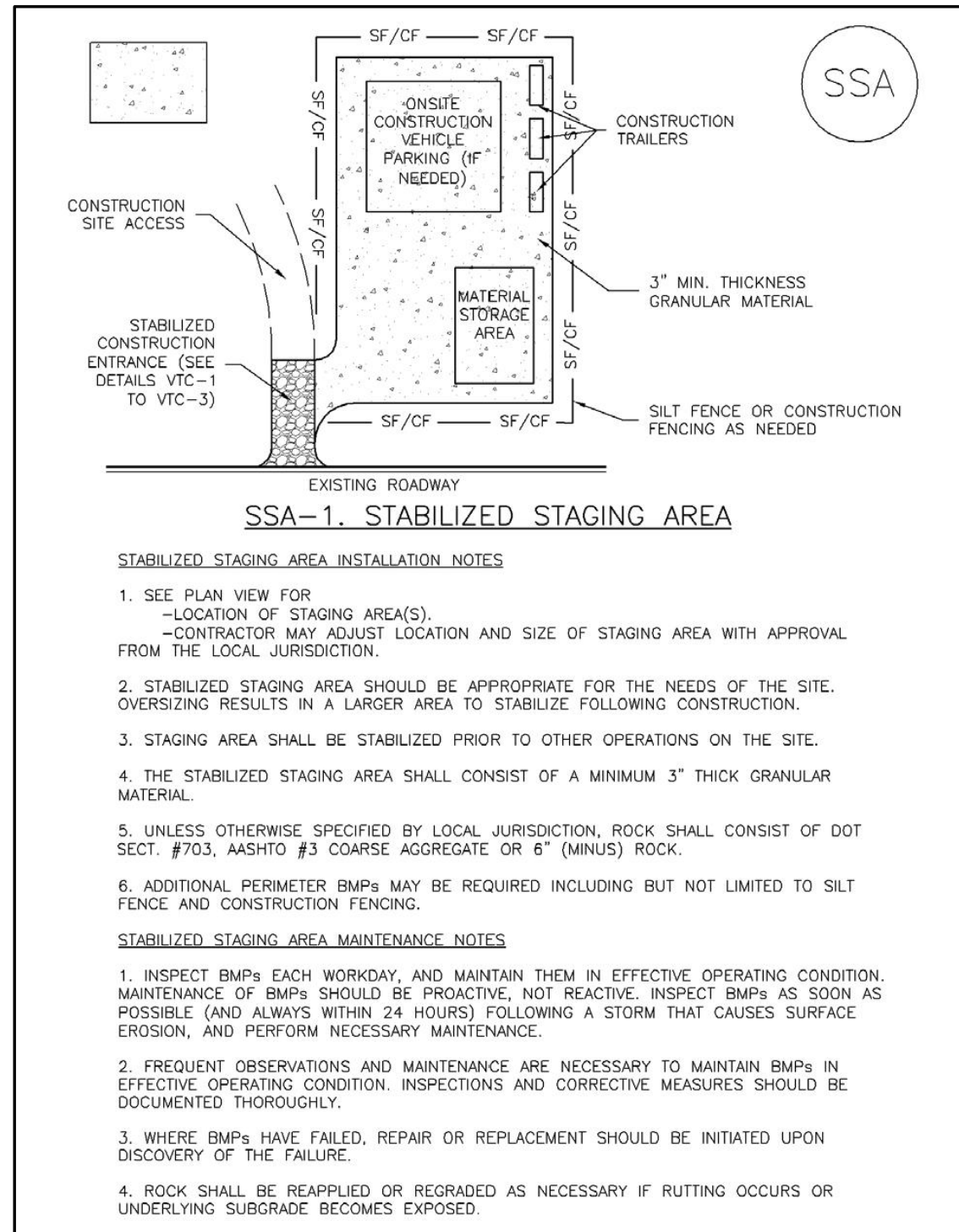
August 2013 Urban Drainage and Flood Control District Urban Storm Drainage Criteria Manual Volume 3 IP-7

5
C58 C58

CULVERT INLET PROTECTION

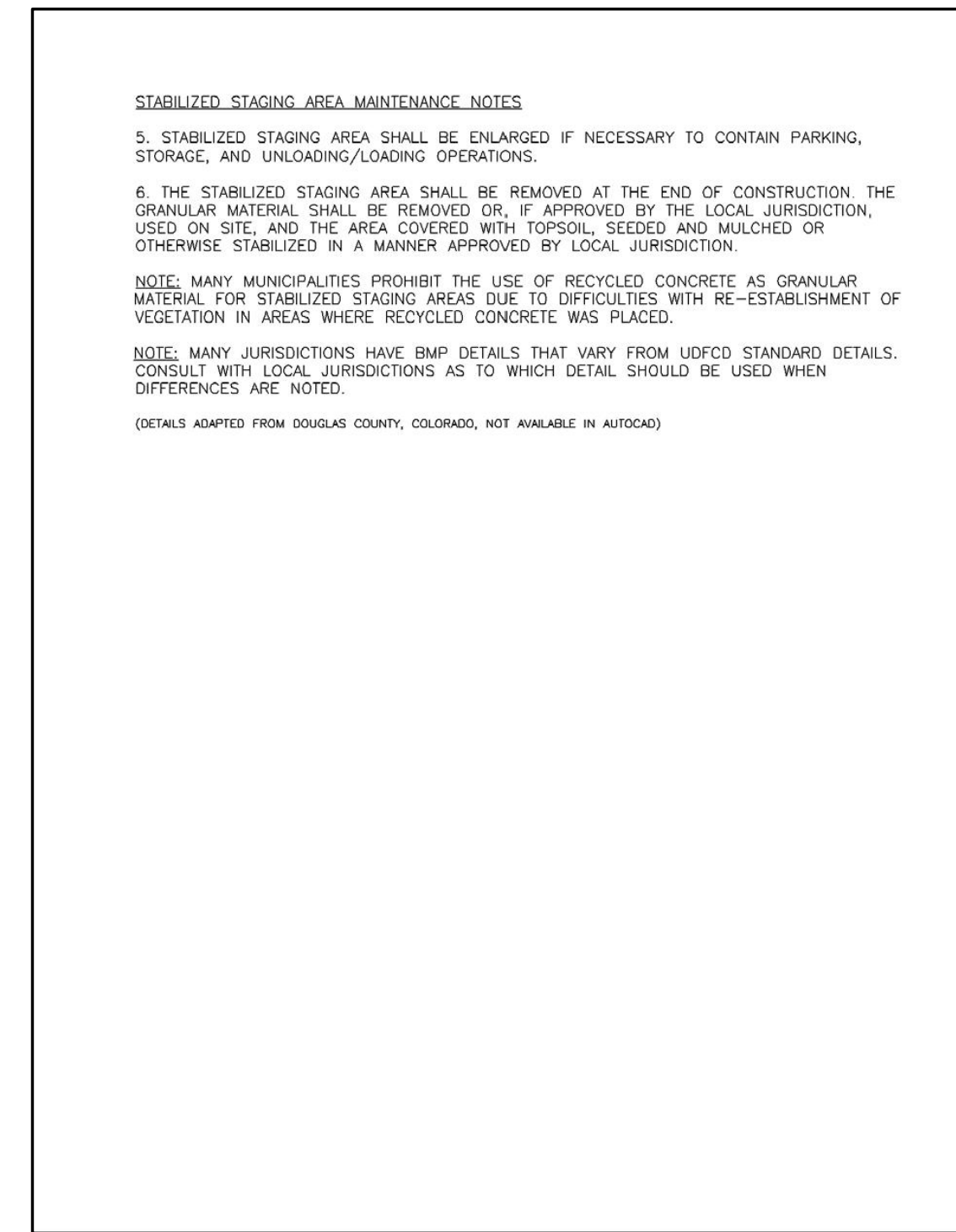
Stabilized Staging Area (SSA)

SM-6



November 2010 Urban Drainage and Flood Control District Urban Storm Drainage Criteria Manual Volume 3 SSA-3

Stabilized Staging Area (SSA)



November 2010 Urban Drainage and Flood Control District Urban Storm Drainage Criteria Manual Volume 3 SSA-4

6
C58 C58

STABILIZED STAGING AREA

BASELINE

Engineering - Planning - Surveying

1669 HILLTOP PKWY, SUITE 204 • STEAMBOAT SPRINGS, CO 80477
P. 970.679.925 • F. 303.340.9659 • www.baselineincopco.com

DESIGNED BY SMB
DRAWN BY TUM
CHECKED BY MRB

DATE 2/29/2024
PREPARED BY SMB

DATE 5/15/2024
PREPARED BY SMB

DATE 5/15/2024
PREPARED BY SMB

DATE 5/15/2024
PREPARED BY SMB

DATE 5/15/2024
PREPARED BY SMB

DATE 5/15/2024
PREPARED BY SMB

DATE 5/15/2024
PREPARED BY SMB

DATE 5/15/2024
PREPARED BY SMB

DATE 5/15/2024
PREPARED BY SMB

DATE 5/15/2024
PREPARED BY SMB

DATE 5/15/2024
PREPARED BY SMB

DATE 5/15/2024
PREPARED BY SMB

DATE 5/15/2024
PREPARED BY SMB

DATE 5/15/2024
PREPARED BY SMB

DATE 5/15/2024
PREPARED BY SMB

DATE 5/15/2024
PREPARED BY SMB

DATE 5/15/2024
PREPARED BY SMB

DATE 5/15/2024
PREPARED BY SMB

DATE 5/15/2024
PREPARED BY SMB

DATE 5/15/2024
PREPARED BY SMB

DATE 5/15/2024
PREPARED BY SMB

DATE 5/15/2024
PREPARED BY SMB

DATE 5/15/2024
PREPARED BY SMB

DATE 5/15/2024
PREPARED BY SMB

DATE 5/15/2024
PREPARED BY SMB

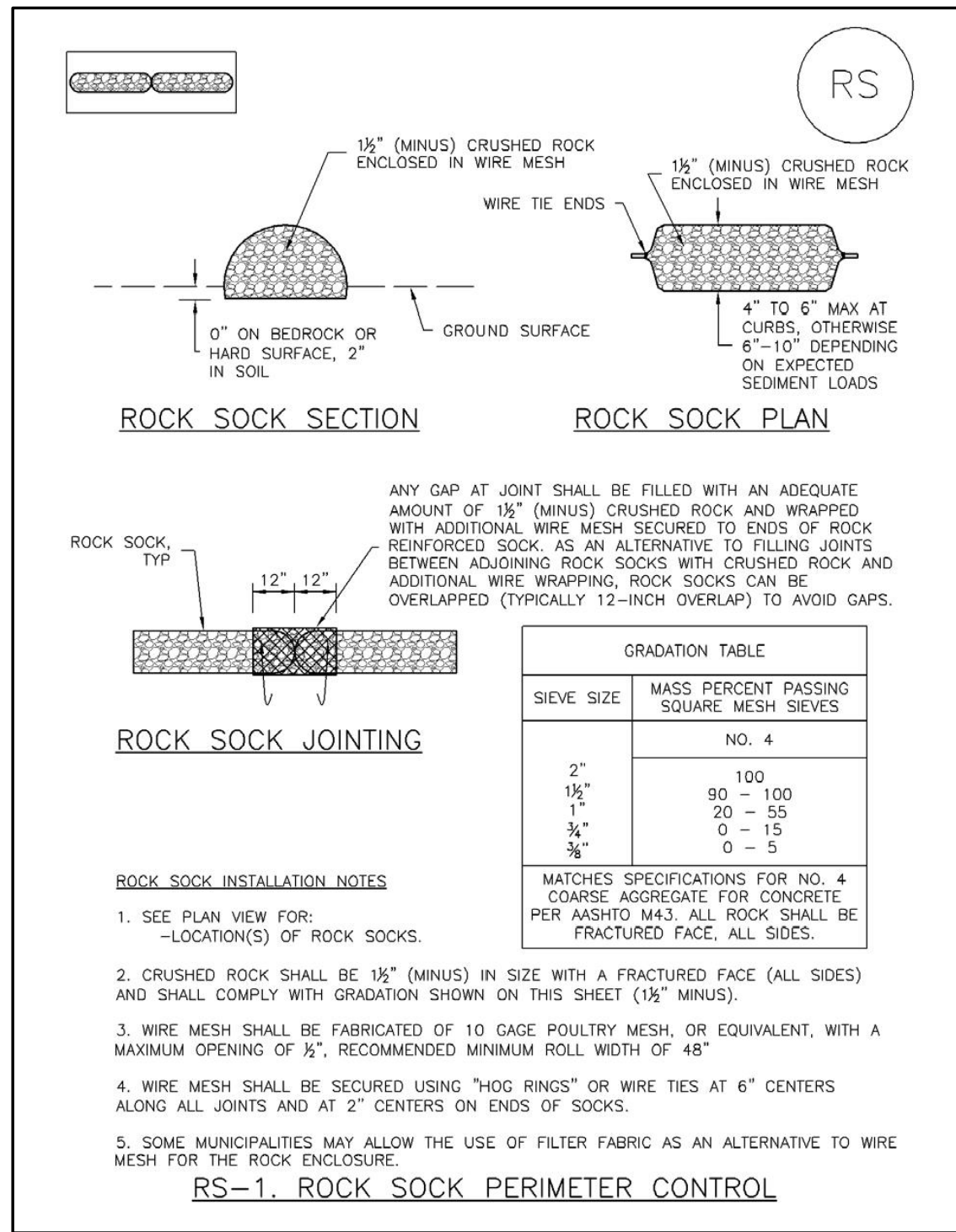
DATE 5/15/2024
PREPARED BY SMB

DATE 5/15/2024
PREPARED BY SMB

DATE 5/15/2024
PREPARED BY SMB

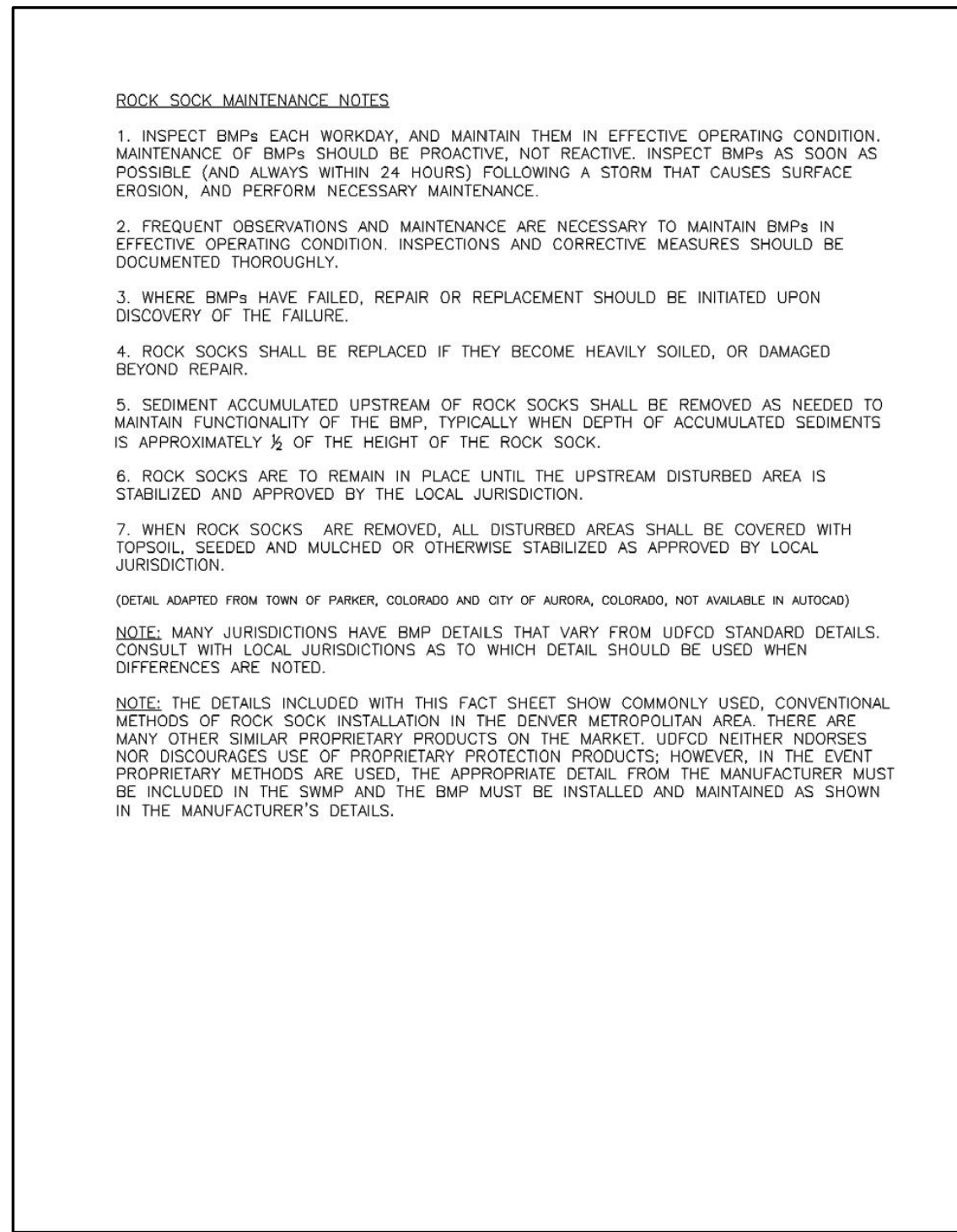
SC-5

Rock Sock (RS)



RS-2 Urban Drainage and Flood Control District Urban Storm Drainage Criteria Manual Volume 3 November 2010

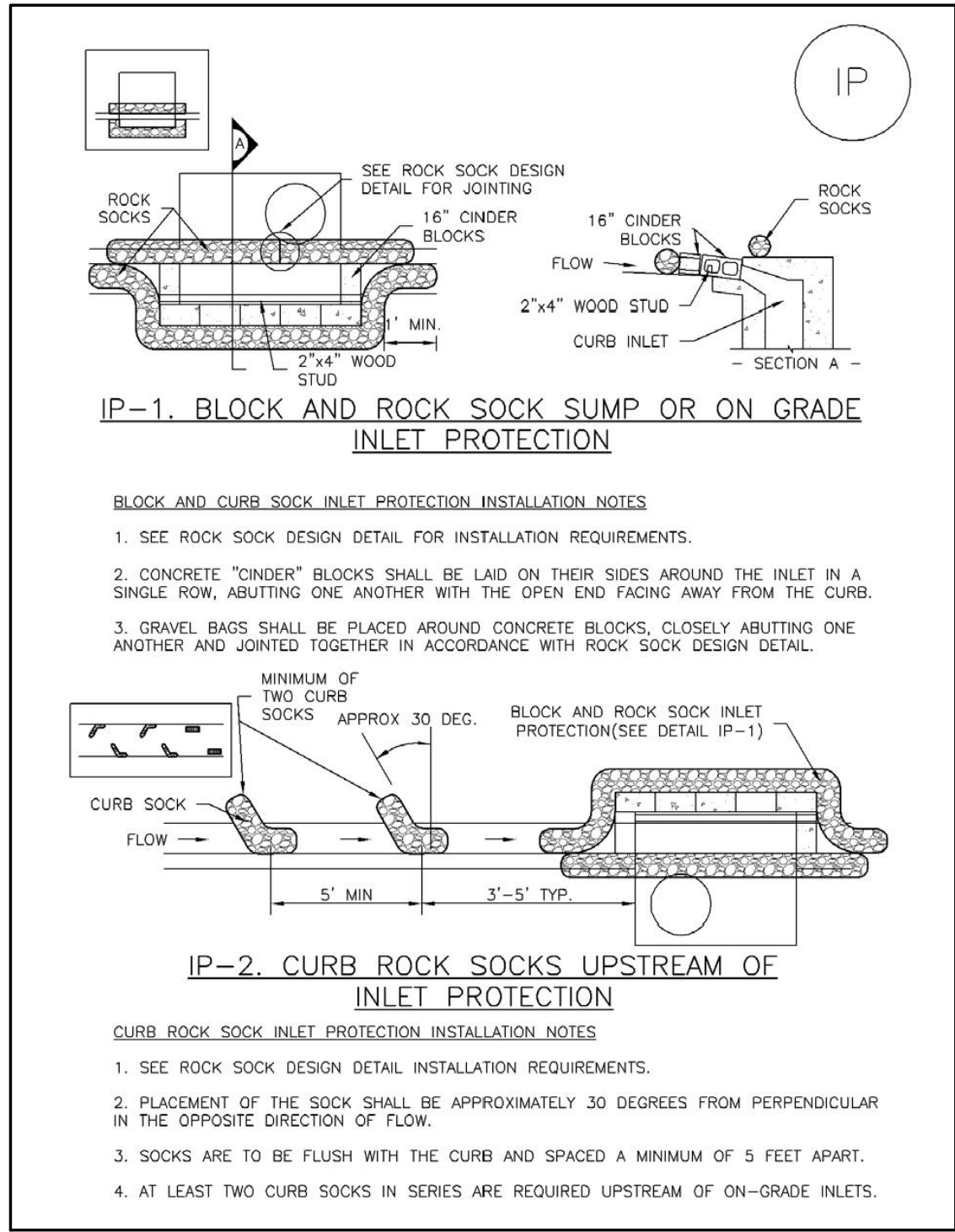
Rock Sock (RS)



November 2010 Urban Drainage and Flood Control District Urban Storm Drainage Criteria Manual Volume 3 RS-3

SC-6

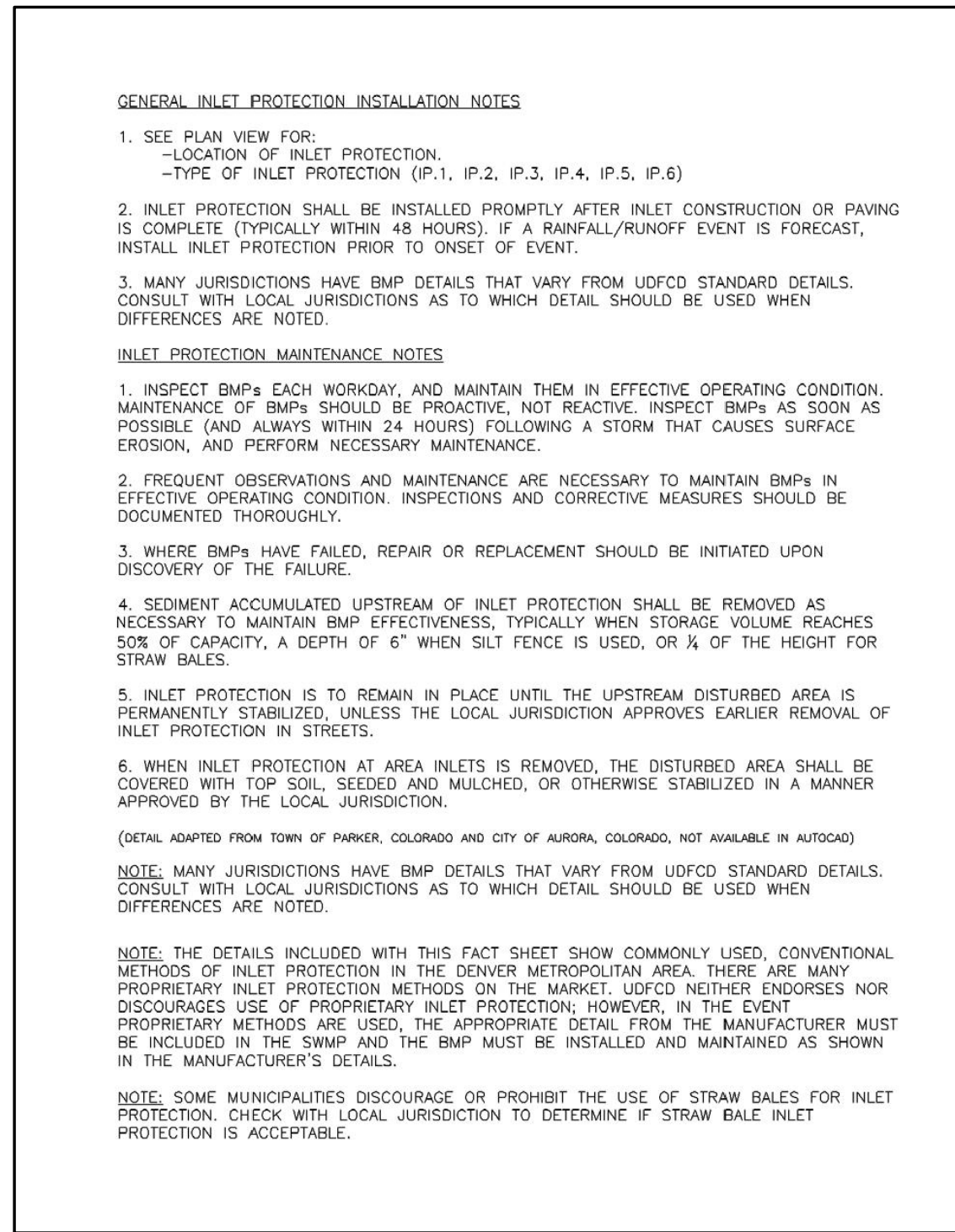
Inlet Protection (IP)



IP-4 Urban Drainage and Flood Control District Urban Storm Drainage Criteria Manual Volume 3 August 2013

SC-6

Inlet Protection (IP)



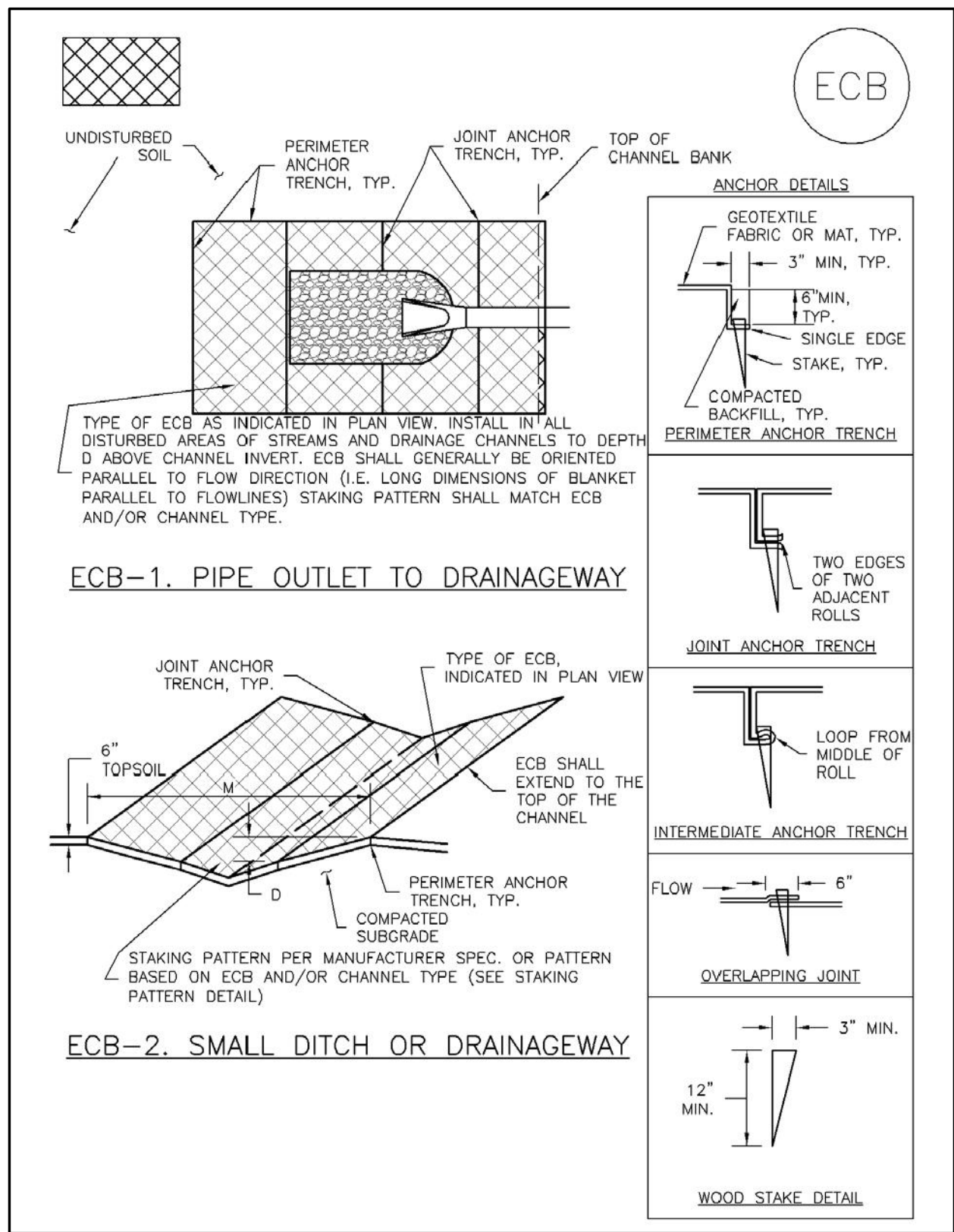
IP-8 Urban Drainage and Flood Control District Urban Storm Drainage Criteria Manual Volume 3 August 2013

7 ROCK SOCK
C59 C59

8 INLET PROTECTION
C59 C59

EC-6

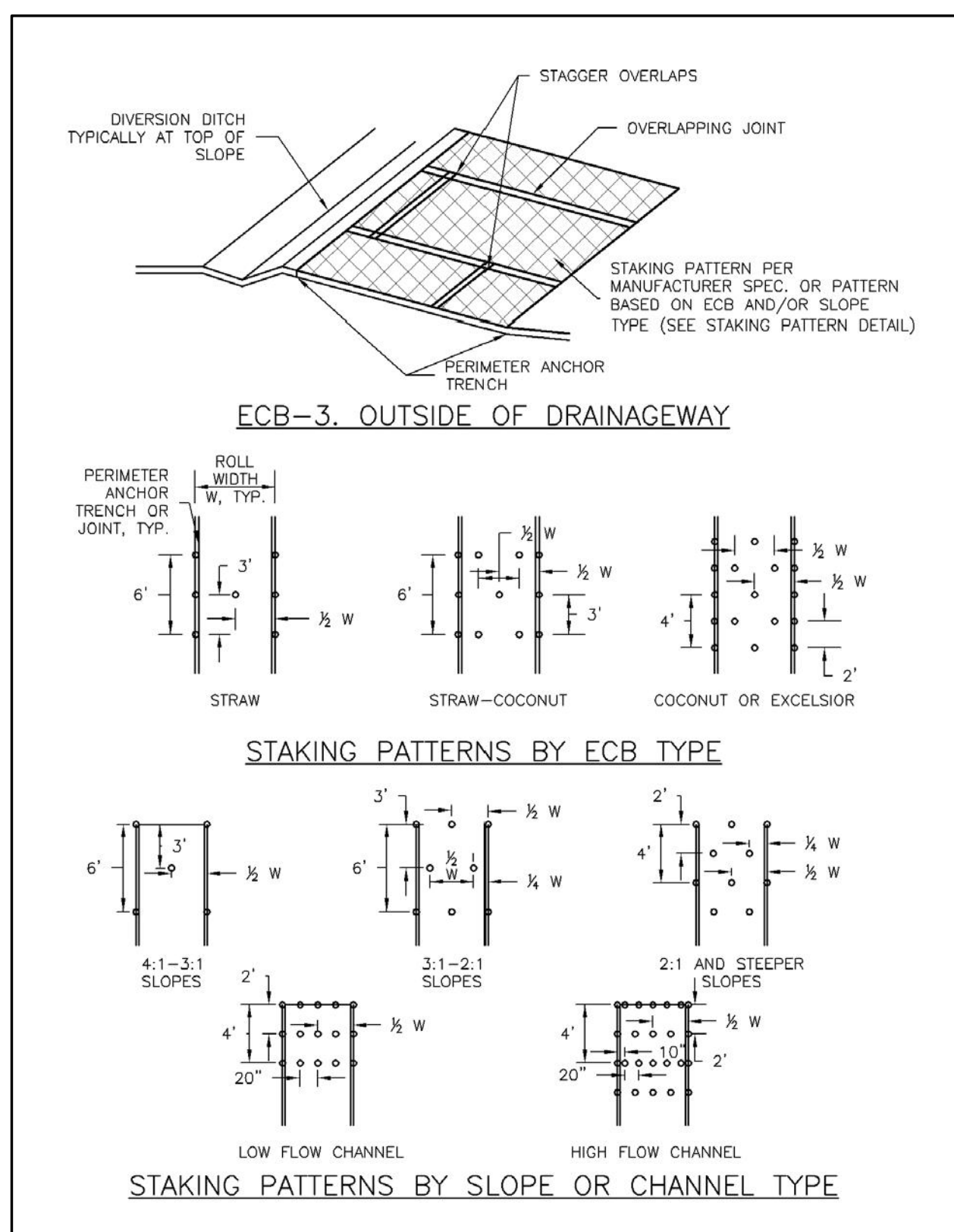
Rolled Erosion Control Products (RECP)



RECP-6 Urban Drainage and Flood Control District Urban Storm Drainage Criteria Manual Volume 3 November 2010

9 ROLLED EROSION CONTROL PRODUCTS
C59 C59

Rolled Erosion Control Products (RECP)



November 2010 Urban Drainage and Flood Control District Urban Storm Drainage Criteria Manual Volume 3 RECP-7

DESIGNED BY SMB
PREPARED BY SMB
DATE 2/29/2024
CITY COMMENTS
REVISION DESCRIPTION
INITIAL SUBMITTAL FOR CITY REVIEW
CITY COMMENTS

2/29/2024
5/15/2024
SMB
SMB

2/29/2024
5/15/2024
SMB
SMB

2/29/2024
5/15/2024
SMB
SMB

2/29/2024
5/15/2024
SMB
SMB

2/29/2024
5/15/2024
SMB
SMB

2/29/2024
5/15/2024
SMB
SMB

2/29/2024
5/15/2024
SMB
SMB

2/29/2024
5/15/2024
SMB
SMB

2/29/2024
5/15/2024
SMB
SMB

2/29/2024
5/15/2024
SMB
SMB

2/29/2024
5/15/2024
SMB
SMB

2/29/2024
5/15/2024
SMB
SMB

2/29/2024
5/15/2024
SMB
SMB

2/29/2024
5/15/2024
SMB
SMB

2/29/2024
5/15/2024
SMB
SMB

2/29/2024
5/15/2024
SMB
SMB

2/29/2024
5/15/2024
SMB
SMB

2/29/2024
5/15/2024
SMB
SMB

2/29/2024
5/15/2024
SMB
SMB