

O:\C020235 Astrid-Edgemont Ph2\Drawings\Construction Documents\20235 Cover.dwg, 5/15/2024 2:22:52 PM, Steve Batchelder

CONSTRUCTION DOCUMENTS THE ASTRID

LOCATED IN SECTION 27, TOWNSHIP 6 NORTH, RANGE 84 WEST
OF THE 6th PRINCIPAL MERIDIAN
CITY OF STEAMBOAT SPRINGS, ROUTT COUNTY, COLORADO

PROJECT CONTACTS



CIVIL ENGINEER:
BASELINE ENGINEERING
MIKE BEURSKENS
(970) 879-1825

CLIENT:
STEAMBOAT ESQUIAR LP



CITY OF STEAMBOAT SPRINGS ENGINEERING DIVISION:
EMRICK SOLTIS
(970) 871-8217



GAS:
ATMOS ENERGY
NATHAN CAMPBELL
(970) 819-0988



ELECTRIC:
YAMPA VALLEY ELECTRIC
LARRY BALL
(970) 879-1160



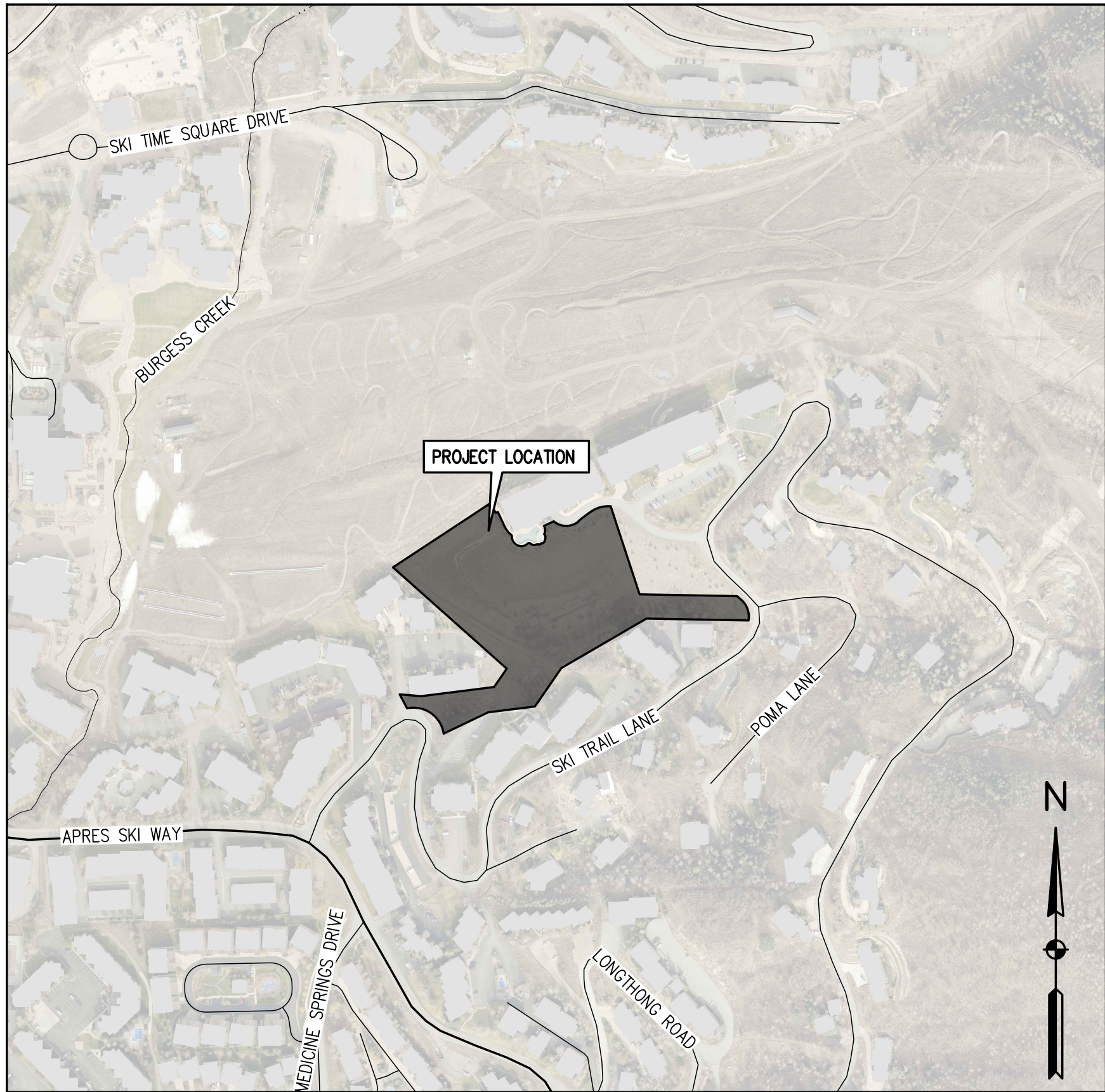
TELEPHONE:
CENTURY LINK
JASON SHARPE
(970) 309-2973



WATER & SANITARY SEWER:
MT. WERNER WATER DISTRICT
FRANK ALFONE
(970) 879-2424



CABLE:
COMCAST
ANDY NEWBY
(970) 997-9004



VICINITY MAP

SCALE: 1" = 300'

BASIS OF BEARINGS

BASIS OF HORIZONTAL CONTROL: NAD83(2011) COLORADO NORTH, SCALED TO GROUND ABOUT A POINT HAVING COORDINATES OF N:1412535.68, E:2636559.05 AND A SCALE FACTOR OF 1.0003690183.
SITE BENCHMARK: A RECOVERED NO.5 REBAR WITH ALUMINUM CAP STAMPED "LS 29039", HAVING AN ELEVATION OF 6986.18' BASED ON THE NORTH AMERICAN VERTICAL DATUM OF 1988 (NAVD88) AS SHOWN HEREON.

INDEX OF SHEETS

SHEET NO.	SHEET TITLE
C1	COVER
C2	NOTES & LEGEND
C3	EXISTING CONDITIONS
C4	PROPOSED AND EXISTING EASEMENT PLAN
C5	DEMOLITION PLAN
C6	TYPICAL SECTION DETAILS
C7	SITE, SIGNAGE, AND STRIPING PLAN
C8	SKI INN CONDOMINIUM IMPROVEMENTS PLAN
C9	SNOW STORAGE PLAN
C10	WALL SCHEDULE
C11	GRADING & DRAINAGE PLANS I
C12	GRADING & DRAINAGE PLANS II
C13	BLDG 1- GRADING DETAIL
C14	BLDG 2 & 3 - GRADING DETAIL
C15	BLDG 5 - GRADING DETAIL
C16	BLDG 6 & POOL- GRADING DETAIL
C17	BLDG 7 - GRADING DETAIL
C18	ENTRANCE WALL - GRADING DETAIL
C19	DETAILED GRADING - CURB RAMP
C20	SITE SECTIONS
C21	GONDOLA LANE DRIVE PLAN & PROFILE I
C22	GONDOLA LANE DRIVE PLAN & PROFILE II
C23	SKI TRL PLAN & PROFILE
C24	EROSION & SEDIMENT CONTROL PLAN - INITIAL & INTERIM
C25	EROSION & SEDIMENT CONTROL PLAN - FINAL
C26	STORM WATER MANAGEMENT PLAN
C27	VEHICLE TRACKING ANALYSIS PLAN
C28	UTILITY PLAN - WATER DISTRIBUTION
C29	UTILITY PLAN - STORM & SANITARY SEWER
C30	UTILITY PLAN - DRY UTILITIES
C31	STORM SEWER MAIN PLAN & PROFILE I
C32	STORM SEWER MAIN PLAN & PROFILE II
C33	STORM SEWER PLAN & PROFILE - LATERALS A & B & C
C34	STORM SEWER PLAN & PROFILE - LATERALS D & E & F
C35	STORM SEWER PLAN & PROFILE - LATERALS G & H & I
C36	STORMWATER POND & OUTLET DETAILS PONDS A & B
C37	STORMWATER POND & OUTLET DETAILS POND C
C38	WATER PLAN & PROFILE I
C39	WATER PLAN & PROFILE II
C40	WATER PLAN & PROFILE III
C41	SANITARY MAIN - PLAN & PROFILE
C42	SANITARY SERVICES - PLAN & PROFILE
C43	CROSS SECTIONS I
C44	CROSS SECTIONS II
C45	CROSS SECTIONS III
C46	CROSS SECTIONS IV
C47	CROSS SECTIONS V
C48	CROSS SECTIONS VI
C49	CROSS SECTIONS VII
C50	SITE DETAILS I
C51	SITE DETAILS II
C52	SITE DETAILS III
C53	MWW DETAILS I
C54	MWW DETAILS II
C55	MWW DETAILS III
C56	MWW DETAILS IV
C57	MWW DETAILS V
C58	EROSION & SEDIMENT CONTROL DETAILS I
C59	EROSION & SEDIMENT CONTROL DETAILS II
LP-1	LANDSCAPE PLAN
LP-2	LANDSCAPE PLAN
LP-3	LANDSCAPE PLAN
LD-1	LANDSCAPE NOTES
LD-2	LANDSCAPE DETAILS



Know what's below.
Call before you dig.



Engineering - Planning - Surveying
1609 HILLTOP PKWY, SUITE 204 • STEAMBOAT SPRINGS, CO 80477
P. 970.679.8225 • F. 303.940.9859 • www.baselinecorp.com

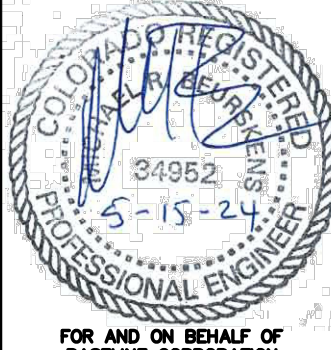
DESIGNED BY	SMB
DRAWN BY	TJM
CHECKED BY	MRB

DATE	2/29/2024
PREPARED BY	SMB
DRAWN BY	SMB

REVISION DESCRIPTION	DATE
INITIAL SUBMITTAL FOR CITY REVIEW	2/29/2024
CITY COMMENTS	5/15/2024

STEAMBOAT ESQUIAR LP	ROUTT COUNTY
CITY OF STEAMBOAT SPRINGS	THE ASTRID
	2410 SKI TRAIL LANE
	COVER

PREPARED UNDER THE DIRECT SUPERVISION OF



FOR AND ON BEHALF OF
BASELINE CORPORATION

INITIAL SUBMITTAL 2/29/2024

DRAWING SIZE 24" X 36"

SURVEY FIRM LANDMARK, INC SURVEY DATE 06/03/22

JOB NO. C020235

DRAWING NAME COVER

SHEET 1 OF 64

C1