

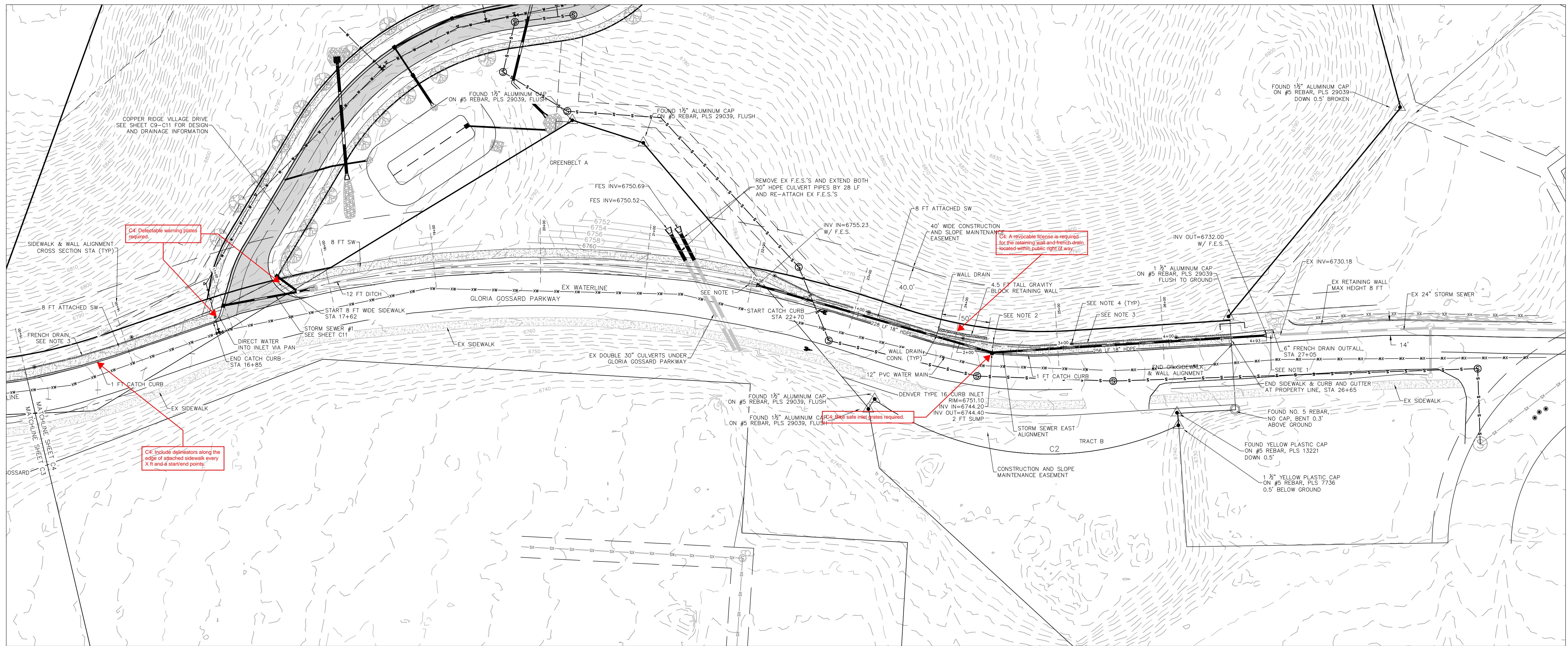
NO.	DATE	REVISIONS

**STEAMBOAT AIRPARK SUBDIVISION
CONSTRUCTION DRAWINGS**
**GLORIA GOSSARD PARKWAY
STEAMBOAT SPRINGS, CO 80487**

Horizontal Scale
1" = 50'
Contour Interval = 2 ft
DATE: 12-1-2023
JOB #: 1670-001
DRAWN BY: MDM
DESIGN BY: MDM
REVIEW BY: WNM

DRAWING:
**SIDEWALK & STORM
SEWER PLAN #2**

SHEET #
C4



- NOTES**
1. PRIOR TO ANY CONSTRUCTION, A SLOPE STABILITY PLAN IS REQUIRED BY A GEOTECHNICAL ENGINEER FOR ALL SLOPES IMPACTED BY THE CONSTRUCTION OF THE SIDEWALK ON THE NORTH SIDE OF GLORIA GOSSARD PARKWAY.
 2. EROSION PROTECTION SHALL BE INSTALLED AT ALL STORMWATER PIPE OUTFALLS PER THE DETAIL ON SHEET C7.
 3. INSTALL PERVIOUS SIDEWALK SHOULDER FRENCH DRAIN PER DETAIL ON SHEET C8.
 4. INSTALL 6" 2-WAY CLEANOUT FOR PERVIOUS SIDEWALK SHOULDER FRENCH DRAIN PER DETAIL ON SHEET C8. 2-WAY CLEANOUTS SHALL BE INSTALLED EVERY 100 FEET.
 5. INSTALL A 6" PVC 2-WAY CLEANOUT FOR THE PERFORATED PVC WALL DRAIN.
 6. SEE SHEETS C12 AND C13 FOR GLORIA GOSSARD CONSTRUCTION INFORMATION.

