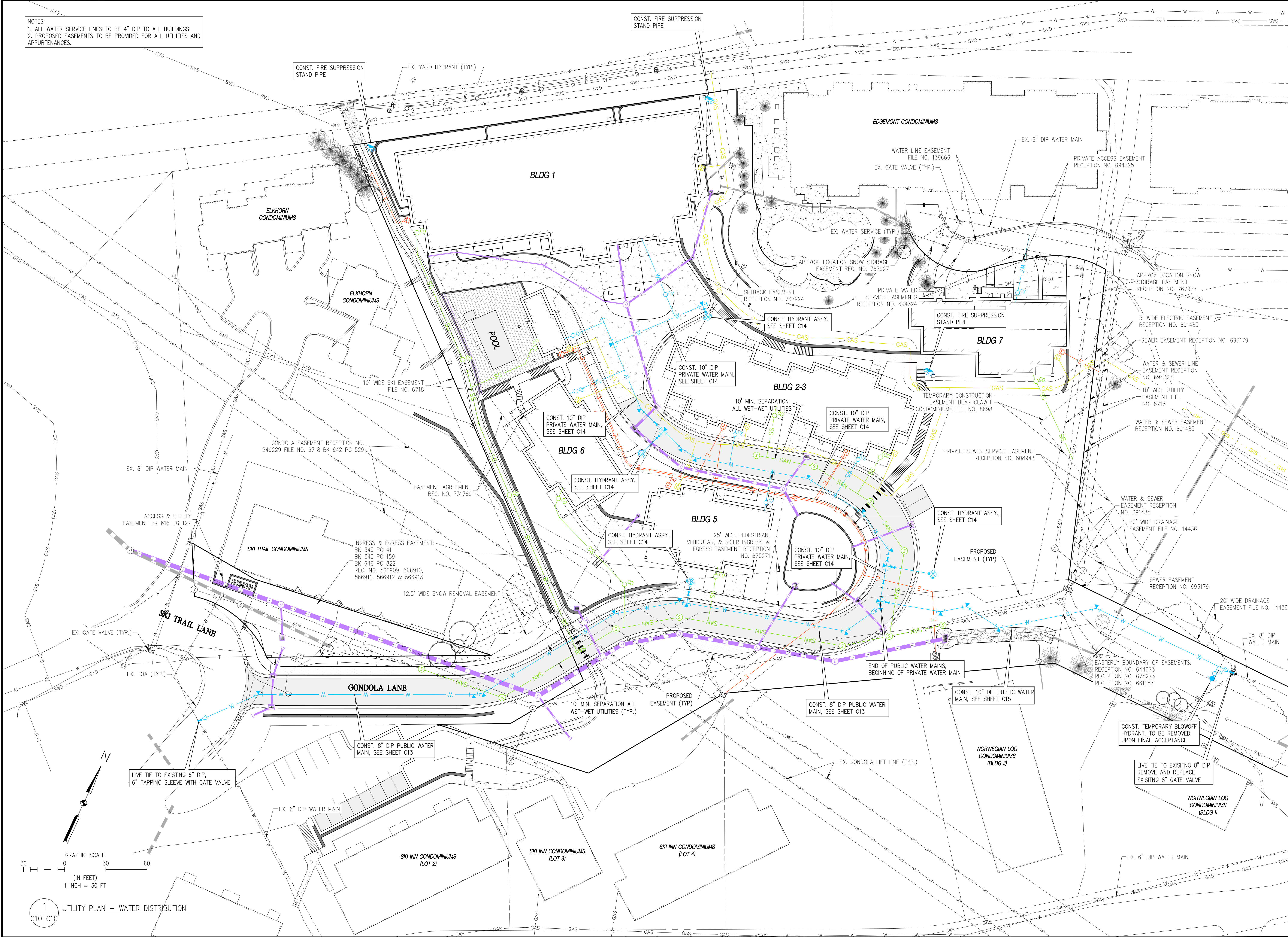


c:\co20235 astrid-edgemont ph2\Drawings\CONCEPT\20235 UTILITY PLAN - WATER.dwg, 5/19/2023 1:08:57 PM, Steve Batchelder



BASELINE

Engineering • Planning • Surveying

169 HILLTOP PKWY, SUITE 204 • STEAMBOAT SPRINGS, CO 80477
P. 970.679.825 • F. 303.940.9659 • www.baselineinc.com

DESIGNED BY	TJM	DATE	05/18/2023
PREPARED BY	SMB	COMMENTS	
DRAWN BY	TJM		
CHECKED BY	MRB		

REVISION	DESCRIPTION
1	REVISIONS PER ART #1 COMMENTS

STEAMBOAT ESQUIAR LP

THE ASTRID
2410 SKI TRAIL LANE
UTILITY PLAN - WATER DISTRIBUTION

ROUTT COUNTY

FOR AND ON BEHALF OF
BASELINE CORPORATION

INITIAL SUBMITTAL 12/22/2022

DRAWING SIZE 24" X 36"

SURVEY FIRM LANDMARK, INC SURVEY DATE 06/03/22

JOB NO. C020235

DRAWING NAME 20235 UTILITY PLAN - WATER.dwg

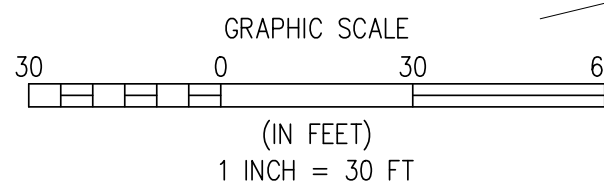
SHEET 12 OF 68

PRELIMINARY
NOT FOR
CONSTRUCTION

C10

c:\co20235 astrid-edgemont ph2\Drawings\CONCEPT\20235 UTILITY PLAN - SEWER.dwg, 5/19/2023 1:10:25 PM, Steve Batchelder

- NOTES:
1. SANITARY SEWER MAIN PIPE TO BE 8" PVC.
 2. SANITARY SEWER SERVICE PIPE TO BE 4" PVC UNLESS NOTED OTHERWISE.
 3. ELECTRIC AND GAS ARE SHOWN SCHEMATICALLY. TELE. AND TV LAYOUTS TO BE DETERMINED.
 4. PROPOSED EASEMENTS TO BE PROVIDED FOR ALL UTILITIES AND DRAINAGE STRUCTURES



1
C11/C11

UTILITY PLAN - STORM & SANITARY SEWER

(2) EX. 12" CPP
INV. IN = 7038.24
INV. IN = 7038.28
INV. OUT = 7036.82
INV. OUT = 7036.97

EX. 12" CPP
INV. OUT = 7031.47

EX. SAN MH
RIM = 7058.54
INV. IN (NE) = 7052.84
INV. OUT (S) = 7052.79

EX. SAN MH
RIM = 7068.29
INV. IN (E) = 7051.52
12" PVC CAP (SE) = 7059.23
INV. IN (W) = 7051.78
INV. OUT (S) = 7051.25

EX. SAN MH
RIM = 7072.98
INV. IN (N) = 7061.66
INV. IN (E) = 7061.61
INV. OUT (W) = 7061.43

EX. 24" RCP
INV. IN = ?????
INV. OUT = 7023.17

EX. SAN MH
RIM = 7017.82
INV. IN (N) = 7013.80
INV. OUT (E) = 7013.74

EX. SAN MH
RIM = 7018.61
INV. IN (N) = 7007.56
INV. IN (E) = 7008.36
INV. OUT (SW) = 7007.42

EX. SAN MH
RIM = 7023.74
INV. IN (W) = 7010.29
INV. OUT (S) = 7010.09

EX. 15" CMP
INV. IN = 7018.16
INV. OUT = 7015.38

EX. SAN MH
RIM = 7026.60
INV. IN (E) = 7017.85
INV. OUT (W) = 7017.59

BLDG 1

EDGEMONT CONDOMINIUMS

BLDG 7

BLDG 2-3

BLDG 6

BLDG 5

ELKHORN CONDOMINIUMS

ELKHORN CONDOMINIUMS

SKI TRAIL CONDOMINIUMS

SKI INN CONDOMINIUMS (LOT 2)

SKI INN CONDOMINIUMS (LOT 3)

SKI INN CONDOMINIUMS (LOT 4)

BASELINE

Engineering - Planning - Surveying

169 HILLTOP PKWY, SUITE 204 • STEAMBOAT SPRINGS, CO 80477
P. 970.679.825 • F. 303.940.9569 • www.baselinepp.com

DESIGNED BY
TJM

DRAWN BY
TJM

CHECKED BY
MRB

DATE

05/18/2023

PREPARED BY

SMG

REVISION DESCRIPTION

REVISIONS PER DWT # COMMENTS

ROUTE COUNTY

STEAMBOAT ESQUIAR LP

THE ASTRID

2410 SKI TRAIL LANE

UTILITY PLAN - STORM & SANITARY SEWER

STEAMBOAT SPRINGS

PREPARED UNDER THE DIRECT SUPERVISION OF

**PRELIMINARY
NOT FOR
CONSTRUCTION**

FOR AND ON BEHALF OF
BASELINE CORPORATION

INITIAL SUBMITTAL 12/22/2022

DRAWING SIZE 24" X 36"

SURVEY FIRM SURVEY DATE
LANDMARK, INC 06/03/22

JOB NO. C020235

DRAWING NAME
20235 UTILITY PLAN - SEWER.dwg

SHEET 13 OF 68

C11

GRAPHIC SCALE

0 30 60

(IN FEET)

1 INCH = 30 FT

BASILINE
Engineering • Planning • Surveying

1659 HILLTOP PKWY, SUITE 204 • STEAMBOAT SPRINGS, CO 80477
P. 970.879.9235 • F. 303.940.9959 • www.basilinecorp.com

PREPARED BY	DATE
SMB	05/18/2022

REVISION DESCRIPTION
REVISIONS PER DRT #1 COMMENTS

THE ASTRID
2410 SKI TRAIL LANE
UTILITY PLAN - DRY UTILITIES

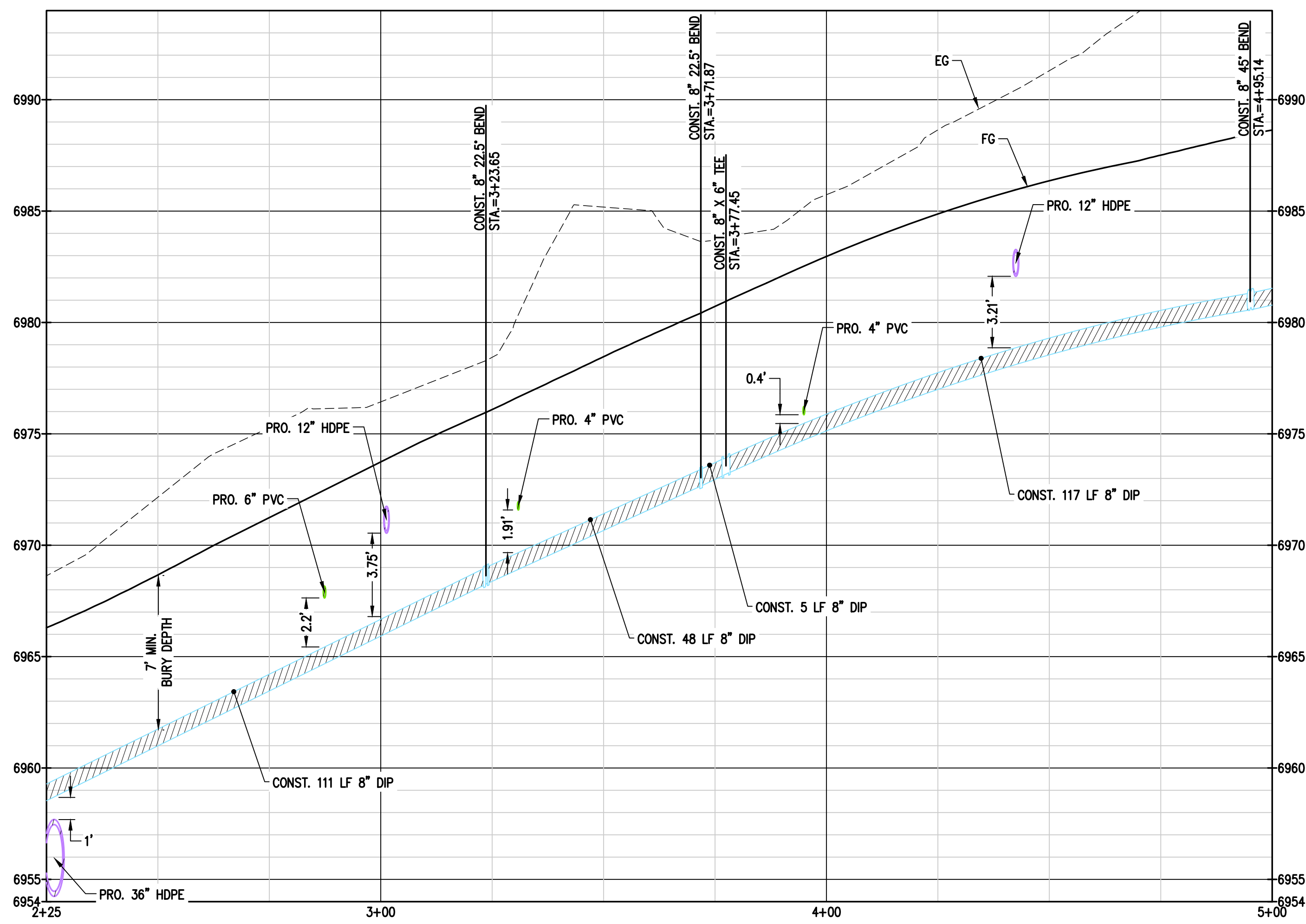
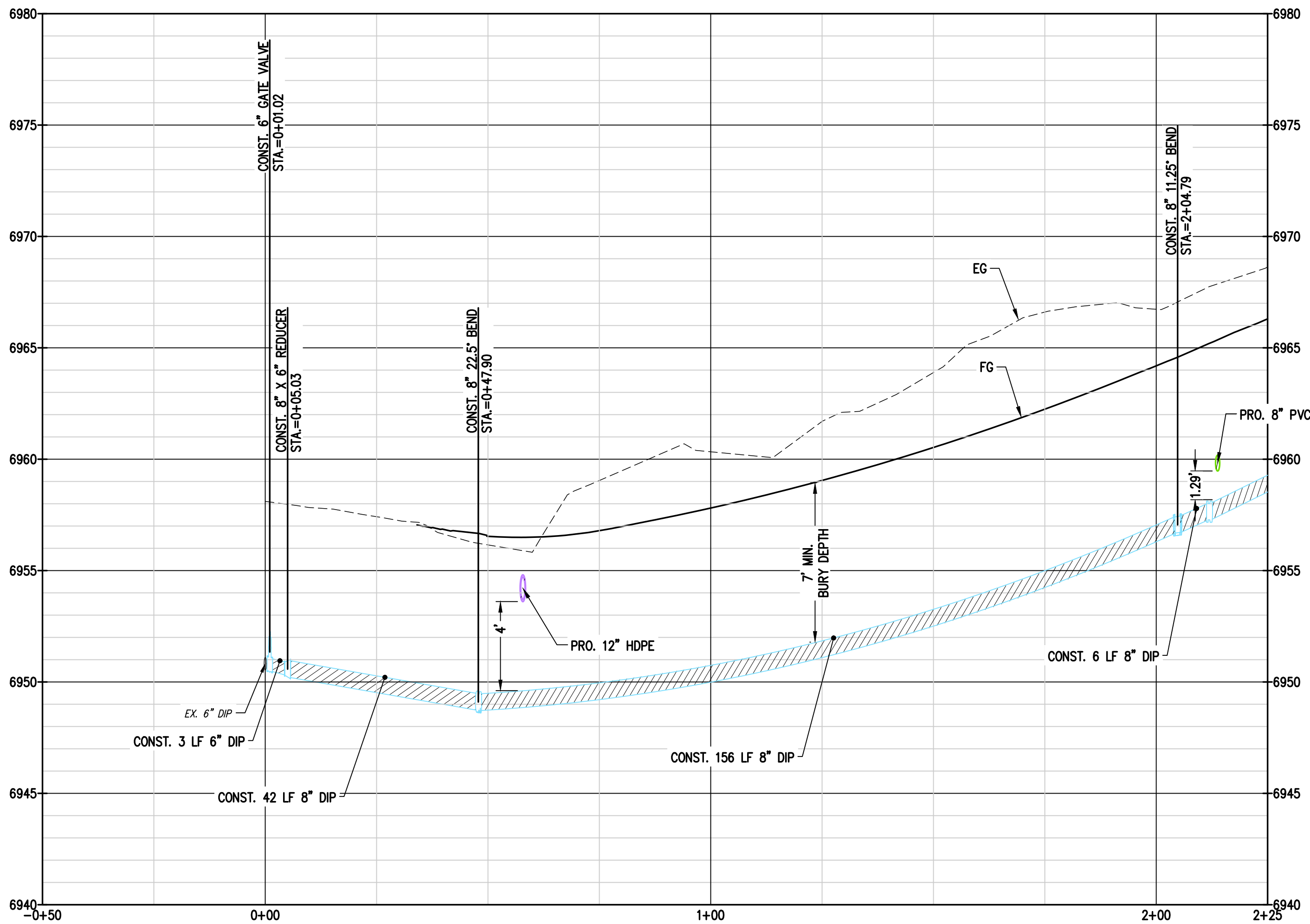
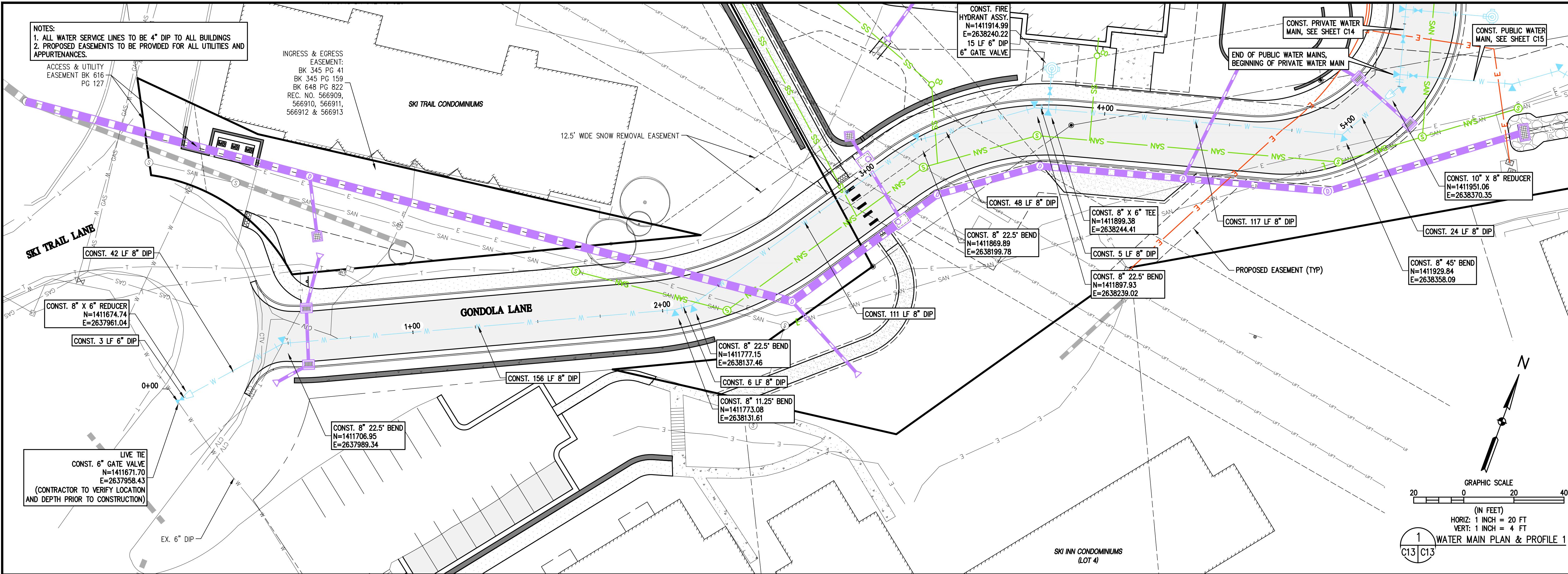
STEAMBOAT SPRINGS	
PREPARED UNDER THE DIRECT SUPERVISION OF	

**PRELIMINARY
NOT FOR
CONSTRUCTION**

BASILINE CORPORATION	
INITIAL SUBMITTAL	12/22/2022
DRAWING SIZE	24" x 36"
SURVEY FIRM	SURVEY DATE
LANDMARK, INC	06/03/22
JOB NO.	C020235
DRAWING NAME	
20235 UTILITY PLAN - DRY.dwg	
SHEET	14 OF 68

C12

c:\co20235 astrid-edgemont ph2\Drawings\CONCEPT\20235 P&P-WATER PLAN.dwg, 5/19/2023 1:13:43 PM, Steve Batchelder



BASELINE
Engineering - Planning - Surveying

169 HILLTOP PKWY, SUITE 204 • STEAMBOAT SPRINGS, CO 80477
P. 970787825 • F. 303340969 • www.baselinecorp.com

DESIGNED BY	TJM	DATE	05/18/2023
DRAWN BY	TJM	PREPARED BY	SMG
CHECKED BY	MRB	REVISION DESCRIPTION	

REVISIONS PER ART #1 COMMENTS

STEAMBOAT ESQUIAR LP

THE ASTRID
2410 SKI TRAIL LANE
WATER MAIN PLAN & PROFILE 1

STEAMBOAT SPRINGS

ROUTT COUNTY

PREPARED UNDER THE DIRECT SUPERVISION OF

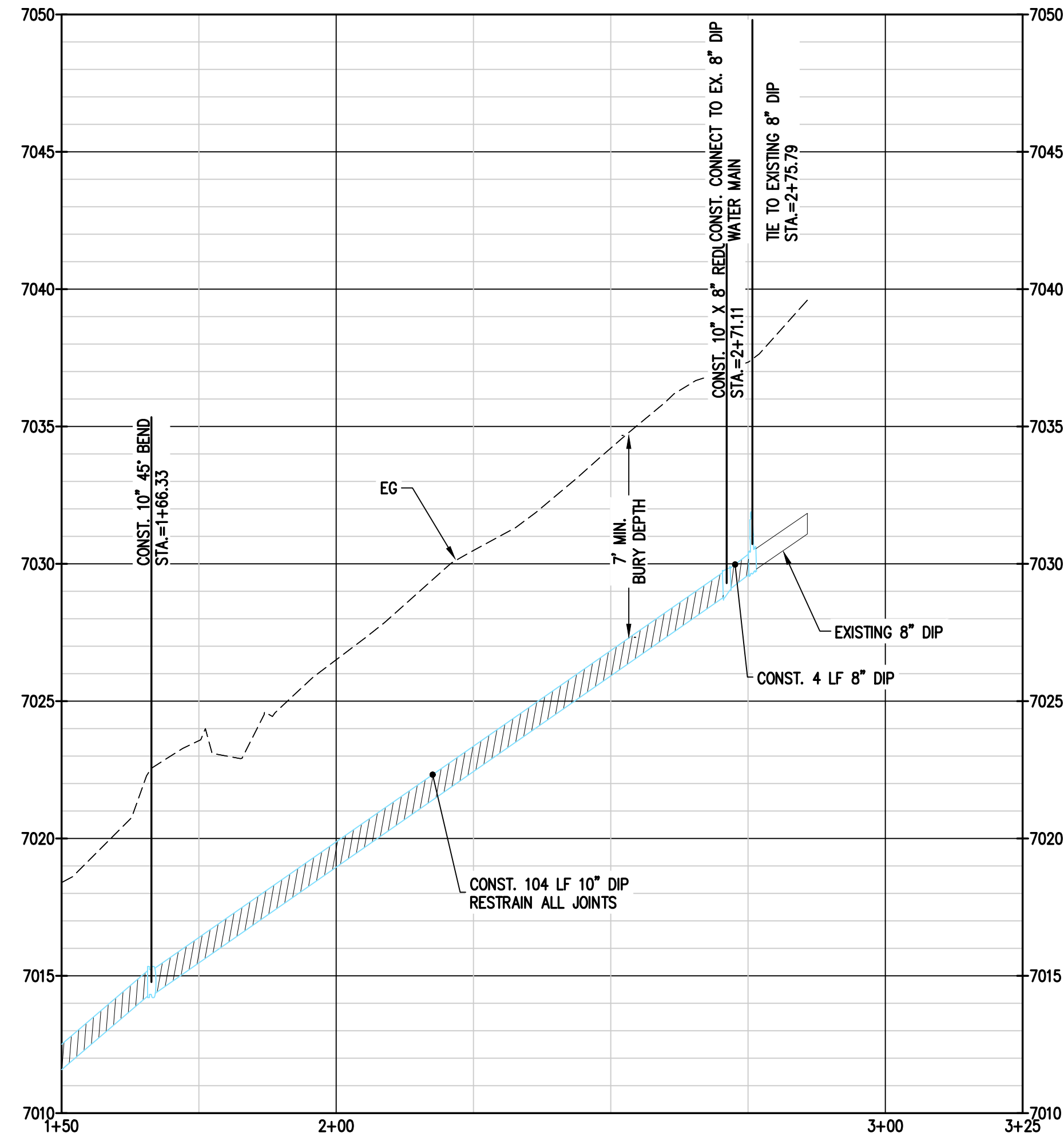
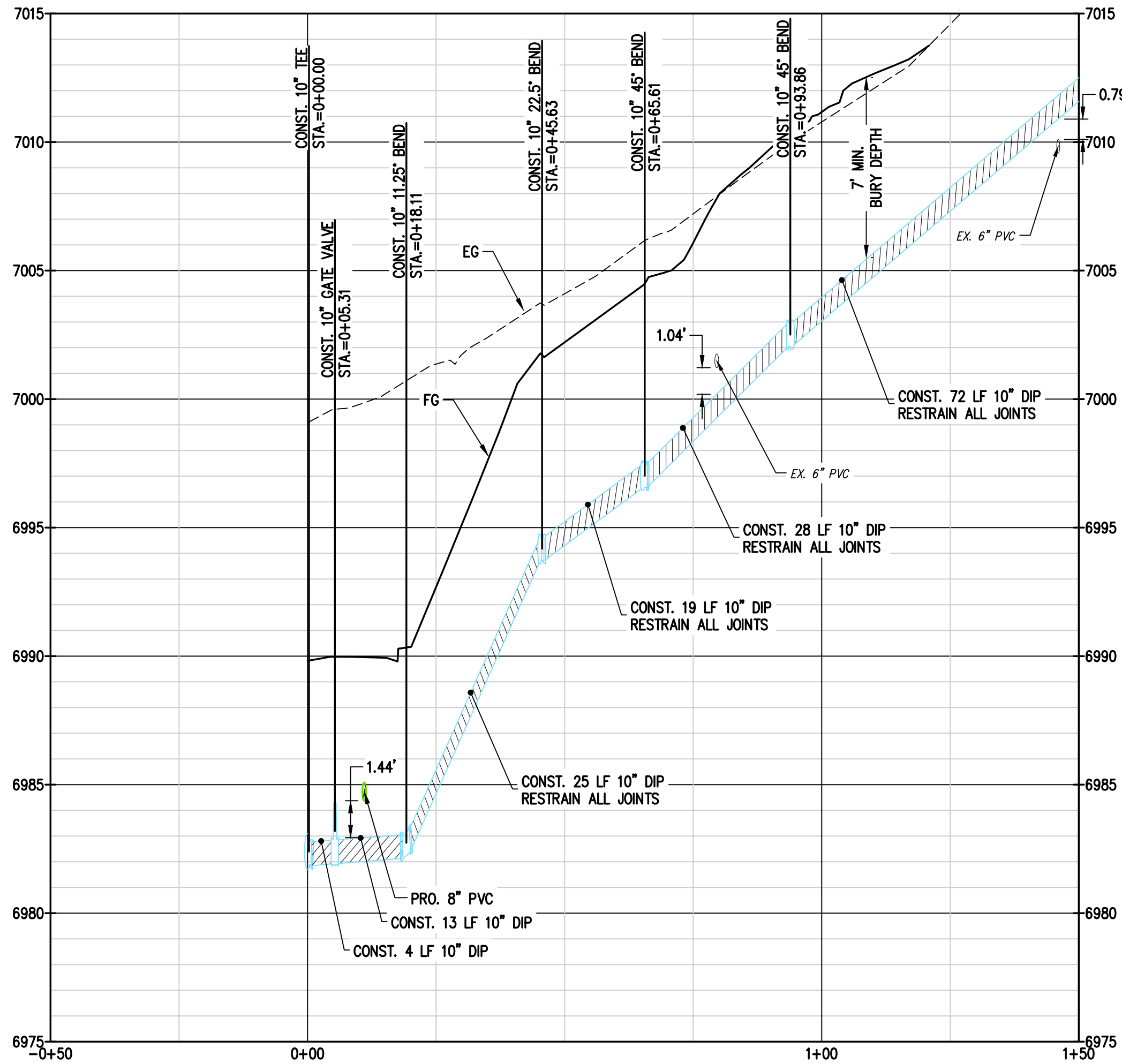
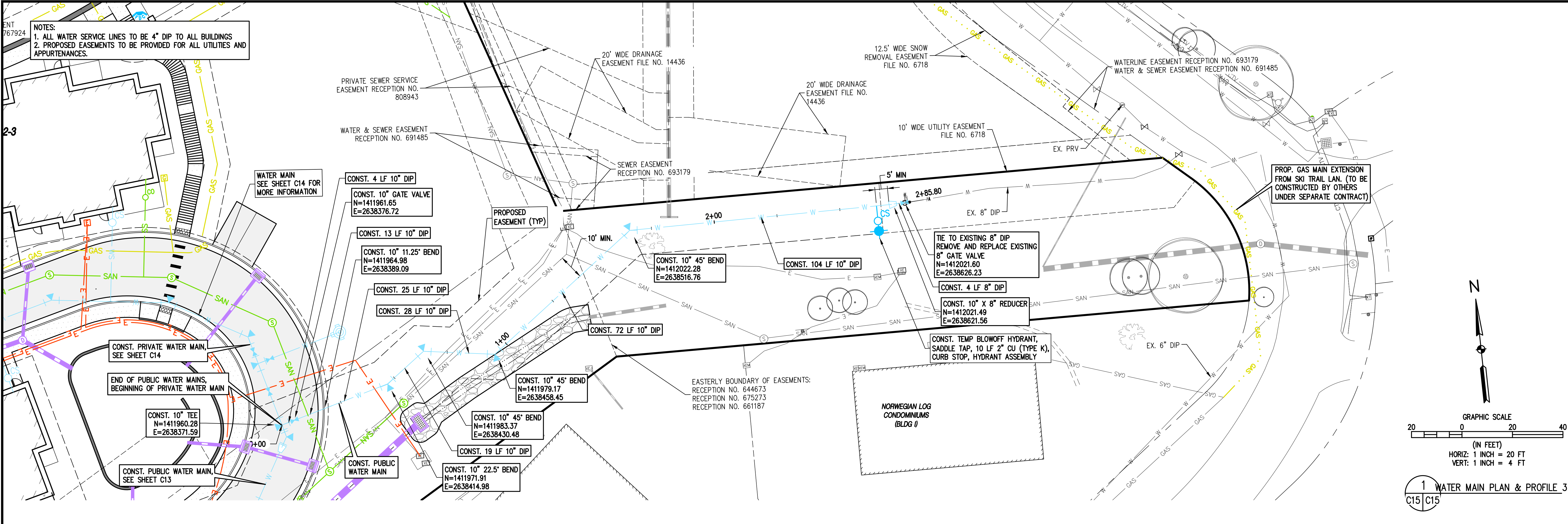
**PRELIMINARY
NOT FOR
CONSTRUCTION**

FOR AND ON BEHALF OF
BASELINE CORPORATION

INITIAL SUBMITTAL	12/22/2022
DRAWING SIZE	24" X 36"
SURVEY FIRM	LANDMARK, INC
SURVEY DATE	06/03/22
JOB NO.	C020235
DRAWING NAME	20235 P&P-WATER PLAN.dwg
SHEET	15 OF 68

C13

c:\co20235 astrid-edgemont ph2\Drawings\CONCEPT\20235 P&P-WATER PLAN.dwg, 5/19/2023 1:14:00 PM, Steve Batchelder



BASELINE
Engineering - Planning - Surveying
169 HILLTOP PKWY, SUITE 204 • STEAMBOAT SPRINGS, CO 80477
P. 970781925 • F. 3033403659 • www.baselinecorp.com

DESIGNED BY	TJM	DATE	05/18/2023
DRAWN BY	TJM	PREPARED BY	SMG
CHECKED BY	MRB	REVISIONS PER DRT #	COMMENTS

REVISION	DESCRIPTION
C15	C15

STEAMBOAT ESQUIAR LP
THE ASTRID
2410 SKI TRAIL LANE
WATER MAIN PLAN & PROFILE 3
ROUTT COUNTY
STEAMBOAT SPRINGS

FOR AND ON BEHALF OF
BASELINE CORPORATION

PRELIMINARY
NOT FOR
CONSTRUCTION

INITIAL SUBMITTAL	12/22/2022
DRAWING SIZE	24" X 36"
SURVEY FIRM	LANDMARK, INC
SURVEY DATE	06/03/22
JOB NO.	C020235
DRAWING NAME	20235 P&P-WATER PLAN.dwg
SHEET	17 OF 68

C15

NOTES:

1. SANITARY SEWER MAIN PIPE TO BE 8" PVC.
2. SANITARY SEWER SERVICE PIPE TO BE 4" PVC UNLESS NOTED OTHERWISE.
3. ELECTRIC AND GAS ARE SHOWN SCHEMATICALLY. TELE. AND TV LAYOUTS TO BE DETERMINED.
4. PROPOSED EASEMENTS TO BE PROVIDED FOR ALL UTILITIES AND DRAINAGE STRUCTURES

ELKHORN CONDOMINIUMS

BLDG 6

BLDG 5

BLDG 2-3

SSMH-01-MAIN
CONST. 4" DIA. MANHOLE
TIE TO EXISTING MAIN
CONTRACTOR TO VERIFY LOCATION
AND INVERT PRIOR TO CONSTRUCTION
N = 1,411,774.01
E = 2,638,069.30

SSMH-02-MAIN
STA. 0+82.40
CONST. 4" DIA. DROP MANHOLE
N = 1,411,779.94
E = 2,638,151.38

SSMH-03-MAIN
STA. 1+79.40
CONST. 4" DIA. MANHOLE
N = 1,411,860.44
E = 2,638,205.48

SSMH-04-MAIN
STA. 2+26.49
CONST. 4" DIA. MANHOLE
N = 1,411,887.82
E = 2,638,243.79

SSMH-05-MAIN
STA. 3+47.12
CONST. 4" DIA. MANHOLE
N = 1,411,919.05
E = 2,638,360.31

SSMH-06-MAIN
STA. 3+82.15
CONST. 4" DIA. DROP MANHOLE
N = 1,411,939.94
E = 2,638,388.44

SSMH-07-MAIN
STA. 4+45.37
CONST. 4" DIA. MANHOLE
N = 1,412,001.01
E = 2,638,372.09

SSMH-08-MAIN
STA. 4+89.05
CONST. 4" DIA. MANHOLE
N = 1,412,022.99
E = 2,638,334.34

SSMH-09-MAIN
STA. 5+37.42
CONST. 4" DIA. MANHOLE
N = 1,412,029.21
E = 2,638,286.37

SSMH-10-MAIN
STA. 5+80.27
CONST. 4" DIA. MANHOLE
N = 1,412,018.59
E = 2,638,244.86

POOL

SKI TRAIL CONDOMINIUMS

GONDOLA LANE

SKY INN CONDOMINIUMS (LOT 4)

NORWEGIAN LOG CONDOMINIUMS (BLDG II)

GRAPHIC SCALE
(IN FEET)
HORIZ: 1 INCH = 30 FT
VERT: 1 INCH = 6 FT

