

COLOR LEGEND

	EIFS #1: Medium sand texture, Color match to Benjamin Moore: 1031 Carlisle Cream
	EIFS #2: Medium sand texture, Color match to Benjamin Moore: 1036 Deer Trail
	STONE VENEER: Coronado Stone "Quick Stack - Coastal Brown". Install over continuous insulation as per NCMA ASTM C1780 installation guide, figure 4b or equal.
	SIDING: Centria CS-620, Horizontal Orientation, Color match to Benjamin Moore: 1033 Hillsborough Beige
	WINDOW TRIM: Color match to Benjamin Moore: OC-65 - Chantilly Lace
	ACCENT: Fascia, Soffits, trim, gutters and downspouts. Color match to Benjamin Moore: 2111-20 Grizzly Bear Brown
	ROOFING: Asphalt Shingle, GAF Timberline HDZ, Color "Mission Brown"

GENERAL NOTES:

- See door and window schedules for door and window types. Doors, windows and louvers to be prefinished. All windows to be bronze aluminum with thermally broken frames.
- Provide blocking and power for all exterior signage. All signage shall be as per hotel standards (size, color, etc.). Signage shall be aluminum channels, internally lit (L.E.D.), with colored acrylic faces. Final sign package shall be submitted under separate sign permit for approval. Coordinate installation of exterior signage prior to closing up the walls.
- Stucco system to be EIFS typical. Provide "V" joints as shown. Install as per manufacturers' requirements and details. Colors shall match paint colors noted.
- Moisture resistant barrier (MRB) shall be liquid applied, typical throughout. Install as per manufacturers' requirements based on the finishes to be used. Utilize sheathing tape, flashing membrane, drain edge tape, and other accessories as necessary for a complete single source system.
- Install stone as per manufacturers' recommendations. Provide a 30# felt slip barrier between stone base coat and MRB if required by MRB manufacturer.
- Metal gutters and downspouts shall be pre-finished and shall match fascia color, typical. Pitch outlets away from building foundation.
- Building lighting is primarily via wall mounted surface L.E.D. lights.

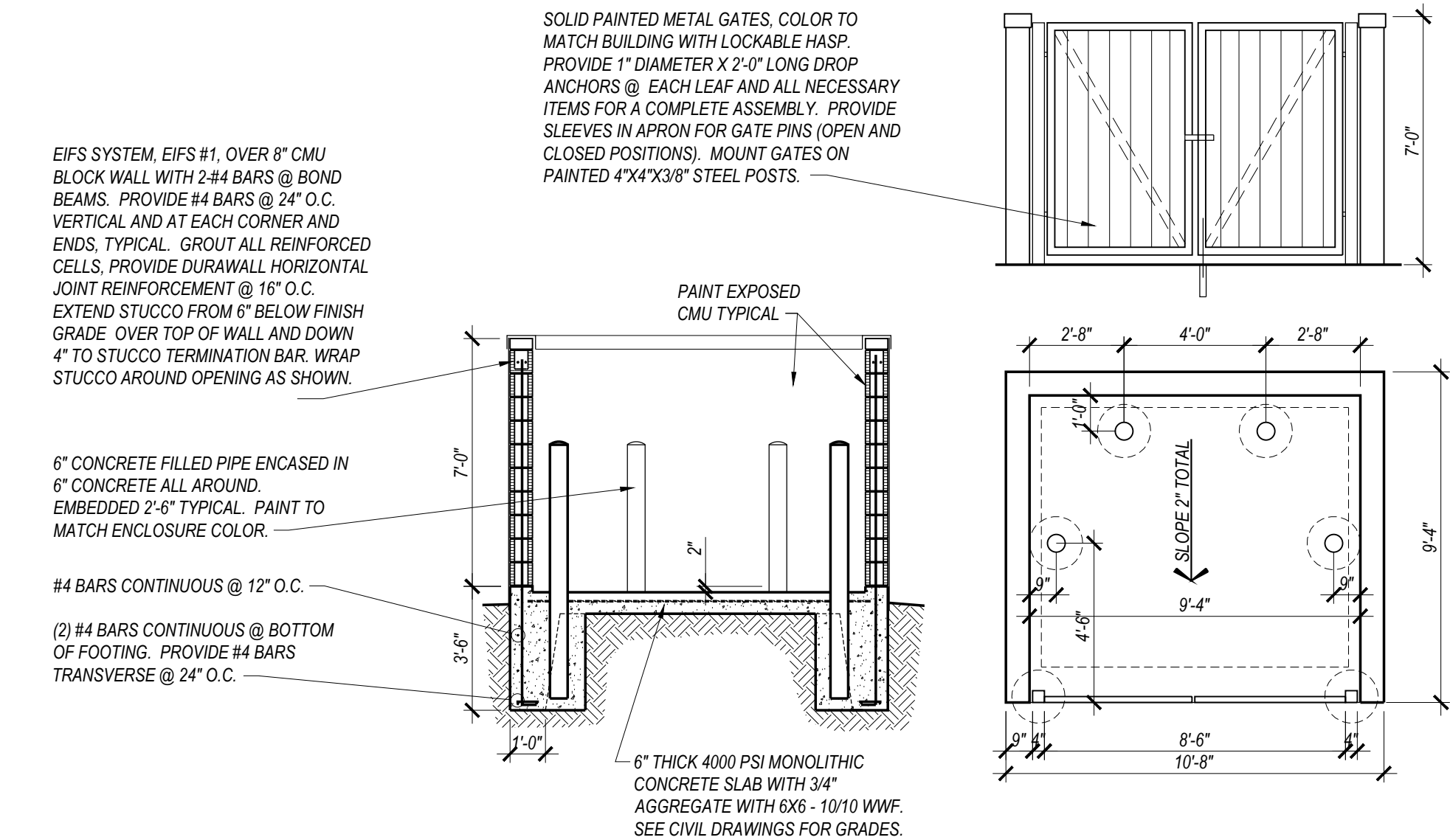
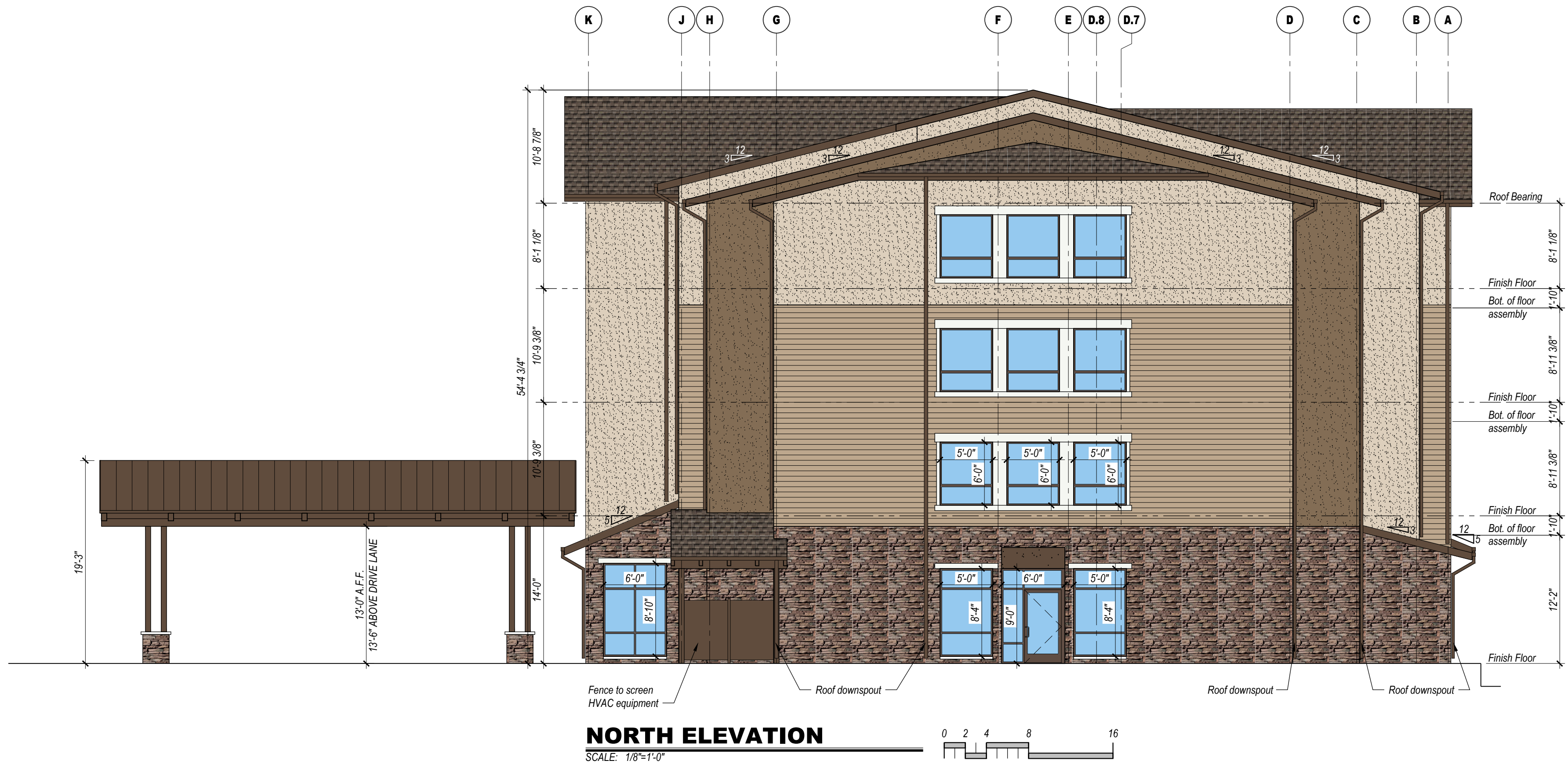
TRANSPARENCY CALCULATIONS

NOTE: STORY HEIGHT MEASUREMENTS TAKEN FROM FINISH FLOOR TO BOTTOM OF FLOOR/CEILING OR ROOF CEILING ASSEMBLY ABOVE.

GROUND FLOOR FRONT FACADE (US 40) = 40% REQUIRED
TOTAL SURFACE AREA = 184' X 12.17' (STORY HEIGHT) = 2,239.3 SQ. FT.
TOTAL TRANSPARENT AREA PROVIDED = 898.7 SQ. FT. (40.1 %)

GROUND FLOOR OTHER FACADES = 30% REQUIRED
TOTAL SURFACE AREA = 348' X 12.17' (STORY HEIGHT) = 4,235.2 SQ. FT.
TOTAL TRANSPARENT AREA PROVIDED = 1,275.9 SQ. FT. (30.1 %)

UPPER FLOOR FACADES (ALL SIDES, 2ND STORY CALCULATIONS) = 25% REQUIRED
TOTAL SURFACE AREA = 532' x 9' (STORY HEIGHT) = 4,788 SQ. FT.
TOTAL TRANSPARENT AREA PROVIDED = 1,233.4 SQ. FT. (25.8 %)



1 REFUSE ENCLOSURE

SCALE: 1/4"=1'-0"

PLAN, SECTION, AND ELEVATION

