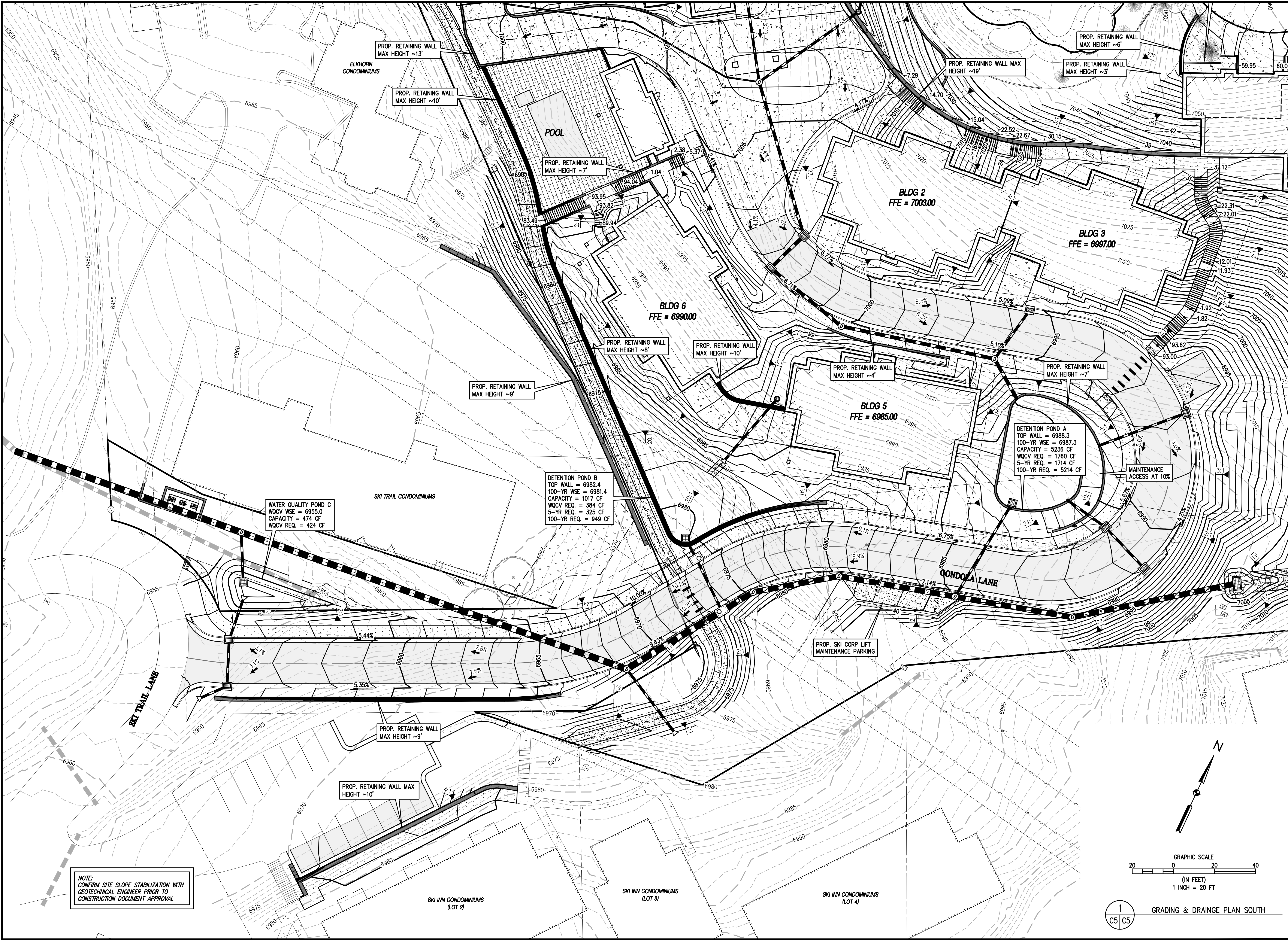


c:\co20235 astrid-edgemont ph2\Drawings\CONCEPT\20235 GRADING & DRAINAGE PLAN.dwg, 5/19/2023 1:03:19 PM, Steve Botchelder



BASELINE

Engineering - Planning - Surveying

169 HILLTOP PKWY, SUITE 204 • STEAMBOAT SPRINGS, CO 80477

P. 970.678.925 • F. 303.340.9659 • www.baselinecorp.com

DESIGNED BY
TJM

DRAWN BY
TJM

CHECKED BY
MRB

DATE
05/18/2023

PREPARED BY
SMG

REVISIONS PER DWT #1 COMMENTS

REVISION DESCRIPTION

ROUTT COUNTY

STEAMBOAT ESQUIAR LP

THE ASTRID

2410 SKI TRAIL LANE

GRADING & DRAINAGE PLAN SOUTH

STEAMBOAT SPRINGS

PREPARED UNDER THE DIRECT SUPERVISION OF

PRELIMINARY
NOT FOR
CONSTRUCTION

FOR AND ON BEHALF OF
BASELINE CORPORATION

INITIAL SUBMITTAL 12/22/2022

DRAWING SIZE 24" X 36"

SURVEY FIRM LANDMARK, INC

SURVEY DATE 06/03/22

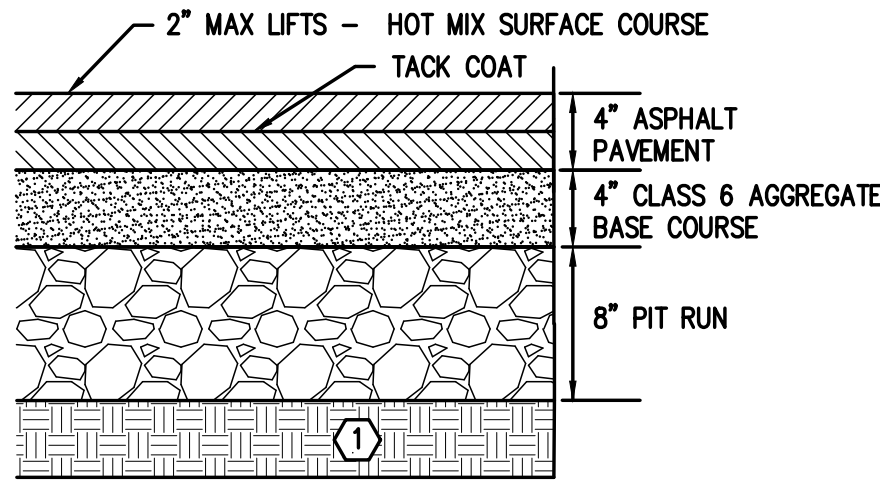
JOB NO. C020235

DRAWING NAME 20235 GRADING & DRAINAGE PLAN.dwg

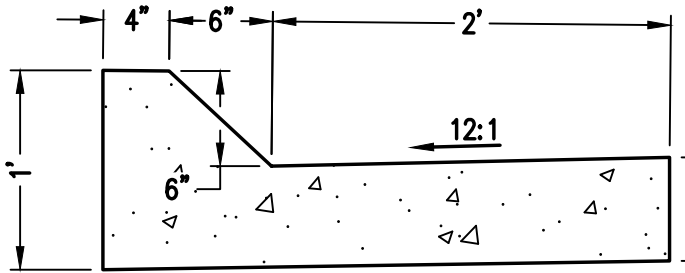
SHEET 07 OF 68

C5

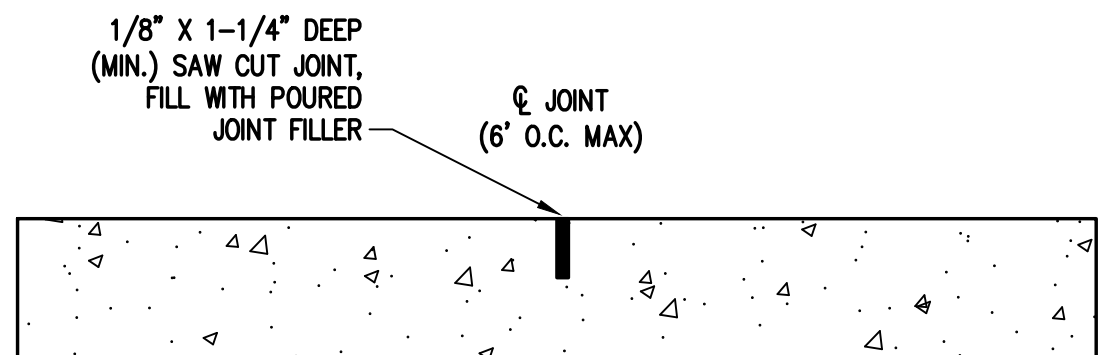
c:\co20235 astrid-edgemont ph2\Drawings\CONCEPT\20235 DETAILS.dwg, 5/19/2023 1:25:25 PM, Steve Batchelder



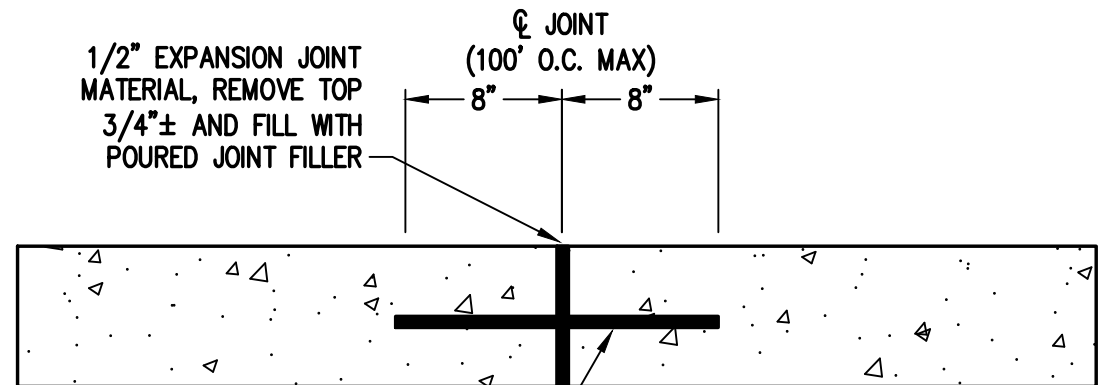
1 ASPHALT PAVEMENT SECTION
NOTE: CONFIRM WITH GEOTECHNICAL ENGINEER
NOT TO SCALE



2 CURB AND GUTTER TYPE 2 SECTION IIM
6 IN. MOUNTABLE - 2 FT. GUTTER
NOT TO SCALE



CONTRACTION JOINT

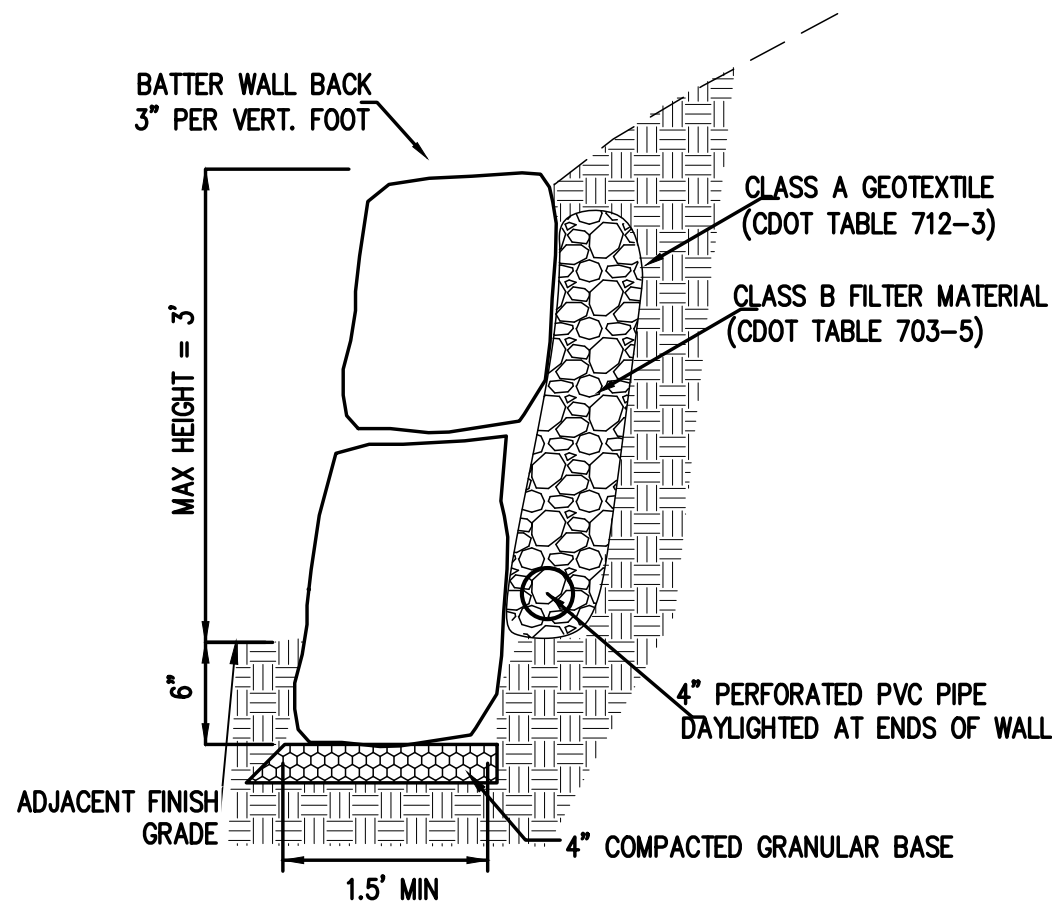


EXPANSION JOINT

SEALANT AND JOINT NOTES:

1. SEALANT IS REQUIRED ON ALL JOINTS WITHIN THE ROADWAY & DRIVEWAY. SEALANT IS ONLY REQUIRED IN EXPANSION JOINTS ON SIDEWALK, CURB, AND APRONS (SPLASH CURBS). WHERE REQUIRED, SEALANT IS APPLIED TO ALL EXPOSED HORIZONTAL AND VERTICAL SURFACES.
2. CONTRACTOR TO DEVELOP JOINT LAYOUT PLAN AND PROVIDE TO ENGINEER FOR REVIEW.

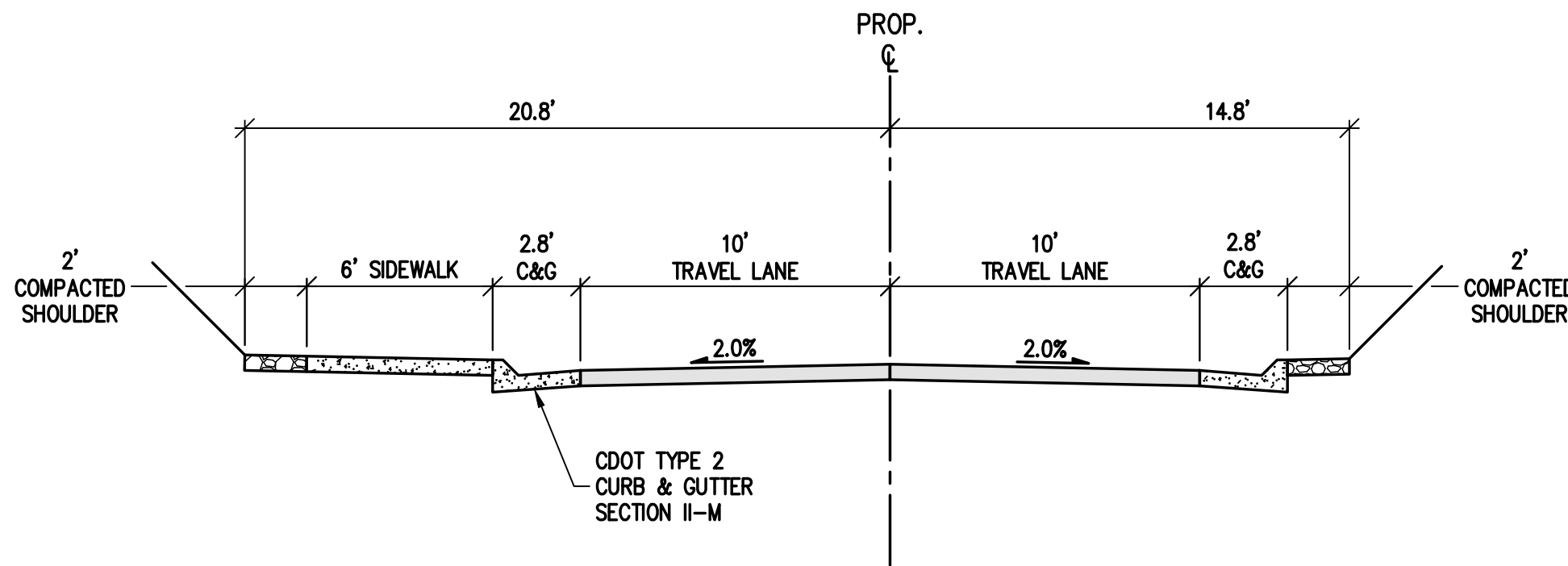
3 CONCRETE SIDEWALK JOINT DETAIL
NOT TO SCALE



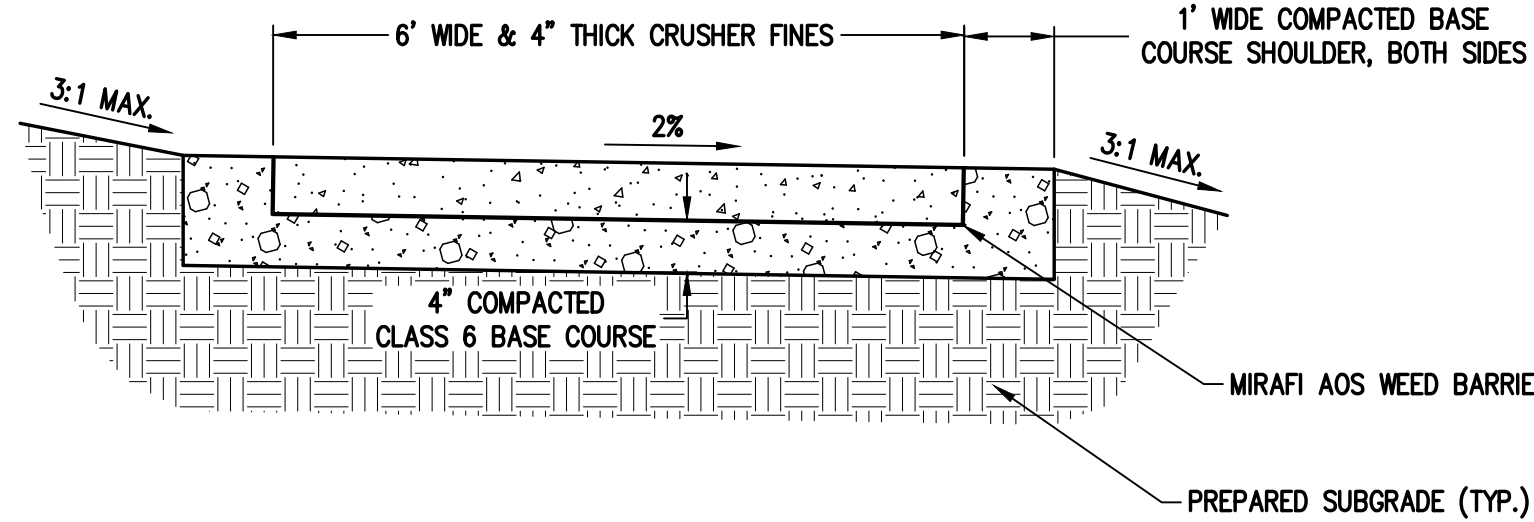
NOTES:

1. LANDSCAPE BOULDERS TO BE FREE OF SURFACE BLEMISHES & CRACKS. CONTRACTOR TO COORDINATE WITH OWNER ON BOULDER SELECTION.
2. BOULDERS ALONG BOTTOM COURSE TO BE LARGER FOR FOUNDATION OF STACKED WALL WITH APPROXIMATE DIMENSIONS OF 15" - 18". CONTRACTOR TO CAREFULLY PLACE AND FIT BOULDERS FOR SECURE AND STABLE STACKED CONDITION.

4 LANDSCAPE BOULDER RETAINING WALL
NOT TO SCALE



5 ACCESS DRIVE TYPICAL SECTION
NOT TO SCALE



6 SOFT SURFACE TRAIL TYPICAL SECTION
NOT TO SCALE

DESIGNED BY	TJM
DRAWN BY	TJM
CHECKED BY	MRB

DATE	05/18/2023
------	------------

PREPARED BY	SMG
-------------	-----

REVISION DESCRIPTION	
----------------------	--

REVISIONS PER DWT #	COMMENTS
---------------------	----------

REVISIONS PER DWT #	COMMENTS
---------------------	----------

REVISIONS PER DWT #	COMMENTS
---------------------	----------

ROUT	COUNTY
------	--------

STEAMBOAT SPRINGS	
-------------------	--

THE ASTRID	
------------	--

2410 SKI TRAIL LANE	
---------------------	--

TYPICAL SECTIONS & DETAILS	
----------------------------	--

PREPARED UNDER THE DIRECT SUPERVISION OF	
--	--

FOR AND ON BEHALF OF	
----------------------	--

INITIAL SUBMITTAL	12/22/2022
-------------------	------------

DRAWING SIZE	24" X 36"
--------------	-----------

SURVEY FIRM	SURVEY DATE
-------------	-------------

LANDMARK, INC	06/03/22
---------------	----------

JOB NO.	C020235
---------	---------

DRAWING NAME	20235 DETAILS.dwg
--------------	-------------------

SHEET	33 OF 68
-------	----------