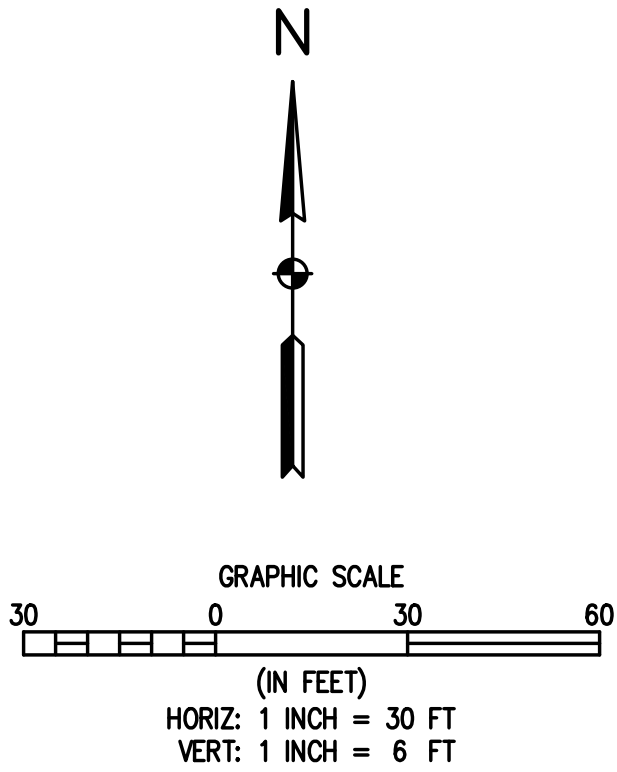
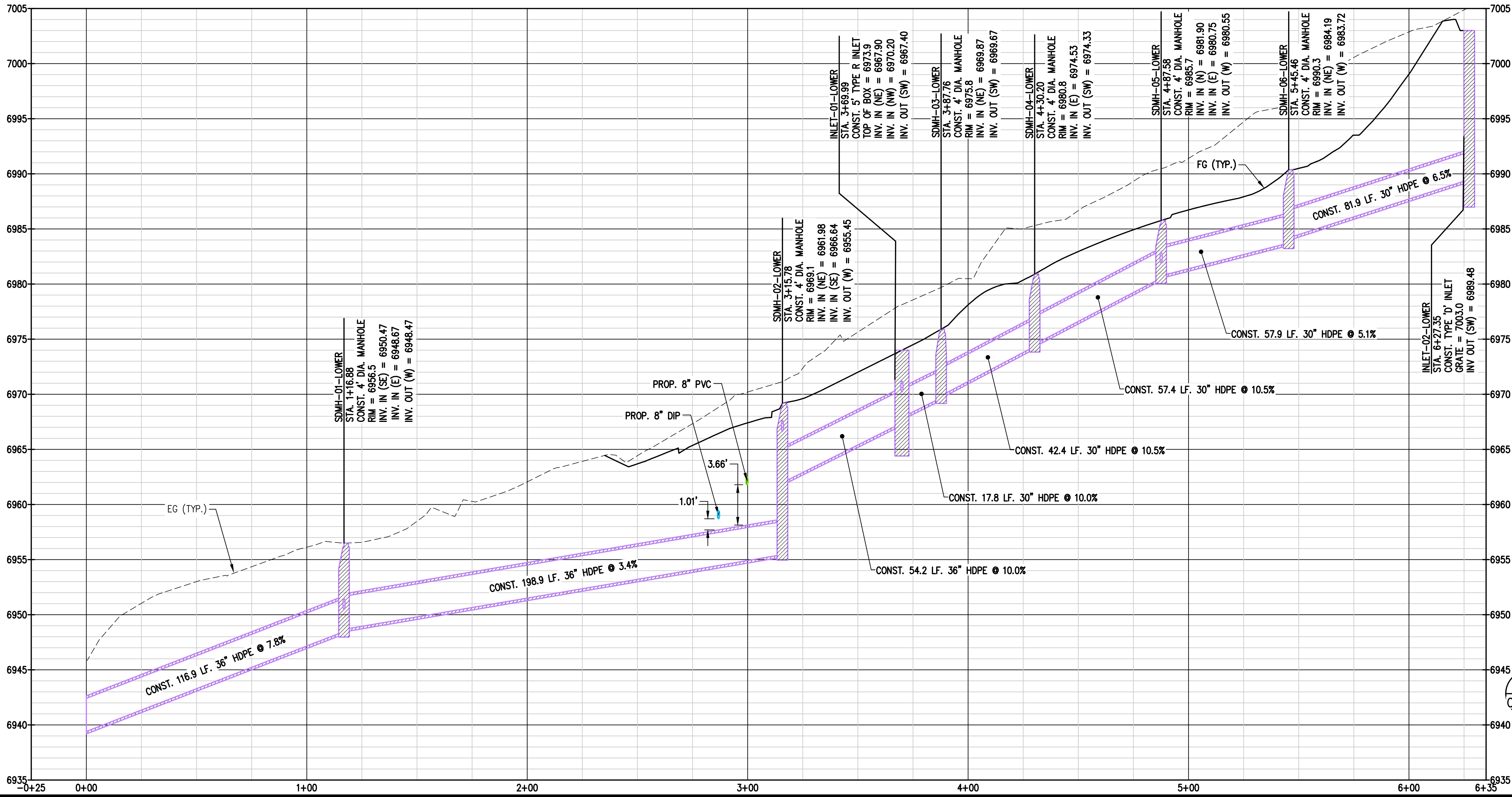
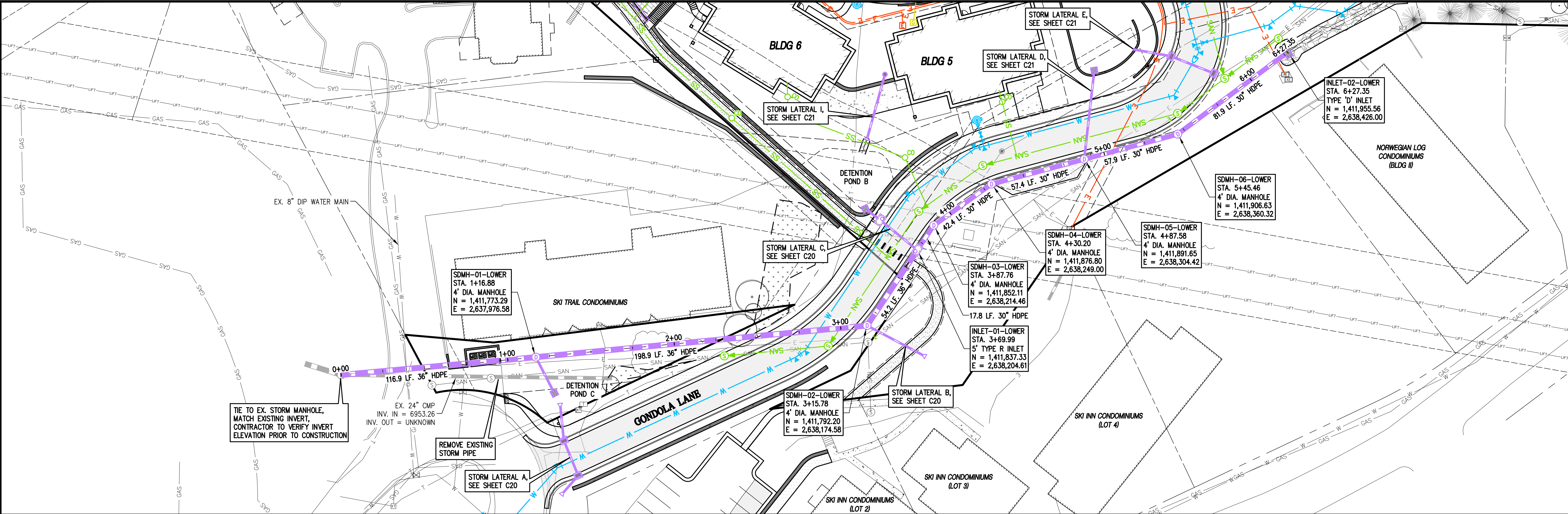


c:\co20235 astrid-edgemont ph2\Drawings\CONCEPT\20235 P&P-STORM MAIN.dwg, 5/19/2023 1:19:58 PM, Steve Batchelder



BASELINE

Engineering - Planning - Surveying

169 HILLTOP PKWY, SUITE 204 • STEAMBOAT SPRINGS, CO 80477

P. 970.678.925 • F. 303.940.969 • www.baselinecorp.com

DESIGNED BY

TJM

DATE

05/18/2023

PREPARED BY

SMG

REVISION DESCRIPTION

REVISIONS PER ART. # COMMENTS

CHECKED BY

MRB

STEAMBOAT ESQUIAR LP

THE ASTRID

2410 SKI TRAIL LANE

LOWER STORM MAIN PLAN & PROFILE

ROUTT COUNTY

STEAMBOAT SPRINGS

FOR AND ON BEHALF OF

BASELINE CORPORATION

INITIAL SUBMITTAL

12/22/2022

DRAWING SIZE

24" X 36"

SURVEY FIRM

LANDMARK, INC

SURVEY DATE

06/03/22

JOB NO.

C020235

DRAWING NAME

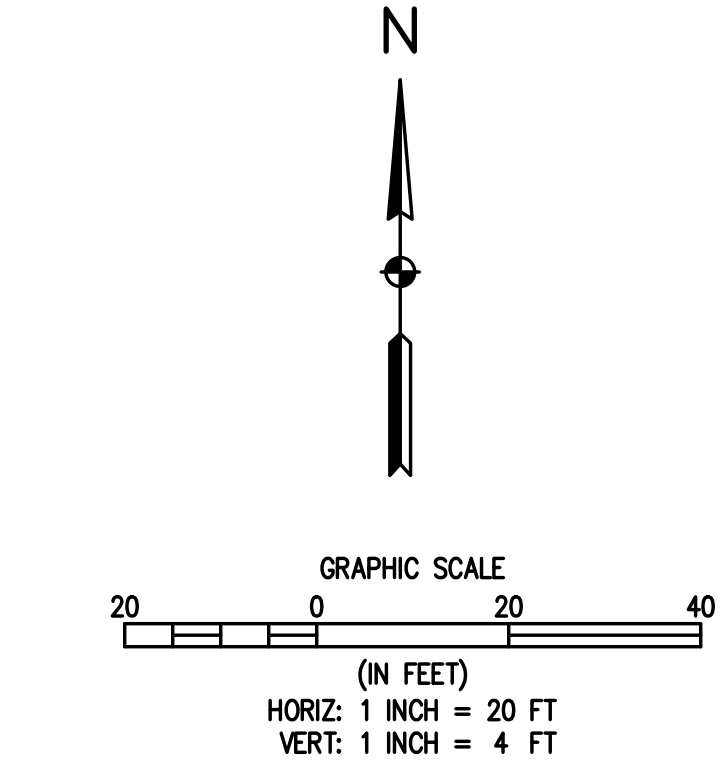
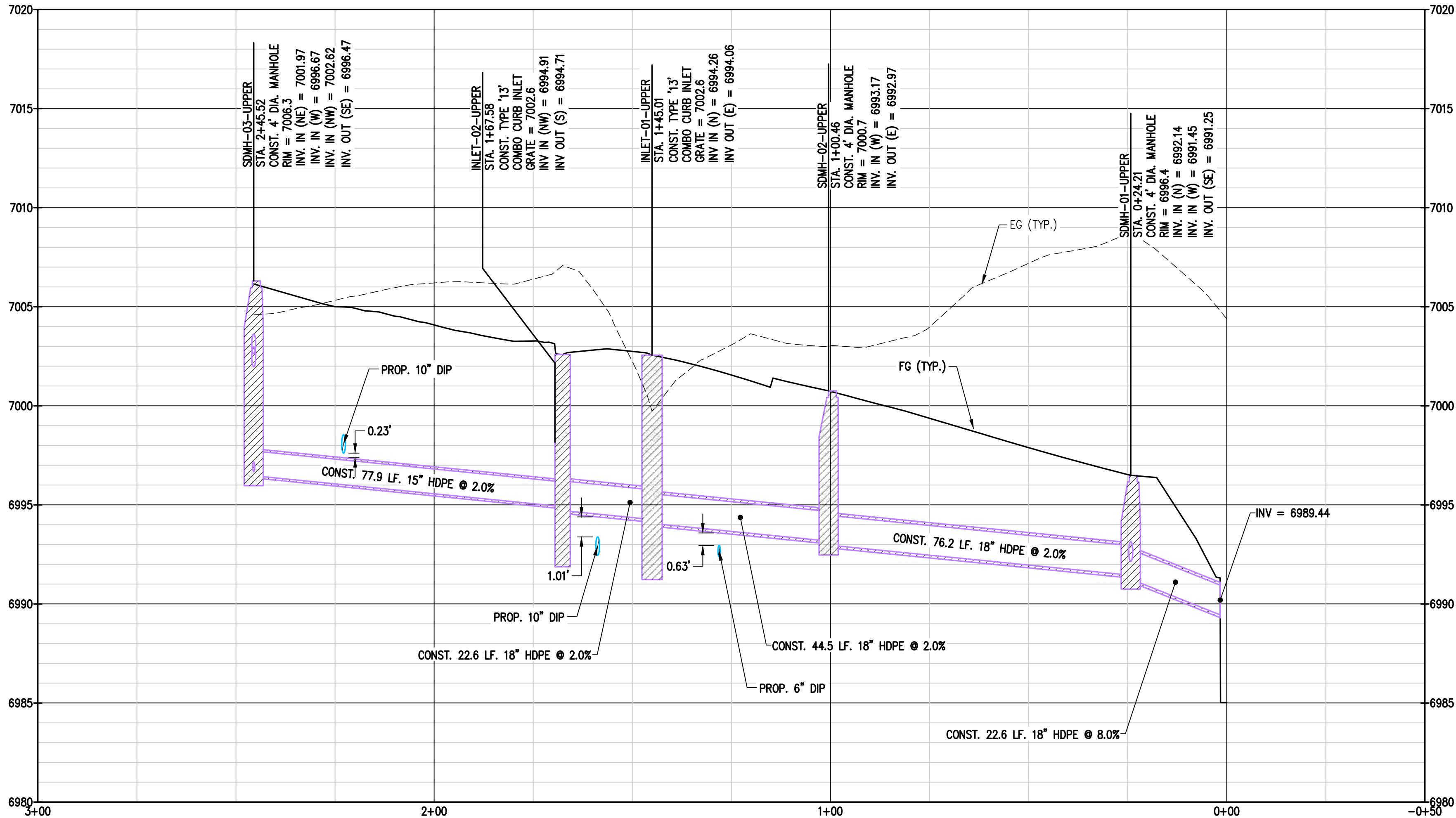
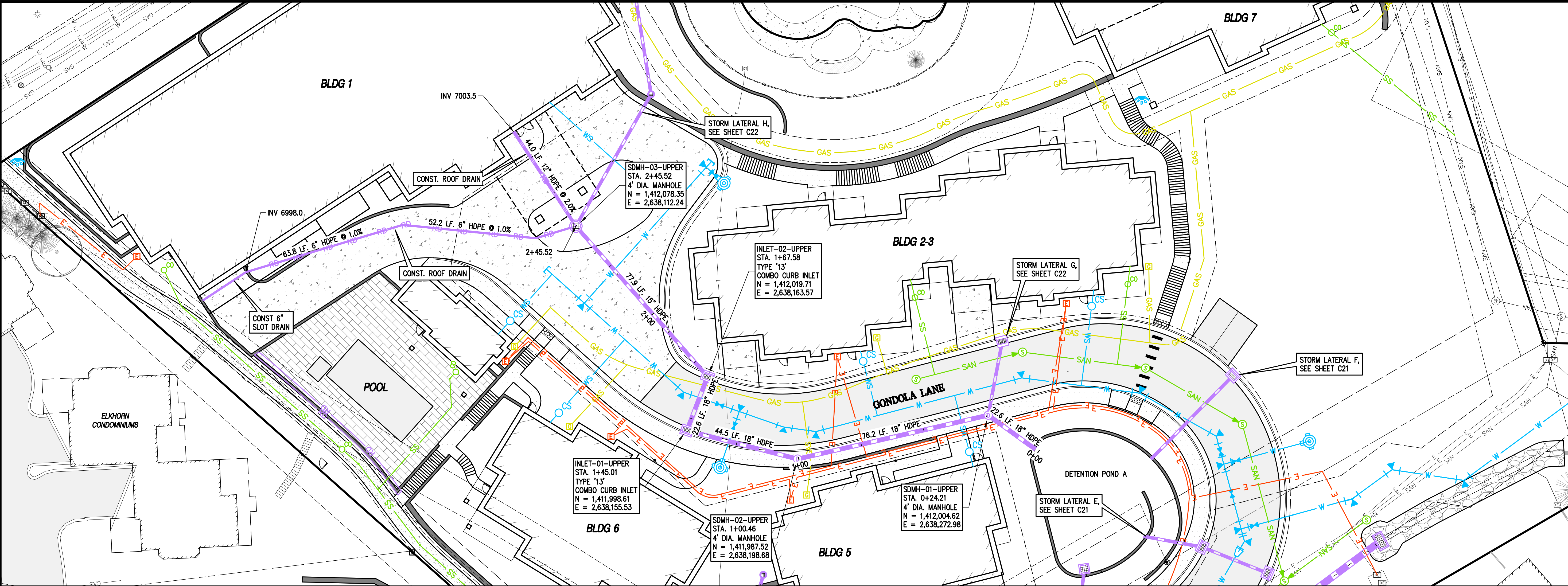
20235 P&P-STORM MAIN.dwg

SHEET

20 OF 68

C18

c:\co20235 astrid-edgemont ph2\Drawings\CONCEPT\20235 P&P-STORM MAIN.dwg, 5/19/2023 1:20:12 PM, Steve Batchelder



1 UPPER STORM MAIN PLAN & PROFILE

BASELINE

Engineering • Planning • Surveying

169 HILLTOP PKWY, SUITE 204 • STEAMBOAT SPRINGS, CO 80477
P. 970.678.925 • F. 303.940.9859 • www.baselinecorp.com

DESIGNED BY
TJM

DRAWN BY
TJM

CHECKED BY
MRB

DATE
05/18/2023

PREPARED BY
SMG

REVISION DESCRIPTION

REVISIONS PER ART. # COMMENTS

ROUTE COUNTY

STEAMBOAT SPRINGS

THE ASTRID
2410 SKI TRAIL LANE
UPPER STORM MAIN PLAN & PROFILE

FOR AND ON BEHALF OF
BASELINE CORPORATION

INITIAL SUBMITTAL 12/22/2022

DRAWING SIZE 24" X 36"

SURVEY FIRM LANDMARK, INC

SURVEY DATE 06/03/22

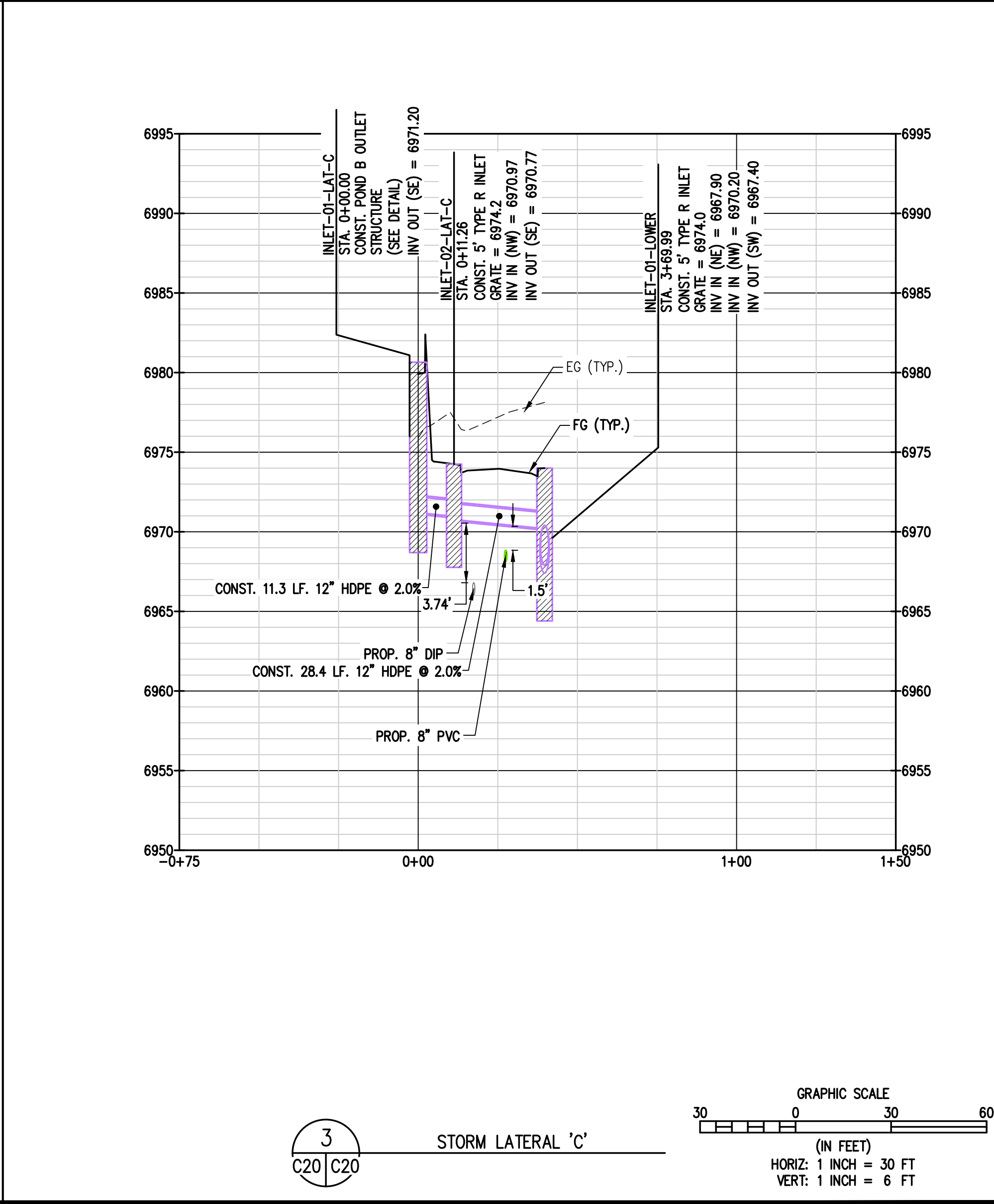
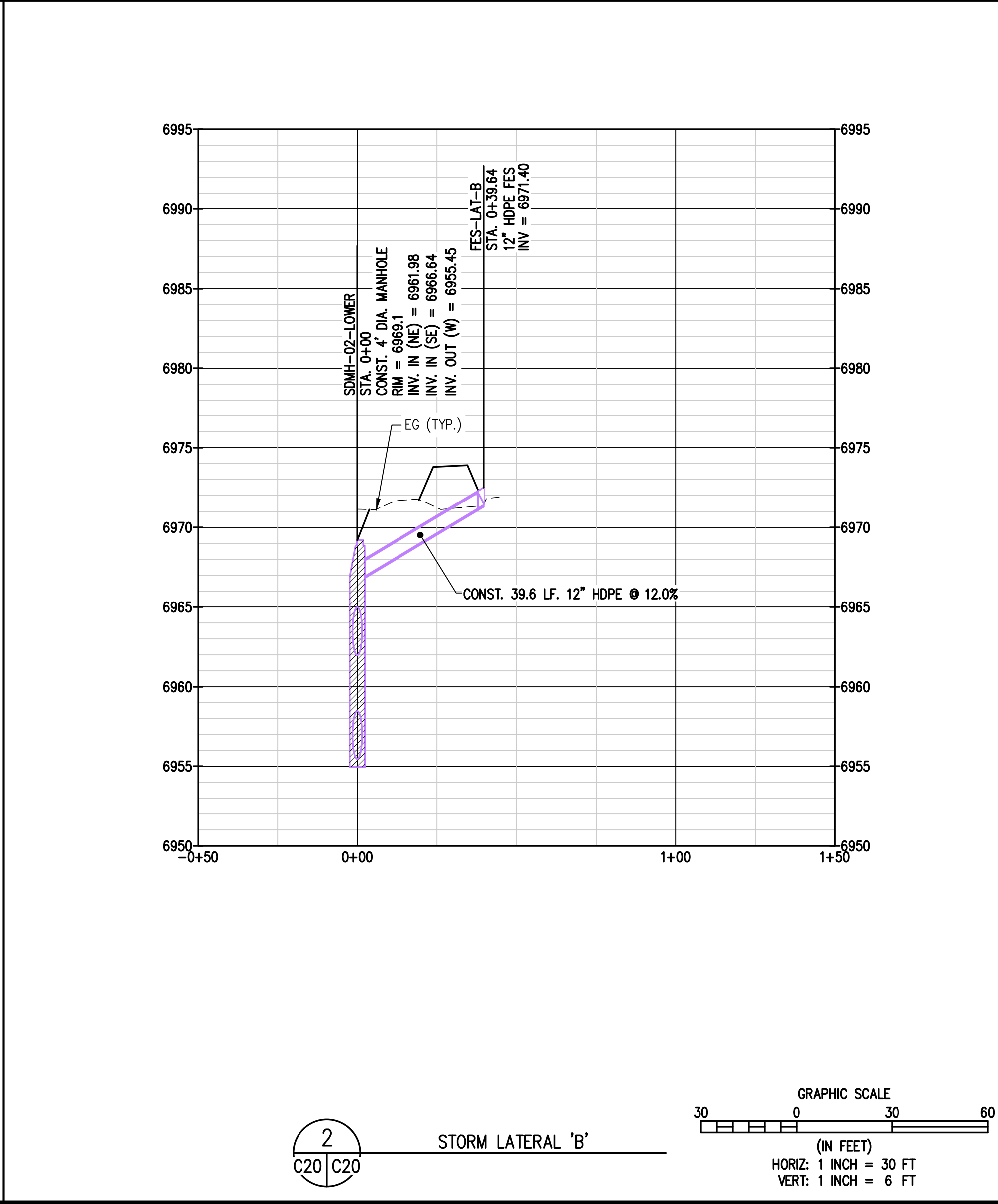
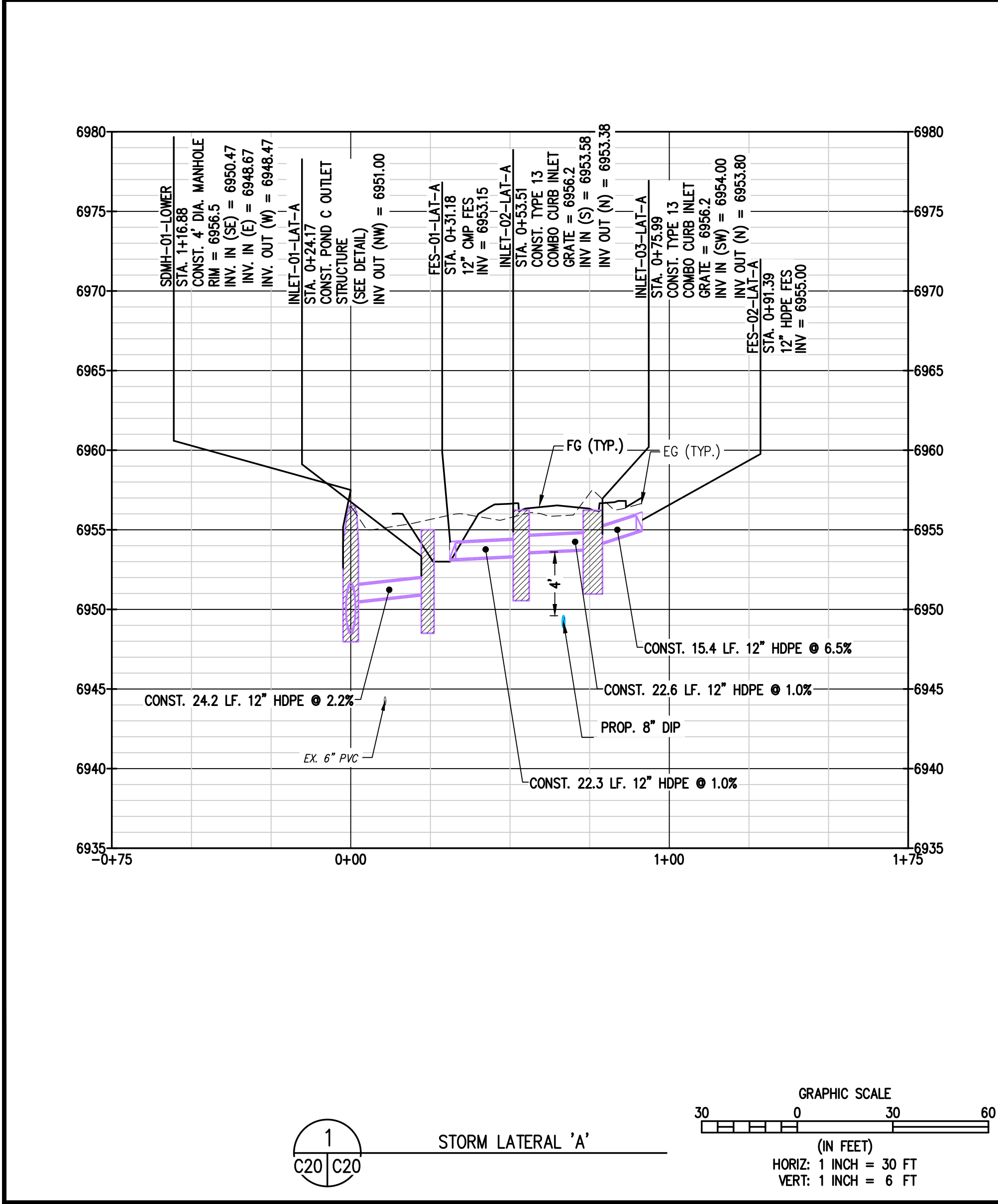
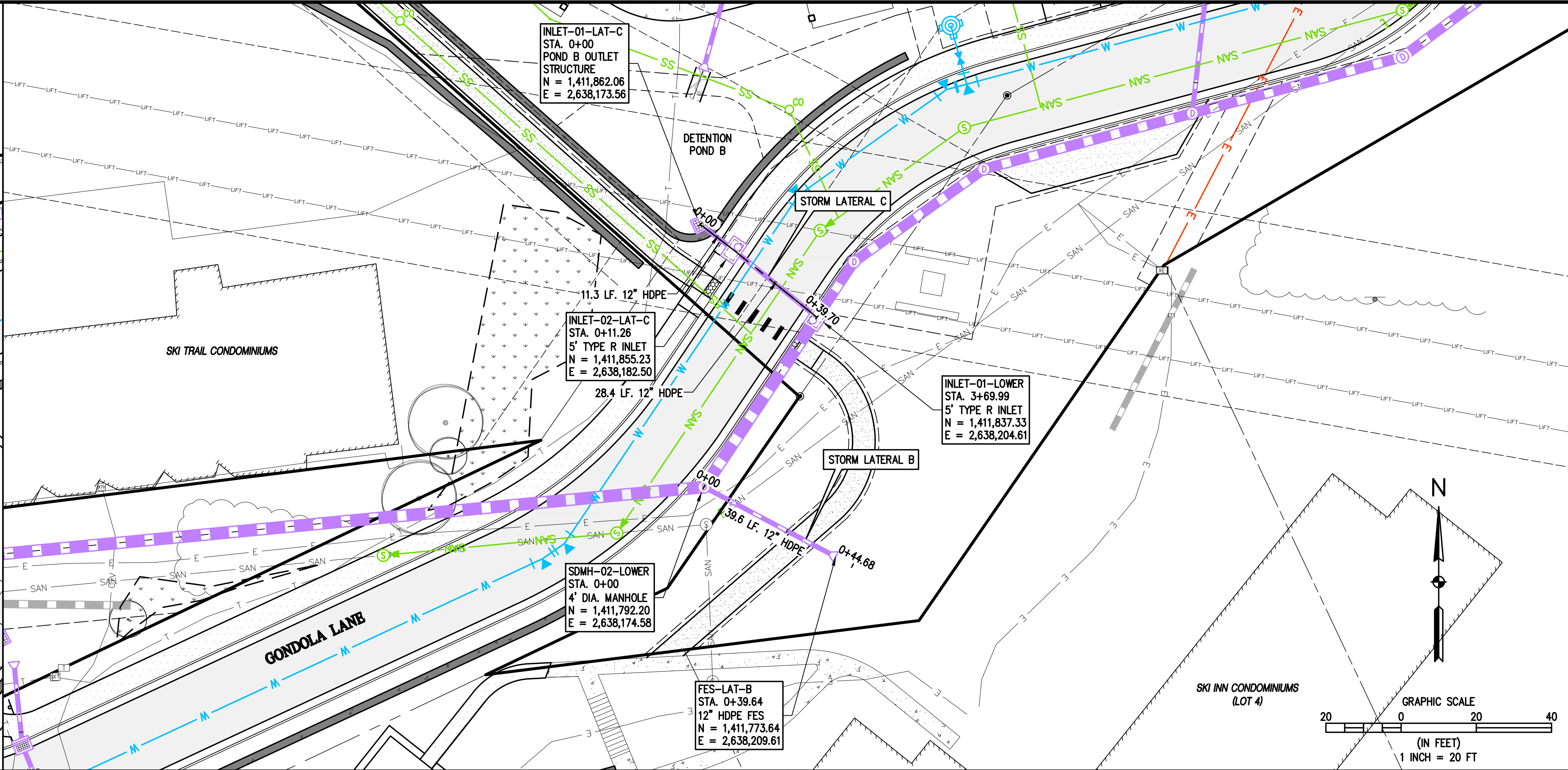
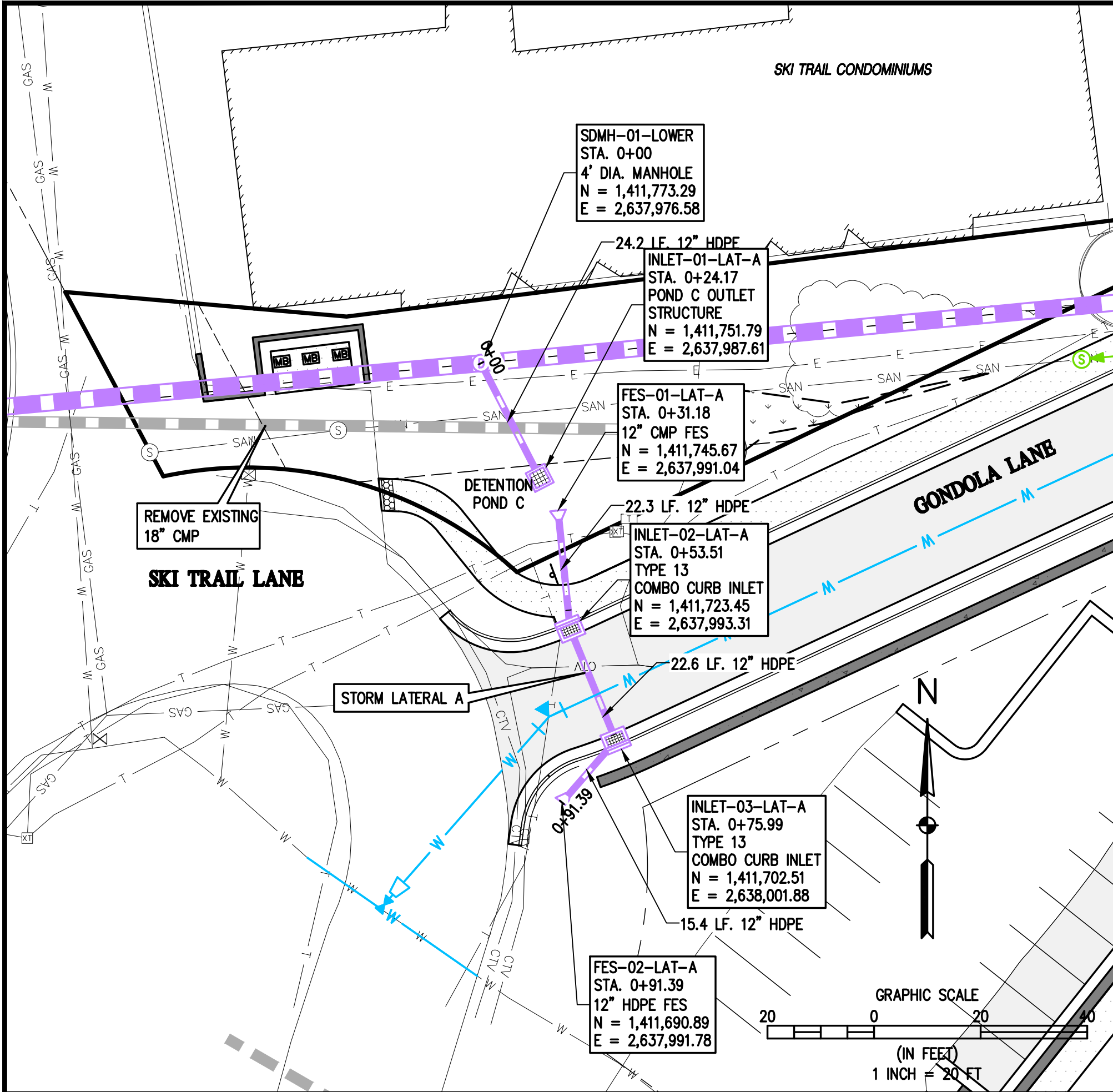
JOB NO. C020235

DRAWING NAME 20235 P&P-STORM MAIN.dwg

SHEET 21 OF 68

C19

c:\co20235 astrid-edgemont ph2\Drawings\CONCEPT\20235 P&P-STORM LATERALS.dwg, 5/19/2023 1:22:15 PM, Steve Batchelder



BASELINE

Engineering - Planning - Surveying

169 HILLTOP PKWY, SUITE 204 • STEAMBOAT SPRINGS, CO 80477
P. 970.679.825 • F. 303.940.9559 • www.baselinecorp.com

DESIGNED BY TJM
DRAWN BY TJM
CHECKED BY MRB

DATE 05/18/2023
PREPARED BY SMG

REVISION DESCRIPTION
REVISIONS PER URT # COMMENTS

STEAMBOAT ESQUIAR LP

THE ASTRID
2410 SKI TRAIL LANE
STORM LATERALS A, B, C PLAN & PROFILES

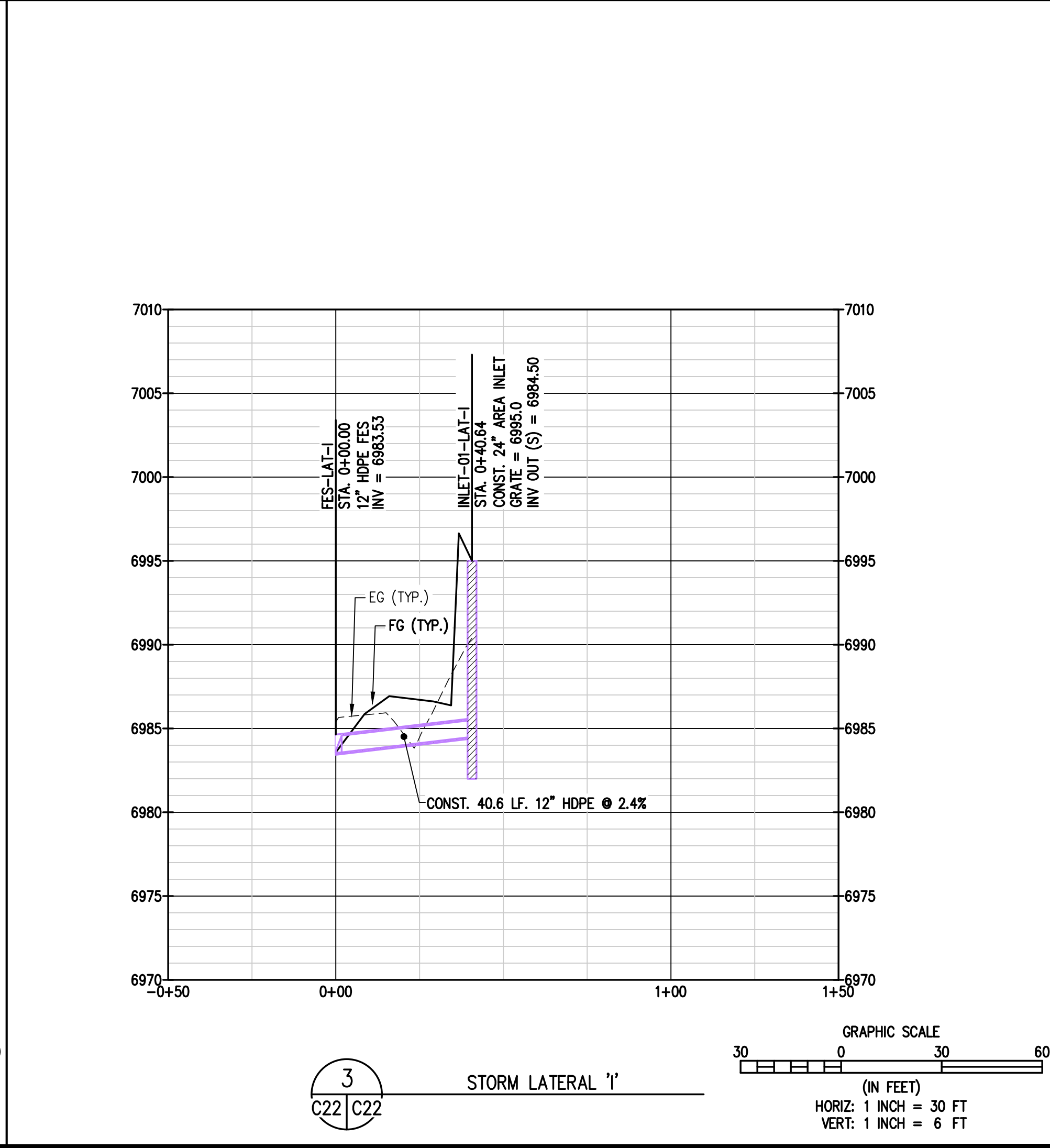
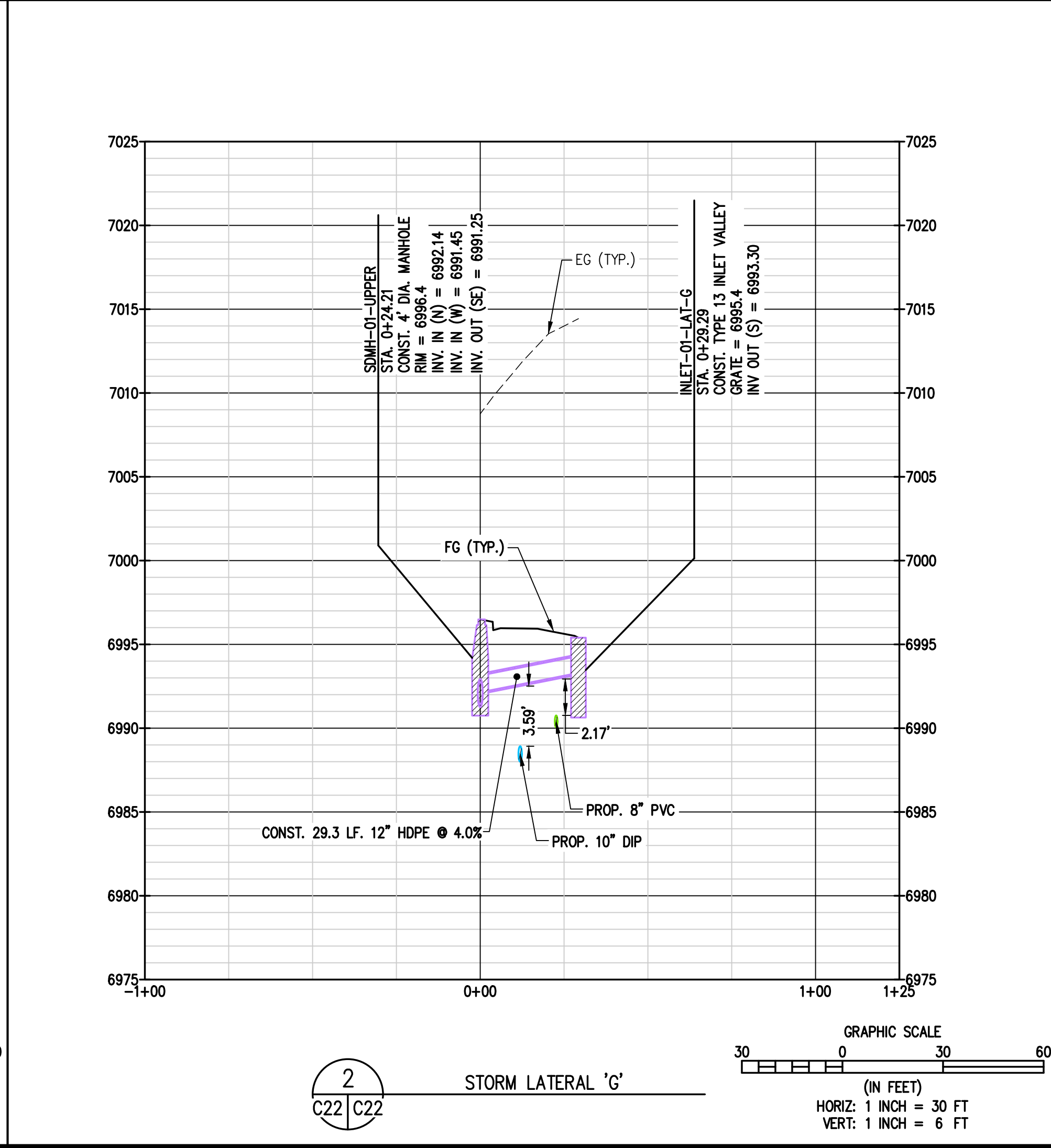
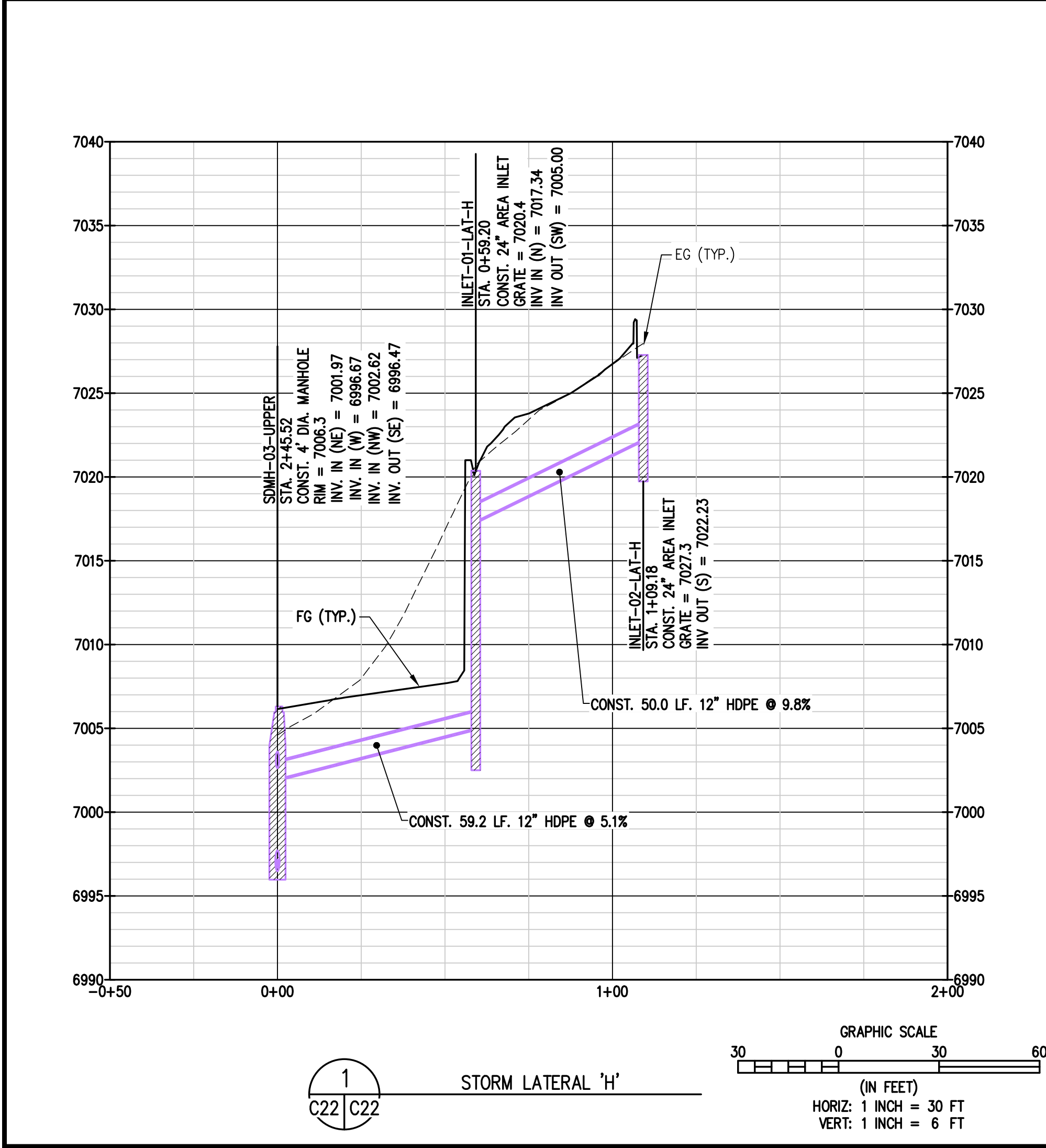
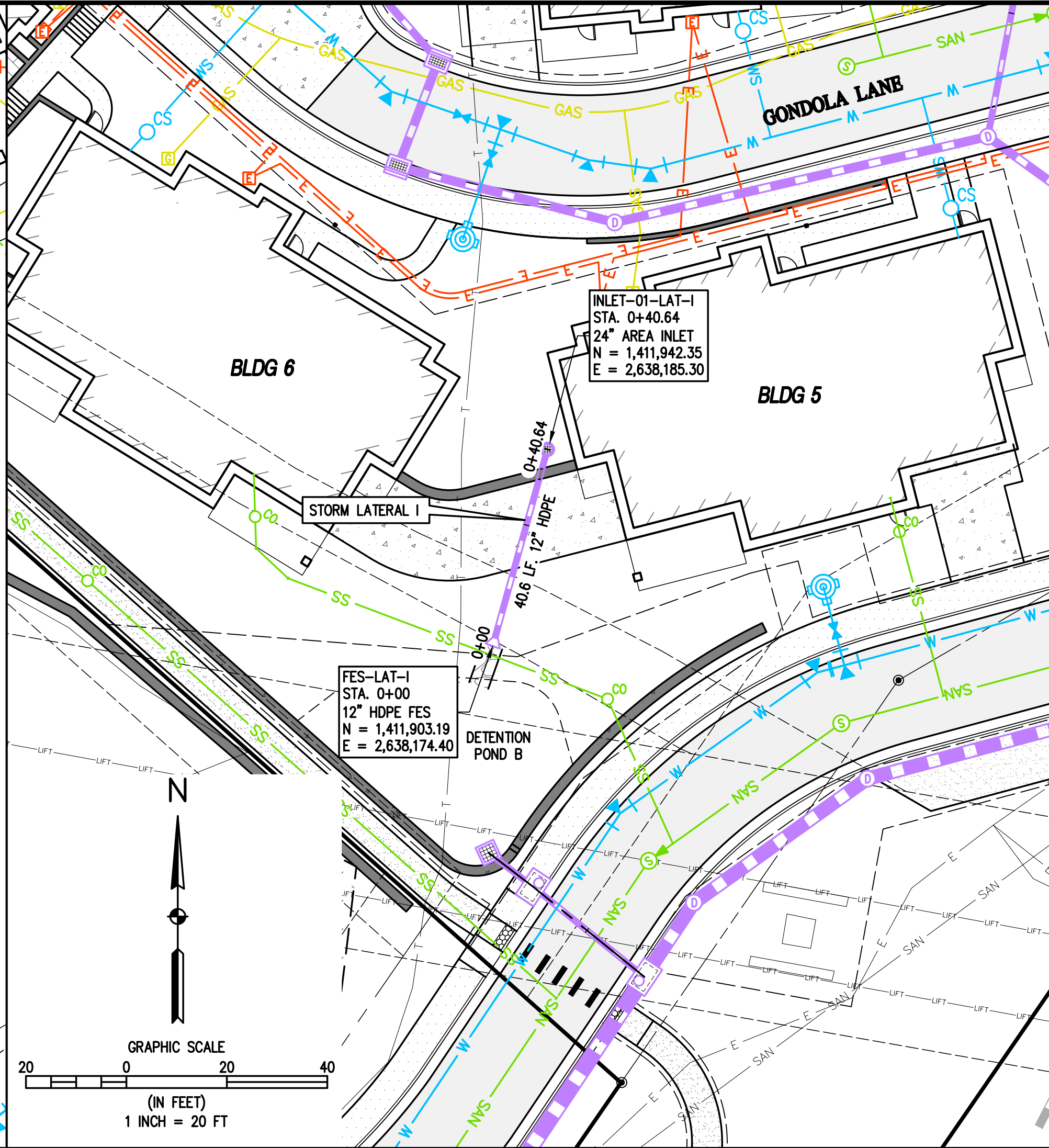
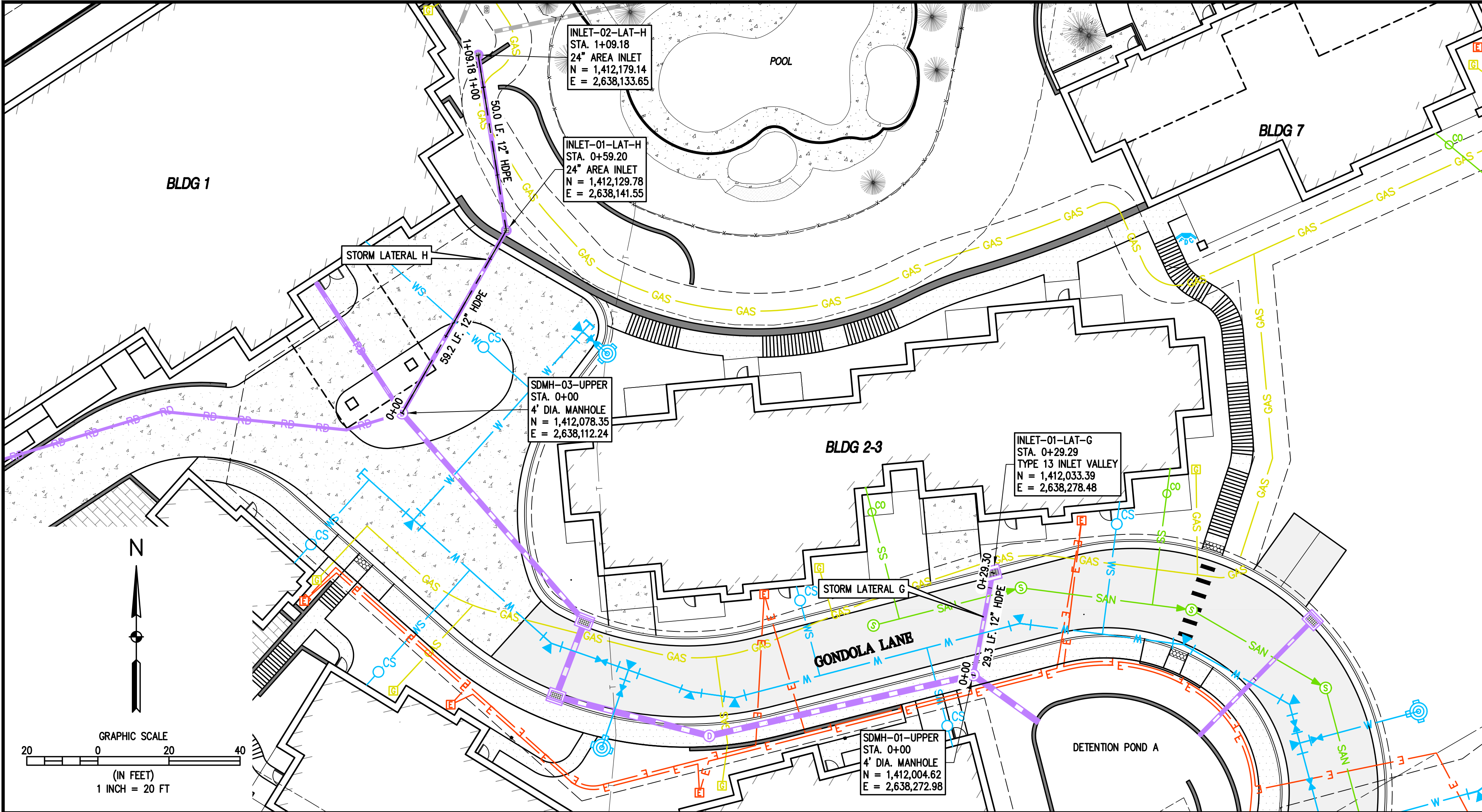
STEAMBOAT SPRINGS
ROUTT COUNTY

FOR AND ON BEHALF OF
BASELINE CORPORATION
INITIAL SUBMITTAL 12/22/2022
DRAWING SIZE 24" X 36"
SURVEY FIRM LANDMARK, INC
SURVEY DATE 06/03/22
JOB NO. C020235
DRAWING NAME 20235 P&P-STORM LATERALS.dwg
SHEET 22 OF 68

PRELIMINARY
NOT FOR
CONSTRUCTION

C20

c:\co20235 astrid-edgemont ph2\Drawings\CONCEPT\20235 P&P-STORM LATERALS.dwg, 5/19/2023 1:22:52 PM, Steve Batchelder



BASELINE Engineering - Planning - Surveying 169 HILLTOP PKWY, SUITE 204 • STEAMBOAT SPRINGS, CO 80477 P. 970.679.825 • F. 303.940.9859 • www.baselinecorp.com	
DESIGNED BY TJM	DATE 05/18/2023
DRAWN BY TJM	PREPARED BY SMG
CHECKED BY MRB	REVISIONS PER DWT #1 COMMENTS
STEAMBOAT ESQUIAR LP THE ASTRID 2410 SKI TRAIL LANE STORM LATERALS D, E, F PLAN & PROFILES ROUTT COUNTY STEAMBOAT SPRINGS PREPARED UNDER THE DIRECT SUPERVISION OF PRELIMINARY NOT FOR CONSTRUCTION FOR AND ON BEHALF OF BASELINE CORPORATION INITIAL SUBMITTAL 12/22/2022 DRAWING SIZE 24" X 36" SURVEY FIRM LANDMARK, INC SURVEY DATE 06/03/22 JOB NO. C020235 DRAWING NAME 20235 P&P-STORM LATERALS.dwg SHEET 24 OF 68 C22	