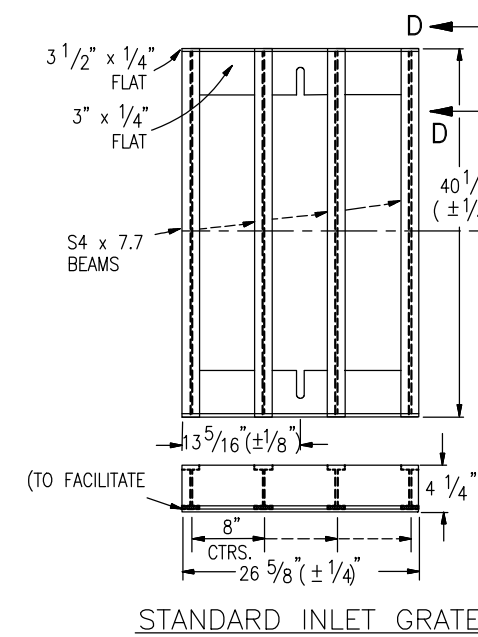
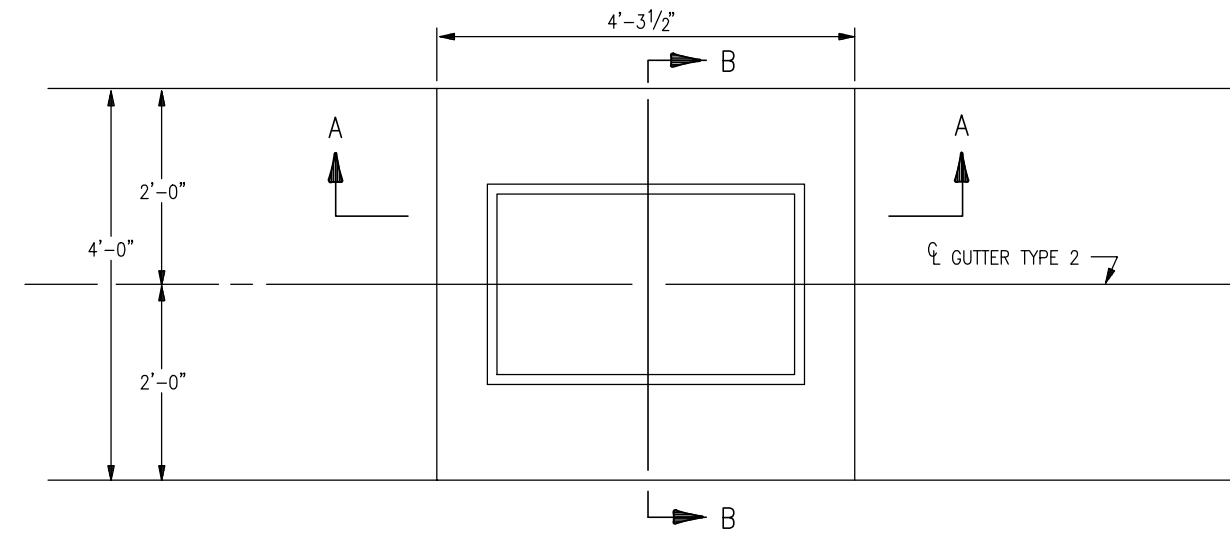


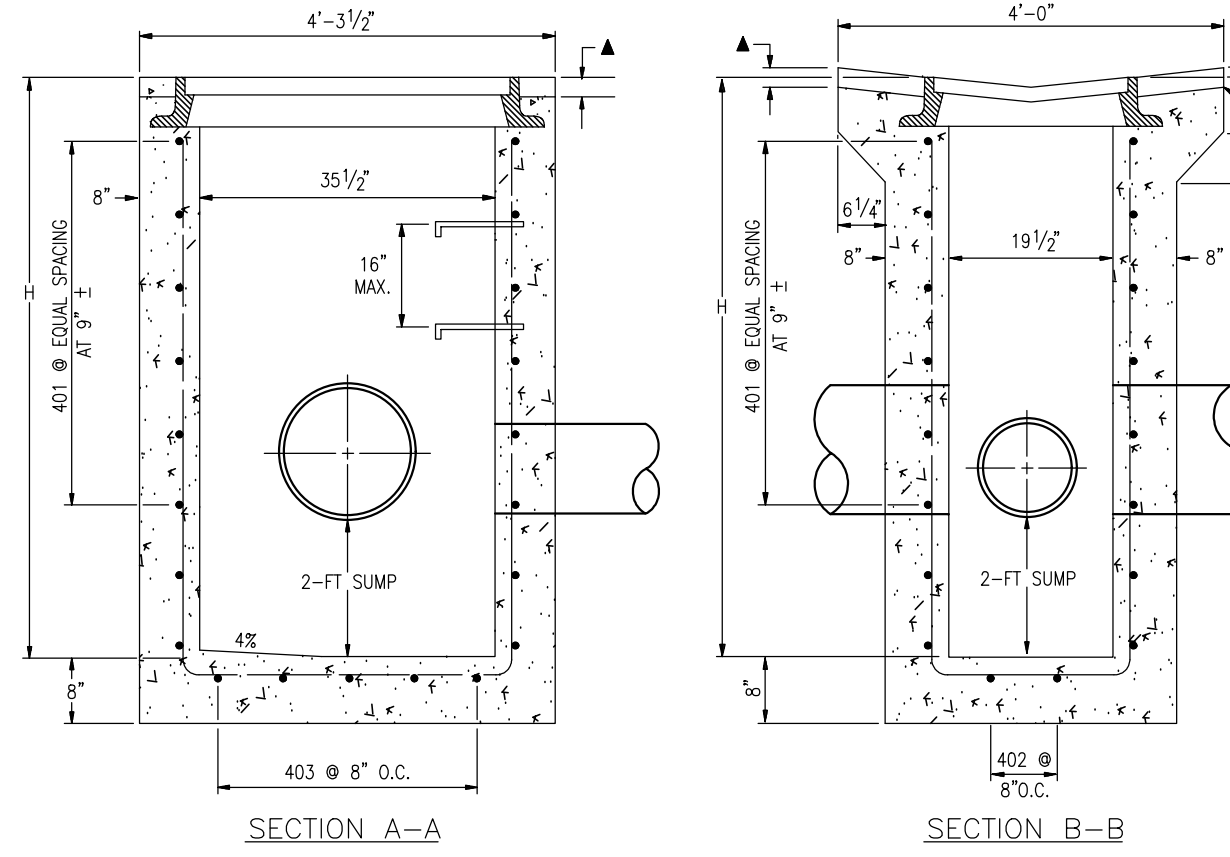
TYPE C INLET



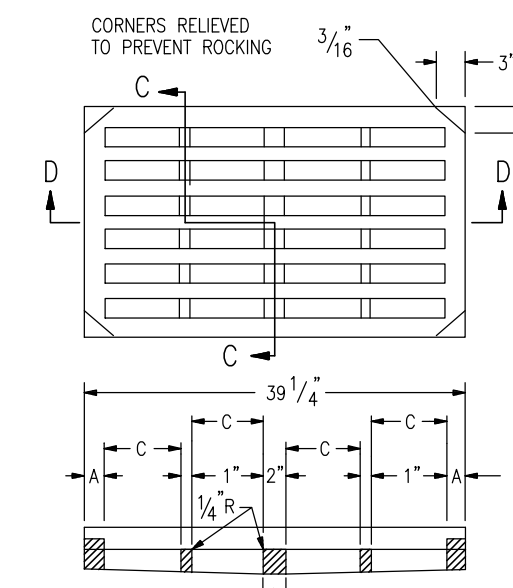
STANDARD INLET GRATE



PLAN OF TYPE 13/16 INLET FOR GUTTER TYPE 2

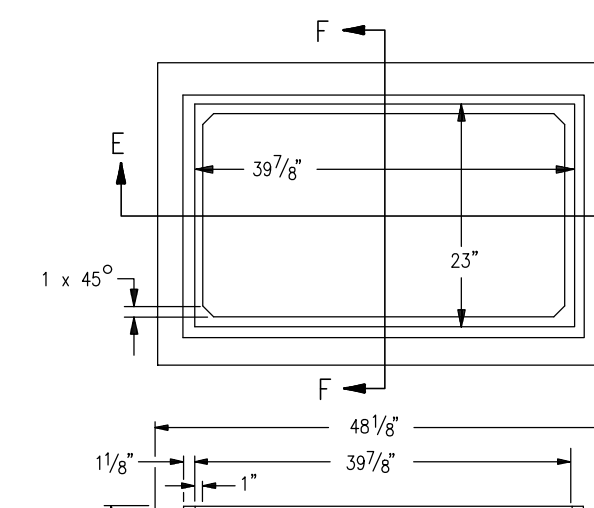


TYPE 13/16 INLET



SECTION C-C

SECTION D-D NO. 13/16 GRATE



SECTION E-E NO. 13/16 GRATING & FRAMES APPROX. WEIGHT 590 LBS.

SECTION F-F

NOTE: SEE PLAN DETAILS FOR LOCATION AND SIZE OF PIPE. WHEN BITUMINOUS MATERIAL IS TO EXTEND TO THE EDGE OF THE GRATING FRAME, CONCRETE MAY BE DERESSED.

- GENERAL NOTES**
- CONCRETE SHALL BE CLASS B. INLET MAY BE CAST-IN-PLACE OR PRECAST.
 - CAST-IN-PLACE CONCRETE WALLS SHALL BE FORMED ON BOTH SIDES.
 - EXPOSED CONCRETE CORNERS SHALL BE CHAMFERED 3/4 IN.
 - EXPOSED CONCRETE CORNERS SHALL BE DEFORMED AND SHALL HAVE A 2 IN. MINIMUM CLEARANCE. ALL REINFORCING BARS SHALL BE EPOXY COATED.
 - STEPS SHALL BE PROVIDED WHEN INLET DIMENSION "H" EXCEEDS 3 FT.-6 IN. AND SHALL BE IN ACCORDANCE WITH AASHTO M 199.
 - ALL GRATES AND FRAMES SHALL BE GRAY OR DUCTILE CAST IRON CONFORMING TO T12.06. GRATES AND FRAMES SHALL BE DESIGNED TO WITHSTAND HS 20 LOADING.

QUANTITIES

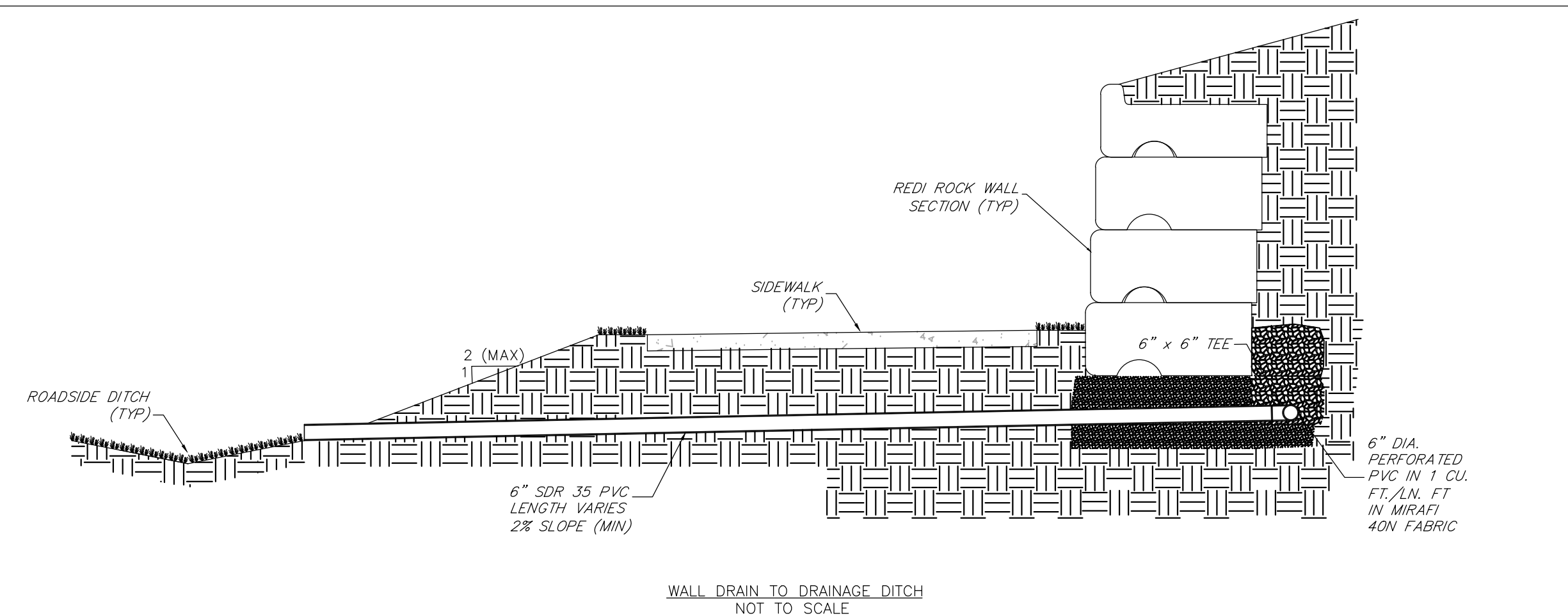
H	CONCRETE CU. YD.	REINFORCING STEEL Ø LB.	NO. OF 401 BARS REQ'D.
3'-0"	1.3	72	4
3'-6"	1.5	76	4
4'-0"	1.6	80	5
4'-6"	1.8	104	6
5'-0"	1.9	109	6
5'-6"	2.1	122	7
6'-0"	2.2	136	8
6'-6"	2.4	141	8
7'-0"	2.5	154	9
7'-6"	2.7	168	10
8'-0"	2.8	173	10
8'-6"	3.0	187	11
9'-0"	3.1	200	12
9'-6"	3.3	205	12
10'-0"	3.4	219	13

Ø INCLUDES 1% FOR OVERRUN. NOTE: CONCRETE QUANTITIES INCLUDE VOLUME OCCUPIED BY PIPE.

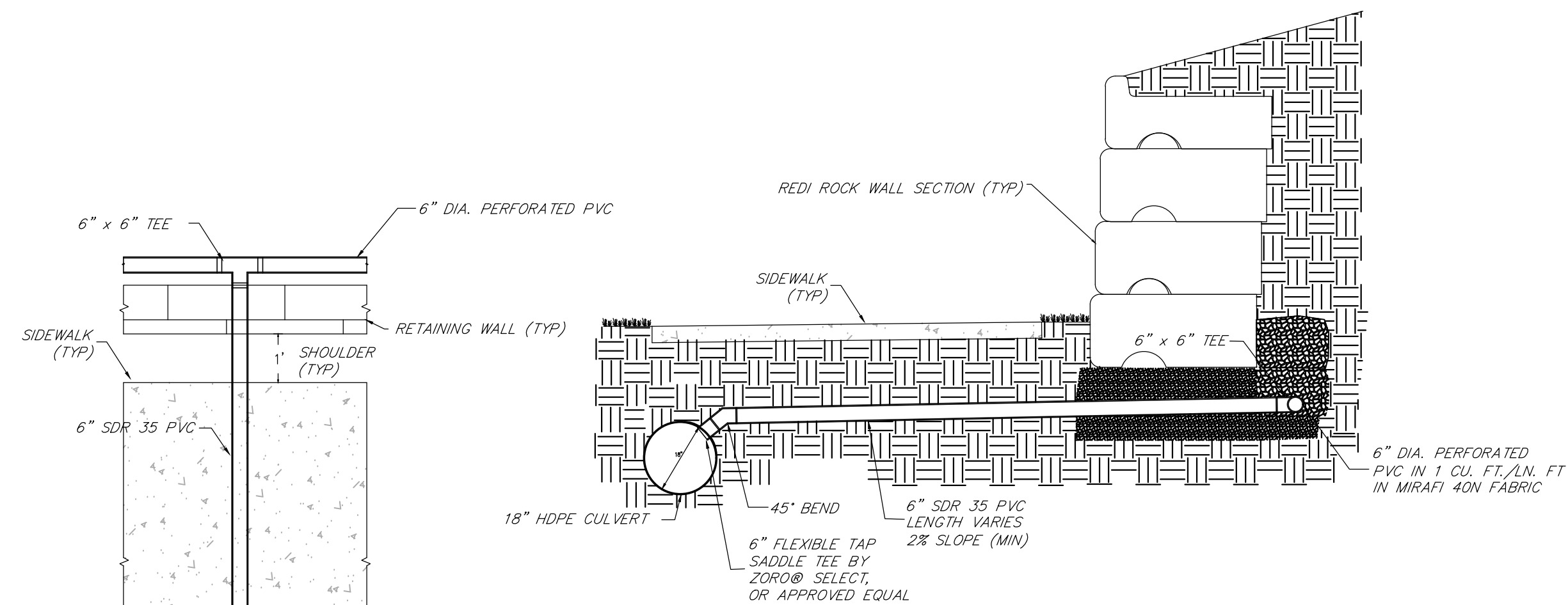
BAR LIST FOR H=3'-0"

MARK	NO. REQ'D.	DIMENSIONS	LENGTH
401	4	3'-6"	2'-2"
402	2	3'-4 1/2"	2'-6 1/2"
403	5	2'-1 1/2"	2'-7"

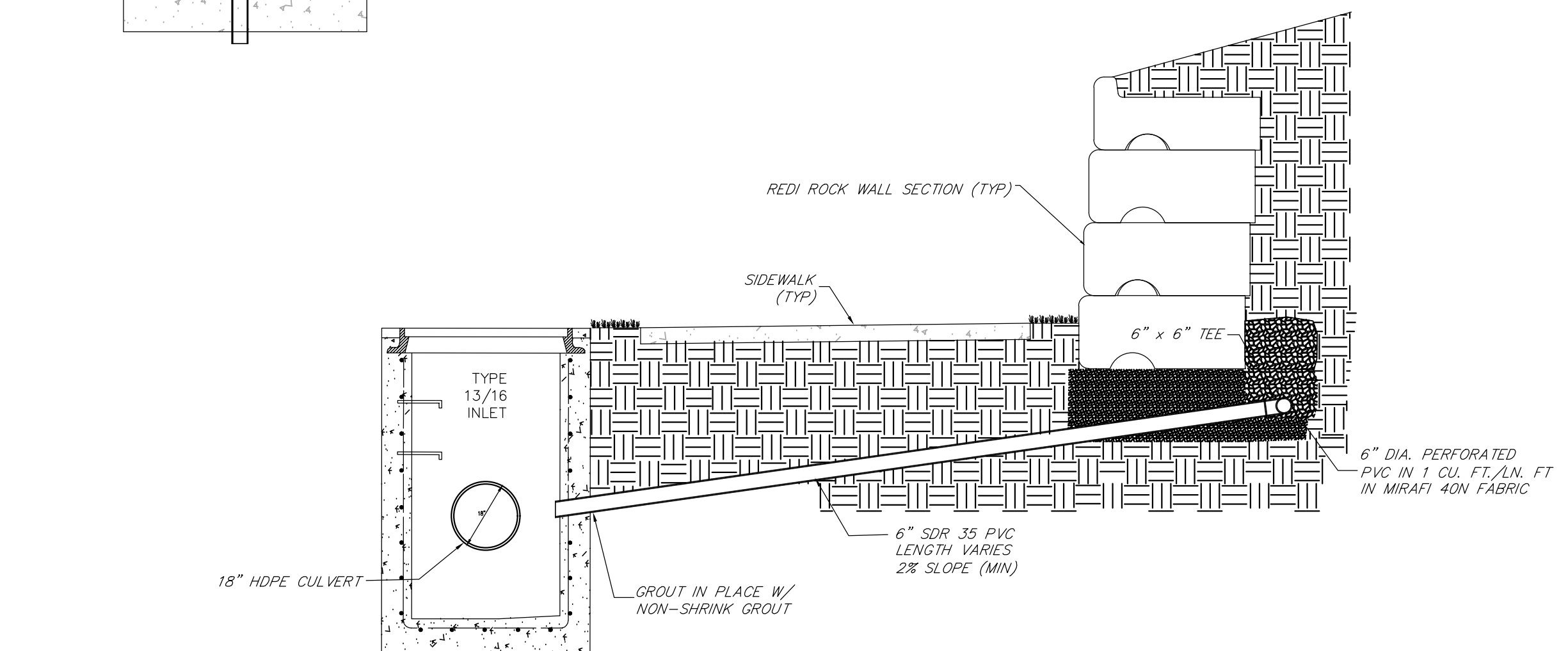
*ADD 6 IN. TO THIS DIMENSION FOR EACH 6 IN. INCREASE OF "H" OVER 3 FT.-0 IN.



WALL DRAIN TO DRAINAGE DITCH NOT TO SCALE



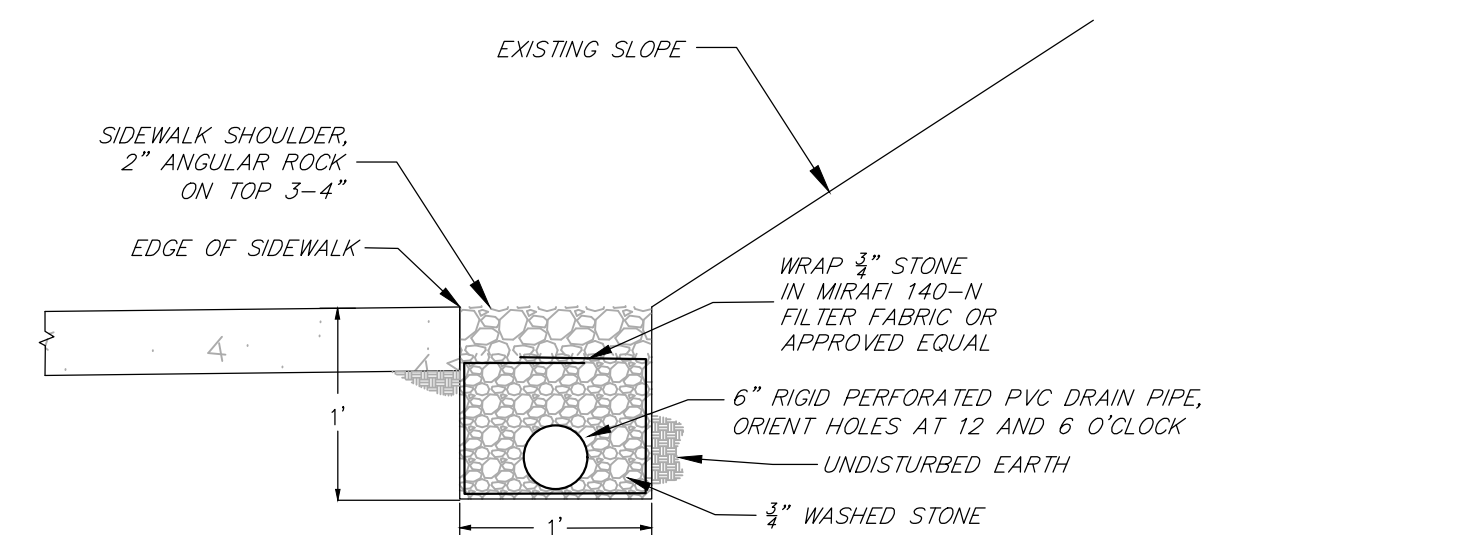
WALL DRAIN TO STORMWATER PIPE NOT TO SCALE



WALL DRAIN TO STORMWATER INLET NOT TO SCALE

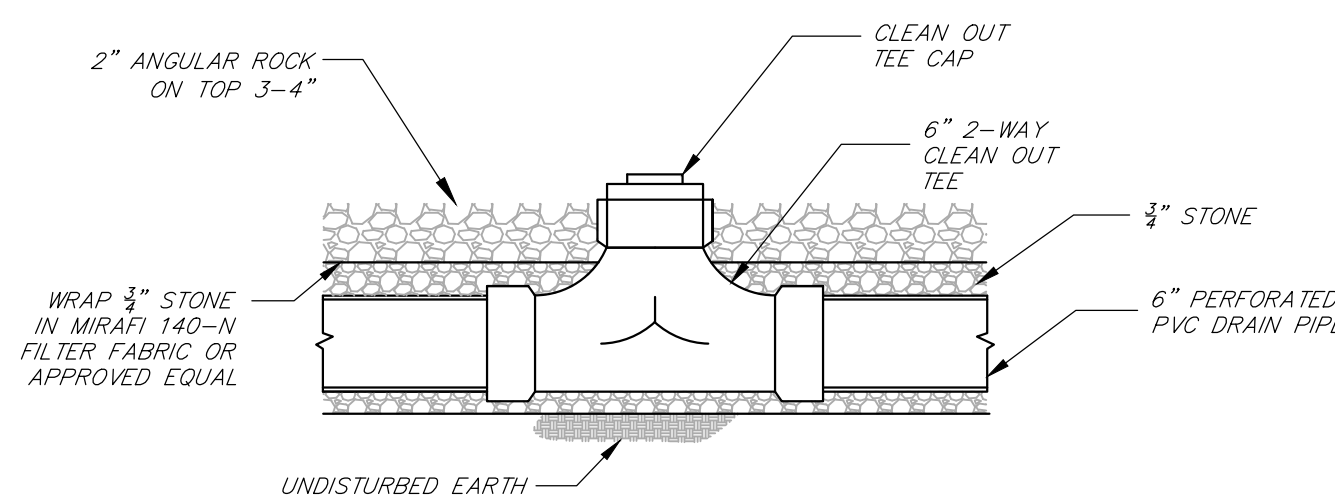
*INSTALLED AT THE FOLLOWING STATIONS: STA 1+73

WALL DRAIN DETAILS N.T.S.

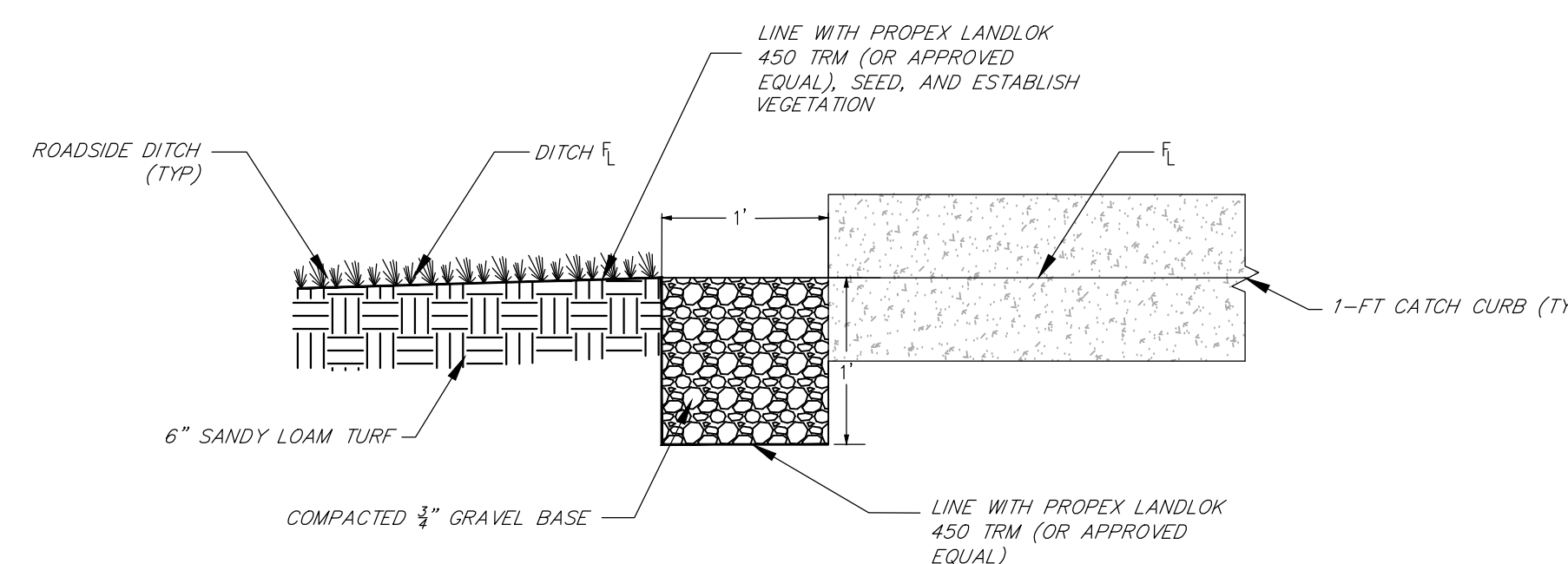


*INSTALL ALONG NORTH EDGE OF SIDEWALK AT THE FOLLOWING STATIONS: STA 5+87 TO STA 17+80 - STA 22+20 TO STA 27+05

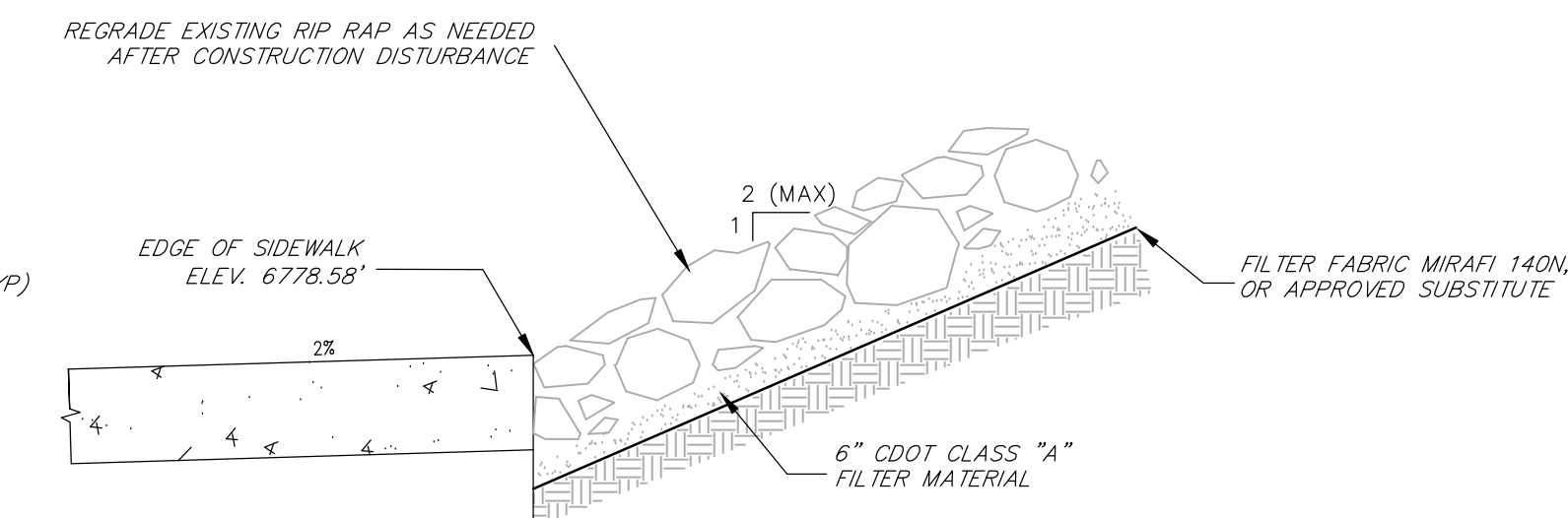
PERVIOUS SIDEWALK SHOULDER FRENCH DRAIN N.T.S.



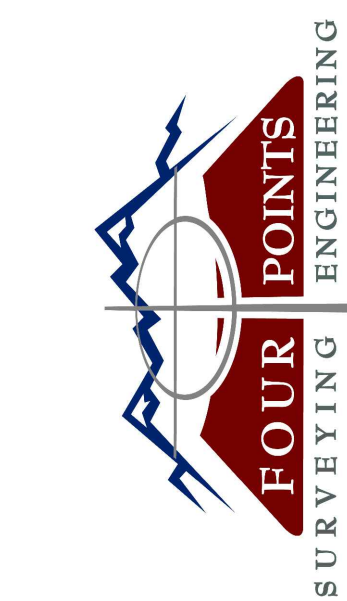
PERVIOUS SIDEWALK SHOULDER FRENCH DRAIN CLEANOUT DETAIL N.T.S.



STANDARD CURB & GUTTER TO ROADSIDE DITCH DETAIL N.T.S.



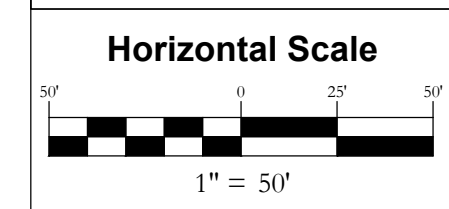
STA 14+40 RIP RAP REGRADING DETAIL N.T.S.



440 S. Lincoln Ave, Suite 4A
P.O. Box 775966
Steamboat Springs, CO 80487
(970)-871-6772
www.fourpointse.com

NO.	DATE	REVISIONS
1	3/13/2023	DR REVIEW & RESPONSE
2	6/16/2023	DR REVIEW & RESPONSE

STEAMBOAT AIRPARK
PRELIMINARY PLAT
LOT 1, WEST ACRES RANCH SUBDIVISION
GLORIA GOSSARD PARKWAY
STEAMBOAT SPRINGS, CO 80487



DATE: 4-22-2022
JOB #: 1670-001
DRAWN BY: MDM/JLW
DESIGN BY: MDM/JLW
REVIEW BY: RL

DRAWING: SIDEWALK DRAINAGE DETAILS
SHEET # PP10