

Godden|Sudik
ARCHITECTS
SEE WHAT COULD BE
303.455.4437
www.goddensudik.com

5975 S. Quebec Street
Suite 250
Centennial, CO 80111

NOT FOR
CONSTRUCTION



1 BUILDING TYPE 1 - LEVELS 2-4
1/8" = 1'-0"

COPPER RIDGE VILLAGE

STEAMBOAT SPRINGS, CO

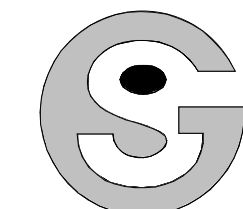
NOT FOR
CONSTRUCTION

DRAWN BY:
CHECKED BY:
ISSUE DATE:
12/07/2021

REVISIONS:

BUILDING TYPE 1
FLOOR PLAN

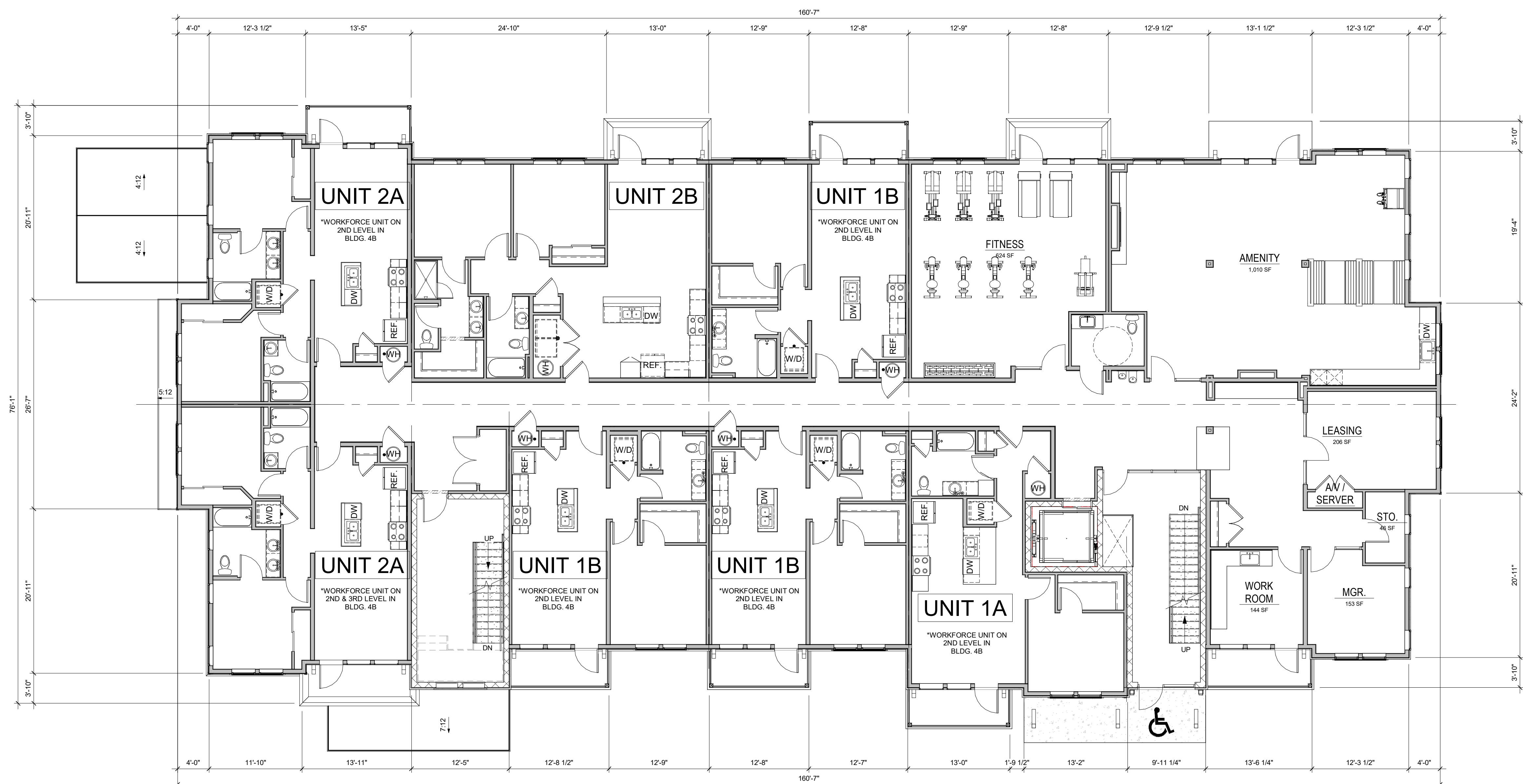
A1.1



Godden|Sudik
ARCHITECTS
SEE WHAT COULD BE
303.455.4437
www.goddensudik.com

5975 S. Quebec Street
Suite 250
Centennial, CO 80111

NOT FOR
CONSTRUCTION



1 BUILDING 4B - 2ND LEVEL
1/8" = 1'-0"

COPPER RIDGE VILLAGE
STEAMBOAT SPRINGS, CO

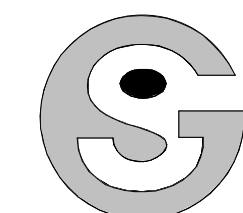
NOT FOR
CONSTRUCTION

DRAWN BY:
CHECKED BY:
ISSUE DATE:
12/07/2021

REVISIONS:

BUILDING 4 (TYPE 1B) FLOOR PLAN

A1.2



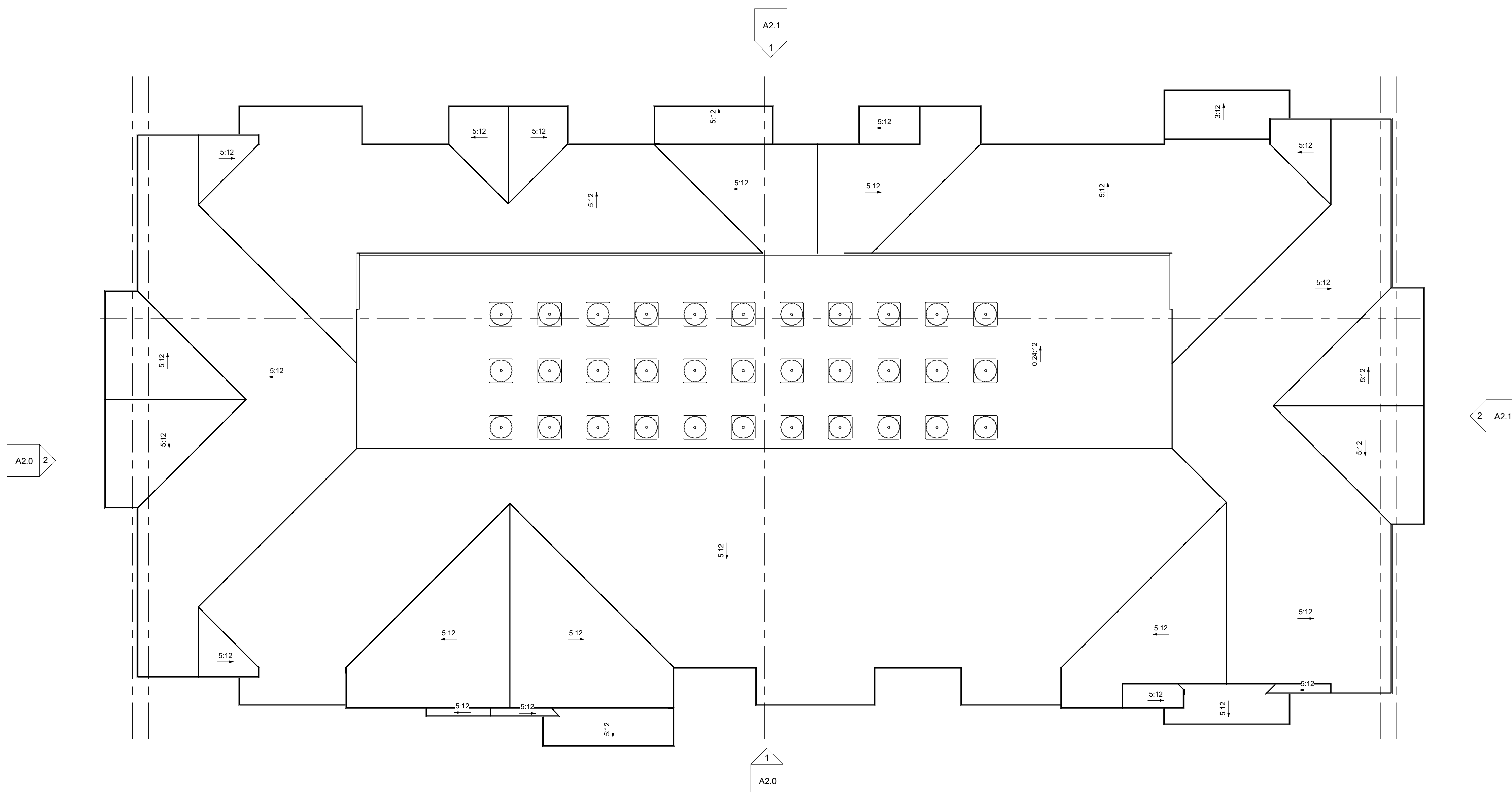
Godden|Sudik
ARCHITECTS
SEE WHAT COULD BE
303.455.4437
www.goddensudik.com

5975 S. Quebec Street
Suite 250
Centennial, CO 80111

NOT FOR
CONSTRUCTION

COPPER RIDGE VILLAGE

STEAMBOAT SPRINGS, CO



1 BUILDING 1A-ROOF PLAN
1/8" = 1'-0"

DRAWN BY:

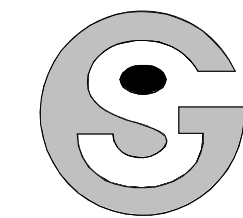
CHECKED BY:

ISSUE DATE:
12/07/2021

REVISIONS:

BUILDING TYPE 1A
ROOF PLAN

A1.3



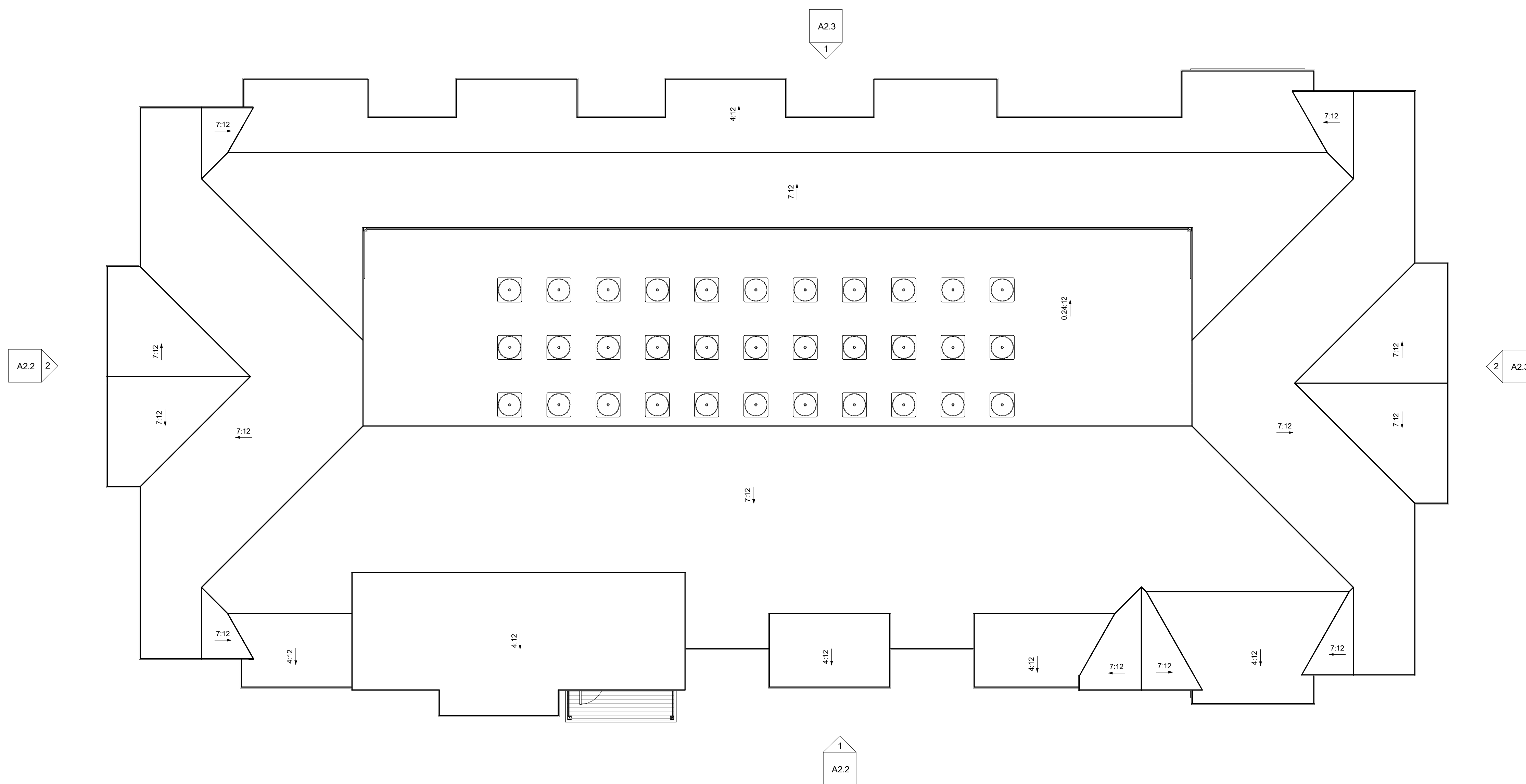
Godden|Sudik
ARCHITECTS
SEE WHAT COULD BE
303.455.4437
www.goddensudik.com

5975 S. Quebec Street
Suite 250
Centennial, CO 80111

NOT FOR
CONSTRUCTION

COPPER RIDGE VILLAGE

STEAMBOAT SPRINGS, CO



1 BUILDING 1B-ROOF PLAN
1/8" = 1'-0"

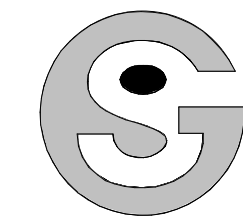
NOT FOR
CONSTRUCTION

DRAWN BY:
CHECKED BY:
ISSUE DATE:
12/07/2021

REVISIONS:

BUILDING TYPE 1B
ROOF PLAN

A1.4



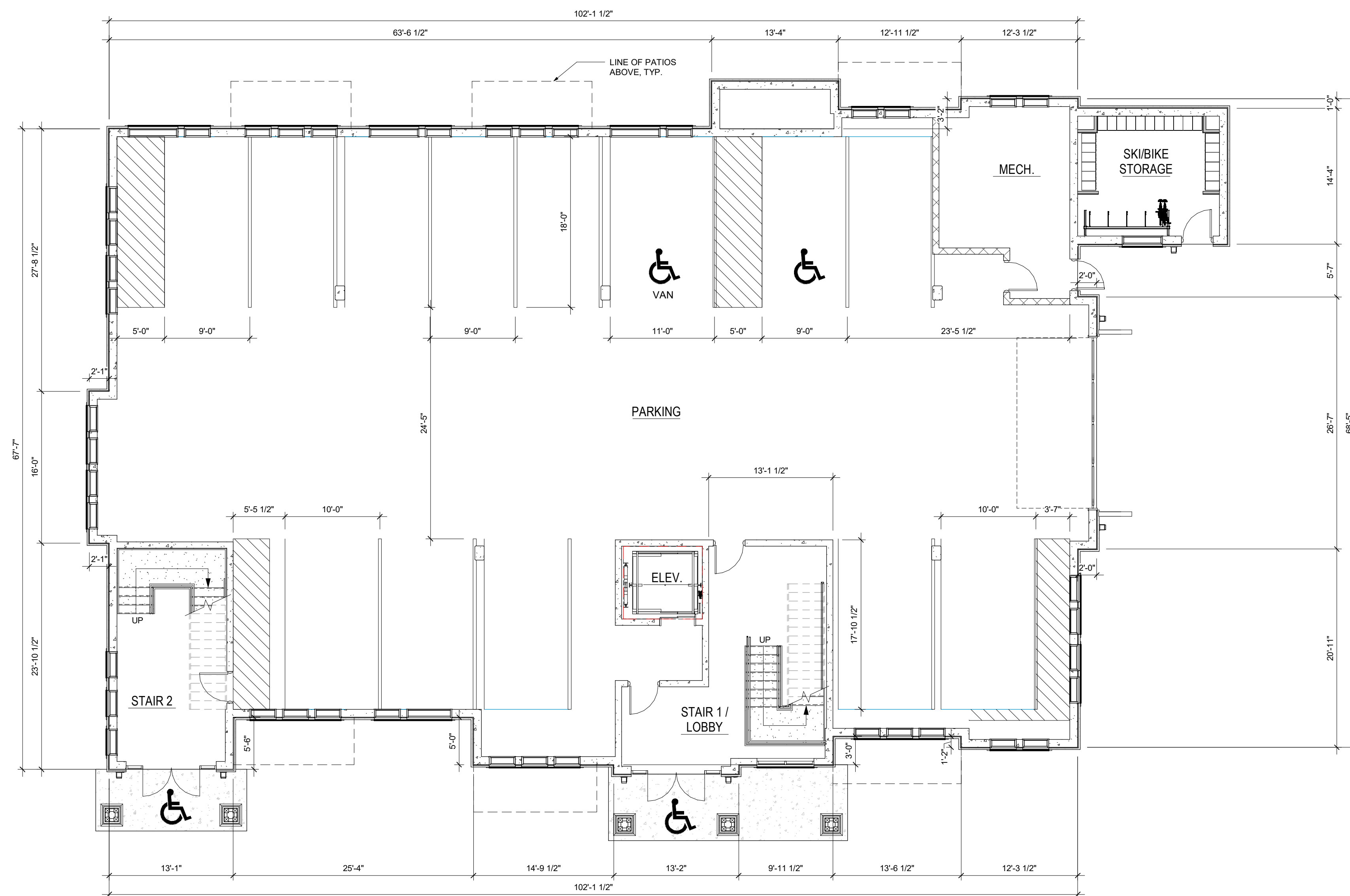
Godden|Sudik
ARCHITECTS
SEE WHAT COULD BE
303.455.4437
www.goddensudik.com

5975 S. Quebec Street
Suite 250
Centennial, CO 80111

NOT FOR
CONSTRUCTION

COPPER RIDGE VILLAGE

STEAMBOAT SPRINGS, CO



1 BUILDING 2 - LEVEL 1
1/8" = 1'-0"

DRAWN BY:

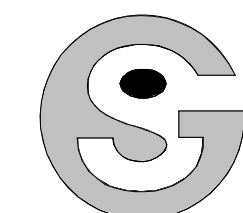
CHECKED BY:

ISSUE DATE:
12/07/2021

REVISIONS:

BUILDING TYPE 2
FLOOR PLAN

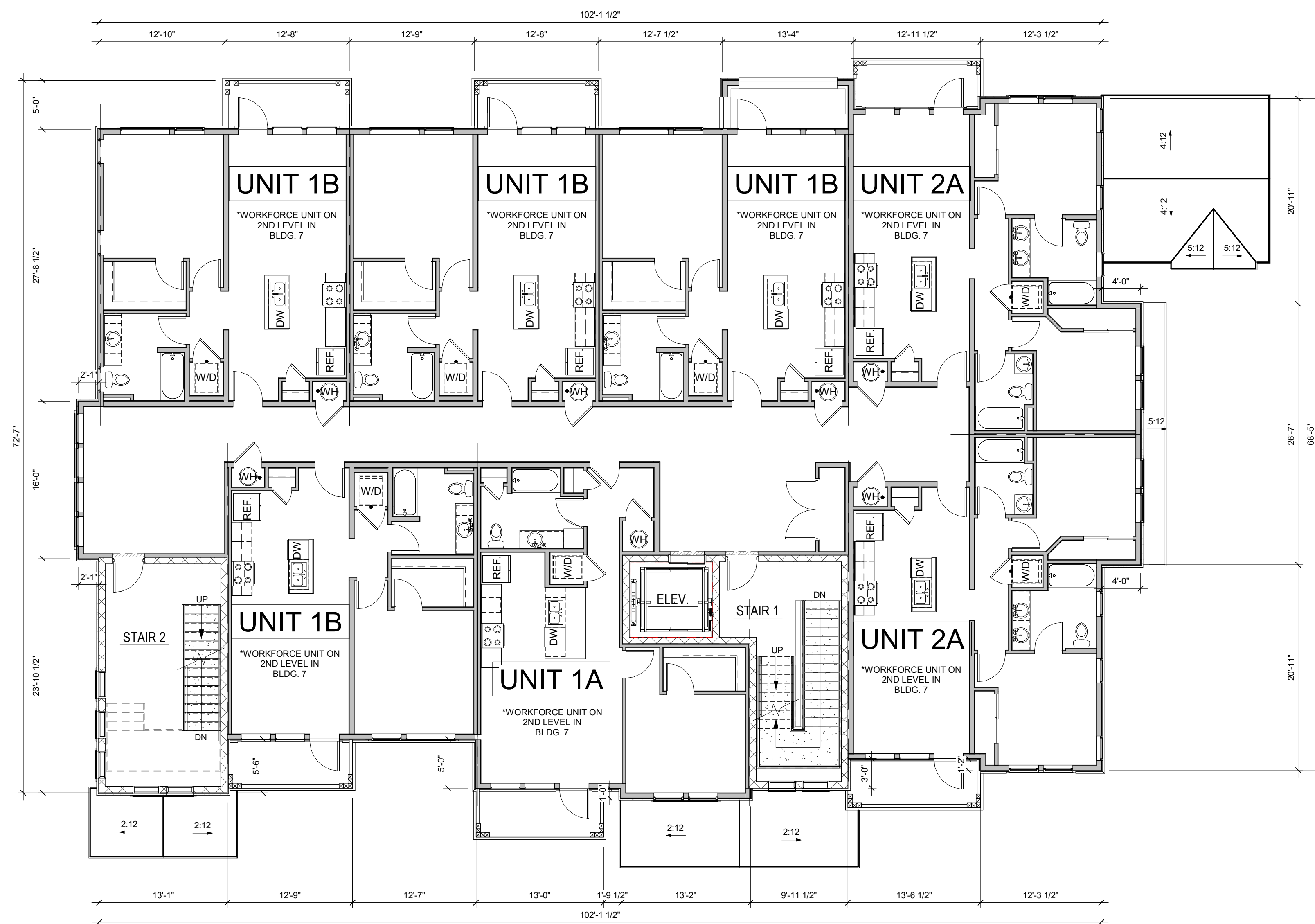
A1.5



Godden|Sudik
ARCHITECTS
SEE WHAT COULD BE
303.455.4437
www.goddensudik.com

5975 S. Quebec Street
Suite 250
Centennial, CO 80111

NOT FOR
CONSTRUCTION



1 BUILDING 2 - LEVEL 2-4
1/8" = 1'-0"

COPPER RIDGE VILLAGE

STEAMBOAT SPRINGS, CO

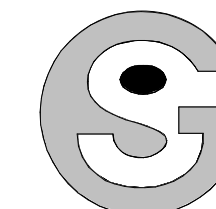
NOT FOR
CONSTRUCTION

DRAWN BY:
CHECKED BY:
ISSUE DATE:
12/07/2021

REVISIONS:

BUILDING TYPE 2
FLOOR PLAN

A1.6
© Copyright 2021
Godden | Sudik Architects & Planners, Inc.



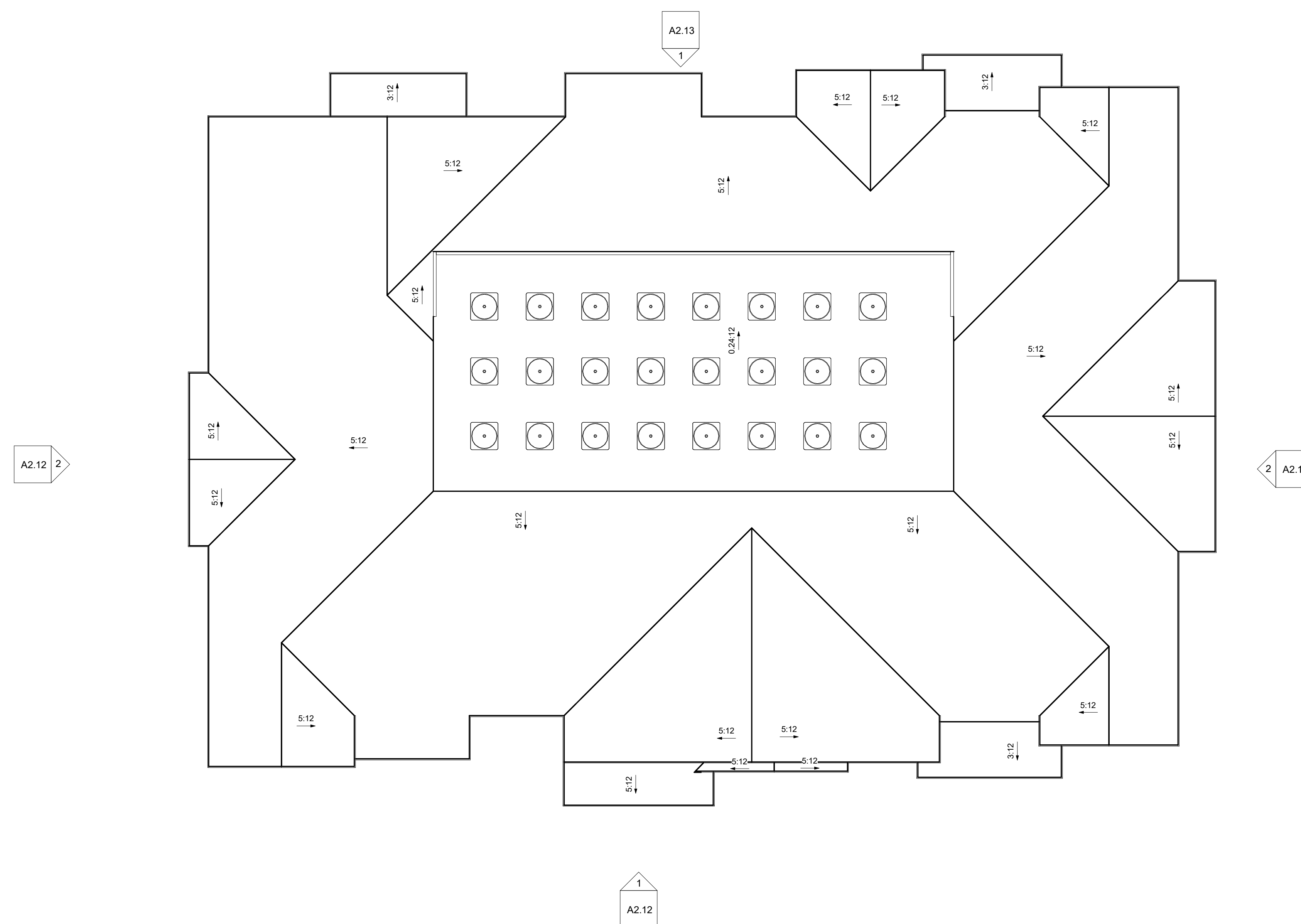
Godden|Sudik
 ARCHITECTS
 SEE WHAT COULD BE
 303.455.4437
 www.goddensudik.com

5975 S. Quebec Street
 Suite 250
 Centennial, CO 80111

NOT FOR
 CONSTRUCTION

COPPER RIDGE VILLAGE

STEAMBOAT SPRINGS, CO



1 BUILDING 2 - ROOF PLAN
 1/8" = 1'-0"

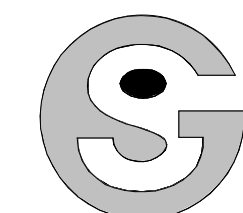
NOT FOR
 CONSTRUCTION

DRAWN BY:
 CHECKED BY:
 ISSUE DATE:
 12/07/2021

REVISIONS:

BUILDING TYPE 2
 ROOF PLAN

A1.7



Godden|Sudik
ARCHITECTS
SEE WHAT COULD BE
303.455.4437
www.goddensudik.com

5975 S. Quebec Street
Suite 250
Centennial, CO 80111

NOT FOR
CONSTRUCTION

COPPER RIDGE VILLAGE
STEAMBOAT SPRINGS, CO



TRANSPARENCY CALCS:
FLOOR AREA: 1499 SF
REQUIRED: 375 SF
PROVIDED: 519 SF
PERCENTAGE: 34%

TRANSPARENCY CALCS:
FLOOR AREA: 1499 SF
REQUIRED: 375 SF
PROVIDED: 550 SF
PERCENTAGE: 37%

TRANSPARENCY CALCS:
FLOOR AREA: 1499 SF
REQUIRED: 375 SF
PROVIDED: 550 SF
PERCENTAGE: 37%

TRANSPARENCY CALCS:
FLOOR AREA: 1030 SF
REQUIRED: 258 SF
PROVIDED: 328 SF
PERCENTAGE: 32%

BUILDING 1A - BUILDING HEIGHTS - FRONT ELEVATION			
	BLDG 1	BLDG 3	BLDG 5
OVERALL BLDG HGT.	53'-7 3/4"	51'-3"	77'-1"
GREATEST PLATE HGT.	41'-0"	38'-7"	64'-5"
LOWEST PLATE HGT.	36'-1"	34'-10"	34'-4 1/2"
AVERAGE PLATE HGT.	38'-6 1/2"	36'-8 1/2"	49'-4 3/4"

1 BUILDING 1 (TYPE 1A) - FRONT ELEVATION
1/8" = 1'-0"

BUILDING 1A - BUILDING HEIGHTS - LEFT ELEVATION			
	BLDG 1	BLDG 3	BLDG 5
OVERALL BLDG HGT.	49'-1"	57'-6 1/2"	77'-1 1/2"
GREATEST PLATE HGT.	36'-5"	44'-11"	64'-6"
LOWEST PLATE HGT.	23'-5 1/2"	37'-0"	49'-0 1/2"
AVERAGE PLATE HGT.	29'-11 1/4"	40'-11 1/2"	59'-9 1/4"



TRANSPARENCY CALCS:
FLOOR AREA: 627 SF
REQUIRED: 157 SF
PROVIDED: 160 SF
PERCENTAGE: 25.5%

TRANSPARENCY CALCS:
FLOOR AREA: 627 SF
REQUIRED: 157 SF
PROVIDED: 160 SF
PERCENTAGE: 25.5%

TRANSPARENCY CALCS:
FLOOR AREA: 627 SF
REQUIRED: 157 SF
PROVIDED: 160 SF
PERCENTAGE: 25.5%

TRANSPARENCY CALCS:
FLOOR AREA: 421 SF
REQUIRED: 106 SF
PROVIDED: 61 SF
PERCENTAGE: 15%

COLOR LEGEND SCHEME A*	
A	BODY COLOR 1: MANUF: SHERWIN WILLIAMS, OR SIM. COLOR: VIRTUAL TAUPE SW 7039
B	BODY COLOR 2: MANUF: SHERWIN WILLIAMS, OR SIM. COLOR: URBANE BRONZE SW 7048
C	STONE: MANUF: CORONADO, OR SIM. COLOR: IDAHO DRYSTACK - ANTIQUE BUFF
D	TRIM: MANUF: SHERWIN WILLIAMS, OR SIM. COLOR: IRON GATE SW 2926
E	ROOF: MANUF: CERTAINTEED, OR SIM. COLOR: LANDMARK - HEATHER BLEND

*ALL COLOR INFORMATION IS APPROXIMATE. MANUFACTURER AND FINAL TINT SUBJECT TO CHANGE

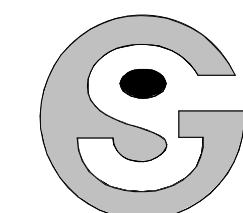
2 BUILDING 1 (TYPE 1A) - LEFT ELEVATION
1/8" = 1'-0"

DRAWN BY:
CHECKED BY:
ISSUE DATE:
12/07/2021

REVISIONS:

NO.	DESCRIPTION

BLDG 1 (TYPE 1A) - ELEVATIONS



Godden|Sudik
ARCHITECTS
SEE WHAT COULD BE
303.455.4437
www.goddensudik.com

5975 S. Quebec Street
Suite 250
Centennial, CO 80111

NOT FOR
CONSTRUCTION

COPPER RIDGE VILLAGE

STEAMBOAT SPRINGS, CO



TRANSPARENCY CALCS:
FLOOR AREA: 1392 SF
REQUIRED: 348 SF
PROVIDED: 536 SF
PERCENTAGE: 38%

TRANSPARENCY CALCS:
FLOOR AREA: 1392 SF
REQUIRED: 348 SF
PROVIDED: 536 SF
PERCENTAGE: 38%

TRANSPARENCY CALCS:
FLOOR AREA: 1392 SF
REQUIRED: 348 SF
PROVIDED: 536 SF
PERCENTAGE: 38%

BUILDING 1A - BUILDING HEIGHTS - REAR ELEVATION			
	BLDG 1	BLDG 3	BLDG 5
OVERALL BLDG HGT.	41'-4"	58'-8 1/2"	60'-6 1/2"
GREATEST PLATE HGT.	28'-8 1/2"	46'-1"	47'-10 1/2"
LOWEST PLATE HGT.	23'-3"	41'-8 1/2"	25'-8 1/2"
AVERAGE PLATE HGT.	25'-11 3/4"	43'-10 3/4"	39'-11 3/4"

BUILDING 1A - BUILDING HEIGHTS - RIGHT ELEVATION			
	BLDG 1	BLDG 3	BLDG 5
OVERALL BLDG HGT.	51'-5"	57'-6"	47'-0 1/2"
GREATEST PLATE HGT.	38'-9"	44'-10 1/2"	34'-5"
LOWEST PLATE HGT.	27'-7"	38'-7"	25'-8"
AVERAGE PLATE HGT.	33'-2"	41'-8 3/4"	30'-0 1/2"

1 BUILDING 1 (TYPE 1A) - REAR ELEVATION
1/8" = 1'-0"



TRANSPARENCY CALCS:
FLOOR AREA: 590 SF
REQUIRED: 148 SF
PROVIDED: 160 SF
PERCENTAGE: 27%

TRANSPARENCY CALCS:
FLOOR AREA: 590 SF
REQUIRED: 148 SF
PROVIDED: 160 SF
PERCENTAGE: 27%

TRANSPARENCY CALCS:
FLOOR AREA: 590 SF
REQUIRED: 148 SF
PROVIDED: 160 SF
PERCENTAGE: 27%

COLOR LEGEND SCHEME A*	
A	BODY COLOR 1: MANUF: SHERWIN WILLIAMS, OR SIM. COLOR: VIRTUAL TAUPE SW 7039
B	BODY COLOR 2: MANUF: SHERWIN WILLIAMS, OR SIM. COLOR: URBANE BRONZE SW 7048
C	STONE: MANUF: CORONADO, OR SIM. COLOR: IDAHO DRYSTACK - ANTIQUE BUFF
D	TRIM: MANUF: SHERWIN WILLIAMS, OR SIM. COLOR: IRON GATE SW 2926
E	ROOF: MANUF: CERTAINTEED, OR SIM. COLOR: LANDMARK - HEATHER BLEND

*ALL COLOR INFORMATION IS APPROXIMATE. MANUFACTURER AND FINAL TINT SUBJECT TO CHANGE

2 BUILDING 1 (TYPE 1A) - RIGHT ELEVATION
1/8" = 1'-0"

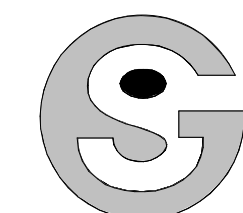
DRAWN BY:
CHECKED BY:
ISSUE DATE:
12/07/2021

REVISIONS:

NO.	DESCRIPTION

BLDG 1 (TYPE 1A) - ELEVATIONS

A2.1



NOT FOR
CONSTRUCTION

COPPER RIDGE VILLAGE
STEAMBOAT SPRINGS, CO



TRANSPARENCY CALCS:
FLOOR AREA: 1499 SF
REQUIRED: 375 SF
PROVIDED: 464 SF
PERCENTAGE: 31%

TRANSPARENCY CALCS:
FLOOR AREA: 1499 SF
REQUIRED: 375 SF
PROVIDED: 464 SF
PERCENTAGE: 31%

TRANSPARENCY CALCS:
FLOOR AREA: 1499 SF
REQUIRED: 375 SF
PROVIDED: 627 SF
PERCENTAGE: 42%

BUILDING 1B - BUILDING HEIGHTS - FRONT ELEVATION			
	BLDG 2	BLDG 4	BLDG 6
OVERALL BLDG HGT	65'-4"	47'-8 1/2"	46'-5 1/2"
GREATEST PLATE HGT.	49'-2 1/2"	31'-7"	30'-4"
LOWEST PLATE HGT.	36'-11"	19'-3"	26'-8"
AVERAGE PLATE HGT.	43'-0 3/4"	25'-5"	28'-6"

1 BUILDING 2 (TYPE 1B) - FRONT ELEVATION
1/8" = 1'-0"

BUILDING 1B - BUILDING HEIGHTS - LEFT ELEVATION			
	BLDG 2	BLDG 4	BLDG 6
OVERALL BLDG HGT	63'-10 1/2"	47'-10 1/2"	43'-0"
GREATEST PLATE HGT.	47'-9"	31'-9"	26'-10 1/2"
LOWEST PLATE HGT.	3'-2"	9'-11 1/2"	24'-3"
AVERAGE PLATE HGT.	41'-11 1/2"	20'-10 1/4"	25'-6 3/4"



TRANSPARENCY CALCS:
FLOOR AREA: 590 SF
REQUIRED: 148 SF
PROVIDED: 160 SF
PERCENTAGE: 27%

TRANSPARENCY CALCS:
FLOOR AREA: 590 SF
REQUIRED: 148 SF
PROVIDED: 160 SF
PERCENTAGE: 27%

TRANSPARENCY CALCS:
FLOOR AREA: 590 SF
REQUIRED: 148 SF
PROVIDED: 160 SF
PERCENTAGE: 27%

TRANSPARENCY CALCS:
FLOOR AREA: 420 SF
REQUIRED: 105 SF
PROVIDED: 61 SF
PERCENTAGE: 15%

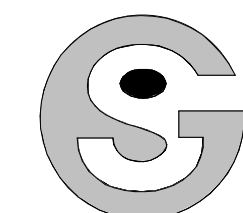
COLOR LEGEND SCHEME B*

F	BODY COLOR 1: MANUF: SHERWIN WILLIAMS, OR SIM. COLOR: WARM PEWTER SW 9572
G	BODY COLOR 2: MANUF: SHERWIN WILLIAMS, OR SIM. COLOR: PEWTER GREEN SW 6208
H	STONE: MANUF: CORONADO, OR SIM. COLOR: EASTERN MTN. LEDGE - HURON
I	TRIM: MANUF: SHERWIN WILLIAMS, OR SIM. COLOR: CAVIAR SW 6990
J	ROOF: MANUF: CERTAINTEED, OR SIM. COLOR: LANDMARK - PEWTERWOOD

*ALL COLOR INFORMATION IS APPROXIMATE. MANUFACTURER AND FINAL TINT SUBJECT TO CHANGE

2 BUILDING 2 (TYPE 1B) - LEFT ELEVATION
1/8" = 1'-0"

DRAWN BY:
CHECKED BY:
ISSUE DATE:
12/07/2021
REVISIONS:



NOT FOR
CONSTRUCTION

COPPER RIDGE VILLAGE
STEAMBOAT SPRINGS, CO



TRANSPARENCY CALCS:
FLOOR AREA: 1304 SF
REQUIRED: 326 SF
PROVIDED: 479 SF
PERCENTAGE: 37%

TRANSPARENCY CALCS:
FLOOR AREA: 1304 SF
REQUIRED: 326 SF
PROVIDED: 479 SF
PERCENTAGE: 37%

TRANSPARENCY CALCS:
FLOOR AREA: 1304 SF
REQUIRED: 326 SF
PROVIDED: 479 SF
PERCENTAGE: 37%

1 BUILDING 2 (TYPE 1B) - REAR ELEVATION
1/8" = 1'-0"

BUILDING 1B - BUILDING HEIGHTS - REAR ELEVATION			
	BLDG 2	BLDG 4	BLDG 6
OVERALL BLDG HGT.	53'-4 1/2"	31'-0 1/2"	45'-9 1/2"
GREATEST PLATE HGT.	37'-3"	14'-1 1/4"	29'-8"
LOWEST PLATE HGT.	33'-6"	9'-3 1/2"	24'-3"
AVERAGE PLATE HGT.	35'-4 1/2"	12'-1 1/4"	26'-11 1/2"

BUILDING 1B - BUILDING HEIGHTS - RIGHT ELEVATION			
	BLDG 2	BLDG 4	BLDG 6
OVERALL BLDG HGT.	53'-1 1/4"	35'-2"	44'-0 1/2"
GREATEST PLATE HGT.	37'-9 1/2"	19'-0 1/2"	18'-9 1/2"
LOWEST PLATE HGT.	36'-5"	14'-1 1/4"	15'-2"
AVERAGE PLATE HGT.	37'-11 1/4"	16'-11 3/4"	16'-11 3/4"

COLOR LEGEND SCHEME B*

- BODY COLOR 1:**
MANUF: SHERWIN WILLIAMS, OR SIM.
COLOR: WARM PEWTER SW 9572
- BODY COLOR 2:**
MANUF: SHERWIN WILLIAMS, OR SIM.
COLOR: PEWTER GREEN SW 6208
- STONE:**
MANUF: CORONADO, OR SIM.
COLOR: EASTERN MTN. LEDGE - HURON
- TRIM:**
MANUF: SHERWIN WILLIAMS, OR SIM.
COLOR: CAVIAR SW 6990
- ROOF:**
MANUF: CERTAINTED, OR SIM.
COLOR: LANDMARK - PEWTERWOOD

*ALL COLOR INFORMATION IS APPROXIMATE. MANUFACTURER AND FINAL TINT SUBJECT TO CHANGE

TRANSPARENCY CALCS:
FLOOR AREA: 590 SF
REQUIRED: 148 SF
PROVIDED: 160 SF
PERCENTAGE: 27%

TRANSPARENCY CALCS:
FLOOR AREA: 590 SF
REQUIRED: 148 SF
PROVIDED: 160 SF
PERCENTAGE: 27%

TRANSPARENCY CALCS:
FLOOR AREA: 590 SF
REQUIRED: 148 SF
PROVIDED: 160 SF
PERCENTAGE: 27%

TRANSPARENCY CALCS:
FLOOR AREA: 309 SF
REQUIRED: 78 SF
PROVIDED: 58 SF
PERCENTAGE: 19%

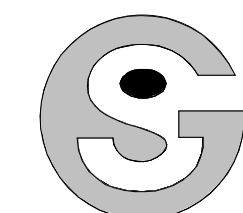


2 BUILDING 2 (TYPE 1B) - RIGHT ELEVATION
1/8" = 1'-0"

DRAWN BY:
CHECKED BY:
ISSUE DATE:
12/07/2021
REVISIONS:

BLDG 2 (TYPE 1B) -
ELEVATIONS

A2.3



NOT FOR
CONSTRUCTION

COPPER RIDGE VILLAGE
STEAMBOAT SPRINGS, CO



TRANSPARENCY CALCS:
FLOOR AREA: 1499 SF
REQUIRED: 375 SF
PROVIDED: 519 SF
PERCENTAGE: 34%

TRANSPARENCY CALCS:
FLOOR AREA: 1499 SF
REQUIRED: 375 SF
PROVIDED: 550 SF
PERCENTAGE: 37%

TRANSPARENCY CALCS:
FLOOR AREA: 1499 SF
REQUIRED: 375 SF
PROVIDED: 550 SF
PERCENTAGE: 37%

BUILDING 1A - BUILDING HEIGHTS - FRONT ELEVATION			
	BLDG 1	BLDG 3	BLDG 5
OVERALL BLDG HGT.	53'-7 3/4"	51'-3"	77'-1"
GREATEST PLATE HGT.	41'-0"	38'-7"	64'-5"
LOWEST PLATE HGT.	36'-1"	34'-10"	34'-4 1/2"
AVERAGE PLATE HGT.	38'-6 1/2"	36'-8 1/2"	49'-4 3/4"

BUILDING 1A - BUILDING HEIGHTS - LEFT ELEVATION			
	BLDG 1	BLDG 3	BLDG 5
OVERALL BLDG HGT.	49'-1"	57'-6 1/2"	77'-1 1/2"
GREATEST PLATE HGT.	36'-5"	44'-11"	64'-6"
LOWEST PLATE HGT.	23'-5 1/2"	37'-0"	49'-0 1/2"
AVERAGE PLATE HGT.	29'-11 1/4"	40'-11 1/2"	59'-9 1/4"

1 BUILDING 3 (TYPE 1A) - FRONT ELEVATION
1/8" = 1'-0"



TRANSPARENCY CALCS:
FLOOR AREA: 627 SF
REQUIRED: 157 SF
PROVIDED: 160 SF
PERCENTAGE: 25.5%

TRANSPARENCY CALCS:
FLOOR AREA: 627 SF
REQUIRED: 157 SF
PROVIDED: 160 SF
PERCENTAGE: 25.5%

TRANSPARENCY CALCS:
FLOOR AREA: 627 SF
REQUIRED: 157 SF
PROVIDED: 160 SF
PERCENTAGE: 25.5%

TRANSPARENCY CALCS:
FLOOR AREA: 421 SF
REQUIRED: 106 SF
PROVIDED: 61 SF
PERCENTAGE: 15%

COLOR LEGEND SCHEME A*	
A	BODY COLOR 1: MANUF: SHERWIN WILLIAMS, OR SIM. COLOR: VIRTUAL TAUPE SW 7039
B	BODY COLOR 2: MANUF: SHERWIN WILLIAMS, OR SIM. COLOR: URBANE BRONZE SW 7048
C	STONE: MANUF: CORONADO, OR SIM. COLOR: IDAHO DRYSTACK - ANTIQUE BUFF
D	TRIM: MANUF: SHERWIN WILLIAMS, OR SIM. COLOR: IRON GATE SW 2926
E	ROOF: MANUF: CERTAINTEED, OR SIM. COLOR: LANDMARK - HEATHER BLEND

*ALL COLOR INFORMATION IS APPROXIMATE. MANUFACTURER AND FINAL TINT SUBJECT TO CHANGE

2 BUILDING 3 (TYPE 1A) - LEFT ELEVATION
1/8" = 1'-0"

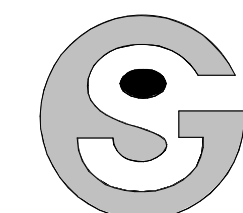
NOT FOR
CONSTRUCTION

DRAWN BY:
CHECKED BY:
ISSUE DATE:
12/07/2021

REVISIONS:

BLDG 3 (TYPE 1A) - ELEVATIONS

A2.4



NOT FOR
CONSTRUCTION

COPPER RIDGE VILLAGE

STEAMBOAT SPRINGS, CO



TRANSPARENCY CALCS:
FLOOR AREA: 1392 SF
REQUIRED: 348 SF
PROVIDED: 536 SF
PERCENTAGE: 38%

TRANSPARENCY CALCS:
FLOOR AREA: 1392 SF
REQUIRED: 348 SF
PROVIDED: 536 SF
PERCENTAGE: 38%

TRANSPARENCY CALCS:
FLOOR AREA: 1390 SF
REQUIRED: 348 SF
PROVIDED: 349 SF
PERCENTAGE: 25%

TRANSPARENCY CALCS:
FLOOR AREA: 1390 SF
REQUIRED: 348 SF
PROVIDED: 349 SF
PERCENTAGE: 25%

BUILDING 1A - BUILDING HEIGHTS - REAR ELEVATION			
	BLDG 1	BLDG 3	BLDG 5
OVERALL BLDG HGT	41'-4"	58'-8 1/2"	60'-6 1/2"
GREATEST PLATE HGT.	28'-8 1/2"	46'-1"	47'-10 1/2"
LOWEST PLATE HGT.	23'-3"	41'-8 1/2"	25'-8 1/2"
AVERAGE PLATE HGT.	25'-11 3/4"	43'-10 3/4"	39'-11 3/4"

BUILDING 1A - BUILDING HEIGHTS - RIGHT ELEVATION			
	BLDG 1	BLDG 3	BLDG 5
OVERALL BLDG HGT	51'-5"	57'-6"	47'-0 1/2"
GREATEST PLATE HGT.	38'-9"	44'-10 1/2"	34'-5"
LOWEST PLATE HGT.	27'-7"	38'-7"	25'-8"
AVERAGE PLATE HGT.	33'-2"	41'-8 3/4"	30'-0 1/2"

1 BUILDING 3 (TYPE 1A) - REAR ELEVATION
1/8" = 1'-0"



TRANSPARENCY CALCS:
FLOOR AREA: 590 SF
REQUIRED: 148 SF
PROVIDED: 160 SF
PERCENTAGE: 27%

TRANSPARENCY CALCS:
FLOOR AREA: 590 SF
REQUIRED: 148 SF
PROVIDED: 160 SF
PERCENTAGE: 27%

TRANSPARENCY CALCS:
FLOOR AREA: 590 SF
REQUIRED: 148 SF
PROVIDED: 160 SF
PERCENTAGE: 27%

TRANSPARENCY CALCS:
FLOOR AREA: 303 SF
REQUIRED: 76 SF
PROVIDED: 58 SF
PERCENTAGE: 19%

COLOR LEGEND SCHEME A*	
A	BODY COLOR 1: MANUF: SHERWIN WILLIAMS, OR SIM. COLOR: VIRTUAL TAUPE SW 7039
B	BODY COLOR 2: MANUF: SHERWIN WILLIAMS, OR SIM. COLOR: URBANE BRONZE SW 7048
C	STONE: MANUF: CORONADO, OR SIM. COLOR: IDAHO DRYSTACK - ANTIQUE BUFF
D	TRIM: MANUF: SHERWIN WILLIAMS, OR SIM. COLOR: IRON GATE SW 2926
E	ROOF: MANUF: CERTAINTED, OR SIM. COLOR: LANDMARK - HEATHER BLEND

*ALL COLOR INFORMATION IS APPROXIMATE. MANUFACTURER AND FINAL TINT SUBJECT TO CHANGE

2 BUILDING 3 (TYPE 1A) - RIGHT ELEVATION
1/8" = 1'-0"

NOT FOR CONSTRUCTION

DRAWN BY:

CHECKED BY:

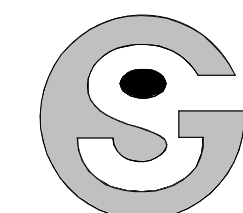
ISSUE DATE:
12/07/2021

REVISIONS:

NO.	DESCRIPTION

BLDG 3 (TYPE 1A) - ELEVATIONS

A2.5



NOT FOR
CONSTRUCTION



TRANSPARENCY CALCS:
FLOOR AREA: 1499 SF
REQUIRED: 376 SF
PROVIDED: 464 SF
PERCENTAGE: 31%

TRANSPARENCY CALCS:
FLOOR AREA: 1499 SF
REQUIRED: 376 SF
PROVIDED: 464 SF
PERCENTAGE: 31%

TRANSPARENCY CALCS:
FLOOR AREA: 1499 SF
REQUIRED: 376 SF
PROVIDED: 464 SF
PERCENTAGE: 31%

TRANSPARENCY CALCS:
FLOOR AREA: 834 SF
REQUIRED: 209 SF
PROVIDED: 233 SF
PERCENTAGE: 28%

BUILDING 1B - BUILDING HEIGHTS - FRONT ELEVATION			
	BLDG 2	BLDG 4	BLDG 6
OVERALL BLDG HGT	65'-4"	47'-8 1/2"	46'-5 1/2"
GREATEST PLATE HGT.	49'-2 1/2"	31'-7"	30'-4"
LOWEST PLATE HGT.	36'-11"	19'-3"	26'-8"
AVERAGE PLATE HGT.	43'-0 3/4"	25'-5"	28'-6"

BUILDING 1B - BUILDING HEIGHTS - LEFT ELEVATION			
	BLDG 2	BLDG 4	BLDG 6
OVERALL BLDG HGT	63'-10 1/2"	47'-10 1/2"	43'-0"
GREATEST PLATE HGT.	47'-9"	31'-9"	26'-10 1/2"
LOWEST PLATE HGT.	3'-2"	9'-11 1/2"	24'-3"
AVERAGE PLATE HGT.	41'-11 1/2"	20'-10 1/4"	25'-6 3/4"

1 BUILDING 4 (TYPE 1B) - FRONT ELEVATION
1/8" = 1'-0"



TRANSPARENCY CALCS:
FLOOR AREA: 590 SF
REQUIRED: 148 SF
PROVIDED: 180 SF
PERCENTAGE: 27%

TRANSPARENCY CALCS:
FLOOR AREA: 590 SF
REQUIRED: 148 SF
PROVIDED: 180 SF
PERCENTAGE: 27%

TRANSPARENCY CALCS:
FLOOR AREA: 590 SF
REQUIRED: 148 SF
PROVIDED: 180 SF
PERCENTAGE: 27%

TRANSPARENCY CALCS:
FLOOR AREA: 420 SF
REQUIRED: 105 SF
PROVIDED: 112 SF
PERCENTAGE: 28%

COLOR LEGEND SCHEME B*	
F	BODY COLOR 1: MANUF: SHERWIN WILLIAMS, OR SIM. COLOR: WARM PEWTER SW 9572
G	BODY COLOR 2: MANUF: SHERWIN WILLIAMS, OR SIM. COLOR: PEWTER GREEN SW 6208
H	STONE: MANUF: CORONADO, OR SIM. COLOR: EASTERN MTN. LEDGE - HURON
I	TRIM: MANUF: SHERWIN WILLIAMS, OR SIM. COLOR: CAVIAR SW 6990
J	ROOF: MANUF: CERTAINTEED, OR SIM. COLOR: LANDMARK - PEWTERWOOD

*ALL COLOR INFORMATION IS APPROXIMATE. MANUFACTURER AND FINAL TINT SUBJECT TO CHANGE

2 BUILDING 4 (TYPE 1B) - LEFT ELEVATION
1/8" = 1'-0"

COPPER RIDGE VILLAGE

STEAMBOAT SPRINGS, CO

NOT FOR CONSTRUCTION

DRAWN BY:

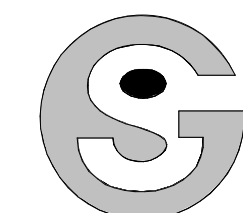
CHECKED BY:

ISSUE DATE:
12/07/2021

REVISIONS:

BLDG 4 (TYPE 1B) - ELEVATIONS

A2.6



Godden|Sudik
ARCHITECTS
SEE WHAT COULD BE
303.455.4437
www.goddensudik.com

5975 S. Quebec Street
Suite 250
Centennial, CO 80111

NOT FOR
CONSTRUCTION



TRANSPARENCY CALCS:
FLOOR AREA: 1304 SF
REQUIRED: 326 SF
PROVIDED: 479 SF
PERCENTAGE: 37%

TRANSPARENCY CALCS:
FLOOR AREA: 1304 SF
REQUIRED: 326 SF
PROVIDED: 479 SF
PERCENTAGE: 37%

TRANSPARENCY CALCS:
FLOOR AREA: 1304 SF
REQUIRED: 326 SF
PROVIDED: 479 SF
PERCENTAGE: 37%

BUILDING 1B - BUILDING HEIGHTS - REAR ELEVATION			
	BLDG 2	BLDG 4	BLDG 6
OVERALL BLDG HGT.	53'-4 1/2"	31'-0 1/2"	45'-9 1/2"
GREATEST PLATE HGT.	37'-3"	14'-1 1/2"	29'-8"
LOWEST PLATE HGT.	33'-6"	9'-3 1/2"	24'-3"
AVERAGE PLATE HGT.	35'-4 1/2"	12'-1 1/4"	26'-11 1/2"

BUILDING 1B - BUILDING HEIGHTS - RIGHT ELEVATION			
	BLDG 2	BLDG 4	BLDG 6
OVERALL BLDG HGT.	53'-1 1/2"	35'-2"	44'-0 1/2"
GREATEST PLATE HGT.	37'-9 1/2"	19'-0 1/2"	18'-9 1/2"
LOWEST PLATE HGT.	36'-5"	14'-1 1/2"	15'-2"
AVERAGE PLATE HGT.	37'-11 1/4"	16'-11 3/4"	16'-11 3/4"

1 BUILDING 4 (TYPE 1B) - REAR ELEVATION
1/8" = 1'-0"



TRANSPARENCY CALCS:
FLOOR AREA: 590 SF
REQUIRED: 148 SF
PROVIDED: 160 SF
PERCENTAGE: 27%

TRANSPARENCY CALCS:
FLOOR AREA: 590 SF
REQUIRED: 148 SF
PROVIDED: 160 SF
PERCENTAGE: 27%

TRANSPARENCY CALCS:
FLOOR AREA: 590 SF
REQUIRED: 148 SF
PROVIDED: 160 SF
PERCENTAGE: 27%

COLOR LEGEND SCHEME B*	
F	BODY COLOR 1: MANUF: SHERWIN WILLIAMS, OR SIM. COLOR: WARM PEWTER SW 9572
G	BODY COLOR 2: MANUF: SHERWIN WILLIAMS, OR SIM. COLOR: PEWTER GREEN SW 6208
H	STONE: MANUF: CORONADO, OR SIM. COLOR: EASTERN MTN. LEDGE - HURON
I	TRIM: MANUF: SHERWIN WILLIAMS, OR SIM. COLOR: CAVIAR SW 6990
J	ROOF: MANUF: CERTAINTED, OR SIM. COLOR: LANDMARK - PEWTERWOOD

*ALL COLOR INFORMATION IS APPROXIMATE. MANUFACTURER AND FINAL TINT SUBJECT TO CHANGE

2 BUILDING 4 (TYPE 1B) - RIGHT ELEVATION
1/8" = 1'-0"

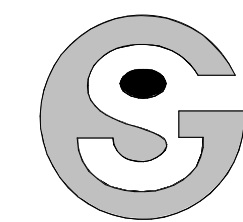
COPPER RIDGE VILLAGE

STEAMBOAT SPRINGS, CO

NOT FOR CONSTRUCTION	DRAWN BY:
	CHECKED BY:
	ISSUE DATE: 12/07/2021
	REVISIONS:

BLDG 4 (TYPE 1B) - ELEVATIONS

A2.7



NOT FOR
CONSTRUCTION

COPPER RIDGE VILLAGE

STEAMBOAT SPRINGS, CO



1 BUILDING 5 (TYPE 1A) - FRONT ELEVATION
1/8" = 1'-0"

TRANSPARENCY CALCS:
FLOOR AREA: 1499 SF
REQUIRED: 375 SF
PROVIDED: 519 SF
PERCENTAGE: 34%

TRANSPARENCY CALCS:
FLOOR AREA: 1499 SF
REQUIRED: 375 SF
PROVIDED: 550 SF
PERCENTAGE: 37%

TRANSPARENCY CALCS:
FLOOR AREA: 1499 SF
REQUIRED: 375 SF
PROVIDED: 650 SF
PERCENTAGE: 43%

BUILDING 1A - BUILDING HEIGHTS - FRONT ELEVATION			
	BLDG 1	BLDG 3	BLDG 5
OVERALL BLDG HGT.	53'-7 3/4"	51'-3"	77'-1"
GREATEST PLATE HGT.	41'-0"	38'-7"	64'-6"
LOWEST PLATE HGT.	36'-1"	34'-10"	34'-4 1/2"
AVERAGE PLATE HGT.	38'-6 1/2"	36'-8 1/2"	49'-4 3/4"

BUILDING 1A - BUILDING HEIGHTS - LEFT ELEVATION			
	BLDG 1	BLDG 3	BLDG 5
OVERALL BLDG HGT.	49'-1"	57'-6 1/2"	77'-1 1/2"
GREATEST PLATE HGT.	36'-5"	44'-11"	64'-6"
LOWEST PLATE HGT.	23'-5 1/2"	37'-0"	49'-0 1/2"
AVERAGE PLATE HGT.	29'-11 1/4"	40'-11 1/2"	59'-9 1/4"

COLOR LEGEND SCHEME A*	
A	BODY COLOR 1: MANUF: SHERWIN WILLIAMS, OR SIM. COLOR: VIRTUAL TAUPE SW 7039
B	BODY COLOR 2: MANUF: SHERWIN WILLIAMS, OR SIM. COLOR: URBANE BRONZE SW 7048
C	STONE: MANUF: CORONADO, OR SIM. COLOR: IDAHO DRYSTACK - ANTIQUE BUFF
D	TRIM: MANUF: SHERWIN WILLIAMS, OR SIM. COLOR: IRON GATE SW 2926
E	ROOF: MANUF: CERTAINTED, OR SIM. COLOR: LANDMARK - HEATHER BLEND

*ALL COLOR INFORMATION IS APPROXIMATE. MANUFACTURER AND FINAL TINT SUBJECT TO CHANGE



2 BUILDING 5 (TYPE 1A) - LEFT ELEVATION
1/8" = 1'-0"

TRANSPARENCY CALCS:
FLOOR AREA: 627 SF
REQUIRED: 157 SF
PROVIDED: 160 SF
PERCENTAGE: 25.5%

TRANSPARENCY CALCS:
FLOOR AREA: 627 SF
REQUIRED: 157 SF
PROVIDED: 160 SF
PERCENTAGE: 25.5%

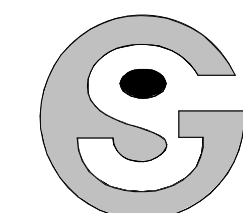
TRANSPARENCY CALCS:
FLOOR AREA: 421 SF
REQUIRED: 108 SF
PROVIDED: 112 SF
PERCENTAGE: 0%

DRAWN BY:
CHECKED BY:
ISSUE DATE:
12/07/2021

REVISIONS:

NO.	DESCRIPTION

BLDG 5 (TYPE 1A) - ELEVATIONS



NOT FOR
CONSTRUCTION

COPPER RIDGE VILLAGE
STEAMBOAT SPRINGS, CO

DRAWN BY:
CHECKED BY:
ISSUE DATE:
12/07/2021
REVISIONS:

BLDG 5 (TYPE 1A) -
ELEVATIONS

A2.9



TRANSPARENCY CALCS:
FLOOR AREA: 1392 SF
REQUIRED: 348 SF
PROVIDED: 536 SF
PERCENTAGE: 38%

TRANSPARENCY CALCS:
FLOOR AREA: 1392 SF
REQUIRED: 348 SF
PROVIDED: 536 SF
PERCENTAGE: 38%

TRANSPARENCY CALCS:
FLOOR AREA: 1392 SF
REQUIRED: 348 SF
PROVIDED: 536 SF
PERCENTAGE: 38%

BUILDING 1A - BUILDING HEIGHTS - REAR ELEVATION			
	BLDG 1	BLDG 3	BLDG 5
OVERALL BLDG HGT	41'-4"	58'-8 1/2"	60'-6 1/2"
GREATEST PLATE HGT.	28'-8 1/2"	46'-1"	47'-10 1/2"
LOWEST PLATE HGT.	23'-3"	41'-8 1/2"	25'-8 1/2"
AVERAGE PLATE HGT.	25'-11 3/4"	43'-10 3/4"	39'-11 3/4"

BUILDING 1A - BUILDING HEIGHTS - RIGHT ELEVATION			
	BLDG 1	BLDG 3	BLDG 5
OVERALL BLDG HGT	51'-5"	57'-6"	47'-0 1/2"
GREATEST PLATE HGT.	38'-9"	44'-10 1/2"	34'-5"
LOWEST PLATE HGT.	27'-7"	38'-7"	25'-8"
AVERAGE PLATE HGT.	33'-2"	41'-8 3/4"	30'-0 1/2"

COLOR LEGEND SCHEME A*

- A BODY COLOR 1:**
MANUF: SHERWIN WILLIAMS, OR SIM.
COLOR: VIRTUAL TAUPE SW 7039
- B BODY COLOR 2:**
MANUF: SHERWIN WILLIAMS, OR SIM.
COLOR: URBANE BRONZE SW 7048
- C STONE:**
MANUF: CORONADO, OR SIM.
COLOR: IDAHO DRYSTACK - ANTIQUE BUFF
- D TRIM:**
MANUF: SHERWIN WILLIAMS, OR SIM.
COLOR: IRON GATE SW 2926
- E ROOF:**
MANUF: CERTAINTED, OR SIM.
COLOR: LANDMARK - HEATHER BLEND

*ALL COLOR INFORMATION IS APPROXIMATE.
MANUFACTURER AND FINAL TINT SUBJECT TO
CHANGE

1 BUILDING 5 (TYPE 1A) - REAR ELEVATION
1/8" = 1'-0"



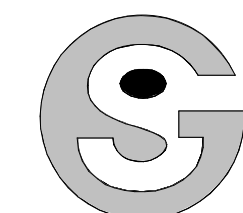
TRANSPARENCY CALCS:
FLOOR AREA: 590 SF
REQUIRED: 148 SF
PROVIDED: 160 SF
PERCENTAGE: 27%

TRANSPARENCY CALCS:
FLOOR AREA: 590 SF
REQUIRED: 148 SF
PROVIDED: 160 SF
PERCENTAGE: 27%

TRANSPARENCY CALCS:
FLOOR AREA: 590 SF
REQUIRED: 148 SF
PROVIDED: 160 SF
PERCENTAGE: 27%

TRANSPARENCY CALCS:
FLOOR AREA: 286 SF
REQUIRED: 72 SF
PROVIDED: 53 SF
PERCENTAGE: 19%

2 BUILDING 5 (TYPE 1A) - RIGHT ELEVATION
1/8" = 1'-0"



NOT FOR
CONSTRUCTION

COPPER RIDGE VILLAGE
STEAMBOAT SPRINGS, CO



TRANSPARENCY CALCS:
FLOOR AREA: 1499 SF
REQUIRED: 375 SF
PROVIDED: 464 SF
PERCENTAGE: 31%

TRANSPARENCY CALCS:
FLOOR AREA: 1499 SF
REQUIRED: 375 SF
PROVIDED: 464 SF
PERCENTAGE: 31%

TRANSPARENCY CALCS:
FLOOR AREA: 1499 SF
REQUIRED: 375 SF
PROVIDED: 627 SF
PERCENTAGE: 42%

BUILDING 1B - BUILDING HEIGHTS - FRONT ELEVATION			
	BLDG 2	BLDG 4	BLDG 6
OVERALL BLDG HGT.	65'-4"	47'-8 1/2"	46'-5 1/2"
GREATEST PLATE HGT.	49'-2 1/2"	31'-7"	30'-4"
LOWEST PLATE HGT.	36'-11"	19'-3"	26'-8"
AVERAGE PLATE HGT.	43'-0 3/4"	25'-5"	28'-6"

BUILDING 1B - BUILDING HEIGHTS - LEFT ELEVATION			
	BLDG 2	BLDG 4	BLDG 6
OVERALL BLDG HGT.	63'-10 1/2"	47'-10 1/2"	43'-0"
GREATEST PLATE HGT.	47'-9"	31'-9"	26'-10 1/2"
LOWEST PLATE HGT.	3'-2"	9'-11 1/2"	24'-3"
AVERAGE PLATE HGT.	41'-11 1/2"	20'-10 1/4"	25'-6 3/4"

1 BUILDING 6 (TYPE 1B) - FRONT ELEVATION
1/8" = 1'-0"



TRANSPARENCY CALCS:
FLOOR AREA: 590 SF
REQUIRED: 148 SF
PROVIDED: 160 SF
PERCENTAGE: 27%

TRANSPARENCY CALCS:
FLOOR AREA: 590 SF
REQUIRED: 148 SF
PROVIDED: 160 SF
PERCENTAGE: 27%

TRANSPARENCY CALCS:
FLOOR AREA: 590 SF
REQUIRED: 148 SF
PROVIDED: 160 SF
PERCENTAGE: 27%

TRANSPARENCY CALCS:
FLOOR AREA: 420 SF
REQUIRED: 105 SF
PROVIDED: 112 SF
PERCENTAGE: 26%

COLOR LEGEND SCHEME B*	
F	BODY COLOR 1: MANUF: SHERWIN WILLIAMS, OR SIM. COLOR: WARM PEWTER SW 9572
G	BODY COLOR 2: MANUF: SHERWIN WILLIAMS, OR SIM. COLOR: PEWTER GREEN SW 6206
H	STONE: MANUF: CORONADO, OR SIM. COLOR: EASTERN MTN. LEDGE - HURON
I	TRIM: MANUF: SHERWIN WILLIAMS, OR SIM. COLOR: CAVIAR SW 6990
J	ROOF: MANUF: CERTANTEED, OR SIM. COLOR: LANDMARK - PEWTERWOOD

*ALL COLOR INFORMATION IS APPROXIMATE. MANUFACTURER AND FINAL TINT SUBJECT TO CHANGE

2 BUILDING 6 (TYPE 1B) - LEFT ELEVATION
1/8" = 1'-0"

DRAWN BY:

CHECKED BY:

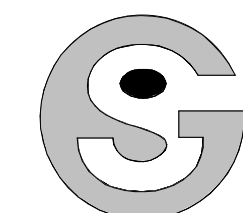
ISSUE DATE:
12/07/2021

REVISIONS:

NO.	DESCRIPTION

BLDG 6 (TYPE 1B) -
ELEVATIONS

A2.10



NOT FOR
CONSTRUCTION

COPPER RIDGE VILLAGE

STEAMBOAT SPRINGS, CO



TRANSPARENCY CALCS:
FLOOR AREA: 1304 SF
REQUIRED: 326 SF
PROVIDED: 479 SF
PERCENTAGE: 37%

TRANSPARENCY CALCS:
FLOOR AREA: 1304 SF
REQUIRED: 326 SF
PROVIDED: 479 SF
PERCENTAGE: 37%

TRANSPARENCY CALCS:
FLOOR AREA: 1304 SF
REQUIRED: 326 SF
PROVIDED: 479 SF
PERCENTAGE: 37%

TRANSPARENCY CALCS:
FLOOR AREA: 1328 SF
REQUIRED: 332 SF
PROVIDED: 413 SF
PERCENTAGE: 31%

BUILDING 1B - BUILDING HEIGHTS - REAR ELEVATION			
	BLDG 2	BLDG 4	BLDG 6
OVERALL BLDG HGT.	53'-4 1/2"	31'-0 1/2"	45'-9 1/2"
GREATEST PLATE HGT.	37'-3"	14'-1 1/2"	29'-8"
LOWEST PLATE HGT.	33'-6"	9'-3 1/2"	24'-3"
AVERAGE PLATE HGT.	35'-4 1/2"	12'-1 1/4"	26'-11 1/2"

BUILDING 1B - BUILDING HEIGHTS - RIGHT ELEVATION			
	BLDG 2	BLDG 4	BLDG 6
OVERALL BLDG HGT.	53'-1 1/2"	35'-2"	44'-0 1/2"
GREATEST PLATE HGT.	37'-9 1/2"	19'-0 1/2"	18'-9 1/2"
LOWEST PLATE HGT.	36'-5"	14'-1 1/2"	15'-2"
AVERAGE PLATE HGT.	37'-11 1/4"	16'-11 3/4"	16'-11 3/4"

1 BUILDING 6 (TYPE 1B) - REAR ELEVATION
1/8" = 1'-0"



TRANSPARENCY CALCS:
FLOOR AREA: 590 SF
REQUIRED: 148 SF
PROVIDED: 160 SF
PERCENTAGE: 27%

TRANSPARENCY CALCS:
FLOOR AREA: 590 SF
REQUIRED: 148 SF
PROVIDED: 160 SF
PERCENTAGE: 27%

TRANSPARENCY CALCS:
FLOOR AREA: 598 SF
REQUIRED: 150 SF
PROVIDED: 138 SF
PERCENTAGE: 23%

COLOR LEGEND SCHEME B*	
BODY COLOR 1:	MANUF: SHERWIN WILLIAMS, OR SIM. COLOR: WARM PEWTER SW 9572
BODY COLOR 2:	MANUF: SHERWIN WILLIAMS, OR SIM. COLOR: PEWTER GREEN SW 6206
STONE:	MANUF: CORONADO, OR SIM. COLOR: EASTERN MTN. LEDGE - HURON
TRIM:	MANUF: SHERWIN WILLIAMS, OR SIM. COLOR: CAVIAR SW 6990
ROOF:	MANUF: CERTAINTED, OR SIM. COLOR: LANDMARK - PEWTERWOOD

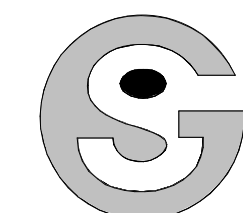
*ALL COLOR INFORMATION IS APPROXIMATE. MANUFACTURER AND FINAL TINT SUBJECT TO CHANGE

2 BUILDING 6 (TYPE 1B) - RIGHT ELEVATION
1/8" = 1'-0"

DRAWN BY:
CHECKED BY:
ISSUE DATE:
12/07/2021
REVISIONS:

BLDG 6 (TYPE 1B) - ELEVATIONS

A2.11



Godden|Sudik
ARCHITECTS
SEE WHAT COULD BE
303.455.4437
www.goddensudik.com

5975 S. Quebec Street
Suite 250
Centennial, CO 80111

NOT FOR
CONSTRUCTION

COPPER RIDGE VILLAGE

STEAMBOAT SPRINGS, CO



1 BUILDING 7 (TYPE 2) - FRONT ELEVATION
1/8" = 1'-0"



2 BUILDING 7 (TYPE 2) - LEFT ELEVATION
1/8" = 1'-0"

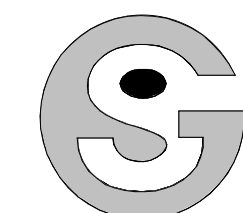
COLOR LEGEND SCHEME A*	
A	BODY COLOR 1: MANUF: SHERWIN WILLIAMS, OR SIM. COLOR: VIRTUAL TAUPE SW 7039
B	BODY COLOR 2: MANUF: SHERWIN WILLIAMS, OR SIM. COLOR: URBANE BRONZE SW 7048
C	STONE: MANUF: CORONADO, OR SIM. COLOR: IDAHO DRYSTACK - ANTIQUE BUFF
D	TRIM: MANUF: SHERWIN WILLIAMS, OR SIM. COLOR: IRON GATE SW 2926
E	ROOF: MANUF: CERTAINTED, OR SIM. COLOR: LANDMARK - HEATHER BLEND

*ALL COLOR INFORMATION IS APPROXIMATE. MANUFACTURER AND FINAL TINT SUBJECT TO CHANGE

NOT FOR CONSTRUCTION	DRAWN BY:
	CHECKED BY:
	ISSUE DATE: 12/07/2021
	REVISIONS:

BLDG 7 (TYPE 2) - ELEVATIONS

A2.12



Godden|Sudik
ARCHITECTS
SEE WHAT COULD BE
303.455.4437
www.goddensudik.com

5975 S. Quebec Street
Suite 250
Centennial, CO 80111

NOT FOR
CONSTRUCTION



TRANSPARENCY CALCS:
FLOOR AREA: 933 SF
REQUIRED: 233 SF
PROVIDED: 381 SF
PERCENTAGE: 40%

TRANSPARENCY CALCS:
FLOOR AREA: 933 SF
REQUIRED: 233 SF
PROVIDED: 381 SF
PERCENTAGE: 40%

TRANSPARENCY CALCS:
FLOOR AREA: 933 SF
REQUIRED: 233 SF
PROVIDED: 381 SF
PERCENTAGE: 40%

TRANSPARENCY CALCS:
FLOOR AREA: 975 SF
REQUIRED: 244 SF
PROVIDED: 322 SF
PERCENTAGE: 33%

1 BUILDING 7 (TYPE 2) - REAR ELEVATION
1/8" = 1'-0"



TRANSPARENCY CALCS:
FLOOR AREA: 627 SF
REQUIRED: 157 SF
PROVIDED: 160 SF
PERCENTAGE: 25.5%

TRANSPARENCY CALCS:
FLOOR AREA: 627 SF
REQUIRED: 157 SF
PROVIDED: 160 SF
PERCENTAGE: 25.5%

TRANSPARENCY CALCS:
FLOOR AREA: 627 SF
REQUIRED: 157 SF
PROVIDED: 160 SF
PERCENTAGE: 25.5%

TRANSPARENCY CALCS:
FLOOR AREA: 421 SF
REQUIRED: 106 SF
PROVIDED: 112 SF
PERCENTAGE: 26%

COLOR LEGEND SCHEME A*	
A	BODY COLOR 1: MANUF: SHERWIN WILLIAMS, OR SIM. COLOR: VIRTUAL TAUPE SW 7039
B	BODY COLOR 2: MANUF: SHERWIN WILLIAMS, OR SIM. COLOR: URBANE BRONZE SW 7048
C	STONE: MANUF: CORONADO, OR SIM. COLOR: IDAHO DRYSTACK - ANTIQUE BUFF
D	TRIM: MANUF: SHERWIN WILLIAMS, OR SIM. COLOR: IRON GATE SW 2926
E	ROOF: MANUF: CERTAINTED, OR SIM. COLOR: LANDMARK - HEATHER BLEND

*ALL COLOR INFORMATION IS APPROXIMATE. MANUFACTURER AND FINAL TINT SUBJECT TO CHANGE

2 BUILDING 7 (TYPE 2) - LEFT ELEVATION
1/8" = 1'-0"

COPPER RIDGE VILLAGE

STEAMBOAT SPRINGS, CO

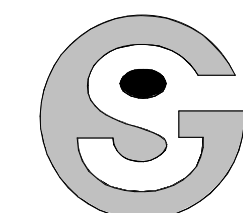
NOT FOR
CONSTRUCTION

DRAWN BY:
CHECKED BY:
ISSUE DATE:
12/07/2021

REVISIONS:

BLDG 7 (TYPE 2) - ELEVATIONS

A2.13



Godden|Sudik
ARCHITECTS
SEE WHAT COULD BE
303.455.4437
www.goddensudik.com

5975 S. Quebec Street
Suite 250
Centennial, CO 80111

NOT FOR
CONSTRUCTION

COPPER RIDGE VILLAGE
STEAMBOAT SPRINGS, CO

GENERATION LIGHTING

8720701-71: Large One Light Outdoor Wall Lantern



Dimensions:
Width: 8"
Height: 24 5/8"
Weight: 9.35 lbs.
Extends: 6 3/4"
Wire: 6 1/2" (color/Black/White)
Mounting Proc: Screw(s)
Connection: Mounted To Box

Bulbs:
1 - Medium T10 60w Max. 120v - Not included
0 - Medium A19 60w Max. 120v - Not included

- Features:**
- This fixture features mouth-blown glass and slight variations are an inherent part of the handcrafting process.
 - Easily converts to LED with optional replacement lamps
 - Meets Title 24 energy efficiency standards
 - Title 24 compliant if used with Joint Appendix (JA8) approved light bulbs listed in the California Energy Commission Appliance database.

Collection: Alban

Featured in the decorative Alban collection

1 A19 Medium 60 watt light bulb and 1 T10 Medium 60 watt light bulb

Etched opal glass shade

Easily converts to LED with optional replacement lamps

Meets Title 24 energy efficiency standards

UPC #:785652071171

Finish: Antique Bronze (71)

Material List:
1 Body - Aluminum - Antique Bronze

Safety Listing:
Safety Listed for Wet Locations

Instruction Sheets:
Trilingual (English, Spanish, and French)
(990W8518301-8718301-8520701-8720701-ALB)
Trilingual (English, Spanish, and French) (ALBAN-WALL)

Shade / Glass / Diffuser Details:

Part	Material	Finish	Quantity	Item Number	Length	Width	Height	Diameter	Filter Diameter	Shade Top Length	Shade Top Width	Shade Top Diameter
Shade	Glass	Etched Opal	1		5	5	21 1/8					

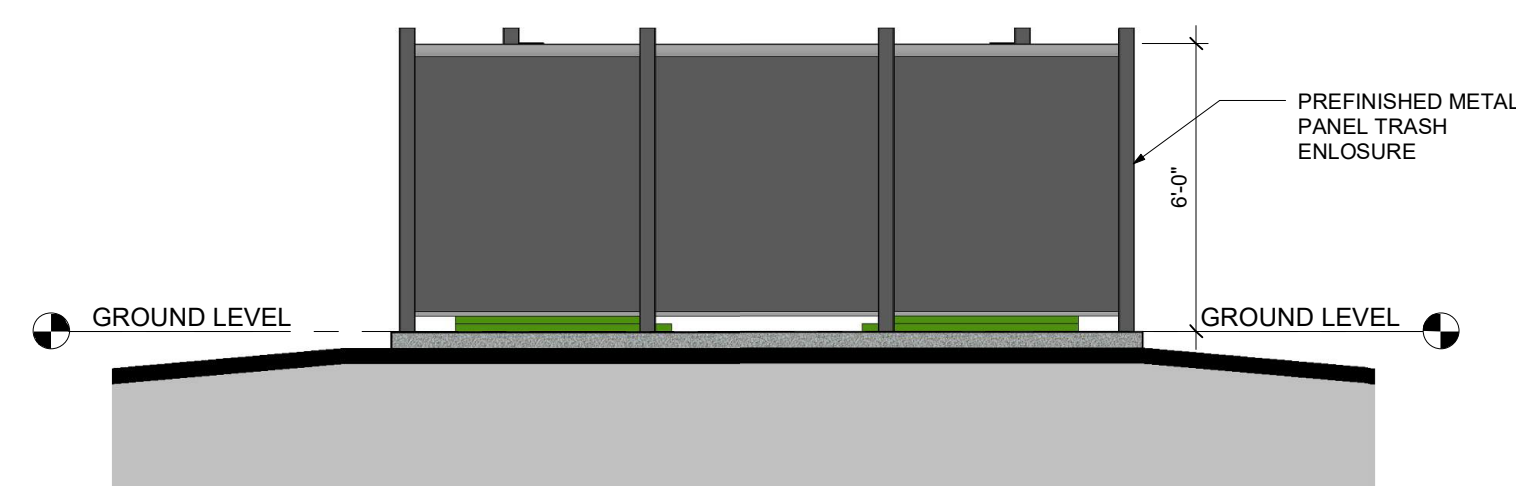
Backplate / Canopy Details:

Type	Height / Length	Width	Depth	Diameter	Outlet Box Up	Outlet Box Down
Back Plate	24 5/8	8	3/4		12 5/16	

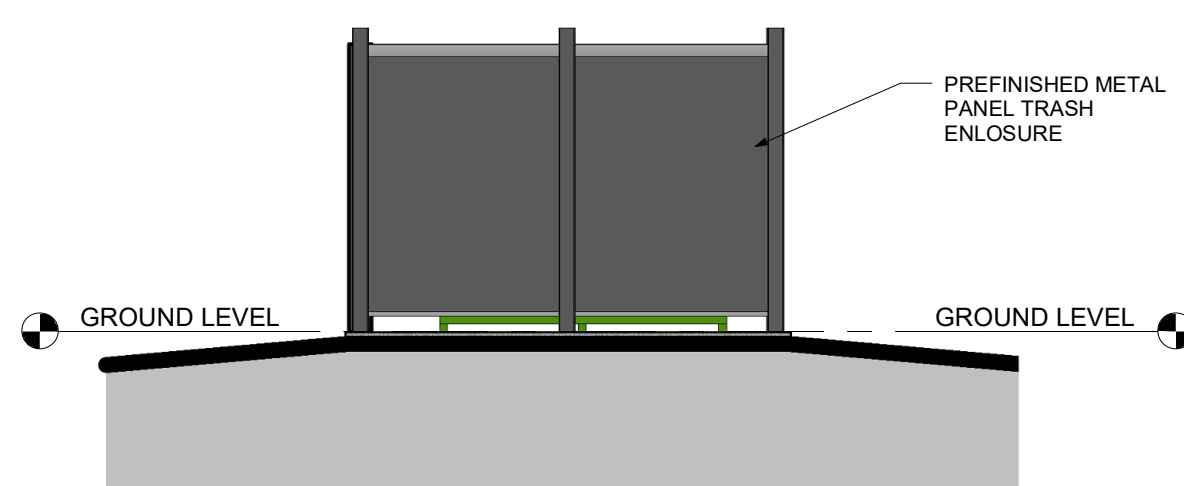
Shipping Information:

Package Type	Product #	Quantity	UPC	Length	Width	Height	Cube	Weight	Frt. Class	UPS Ship
Individual	8518301-04	1	785652071171	29.5	11	10.25	1.925	11.3	175	Yes
NJ Pallet		36		48	40	70	77.778	405		No
NV Pallet		36		48	40	70	77.778	405		No

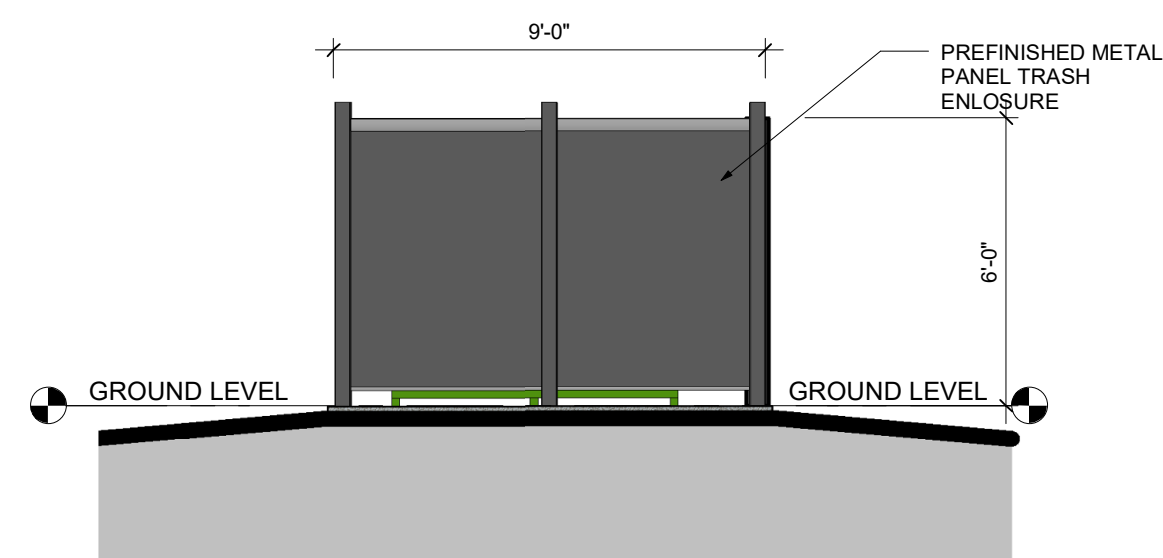
Generation Lighting reserves the right to revise the design of components of any product due to parts availability or change in safety listing standards without assuming any obligation or liability to modify any products previously manufactured and without notice. This literature depicts a product design that is the sole and exclusive property of Generation Lighting. In compliance with U.S. copyright and patent requirements, notification is hereby presented in this form that this literature, or the product it depicts, is not to be copied, altered or used in any manner without the express written consent of, or contrary to the best interests of Generation Lighting, a Visual Comfort & Co brand.



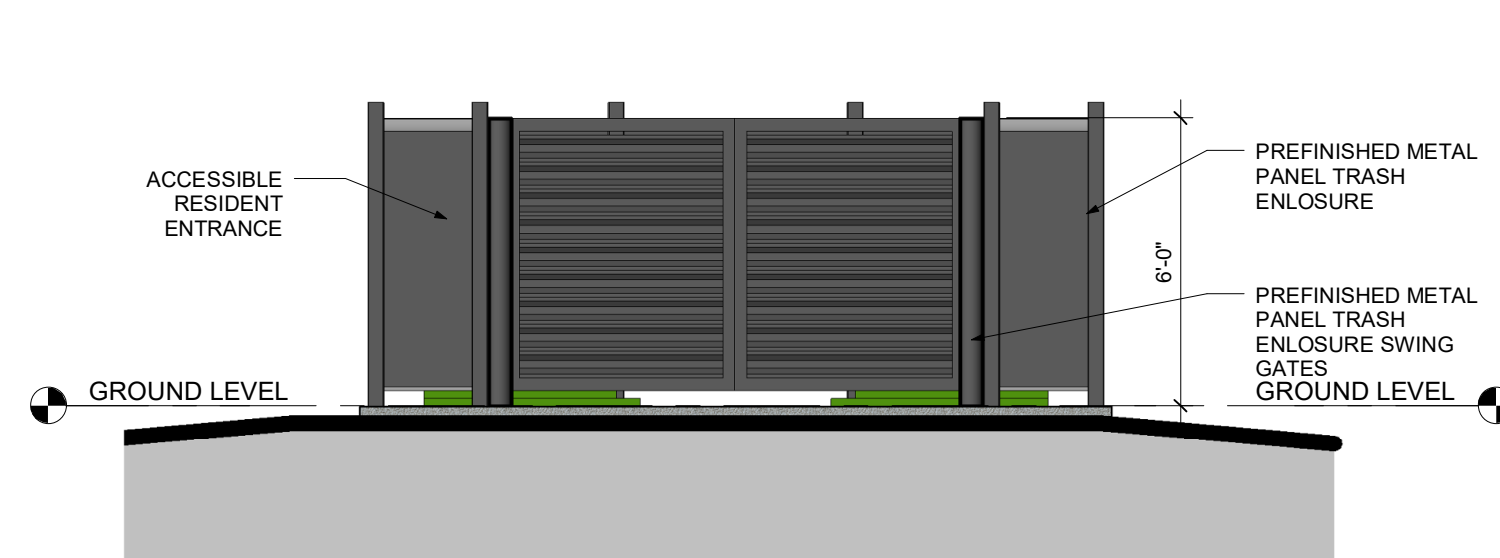
5 TRASH - REAR ELEVATION
1/4" = 1'-0"



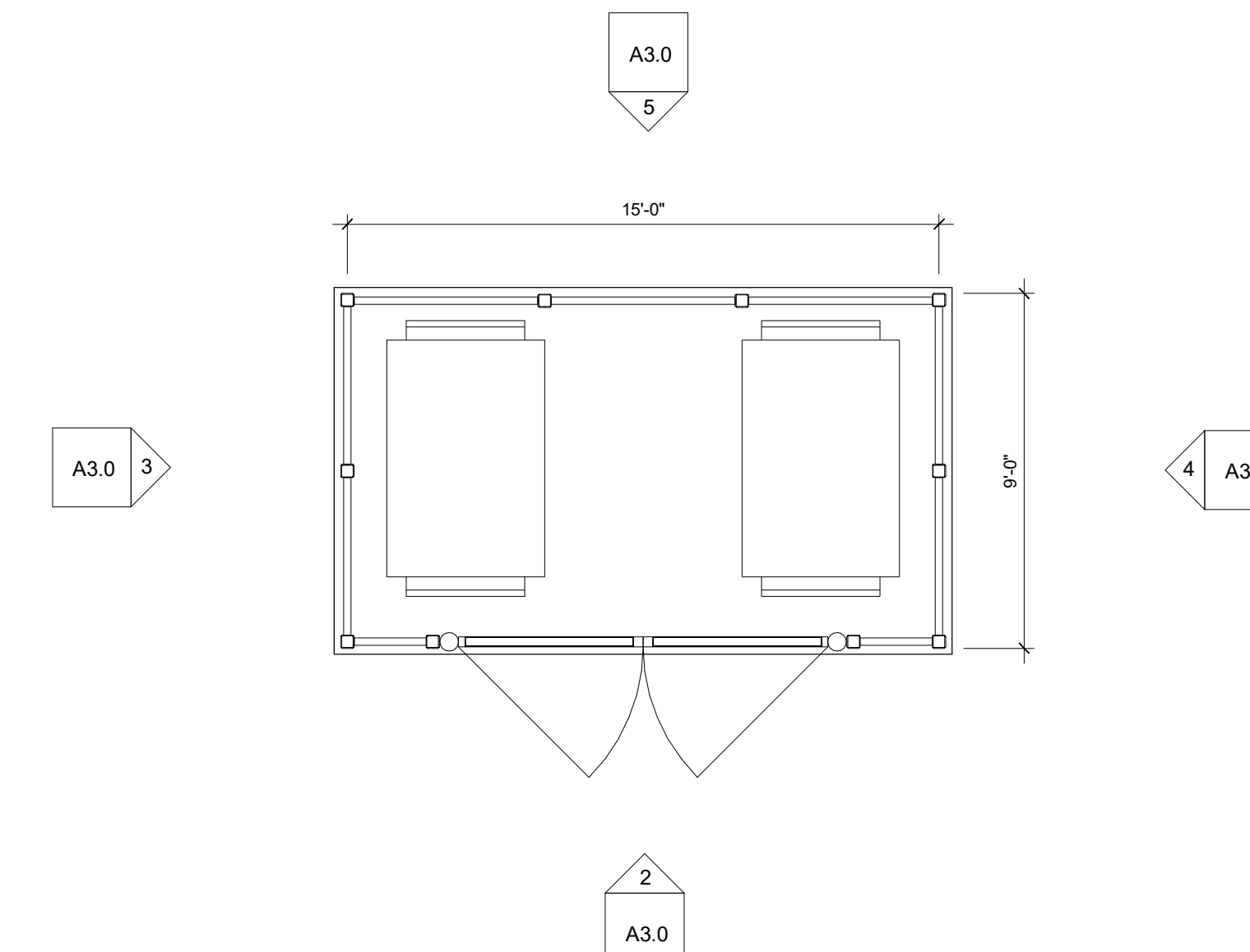
4 TRASH - RIGHT ELEVATION
1/4" = 1'-0"



3 TRASH - LEFT ELEVATION
1/4" = 1'-0"



2 TRASH - FRONT ELEVATION
1/4" = 1'-0"



1 TRASH ENCLOSURE PLAN
1/4" = 1'-0"

DRAWN BY:
CHECKED BY:
ISSUE DATE:
12/07/2021

REVISIONS:

NO.	DESCRIPTION

TRASH/RECYCLING
& EXTERIOR
LIGHTING

A3.0

© Copyright 2021
Godden | Sudik Architects & Planners, Inc.