

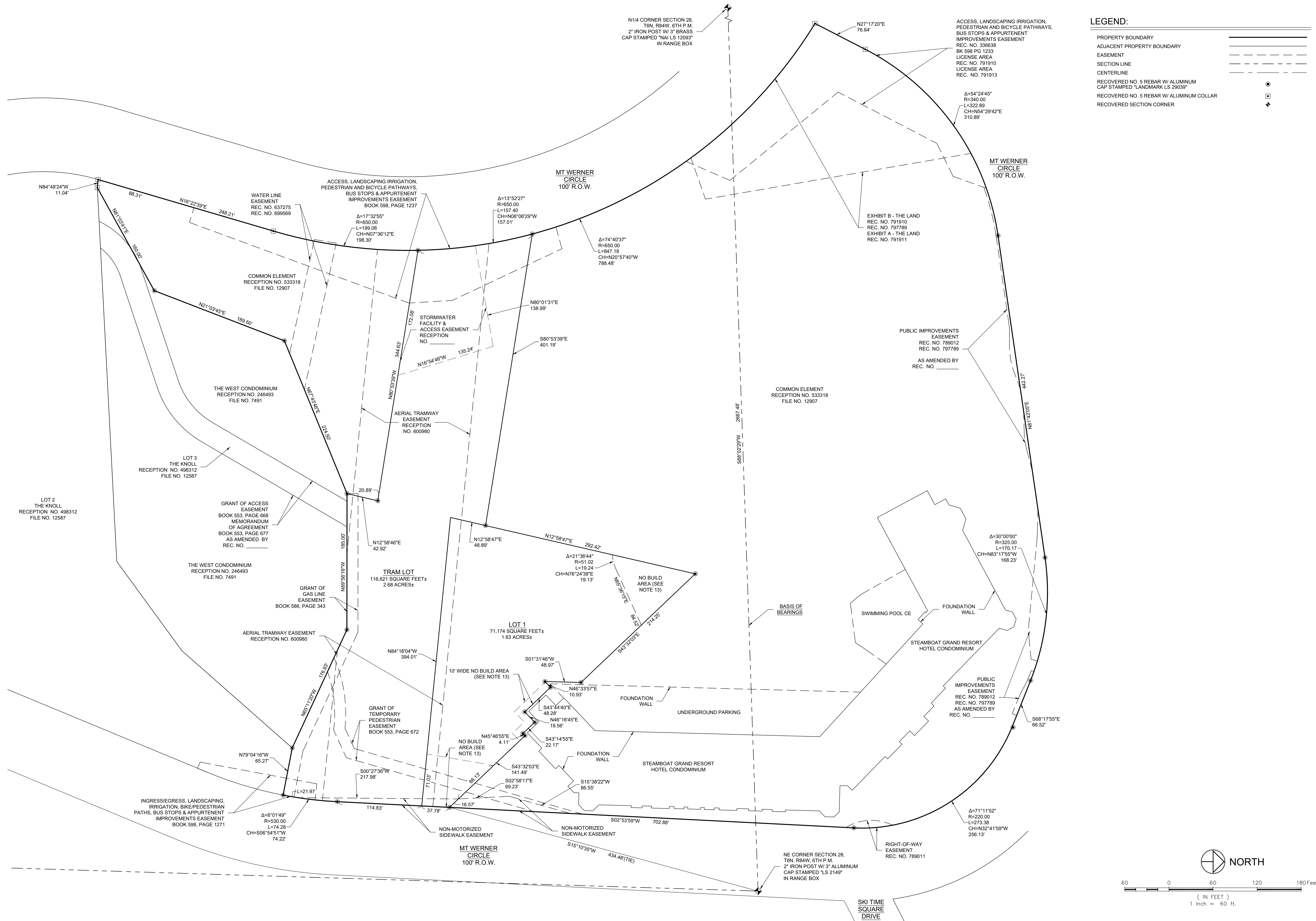
A RESUBDIVISION OF LOT 1, THE KNOLL;
LOCATED IN THE SE1/4 SECTION 21 AND IN THE NE1/4 SECTION 28, T6N, R84W, 6TH P.M.;
CITY OF STEAMBOAT SPRINGS, COUNTY OF ROUTT, STATE OF COLORADO
CONTAINING A CALCULATED AREA OF 19.96 ACRES

FINAL PLAT FOR THE FIFTH SUPPLEMENT TO THE CONDOMINIUM MAP AND PLAT OF THE STEAMBOAT GRAND RESORT HOTEL CONDOMINIUM

A RESUBDIVISION OF LOT 1, THE KNOLL; LOCATED IN THE SE1/4 SECTION 21 AND IN THE NE1/4 SECTION 28, T6N, R84W, 6TH P.M.;

CITY OF STEAMBOAT SPRINGS, COUNTY OF ROUTT, STATE OF COLORADO

CONTAINING A CALCULATED AREA OF 19.96 ACRES




LEGEND:

PROPERTY BOUNDARY	_____
ADJACENT PROPERTY BOUNDARY	_____
EASEMENT	_____
SECTION LINE	_____
CENTERLINE	_____
RECOVERED NO. 5 REBAR W/ ALUMINUM CAP STAMPED "LANDMARK LS 29039"	⦿
RECOVERED NO. 5 REBAR W/ ALUMINUM COLLAR	⦿
RECOVERED SECTION CORNER	⬢

CIVIL ENGINEERS | SURVEYORS

141 9th Street ~ P.O. Box 774943
Steamboat Springs, Colorado 80477
(970) 871-9494
www.LANDMARK-CO.com



LANDMARK
CONSULTANTS, INC.

[illegible]

DRAFT

03/04/24

DATE:	03/04/24	2571-001
DRAWN BY:	JAG	
CHECKED BY:		

FINAL PLAT FOR THE
SUPPLEMENT TO THE CONDOMINIUM MAP AND PLAT
FOR THE STEAMBOAT GRAND RESORT HOTEL CONDOMINIUM
IN THE SE1/4 SECTION 21 AND IN THE NE1/4 SECTION 28
T4S, R84W, 6TH P.M.; CITY OF STEAMBOAT SPRINGS,
COUNTY OF ROUTT, STATE OF COLORADO

FIR
OF
LOCAT

SHEET

2

Of 2 Sheets

DRAWING FILENAME: P:\2571-001\DWG\Production Drawings\2571-001-P04-overall.dwg LAYOUT NAME: 2 DATE: Mar 04, 2024 - 12:34pm CAD OPERATOR: jrf

LIST OF XREFS: [2572-001-xRef.dwg] [V:\CHAP1\2571-001-TC REVIEW\2571-001-xRef.dwg]