



PROPOSED 8" SANITARY SEWER W/ MH & C.O.

EXISTING #* SANITARY SEWER W/ MH & C.O.

PROPOSED #\" WATER PIPE

PROPOSED GV, FH & CS

EXISTING WATER

EXISTING GV & FH

PROPOSED STORM/CULVERT, INLET, MH,

EXIST #\" STORM/CULVERT, INLET, MH,

PROPOSED MAJOR CONTOUR

PROPOSED MINOR CONTOUR

EXISTING MAJOR CONTOUR
EXISTING MINOR CONTOUR

PROBABLE LIMITS OF GRADING
(SUBJECT TO CHANGE BASED ON ENCOUNTERED
CONDITIONS AND CONTRACTOR MEANS/METHODS)

PROPOSED SPOT ELEVATION

EXISTING SPOT ELEVATION

PROPOSED OVERLAND FLOW DIRECTION W/SLOPE

EXISTING OVERLAND FLOW DIRECTION W/SLOPE

PROPOSED CHANNELIZED FLOW DIRECTION

EXISTING CHANNELIZED FLOW DIRECTION

NOTES:

- CALL UTILITY NOTIFICATION CENTER OF
COLORADO



Know what's below.
Call before you dig.

CALL 2 BUSINESS DAYS IN ADVANCE BEFORE YOU DIG, GRADE, OR EXCAVATE FOR THE MARKING OF UNDERGROUND MEMBER UTILITIES.



CIVIL ENGINEERS | SURVEYORS

141 9th Street ~ P.O. Box 774943
Steamboat Springs, Colorado 80477
(970) 871-9494
www.LANDMARK-CO.com

(516) 671-3434
www.LANDMARK-CO.com



LNDMARK
CONSULTANTS, INC.

These drawings are instruments of service provided by Landmark Consultants, Inc. and are not to be used for any type of construction or contracting unless signed and sealed by a Professional Engineer in the employ of Landmark Consultants, Inc.

PROJECT:	1012450	NO.	DATE:	BY:	DESCRIPTION:
DATE:	2/3/22	2	3-15-22	EG	ADDP PERMIT RESPONSE
CONTACT:	Grip				
EMAIL:	eng@landmark-co.com				

WILD BLUE GONDOLA

GRADING & DRAINAGE (BASE AREA)

SHEET

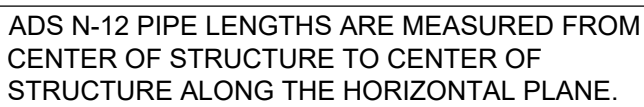
C.300

DRAWING FILENAME: P:\1012-000\DWG\Production Drawings\CDR\1012-050-C30-Grounding Lower Terminal.dwg LAYOUT NAME: C:300 DATE: Mar 16, 2022 - 3:04pm CAD OPERATOR: Elk
LIST OF XREFS: [1012-050-01.dwg] [1012-050-02.dwg] [1012-050-03.dwg] [1012-050-04.dwg] [1012-050-05.dwg] [1012-050-06.dwg] [1012-050-07.dwg] [1012-050-08.dwg] [1012-050-09.dwg] [1012-050-10.dwg] [1012-050-11.dwg] [1012-050-12.dwg] [1012-050-13.dwg] [1012-050-14.dwg] [1012-050-15.dwg] [1012-050-16.dwg] [1012-050-17.dwg] [1012-050-18.dwg] [1012-050-19.dwg] [1012-050-20.dwg] [1012-050-21.dwg] [1012-050-22.dwg] [1012-050-23.dwg] [1012-050-24.dwg] [1012-050-25.dwg] [1012-050-26.dwg] [1012-050-27.dwg] [1012-050-28.dwg] [1012-050-29.dwg] [1012-050-30.dwg] [1012-050-31.dwg] [1012-050-32.dwg] [1012-050-33.dwg] [1012-050-34.dwg] [1012-050-35.dwg] [1012-050-36.dwg] [1012-050-37.dwg] [1012-050-38.dwg] [1012-050-39.dwg] [1012-050-40.dwg] [1012-050-41.dwg] [1012-050-42.dwg] [1012-050-43.dwg] [1012-050-44.dwg] [1012-050-45.dwg] [1012-050-46.dwg] [1012-050-47.dwg] [1012-050-48.dwg] [1012-050-49.dwg] [1012-050-50.dwg] [1012-050-51.dwg] [1012-050-52.dwg] [1012-050-53.dwg] [1012-050-54.dwg] [1012-050-55.dwg] [1012-050-56.dwg] [1012-050-57.dwg] [1012-050-58.dwg] [1012-050-59.dwg] [1012-050-60.dwg] [1012-050-61.dwg] [1012-050-62.dwg] [1012-050-63.dwg] [1012-050-64.dwg] [1012-050-65.dwg] [1012-050-66.dwg] [1012-050-67.dwg] [1012-050-68.dwg] [1012-050-69.dwg] [1012-050-70.dwg] [1012-050-71.dwg] [1012-050-72.dwg] [1012-050-73.dwg] [1012-050-74.dwg] [1012-050-75.dwg] [1012-050-76.dwg] [1012-050-77.dwg] [1012-050-78.dwg] [1012-050-79.dwg] [1012-050-80.dwg] [1012-050-81.dwg] [1012-050-82.dwg] [1012-050-83.dwg] [1012-050-84.dwg] [1012-050-85.dwg] [1012-050-86.dwg] [1012-050-87.dwg] [1012-050-88.dwg] [1012-050-89.dwg] [1012-050-90.dwg] [1012-050-91.dwg] [1012-050-92.dwg] [1012-050-93.dwg] [1012-050-94.dwg] [1012-050-95.dwg] [1012-050-96.dwg] [1012-050-97.dwg] [1012-050-98.dwg] [1012-050-99.dwg] [1012-050-100.dwg] [1012-050-101.dwg] [1012-050-102.dwg] [1012-050-103.dwg] [1012-050-104.dwg] [1012-050-105.dwg] [1012-050-106.dwg] [1012-050-107.dwg] [1012-050-108.dwg] [1012-050-109.dwg] [1012-050-110.dwg] [1012-050-111.dwg] [1012-050-112.dwg] [1012-050-113.dwg] [1012-050-114.dwg] [1012-050-115.dwg] [1012-050-116.dwg] [1012-050-117.dwg] [1012-050-118.dwg] [1012-050-119.dwg] [1012-050-120.dwg] [1012-050-121.dwg] [1012-050-122.dwg] [1012-050-123.dwg] [1012-050-124.dwg] [1012-050-125.dwg] [1012-050-126.dwg] [1012-050-127.dwg] [1012-050-128.dwg] [1012-050-129.dwg] [1012-050-130.dwg] [1012-050-131.dwg] [1012-050-132.dwg] [1012-050-133.dwg] [1012-050-134.dwg] [1012-050-135.dwg] [1012-050-136.dwg] [1012-050-137.dwg] [1012-050-138.dwg] [1012-050-139.dwg] [1012-050-140.dwg] [1012-050-141.dwg] [1012-050-142.dwg] [1012-050-143.dwg] [1012-050-144.dwg] [1012-050-145.dwg] [1012-050-146.dwg] [1012-050-147.dwg] [1012-050-148.dwg] [1012-050-149.dwg] [1012-050-150.dwg] [1012-050-151.dwg] [1012-050-152.dwg] [1012-050-153.dwg] [1012-050-154.dwg] [1012-050-155.dwg] [1012-050-156.dwg] [1012-050-157.dwg] [1012-050-158.dwg] [1012-050-159.dwg] [1012-050-160.dwg] [1012-050-161.dwg] [1012-050-162.dwg] [1012-050-163.dwg] [1012-050-164.dwg] [1012-050-165.dwg] [1012-050-166.dwg] [1012-050-167.dwg] [1012-050-168.dwg] [1012-050-169.dwg] [1012-050-170.dwg] [1012-050-171.dwg] [1012-050-172.dwg] [1012-050-173.dwg] [1012-050-174.dwg] [1012-050-175.dwg] [1012-050-176.dwg] [1012-050-177.dwg] [1012-050-178.dwg] [1012-050-179.dwg] [1012-050-180.dwg] [1012-050-181.dwg] [1012-050-182.dwg] [1012-050-183.dwg] [1012-050-184.dwg] [1012-050-185.dwg] [1012-050-186.dwg] [1012-050-187.dwg] [1012-050-188.dwg] [1012-050-189.dwg] [1012-050-190.dwg] [1012-050-191.dwg] [1012-050-192.dwg] [1012-050-193.dwg] [1012-050-194.dwg] [1012-050-195.dwg] [1012-050-196.dwg] [1012-050-197.dwg] [1012-050-198.dwg] [1012-050-199.dwg] [1012-050-200.dwg] [1012-050-201.dwg] [1012-050-202.dwg] [1012-050-203.dwg] [1012-050-204.dwg] [1012-050-205.dwg] [1012-050-206.dwg] [1012-050-207.dwg] [1012-050-208.dwg] [1012-050-209.dwg] [1012-050-210.dwg] [1012-050-211.dwg] [1012-050-212.dwg] [1012-050-213.dwg] [1012-050-214.dwg] [1012-050-215.dwg] [1012-050-216.dwg] [1012-050-217.dwg] [1012-050-218.dwg] [1012-050-219.dwg] [1012-050-220.dwg] [1012-050-221.dwg] [1012-050-222.dwg] [1012-050-223.dwg] [1012-050-224.dwg] [1012-050-225.dwg] [1012-050-226.dwg] [1012-050-227.dwg] [1012-050-228.dwg] [1012-050-229.dwg] [1012-050-230.dwg] [1012-050-231.dwg] [1012-050-232.dwg] [1012-050-233.dwg] [1012-050-234.dwg] [1012-050-235.dwg] [1012-050-236.dwg] [1012-050-237.dwg] [1012-050-238.dwg] [1012-050-239.dwg] [1012-050-240.dwg] [1012-050-241.dwg] [1012-050-242.dwg] [1012-050-243.dwg] [1012-050-244.dwg] [1012-050-245.dwg] [1012-050-246.dwg] [1012-050-247.dwg] [1012-050-248.dwg] [1012-050-249.dwg] [1012-050-250.dwg] [1012-050-251.dwg] [1012-050-252.dwg] [1012-050-253.dwg] [1012-050-254.dwg] [1012-050-255.dwg] [1012-050-256.dwg] [1012-050-25

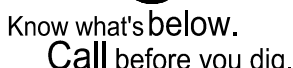


SHEET

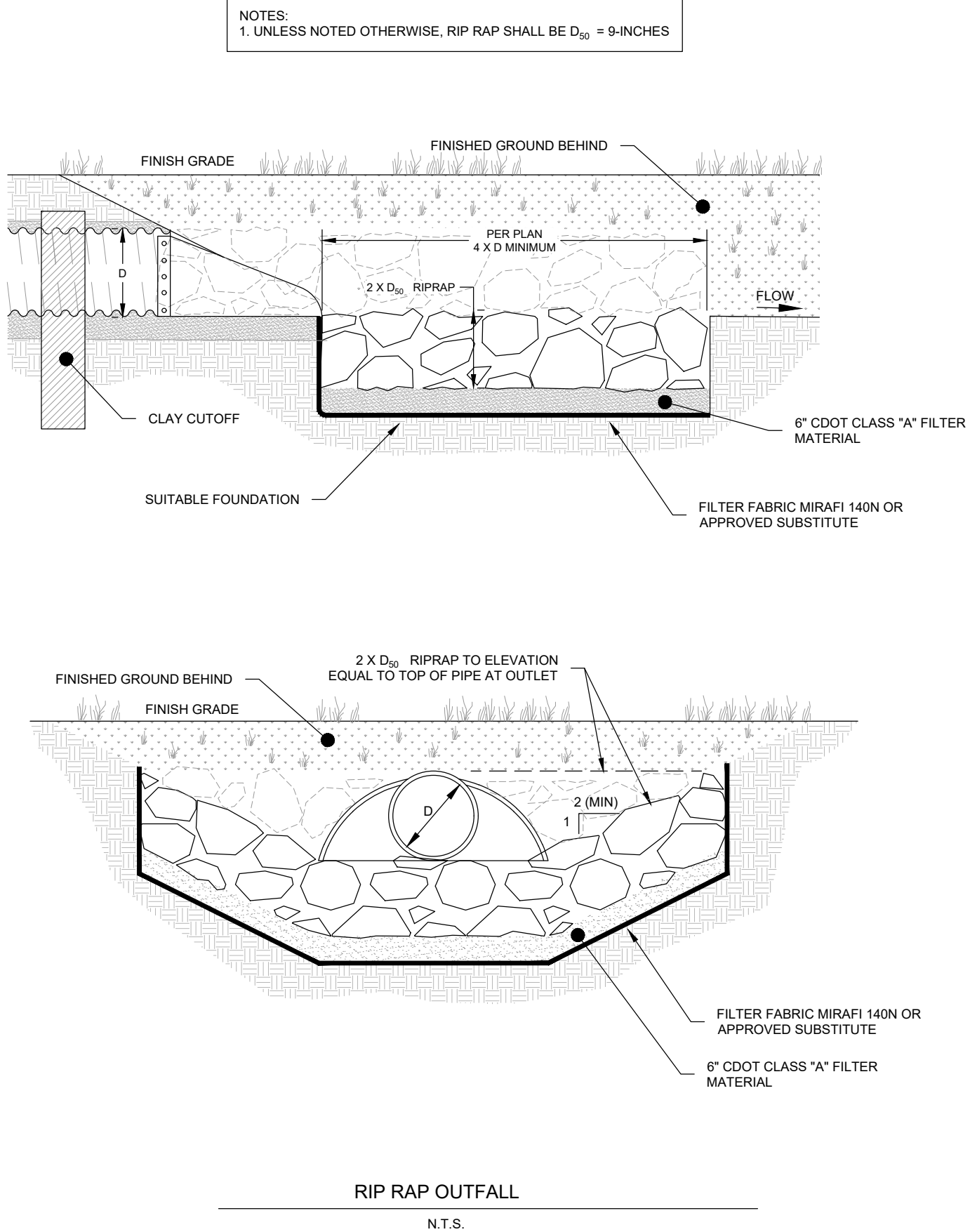
C.320



THE BOTTOM ELEVATION OF THE OUTLET STRUCTURE REFLECTS THE REQUIREMENTS OF THE PROPOSED STORM SEWER. ADDITIONAL CONCRETE REINFORCERS MAY BE REQUIRED AND CONTRACTOR TO INCLUDE CONSIDERATIONS FOR ADDITIONAL DEPTH AS MAY BE NECESSARY.



DRAWING FILENAME: P:\112-5620\New\Projects\Drawings\2017\112-5620-CC-550-Details.rvt LAYOUT NAME: C-550 DATE: 10-16-2022 1:35pm CAD OPERATOR: EJA
LIST OF REVISIONS: (4/6/2024) (C-550) (JACOBSON) (C-550)



granite

SEED

land erosion control

490 East 76th Ave., Unit A
Denver, Colorado 80229
Toll Free (888) 577-5650
Fax (555) 695-5450

QUOTE

Invoice Date:
15-Jun-20

Invoice Number: **3-47767**

(please show this invoice number on all payments)

Project: New Mountain Mix

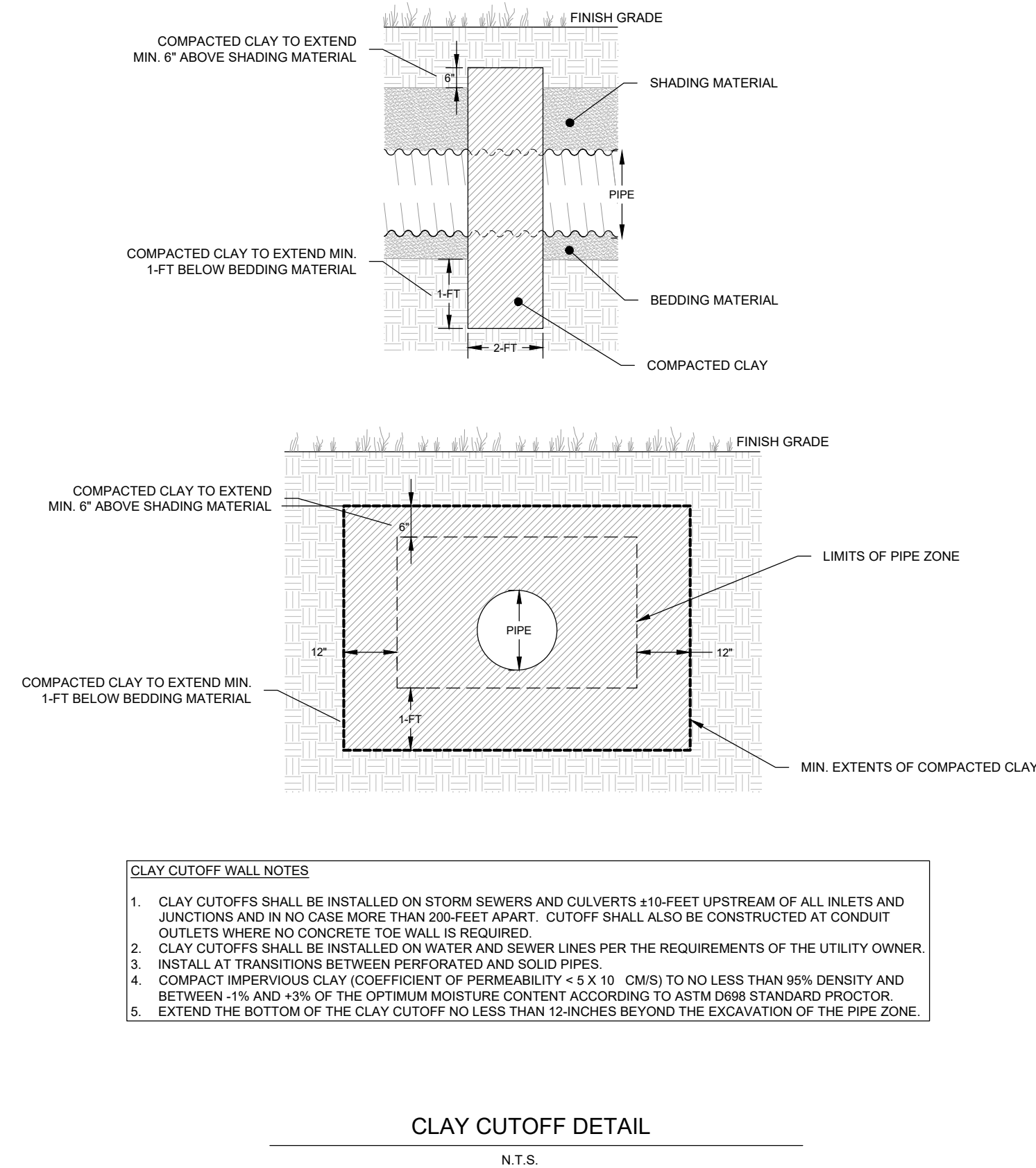
Sold To:
Steamboat Ski Resort
2305 Mt. Werner
Steamboat Springs, CO 80487

Ship To:
Steamboat Ski Resort
3150 Burgess Creek Road
Steamboat Springs, CO 80487

Terms:	Net 30	Customer P.O.:		Ordered By:		Phone Number:	970-871-5604	Customer Number:	CO155663
Shipper:	UPS	Freight: Prepaid/Collect	Prepaid	FOB:	Origin	Sales Rep:	Miranda McCutchen	Date Shipped:	

Quantity Shipped					
Pricing	PLS	Bulk	Description	Variety	Price Total
*** MIX # 207563 New Mountain Mix ***					
PLS #	2.50	2.75	Poa sandbergii Bluegrass, Sandberg	High Plains	
PLS #	1.00	1.00	Koeleria macrantha Prairie junegrass	UP Sims Mesa	
PLS #	11.00	11.00	Elymus elymoides Bottlebrush squirreltail	Pueblo	
PLS #	20.00	20.00	Pascopyrum smithii Western wheatgrass	Arriba	
PLS #	15.50	15.50	Pseudoroegneria spicata ssp. spicata Bluebunch wheatgrass	Columbia	
PLS #	40.00	40.00	Triticum aestivum x Secale cereale Triticale	Quickguard	

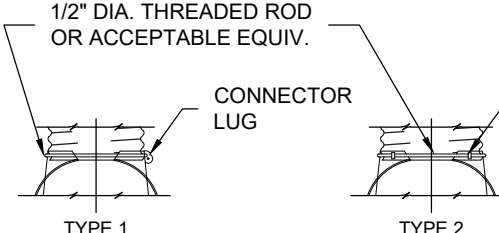
REVEGETATION SEED MIX



METAL END SECTION NOTES

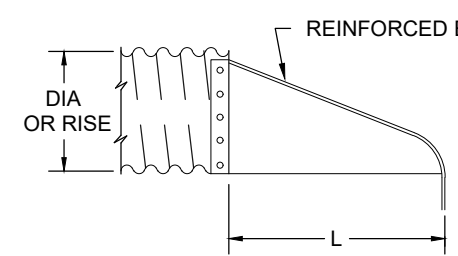
- DIMENSIONS OF END SECTIONS MAY VARY SLIGHTLY FROM THOSE SHOWN ON THE TABLES DUE TO DIFFERENT MANUFACTURER'S VARIATIONS.
- END SECTIONS FOR CMP ARCH CULVERT SHALL MATCH THE DIMENSIONS OF THE CULVERT SHOWN ON THE PLANS.
- GALVANIZED TOE PLATE, AS SHOWN, REQUIRED ON END SECTIONS FOR ALL THIN WALL PIPE AND SHALL BE THE SAME THICKNESS AS END SECTIONS. TOE PLATE SHALL BE FIELD-BOLTED TO END SECTION WITH 3/8" GALVANIZED BOLTS, NUTS AND WASHERS.
- GALVANIZED STEEL SHALL BE IN CONFORMANCE WITH AASHTO M 111, M 216 OR M 232.

THIN-WALL ROUND PIPE							
PIPE DIA.	THICK.	DIMENSIONS					
		A	B	H	L	W	T
		(inches)					
12	0.064	6	6	6	21	24	34
18	0.064	8	10	6	31	36	46
21	0.064	9	12	6	36	42	52
24	0.064	10	13	6	41	48	58
30	0.079	12	16	6	51	60	70
36	0.079	14	19	9	60	72	84
42	0.109	16	22	11	69	84	106
48	0.109	18	27	12	78	90	112
54	0.109	18	30	12	84	102	124
60	0.109	18	33	12	87	114	136
66	0.109	18	36	12	87	120	142
72	0.109	18	39	12	87	126	148
78	0.109	18	42	12	87	132	154
84	0.109	18	45	12	87	138	160



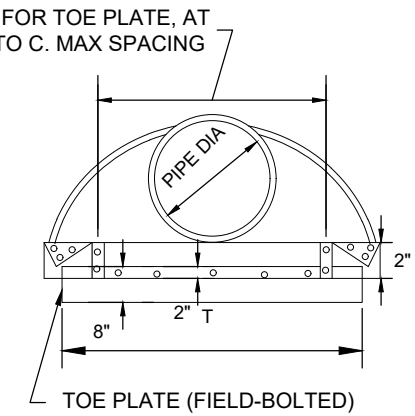
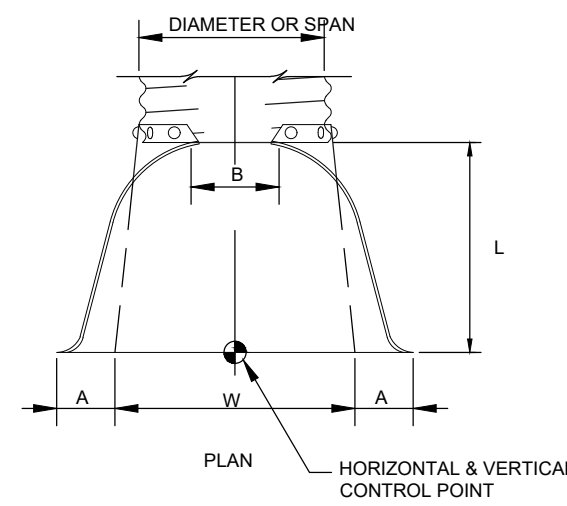
FOR 18 IN. THRU 24 IN. ROUND PIPE WITH ANNULAR CORRUGATIONS. NOT TO BE USED ON HELICALLY FORMED PIPE UNLESS RECORRUGATED.

FOR 30 IN. THRU 36 IN. ROUND PIPE WITH ANNULAR CORRUGATIONS. NOT TO BE USED ON HELICALLY FORMED PIPE UNLESS RECORRUGATED.



END SECTION AND CONNECTION DETAILS FOR THIN WALL PIPE CULVERTS

FLARED END SECTION
N.T.S.



WILD BLUE GONDOLA

CIVIL CONSTRUCTION DETAILS

SHEET
C.500

CIVIL ENGINEERS | SURVEYORS
141 9th Street -- P.O. Box 774943
Steamboat Springs, Colorado 80477
(970) 871-9494
www.LANDMARK-co.com



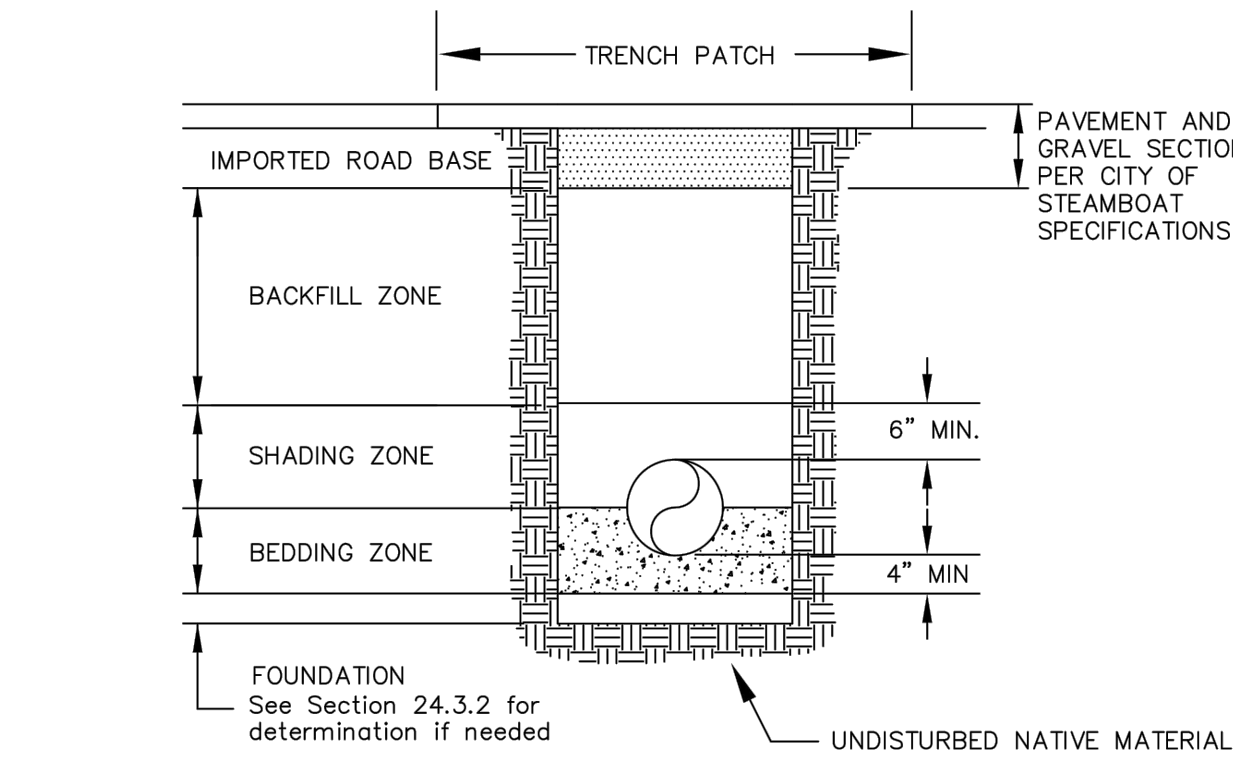
These drawings are the property of Landmark Consultants, Inc. and are not to be reproduced, stored in a retrieval system, or transmitted in any form or by any means, electronic, mechanical, photocopying, recording, or by any information storage and retrieval system, without the prior written permission of Landmark Consultants, Inc.

DESCRIPTION:		BY:	DATE:	NO.
ADD/2 PERMIT RESPONSE		EG	3-16-22	2

PROJECT:	1015-550
DATE:	2022
CONTACT:	Grip
EMAIL:	efg@landmark-co.com



DRAWING FILENAME: P:\1125620\Drawings\Drawings\1125620\02-C550-Details.dwg LAYOUT NAME: C550 DATE: 04/03/2012 2:10 PM CDR OPERATOR: WJL
LIST OF REVISIONS: (4/03/2012)



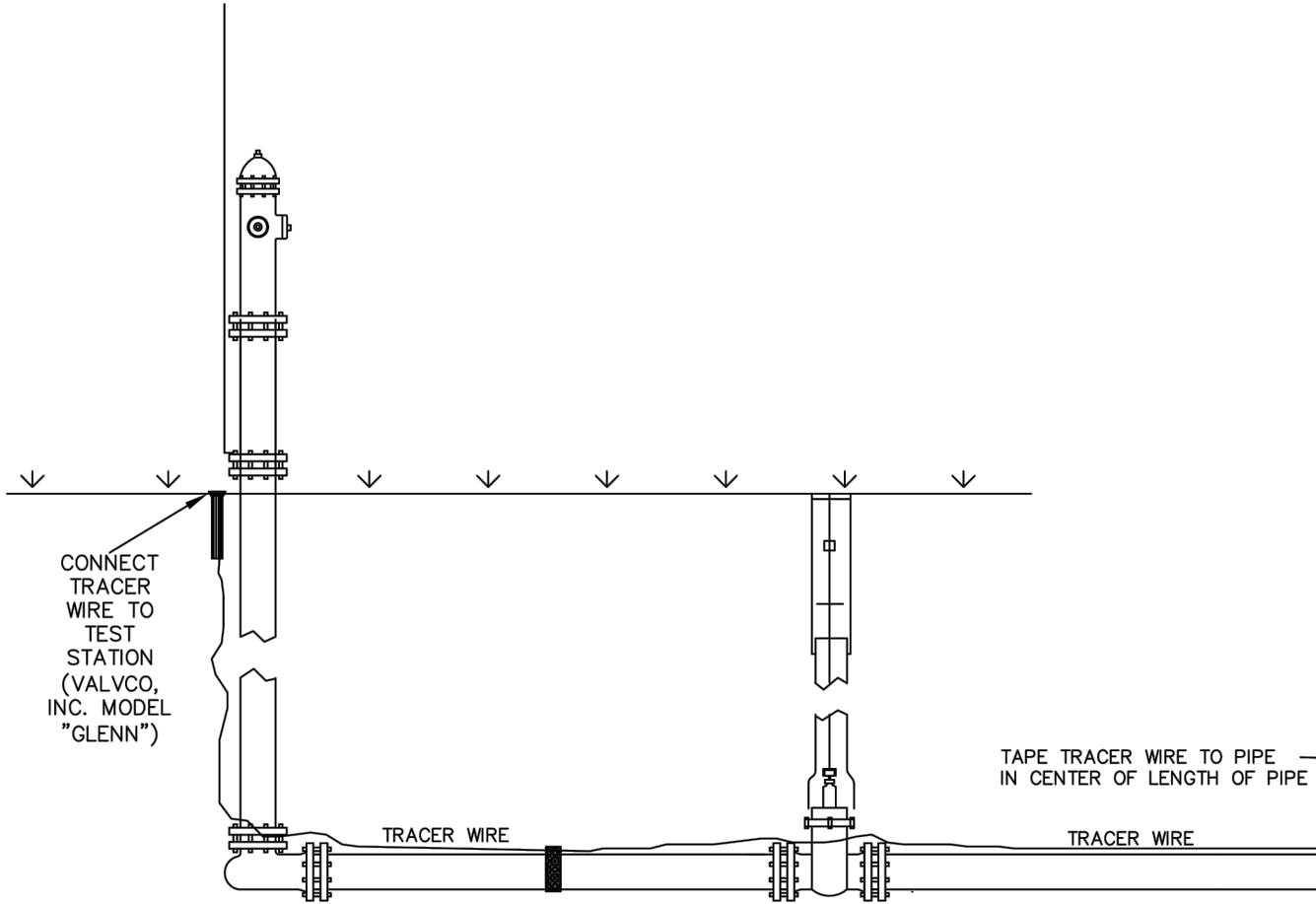
2. Added Pmnt. Sect. Note: 11/08
1. Changed Company Name 1/00
REVISION HISTORY:

Mount Werner Water

P.O. Box 880339
3310 Clear Water Trail
Steamboat Springs, CO 80488
(970) 879-2424 fax (970) 879-8169

TRENCH CROSS SECTION
AND PIPE EMBEDMENT DETAIL

DRAWN BY: RBS DATE: 2/2003
SCALE: NONE
SHEET: 1



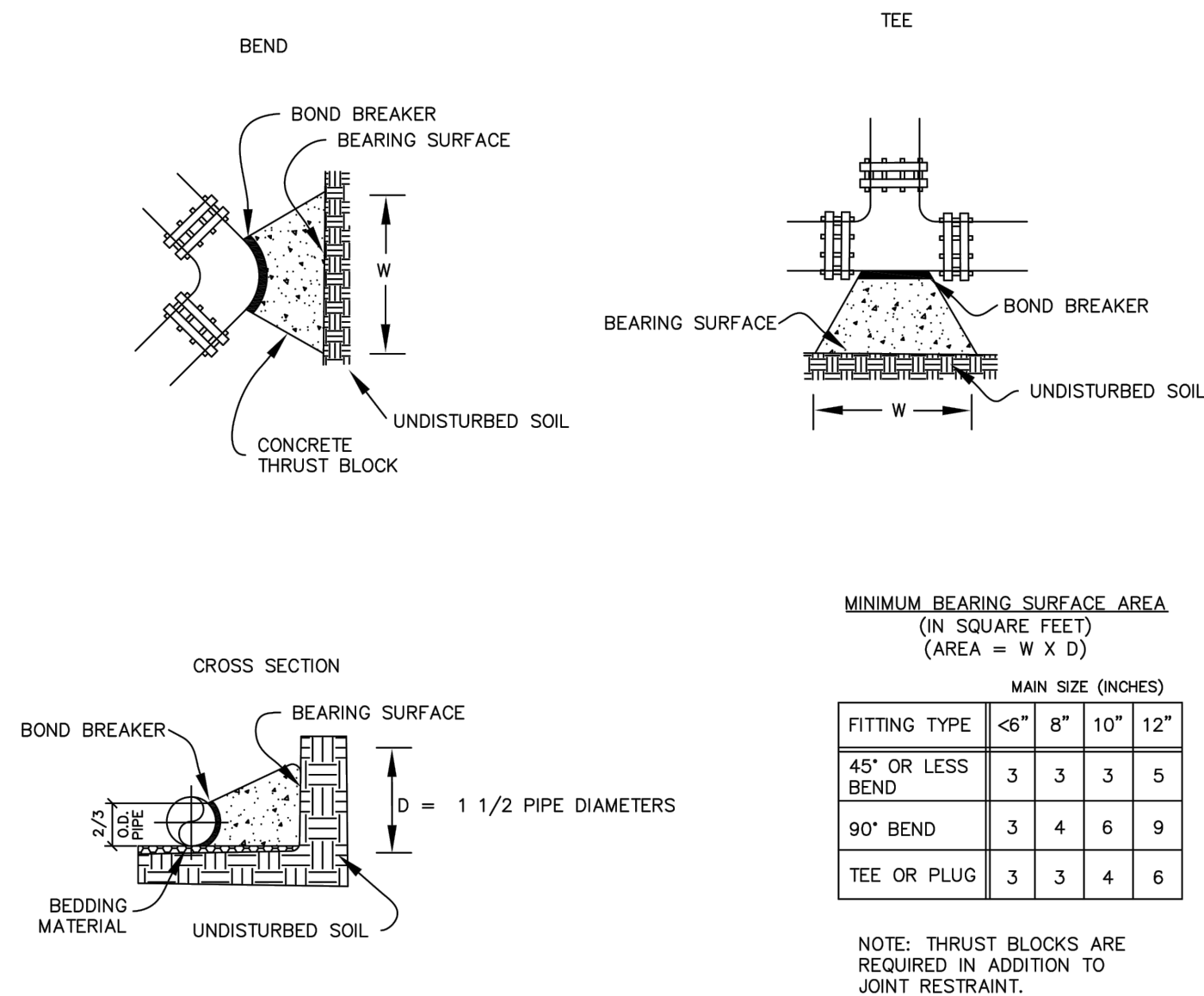
1. Initial release 2/04
REVISION HISTORY:

Mount Werner Water

P.O. Box 880339
3310 Clear Water Trail
Steamboat Springs, CO 80488
(970) 879-2424 fax (970) 879-8169

TRACER WIRE
INSTALLATION DETAIL

DRAWN BY: RBS DATE: 2/2004
SCALE: NONE
SHEET: 17



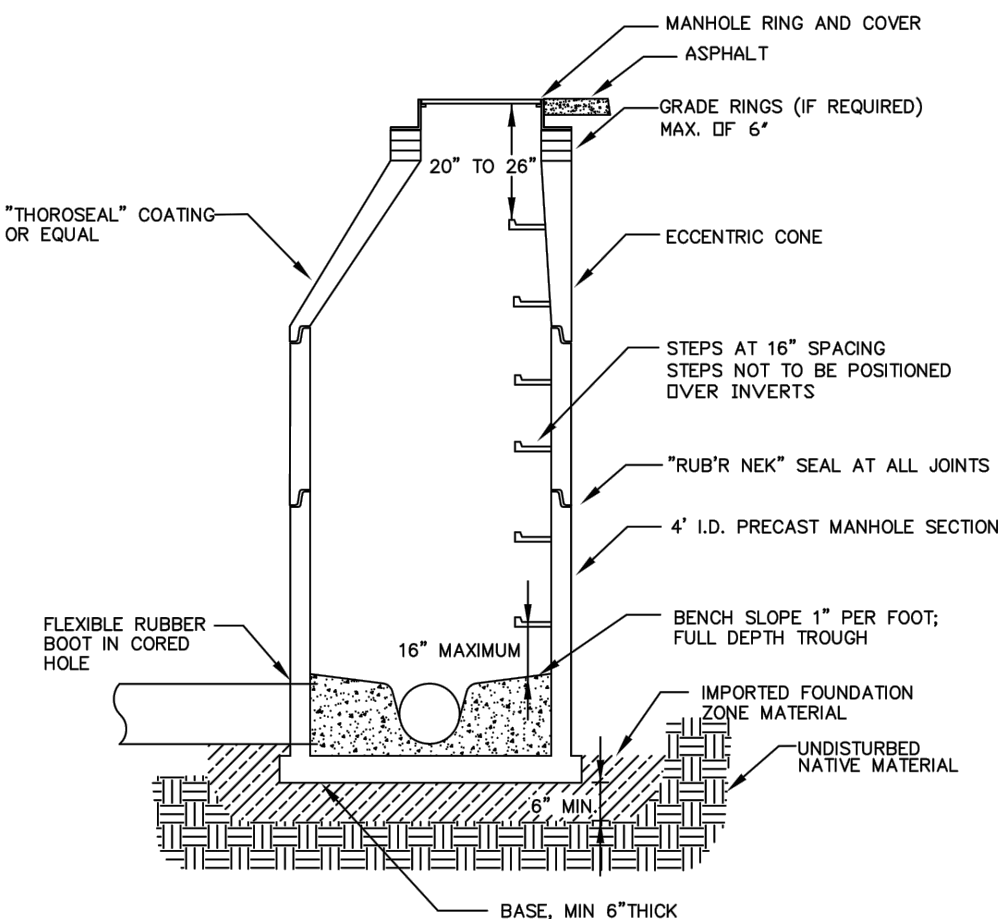
2. Added Notes: 11/08
1. Changed Company Name 1/00
REVISION HISTORY:

Mount Werner Water

P.O. Box 880339
3310 Clear Water Trail
Steamboat Springs, CO 80488
(970) 879-2424 fax (970) 879-8169

THRUST BLOCK
DETAIL

DRAWN BY: RBS DATE: 2/2003
SCALE: NONE
SHEET: 4



NOTE:
RUB'R NEK SEALS AT ALL JOINTS, INCLUDING CASTING TO GRADE RINGS, BETWEEN ALL GRADE RINGS AND AT ALL PRECAST JOINTS.

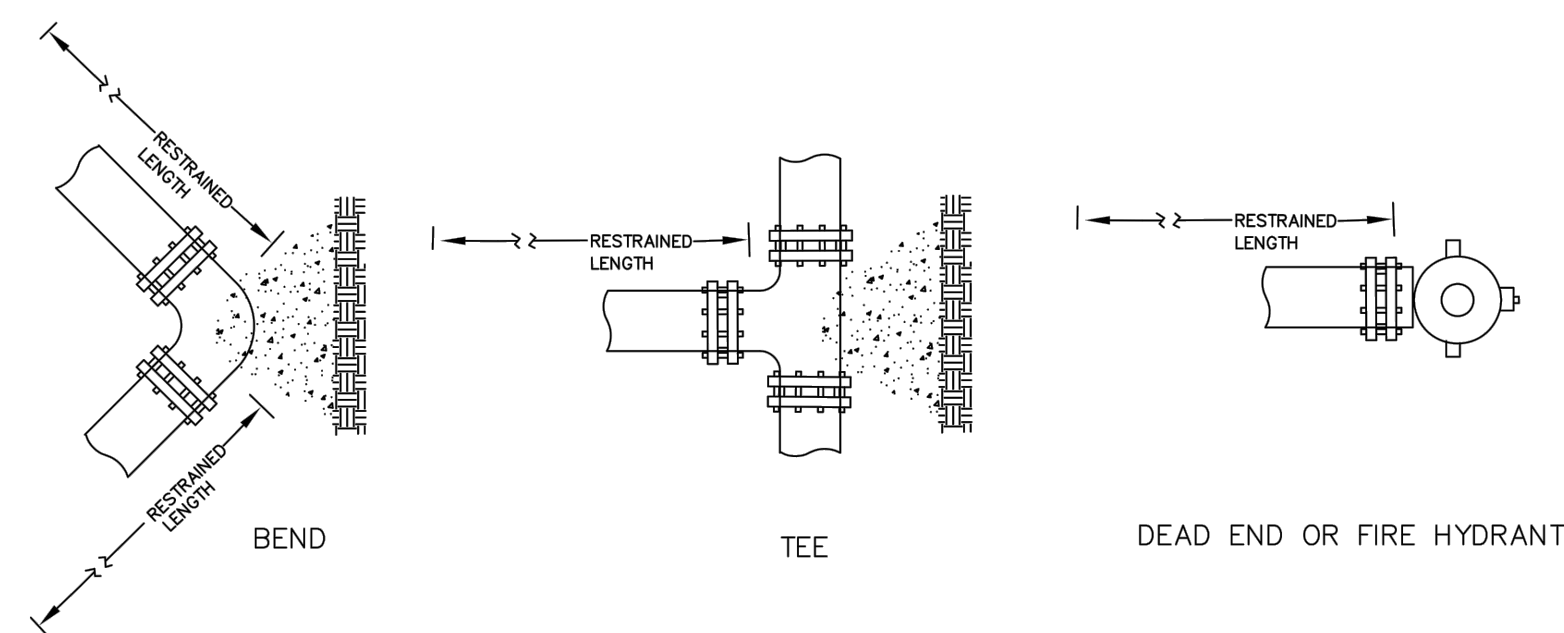
2. Added Note: 11/08
1. Revised MH Trough: 5/07
REVISION HISTORY:

Mount Werner Water

P.O. Box 880339
3310 Clear Water Trail
Steamboat Springs, CO 80488
(970) 879-2424 fax (970) 879-8169

STANDARD MANHOLE
CROSS SECTION DETAIL

DRAWN BY: RBS DATE: 2/2003
SCALE: NONE
SHEET: 8



MAIN SIZE (INCHES)					
FITTING TYPE	4"	6"	8"	10"	12"
90° BEND, BRANCH OF TEE, OR DEAD END	30'	45'	60'	73'	86'
45° BEND	18'	18'	18'	21'	25'
22 1/2° BEND	18'	18'	18'	18'	18'
11 1/4° BEND	18'	18'	18'	18'	18'

NOTE: THRUST BLOCKS ARE REQUIRED IN ADDITION TO JOINT RESTRAINT.

2. Changed Restraint Lengths: 11/08
1. Changed Company Name 1/00
REVISION HISTORY:

Mount Werner Water

P.O. Box 880339
3310 Clear Water Trail
Steamboat Springs, CO 80488
(970) 879-2424 fax (970) 879-8169

PIPE RESTRAINT
DETAIL

DRAWN BY: RBS DATE: 2/2003
SCALE: NONE
SHEET: 3

TABLE OF DIMENSIONS					
PIPE SIZE NOMINAL DIAMETER - INCH	VERTICAL BEND DEGREES	NO. OF CL. YD. OF CONC. BLOCKING	DIAMETER OF REBAR, "INCH	DEPTH OF BASE IN CONCRETE, "INCH	FT.
4"	11-1/4°	5	5/8"	1.5	
	22-1/2°	10	5/8"	2.0	
6"	11-1/4°	11	5/8"	2.0	
	22-1/2°	22	5/8"	2.0	
8"	11-1/4°	20	5/8"	2.0	
	22-1/2°	39	5/8"	2.0	
12"	11-1/4°	45	3/4"	2.0	
	22-1/2°	88	3/4"	3.0	
16"	11-1/4°	79	3/4"	3.0	
	22-1/2°	156	3/4"	4.0	
20"	11-1/4°	123	3/4"	3.5	
	22-1/2°	243	1"	4.0	
24"	11-1/4°	177	3/4"	4.0	
	22-1/2°	350	1"	4.0	
30"	11-1/4°	277	1"	4.0	
	22-1/2°	546	1-1/4"	4.0	

NOTES:
1. THRUST BLOCKS ARE REQUIRED IN ADDITION TO JOINT RESTRAINT.
2. SPECIAL REQUIREMENTS:
a. THRUST BLOCKS FOR PIPE SIZES OR CONFIGURATIONS NOT SHOWN REQUIRE SPECIAL DESIGN.
b. BEARING AREAS, VOLUMES, AND SPECIAL THRUST BLOCKING DETAILS SHOWN ON DRAWINGS TAKE PRECEDENCE OVER THIS TYPICAL DETAIL.
c. REINFORCING STEEL BARS TO BE EPOXY COATED, AT LEAST 15 MILES THICK MINIMUM YIELD STRENGTH OF REBAR IS 60,000 PSI.
d. RESTRAINT SIZING IS BASED UPON A MAXIMUM OPERATING PRESSURE OF 150 PSI, A TEST PRESSURE OF 200 PSI, AND A MINIMUM SOIL BEARING STRENGTH OF 2000 PSF. OPERATING PRESSURES IN EXCESS OF 150 PSI OR SOILS WITH LESS THAN 2000 PSF BEARING STRENGTH WILL REQUIRE SPECIAL DESIGN.
3. FOR VERTICAL UNDER-BEND FOLLOW HORIZONTAL THRUST BLOCK DETAIL

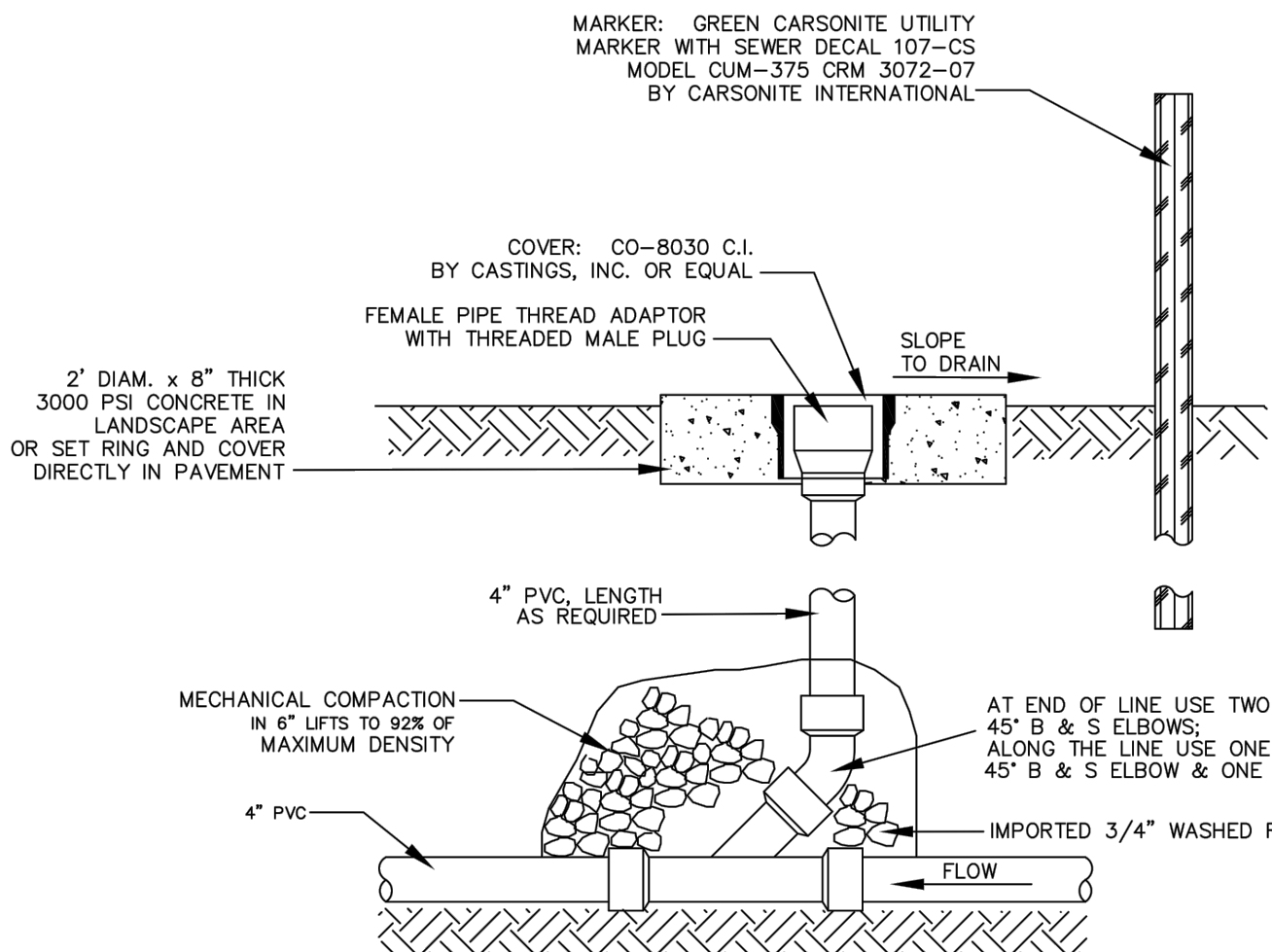
1. Initial Release 3/07
REVISION HISTORY:

Mount Werner Water

P.O. Box 880339
3310 Clear Water Trail
Steamboat Springs, CO 80488
(970) 879-2424 fax (970) 879-8169

VERTICAL THRUST BLOCK
DETAIL

DRAWN BY: CL, RM DATE: 2/2003
SCALE: NONE
SHEET: 5



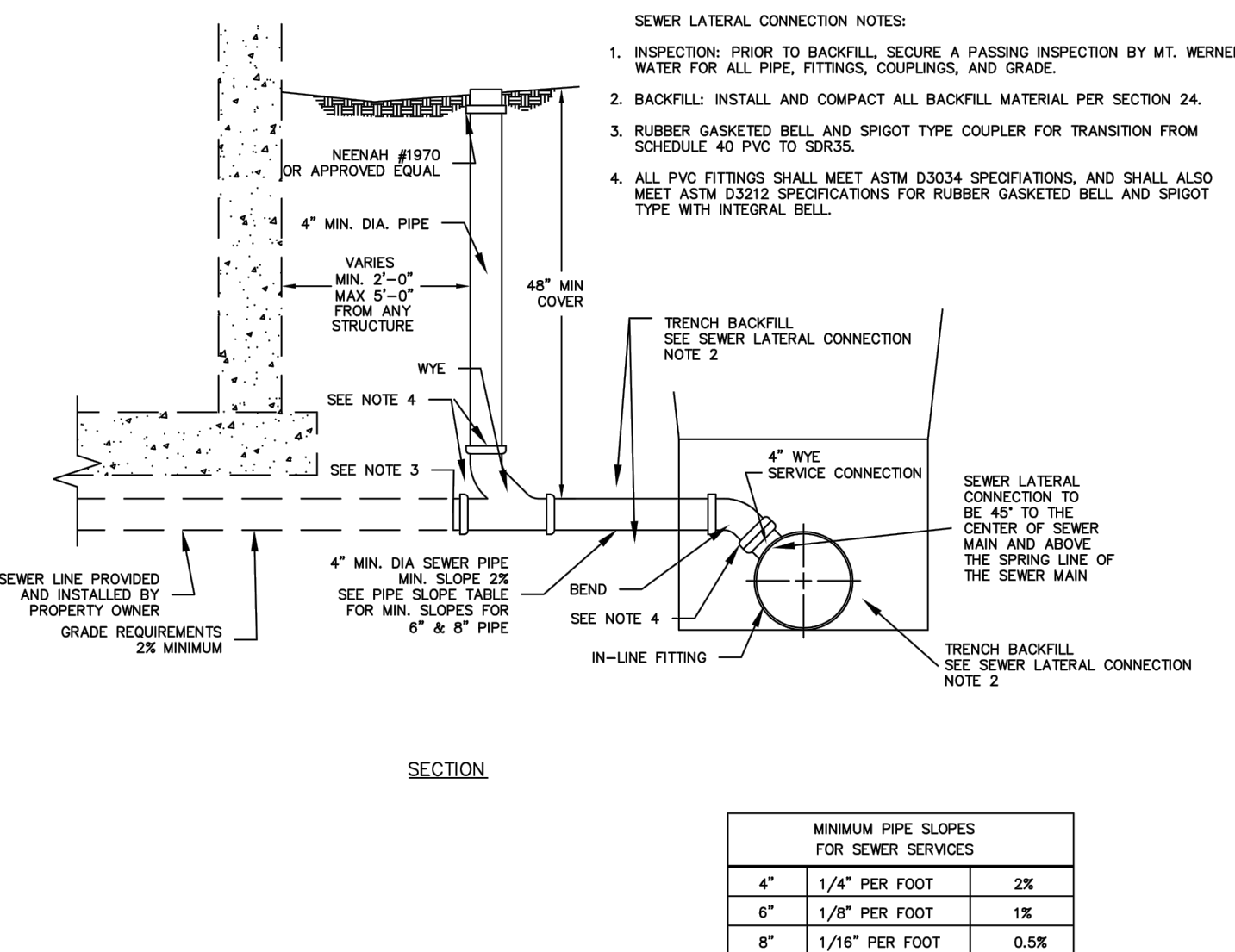
1. Original Release 7/01
REVISION HISTORY:

Mount Werner Water

P.O. Box 880339
3310 Clear Water Trail
Steamboat Springs, CO 80488
(970) 879-2424 fax (970) 879-8169

SEWER CLEANOUT DETAIL

DRAWN BY: RBS DATE: 2/2003
SCALE: NONE
SHEET: 12



MINIMUM PIPE SLOPES FOR SEWER SERVICES		
4"	1/4" PER FOOT	2%
6"	1/8" PER FOOT	1%
8"	1/16" PER FOOT	0.5%

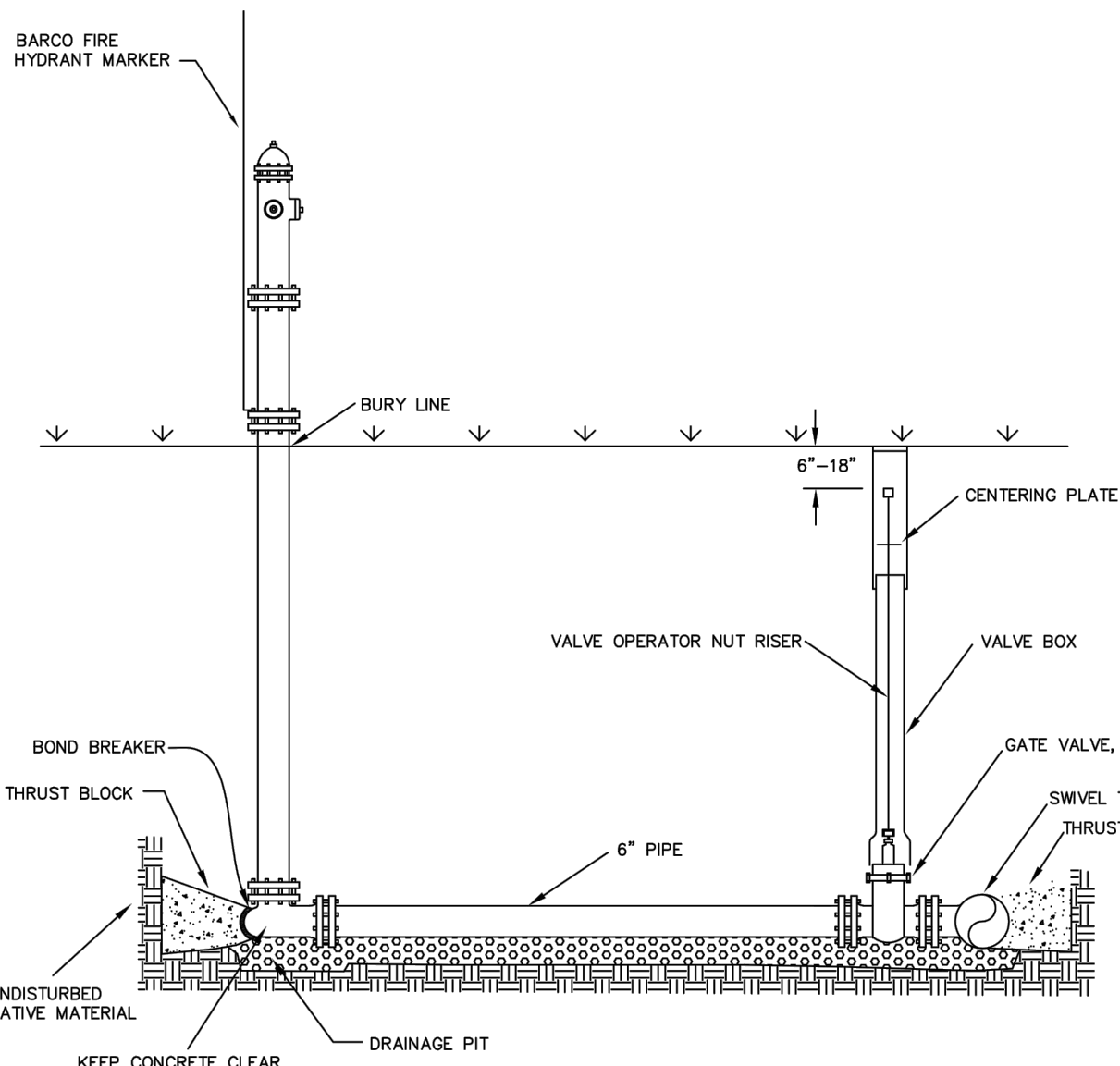
1. Original Release 11/08
REVISION HISTORY:

Mount Werner Water

P.O. Box 880339
3310 Clear Water Trail
Steamboat Springs, CO 80488
(970) 879-2424 fax (970) 879-8169

SERVICE LATERAL
CONNECTION DETAIL

DRAWN BY: RF DATE: 11/2008
SCALE: NONE
SHEET: 13



2. Added Riser Length: 11/08
1. Changed Company Name 1/00
REVISION HISTORY:

Mount Werner Water

P.O. Box 880339
3310 Clear Water Trail
Steamboat Springs, CO 80488
(970) 879-2424 fax (970) 879-8169

FIRE HYDRANT
DETAIL

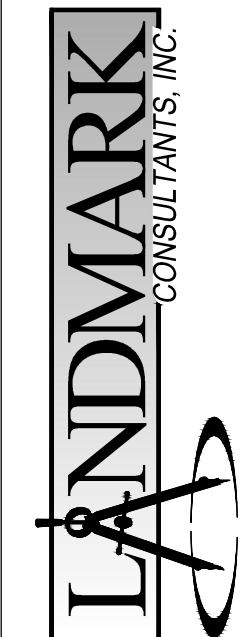
DRAWN BY: RBS DATE: 2/2003
SCALE: NONE
SHEET: 6

WILD BLUE GONDOLA

WWW DETAILS

SHEET
C.515

CIVIL ENGINEERS | SURVEYORS
141 9th Street - P.O. Box 774843
Steamboat Springs, Colorado 80477
(970) 879-2424
www.LANDMARK-CO.com



THESE DRAWINGS ARE PREPARED BY THE SURVEYORS PROVIDED BY LANDMARK CONSULTANTS, INC. AND ARE NOT TO BE USED FOR ANY OTHER CONSTRUCTION OR CONTRACTING UNLESS SIGNED AND SEALED BY A LICENSED PROFESSIONAL ENGINEER OR SURVEYOR EMPLOYED BY LANDMARK CONSULTANTS, INC.

DESCRIPTION		BY:		DATE:	
NO.					
PROJECT:	1012-550				
DATE:	2022				
CONTACT:	Grp				
EMAIL:	enr@landmarkco.com				

DRAWING FILENAME: P:\112-550\DWG\Drawings\Drawings\112-550-CC-C560-Details.rvt LAYOUT NAME: C516 DATE: 04.03.2022 - 2:10PM CAD OPERATOR: WIL
LIST OF REVISIONS: (4/03/2022)



WILD BLUE GONDOLA

FLOW MONITORING MANHOLE DETAIL

SHEET
C.516

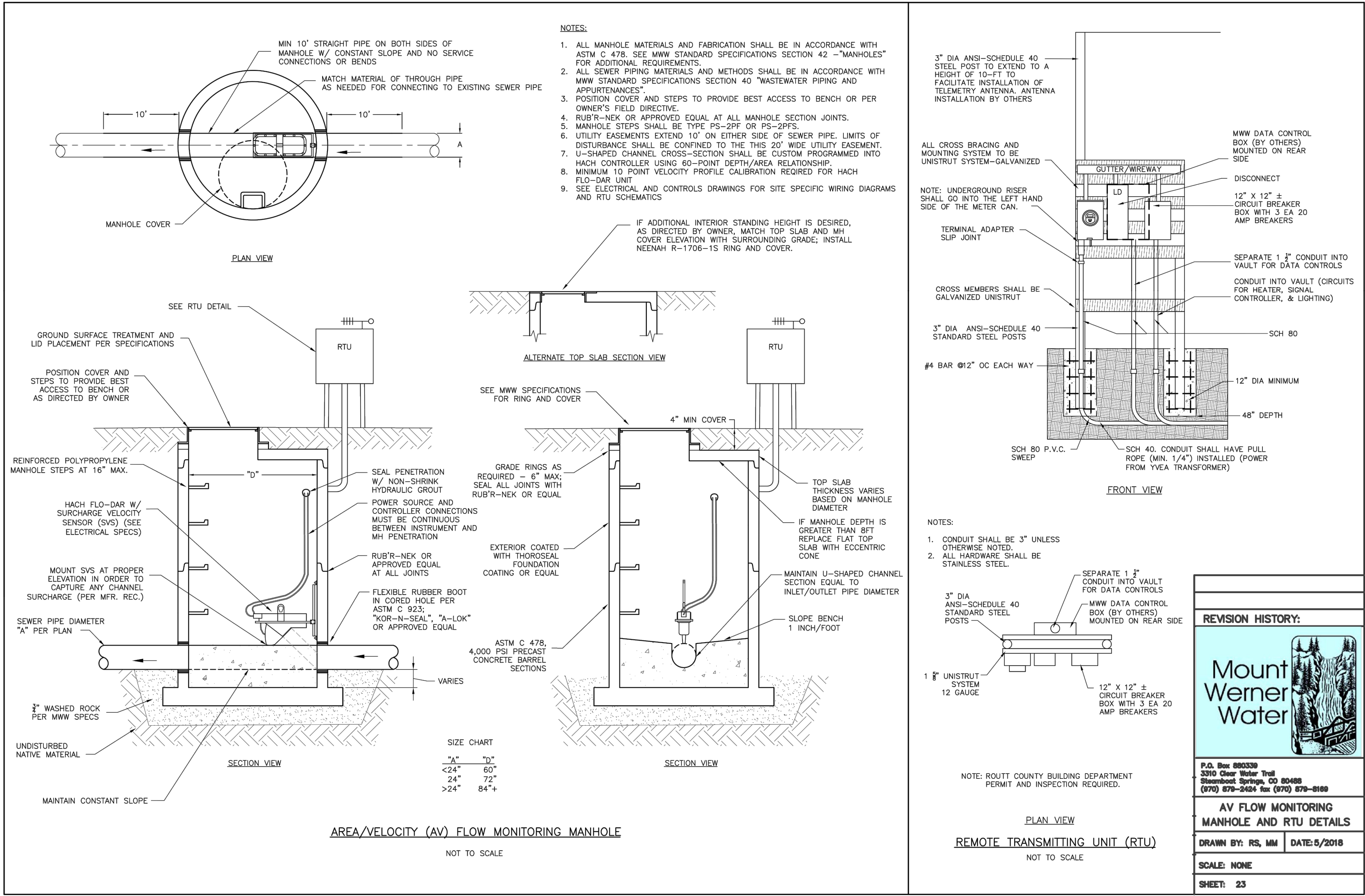
PROJECT: 1012-550
DATE: 2022
CONTACT: GWP
EMAIL: ewg@landmark-co.com

NO.		DESCRIPTION

THESE DRAWINGS ARE
THE PROPERTY OF LANDMARK
CONSULTANTS, INC. AND ARE NOT
TO BE REPRODUCED OR
TRANSMITTED IN ANY FORM OR
BY ANY MEANS, ELECTRONIC OR
MECHANICAL, INCLUDING
PHOTOCOPYING, RECORDING,
OR BY ANY INFORMATION
STORAGE AND RETRIEVAL
SYSTEM, WITHOUT THE
WRITTEN PERMISSION OF
LANDMARK CONSULTANTS,
INC.



CIVIL ENGINEERS | SURVEYORS
141 9th Street -- P.O. Box 774943
Steamboat, Colorado 80477
(970) 871-9349
www.LANDMARK-co.com



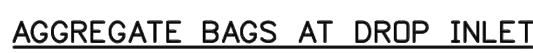
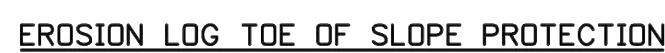
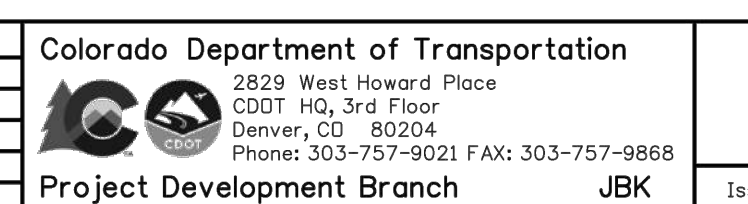
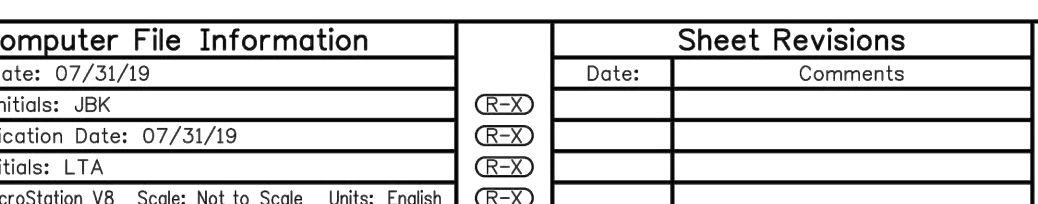
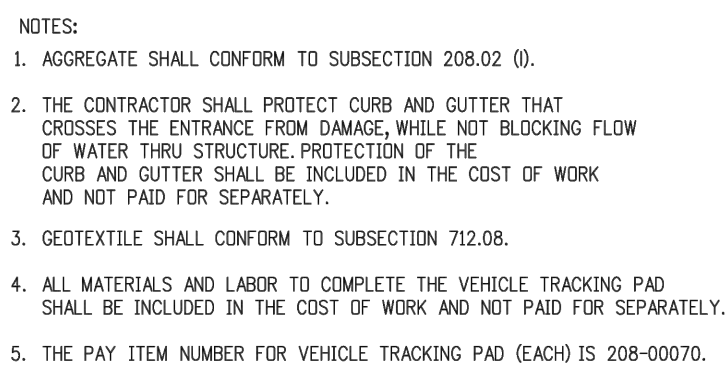
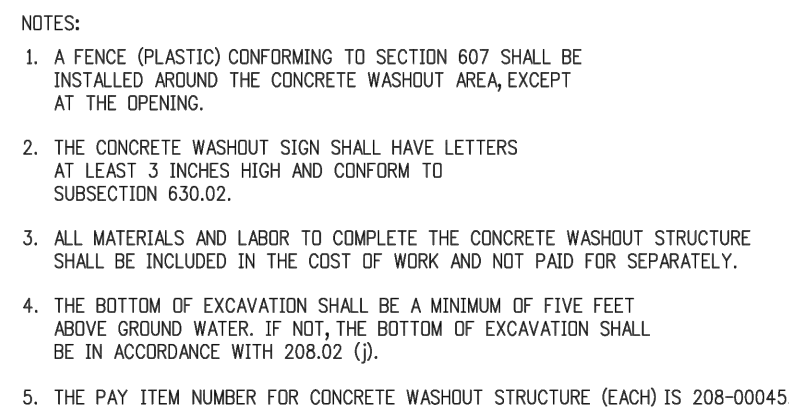
CALL UTILITY NOTIFICATION CENTER OF
COLORADO

811
CALL BEFORE YOU DIG

Know what's below.
Call before you dig.

CALL 2 BUSINESS DAYS IN ADVANCE BEFORE YOU
DIG, GRADE, OR EXCAVATE FOR THE MARKING OF
UNDERGROUND UTILITIES.

COLORADO LICENSED
J. GRIFFIN
33280
2-25-22
PROFESSIONAL ENGINEER



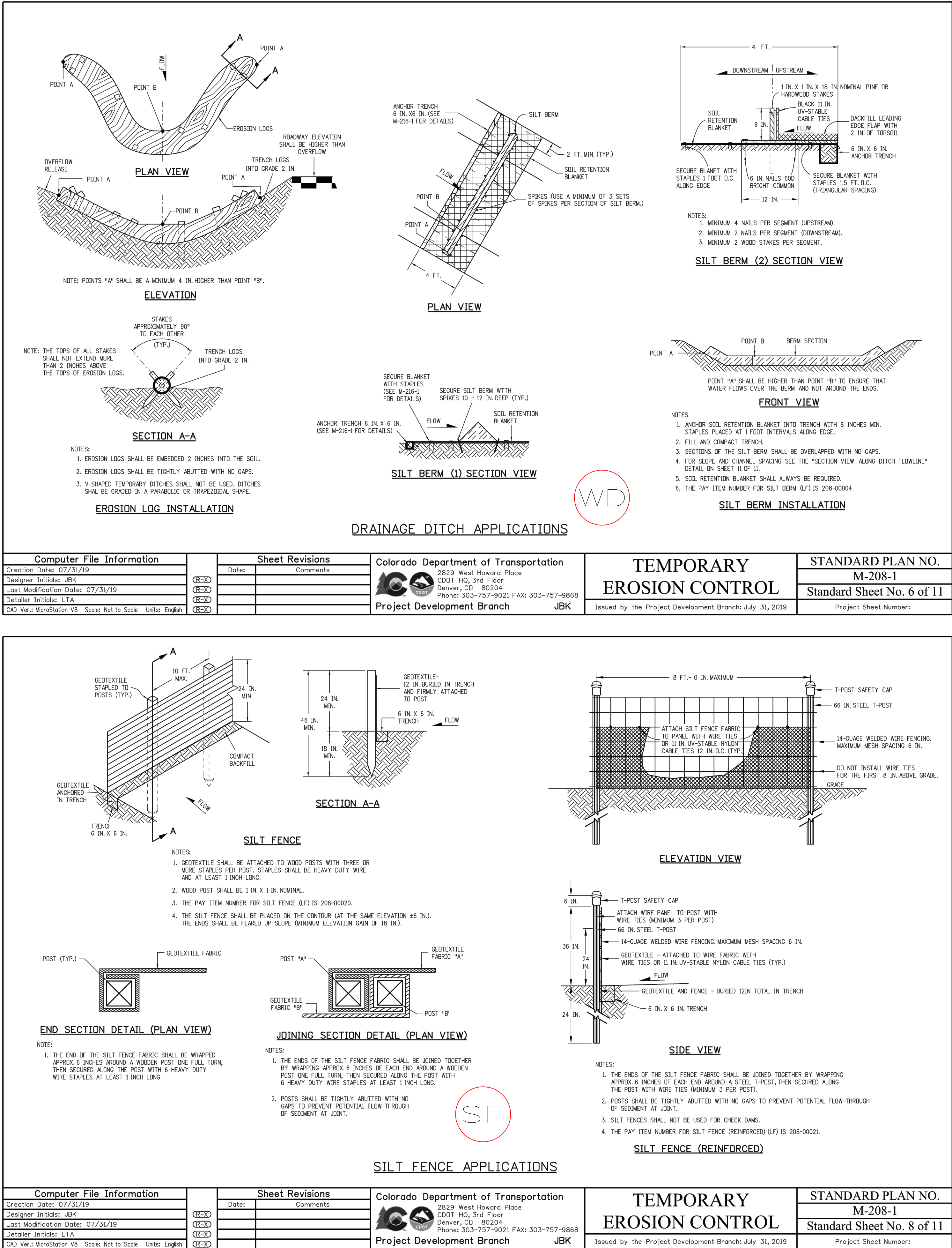
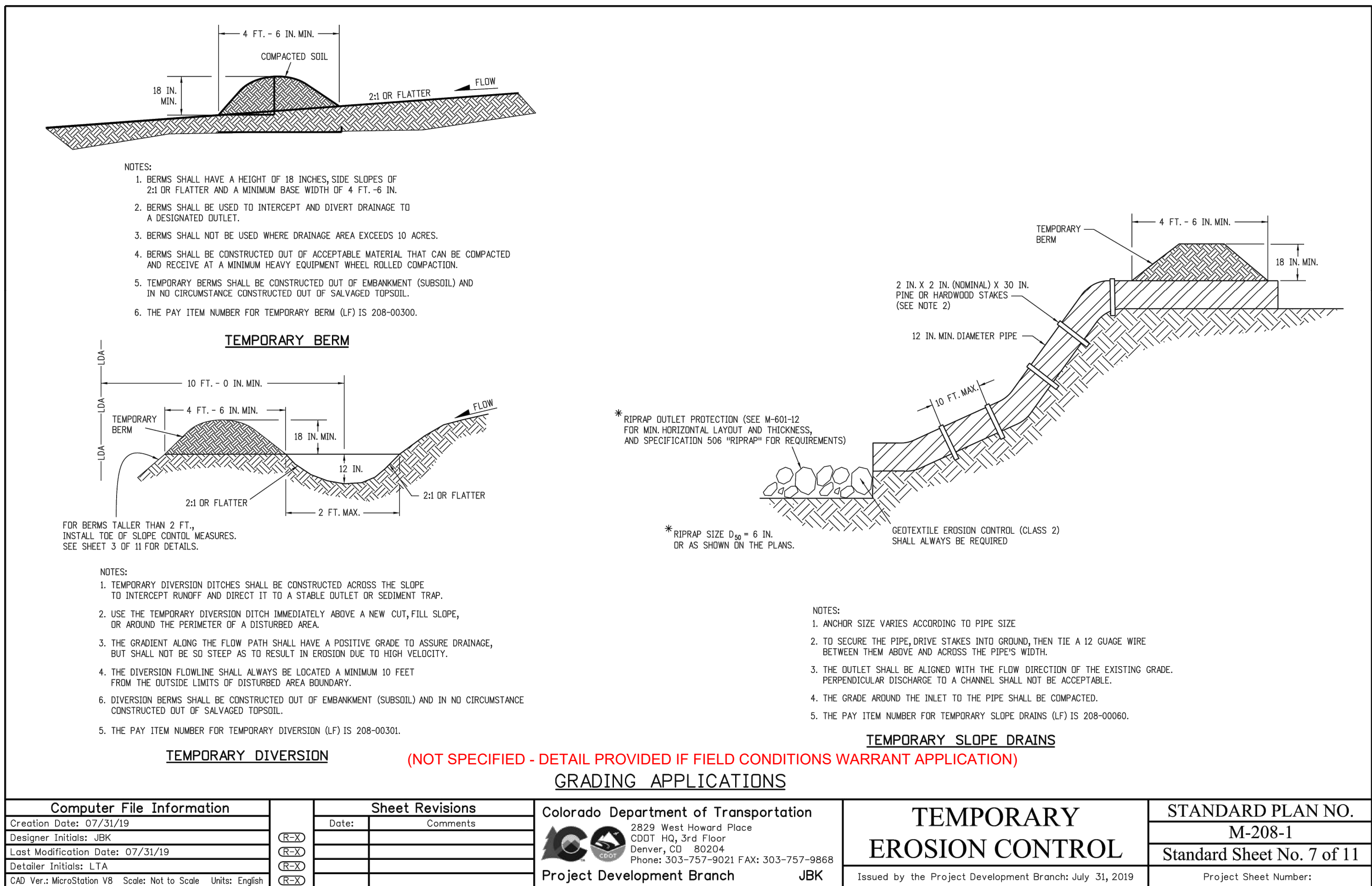
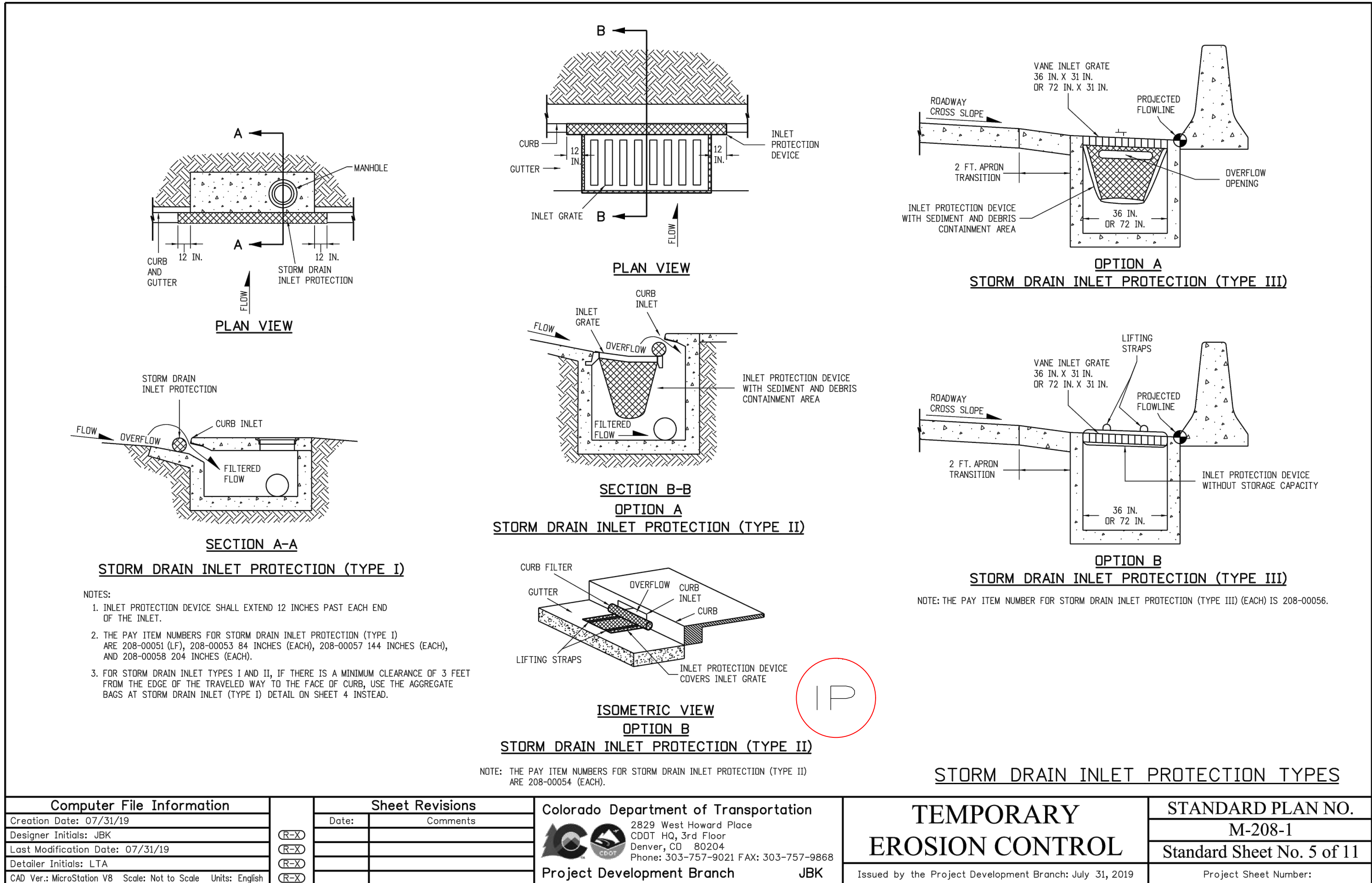
Computer File Information		Sheet Revisions		Colorado Department of Transportation		TEMPORARY		STANDARD PLAN NO.	
Creation Date: 07/31/19		Date: _____		2829 West Howard Place		EROSION CONTROL		M-208-1	
Designer: Initials: JKB		Comments: _____		3007 HQ, 3rd Floor				Standard Sheet No. 1 of 11	
Last Modification Date: 07/31/19				Denver, CO 80204					
Detailer Initials: LTA				Phone: 303-757-9021 FAX: 303-757-9868					
CAD Ver.: MicroStation V8 Scale: Not to Scale Units: English				Project Development Branch		JBK		Project Sheet Number: _____	
						Issued by the Project Development Branch: July 31, 2019			

Computer File Information		Sheet Revisions		Colorado Department of Transportation  2825 West Howard Place 2007 Ho, 3rd Floor Denver, CO 80204 Phone: 303-757-9021 FAX: 303-757-9868		TEMPORARY EROSION CONTROL		STANDARD PLAN NO. M-208-1	
Creation Date: 07/31/19		Date: _____		 Project Development Branch		Issued by the Project Development Branch: July 31, 2019		Standard Sheet No. 3 of 11 Project Sheet Number: _____	
Designer Initials: JBK		(X-Y)							
Last Modification Date: 07/31/19		(X-Y)							
Detailer Initials: LTA		(X-Y)							
CAD Ver.: MicroStation V8 Scale: Not to Scale Units: English		(X-Y)		JBK					

Computer File Information		Sheet Revisions		Colorado Department of Transportation		TEMPORARY EROSION CONTROL		STANDARD PLAN NO.	
Creation Date: 07/31/19	(X-3)	Date:	Comments		2829 West Howard Place	M-208-1			
Designer Initials: JBC	(X-3)				63071 HQ, 3rd Floor	Project Sheet No. 2 of 11			
Last Modification Date: 07/31/19	(X-3)				Denver, CO 80204				
Detailed Initials: LTA	(X-3)				Phone: 303-757-9021 FAX: 303-757-9868				
CAD Ver.: MicroStation V8	(X-3)	Scale: Not to Scale	Units: English	Project Development Branch		JBK		Issued by the Project Development Branch: July 31, 2019	
								Project Sheet Number:	

Computer File Information		Sheet Revisions		Colorado Department of Transportation		TEMPORARY		STANDARD PLAN NO.	
Creation Date: 07/31/19		Date:		 2825 West Howard Place 33071 HQ, 3rd Floor Denver, CO 80204 Phone: 303-757-9021 FAX: 303-757-9868		EROSION CONTROL		M-208-1	
Designer Initials: JBK		(X)(X)						Standard Sheet No. 4 of 11	
Last Modification Date: 07/31/19		(X)(X)							
Custodian Initials: LTA		(X)(X)							
CAD Ver.: MicroStation V8 Scale: Not to Scale Units: English		(X)(X)		Project Development Branch JBK		Issued by the Project Development Branch: July 31, 2019		Project Sheet Number:	

DRAWING FILENAME: P:\112-5820\Drawings\Drawings\112-5820-02-C-611 Erosion Details.dwg LAYOUT NAME: C611 DATE: Feb 10, 2022 2:23pm CAD OPERATOR: Wk
LIST OF REVISIONS: (see sheet 3 of 11 for details)



CALL UTILITY NOTIFICATION CENTER OF COLORADO



Know what's below.
Call before you dig.

CALL 2 BUSINESS DAYS IN ADVANCE BEFORE YOU DIG, GRADE, OR EXCAVATE FOR THE MARKING OF UNDERGROUND MEMBER UTILITIES



WILD BLUE GONDOLA
Temporary Erosion Control Details

SHEET
C.611

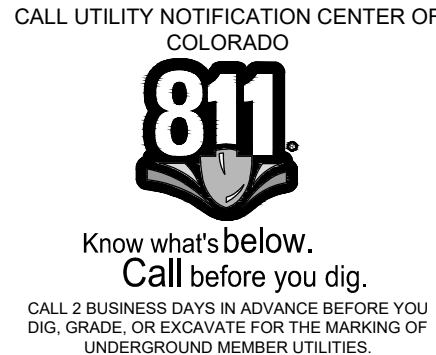
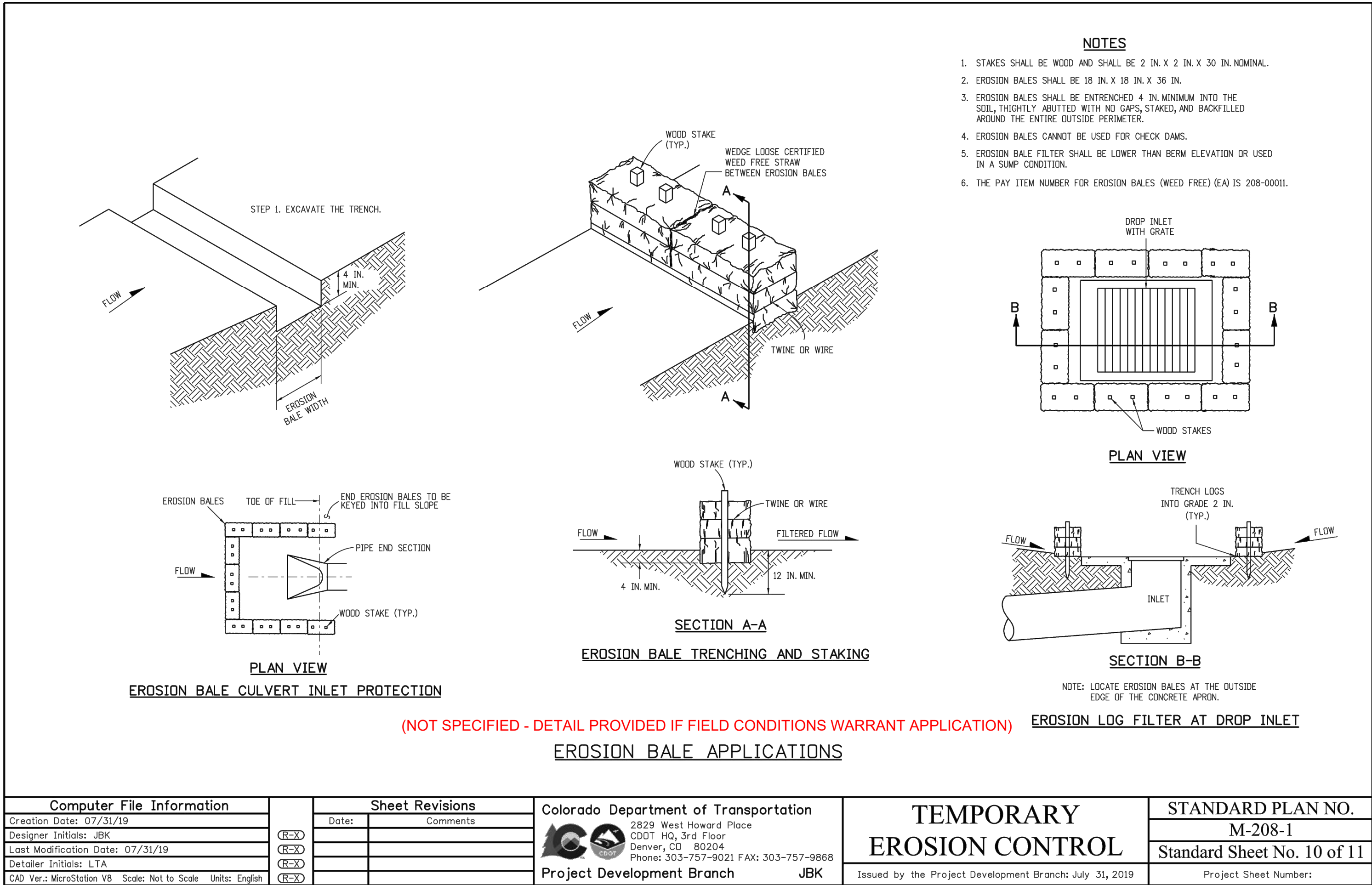
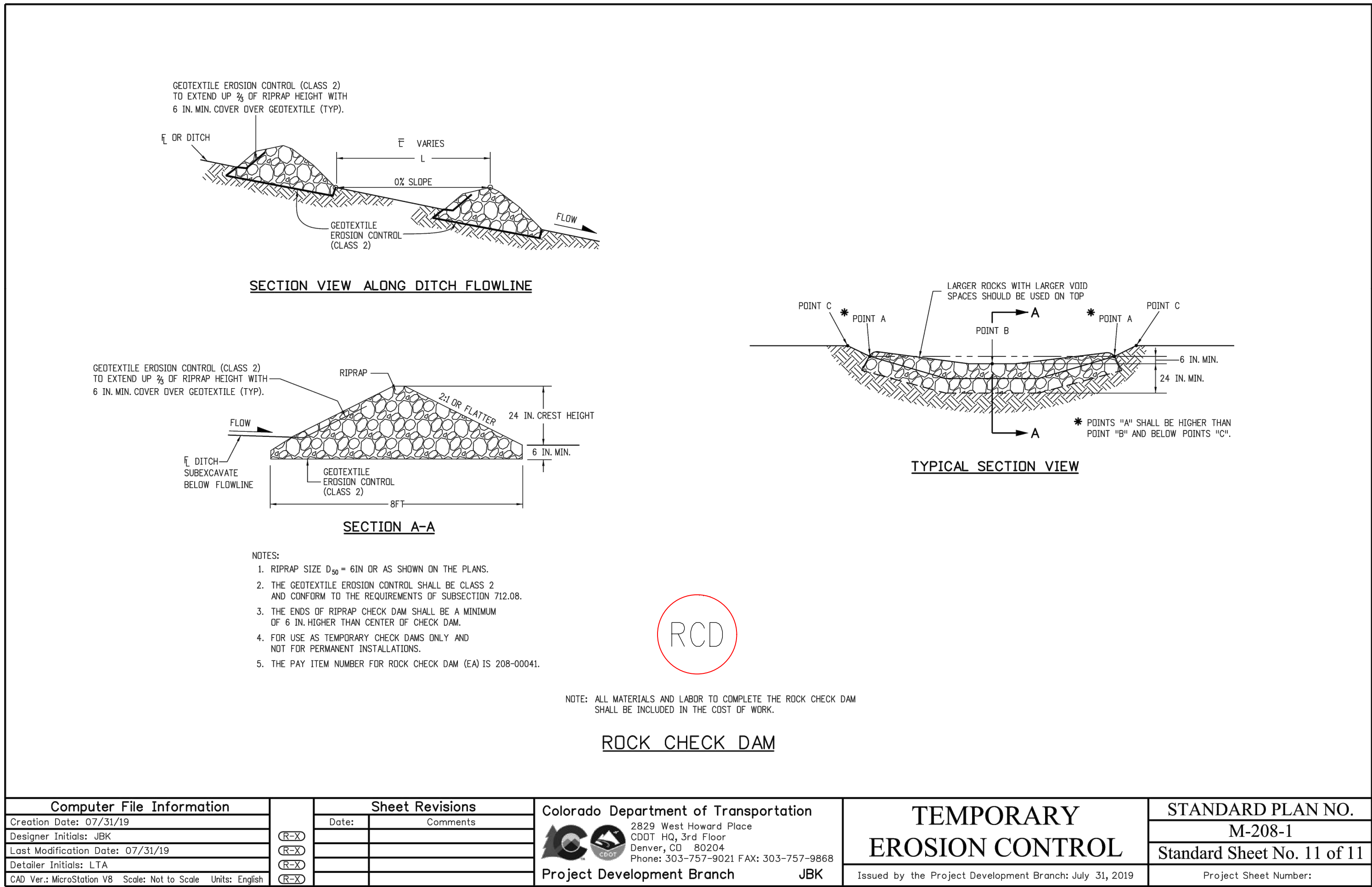
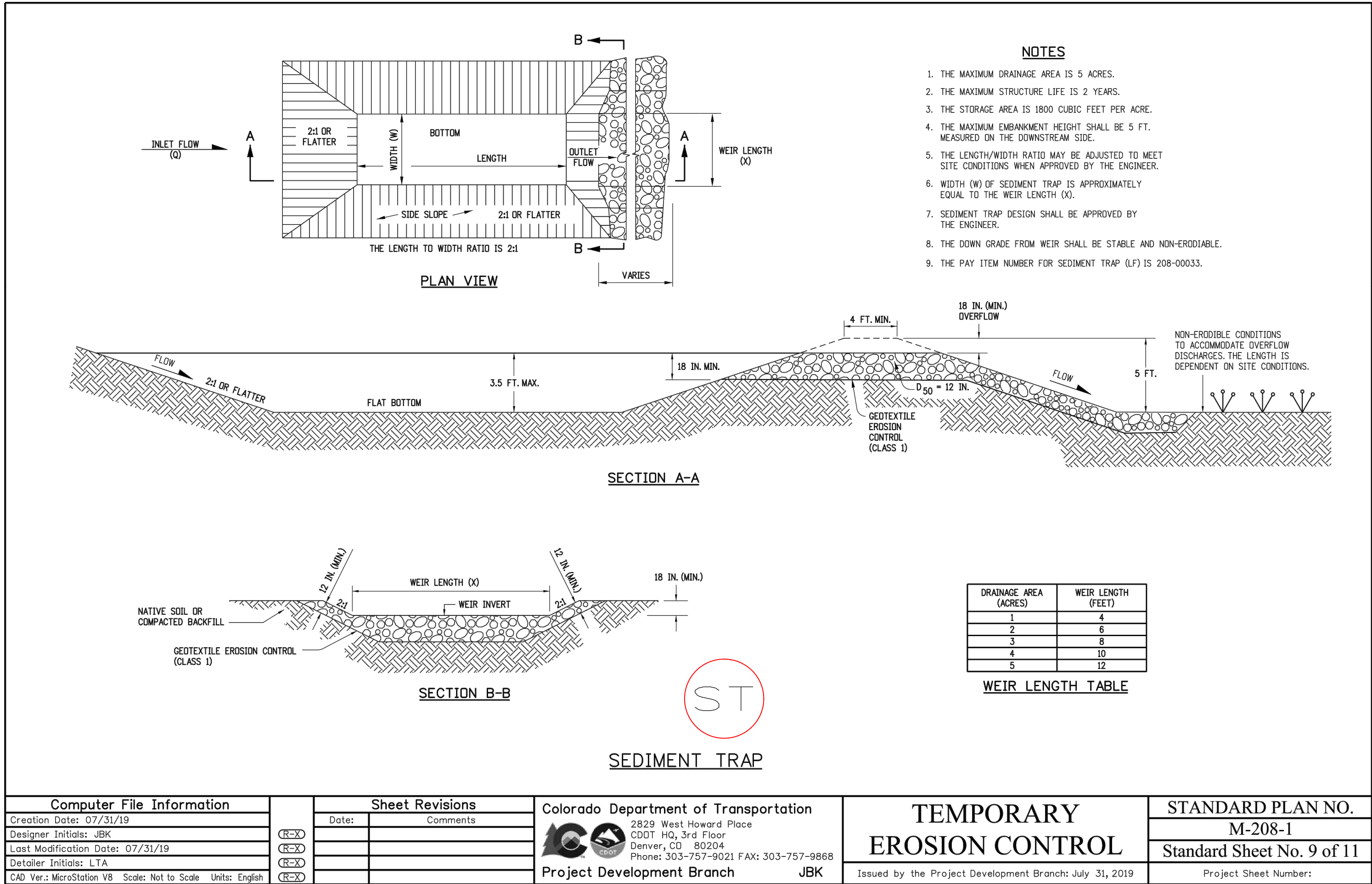
These drawings are for informational purposes only. They are not to be used for construction or contract purposes without the approval of Landmark Consultants, Inc. and are not to be used for any other purpose without the written consent of Landmark Consultants, Inc.

NO.	DESCRIPTION	DATE	BY
1012-550	PROJECT:	2022	Grip
	DATE:		
	CONTACT:		
	EMAIL: erik@landmarkco.com		

CIVIL ENGINEERS | SURVEYORS
141 9th Street - P.O. Box 774943
Steamboat, Colorado 80477
(970) 871-9349
www.LANDMARK-CO.com



DRAWING FILENAME: P:\112-550\Road\Production Drawings\112-550-CD-C-612 Erosion Details.dwg LAYOUT NAME: C.612 DATE: Feb 09, 2022 2:23pm CAD OPERATOR: eh
LIST OF REVISIONS: (see sheet C.612)



WILD BLUE GONDOLA

Temporary Erosion Control Details

SHEET

C.612

THESE DRAWINGS ARE PROVIDED FOR INFORMATION ONLY. LANDMARK CONSULTANTS, INC. AND ITS EMPLOYEES ARE NOT PROVIDING ANY GUARANTEE OR WARRANTY FOR THE ACCURACY OR COMPLETENESS OF THESE DRAWINGS. THE USER OF THESE DRAWINGS SHALL BE RESPONSIBLE FOR OBTAINING ALL NECESSARY PERMITS AND FOR OBTAINING ALL NECESSARY INFORMATION FROM THE APPROPRIATE AGENCIES. LANDMARK CONSULTANTS, INC. IS NOT RESPONSIBLE FOR ANY DAMAGE OR INJURY TO PERSONS OR PROPERTY ARISING FROM THE USE OF THESE DRAWINGS.

CIVIL ENGINEERS | SURVEYORS

141 9th Street - P.O. Box 774943
Steamboat, Colorado 80477
(970) 871-9494
www.LANDMARK-CO.com

