

DRAWING FILE NAME: P:\112-550\DWG\Proposed\Drawings\112-550-CC-0302-Notes.dwg LAYOUT NAME: C.004 DATE: Feb 03, 2022 2:28PM CAD OPERATOR: wjk
LIST OF REVISIONS: (4/25/2022) (JAC/MSR/CCS) (1/1/2024)

Emergency Response:

Fire plan- Steamboat has a fire plan (Appendix F) which outlines preventative measures and responses related to fire mitigation. Additionally, this plan outlines necessary measures for exemptions to Stage 2 fire restrictions for welding and using vehicles off-road. This operating plan and authorized officer approval of the plan equates to the requirement that an exemption must be applied for in writing, include an appropriate mitigation plan (see Appendix) and must be authorized in writing by the appropriate Forest Service official.

Notice regarding Exemptions: Holders of valid Forest Service permits, leases and authorizations and all other persons are on notice that when proceeding with activities that are authorized pursuant to these Exemptions, such persons are responsible for conducting authorized activities in a safe and prudent manner using extra precautions and are electing to proceed at their own risk. An exemption does not absolve an individual or organization from liability or responsibility for damage, injury or loss to the United States for any fire started while undertaking the exempted activity.

Fire, Health & Sanitation Plan- The Colorado Department of Health, Routt County Building Department, Environmental Health Department, Steamboat Springs Rural Fire Protection District, as well as SSRC's insurance companies (both property and worker's compensation carriers) actively inspect the facilities and operations owned by SSRC. SSRC maintains a separate file of all fire inspections in the Facilities Maintenance offices, health and sanitation inspections in the Food & Beverage offices and other safety reviews in office of the Risk Manager. These files are available for inspection by the Forest Service administering offices. As a function of Hahns Peak/Bear's Ears District's monitoring role of the Special Use Permittee, Forest Service representatives may from time to time participate in insurance and/or regulatory agency inspections and reviews.

Emergency Management Plan- SSRC maintains an up-to-date Emergency Management Plan with copies distributed to key directors and supervisors that might have involvement in a crisis situation.

Law Enforcement- The USFS is responsible for enforcing National Forest regulations as established in Title 36, Code of Federal Regulations.

- SSRC will cooperate with federal, state, and local law enforcement agencies in the performance of their respective duties, i.e., enforcement of Colorado Ski Safety Act of 1979, local ordinances, state laws, etc.
- The Routt County Sheriff has jurisdiction to enforce county and state law on the Steamboat Ski Area.
- The Colorado Division of Wildlife has jurisdiction to enforce state law on the Steamboat Ski Area.

7. Vegetation Management

Trees or shrubbery may be removed or destroyed only after the authorized officer or designated representative has approved in writing and marked or otherwise identified what may be removed or destroyed (Permit III G). See Appendix E for administrative use documentation. It is understood that tree removal could change the character of the forest and affect forest health where concentrated removal is proposed. Therefore, if concentrated removal is proposed through an operating plan or project record sheet, approval would be contingent upon consultation with the Forest Service and conformance with the ski area's vegetation management plan.

Trees that pose a safety concern to guests and infrastructure are authorized for removal.

Currently, SSRC cuts vegetation on groomed runs and mostly focused on those that receive snowmaking; this practice is authorized. Hollyhock, Rabbit Ears gilia, lady fern, broad-leaved twayblade, and white-veined wintergreen may not be damaged. Additionally, a 100-foot buffer around intermittent and perennial streams must be maintained unless authorized by the Forest Service botanist and/or hydrologist. The following ski runs have buffer exemptions: none (Permit III G).

Trees are authorized to be planted or transplanted following consultation with Forest Service botanist (Permit III G).

To the extent possible, management actions shall integrate SSRC's vegetation management plan recommendations when changing the vegetative component or when efficiencies can be made when working in a coincident area.

SSRC is responsible for nonnative and invasive species treatment. Treatments within the resort shall be reported on an annual basis and include: weed species, treatment locations (a map or GPS), acres treated, name of the herbicide(s) used and the quantity applied (total chemical used and application rate, if possible). Known invasive/noxious species on the resort include but are not limited to: These include whitetop or hoary cress, Canada thistle, bull thistle, yellow toadflax, houndstongue, and scentless chamomile, and reed canarygrass.

Herbicide and pesticide use required annual written approval (Permit V E). This operating plan authorizes the use of: Kernight (6oz/gallon), Curtail (2oz/gallon), 2-4-D (16oz 2-4-D, 4 grams Escort, splash of Activator 90 per 20 gallons).

The approved seed mix for the resort is:
40% mountain brome, 33% blue wildrye, 23% slender wheatgrass and 4% Poa ampla or canbyi.

CALL UTILITY NOTIFICATION CENTER OF COLORADO



Know what's below.
Call before you dig.

CALL 2 BUSINESS DAYS IN ADVANCE BEFORE YOU DIG, GRADE, OR EXCAVATE FOR THE MARKING OF UNDERGROUND MEMBER UTILITIES



REVIEWED
FOR
CODE
COMPLIANCE
04/25/2022

WILD BLUE GONDOLA

SSRC NOTES 2 OF 2

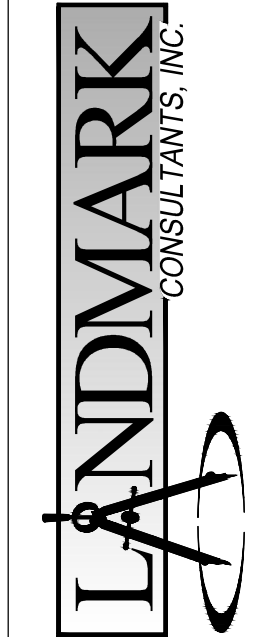
SHEET

C.004

THESE DRAWINGS ARE
PERMITS OR SERVICE
provided by Landmark
Consultants, Inc. and are not
to be used for any other
construction or contracting
unless signed and sealed by a
Professional Engineer in the
employ of Landmark
Consultants, Inc.

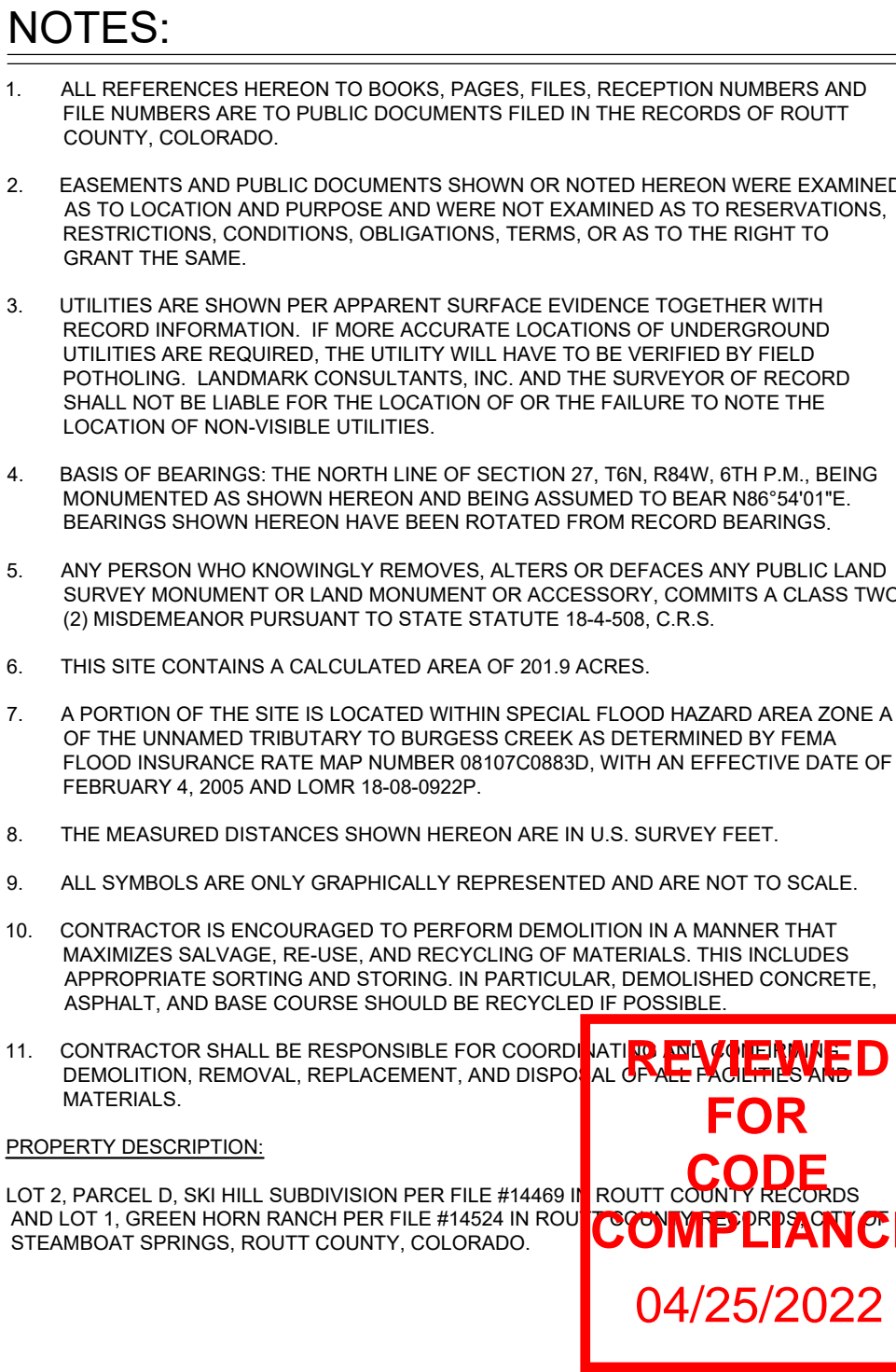
NO.	DATE	BY:	DESCRIPTION

PROJECT:	1012-550
DATE:	2/3/22
CONTACT:	Grip
EMAIL:	eng@landmark-co.com



CIVIL ENGINEERS | SURVEYORS

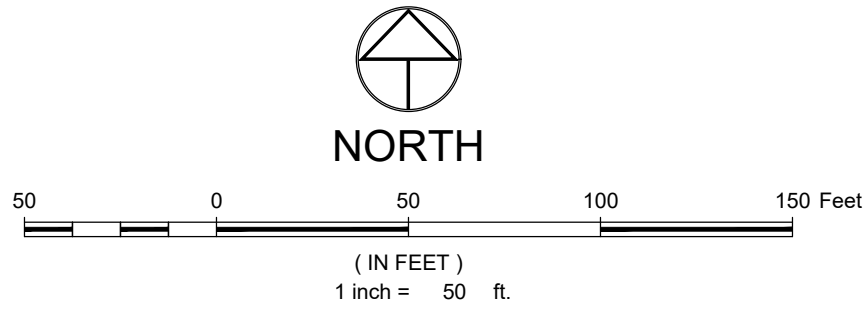
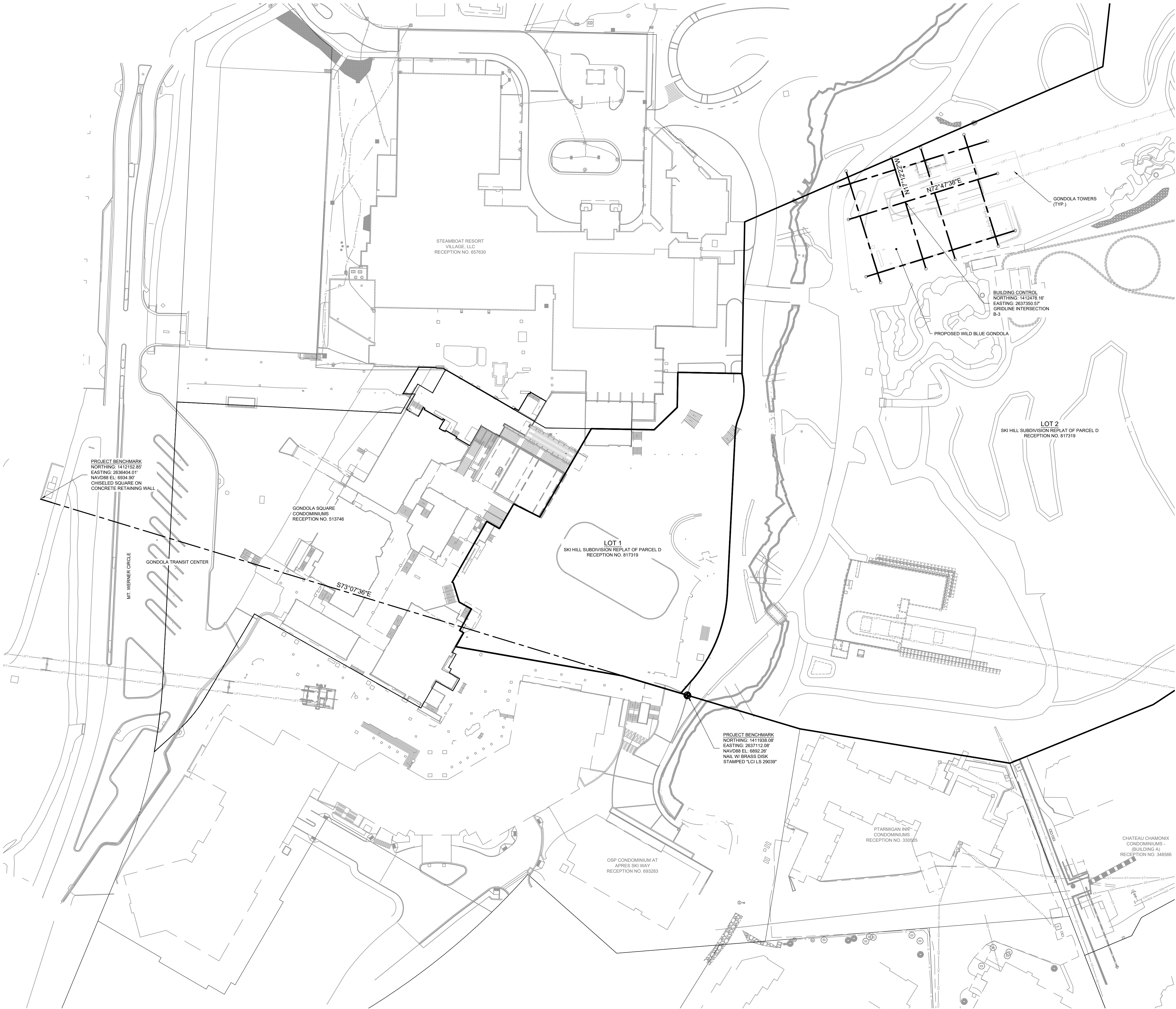
141 9th Street -- P.O. Box 774943
Steamboat, Colorado 80477
(970) 871-9349
www.LANDMARK-CO.com



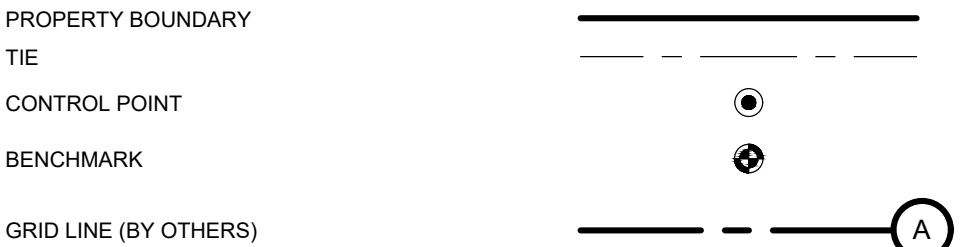
C.011

DRAWING FILENAME: P:\015-680\DWG\Production Drawings\CD\1012-050-CD-C-07-Existing Conditions - Elements.dwg LAYOUT NAME: C-015 DATE: Feb 03, 2022 - 2:09pm CAD OPERATOR: ENK
LIST OF XREFS: 1012-050-B-Rebar [1012-050-A-Hatch] 1012-050-E-Rein-Lines [EXIST_Lap-Elements] 1012-050-X-Support [1012-050-X-Support]

DRAWING FILENAME: P:\112-550\DWG\Proposed - Drawings\112-550-CD-000-Residential Control Plan.dwg LAYOUT NAME: C.090 DATE: Feb 03, 2022 1:50pm CAD OPERATOR: ahl
LIST OF REVISIONS: [REDACTED]



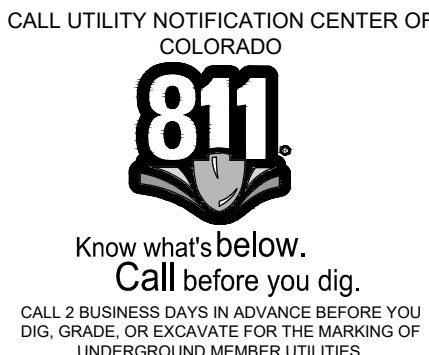
LEGEND:



NOTES:

- ALL REFERENCES HEREON TO BOOKS, PAGES, FILES, RECEPTION NUMBERS AND FILE NUMBERS ARE TO PUBLIC DOCUMENTS FILED IN THE RECORDS OF ROUTT COUNTY, COLORADO.
- COORDINATES AND BEARINGS SHOWN HEREON ARE COLORADO COORDINATE SYSTEM, NORTH ZONE 0501, US SURVEY FEET, NAD83(2011)
- BASIS OF BEARINGS: A GRID BEARING OF 73°07'36" BETWEEN THE PROJECT BENCHMARKS AS MONUMENTED AND SHOWN HEREON.
- THE POSITION AND ALIGNMENT OF THE GRIDLINES SHOWN HEREON **MUST** BE COORDINATED WITH THE LIFT MANUFACTURER IN THE FIELD PRIOR TO CONSTRUCTION.

REVIEWED
FOR
CODE
COMPLIANCE
04/25/2022



CIVIL ENGINEERS | SURVEYORS
141 9th Street -- P.O. Box 774943
Steamboat, Colorado 80477
(970) 871-9349
www.LANDMARK-co.com



THESE DRAWINGS ARE PREPARED BY OR PROVIDED BY LANDMARK CONSULTANTS, INC. AND ARE NOT TO BE USED FOR CONSTRUCTION OR CONTRACTING UNLESS SIGNED AND SEALED BY A LICENSED PROFESSIONAL ENGINEER OR SURVEYOR EMPLOYED BY LANDMARK CONSULTANTS, INC.

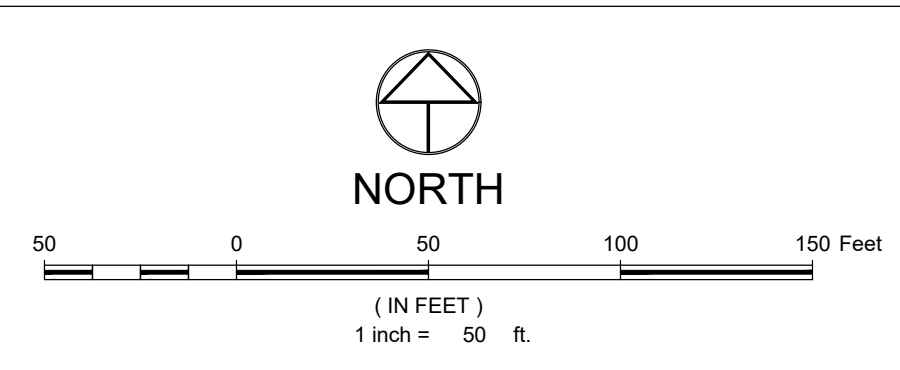
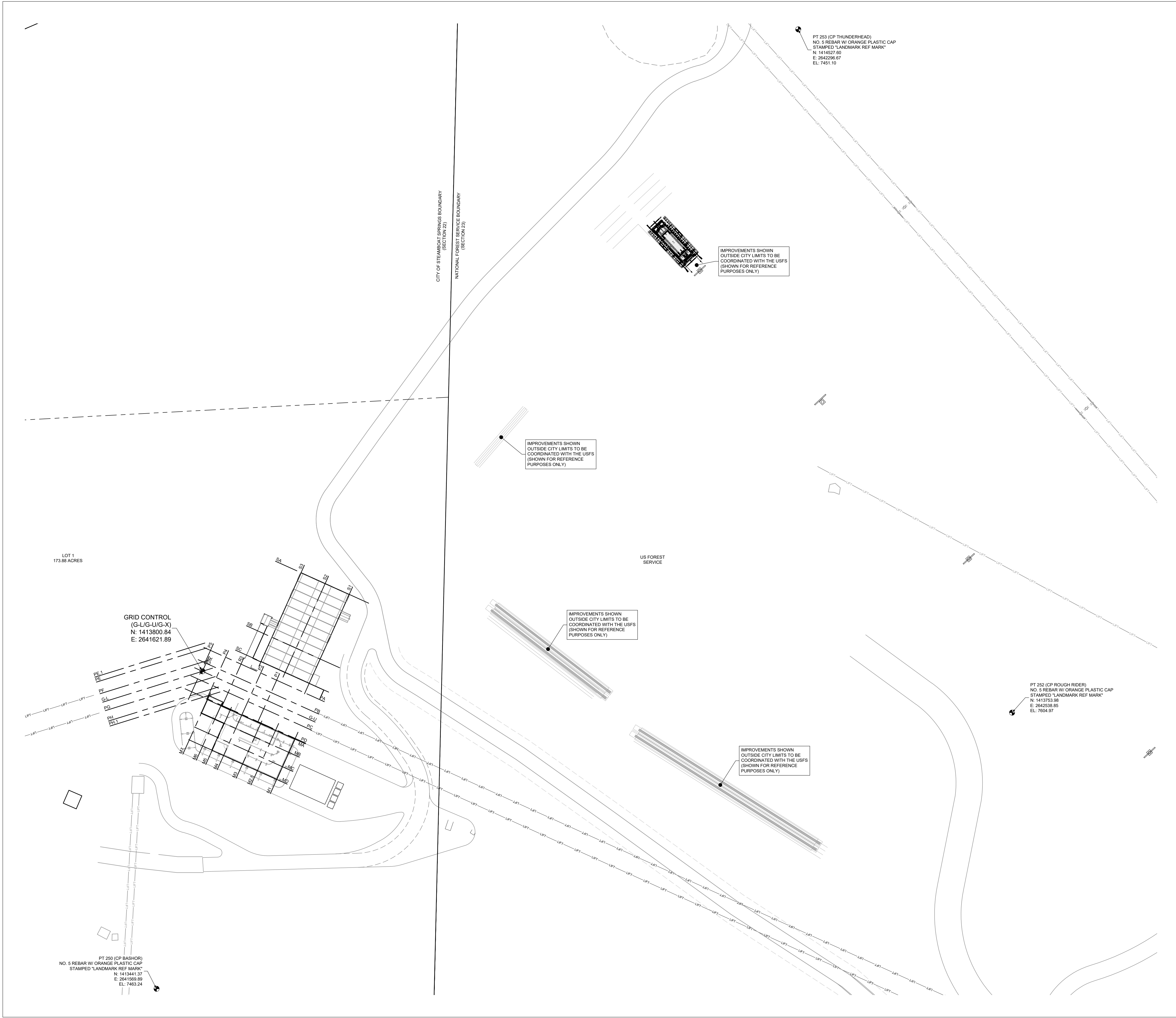
NO.	DATE	BY	DESCRIPTION
1	10/12/2020		
2	2022	Grp	

PROJECT:	1012-550
DATE:	2022
CONTACT:	Grp
EMAIL:	erikg@landmark-co.com

WILD BLUE GONDOLA
CONTROL PLAN - LOWER TERMINAL

SHEET
C.090

DRAWING FILENAME: P:\112-550\DWG\Proposed - Drawings\112-550-C01-000-Proposed Control Plan.dwg LAYOUT NAME: C091 DATE: Feb 03, 2022 2:10pm CAD OPERATOR: aia
L112-550.dwg [112-550.dwg] [112-550.dwg] [112-550.dwg] [112-550.dwg] [112-550.dwg] [112-550.dwg] [112-550.dwg] [112-550.dwg] [112-550.dwg] [112-550.dwg]



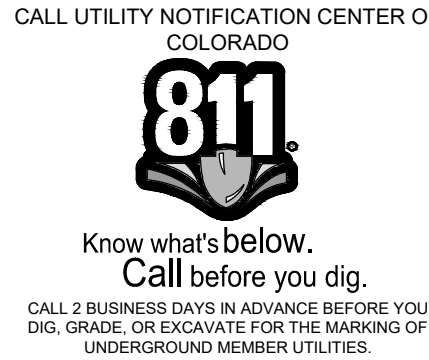
LEGEND:



NOTES:

- ALL REFERENCES HEREON TO BOOKS, PAGES, FILES, RECEPTION NUMBERS AND FILE NUMBERS ARE TO PUBLIC DOCUMENTS FILED IN THE RECORDS OF ROUTT COUNTY, COLORADO.
- COORDINATES AND BEARINGS SHOWN HEREON ARE COLORADO COORDINATE SYSTEM, NORTH ZONE 0501, US SURVEY FEET, NAD83(2011)
- BASIS OF BEARINGS: A GRID BEARING OF 73°07'36" BETWEEN THE PROJECT BENCHMARKS AS MONUMENTED AND SHOWN HEREON.
- THE POSITION AND ALIGNMENT OF THE GRIDLINES SHOWN HEREON **MUST** BE COORDINATED WITH THE LIFT MANUFACTURER IN THE FIELD PRIOR TO CONSTRUCTION.

REVIEWED
FOR
CODE
COMPLIANCE
04/25/2022



CIVIL ENGINEERS | SURVEYORS

141 9th Street -- P.O. Box 774943
Steamboat, Colorado 80477
(970) 871-9393
www.LANDMARK-co.com

LANDMARK
CONSULTANTS, INC.

THIS DRAWING AND ALL INFORMATION CONTAINED HEREIN IS THE PROPERTY OF LANDMARK CONSULTANTS, INC. AND IS NOT TO BE REPRODUCED OR TRANSMITTED IN ANY FORM OR BY ANY MEANS, ELECTRONIC OR MECHANICAL, INCLUDING PHOTOCOPYING, RECORDING, OR BY ANY INFORMATION STORAGE AND RETRIEVAL SYSTEM, WITHOUT THE WRITTEN PERMISSION OF LANDMARK CONSULTANTS, INC.

NO.	DATE	BY	DESCRIPTION
1012-550	2022	Grp	

PROJECT: 1012-550

DATE: 2022

CONTACT: Grp

EMAIL: enr@landmark-co.com

WILD BLUE GONDOLA

CONTROL PLAN - MID-STATION

SHEET

C.091