

XVERS[®]

CONDENSING FIRE-TUBE BOILER



VERSATIC[®] WITH
RAYMOTE[™]

MAXIMUM
EFFICIENCY

INSTALLATION
VERSATILITY

Raypak[®]
A Rheem[®] Company

ENGINEERED TO PERF

The latest in boiler design packed with cutting-edge advancement.

XVers is designed to be “Extremely Versatile.” Equipped with the VERSA IC integrated control system, XVers are capable of operating as a single boiler or cascade of boilers for a multitude of system types, including: primary loop hydronic, variable-flow primary loop hydronic, primary-secondary hydronic and variable-flow primary-secondary hydronic. Up to 8 heaters can be cascaded in parallel or sequential modulation modes. Combined with cascade interstage delay settings you will have precise control and optimization of your boiler system.



ORM. BUILT TO LAST.

VERSA IC intelligence with Raymote connectivity.

Raypak's VERSA IC combines modulating temperature control, safety limits, and ignition programming into one user-friendly integrated control platform. With self-learning features that prevent equipment damage, this automated controller is easy to set-up, understand, and use, making it as close to plug and play as possible.

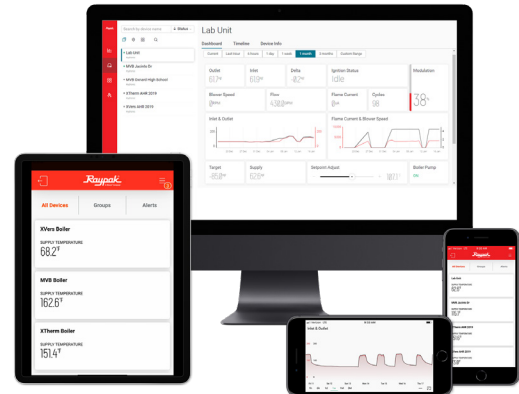
The VERSA IC system can be remotely monitored through the Raymote mobile app or web dashboard. With touch-of-a-button access to vital information, Raymote gives you:

- Real time service notifications to keep you informed.
- View and manage your Raypak systems at multiple sites.
- Instant visibility to historical data and performance reports.

1 year of Raymote service included.

Raymote retrofit kits available for installed products with the VERSA IC touchscreen.

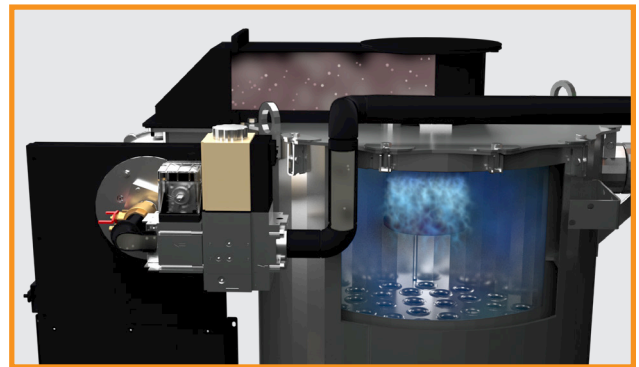
Raymote™



O₂ Trim System*

HO₂T continuously monitors the oxygen level of the flue gas in the vent piping. If the O₂ level deviates from the target set point (operating curve), HO₂T will modulate the fuel gas flow via the actuator and valve and bring the O₂ back to the target set point. Built-in, automatic system protection that extends the life of your equipment by maintaining the optimum fuel to air ratio.

*Optional package.



Indoor or Outdoor

Safety certified for indoor/outdoor installation. Every XVers is direct vent capable and comes standard with an outdoor intake air cover.

Weatherproof Jacket

Heavy-gauge galvanized steel with a UV-resistant powder coat finish is impervious to weather and corrosion.



Easy To Connect

Adaptable controls that support multiple piping, venting and operational configurations.

Small Footprint

For new buildings or retrofit into existing systems with ease. The practical base allows for easy transportation with a pallet jack or forklift.

Learn more at raypak.com



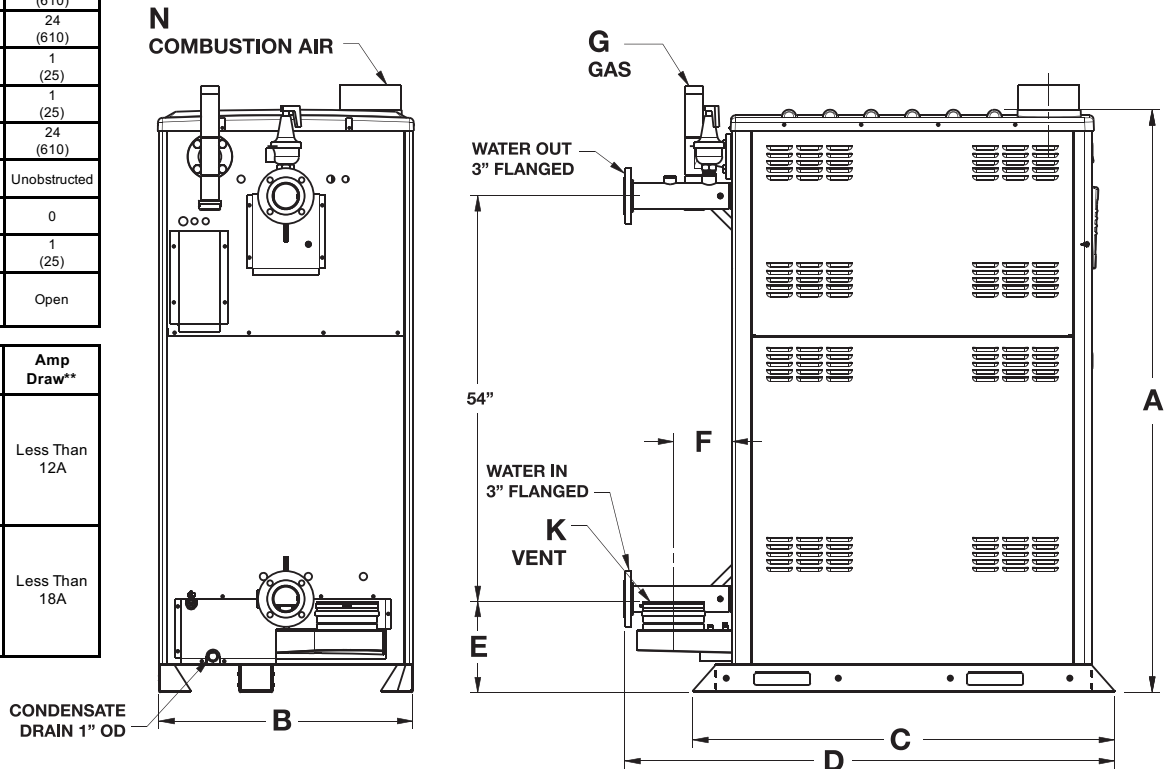
XVers - Type H Models 0856 - 3006

Model (H7-)	MBTUH (kw/h)		Turndown	AHRI Thermal Efficiency	Dimensions In. (mm)										Ship Weight Lbs. (kg)
	Input	Output			A Height	B Width	C Base Depth	D Overall Depth*	E	F	G	K Flue ø	N Comb. Air ø		
0856	855 (250.6)	822.5 (241.1)	8 to 1	96.2%	78 (1981)	30 (762)	51.3 (1303)	60.2 (1529)	12-1/8 (308)	12-1/2 (318)	1-1/4	6	6	1596 (724)	
1006	999 (292.8)	961 (281.6)	9 to 1	96.2%	78 (1981)	30 (762)	51.3 (1303)	60.2 (1529)			1-1/4	6	6	1596 (724)	
1256	1250 (366.3)	1202.5 (352.4)	13 to 1	96.2%	78 (1981)	30 (762)	54.4 (1382)	63.4 (1610)			1-1/4	8	6	1960 (889)	
1506	1500 (439.6)	1443 (422.9)	15 to 1	96.2%	78 (1981)	30 (762)	54.4 (1382)	63.4 (1610)			1-1/4	8	6	1960 (889)	
1756	1750 (512.9)	1683.5 (493.4)	8 to 1	96.2%	78 (1981)	34 (864)	56.5 (1435)	65.7 (1669)			2	8	8	2080 (943)	
2006	1999 (585.8)	1923 (563.6)	9 to 1	96.2%	78 (1981)	34 (864)	56.5 (1435)	65.7 (1669)			2	8	8	2080 (943)	
2506	2499 (732.4)	2404 (704.5)	9 to 1	96.2%	78 (1981)	34 (864)	60 (1524)	70.4 (1788)	13-1/8 (333)	13-1/2 (343)	2-1/2	10	8	2900 (1315)	
3006	3000 (879.2)	2868 (841)	10 to 1	95.5%	78 (1981)	34 (864)	60 (1524)	70.4 (1788)			2-1/2	10	8	2900 (1315)	

	Clearances in. (mm)	
	Combustible Minimum	Service Minimum
Front	Open	30 (762)
Rear (indoor)	24 (610)	24 (610)
Rear (outdoor)	12 (305)	24 (610)
Right	1 (25)	1 (25)
Left	1 (25)	1 (25)
Top (indoor)	0	24 (610)
Top (outdoor)	Unobstructed	Unobstructed
Floor	0	0
Vent (indoor)	1 (25)	1 (25)
Vent Termination (outdoor)	Open	Open

Standard Power Shown.
 ** Current draw is for boiler only
 Optional: 208V 3-PH, 230V 1-PH, 277V 3-PH or 480/600V/3PH
 Consult factory for current draw information.
 See submittal for additional dimensions.

Model	Power Supply	Amp Draw**
0856	120V/1PH	Less Than 12A
1006		
1256		
1506		
1756	208V1PH	Less Than 18A
2006		
2506		
3006		



www.raypak.com

2151 Eastman Avenue | Oxnard, CA 93030 | 805-278-5300

Litho in U.S.A. ©2020 Raypak, Inc. 1000.24F Effective 08-01-20 Replaces 05-01-19