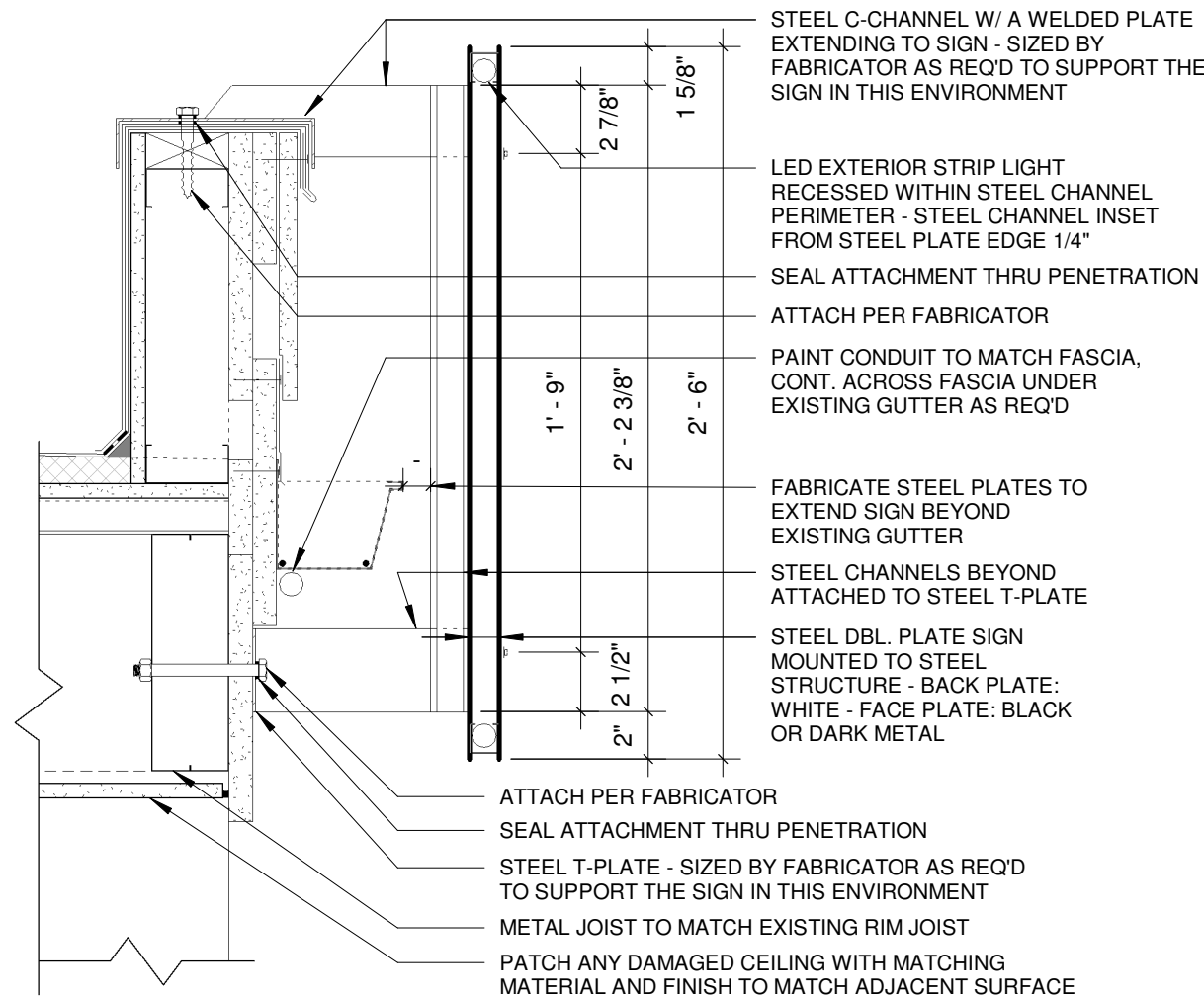


LIGHT SPECIFICATION: LED LINEAR VENUS TC-TV-IP67
STATIC WHITE LED STRIP (1.8 TO 4.6 WATTS/FT)

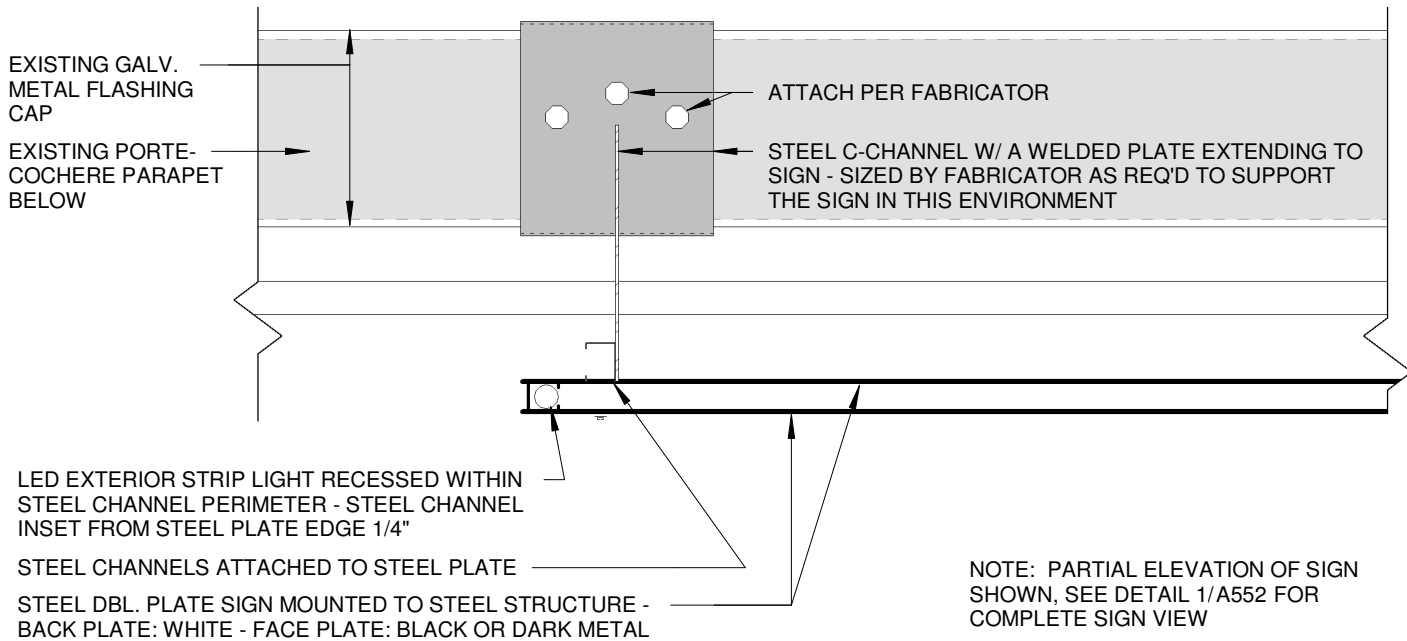
NOTE: ALL ELEMENTS NOT POINTED OUT OR
OTHERWISE SPECIFIED ARE EXISTING - FILED VERIFY



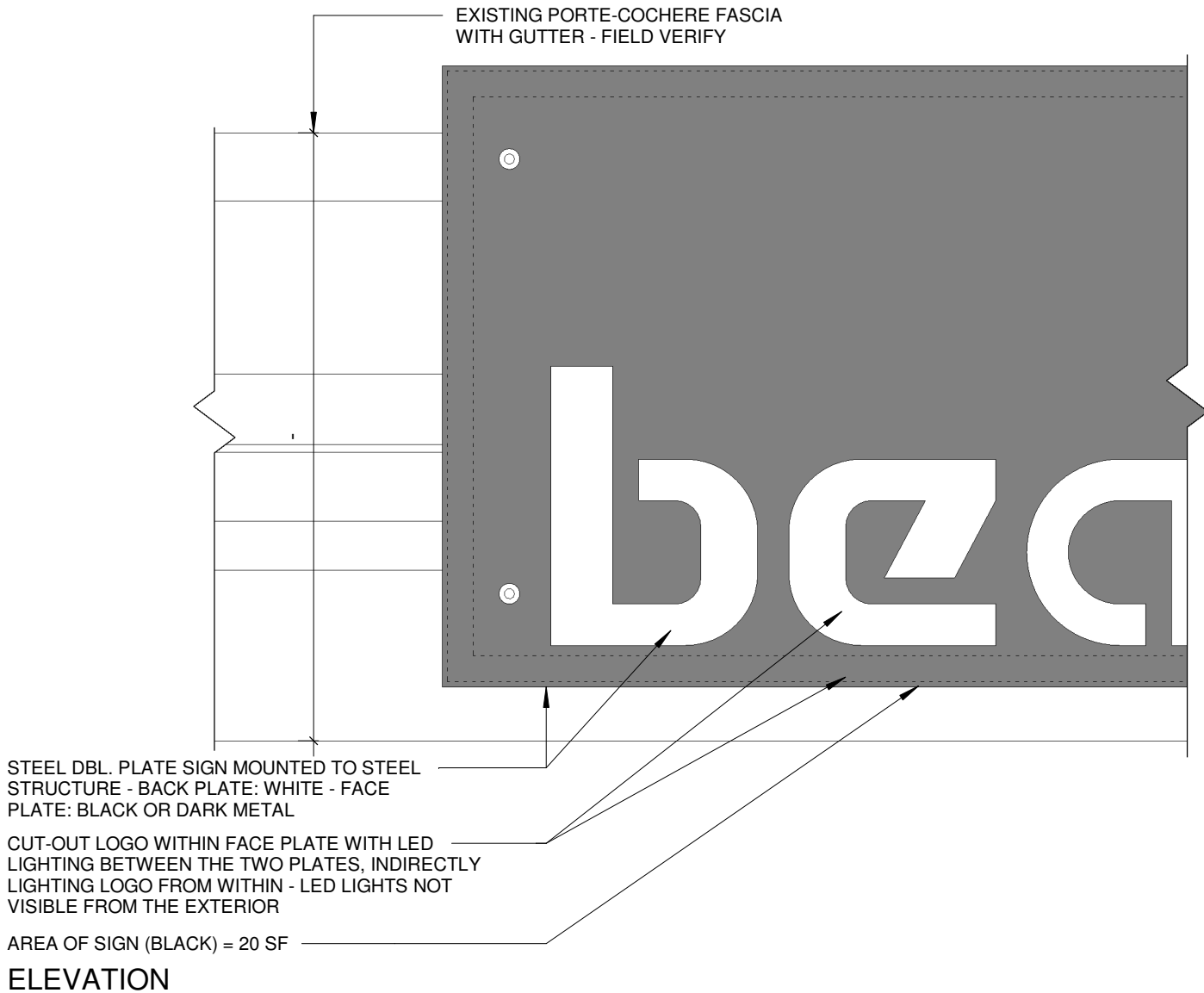
1
A553

PORTE-COCHERE EAVE SIGN DETAIL

1 1/2" = 1'-0"



PLAN



ELEVATION

DATE: 2021-08-03 - SIGN PERMIT

NOTICE: DUTY OF COOPERATION

Release of these plans contemplates further cooperation among the owner, his contractor and the architect. Design and construction are complex. Although the architect and his consultants have performed their services with due care and diligence, they cannot guarantee perfection. Communication is imperfect and every contingency cannot be anticipated. Any ambiguity or discrepancy discovered by the use of these plans shall be reported immediately to the architect. Failure to notify the architect compounds misunderstanding and increases responsibility for the consequences. Changes made from the plans without consent of the architect are unauthorized and shall relieve the architect of responsibility for all consequences arising out of such changes.

All design, documents and data prepared by Eric Smith Associates, P.C., as instruments of service shall remain property of Eric Smith Associates, P.C., and shall not be copied, changed or disclosed in any form whatsoever without first obtaining the express written consent of Eric Smith Associates, P.C.

Eric Smith Associates, P.C.

BEAR CLAW II
EXTERIOR REMODEL
2420 SKI TRAIL LANE
STEAMBOAT SPRINGS, COLORADO

ES

ERIC SMITH ASSOCIATES, P.C.
1915 SEVENTH STREET
BOULDER, COLORADO, 80502
(303) 442-9486, (303) 442-4748 FAX

Job Number: 17022
Date: 11.2.2020
Drawn By: Author
Checked By: Checker

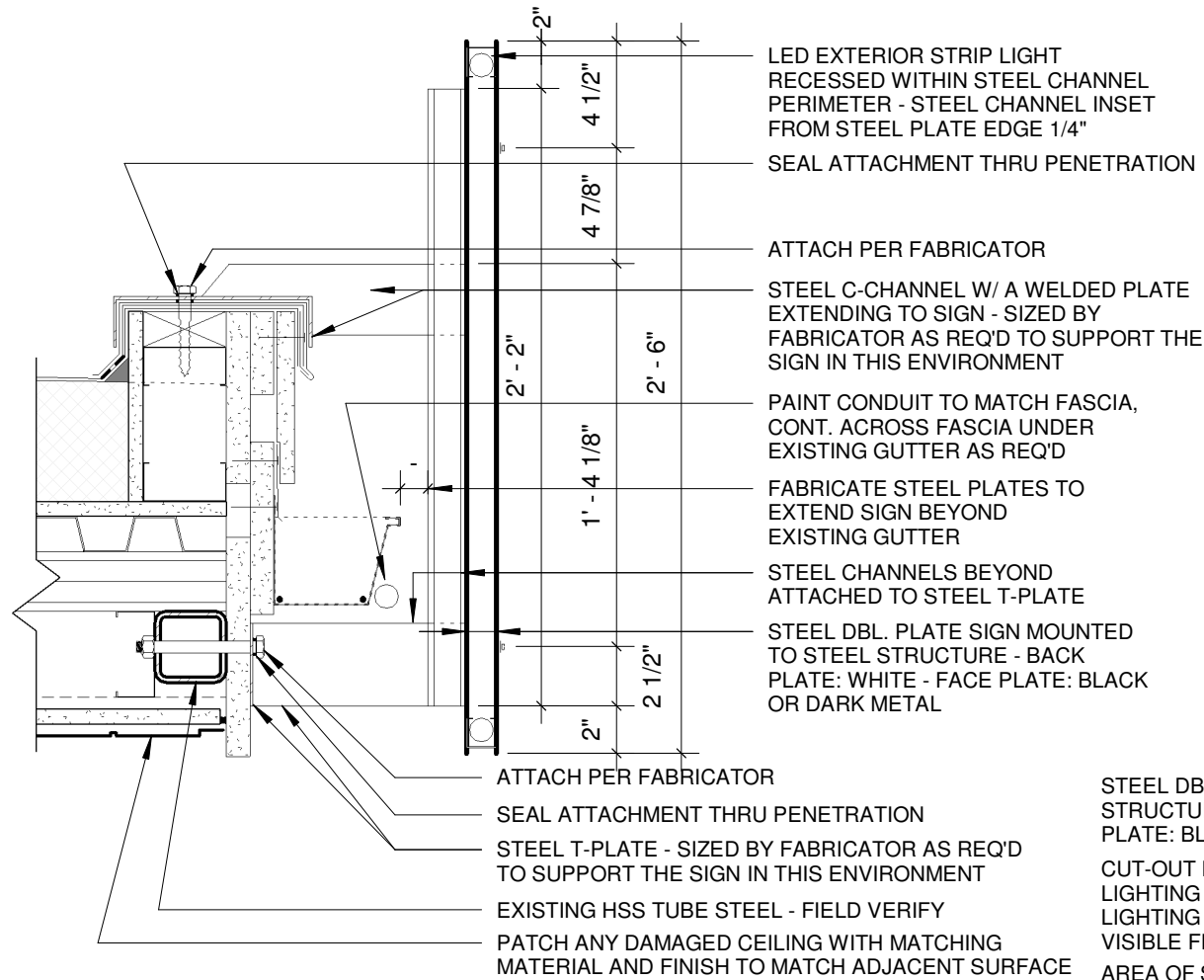
Project Phase
PERMIT

Sheet Title
DETAILS, SIGN
PERMIT

Sheet Number
A553

LIGHT SPECIFICATION: LED LINEAR VENUS TC-TV-IP67
STATIC WHITE LED STRIP (1.8 TO 4.6 WATTS/FT)

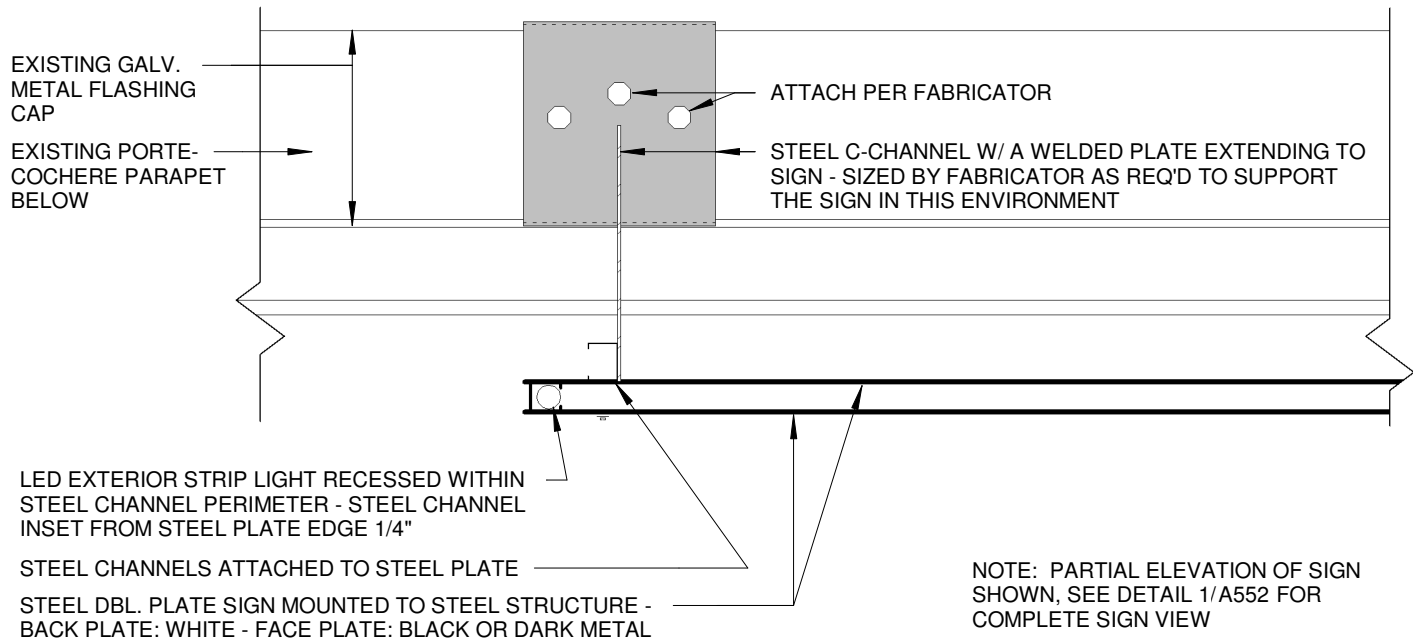
NOTE: ALL ELEMENTS NOT POINTED OUT OR
OTHERWISE SPECIFIED ARE EXISTING - FILED VERIFY



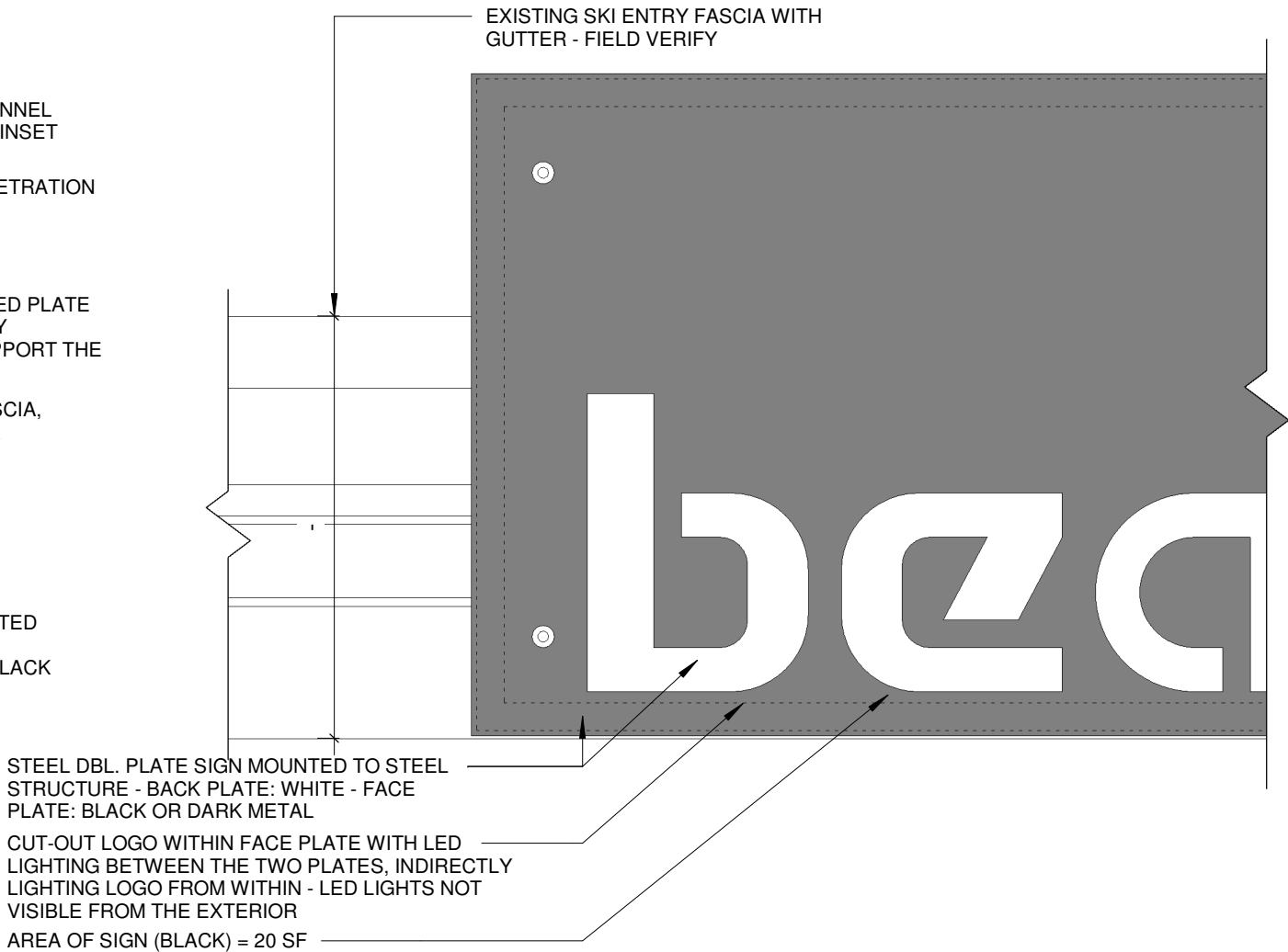
1
A554

SKI ENTRY EAVE SIGN DETAIL

1 1/2" = 1'-0"



PLAN



ELEVATION

DATE: 2021-08-03 - SIGN PERMIT

NOTICE: DUTY OF COOPERATION

Release of these plans contemplates further cooperation among the owner, his contractor and the architect. Design and construction are complex. Although the architect and his consultants have performed their services with due care and diligence, they cannot guarantee perfection. Communication is imperfect and every contingency cannot be anticipated. Any ambiguity or discrepancy discovered by the use of these plans shall be reported immediately to the architect. Failure to notify the architect compounds misunderstanding and increases responsibility for the consequences. Changes made from the plans without consent of the architect are unauthorized and shall relieve the architect of responsibility for all consequences arising out of such changes.

All design, documents and data prepared by Eric Smith Associates, P.C., as instruments of service shall remain property of Eric Smith Associates, P.C., and shall not be copied, changed or disclosed in any form whatsoever without first obtaining the express written consent of Eric Smith Associates, P.C.

Eric Smith Associates, P.C.

BEAR CLAW II
EXTERIOR REMODEL
2420 SKI TRAIL LANE
STEAMBOAT SPRINGS, COLORADO



Job Number: 17022
Date: 11.2.2020
Drawn By: Author
Checked By: Checker

Project Phase
PERMIT

Sheet Title
DETAILS, SIGN
PERMIT

Sheet Number
A554