



Saunders Construction, LLC
86 Inverness Place North
Englewood CO 80112 USA

Request For Information RFI-097

Printed On: 10/01/2021
Page 1 of 2

Subject: BP3 Art and Brand Wall Supplemental Steel
Project: Steamboat - BV BP Promenade and Goldwalk
Address: 2305 Mount Werner Circle
Steamboat Springs CO 80487 USA
Phone:
To: Bryan Sculthorpe
Saunders Construction, LLC
From: Saunders Construction, LLC

Date: 09/28/2021
Job: 2001502104
Required: 10/05/2021
Est. Cost Impact : \$
Est. Days Impact:
Fax:
Alec Hallman

Co-Author:

Contact:

Co-Author RFI Number:

Reference:

Specification Section:
Posted to Asbuilts:

Drawing:
Discipline:

Request

Ref attached correspondence and bootleg drawings sheets, the supplemental steel for the Goldwalk and Artwall is required to be included in BP3 Goldwalk scope.

Suggestion (Saunders Construction, LLC assumes no associated design liability)

Please confirm bootleg supplemental steel package should be included in scope. If so- please provide updated construction documents that are reflective of additional supplemental steel required.

Saunders Construction, Inc. assumes no associated design liability and that the Design Team needs to furnish design directives in response to this RFI that materially changes the original intent of the Contract Documents.

Answer ☐ **Accept Suggestion**

DW HAS UPDATED OUR BP3 GOLDWALK DRAWINGS TO REFLECT THE REQUIERED SUPPLEMENTAL STEEL TO SUPPORT THE ART AND BRAND WALLS. ADDITIONALLY, WE HAVE UPDATED THE LIGHTING SCHEDULE AND LIGHTING PLAN TO INCLUDE THE F6 FIXTURES. REVISED DRAWINGS INCLUDE: L0-04 GENERAL INFORMATION, L3-01 MATERIALS PLAN, L4-01, L6-01 LIGHTING PLAN, L7-02 ART WALL DETAILS, L7-03 BRAND WALL DETAILS.
SCARROLLA, DW, 10/01/21

IN ADDITION TO THE STEEL QUESTION ABOVE, CIRCUITING AND CONTROL INFORMATION HAS BEEN PROVIDED IN THE ATTACHED DRAWING UPDATE FOR ADDED LIGHTING WITHIN THE ART WALL AND BRAND WALL. REFER TO ADDITIONAL CORRESPONDENCE (PAGES 7-21 HEREIN) FOR FIELD COORDINATION AND INSTALLATION CLARIFICATIONS. EXACT DMX CONTROL SYSTEM SHALL BE CONFIRMED BASED ON THE LIMITATIONS OF THE BASIS OF DESIGN DMX CONTROLLER AND THE OWNER DESIRED DYNAMIC SCENE EFFECTS THAT ARE TO OCCUR AT THESE WALLS. FURTHER CONFIRMATION FROM OWNER AND LIGHTING CONTROLS PROGRAMMER REQUIRED PRIOR TO FINAL DMX SYSTEM SELECTION.
ACJ/ME 10.01.2021

Answered By: Saunders Construction, LLC

Signed: _____
Alec Hallman

Date: 09/29/2021

Please find the attached RFI response. If this response should have any cost/schedule impact please reply within four (4) business days or this will be considered a no-cost/schedule issue.

Distribution:

<u>Contact</u>	<u>Company</u>	<u>Contact</u>	<u>Company</u>
Ben Campbell	Central Electric, LLC.	Jed Gibson	Central Electric, LLC.
Gregg Riker	Rikon Management, LLC	Reno Romagnoli	Saunders Construction, LLC



Saunders Construction, LLC
86 Inverness Place North
Englewood CO 80112 USA

Request For Information

RFI-097

Printed On: 09/28/2021
Page 1 of 2

Subject: BP3 Art and Brand Wall Supplemental Steel
Project: Steamboat - BV BP Promenade and Goldwalk
Address: 2305 Mount Werner Circle
Steamboat Springs CO 80487 USA
Phone:
To: Stephen Carrola
Design Workshop Inc
From: Saunders Construction, LLC

Date: 09/28/2021
Job: 2001502104
Required: 10/05/2021
Est. Cost Impact : \$
Est. Days Impact:
Fax:
Alec Hallman

Co-Author:

Contact:

Co-Author RFI Number:

Reference:

Specification Section:
Posted to Asbuilts:

Drawing:
Discipline:

Request

Ref attached correspondence and bootleg drawings sheets, the supplemental steel for the Goldwalk and Artwall is required to be included in BP3 Goldwalk scope.

Suggestion (Saunders Construction, LLC assumes no associated design liability)

Please confirm bootleg supplemental steel package should be included in scope. If so- please provide updated construction documents that are reflective of additional supplemental steel required.

Saunders Construction, Inc. assumes no associated design liability and that the Design Team needs to furnish design directives in response to this RFI that materially changes the original intent of the Contract Documents.

Answer ☐ **Accept Suggestion**

DW HAS UPDATED OUR BP3 GOLDWALK DRAWINGS TO REFLECT THE REQUIRED SUPPLEMENTAL STEEL TO SUPPORT THE ART AND BRAND WALLS. ADDITIONALLY, WE HAVE UPDATED THE LIGHTING SCHEDULE AND LIGHTING PLAN TO INCLUDE THE F6 FIXTURES. REVISED DRAWINGS INCLUDE: L0-04 GENERAL INFORMATION, L3-01 MATERIALS PLAN, L4-01, L6-01 LIGHTING PLAN, L7-02 ART WALL DETAILS, L7-03 BRAND WALL DETAILS. SCARROLLA, DW, 10/01/21

IN ADDITION TO THE STEEL QUESTION ABOVE, CIRCUITING AND CONTROL INFORMATION HAS BEEN PROVIDED IN THE ATTACHED DRAWING UPDATE FOR ADDED LIGHTING WITHIN THE ART WALL AND BRAND WALL. REFER TO ADDITIONAL CORRESPONDENCE (PAGES 7-21 HEREIN) FOR FIELD COORDINATION AND INSTALLATION CLARIFICATIONS.

EXACT DMX CONTROL SYSTEM SHALL BE CONFIRMED BASED ON THE LIMITATIONS OF THE BASIS OF DESIGN DMX CONTROLLER AND THE OWNER DESIRED DYNAMIC SCENE EFFECTS THAT ARE TO OCCUR AT THESE WALLS. FURTHER CONFIRMATION FROM OWNER AND LIGHTING CONTROLS PROGRAMMER REQUIRED PRIOR TO FINAL DMX SYSTEM SELECTION.

ACJ/ME
10.01.2021

Answered By: SCARROLLA, DW
10/1/21

Date:

Signed:

Distribution:

Contact

Becky Zimmerman
Jacob Apple

Company

Design Workshop Inc
M. Arthur Gensler, Jr. and A

Contact

Geoffrey Brooksher
Juan Padilla

Company

M. Arthur Gensler, Jr. and A
M. Arthur Gensler, Jr. and A

Contact	Company	Contact	Company
Gregg Riker	Rikon Management, LLC	Bryan Sculthorpe	Saunders Construction, LLC

GENERAL NOTES

1. Landmark prepared the survey for this project. It has been reformatted for use in and for preparation of these documents. Contractor shall obtain officially signed copy from Landmark and become familiar with it, the existing conditions and site context prior to construction. All discrepancies should be brought to the attention of the Landscape Architect for immediate resolution. Landscape Architect is not responsible for errors or omissions associated with preparation or documentation of survey.
2. North West Colorado Consultants, Inc. prepared the geotechnical investigation and report for this project. It has been referenced during preparation of these documents. Contractor shall obtain officially signed copy from North West Colorado Consultants, Inc. and become familiar with it prior to construction. All discrepancies should be brought to the attention of the landscape architect for immediate resolution. Landscape Architect is not responsible for errors or omissions associated with preparation or documentation of report.
3. Contractor is responsible for determining means and methods for construction. These drawings may indicate a limit of proposed improvements, limits of site demolition, etc. for delineation of expected extents of disturbance, however, final impact shall be determined in the field. Should limits of disturbance exceed boundaries defined in drawings, Contractor shall contact Landscape Architect for resolution.
4. Contractor is responsible for repairing all work disturbed by construction outside of limit lines defined on drawings or through husher means and methods and General Conditions to a condition acceptable to the owner at no additional cost.
5. Contractor is responsible for protecting all existing conditions, improvements, utilities, etc. to remain. Any damages shall be repaired to a condition acceptable to the owner at no additional cost.
6. Contractor is responsible for maintaining a complete up-to-date set of Drawings and Specifications at the construction site and ensuring the documents are readily available for review by the Landscape Architect and governing agency.
7. The Drawings and Specifications are complementary to one another and implied to correspond withone another. Any discrepancies should be brought to the attention of the Landscape Architect for immediate resolution.
8. Contact the local underground utility service locator for utility locations and identification prior to commencing work and maintain in field throughout construction unless indicated or directed otherwise.
9. Verify plant protection, stormwater pollution protection plan (SWPPP), existing improvement to remain, and Contractor site control measures are in place prior to commencing with construction. Do not proceed with construction if not in compliance and maintained throughout. Coordinate with Owner's Representative and authorities having jurisdiction as required.
10. Synthetic turf is seasonal and specification information is included for reference.

SITE LAYOUT NOTES

1. Layout and dimensions provided on Drawings are based on combination of Northing and Easting Coordinate System and Traditional Dimensioning System.
2. Verify utility locates, plant protection and stormwater pollution protection plan (SWPPP) measures are in place prior to commencing construction. Do not proceed with construction if not in compliance and maintained throughout.
3. Layout and verify dimensions prior to construction. Field stake all proposed improvements for review and approval by Landscape Architect unless indicated otherwise. Bring discrepancies to the attention of the Landscape Architect for final direction. Landscape Architect reserves right to make field adjustments and layout decisions in field as necessary at no additional cost to owner.
4. Request inspection of field staking by Landscape Architect a minimum of 24 hours in advance of performing any work unless indicated otherwise.
5. For dimensions of buildings, garages, trash enclosures, patios and related work, refer to the architectural drawings. Copies of these drawings are available from the owner.
6. Written dimensions take precedence over scale. Bring discrepancies to the attention of the Landscape Architect for final direction.
7. This drawing includes the dimensional controls for lighting fixtures, area drains, (list additional line items).
8. Where dimensions are called as "equal," space referenced items equally, measured to their center lines.
9. Measurements are to face of building, wall or the fixed site improvement. Dimensions to center lines is indicated.
10. Provide expansion joints where concrete flatwork meets vertical structures such as walls, curbs, steps and building elements.

SITE LIGHTING NOTES

1. This Lighting package consists of Lighting Layouts, Details, Fixture Schedule, Fixture Cuts and Written Specifications - acquire all elements of this submittal to have a complete understanding of the Project's Lighting. Only the specified fixtures, lamps and auxiliary equipment required to properly install these fixtures shall be used.
2. The intention of the lighting package is to provide a job complete in every respect; the Contractor shall be responsible for this result.
3. The Contractor is responsible for the completed project meeting all local, state and federal codes and requirements pertaining to the work, as well as all applicable standards of practice.
4. Contractor to advise the Designer of conditions in the field that conflict with manufacturer's mounting instructions, design intent, codes, or standards of practice and await clarification prior to proceeding with installation.
5. Lighting symbols on plans are diagrammatic. Refer to details and specifications for actual dimensions and product information.
6. Contractor shall ensure luminaires are installed in accordance with Manufacturer's specifications and such that adjustable fixtures have been aimed and glare reducing accessories have been affixed to eliminate offsite glare.
7. Layout dimensions are for general reference only. Final location to be determined in the field by the Landscape Architect.
8. Lighting pull-boxes, vaults and other in-grade appurtenances shall be flush with adjacent finish grades or surfaces unless otherwise indicated. Notify Landscape Architect if located on a slope greater than 5% for direction.
9. Contractor shall have ultimate responsibility for matching transformer and driver size and specification to the Project's control and dimming system as specified by the Electrical Engineer. When such appurtenances are remote to the fixture, they shall be placed in approved locations that are accessible and as close to the fixture as possible. Every effort shall be made by the Contractor to properly camouflage remote boxes for these devices via location and finish color. Contractor shall allow no more than a 5% voltage drop to any fixture by calculating on a case by case basis the required sizing of wire determined by length of run and amperage required.
10. Coordinate with existing and proposed underground utilities. Notify Landscape Architect and Electrical Engineer of any conflicts for direction on fixture placement.
11. Final location and specification of building attached light fixtures (F3) will be shown on the Electrical Engineer's drawing set.
12. All exposed power sources, conduit, and wiring to be effectively camouflaged using paint, location, and visual screening per Landscape Architect's instruction (TYP).

TABLE OF ABBREVIATIONS

AFF	ABOVE FINISHED FLOOR	MEMB	MEMBRANE
APPROX	APPROXIMATE	MH	MANHOLE
ARCH	ARCHITECT	MIN	MINIMUM
AVG	AVERAGE	MISC	MISCELLANEOUS
B&B	BALLED AND BURLAPPED	MTD	MOUNTED
BC	BOTTOM OF CURB	MTL	METAL
BF	BOTTOM OF FOOTING	N	NORTH
BLDG	BUILDING	NIC	NOT IN CONTRACT
BM	BENCHMARK	NO	NUMBER
BOC	BACK OF CURB	NOM	NOMINAL
BR	BOTTOM OF RAMP	NOT TO SCALE	NOT TO SCALE
BRG	BEARING	OC	ON CENTER
BS	BOTTOM OF STEP	OD	OUTSIDE DIAMETER
BW	BOTTOM OF WALL	OPP	OPPOSITE
CAL	CALIPER	PAR	PARALLEL
CAP	CAPACITY	PC	POINT OF CURVATURE
CF	CUBIC FEET	PE	POLYURETHANE
CHAM	CHAMFER	PERF	PERFORATED
CIP	CAST IN PLACE	PED	PEDESTRIAN
CJ	CONTROL JOINT	PI	POINT OF INTERSECTION
CL	CENTER LINE	PL	PROPERTY LINE
CLR	CLEARANCE	PT	POINT, POINT OF TANGENCY
CM	CENTIMETER	PVC	POLYVINYL CHLORIDE
CO	CLEAN OUT	PVMT	PAVEMENT
COMP	COMPACTED	PVR	PAVER
CONC	CONCRETE	QTY	QUANTITY
CONST	CONSTRUCTION	R	RADIUS
CONT	CONTINUOUS	RECEP	RECEPTACLE
CONTR	CONTRACTOR	REF	REFERENCE
CU	CUBIC	REINF	REINFORCE(D)
CY	CUBIC YARD	REM	REMOVE
DBL	DOUBLE	REQD	REQUIRED
DF	DIRECTION OF FLOW	REV	REVISION, REVISED
DEG	DEGREE	ROW	RIGHT OF WAY
DEMO	DEMOLISH, DEMOLITION	RT	RIGHT
DIA	DIAMETER	S	SOUTH
DIM	DIMENSION	SAN	SANITARY
DETAL	DETAIL	SCH	SCHEDULE
DWG	DRAWING	SD	STORM DRAIN
E	EAST	SEC	SECTION
EA	EACH	SF	SQUARE FOOT (FEET)
EJ	EXPANSION JOINT	SHT	SHEET
EL	ELEVATION	SI	STORM INLET
ELEC	ELECTRICAL	SIM	SIMILAR
ENG	ENGINEER	SNT	SEALANT
EQ	EQUAL	SPECS	SPECIFICATIONS
EQUIP	EQUIPMENT	SQ	SQUARE
EST	ESTIMATE	ST	STORM SEWER
E.W.	EACH WAY	SY	SQUARE YARD
EXIST	EXISTING	STA	STATION
EXP	EXPANSION, EXPOSED	STD	STANDARD
FF	FINISHED FLOOR ELEVATION	STL	STEEL
FG	FINISHED GRADE	STRL	STRUCTURAL
FIN	FINISH	SYM	SYMMETRICAL
FL	FLOW LINE	T&B	TOP AND BOTTOM
FOC	FACE OF CURB	TBC	TOP OF BACK CURB
FT	FOOT (FEET)	TC	TOP OF CURB
FTG	FOOTING	TF	TOP OF FOOTING
GA	GAUGE	THCK	THICK
GAL	GALVANIZED	TOC	TOP OF CONCRETE
GC	GENERAL CONTRACTOR(OR)	TOPO	TOPOGRAPHY
GEN	GENERAL	TSL	TOP OF SLAB
HORIZ	HORIZONTAL	TRAS	TRANSFORMER
HP	HIGH POINT	TR	TOP OF RAMP
HT	HEIGHT	TS	TOP OF STEP
ID	INSIDE DIAMETER	TW	TOP OF WALL
INV	INVERT ELEVATION	TYP	TYPICAL
IN	INCH(ES)	VAR	VARIES
INCL	INCLUDE(D)	VERT	VERTICAL
INL	INLET	VEH	VEHICLE
IRR	IRRIGATION	VOL	VOLUME
JT	JOINT	WI	WITH
LIN	LINEAR	W/O	WITHOUT
LF	LINEAR FEET	WT	WEIGHT
LP	LOW POINT	WL	WEIR LEVEL
LT	LIGHT	WWF	WEALED WIRE FABRIC
MATL	MATERIAL	YD	YARD
MAX	MAXIMUM	@	AT

LINE TYPE LEGEND

PROPOSED		EXISTING
	Property Line	
	Easement Line	
	Setback Line	
	Limit of Work	
	Erosion Control Fence	
	Curb and Gutter	
	Sleeves	
	Building Wall	
	Roof Overhang	
	Edge of Below Grade Structure	
	Major Contour	
	Minor Contour	
	Buried Electric Line	
	Overhead Power Line	
	Cable TV Line	
	Fiber Optic Line	
	Gas Line	
	Sanitary Sewer Line	
	Storm Drain Line	
	Water Line	
	Edge of Pavement	

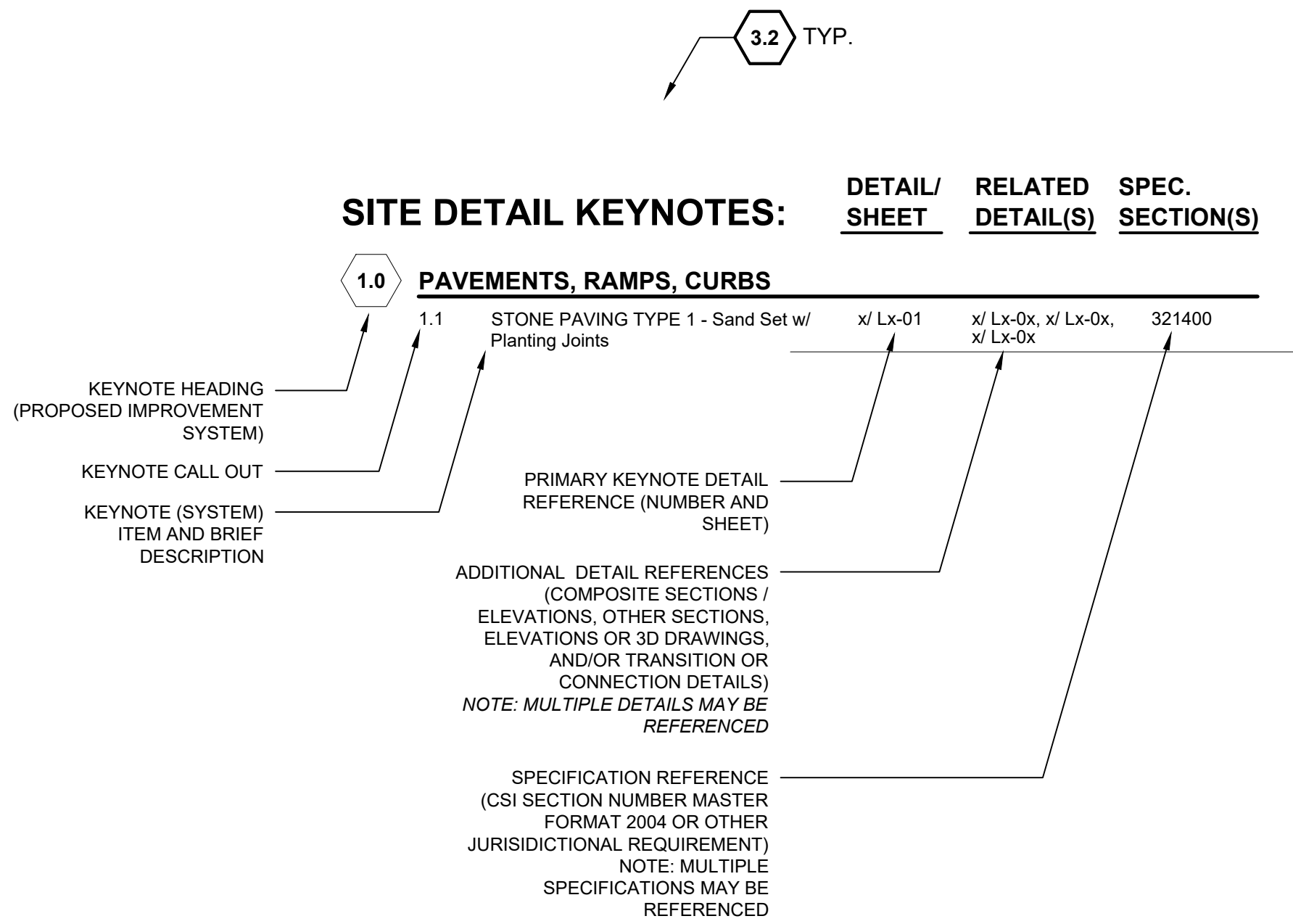
SYMBOL LEGEND

	Catenary down light (F4)		Catch basin
	Catenary attached holiday lights (F9)		Cleanout
	Round bollard (F10)		FFE/ Benchmark
	Electrical outlet		Manhole
	Transformer		Spot grade
	Table/Chair Type 1		Trench drain
	Table/Chair Type 2		
	Trash Receptacle		

MATERIALS LEGEND

	UNIT PAVING TYPE 4
--	--------------------

SAMPLE KEYNOTE DRAWING CALLOUT:



THE FOLLOWING LIST OF KEYNOTE HEADINGS (PROPOSED IMPROVEMENT SYSTEMS) HAVE BEEN INCORPORATED WITHIN THIS DRAWING SET:

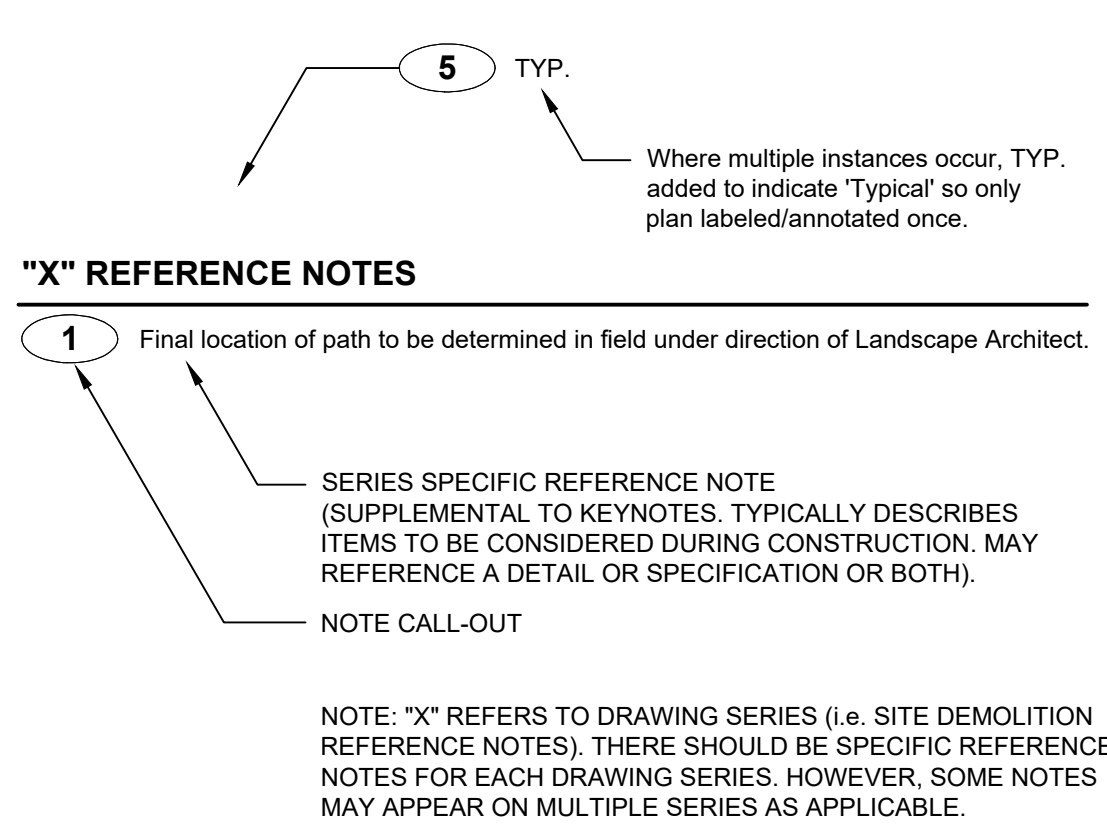
- 1.0 PAVEMENT, RAMPS, AND CURBS
 - 2.0 JOINTING
 - 3.0 STEPS
 - 4.0 SITE WALLS/EMBANKMENTS
 - 5.0 SITE FURNITURE
 - 6.0 RAILINGS, BARRIERS, AND FENCING
 - 7.0 SITE LIGHTING
 - 8.0 DRAINAGE
 - 9.0 PLANTING AND LANDSCAPE
 - 10.0 MISCELLANEOUS ELEMENTS
 - 11.0 SIGNAGE
- NOTE: IF A KEYNOTE HEADING IS NOT INCORPORATED IN PROJECT, A "NOT USED AT THIS TIME" REFERENCE HAS BEEN PROVIDED.

LIGHT FIXTURE SCHEDULE

- Fixture catalog numbers do not necessarily denote specific mounting accessories. Electrical Contractor shall be responsible for acquiring all accessories to successfully complete the installation.
- All directives are to the Contractor unless a responsible party is otherwise indicated.
- Confirm that all fixtures are compatible with the construction into which they are installed prior to placing fixture order.
- Provide lighting fixtures complete with all necessary components, as required for each type of mounting. Fixture catalog numbers do not necessarily denote specific mounting accessories. Acquire all necessary accessories to successfully complete installation in a code compliant manner and according to manufacturer's instructions.
- See Electrical Engineering drawings for all voltage and emergency backup requirements.
- Verify all finishes with Landscape Architect, prior to placing fixture order.
- Electrical Engineer is designing and specifying the project's controls system. Contractor to review power supplies for each fixture with the Electrical Engineer and only order dimming drivers and other power supply equipment compatible with the specified control system.

FIXTURE QUANTITIES SHOWN ON THIS SCHEDULE ARE FOR INFORMATION ONLY. THE CONTRACTOR IS RESPONSIBLE FOR PROVIDING A FIXTURE (AS SPECIFIED) AT EACH LOCATION SHOWN ON THE CONTRACT DOCUMENT'S LIGHTING LAYOUTS, FOR ORDERING THE CORRECT PRODUCTS AND IN THE CORRECT QUANTITIES.						
TYPE	DESCRIPTION	MANUFACTURER	CATALOG NUMBER	LAMP	MOUNTING	COMMENTS
F1	THIS FIXTURE TYPE IS NOT USED ON THE GOLDWALK.					
F2	THIS FIXTURE TYPE IS NOT USED ON THE GOLDWALK.					
F3	THIS FIXTURE TYPE IS NOT USED ON THE GOLDWALK.					
F4	CATENARY PENDANT LIGHT, SYMMETRIC BEAM SPREAD, WET RATED, PROVIDE ALL CATENARY POLES, CABLE, ANCHORS, TURN BUCKLES, AND OTHER MOUNTING ACCESSORIES AS REQUIRED FOR A COMPLETE INSTALLATION.	WE-EF	FIXTURE: AOP534 LED-FT 655-2522	3010 LUMENS, 27W, 2700K, 90+ CRI	CATENARY SYSTEM	CONFIRM DIMMING EQUIPMENT AND ACCESSORIES WITH THE PROJECT ELECTRICAL ENGINEER PRIOR TO PURCHASE. CONTRACTOR IS RESPONSIBLE FOR PROVIDING A CATENARY SYSTEM COMPLETE IN ALL RESPECTS AND CAPABLE OF CARRYING THE CUMULATIVE LOAD OF THE TYPE F4 FIXTURES, TYPE F9 FIXTURES. CONFIRM SYSTEM TO BE INSTALLED CAN BEAR THIS LOAD WITH MINIMAL "SAG" WITH PROJECT'S STRUCTURAL ENGINEER PRIOR TO PURCHASE AND INSTALLATION. SEE STRUCTURAL ENGINEERING DETAILS.
F5	THIS FIXTURE TYPE IS NOT USED ON THE GOLDWALK.					
F6	FIXTURE: LINEAR RGBW LED "GRAZER" TYPE FIXTURE WITH 20 DEGREE X 80 DEGREE BEAM SPREAD, ADJUSTABLE MOUNT, AND REMOTE POWER SOURCE, DIMMABLE, WET LISTED.	LUMASCAPE	LS9010 - 05D 4BW 63 NH 3 A S 13 DB 002	RGBW WITH ROYAL BLUE WITH 1,100 LUMEN OUTPUT AND 7' W/FT	ART WALL CABINET INTERIOR	(1) FIXTURE PER CABINET SEGMENT, MOUNTED AT BOTTOM OF INTERIOR CABINET SPACE, APPROXIMATELY 4 INCHES FROM BACKER WALL. DATA INJECTORS, POWER SUPPLIES, AND LEADER CABLES AS REQUIRED. DMX CONTROLLER FOR BOTH THE ART WALL AND BRAND WALL.
	DATA INJECTOR		LS6550			
	POWER SUPPLY		LSLED600W - 48V 09			
	LEADER CABLE		LS6426 - PS 050			
	DMX CONTROLLER		LS6950 - B			INQUIRE WITH RENE IF 1 FT VS 2 FT CABLE BETWEEN FIXTURES IS REQUIRED (WILL SPARE CALBE BE VISIBLE?)
F7	THIS FIXTURE TYPE IS NOT USED ON THE GOLDWALK.					
F8	THIS FIXTURE TYPE IS NOT USED ON THE GOLDWALK.					
F9	CATENARY ATTACHED HOLIDAY LIGHTING LIGHT STRING WITH UL WEATHERPROOF MEDIUM BASE SOCKET MOUNTED 24" ON CENTER TO 12/2 GAUGE, BLACK FLEXIBLE WIRE RATED FOR 25 AMPS AND OUTDOOR USE. EQUIP WITH DIMMABLE MEDIUM BASE 2400K LED LAMPS SUITABLE FOR EXTERIOR USE, AND ALL MOUNTING AND DIMMING ACCESSORIES RECOMMENDED BY THE MANUFACTURER. LENGTHS AS SHOWN ON PLANS.	PRIMUS LIGHTING	DECOSTRING -- DSW-24-120-PLD-S14F-24K-160-LENGTH	"S" TYPE, 1.6 WATT, 2400K LED	CATENARY SYSTEM	CONFIRM DIMMING EQUIPMENT AND ACCESSORIES WITH THE PROJECT ELECTRICAL ENGINEER PRIOR TO PURCHASE. CONTRACTOR IS RESPONSIBLE FOR PROVIDING A CATENARY SYSTEM COMPLETE IN ALL RESPECTS AND CAPABLE OF CARRYING THE CUMULATIVE LOAD OF THE TYPE F4 FIXTURES, TYPE F9 FIXTURES. CONFIRM SYSTEM TO BE INSTALLED CAN BEAR THIS LOAD WITH MINIMAL "SAG" WITH PROJECT'S STRUCTURAL ENGINEER PRIOR TO PURCHASE AND INSTALLATION. SEE STRUCTURAL ENGINEERING DETAILS.
F10	DESCRIPTION: LED BOLLARD LIGHT - 20" HIGH, WITH SHIELDED 360 DEGREE DISTRIBUTION, DIE CAST ALUMINUM WITH BLACK MARINE GRADE FINISH, IP65 WET RATED AND EQUIPPED WITH 120-277 VOLT ELECTRONIC LED 0-10V DIMMING DRIVER.	BEGA	99862-BLK FIXTURE MODULE / 99615-BLK BOLLARD TUBE / 79817 ANCHOR KIT	16.5 WATT 2700K / 90+ CRI	BOLLARD	CONFIRM 2700K/90+ CRI IS AN AVAILABLE LAMP, MAKE MODIFICATION TO SPECIFIED COLOR IF NECESSARY.

SAMPLE REFERENCE NOTE DRAWING CALLOUT:



NOTE: "X" REFERS TO DRAWING SERIES (i.e. SITE DEMOLITION REFERENCE NOTES). THERE SHOULD BE SPECIFIC REFERENCE NOTES FOR EACH DRAWING SERIES. HOWEVER, SOME NOTES MAY APPEAR ON MULTIPLE SERIES AS APPLICABLE.

Steamboat
ALTRERA east west partners
MOUNTAIN COMPANY

2305 Mount Werner Circle
Steamboat Springs, CO 80487

Gensler

1225 17th Street
Suite 150
Denver, CO 80202
United States

Tel 303.595.8585
Fax 303.625.6823



DESIGNWORKSHOP

141 9th Street
PO Box 774943
Denver, CO 80204
80477
Tel 970.871.9494

1390 Lawrence Street
Suite 100
Denver, CO 80204
Tel 303.623.5186



me engineers

1499 West Colfax Ave.
Lakewood, CO 80215
United States
Tel 303.431.6100

14143 Denver West Pkwy
Suite 300
Golden, CO
United States
Tel 303.421.6655

Reviewed for
Code Compliance
10/25/2021

Date	Description
2021.05.19	BP3: PROMENADE - ISSUE FOR BID AND PERMIT
2021.10.01	BP3: GOLDWALK - RF-097

Seal / Signature

Project Name
BP3 PROMENADE PERMIT AND CONSTRUCTION

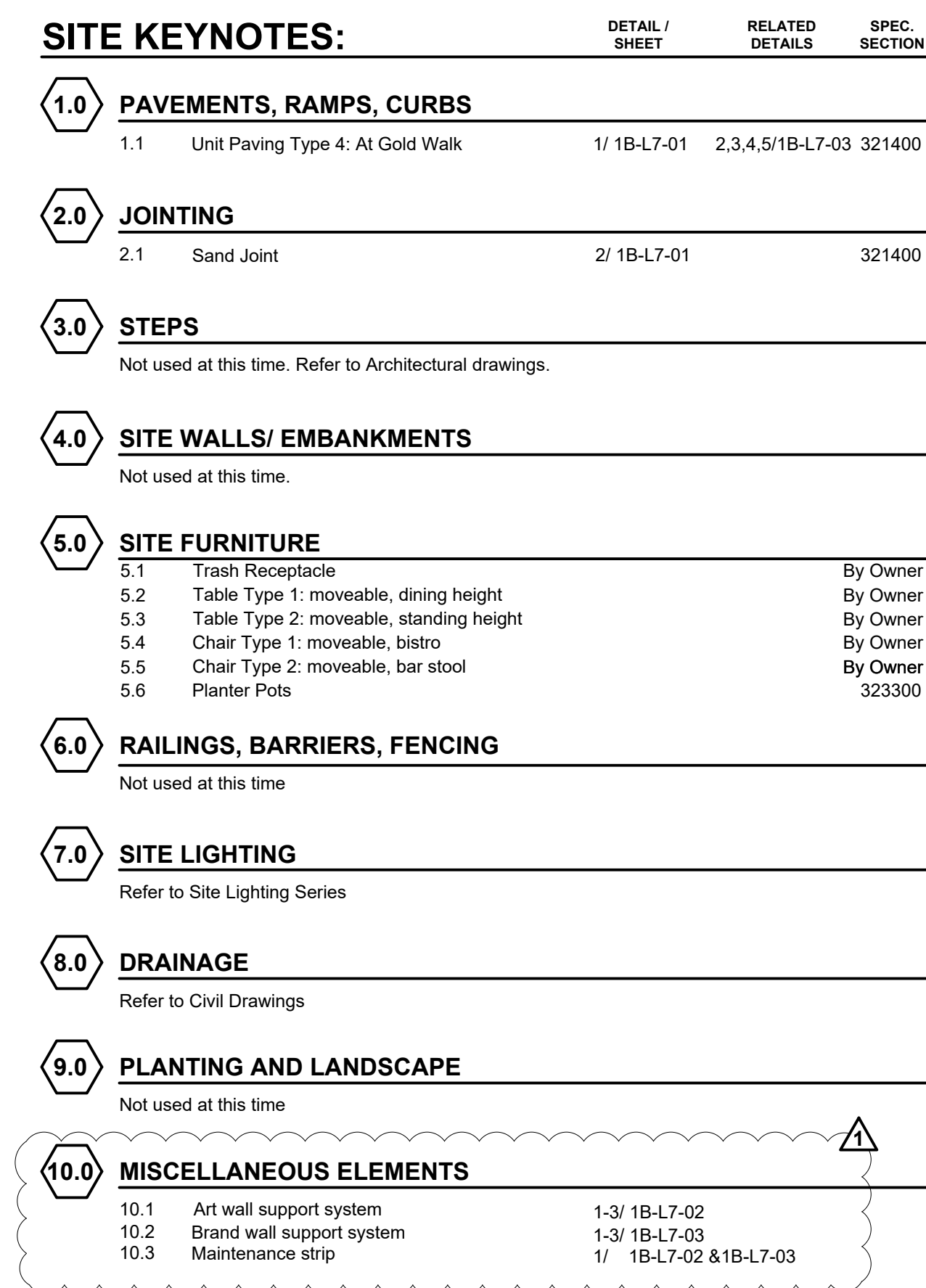
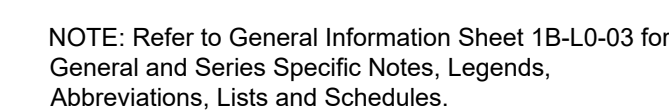
Project Number
003.7835.000

DW Project Number
6466

Description
BP3: PROMENADE - ISSUE FOR BID AND PERMIT

GENERAL
INFORMATION
SHEET

1B-L0-04



- 1 Refer to CIVIL for drainage structure information.
- 2 Refer to ELECTRICAL for electrical information.
- 3 Refer to L6 Lighting Series for lighting information.
- 4 Provide Water and Electrical for temporary connection to food and beverage carts.
- 5 Refer to ARCHITECTURE for railing
- 6 Refer to ARCHITECTURE for stair and escalator.
- 7 Snowmelt manifold, box, and Wundercover - refer to MECHANICAL.
- 8 Proposed paving to be flush with adjacent existing paving.
- 9 Existing to remain.
- 10 Art Wall, refer to shop drawings from Zahner
- 11 Brand Wall, refer to shop drawings from Zahner

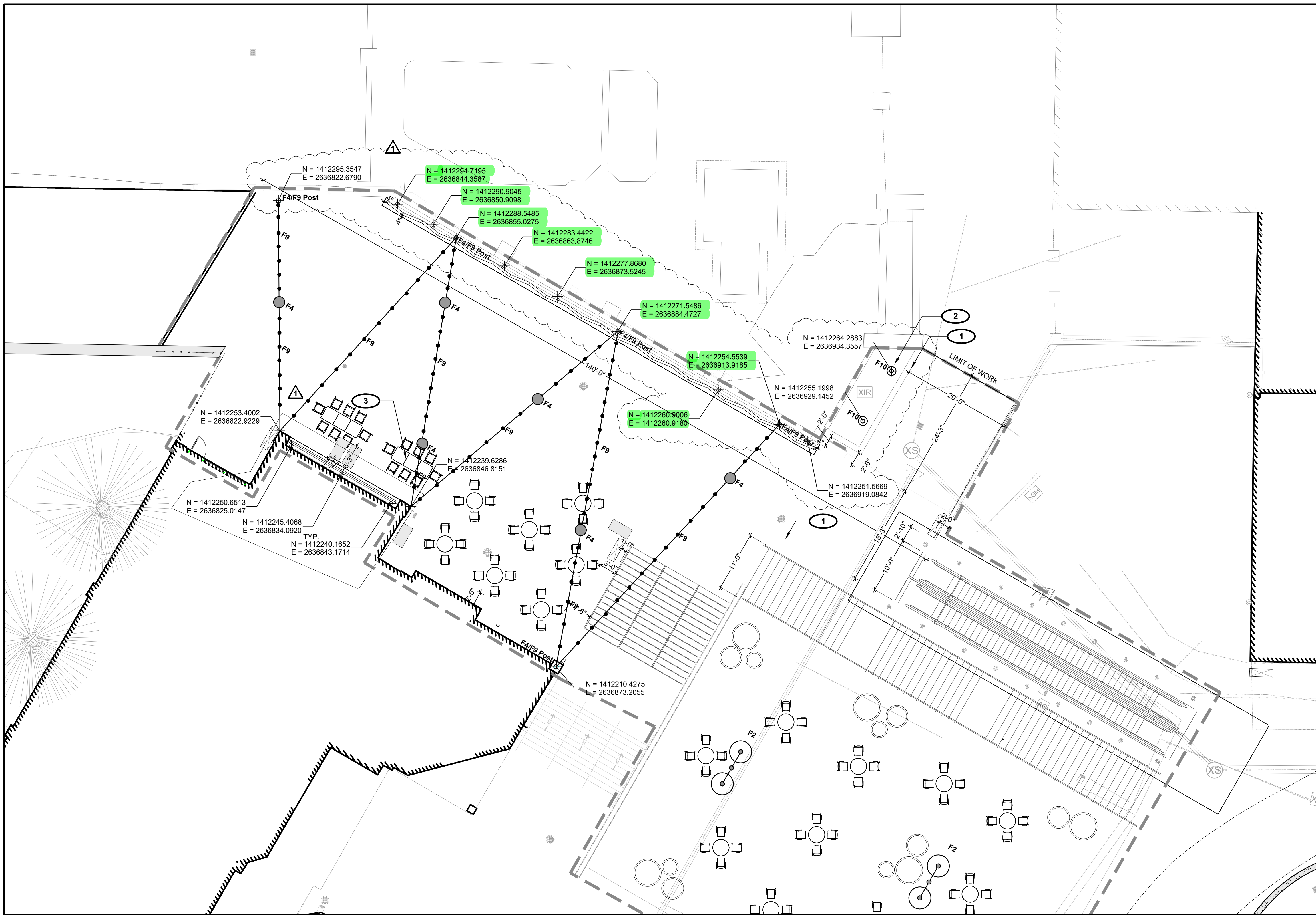
△	Date	Description
-	2021.05.19	BP3: GOLDWALK - ISSUE FOR BID AND PERMIT
1	2021.10.01	BP3: GOLDWALK - RFI-097

Seal / Signature

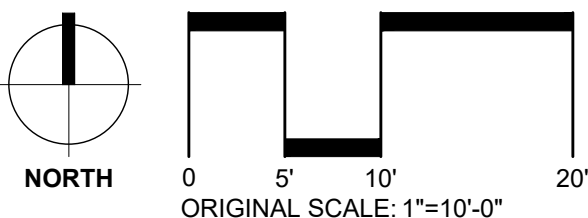
Project Name	
BP3 GOLDWALK PERMIT AND CONSTRUCTION	
Project Number	DW Project Number
003.7835.000	6466
Description	
BP3: GOLDWALK - ISSUE FOR BID AND PERMIT	

SITE MATERIALS PLAN

1B-L3-01



NOTE: Refer to General Information Sheet 1B-L0-03 for General and Series Specific Notes, Legends, Abbreviations, Lists and Schedules.



SITE LAYOUT REFERENCE NOTES

- 1 Align unit paving pattern with wall.
- 2 Existing to remain. Do not disturb.
- 3 Final location to be determined in the field by the Resort.



2305 Mount Werner Circle
Steamboat Springs, CO 80487

Gensler

1225 17th Street
Suite 150
Denver, CO 80202
United States
Tel 303.595.8585
Fax 303.625.6823



141 9th Street
PO Box 774943
Steamboat Springs, CO
80477
Tel 970.871.9494

DESIGNWORKSHOP

1390 Lawrence Street
Suite 100
Denver, CO 80204
Tel 303.623.5186



12499 West Colfax Ave.
Lakewood, CO 80215
United States
Tel 303.431.6100



14143 Denver West Pkwy
Suite 300
Golden, CO
United States
Tel 303.421.6655

Reviewed for
Code Compliance

10/25/2021

Date	Description
2021.05.19	BP3: GOLDWALK - ISSUE FOR BID AND PERMIT
2021.09.29	BP3: GOLDWALK - RFI-097

Seal / Signature

Project Name

BP3 GOLDWALK PERMIT
AND CONSTRUCTION

Project Number

003.7835.000

DW Project Number

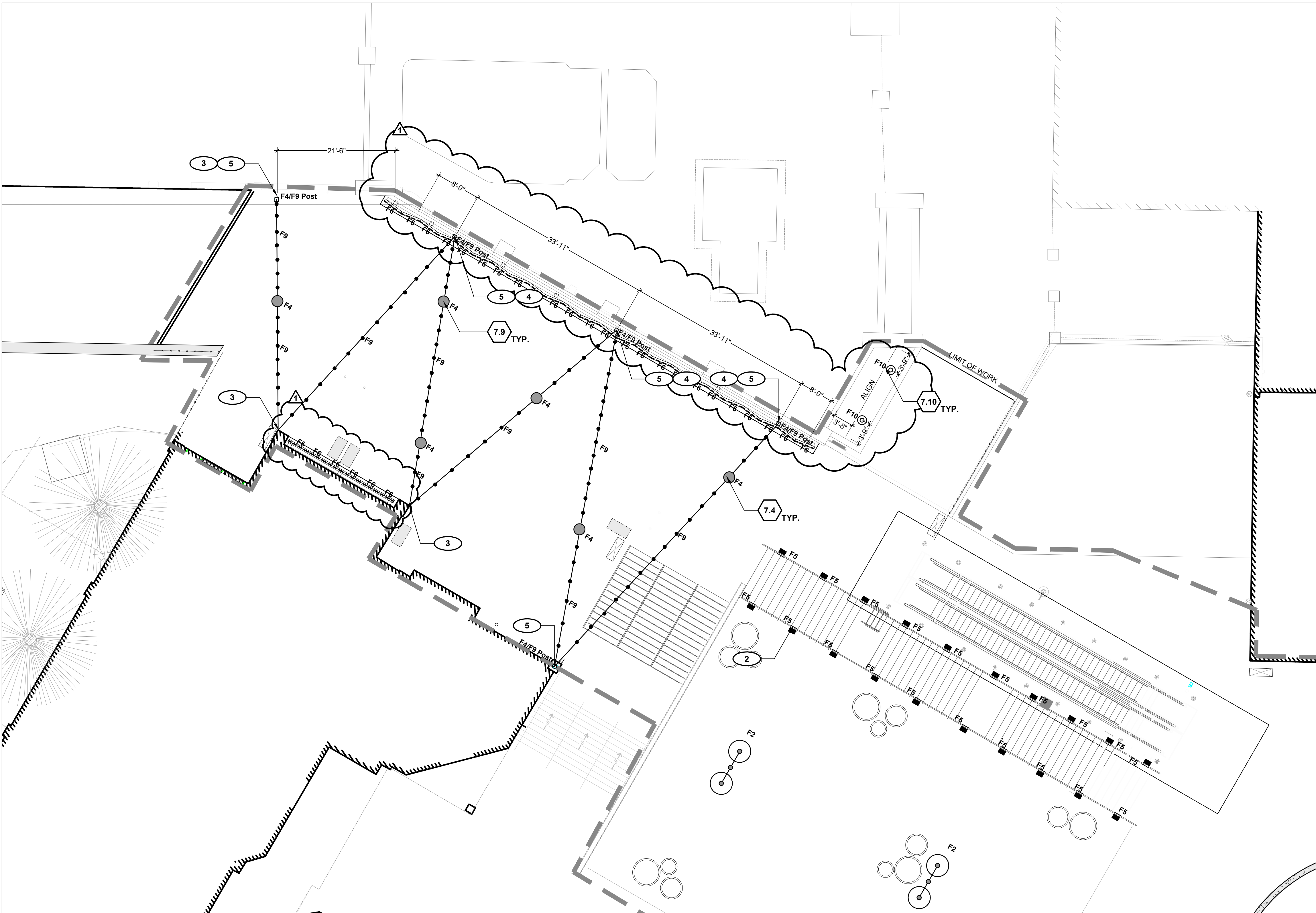
6466

Description

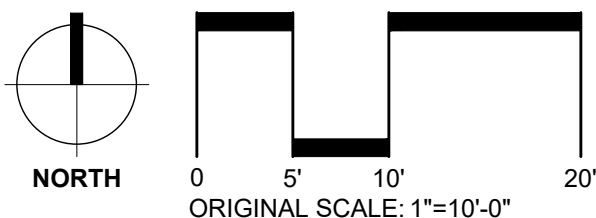
BP3: GOLDWALK - ISSUE FOR BID
AND PERMIT

SITE
LAYOUT
PLAN

1B-L4-01



NOTE: Refer to General Information Sheet L0-04 for General and Series Specific Notes, Legends, Abbreviations, Lists, Schedules, and Mockup details.



SITE KEYNOTES:

	DETAIL / SHEET	RELATED DETAILS	SPEC. SECTION
7.0	Lighting		
7.2	Double-Headed Pedestrian Light (F2)	Ref Electric	Ref Electric
7.4	Catenary Down Light (F4)	Ref Electric	Ref Electric
7.9	Catenary Attached Holiday Lights (F9)	Ref Electric	Ref Electric
7.10	Round Bollard (F10)	Ref Electric	Ref Electric

SITE LIGHTING REFERENCE NOTES

- 1 Refer to L0-03 - General Information Sheet for fixture list and lighting schedule (TYP).
- 2 Reference Electrical Drawings for stair, escalator, and escalator canopy lighting, controls, power distribution, receptacle locations, and emergency lighting (TYP).
- 3 Reference Structural Engineering drawings for catenary support information including pole and building anchors (TYP).
- 4 Catenary poles are located between Art Wall and hotel wall. Contractor to allow for access to pole. See structural engineering drawings for details.
- 5 Catenary pole to be located over and fastened to existing foundation structure. Contractor to verify exact locations with structural engineer. See mounting details in structural engineering drawings.

2305 Mount Werner Circle
Steamboat Springs, CO 80487

Gensler

1225 17th Street
Suite 150
Denver, CO 80202
United States
Tel 303.595.8585
Fax 303.625.6823



DESIGNWORKSHOP

141 9th Street
PO Box 774943
Steamboat Springs, CO
80477
Tel 970.871.9494

1390 Lawrence Street
Suite 100
Denver, CO 80204
Tel 303.623.5186



12499 West Colfax Ave.
Lakewood, CO 80215
United States
Tel 303.431.6100



14143 Denver West Pkwy
Suite 300
Golden, CO
United States
Tel 303.421.6655

Reviewed for
Code Compliance

10/25/2021

△	Date	Description
-	2021.05.19	BP3: GOLDWALK - ISSUE FOR BID AND PERMIT
1	2021.10.01	BP3: GOLDWALK - RFI-097

Seal / Signature

Project Name

BP3 GOLDWALK PERMIT
AND CONSTRUCTION

Project Number

003.7835.000

DW Project Number

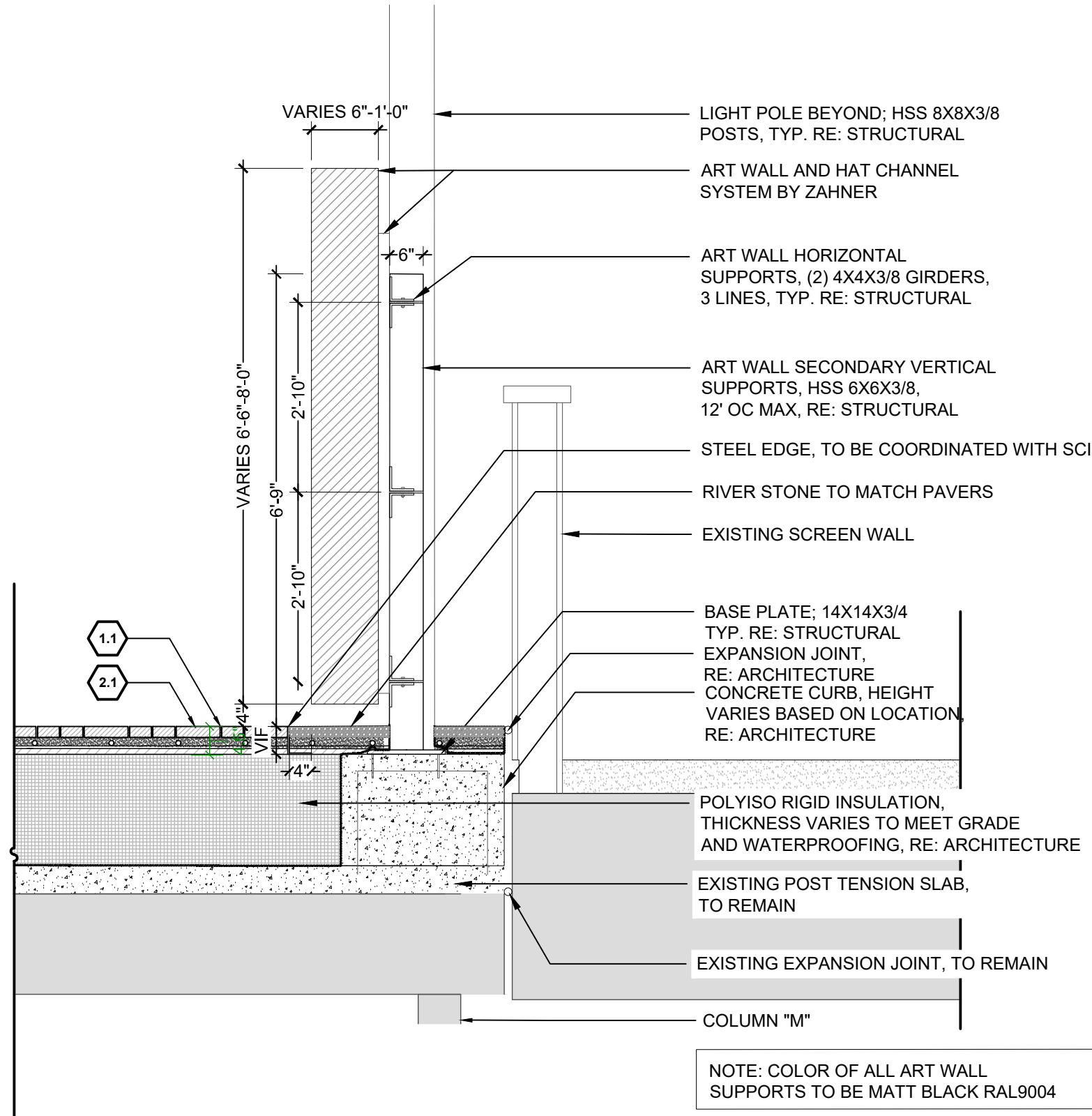
6466

Description

BP3: GOLDWALK - ISSUE FOR BID
AND PERMIT

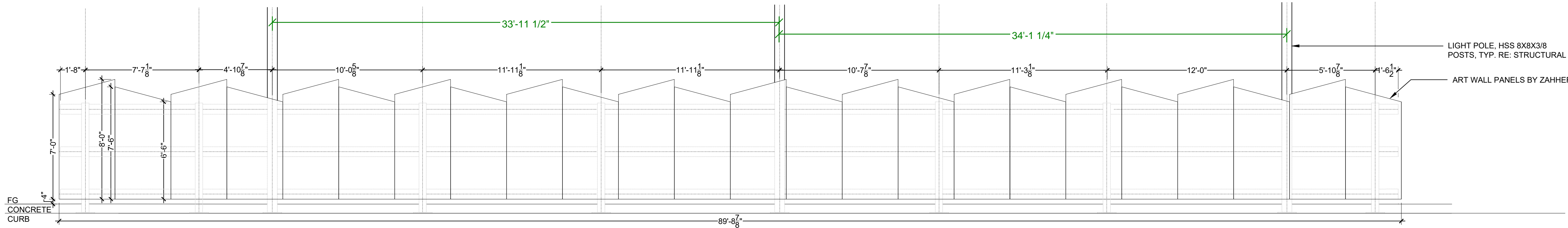
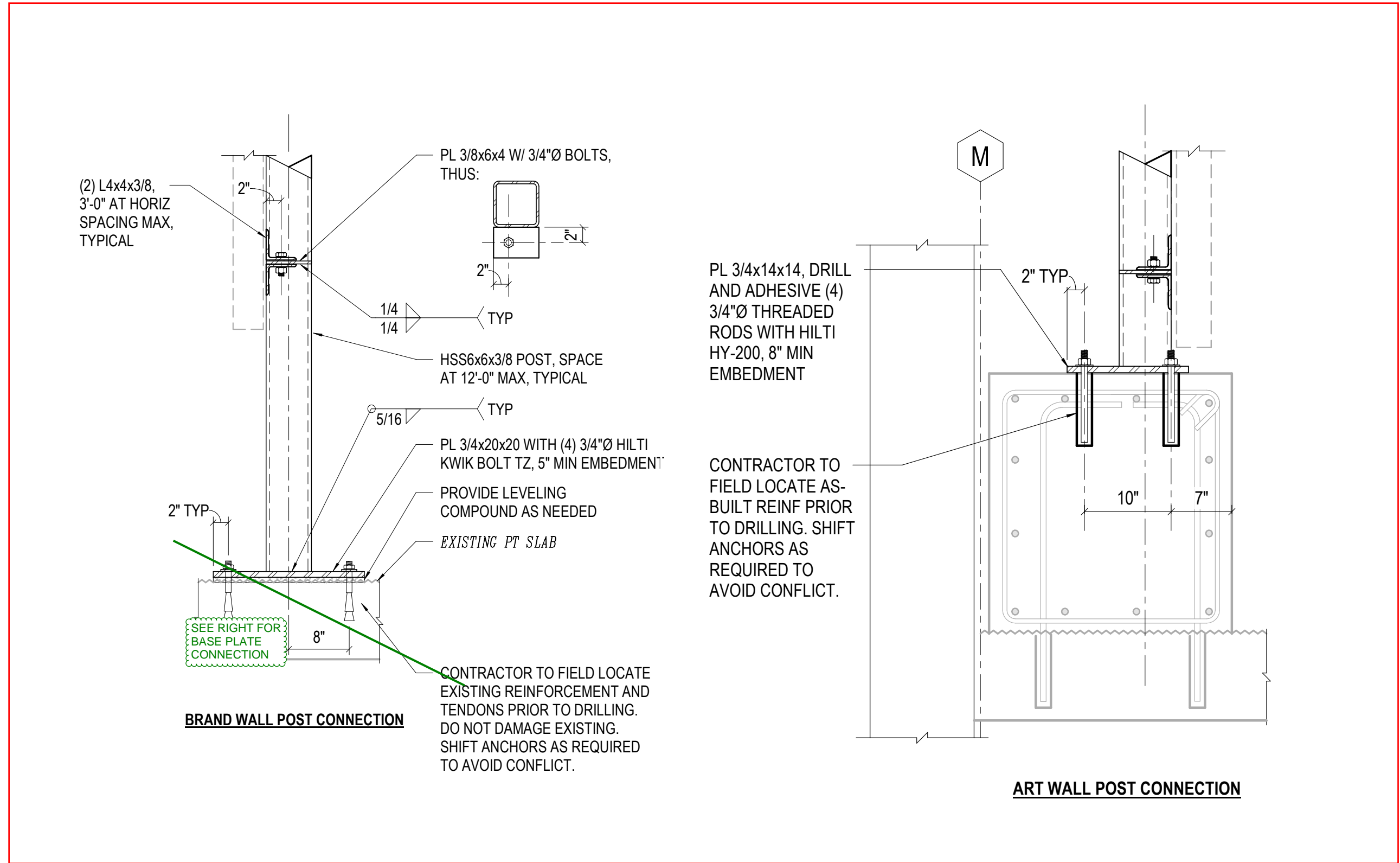
**SITE
LIGHTING
PLAN**

1B-L6-01



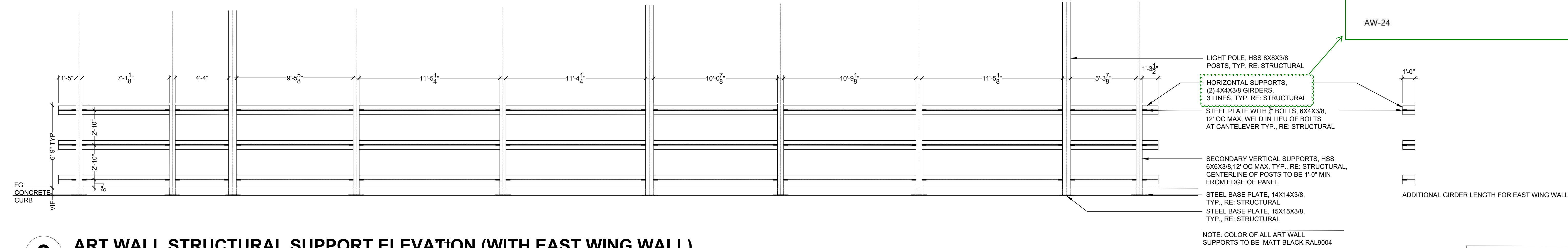
1 ART WALL SECTION

1/2"=1'-0"



2 ART WALL ELEVATION

1/4"=1'-0"



3 ART WALL STRUCTURAL SUPPORT ELEVATION (WITH EAST WING WALL)

1/4"=1'-0"

SITE KEYNOTES:	DETAIL / SHEET	RELATED DETAILS	SPEC. SECTION
1.0 PAVEMENTS, RAMPS, CURBS	1.1 Unit Paving Type 4: At Gold Walk	1/ 1B-L7-01	2,3,4,5/1B-L7-03 321400
2.0 JOINTING	2.1 Sand Joint	2/ 1B-L7-01	321400
3.0 STEPS	Not used at this time. Refer to Architectural drawings.		
4.0 SITE WALLS/ EMBANKMENTS	Not used at this time.		
5.0 SITE FURNITURE	5.1 Trash Receptacle	By Owner	
	5.2 Table Type 1: moveable, dining height	By Owner	
	5.3 Table Type 2: moveable, standing height	By Owner	
	5.4 Chair Type 1: moveable, bistro	By Owner	
	5.5 Chair Type 2: moveable, bar stool	By Owner	
	5.6 Planter Pots	By Owner	325300
6.0 RAILINGS, BARRIERS, FENCING	Not used at this time		
7.0 SITE LIGHTING	Refer to Site Lighting Series		
8.0 DRAINAGE	Refer to Civil Drawings		
9.0 PLANTING AND LANDSCAPE	Not used at this time		
10.0 MISCELLANEOUS ELEMENTS	10.1 Art wall support system	1-3/ 1B-L7-02	
	10.2 Brand wall support system	1-3/ 1B-L7-03	
	10.3 Maintenance strip	1/ 1B-L7-02 & 1B-L7-03	

NOTE: SCI TO VERIFY FIELD SUB-SURFACE DIMENSIONS FOR TOTAL STEEL LENGTHS AND ALL MATERIAL REQUIREMENTS PRIOR TO PROCURING STEEL

NOTE: Refer to General Information Sheet 1B-L0-03 for General and Series Specific Notes, Legends, Abbreviations, Lists and Schedules.

Steamboat
ALTRERRA east west partners
MOUNTAIN COMPANY
2305 Mount Werner Circle
Steamboat Springs, CO 80487

Gensler

1225 17th Street
Suite 150
Denver, CO 80202
United States
Tel 303.595.8585
Fax 303.625.6823

LANDMARK
CONSTRUCTORS, INC.

141 9th Street
PO Box 774943
Steamboat Springs, CO 80477
Tel 970.871.9494

DESIGNWORKSHOP

1390 Lawrence Street
Suite 100
Denver, CO 80204
Tel 303.623.5186

MARTIN/MARTIN
CONSULTING ENGINEERS

12499 West Colfax Ave.
Lakewood, CO 80215
United States
Tel 303.431.6100

me
engineers

14143 Denver West Pkwy
Suite 300
Golden, CO
United States
Tel 303.421.6655

Reviewed for
Code Compliance

10/25/2021

Date	Description
2021.05.19	BP3: GOLDWALK - ISSUE FOR BID AND PERMIT
2021.10.01	BP3: GOLDWALK - RFI-097

Seal / Signature

Project Name

BP3 GOLDWALK PERMIT
AND CONSTRUCTION

Project Number

003.7835.000

DW Project Number

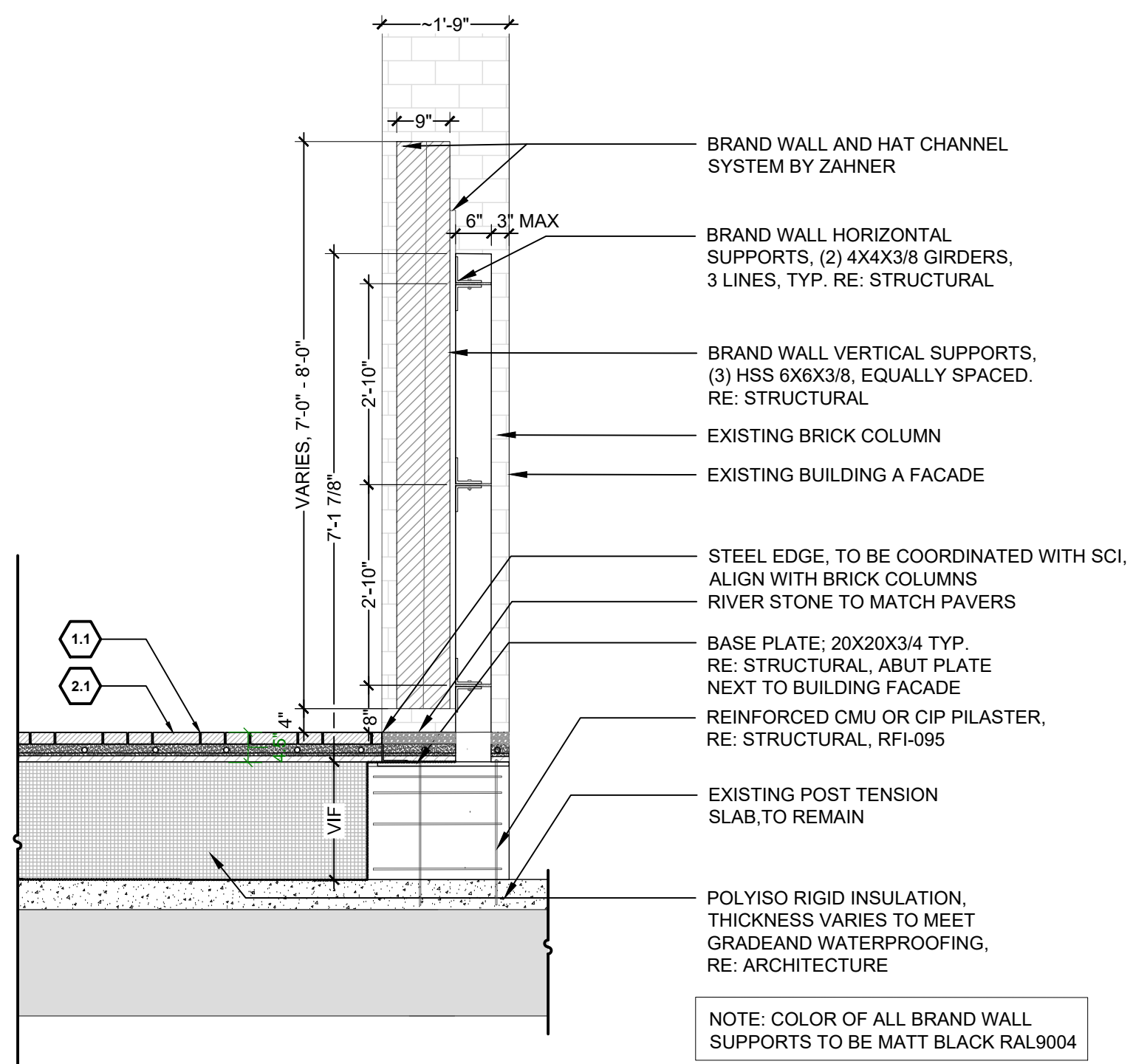
6466

Description

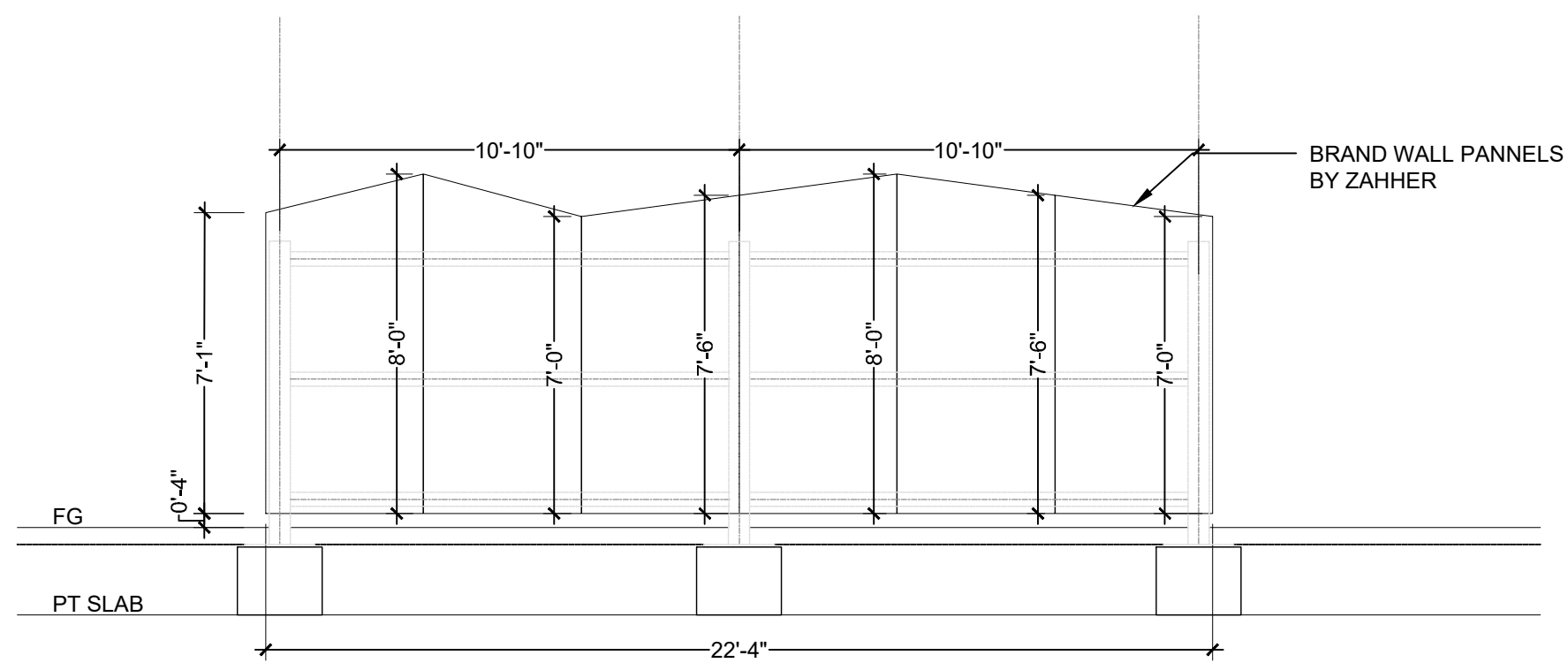
BP3: GOLDWALK - ISSUE FOR BID
AND PERMIT

SITE
DETAILS

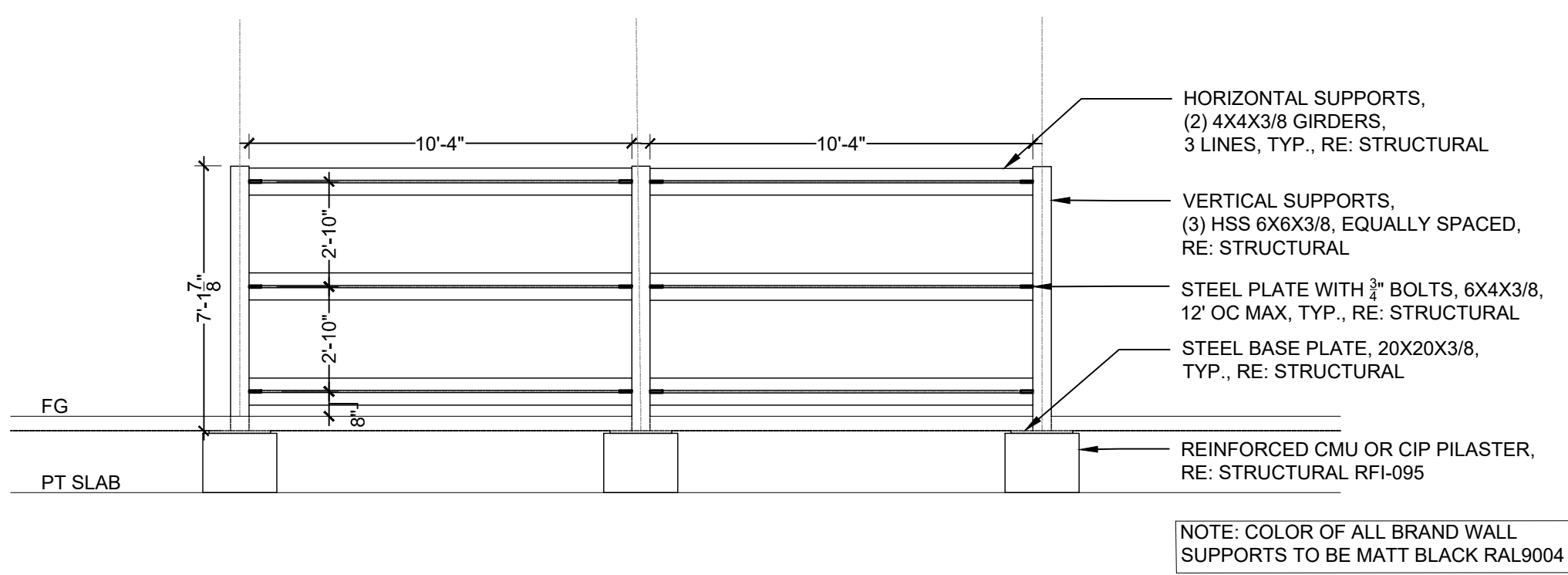
1B-L7-02



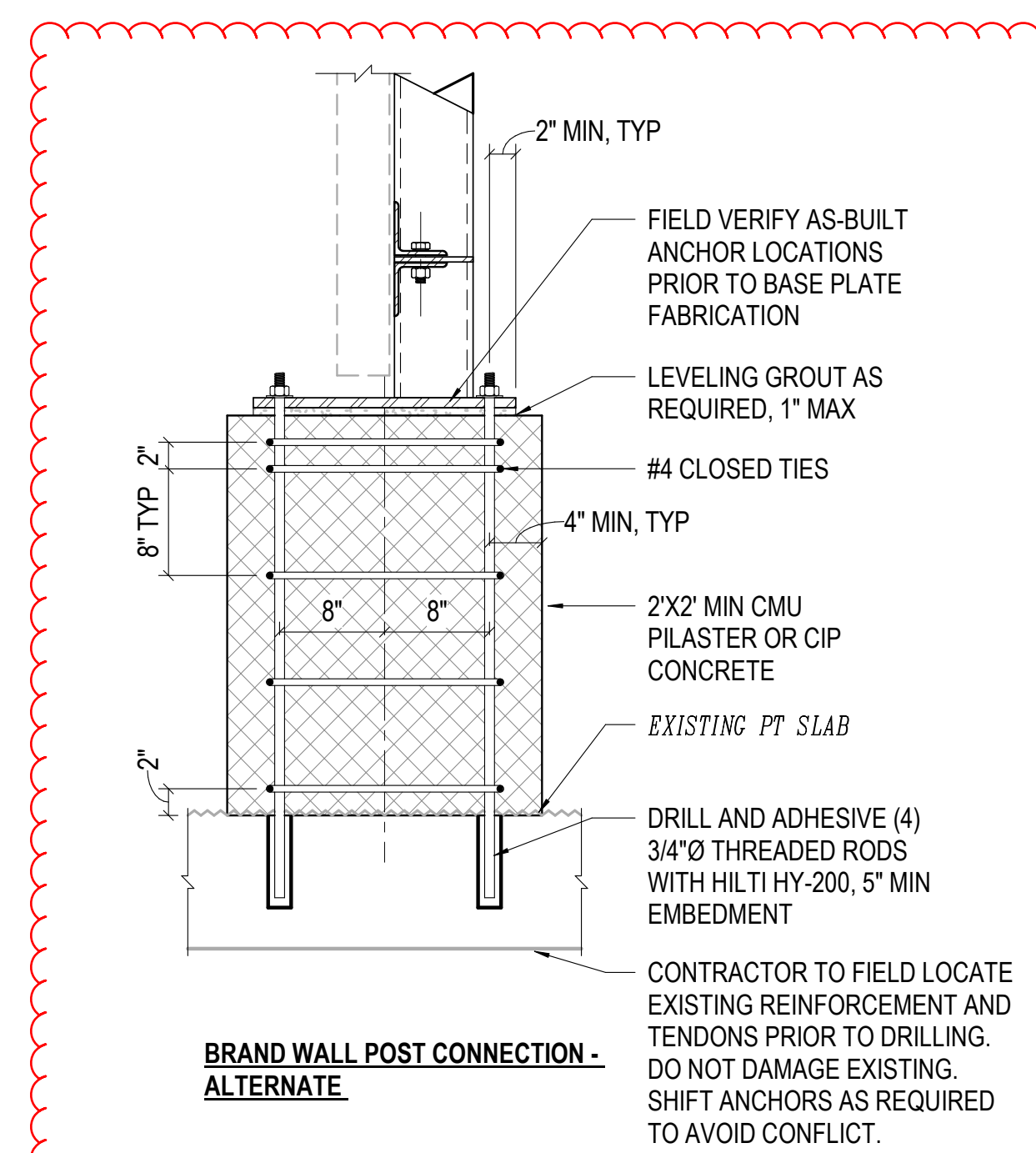
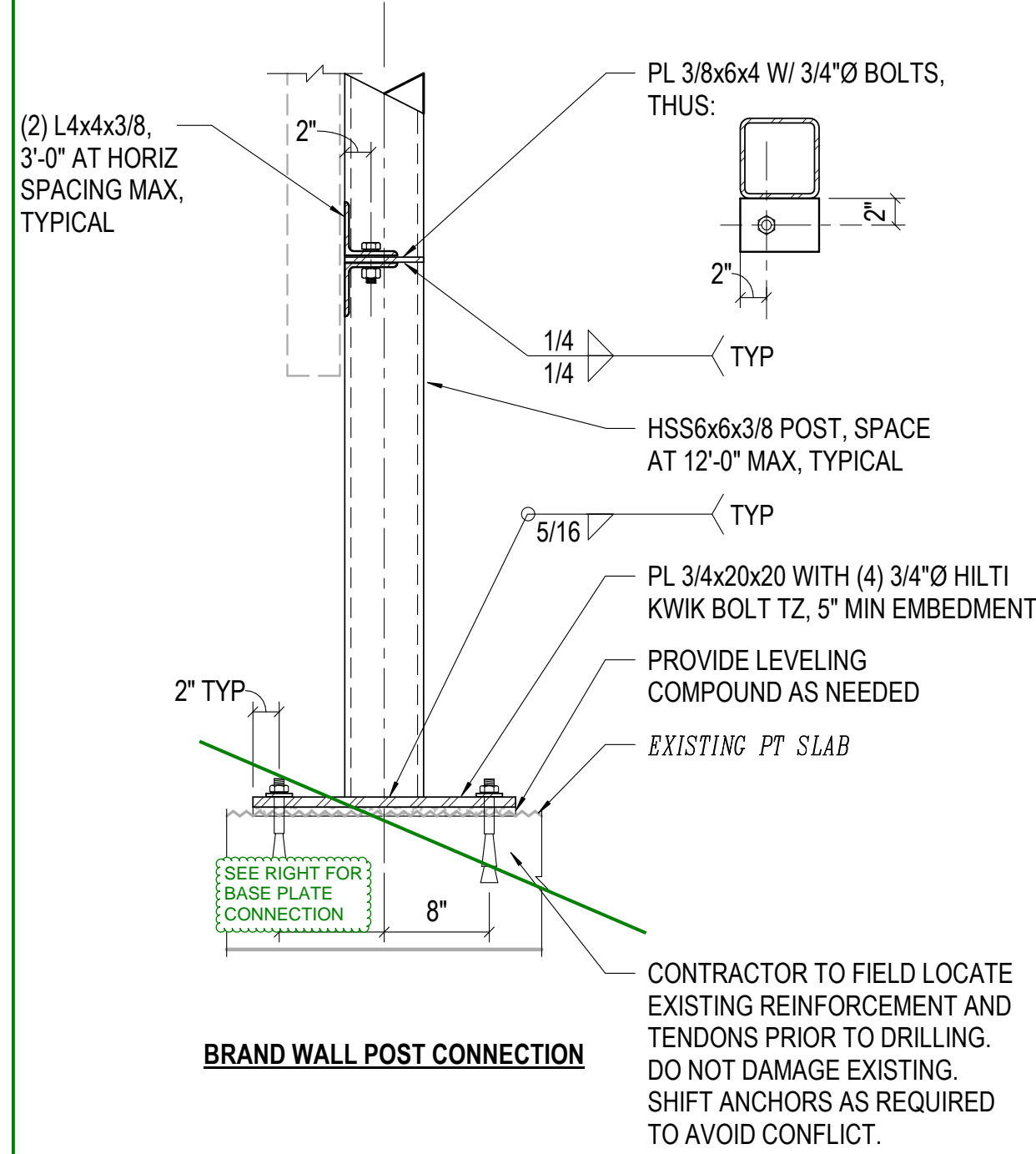
1 BRAND WALL SECTION
1/2"=1'-0"



2 BRAND WALL ELEVATION
1/4"=1'-0"



3 BRAND WALL STRUCTURAL SUPPORT ELEVATION
1/4"=1'-0"



M/M detail provided 9/30/21

SITE KEYNOTES:		DETAIL / SHEET	RELATED DETAILS	SPEC. SECTION
1.0	PAVEMENTS, RAMPS, CURBS			
1.1	Unit Paving Type 4: At Gold Walk	1/ 1B-L7-01	2,3,4,5/1B-L7-03	321400
2.0	JOINTING			
2.1	Sand Joint	2/ 1B-L7-01		321400
3.0	STEPS			
	Not used at this time. Refer to Architectural drawings.			
4.0	SITE WALLS/ EMBANKMENTS			
	Not used at this time.			
5.0	SITE FURNITURE			
5.1	Trash Receptacle	By Owner		
5.2	Table Type 1: moveable, dining height	By Owner		
5.3	Table Type 2: moveable, standing height	By Owner		
5.4	Chair Type 1: moveable, bistro	By Owner		
5.5	Chair Type 2: moveable, bar stool	By Owner		
5.6	Planter Pots	325300		
6.0	RAILINGS, BARRIERS, FENCING			
	Not used at this time			
7.0	SITE LIGHTING			
	Refer to Site Lighting Series			
8.0	DRAINAGE			
	Refer to Civil Drawings			
9.0	PLANTING AND LANDSCAPE			
	Not used at this time			
10.0	MISCELLANEOUS ELEMENTS			
10.1	Art wall support system	1-3/ 1B-L7-02		
10.2	Brand wall support system	1-3/ 1B-L7-03		
10.3	Maintenance strip	1/ 1B-L7-02 & 1B-L7-03		

NOTE: SCI TO VERIFY FIELD SUB-SURFACE DIMENSIONS FOR TOTAL STEEL LENGTHS AND ALL MATERIAL REQUIREMENTS PRIOR TO PROCURING STEEL

NOTE: Refer to General Information Sheet 1B-L0-03 for General and Series Specific Notes, Legends, Abbreviations, Lists and Schedules.



ALERRA east west partners
MOUNTAIN COMPANY

2305 Mount Werner Circle
Steamboat Springs, CO 80487

Gensler

1225 17th Street
Suite 150
Denver, CO 80202
United States

Tel 303.595.8585
Fax 303.625.6823



141 9th Street
PO Box 774943
Steamboat Springs, CO 80477
Tel 970.871.9494



1390 Lawrence Street
Suite 100
Denver, CO 80204
Tel 303.623.5186



14143 Denver West Pkwy
Suite 300
Golden, CO
United States
Tel 303.421.6655

12499 West Colfax Ave.
Lakewood, CO 80215
United States
Tel 303.431.6100

△	Date	Description
-	2021.05.19	BP3: GOLDWALK - ISSUE FOR BID AND PERMIT
1	2021.10.01	BP3: GOLDWALK - RFI-097

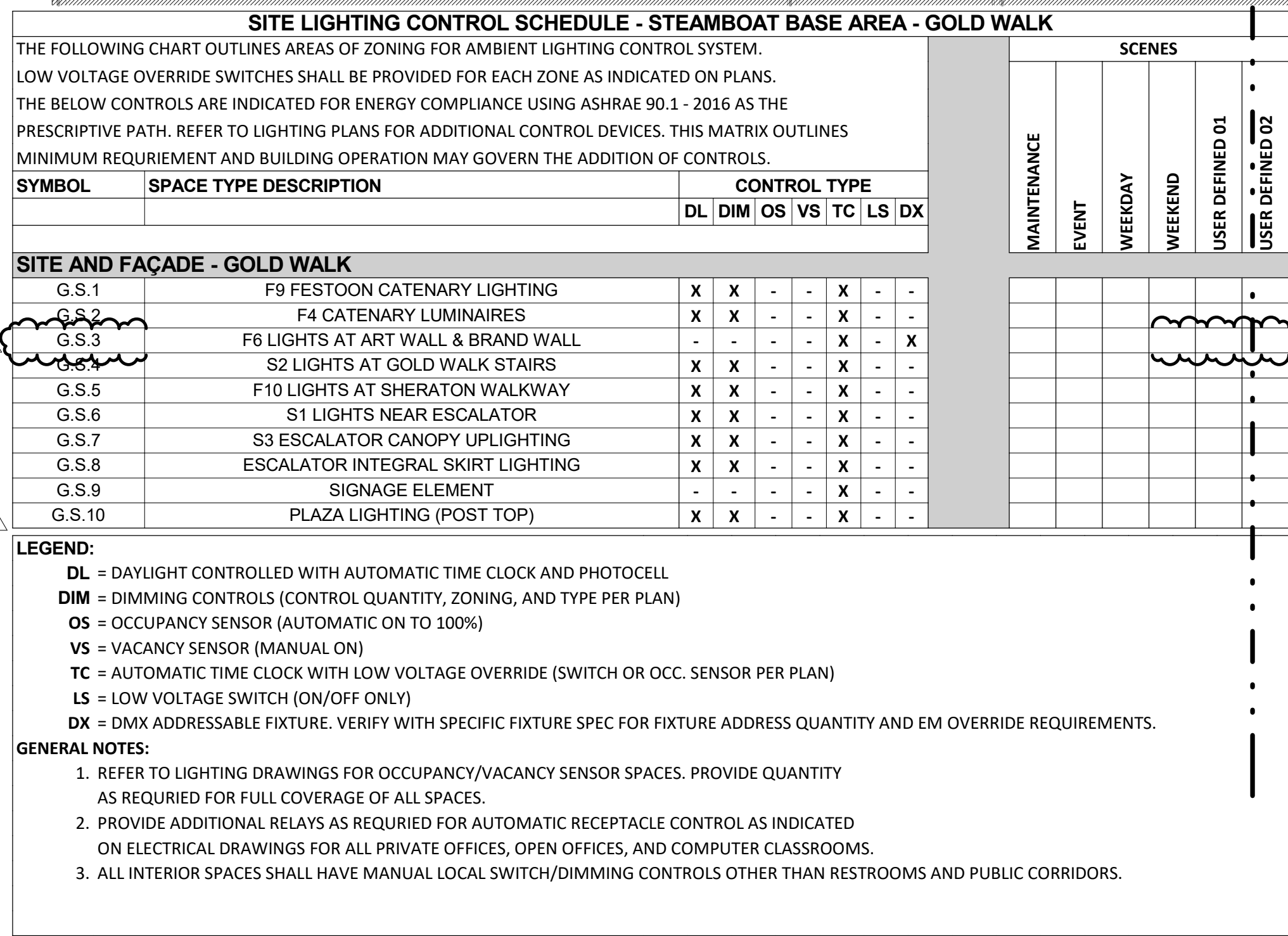
Seal / Signature

Project Name	
BP3 GOLDWALK PERMIT AND CONSTRUCTION	
Project Number	DW Project Number
003.7835.000	6466
Description	
BP3: GOLDWALK - ISSUE FOR BID AND PERMIT	

SITE DETAILS

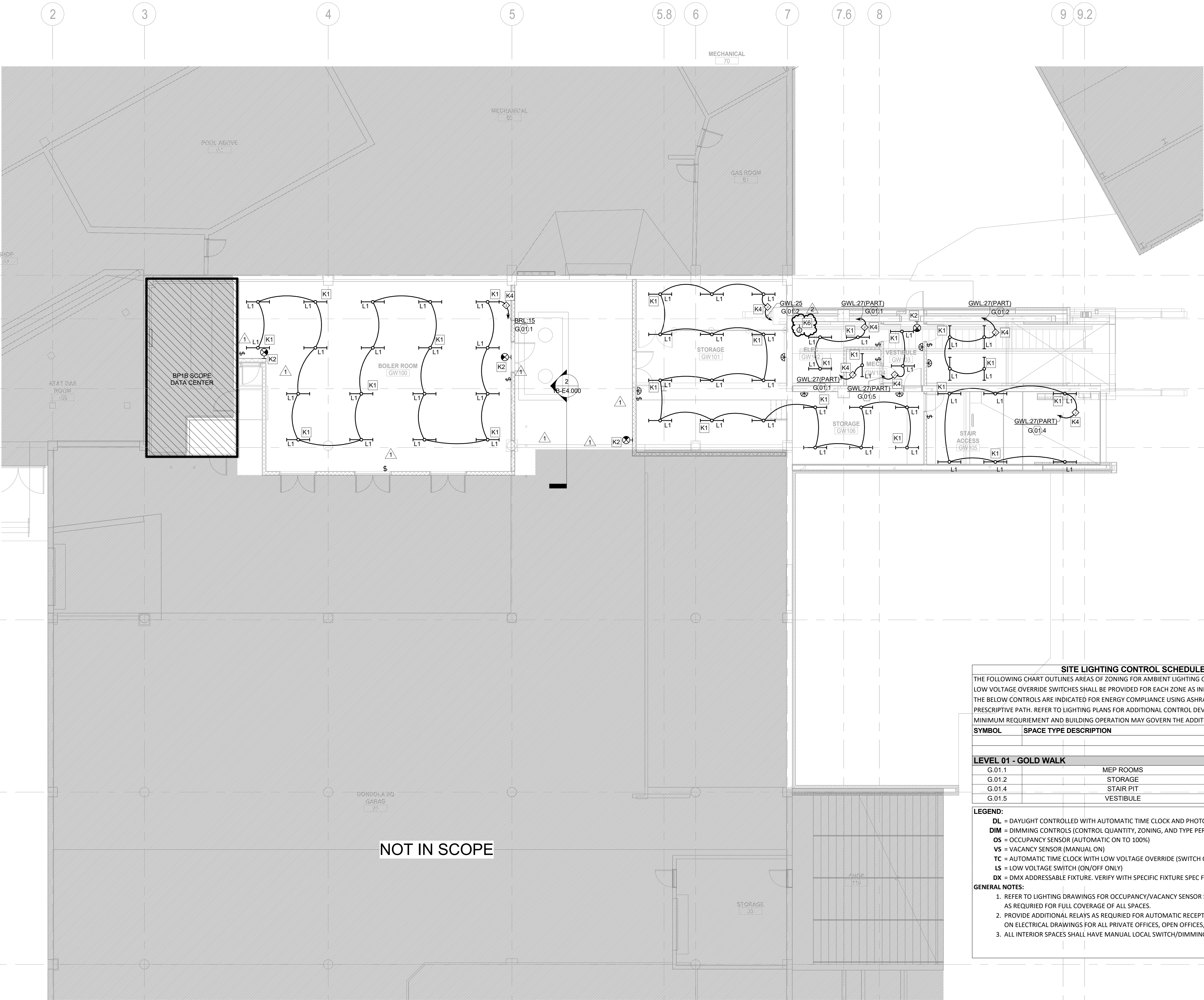
1B-L7-03

Steamboat Base Village Redevelopment												ME Engineers Inc.												PANEL			BRH																				
480/277 Wye												BUS: 600 A												ENCLOSURE			Type 1																				
3 Phase, 4 Wire + Gnd. 60Hz.												MAINS: 600 A - MCB												MOUNTING			Surface																				
SCCR:												GROUND BAR: Copper												FED FROM:			MDS																				
NOTES:												OPTIONS:												LEVEL:			PLAZA - LEVEL 01																				
												FEED THROUGH LUGS												LOCATION:																							
												PROVIDE SHUNT MAIN BREAKER												ISSUE DATE:																							
												TIED TO EPO.																																			
																											REFER TO DETAILS & SPECIFICATION SECTION FOR																				
																											PANELBOARD LAMINATED PLIQUE REQUIREMENTS.																				
N	LC	DESCRIPTION										P	OC	CKT	A	B	C	CKT	OC	P	DESCRIPTION										LC	N															
--	M	HWP 1B.01										3	20	1	2217	3048		2	20	3	HWP 1B.09										M	--															
--	--	---										--	--	3	--	--	--	--	--	--	---										--	--															
--	--	---										--	--	5	--	--	--	--	--	--	---										--	--															
M	M	HWP 1B.02										3	20	7	2217	3880		6	20	3	HWP 1B.10										M	--															
--	--	---										--	--	9	--	--	--	--	--	--	---										--	--															
--	--	---										--	--	11	--	--	--	--	--	--	---										--	--															
M	M	HWP 1B.03										3	20	13	2217	3880		14	20	3	HWP 1B.11										M	--															
--	--	---										--	--	15	--	--	--	--	--	--	---										--	--															
--	--	---										--	--	17	--	--	--	--	--	--	---										--	--															
M	M	HWP 1B.04										3	20	19	2217	3880		20	20	3	HWP 1B.12										M	--															
--	--	---										--	--	21	--	--	--	--	--	--	---										--	--															
--	--	---										--	--	23	--	--	--	--	--	--	---										--	--															
M	M	HWP 1B.05										3	20	25	2217	0		26	20	3	SPARE										--	--															
--	--	---										--	--	27	--	--	--	--	--	--	---										--	--															
--	--	---										--	--	29	--	--	--	--	--	--	---										--	--															
--	--	SPARE										3	20	31	0	0		32	20	3	SPARE										--	--															
--	--	---										--	--	33	--	--	--	--	--	--	---										--	--															
--	--	SPARE										3	20	37	0	0		38	30	3	SPARE										--	--															
--	--	---										--	--	39	--	--	--	--	--	--	---										--	--															
--	--	---										--	--	41	--	--	--	--	--	--	---										--	--															
M	M	HWP 1B.06										3	20	43	3048	0		44	30	3	SPARE										--	--															
--	--	---										--	--	45	--	--	--	--	--	--	---										--	--															
--	--	---										--	--	47	--	--	--	--	--	--	---										--	--															
--	--	SPARE										3	20	49	0	0		50	30	3	SPARE										--	--															
--	--	---										--	--	51	--	--	--	--	--	--	---										--	--															
--	--	---										--	--	53	--	--	--	--	--	--	---										--	--															
--	--	SPARE										3	20	55	0	9904		56	70	3	T-BRL										L	--															
--	--	---										--	--	57	--	--	--	--	--	--	---										--	--															
--	--	---										--	--	59	--	--	--	--	--	--	---										--	--															
PER PHASE VA WITH DOWNSTREAM LOADS												LOAD SUMMARY WITH DOWNSTREAM LOADS INCLUDED												AMPS @ 480/277 Wye																							
PHASE		A		B		C		TOTALS		CATEGORY		CONNECTED		FACTOR		CALC. V-A																															
CALC		89451		89177		89081		236739		LIGHTING		376		100%		376		0																													
CNCTD		80568		79420		75352		237521		RECEPTACLE		1000		100%		1000		1																													
										MOTOR		213528		112%		239716		288																													
										MISCELLANEOUS		1750		100%		1750		2																													
DOWNSTREAM FEED THROUGH LUG PANELS												KITCHEN												ELECTRIC HEAT																							
																								20785																							
																								100%																							
																								20785																							
																								25																							
CONDUCTOR COLORS (EC TO LABEL IN PANEL)												ELECTRIC HEAT																																			
20B/120												EV CHARGING																																			
BLACK												EXISTING																																			
A												BROWN																																			
B												ORANGE																																			
C												YELLOW																																			
N												WHITE																																			
G												WHITE GRAY STRIPE																																			
	GREEN																																														
TOTAL												237521												263708												317											



SCALE: 1/8" = 1'-0"

© 2021 Gensler



GENERAL NOTES:

1. ALL EXPOSED CONDUIT SHALL BE ROUTED PERPENDICULAR, PARALLEL, AND TIGHT TO COLUMNS AND BEAMS. ALL EXPOSED CONDUIT ROUTING SHALL BE COORDINATED WITH THE ARCHITECT PRIOR TO INSTALLATION AND INSTALLED IN A NEAT AND CONSISTENT MANNER. NO ADDITIONAL COST TO OWNER WILL BE ALLOWED FOR RELOCATING CONDUIT DUE TO THE LACK OF COORDINATION WITH ARCHITECT. ALL SURFACE MOUNTED CONDUIT WHERE EXPOSED TO PUBLIC AREAS SHALL BE PAINTED. PAINT COLOR TO BE DETERMINED BY THE ARCHITECT.

2. CONTRACTOR SHALL PROVIDE SHOP DRAWINGS INDICATING ALL PROPOSED EXPOSED CONDUIT ROUTING.

3. ELECTRICAL CONTRACTOR TO COORDINATE WITH MECHANICAL CONTRACTOR AND CABLETRAY/IT CONTRACTOR FOR PLACEMENT OF FIXTURES WITHIN ROOMS.

4. REFER TO LIGHTING DESIGNER DRAWINGS FOR EXACT MOUNTING AND DETAILS FOR POWER TO ALL SITE LIGHTING FIXTURES.

- KEYNOTES**
- K1 PROVIDE INTEGRAL 90-MINUTE BATTERY PACK WITHIN LIGHT FIXTURE. BATTERY SHALL BE CIRCUITED TO THE LINE SIDE OF THE LINE VOLTAGE SWITCH CONTROLLING THE LIGHTS WITHIN THIS ROOM.
- K2 PROVIDE EXIT SIGN TYPE "LITHONIA LOM-44-VOL-T-EL-N" (OR APPROVED EQUAL) WITH FACE AND CHEVRON INDICATOR AS INDICATED PER PLAN. EXIT SIGN COLOR TO BE APPROVED BY AHJ. EXIT SIGN TO HAVE INTEGRAL 90-MINUTE MINIMUM BATTERY PACK. PROVIDE (1) SPARE EXIT SIGN OF SAME TYPE FOR LOCATION PER AHJ PRIOR TO SUBSTANTIAL COMPLETION.
- K4 PROVIDE SINGLE ZONE DISTRIBUTED ROOM CONTROLLER FOR LIGHTING CONTROL WITHIN THIS SPACE. ROOM CONTROLLER SHALL HAVE ON/OFF RELAY CONTROL ONLY. ROOM CONTROLLER SHALL BE MOUNTED INSIDE BUILDING OR WITHIN NEMA 3R ENCLOSURE ON SITE. REFER TO LIGHT FIXTURE SCHEDULE FOR EXACT CONNECTION REQUIREMENTS PER LIGHT FIXTURE TYPE. PROVIDE NETWORK CONNECTION FOR THIS ROOM CONTROLLER TO THE OVERALL NETWORKED LIGHTING CONTROL SYSTEM. REFER TO DETAIL 11/E8.002 FOR MORE INFORMATION.
- K6 POWER SUPPLY AND DATA INJECTOR ASSOCIATED WITH F6 LIGHT FIXTURE AT ART WALL AND BRAND WALL TO BE LOCATED IN ACCESSIBLE LOCATION WITHIN THIS ROOM. REFER TO SITE LIGHTING PLAN AND LIGHTING DESIGNER PLANS FOR ADDITIONAL INFORMATION.

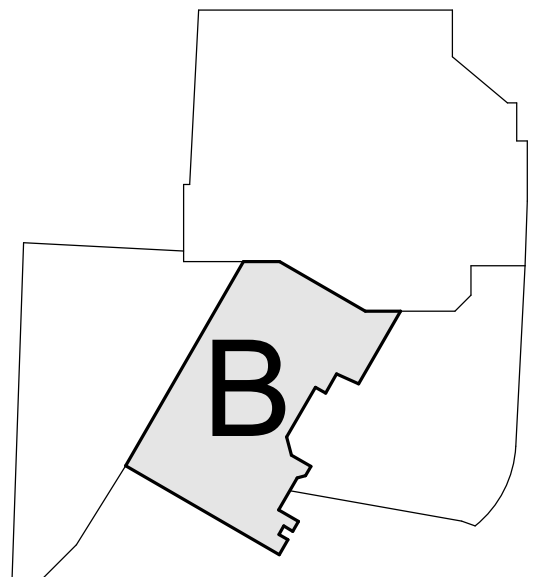
SITE LIGHTING CONTROL SCHEDULE - STEAMBOAT BASE AREA - GOLD WALK															
THE FOLLOWING CHART OUTLINES AREAS OF ZONING FOR AMBIENT LIGHTING CONTROL SYSTEM. LOW VOLTAGE OVERRIDE SWITCHES SHALL BE PROVIDED FOR EACH ZONE AS INDICATED ON PLANS. THE BELOW CONTROLS ARE INDICATED FOR ENERGY COMPLIANCE USING ASHRAE 90.1 - 2016 AS THE PRESCRIPTIVE PATH. REFER TO LIGHTING PLANS FOR ADDITIONAL CONTROL DEVICES. THIS MATRIX OUTLINES MINIMUM REQUIREMENT AND BUILDING OPERATION MAY GOVERN THE ADDITION OF CONTROLS.										SCENES					
										MAINTENANCE	EVENT	WEEKDAY	WEEKEND	USER DEFINED 01	USER DEFINED 02
SYMBOL	SPACE TYPE DESCRIPTION		CONTROL TYPE												
			DL	DIM	OS	VS	TC	LS	DX						
LEVEL 01 - GOLD WALK															
G.01.1		MEP ROOMS	-	-	-	-	-	-	X	-					
G.01.2		STORAGE	-	-	-	X	-	-	X	-					
G.01.4		STAIR PIT	-	-	-	-	-	-	X	-					
G.01.5		VESTIBULE	-	-	-	X	-	-	X	-					

LEGEND:

DL = DAYLIGHT CONTROLLED WITH AUTOMATIC TIME CLOCK AND PHOTOCELL
DIM = DIMMING CONTROLS (CONTROL QUANTITY, ZONING, AND TYPE PER PLAN)
OS = OCCUPANCY SENSOR (AUTOMATIC ON TO 100%)
VS = VACANCY SENSOR (MANUAL ON)
TC = AUTOMATIC TIME CLOCK WITH LOW VOLTAGE OVERRIDE (SWITCH OR OCC. SENSOR PER PLAN)
LS = LOW VOLTAGE SWITCH (ON/OFF ONLY)
DX = DMX ADDRESSABLE FIXTURE. VERIFY WITH SPECIFIC FIXTURE SPEC FOR FIXTURE ADDRESS QUANTITY AND EM OVERRIDE REQUIREMENTS.

- GENERAL NOTES:**
1. REFER TO LIGHTING DRAWINGS FOR OCCUPANCY/VACANCY SENSOR SPACES. PROVIDE QUANTITY AS REQUIRED FOR FULL COVERAGE OF ALL SPACES.
2. PROVIDE ADDITIONAL RELAYS AS REQUIRED FOR AUTOMATIC RECEPTACLE CONTROL AS INDICATED ON ELECTRICAL DRAWINGS FOR ALL PRIVATE OFFICES, OPEN OFFICES, AND COMPUTER CLASSROOMS.
3. ALL INTERIOR SPACES SHALL HAVE MANUAL LOCAL SWITCH/DIMMING CONTROLS OTHER THAN RESTROOMS AND PUBLIC CORRIDORS.

KEY PLAN



Gensler

1225 17th Street
Suite 150
Denver, CO 80202
United States

Tel 303.595.8586
Fax 303.825.6823



141 9th Street
PO Box 774943
Steamboat Springs, CO 80477
Tel 970.871.9494

DESIGNWORKSHOP

1390 Lawrence Street
Suite 100
Denver, CO 80204
Tel 303.623.5186



12499 West Cofax Ave.
Lakewood, CO 80215
United States
Tel 303.431.6100



14143 Denver West Pkwy
Suite 300
Golden, CO
United States
Tel 303.421.6655

Reviewed for
Code Compliance

10/25/2021

Date	Description
2021.05.19	BP3: GOLDWALK - ISSUE FOR BID AND PERMIT
2021.06.25	BP3: GOLDWALK - BULLETIN 2
2021.10.01	BP3: RFI-097

Seal / Signature

Project Name

SSRC | BASE AREA
IMPROVEMENTS

Project Number

003.7835.000

Description

GOLD WALK - LIGHTING PLAN - LEVEL 01

Scale

1/8" = 1'-0"

1B-E2.201

Alec Hallman

From: Stephen Carrolla <scarrolla@designworkshop.com>
Sent: Tuesday, September 28, 2021 3:27 PM
To: Jacob Apple; Bryan Sculthorpe
Cc: Geoffrey Brooksher; Alec Hallman; Juan Padilla; Tom Klein; Alex Jackson
Subject: RE: Steamboat - Art Wall and Brand Wall

This message originated outside of Saunders Construction. Even if this looks like a Saunders e-mail, it is not.

Bryan/Alec,

What RFI number would you like us to use for the Art and Brand Wall plan and detail revisions?

These sheet revisions will be part of the BP3 Goldwalk drawings.

Thank you

Stephen Carrolla, PLA

DESIGNWORKSHOP

1390 Lawrence Street, Suite 100
Denver, Colorado 80204
720 749-1338 (direct)
303 623-5186 (main)
www.designworkshop.com



From: Jacob Apple <Jacob_Apple@gensler.com>
Sent: Monday, September 27, 2021 3:08 PM
To: Becky Zimmermann <bzimmermann@designworkshop.com>; Jon Gambrill <jon_gambrill@gensler.com>; Bryan Sculthorpe <b.sculthorpe@saundersinc.com>
Cc: Stephen Carrolla <scarrolla@designworkshop.com>; Geoffrey Brooksher <Geoffrey_Brooksher@gensler.com>; Alec Hallman <A.Hallman@saundersinc.com>; Juan Padilla <Juan_Padilla@gensler.com>
Subject: FW: Steamboat Bulletin - Art Wall and Brand Wall

Becky, Jon, Bryan,

Last week we discussed that the art and brand wall updates to BP3 would be included in the document set as the response to an RFI. Today I heard DW still plans to issue it as a bulletin.

The design team can accommodate either. Please just confirm the appropriate approach!

Thanks,
Jacob

I plan to be on paternity leave and unavailable October 4th – October 29th (dates subject to early or late arrival)!

While project teams have made plans to accommodate my leave and cover responsibilities, your efforts to plan accordingly are greatly appreciated as well.

Jacob Apple, NCARB
+1 303.893.7163 Direct
+1 303.595.8585 Main

Gensler
1225 17th Street
Suite 150
Denver, Colorado 80202
USA

From: Tom Klein <tklein@designworkshop.com>
Sent: Monday, September 27, 2021 2:29 PM
To: Jacob Apple <Jacob_Apple@gensler.com>
Cc: Cary D'Alo Place <Cary_DAlaPlace@gensler.com>; Stephen Carrolla <scarrolla@designworkshop.com>
Subject: Steamboat Bulletin - Art Wall and Brand Wall

Jacob,

We are issuing a bulletin for the art and brand wall for this Thursday. Can you provide a Bulletin number for us to include in this issuance?

Thanks,

Tom Klein, WEDG, LEED® Green Associate™

DESIGNWORKSHOP

1390 Lawrence Street, Suite 100
Denver, Colorado 80204
720 907-9018 (direct)
303 623-5186 x9018 (main)
www.designworkshop.com



Confidentiality note: The above email and any attachments contain information that may be confidential and/or privileged. The information is for the use of the individual or entity originally intended. If you are not the intended recipient, any disclosure, copying, distribution or use of this information is prohibited. If this transmission is received in error, please immediately notify the sender and delete this message and its attachments, if any.

Confidentiality note: The above email and any attachments contain information that may be confidential and/or privileged. The information is for the use of the individual or entity originally intended. If you are not the intended recipient, any disclosure, copying, distribution or use of this information is prohibited. If this transmission is received in error, please immediately notify the sender and delete this message and its attachments, if any.

Alex Jackson

From: Ben Campbell <ben@cesteamboat.com>
Sent: Thursday, September 30, 2021 12:49 PM
To: Patrick Quigley; Alex Jackson
Cc: Bryan Sculthorpe; Jed Gibson; Stephen Carrolla
Subject: Re: FW: Electrical & Controls to Art/Brand Wall

This email originated from outside your organization.

[CAUTION: External]

Patrick,

TLA has advised that they could do a wave of sorts with the fresco controller. They highlighted "basic" shows are all that are possible with this. So there will be limitations, like "wave" speed for instance. They said this controller should be capable of 32 static color scenes. These color scenes could have a variety of colors to them, red-white-blue, green-red, rainbow, etc. With this controller, however, end user programmability is not too friendly; you would need a highly skilled programmer on staff to reprogram the scenes if desired. TLA offers a more robust option that can do "anything" with moving scenes if desired in the future. I'm not sure if this might require more cabling/pathways to the equipment room at this time.

Alex, we should be well within the parameters of the cable length from GW102 for each I will advise suppliers of the adjustments needed to the BOM.

Thank you!

On Thu, Sep 30, 2021 at 10:57 AM Patrick Quigley <pquigley@designworkshop.com> wrote:

Alex can you stay on the phone after our previously planned call at 1:00 – and we can discuss this?

Patrick Quigley, IALD

Lighting Design Principal

DESIGNWORKSHOP

527 W. 7th Street, Suite 508
Los Angeles, CA 90014
213 426-1761 (direct)
213 426-1760 x1761 (main)
www.designworkshop.com



From: Alex Jackson <Alex.Jackson@me-engineers.com>

Sent: Thursday, September 30, 2021 7:42 AM

To: Ben Campbell <ben@cesteamboat.com>; Bryan Sculthorpe <B.Sculthorpe@saundersinc.com>; Patrick Quigley <pquigley@designworkshop.com>

Cc: Jed Gibson <jed@cesteamboat.com>; Stephen Carrolla <scarrolla@designworkshop.com>

Subject: RE: FW: Electrical & Controls to Art/Brand Wall

Just got off the phone with the mfr.

We will need (2) power supplies and data injectors (CE to reach out to Lumascope to update BOM) for the Art wall and (1) power supply/data injector for the brand wall (total of 3 each). This comes from the table on the middle of page 5 (also below) where with a 600W power supply we are going to max out at 48' of fixture. Ben I did confirm the 164' is to the first fixture and then we have the fixture length from there. The brand wall is pretty straight forward but the Art wall is slightly more involved. With the 2 feeds to the wall I think what makes the most sense is to bring 1 feed to the first panel (sounds like roughly 150' Ben?) and then bring the second feed into about the fourth panel (wherever our circuit length is under 164' to the first fixture). Once inside the sign we will have to alternate the jumper between fixtures to keep each length under the max 48' run on a single power supply. Ben, feel free to call if needed and we can work through logistics.

Up to 24 luminaires per 48V PowerSync circuit / LS6550 Low Voltage Power

Maximum Circuit Loading - Single Run			
Power	Max Leader Cable Length from LS6550 to first fitting	Feet of Linear lu	
		120 W	240 W
5 W/ft	50 ft / 15 m	20	44
	98 ft / 30 m	20	44
	164 ft / 50 m	20	40
7 W/ft	50 ft / 15 m	14	28
	98 ft / 30 m	14	28
	164 ft / 50 m	14	26

Values in the above table show the maximum circuit loading per 48 V circuit.

Values are based on end to end spacing (ETE). Extended fixture cables, inclusion of jumper cables, or longer leader cable will effect load. Circuits can be made up of up to 24 fixtures in any length, up to the maximum circuit loading in the table above.

Circuits are limited to maximum 12.8A.

For non-continuous runs, contact Lumascope for details.

To calculate the maximum number of interconnected luminaires per run / circuit, see example below.

The above is how the RFI will be drawn and sent across today/tomorrow. I will send drawings to DW and then we can issue a consolidated response to SCI/CE to formalize this conversation.

From: Ben Campbell <ben@cesteamboat.com>

Sent: Wednesday, September 29, 2021 6:01 PM

To: Alex Jackson <Alex.Jackson@me-engineers.com>; Bryan Sculthorpe <B.Sculthorpe@saundersinc.com>; pquigley@designworkshop.com

Cc: Jed Gibson <jed@cesteamboat.com>

Subject: Re: FW: Electrical & Controls to Art/Brand Wall

This email originated from outside your organization.

[CAUTION: External]

Alex,

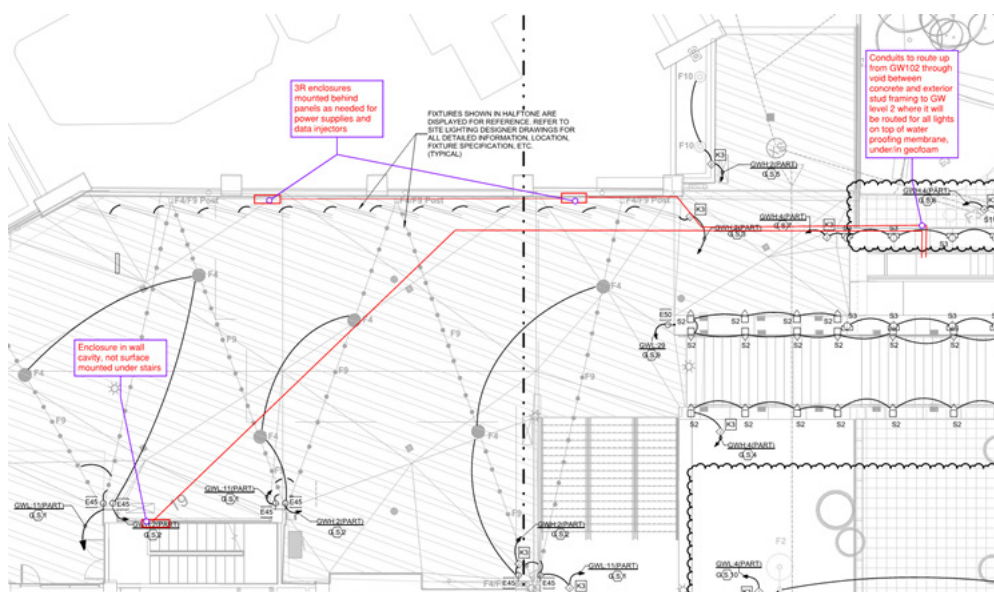
See snippet for proposed conduit routing if possible to keep electrical equipment in GW102. Thanks for sharing the desired effects conversation, I will pass this along to TLA and see if this is possible with our current BOM. It sounds like these effects should be basic enough. Let me know if our theory on cable lengths stands true, and we will build towards that.

Bryan and Patrick,

We have been in conversation on this with TLA for the past couple of days. I spoke with Alex on some clarifications on end user desired effect and physical equipment install locations. To keep you up to speed, we would like the power supplies and data injectors to be installed in the GW electric room. We think we have a good chance at making that happen, length limitations from the equipment to the lights would be the only hinderance to this plan, Alex is going to confirm with the mfg.

Regarding the desired scenes and light shows, we are a bit limited with the fresco controller that is currently in our BOM. It can do two basic light shows, static color scenes, and works with one universe. Fortunately, based on this thread, that sounds like enough to satisfy the current desired effects (at least for this year). We will confirm that tomorrow with TLA.

Thank you!



On Wed, Sep 29, 2021 at 5:36 PM Alex Jackson <Alex.Jackson@me-engineers.com> wrote:

FYI on the below for Goldwalk DMX scenes and fixture addressability.

From: Alex Jackson
Sent: Tuesday, September 28, 2021 2:24 PM
To: 'Patrick Quigley' <pquigley@designworkshop.com>
Subject: RE: Electrical & Controls to Art/Brand Wall

Sounds pretty cool! After a few beers on the ski slopes I could definitely see the seasick concern too though.

I think 12" is fine for segments with the possibility of 6" segments (1 universe per wall) might be the sweet spot as well inherently have the data enablers to provide that based on the load and circuiting requirements.

From: Patrick Quigley <pquigley@designworkshop.com>
Sent: Tuesday, September 28, 2021 1:51 PM
To: Alex Jackson <Alex.Jackson@me-engineers.com>
Subject: RE: Electrical & Controls to Art/Brand Wall

This email originated from outside your organization.

[CAUTION: External]

Hi Alex,

A dynamic effect that has been vended to the Owners by Renee (with no complaints from me) was the idea of a "wave" effect traveling horizontally along the Art Wall. In talking to Paul at Lumascape I decided that an entire panel fading up and down to create the wave was not quite granular enough – I wanted a "softer" more subtle effect, so I chose 12" addressable lengths. We have also discussed different colors for holidays, beyond that we have really not discussed additional effects, though I am sure we will come up with some.

The Brand Wall was going to rely mostly on being able to color match the Art Wall. We did not discuss a wave or other kinetic options – mainly because we were focused on the "snowflakes falling" effect that Renee wanted for that wall (thus the fiber optic system that just got VE'd out). With the snowflakes gone, I assume that there will be interest in possible effects using the Grazers (type F6 fixtures). We would probably have the "wave" available, though my own thoughts are to keep the Brand Wall static (I fear a little sea-sickness with both walls activated).

Patrick Quigley, IALD

Lighting Design Principal

DESIGNWORKSHOP

527 W. 7th Street, Suite 508
Los Angeles, CA 90014
213 426-1761 (direct)
213 426-1760 x1761 (main)
www.designworkshop.com



From: Alex Jackson <Alex.Jackson@me-engineers.com>
Sent: Tuesday, September 28, 2021 11:53 AM
To: Patrick Quigley <pquigley@designworkshop.com>
Subject: RE: Electrical & Controls to Art/Brand Wall

Sounds good Patrick. I think we're covered.

The addressing conversation comes from the level of dynamic lighting that the Owner wants. Are the lights within the metal perf panels going to be dynamically changing colors? If not, we don't need to segment the fixture into separate addresses. If for example you have a 3' light fixture within a single segment that you want to pulse within the segment or along the length of the wall then that will drive the answer to the number of addressable channels or lengths.

From: Patrick Quigley <pquigley@designworkshop.com>
Sent: Tuesday, September 28, 2021 12:07 PM
To: Alex Jackson <Alex.Jackson@me-engineers.com>
Cc: Bryan Sculthorpe <b.sculthorpe@saundersinc.com>; Renee Ludlam <rludlam@designworkshop.com>; Stephen Carrola <scarrola@designworkshop.com>; Alec Hallman <A.Hallman@saundersinc.com>; Jacob Apple <Jacob_Apple@gensler.com>; Matt O'Boyle <Matt.Ob Boyle@me-engineers.com>; Paul Benton <Paul.Benton@lumascape.com>; jed@cesteamboat.com; ben@cesteamboat.com
Subject: RE: Electrical & Controls to Art/Brand Wall

This email originated from outside your organization.

[CAUTION: External]

From my point of view – no.

As long as we can talk and you have direct contact with Paul Benton for technical questions, I don't think anyone else needs to be in this (though I am happy to include them).

Patrick Quigley, IALD

Lighting Design Principal

DESIGNWORKSHOP

527 W. 7th Street, Suite 508
Los Angeles, CA 90014
213 426-1761 (direct)
213 426-1760 x1761 (main)
www.designworkshop.com



From: Alex Jackson <Alex.Jackson@me-engineers.com>
Sent: Tuesday, September 28, 2021 11:02 AM
To: Patrick Quigley <pquigley@designworkshop.com>
Cc: Bryan Sculthorpe <b.sculthorpe@saundersinc.com>; Renee Ludlam <rludlam@designworkshop.com>; Stephen Carrola <scarrola@designworkshop.com>; Alec Hallman <A.Hallman@saundersinc.com>; Jacob Apple <Jacob_Apple@gensler.com>; Matt O'Boyle <Matt.Ob Boyle@me-engineers.com>; Paul Benton <Paul.Benton@lumascape.com>; jed@cesteamboat.com; ben@cesteamboat.com
Subject: RE: Electrical & Controls to Art/Brand Wall

Team,

Do we need to meet? If the DMX universe is the only thing that needs to be addressed Patrick and I can catch up offline as it doesn't impact the install but will come into play for programming.

Thanks,

Alex

From: Patrick Quigley <pquigley@designworkshop.com>

Sent: Monday, September 27, 2021 8:43 PM

To: Alex Jackson <Alex.Jackson@me-engineers.com>

Cc: Bryan Sculthorpe <b.sculthorpe@saundersinc.com>; Renee Ludlam <rludlam@designworkshop.com>; Stephen Carrolla <scarrolla@designworkshop.com>; Alec Hallman <A.Hallman@saundersinc.com>; Jacob Apple <Jacob_Apple@gensler.com>; Matt O'Boyle <Matt.Oboyle@me-engineers.com>; Paul Benton <Paul.Benton@lumascape.com>

Subject: RE: Electrical & Controls to Art/Brand Wall

This email originated from outside your organization.

[CAUTION: External]

Alex,

I screwed up Paul's email its: Paul.Benton@lumascape.com

Patrick Quigley, IALD

Lighting Design Principal

DESIGNWORKSHOP

527 W. 7th Street, Suite 508
Los Angeles, CA 90014
213 426-1761 (direct)
213 426-1760 x1761 (main)
www.designworkshop.com



From: Patrick Quigley

Sent: Monday, September 27, 2021 7:36 PM

To: 'Paul Benton' <Paul.Benton@lumascape.com>; Jed Gibson <jed@cesteamboat.com>; ben@cesteamboat.com

Subject: RE: Electrical & Controls to Art/Brand Wall

Thanks Paul!

Patrick Quigley, IALD

Lighting Design Principal

DESIGNWORKSHOP

527 W. 7th Street, Suite 508
Los Angeles, CA 90014
213 426-1761 (direct)
213 426-1760 x1761 (main)
www.designworkshop.com



From: Paul Benton <Paul.Benton@lumascape.com>

Sent: Monday, September 27, 2021 7:34 PM

To: Patrick Quigley <pquigley@designworkshop.com>; Jed Gibson <jed@cesteamboat.com>; ben@cesteamboat.com

Subject: RE: Electrical & Controls to Art/Brand Wall

This is my correct email.

PAUL BENTON LUMASCAPE

Western Regional Sales Manager – North America

c: 320-423-0802 o: (650) 595-5862

USA | Australia | Asia | Middle East | Europe

WWW.LUMASCAPE.COM

Standard product lead-time is 6-8 weeks. Quotes are good for 60 Days.

Please let me know if you have any questions.

For instant access to pricing on our [website](#), follow these links learn how to [create your account](#) and to [configure a product](#).

From: Patrick Quigley <pquigley@designworkshop.com>

Sent: Monday, September 27, 2021 7:30 PM

To: Paul Benton <Paul.Benton@lumascape.com>; Jed Gibson <jed@cesteamboat.com>; ben@cesteamboat.com

Subject: FW: Electrical & Controls to Art/Brand Wall

Jed, Ben – I just caught Bryan's request to add you to this chain – so here you are.

Everyone else I got a Paul Benton's email kicked back to me – so hopefully this is his correct email. If not I will have to research it tomorrow am.

Patrick Quigley, IALD

Lighting Design Principal

DESIGNWORKSHOP

527 W. 7th Street, Suite 508
Los Angeles, CA 90014
213 426-1761 (direct)
213 426-1760 x1761 (main)
www.designworkshop.com



From: Patrick Quigley

Sent: Monday, September 27, 2021 7:17 PM

To: Alex Jackson <Alex.Jackson@me-engineers.com>; Alec Hallman <A.Hallman@saundersinc.com>

Cc: Bryan Sculthorpe <b.sculthorpe@saundersinc.com>; Matt O'Boyle <Matt.Ob Boyle@me-engineers.com>; Stephen Carrola <scarrola@DesignWorkshop.com>; Paul.Benton@lumascapesales.com; Jacob Apple

<Jacob_Apple@gensler.com>; Juan Padilla <Juan_Padilla@gensler.com>; Geoffrey Brooksher

<Geoffrey_Brooksher@gensler.com>; Renee Ludlam <rludlam@DesignWorkshop.com>

Subject: RE: Electrical & Controls to Art/Brand Wall

Hi Alex, hi Alec,

I have spoken with Paul Benton (copied here) who is the Manufacturer's Regional Manager, about your question regarding the addressable length of these fixtures and we came up with 12 segments as being about the right increment. But I would like you to talk directly to him about any questions you have on the control of the fixtures, any interface with the Project control system, or any other electrical questions that you might have. I think direct communication with the factory is the way to go, so that all issues are flushed through in hopefully one go.

Paul is available in the same time slot as myself, 10:30 till 1:00 Mountain (9:30 -12:00 Pacific). If you send a meeting invite some time in that range, he will facilitate us.

Thanks!

Patrick Quigley, IALD

Lighting Design Principal

DESIGNWORKSHOP

527 W. 7th Street, Suite 508
Los Angeles, CA 90014
213 426-1761 (direct)
213 426-1760 x1761 (main)
www.designworkshop.com



From: Alex Jackson <Alex.Jackson@me-engineers.com>

Sent: Monday, September 27, 2021 5:11 PM

To: Alec Hallman <A.Hallman@saundersinc.com>

Cc: Bryan Sculthorpe <b.sculthorpe@saundersinc.com>; Matt O'Boyle <Matt.Ob Boyle@me-engineers.com>; Patrick Quigley <pquigley@designworkshop.com>; Stephen Carrolla <scarrolla@designworkshop.com>; Jacob Apple <Jacob_Apple@gensler.com>; Juan Padilla <Juan_Padilla@gensler.com>; Geoffrey Brooksher <Geoffrey_Brooksher@gensler.com>; Renee Ludlam <rludlam@designworkshop.com>

Subject: Electrical & Controls to Art/Brand Wall

Alec,

We've had some internal dialog this morning and Friday on the subject scope. Please see below for overall thoughts and routing to the lights internal to these wall elements.

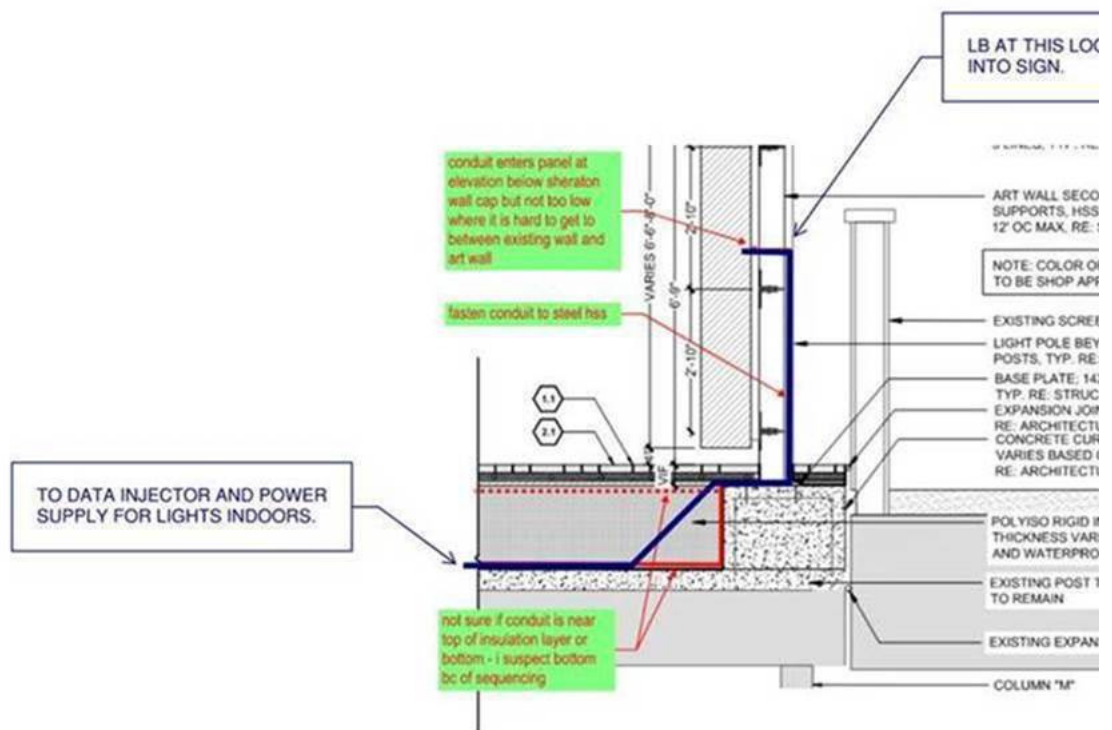
- **Power Supply & Data Injector**

- The intent will be to locate the drivers and the Data injector indoors. The data injector will need to be mounted within a NEMA 3R box if it is located in a damp or wet location (i.e the garage). The power supply already looks to be IP66 rated.

- The cut sheet provided by DW (also attached) has the wire length limitations called out and fixture power requirements per driver. The intent is to maximize power supplied to minimize penetrations into the sign and through the slab below.

• Conduit Routing

- The spec'd fixture from DW has a power and DMX combination feed rather than splitting this apart for two separate feeds. This will allow for a single penetration per power supply/data injector into the sign.
- We will need to feed both the Art wall and the Brand wall from below and at the rear of the sign as the egress stair cannot have foreign systems routed through it (Brand Wall).
- Please see preferred conduit routing from below into the Art Wall (**BLUE** Line below). If this exact routing cannot be accommodated, the electrical feed from below will need to be on the back side of the sign as the bottom of the signage elements is removable to access the light fixtures.



- Intent is to have fixtures daisy chain from panel to panel within the limitation of the power supply as outlined by the remote distance of the supply.

• Lighting Control

- These lights will be tied into the lighting control system with DMX control. They will need to be accessible from the web interface or touch panel provided in the lighting control system.

- DW please confirm what size addressable length within each fixture is required. Looks like the fixture can go down to 3/4" segments as separate channels. This will be needed to verify DMX Universe(s) with each having a maximum of 512 addresses (i.e. if we have 3/4" addressability, we will need 12 Universes whereas w/ 6" addressability we only need 2).

I know time is of the essence on this one, which is why I send this ahead of issuing a Bulletin.

Please call tomorrow if needed to coordinate any questions.

A bulletin that includes this scope will be following later in the week.

Thanks,

Alex

Alex Jackson PE
Associate | Electrical

office: +1.303.421.6655 direct: 303.467.7478
mobile: 303.842.1275

Alex.Jackson@me-engineers.com

14143 Denver West Pkwy, Suite 300 Golden CO 80401



Confidentiality note: The above email and any attachments contain information that may be confidential and/or privileged. The information is for the use of the individual or entity originally intended. If you are not the intended recipient, any disclosure, copying, distribution or use of this information is prohibited. If this transmission is received in error, please immediately notify the sender and delete this message and its attachments, if any.

CAUTION: This email originated from outside of the organization. Do not click links or open attachments unless you recognize the sender and know the content is safe. If unsure, contact the Service Desk before proceeding.

Confidentiality note: The above email and any attachments contain information that may be confidential and/or privileged. The information is for the use of the individual or entity originally intended. If you are not the intended

recipient, any disclosure, copying, distribution or use of this information is prohibited. If this transmission is received in error, please immediately notify the sender and delete this message and its attachments, if any.

Confidentiality note: The above email and any attachments contain information that may be confidential and/or privileged. The information is for the use of the individual or entity originally intended. If you are not the intended recipient, any disclosure, copying, distribution or use of this information is prohibited. If this transmission is received in error, please immediately notify the sender and delete this message and its attachments, if any.

Confidentiality note: The above email and any attachments contain information that may be confidential and/or privileged. The information is for the use of the individual or entity originally intended. If you are not the intended recipient, any disclosure, copying, distribution or use of this information is prohibited. If this transmission is received in error, please immediately notify the sender and delete this message and its attachments, if any.

--

Ben Campbell

Superintendent

Central Electric, LLC

2659 Jacob Circle #4

Steamboat Springs, CO 80487

ben@cesteamboat.com

office: 970-871-9611

Mobile: [303-949-7599](tel:303-949-7599)

Confidentiality note: The above email and any attachments contain information that may be confidential and/or privileged. The information is for the use of the individual or entity originally intended. If you are not the intended recipient, any disclosure, copying, distribution or use of this information is prohibited. If this transmission is received in error, please immediately notify the sender and delete this message and its attachments, if any.

--

Ben Campbell
Superintendent

Central Electric, LLC

2659 Jacob Circle #4

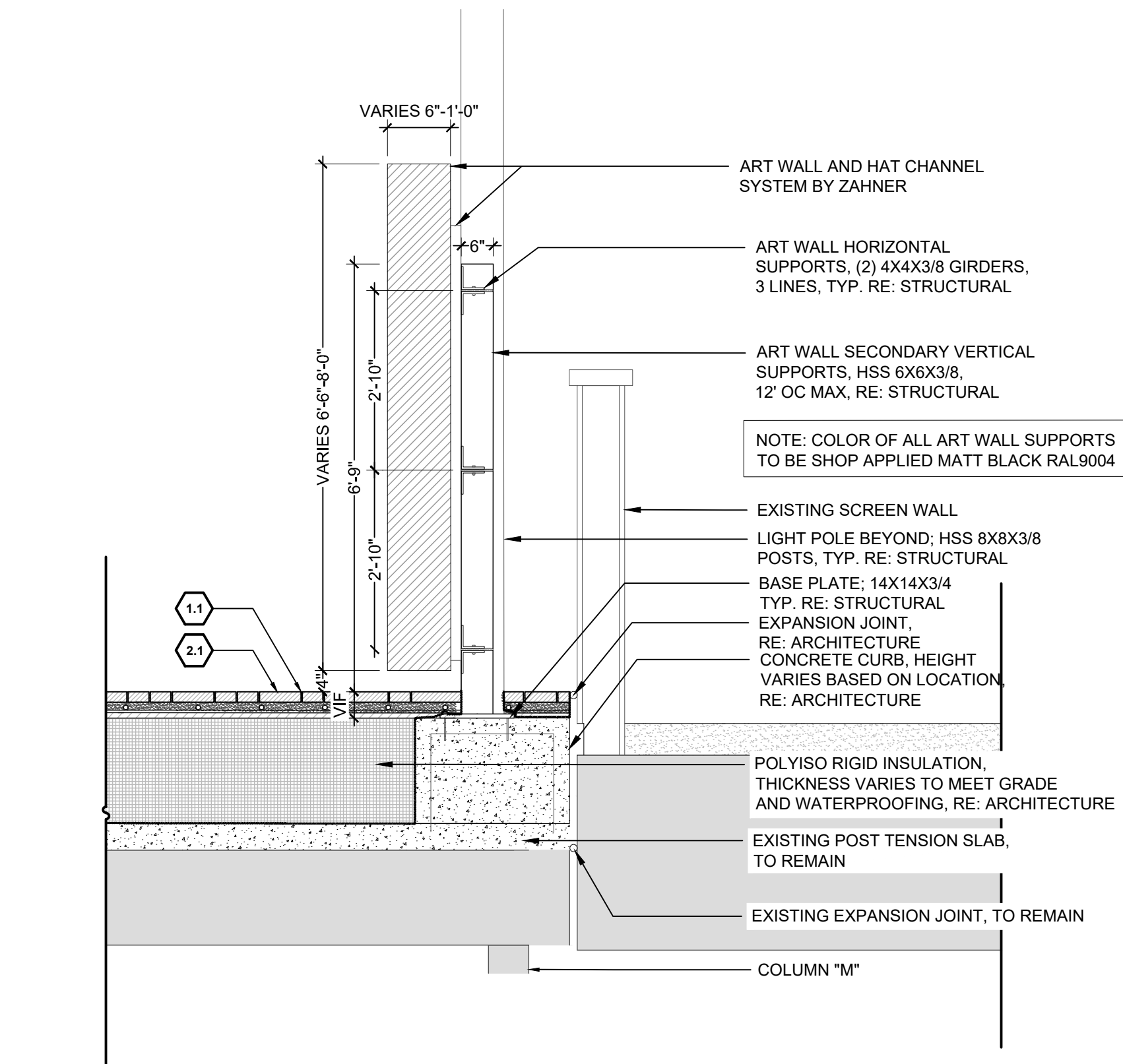
Steamboat Springs, CO 80487

ben@cesteamboat.com

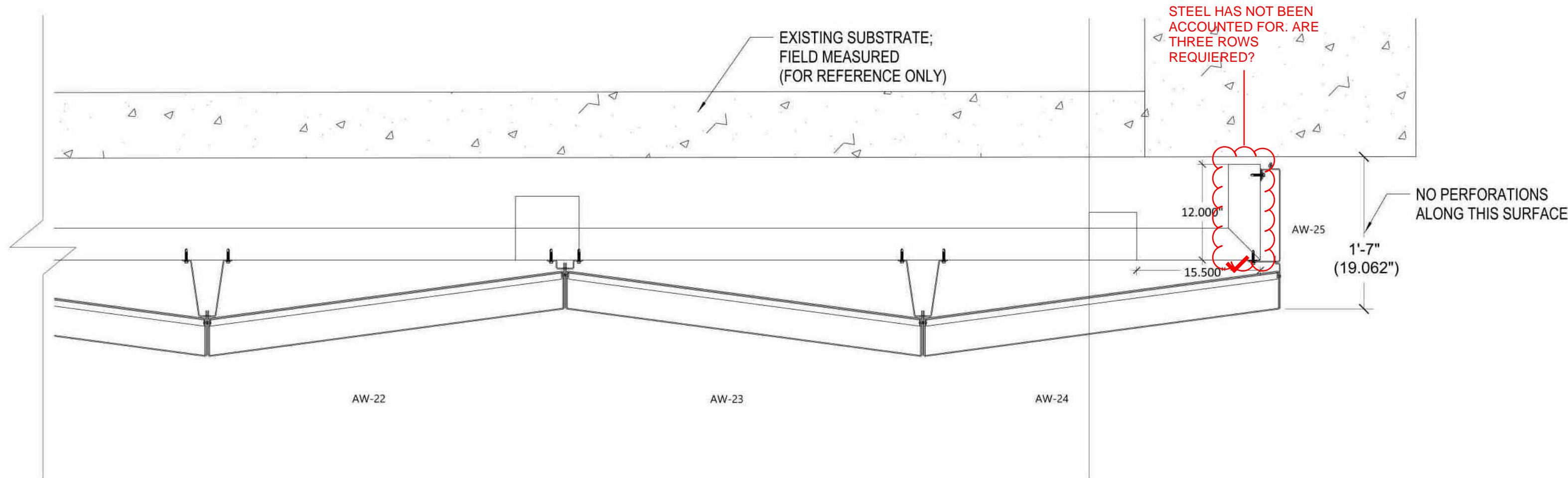
office: 970-871-9611

Mobile: [303-949-7599](tel:303-949-7599)

NOTE: SCI TO VERIFY FIELD SUB-SURFACE DIMENSIONS FOR TOTAL STEEL LENGTHS AND ALL MATERIAL REQUIREMENTS PRIOR TO PROCURING STEEL



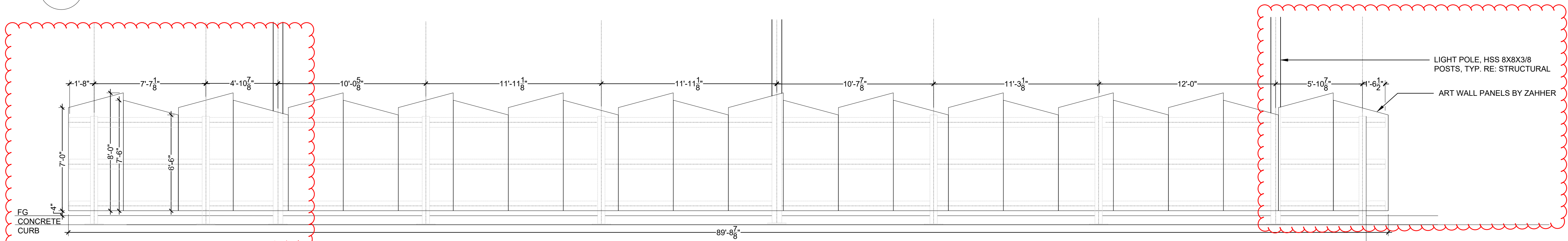
1 ART WALL SECTION
1/2"=1'-0"



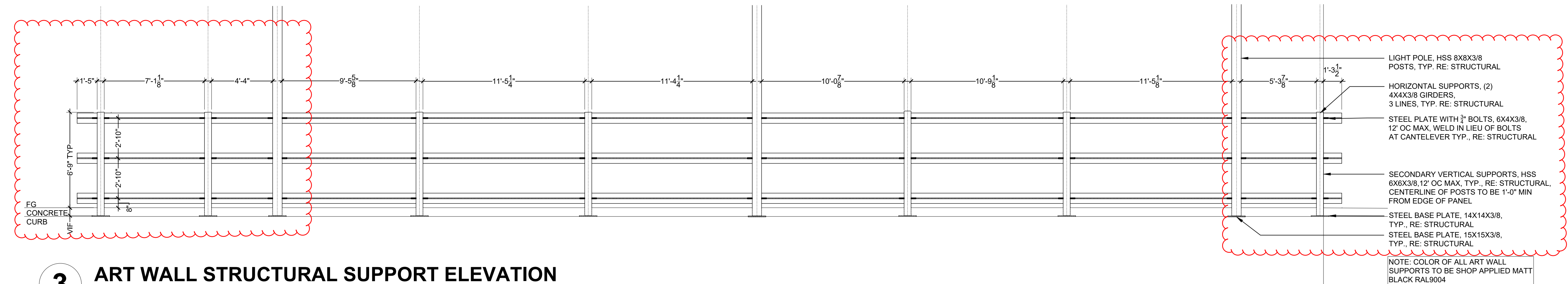
2/Z50.1: ART WALL DETAIL - EAST ✓

ABE, PLEASE SEE ZAHNER SHOP DRAWING TO LEFT. THIS IS THE EAST END OF THE ART WALL. WE WILL NEED TO PROVIDE GIRTERS FOR THIS END CAP. ANY CONCERNS?

No concern.
(CAC, M/M)

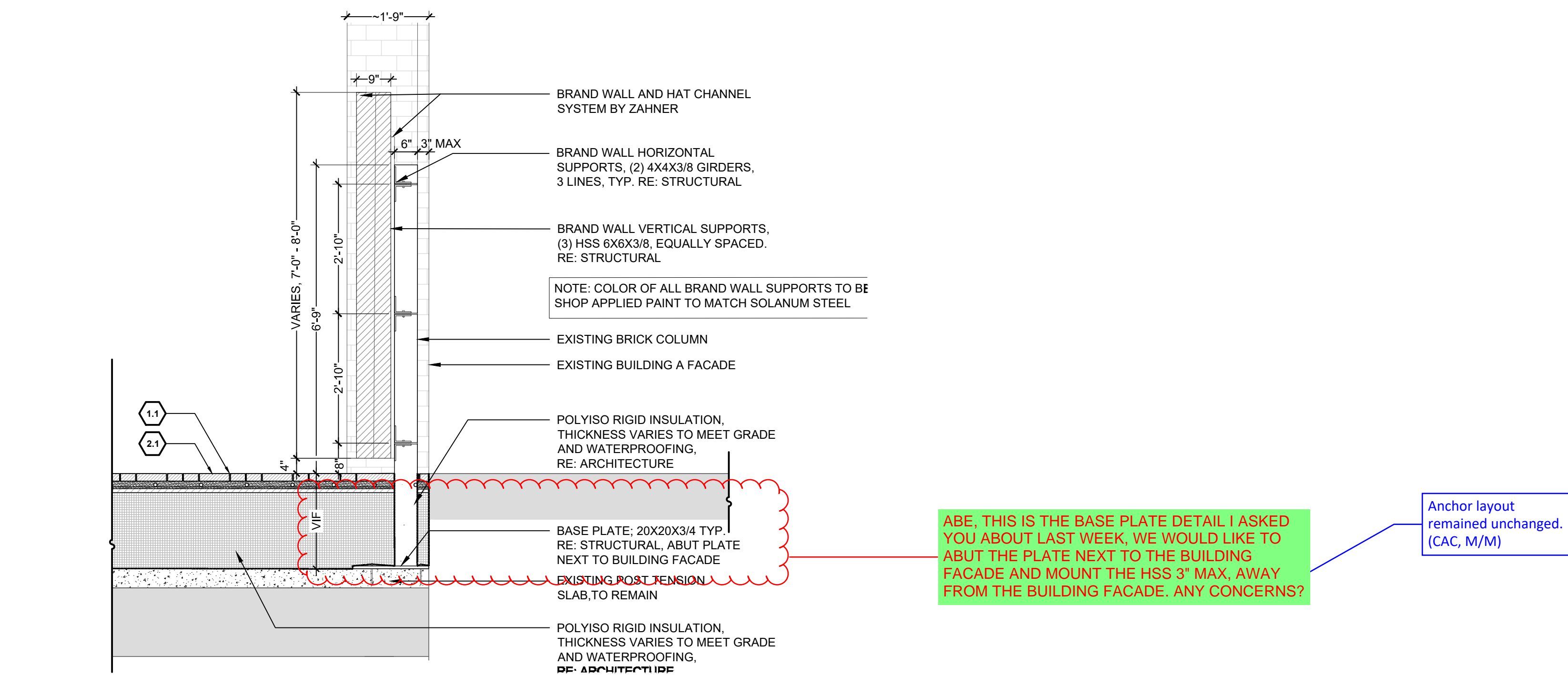


2 ART WALL ELEVATION
1/4"=1'-0"

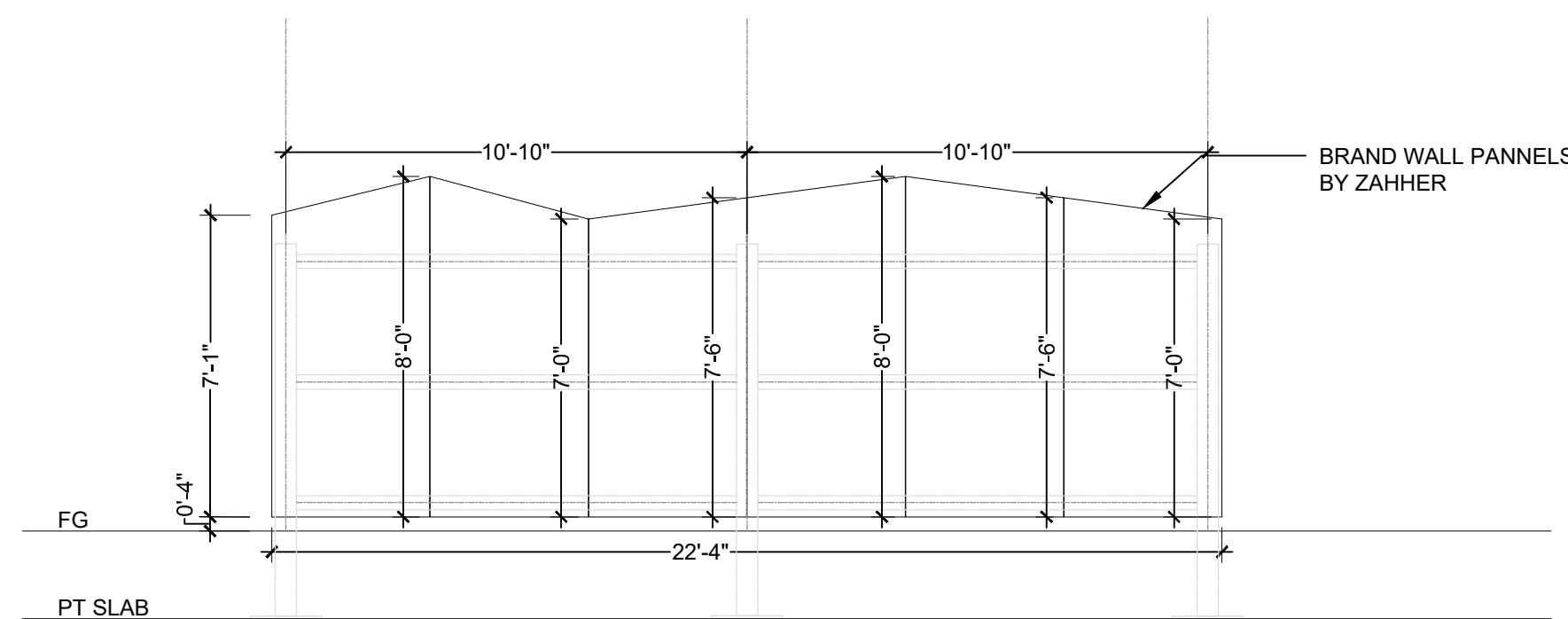


3 ART WALL STRUCTURAL SUPPORT ELEVATION
1/4"=1'-0"

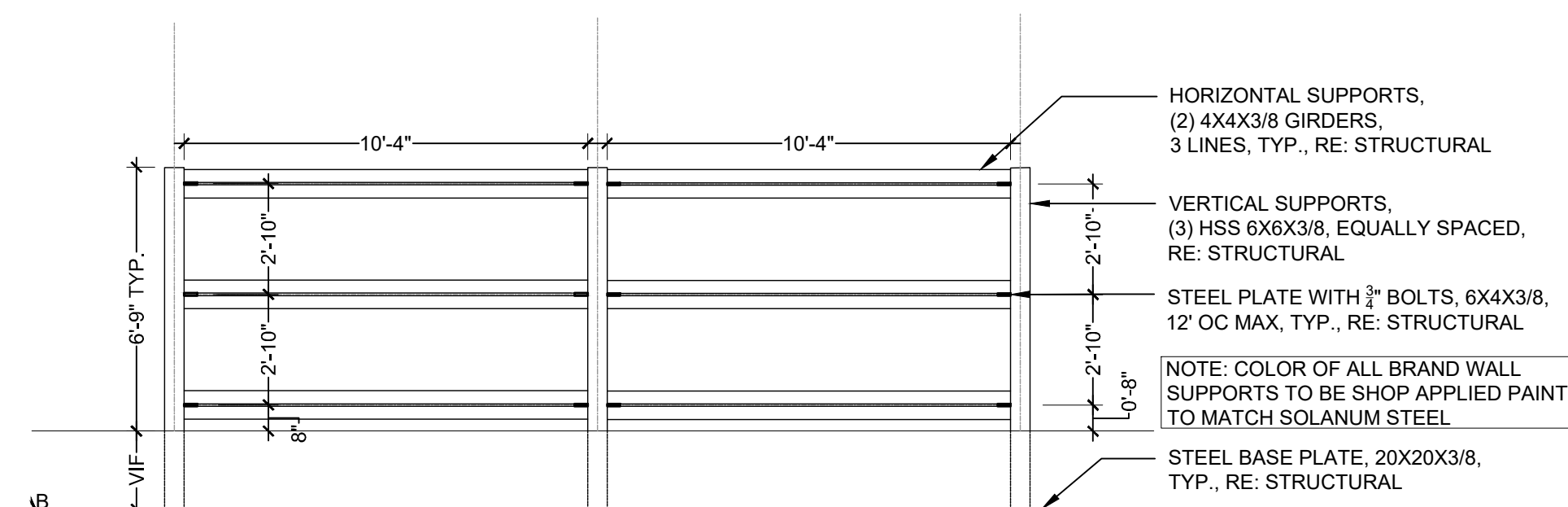
NOTE: SCI TO VERIFY FIELD SUB-SURFACE DIMENSIONS
FOR TOTAL STEEL LENGTHS AND ALL MATERIAL
REQUIREMENTS PRIOR TO PROCURING STEEL



1 BRAND WALL SECTION



2 BRAND WALL ELEVATION



3 BRAND WALL STRUCTURAL SUPPORT ELEVATION