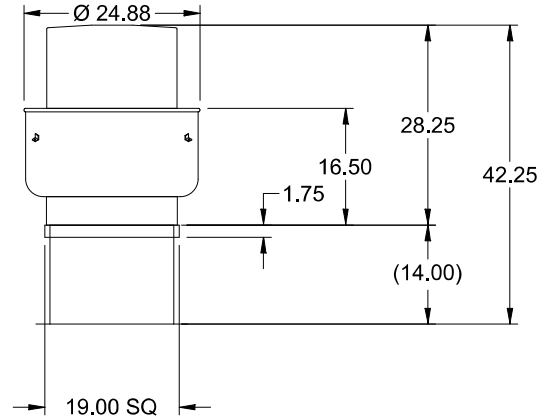


Model: CUBE-121-3

Belt Drive Upblast Centrifugal Roof Exhaust Fan



OVERALL HEIGHT MAY BE GREATER DEPENDING ON MOTOR.

Dimensional

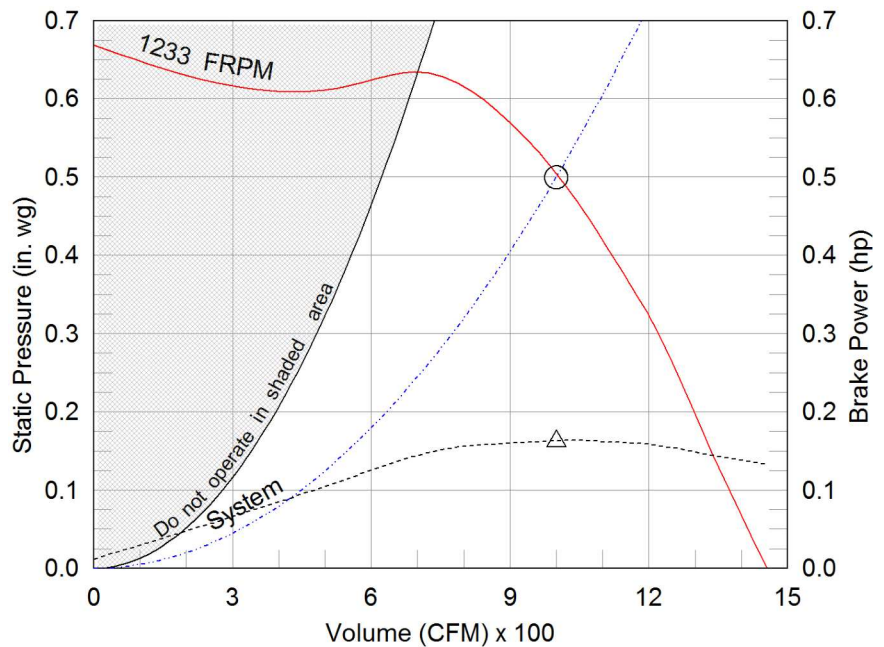
Quantity	1
Weight w/o Acc's (lb)	57
Weight w/ Acc's (lb)	81
Max T Motor Frame Size	56
Optional Damper (in.)	12 x 12
Roof Opening (in.)	14.5 x 14.5

Performance

Requested Volume (CFM)	1,000
Actual Volume (CFM)	1,000
Total External SP (in. wg)	0.5
Fan RPM	1233
Operating Power (hp)	0.16
Elevation (ft)	6,800
Airstream Temp.(F)	70
Air Density (lb/ft3)	0.058
Drive Loss (%)	16.4
Tip Speed (ft/min)	4,217
Static Eff. (%)	58

Motor

Motor Mounted	Yes
Size (hp)	1/3
Voltage/Cycle/Phase	115/60/1
Enclosure	ODP
Motor RPM	1725
Windings	1
NEC FLA* (Amps)	7.2



- △ Operating Bhp point
- Operating point at Total External SP
- Fan curve
- - - System curve
- - - Brake horsepower curve

Sound Power by Octave Band

Sound Data	62.5	125	250	500	1000	2000	4000	8000	LwA	dBA	Sones
Inlet	73	74	76	64	60	62	52	44	70	59	9.5

Notes:

All dimensions shown are in units of in.
*NEC FLA - based on tables 430.248 or 430.250 of National Electrical Code 2014. Actual motor FLA may vary, for sizing thermal overload, consult factory.
LwA - A weighted sound power level, based on ANSI S1.4
dBA - A weighted sound pressure level, based on 11.5 dB attenuation per Octave band at 5 ft - dBA levels are not licensed by AMCA International
Sones - calculated using AMCA 301 at 5 ft



Model: CUBE-121-3

Belt Drive Upblast Centrifugal Roof Exhaust Fan

Standard Construction Features:

- Aluminum housing - Backward inclined aluminum wheel - Curb cap with prepunched mounting holes - Motor and drives isolated on shock mounts - Drain trough - Ball bearing motors - Adjustable motor pulley - Adjustable motor plate - Fan shaft mounted in ball bearing pillow blocks - Bearings meet or exceed temperature rating of fan - Static resistant belts - Corrosion resistant fasteners - Internal lifting lugs

Selected Options & Accessories:

Spare Belt(s) - 1 Set (Attached)
UL/cUL 705 Listed - "Power Ventilators"
Switch, NEMA-1, Toggle, Shipped with Unit
Junction Box Mounted & Wired
Roof Curb-Galv., GPI-19-12-G14, Under Sized 1.5 in. Total, Tray, 1 in. Insulation
Damper Shipped Loose, BD-100-PB-12X12, Gravity Operated, Not Coated
Tie Down Points - Set of 4 (Attached)
Unit Warranty: 1 Yr (Standard)

Disconnect Switch

Enclosure Rating: NEMA-1

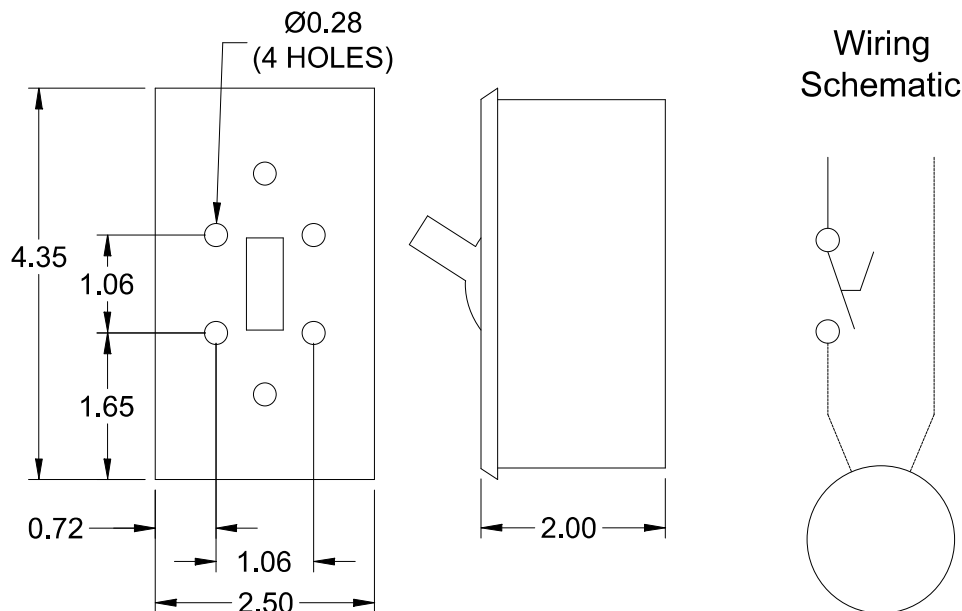
Standard Construction Features:

Enclosure constructed for indoor use to provide a degree of protection to personnel against incidental contact with the enclosed equipment and to provide a degree of protection against falling dust. This enclosure meets the rod entry and the indoor corrosion protection design tests. The rod entry test is intended to simulate incidental contact with enclosure equipment. Enclosure is equipped with provision to lockout in the off position with customer supplied lock.

Disconnect Switch Configuration

Type:	Toggle	Motor Size:	1/3 hp	Voltage:	115	UL Listed:	Yes
Manufacturer:	Pass and Seymour	Cycle:	60	Amperage:	15	CSA Approved:	Yes
Overload Protection:	None	Phase:	1	Switch Pole(s):	1	Rating:	1/2 hp
Junction Box Mtg.:	Mounted and Wired	RPM:	1725	Exp. Resist. Wiring:	None		
Switch Mounting:	Shipped With Unit						

Electrical Drawing Details

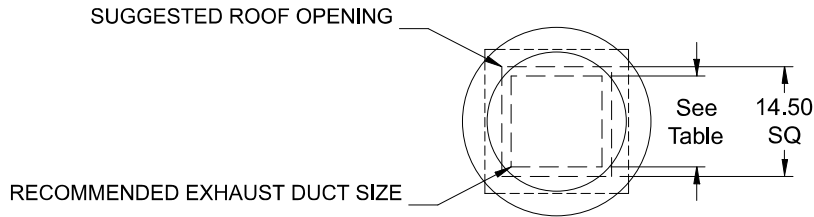


Notes: All dimensions shown are in units of in.

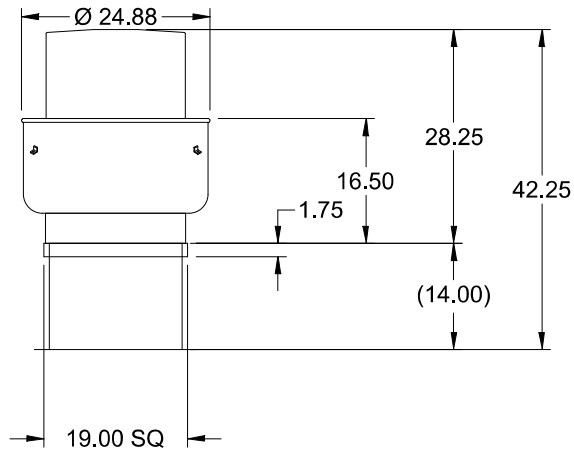
Generated by: pamm@cfmcompany.com

Assembly Drawing

Type: Belt Drive Upblast Centrifugal Roof Exhaust Fan



DUCT TYPE	SIZE
STANDARD	12 SQ
FIRE-WRAPPED	4 SQ



DUCT DIMENSIONS ARE LARGEST POSSIBLE DUCT TO FIT THROUGH CURB.
CONSULT SYSTEM DESIGN ENGINEER FOR RECOMMENDED DUCT SIZE.

OVERALL HEIGHT MAY BE GREATER DEPENDING ON MOTOR.

Notes: All dimensions shown are in units of in..

Horizontal Mount Exhaust Damper

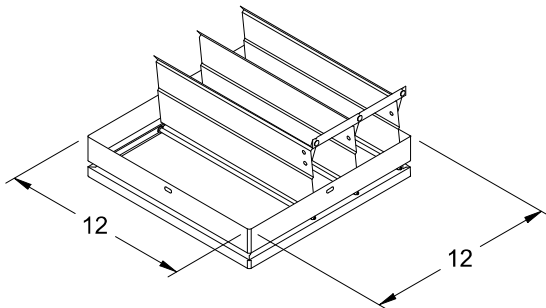
Model: BD-100

Standard Construction Features:

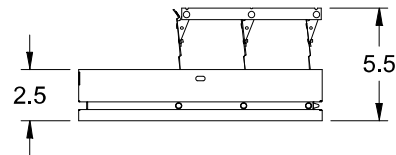
- Model BD-100 is a horizontal mount exhaust damper (air flow up) and is constructed of 24 ga galvanized steel with pre-punched mounting holes
- Damper blades are 0.016 in. roll formed aluminum with vinyl seals on the closing edge, and spring assisted for ease of opening
- Axle/bearing is constructed of fiberglass reinforced nylon



Greenheck Fan Corporation certifies that the models BD-100 shown herein is licensed to bear the AMCA Seal. The ratings shown are based on tests and procedures performed in accordance with AMCA Publication 511 and comply with the requirements of the AMCA Certified Ratings Program. The AMCA Certified Ratings Seal applies to Air Leakage and Air Performance Ratings.



DAMPER



TYP. SECTION VIEW

Notes: All dimensions shown are in units of in.

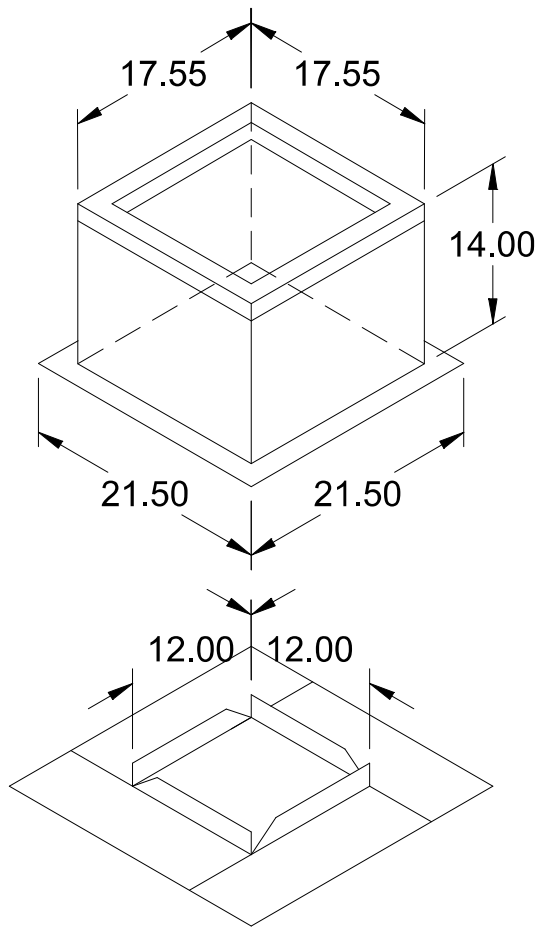
Roof Curb

Model: GPI

Material: Galvanized

Standard Construction Features:

- Roof Curb fits between the building roof and the fan mounted directly to the roof support structure - Constructed of either 18 ga galvanized steel or 0.064 in. aluminum - Straight Sided without a cant - 2 in. mounting flange - 3 lb density insulation - Height - Available from 12 in. to 42 in. as specified in 0.5 in. increments. Notes: - The maximum roof opening dimension should not be greater than the "Actual" top outside dimension minus 2 in.. - The minimum roof opening dimension should be at least 2.5 in. more than the damper dimension or recommended duct size. - The Roof Opening Dimension may or may not be the same as the Structural Opening Dimension. - Damper Tray is optional and must be specified. Tray size is same as damper size. - Security bars are optional and must be specified. Frames and gridwork are all 12 ga steel. Gridwork is welded to the frame and the frame is welded to the curb.



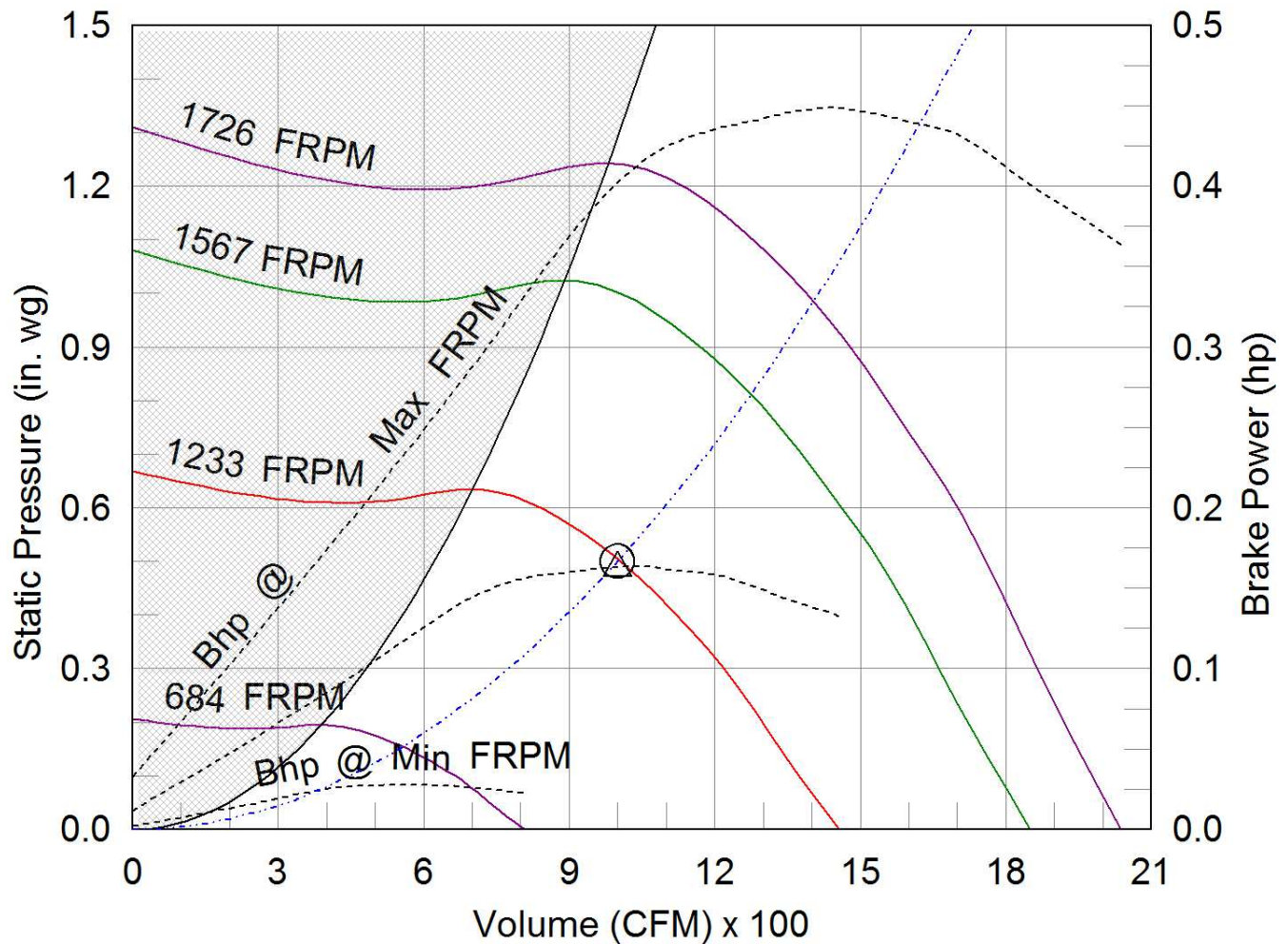
Notes: All dimensions shown are in units of in.

CUBE-121-3

Min/Max Fan Curve

Performance

Requested Volume (CFM)	Actual Volume (CFM)	Total External SP (in. wg)	Fan RPM	Operating Power (hp)
1,000	1,000	0.5	1233	0.16



- △ Operating Bhp point
- Operating point at Total External SP
- Fan curve
- System curve
- Brake horsepower curve

Warranty

1 Yr (Standard)

WARRANTY AND LIABILITY: SELLER warrants to Buyer that products manufactured are free from defects in material and workmanship for a period of 1 Yr (Standard) from the date of shipment. SELLER's obligations and liabilities under this warranty are limited to furnishing FOB factory or warehouse at SELLER's designated shipping point, freight allowed to Buyer's city, (or point of export for shipments outside the conterminous United States) replacement equipment (or at the option of SELLER parts therefore) for all Seller's products not conforming to this warranty and which have been returned to the manufacturer. No liability whatever shall attach to SELLER until said products have been paid for and such liability shall be strictly limited to the purchase price of the equipment shown to be defective. Motors are warranted by the motor manufacturer for a period of one year. Should motors furnished by SELLER prove defective during this period, they should be returned to the nearest authorized motor service station. SELLER will not be responsible for any removal or installation costs. Electrical components, excluding motors, are warranted only to the extent warranted by the original manufacturer. To the extent that SELLER is entitled to pass through a warranty of the original equipment manufacturer of the electrical goods sold, SELLER will pass through such warranties to Buyer. The legal remedies described in this Warranty are the sole exclusive remedy of Buyer. SELLER MAKES NO OTHER WARRANTY, EITHER EXPRESS OR IMPLIED, REGARDING ITS PRODUCTS, OR ITS SELECTION AND APPLICATION, INCLUDING, BUT NOT LIMITED TO, COMPLIANCE WITH BUILDING CODES, SAFETY CODES, LAWS, MERCHANTABILITY OR FITNESS OR A PARTICULAR PURPOSE. This warranty is extended solely to the Buyer. It is nontransferable and non-assignable, and the Buyer shall not permit or authorize its employees, agents, representatives or customers to claim, represent or imply that this limited warranty extends or is available to anyone other than the Buyer. ANY MISUSE, NEGLIGENCE, FAILURE TO FOLLOW INSTRUCTIONS OR MANUALS OF INSTALLATION OF MAINTENANCE REPAIR, SERVICE, RELOCATION OR ALTERATION TO OR OF, OR OTHER TAMPERING WITH, THE PRODUCTS PERFORMED BY ANY PERSON OR ENTITY OTHER THAN SELLER WITHOUT SELLER'S PRIOR WRITTEN APPROVAL OR ANY USE OF REPLACEMENT PARTS NOT SUPPLIED BY SELLER, SHALL IMMEDIATELY VOID AND CANCEL ALL WARRANTIES WITH RESPECT TO THE AFFECTED PRODUCTS. THE WARRANTY AND LIABILITY SET FORTH HEREIN ARE IN LIEU OF ALL OTHER WARRANTIES AND LIABILITIES WHETHER IN CONTRACT OR IN NEGLIGENCE, EXPRESSED OR IMPLIED, IN LAW OR IN FACT, INCLUDING IMPLIED WARRANTIES OF MERCHANTABILITY AND FITNESS FOR A PARTICULAR USE. SELLER PROVIDES NO INDEPENDENT WARRANTY FOR THIRD PARTY PRODUCTS OR COMPONENTS SOLD TOGETHER OR INCORPORATED WITH SELLER'S PRODUCT(S). THE SELLER HAS THE RIGHT TO SETTLE ANY AND ALL DISPUTES REGARDING THE WARRANTY.