

ItemNo	Quantity	Category	Voltage	Phase	Amps	Cycle	Hp	Kw	onnectionTyp	NEMA	Cold Water (in)	Hot Water (in)	Indirect Waste Size	Direct Waste Size	Gas Size(in)	Gas MBTU	Equipment Remarks
2	2	Bussing Utility Transport Cart, Metal															
3	6	Cabinet, Enclosed, Bun / Food Pan															
4	1	Mop Sink									1/2"	1/2"		2"			
4.1	1	Hose Reel									3/8"	3/8"					
5	1	Combi Oven, Gas	208/240	1		60		.9					2"			106.5	
6/6.1	1	Exahust Hood															
7	1	Kettle, Gas, Tilting	120	1	1	60									1/2"	63.2	
8	1	Convection Oven, Gas	120	1		60	1/2								3/4"	100	
9	1	Gas Floor Fryer													3/4"	90.0	
9.1	1	Fryer Dump Station															
10	1	Griddle, Gas, Countertop													3/4"	80.0	
11		Spare Number															
12	1	Range, 36", 6 Open Burners													3/4"	215.0	
13	1	Ice Maker, Cube-Style	208-230	1	12.5	60							3/8"				
	1										1/2"		3/4"				
14	1	Reach-In Refrigerator	115	1	2.1	60	1/5		Cord & Plug	5-15P							
15	1	Reach-In Refrigerator	115	1	6.0	60	1/3		Cord & Plug	5-15P							
16	2	Hand Sink									1/2"	1/2"		1-1/2"			
17	1	Food Processing Machine															
18	2	Work Table, with Prep Sink(s)									1/2"	1/2"		1-1/2"			
20	1	Three (3) Compartment Sink									1/2"	1/2"		1-1/2"			
20.1	1	Pre-Rinse Faucet Assembly, with Add On Faucet									1/2"	1/2"					
21	1	Dishwasher, Conveyor Type	208	3	55	60						(2) 1/2"	2"				
21.1	1	Pre-Rinse Faucet Assembly									1/2"	1/2"					
21.2	1	Services: Custom Fabrication															
21.3	2	Overshelf															
22	1	Pre-Rinse Faucet Assembly															
23		Spare Number															
24/24.1	1	Walk In Combination Cooler Freezer	120	1	20												
25	2	Soda Ice & Beverage Dispenser	115	1	3.5	60											
25.2/25.5	1	Services: Custom Fabrication															
25.3/25.4	1	Services: Custom Fabrication															
26	1	Coffee Brewer	120/240	1	17	60		4									
27	2	Beverage Dispenser, Electric (Hot)	120	1	15	60		1.8	Cord & Plug	5-15P	1/4"						
28	2	Drop-In Sink												1-1/2"			
29	1	Mobile Heated Cabinet	120	1		60											
29.1	2	Heated Holding Proofing Cabinet, 1	120	1	17.5	60		2.1		5-20P							
30	58	Wire Shelving															
31	3	Ingredient Bin															
32	22	Wire Shelving															
33	1	Can Rack															
34	1	Dunnage Rack															
35	1	Services: Custom Fabrication															
36		Spare Number															
37	5	POT & PAN STORAGE SHELIVING															
37.1	1	Clean Dishtable															
38	2	SERVICE /SUPPORT TABLES									1/2"	1/2"					
39		Spare Number															
40	1	Disposer	208	1	10.2	60	1		Direct		1/2"			2"			
41	1	Shelving, Wall Mounted															
42	1	Shelving, Wall Mounted															
43-45		Spare Number															
46		Prep Table															
47		Syrup - Co2															
48		Shelving															
49	1	Food Slicer, Electric	115	1	3.0	60	1/2		Cord & Plug	5-15P							
50		Spare Number															

4900 Osage Street, Suite 400
Denver, CO 80221
P 855.331.6100

trimarkusa.com

This document contains
confidential information, is an
instrument of a professional
service, and the property of
Trimark. It shall not be used on
other projects or for the extension
of this project without Trimark's
written approval.

Owner and all Contractors to
check and verify existing
dimensions and conditions in
the field before starting
construction and to notify
Trimark of any material or detail
changes.

REVISIONS

DATE	NO.	DESCRIPTION

SBV - KVC KITCHEN

2305 Mt. Werber Circle
Steamboat Springs, Co.
80487

PROJECT NUMBER:
2021-0423

DATE:
2021.06.04

SCALE:

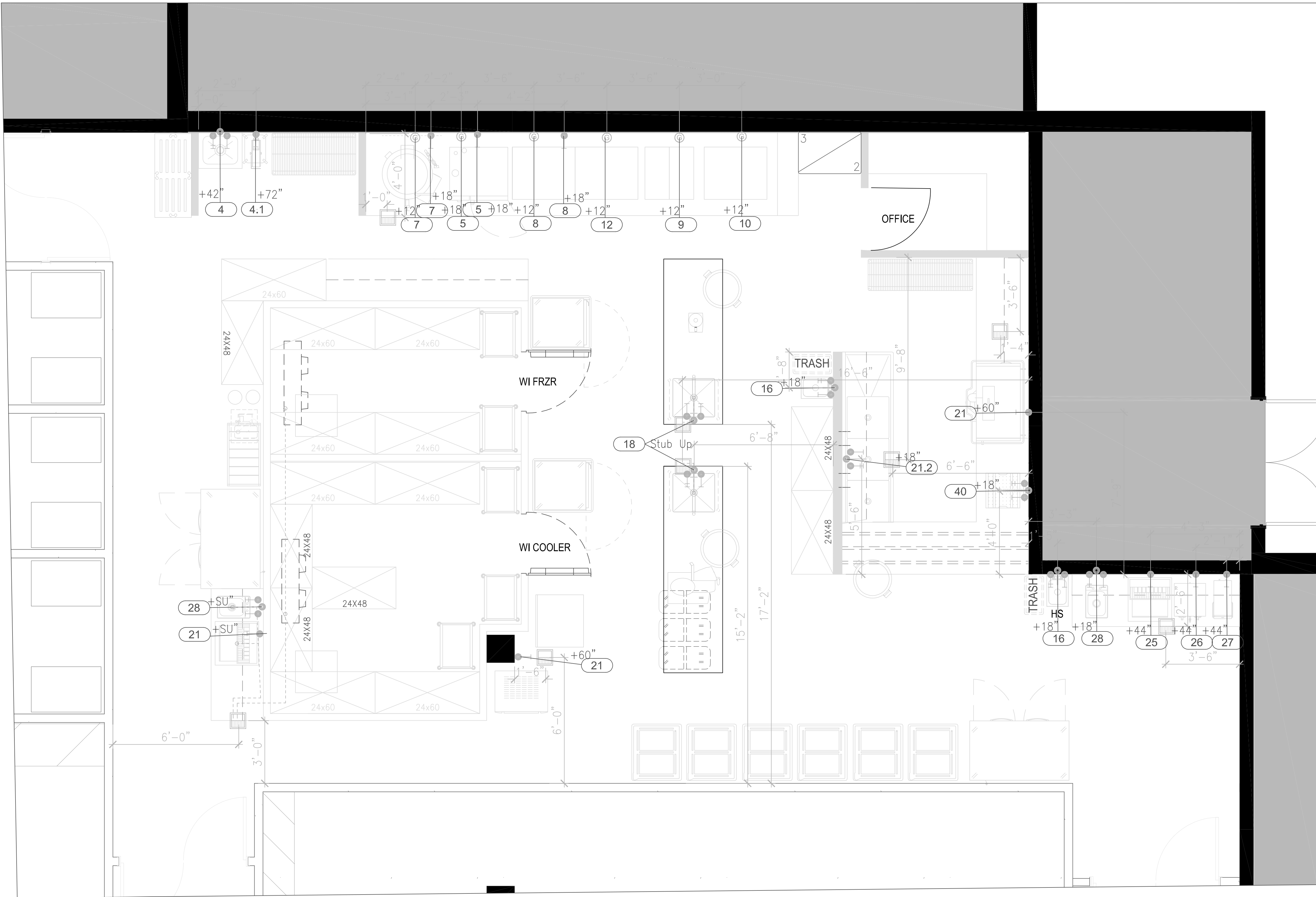
DRAWN BY:
SDS

APPROVED BY:
-

SHEET TITLE:
EQUIPMENT
SCHEDULE

SHEET NUMBER:
FS-2.0

THIS DOCUMENT WAS ORIGINALLY PRINTED ON A 24" x 36" SIZE SHEET



- PLUMBING NOTES**
- THESE DRAWINGS ARE TO BE USED AS AN INSTRUMENT OF REFERENCE BY ALL OTHER TRADES AND CONTRACTORS. ALL TRADES SHALL VERIFY THE INFORMATION AS INDICATED ON THESE PLANS.
 - DIMENSIONS AND REQUIREMENTS FOR ALL EQUIPMENT THAT IS LISTED AS EXISTING, PROVIDED BY OTHERS OR PROVIDED BY OWNER, MUST BE VERIFIED WITH THE APPROPRIATE PARTIES.
 - ALL LOCAL, STATE AND NATIONAL CODES SHALL APPLY.
 - THESE UTILITY REQUIREMENT DRAWINGS INDICATE THE UTILITY AND LOCATION OF REQUIREMENTS BASED ON THE EQUIPMENT SPECIFIED.
 - ALL EQUIPMENT SHALL BE PLUMBED IN STRICT CONFORMANCE WITH THE MANUFACTURER'S INSTRUCTIONS AND/OR SHOP DRAWINGS.
 - UNLESS OTHERWISE NOTED, ALL DIMENSIONS SHOWN ON THIS PLAN ARE FROM THE FINISHED FLOOR, CEILING, WALLS OR COLUMN CENTERLINES TO THE CENTERLINE OF THE ROUGH-INS.
 - ALL PLUMBING CONNECTIONS SHALL BE EXTENDED AND INTERCONNECTED TO CONNECTION POINTS ON THE EQUIPMENT BY OTHERS. UNLESS SPECIFIED, ALL HARDWARE REQUIRED FOR THESE CONNECTIONS SHALL BE SUPPLIED BY THE PLUMBING CONTRACTOR.
 - SURFACE MOUNTED PIPING WILL NOT BE ALLOWED. ALL PIPING SHALL BE EXTENDED THROUGH AND OUT OF BUILDING WALLS WHERE POSSIBLE. WHERE SURFACE MOUNTED PLUMBING IS UNAVOIDABLE, IT MUST BE COORDINATED WITH HOCKENBERGS.
 - ROUGH-INS OUT OF FLOOR SHOULD BE STUBBED UP 4" ABOVE FINISHED FLOOR AND BROUGHT TO THE REQUIRED HEIGHT AFTER EQUIPMENT IS SET IN PLACE.
 - ONLY COMPONENTS SUPPLIED STANDARD BY THE MANUFACTURER ARE INCLUDED. ALL HARDWARE REQUIRED FOR CONNECTIONS SHALL BE SUPPLIED BY THE PLUMBING CONTRACTOR. SUCH COMPONENTS INCLUDE BUT ARE NOT LIMITED TO, SHUT-OFFS, PRESSURE REGULATORS, VACUUM BREAKERS, P-TRAPS, BACKFLOW PREVENTERS, ETC.
 - PLUMBING CONTRACTOR TO VERIFY THAT ALL APPLIANCES ARE SUPPLIED WITH APPROPRIATE GAS PRESSURE AND THAT ANY VARIANCES IN GAS PRESSURE BE CLEARLY IDENTIFIED AND BROUGHT TO THE IMMEDIATE ATTENTION OF HOCKENBERGS.
 - ALL INDIRECT WASTE AND CONDENSATE DRAIN LINES SHALL BE EXTENDED FROM EQUIPMENT FITTINGS TO APPROPRIATE DRAINS AS CODES REQUIRE, BY OTHERS.
 - UNLESS OTHERWISE SPECIFIED, HOT WATER SUPPLIED TO BOOSTER HEATER SHALL BE A MINIMUM TEMPERATURE OF 140° F.
 - PLUMBING CONTRACTOR TO VERIFY WATER TEMPERATURE REQUIREMENTS FOR EACH PIECE OF EQUIPMENT. ANY DISCREPANCY BETWEEN MANUFACTURER'S REQUIREMENTS AND TEMPERATURES PROVIDED SHALL BE CLEARLY IDENTIFIED AND BROUGHT TO THE IMMEDIATE ATTENTION OF HOCKENBERGS.
 - PLUMBING CONTRACTOR TO PROVIDE INSULATED HOT WATER CONNECTIONS BETWEEN BOOSTER HEATER AND DISHWASHER.
 - UNLESS OTHERWISE SPECIFIED BY CODE, ALL DRAIN LINES FOR DISPOSERS SHALL BY-PASS GREASE INTERCEPTORS.
 - NO GENERAL PURPOSE FLOOR DRAINS ARE SHOWN ON THESE PLANS. THE SPECIFICATION OF THOSE DRAINS, AS WELL AS THE DESIGN FOR REQUIRED SLOPES IN THE FLOOR TO THOSE DRAINS, SHALL BE THE RESPONSIBILITY OF THE ARCHITECT AND/OR ENGINEERS.

PLUMBING SYMBOLS	
ITEM NUMBER	PLUMBING ROUGH-IN NOTE (SEE SCHEDULE)
1	COLD WATER CONNECTION
A	HOT WATER CONNECTION
2	HOT WATER CONNECTION - 140° MINIMUM
3	FLOOR SINK
4	FLOOR SINK-HALF COVER
5	FLOOR DRAIN
6	FUNNEL FLOOR DRAIN
7	FILTERED COLD WATER
8	INDIRECT DRAIN
9	DIRECT DRAIN
10	GAS

PLUMBING SYMBOLS	
000	FOOD SERVICE EQUIPMENT
A	FOOD SERVICE EQUIPMENT
000	FOOD SERVICE EQUIPMENT
A	FOOD SERVICE EQUIPMENT
000	FOOD SERVICE EQUIPMENT
A	FOOD SERVICE EQUIPMENT
000	FOOD SERVICE EQUIPMENT
A	FOOD SERVICE EQUIPMENT
000	FOOD SERVICE EQUIPMENT
A	FOOD SERVICE EQUIPMENT

REMOTE COMPRESSORS & CONDENSING UNITS

THESE NOTES APPLY TO MULTI-SYSTEM COMPRESSOR RACKS AS WELL AS INDIVIDUAL COMPRESSORS AND CONDENSORS.

SUFFICIENT AIR CHANGES MUST BE PROVIDED IN THIS AREA TO ALLOW ADEQUATE AIR CIRCULATION FOR WATER COOLED OR AIR COOLED COMPRESSORS.

STRUCTURAL SUPPORT AS WELL AS CURBS, PADS OR REDWOOD RAILS FOR COMPRESSORS, ON ROOF OR INSIDE STRUCTURE, TO BE PROVIDED BY OTHERS.

SEE MANUFACTURER'S SHOP DRAWINGS FOR DETAILED REQUIREMENTS FOR CLEARANCES, ACTUAL SIZES, MECHANICAL, PLUMBING & ELECTRICAL REQUIREMENTS. FOR WATER COOLED UNITS, STRICT ADHERENCE TO MANUFACTURER'S REQUIREMENTS FOR MIN/MAX WATER TEMP AND PRESSURE MUST BE MAINTAINED.

ASHRAE CALCULATIONS AND ANY RESULTING REQUIREMENTS FOR COMPRESSOR AREA, PIPING CHANGES AND FROST DETECTION SYSTEMS SHALL BE THE RESPONSIBILITY OF OTHERS.

ALL REFRIGERANT PIPING CHANGES AND BUILDING PENETRATIONS SHALL BE THE RESPONSIBILITY OF THE BUILDING TRADES AND TO COMPLY WITH ALL LOCAL CODES. EXACT LINE RUNS OF REFRIGERATION PIPING SHALL BE DETERMINED IN COORDINATION WITH THE REFRIGERATION INSTALLER.

ALL ELECTRICAL DISCONNECTS TO BE PROVIDED BY OTHERS.

IMPORTANT ELECTRICAL NOTE: FOR EACH FREEZER COMPRESSOR, ELECTRICIAN TO PROVIDE (1) 3/4" DIAMETER CONDUIT W/ (6) #10 WIRES & INTERCONNECT BETWEEN COMPRESSOR, EVAPORATOR COIL & TIME CLOCK. VERIFY ALL DETAILS WITH MANUFACTURER'S SHOP DRAWINGS.

ROOFTOP EXHAUST FANS & MAKE-UP AIR UNITS

THESE ROOF TOP ITEMS ARE TO BE LOCATED BY THE ARCHITECT & ENGINEERS IN CONJUNCTION WITH THE EXHAUST HOOD MANUFACTURER'S SHOP DRAWING. REFER TO ARCHITECTURAL/ENGINEERING DRAWINGS FOR EXACT LOCATIONS.

REFER TO THE LATEST APPROVED MANUFACTURER'S SHOP DRAWINGS FOR COMPLETE INFORMATION AND DETAILS REGARDING ALL ASPECTS OF FANS &/OR MAKE UP AIR UNITS, INCLUDING ACTUAL SIZES, REQUIRED CLEARANCE, ETC.

ALL PENETRATIONS THRU ROOF OR BUILDING STRUCTURE, INCLUDING WALLS, FLOORS, JOISTS OR OTHER STRUCTURAL MEMBERS, IS TO BE BY OTHERS.

ALL ELECTRICAL DISCONNECTS TO BE PROVIDED BY OTHERS.

IMPORTANT ELECTRICAL NOTE: ELECTRICAL CONTRACTOR SHALL PROVIDE WIRE, CONDUIT AND DISCONNECTS TO EXHAUST & SUPPLY FANS LOCATED ON ROOF (LOCATION TO BE DETERMINED BY OTHERS) W/ INTERCONNECTIONS TO SWITCHES BELOW. SEE MANUFACTURER'S SHOP DRAWING FOR COMPLETE ELECTRICAL DETAILS.

WALK-IN DRAIN LINE DETAIL

NOT TO SCALE

ELECT. OUTLET FOR DRAIN LINE HEAT TAPE (FREEZERS ONLY), MOUNTED INSIDE OF WALK-IN (BY E.C.). SEE SHEET K2 FOR LOCATION.

LOCATE "P" TRAP (IF REQUIRED) OUTSIDE OF WALK-IN BOX.

1" AIR GAP.

COOLER/FREEZER COIL.

12" SLOPE PER FOOT (MIN.), RUN TIGHT TO WALL & SECURE TO WALL.

HEATER TAPE WRAPPED AROUND DRAIN (WALK-IN FREEZER ONLY).

(FREEZERS ONLY) ELEC. HEAT TAPE SPIRALED AND TAPED ON FREEZER DRAIN LINE BEFORE APPLYING INSULATION BY OTHERS.

FLOOR SINK OR FLOOR DRAIN W/FUNNEL (PER LOCAL CODE).

4900 Crago Street, Suite 400
Denver, CO 80221
P 855.331.6100

trimarkusa.com

This document contains confidential information, is an instrument of a professional service, and the property of Trimark. It shall not be used on other projects or for the extension of this project without Trimark's written approval.

Owner and all Contractors to check and verify existing dimensions and conditions in the field before starting construction and to notify Trimark of any material or detail changes.

REVISIONS		
DATE	NO.	DESCRIPTION

SBV - KVC KITCHEN

2305 Mt. Werber Circle
Steamboat Springs, Co. 80487

PROJECT NUMBER:
2021-0423

DATE:
2021.06.04

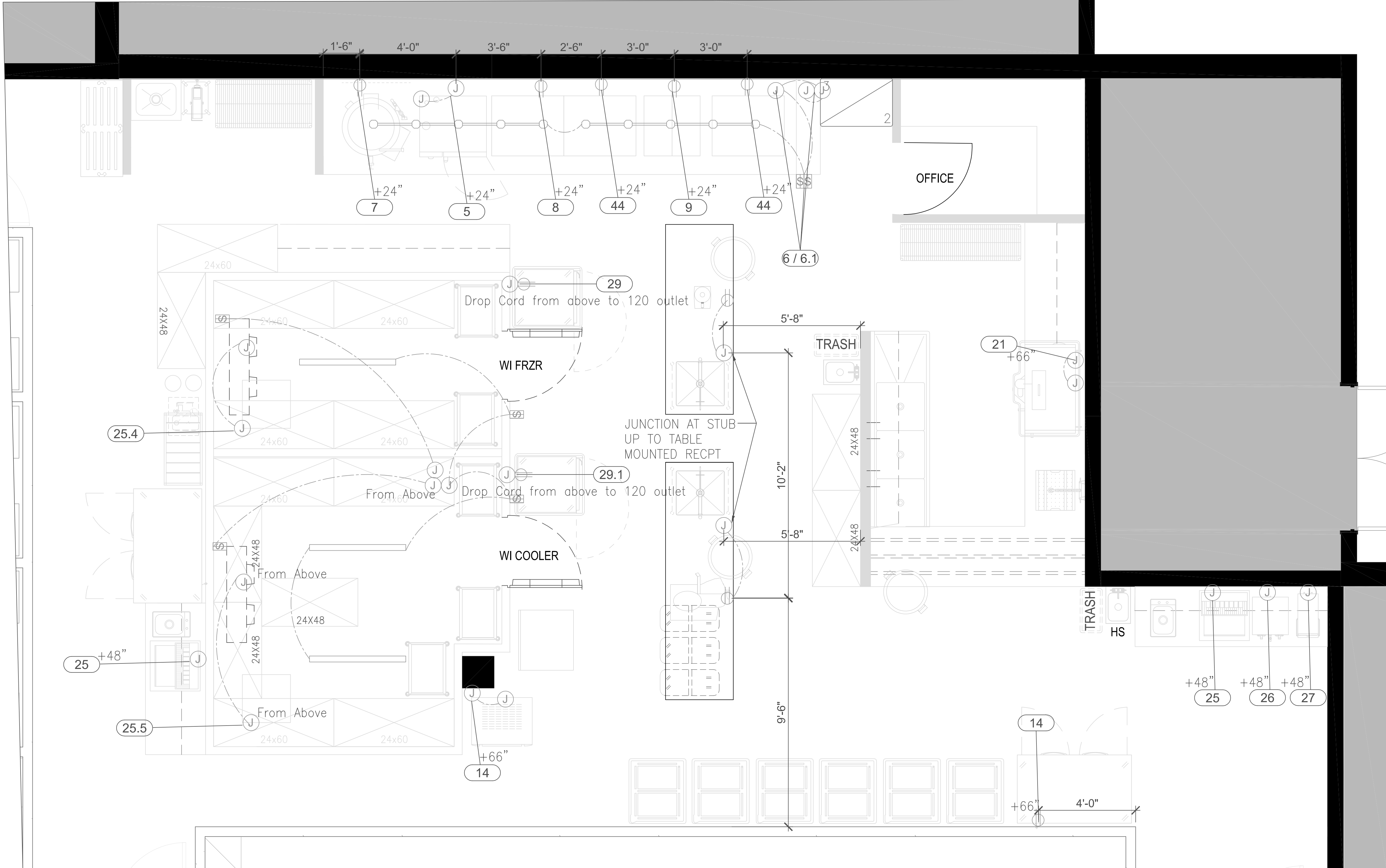
SCALE:

DRAWN BY:
SDS

APPROVED BY:

SHEET TITLE:
PLUMBING PLAN

SHEET NUMBER:
FS-3.0



ELECTRICAL NOTES

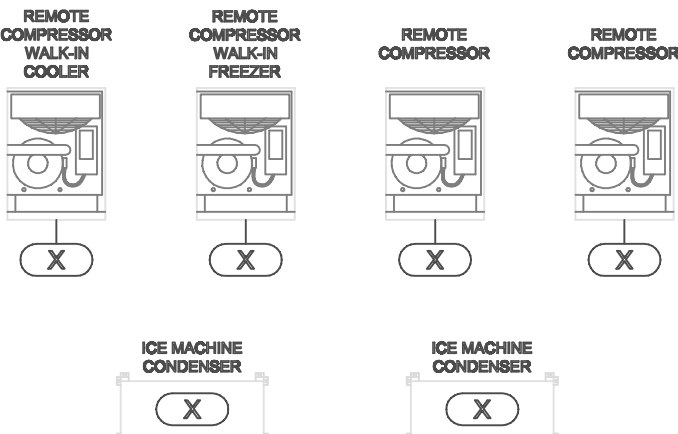
- THESE DRAWINGS ARE TO BE USED AS AN INSTRUMENT OF REFERENCE BY ALL OTHER TRADES AND CONTRACTORS. ALL TRADES SHALL VERIFY THE INFORMATION AS INDICATED ON THESE PLANS.
- DIMENSIONS AND REQUIREMENTS FOR ALL EQUIPMENT THAT IS LISTED AS EXISTING, PROVIDED BY OTHERS OR PROVIDED BY OWNER, MUST BE VERIFIED WITH THE APPROPRIATE PARTIES.
- ALL LOCAL, STATE AND NATIONAL CODES SHALL APPLY.
- THESE UTILITY REQUIREMENT DRAWINGS INDICATE THE UTILITY AND LOCATION OF REQUIREMENTS BASED ON THE EQUIPMENT SPECIFIED.
- ALL EQUIPMENT SHALL BE WIRED IN STRICT CONFORMANCE WITH THE MANUFACTURER'S INSTRUCTIONS AND/OR SHOP DRAWINGS.
- UNLESS OTHERWISE NOTED, ALL DIMENSIONS SHOWN ON THIS PLAN ARE FROM THE FINISHED FLOOR, CEILING, WALLS OR COLUMN CENTERLINES TO THE CENTERLINE OF THE ROUGH-INS.
- ALL ELECTRICAL CONNECTIONS ARE TO BE EXTENDED AND INTERCONNECTED TO CONNECTION POINTS ON THE EQUIPMENT BY OTHERS. UNLESS SPECIFIED, ALL HARDWARE REQUIRED FOR THESE CONNECTIONS SHALL BE SUPPLIED BY THE ELECTRICAL CONTRACTOR.
- SURFACE MOUNTED WIRE AND CONDUIT WILL NOT BE ALLOWED. ALL ELECTRICAL LINES AND CONDUIT SHALL BE EXTENDED THROUGH AND OUT OF BUILDING WALLS WHERE POSSIBLE. WHERE SURFACE MOUNTED CONDUIT IS UNAVOIDABLE, IT MUST BE COORDINATED WITH HOCKENBERGS.
- ROUGH-INS OUT OF FLOOR SHOULD BE STUBBED UP 4" ABOVE FINISHED FLOOR AND BROUGHT TO THE REQUIRED HEIGHT AFTER EQUIPMENT IS SET IN PLACE.
- ALL 120 VOLT UTILITY OUTLETS TO BE G.F.C.I. OUTLETS.
- ALL NECESSARY ELECTRICAL DISCONNECTS, SHUNT TRIP BREAKERS AND STARTERS ARE TO BE FURNISHED AND INSTALLED BY OTHERS, UNLESS PROVIDED AS A STANDARD OR SPECIFIED EQUIPMENT COMPONENT OF THE EQUIPMENT MANUFACTURER. THIS SHALL INCLUDE ELECTRICAL DISCONNECTS FOR ALL REMOTE COMPRESSORS, BOOSTER HEATERS AND OTHER ITEMS REQUIRED BY CODE.
- ALL NECESSARY ELECTRICAL SUPPLIES UNDER COOKING LINE EXHAUST HOOD ARE TO SHUT DOWN WITH SHUNT TRIP BREAKERS (BY OTHERS) CONNECTED TO FIRE SYSTEM. ELECTRICAL ENGINEER TO CONFIRM COMPLIANCE TO ALL CODES.
- ALL OUTLETS, JUNCTION BOXES, DISCONNECTS, ETC. SHALL BE INSTALLED SO AS NOT TO INTERFERE WITH THE PERFORMANCE, FUNCTION, OR PLACEMENT OF THE EQUIPMENT.
- STARTERS, RELAYS, HEATERS AND SWITCHES REQUIRED FOR EXHAUST AND SUPPLY FANS ARE TO BE PROVIDED AND INSTALLED BY THE ELECTRICAL CONTRACTOR.
- DISHMACHINES:
 - ELECTRICAL CONTRACTOR SHALL INTERCONNECT DISH MACHINE WITH DISH MACHINE EXHAUST FAN. INTERCONNECTION SHALL LINK OPERATION OF EXHAUST FAN AND DISH MACHINE SO THAT BOTH UNITS RUN SIMULTANEOUSLY AT ALL TIMES.
 - ELECTRICAL CONTRACTOR SHALL INTERCONNECT TABLE LIMIT SWITCH AT END OF CLEAN DISHTABLE WITH CONVEYOR TYPE DISH MACHINES. LIMIT SWITCH SHALL TERMINATE DISH-MACHINE OPERATION WHEN DEPRESSED.
- WALK-IN COOLER/FREEZER BOXES & REMOTE COMPRESSORS:
 - INTERCONNECT TO BLOWER COIL IN FREEZER.
 - INTERCONNECT BETWEEN TIMER & CONTACTOR.
 - INTERCONNECT BETWEEN TIMER & PRESSURE CONTROL SOLENOID.
 - INTERCONNECT BETWEEN CONTACTOR AND COMPRESSOR FAN.
 - INTERCONNECT BETWEEN TERMINAL AND CONTACTOR TO BLOWER COIL IN FREEZERS.
 - CONNECT DRAIN LINE HEATER TO RECEPTACLE IN FREEZER.
 - CONNECT PAN HEATER TO TERMINAL STRIP IN FREEZERS.
 - CONNECT DOOR HEATER TO TERMINAL STRIP IN FREEZERS.
- ALL ELECTRICAL CONDUIT TO BE RUN ON TOP (EXTERIOR) OF WALK-IN COOLER/FREEZER BOX WHERE POSSIBLE.
- UNLESS PROVIDED BY THE MANUFACTURER, ALL LIGHT BULBS FOR FOODSERVICE EQUIPMENT TO BE PROVIDED BY OTHERS.

ELECTRICAL SYMBOLS

ITEM NUMBER	CONNECTION NUMBER	ELECTRICAL ROUGH-IN NOTE (SEE SCHEDULE)
⊕		SINGLE RECEPTACLE
⊕		DUPLEX RECEPTACLE
⊕		QUAD RECEPTACLE
⊕		ISOLATED GROUND DUPLEX RECEPTACLE
⊕		HIGH VOLTAGE RECEPTACLE
⊕		JUNCTION BOX
⊕		SPECIAL OUTLET
⊕		WALL SWITCH
⊕		TELEPHONE
⊕		DATA
⊕		USB RECEPTACLE
⊕		ELECTRICAL INTERCONNECTION

REMOTE COMPRESSORS & CONDENSING UNITS

THESE NOTES APPLY TO MULTI-SYSTEM COMPRESSOR RACKS AS WELL AS INDIVIDUAL COMPRESSORS AND CONDENSERS.



IMPORTANT ELECTRICAL NOTE: FOR EACH FREEZER COMPRESSOR, ELECTRICAL TO PROVIDE (1) 3/4" DIAMETER CONDUIT (W/6) #10 WIRES & INTERCONNECT BETWEEN COMPRESSOR, EVAPORATOR COIL & TIME CLOCK. VERIFY ALL DETAILS WITH MANUFACTURER'S SHOP DRAWINGS.

EXACT LOCATION OF COMPRESSORS ARE TO BE DETERMINED BY ARCHITECT. FREE & EASY ACCESS INTO AREA FOR COMPRESSORS MUST BE PROVIDED BY OTHERS, TO ALLOW PLACEMENT OF RACK AS WELL AS MAINTAIN MINIMUM CLEARANCE REQUIREMENTS.

SUFFICIENT AIR CHANGES MUST BE PROVIDED IN THIS AREA TO ALLOW ADEQUATE AIR CIRCULATION FOR WATER COOLED OR AIR COOLED COMPRESSORS.

STRUCTURAL SUPPORT AS WELL AS CURBS, PADS OR REDWOOD RAILS FOR COMPRESSORS, ON ROOF OR INSIDE STRUCTURE, TO BE PROVIDED BY OTHERS.

SEE MANUFACTURER'S SHOP DRAWINGS FOR DETAILED REQUIREMENTS FOR CLEARANCES, ACTUAL SIZES, MECHANICAL, PLUMBING & ELECTRICAL REQUIREMENTS. FOR WATER COOLED UNITS, STRICT ADHERENCE TO MANUFACTURER'S REQUIREMENTS FOR MIN, MAX, WATER TEMP AND PRESSURE MUST BE MAINTAINED.

ASHRAE CALCULATIONS AND ANY RESULTING REQUIREMENTS FOR COMPRESSOR AREA, PIPING CHANGES AND FROST DETECTION SYSTEMS SHALL BE THE RESPONSIBILITY OF OTHERS.

ALL REFRIGERANT PIPING CHANGES AND BUILDING PENETRATIONS SHALL BE THE RESPONSIBILITY OF THE BUILDING TRADES AND TO COMPLY WITH ALL LOCAL CODES. EXACT LINE RUNS OF REFRIGERATION PIPING SHALL BE DETERMINED IN COORDINATION WITH THE REFRIGERATION INSTALLER.

ALL ELECTRICAL DISCONNECTS TO BE PROVIDED BY OTHERS.

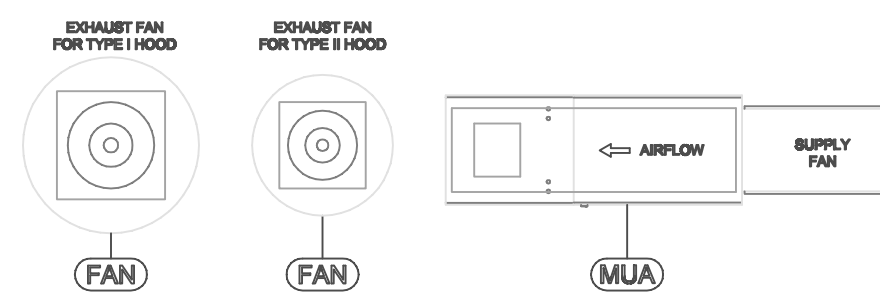
ROOFTOP EXHAUST FANS & MAKE-UP AIR UNITS

THESE ROOF TOP ITEMS ARE TO BE LOCATED BY THE ARCHITECT & ENGINEERS IN CONJUNCTION WITH THE EXHAUST HOOD MANUFACTURER'S SHOP DRAWING. REFER TO ARCHITECTURAL/ENGINEERING DRAWINGS FOR EXACT LOCATIONS.

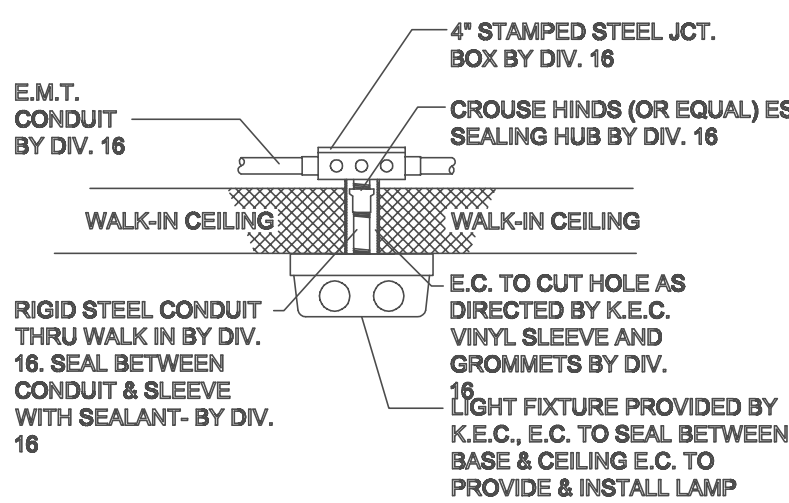
REFER TO THE LATEST APPROVED MANUFACTURER'S SHOP DRAWINGS FOR COMPLETE INFORMATION AND DETAILS REGARDING ALL ASPECTS OF FANS &/OR MAKE UP AIR UNITS, INCLUDING ACTUAL SIZES, REQUIRED CLEARANCE, ETC.

ALL PENETRATIONS THRU ROOF OR BUILDING STRUCTURE, INCLUDING WALLS, FLOORS, JOISTS OR OTHER STRUCTURAL MEMBERS, IS TO BE BY OTHERS.

ALL ELECTRICAL DISCONNECTS TO BE PROVIDED BY OTHERS.

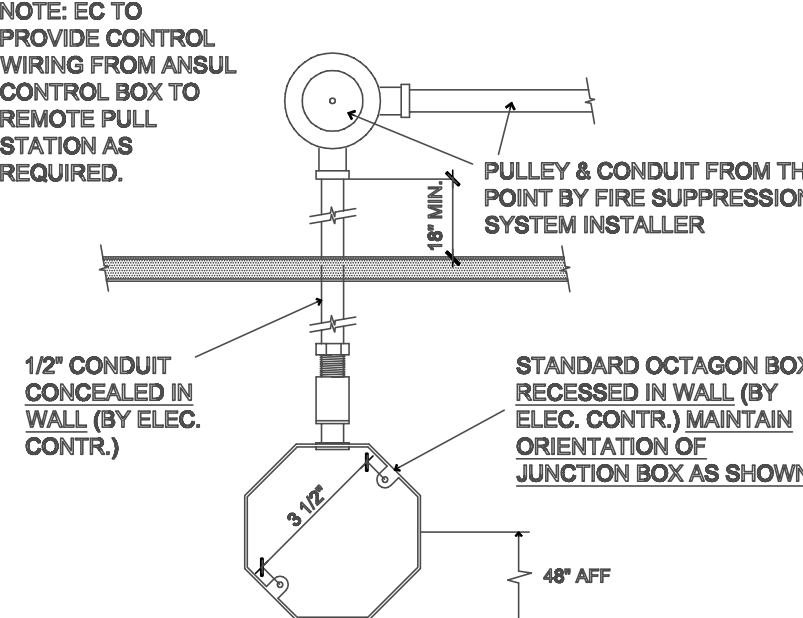


IMPORTANT ELECTRICAL NOTE: ELECTRICAL CONTRACTOR SHALL PROVIDE WIRE, CONDUIT AND DISCONNECTS TO EXHAUST & SUPPLY FANS LOCATED ON ROOF (LOCATION TO BE DETERMINED BY OTHERS) W/ INTERCONNECTIONS TO SWITCHES BELOW. SEE MANUFACTURER'S SHOP DRAWING FOR COMPLETE ELECTRICAL DETAILS.



- ALL CONDUIT TO BE RUN ON EXTERIOR OF WALK-IN BY DIV. 16 UNLESS BOX IS LOCATED OUTDOORS. THEN CONDUIT IS TO RUN BELOW CEILING.
- ALL PENETRATIONS THRU WALK-IN TO BE THOROUGHLY SEALED
- ALL LIGHT FIXTURES TO BE FURNISHED BY E.C.
- MOUNTING FIXTURES, ALL CONDUIT AND ALL INTER-WIRING BY DIV. 16.
- ALL LAMPS (BULBS) TO BE FURNISHED BY OTHERS.

WALK-IN LIGHT DETAIL
NOT TO SCALE



REMOTE FIRE PULL DETAIL
NOT TO SCALE

4900 Crago Street, Suite 400
Denver, CO 80221
P 855.331.6100

trimarkusa.com

This document contains confidential information, is an instrument of a professional service, and the property of Trimark. It shall not be used on other projects or for the extension of this project without Trimark's written approval.

Owner and all Contractors to check and verify existing dimensions and conditions in the field before starting construction and to notify Trimark of any material or detail changes.

REVISIONS

DATE	NO.	DESCRIPTION
------	-----	-------------

DATE	NO.	DESCRIPTION

SBV - KVC KITCHEN

2305 Mt. Werber Circle
Steamboat Springs, Co.
80487

PROJECT NUMBER:

2021-0423

DATE:

2021.06.04

SCALE:

DRAWN BY:

SDS

APPROVED BY:

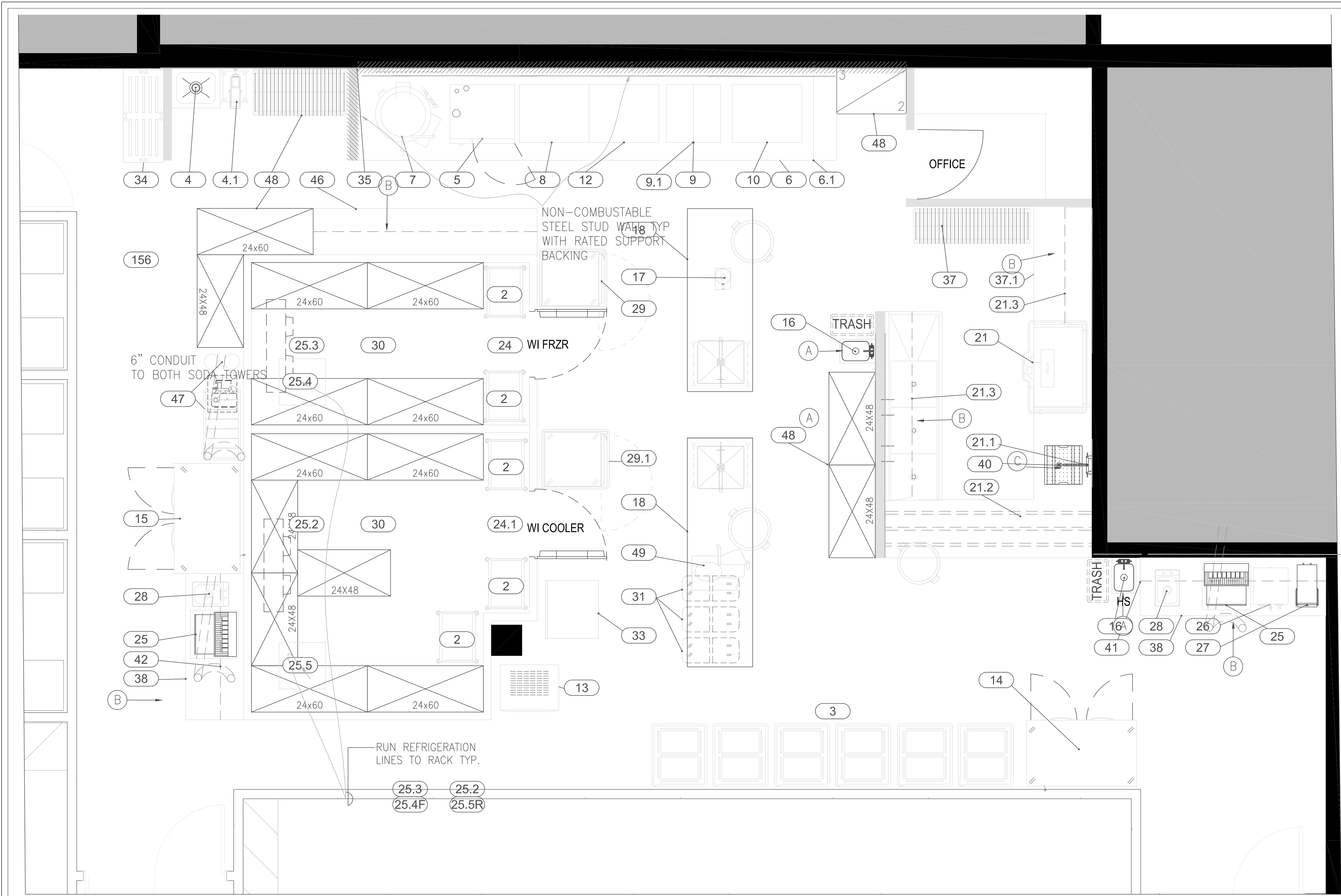
-

SHEET TITLE:

ELECTRICAL PLAN

SHEET NUMBER:

FS-4.0

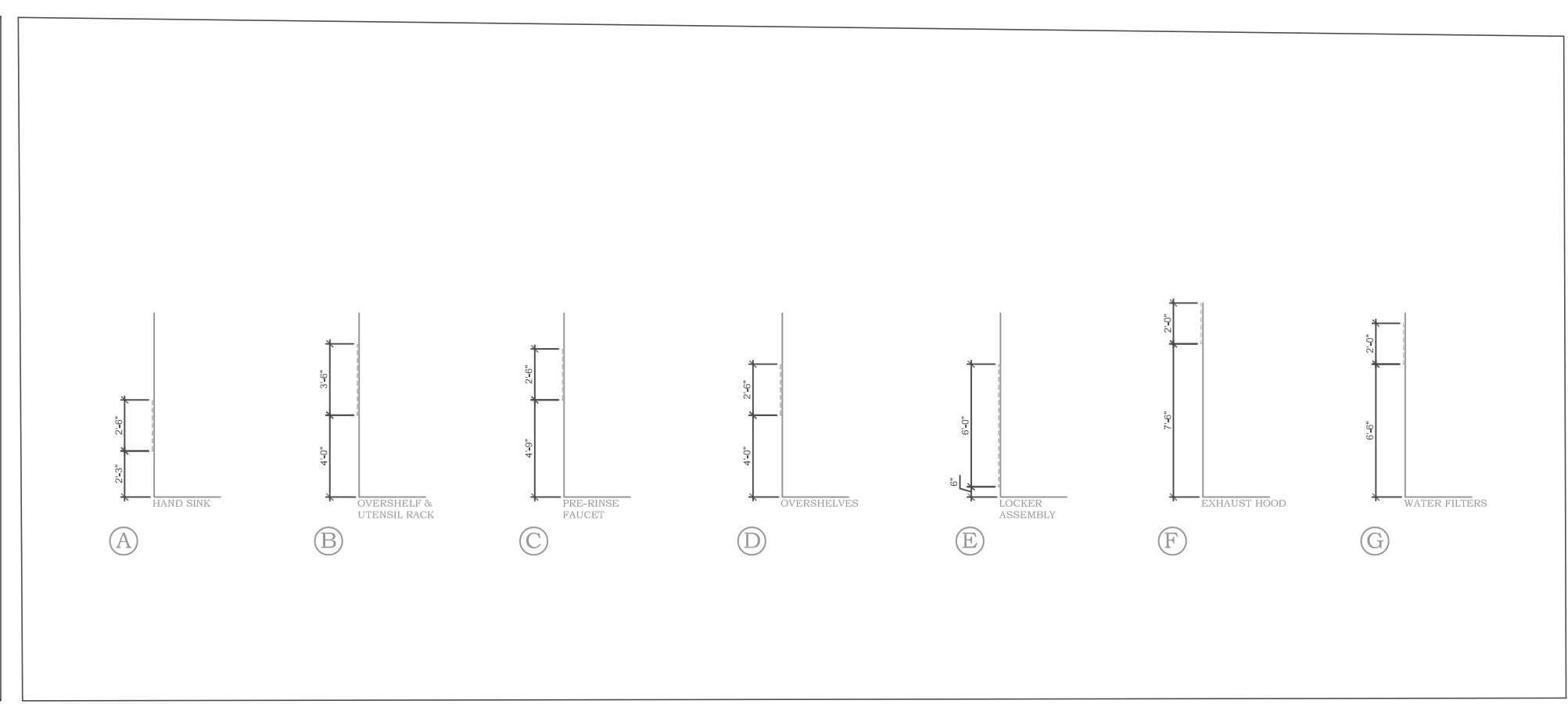
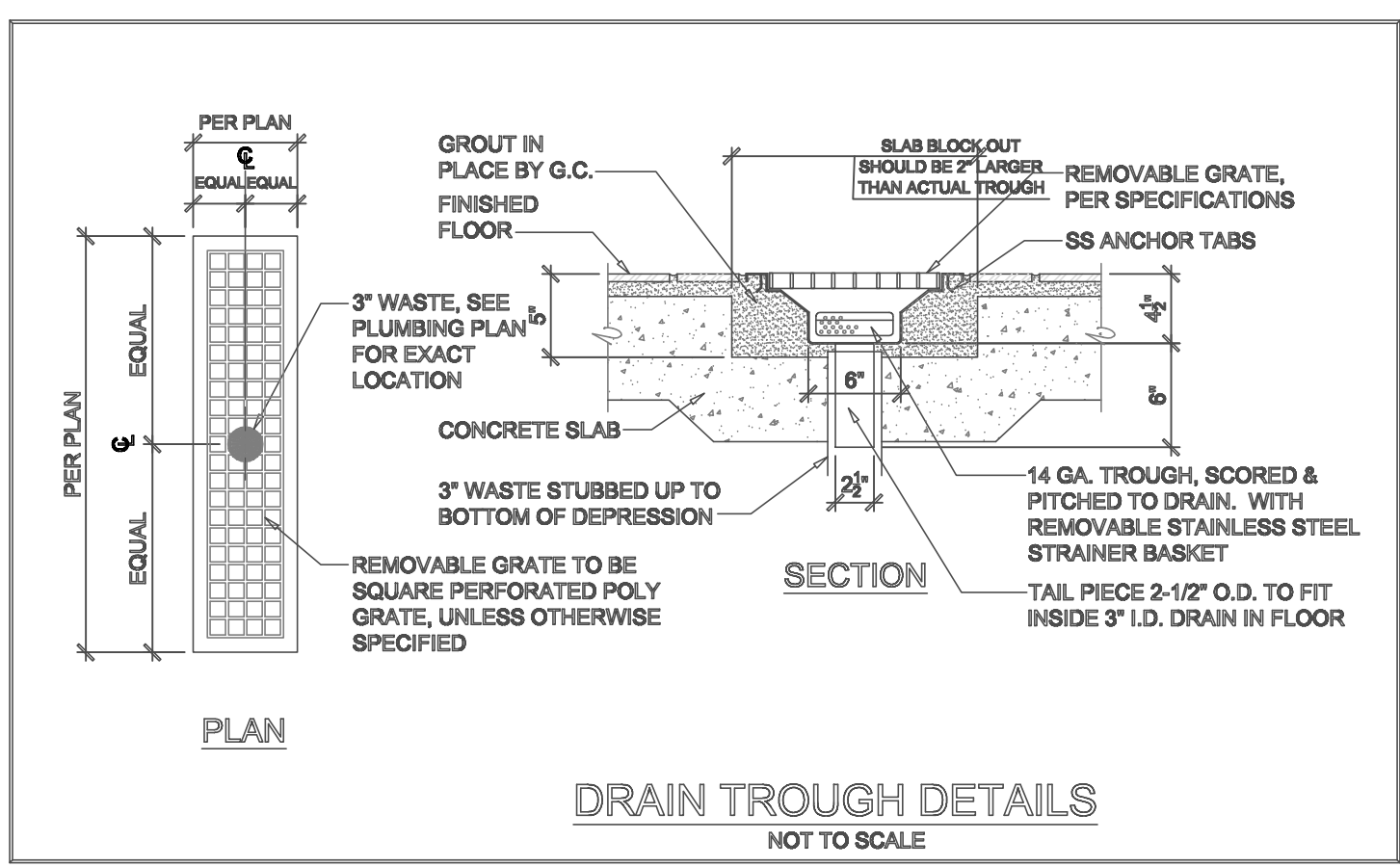
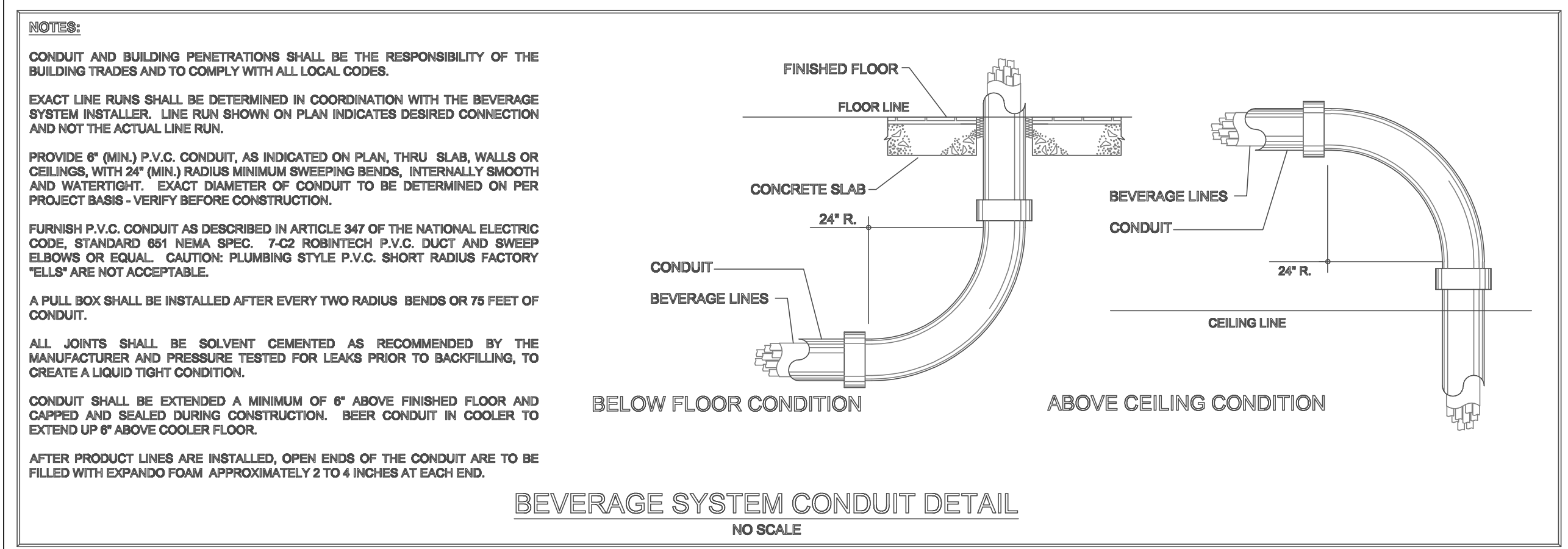


GENERAL CONSTRUCTION NOTES

1. THESE DRAWINGS ARE TO BE USED AS AN INSTRUMENT OF REFERENCE BY ALL OTHER TRADES AND CONTRACTORS. ALL TRADES SHALL VERIFY THE INFORMATION AS INDICATED ON THESE PLANS.
2. DIMENSIONS AND REQUIREMENTS FOR ALL EQUIPMENT THAT IS LISTED AS EXISTING, PROVIDED BY OTHERS OR PROVIDED BY OWNER, MUST BE VERIFIED WITH THE APPROPRIATE PARTIES.
3. ALL LOCAL, STATE AND NATIONAL CODES SHALL APPLY.
4. ARCHITECT TO LOCATE, GENERAL CONTRACTOR TO PROVIDE ALL OPENINGS IN WALLS, FLOORS, CEILINGS, AND ROOFS FOR THE EXTENSION OF REFRIGERATION LINES, BEVERAGE LINES, ELECTRICAL LINES, PLUMBING LINES, EXHAUST AND SUPPLY VENTILATION DUCTS, CURBS, PITCH POCKETS OR SPECIAL FINISHING FOR THESE OPENINGS SHALL BE SUPPLIED BY OTHERS.
5. SUPPLY FANS TO BE LOCATED A MINIMUM OF 10'-0" FROM ANY AIR INLET OR OUTLET ON THE ROOF SUCH AS EXHAUST FANS, VENT STACKS, AIR CONDITIONERS, REFRIGERATION COMPRESSORS, ETC.
6. ALL INFORMATION PROVIDED FOR FOOD SERVICE HOOD SYSTEMS PERTAINING TO QUANTITY, SIZE AND LOCATION OF EXHAUST AND SUPPLY DUCT COLLARS, CFM RATINGS AND STATIC PRESSURE MUST BE CONFIRMED WITH THE MANUFACTURER'S APPROVED SHOP DRAWINGS.
7. GENERAL CONTRACTOR TO PROVIDE 3/4" PLYWOOD WALL BACKING ON WALLS FOR WALL MOUNTED EQUIPMENT. ALTERNATIVE FOR PLYWOOD MUST BE USED UNDER HOODS AND AT FIRE RATED WALLS PER LOCAL CODES. ALL WALL BACKING MUST BE BEHIND WALL FINISH. NO EXPOSED WALL BACKING SHALL BE ALLOWED. LOCATION AND HEIGHT TO BE COORDINATED WITH MANUFACTURER'S SHOP DRAWINGS AND SPECIFICATION SHEETS.
8. PROVIDE COVERED BASES AT ALL VERTICAL INTERSECTIONS OF FLOORS IN KITCHEN AND STORAGE AREAS.
9. ALL HVAC REGISTERS ARE TO BE LOCATED SO AS TO PREVENT ANY INTERFERENCE IN PERFORMANCE OF EXHAUST HOODS, HEATERS OR WARMERS.
10. BOTTOM OF HOODS ARE TO BE MOUNTED AT 6'-6" ABOVE FINISHED FLOOR, UNLESS OTHERWISE SPECIFIED BY LOCAL CODES.
11. RECOMMENDED CEILING HEIGHTS ARE LISTED BELOW. CONTACT HOCKENBERG'S IMMEDIATELY IF MINIMUM HEIGHTS ARE LESS THAN THOSE INDICATED:
A. KITCHEN AREAS WITH EXHAUST HOODS: 8'-8"
B. KITCHEN AREAS WITH WALK-IN COOLER/FREEZERS: 9'-6"
C. KITCHEN AREAS WITH ICE MACHINES &/or COMPRESSORS: 9'-0"
D. GENERAL KITCHEN AREAS: 8'-0"
12. REMOTE CONDENSING UNITS & COMPRESSOR UNITS ARE TO BE LOCATED OUTSIDE WHERE POSSIBLE. FOR INSIDE LOCATIONS, VERIFY PROVISION OF SUFFICIENT VENTILATION WITH MANUFACTURER. ARCHITECT TO LOCATE ALL REMOTE COMPRESSORS AND CONDENSERS IN ACCORDANCE WITH MANUFACTURER'S INSTRUCTIONS.

GENERAL CONSTRUCTION & BUILDING WORKS LEGEND

- ⊕ BEVERAGE LINE
- IN WALL BACKING
- SODA LINE CONDUIT
- BEER/WINE LINE CONDUIT



4900 Casper Street, Suite 400
Denver, CO 80221
P 855.331.6100

trimarkusa.com

This document contains confidential information, is an instrument of a professional service, and the property of Trimark. It shall not be used on other projects or for the extension of this project without Trimark's written approval.

Owner and all Contractors to check and verify existing dimensions and conditions in the field before starting construction and to notify Trimark of any material or detail changes.

REVISIONS		
DATE	NO.	DESCRIPTION

SBV - KVC KITCHEN

2305 Mt. Werber Circle
Steamboat Springs, Co.
80487

PROJECT NUMBER:
2021-0423

DATE:
2021.06.04

SCALE:

DRAWN BY:
SDS

APPROVED BY:

SHEET TITLE:
BUILDING WORKS PLAN

SHEET NUMBER:
FS-5.0

trimarkusa.com

This document contains confidential information, is an instrument of a professional service, and the property of TriMark. It shall not be used on other projects or for the extension of this project without TriMark's written approval.

Owner and all Contractors to check and verify existing dimensions and conditions in the field before starting construction and to notify TriMark of any material or detail changes.

REVISIONS		
DATE	NO.	DESCRIPTION

BV-KVC KITCHEN

2305 Mt. Werber Circle
Steamboat Springs, Co.
80487

PROJECT NUMBER: 2021-0423

DATE: 2021.08.04

SCALE: _____

DRAWN BY: SDS	APPROVED BY: -
----------------------	-----------------------

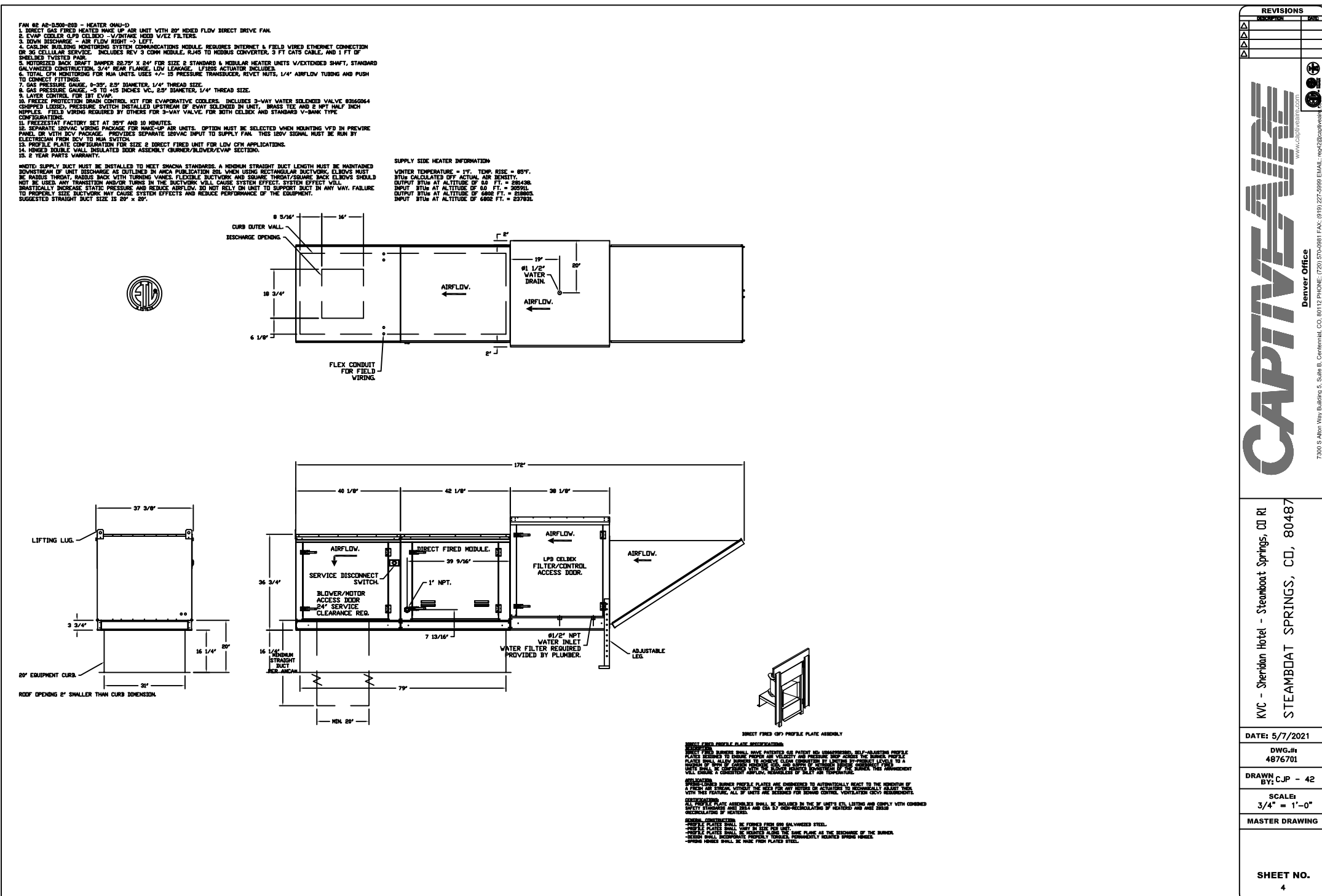
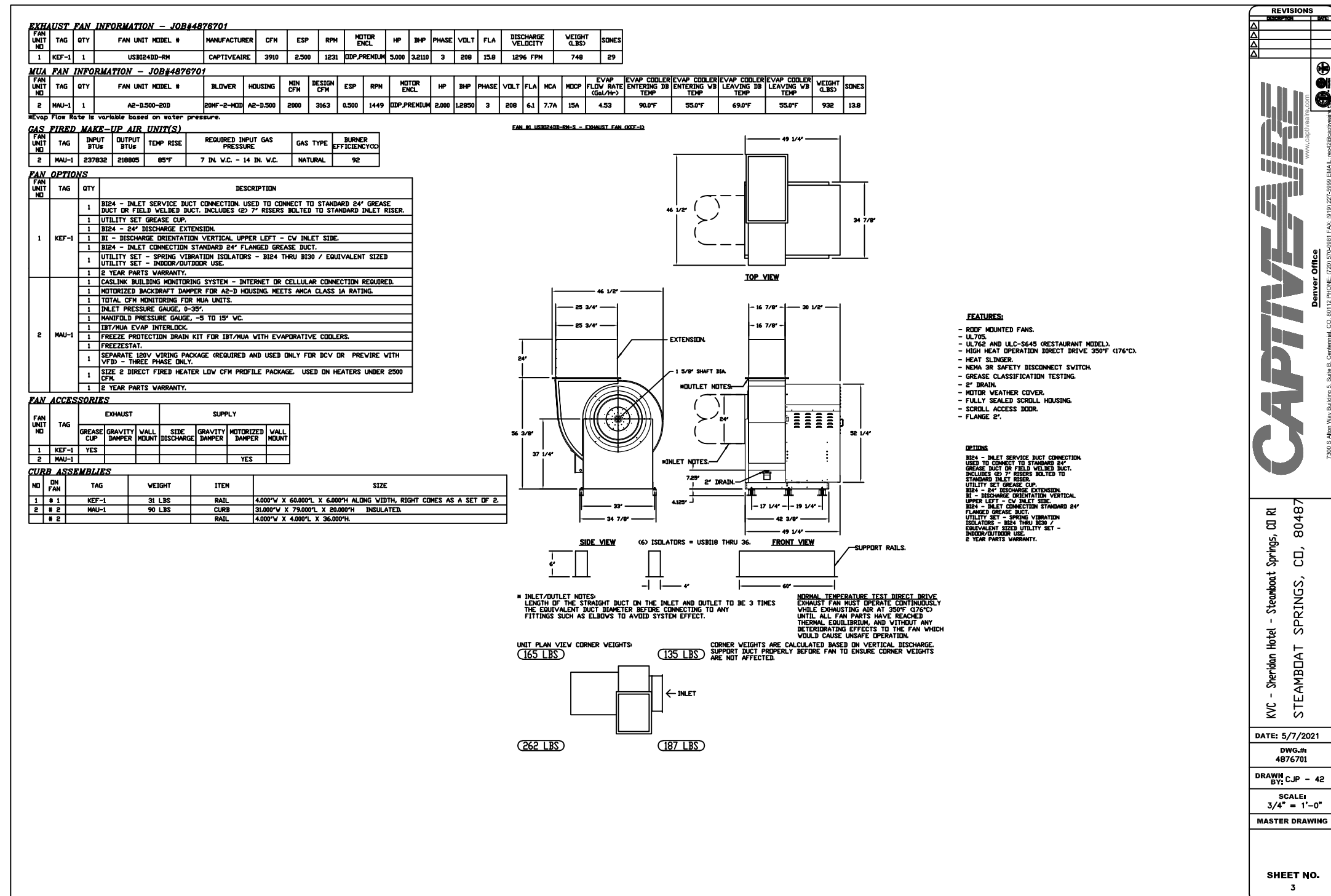
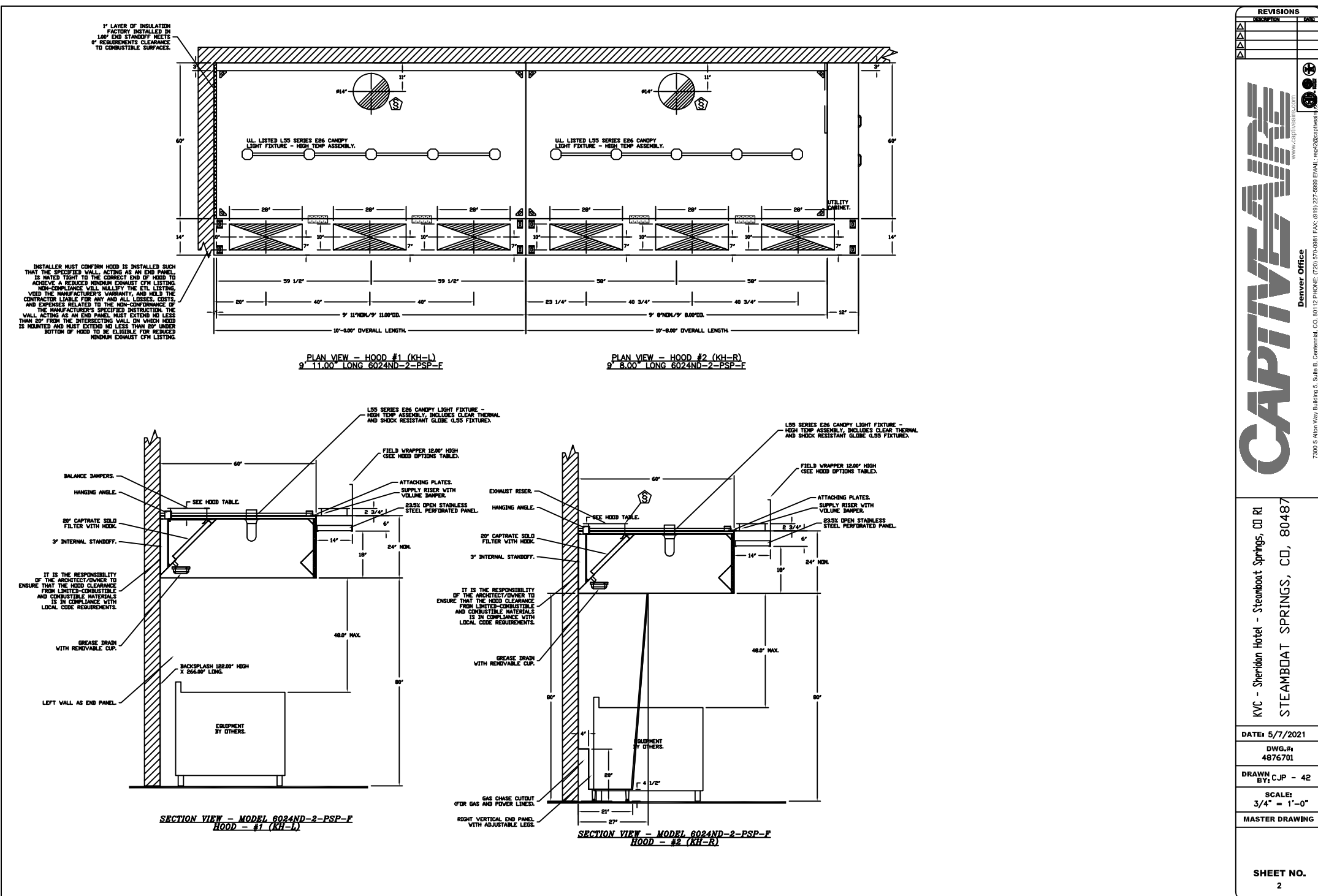
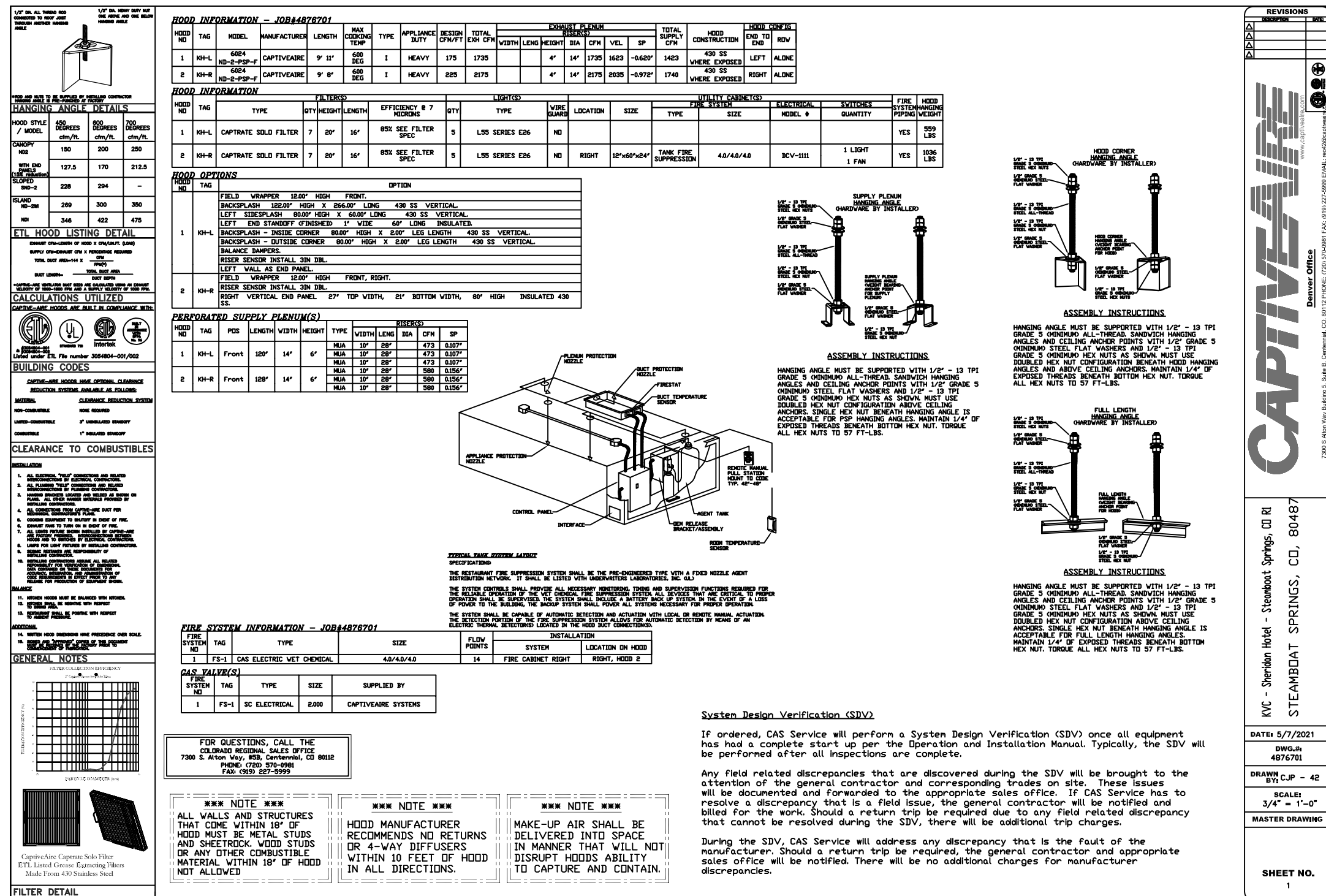
SHEET TITLE:

EXHAUST HOOD PLAN

SHEET NUMBER

FS-6.0

THIS DOCUMENT WAS ORIGINALLY PRINTED ON A 24" x 36" SIZE SHEET



Owner and all Contractors to check and verify existing dimensions and conditions in the field before starting construction and to notify TriMark of any material or data changes.

--	--	--

2305 Mt. Werber Circle
Steamboat Springs, Co.

FS-6.2

THIS DOCUMENT WAS ORIGINALLY PRINTED ON A 24" x 36" SIZE SHEET

