

GENERAL DRAWING NOTES

1. WHERE DIFFERENCES APPEAR BETWEEN PLUMBING DRAWINGS AND ARCHITECTURAL DRAWINGS IN THE QUANTITIES AND LOCATIONS OF PLUMBING FIXTURES, THE ARCHITECTURAL DRAWINGS SHALL BE USED FOR PRICING. WHERE NECESSARY, THE CONTRACTOR SHALL USE UNIT PRICING FOR WASTE AND VENT PIPING TO EACH PLUMBING FIXTURE.

GENERAL PLUMBING CONTRACT REQUIREMENTS

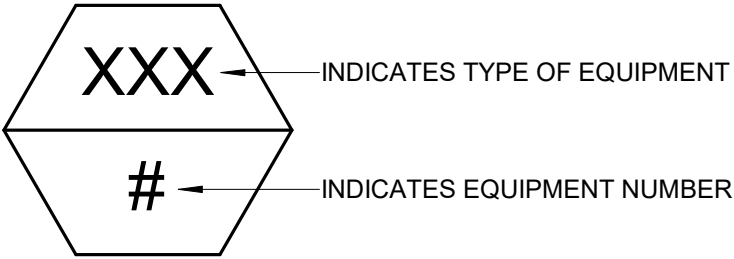
1. PREPARE SHOP DRAWINGS OF ALL NEW WORK (INCLUDING SLEEVE LOCATIONS) TO VERIFY LOCATIONS AND COORDINATION OF WORK BETWEEN TRADES PRIOR TO INSTALLATION.
2. ALL DRAIN GRATES, CLEANOUT COVERS, AND OTHER FINISHED OR EXPOSED COMPONENTS SHALL BE PROTECTED FROM DAMAGE. DAMAGED COMPONENTS SHALL BE REPLACED BY CONTRACTOR AT NO ADDITIONAL COST TO THE CONTRACT.
3. COORDINATE ROUTING OF ALL PLUMBING PIPING BELOW SLAB WITH STRUCTURAL GRADE BEAMS, TIE BEAMS, ETC. ALLOW FOR REROUTING OF PIPING AS REQUIRED.
4. PIPING ROUTING ON DRAWINGS IS GENERALLY DIAGRAMMATIC WITH EFFORTS DURING DESIGN TO AVOID CONFLICTS. CONTRACTOR SHALL COORDINATE ROUTING OF ALL PIPING THROUGH BUILDING WITH STRUCTURAL CONDITIONS. CONTRACTOR COORDINATION DRAWINGS SHALL REFLECT ALL PIPE ROUTING AND PIPING THAT MAY HAVE TO BE SHIFTED OR MOVED TO AVOID CONFLICTS. SHIFTED OR MOVED PIPING SHALL REFLECT NO ADDITIONAL COST TO THE PROJECT.
5. ALL REQUIRED OPENINGS IN CONCRETE BEAMS AND STRUCTURAL WALLS ARE TO BE ACCOMPLISHED USING SLEEVES PROPERLY SIZED FOR THE PIPE THEY SERVE. CORE DRILLING IN BEAMS IS NOT ALLOWED. CORE DRILLING IN PANS IS ALLOWED UPON PRIOR APPROVAL OF ARCHITECT AND STRUCTURAL ENGINEER.
6. ALL HORIZONTAL SANITARY PIPING 2-1/2" AND SMALLER WHETHER BELOW OR ABOVE GRADE SHALL SLOPE AT 1/4"/FT. ALL PIPING 3" AND LARGER SHALL SLOPE AT 1/8"/FT UNLESS OTHERWISE NOTED. ALL STORM AND OVERFLOW PIPING SHALL SLOPE AT 1/8"/FT UNLESS OTHERWISE NOTED. ALL GREASE WASTE PIPING SHALL SLOPE AT 1/4"/FT.
7. REFERENCE CIVIL DIVISION DRAWINGS FOR REQUIRED POINT OF CONNECTION AND INVERT REQUIREMENTS. IN GENERAL, THE POINT OF CONNECTION IS AT A POINT 5 FEET OUTSIDE OF BUILDING FOOTPRINT. CONFORM WORK TO MEET INVERT ELEVATIONS ON CIVIL PLANS.
8. CAP ALL SANITARY AND STORM TEES FOR FUTURE BRANCH PIPING AND STAKE LOCATION OF PIPING FOR CONNECTION TO FUTURE BRANCH LINES.
9. WHERE SHOWN, MINIMIZE THE NUMBER OF JOINTS ON ANY PRESSURIZED PIPING BELOW CONCRETE SLABS. ALL BELOW GRADE PIPING TO BE PRESSURE TESTED AND WITNESSED BY ARCHITECT PRIOR TO BACKFILLING.
10. ALL CLEANOUTS FOR HORIZONTAL STORM DRAINAGE SYSTEM SHALL BE PIPE SIZE OR MAXIMUM 6" FOR LARGER PIPE.
11. IN ADDITION TO THE CLEANOUT LOCATIONS SHOWN ON DRAWINGS, CLEANOUTS SHALL BE PROVIDED IN ACCORDANCE WITH THE LOCAL GOVERNING CODE. ADDITIONAL CLEANOUTS SHALL BE PROVIDED AS FOLLOWS:
- A. EACH RUN OF PIPING WHICH IS MORE THAN 75 FEET IN LENGTH OR FRACTION THEREOF.
- B. HORIZONTAL LINES 5 FEET OR MORE.
- C. HORIZONTAL LINES FOR EACH AGGREGATE CHANGE OF DIRECTION EXCEEDING 135 DEGREES.
- D. AT THE BASE OF ALL SANITARY AND STORM RISERS, ALL VERTICAL CLEANOUTS SHALL BE SIZED TO ACCOMMODATE THE LARGEST PIPE ON THAT BRANCH LINE, BUT NEVER LARGER THAN 4".
- E. ALL GREASE WASTE PIPING SHALL HAVE CLEANOUTS EVERY 50 FEET OR FRACTION THEREOF AND AS NOTED ABOVE.
- F. AT THE END OF FIXTURE BANKS TO INCLUDE WATER CLOSETS, URINALS AND LAVATORIES. CLEAOUT PLUG SHALL BE A MINIMUM OF 24" AFF.
12. NO GAS LINES SHALL BE LOCATED BELOW BUILDING SLAB. ALL GAS PIPING IN AIR PLENUMS SHALL BE WELDED.
13. PROVIDE ISOLATION VALVES ON ALL PIPING SERVING HOSE BIBBS.
14. STANDARD ROOF DRAINAGE IS SIZED AT 3"/HR. OVERFLOW DRAINAGE IS ACCOMPLISHED THROUGH ARCHITECTURAL ROOF SCUPPERS. WHERE OVERFLOW DRAINS ARE USED, THEY WILL BE SIZED USING 3"/HR RATE.
15. WATER HAMMER ARRESTORS (SHOCK ABSORBERS) SHALL BE INSTALLED BETWEEN THE LAST 2 FLUSH VALVE FIXTURES. WHEN THE COLD WATER HEADER IS 20 FEET OR LONGER, A SECOND ARRESTOR SHALL BE INSTALLED HALFWAY DOWN THE HEADER. THE SIZES OF THE ARRESTORS SHALL BE BASED ON PDI SIZING.
16. ALL FLOOR DRAINS IN BUILDING EXCEPT DRAINS IN SHOWERS AND SHOWER AREAS SHALL BE INSTALLED WITH A PROSET TRAP GUARD.
17. ALL DOMESTIC WATER PIPING SERVING TOILET OR RESTROOM GROUPS SHALL BE INSTALLED WITH ISOLATION VALVES IN ORDER TO ISOLATE THESE AREAS WITHOUT CLOSING DOWN ANY OTHER PORTION OF THE BUILDING WATER SUPPLY SYSTEMS. ALL ISOLATION VALVES SHALL BE ACCESSIBLE WITH ACCESS PANELS. MINIMUM ACCESS PANEL SIZE SHALL BE 12"x12". ACCESS PANELS SHALL BE OF THE SAME RATING AS THE STRUCTURAL ELEMENT IN WHICH THEY ARE INSTALLED.
18. ALL GAS PRESSURE REDUCING VALVES SHALL BE PROVIDED WITH VENT PIPING TO ATMOSPHERE.
19. THROUGHOUT THE DRAWINGS, NUMBERS ARE SHOWN IN BRACKETS TO INDICATE QUANTITIES OF UNITS CARRIED WITHIN THE DIFFERENT PIPING SYSTEMS. THEY REPRESENT THE FOLLOWING:
- CW (X)/X1 = (CPM)/(CPM)
- GAS (X)/X1 = (CFH)/(CFH)
- SAN (X)/X1 = (DFU)/(DFU)
- VENT (X)/X1 = (DFU)/(DFU)
- STOD (X)/X1 = (FT2)/(FT2)
- FOR CALCULATION PURPOSES OF ALL PIPE SIZES, VALUES SHOWN ARE WITHIN 10 PERCENT OF ACTUAL LOAD VALUES.
20. ALL EQUIPMENT AND PIPING SHALL BE BRACED FOR SEISMIC REQUIREMENTS APPLICABLE FOR SEISMIC ZONE REQUIREMENTS FOR THIS PROJECT.
21. REFER TO GENERAL MECHANICAL CONTRACT REQUIREMENT NOTES ON MECHANICAL DRAWINGS FOR GENERAL PIPING HEAT TRACE INSTALLATION REQUIREMENTS.
22. PROVIDE DIELECTRIC FITTINGS AT ALL CONNECTIONS BETWEEN DISSIMILAR METALS AND AS SHOWN ON DRAWINGS.
23. ALL TEMPERING VALVES TO BE SET FOR 110° F WATER TEMPERATURE MAXIMUM UNLESS OTHERWISE NOTED.
24. PROVIDE HEAT TRACE IN LOCATIONS SHOWN, AS REQUIRED BY SPECIFICATIONS, AND TO THE FOLLOWING SYSTEMS WHEN EXPOSED TO FREEZING CONDITIONS:
- A. DOMESTIC COLD WATER
- B. DOMESTIC HOT WATER
- C. DOMESTIC HOT WATER REIRC
- D. SANITARY
- E. STORM
- ALL HEAT TRACED PIPE SHALL BE INSULATED PER SPECIFICATIONS. COORDINATE ALL HEAT TRACING AND REQUIRED CIRCUITS WITH ELECTRICAL DRAWINGS AND ELECTRICAL CONTRACTOR.
25. PROVIDE WATER HAMMER ARRESTORS FOR ALL FIXTURES/EQUIPMENT THAT HAVE QUICK CLOSING VALVES TO INCLUDE:
- A. WATER CLOSETS AND URINAL FLUSH VALVES
- B. ELECTRONIC FAUCETS
- C. REFRIGERATOR ICE MAKERS
- D. DISHWASHERS
- E. MECHANICAL MAKE-UP
26. REFER TO MECHANICAL PLANS FOR ALL EQUIPMENT REQUIRING MAKE-UP WATER. PROVIDE A REDUCED PRESSURE BACKFLOW FOR EACH REQUIRED LINE.
27. REFER TO LANDSCAPE PLANS FOR IRRIGATION REQUIREMENTS. WHEN AN IRRIGATION TAP IS REQUIRED OFF THE DOMESTIC WATER SERVICE, PROVIDE THE RECOMMENDED LINE SIZE WITH A REDUCED PRESSURE BACKFLOW PREVENTER.

PLUMBING LEGEND

(NOT ALL SYMBOLS LISTED BELOW ARE BEING USED IN THIS SET OF PLUMBING DRAWINGS)

SYMBOL	ABBR	DESCRIPTION	SYMBOL	ABBR	DESCRIPTION	SYMBOL	ABBR	DESCRIPTION
MEDICAL			FITTINGS:			SYMBOLS:		
	MA	MEDICAL AIR			ELBOW UP			SECTION NO.
	O	OXYGEN			ELBOW DOWN			SECTION VIEW SHEET NO.
	VAC	VACUUM			TEE UP			DETAIL DESIGNATION
	NO	NITROUS OXIDE			TEE DOWN			EQUIPMENT DESIGNATION
	G	NAT. GAS OUTLET			PIPE CAP OR PLUG			EQUIPMENT DESIGNATION
	O	OXYGEN OUTLET		GC	GAS COCK			EQUIPMENT DESIGNATION
	V	VACUUM OUTLET		CO	CLEANOUT PLUG			EQUIPMENT DESIGNATION
	MA	MEDICAL AIR OUTLET		HB WH	HOSE BIBB WALL HYDRANT			EQUIPMENT DESIGNATION
	MA	MED AIR OUTLET		VB	VACUUM BREAKER			EQUIPMENT DESIGNATION
SPRINKLER HEADS				RD	ROOF DRAIN			EQUIPMENT DESIGNATION
		EXISTING SPRINKLER HEAD TO REMAIN		OD	OVERFLOW ROOF DRAIN			EQUIPMENT DESIGNATION
		EXISTING SPRINKLER HEAD TO RELOCATED		DSN	DOWNSPOUT NOZZLE			EQUIPMENT DESIGNATION
		EXISTING SPRINKLER HEAD TO NEW LOCATION		SA	SHOCK ARRESTOR W/BALL VALVE			EQUIPMENT DESIGNATION
		NEW SPRINKLER HEAD TO MATCH EXISTING		FD	FLOOR DRAIN			EQUIPMENT DESIGNATION
PIPING:				AD	AREA DRAIN			EQUIPMENT DESIGNATION
	(E)	EXISTING PIPING		FCO	FLOOR CLEANOUT			EQUIPMENT DESIGNATION
	(E)	EXISTING PIPING TO BE REMOVED		GCO	GRADE CLEANOUT			EQUIPMENT DESIGNATION
	CW	DOMESTIC COLD WATER		WCO	WALL CLEANOUT			EQUIPMENT DESIGNATION
	HW	DOMESTIC HOT WATER		CO	CLEANOUT PLUG			EQUIPMENT DESIGNATION
	T	TEMPERED WATER		VTR	VENT THRU ROOF			EQUIPMENT DESIGNATION
	HWC	DOMESTIC HOT WATER CIRCULATING		GV	GATE VALVE			EQUIPMENT DESIGNATION
	SAN	SANITARY WASTE ABOVE FLOOR		OS&Y	OUTSIDE STEM AND YOKE			EQUIPMENT DESIGNATION
	SAN	SANITARY WASTE BELOW FLOOR		DV	DRAIN VALVE W/ HOSE END CONN.			EQUIPMENT DESIGNATION
	GW	GREASE WASTE BELOW FLOOR		BV	BALL VALVE W/ HOSE CONNECTION			EQUIPMENT DESIGNATION
	V	SANITARY VENT		CV	CHECK VALVE WITH FLOW DIRECTION			EQUIPMENT DESIGNATION
	ST	STORM PIPING ABOVE FLOOR		PRV	PRESSURE REDUCING VALVE			EQUIPMENT DESIGNATION
	ST	STORM PIPING BELOW FLOOR		SV	SOLENOID VALVE			EQUIPMENT DESIGNATION
	OD	STORM OVERFLOW ABOVE FLOOR		FCV	AUTO FLOW CONTROL VALVE W/ TEST PORT			EQUIPMENT DESIGNATION
	OD	STORM OVERFLOW BELOW FLOOR		CS	CIRCUIT SETTER			EQUIPMENT DESIGNATION
	G	NATURAL GAS		GLV	GLOBE VALVE (STRAIGHT PATTERN)			EQUIPMENT DESIGNATION
	F	FIRE		GLV	GLOBE VALVE (ANGLE PATTERN)			EQUIPMENT DESIGNATION
	DR	EQUIP. DRAIN		BV	BUTTERFLY VALVE			EQUIPMENT DESIGNATION
	A	COMPRESSED AIR		BV	BALL VALVE			EQUIPMENT DESIGNATION
		PIPE SIZE/ PIPE TYPE		TCV	AUTO TEMP CONTROL VALVE, 2-WAY			EQUIPMENT DESIGNATION
FITTINGS:				TCV	AUTO TEMP CONTROL VALVE, 3-WAY			EQUIPMENT DESIGNATION
	EJ	EXPANSION JOINT		PV	PLUG VALVE			EQUIPMENT DESIGNATION
	U	UNION		TPR	TEMP/PRESSURE RELIEF VALVE			EQUIPMENT DESIGNATION
		THERMOMETER W/THERMOWELL			VALVE IN RISER			EQUIPMENT DESIGNATION
	AV	AIR VENT		STR	STRAINER W/ BLOW-OFF & CAPPED HOSE, END CONNECTION			EQUIPMENT DESIGNATION
	FC	FLEXIBLE PIPE CONNECTOR			STEAM TRAP			EQUIPMENT DESIGNATION
	FS	FLOW SWITCH						
	PS	PRESSURE SWITCH						
	PG	PRESSURE GAUGE W/GAUGE COCK						

EQUIPMENT DESIGNATIONS



ALTRERRA east west partners
MOUNTAIN COMPANY

2305 Mount Werner Circle
Steamboat Springs, CO 80487

Gensler

1225 17th Street Suite 150
Denver, CO 80202
United States
Tel 303.595.8586
Fax 303.825.6823



DESIGNWORKSHOP

141 9th Street
PO Box 774943
Steamboat Springs, CO 80477
Tel 970.871.9494

1390 Lawrence Street Suite 100
Denver, CO 80204
Tel 303.623.5186



12499 West Colfax Ave.
Lakewood, CO 80215
United States
Tel 303.431.6100



14143 Denver West Pkwy Suite 300
Golden, CO
United States
Tel 303.421.6655

Date	Description
2021.05.19	BP3: PROMENADE - ISSUE FOR BID AND PERMIT

Seal / Signature



05/18/2021

Project Name

SSRC | BASE AREA IMPROVEMENTS

Project Number

003.7835.000

Description

PLUMBING LEGEND

Scale

1/8" = 1'-0"

1A-P0.000

PLUMBING FIXTURE SCHEDULE											
GENERAL NOTES: 1. PLUMBING DESIGN AND SIZES ARE BASED ON THE 2018 INTERNATIONAL PLUMBING CODE. 2. ALL EXPOSED PIPING SERVING PLUMBING FIXTURES THAT MAY BE USED FOR ADA PURPOSES SHALL HAVE TRAPS AND SUPPLIES INSULATED PER ADA REQUIREMENTS. 3. ALL FIXTURES ARE WHITE UNLESS OTHERWISE NOTED. 4. ALL PUBLIC ACCESS LAVATORY AND SINKS WILL HAVE AN ASSE 1070 APPROVED TEMPERING VALVE INSTALLED.											
CODE	FIXTURE	DESCRIPTION	MIN CW CONN	MIN HW CONN	MIN SAN CONN	MIN VENT CONN	MANUFACTURER	FIXTURE MODEL NUMBER	MANUFACTURER	FAUCET / FLUSH VALVE MODEL NUMBER	REMARKS
GH-1	GROUND HYDRANT	SELF DRAINING, FREEZELESS GROUND HYDRANT WITH BRASS BOX WITH DRAIN HOLE, VACUUM BREAKER, AND LOOSE KEY OPERATION.	3/4"	-	-	-	WOODFORD	Y95	-	-	ANTI-SIPHON, LOOSE KEY; AUTO DRAINING, ASSE 1052; COORDINATE STEM LENGTH WITH INSTALLATION LOCATION.
DWET-1	DOMESTIC WATER EXPANSION TANK	16" DIA. x 19" TALL FLOOR MOUNTED EXPANSION TANK WITH POLYPROPYLENE LINER AND DIAPHRAGM, 55 PSI FACTORY PRE-CHARGE; 14 GALLON WITH 0.64 ACCEPTANCE FACTOR.	3/4"	-	-	-	AMTROL	ST-30VC	-	-	-
AD-1	AREA DRAIN	TWO-STAGE AREA DRAIN; CAST IRON TOP BODY WITH 8" SQUARE NICKEL-BRONZE TOP; PERFORATED STAINLESS STEEL EXTENSION; CAST IRON BOTTOM BODY WITH FLASHING RING AND FLANGE, GRAVEL STOP, AND ALUMINUM DOME.	-	-	-	-	WADE	3358-1-DF-XNH	-	-	COORDINATE REQUIRED EXTENSIONS WITH INSTALLATION LOCATION PRIOR TO ORDERING, COORDINATE OUTLET SIZE WITH EACH LOCATION, RE: PLANS.
FD-1	FLOOR DRAIN	CAST IRON BODY FLOOR DRAIN WITH FLASHING CLAMP WITH WEEP HOLES; 5" ROUND, ADJUSTABLE, NICKEL-BRONZE TOP.	-	-	SEE PLANS	SEE PLANS	JAY R. SMITH	2005Y-A-NB	-	-	-
FS-1	FLOOR SINK	12-1/2" SQUARE x 8" DEEP CAST IRON BODY RECEPTOR WITH ACID RESISTANT COATED INTERIOR AND FLASHING CLAMP WITH WEEP HOLES; SECURED 1/2 GRATE.	-	-	SEE PLANS	SEE PLANS	JAY R. SMITH	3150Y-PDBS-12	-	-	-
HB-1	HOSE BIBB	WALL MOUNTED COLD WATER WALL FAUCET WITH METAL HANDLE, VACUUM BREAKER, AND 3/4" HOSE CONNECTION.	3/4"	-	-	-	WOODFORD	24	-	-	-
MSB-1	MOP SINK	24" x 24" x 10" MOLDED STONE MOP SERVICE BASIN WITH STAINLESS STEEL WALL GUARDS; WALL MOUNTED TWO HANDLE FAUCET WITH VACUUM BREAKER, PAIL HOOK, AND 3/4" HOSE THREAD OUTLET.	3/4"	3/4"	3"	2"	FIAT	MSB2424	FIAT	830AA	PROVIDE FIAT MODEL MSG2424 WALL GUARDS, 832AA HOSE AND BRACKET, AND 889CC MOP HANGER.
TG-1	TRAP GUARD	BUTYL RUBBER, QUAD CLOSE, TRAP SEAL DEVICE; ASSE 1072.	-	-	-	-	JAY R. SMITH	2692 SERIES	-	-	PROVIDE IN ALL FLOOR DRAINS AND FLOOR SINKS CONNECTED TO THE SANITARY WASTE SYSTEM.
WH-1	WALL HYDRANT	AUTOMATIC DRAINING, FREEZELESS, RECESSED BOX WALL HYDRANT WITH LOCKING BOX, LOOSE KEY HANDLE, AND INTEGRAL DUAL CHECK BACKFLOW PREVENTER.	3/4"	-	-	-	WOODFORD	B67	-	-	COORDINATE REQUIRED STEM LENGTH WITH WALL THICKNESS AT EACH INSTALLATION LOCATION.
EEW-1	EMERGENCY EYE WASH STATION	WALL MOUNTED EMERGENCY EYE WASH WITH MANUALLY FILLED 7 GALLON TANK CAPABLE OF FLOWING 0.4 GPM FOR 15 MINUTES.	-	-	-	-	BRADLEY	S19-921	-	-	-

SUMP PUMP SCHEDULE																
GENERAL NOTES: 1. PROVIDE CHECK VALVE AND SHUTOFF VALVE ON EACH PUMP. 2. PROVIDE PREMIUM EFFICIENCY MOTORS (RELANCE E+ OR EQUIVALENT) WITH MAGNETIC STARTER AND DRY CONTACTS. 3. ALL UNITS SHALL HAVE INTEGRAL DISCONNECT AND OVERCURRENT/SHORT CIRCUIT PROTECTION.										REMARK NOTES: A. PROVIDE POURED IN PLACE SUMP IN BOTTOM OF ELEVATOR SHAFT. B. PROVIDE TYPE 4X SIMPLEX CONTROL PANEL. C. PROVIDE STANDARD TETHERED FLOAT SWITCH.						
CODE	MANUFACTURER	MODEL NUMBER	SERVICE	TYPE	NO. OF PUMPS	FLOW (GPM)	PRESSURE (FT)	DISCHARGE (IN)	RPM	POWER(HP)	VOLT	ELECTRICAL				REMARKS
ESP-1	WEIL	1411	ELEVATOR SHAFT	SIMPLEX SUBMERSIBLE	1	50.00	20	2"	1750	0.5	460	3	3.40			

ELECTRIC WATER HEATER SCHEDULE													
GENERAL NOTES: 1. ROUTE ALL T&P VALVES TO APPROVED RECEPTORS.							REMARK NOTES: A. PROVIDE WITH IMMERSION THERMOSTATS WITH CONTACTORS. B. FOUR 15KW ELEMENTS OPERATING SIMULTANEOUSLY. C. SET TO 140°F DISCHARGE.						
CODE	MANUFACTURER	MODEL NUMBER	SERVICE	LOCATION	RECOVERY (GPH@100TR)	CAPACITY (GAL)	POWER(KW)	VOLT	PH	FLA	FUSE	DISC.	FEEDER
EW-H-1	BRADFORD WHITE	VR-150-60	ZAMBONI GARAGE	ZAMBONI GARAGE	246	150	60.00	480	3	72.00			
EW-H-2	BRADFORD WHITE	VR-150-60	ZAMBONI GARAGE	ZAMBONI GARAGE	246	150	60.00	480	3	72.00			

GREASE INTERCEPTOR SCHEDULE										
GENERAL NOTES: 1. GT-1 HAS INTREGRAL FLOW CONTROL 2. UNITS SHALL MEET ALL REQUIREMENTS OF LOCAL AUTHORITY HAVING JURISDICTION.						REMARK NOTES: A. PREFABBED, DESIGN LOAD H-20 TRAFFIC				
CODE	DESCRIPTION	SERVICE	MANUFACTURER	MODEL NUMBER	WEIGHT (LBS)	CAPACITY (GAL)	LENGTH (IN)	WIDTH (IN)	HEIGHT (IN)	REMARKS
GI-1	TWO-COMPARTMENT, PRECAST CONCRETE GREASE INTERCEPTOR	PLAZA F&B BUILDING	COPELAND	5000	51300.0	5000	252.0	96.0	84.0	A

2305 Mount Werner Circle
Steamboat Springs, CO 80487

Gensler

1225 17th Street
Suite 150
Denver, CO 80202
United States

Tel 303.595.8585
Fax 303.825.6823



141 9th Street
PO Box 774943
Steamboat Springs, CO 80477
Tel 970.871.9494



1390 Lawrence Street
Suite 100
Denver, CO 80204
Tel 303.623.5186




12499 West Colfax Ave.
Lakewood, CO 80215
United States
Tel 303.431.6100



14143 Denver West Pkwy
Suite 300
Golden, CO
United States
Tel 303.421.6655

△	Date	Description
-	2021.05.19	BP3: PROMENADE - ISSUE FOR BID AND PERMIT

Seal / Signature



05/18/2021

Project Name

SSRC | BASE AREA IMPROVEMENTS

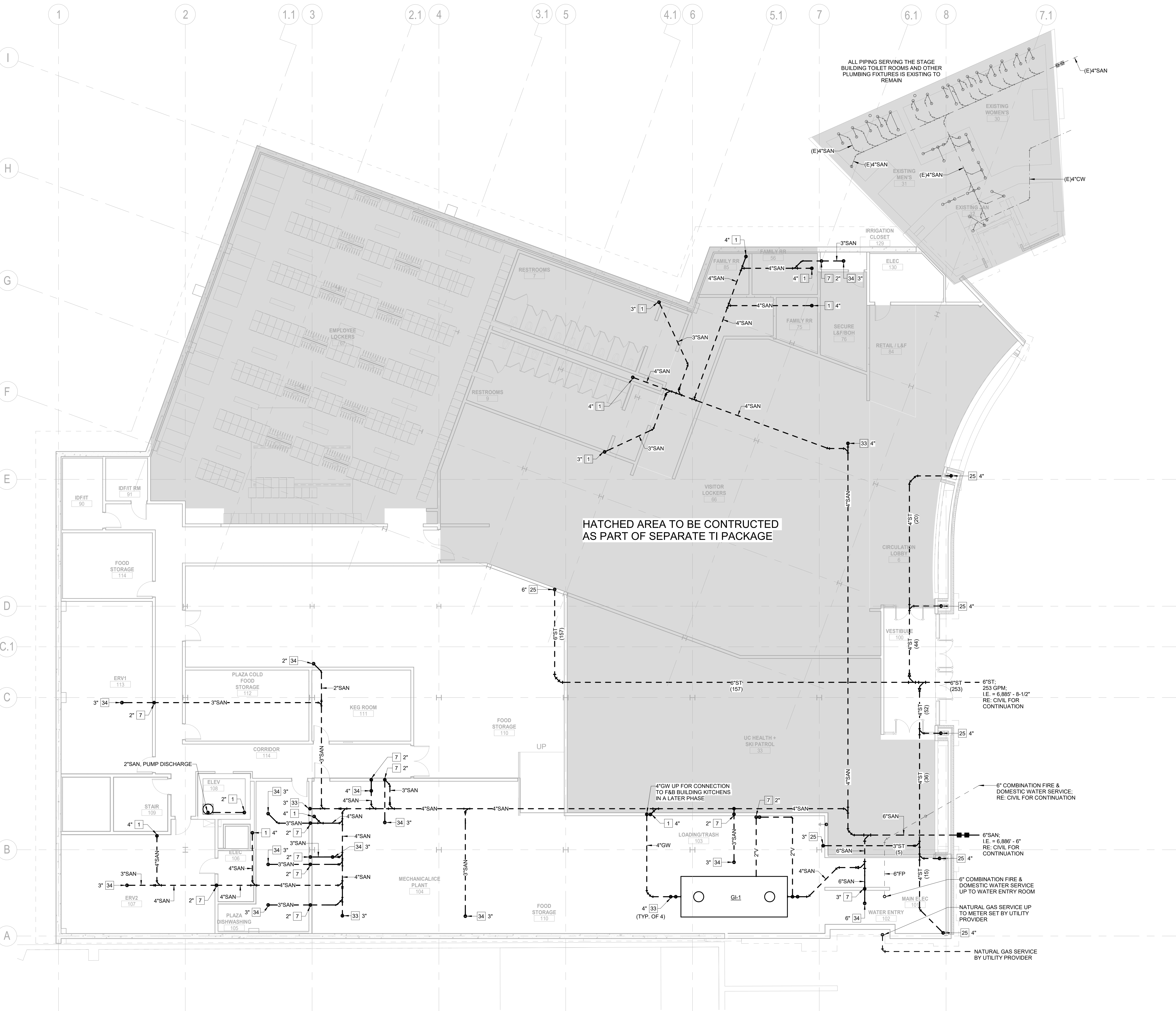
Project Number

003.7835.000

Description

PLUMBING SCHEDULES

Scale



GENERAL NOTES:

1. REQUIRED PIPE SIZES ARE SHOWN NEXT TO KEY NOTE.
2. PROVIDE BALL VALVE SHUTOFF AND 12"X12" ACCESS PANEL AT EACH SHOCK ABSORBER (SA). PANEL LOCATION TO BE VERIFIED AND COORDINATED WITH ARCHITECT.
3. ALL PIPING INSTALLED FOR FUTURE CONNECTION SHALL BE STUBBED UP MINIMUM 4" FOR FUTURE EXTENSION.
4. ALL INVERT ELEVATIONS (IE) SHALL BE FIELD VERIFIED BEFORE ANY PIPING IS INSTALLED.
5. ALL CIRCUIT SETTERS SHALL BE SET AT 1.0 GPM UNLESS NOTED OTHERWISE.

KEY NOTES:
(SOME KEY NOTES MAY NOT APPLY TO THIS SHEET)

- | | |
|----|--|
| 1 | SANITARY PIPING UP |
| 2 | SANITARY PIPING DN |
| 3 | SANITARY PIPING UP & DN |
| 4 | GW PIPING UP |
| 5 | GW PIPING DN |
| 6 | GW PIPING UP & DN |
| 7 | SANITARY VENT UP |
| 8 | SANITARY VENT DN |
| 9 | SANITARY VENT UP & DN |
| 10 | CW PIPING UP |
| 11 | CW PIPING DN |
| 12 | CW PIPING UP & DN |
| 13 | HW PIPING UP |
| 14 | HW PIPING DN |
| 15 | HW PIPING UP & DN |
| 16 | HWC PIPING UP |
| 17 | HWC PIPING DN |
| 18 | HWC PIPING UP & DN |
| 19 | CW & HW PIPING UP |
| 20 | CW & HW PIPING DN |
| 21 | CW & HW PIPING UP & DN |
| 22 | GAS PIPING UP |
| 23 | GAS PIPING DN |
| 24 | GAS PIPING UP & DN |
| 25 | STORM PIPING UP |
| 26 | STORM PIPING DN |
| 27 | STORM PIPING UP & DN |
| 28 | OVERFLOW PIPING UP |
| 29 | OVERFLOW PIPING DN |
| 30 | OVERFLOW PIPING UP & DN |
| 31 | OVERFLOW PIPING DOWN AND THRU WALL TO DOWNSPOUT NOZZLE 4"12" AFG |
| 32 | SANITARY PIPING UP TO PLUMBING FIXTURES |
| 33 | PIPING UP TO CLEANOUT |
| 34 | PIPING UP TO DRAIN |



ALTRERRA east west partners
MOUNTAIN COMPANY

2305 Mount Werner Circle
Steamboat Springs, CO 80487

Gensler

1225 17th Street Suite 150
Denver, CO 80202
United States
Tel 303.595.8585
Fax 303.825.6823



141 9th Street
PO Box 774943
Steamboat Springs, CO 80477
Tel 970.871.9494



12499 West Colfax Ave.
Lakewood, CO 80215
United States
Tel 303.431.6100



1390 Lawrence Street
Suite 100
Denver, CO 80204
Tel 303.623.5186



14143 Denver West Pkwy
Suite 300
Golden, CO
United States
Tel 303.421.6655

Date	Description
2021.05.19	BP3: PROMENADE - ISSUE FOR BID AND PERMIT

Seal / Signature



Project Name

SSRC | BASE AREA IMPROVEMENTS

Project Number

003.7835.000

Description

PROMENADE - PLUMBING UNDERGROUND PLAN - LEVEL 00

Scale

1/8" = 1'-0"

1A-P1.199

© 2018 Gensler

GENERAL NOTES:

1. REQUIRED PIPE SIZES ARE SHOWN NEXT TO KEY NOTE.
2. PROVIDE BALL VALVE SHUTOFF AND 12"X12" ACCESS PANEL AT EACH SHOCK ABSORBER (SA). PANEL LOCATION TO BE VERIFIED AND COORDINATED WITH ARCHITECT.
3. ALL PIPING INSTALLED FOR FUTURE CONNECTION SHALL BE STUBBED UP MINIMUM 18" FOR FUTURE EXTENSION.
4. ALL INVERT ELEVATIONS (E) SHALL BE FIELD VERIFIED BEFORE ANY PIPING IS INSTALLED.
5. ALL CIRCUIT SETTERS SHALL BE SET AT 1.0 GPM UNLESS NOTED OTHERWISE.

KEY NOTES:

(SOME KEY NOTES MAY NOT APPLY TO THIS SHEET)

- | | |
|----|--|
| 1 | SANITARY PIPING UP |
| 2 | SANITARY PIPING DN |
| 3 | SANITARY PIPING UP & DN |
| 4 | GW PIPING UP |
| 5 | GW PIPING DN |
| 6 | GW PIPING UP & DN |
| 7 | SANITARY VENT UP |
| 8 | SANITARY VENT DN |
| 9 | SANITARY VENT UP & DN |
| 10 | CW PIPING UP |
| 11 | CW PIPING DN |
| 12 | CW PIPING UP & DN |
| 13 | HW PIPING UP |
| 14 | HW PIPING DN |
| 15 | HW PIPING UP & DN |
| 16 | HWC PIPING UP |
| 17 | HWC PIPING DN |
| 18 | HWC PIPING UP & DN |
| 19 | CW & HW PIPING UP |
| 20 | CW & HW PIPING DN |
| 21 | CW & HW PIPING UP & DN |
| 22 | GAS PIPING UP |
| 23 | GAS PIPING DN |
| 24 | GAS PIPING UP & DN |
| 25 | STORM PIPING UP |
| 26 | STORM PIPING DN |
| 27 | STORM PIPING UP & DN |
| 28 | OVERFLOW PIPING UP |
| 29 | OVERFLOW PIPING DN |
| 30 | OVERFLOW PIPING UP & DN |
| 31 | OVERFLOW PIPING DOWN AND THRU WALL TO DOWNSPOUT NOZZLE 12" AFG |
| 32 | SANITARY PIPING UP TO PLUMBING FIXTURES |
| 33 | PIPING UP TO CLEANOUT |
| 34 | PIPING UP TO DRAIN |

Date	Description
2021.05.19	BP3: PROMENADE - ISSUE FOR BID AND PERMIT

Seal / Signature



Project Name
SSRC | BASE AREA IMPROVEMENTS

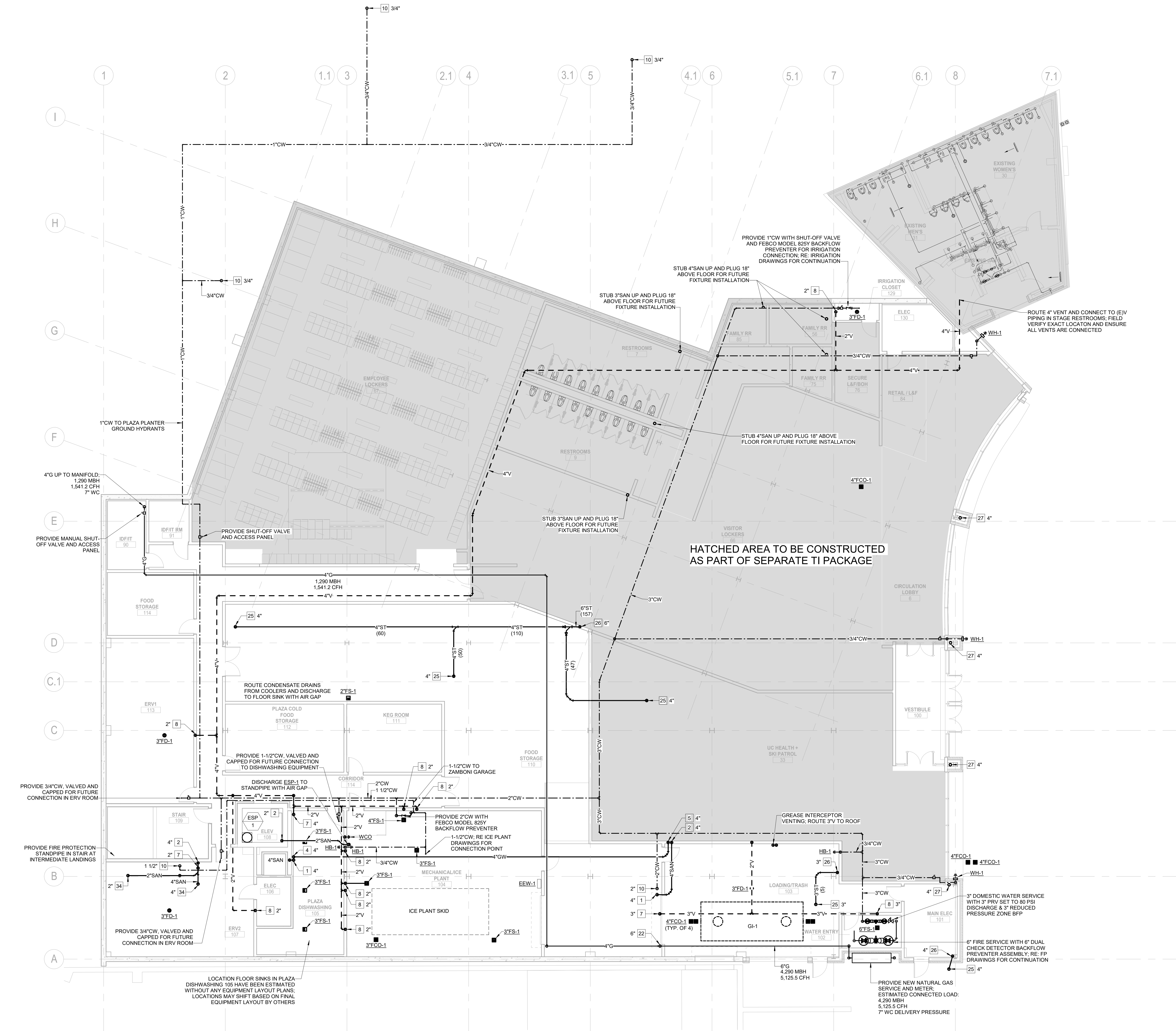
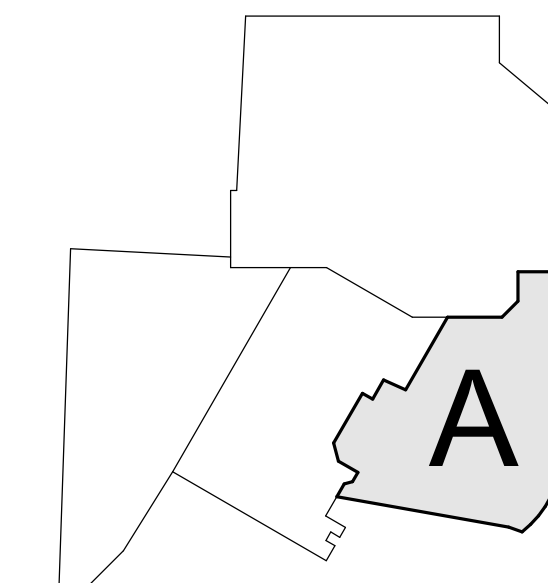
Project Number
003.7835.000

Description
PROMENADE - PLUMBING PLAN - LEVEL 00

Scale
1/8" = 1'-0"

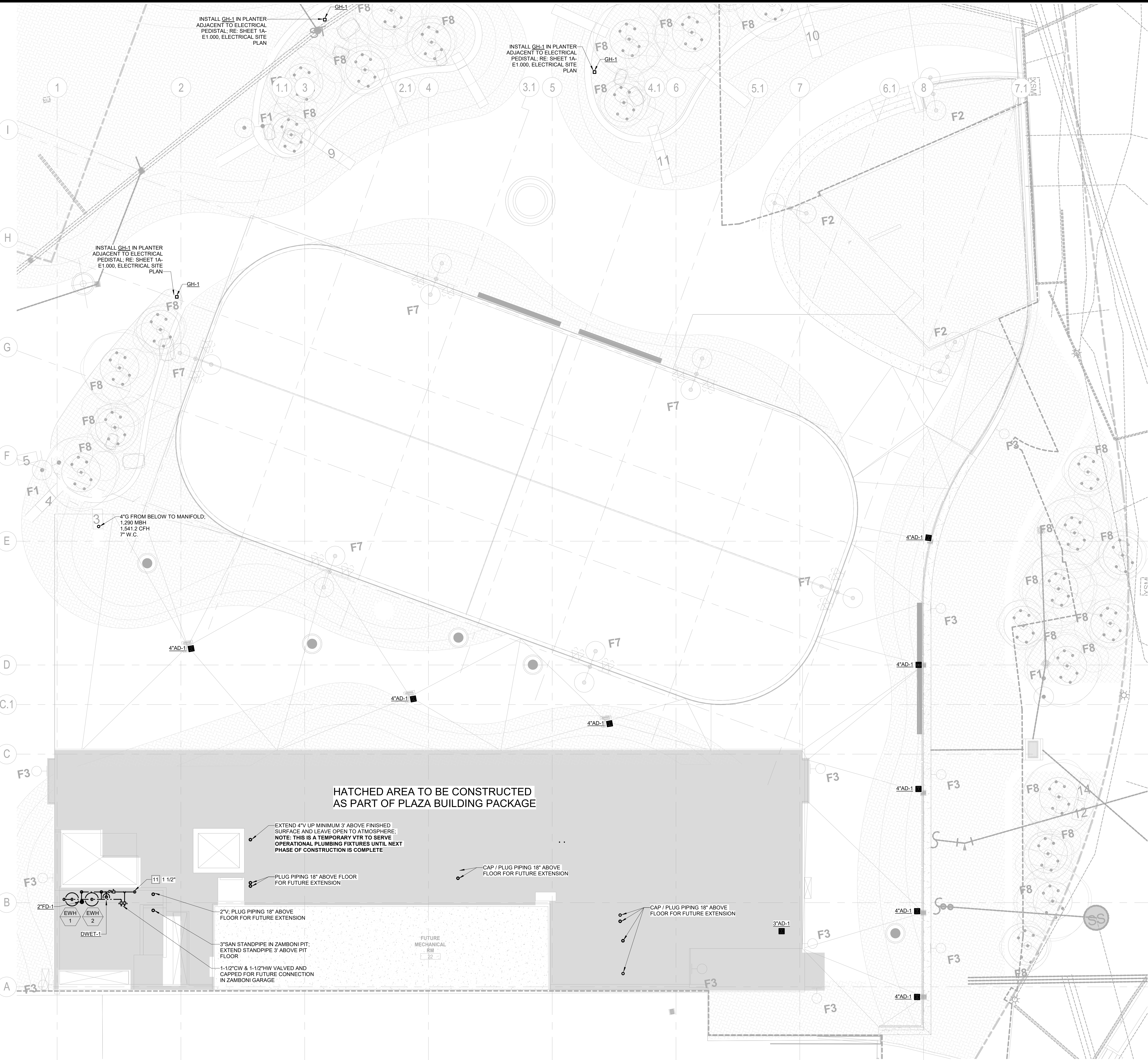
1A-P1.200

KEY PLAN



1 PLUMBING PLAN - LOWER LEVEL 00 PROMENADE

SCALE: 1/8" = 1'-0"



GENERAL NOTES:

1. REQUIRED PIPE SIZES ARE SHOWN NEXT TO KEY NOTE.

2. PROVIDE BALL VALVE SHUTOFF AND 12"X12" ACCESS PANEL AT EACH SHOCK ABSORBER (SA). PANEL LOCATION TO BE VERIFIED AND COORDINATED WITH ARCHITECT.

3. ALL PIPING INSTALLED FOR FUTURE CONNECTION SHALL BE STUBBED UP MINIMUM 4" FOR FUTURE EXTENSION.

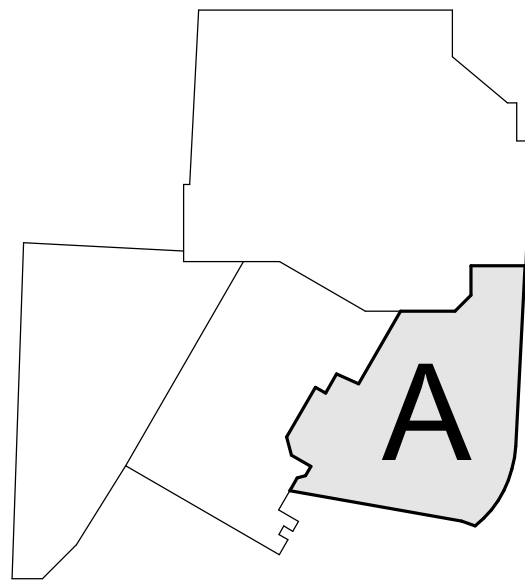
4. ALL INVERT ELEVATIONS (E) SHALL BE FIELD VERIFIED BEFORE ANY PIPING IS INSTALLED.

5. ALL CIRCUIT SETTERS SHALL BE SET AT 1.0 GPM UNLESS NOTED OTHERWISE.

KEY NOTES:
(SOME KEY NOTES MAY NOT APPLY TO THIS SHEET)

1	SANITARY PIPING UP
2	SANITARY PIPING DN
3	SANITARY PIPING UP & DN
4	GW PIPING UP
5	GW PIPING DN
6	GW PIPING UP & DN
7	SANITARY VENT UP
8	SANITARY VENT DN
9	SANITARY VENT UP & DN
10	CW PIPING UP
11	CW PIPING DN
12	CW PIPING UP & DN
13	HW PIPING UP
14	HW PIPING DN
15	HW PIPING UP & DN
16	HWC PIPING UP
17	HWC PIPING DN
18	HWC PIPING UP & DN
19	CW & HW PIPING UP
20	CW & HW PIPING DN
21	CW & HW PIPING UP & DN
22	GAS PIPING UP
23	GAS PIPING DN
24	GAS PIPING UP & DN
25	STORM PIPING UP
26	STORM PIPING DN
27	STORM PIPING UP & DN
28	OVERFLOW PIPING UP
29	OVERFLOW PIPING DN
30	OVERFLOW PIPING UP & DN
31	OVERFLOW PIPING DOWN AND THRU WALL TO DOWNSPOUT NOZZLE 4"12" AFG
32	SANITARY PIPING UP TO PLUMBING FIXTURES
33	PIPING UP TO CLEANOUT
34	PIPING UP TO DRAIN

KEY PLAN



Steamboat.
ALTRERRA east west partners
MOUNTAIN COMPANY

2305 Mount Werner Circle
Steamboat Springs, CO 80487

Gensler

1225 17th Street
Suite 150
Denver, CO 80202
United States

Tel 303.595.8585
Fax 303.825.6823

LANDMARK
CONSULTING, INC.

141 9th Street
PO Box 774943
Steamboat Springs, CO 80477
Tel 970.871.9494

DESIGNWORKSHOP

1390 Lawrence Street
Suite 100
Denver, CO 80204
Tel 303.623.5186

me
engineers

14143 Denver West Pkwy
Suite 300
Golden, CO 80621
United States
Tel 303.421.6655

Date	Description
2021.05.19	BP3: PROMENADE - ISSUE FOR BID AND PERMIT

Seal / Signature

05/18/2021

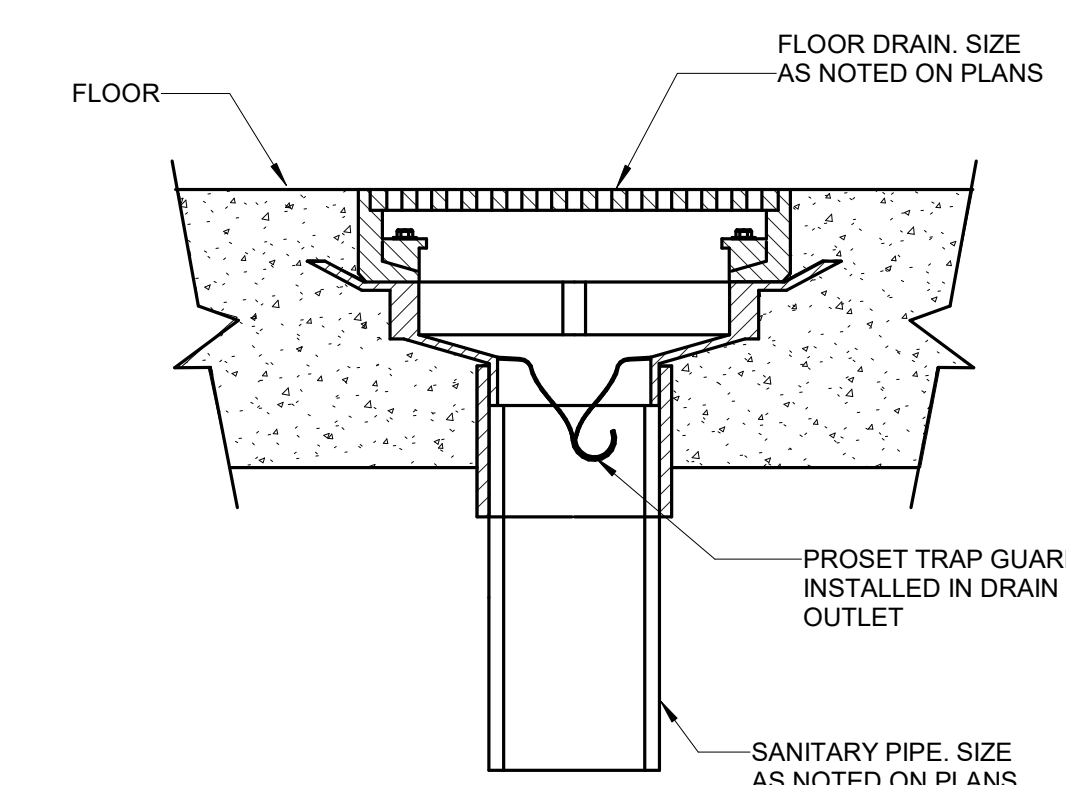
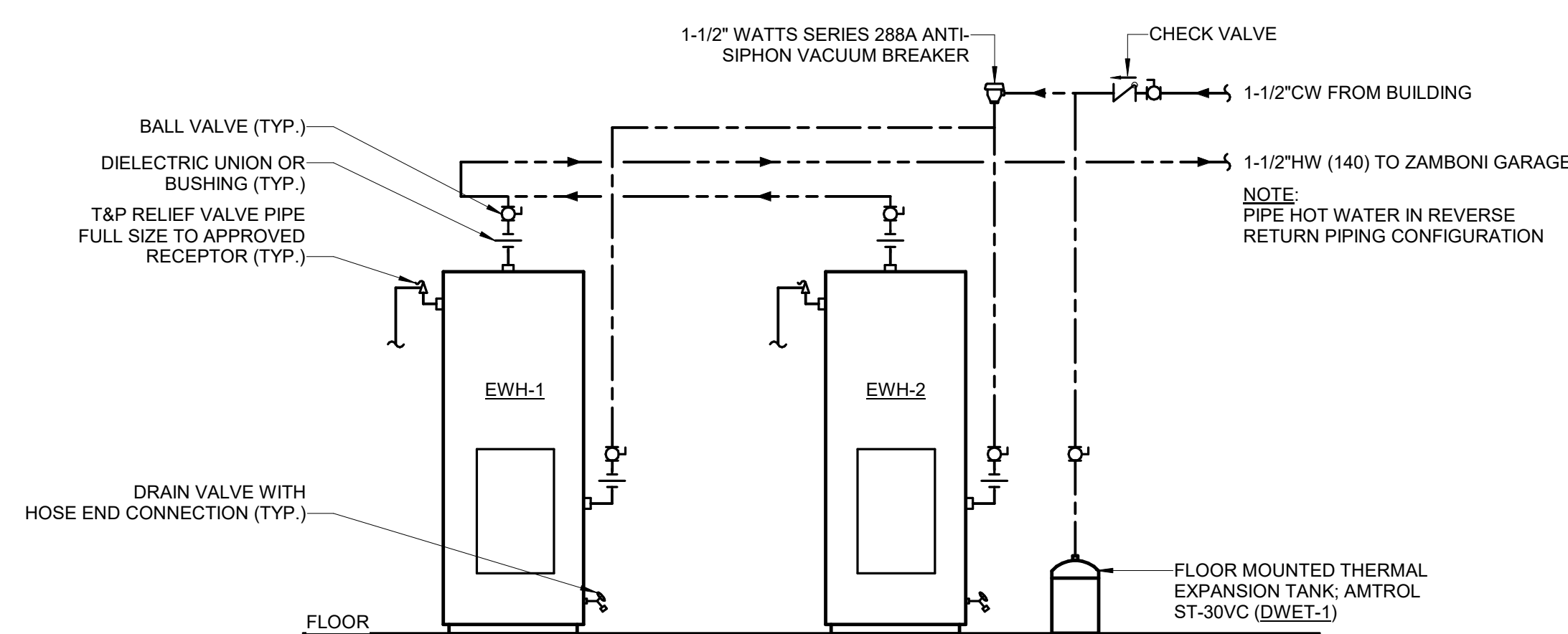
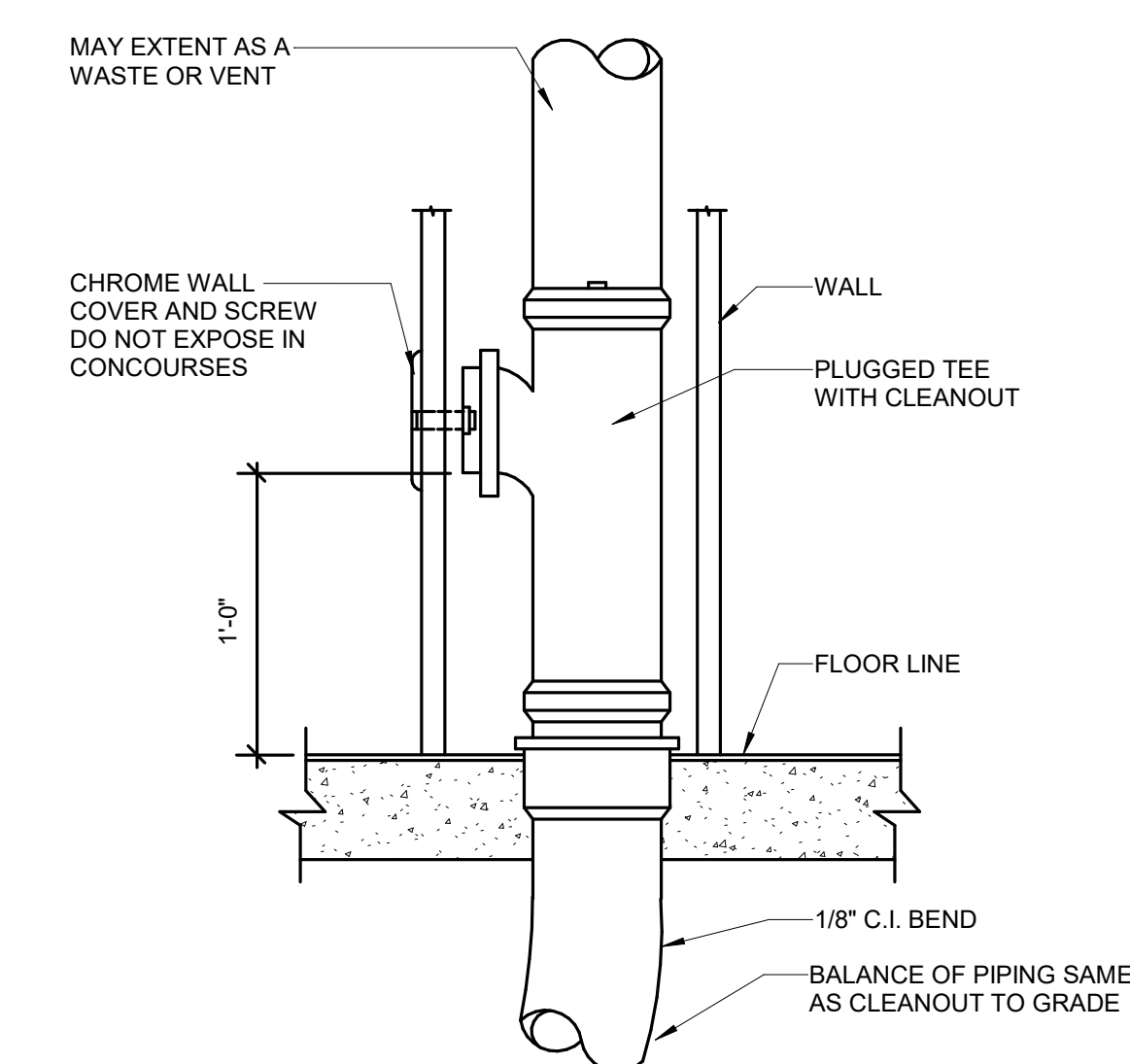
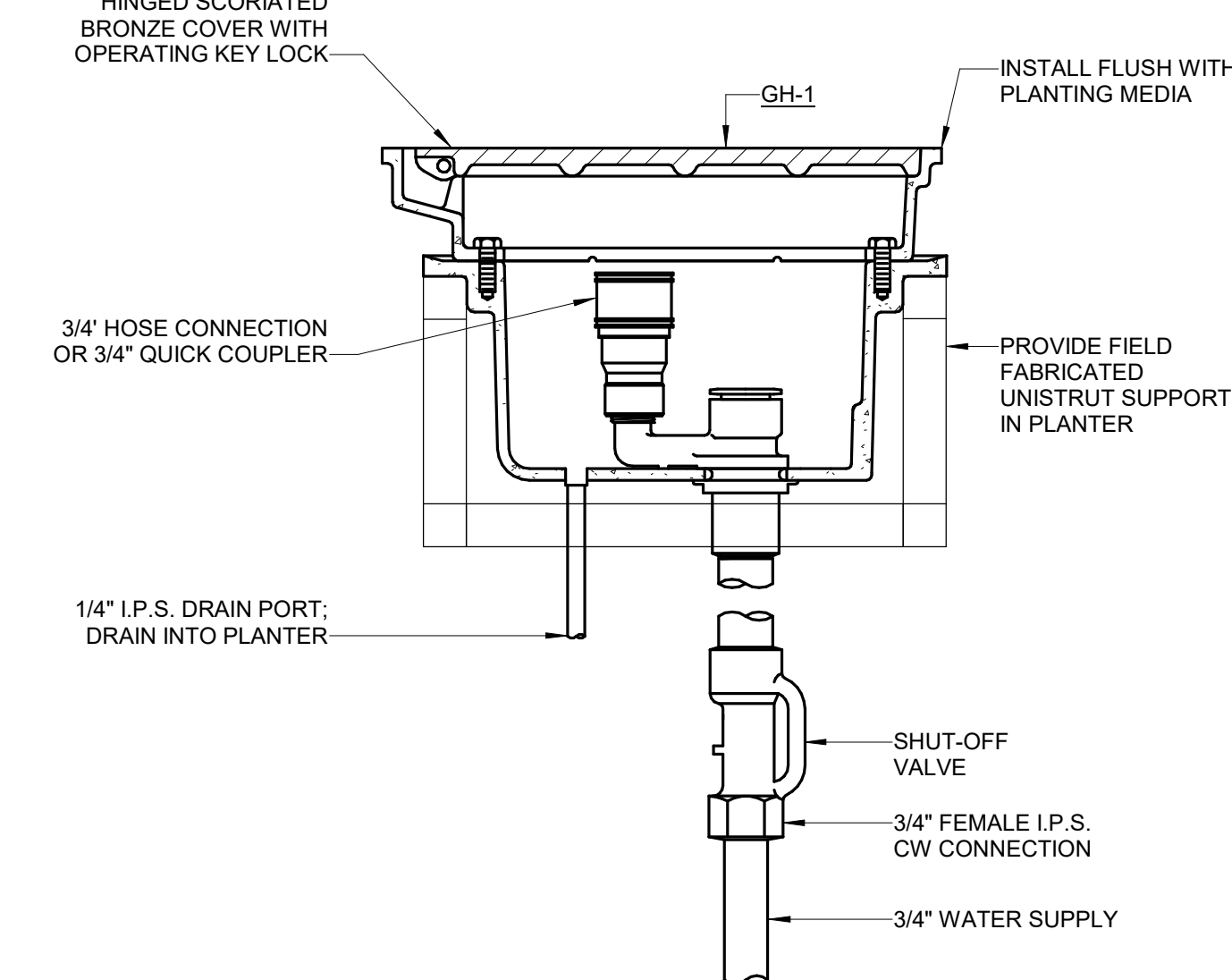
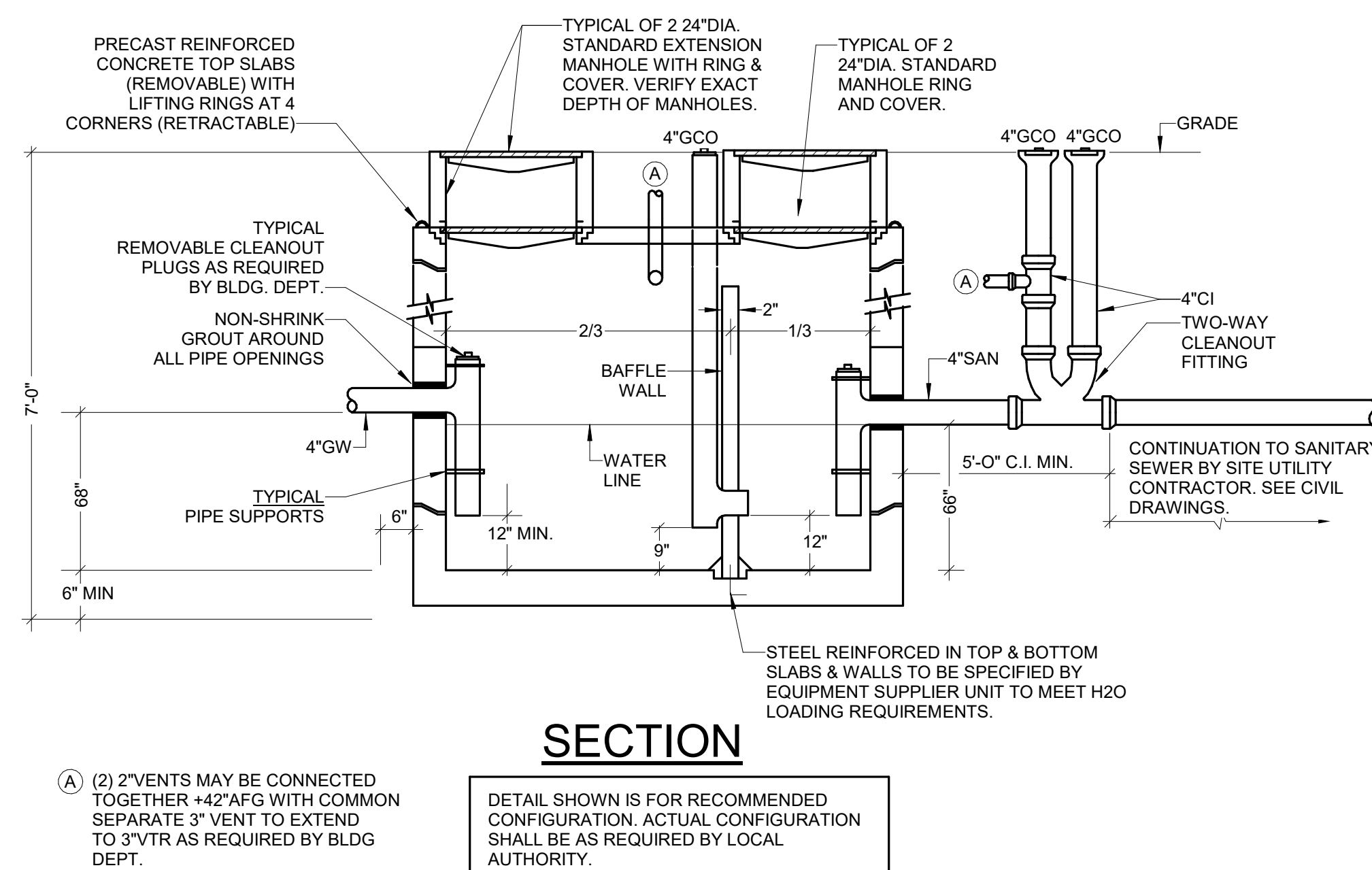
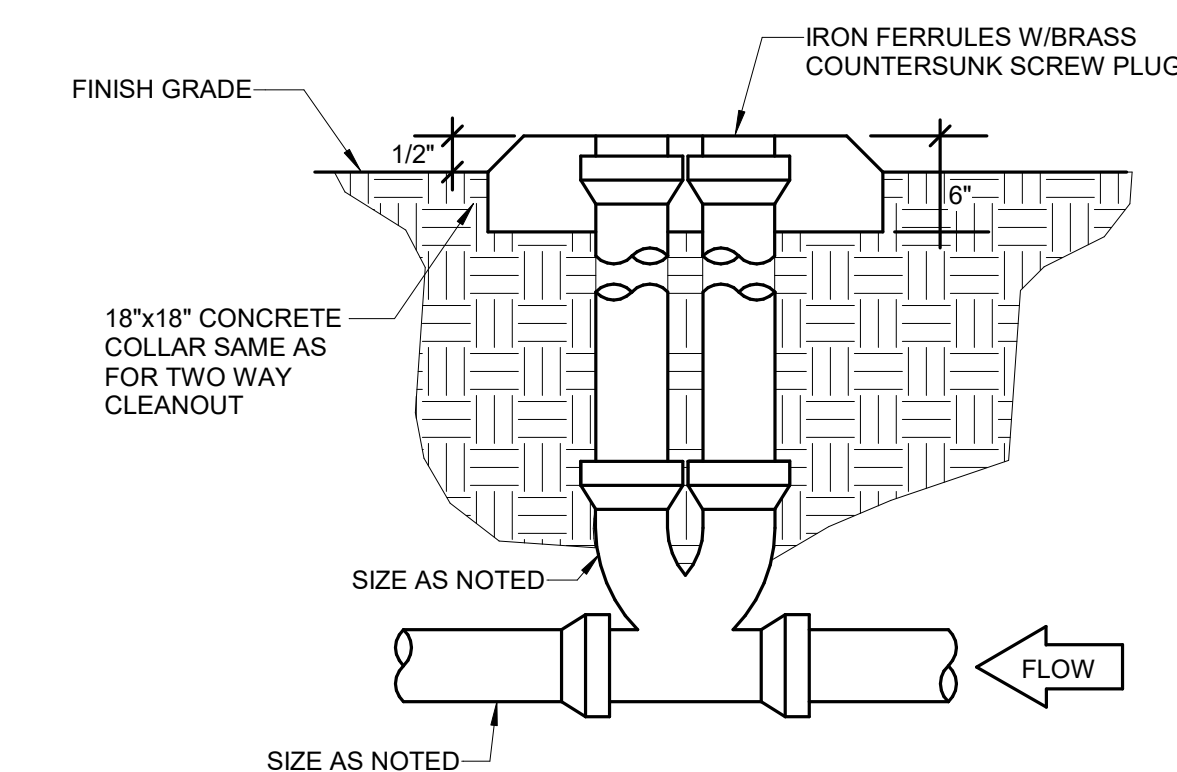
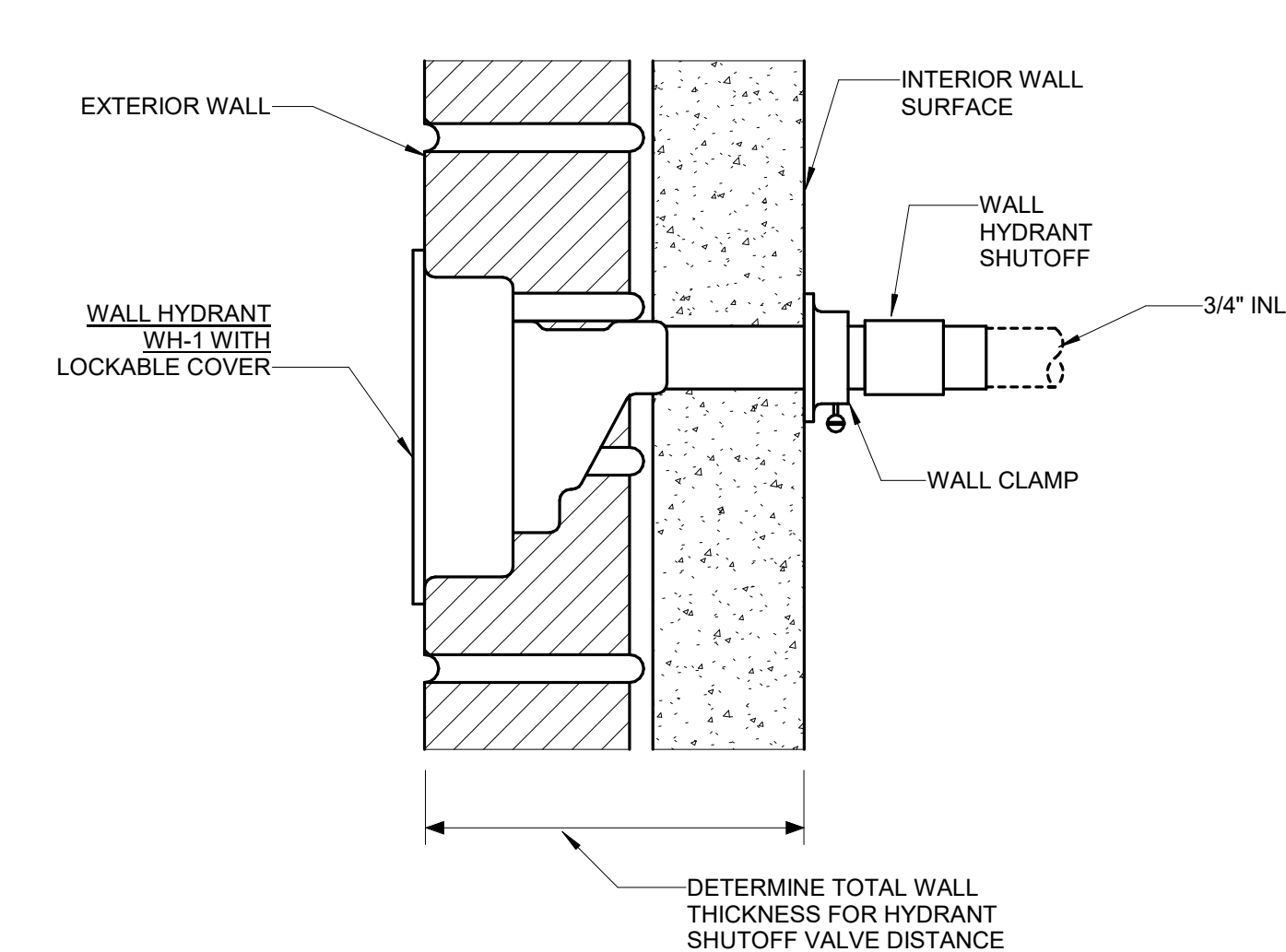
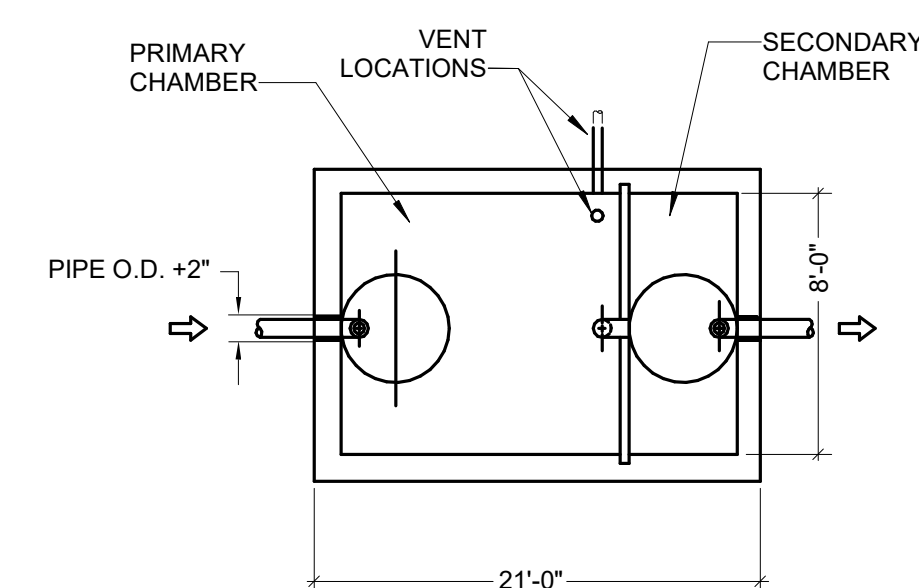
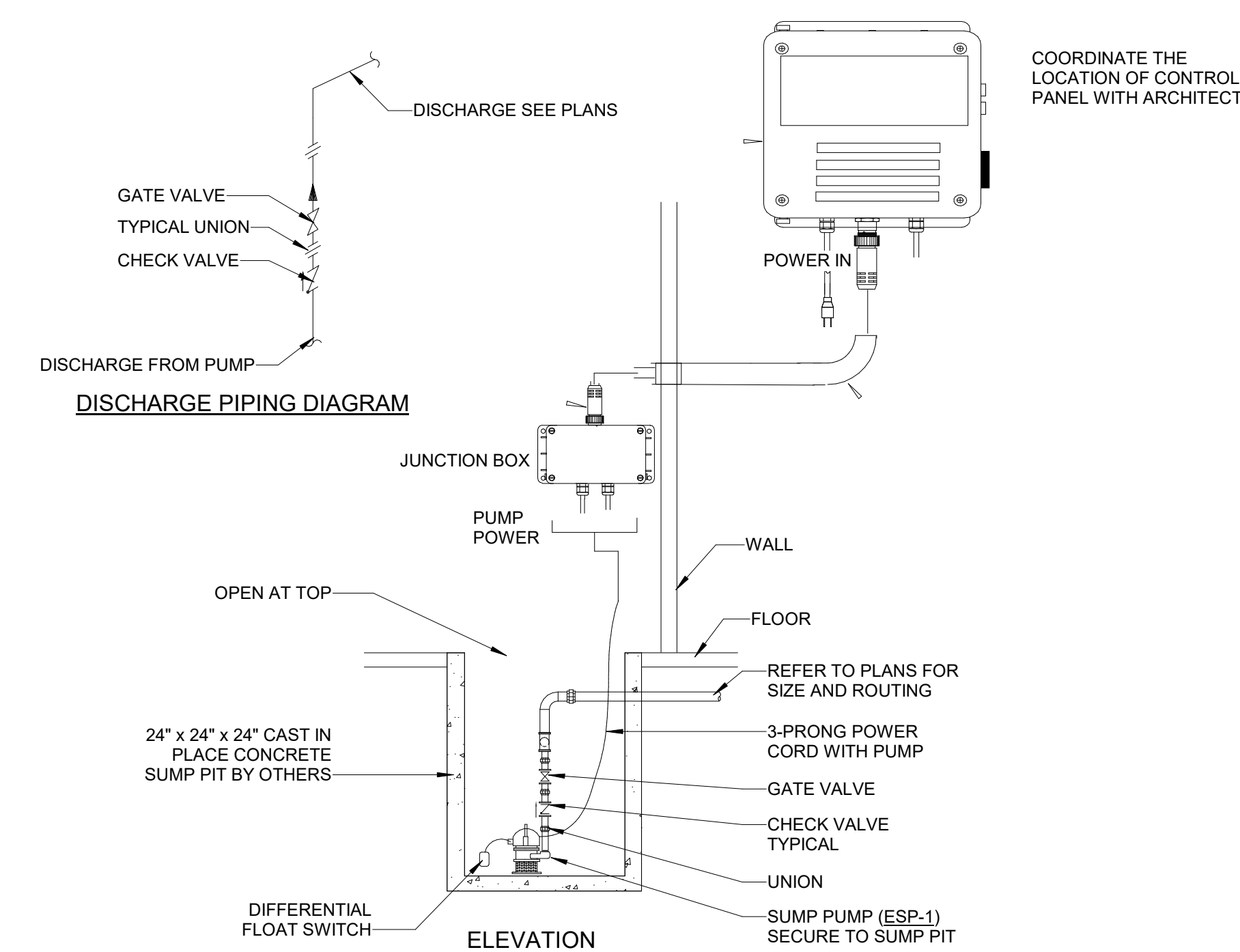
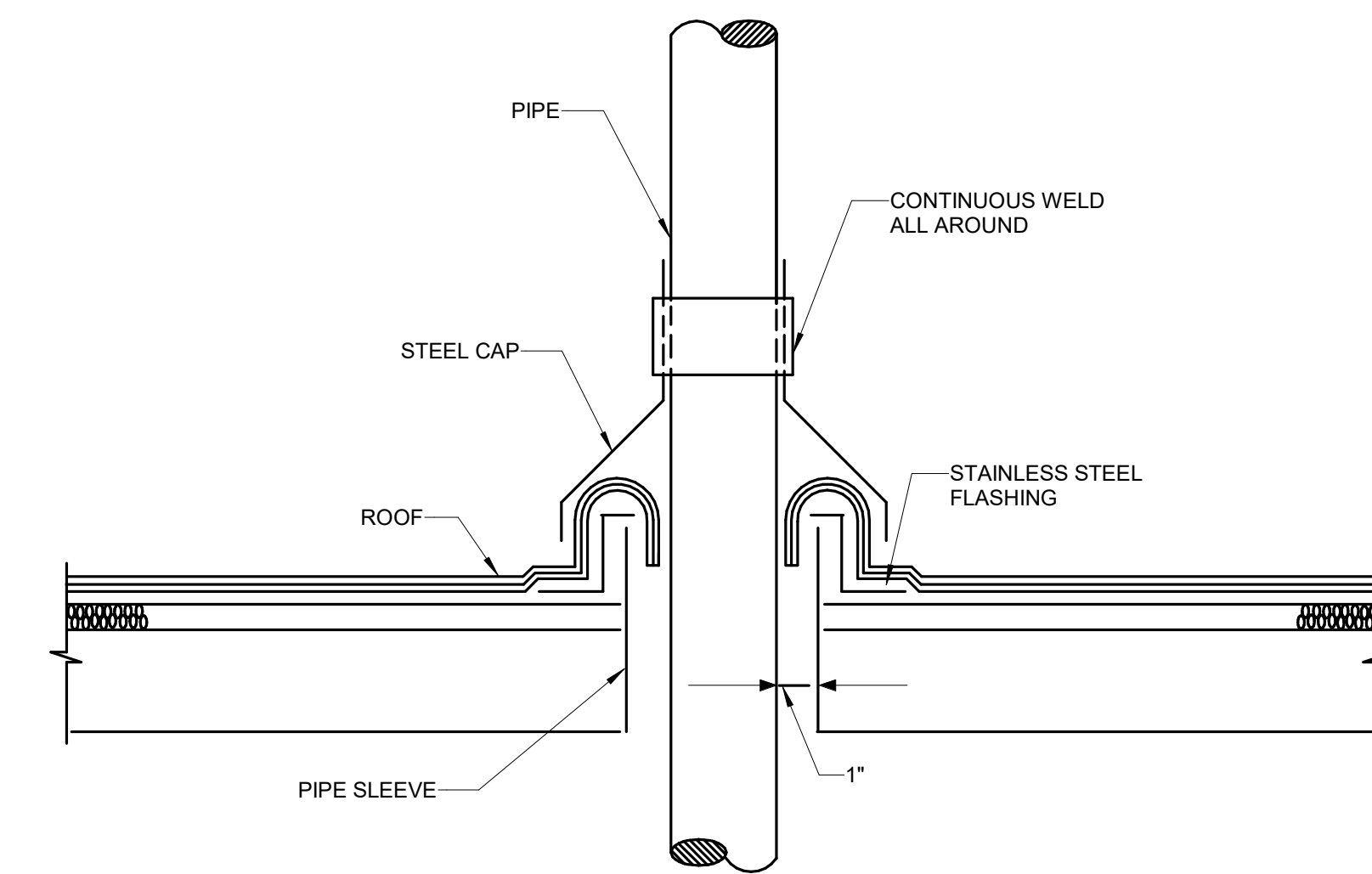
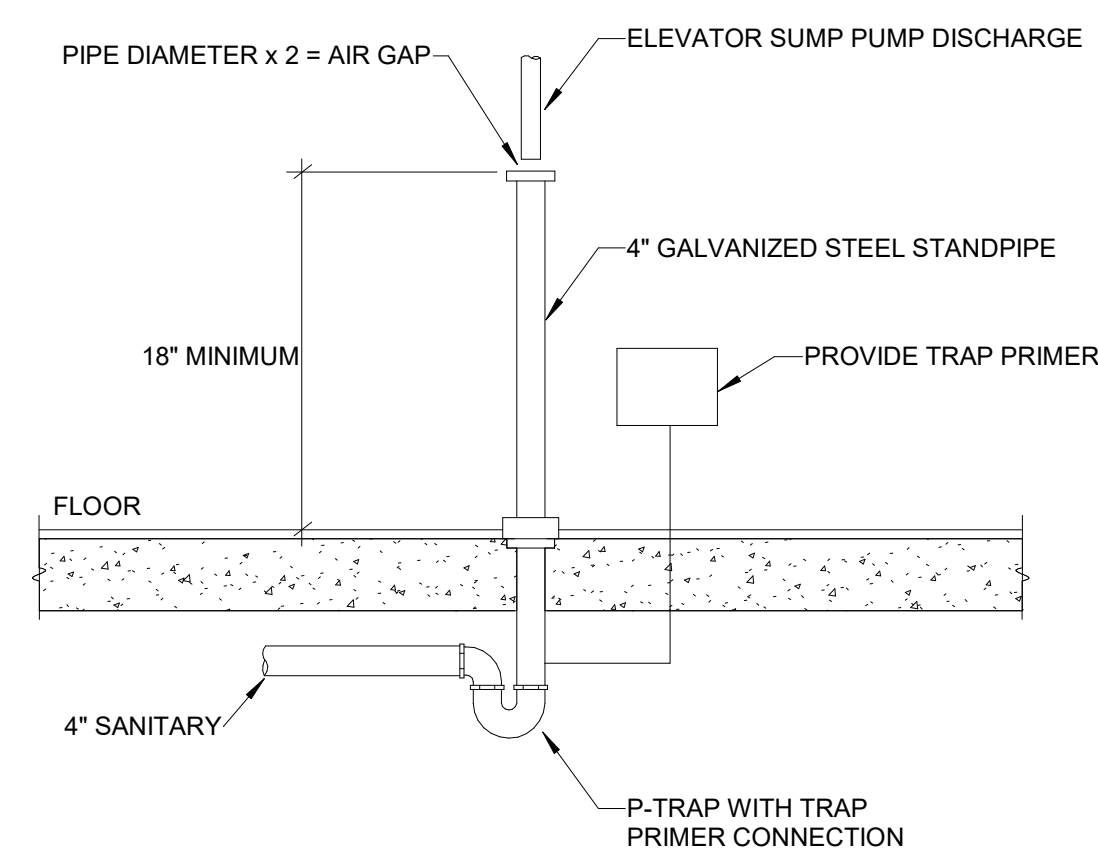
Project Name
SSRC | BASE AREA IMPROVEMENTS

Project Number
003.7835.000

Description
PROMENADE - PLUMBING PLAN - LEVEL 01

Scale
1/8" = 1'-0"

1A-P1.201



△ Date	Description
- 2021.05.19	BP3: PROMENADE - ISSUE FOR BID AND PERMIT

Seal / Signature



05/18/202

Project Name

SSRC | BASE AREA
IMPROVEMENTS

Project Number

003.7835.000

	Description
--	-------------

PLUMBING DETAILS

Scale

NO SCALE

1A-P8.000