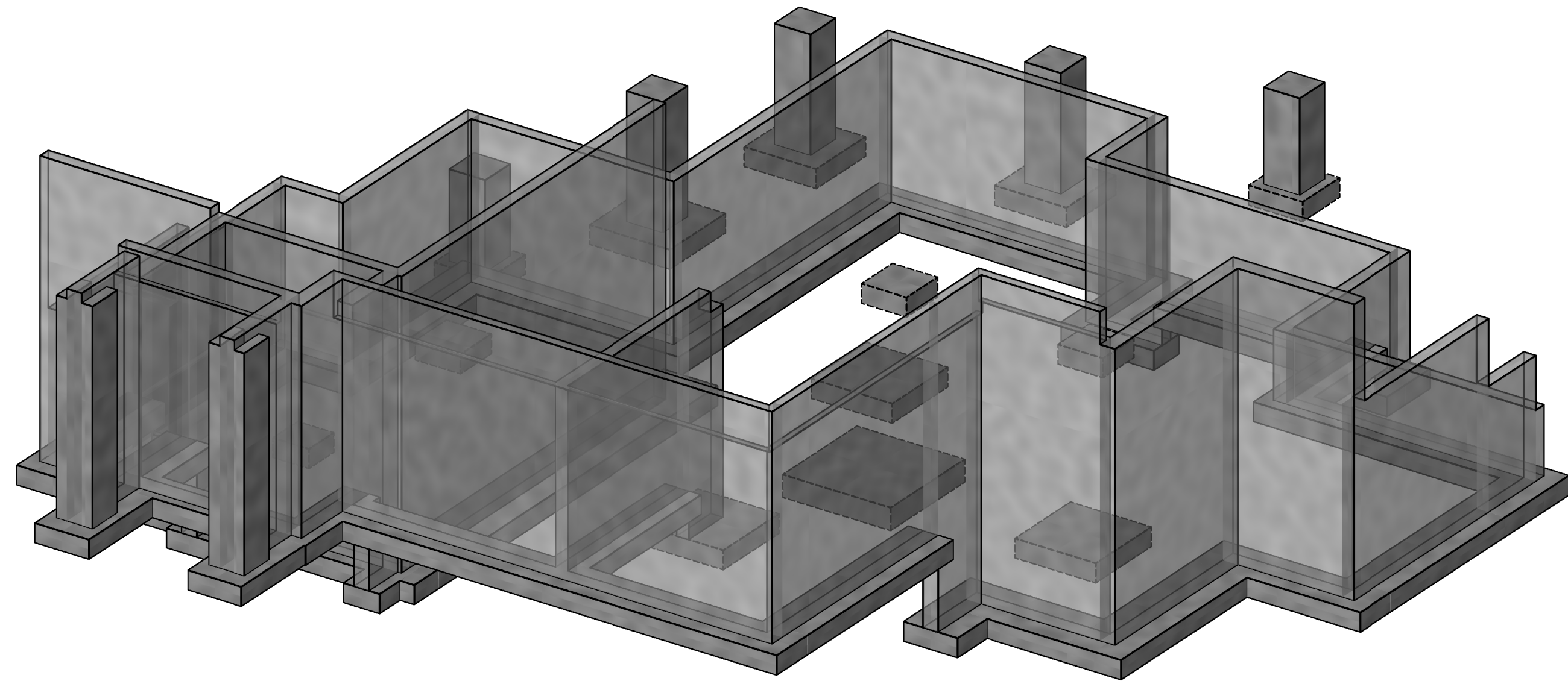




Copyright VERTICAL ARTS, INC.  
All Rights Reserved

This document, and the ideas and designs incorporated herein, as an instrument of professional service, is the property of Vertical Arts Inc. and is not to be used, in whole or in part, for any other project without the written authorization from a principal of Vertical Arts, Inc.



This diagram illustrates the exploded view of a multi-compartment display case. The assembly consists of several main components:
 

- Back Panel:** A large rectangular panel forming the rear of the structure.
- Side Panels:** Two panels that attach to the sides of the back panel.
- Front Panels:** Two panels that attach to the front of the side panels.
- Base:** A large rectangular base that supports the entire structure.
- Dividers:** Several vertical dividers of varying heights that create internal compartments.
- Accessories:** A set of small, rectangular blocks and a set of L-shaped corner braces that are used to secure the panels and dividers together.

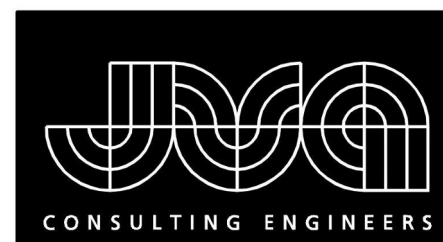
 The diagram shows the relative positions and alignment of these components, allowing for easy identification of parts and their assembly sequence.

CAMPBELL RESIDENCE  
Lot 5 - Eagle's Vista  
Steamboat Springs, CO 80487  
1907

[illegible]

3/13/2020 3:35:37 PM





JVA, Inc. 213 Linden Street, Suite 200  
Fort Collins, CO 80524 970.225.9099  
www.jvajva.com  
Boulder • Fort Collins • Winter Park  
Glenwood Springs • Denver  
JVA #19872



ARCHITECTURE  
PLANNING  
LANDSCAPE  
INTERIORS

Copyright VERTICAL ARTS, INC.  
All Rights Reserved

This document, and the ideas and designs  
incorporated herein, as an instrument of  
professional service, is the property of Vertical  
Arts Inc. and is not to be used, in whole or in part,  
for any other project without the written  
authorization from a principal of Vertical Arts, Inc.



CAMPBELL RESIDENCE  
Lot 5 - Eagle's Vista  
Steamboat Springs, CO 80487  
1907

ISSUE NAME	DATE
△ BUILDING PERMIT	08/23/2019
△ PERMIT RE-SUBMITTAL	10/2/19
△ VE REVISIONS	10/15/2019
△ FOUNDATION REVISIONS	03/13/2020

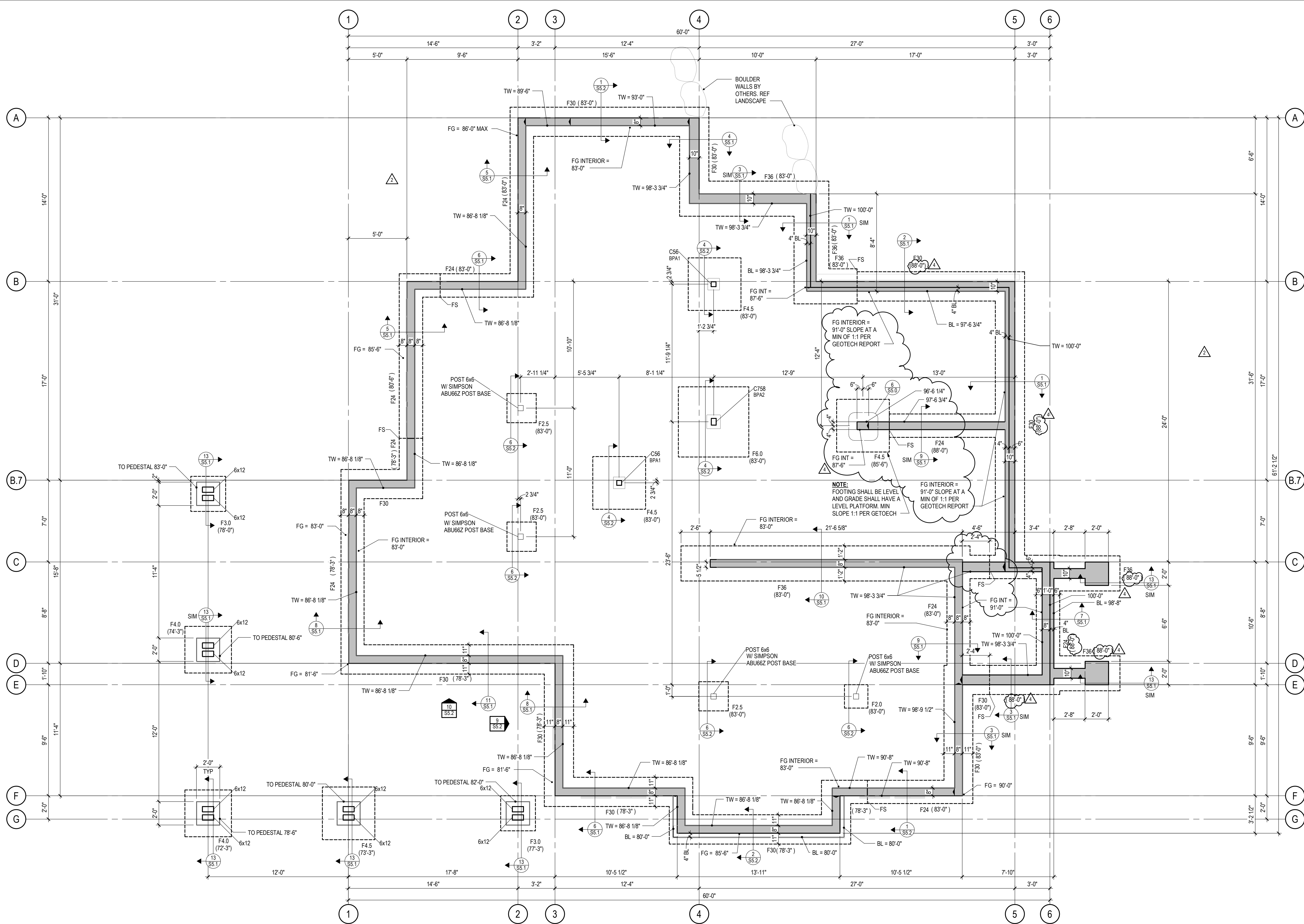
DRAWING TITLE

FOUNDATION PLAN

SHEET NO.

S2.1

3/13/2020 3:35:39 PM



FOOTING SCHEDULE				
MARK	WIDTH	LENGTH	THICKNESS	REINFORCING
F2.0	2'-0"	2'-0"	1'-0"	(3) #5 EACH WAY, BOTTOM
F2.5	2'-6"	2'-6"	1'-0"	(3) #5 EACH WAY, BOTTOM
F3.0	3'-0"	3'-0"	1'-0"	(4) #5 EACH WAY, BOTTOM
F4.0	4'-0"	4'-0"	1'-0"	(5) #5 EACH WAY, BOTTOM
F4.5	4'-6"	4'-6"	1'-0"	(5) #5 EACH WAY, BOTTOM
F6.0	6'-0"	6'-0"	1'-2"	(7) #5 EACH WAY, BOTTOM
F24	2'-0"	CONT	1'-0"	(3) #5 CONT, #5 @ 16" TRANSVERSE
F30	2'-6"	CONT	1'-0"	(3) #5 CONT, #5 @ 16" TRANSVERSE
F36	3'-0"	CONT	1'-0"	(4) #5 CONT, #5 @ 16" TRANSVERSE

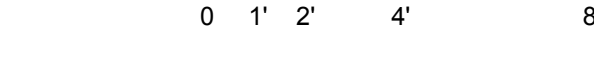
FOOTING NOTES:  
• CENTER FOOTINGS UNDER STEMWALLS, PILASTERS, & COLUMNS, TYPICAL UNLESS NOTED OTHERWISE  
• FOOTING WIDTHS SHALL NOT VARY IN THE FIELD FROM SIZE NOTED, OVERSIZE FOOTINGS ARE NOT ALLOWED  
• LAPPED BOARD FORMING NOT ALLOWED  
• TRENCH FORMING NOT ALLOWED

COLUMN SCHEDULE	
TYPICAL COLUMN MARKS: HSS COLUMN WALL THICKNESS IN 16ths OF AN INCH (EXAMPLE: '5' INDICATES 5/16" WALL THICKNESS, '10' INDICATES 5/8", ETC...)	
CXX OR CXXX SQUARE OR RECTANGULAR HSS COLUMN SIZE (EXAMPLE: '6' INDICATES HSS6x6, '75' INDICATES HSS7x5)	
STEEL COLUMN SCHEDULE	
MARK	SIZE
C44	HSS44X41/4
C54	HSS54X51/4
C56	HSS56X53/8
C758	HSS75X51/2
C1034	HSS103X31/4



FOUNDATION PLAN

1/4" = 1'-0"



• USGS ELEVATION 7059.50' = 100'-0" ARCH, TOP OF MAIN LEVEL INTERIOR FLOOR  
• LOCATION OF STEP BOTTOM OF WALL PER 13/5.0 NOTED THUS: FS  
• INTERIOR AND PERIMETER STEEL COLUMNS BEAR ON FOOTINGS, PEDESTALS, OR PILASTERS NOTED ON PLAN



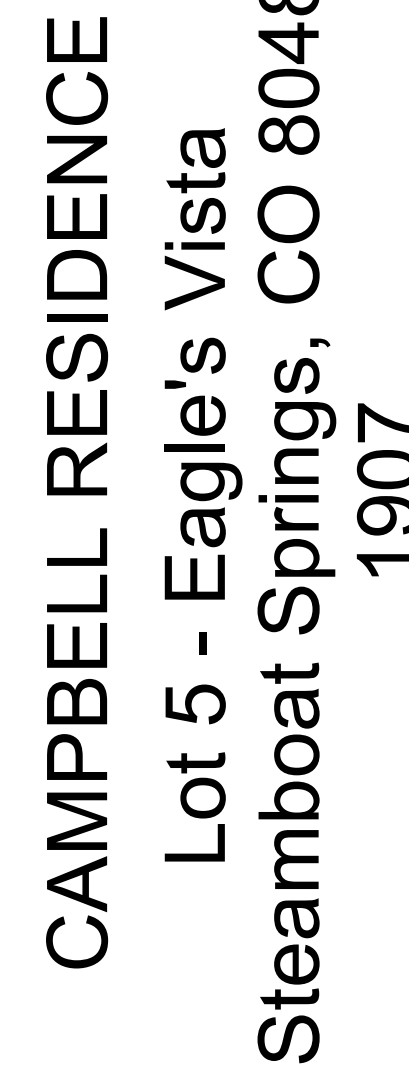


**JVA, Inc.** 213 Linden Street, Suite 200  
Fort Collins, CO 80524 970.225.9095  
**www.jvajva.com**  
Boulder • Fort Collins • Winter Park  
Glenwood Springs • Denver  
JVA #19872



Copyright VERTICAL ARTS, INC.  
All Rights Reserved

This document, and the ideas and designs incorporated herein, as an instrument of professional service, is the property of Vertical Arts Inc. and is not to be used, in whole or in part, for any other project without the written authorization from a principal of Vertical Arts, Inc.

[illegible]

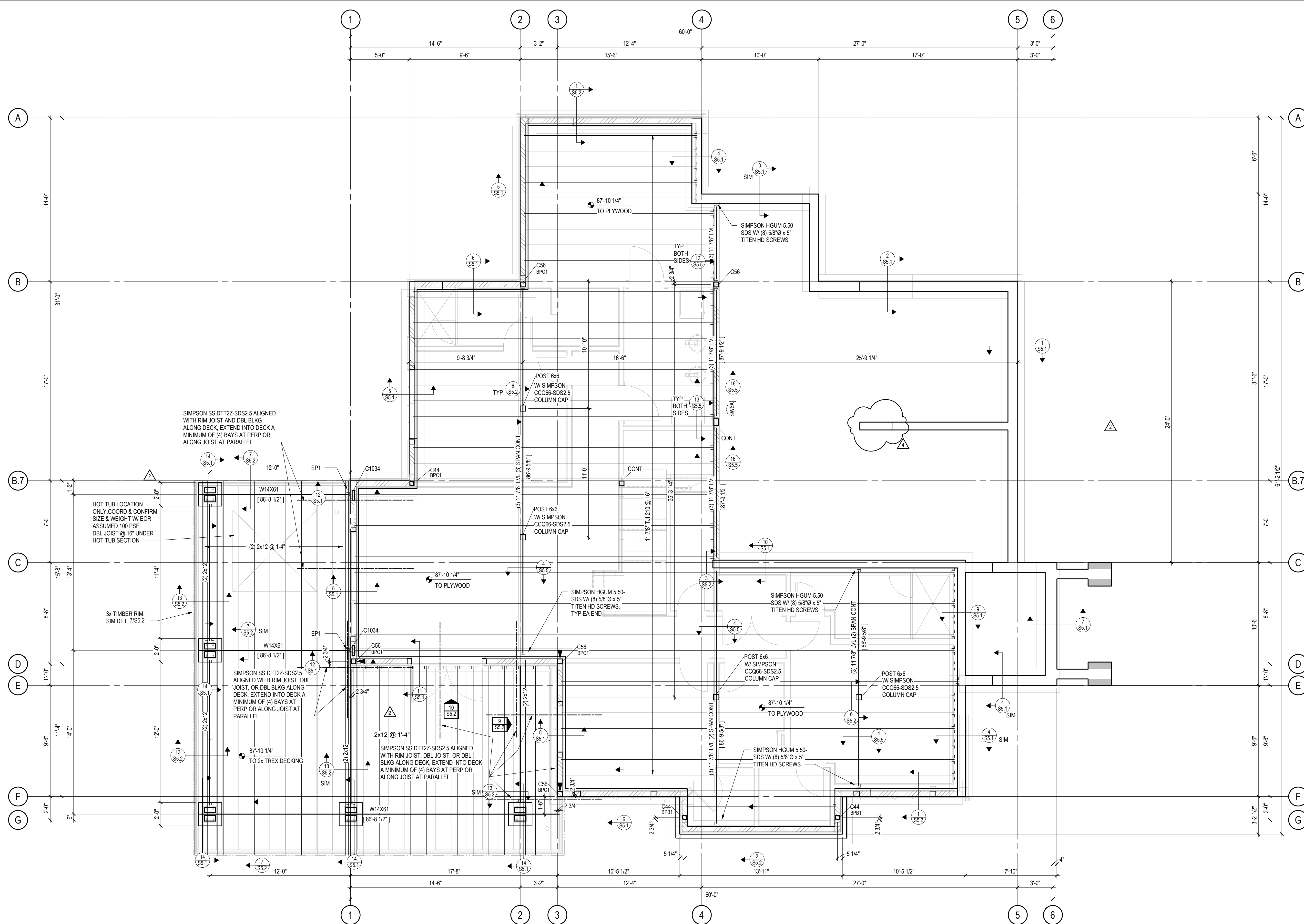
DRAWING TITLE

LOWER LEVEL  
FRAMING PLAN


SHEET NO.

**S2.2**







3/13/2020 3:35:43 PM



**HOLDOWNS:**

- HOLDOWNS ARE INDICATED ON PLAN THUS:  HDX
- HOLDOWNS INDICATED ARE LOCATED AT THE FLOOR LEVEL
- SEE HOLDOWN SCHEDULE ON SHEET S5.3

**TYPICAL WOOD FRAMED WALLS & WALL SHEATHING:**

- ALL EXTERIOR WALLS HATCHED THUS:  ARE  2x6 @ 16" STUDS  
EQUALLY WALLS SHEATHED WITH ZIP SYSTEM R-6 SHEATHING OR 2" SHEATHING (7/16" APA LAMINATED TO 1" RIGID INSULATION) NAILED WITH 10d SHANK (1"X31"x3") @ 6" AT PANEL EDGES AND 12" IN FIELD OF PANEL. BLOCK AND NAIL. ALL EDGES BETWEEN STUDS
- ALL INTERIOR WALLS HATCHED THUS:  ARE  2x4 @ 16" STUDS OR 2x6 @ 16" STUDS @ 15/32" APA NAILED WITH 8d COMMON (1"X31"x2") @ 6" AT PANEL EDGES AND 12" IN FIELD OF PANEL. BLOCK AND NAIL. ALL EDGES BETWEEN STUDS; EXPOSED SURFACE TO BE NAILED CAREFULLY FOR FINISHED APPEARANCE
- ALL INTERIOR WALLS HATCHED THUS:  W4 ARE 2x4 @ 16" STUD BEARING WALLS.  ARE 2x6 @ 16" STUD BEARING WALLS


**TYPICAL FLOOR SHEATHING:**  
3/4" STURD-I-FLOOR, APA RATED 24" O.C. TONGUE & GROOVE  
SHEATHING GLUED AND NAILED WITH 8d NAILS (0.113"Ø x 2 3/8")  
@ 6" ALONG PANEL EDGES AND @ 12" ALONG INTERMEDIATE  
FRAMING MEMBERS. LAY PANELS PERPENDICULAR TO  
FRAMING MEMBERS AND STAGGER PANEL JOINTS.



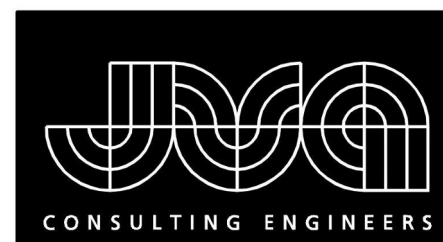
## LOWER LEVEL FRAMING PLAN

1/4" = 1'-0"



- USGS ELEVATION 7059.50' = 100'-0" DRAWING ELEVATION
- TOP OF FLOOR SHEATHING = 87'-10 1/4" UNLESS NOTED THUS:  XXX'-X"
- ALL BEAMS ARE FLUSH, UNLESS NOTED OTHERWISE ON PLAN
- ALL HEADERS ARE FLUSH, UNLESS NOTED OTHERWISE ON PLAN
- ALL COLUMNS ARE BELOW
- ALL EXTERIOR HEADERS ARE (3) 2x10 HEADERS UNLESS NOTED OTHERWISE ON PLAN
- ALL INTERIOR HEADERS ARE (3) 2x8 UNLESS NOTED OTHERWISE ON PLAN





JVA, Inc. 213 Linden Street, Suite 200  
Fort Collins, CO 80524 970.225.9099  
www.jvajva.com  
Boulder • Fort Collins • Winter Park  
Glenwood Springs • Denver  
JVA #19872



ARCHITECTURE  
PLANNING  
LANDSCAPE  
INTERIORS

Copyright VERTICAL ARTS, INC.  
All Rights Reserved

This document, and the ideas and designs  
incorporated herein, as an instrument of  
professional service, is the property of Vertical  
Arts Inc. and is not to be used, in whole or in part,  
for any other project without the written  
authorization from a principal of Vertical Arts, Inc.



CAMPBELL RESIDENCE  
Lot 5 - Eagle's Vista  
Steamboat Springs, CO 80487  
1907

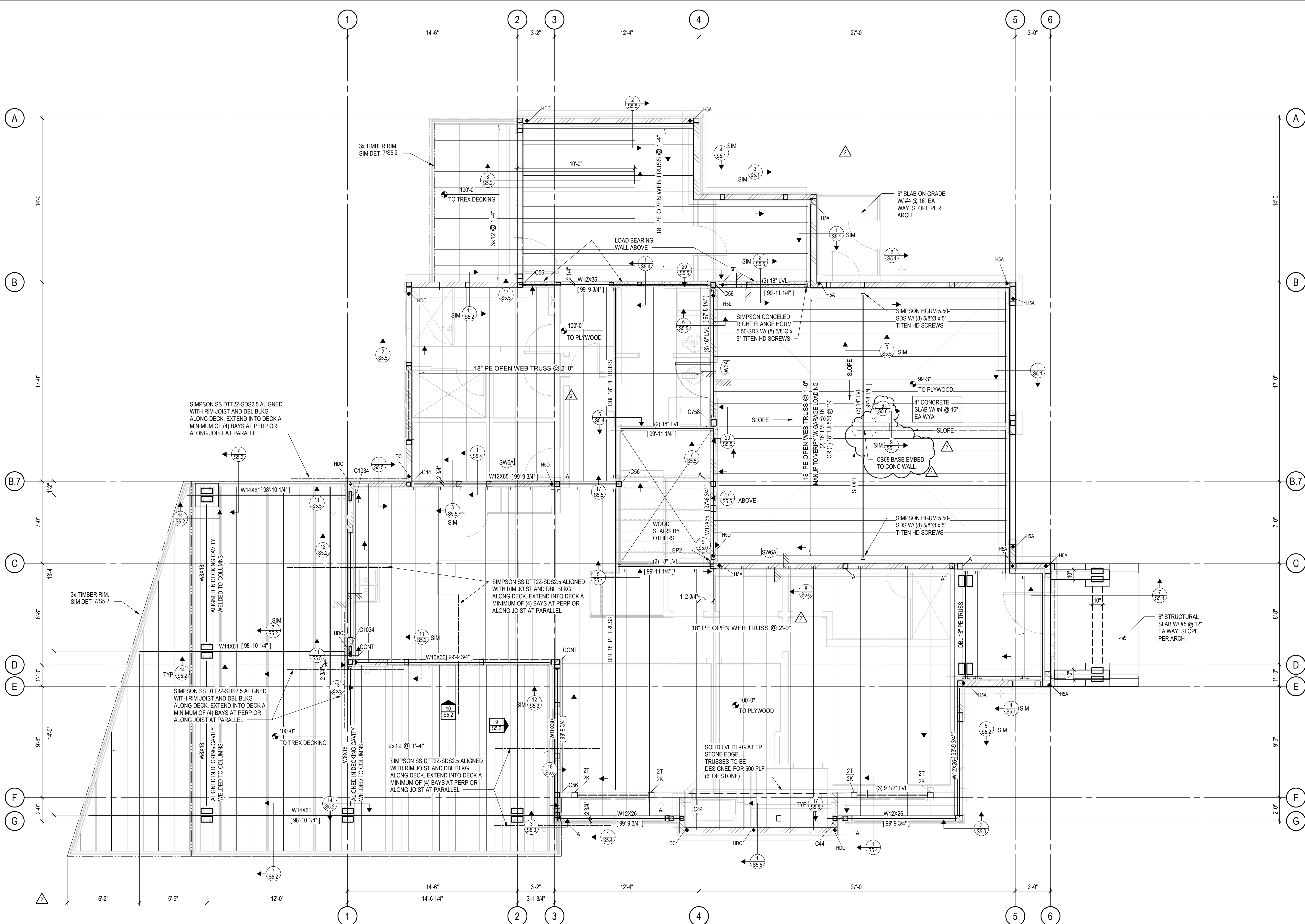
ISSUE NAME	DATE
BUILDING PERMIT	08/23/2019
VE REVISIONS	10/15/2019
FOUNDATION REVISIONS	03/13/2020

DRAWING TITLE  
MAIN LEVEL FLOOR  
FRAMING PLAN

SHEET NO.

S2.3

3/13/2020 3:35:49 PM



FLOOR TRUSS SUPPLIER NOTE:  
DESIGN ALL FLOOR TRUSSES TO CLEAR SPAN TO  
BEARING WALLS/ BEAMS INDICATED ON PLAN.  
DESIGN LOADS ARE AS FOLLOWS:  
DEAD LOAD BOTTOM CHORD = 10 PSF  
DEAD LOAD TOP CHORD = 15 PSF  
LIVE LOAD TOP CHORD = 40 PSF  
GARAGE DEAD LOAD TOP CHORD = 65 PSF  
GARAGE LIVE LOAD TOP CHORD = 40 PSF  
GARAGE LIVE LOAD POINT LOAD = 3000 LB  
LIMIT DEFLECTION TO:  
SPAN/480 FOR LIVE LOAD  
SPAN/360 (LIMIT TO 1\"/>

ALL TRUSS-TO-TRUSS CONNECTIONS TO BE DESIGNED AND SUPPLIED BY TRUSS  
MANUFACTURER. SEE DET SHIT S5.4 FOR REFERENCE. TRUSS FABRICATOR SHALL  
SUBMIT SHOP DRAWINGS AND CALCULATIONS STAMPED BY A COLORADO  
REGISTERED ENGINEER TO ARCHITECT FOR REVIEW BEFORE FABRICATION.

DO NOT ALTER TRUSS LAYOUT. BEARING DESIGN SHALL ASSUME HEM FIR WALL  
TOP PLATES (40S ps). USE MULTIPLE PILES, BEARING BLOCKS, OR BEARING  
ENHANCERS TO ACCOMMODATE 5-12\"/>

HOLD-DOWNS:  
• HOLD-DOWNS ARE INDICATED ON PLAN THUS:  
• HOLD-DOWNS INDICATED ARE LOCATED AT THE FLOOR LEVEL  
• SEE HOLD-DOWN SCHEDULE ON SHEET S5.3

TYPICAL WOOD FRAMED WALLS & WALL SHEATHING:  
• ALL EXTERIOR WALLS HATCHED THUS: ARE [SW6] 2x6 @ 16\"/>

TYPICAL FLOOR SHEATHING:  
3/4\"/>

TYPICAL HEADERS AND TRIM / KING STUDS:  
• PROVIDE (3) 2x10 HEADERS WITH (2) KING STUDS (2K) AND (1)  
TRIM STUD (1T) AT ALL WOOD OPENINGS, TYP UNO  
• AT OPENINGS EQUAL TO OR SMALLER THAN 3'-0\"/>

KX  
XT  
INDICATES NUMBER OF 2x KING STUDS T INDICATES  
NUMBER OF 2x TRIM STUDS (EQUAL TO WALL STUD WIDTH)  
XX  
INDICATES NUMBER OF 2x6 STUDS IN A STUDPACK  
XXX  
INDICATES NUMBER OF 2x8 STUDS IN A STUDPACK



MAIN LEVEL FLOOR FRAMING PLAN

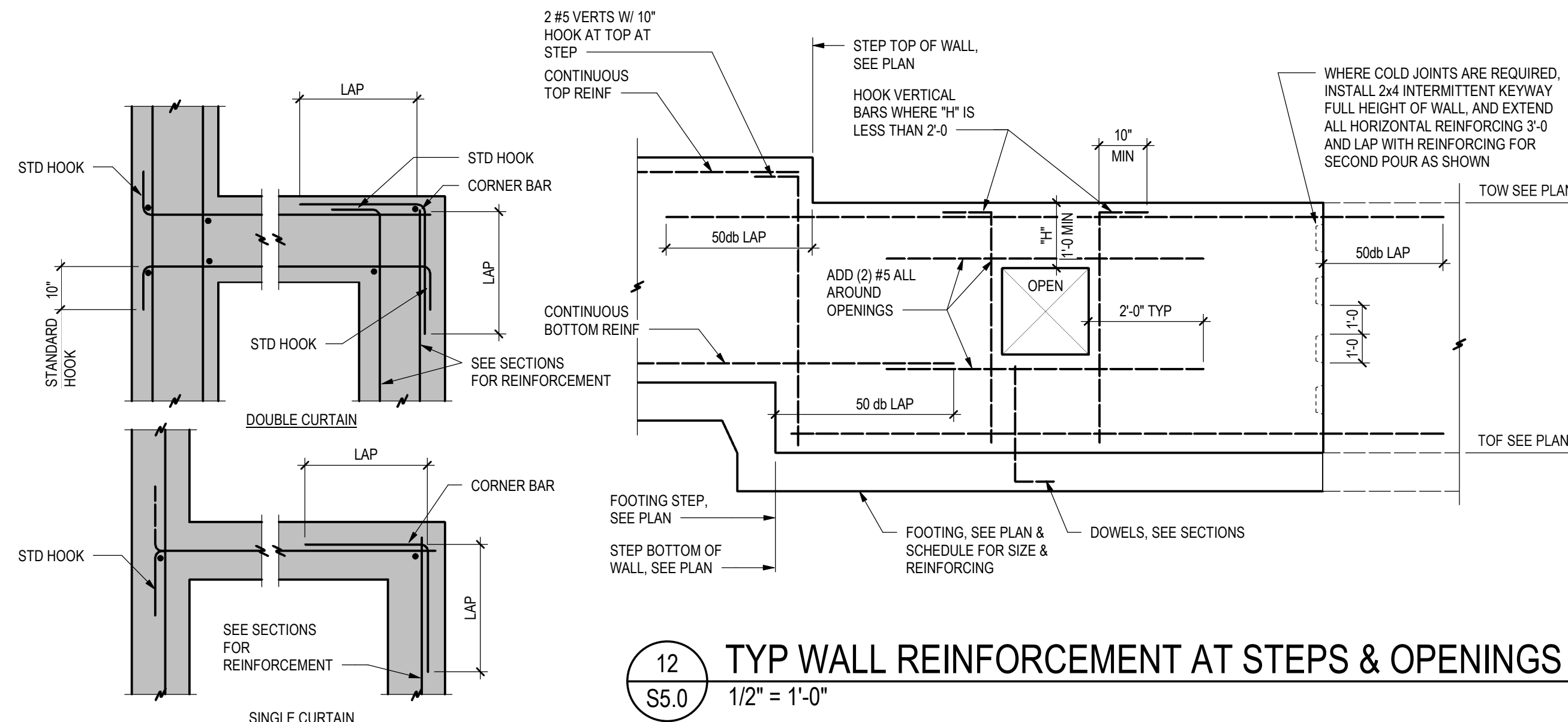
1/4\"/>

• USGS ELEVATION 7059.50' ± 100'-0\"/>

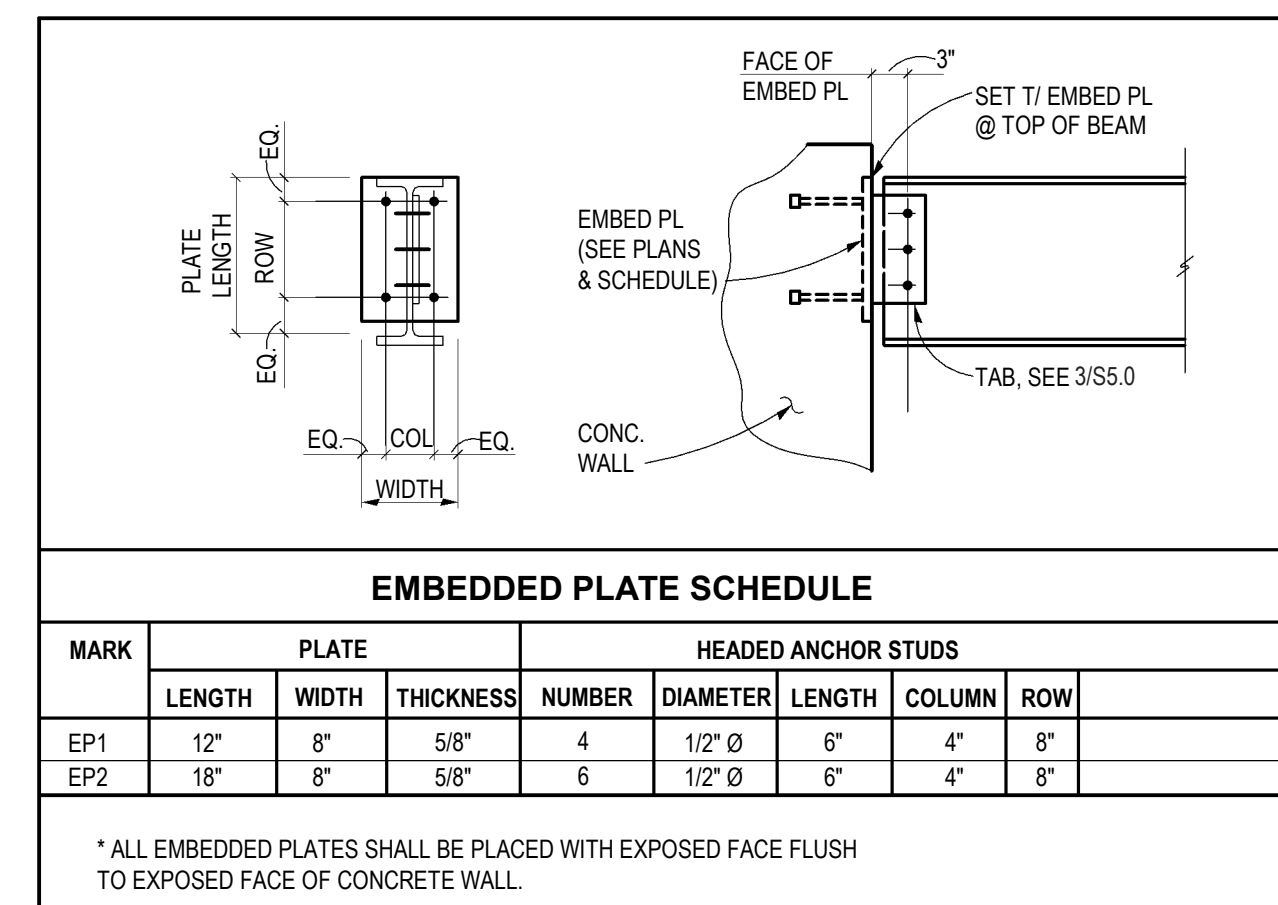




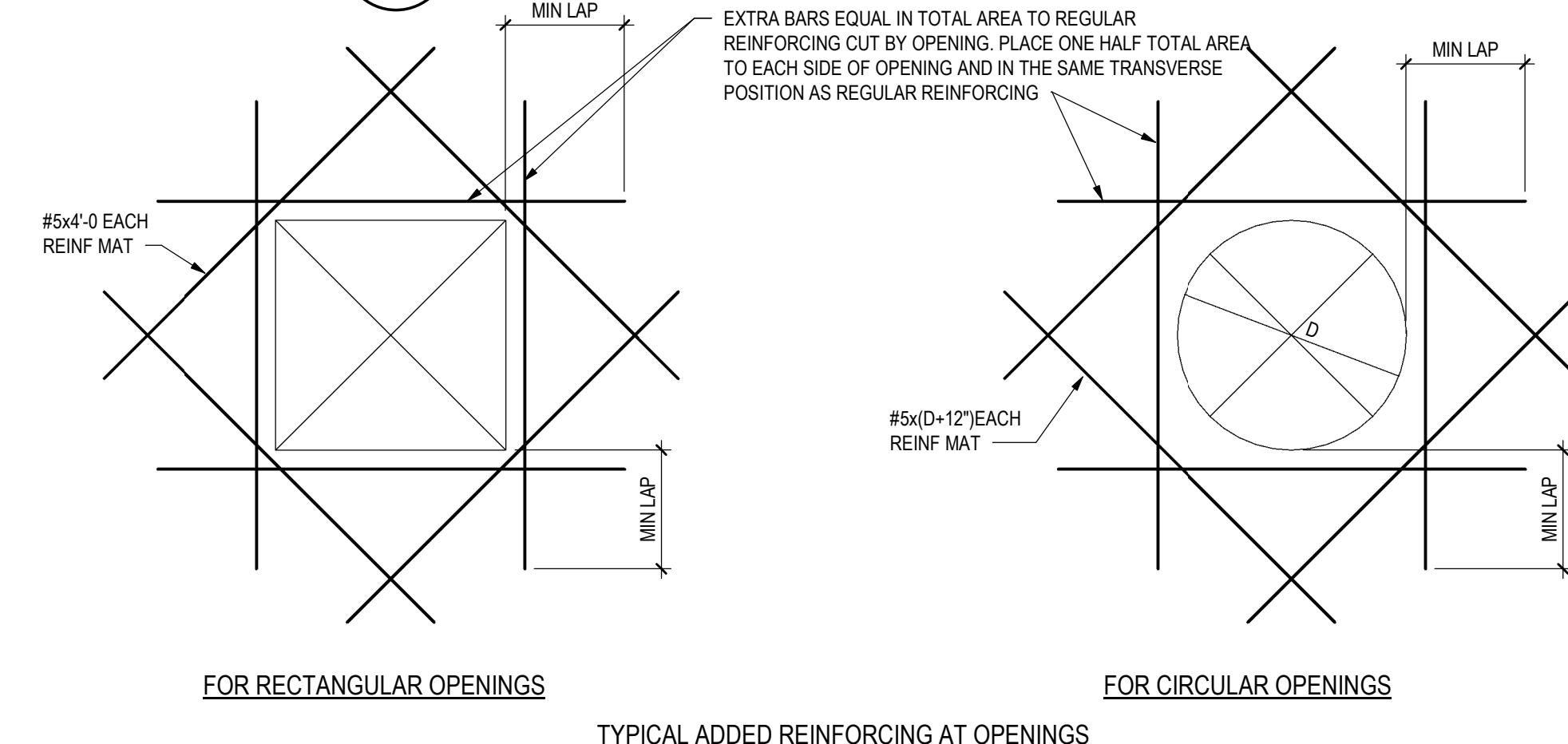
1. INSTALL ADHESIVE ANCHORS PER MANUFACTURER'S INFORMATION AND ICC REPORT
2. CONTRACTOR TO VERIFY MINIMUM EDGE DISTANCES, SPACING AND THICKNESS ARE IN ACCORDANCE WITH SCHEDULE PRIOR TO INSTALLING ANCHOR.
3. HOLES TO BE DRILLED WITH ROTARY DRILL ONLY. WHEN DRILLING HOLES IN EXISTING CONCRETE, USE SHIELD AND CAREFUL CUTTING TO AVOID DAMAGING THE EXISTING REINFORCING BARS. MAINTAIN A REASONABLE CLEARANCE BETWEEN REINFORCEMENT AND THE DRILLED-IN ANCHOR. FILL ABANDONED HOLES WITH HIGH STRENGTH GROUT.
4. SPECIAL INSPECTION IS REQUIRED PER IBC SECTION 1705 AND THE REQUIREMENTS OF THE ICC REPORTS. THE SPECIAL INSPECTOR MUST BE ON THE JOB SITE PERIODICALLY DURING ANCHOR INSTALLATION TO VERIFY ANCHOR TYPE, ANCHOR TYPE/TYPE, ANCHOR TYPE, EMBEDMENT DEPTH, CONCRETE TYPE, CONCRETE COMPRESSIVE STRENGTH, DRILL BIT DIAMETER, HOLE DEPTH, EDGE DISTANCE(S), ANCHOR SPACING(S), CONCRETE THICKNESS, AND ADHESIVE INJECTION.



12 TYP WALL REINFORCEMENT AT STEPS & OPENINGS  
S5.0 1/2" = 1'-0"



9 SCHEDULE  
S5.0 3/4" = 1'-0"



## 7 ADHESIVE ANCHORS

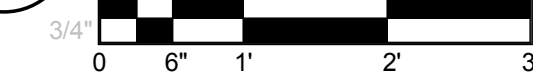
MINIMUM LAP SPLICE LENGTH AND STANDARD HOOK		
BAR SIZE	MINIMUM LAP SPLICE LENGTH	90° DEGREE HOOK DIMENSION
4	2'-8"	9"
5	3'-4"	12"
6	4'-0"	14"
7	5'-10"	16"
8	6'-8"	18"
9	7'-6"	23"
10	8'-6"	26"

5 LAP SCHEDULE  
S5.0 3/4" = 1'-0"

FOOTING SCHEDULE				
MARK	WIDTH	LENGTH	THICKNESS	REINFORCING
F2.0	2'-0"	2'-0"	1'-0"	(3) #5 EACH WAY, BOTTOM
F2.5	2'-6"	2'-6"	1'-0"	(3) #5 EACH WAY, BOTTOM
F3.0	3'-0"	3'-0"	1'-0"	(4) #5 EACH WAY, BOTTOM
F4.0	4'-0"	4'-0"	1'-0"	(5) #5 EACH WAY, BOTTOM
F4.5	4'-6"	4'-6"	1'-0"	(5) #5 EACH WAY, BOTTOM
F6.0	6'-0"	6'-0"	1'-2"	(7) #5 EACH WAY, BOTTOM
F24	2'-0"	CONT	1'-0"	(3) #5 CONT. #5 @ 16" TRANSVERSE
F30	2'-6"	CONT	1'-0"	(3) #5 CONT. #5 @ 16" TRANSVERSE
F36	3'-0"	CONT	1'-0"	(4) #5 CONT. #5 @ 16" TRANSVERSE

<p><u>FOOTING NOTES:</u></p> <ul style="list-style-type: none"> <li>• CENTER FOOTINGS UNDER STEMWALLS, PILASTERS, &amp; COLUMNS, TYPICAL UNLESS NOTED OTHERWISE</li> <li>• FOOTING WIDTHS SHALL NOT VARY IN THE FIELD FROM SIZE NOTED; OVERSIZE FOOTINGS ARE NOT ALLOWED</li> <li>• LAPPED BOARD FORMING NOT ALLOWED</li> <li>• TRENCH FORMING NOT ALLOWED</li> </ul>
---

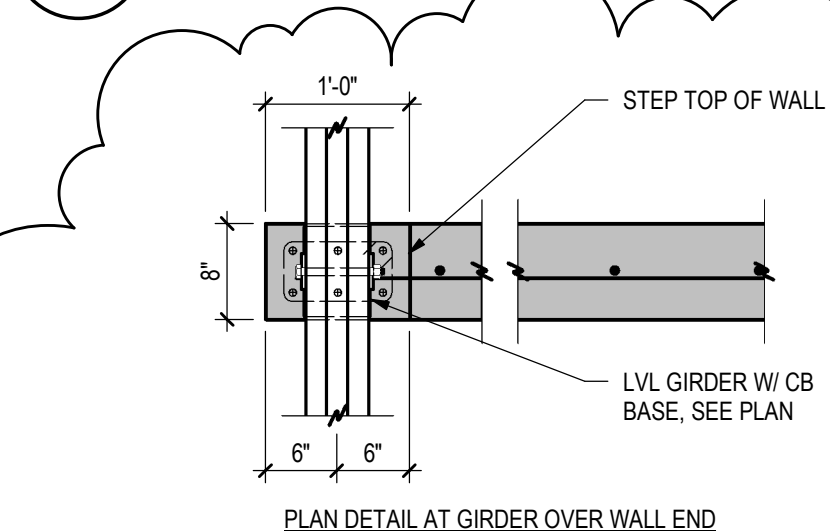
## FOOTING SCHEDULE



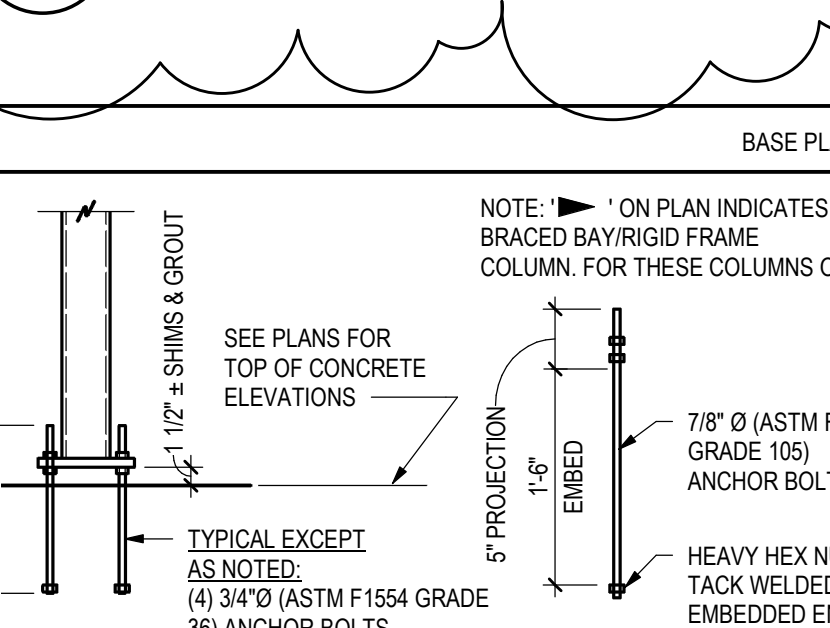
8  
S5.0

TYP WALL INTERSECTIONS

3/4" = 1'-0"



6 COUNTERFORT WALL END  
S5.0 3/4" = 1'-0"



**BASE PLATE SCHEDULE**

NOTE: ' ON PLAN INDICATES BRACED BAY/RIGID FRAME COLUMN. FOR THESE COLUMNS ONLY:

SEE PLANS FOR TOP OF CONCRETE ELEVATIONS

1 1/2" = SHIMS & GROUT

5" PROJECTION

1 1/2" TYP

5" EMBED, MIN

7/8" Ø (ASTM F1554, GRADE 105) ANCHOR BOLTS

HEAVY HEX NUT TACK WELDED TO EMBEDDED END

1 1/2" EMBED

5" PROJECTION

TYPICAL EXCEPT AS NOTED:  
(4) 3/4" Ø (ASTM F1554 GRADE 36) ANCHOR BOLTS

**BASE PLATE TYPES**

**BASE PLATE TYPE 'A'**

**BASE PLATE TYPE 'B'**

TYP 90°. SEE PLAN FOR OTHER ANGLES

**BASE PLATE TYPE 'C'**

**BASE PLATE TYPE 'D'**

**BASE PLATE TYPE 'E'**

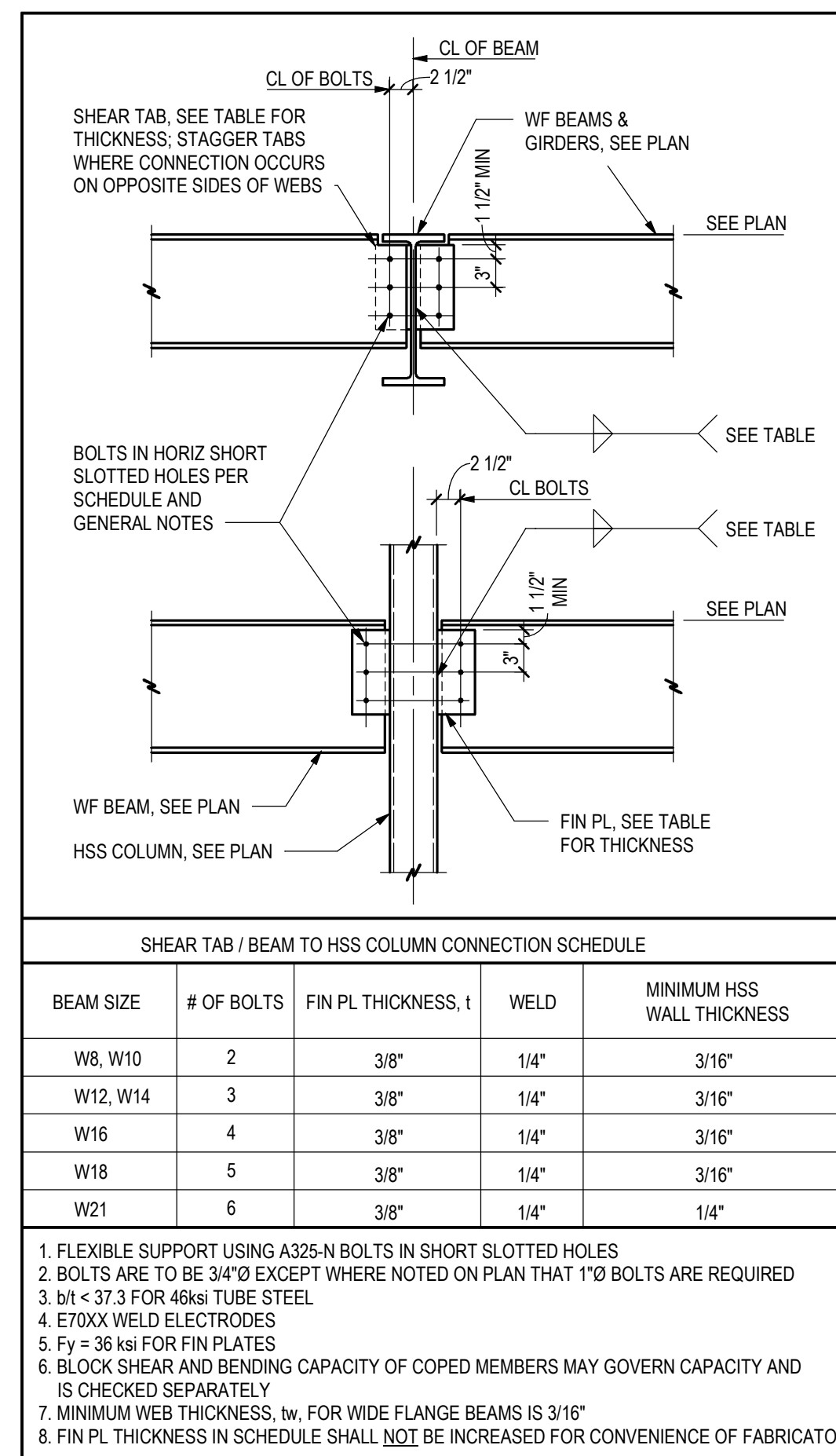
**BASE PLATE TYPE 'F'**

**BASE PLATE SCHEDULE**

MARK	TYPE	DIM L	DIM W	THICK	NOTES
BP1	A	1'-0"	1'-0"	3/4"	
BP2	A	1'-2"	1'-2"	3/4"	
BP1	B	1'-0"	5 1/2"	3/4"	
BPC1	C	1'-0"	5 1/2"	1/2"	

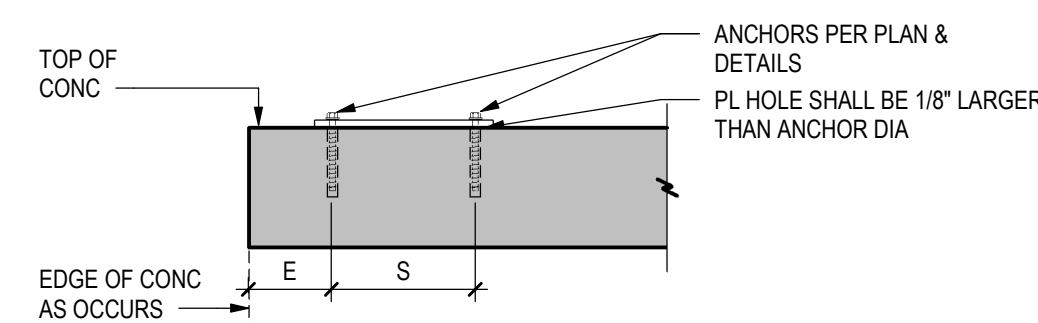
## 2 TYPICAL COLUMN BASE DETAILS

10 TRIM REINFORCING DETAIL  
S5.0 3/4" = 1'-0"



3  
S5.0

SCREW ANCHOR IN 2500 PSI MIN & 21 DAY AGE MIN DRY CONCRETE							
ANCHOR TYPE	ANCHOR AND PILOT HOLE DIA	MINIMUM EMBEDMENT H	MINIMUM EDGE DIST E	MINIMUM SPACING S	MINIMUM CONCRETE THICKNESS T	INSTALL TORQUE (FT-LB)	MAX. INSTALL TORQUE (FT-LB)
SIMPSON TITEN HD (ICC- ESR 2713)	3/8"ø	2 1/2"	1 3/4"	3"	4"	10	50
	1/2"ø	3 1/4"	1 3/4"	3"	5"	10	65
	5/8"ø	4"	1 3/4"	3"	6"	10	100
	3/4"ø	5 1/2"	1 3/4"	3"	8 3/4"	20	150
HILTI KH-EZ (ICC-ESR 3027)	3/8"ø	2 1/2"	1 1/2"	3"	4"	10	40
	1/2"ø	3"	1 3/4"	3"	4 3/4"	10	45
	5/8"ø	3 1/4"	1 3/4"	4"	5"	10	85
	3/4"ø	4"	1 3/4"	4"	6"	20	115



1. INSTALL SCREW ANCHORS PER MANUFACTURER'S INFORMATION AND ICC REPORT INSTRUCTIONS. SPECIAL INSPECTION IS REQUIRED PER SECTION 1705 OF THE IBC AND THE REQUIREMENTS OF THE ICC REPORTS. INSTALLED ANCHORS SHALL BRING CONNECTED PILES INTO FIRM CONTACT, MEETING THE INSTALLED TORQUE BUT NOT EXCEEDING THE MAXIMUM INSTALLED TORQUE.
2. CONTRACTOR TO VERIFY MINIMUM EDGE DISTANCES, SPACING AND THICKNESS ARE IN ACCORDANCE WITH SCHEDULE PRIOR TO INSTALLING ANCHOR.
3. HOLES TO BE DRILLED WITH ROTARY DRILL ONLY. WHEN INSTALLING DRILLED-IN ANCHORS IN EXISTING REINFORCED CONCRETE, USE CARE AND CAUTION TO AVOID CUTTING OR DAMAGING THE EXISTING REINFORCING BARS. MAINTAIN A REASONABLE CLEARANCE BETWEEN REINFORCEMENT AND THE DRILLED-IN ANCHOR. FILL ABANDONED HOLES WITH HIGH STRENGTH GROUT.
4. THE SPECIAL INSPECTOR MUST BE ON THE JOBSITE PERIODICALLY DURING ANCHOR INSTALLATION TO VERIFY ANCHOR TYPE, ANCHOR DIMENSIONS, HOLE CLEANLINESS, EMBEDMENT DEPTH, CONCRETE TYPE, CONCRETE COMPRESSIVE STRENGTH, DRILL BIT DIAMETER, HOLE DEPTH, EDGE DISTANCE(S), ANCHOR SPACING(S), CONCRETE THICKNESS, AND TIGHTENING TORQUE.

## 4 SCREW ANCHOR DETAIL



ARCHITECTURE  
PLANNING  
LANDSCAPE  
INTERIORS

Copyright VERTICAL ARTS, INC.  
All Rights Reserved

This document, and the ideas and designs incorporated herein, as an instrument of professional service, is the property of Vertical Arts Inc. and is not to be used, in whole or in part for any other project without the written authorization from a principal of Vertical Arts, Inc.



CAMPBELL RESIDENCE  
Lot 5 - Eagle's Vista  
Steamboat Springs, CO 80488  
1907

ISSUE NAME	DATE
BUILDING PERMIT	08/23/2019
VE REVISIONS	10/15/2019
FOUNDATION REVISIONS	03/13/2020

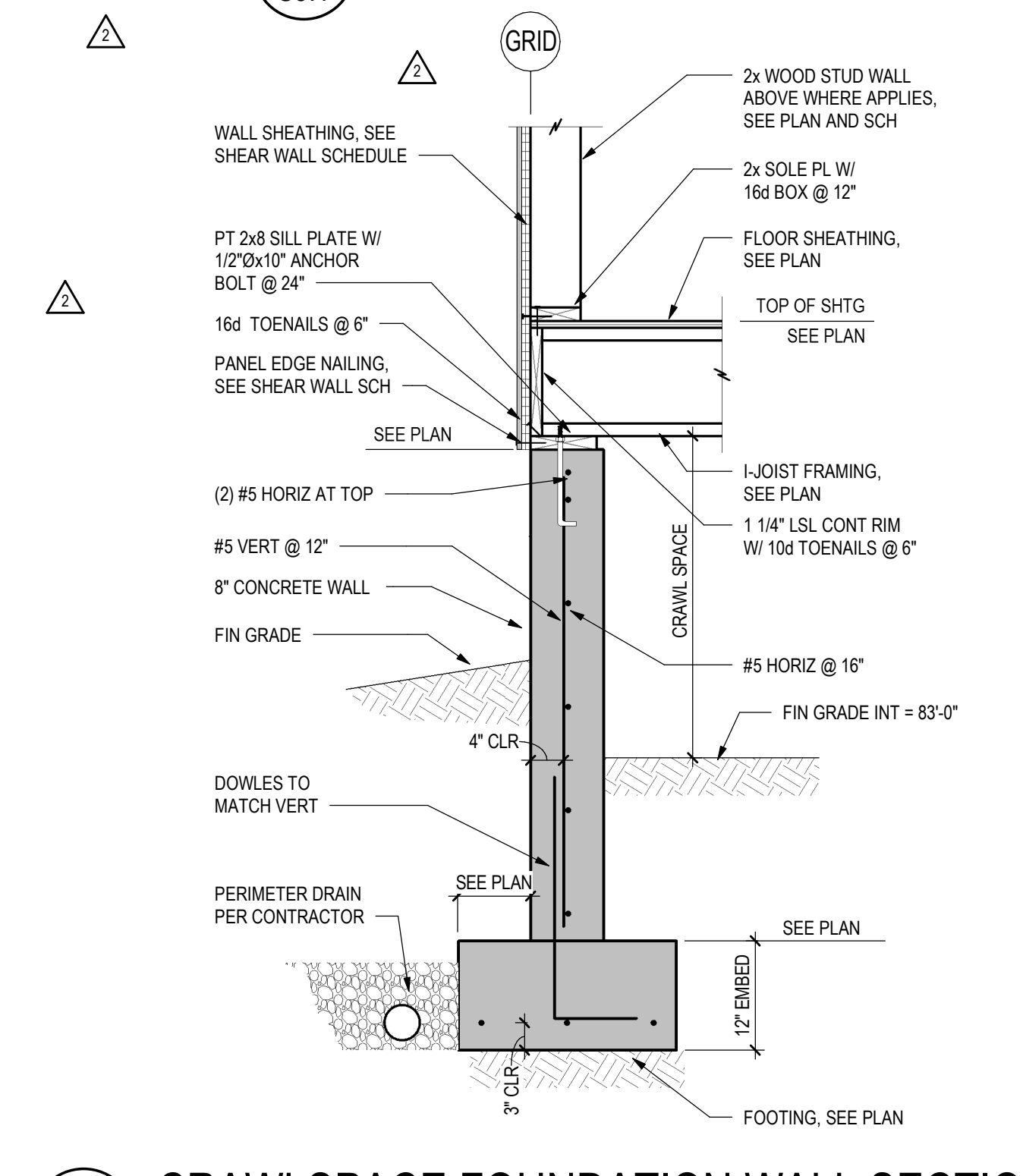
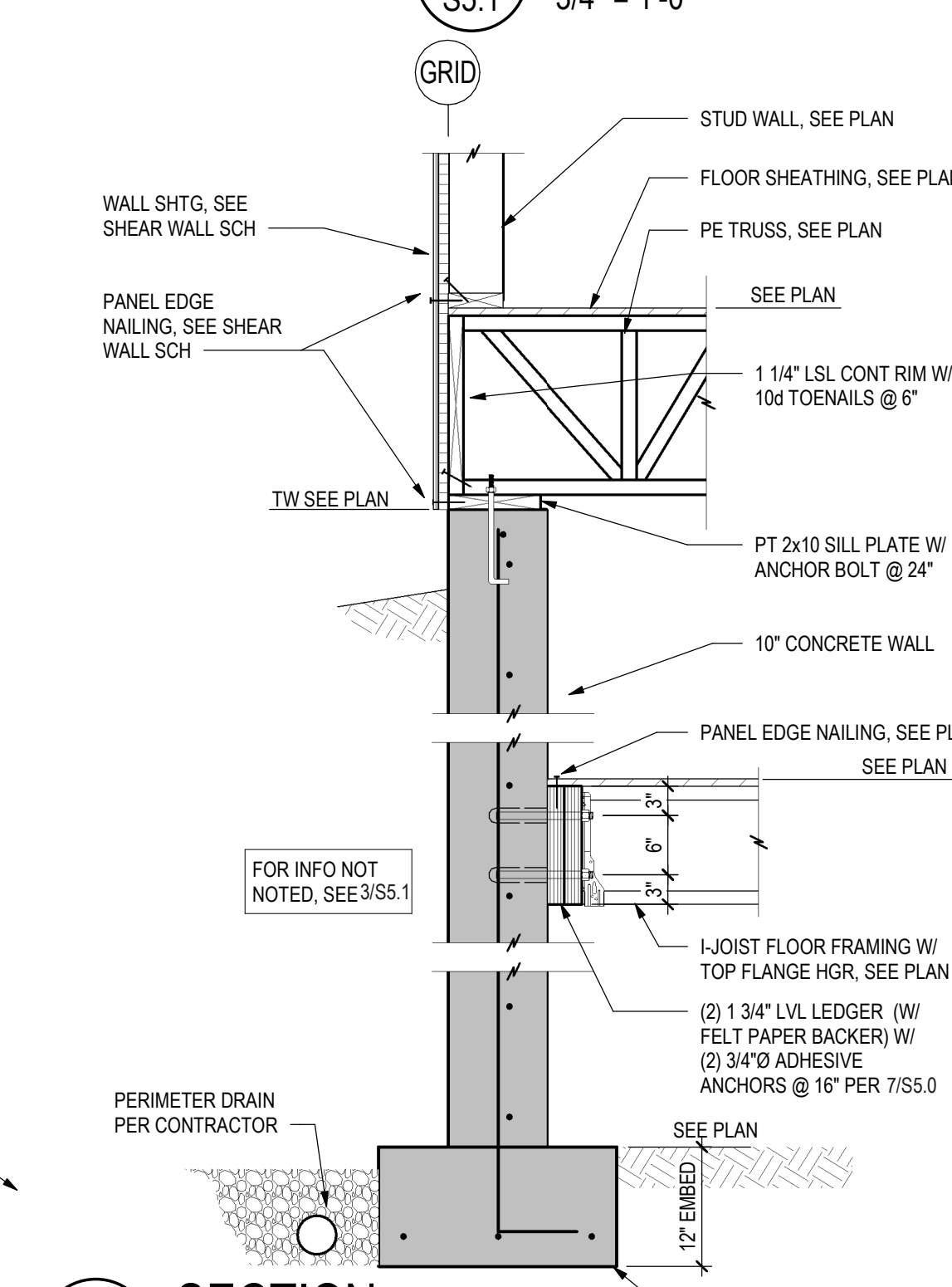
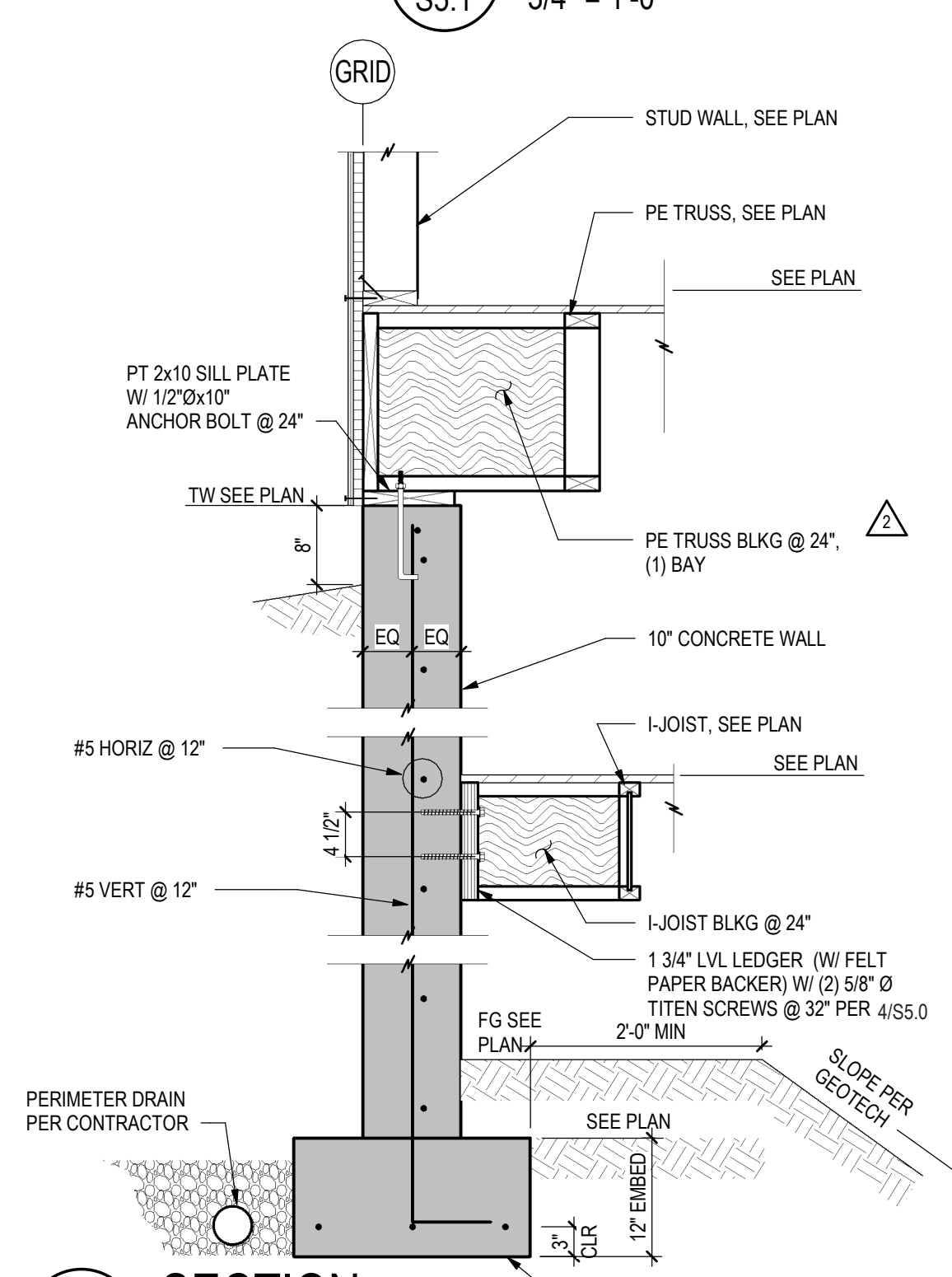
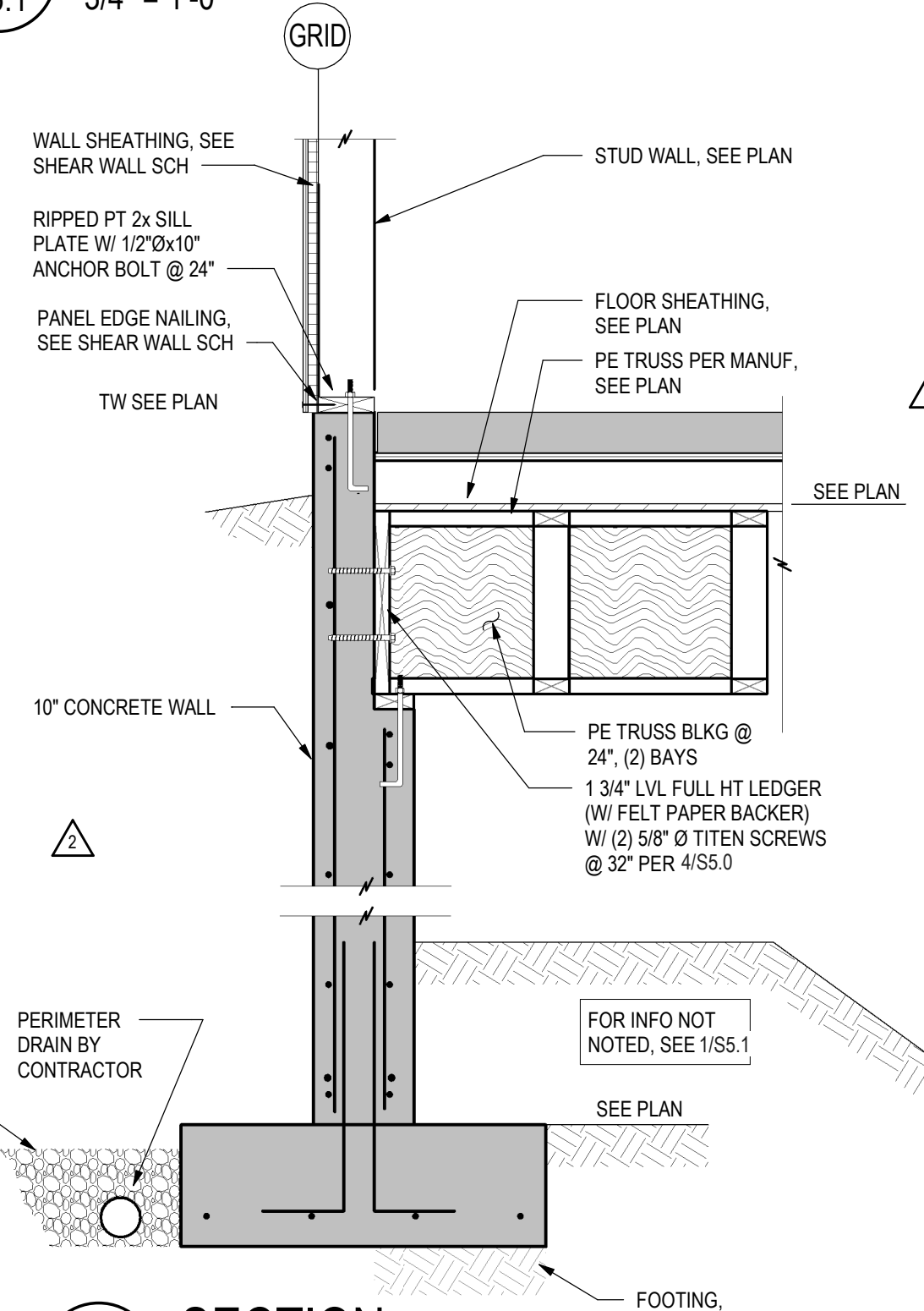
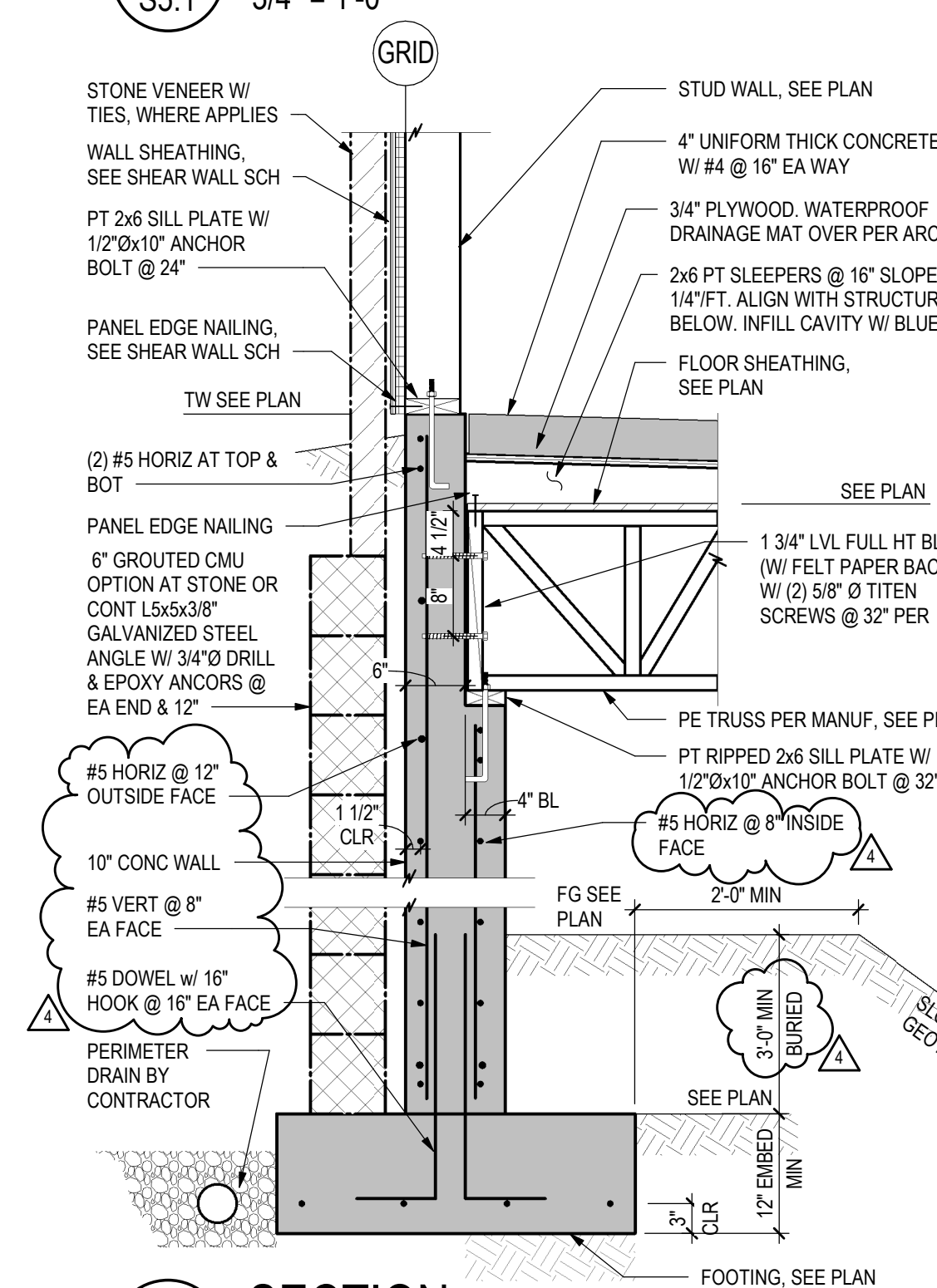
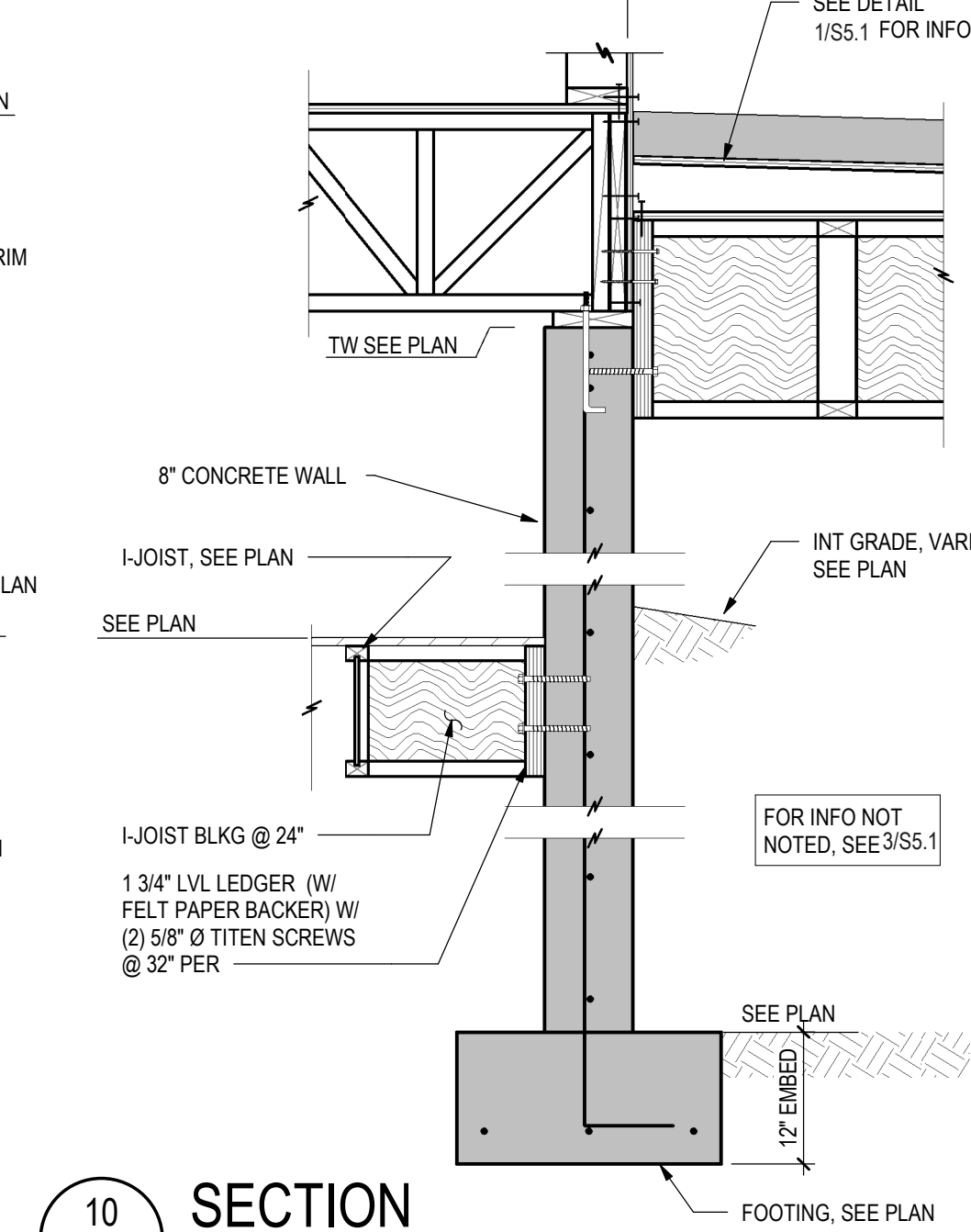
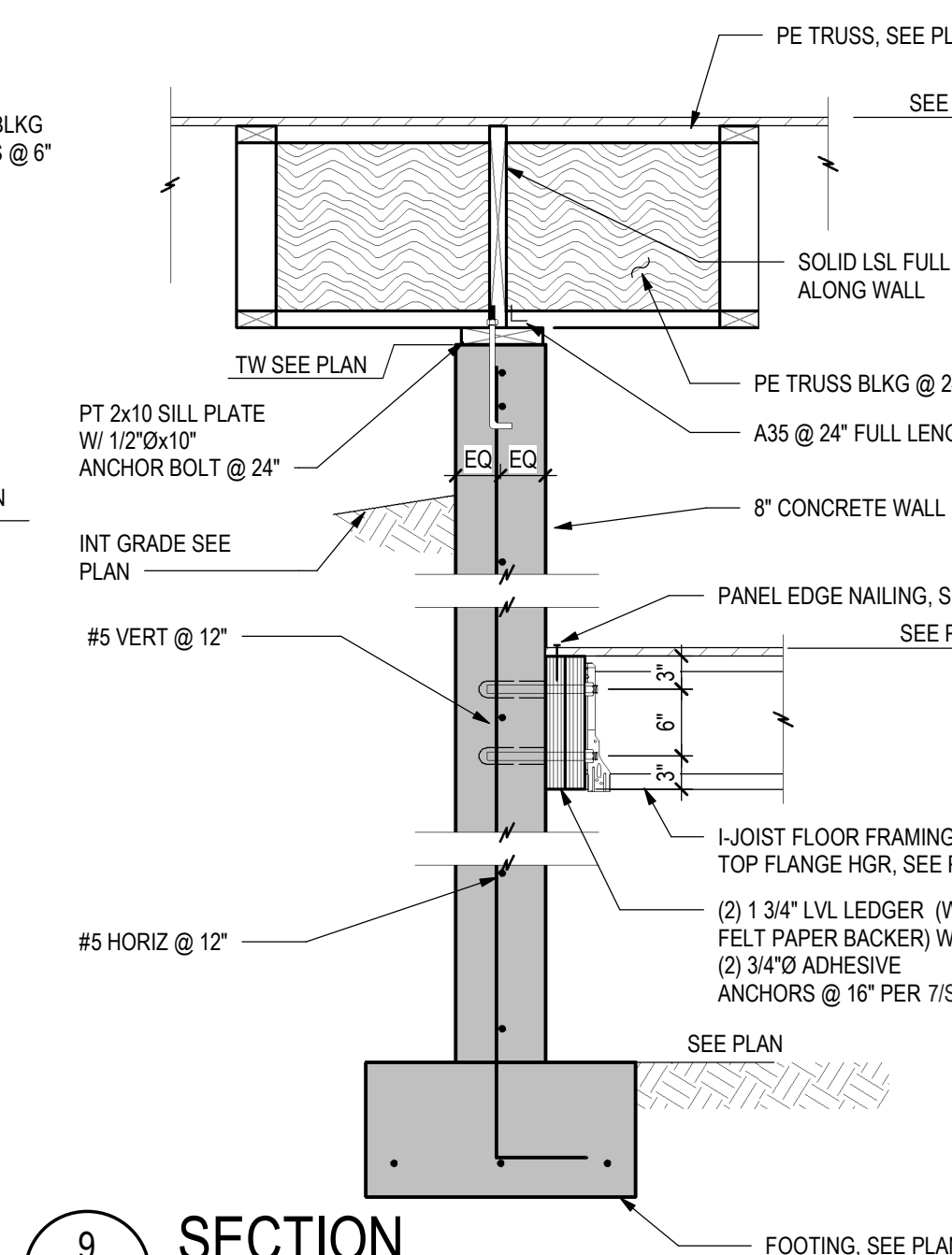
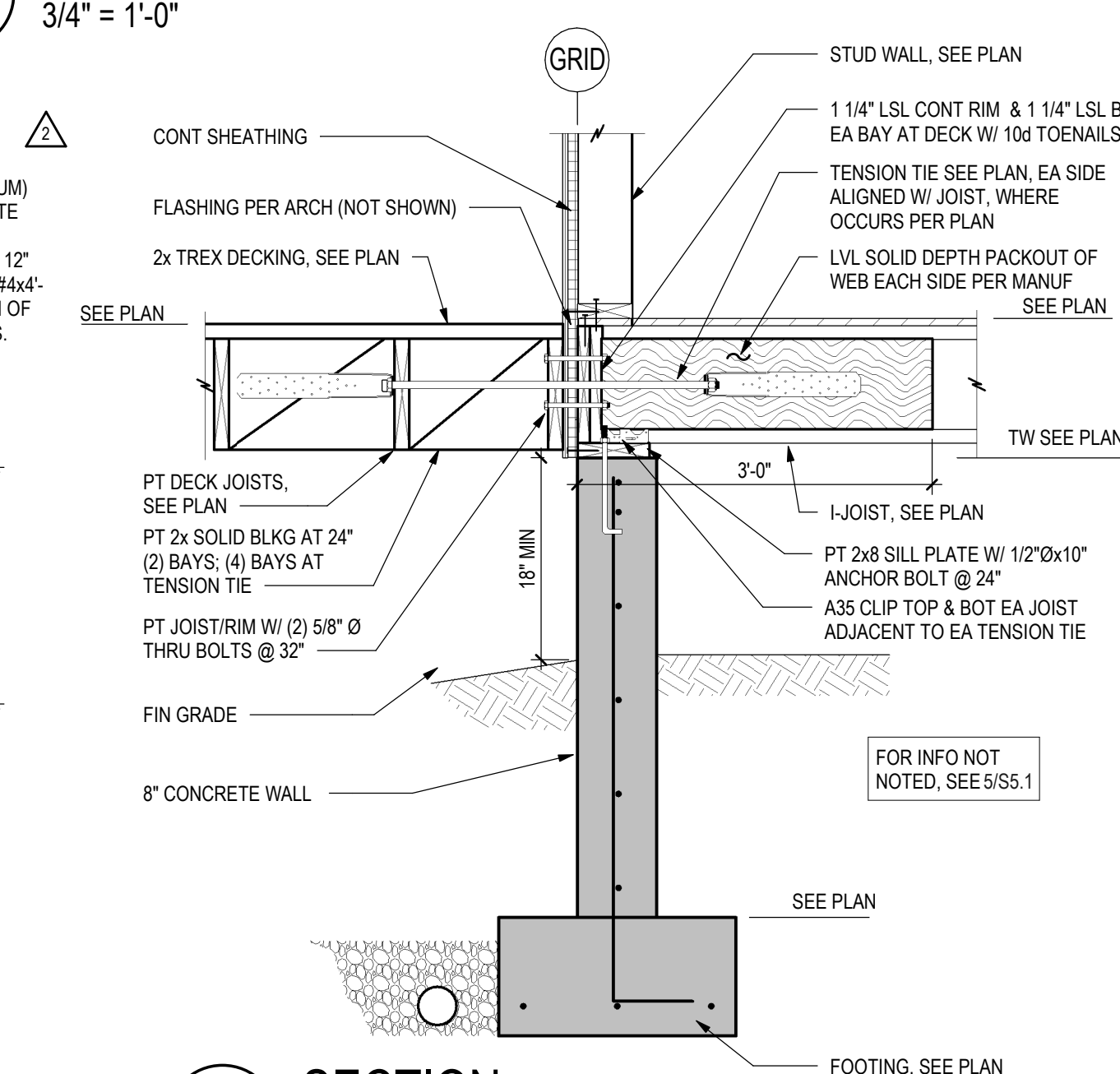
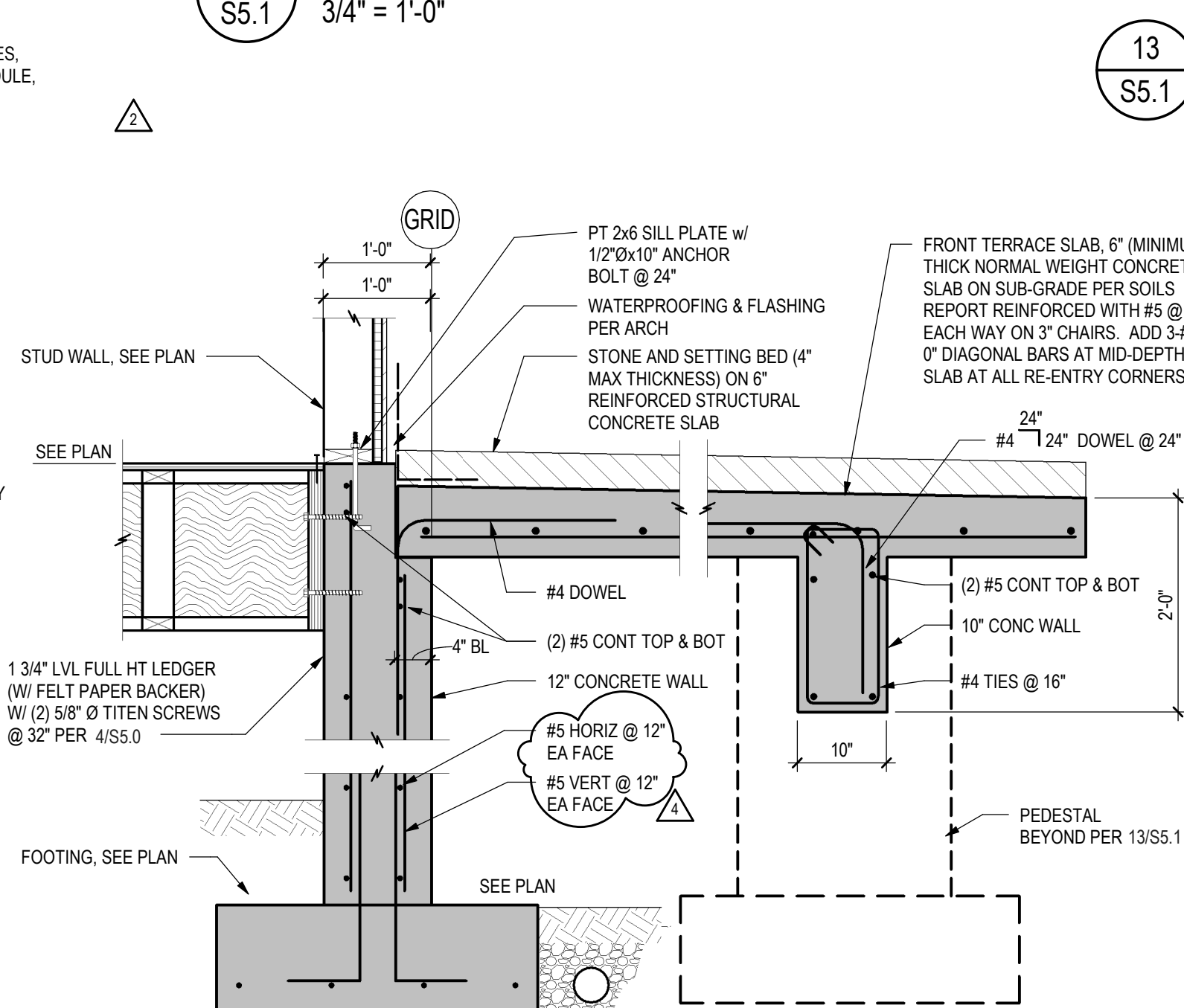
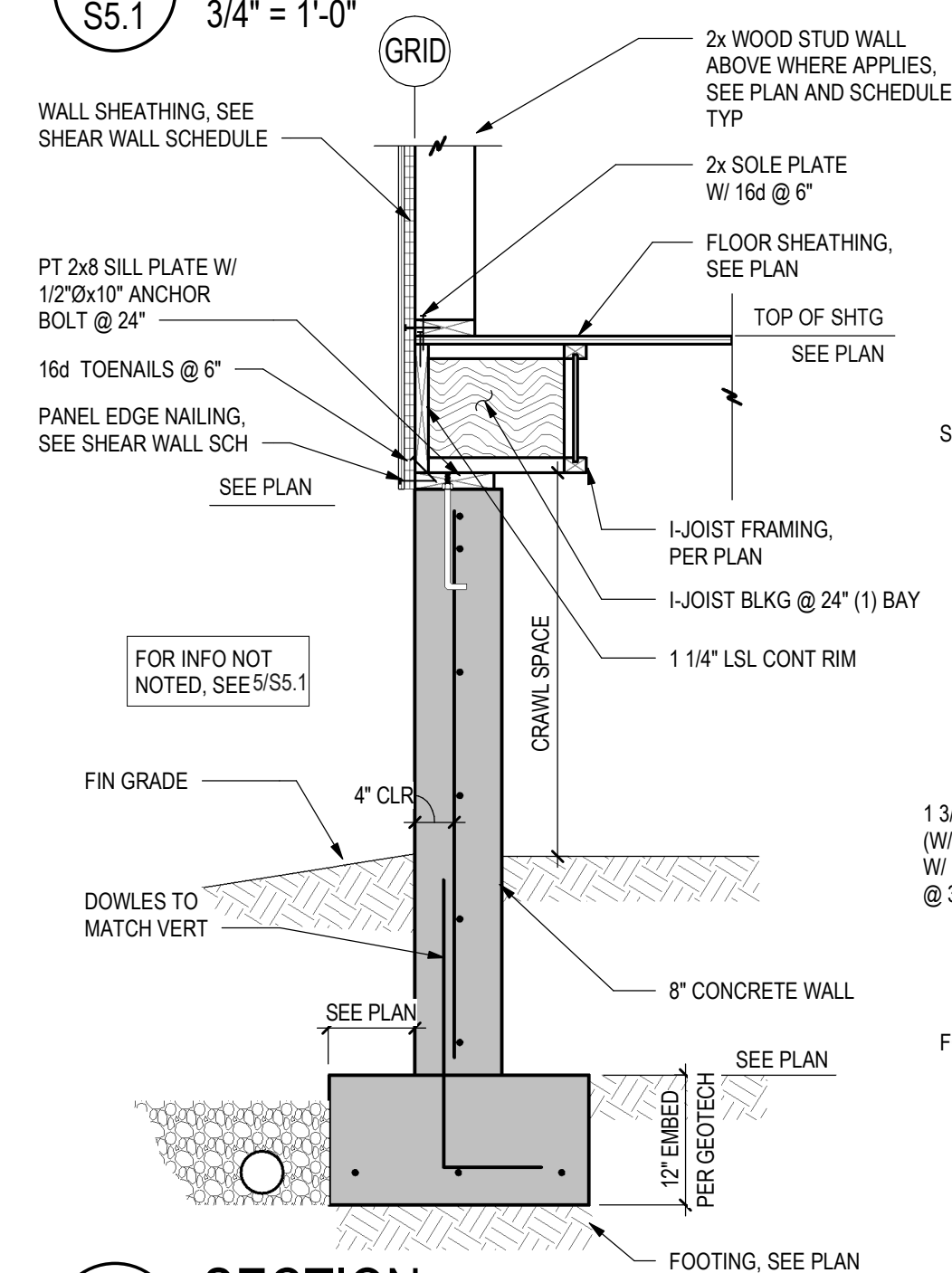
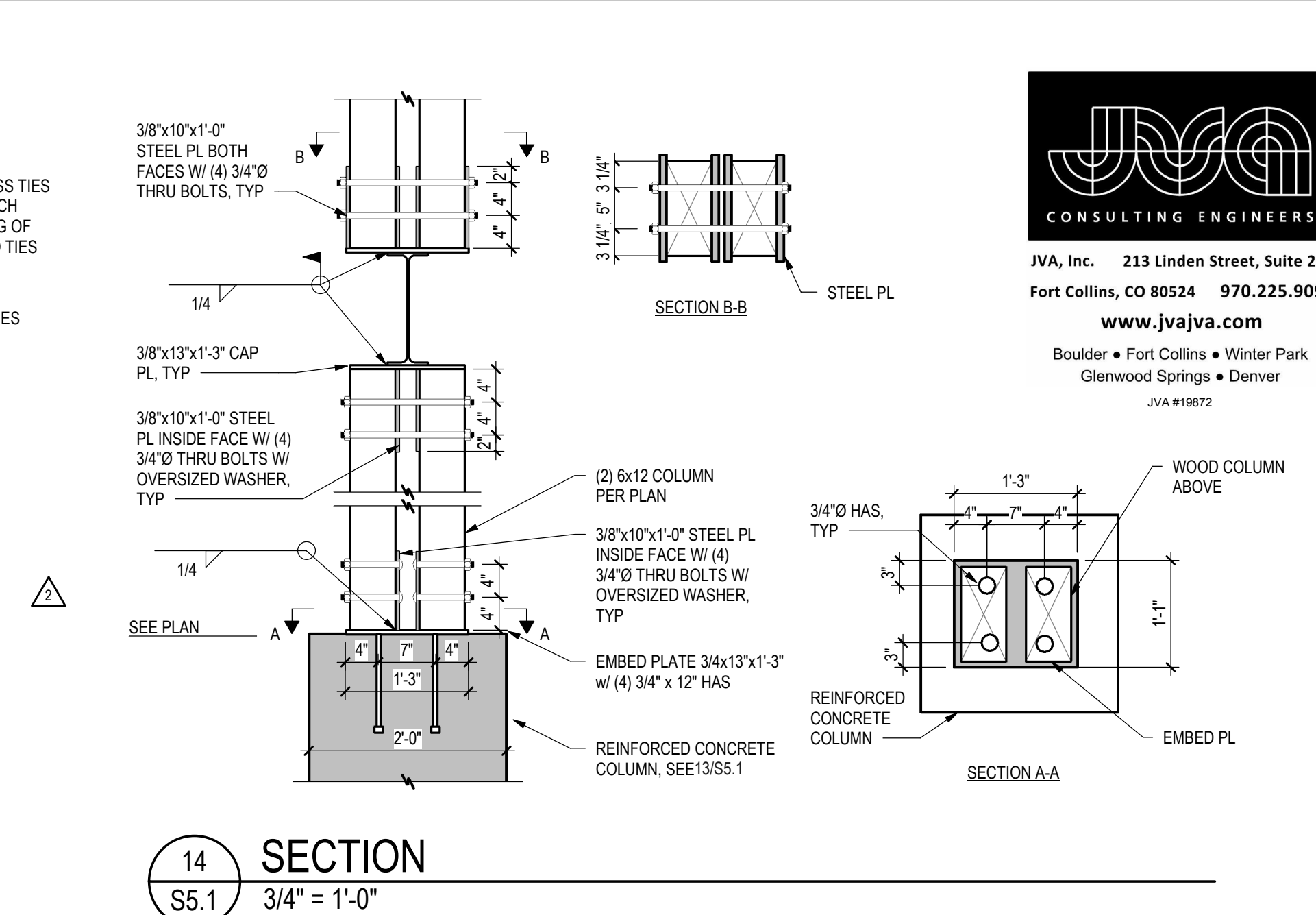
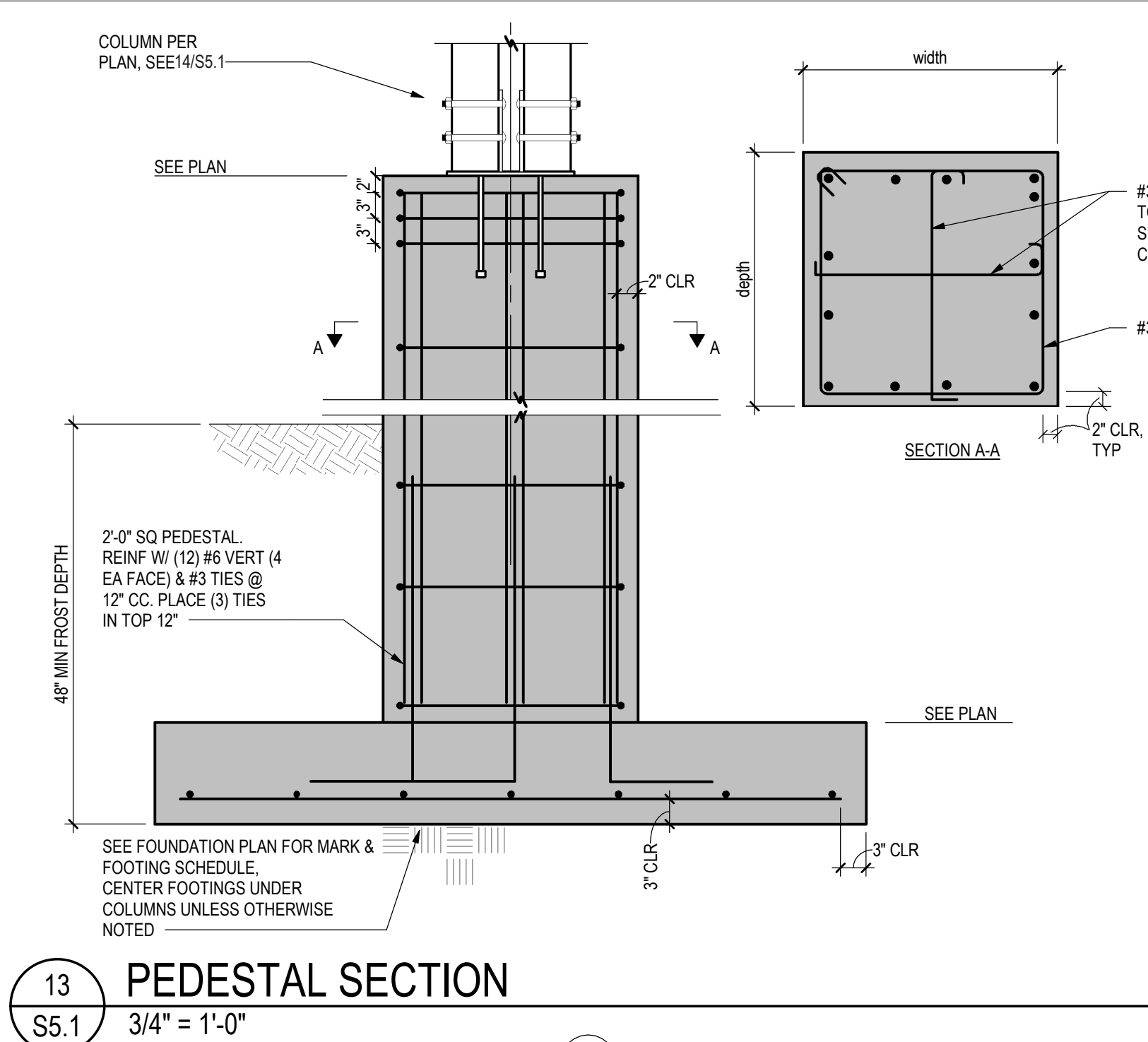
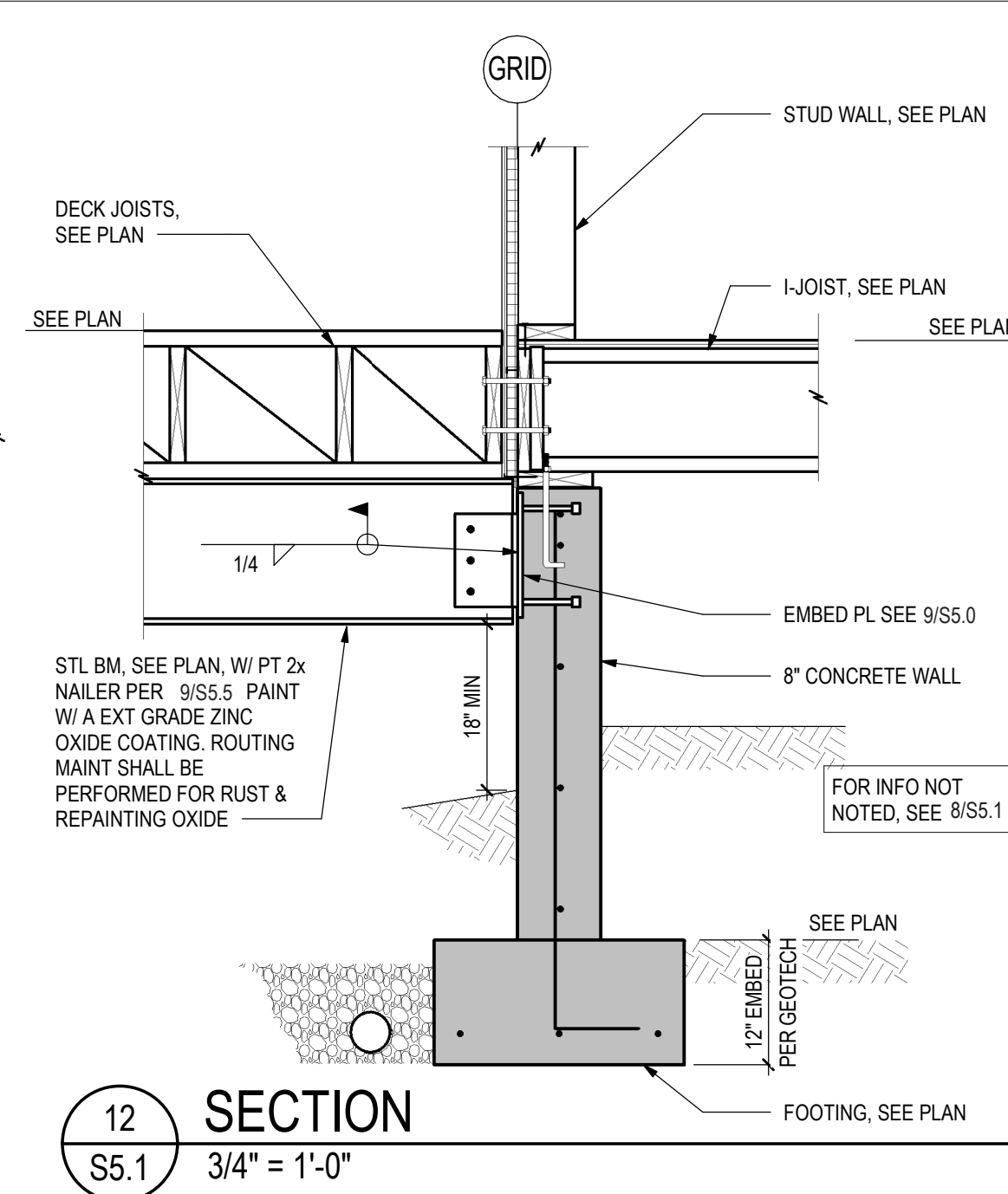
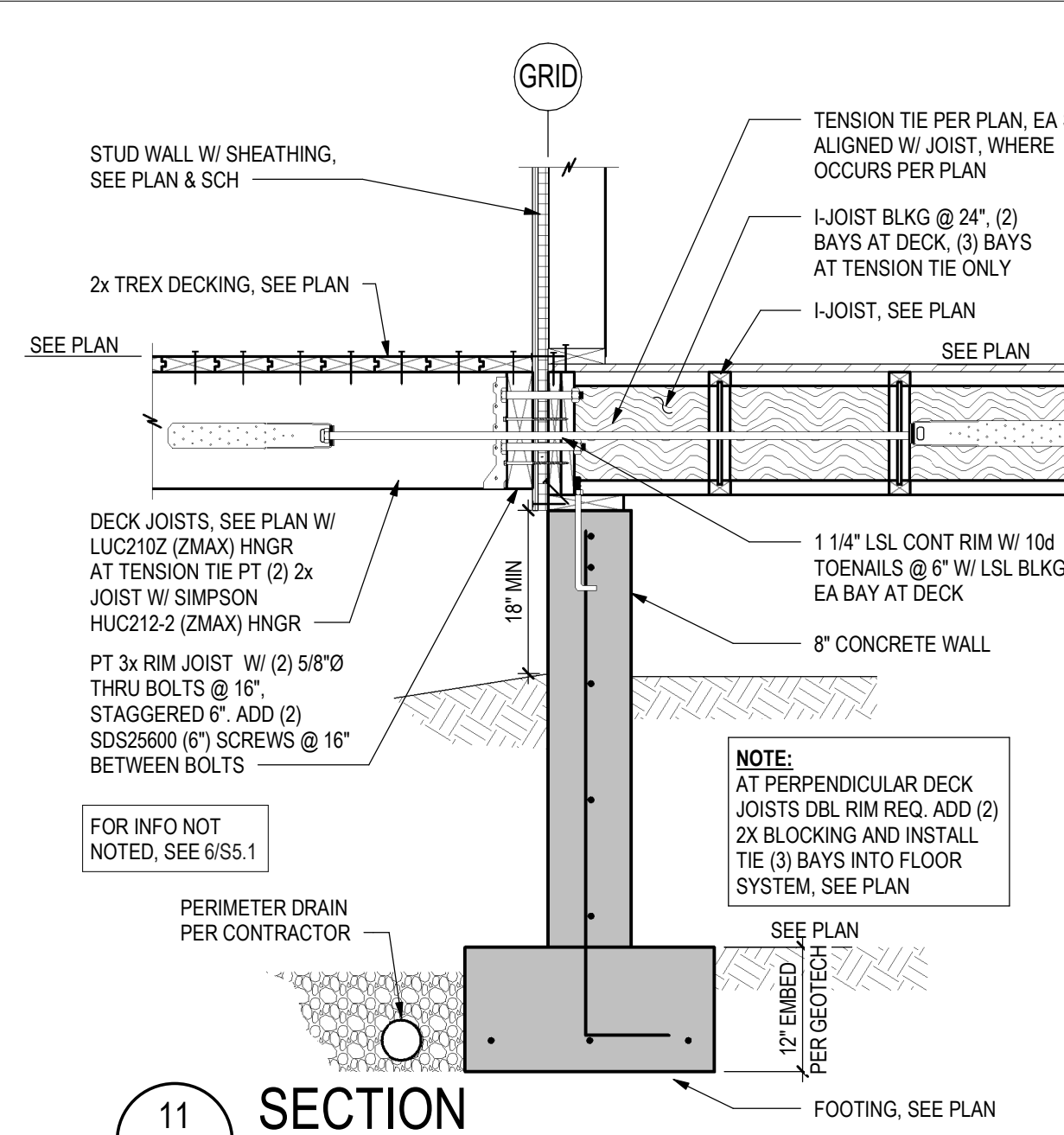
DRAWING TITLE
SCHEDULES & TYPICAL DETAILS

SHEET NO.

S5.0

3/13/2020 3:35:51 PM





ISSUE NAME	DATE
BUILDING PERMIT	08/23/2019
VE REVISIONS	10/15/2019
FOUNDATION REVISIONS	03/13/2020