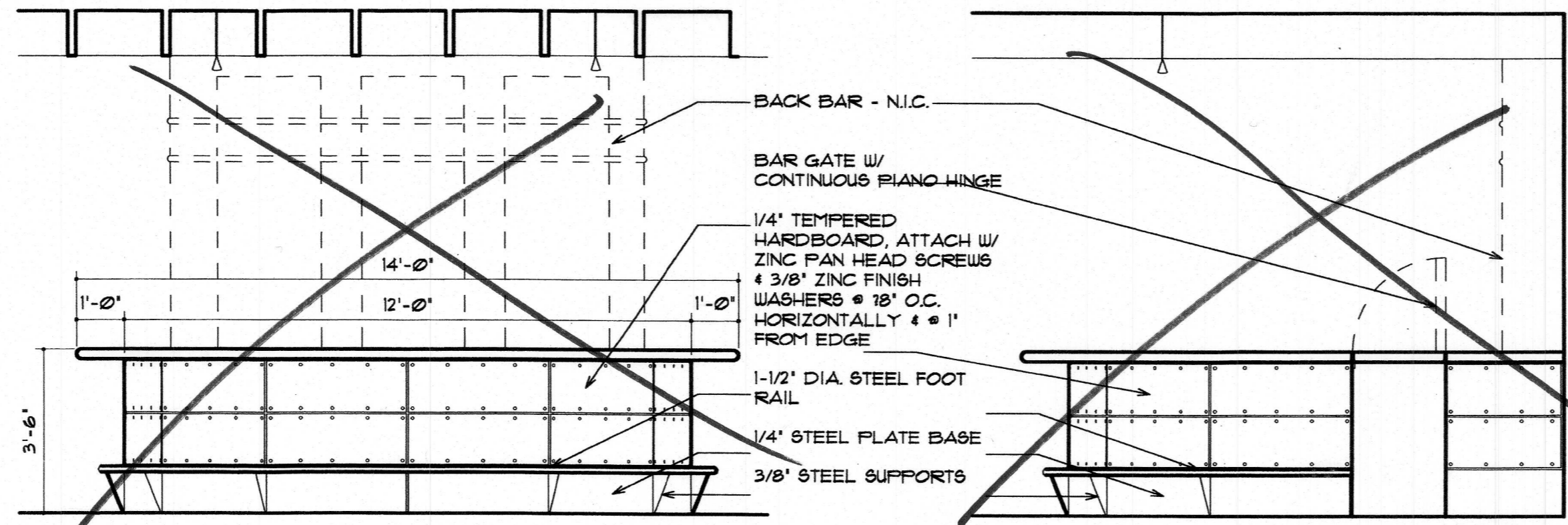
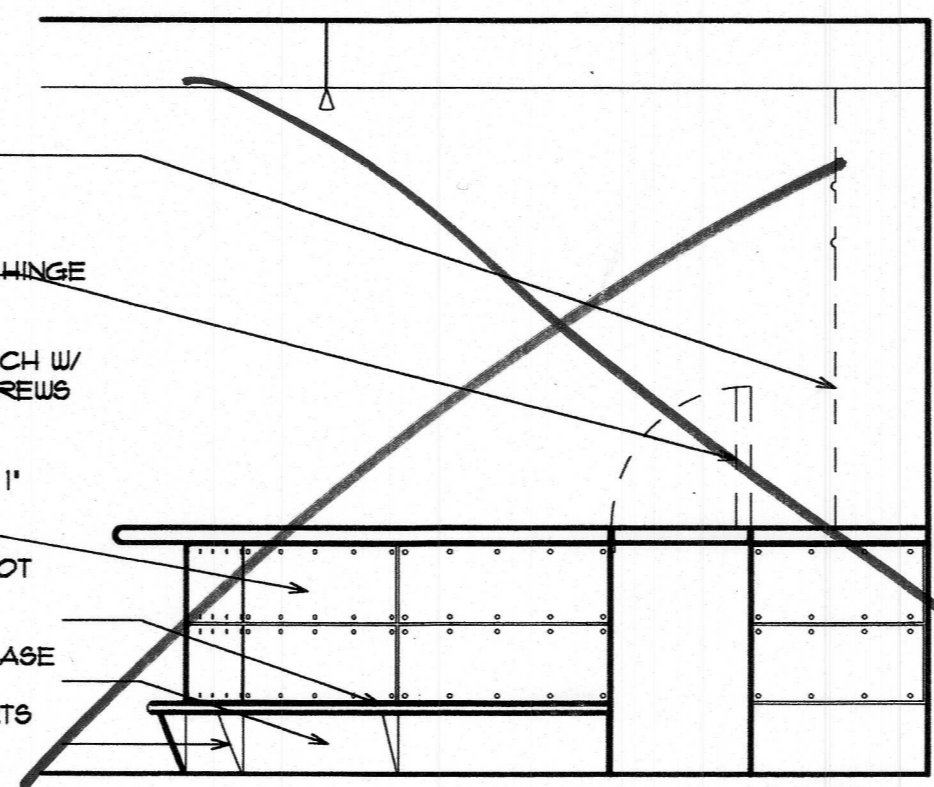


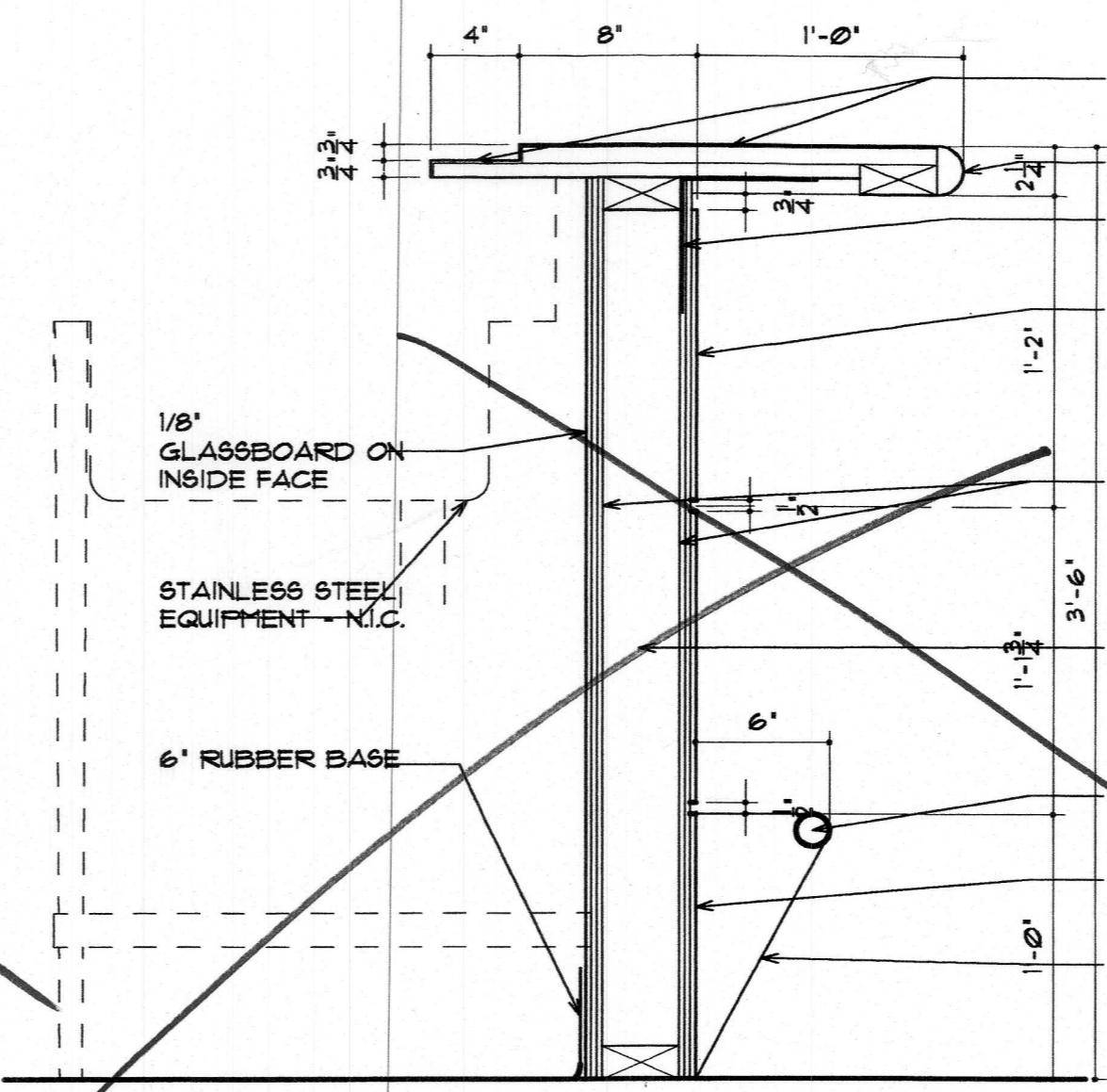
8 BAR EAST ELEVATION
SCALE: 3/8" = 1'-0"



7 BAR NORTH ELEVATION
SCALE: 3/8" = 1'-0"

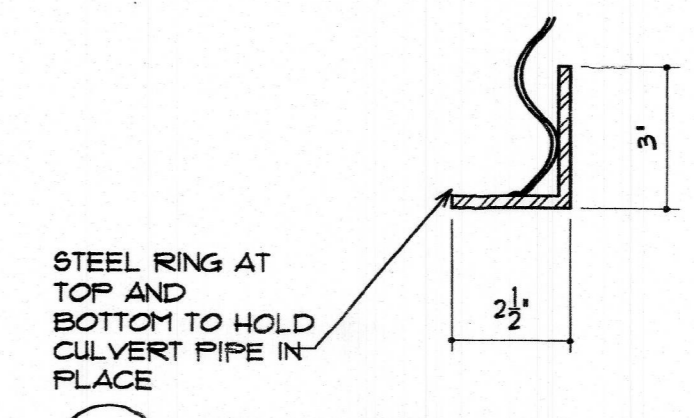


6 BAR WEST ELEVATION
SCALE: 3/8" = 1'-0"



5 SECTION @ BAR
SCALE: 1 1/2" = 1'-0"

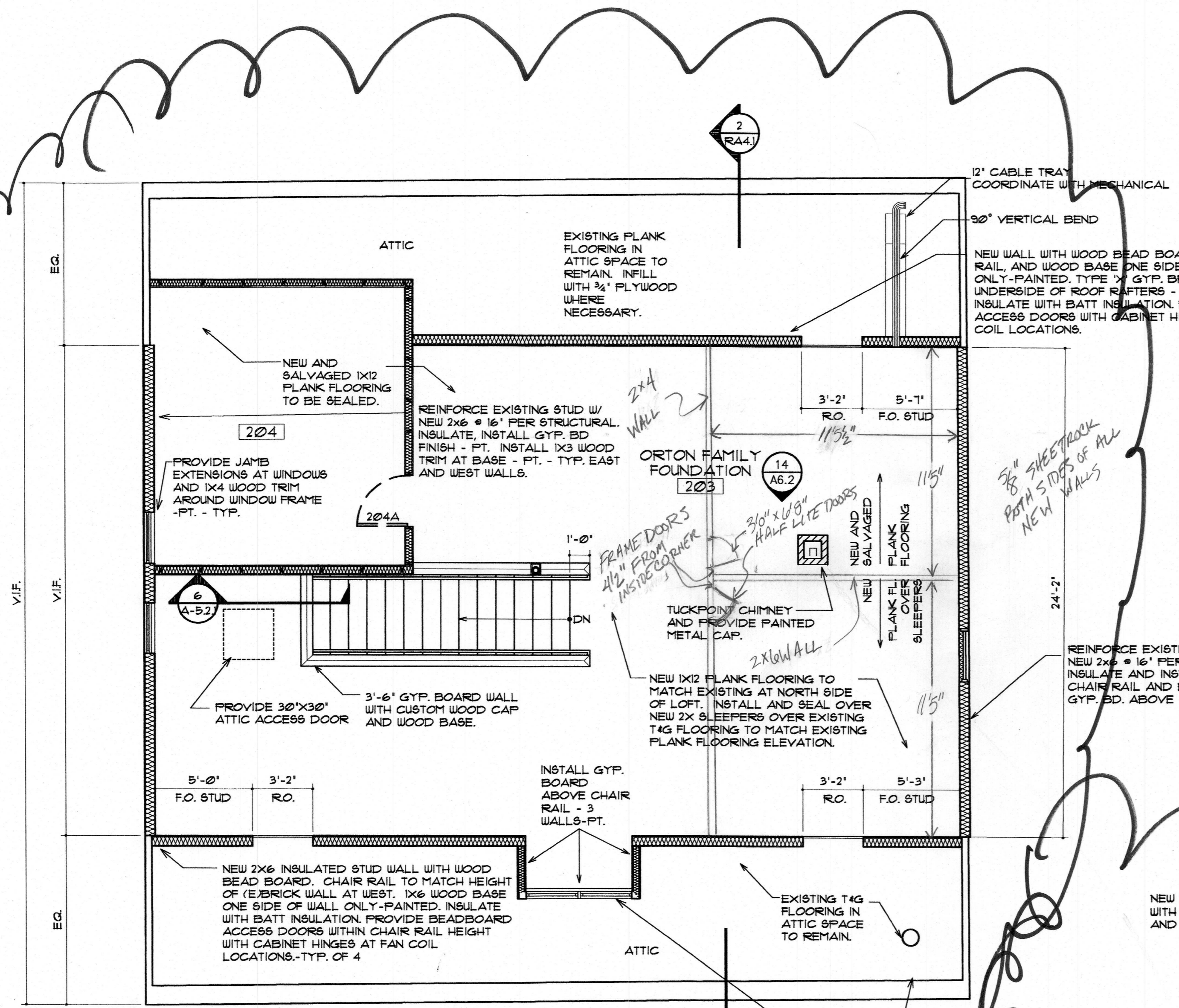
- FLAM. COUNTER & DRINK RAIL
- WOOD BULLNOSE
- 6"x6"x3/4" STEEL ANGLES @ 12" O.C.
- 1/4" TEMPERED HARDBOARD, GLUE & SCREW TO SUBSTRATE - SLICK SIDE OUT
- (2) LAYERS 1/4" PLYWOOD EACH SIDE, GLUE & SCREW TO STUDS, STAGGER JOINTS
- 2x4 STUD DIE WALL - STUDS @ 12" O.C. ON CURVE
- 1-1/2" DIA. STEEL FOOT RAIL
- 1/4" STEEL PLATE BASE
- 3/8" STEEL SUPPORTS



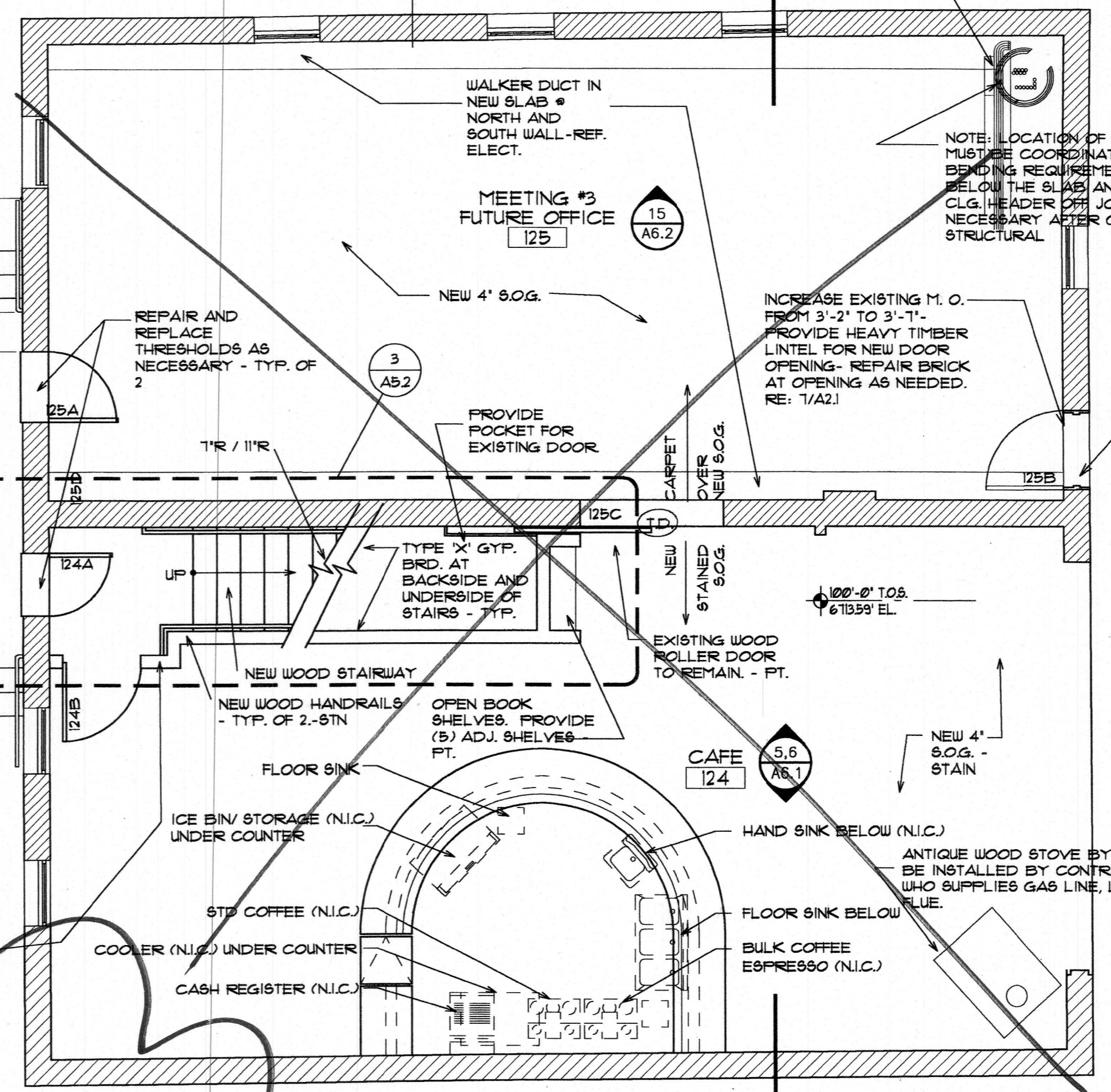
4 SECTION OF CHASE
SCALE: 3" = 1'-0"



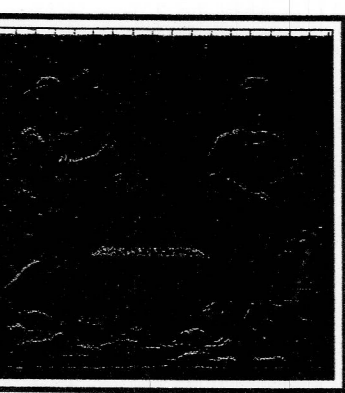
3 ELEVATION OF PIPE CHASE
SCALE: 1/2" = 1'-0"



2 LOFT PLAN POWER PLANT NEW CONSTRUCTION
SCALE: 1/4" = 1'-0"



1 FIRST FLOOR PLAN POWER PLANT NEW CONSTRUCTION
SCALE: 1/4" = 1'-0"



Andrews & Anderson, P.C.
ARCHITECTURE
HISTORIC PRESERVATION
PLANNING
1120 WASHINGTON AVENUE, SUITE 200
GOLDEN, COLORADO 80401
(303) 278-4378
FAX (303) 278-0521

COPYRIGHT 1999
ANY UNAUTHORIZED USE OF THESE
DOCUMENTS IS PROHIBITED WITHOUT
THE WRITTEN CONSENT OF
ANDREWS & ANDERSON, P.C.

CENTENNIAL HALL
CITY OF STEAMBOAT SPRINGS
STEAMBOAT SPRINGS, COLORADO

ISSUED	CONSTRUCTION
DATE	1/14/00
REVISION	DATE

DRAWN	SM/RW
CHECKED	BMK
PROJECT NO.	99300

SHEET TITLE
POWER PLANT
REHABILITATION
FLOOR PLANS
NEW CONSTRUCTION

SHEET NO. RA1.2

N:\WORKS\1999\99300\Centennial\1_Ha1\Area\1\99300-RA1.2-CDS.dwg Mon Jan 17 10:45:00 2000