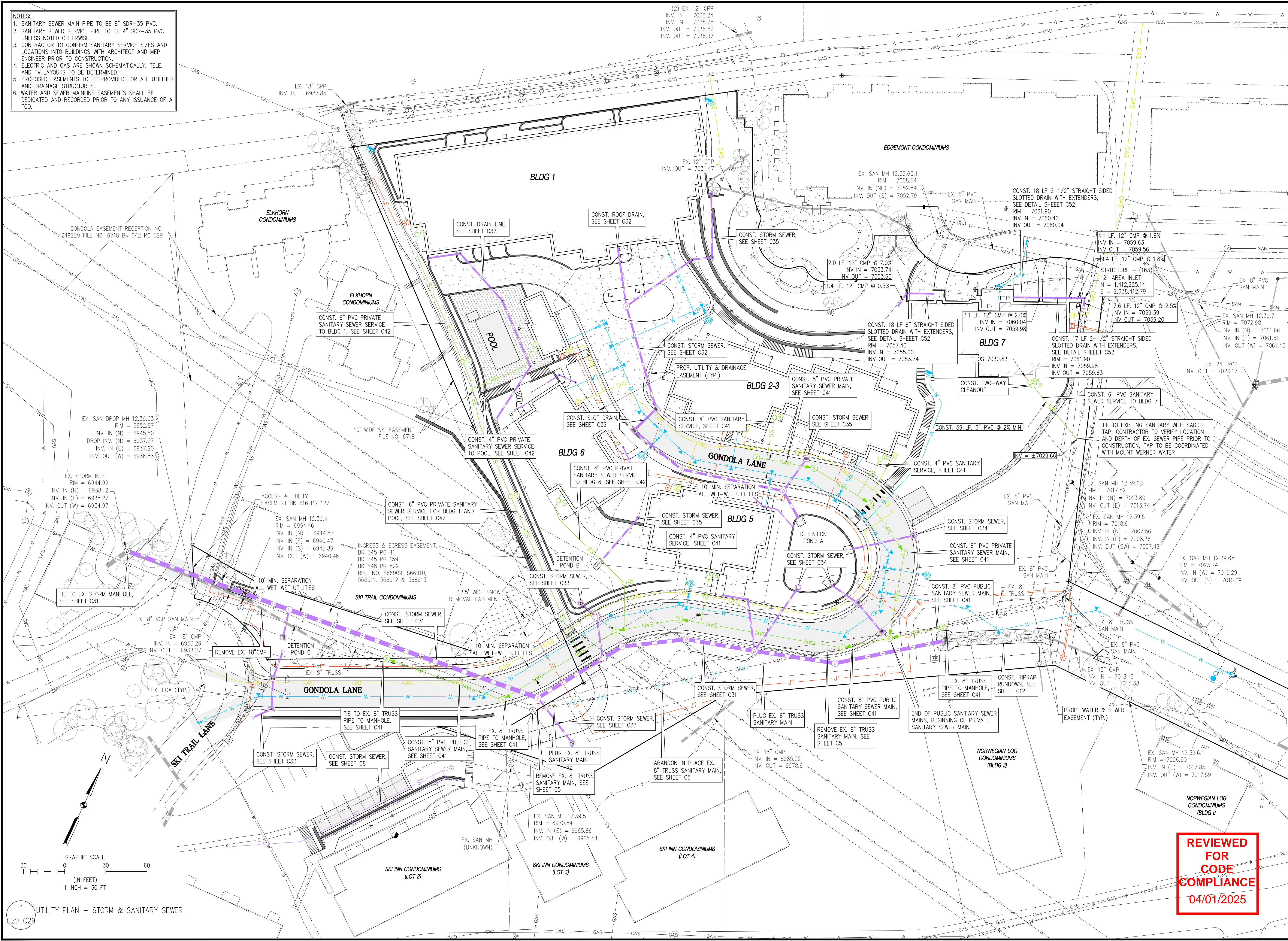






C:\02020235 Astrid-Edgemont Ph2\Drawings\Construction Documents\20235 UTILITY PLAN - SEWER-CD.dwg, 5/15/2024 2:41:53 PM, Steve Batchelder

- NOTES:
1. SANITARY SEWER MAIN PIPE TO BE 8" SDR-35 PVC.
  2. SANITARY SEWER SERVICE PIPE TO BE 4" SDR-35 PVC UNLESS NOTED OTHERWISE.
  3. CONTRACTOR TO CONFIRM SANITARY SERVICE SIZES AND LOCATIONS INTO BUILDINGS WITH ARCHITECT AND MEP ENGINEER PRIOR TO CONSTRUCTION.
  4. ELECTRIC AND GAS ARE SHOWN SCHEMATICALLY, TELE. AND TV LAYOUTS TO BE DETERMINED.
  5. PROPOSED EASEMENTS TO BE PROVIDED FOR ALL UTILITIES AND DRAINAGE STRUCTURES.
  6. WATER AND SEWER MAINLINE EASEMENTS SHALL BE DEDICATED AND RECORDED PRIOR TO ANY ISSUANCE OF A TCO.



BASELINE

Engineering • Planning • Surveying

169 HILLTOP PKWY, SUITE 204 • STEAMBOAT SPRINGS, CO 80477  
P. 970.679.025 • F. 303.940.9599 • www.baselinepc.com

DESIGNED BY	DATE	PREPARED BY	DATE	REVISION DESCRIPTION
SMB	2/29/2024	SMB	2/29/2024	INITIAL SUBMITTAL FOR CITY REVIEW
TJM	5/15/2024	SMB	5/15/2024	CITY COMMENTS
MRB				

CITY OF STEAMBOAT SPRINGS

THE ASTRID  
2410 SKI TRAIL LANE  
UTILITY PLAN - STORM & SANITARY SEWER

FOR AND ON BEHALF OF  
BASELINE CORPORATION

34952  
5-15-24  
PROFESSIONAL ENGINEER

FOR THE DIRECT  
SUPERVISION OF

INITIAL SUBMITTAL	2/29/2024
DRAWING SIZE	24" X 36"
SURVEY FIRM	BASELINE CORPORATION
LANDMARK, INC.	06/03/22
JOB NO.	C020235
DRAWING NAME	UTILITY PLAN - STORM & SANITARY SEWER
SHEET	29 OF 64

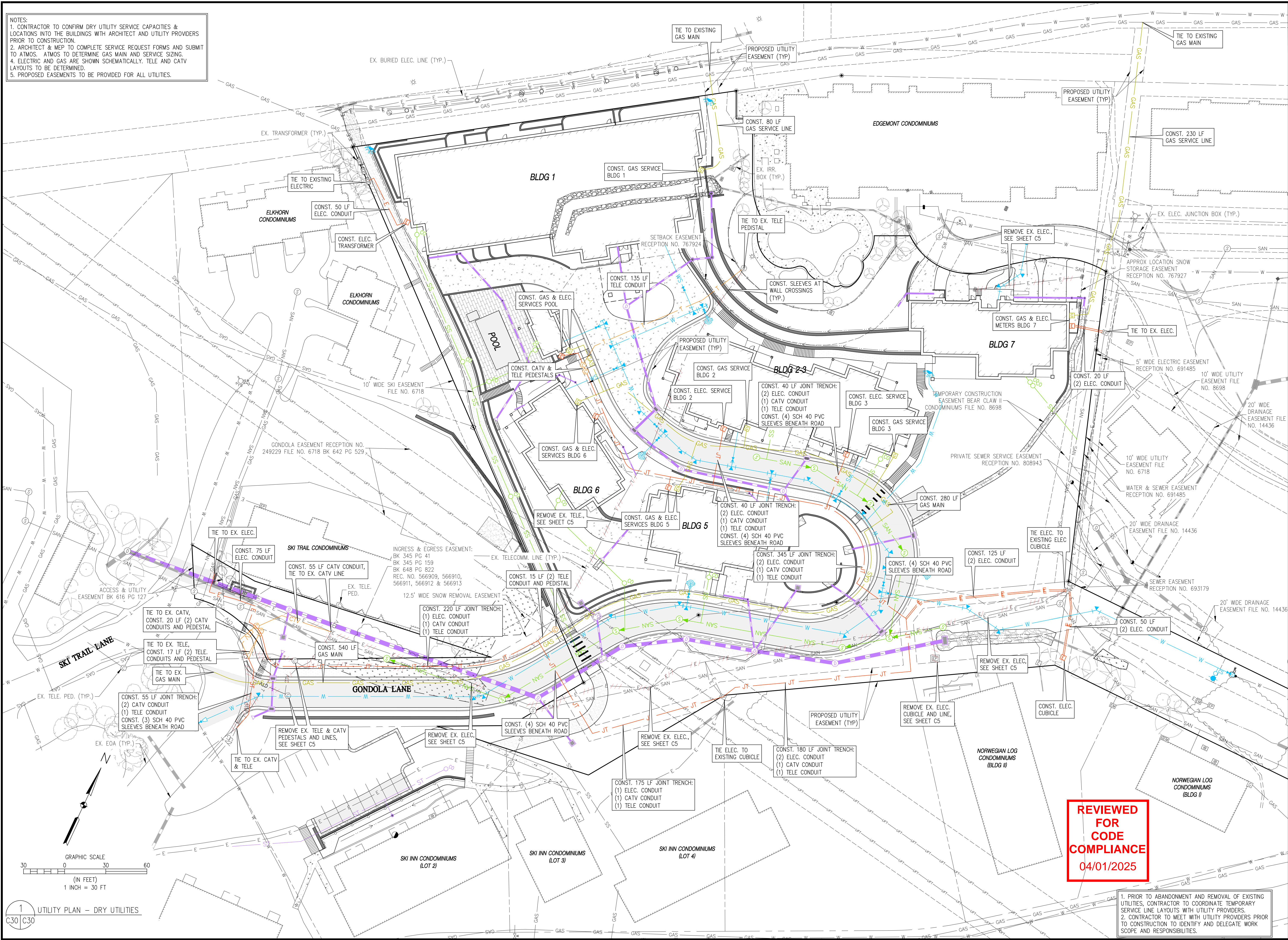
C29

REVIEWED  
FOR  
CODE  
COMPLIANCE  
04/01/2025



C:\0202035 Astrid-Edgemont Ph2\Drawings\Construction Documents\20235 UTILITY PLAN - DRY-CD.dwg, 5/15/2024 2:42:53 PM, Steve Batchelder

NOTES:  
1. CONTRACTOR TO CONFIRM DRY UTILITY SERVICE CAPACITIES & LOCATIONS INTO THE BUILDINGS WITH ARCHITECT AND UTILITY PROVIDERS PRIOR TO CONSTRUCTION.  
2. ARCHITECT & MEP TO COMPLETE SERVICE REQUEST FORMS AND SUBMIT TO ATOMOS. ATOMOS TO DETERMINE GAS MAIN AND SERVICE SIZING.  
3. ELECTRIC AND GAS ARE SHOWN SCHEMATICALLY. TELE AND CATV LAYOUTS TO BE DETERMINED.  
4. PROPOSED EASEMENTS TO BE PROVIDED FOR ALL UTILITIES.



**BASELINE**  
Engineering - Planning - Surveying  
169 HILLTOP PKWY, SUITE 204 • STEAMBOAT SPRINGS, CO 80477  
P. 970.679.025 • F. 303.940.9559 • www.baselinepp.com

DESIGNED BY	SMB	DATE	2/29/2024
PREPARED BY	SMB	DATE	5/15/2024
DRAWN BY	TJM	CITY COMMENTS	
CHECKED BY	MRB	REVISION DESCRIPTION	
		INITIAL SUBMITTAL FOR CITY REVIEW	
		ROUTING COUNTY	
		CITY OF STEAMBOAT SPRINGS	
		THE ASTRID	
		2410 SKI TRAIL LANE	
		UTILITY PLAN - DRY UTILITIES	
		FOR AND ON BEHALF OF	
		BASELINE CORPORATION	
		34952	
		5-15-24	
		PROFESSIONAL ENGINEER	
		FOR AND ON BEHALF OF	
		BASELINE CORPORATION	
		34952	
		5-15-24	
		PROFESSIONAL ENGINEER	
		INITIAL SUBMITTAL	2/29/2024
		DRAWING SIZE	24" X 36"
		SURVEY FIRM	LANDMARK, INC
		SURVEY DATE	06/03/22
		JOB NO.	C020235
		DRAWING NAME	UTILITY PLAN - DRY UTILITIES
		SHEET	30 OF 64

1. PRIOR TO ABANDONMENT AND REMOVAL OF EXISTING UTILITIES, CONTRACTOR TO COORDINATE TEMPORARY SERVICE LINE LAYOUTS WITH UTILITY PROVIDERS.  
2. CONTRACTOR TO MEET WITH UTILITY PROVIDERS PRIOR TO CONSTRUCTION TO IDENTIFY AND DELEGATE WORK SCOPE AND RESPONSIBILITIES.

C30