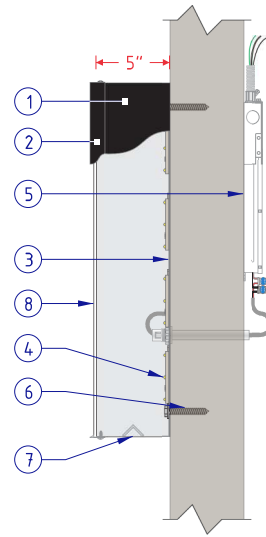


GRAPHIC DETAIL  
SCALE: 1/4" = 1'-0"

12-LINE BOXED SIGN AREA: 126.89 SQ FT

SPRINGHILL  
SUITES  
TOWNEPLACE  
SUITES  
BY MARRIOTT

LED LAYOUT  
NOT TO SCALE



LETTER PROFILE  
NOT TO SCALE

| NO. | PART/DESCRIPTION                                 |
|-----|--|
| 1   | .040" X 5" PREFINISHED BLACK ALUMINUM RETURNS    |
| 2   | 1" BLACK TRIM CAP                                |
| 3   | .063" ALUMINUM BACK                              |
| 4   | GE WHITE 7100K LED'S AS REQUIRED                 |
| 5   | REMOTE POWER SUPPLIES AS REQUIRED                |
| 6   | MOUNTING HARDWARE AS REQUIRED BY SITE CONDITIONS |
| 7   | DRAIN HOLES WITH LIGHT Baffles AS REQUIRED       |
| 8   | 3/16" 7328 WHITE ACRYLIC FACE                    |

NOTES:

- CHANNEL LETTER INTERIORS TO BE PAINTED REFLECTIVE WHITE
- U.L. LISTED
- ELECTRICAL: 3.3 AMPS / 120 VOLTS

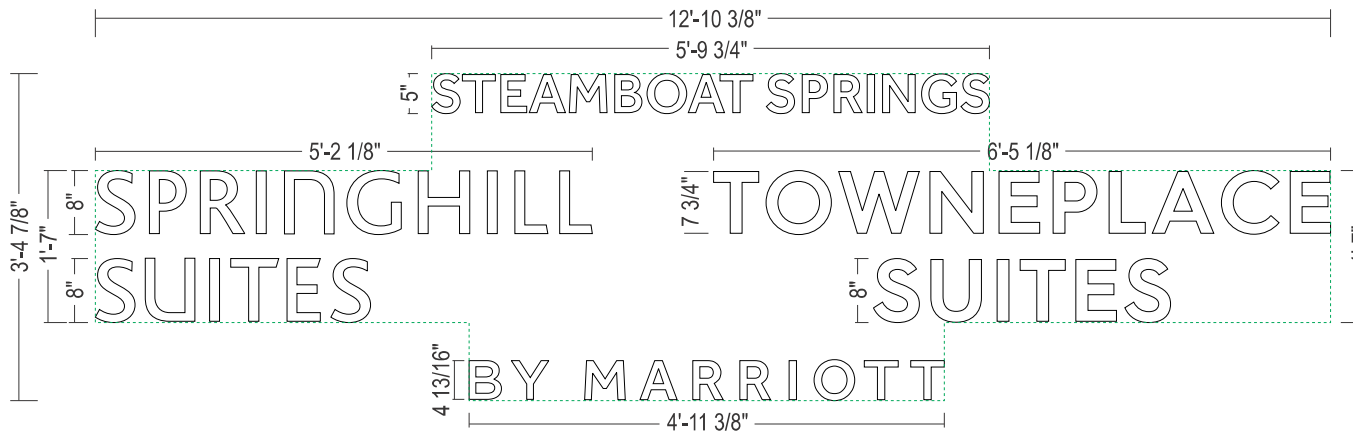
| WALL FASTENER SCHEDULE (ALL FASTENERS TO BE NON-COROSIVE) |   |   |
|---|---|---|
|   | 3/8" THREADED ROD WITH BLOCKING BEHIND WALL | FOR ALL WALL TYPES  |
|   | 3/8" THREADED ROD WITH BEARING PLATES       | FOR WOOD, CMU BLOCK OR CONCRETE WALL SYSTEMS                          |
|   | 3/8" SNAP TOGGLE                            | FOR HOLLOW CMU OR WALL SYSTEMS w/ MIN. 1/2" PLYWOOD SUBSTRATE         |
|   | 3/8" LAG SCREW                              | FOR WOOD FRAME WALL SYSTEMS. 2-1/2" EMBEDMENT IN BLOCKING             |
|   | 3/8" MASONRY SCREW (LARGE DIAMETER TAPCON)  | FOR USE WITH CONCRETE BLOCK, BRICK OR CONCRETE, 2-1/2" EMBEDMENT MIN. |
|   | 3/8" SLEEVE ANCHOR                          | FOR CONCRETE, MASONRY & BRICK 3-3/8" EMBEDMENT MIN.                   |



| NO. | PART / DESCRIPTION                               |
|-----|--|
| 1   | 3/8" FLAT CUT OUT ALUMINUM LETTERS PAINTED WHITE |
| 2   | MOUNTING STUDS, AS REQUIRED                      |

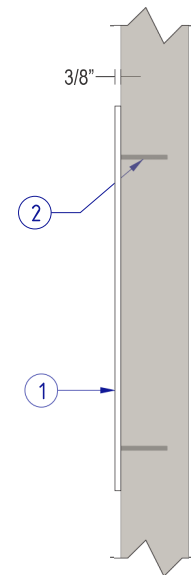
NOTES:

- NON-ILLUMINATED
- MOUNTING TEMPLATE INCLUDED



GRAPHIC DETAIL  
SCALE: 1/2" = 1'-0"

12-LINE BOXED SIGN AREA: 30.25 SQ FT



PIN-MOUNTED  
LETTER PROFILE  
NOT TO SCALE