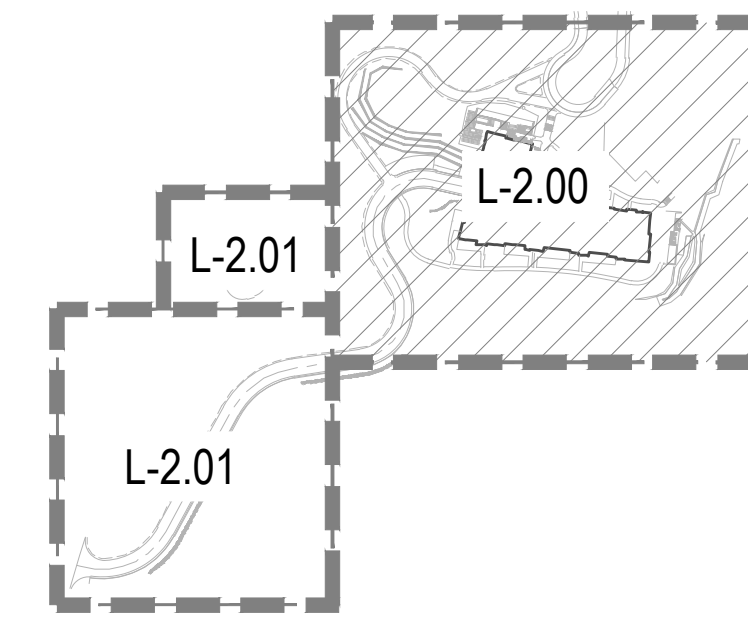


KEY MAP



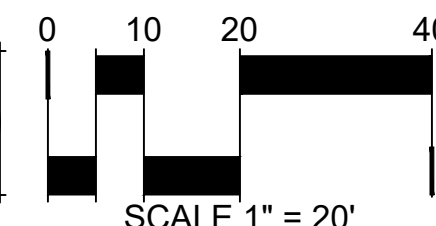
LEGEND

CODE	DESCRIPTION
[Symbol]	MATCHLINE
[Symbol]	PROPERTY LINE
[Symbol]	LIMIT OF WORK
[Symbol]	SWALE LINE

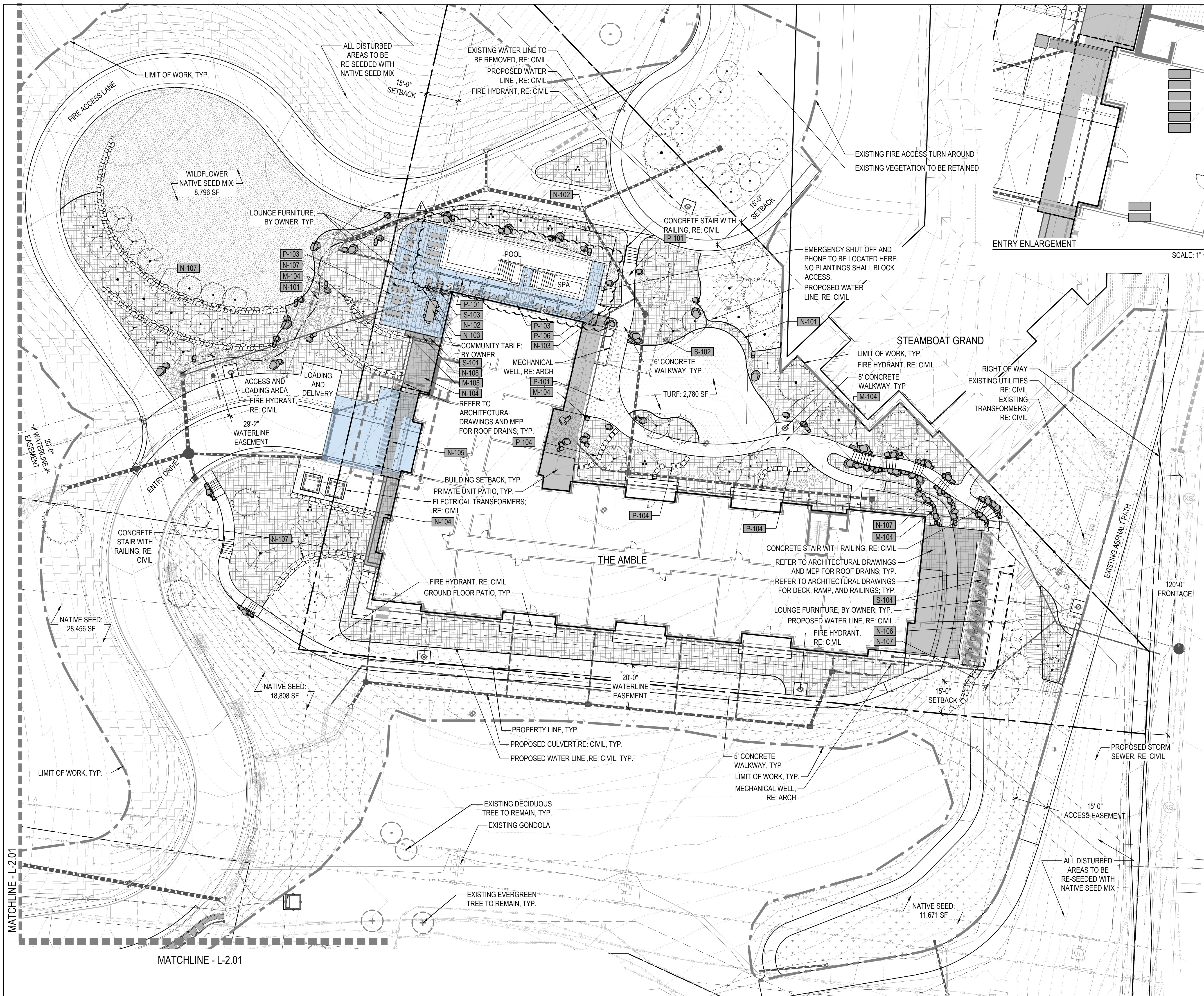
CODE	DESCRIPTION
[Symbol]	M-101 SHRUB BED AREA
[Symbol]	M-102 COBBLE
[Symbol]	M-103 BENDA BOARD EDGER
[Symbol]	M-104 LANDSCAPE BOULDERS
[Symbol]	M-105 GRILL STATION COUNTER TOP
CODE	DESCRIPTION
[Symbol]	P-101 ENHANCED CONCRETE PAVING
[Symbol]	P-102 CONCRETE FLATWORK
[Symbol]	P-103 NATURAL STONE PAVING
[Symbol]	P-104 SANDSTONE STEPPER
[Symbol]	P-105 SNOWMELT SYSTEM; RE: MECHANICAL

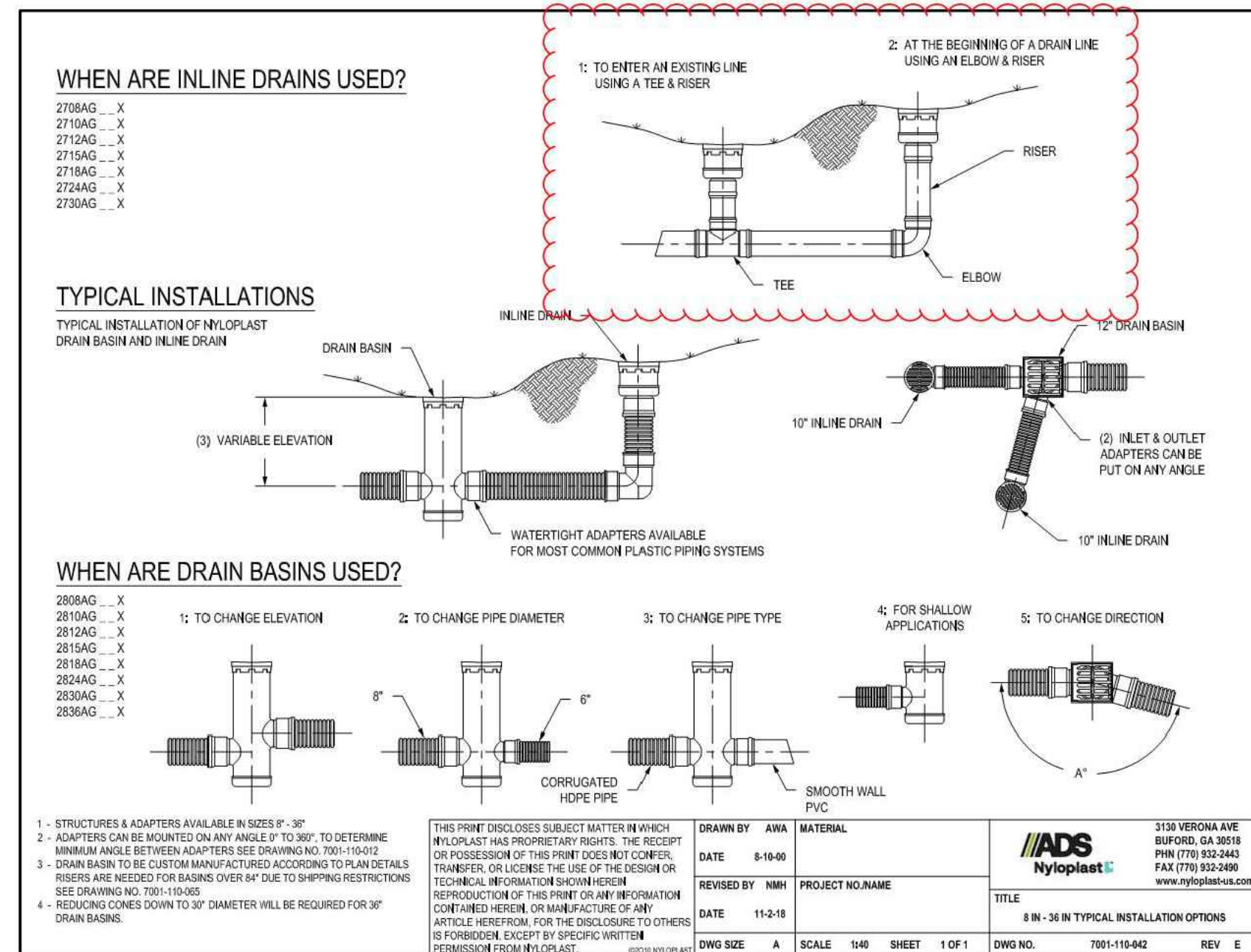
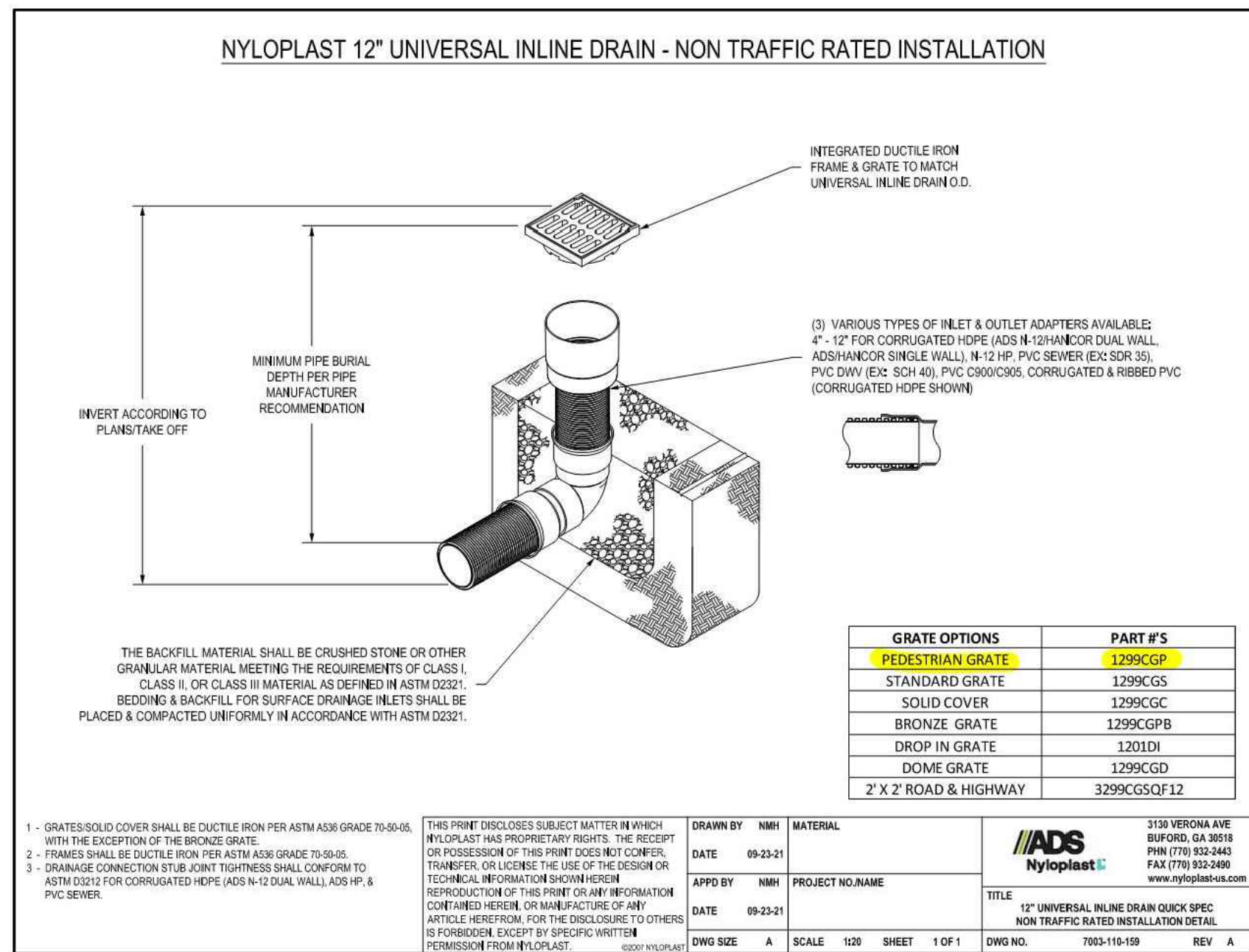
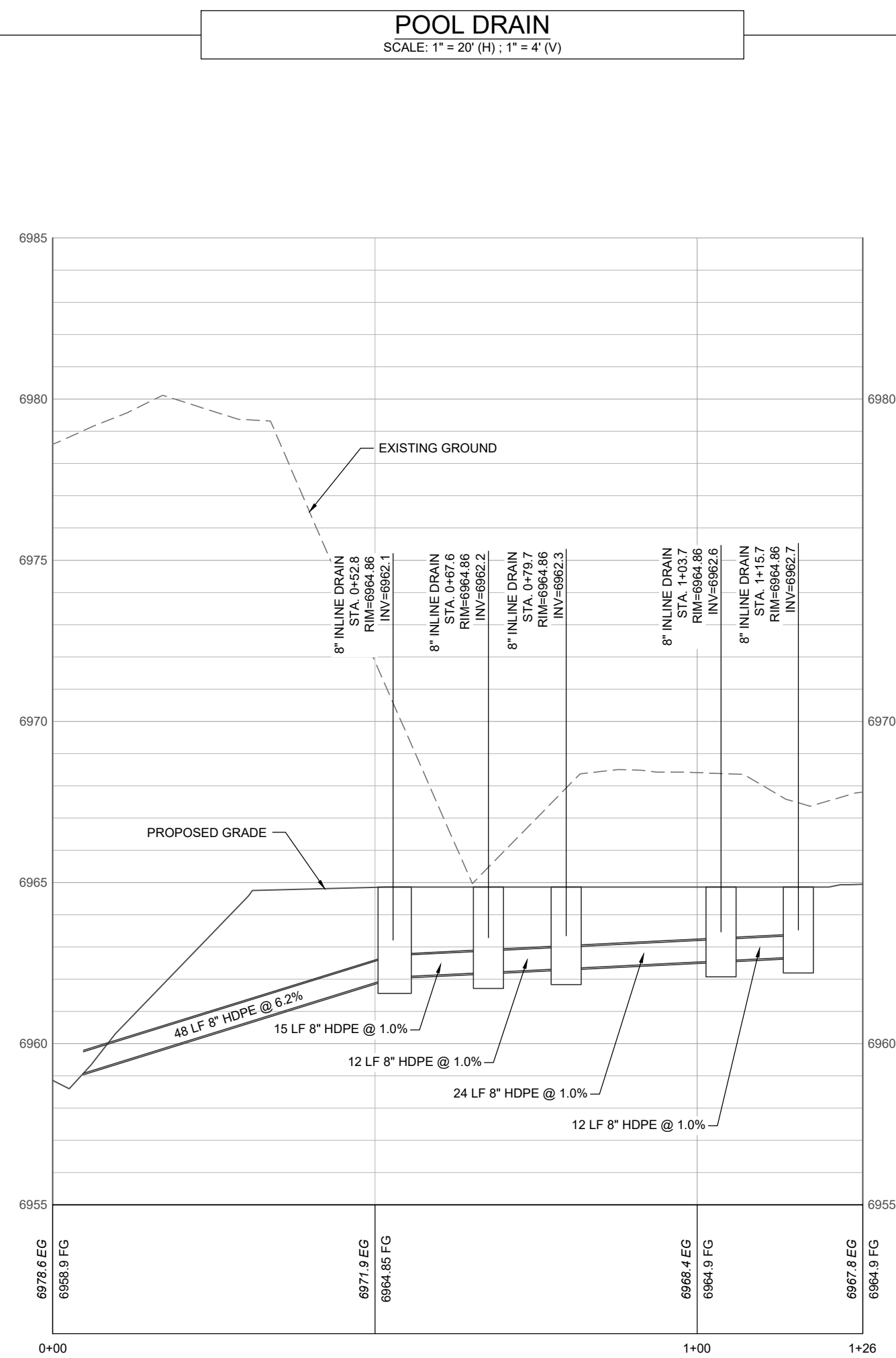
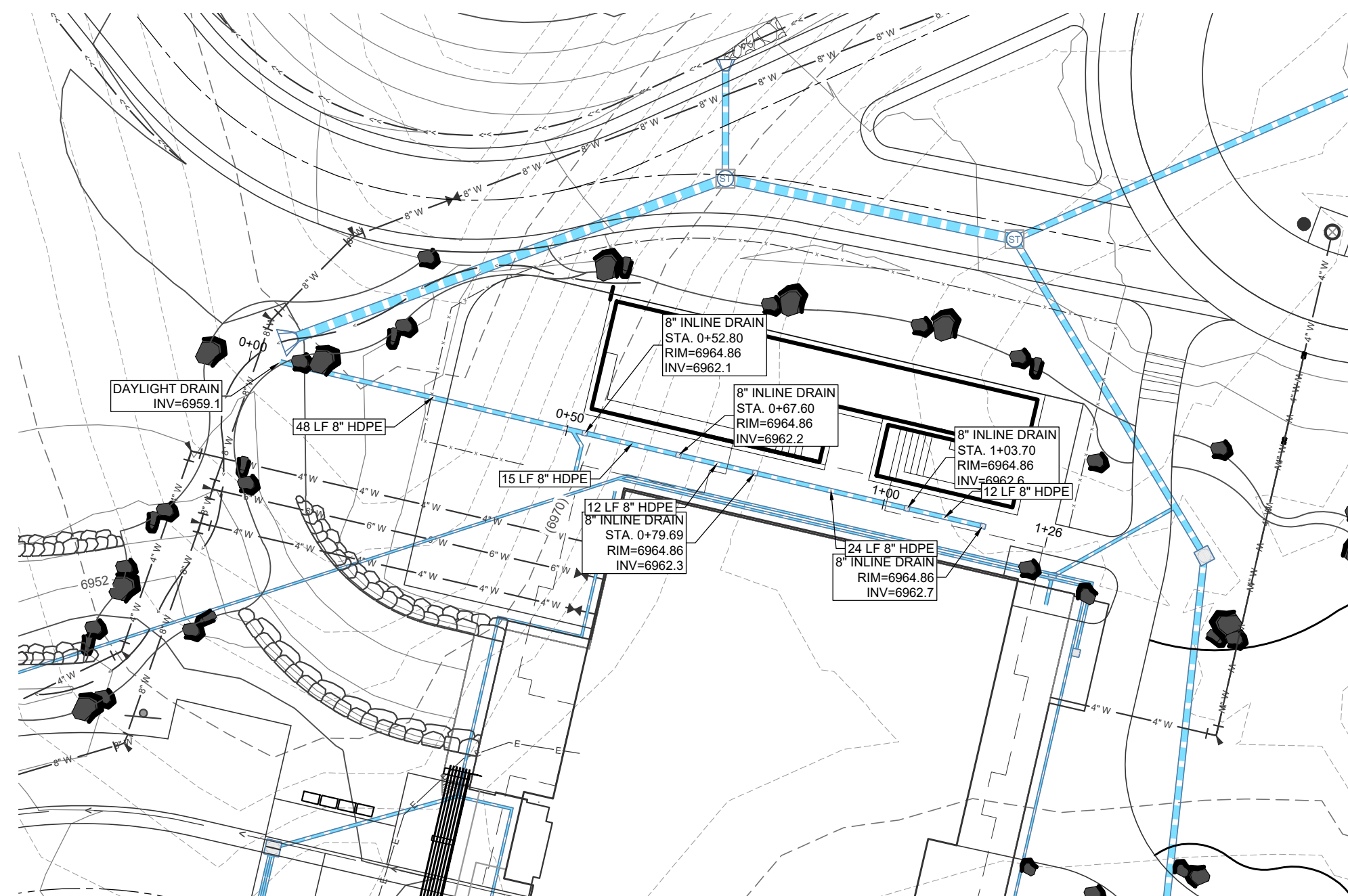
MT. WERNER CIRCLE

CODE	DESCRIPTION	DETAIL
S-101	GRILL	
S-102	PET WASTE STATION	
S-103	LINEAR PLANTER	
S-104	SQUARE PLANTER	
S-105	BENCH	
N-101	COBBLE SWALE	3/L-5.01
N-102	POOL FENCE	1/L-5.02
N-103	POOL FENCE GATE	2/L-5.02
N-104	WEST OVER STRUCTURE PLANTER	3/L-5.02
N-105	ENTRY DRIVE GREEN ROOF	4/L-5.02
N-106	EAST GREEN ROOF	5/L-5.02
N-107	LANDSCAPE WALLS; RE: CIVIL FOR HEIGHTS	5/L-5.01
N-108	OUTDOOR KITCHEN	7/L-5.01



SCALE 1" = 20'





INLET SCHEDULE					
STRUCTURE	SIZE/DIAMETER (in.)	MODEL	GRATE	SUMP (2-FT)	TRAFFIC RATED
ST-1.0	24	NYLOPLAST	2'x2' ROAD & HIGHWAY GRATE	X	X
ST-2.0	24	NYLOPLAST	2'x2' ROAD & HIGHWAY GRATE	X	X
ST-3.0	30X40	DENVER TYPE 16	DENVER TYP 16	X	X
ST-4.0	15	NYLOPLAST	15" DOMED GRATE	X	-
ST-5.0	30X40	DENVER TYPE 16	DENVER TYP. 16	X	X
ST-6.1	18	NYLOPLAST	2'x2' ROAD & HIGHWAY GRATE	X	-
ST-7.1	15	NYLOPLAST	15" DOMED GRATE	X	-
ST-7.2	12	NYLOPLAST	12" DOMED GRATE	X	-
ST-7.3	15	NYLOPLAST	15" DOMED GRATE	X	-
ST-7.4	12	NYLOPLAST	12" DOMED GRATE	X	-
ST-8.1	18	NYLOPLAST	2'x2' ROAD & HIGHWAY GRATE	X	X
ST-8.2	30	NYLOPLAST	SOLID COVER	-	X
ST-8.2.1	18	NYLOPLAST	18" DOMED GRATE	X	-
ST-8.2.2	12	NYLOPLAST	2'x2' ROAD & HIGHWAY GRATE	X	X
ST-8.3	15	NYLOPLAST	2'x2' ROAD & HIGHWAY GRATE	X	X
ST-8.4	12	NYLOPLAST	2'x2' ROAD & HIGHWAY GRATE	X	X
ST-9.1	24	NYLOPLAST	SOLID COVER	-	X
ST-9.2	24	NYLOPLAST	SOLID COVER	-	X
ST-9.3	15	NYLOPLAST	15" DOMED GRATE	X	-
ST-9.3.1	12	NYLOPLAST	12" DOMED GRATE	-	-
ST-9.4	15	NYLOPLAST	15" DOMED GRATE	X	-
ST-9.5	12	NYLOPLAST	12" DOMED GRATE	X	-

CALL UTILITY NOTIFICATION CENTER OF
COLORADO®

811

Know what's below.
Call before you dig.

CALL 2 BUSINESS DAYS IN ADVANCE BEFORE YOU
DIG, GRADE, OR EXCAVATE FOR THE MARKING OF
UNDERGROUND UTILITIES

COLORADO LICENSED
THEO CARLSON
50740
PROFESSIONAL ENGINEER

NOT VALID WITHOUT ORIGINAL
SIGNATURE AND DATE