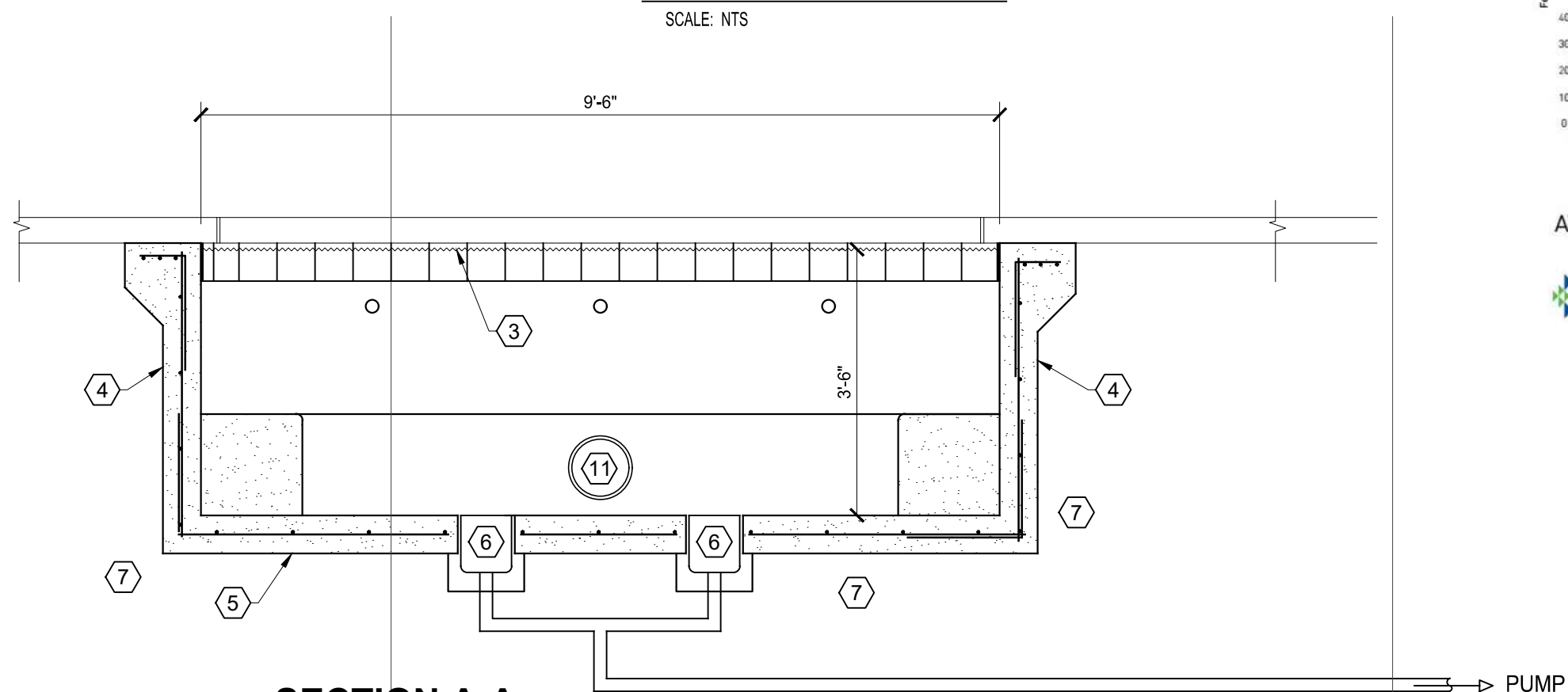


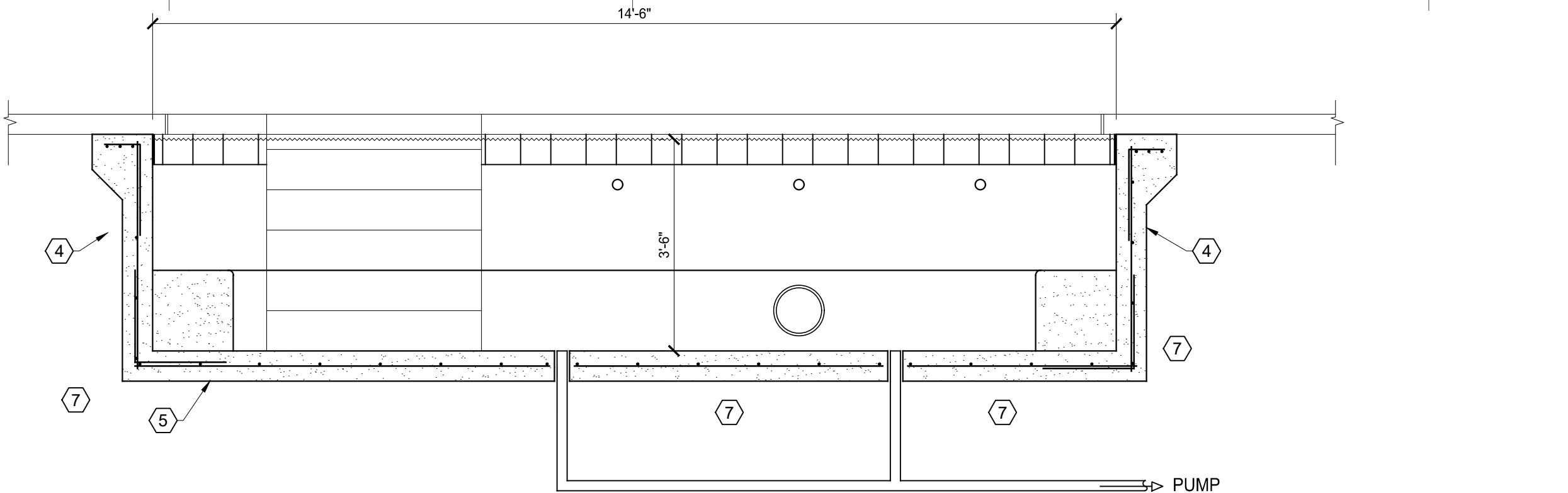
SPA PLAN VIEW

SCALE: NTS



SECTION A-A

SCALE: NTS



SECTION B-B

SCALE: NTS

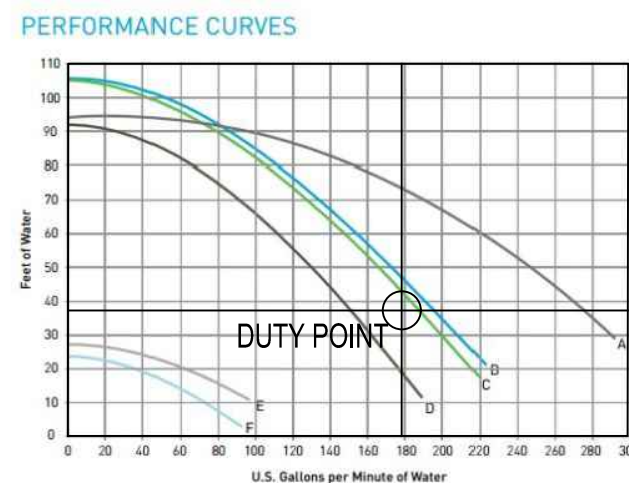
SPECIAL NOTE

- SPA SHALL HAVE A MINIMUM OF 5-FT OF CLEARANCE FROM ALL WALLS.

SHEET NOTES:

- SPA IS INSIDE THE NEW HOLIDAY INN EXPRESS IN STEAMBOAT SPRINGS CURRENTLY UNDER CONSTRUCTION. SPA AREAS NOT ACCESSIBLE WITHOUT FACILITY KEY. ALL DOORS AND GATES TO POOL AREA SHALL BE SELF CLOSING AND SELF-LATCHING (BY OTHERS).
- LATCHES SHALL BE OF ONE OF THE FOLLOWING TYPES:
 - CONTINUOUSLY LOCKED
 - CODED
 - OR RAISED 60 IN. OR MORE IN HEIGHT
- GATES SHALL HAVE A SEPARATE LOCKING METHOD TO LOCK DOORS WHEN POOL IS CLOSED.
- HAND ACTIVATED DOOR OPENING HARDWARE HEIGHT SHALL BE AT A MIN. HEIGHT OF 60 IN.
- POOL AREA DECK (INSTALLED BY OTHERS) SHALL BE IMPERVIOUS TO WATER, CLEANABLE, WATER-SEALED, AND SLIP RESISTANT. CONCRETE W/ LIGHT BROOM FINISH.
- POOL WALLS AND FLOORS MUST BE WHITE OR LIGHT PASTEL PLASTER.
- ALL STEPS AND POOL SURFACES SHALL HAVE A NON-SLIP SURFACE.
- CONTRASTING STRIPE
 - ALL EDGES OF STEPS AND/OR BENCHES SHALL HAVE A 2 IN. STRIPE OF CONTRASTING COLOR ON THE HORIZONTAL FACE.
 - ALL EDGES OF LEISURE DECKS SHALL HAVE A 2 IN. STRIPE OF CONTRASTING COLOR ON BOTH THE HORIZONTAL AND VERTICAL SURFACE.
 - 4 IN. STRIPE OF CONTRASTING COLOR ON POOL WALLS AND FLOOR AT ANY GRADE BREAK GREATER THAN 1:12
- HOSE BIBBS WITH BACK FLOW PREVENTION SHALL BE INSTALLED SO THAT ALL AREAS OF THE DECK CAN BE REACHED BY A 150 FT. HOSE.
- THERE SHALL BE NO STEPPING POINTS, INCLUDING POSTS AND CABLE BOXES, NEAR THE FENCE.
- SIGNS SHALL BE INSTALLED PRIOR TO PRE-OPENING INSPECTION.
- DECKING SHALL BE SLOPED AT A MIN OF 1/8 IN. PER FT. AND A MAX OF 1/4 IN. PER FT. AWAY FROM POOL AND BUILDING TO ENSURE POSITIVE DRAINAGE TOWARD LANDSCAPE AREAS AND/OR DECK DRAINS.

DECK AREA: 492 SF
WATER AREA: 236 SF
DECK TO WATER RATIO: 1 TO 2.1

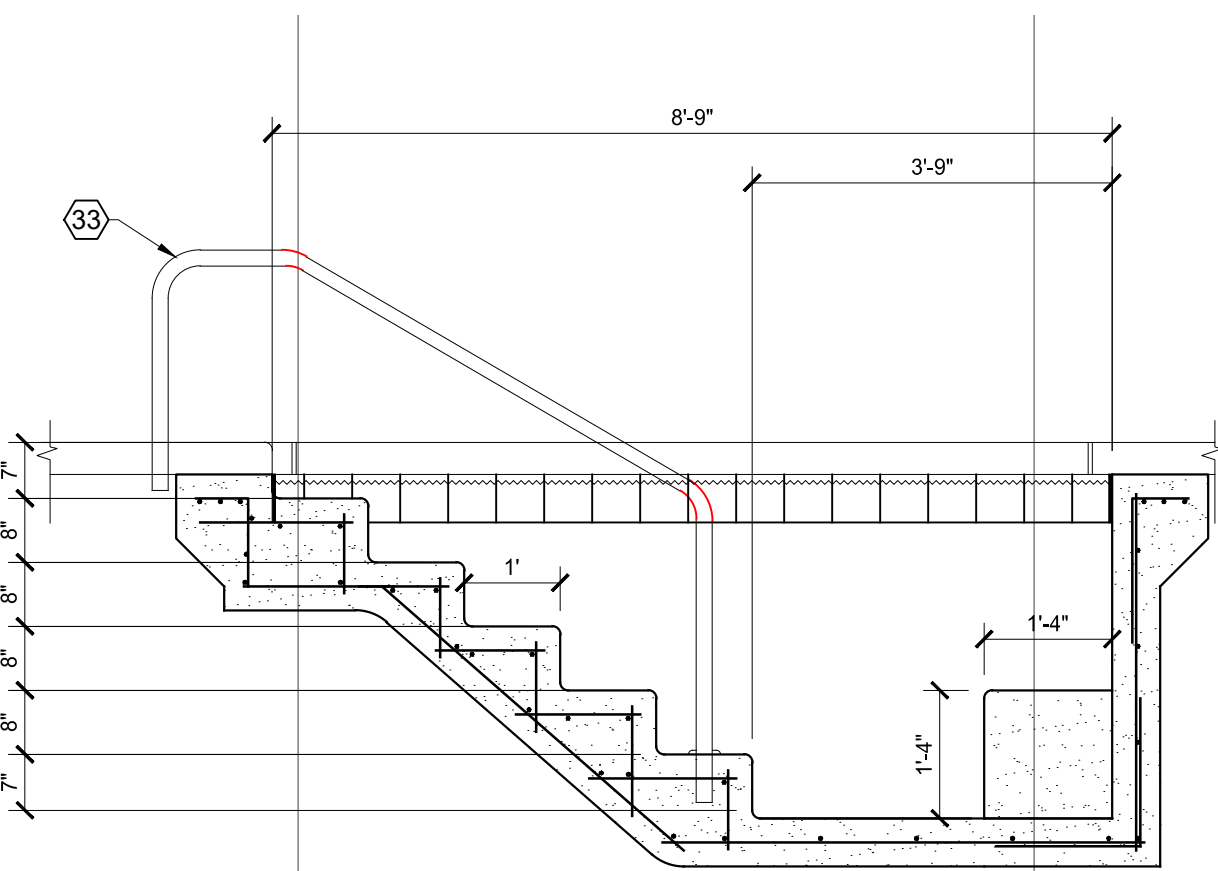


AVAILABLE FROM:



Performance Curve	Model	Description
A	XFE-20	5 HP, High Efficiency
A	XFK-20	5 HP, 3-Phase, TEFC Motor
B	XFE-12	3 HP, High Efficiency
B	XFK-12	3 HP, Standard Efficiency
C	XFD-12	3 HP, 2-Speed
D	XFK-12	3 HP, 3-Phase, TEFC Motor
D	XFE-8	2 HP, High Efficiency
D	XFK-8	2 HP, Standard Efficiency
D	XFD-8	2 HP, 2-Speed
D	XFE-30	2.5 HP, High Efficiency, Upgraded
D	XFK-30	2.5 HP, Standard Efficiency, Upgraded
D	XFD-30	2.5 HP, 2-Speed, Upgraded
D	XFK-8	2 HP, 3-Phase, TEFC Motor

PUMP CURVE



SECTION C-C

SCALE: NTS

REVIEWED
FOR
CODE
COMPLIANCE
11/04/2024

KEYED NOTES

- GENERAL: ALL WORK AND MATERIALS SHALL CONFORM TO ALL APPLICABLE CODES AND REGULATIONS.

POOL CONSTRUCTION SHALL BE REINFORCED GUNITE AS FOLLOWS:

GUNITE: 4,000 PSI (MIN)
REINFORCING: GRADE 60 (ASTM A615)
AMERICAN CONCRETE INSTITUTE
SPECIFICATIONS:
(ACI 318, ACI 506, ACI C06.2)
- ADA COMPLIANT SWIMMING POOL LIFT, AQUATRAM, OAE
- WATERLINE
- 6" GUNITE WALL WITH #3 BARS AT 12" CENTERS EACH WAY (TYP)
- 6" GUNITE BOTTOM WITH #3 BARS AT 12" CENTERS EACH WAY WHERE WATER
- 8" MAINDRAIN PARAMOUNT SDX2 HIGH FLOW SAFETY DRAIN PRODUCT NO. 004-162-2215-01 WITH HYDROSTATIC RELIEF VALVE (HAYWARD, AQUASTAR, OAE.)
- COMPACT TO 95% OF MAXIMUM DENSITY AT OPTIMUM MOISTURE CONTENT PER ASTM D-1557.
- 4" CONCRETE SLAB WITH 6X6, W1.4 X W1.4 WWF ON COMPACTED EARTH / FILL SLOPE FROM SPA 1/2" PER FOOT: (MIN)
- NOT USED
- NON-SLIP 6" DEPTH AND NO DIVING MARKER
- RECESSED LIGHT
- FILL & AUTOFILL PER DETAILS SHEET 3
- SKIMMER (SEE DETAIL 3/2) (PENTAIR STA-RITE U-3 SKIMMER NO. 08650-1404, 8.5" WIER, OAE.)
- 3-#3 BARS CONTINUOUS AT BOND BEAM: (LAP 18" MIN)
- #3 BAR AT 12" CENTERS VERTICAL
- #3 BAR AT 12" CENTER HORIZONTAL
- TRANSVERSE REINFORCING: #3 BAR AT 12" CENTERS, LAP INTO WALL 18"
- LONGITUDINAL REINFORCING: #3 BAR AT 12" CENTERS.
- 6" GUNITE BOTTOM WITH #3 BAR AT 12" CENTERS EACH
- 6" FROST PROOF TILE
- NOT USED
- NOT USED
- CONDUIT
- ELECTRICAL PANEL (SEE ELECTRICAL)
- RETURN
- NOT USED
- ELECTRICAL: BONDING SHALL BE AS PER NEC 680-22
PER NEC 680-20 GROUND FAULT PROTECTION SHALL BE AS
680-21 JUNCTION BOX 8" ABOVE DECK AS PER NEC
- TO PUMP SUNCTION
- GUNITE.
- 3-INCH PVC SCHEDULE 80
- RECESSED TREADS - MIN. DEPTH OF 5-INCHES AND WIDTH NOT LESS THAN 12-INCHES. SLIP RESISTANT SURFACE.
- JET
- SR SMITH THREE-BEND STAIR RAIL W/ EXTENSION ON POOL LEG PRODUCT NO. 3HR-R-4; STAINLESS STEEL TUBE WITH MIRROR FINISH
- DECK TRENCH DRAIN
- SUMP PIT - INSTALL PUMP AND OUTLET PIPE TO SANITARY WASTE LINE

NOTE

DESIGN IS IN ACCORDANCE WITH 2015 IBC INTERNATIONAL BUILDING CODE.

WATER TURNOVER

SPA TURN OVER RATE IS APPROXIMATELY 28 MINUTES.

Product Specifications

TITRON II SAND FILTERS										
Turnover Capacity (Gallons)										
Product Model	Effective Filtration Area (Sq Ft)	Flow Rate (GPM)	Flow Rate (GPM) Comm	8 Hour			Filter Media Pea Gravel Required (Lbs)	Filter Media Sand Required (Lbs)	All Sand Required (Lbs)	Carton Qty
				10 Hour	12 Hour	12 Hour				
140236 TR 40	1.92	38	38	19240	22800	27360	50	125	175	1
140249 TR 60	2.46	49	49	23520	29400	35280	50	175	225	1
140294 TR 60	3.14	63	63	30240	37800	45360	75	250	325	1
140210 TR 100	4.91	98	74	47040	58800	70560	150	450	600	1
140243 TR 140	7.06	141	106	67680	84600	101520	275	650	925	1

FILTER RATES

2 EACH TR100 REQUIRED AT 98 GPM EACH

EQUIPMENT LIST

EQUIPMENT	MANUFACTURER	MODEL	SIZE
HEATER	RAYPAK	R-266A	266,000 BTU
CHLORINE FEEDER	RAINBOW LIFE GUARD	2000	2-INCH
DIGITAL CHLORINE CONTROLLER	ROLA-CHEM	300	
SPA CIRCULATION	PENTAIR	WISPERFLOW	1 HP
SPA JET	PENTAIR	WISPERFLOW	2 HP
FILTER	PENTAIR	TR-20	
SKIMMERS	STARBRITE	SP-1070	

ELECTRICAL CODE REQUIREMENTS

- BONDING WIRING SHALL BE IN ACCORDANCE WITH ARTICLE 680.26B 2017 NEC CODE. BONDING WIRING SHALL BE 8 AWG OR LARGER SOLID COPPER CONDUCTOR TO THE PUMP AND PLACED AROUND POOL AND SPA 18-INCHES TO 24-INCHES FROM WATER EDGE.
- GROUND FAULT INTERRUPTER PROTECTION SHALL BE PROVIDED IN ACCORDANCE WITH ARTICLE 680.23B FOR THE RECESSED LIGHTS WITHIN SPA AND POOL.
- PROVIDE A JUNCTION BOX AT 8-INCHES ABOVE POOL DECK IN AN APPROPRIATE LOCATION IN ACCORDANCE WITH ARTICLE 680.24 OF THE 2017 NEC.

ELECTRICAL EQUIPMENT POWER SCHEDULE

EQUIPMENT	AMPS
HEATER	5
CHLORINE FEEDER	5
DIGITAL CHLORINE CONTROLLER	2
SPA CIRCULATION	11.8
SPA JET	16.8
FILTER	0
LIGHTS	2
TOTAL	54.4

GENERAL REQUIREMENTS

- MAXIMUM WATER VELOCITY IN BRANCH SUCTION WILL BE LESS THAN 6 FEET PER SECOND.
- MAXIMUM WATER VELOCITY IN CIRCULATING PIPING SYSTEM IS LESS THAN 10 FEET PER SECOND.
- A VACUUM BREAKER SHALL BE PROVIDED AND LOCATED ON THE DISCHARGE SIDE OF THE FINAL VALVES AND BY AT LEAST 6-INCHES ABOVE THE OVERFLOW RIM.
- ALL EQUIPMENT, PIPING AND VALVES SHALL COMPLY WITH CITY OF ALBUQUERQUE ADOPTED CODES.
- A FLOOR DRAIN WILL BE PROVIDED IN THE MECHANICAL ROOM AND DISCHARGE TO THE SANITARY SEWER.

Date:

SEPTEMBER 2024

Designed For:

Master Pools & Spas, LLC.

4600 Lincoln Rd. NE, Ste 24

ALBUQUERQUE, NEW MEXICO 87109

SWIMMING POOL AND SPA

PLAN VIEW AND SECTION

HOLIDAY INN EXPRESS

3350 S. LINCOLN AVE

STEAMBOAT SPRINGS, COLORADO 80487

DATE:

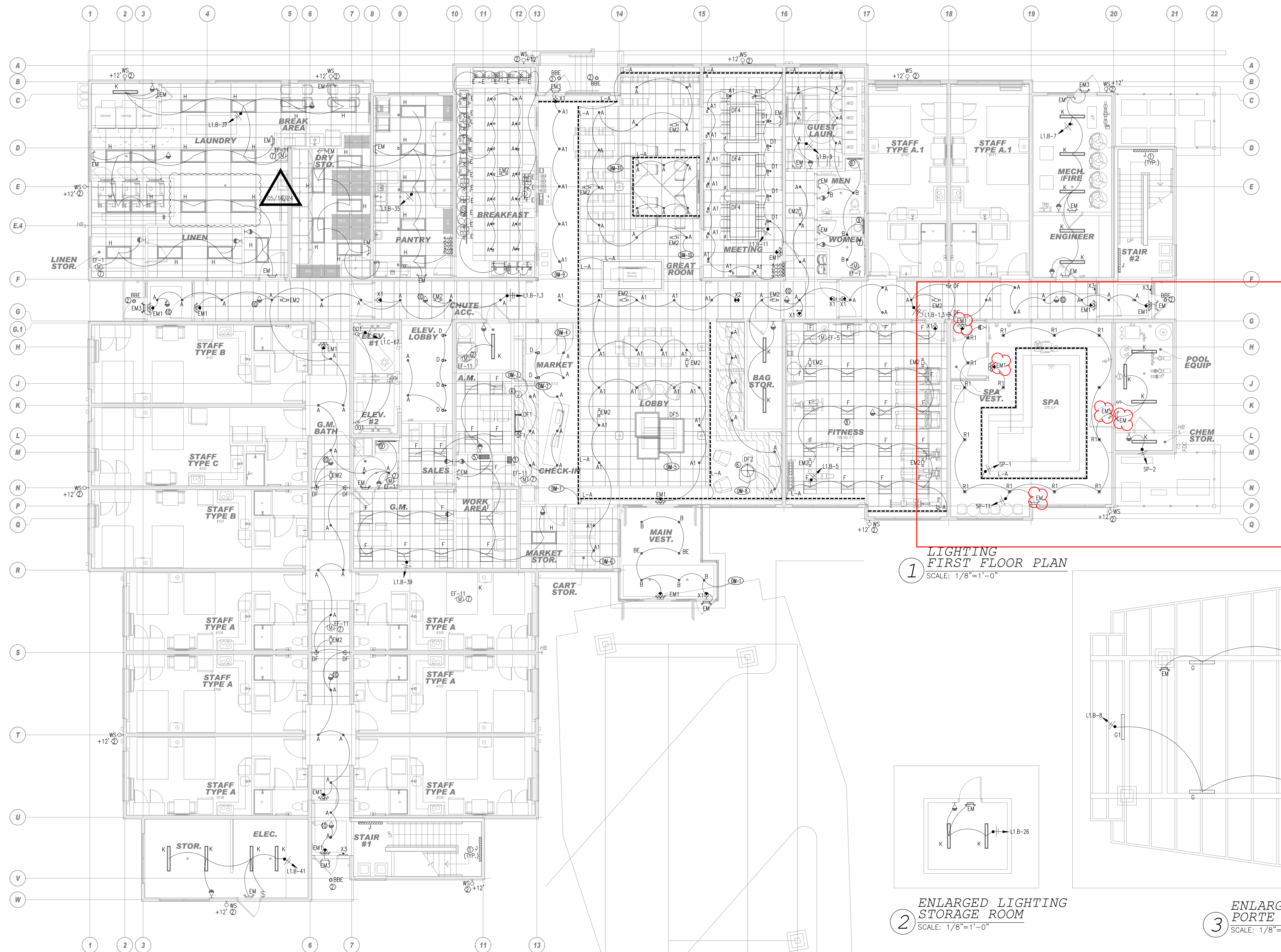
SEPTEMBER 5, 2024

SHEET:

1

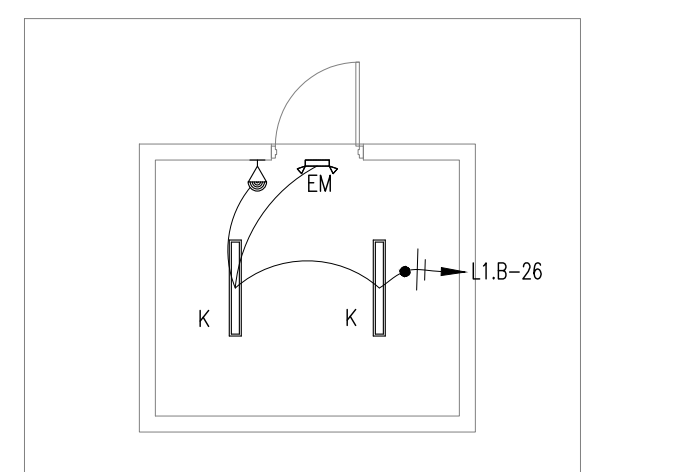
3

LICENSE 403651

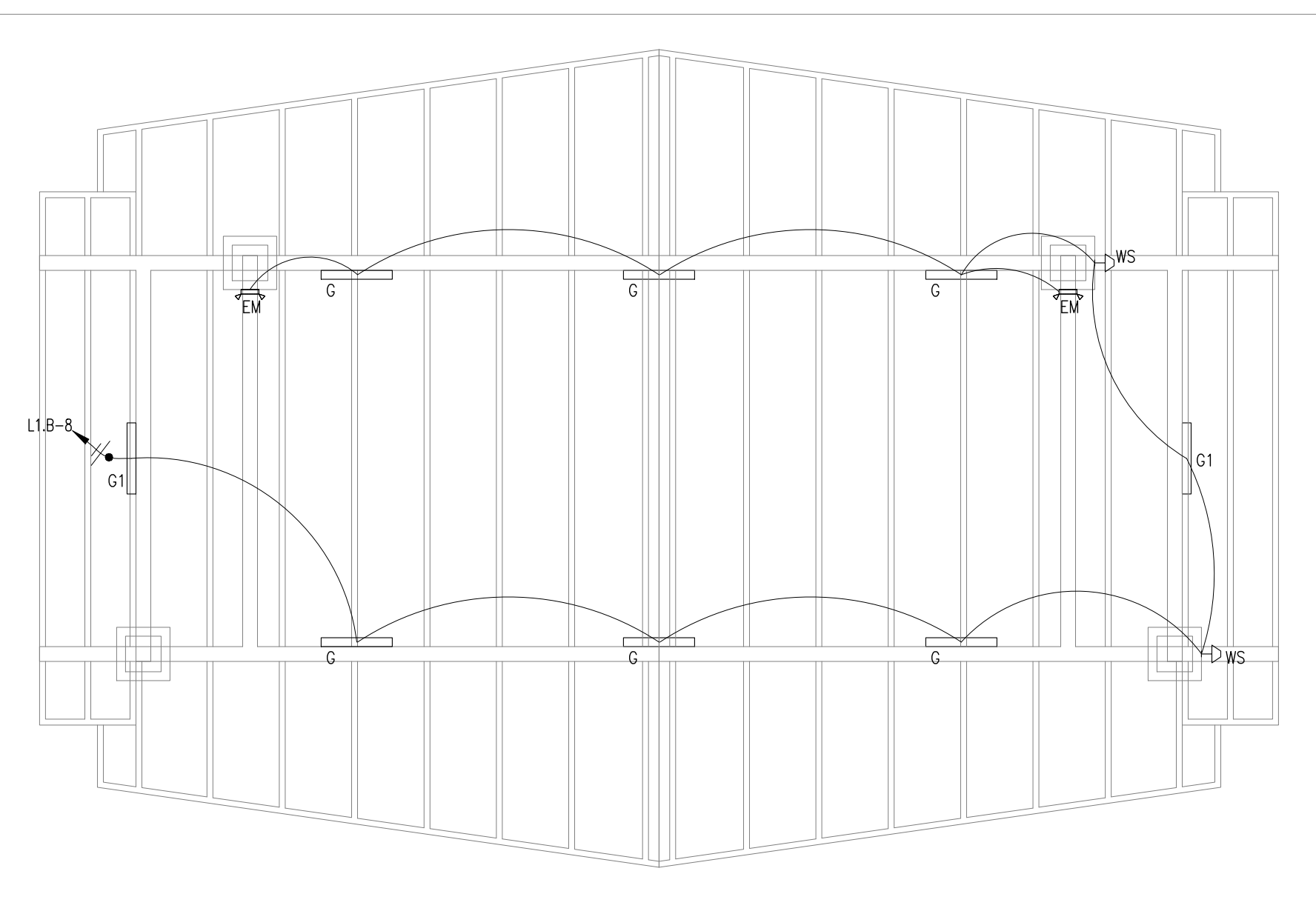


REVIEWED
FOR
CODE
COMPLIANCE
11/04/2024

1 LIGHTING FIRST FLOOR PLAN
SCALE: 1/8"=1'-0"

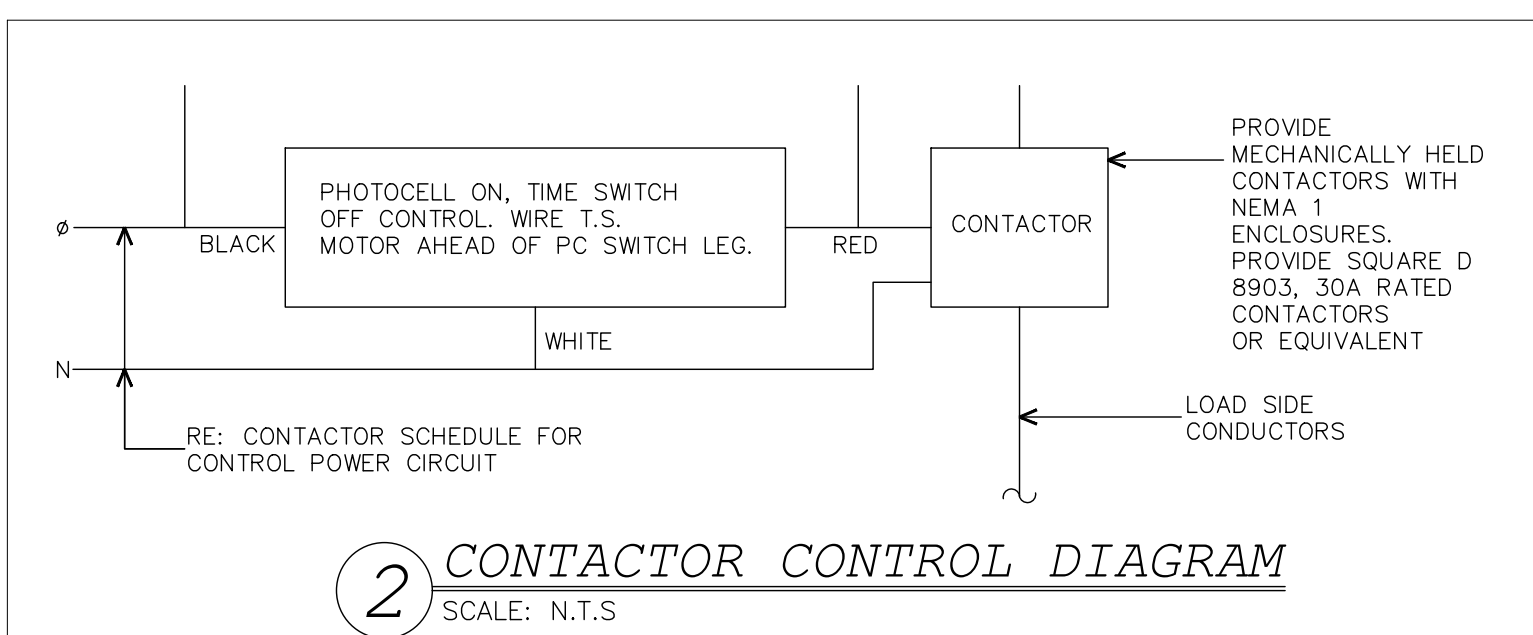


2 ENLARGED LIGHTING STORAGE ROOM
SCALE: 1/8"=1'-0"



3 ENLARGED LIGHTING PORTE COCHERE
SCALE: 1/8"=1'-0"

- KEYED NOTES:**
- CONNECT ALL TYPE "J" LIGHTS AT STAIRCASE TO L1B-33, USING 2#10, 1/2". CONTRACTOR WILL PROVIDE A LOCK-ON FEATURE FOR THIS CIRCUIT AS REQUIRED BY NEC 700.12(1)(2)(3).
 - CONNECT ALL TYPE "BBE", "WS" TO L1B-18-20, USING 2#10, 1/2". REFER TO ARCHITECTURAL ELEVATION FOR EXACT MOUNTING HEIGHT AND LOCATION.
 - PROPOSED LOCATION FOR TOUCH MINI DIMMING CONTROL STATION.
 - POWER SOURCE FOR BRAND SIGN.
 - LIGHTING SUB-PANEL & DIMMING (CENTRAL DIMMING CONTROL PANEL).
 - J.BOX FOR DECORATIVE LIGHT (SELECTED BY OWNER).
 - THE FAN SHALL RUN CONTINUOUSLY AND BE KEPT UNSWITCHED FROM OCCUPANCY SENSOR.
 - LIGHT FIXTURES SHALL BE REMAINED ON (KEPT UN-SWITCHED FROM OCCUPANCY SENSOR).
 - PROVIDE MIRROR LIGHT P-308. VERIFY LOCATION WITH ARCHITECTURAL/ID PLAN PRIOR TO INSTALLATION.
 - OCCUPANT SENSOR CONTROLS IN CORRIDORS SHALL UNIFORMLY REDUCE LIGHTING POWER TO NOT MORE THAN 50 PERCENT OF FULL POWER WITHIN 20 MINUTES AFTER ALL OCCUPANTS HAVE LEFT THE SPACE.



2 CONTACTOR CONTROL DIAGRAM
SCALE: N.T.S.

- GENERAL NOTES:**
- FOR ALL HOME RUNS (FROM UNITS) 100 FT OR MORE, THE ELECTRICAL CONTRACTOR HAS TO CHECK THE VOLTAGE DROP AND SELECT THE SUITABLE CABLES SIZE TO COMPLY WITH THE MAXIMUM ALLOWED VOLTAGE DROP FOR THE FEEDER CONDUCTORS (3%). THE MAXIMUM COMBINED VOLTAGE DROP ON BOTH INSTALLED FEEDER CONDUCTORS AND BRANCH CIRCUITS CONDUCTORS TO THE FARTHEST CONNECTED LOAD OR OUTLET SHALL NOT EXCEED 5 PERCENT.
 - THE CONTRACTOR SHALL VERIFY WITH THE OWNER FOR THE APPROVED BRANDS/ MODELS OF THE LOW VOLTAGE SYSTEM DEVICES (CAMERA, CARD READER, WIRELESS ACCESS POINT, ETC.) AND PROVIDE ALL NECESSARY ACCESSORIES TO COMPLETE THE WIRING, POWER SUPPLY FOR THE DEVICES AS PER THE MANUFACTURER SPECIFICATIONS/ INSTALLATION GUIDELINES.
 - LIGHTING FOR ALL EXTERIOR APPLICATIONS SHALL HAVE AUTOMATIC CONTROLS CAPABLE OF TURNING OFF EXTERIOR LIGHT WHEN SUFFICIENT DAYLIGHT IS AVAILABLE OR WHEN THE LIGHT IS NOT REQUIRED DURING NIGHTTIME HOURS. LIGHTING NOT DESIGNATED FOR DUSK TO DAWN OPERATION SHALL BE CONTROLLED BY AN ASTRONOMICAL TIME SWITCH. LIGHTING DESIGNATED FOR DUSK TO DAWN SHALL BE CONTROLLED BY AN ASTRONOMICAL TIME SWITCH OR PHOTOSENSOR. ASTRONOMICAL TIME SWITCHES SHALL BE CAPABLE OF RETAINING PROGRAMMING AND THE TIME SETTING DURING LOSS OF POWER FOR A PERIOD OF AT LEAST 10 HOURS.
 - THE OCCUPANCY SENSOR SWITCHES SHALL AUTOMATICALLY TURN LIGHTING ON INSTANTANEOUSLY WHEN THE ROOM /SPACE IS OCCUPIED AND AUTOMATICALLY TURN LIGHTING OFF WITHIN 30 MINUTES OF ALL OCCUPANTS LEAVING THAT ROOM/SPACE.
 - THE EMERGENCY AND EXIT LIGHTS THAT CONNECT TO LOCAL AREA NORMAL LIGHTING CIRCUITS WILL BE CONNECTED AHEAD OF ANY LOCAL SWITCHES COMPLY WITH NEC 700.12(H)(2)(3).
 - VERIFY MOUNTING HEIGHT FOR ALL WALL MOUNTED FIXTURE TYPES WITH OWNER/ARCH. PRIOR INSTALLATION. FIXTURE SHALL BE MOUNTED PER ADA REQUIREMENTS.
 - EMERGENCY LIGHTING FACILITIES SHALL BE ARRANGE TO PROVIDE INITIAL ILLUMINATION THAT IS AT LEAST AN AVERAGE OF 1 FOOT-CANDLE (11 LUX) AT THE FLOOR LEVEL AND A MINIMUM OF 0.1 FOOT-CANDLE (1.1 LUX) AT ANY POINT. ELECTRICAL CONTRACTOR SHALL PROVIDE PHOTOMETRIC CALCULATIONS FOR APPROVAL PRIOR TO ORDERING FIXTURES.
 - LOW-LEVEL EXIT SIGNS SHALL BE PROVIDE IN ALL AREAS SERVING GUESTROOMS IN GROUP R-1 OCCUPANCIES BY SECTION 1013.1 AND SHALL COMPLY WITH SECTION 1013.5. THE BOTTOM OF THE SIGN SHALL BE NOT LESS THAN 10 INCHES (254MM) NOR MORE THAN 12 INCHES (305MM) ABOVE THE FLOOR LEVEL. THE SIGN SHALL BE FLUSH MOUNTED TO THE DOOR OR WALL. WHERE MOUNTED ON WALL, THE EDGE OF THE SIGN SHALL BE WITHIN 4 INCHES (102MM) OF THE DOOR FRAME ON THE LATCH SIDE.
 - SEE TYPICAL GUESTROOM PLAN FOR DETAILED ROOM LAYOUT ON SHEET E4.0, E4.1.
 - CONTRACTOR SHALL VERIFY AND FURNISH EXIT SIGNS TO COMPLY WITH SECTION 1013 IBC REQUIREMENT.
 - THE CONTRACTOR SHALL VERIFY WITH THE OWNER FOR THE APPROVED BRANDS/ MODELS OF THE LIGHTING CONTROL AND PROVIDE ALL NECESSARY ACCESSORIES TO COMPLETE THE WIRING, POWER SUPPLY FOR THE DEVICES AS PER THE MANUFACTURER SPECIFICATIONS/ INSTALLATION GUIDELINES.
 - THE ELECTRICAL CONTRACTOR SHALL COORDINATE WITH THE SPRINKLER CONTRACTOR FOR THE PLACEMENTS OF THE LIGHT FIXTURES AND SPRINKLER HEADS TO COMPLY WITH THE NFPA 13 REQUIREMENTS.
 - SUFFICIENT EMERGENCY LIGHTING LEVELS WILL BE DETERMINED DURING THE ONSITE INSPECTION. ADDITIONAL EMERGENCY LIGHTING MAY BE REQUIRED BY FIELD INSPECTOR IF DEEMED INSUFFICIENT.

05/14/24
NOTE:
NEW BACKGROUND

MEP GREEN DESIGN & BUILD PLLC RETAINS COPYRIGHT TO THIS DOCUMENT. THE IDEA DESIGN AND DETAILS, AS A PROFESSIONAL AND INTELLECTUAL INSTRUMENT OF SERVICE, AND IS NOT TO BE USED/COPIED IN WHOLE OR IN PART, FOR ANY OTHER PROJECT WITHOUT THE EXPRESSED WRITTEN CONSENT OF MEP GREEN DESIGN & BUILD PLLC.

This document (whether in print copy or electronic file format) is the property of Design 2 Function, LLC and is part of our intellectual property. It is to be used only for the project and location specified herein. It is not to be reproduced, copied, or modified in any way without the written consent of Design 2 Function, LLC. Any other use, reuse or modification of the print or electronic file without our prior written consent is expressly prohibited and if done so, will be at the recipient's sole risk and without liability or legal exposure to Design 2 Function, LLC.

DRAWING ISSUE DATES:
8/16/23 Permit Set

REVISION DATES:
10/19/23 Staff/GM Toilets, Permit Revisions
11/28/23 ML Worker Revisions
02/15/24 Pool Removal, Guest Room Addition
03/05/24 Updated plans
05/14/24 Updated plans

PROJECT MANAGER:
DV
DRAWN BY:
FL
SHEET TITLE:
LIGHTING
FIRST FLOOR PLAN

E2.0

SHEET: 119 OF 142

ASI #2



1. THE PLUMBING CONTRACTOR MUST PREPARE SHOP DRAWING TO COORDINATE WITH STRUCTURAL ENGINEER BEFORE INSTALLING AND GUARANTEE THE WATER, SEWER AND STORM LINE DO NOT RUNNING ALONG WITH THE GRADE BEAMS.
2. THE CONTRACTOR MUST PERFORM THE COLD/HOT WATER BALANCING TO ENSURE SUFFICIENT HOT WATER THAT DELIVERS TO EVERY GUESTROOM UNIT BEFORE CEILING TILE IS INSTALLED

1 DOMESTIC WATER
FIRST FLOOR PLAN
SCALE: 1/8"=1'-0"

- NOTE:
 - SHUT OFF VALVE ABOVE CEILING. PROVIDE ACCESS PANEL WHERE LOCATED IN AN INACCESSIBLE CEILING PANEL. SHALL BE 18"X18" J.R.T. PAINTED TO MATCH CEILING.
 - INSTALL A THERMOSTATIC MIXING VALVE AT LAVATORY, HANDSINK, SET UP THE HOT WATER TEMPERATURE DELIVERED FOR PUBLIC LAVATORIES NOT TO EXCEED 110°F.
 - INSTALL A THERMOSTATIC MIXING VALVE FOR RESTROOM LAVATORY. SHINK ZINC: 105 GAL/MIN. LUSTED 1070, 10 GAL/MIN @ 45 PSI PRESSURE LOSS, 0.5 GAL/MIN MINIMUM.
 - INSTALL A THERMOSTATIC MIXING VALVE AT EYEWASH. SET UP THE HOT WATER TEMPERATURE DELIVERED FOR EYEWASH TO BE BETWEEN 65 AND 90 DEGREES.
 - CIRCULATING PUMP ABOVE CORRIDOR CEILING. PROVIDE AN ACOUSTIC BOX FOR ANY CIRCULATING PUMP WHERE LOCATED IN THE CORRIDOR CEILING. PROVIDE ACOUSTIC LINING THE CEILING ON LOCATIONS OF ALL CIRCULATING PUMPS.
 - EVERY REGRINDER INSTALLED INSIDE BUILDING WILL BE VENTED OUTSIDE WITH PROPER SIZED PIPE.
 - A BOOSTER HEATER SHOULD BE BUILT IN THE FOOD PREP. DISHWASHING (COMMERCIAL) TO RAISE TEMPERATURE OF WATER TO A MINIMUM OF 180°F.
 - WHERE STATIC WATER PRESSURE IN THE WATER SUPPLY PIPING IS EXCEEDING 80 PSI (552 KPA), AN APPROVED-TYPE STATIC PRESSURE REGULATOR PRECEDED BY AN APPROVED-TYPE CHECK VALVE SHALL BE INSTALLED AND THE STATIC PRESSURE REDUCED TO 80 PSI (552 KPA) OR LESS.

① 1¼" CW, 1¼" HW RISER (TYP.1)

② 1¼" CW, 1" HW RISER (TYP.2)

MEP GREEN DESIGN & BUILD PLLC RETAINS COPYRIGHT TO THIS DOCUMENT, THE IDEA, DESIGN AND DETAILS, AS A PROFESSIONAL AND INTELLECTUAL INSTRUMENT OF SERVICE, AND IS NOT TO BE USED/COPIED IN WHOLE OR IN PART, FOR ANY OTHER PROJECT WITHOUT THE EXPRESSED WRITTEN CONSENT OF MEP GREEN DESIGN & BUILD PLLC.