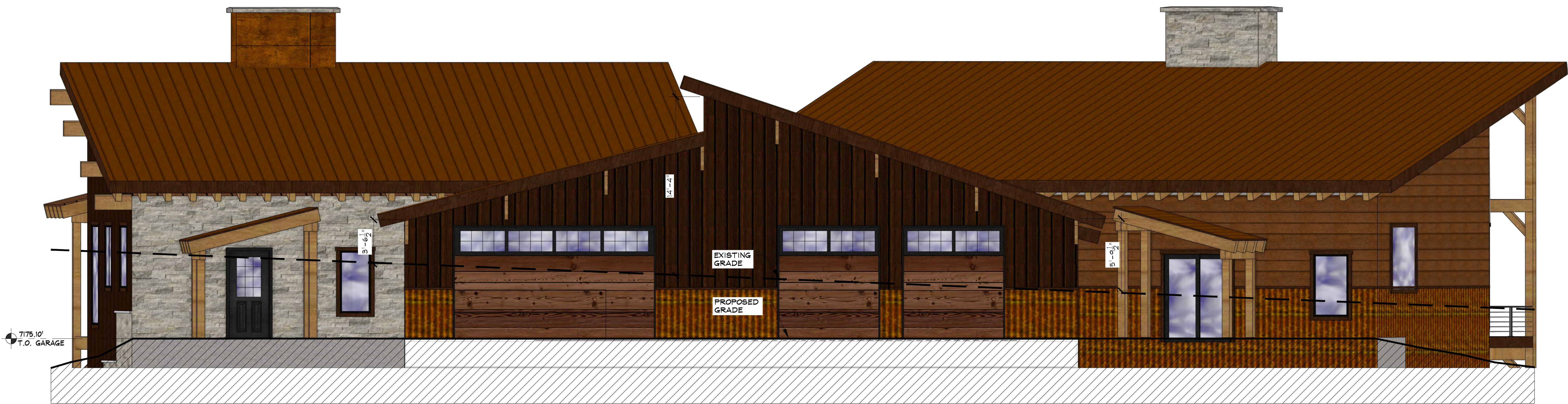


NOT FOR  
CONSTRUCTION



AVERAGE PLATE HEIGHT

$14'-4" + 5'-9\frac{1}{2}" = 20'-0\frac{1}{2}" / 2 = 10'-0\frac{1}{4}"$



1 EAST ELEVATION

SCALE: 1/4" = 1'-0"

STEAMBOAT DUPLEX

150 STEAMBOAT BOULEVARD  
STEAMBOAT SPRINGS, COLORADO  
A NEW DUPLEX FOR:  
DAN MCENTEE

ISSUE DATES

07 . 23 . 24	MINOR ADJUSTMENT
08 . 26 . 24	MINOR ADJUSTMENT
△	REVISION

DRAWN BY: JEM  
REVIEWED BY: CWM  
PROJECT # 24042

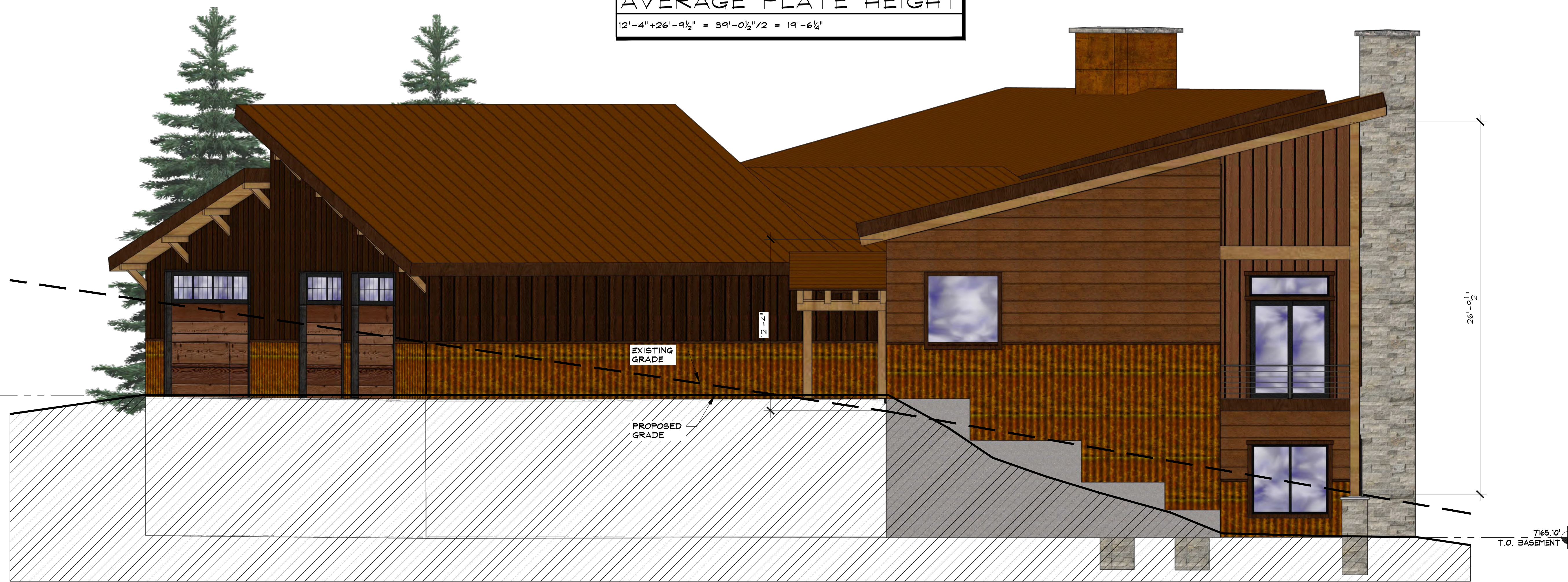
EAST ELEVATION

A-1

**AVERAGE PLATE HEIGHT**

$12'-4" + 26'-9\frac{1}{2}" = 39'-0\frac{1}{2}" / 2 = 19'-6\frac{1}{4}"$

7175.10'  
T.O. GARAGE



7165.10'  
T.O. BASEMENT

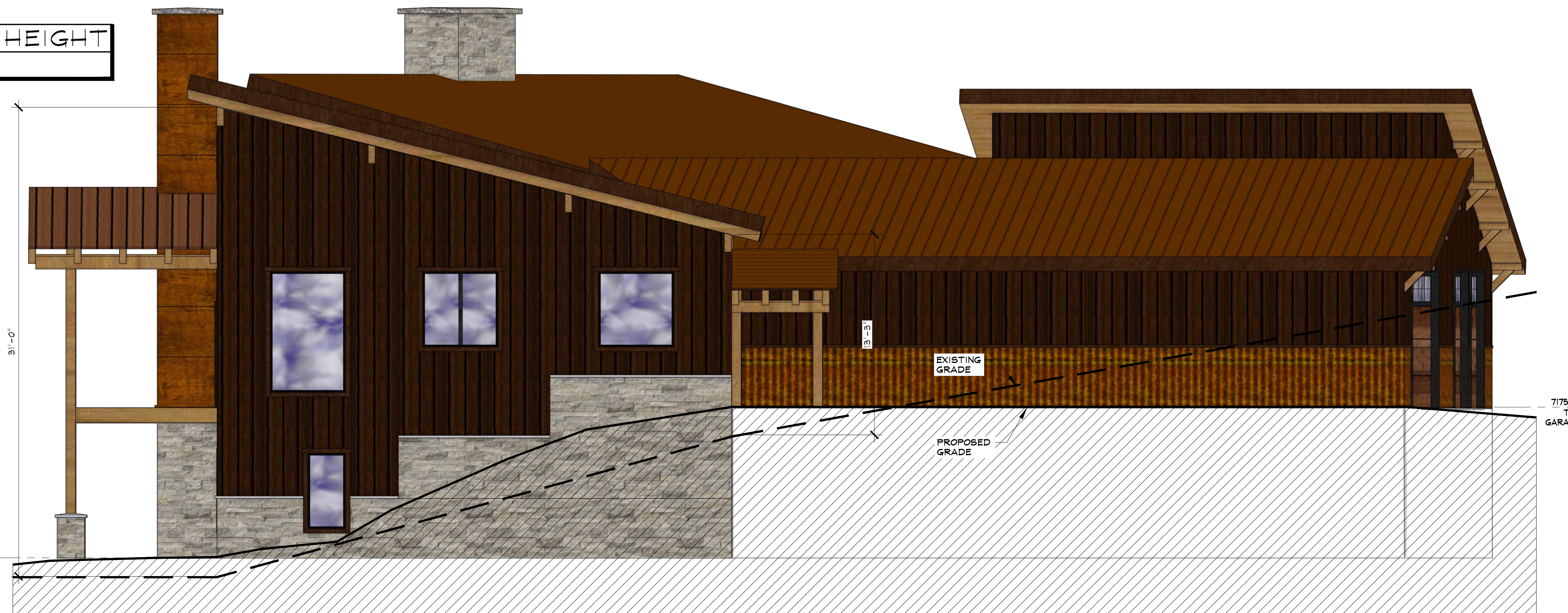
SCALE: 1/4" = 1'-0"

1 NORTH ELEVATION

**AVERAGE PLATE HEIGHT**

$31'-0" + 13'-3" = 44'-3" / 2 = 22'-1\frac{1}{2}"$

7165.10'  
T.O. BASEMENT



7175.10'  
T.O. GARAGE

SCALE: 1/4" = 1'-0"

2 SOUTH ELEVATION

NOT FOR  
CONSTRUCTION



**STEAMBOAT DUPLEX**

150 STEAMBOAT BOULEVARD

STEAMBOAT SPRINGS, COLORADO

A NEW DUPLEX FOR:

DAN MCENTEE

**ISSUE DATES**

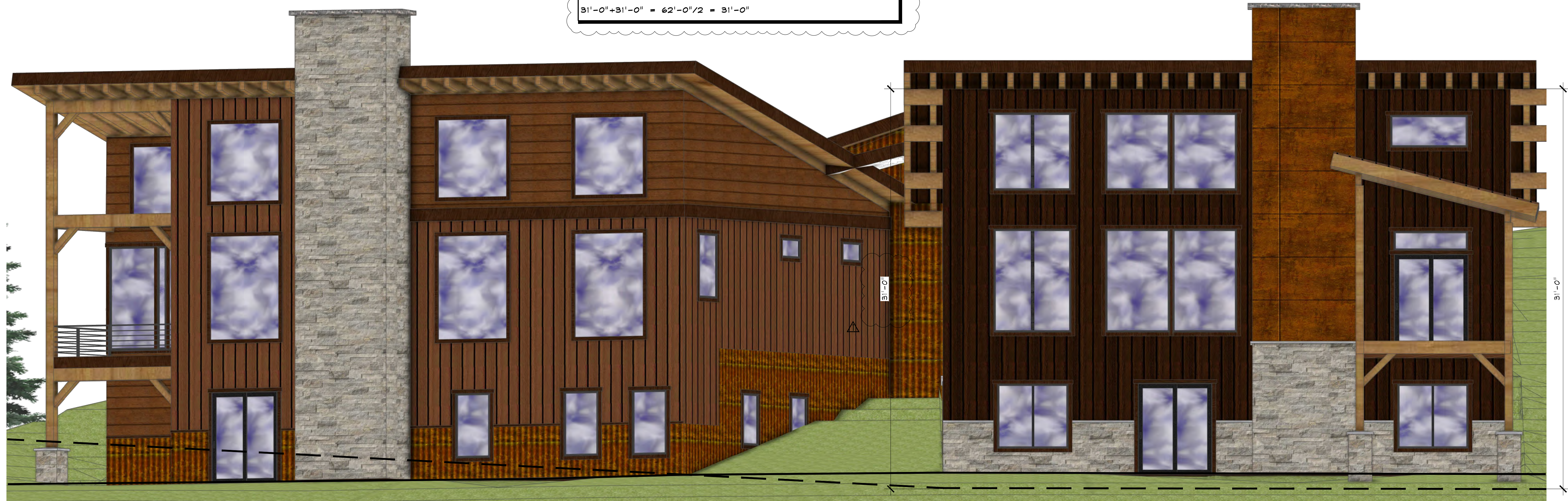
07 . 23 . 24	MINOR ADJUSTMENT
08 . 28 . 24	MINOR ADJUSTMENT REVISION

DRAWN BY: JEM  
REVIEWED BY: CWM  
PROJECT # 24042

NORTH & SOUTH  
ELEVATIONS

**A-2**

△ AVERAGE PLATE HEIGHT  
 $31'-0" + 31'-0" = 62'-0" / 2 = 31'-0"$



NOT FOR CONSTRUCTION

**SEAD**  
 STEAMBOAT ENGINEERING AND DESIGN, INC.  
 2740 Acre Lane Suite 'E' Steamboat Springs, CO 80487  
 Phone: 970. 871. 9101  
 E-mail: Jake@seadinc.com

**STEAMBOAT DUPLEX**  
 150 STEAMBOAT BOULEVARD  
 STEAMBOAT SPRINGS, COLORADO  
 A NEW DUPLEX FOR:  
 DAN MCENTEE

ISSUE DATES

07 . 23 . 24	MINOR ADJUSTMENT
08 . 26 . 24	MINOR ADJUSTMENT
△	REVISION

DRAWN BY: JEM  
 REVIEWED BY: CWM  
 PROJECT # 24042

WEST ELEVATIONS

**A-3**

1 WEST ELEVATIONS

SCALE: 1/4" = 1'-0"

Z:\2024\24042\_Steamboat Duplex\Drawings\24042\_Elevations.dwg, 8/26/2024 11:19:39 AM