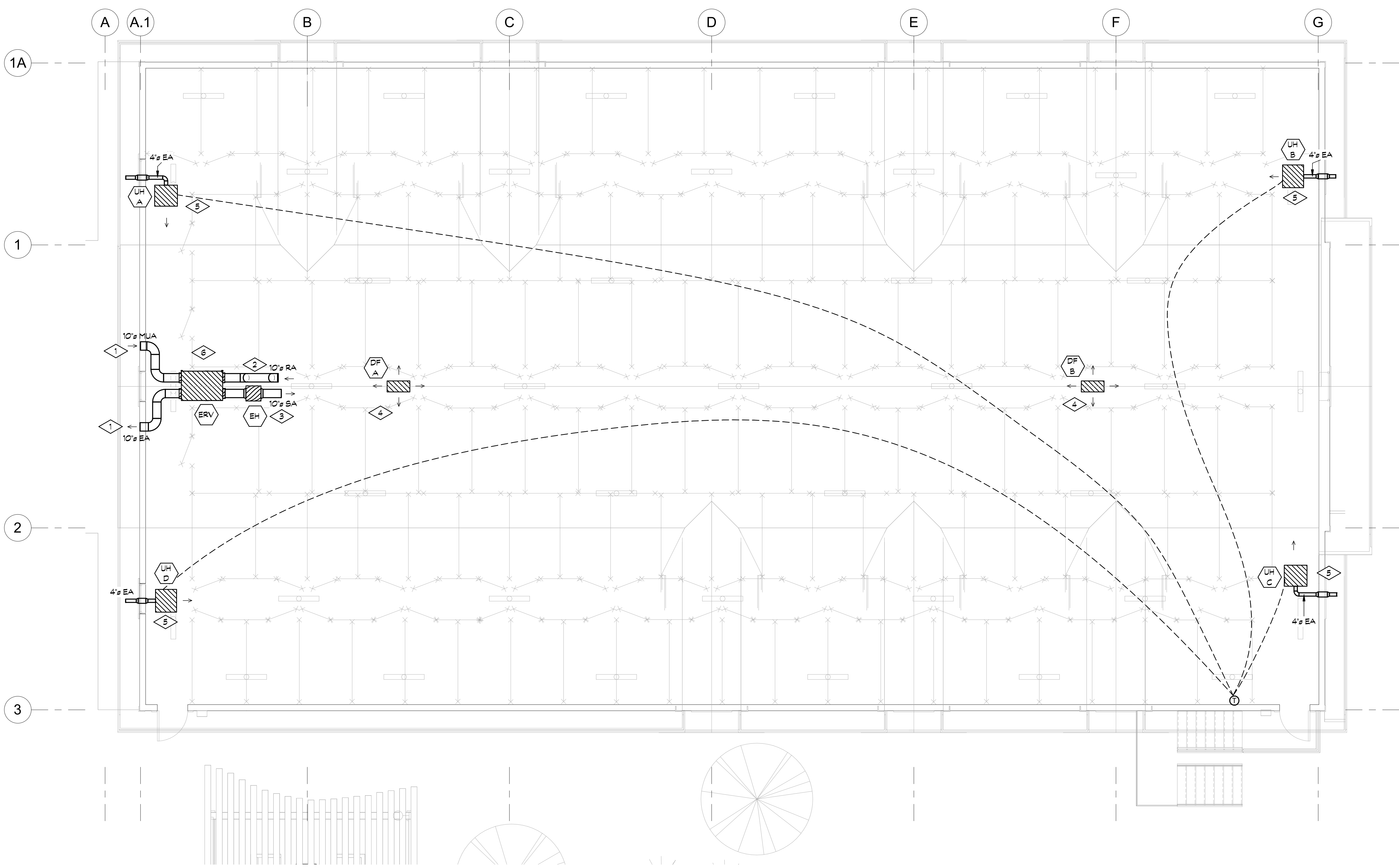


7/23/2024 8:52:30 AM FILE:

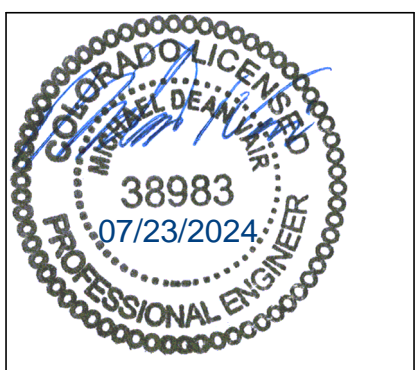


GENERAL NOTES

- A. MECHANICAL SYSTEM IS LESS THAN 480,000 BTU/H COOLING AND 600,000 BTU/H HEATING AND IS THEREFORE NOT REQUIRED TO BE COMMISSIONED PER IECC C408.2.
- B. SNOWMELT DESIGN TO BE DONE BY OWNER.

DETAIL NOTES THIS SHEET

1. FIELD VERIFY AND COORDINATE WITH GC WALL PENETRATION LOCATION OF AIR DUCTS, PROVIDE HOODED AND SCREENED VENTS AT WALL MOUNT. MAINTAIN 10" CLEARANCE EXHAUST AIR VENT TO ANY BUILDING OPENING AND AIR INTAKE VENT.
2. LOCATE RA DUCT INTAKE APP. 3 FEET HIGHER RELATIVE TO ERV SA DUCT. COORDINATE WITH ROOF JOIST STRUCTURE.
3. ELECTRIC DUCT HEATER INSTALLED WITH NO LESS THAN 2 FT STRAIGHT DUCT TO ITS INTAKE CONNECTION. COORDINATE WITH ROOF JOIST STRUCTURE. RE: HVAC EQUIPMENT SCHEDULE FOR ADDITIONAL INFORMATION.
4. PROVIDE DESTRATIFICATION FAN IN APPROXIMATE LOCATION HIGH IN THE GABLE ROOF. CONTINUOUSLY OPERATED, WITH CONTROLS TO BE VIA EC MOTOR POTENTIOMETER ATTACHED TO FAN REMOTE WALL MOUNT. MAINTAIN CLEARANCE TO ROOF STRUCTURE PER MANUFACTURER INSTALLATION MANUAL. RE: HVAC EQUIPMENT SCHEDULE FOR ADDITIONAL INFORMATION.
5. GAS UNIT HEATERS AT APPROXIMATE WALL TOP HEIGHT, OVER THE CORRIDOR SPACES. UNITS TO BE ORIENTED / ANGLED TO ESTABLISH CIRCULAR AIR MOVEMENT IN THE BUILDING. MOUNT LOCATIONS TO BE FIELD DETERMINED WITH REGARDS TO ROOF JOIST STRUCTURE AND MANUFACTURER CLEARANCE REQUIREMENTS. VENTING WITH HORIZONTAL CAT 3 VENT KIT PER MANUFACTURER INSTRUCTIONS. RE: HVAC EQUIPMENT SCHEDULE FOR ADDITIONAL INFORMATION.
6. ERV IN THE GABLE ROOF JOIST STRUCTURE AT RELATIVE HEIGHT OF 2.5 FEET ABOVE GAS UNIT HEATERS. EXACT LOCATION/ORIENTATION COORDINATED WITH JOIST STRUCTURE. CONTROLLED VIA MOTION DETECTORS LOCATED AT ENTRY DOOR LOCATIONS.



NOTICE: DUTY OF COOPERATION
 Release of these plans contemplates further cooperation among the owner, its contractor and the architect. Design and construction are complex. Although the architect and his consultants have performed their services with due care and diligence, they cannot guarantee perfection. Communication is imperfect and every contingency cannot be anticipated. Any ambiguity or discrepancy discovered by the use of these plans shall be reported immediately to the architect. Failure to notify the architect compounds misunderstanding and increases construction costs. A failure to cooperate by a simple notice to the architect shall relieve the architect from responsibility for the consequences. Changes made from the plans without consent of the architect are unauthorized and shall relieve the architect of responsibility for all consequences arising out of such changes.

All design, documents and data prepared by Eric Smith Associates, P.C. as instruments of service, shall remain property of Eric Smith Associates, P.C. and shall not be copied, changed or disclosed in any form whatsoever without first obtaining the express written consent of Eric Smith Associates, P.C.
 Eric Smith Associates, P.C.

REVISIONS

No.	Description	Date

PARKING GARAGE SOUTH
 THE LODGE AT STEAMBOAT
 2700 VILLAGE DR.
 STEAMBOAT SPRINGS, CO

REVIEWED FOR CODE COMPLIANCE
 08/06/2024

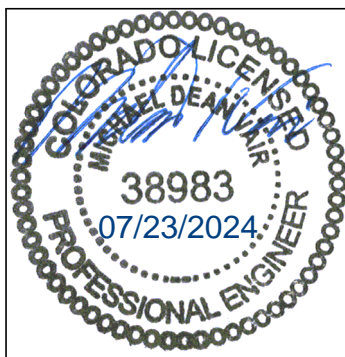


Job Number: 25015
 Date: 08.27.2024
 Drawn By: VZ
 Checked By: MV

Project Phase
 PERMIT SET

Sheet Title
 SECOND FLOOR HVAC PLAN

Sheet Number
M2.1

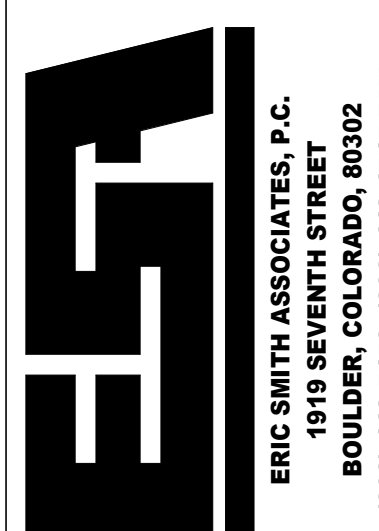


NOTICE: DUTY OF COOPERATION
 Release of these plans contemplates further cooperation among the owner, its contractor and the architect. Design and construction are complex. Although the architect and his consultants have performed their services with due care and diligence, they cannot guarantee perfection. Communication is imperfect and every contingency cannot be anticipated. Any ambiguity or discrepancy discovered by the use of these plans shall be reported immediately to the architect. Failure to notify the architect compounds misunderstanding and increases construction costs. A failure to cooperate by a simple notice to the architect shall relieve the architect from responsibility for the consequences. Changes made from the plans without consent of the architect are unauthorized and shall relieve the architect of responsibility for all consequences arising out of such changes.

All design, documents and data prepared by Eric Smith Associates, P.C. as instruments of service, shall remain property of Eric Smith Associates, P.C. and shall not be copied, changed or disclosed in any form whatsoever without first obtaining the express written consent of Eric Smith Associates, P.C.
 Eric Smith Associates, P.C.

REVISIONS		
No.	Description	Date

PARKING GARAGE SOUTH
 THE LODGE AT STEAMBOAT
 2700 VILLAGE DR.
 STEAMBOAT SPRINGS, CO



Job Number: 25019
 Date: 08.27.2024
 Drawn By: CY
 Checked By: MV

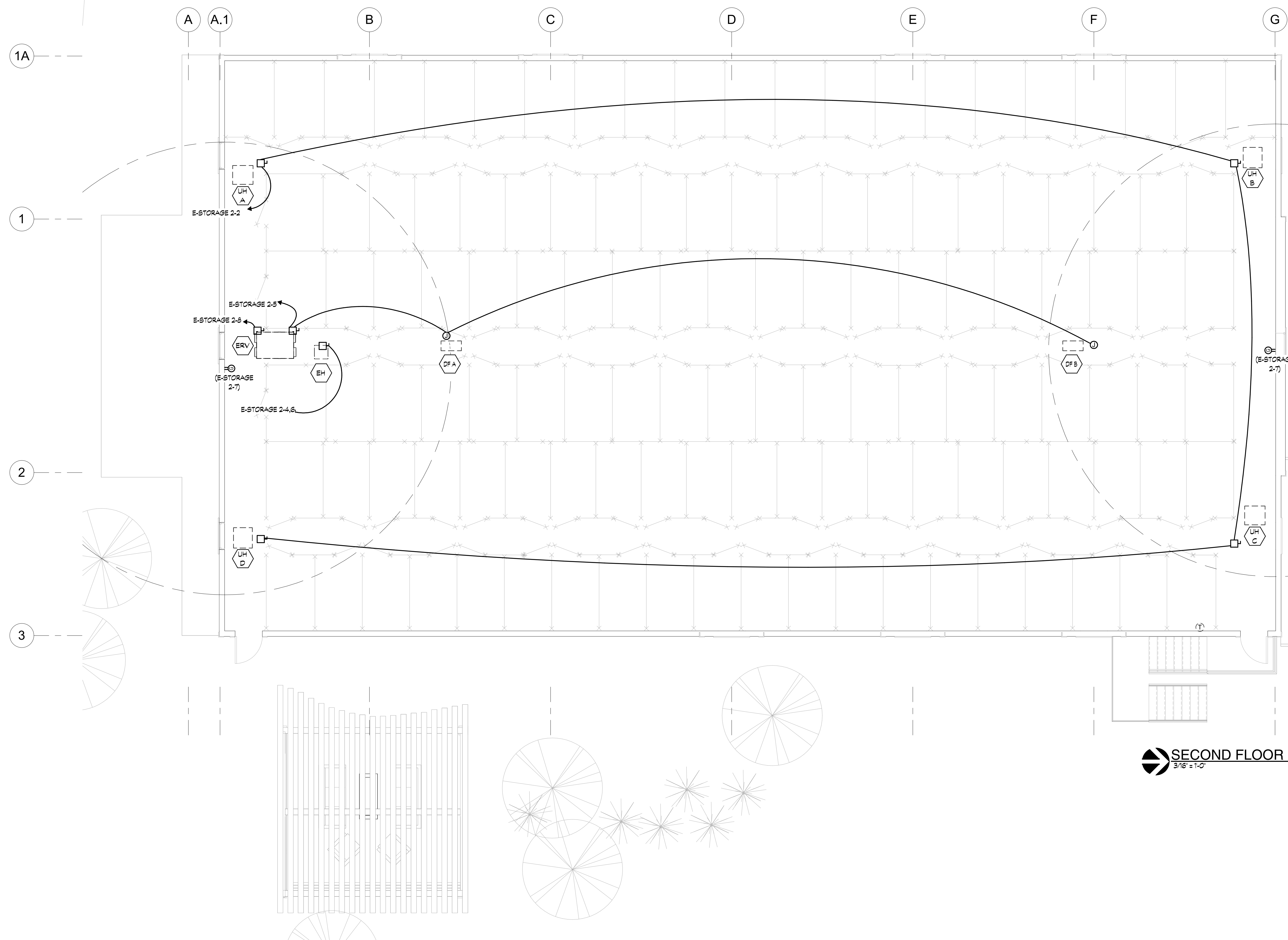
Project Phase
 PERMIT SET

Sheet Title
 SECOND FLOOR POWER PLAN

Sheet Number
E2.1

SECOND FLOOR POWER PLAN
 3/16" = 1'-0"

REVIEWED FOR CODE COMPLIANCE
 08/06/2024



LEGEND

- MAIN DISTRIBUTION CENTER
- PANELBOARD
- ELECTRIC SERVICE METER
- CURRENT TRANSFORMER
- TRANSFORMER
- CONCEALED CIRCUIT
- UNDER FLOOR / UNDERGROUND CIRCUIT
- EXPOSED CIRCUIT
- WIREMOLD (SURFACE WIREWAY)
- PLUGMOLD
- HOMERUN TO PANELBOARD (ONE ARROW / CKT. PNL & CMT #S SHOWN)
- CIRCUIT NUMBER(S) FOR SPECIFIED PANEL
- CONDUIT TURNS UP
- CONDUIT TURNS DOWN
- JUNCTION BOX / CARD READER
- PORCELAIN LAMP HOLDER (PC, FULL CHAIN)
- LIGHT FIXTURE: SURFACE MOUNTED
- RECESSED LIGHT FIXTURE
- WALL MOUNTED LIGHT FIXTURE
- EXT LIGHT: DIRECTIONAL ARROW
- BATTERY PACK
- SURFACE FLUORESCENT FIXTURE
- RECESSED FLUORESCENT FIXTURE
- SINGLE OUTLET, C-CLOCK (-70°)
- DUPLEX RECEPTACLE (IG: ISOLATED GROUND)
- CEILING DUPLEX RECEPTACLE
- DUPLEX RECEPTACLE - GFCI
- DUPLEX RECEPTACLE - GFCI BREAKER
- DUPLEX RECEPTACLE - TAMPER RESIST
- SPLIT WIRE DUPLEX
- QUADRAPLEX (DOUBLE DUPLEX)
- COMB. SWITCH / RECEPTACLE
- FLOOR MOUNTED RECEPTACLE
- SPECIAL PURPOSE (AS NOTED)
- TELEVISION OUTLET
- MOTOR OUTLET
- etc - switched thermal overload
- TELEPHONE TERMINAL
- TELEPHONE OUTLET
- FLOOR MTD. TELEPHONE OUTLET
- COMPUTER OUTLET
- COMB. TEL./COMPUTER OUTLET
- TOGGLE SWITCH
- a-switching p-pilot light
- 2-2 pole k-keyed
- 3-3 way no-thermal overload
- 4-4 way timer
- WALL MOUNTED LIGHTING CONTROL DEVICE
- RE: LIGHTING CONTROL DEVICE SCHEDULE
- CEILING MOUNTED LIGHTING CONTROL DEVICE
- RE: LIGHTING CONTROL DEVICE SCHEDULE
- THERMOSTAT
- TIME SWITCH
- PHOTOCELL
- PUSH-BUTTON STATION
- SAFETY SWITCH
- MOTOR STARTER / LIGHTING CONTACTOR
- COMBINATION MOTOR STARTER
- RELAY
- FIRE ALARM CONTROL PANEL
- ANNUNCIATOR
- PULL STATION
- HORN
- HORN / LIGHT COMBINATION
- HORN / STROBE
- STROBE
- BELL
- OS & Y VALVE
- FLOW SWITCH
- ROOM DETECTOR (SMOKE)
- ROOM DETECTOR (THERMAL)
- DUCT DETECTOR
- REMOTE INDICATING LIGHT / TEST SWITCH
- DOOR HOLDER
- CHIME
- FUSED SWITCH
- CIRCUIT BREAKER
- GROUND CONNECTOR
- MECHANICAL EQUIPMENT
- DETAIL NOTE
- KITCHEN / MEDICAL EQUIPMENT
- (E) EXISTING TO REMAIN
- (ER) EXISTING TO BE RELOCATED
- (ED) EXISTING TO BE DEMOLISHED

COMcheck Software Version COMcheckWeb

Interior Lighting Compliance Certificate

Project Information
 Energy Code: 2021 IECC
 Project Title: 23015 - The Lodge
 Project Type: Alteration

Construction Site: 2700 Village Dr, Steamboat Springs, Colorado
 Owner/Agent: Designer/Contractor:

Allowed Interior Lighting Power

Area Category	B Floor Area (ft ²)	C Allowed Watts / ft ²	D Allowed Watts
1-TRASH ROOM (Common Space Types: Storage >=50 - <=1000 sq.ft.)	162	0.38	62
2-Common Space Types: Storage >=1000 sq.ft.	7309	0.38	2777
Total Allowed Watts =			2839

Proposed Interior Lighting Power

Fixture ID : Description / Lamp / Wattage Per Lamp / Ballast	A Lamps / Fixture	C # of Fixture (C X D)	D Fixture Watt.	E
TRASH ROOM (Common Space Types: Storage >=50 - <=1000 sq.ft., 162 sq.ft.)	1	1	11	11
LED: W1: Other:				
Common Space Types: Storage >=1000 sq.ft. (7309 sq.ft.)	1	41	35	1447
LED: S1: Other:				
Total Proposed Watts =			1458	

Interior Lighting PASSES

Interior Lighting Compliance Statement
 Compliance Statement: The proposed interior lighting alteration project represented in this document is consistent with the building plans, specifications and other calculations submitted with this permit application. The proposed interior lighting systems have been designed to meet the 2021 IECC requirements in COMcheck Version COMcheckWeb and to comply with any applicable mandatory requirements listed in the Inspection Checklist.

Michael Vair
 Name - Title: Signature: 03/26/2024 Date:

COMcheck Software Version COMcheckWeb

Exterior Lighting Compliance Certificate

Project Information
 Energy Code: 2021 IECC
 Project Title: 23015 - The Lodge
 Project Type: Alteration
 Exterior Lighting Zone: 2 (Residentially zoned area (L22))

Construction Site: 2700 Village Dr, Steamboat Springs, Colorado
 Owner/Agent: Designer/Contractor:

Allowed Exterior Lighting Power

Area/Surface Category	B Quantity	C Allowed Watts /	D Tradable Allowed Watts (B X C)	E
Parking area	7560 ft ²	0.04	Yes	302
PERGOLA (Special feature area)	433 ft ²	0.1	Yes	43
Stairway	360 ft ²	0.7	Yes	252
Total Tradable Watts (a) =			598	
Total Allowed Watts (b) =			400	

(a) Wattage tradeoffs are only allowed between tradable areas/surfaces.
 (b) A supplemental allowance equal to 400 watts may be applied toward compliance of both non-tradable and tradable areas/surfaces.

Proposed Exterior Lighting Power

Fixture ID : Description / Lamp / Wattage Per Lamp / Ballast	B Lamps / Fixture	C # of Fixture (C X D)	D Fixture Watt.	E
Parking area (7560 ft ²): Tradable Wattage				
LED: W1: Other:	1	2	11	22
PERGOLA (Special feature area, 433 ft ²): Tradable Wattage				
LED: W1: Other:	1	2	14	28
Stairway (360 ft ²): Tradable Wattage				
LED: W1: Other:	1	2	11	22
Total Tradable Proposed Watts =			72	

Exterior Lighting PASSES

Exterior Lighting Compliance Statement
 Compliance Statement: The proposed exterior lighting alteration project represented in this document is consistent with the building plans, specifications, and other calculations submitted with this permit application. The proposed exterior lighting systems have been designed to meet the 2021 IECC requirements in COMcheck Version COMcheckWeb and to comply with any applicable mandatory requirements listed in the Inspection Checklist.

Michael Vair
 Name - Title: Signature: 03/26/2024 Date:

LUMINAIRE SCHEDULE

KEY	LAMP	DESCRIPTION	CEILING (DEPTH)	MANUFACTURER/#	VOLT
S1	35.3W, 4288 LUM, LED, 40K	4' LED STRIP LIGHT, DAMP LOCATION RATED	SURFACE	LITHONIA LIGHTING/CSB L48 4000LM MVOLT 40K 80CRI	120
W1	11W, 1500 LUM, LED, 30K	11" BY 5" WALL-MOUNTED LED, WET LOCATION RATED	WALL	LITHONIA LIGHTING/ARCI LED P1 30K MVOLT E4WH PE DDBND	120
W2	14W, 300 LUM, LED, 30K, 92 CRI	EXTERIOR WALL SCENCE, WET LOCATION RATED	WALL	HINKLEY/2300KZ-LED-BUCKEYE BRONZE	120

NOTES: NOTIFY ENGINEER OF ANY DISCREPANCIES BETWEEN MODEL NUMBERS AND DESCRIPTIONS PRIOR TO ORDERING
 VERIFY CEILING INSULATION W/ GC AND NOTIFY ENGINEER OF ANY IC RATING CONFLICTS PRIOR TO ORDERING

LIGHTING CONTROL DEVICE SCHEDULE

KEY	MODE	DESCRIPTION	MOUNTING	MANUFACTURER/#	VOLT
2L	SWITCH / DIMMING	WALL SWITCH, ON/OFF, DIMMING (POWERPACK REQUIRED, PPLIS D)	WALL MOUNT	ACUITY #PDM DX XX	LOW
3F	VACANCY	CEILING SENSOR, DUAL TECHNOLOGY, EXTENDED RANGE (24 @ 3' APF), 96° COVERAGE PATTERN, LOW VOLTAGE AUXILIARY RELAY	CEILING	ACUITY HCM PDT 10 AR RJ3	LOW
5	SYSTEM	ASTRONOMICAL TIMECLOCK	WALL MOUNT	ACUITY HDTC	120

NOTES: NOTIFY ENGINEER OF ANY DISCREPANCIES BETWEEN MODEL NUMBERS AND DESCRIPTIONS PRIOR TO ORDERING
 VERIFY DIMMING COMPATIBILITY W/ LIGHT FIXTURES AND NOTIFY ENGINEER OF ANY CONFLICTS PRIOR TO ORDERING

SHORT CIRCUIT CALCULATION

LOCATION	SECONDARY VOLTAGE	Ø	KVA	%Z	Isc AVAIL.	"M"	Isc FAULT
TRANS	240	1	100	1.4	417	71.4	29800

LOCATION	VOLT.	Ø	WIRE TYPE	CONDUIT SIZE	WIRE SIZE	#OF RUNS	LENGTH	"C" VALUE	Isc AVAIL.	"F"	"M"	Isc FAULT	
CT	1	240	1	AL	NON	250	2	100	12862	29800	0.865	0.509	15162
E-STORAGE 2	1	240	1	AL	MET	250	1	120	12122	15162	1.251	0.444	6736
E-STORAGE	1	240	1	AL	MET	1	1	5	4645	6736	0.060	0.943	6353

NOTES: SWITCHBOARDS, PANELBOARDS AND LOAD CENTERS ARE TO BE FULLY RATED AS SHOWN. PROVIDE A DEDUCT PRICE TO USE SERIES RATED EQUIPMENT AND PROVIDE THE TESTED OCPD COMBINATION USED TO OBTAIN THE SERIES RATINGS. ALL EQUIPMENT TO HAVE PERMANENTLY ATTACHED LABELING PROVIDED BY THE EQUIPMENT MANUFACTURER AND INSTALLER PER NEC 110.22 AND 240.26 (E)
 PROVIDE MARKINGS ON ALL SERVICE EQUIPMENT WITH MAXIMUM CALCULATED FAULT CURRENT PER NEC 110.24
 *AVAILABLE FAULT CURRENT AT TRANSFORMER CALCULATED BASED ON 92% FROM UTILITY COMPANY DESIGN STANDARDS. IF TRANSFORMER SIZE IS OTHER THAN SHOWN, NOTIFY ENGINEER.

BUILDING LOAD SUMMARY

VOLTS: 120/240 Single PHASE: 1 WIRES: 3
 NOTE: ALL EXISTING METER CALCULATED AT 125% PER NEC 220.87

CKT	CIRCUIT DESCRIPTION	LOAD	AMPS
1	METER READING - YVEA 50B79 (E)	21.2 kVA	88.3 A
2	E-STORAGE 2	16.6 kVA	69.0 A
3	N/A	--	--
4	N/A	--	--
TOTAL CONNECTED:		37.7 kVA	

LOAD TYPE	CONN. LOAD	DEMAND FACT.	EST. DEMAND
LIGHTING / EV - L	1.53 kVA	125%	1.91 kVA
RECEPTACLE - R	0.36 kVA	100%	0.36 kVA
MOTOR - M	14.66 kVA	113%	16.54 kVA
KITCHEN - K	0 kVA	0%	0 kVA
OTHER - O	0 kVA	0%	0 kVA
EXISTING - E	21.19 kVA	125%	26.49 kVA
NEC-220.84- NC	0 kVA	0%	0 kVA
TOTAL DEMAND:			48.3 kVA/189 A

ELECTRICAL ONE-LINE DIAGRAM

PANEL E-STORAGE (EXISTING)

SUPPLY FROM: E-STORAGE 2
 MOUNTING: RECESSED
 ENCLOSURE: NEMA 1

VOLTS: 120/240 Single
 PHASES: 1
 WIRES: 3

A.I.C. RATING: 10,000
 MAINS TYPE: MLC
 MAINS RATINGS: 100 A

CIRCUIT DESCRIPTION	LT	TRIP	P	BT	A	B	BT	P	TRIP	LT	CIRCUIT DESCRIPTION
THIS HEATER	--	30	2	1	0	0	2	2	30	--	STOR. HEATER
BELL HEATER	--	30	2	5	0	0	6	2	30	--	MAIN HEATER
OUTSIDE 3, 4	--	20	2	9	0	0	10	1	15	--	HK N. OUTLETS
OUTSIDE 1, 2	--	20	2	13	0	0	14	1	20	--	MAINT N. OUT
SHOP SAW OUTLETS	--	20	1	17	0	0	18	1	20	--	LIGHTS + OUTLETS
SHOP SAW OUTLETS	--	20	1	19	0	0	20	1	20	--	MAINTS. OUTLET
MAIN	--	125	2	21	0	--	22	1	--	--	GARAGE LITES
				23	0	--	24	1	--	--	SPARE
					0	--	0	--			SPACE

TOTAL LOAD: 0 kVA 0 kVA
 TOTAL AMPS: 0 A 0 A

LOAD TYPE	CONN. LOAD	DEMAND FACT.	EST. DEMAND	BREAKER TYPE	PANEL TOTALS
LIGHTING / EV - L	0 kVA	0%	0 kVA	SHUNT TRIP - ST	TOTAL CONN. LOAD: 0 kVA
RECEPTACLE - R	0 kVA	0%	0 kVA	GFCI - G	
MOTOR - M	0 kVA	0%	0 kVA	HANDLE BLOCK - H	TOTAL EST. DEMAND: 0 kVA
KITCHEN - K	0 kVA	0%	0 kVA	HANDLE TIE - T	TOTAL CONN.: 0 A
OTHER - O	0 kVA	0%	0 kVA	AFCI - A	TOTAL EST. DEMAND: 0 A
EXISTING - E	0 kVA	0%	0 kVA	STANDARD - S	
NEC-220.84-				LOCKOUT - L	

PANEL E-STORAGE 2

SUPPLY FROM: BUILDING
 MOUNTING: RECESSED
 ENCLOSURE: NEMA 1

VOLTS: 120/240 Single
 PHASES: 1
 WIRES: 3

A.I.C. RATING: 10,000
 MAINS TYPE: MLC
 MAINS RATINGS: 200 A

CIRCUIT DESCRIPTION	LT	TRIP	P	BT	A	B	BT	P	TRIP	LT	CIRCUIT DESCRIPTION	
OUTDOOR LTG	L	20	1	S	1	83	152	2	S	1	20	UH UNITS
STORAGE LTG	L	20	1	S	3			4	S	2	40	M
ERV FAN, DF	M	20	1	S	5	1008	3750	6	S	2	40	M
MECHANICAL RECEP	R	20	1	S	7			8	S	1	60	M
SPACE	--	--	--	--	--	--	--	10	1	--	--	SPACE
SPACE	--	--	--	--	--	--	--	12	1	--	--	SPACE
SPACE	--	--	--	--	--	--	--	14	1	--	--	SPACE
SPACE	--	--	--	--	--	--	--	16	1	--	--	SPACE
SPACE	--	--	--	--	--	--	--	18	1	--	--	SPACE
SPACE	--	--	--	--	--	--	--	20	1	--	--	SPACE
E-STORAGE	Spore	100	2	S	21	0	0	22	2	40	--	FOR FUTURE SOLAR ELECTRIC

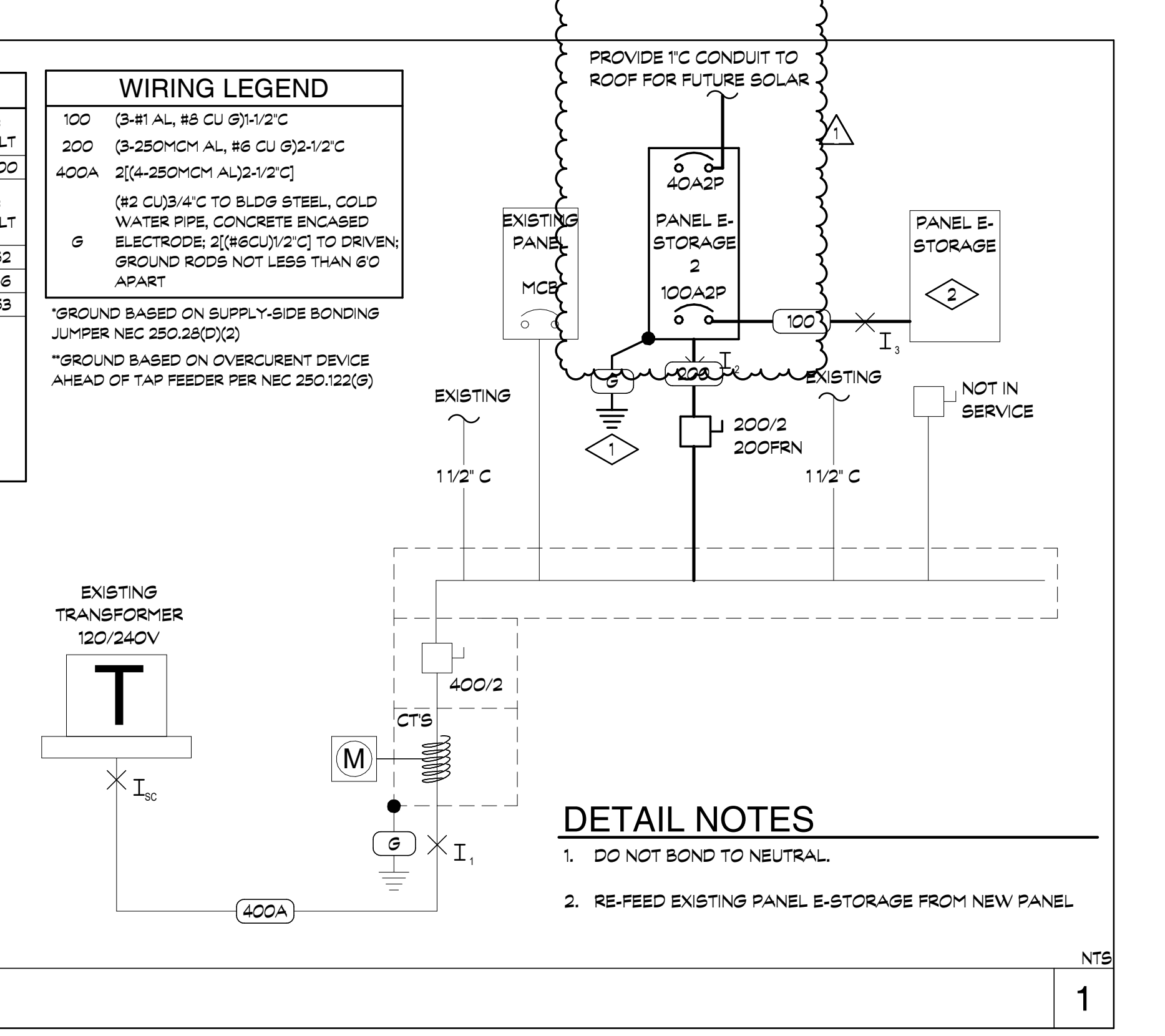
TOTAL LOAD: 5.39 kVA 10.56 kVA
 TOTAL AMPS: 50 A 88 A

LOAD TYPE	CONN. LOAD	DEMAND FACT.	EST. DEMAND	BREAKER TYPE	PANEL TOTALS
LIGHTING / EV - L	1.53 kVA	125%	1.91 kVA	SHUNT TRIP - ST	TOTAL CONN. LOAD: 16.55 kVA
RECEPTACLE - R	0.36 kVA	100%	0.36 kVA	GFCI - G	
MOTOR - M	14.66 kVA	113%	16.54 kVA	HANDLE BLOCK - H	TOTAL EST. DEMAND: 16.81 kVA
KITCHEN - K	0 kVA	0%	0 kVA	HANDLE TIE - T	TOTAL CONN.: 69 A
OTHER - O	0 kVA	0%	0 kVA	AFCI - A	TOTAL EST. DEMAND: 78 A
EXISTING - E	0 kVA	0%	0 kVA	STANDARD - S	
NEC-220.84-				LOCKOUT - L	

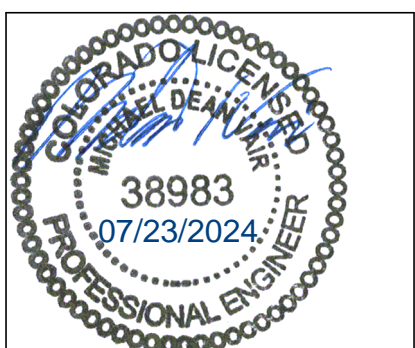
MECHANICAL EQUIPMENT

KEY	DESCRIPTION	LOAD	VOLT	CIRCUIT	CONNECTION	REMARKS
UH A, B, C, D	UNIT HEATER	2.4 A	120/1	(2-#12, #12G) 1/2" C	30/2; 4 FRN	
DF A, B	DESTRATIFICATION FAN	0.6 A	120/1	(2-#12, #12G) 1/2" C	30/2; 4 FRN	
ERV	ENERGY RECOVERY VENTILATOR FAN	7.2 A	120/1	(2-#12, #12G) 1/2" C	30/2; 10 FRN	
ERV	ENERGY RECOVERY VENTILATOR HEATER	5 kW	120/1	(2-#6, #10G) 1" C	60/2; 60 FRN	
BH A, B	DUCT AIR HEATER	7.5 kW	240/1	(2-#8, #10G) 3/4" C	60/2; 40 FRN	

NOTES: TEMPERATURE RATINGS OF ALL DEVICES COULD NOT BE VERIFIED, THEREFORE WIRE IS SIZED BASED ON 60C PER NEC 110.14(C)(1)(a)



REVIEWED FOR CODE COMPLIANCE
 08/06/2024



NOTICE: DUTY OF COOPERATION
 Release of these plans constitutes further cooperation among the owner, his contractor and the architect. Design and construction are complex. Although the architect and his consultants have performed their services with due care and diligence, they cannot guarantee perfection. Communication is important and every contingency cannot be anticipated. Any ambiguity or discrepancy discovered by the user of these plans shall be reported immediately to the architect. Failure to notify the architect constitutes misunderstanding and increases construction costs. A failure to cooperate by a simple notice to the architect shall relieve the architect from responsibility for the consequences. Changes made from the plans without consent of the architect are unauthorized and shall relieve the architect of responsibility for all consequences arising out of such changes.

All design, documents and data prepared by Eric Smith Associates, P.C. as instruments of service shall remain property of Eric Smith Associates, P.C. and shall not be copied, changed or disposed in any form whatsoever without first obtaining the express written consent of Eric Smith Associates, P.C.

Eric Smith Associates, P.C.

REVISIONS

No.	Description	Date
1	BDC	07/29/24

PARKING GARAGE SOUTH
 THE LODGE AT STEAMBOAT
 2700 VILLAGE DR.
 STEAMBOAT SPRINGS, CO



ERIC SMITH ASSOCIATES, P.C.
 1919 SEVENTH STREET
 BOULDER, COLORADO 80302
 (303) 442-5456, (303) 442-4745 FAX

Job Number: 25015
 Date: 03.27.2024
 Drawn By: CY
 Checked By: MV

Project Phase
 PERMIT SET

Sheet Title
 ELECTRICAL DETAILS & SCHEDULES

Sheet Number
E3.1

DIVISION 26/27/28 - ELECTRICAL/TELEPHONE DATA/FIRE ALARM

- PROVIDE ALL EQUIPMENT, AND SERVICES NECESSARY TO INSTALL THE COMPLETE SYSTEMS DESCRIBED BY THE CONTRACT DOCUMENTS AND SPECIFIED BELOW. THE DRAWINGS ILLUSTRATE THE GENERAL DESIGN AND EXTENT OF PERFORMANCE REQUIRED. ALL DIMENSIONS AND LOCATIONS SHALL BE TAKEN FROM THE ARCHITECTURAL DRAWINGS.
- COMPLY WITH STATE AND LOCAL CODES, UTILITY COMPANY REGULATIONS, THE LATEST EDITIONS OF THE 2021 INTERNATIONAL CODES, 2023 NEC AND NFPA CODES.
- EQUIPMENT AND MATERIALS SHALL BE NEW, UNLISTED FOR THE USE INTENDED, BE FREE FROM DAMAGE OR DEFECT, AND SHALL BE INSTALLED PER MANUFACTURERS INSTRUCTIONS. MANUFACTURERS NOT LISTED ARE ENCOURAGED TO SUBMIT FOR ACCEPTANCE AS AN "APPROVED EQUIVALENT". QUALITY OF SPECIFIC EQUIPMENT IS ESTABLISHED BY MANUFACTURERS CATALOG NUMBER. ALTERATIONS CAUSED BY ANY SUBSTITUTION SHALL BE ACCOMPLISHED AT NO ADDITIONAL EXPENSE TO THE OWNER.
- THE CONTRACTOR SHALL BE RESPONSIBLE FOR THE SUCCESSFUL OPERATION OF ELECTRICAL SYSTEMS FOR A PERIOD OF ONE YEAR FROM THE DATE OF FINAL ACCEPTANCE. PROVIDE OPERATING AND MAINTENANCE INSTRUCTIONS FOR OPERATION OF ALL ELECTRICAL SYSTEMS.
- SUPPORT CONDUIT AND EQUIPMENT FROM THE STRUCTURE TO PREVENT SAGGING, POCKETING, SWAYING, AND VIBRATIONS.
- PROVIDE SLEEVES AND INSERTS FOR ALL ELECTRICAL CONDUIT. SEAL ALL PIPING PASSING THROUGH FIRE-RATED CONSTRUCTION WITH APPROVED MATERIAL TO MAINTAIN AIR-TIGHT, FIRE-RATED INTEGRITY.
- PROVIDE COMPLETE SYSTEMS OF CONDUCTORS AND RACEWAYS USING CONDUIT AND/OR CABLE ASSEMBLIES APPROPRIATE TO THE FUNCTION AND LOCATION, AND SPECIFICALLY APPROVED IN CHAPTER THREE OF THE N.E.C. CONDUCTORS MUST BE DERATED PER CODE. LOAD BALANCE THE ENTIRE SYSTEM TO WITHIN 15% PER PHASE. PROVIDE A COMPLETE GROUNDING SYSTEM IN ACCORDANCE WITH SECTION 250 OF THE N.E.C.
 - EMT: ELECTRICAL METALLIC TUBING, GALVANIZED.
 - PVC: POLYVINYL CHLORIDE CONDUIT, SCHEDULE 40
- THE FOLLOWING CABLE ASSEMBLIES MAY BE USED IN THE POWER DISTRIBUTION SYSTEM, WHERE APPROVED BY THE N.E.C.:
 - MC: METAL CLAD CABLE
- PROVIDE GALVANIZED STEEL OUTLET AND JUNCTION BOXES, EXCEPT WHERE OTHERWISE INDICATED. BOXES SHALL BE A MINIMUM 4" SQUARE OR OCTAGONAL, DEPTH AS REQUIRED. PROVIDE WEATHER-PROOF TYPE CAST BOXES WITH GASKET AND CAST COVERPLATE FOR WET LOCATIONS. THROUGH THE WALL BOXES ARE NOT PERMITTED. PROVIDE PLASTER OR TILE RINGS FOR ALL FLUSH OUTLETS INSTALLED WHERE REQUIRED
- POWER CONDUCTORS SHALL BE COPPER, RATED 600 VOLTS (STRANDED FOR NO. 8 AWG AND LARGER), WITH THE FOLLOWING INSULATION STANDARDS: THHN, THWN, XHHW(90C). THE CONDUCTORS SHALL BE APPLIED USING THE 75C RATINGS.
- PROVIDE SPECIFICATION GRADE, DEVICES THROUGHOUT. SWITCHES AND DUPLEX RECEPTACLES MAY BE COMMERCIAL GRADE. DEVICES SHALL BE MANUFACTURED BY HUBBELL. PLATES SHALL MATCH THE DEVICES, WITH MATCHING SCREWS OR AS NOTED BELOW. BACK OF HOUSE, AND IN AREAS WITH ADJACENT STAINLESS STEEL EQUIPMENT, THEY SHALL BE BRUSHED ALUMINUM COVERPLATES. DEVICES SHALL BE IVORY UNLESS OTHERWISE INDICATED. WHERE EXPOSED TO PUBLIC VIEW ON DARK WALLS, THEY SHALL BE BLACK. FIELD VERIFY ANY AREAS OF DOUBT WITH THE ARCHITECT. PROVIDE BLANK COVERPLATES FOR UNUSED OUTLETS. COVERPLATES FOR MULTI-GANG BOXES SHALL BE SIZED FOR THE BOX IT COVERS.
- BRANCH CIRCUITS SHALL USE MINIMUM NO. 12 AWG WIRING FOR BRANCH CIRCUITS, PROTECTED BY 20 AMPERE CIRCUIT BREAKERS. CONTROL WIRING MAY BE NO. 14 MINIMUM.
- DO NOT INSTALL EXPOSED CONDUIT IN AREAS OPEN TO THE PUBLIC. EXPOSED CONDUIT MAY BE INSTALLED AT SURFACE-MOUNTED EQUIPMENT AND OTHER LOCATIONS ACCEPTABLE TO THE ARCHITECT. RUN EXPOSED CONDUIT PARALLEL TO, AND AT RIGHT ANGLES WITH, THE BUILDING LINES.
- USE FLEXIBLE METALLIC CONDUIT FOR CONNECTIONS TO MOTORS, FIXTURES, OR OTHER EQUIPMENT WHERE VIBRATION IS ENCOUNTERED. PROVIDE SEAL-TITE FLEXIBLE METALLIC CONDUIT IN WET AREAS.
- PROVIDE A GROUND WIRE IN NON-METALLIC CONDUIT AND FLEXIBLE CONDUIT. GROUND WIRES SHALL BE INCREASED IN SIZE WHERE CIRCUIT WIRING IS INCREASED FOR VOLTAGE DROP. CIRCUITS FED THROUGH AFCI BREAKERS SHALL HAVE SEPARATE NEUTRALS.
- PROVIDE CIRCUIT BREAKER-TYPE LOADCENTERS AS DETAILED ON THE DRAWINGS. BREAKERS SHALL BE FULL WIDTH, THERMAL-MAGNETIC, PLUG-IN TYPE. PROVIDE MULTI-POLE BREAKERS WITH COMMON TRIP AND SINGLE OPERATING HANDLE. HANDLE TIES ARE ACCEPTABLE FOR MULTI-WIRE BRANCH CIRCUITS. PROVIDE SEPARATE GROUND BUS. PROVIDE A TYPED DIRECTORY IN A DIRECTORY FRAME. PROVIDE LABEL IDENTIFYING SOURCE SUPPLY. DIRECTORY AND LABEL SHALL COMPLY WITH NEC 408.4(A&B). INSTALL TRIMS AND DOORS WITH PRIMER COATS IN FINISHED AREAS. PROVIDE ONE SPARE 3/4" CONDUIT FOR EACH 3 UNUSED POLES IN FLUSH-MOUNTED PANELBOARDS; EXTEND FROM PANELBOARD TO AN ACCESSIBLE POINT ABOVE A HUNG CEILING; CAP AND IDENTIFY.
 - LOAD CENTERS SHALL BE SQUARE D TYPE GO.
- PROVIDE NORMAL DUTY, ENCLOSED, FUSIBLE AND NON-FUSIBLE SAFETY SWITCHES IN ENCLOSURES SUITABLE FOR THE SURROUNDING AREA AND CONDITIONS. LABEL SWITCHES FOR FEEDER OR MOTOR SUPPLIED.
- PROVIDE BRANCH CIRCUITS, FEEDERS, JUNCTION BOXES, DISCONNECT SWITCHES, ETC AS REQUIRED FOR A COMPLETE SYSTEM; MAKE POWER CONNECTIONS TO MOTORS AND CONTROLS FOR HEATING, VENTILATING, AIR CONDITIONING, PLUMBING, AND OWNER FURNISHED EQUIPMENT AS REQUIRED.
- PROVIDE AN ELECTRONICALLY OPERATED, DOUBLE SUPERVISED, CLOSED CIRCUIT ADDRESSABLE TYPE FIRE ALARM SYSTEM CONSISTING OF A CONTROL PANEL, MANUAL PULL STATIONS, ALARM SIGNALS, AUTOMATIC SMOKE AND HEAT DETECTORS, SPRINKLER MONITOR MODULES, ANNUNCIATOR, AND CONTROL RELAYS AS REQUIRED, AND WIRED IN ACCORDANCE WITH THE MANUFACTURERS INSTRUCTIONS TO MAKE A COMPLETE AND WORKABLE SYSTEM AS HERINAFTER DESCRIBED.

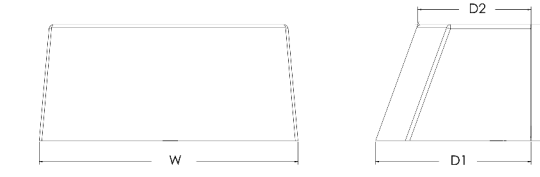


ARC1 LED
Architectural Wall Luminaire



Specifications

Depth (D1): 4.5"
Depth (D2): 4.75"
Height: 5"
Width: 11"
Weight: 7 lbs
(without options)



ARC LED Family Overview

Luminaire	Standard EM, 0°C	Cold EM, -30°C	Approximate Lumens (1000K)				
			P1	P2	P3	P4	P5
ARC1 LED	4W	--	1,500	2,000	3,000	--	--
ARC2 LED	4W	8W	1,500	2,000	3,000	4,000	6,500

Ordering Information

Series	Package	Color Temperature	Voltage	Options	Finish
ARC1 LED	P1 1,500 Lumens	30K 3000K	MVOLT	E4WH Emergency battery backup, CE compliant (W, 0°C min) PE Bottom type photoreflex for dusk-to-dawn operation DMS 0-10V dimming wire-paired remote fixture (for use with an external control, ordered separately)	D0BK0 Dark bronze DRL00 Black DML00 Liquid aluminum
	P2 2,000 Lumens	40K 4000K	347V	SP05V 6kV surge protection FAD Field adjustable light output device. Allows for on-site adjustment to the desired light levels, from 20% to 100%.	DW0K0 White DS0D0 Sandstone D0BK0 Textured dark bronze DRL00 Textured black DML00 Textured liquid aluminum
	P3 3,000 Lumens	50K 5000K			DWH00 Textured white DS0D0 Textured sandstone

Accessories

W0800 00000 U Surface-mounted back box (typical finish)

NOTES

- 347V not available with E4WH.
- FAD not available with DMS.



COMMERCIAL OUTDOOR One Lithonia Way • Conyers, Georgia 30012 • Phone: 1-800-705-SEEV (7378) • www.lithonia.com
© 2020-2022 Acuity Brands Lighting, Inc. All rights reserved. ARC1 LED Rev. 03/20/22



ARIA
2300K2

SMALL WALL MOUNT LANTERN
Aria is a contemporary style that effortlessly complements the facade of any exterior. Its modern shape in durable aluminum is enhanced by a stainless steel mesh shade. Aria's high style and low maintenance comes standard Dark Sky compliant.

DETAILS	
FINISH:	Buckeye Bronze
MATERIAL:	Aluminum
DIMMABLE:	YES, CL TYPE DIMMER (SSL7A)

DIMENSIONS	
WIDTH:	5.3"
HEIGHT:	15.5"
WEIGHT:	2lb
BACK PLATE:	4.5"W X 8.25"H
EXTENSION:	6.8"
TOP TO OUTLET:	5"

LIGHT SOURCE	
LIGHT SOURCE:	Socketted
LED NAME:	6.5W/R20-30K
WATTAGE:	1 x 6.5W Med. LED *Included, 50w Equiv.
VOLTAGE:	120v
COLOR TEMP:	3000
CR:	90
INCANDESCENT EQUIVALENCY:	1 x 50w
DIMMABLE:	YES, CL TYPE DIMMER (SSL7A)

SHIPPING	
CARTON LENGTH:	17.5
CARTON WIDTH:	9
CARTON HEIGHT:	7.5
CARTON WEIGHT:	3

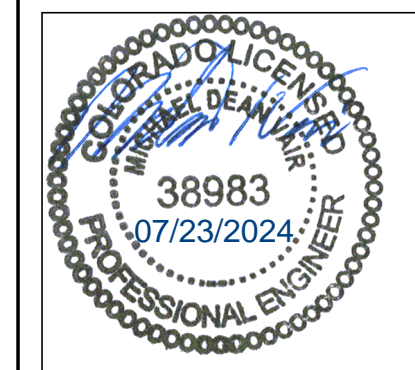
PRODUCT DETAILS:

- Suitable for use in wet (outdoor direct rain) locations as defined by NEC and CEC. Meets United States UL Underwriters Laboratories & CSA Canadian Standards Association Product Safety Standards
- Fixture is Dark Sky compliant and engineered to minimize light glare upward into the night sky
- 2-year finish warranty
- LED Bulbs carry a 3-year limited warranty
- Angular lines, a bold finish and robust details create an industrial edge to add flair to any type of facade

REVIEWED FOR CODE COMPLIANCE
08/06/2024

HINKLEY

HINKLEY 33001 Pin Oak Parkway Avon Lake, OH 44012
PHONE: (440) 653-5500
Toll Free: 1 (800) 446-0039
hinkley.com



NOTICE: DUTY OF COOPERATION
Release of these plans constitutes further cooperation among the owner, its contractor and the architect. Design and construction are complex. Although the architect and his consultants have performed their services with due care and diligence, they cannot guarantee perfection. Communication is important and every contingency cannot be anticipated. Any ambiguity or discrepancy discovered by the use of these plans shall be reported immediately to the architect. Failure to notify the architect compounds misunderstanding and increases construction costs. A failure to cooperate by a simple notice to the architect shall relieve the architect from responsibility for the consequences. Changes made from the plans without consent of the architect are unauthorized and shall relieve the architect of responsibility for all consequences arising out of such changes.

All design, documents and data prepared by Eric Smith Associates, P.C. as instruments of service shall remain property of Eric Smith Associates, P.C. and shall not be copied, changed or disposed in any form whatsoever without first obtaining the express written consent of Eric Smith Associates, P.C.
Eric Smith Associates, P.C.

REVISIONS

No.	Description	Date
1	BDC	07/23/24

PARKING GARAGE SOUTH
THE LODGE AT STEAMBOAT
2700 VILLAGE DR.
STEAMBOAT SPRINGS, CO



Job Number: 25019
Date: 08.27.2024
Drawn By: CY
Checked By: MV

Project Phase
PERMIT SET

Sheet Title
ELECTRICAL DETAILS

Sheet Number
E3.2