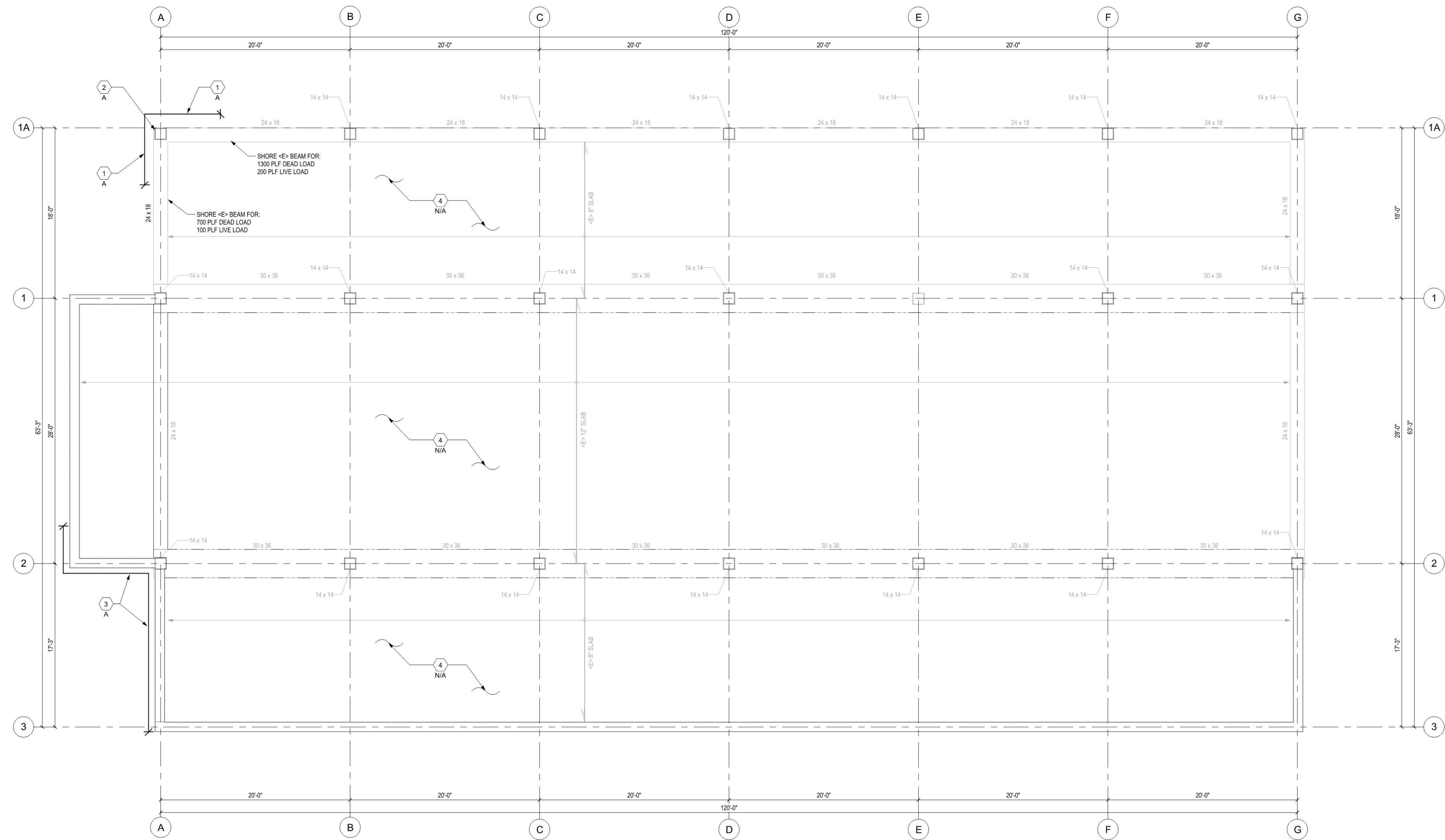


NOTICE OF COOPERATION
Release of these plans contemplates further cooperation among the owner, the contractor and the architect. Design and construction are complex. Although the architect and his consultants have performed their services with due care and diligence, they cannot guarantee perfection. Communication is imperfect and every contingency cannot be anticipated. Any ambiguity or discrepancy discovered by the use of these plans shall be reported immediately to the architect. Failure to notify the architect compounds misunderstanding and increases construction costs. A failure to cooperate by a simple notice to the architect shall release the architect from responsibility for the consequences. Changes made from the plans without consent of the architect are unauthorized and shall relieve the architect of responsibility for all consequences arising out of such changes.
All design, documents and data prepared by Eric Smith Associates, P.C., as instruments of service shall remain property of Eric Smith Associates, P.C. and shall not be copied, changed or disclosed in any form whatsoever without first obtaining the express written consent of Eric Smith Associates, P.C.
Eric Smith Associates, P.C.

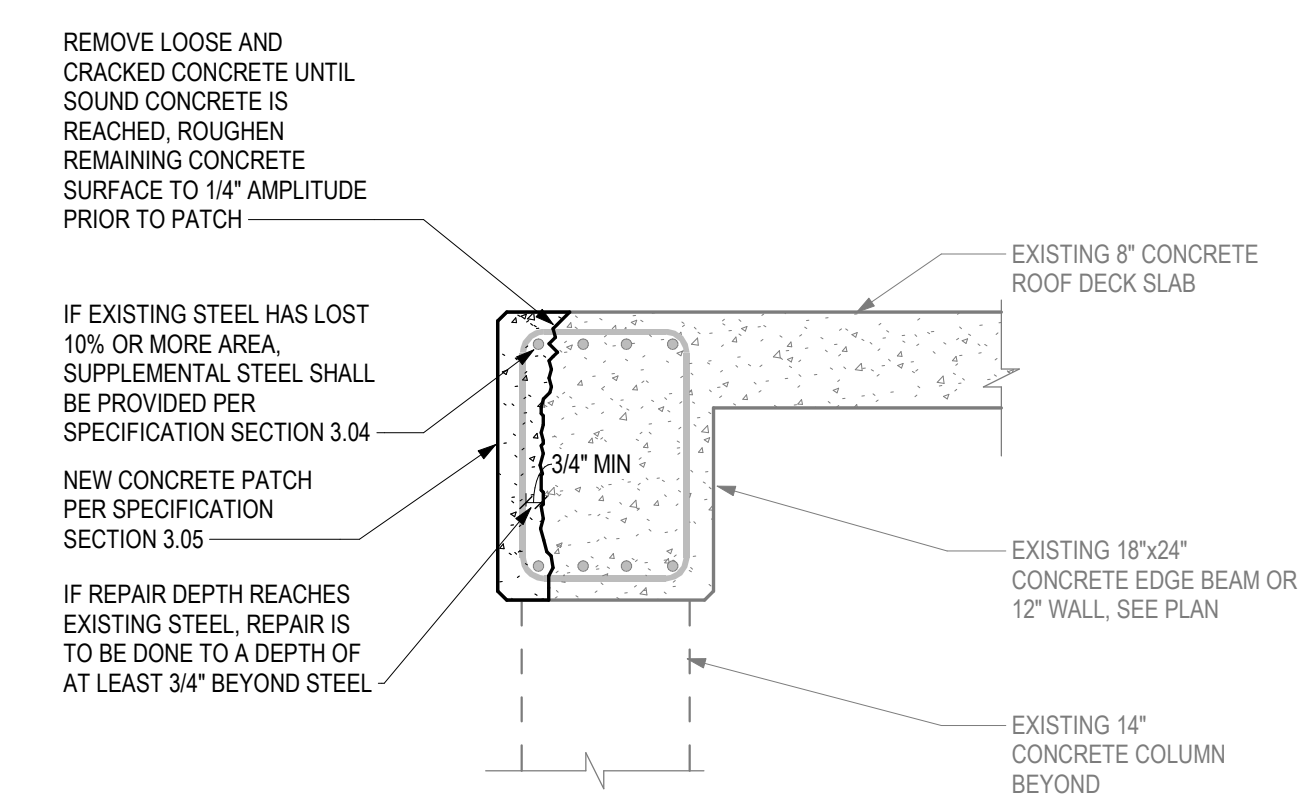
REVISIONS

No.	Description	Date
PERMIT DOCUMENTS		08/31/23



REVIEWED FOR CODE COMPLIANCE
08/06/2024

MAIN LEVEL REPAIRS PLAN
3/16" = 1'-0"
NORTH



2 REPAIR PATCH
NOT TO SCALE

REPAIR SCHEDULE		
REPAIR TYPE	DESCRIPTION	REPAIR TYPE
1	EXTENSIVE SPALLING AND DELAMINATION OF CONCRETE BEAM. CORROSION OF EXPOSED REBAR. APPROXIMATE EXTENTS SHOWN ON PLAN IN NEED OF REPAIR.	A
2	SPALLING/CRAacking AND DELAMINATION OF CONCRETE COLUMN. CORROSION OF EXPOSED REBAR. APPROXIMATE EXTENTS SHOWN ON PLAN IN NEED OF REPAIR.	A
3	SPALLING AND DELAMINATION OF CONCRETE SLAB AT TOP OF WALL. CORROSION OF EXPOSED REBAR. APPROXIMATE EXTENTS SHOWN ON PLAN IN NEED OF REPAIR.	A
4	NEW CONSTRUCTION SHALL NOT COMMENCE UNTIL AFTER REPAIR WORK HAS BEEN COMPLETED AND INSPECTED PER INSPECTION NOTES. CONTRACTOR TO REVIEW ALL EXISTING CONDITIONS AND CONTACT ANTHEM FOR CONDITIONS THAT DIFFER FROM PLANS FOR ADDITIONAL REPAIR RECOMMENDATIONS.	N/A
5	OUTSIDE CORNER OF CONCRETE COLUMN HAS PIECE MISSING ROUGHLY 2' ABOVE GRADE. APPEARS IT MAY BE ORIGINAL TO CONSTRUCTION DUE TO HONEYCOMBING WHILE CONCRETE PLACEMENT.	B
6	WATER WAS OBSERVED ON INSIDE FACE OF CONCRETE FOUNDATION WALL. WATER APPEARED TO BE ENTERING THROUGH A CRACK IN WALL IN MULTIPLE LOCATIONS.	C

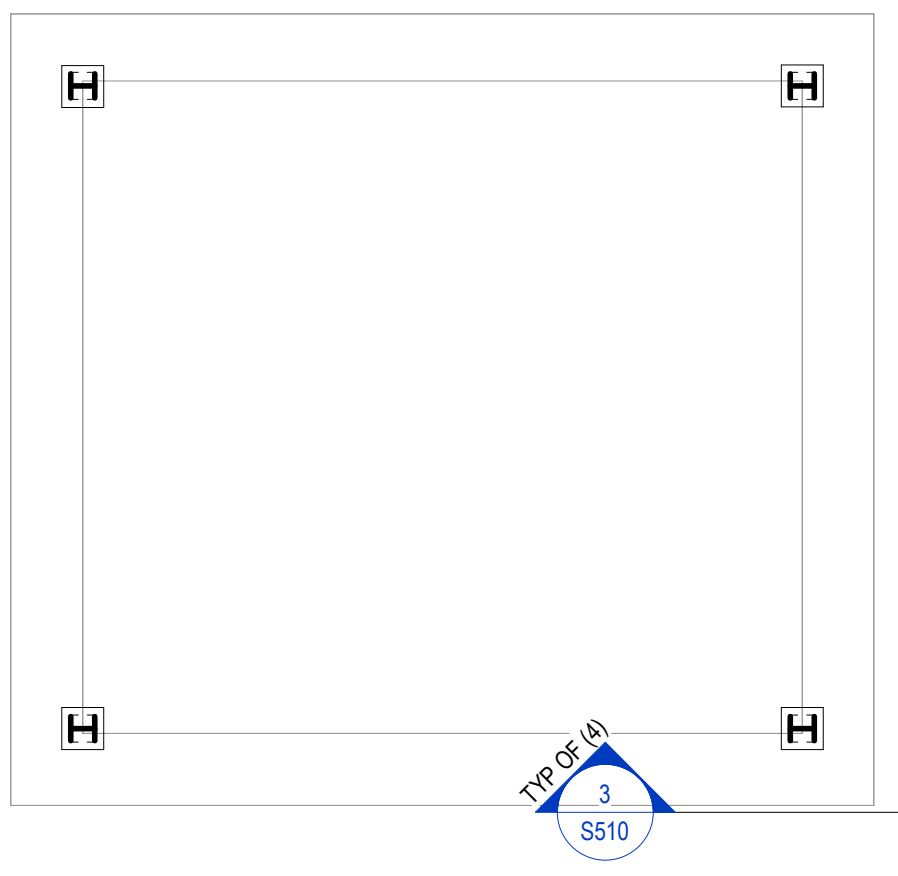
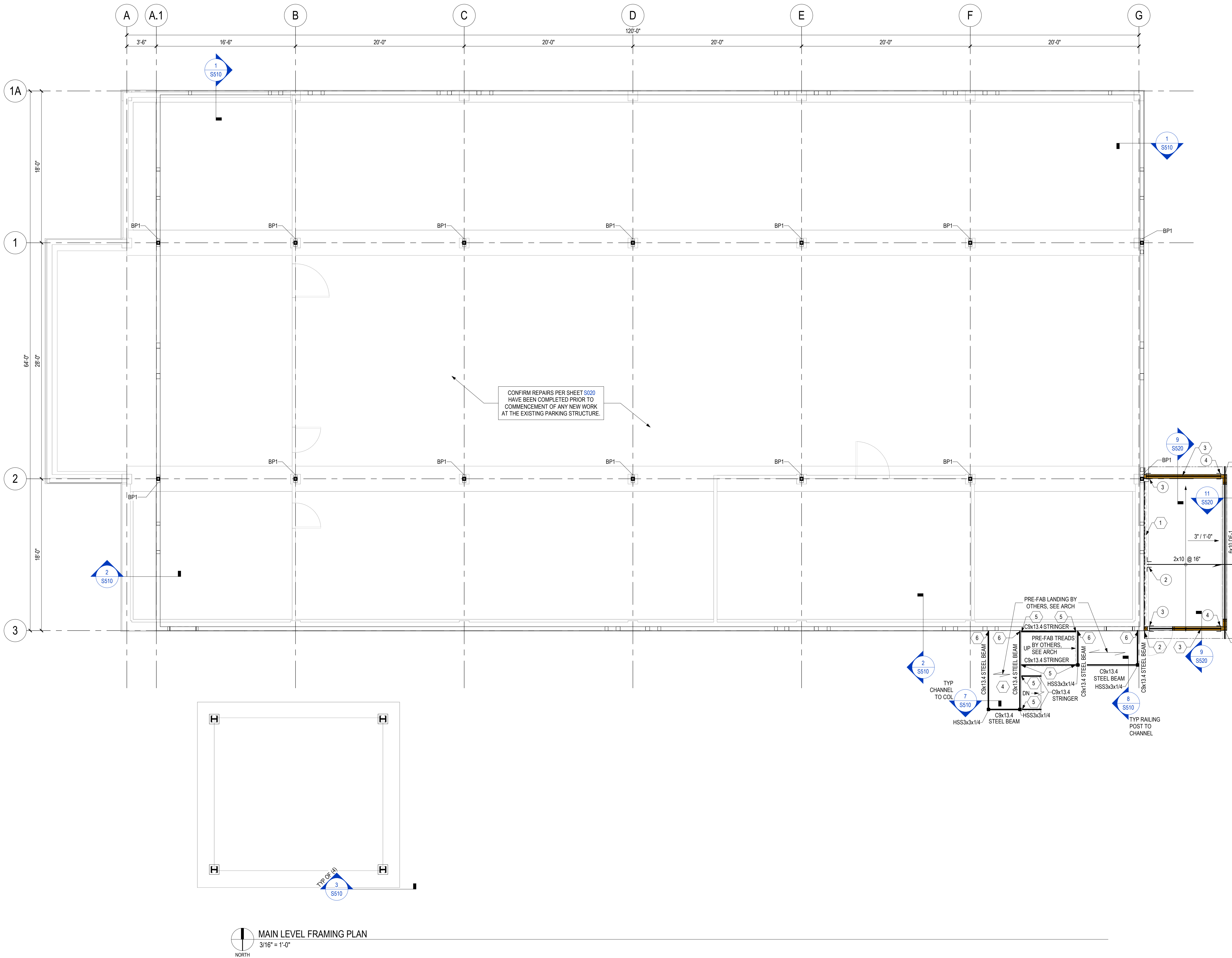
REPAIR TYPE	DESCRIPTION
A	REMOVE LOOSE AND CRACKED CONCRETE COMPLETELY UNTIL SOUND CONCRETE IS REACHED. IF CONCRETE IS REMOVED AROUND REBAR, REMOVE TO A DEPTH OF 3/4" MIN BEYOND REBAR. CLEAN AND REMOVE RUST COMPLETELY FROM EXPOSED REBAR. IF SECTION LOSS IS MORE THAN 10% ON ANY BAR, SUPPLEMENTARY REINFORCING WILL NEED TO BE PROVIDED. SEE DETAIL 2/S020 AND SPECIFICATION ON SHEET S001 FOR ADDITIONAL INFORMATION.
B	REMOVE ANY LOOSE CONCRETE COMPLETELY UNTIL SOUND CONCRETE IS REACHED. IF REBAR IS EXPOSED, SEE REPAIR TYPE "A" FOR ADDITIONAL INFORMATION. SEE SPECIFICATION ON SHEET S001 FOR PATCH MATERIAL/INFORMATION.
C	WATERPROOFING ON EXTERIOR FACE OF WALL WILL NEED TO BE PATCHED/REPAIRED AND ADEQUATE DRAINAGE AWAY FROM WALL SHALL BE PROVIDED TO PREVENT FUTURE WATER PENETRATION. ONCE EXTERIOR FACE OF WALL IS EXPOSED, CONCRETE AND REINFORCEMENT SHALL BE INSPECTED FOR SOUNDNESS AND PATCHED/REPAIRED PER TYPE "A" ABOVE.

PARKING GARAGE SOUTH
THE LODGE AT STEAMBOAT
2700 VILLAGE DR.
STEAMBOAT SPRINGS, CO



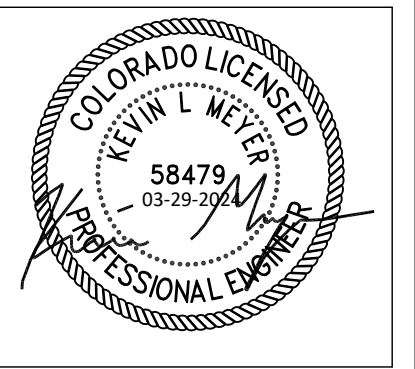
Job Number: 23-019
Date: 05/29/24
Drawn By: ABM
Checked By: SCT

Project Phase
PERMIT DOCUMENTS
Sheet Title
MAIN LEVEL REPAIRS PLAN
Sheet Number
S020



MAIN LEVEL FRAMING PLAN
3/16" = 1'-0"
NORTH

CONFIRM REPAIRS PER SHEET S020 HAVE BEEN COMPLETED PRIOR TO COMMENCEMENT OF ANY NEW WORK AT THE EXISTING PARKING STRUCTURE.



MAIN LEVEL PLAN NOTES:

- SEE S000 & S010 FOR GENERAL STRUCTURAL NOTES, ABBREVIATIONS KEY AND LEGEND
- SEE S510 FOR SCHEDULES
- REFER TO ARCHITECTURAL DRAWINGS FOR ADDITIONAL INFORMATION AND DIMENSIONS.
- VIF (E) CONDITIONS PRIOR TO NEW CONSTRUCTION AND NOTIFY ANTHEM OF ANY DISCREPANCIES
- WALL FRAMING AND COLUMNS SHOWN SUPPORT THE FRAMING ON THIS LEVEL
- ROOF CONSTRUCTION (UNO):** 5/8" NOMINAL APA 40/20 RATED SHEATHING OVER PE TRUSSES / RAFTERS SEE PLAN. FASTEN SHEATHING TO TRUSSES / RAFTERS, RIMS, AND LEDGERS WITH 10d GUN NAILS (0.131" x 3") @ 6" ALONG PANEL EDGES AND @ 12" ALONG INTERMEDIATE FRAMING MEMBERS. LAY PANELS PERPENDICULAR TO FRAMING MEMBERS AND STAGGER PANEL JOINTS.
- TYPICAL TRUSS / RAFTER TIE DOWN:** H2.5T AT BEARING, (2) CLIPS WITHIN 8'-0" OF CORNERS (UNO)
- TYPICAL GIRDER TRUSS / ROOF BEAM TIE DOWN:** (2) HTS20 (OR ST22 STRAP) EACH END AT BEARING (UNO)
- EXTERIOR WALL CONSTRUCTION (UNO):** 2x6 STUDS @ 16" SHEATHED WITH 7/16" CDX PLYWOOD OR OSB, APA 2416 ON EXTERIOR FACE. NAIL WALL SHEATHING WITH 8d GUN NAILS (0.131" x 3") @ 6" AT PANEL EDGES AND BOUNDARIES AND @ 12" IN FIELD OF PANEL. BLOCK AND NAIL ALL EDGES BETWEEN STUDS.
- WALL OPENING CONSTRUCTION (UNO):** (2) 2x6 HEADER W/ MINIMUM (1) 2x6 TRIM AND (1) 2x6 KING STUD EACH END.

NOTICE OF COOPERATION
Release of these plans contemplates further cooperation among the owner, the contractor and the architect. Design and construction are complex. Although the architect and his consultants have performed their services with due care and diligence, they cannot guarantee perfection. Communication is important and every contingency cannot be anticipated. Any ambiguity or discrepancy discovered by the use of these plans shall be reported immediately to the architect. Failure to notify the architect compounds misunderstanding and increases construction costs. A failure to cooperate by a simple notice to the architect shall release the architect from responsibility for the consequences. Changes made from the plans without consent of the architect are unauthorized and shall release the architect of responsibility for all consequences arising out of such changes.
All design, documents and data prepared by Eric Smith Associates, P.C. as instruments of service shall remain property of Eric Smith Associates, P.C. and shall not be copied, changed or disclosed in any form whatsoever without first obtaining the express written consent of Eric Smith Associates, P.C.
Eric Smith Associates, P.C.

REVISIONS

No.	Description	Date
PERMIT DOCUMENTS		08/31/23

REVIEWED FOR CODE COMPLIANCE
08/06/2024

MAIN LEVEL KEYNOTE SCHEDULE

X	DESCRIPTION
1	2x10 LEDGER ATTACH TO EACH (N) WALL STUD W/ (3) 4 1/2" SDS SCREWS @ 3" (16" MAX)
2	FASTEN (N) END STUD INTO (E) CONC COLUMN W/ HILTI X-CP POWDER ACTUATED FASTENERS @ 6" FULL HT
3	6x8 LOW TOP PL BTWIN (E) CONC COL & (N) WOOD COL. FASTEN TO (E) CONC COL W/ HANGER 3" & TO (N) WOOD COL W/ HANGER 4"
4	SEE APPROVED ARCH/SHOP DRAWINGS FOR STAIR & LANDING FRAMING.
5	ATTACH STRINGER TO BEAMS PER SHEAR TAB SCHEDULE ON S510; OPTION TO FIELD WELD STRINGERS WITH 3/16" FILLET ALL AROUND
6	PROVIDE 9"x6"x1/4" THICK END PLATE AND ATTACH TO (E) CONCRETE WALL w/ (4) 3/8"x4" TITEN HD ANCHORS AT 4" GAUGE, VERIFY (E) CONCRETE WALL IN FIELD

HANGER SCHEDULE

1. ALL HANGERS NOTED TO BE INSTALLED WITH NUMBER AND SIZE FASTENERS SPECIFIED BY MNFR. ANY SUBSTITUTIONS SHALL BE REVIEWED AND APPROVED BY ANTHEM.

2. INSTALL HANGERS NOTED OR APPROVED EQUIVALENT

3. JOIST FASTENERS ARE FASTENERS INTO THE HANGING MEMBER (BEING SUPPORTED)

4. HEADER FASTENERS ARE INTO THE MEMBER/WALL SUPPORTING THE HANGING MEMBER

X	HANGER	JOIST FASTENERS	HEADER FASTENERS
1	PER TRUSS MNFR		
2	LUS28	(4) 0.148" Ø x 1 1/2" NAILS	(6) 0.148" Ø x 1 1/2" NAILS
3	HUC68	(4) 0.162" Ø x 3 1/2" NAILS	(10) 1/4" Ø x 1 3/4" TITEN TURBO SCREWS
4	HUC68	(4) 0.162" Ø x 3 1/2" NAILS	(10) 0.162" Ø x 3 1/2" NAILS
5	HUC210-3	(6) 0.148" Ø x 3" NAILS	(14) 0.162" Ø x 3 1/2" NAILS
6	HGUSS.50/10	(16) 0.162" Ø x 3 1/2" NAILS	(46) 0.162" Ø x 3 1/2" NAILS

PARKING GARAGE SOUTH
THE LODGE AT STEAMBOAT
2700 VILLAGE DR.
STEAMBOAT SPRINGS, CO

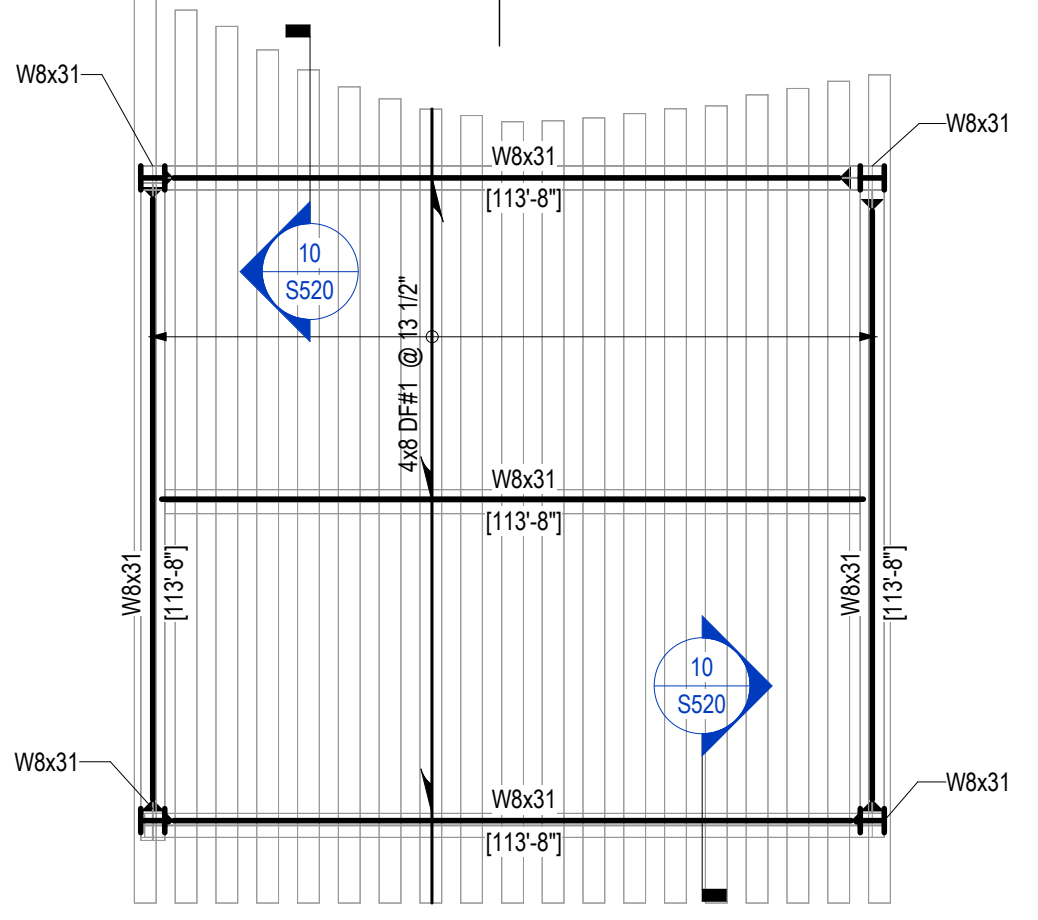
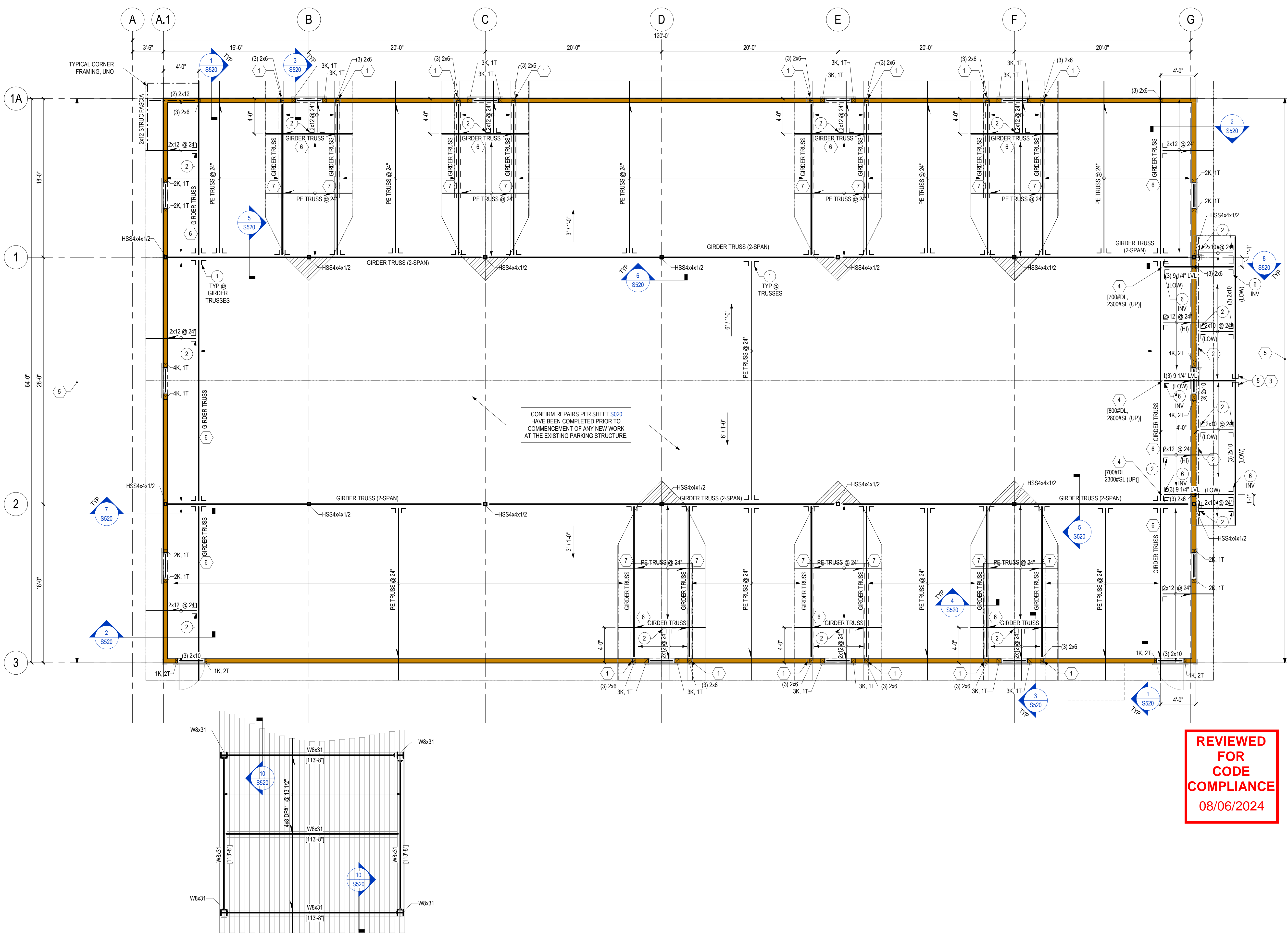
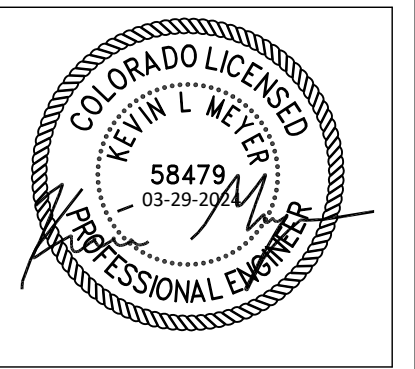


Job Number: 23-019
Date: 05/29/24
Drawn By: ABM
Checked By: SCT

Project Phase
PERMIT DOCUMENTS

Sheet Title
MAIN LEVEL FRAMING PLAN

Sheet Number
S110



ROOF FRAMING PLAN
3/16" = 1'-0"
NORTH

- ROOF LEVEL PLAN NOTES:**
- SEE S000 & S010 FOR GENERAL STRUCTURAL NOTES, ABBREVIATIONS KEY AND LEGEND
 - SEE S510 FOR SCHEDULES
 - SEE S520 FOR TYPICAL DETAILS
 - TOP PLATE HEIGHT = SEE ARCH
 - WALL FRAMING AND COLUMNS SHOWN SUPPORT THE FRAMING ON THIS LEVEL
 - REFER TO ARCHITECTURAL DRAWINGS FOR ADDITIONAL INFORMATION AND DIMENSIONS
 - ROOF CONSTRUCTION (UNO):** 3/8" NOMINAL APA 40/20 RATED SHEATHING OVER PE TRUSSES / RAFTERS SEE PLAN. FASTEN SHEATHING TO TRUSSES / RAFTERS, RIMS, AND LEDGERS WITH 10d GUN NAILS (0.131" x 3") @ 6" ALONG PANEL EDGES AND @ 12" ALONG INTERMEDIATE FRAMING MEMBERS. LAY PANELS PERPENDICULAR TO FRAMING MEMBERS AND STAGGER PANEL JOINTS
 - TYPICAL TRUSS / RAFTER TIE DOWN:** (2) HTS20 CLIPS WITHIN 8'-0" OF CORNERS (UNO)
 - TYPICAL GIRDER TRUSS / ROOF BEAM TIE DOWN:** (2) HTS20 (OR ST22 STRAP) EACH END AT BEARING (UNO)
 - EXTERIOR WALL CONSTRUCTION (UNO):** 2x6 STUDS @ 16" SHEATHED WITH 7/16" COX PLYWOOD OR OSB, APA 2416 ON EXTERIOR FACE. NAIL WALL SHEATHING WITH 10d GUN NAILS (0.131" x 3") @ 6" AT PANEL EDGES AND BOUNDARIES AND @ 12" IN FIELD OF PANEL. BLOCK AND NAIL ALL EDGES BETWEEN STUDS.
 - WALL OPENING CONSTRUCTION (UNO):** (2) 2x6 HEADER W/ MINIMUM (1) 2x6 TRIM AND (1) 2x6 KING STUD EACH END.
 - INDICATES OVERFRAMING:** CONTINUE PRIMARY ROOF SHEATHING BELOW OVERFRAMED AREAS. OVERFRAME WITH RAFTERS/TRUSSES SPACED 24" MAX. PLACE RAFTERS/TRUSSES PERPENDICULAR TO FRAMING BELOW.

TRUSS SUPPLIER NOTE:
DESIGN ALL ROOF TRUSSES TO CLEAR SPAN TO BEARING WALLS AND SUPPORT BEAMS AS INDICATED ON PLAN.

DESIGN LOADS ARE AS FOLLOWS:
DEAD LOAD BOTTOM CHORD: 0 PSF
DEAD LOAD TOP CHORD: 20 PSF
SNOW LOAD TOP CHORD: 95 PSF

LIMIT DEFLECTIONS TO:
SPAN/360 FOR LIVE LOAD
SPAN/240 FOR TOTAL LOAD

DESIGN TRUSSES FOR DRAG, POINT AND UNIFORM LOADS CALLED OUT ON PLANS.

ALL TRUSS TO TRUSS CONNECTIONS TO BE DESIGNED AND SUPPLIED BY THE TRUSS MANUFACTURER UNO. TRUSS FABRICATOR SHALL SUBMIT SHOP DRAWINGS AND CALCULATIONS STAMPED BY A REGISTERED PROFESSIONAL ENGINEER IN THE STATE IN WHICH THE PROJECT IS LOCATED TO ENGINEER OF RECORD (EOR) FOR REVIEW PRIOR TO FABRICATION.

REFER TO ARCHITECTURAL DRAWINGS FOR TRUSS HEEL HEIGHTS AND PROFILES.

DO NOT ALTER TRUSS LAYOUT WITHOUT EOR PRIOR APPROVAL.

BEARING DESIGN SHALL ASSUME DOUG-FIR WALL TOP PLATES (625 PSI). USE MULTIPLE PLIES, BEARING BLOCKS, OR BEARING ENHANCERS TO ACCOMMODATE BEARING LENGTHS PER PLAN. THE USE OF END GRAIN BEARING IS NOT ACCEPTABLE, UNLESS SPECIFICALLY APPROVED BY THE EOR FOR THE PROJECT.

NO CEILING WILL BE PROVIDED SO ALL TRUSS BRACING TO BE PROVIDED BY MANUFACTURER.

ROOF KEYNOTE SCHEDULE

X	DESCRIPTION
1	STEP DOUBLE TOP PL
2	2x10 LEDGER ATTACH TO EA STUD W/ (2) 4 1/2" SDS SCREWS (16" MAX)
3	SEAT CUT SLOPED BEAM FOR FLAT BEARING IN HANGER
4	TRUSS MNFR TO PROVIDE 1'-2" MIN WIDE MEMBER TO ACCEPT HANGER
5	RAKED STUD WALL. PROVIDE 2x6 LVL STUDS @ 12" FOR WALL HEIGHT BETWEEN 12'-15'. PROVIDE (2) 2x6 LVL STUDS @ 12" FOR WALL HEIGHT GREATER THAN 15'.
6	DL = 50PLF, SL = 200PLF
7	DL = 100PLF, SL = 500PLF

HANGER SCHEDULE

1. ALL HANGERS NOTED TO BE INSTALLED WITH NUMBER AND SIZE FASTENERS SPECIFIED BY MNFR. ANY SUBSTITUTIONS SHALL BE REVIEWED AND APPROVED BY ANTHEM.

2. INSTALL HANGERS NOTED OR APPROVED EQUIVALENT

3. JOIST FASTENERS ARE FASTENERS INTO THE HANGING MEMBER (BEING SUPPORTED)

4. HEADER FASTENERS ARE INTO THE MEMBER/WALL SUPPORTING THE HANGING MEMBER

X	HANGER	JOIST FASTENERS	HEADER FASTENERS
1	PER TRUSS MNFR		
2	LUS28	(4) 0.148" Ø x 1 1/2" NAILS	(6) 0.148" Ø x 1 1/2" NAILS
3	HUC68	(4) 0.162" Ø x 3 1/2" NAILS	(10) 1/4" Ø x 1 3/4" TITEN TURBO SCREWS
4	HUC68	(4) 0.162" Ø x 3 1/2" NAILS	(10) 0.162" Ø x 3 1/2" NAILS
5	HUC210-3	(6) 0.148" Ø x 3" NAILS	(14) 0.162" Ø x 3 1/2" NAILS
6	HGUSS.5010	(16) 0.162" Ø x 3 1/2" NAILS	(46) 0.162" Ø x 3 1/2" NAILS

REVIEWED FOR CODE COMPLIANCE
08/06/2024

PARKING GARAGE SOUTH
THE LODGE AT STEAMBOAT
2700 VILLAGE DR.
STEAMBOAT SPRINGS, CO



Job Number: 23-019
Date: 05/29/24
Drawn By: ABM
Checked By: SCT

Project Phase
PERMIT DOCUMENTS

Sheet Title
ROOF FRAMING PLAN

Sheet Number
S120

