









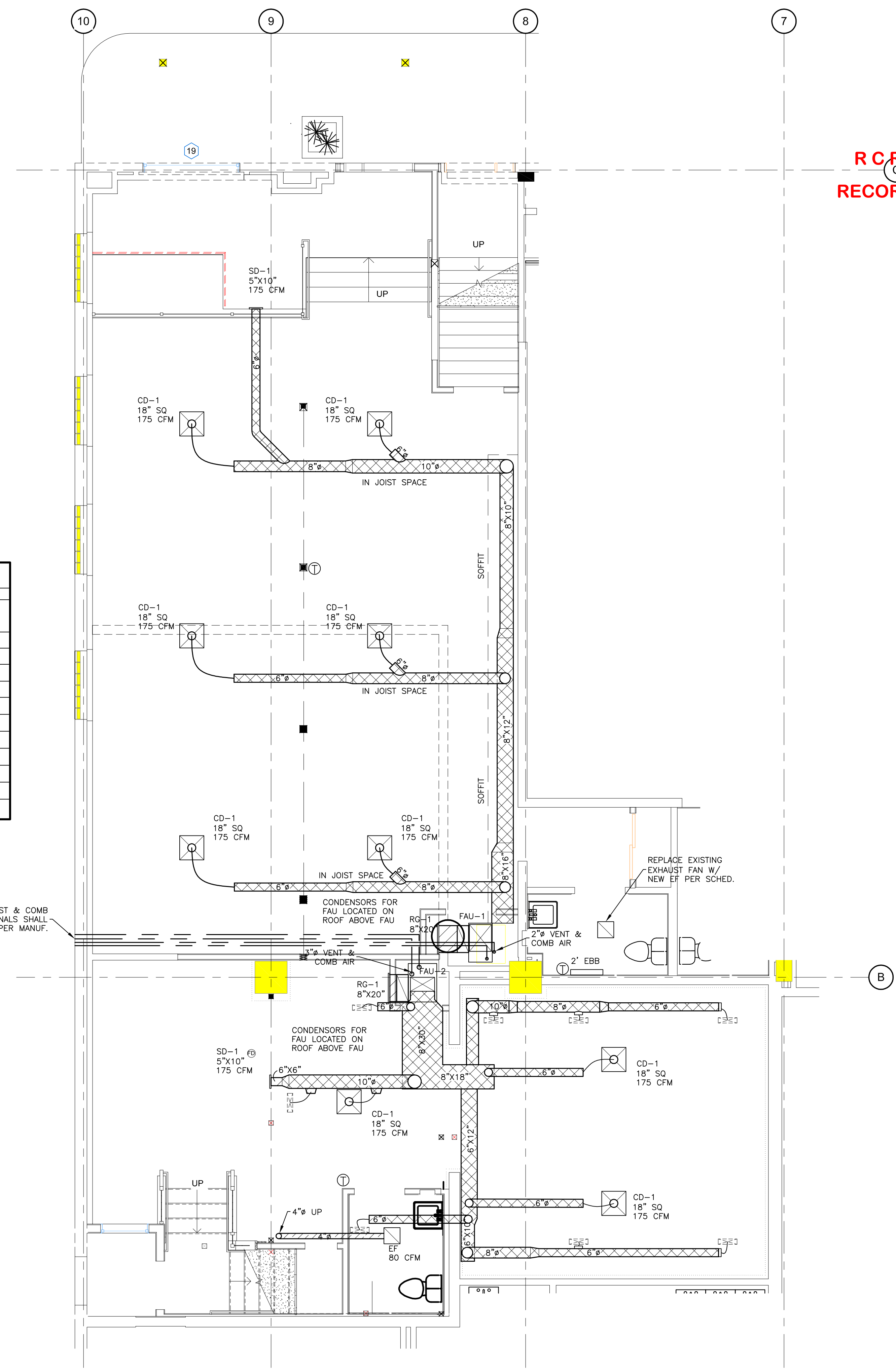








HVAC EQUIPMENT SCHEDULE										
MARK	DESCRIPTION	MANUFACTURE & MODEL	HEATING (MBH)		COOLING (MBU)	CFM @ 0.25 SP (UOM)	ELECTRICAL			REMARKS
			INPUT	OUTPUT			VAC	PHASE	AMPS	
FAU-1	GAS FURNACE	YORK TM9T060B12MP11	60	45	12	1200	120	1	10	
FAU-2	GAS FURNACE	YORK TM9T120D20MP11	120	88	36	2000	208/240	1	11.8	
FAU-3	GAS FURNACE	YORK TM9T060B12MP11	60	45	12	1200	120	1	10	
COND-1	CONDENSOR	YORK YCJF18S41S1	-	-	18.0	-	208/230	1	18.0	
COND-2	CONDENSOR	YORK YCJF30S41S1	-	-	30.0	-	208/230	1	22.0	
COND-3	CONDENSOR	YORK YCJF18S41S1	-	-	18.0	-	208/230	1	18.0	
COIL-1	COOLING COIL	YORK MC18A3XC1	-	-	18.0					
COIL-2	COOLING COIL	YORK MC18B3XC1	-	-	30.0					
COIL-3	COOLING COIL	YORK MC18A3XC1	-	-	18.0					
EF	BATH EXHAUST FAN	PANASONIC FV-05-11VKS1	-	-	-	80	115	1	1.0	
EBB	ELECTRIC BASEBOARD	KING K-2K1205BW	-	500W	-	80	120	1	4.2	



**HVAC LEGEND**

- RETURN AIR DUCT
- SUPPLY AIR DUCT
- EXHAUST AIR DUCT
- FAU — GAS FURNACE
- COND — REMOTE CONDENSER
- SD — SUPPLY DIFFUSER
- CD — CEILING DIFFUSER
- FD — FLOOR DIFFUSER
- RG — RETURN AIR GRILL
- EF — EXHAUST/SUPPLY FAN
- EBB — ELECTRIC BASEBOARD

R C R B D  
RECORD SET

**YVE,**  
YAMPA VALLEY ENGINEERING, INC.

STRUCTURAL  
MECHANICAL  
ENGINEERING  
DESIGN  
DRAFTING  
SERVICES

JAMES STEGMAIER, P.E.  
1794 KAMAR PLAZA  
P.O. BOX 772192  
STEAMBOAT SPRINGS, CO  
80477  
970-870-9229  
yvengr@yvengr.com

**Old West Building  
Tenant Improvement**

1100 Lincoln Ave.  
Steamboat Springs, Colorado

JOB NO: 17-044  
DRAWN: JAS  
DATE: 7-31-17

REVISIONS		
NO.	DATE	DRAWN

SHEET NUMBER  
**M-1**

— MAIN LEVEL HVAC PLAN  
SCALE: 1/4" = 1'-0"

N  
PLAN NORTH

SCALE: 3/4" = 1'-0"

**AIR DISTRIBUTION**

**DESCRIPTION OF WORK**

A. Mechanical contractor shall provide and install FAU, remote condenser, exhaust fans, ducts and grills, registers and diffusers as shown on the plans. Requirements for the air distribution system are as indicated herein.

**MATERIALS**

A. Sheet Metal: Except as otherwise indicated, fabricate ductwork from galvanized sheet steel complying with ASTM A 527, lockforming quality; with g 90 zinc coating in accordance with ASTM A 525; and mill phosphatized for exposed locations.  
 B. All duct dimensions shown are clear area dimensions.

**MISCELLANEOUS DUCTWORK MATERIALS**

A. General: Provide miscellaneous material and products of types and sizes indicated and, where not otherwise indicated, provide type and size required to comply with ductwork system requirements including proper connection of ductwork and equipment.

B. Fittings: Provide radius type fitting fabricated of multiple sections with maximum 15-degree change of direction per section. Use 45-degree laterals and elbows for branch takeoff connections.

C. Low Pressure Flexible Ducts: Duct shall be factory pre-insulated with a solid inner liner formed by a reinforced aluminum laminate material mechanically locked or bonded together by a corrosive resistant galvanized steel helix covered with a minimum 1-1/2" thick fiberglass blanket and sheathed in a polyethylene vapor barrier.

D. Exterior Metal Duct Work: Duct runs on the exterior of the building shall be lined as indicated above but shall be clad with Flex-Clad 400 jacket system.

**FABRICATION**

A. Shop fabricates ductwork in 4, 8, 10 or 12-Ft. lengths.

B. Shop fabricates ductwork of gages and reinforcement complying with SMACNA HVAC Duct Construction Standards.

C. Fabricate duct fittings to match adjoining ducts, and to comply with duct requirements and applicable to fittings. Except as otherwise indicated, fabricate to include turning vanes in elbows where shorter radius is necessary. Limit angular tapers to 30 degrees for contracting tapers and 20 degrees to expanding tapers.

**FACTORY-FABRICATED LOW PRESSURE DUCTWORK**

A. General: At installer's option, provide factory-fabricated duct and fittings, in lieu of shop-fabricated duct and fittings.

B. Material: Galvanized sheet steel complying with ASTM A 527, lock forming quality, with ASTM A 525, G90 zinc coating, mill phosphatized.

C. Gage: 28-gage minimum for round and oval ducts and fittings, 4" through 24" diameter.

D. Elbows: One piece construction for 90 degree and 45 degree elbows 14" and smaller. Provide multiple gore construction for larger diameters with standing seam circumferential joint.

**TURNING VANES**

A. Manufactured Turning Vanes: Provide turning vanes constructed of 1-1/2" wide curved blades set at 3/4" O.C. supported with bars perpendicular to blades set at 2" O.C. and set into side strips suitable for mounting in ductwork.

**INSULATION**

A. All supply or make-up rectangular air duct shall be lined with 1" duct liner insulation.  
 B. All supply or make-up round air duct shall be insulated with 2" foil faced insulation.  
 C. Duct sizes shown are clear opening sizes.

**GRILLS, REGISTERS AND DIFFUSERS**

A. Provide grills, registers and diffusers of manufactures standard air device where shown on the mechanical plans as require for complete installation.

B. Ceiling Compatibility: Provide air devices with border styles that are compatible with adjacent ceiling finish. Owner shall have approval prior to installation.

C. Types: Provide air device of type, capacity and with accessories and finishes as listed on grilles, register and diffuser schedule.

**D. Acceptable Manufacturers:**

- Krueler Mfg. Co.
- Metal Aire Co.
- Tituse Products Div.
- Tuttle and Bailey.

Substitutions are allowed if configuration and free area remains the same and the substitution is agreed to by architect and owner.

**INSTALLATION OF METAL DUCTWORK**

A. Assemble and install ductwork in accordance with recognized industry practices that will achieve airtight and noiseless systems, capable of performing each indicated service. Align ductwork accurately, supporting ducts rigidly and support vertical ducts at every floor.

B. Routing: Locate ductwork runs, vertically and horizontally and avoid diagonal runs whenever possible. Locate runs as indicated by diagrams, detail and notations or, if not otherwise indicated, run ductwork in shortest route, which does not obstruct usable space, or block access for servicing building and its equipment. Coordinate layout with suspended ceiling and lighting layout and similar finished work.

C. Install metal ductwork in accordance with SMACNA HVAC Duct Construction Standards.

D. Turning vanes shall be located in all 90 degrees turns and tees.

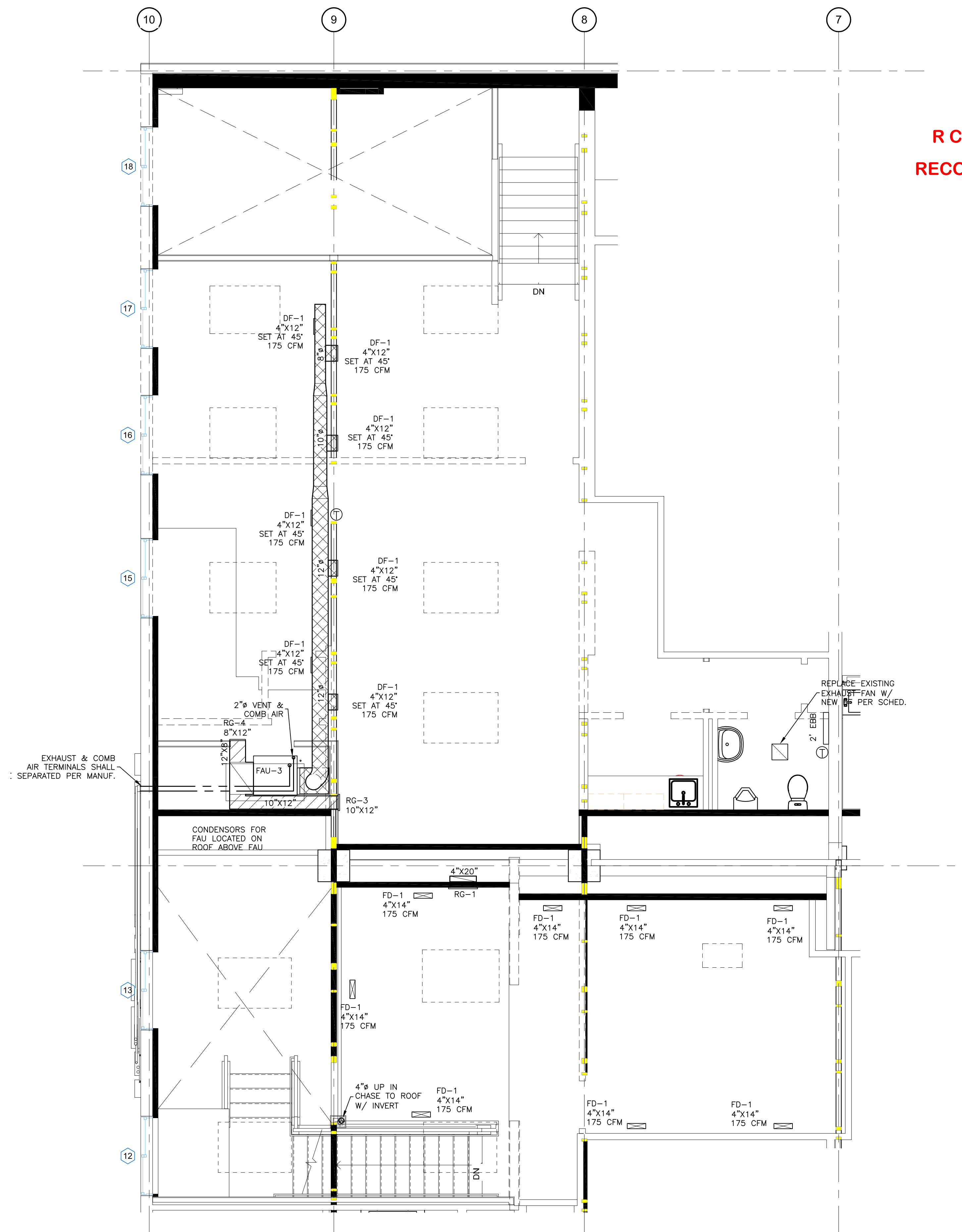
E. Use 45 degree laterals and elbows for branch takeoff connections.

**ADJUSTING AND CLEANING**

Clean duct work internally, of dust and contractor. A balance report shall be furnished to the Project Manager and the Designer.

**Start-up:**

Operate installed system to demonstrate compliance with requirements. Check for leakage while system is operating and adjust or repair as necessary.



UPPER LEVEL HVAC PLAN  
 SCALE: 1/4" = 1'-0"

**HVAC LEGEND**

	RETURN AIR DUCT
	SUPPLY AIR DUCT
	EXHAUST AIR DUCT
FAU	GAS FURNACE
COND	REMOTE CONDENSER
DF	SUPPLY DIFFUSER
CD	CEILING DIFFUSER
FD	FLOOR DIFFUSER
RG	RETURN AIR GRILL
EF	EXHAUST/SUPPLY FAN
EBB	ELECTRIC BASEBOARD

**R C R B D**  
**RECORD SET**

**YVE,**  
 YAMPA VALLEY ENGINEERING, INC.

**STRUCTURAL MECHANICAL ENGINEERING DESIGN DRAFTING SERVICES**

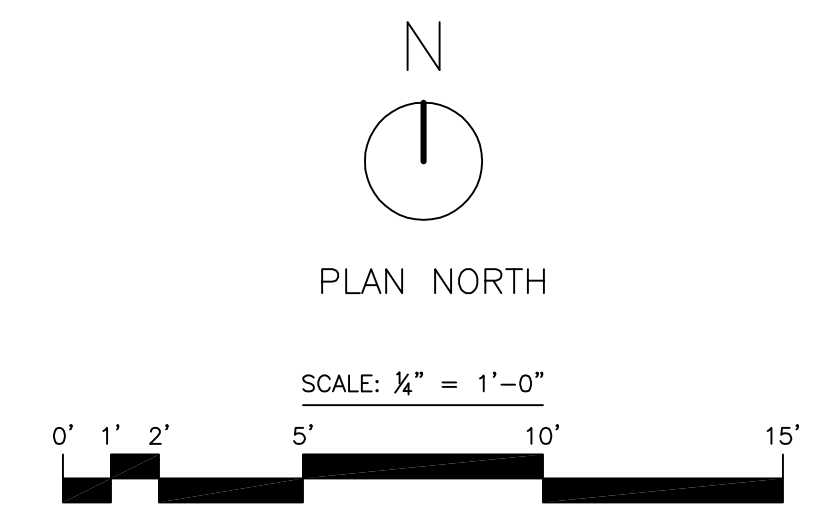
JAMES STEGMAIER, P.E.  
 1794 KAMAR PLAZA  
 P.O. BOX 772192  
 STEAMBOAT SPRINGS, CO 80477  
 970-870-9229  
 yvengr@yvengr.com

**Old West Building  
 Tenant Improvement**  
 1100 Lincoln Ave.  
 Steamboat Springs, Colorado

JOB NO: 17-044  
 DRAWN: JAS  
 DATE: 7-31-17

REVISIONS		
NO.	DATE	DRAWN

SHEET NUMBER  
**M-2**



**Plumbing System**  
 A. Plumbing contractor shall provide all labor, materials and equipment to install water, sewer piping and gas piping where indicated. All work shall be in accordance with the current IBC, IPC and all state and local codes and regulations. Only licensed plumbing contractors shall install water, sewer or gas piping.

B. All appropriate plumbing permits shall be issued prior to work commencing in those areas.

D. Coordinate work with other trades to eliminate conflicts. Verify dimensions and sizes and report errors, conflicts and inconsistencies to the Designer before starting work. Execute work in accordance with best current standard practices to contribute to the efficiency of operation, accessibility, slightness and minimal maintenance. Conform and accommodate systems to building structure, equipment and usage so that they do not interfere with the operation of other systems or operational parts of the building.

**PIPE AND FITTINGS**

A. Domestic Water: All above slab DW piping shall be Type M copper or approved poly piping. All piping products shall comply with ASTM B42-87 and ASTM B 88-86. Joints shall be up of 95-5 tin-antimony solder metal per ASTM B 32-70, alloy Grade 95TA.

B. Drain and Waste Piping - Above and Underground  
 Sewer pipe shall be PVC. PVC pipe and fittings shall comply with ASTM D2665-85. PVC fittings shall correspond to pipe in material, class and ASTM designation

Joints: Solvent cement shall be as specified in ASTM D2564-80 and primer shall be as specified in ASTM F656-80.

**MISCELLANEOUS PIPING MATERIALS/PRODUCTS**

A. Soldering Materials: Provide soldering materials as determined by installer to comply with installation requirements.

B. Piping Connectors for Dissimilar Non-Pressure Pipe: Elastomeric annular ring insert or elastomeric flexible coupling minimizes flexible duct lengths and sharp bends.

**VALVES**

A. General: Provide valves of types and pressure ratings indicated by application and comply with all state and local codes.

**PIPING SYSTEM JOINTS**

A. Thread natural gas pipe in accordance with ANSI B2.1. Cut threads full and clean using sharp dies. Ream threaded ends to remove burrs and restore full inside diameter. Apply pipe joint or pipe tape where recommended by pipe/fitting manufacturer.

B. Solder copper tube-and-fitting joints where indicated, in accordance with recognized industry practice. Cut tube ends squarely, ream to full inside diameter, and clean outside of tube ends and inside of fittings. Use only flux with no lead content.

C. DWV pipe and fittings shall be cleaned using approved primer and glued with approved glue. If outside temperatures are 30 degrees or below, cold weather glues shall be used.

**INSTALLATION OF HANGERS AND SUPPORTS**

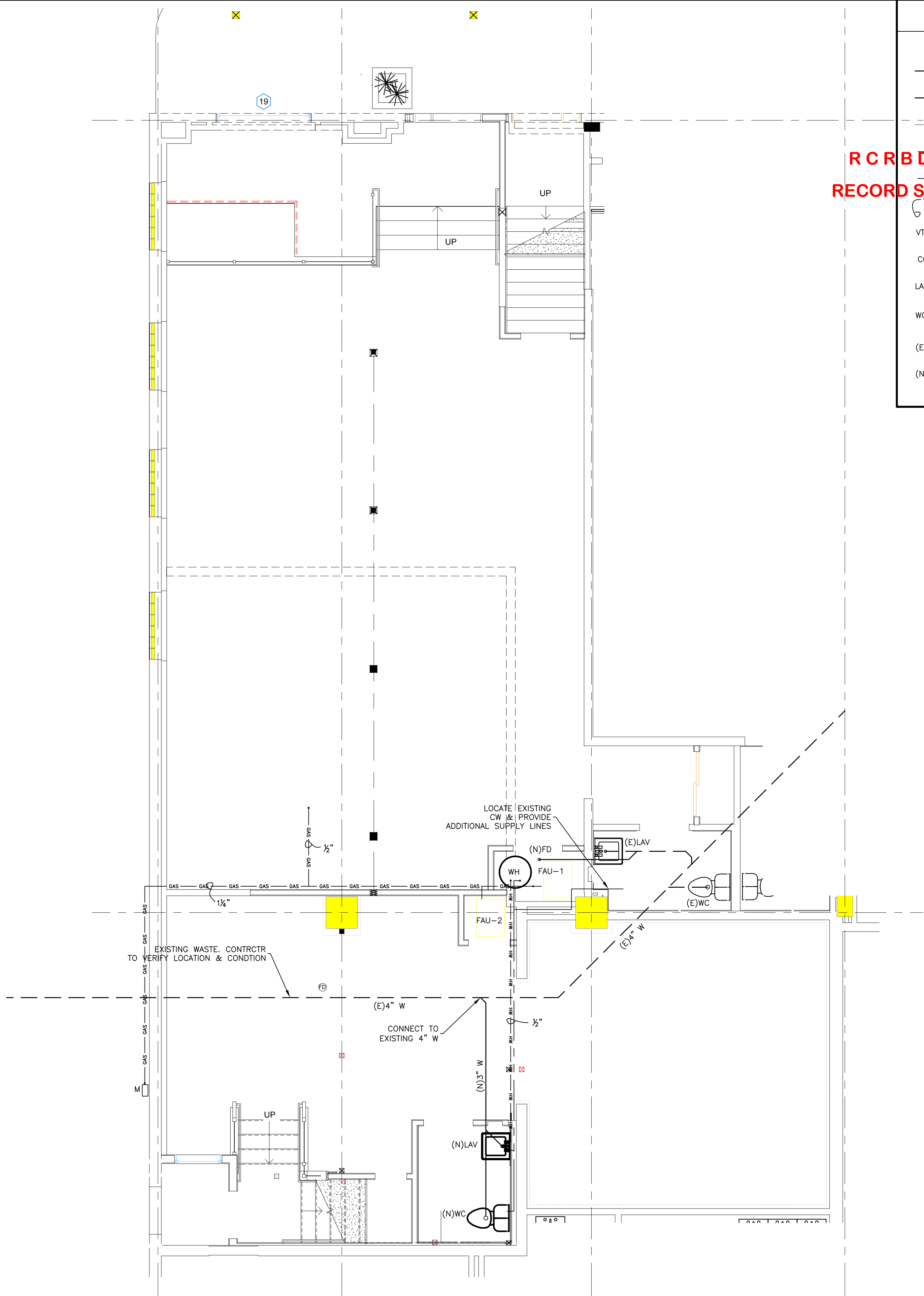
A. All suspended domestic pipe shall be suitable braced to prevent horizontal movement.

B. Prevent electrolysis in support of copper tubing by use of hangers and supports that are copper plated, or by other recognized industry methods or by plastic coated hangers.

**PLUMBING FIXTURES**

A. Provide factory fabricated fixtures of type, style and material indicated. Where more than one is indicated, selection is installer's option when approved by owner. All fixtures of the type specified on the mechanical plans, unless approved by the engineer and/or owner.

B. All fixtures, inlet and outlet shall have easy disconnects so interceptor may be move for ease of cleaning.

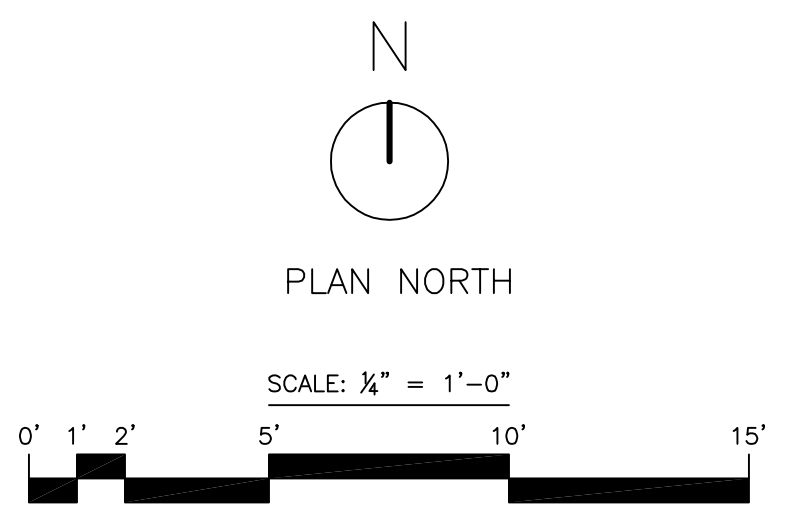


**PLUMBING LEGEND**

---	EXISTING SEWER PIPING
---	SEWER PIPING
---	VENT PIPING
---	DOMESTIC WATER PIPING
---	DOM HOT WATER PIPING
---	PIPE SIZES
VTR	VENT TO ROOF
CO	DRAIN CLEAN-OUT
LAV	LAVATORY
WC	WATER CLOSET
(E)	EXISTING
(N)	NEW

**R C R B D**  
**RECORD SET**

**MAIN LEVEL PLUMBING PLAN**  
 SCALE: 1/4" = 1'-0"



**YVE,**  
 YAMPA VALLEY ENGINEERING, INC.

**STRUCTURAL MECHANICAL ENGINEERING DESIGN DRAFTING SERVICES**

JAMES STEGMAIER, P.E.  
 1794 KAMAR PLAZA  
 P.O. BOX 772192  
 STEAMBOAT SPRINGS, CO 80477  
 970-870-9229  
 yvengr@yvengr.com

**Old West Building  
 Tenant Improvement**  
 1100 Lincoln Ave.  
 Steamboat Springs, Colorado

JOB NO: 17-044  
 DRAWN: JAS  
 DATE: 7-31-17

**REVISIONS**

NO.	DATE	DRAWN

SHEET NUMBER  
**P-1**

PLUMBING LEGEND

- EXISTING SEWER PIPING
- SEWER PIPING
- VENT PIPING
- DOMESTIC WATER PIPING
- HW — DOM HOT WATER PIPING
- PIPE SIZES
- VTR — VENT TO ROOF
- CO — DRAIN CLEAN-OUT
- LAV — LAVATORY
- WC — WATER CLOSET
- (E) — EXISTING
- (N) — NEW

**R C R B D**  
**RECORD SET**

**YVE,**  
YAMPA VALLEY ENGINEERING, INC.

STRUCTURAL  
MECHANICAL  
ENGINEERING  
DESIGN  
DRAFTING  
SERVICES

JAMES STEGMAIER, P.E.  
1794 KAMAR PLAZA  
P.O. BOX 772192  
STEAMBOAT SPRINGS, CO  
80477  
970-870-9229  
yvengr@yvengr.com

**Old West Building**  
**Tenant Improvement**  
1100 Lincoln Ave.  
Steamboat Springs, Colorado

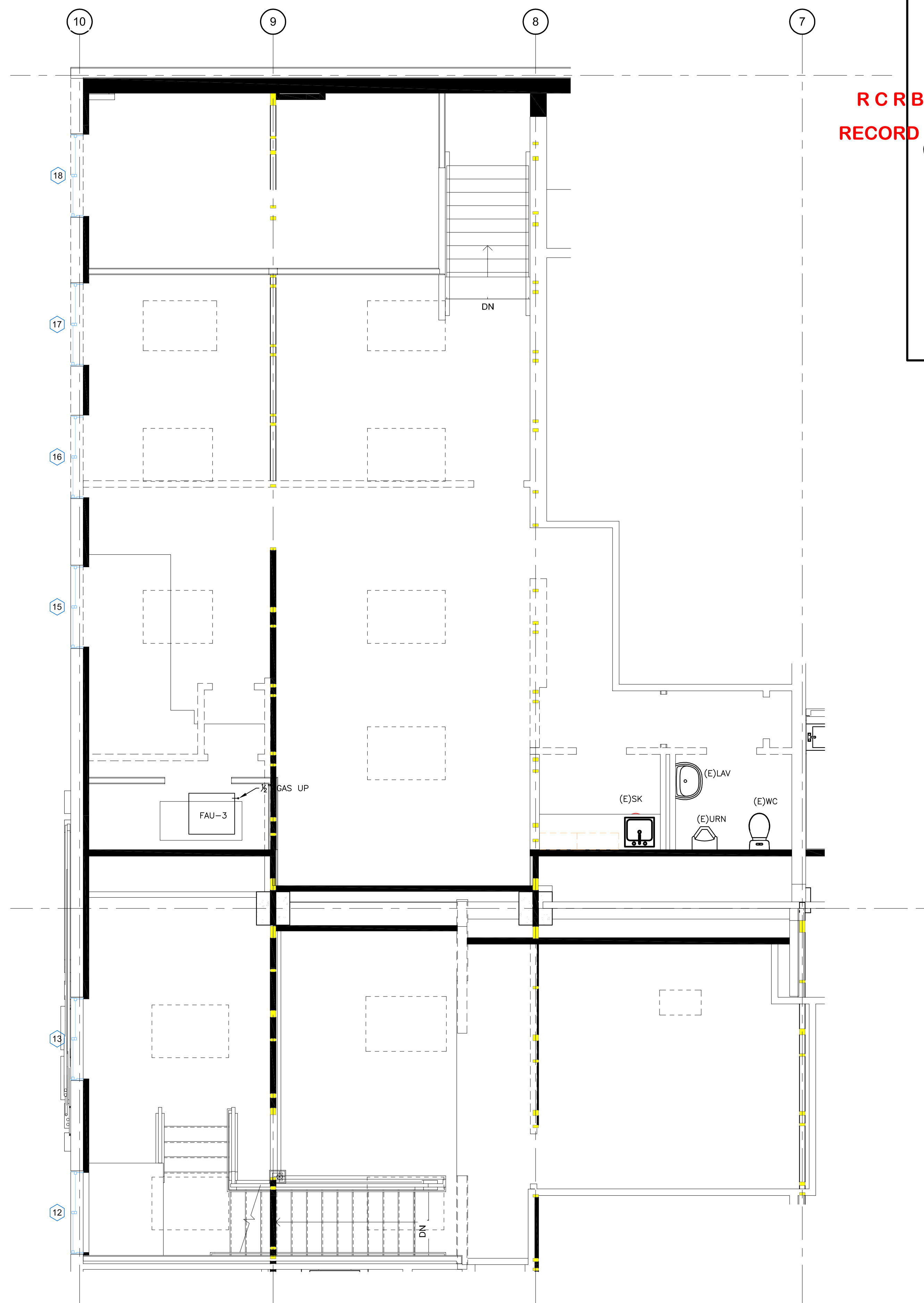
JOB NO: 17-044  
DRAWN: JAS  
DATE: 7-31-17

REVISIONS		
NO.	DATE	DRAWN

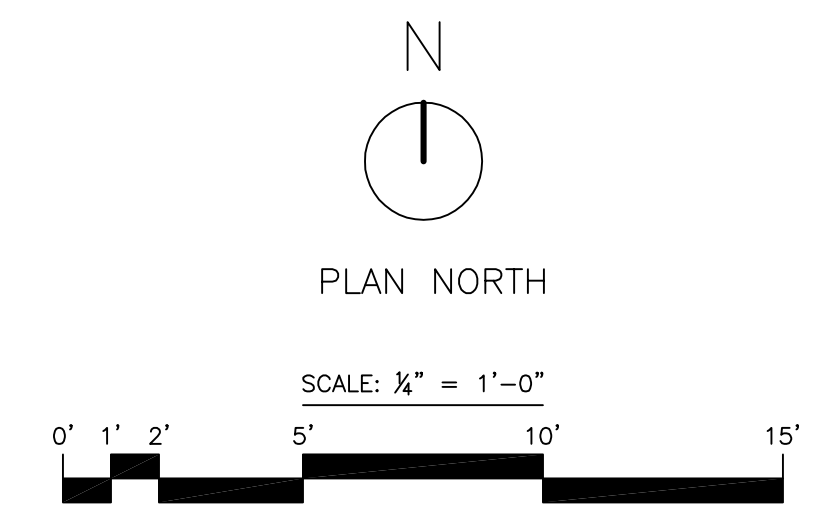
SHEET NUMBER  
**P-2**

PLUMBING EQUIPMENT SCHEDULE

MARK	DESCRIPTION	MANUFACTURE & MODEL	FAUCET & ACCESSORIES	FINISH	REMARKS
WC	WATER CLOSET	KOHLER HIGHLINE K-3519	-	WHITE	-
LAV	LAVATORY	KOHLER CHESAPEAKE K-1722	KOHLER CORALAIS 15592	WHITE CP	REQUIRES WALL CARRIER
WH	ELECT WATER HEATER	BRADFORD WHITE LE140L3-3 5000W	-	-	480 V 10.4A



— UPPER LEVEL PLUMBING PLAN  
SCALE: 1/4" = 1'-0"

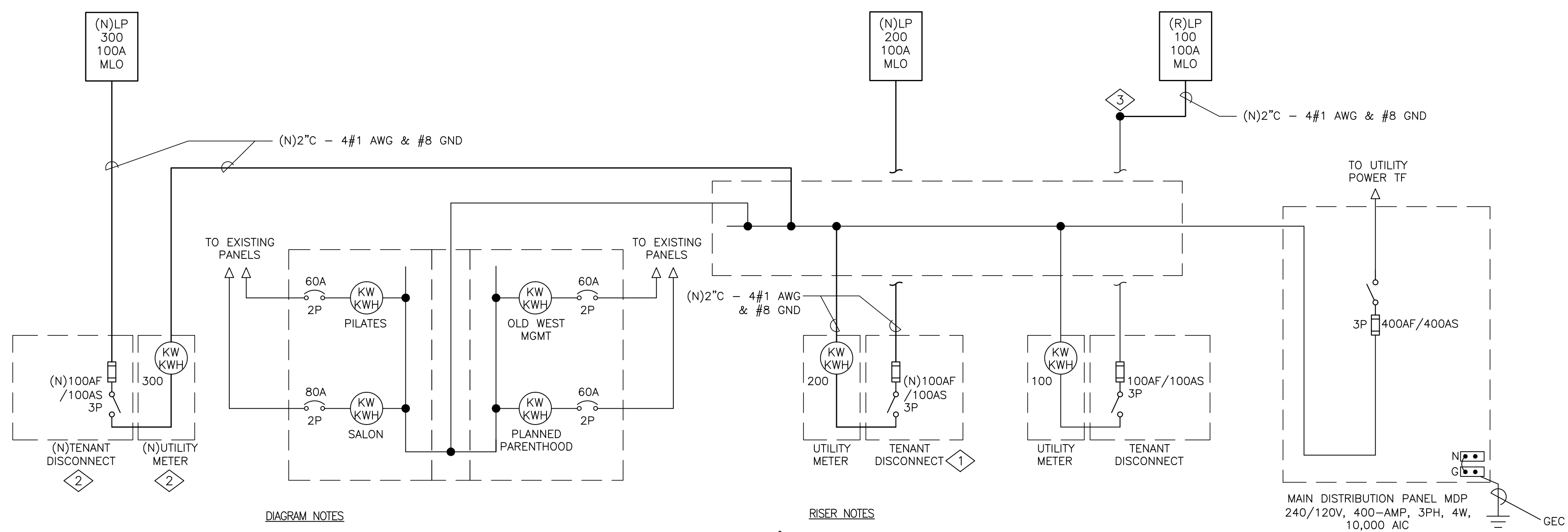


LIGHTING FIXTURE SCHEDULE									
SYMBOL	ITEM	TYPE	SIZE	LAMPS		FIXTURE VOLTAGE	INPUT WATTS	CATALOG NUMBER	ALTERNATE CATALOG NUMBER
				TYPE	COLOR				
	F1A	DIRECT/INDIRECT LINEAR SUSPENDED LED LUMINAIRE	8'	LED	3500	120	68.8	PINNACLE LIGHTING LC6A-75-935HO-8-DAC-1-0L1-1-0-GR	APPROVED EQUAL - CONTRACTOR TO SUBMIT ANY SUBSTITUTION TO DESIGN TEAM FOR APPROVAL
	F1B	DIRECT/INDIRECT LINEAR SUSPENDED LED LUMINAIRE	4'	LED	3500	120	34.4	PINNACLE LIGHTING LC6A-75-935HO-4-DAC-1-0L1-1-0-GR	APPROVED EQUAL - CONTRACTOR TO SUBMIT ANY SUBSTITUTION TO DESIGN TEAM FOR APPROVAL
	F1C	DIRECT/INDIRECT LINEAR SUSPENDED LED LUMINAIRE	12'	LED	3500	120	103.2	PINNACLE LIGHTING LC6A-75-935HO-12-DAC-1-0L1-1-0-GR	APPROVED EQUAL - CONTRACTOR TO SUBMIT ANY SUBSTITUTION TO DESIGN TEAM FOR APPROVAL
	F2	LED VANITY FIXTURE	23"	LED	3000	120	9	EUREKA LIGHTING 3540-23-LED.9.30-120-DV-CHR-WH	APPROVED EQUAL - CONTRACTOR TO SUBMIT ANY SUBSTITUTION TO DESIGN TEAM FOR APPROVAL
	F3	ROUND SURFACE MOUNT FIXTURE	2'	LED	3500	120	31	H.E. WILLIAMS LIGHTING RND5-2-L25/835-FXA-DIM-120	APPROVED EQUAL - CONTRACTOR TO SUBMIT ANY SUBSTITUTION TO DESIGN TEAM FOR APPROVAL
	F4	LED PENDANT FIXTURE	11.6"	LED	3500	120	36.5	DELRAY LIGHTING AL2387-S-0-W35	APPROVED EQUAL - CONTRACTOR TO SUBMIT ANY SUBSTITUTION TO DESIGN TEAM FOR APPROVAL
	F5A	LED SURFACE MOUNTED FIXTURE	4'	LED	3500	120	23	H.E. WILLIAMS LIGHTING 75R-4-L30/835-DRV-120	APPROVED EQUAL - CONTRACTOR TO SUBMIT ANY SUBSTITUTION TO DESIGN TEAM FOR APPROVAL
	F5B	LED SURFACE MOUNTED FIXTURE	2'	LED	3500	120	20	H.E. WILLIAMS LIGHTING 75R-2-L20/835-DRV-120	APPROVED EQUAL - CONTRACTOR TO SUBMIT ANY SUBSTITUTION TO DESIGN TEAM FOR APPROVAL
	F6	LED UNDER-CABINET FIXTURE	2'	LED	3500	120	14	H.E. WILLIAMS LIGHTING 15F-2-L12/835-DMA-DRV-120	APPROVED EQUAL - CONTRACTOR TO SUBMIT ANY SUBSTITUTION TO DESIGN TEAM FOR APPROVAL
	F7	LED SURFACE LINEAR FIXTURE	2'	LED	3500	120	23	H.E. WILLIAMS LIGHTING SLF-2-L26/835-HIA-DIM-120	APPROVED EQUAL - CONTRACTOR TO SUBMIT ANY SUBSTITUTION TO DESIGN TEAM FOR APPROVAL
	X1	LED EXIT SIGN	11" X 13"	LED	N/A	120	3.8	H.E. WILLIAMS LIGHTING EXIT/EL-SF-G-CP-AN-EM-SDT	APPROVED EQUAL - CONTRACTOR TO SUBMIT ANY SUBSTITUTION TO DESIGN TEAM FOR APPROVAL
	X2	LED EGRESS FIXTURE	14"	LED	N/A	120	1.8	H.E. WILLIAMS LIGHTING EMER/LED-WHT-HL-SDT	APPROVED EQUAL - CONTRACTOR TO SUBMIT ANY SUBSTITUTION TO DESIGN TEAM FOR APPROVAL

**SCHEDULE NOTES**

- ALL LAMPS SHALL BE PROVIDED BY THE CONTRACTOR.
- CONTRACTOR TO SUBMIT FIXTURE TYPES TO OWNER, ARCHITECT AND ENGINEER PRIOR TO PURCHASE AND INSTALLATION.

**1 FIXTURE SCHEDULE**  
NTS



**DIAGRAM NOTES**

- ALL WORK SHOWN IS EXISTING UNLESS OTHERWISE NOTED.
- BRING ANY DISCOVERED CODE VIOLATIONS TO THE OWNER'S ATTENTION.
- ALL WIRING SHOWN IS SIZED FOR COPPER CONDUCTORS, UON.
- REMOVE ALL CONDUCTORS, DEVICES AND CONDUIT RENDERED UNUSED IN THIS PROJECT.

**RISER NOTES**

- PROVIDE NEW FUSES IN EXISTING DISCONNECT SWITCH. VERIFY COMPATIBILITY IN THE FIELD AND REPLACE DISCONNECT IF NEEDED.
- LOCATION OF NEW METER AND DISCONNECT TO BE COORDINATED IN THE FIELD. PHYSICAL SPACE ON EXTERIOR WALL TO BE FIELD VERIFIED.
- INTERCEPT FEEDER TO PANEL '100' AND RELOCATE PANEL WITHIN SUITE A. SEE PLANS FOR MORE INFORMATION.

**2 SINGLE LINE DIAGRAM**  
NTS

ABBREVIATIONS		NOTES
A, AMP	AMPERE	
AIC	AMPERE INTERRUPTING CAPACITY	
AF	FRAME RATING IN AMPERES	
AS	SWITCH RATING IN AMPERES	
AT	TRIP RATING IN AMPERES	
AWG	AMERICAN WIRE GAUGE	
C	CONDUIT	
CKT	CIRCUIT	
(E)	EXISTING TO REMAIN	
EC	EMPTY CONDUIT	
ELEC	ELECTRICAL	
EMT	ELECTRO METALLIC TUBING	
FA	FIRE ALARM	
G, GND	GROUND	
HP	HORSEPOWER	
MECH	MECHANICAL	
MCB	MAIN CIRCUIT BREAKER	
(N)	NEW EQUIPMENT OR DEVICE	
NEC	NATIONAL ELECTRIC CODE	
NEMA	NATIONAL ELECTRICAL MANUFACTURER'S ASSOCIATION	
NO	NORMALLY OPEN	
NTS	NOT TO SCALE	
∅, PH	PHASE	
PNL	PANEL	
PVC	POLYVINYL CHLORIDE CONDUIT	
PWR	POWER	
RSC	RIGID STEEL CONDUIT	
TEL	TELEPHONE	
TYP	TYPICAL	
UON	UNLESS OTHERWISE NOTED	
V	VOLT	
VA	VOLT AMPERES	
W	WATT	
(X)	EXISTING TO BE DEMOLISHED	

GENERAL NOTES	
1. ALL WORK SHOWN IS NEW, UNLESS NOTED OTHERWISE.	
2. ALL WORK TO BE IN ACCORDANCE WITH NATIONAL ELECTRIC CODE, 2014 EDITION.	
3. SEAL ALL CONDUIT PENETRATIONS OF FLOORS AND FIRE RATED ASSEMBLIES TO MAINTAIN FIRE RATING.	
4. PROVIDE NEW TYPEWRITTEN DIRECTORIES REFLECTING WORK PERFORMED FOR ALL NEW PANELBOARDS IN THIS PROJECT.	
5. PLANS ARE PREPARED WITH REQUIRED BRANCH CIRCUITS INDICATED BY CIRCUIT NUMBERS. PROVIDE AND INSTALL ALL CONDUITS, CONDUCTORS, BOXES, MISCELLANEOUS FITTINGS, ETC. FOR A COMPLETE AND OPERABLE SYSTEM (HOMERUN SHOWN). BRANCH CIRCUIT INSTALLATION SHALL COMPLY WITH SPECIFICATIONS AND N.E.C.	
6. ALL NEUTRAL CONDUCTORS ON POWER BRANCH CIRCUITING ROUNDHOUSES TO BE #10 AWG UNLESS NOTED OTHERWISE.	

SYMBOLS	WIRING DEVICE SYMBOLS
	20A, 125V, DUPLEX RECEPTACLE OUTLET +18" UNLESS NOTED OTHERWISE
	SURFACE 20A, 125V, DUPLEX RECEPTACLE OUTLET +18" UNLESS NOTED OTHERWISE
	20A, 125V, DOUBLE DUPLEX RECEPTACLE OUTLET +18" UNLESS NOTED OTHERWISE
	SURFACE 20A, 125V, DOUBLE DUPLEX RECEPTACLE OUTLET +18" UNO
	SPECIAL PURPOSE RECEPTACLE OUTLET, +18" UNLESS NOTED OTHERWISE, NEMA CONFIGURATION AS NOTED ON PLANS
	SURFACE SPECIAL PURPOSE RECEPTACLE OUTLET, +18" UNLESS NOTED OTHERWISE, NEMA CONFIGURATION AS NOTED ON PLANS
	20A, 125V, DEDICATED DUPLEX RECEPTACLE OUTLET +18" UON
	DUPLEX OUTLET WITH GROUND FAULT INTERRUPTER
	CEILING MOUNTED 20A, 125V, DUPLEX RECEPTACLE OUTLET
	CEILING MOUNTED 20A, 125V, DOUBLE DUPLEX RECEPTACLE OUTLET
	FLOOR MOUNTED DUPLEX CONVENIENCE/TELECOM OUTLET WITH BLANK STAINLESS STEEL COVER. COORDINATE TYPE AND FINISH WITH ARCHITECT.
	SPST WALL SWITCH, LETTERS INDICATE THE NUMBER OF SWITCHES AND OUTLETS THEY CONTROL
	DIMMER SWITCH
	OCCUPANCY LIGHT CONTROL SWITCH; WALL MOUNTED

SYMBOLS	POWER SYMBOLS	NOTES
	MOTOR OUTLET	
	FUSED DISCONNECT SWITCH SWITCH XX/XX/XX = AMP SWITCH/POLES/AMP FUSE	
	HEAVY DUTY NON-FUSED DISCONNECT SWITCH SWITCH XX/XX = AMP SWITCH/POLES	
	COMBINATION MOTOR STARTER	
	MANUAL MOTOR STARTER WITH THERMAL OVERLOAD	
	STATIONARY - CIRCUIT BREAKER; RATING AS SHOWN ON PLANS	
	SWITCH AND FUSE; RATING AS SHOWN ON PLANS	
	SWITCH AND FUSE; RATING AS SHOWN ON PLANS	
	JUNCTION BOX	
	SURFACE MOUNTED PANELBOARD OR TERMINAL CABINET	

SYMBOLS	DESIGNATION SYMBOLS	NOTES
	FIXTURE DESIGNATION UPPER CASE LETTER INDICATES FIXTURE TYPE. LOWER CASE LETTER INDICATES SWITCH LEG NUMBER INDICATES CIRCUIT NUMBER (WHERE SHOWN).	
	LETTER INDICATES FIXTURES CONTROL (WHERE SHOWN)	
	NUMBER INDICATES CIRCUIT NUMBER (WHERE SHOWN)	

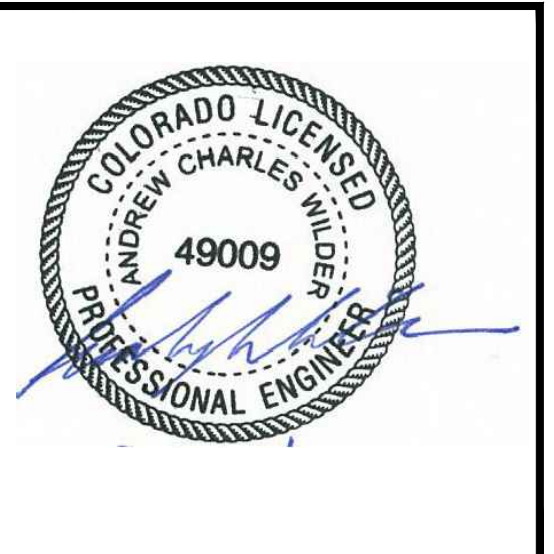
SHEET LIST	
E001	SYMBOL LIST AND SINGLE LINE DIAGRAM
E002	LOAD CALCULATIONS AND PANELBOARD SCHEDULES
E100	ELECTRICAL POWER & SIGNAL PLAN
E200	ELECTRICAL LIGHTING PLAN
E300	SPECIFICATIONS

**OLD WEST BLDG  
TENANT IMPRV**  
2500 Village Drive  
1100 Lincoln Ave.  
Steamboat Springs, CO 80477

**ESA Architecture  
and Planning**  
600 S. Lincoln Ave. #201  
Steamboat Springs, CO 80487

**R C R B D  
RECORD SET  
ELECTRICAL**

**WILDER ENGINEERING LLC**  
Andrew Wilder PE  
1170 Blue Sage Drive  
Steamboat Springs, CO 80487  
P: 970-819-7848  
E: andy@wilder-eng.com



Issue	By	Date & Issue Description	By
-	ISSUE FOR PERMIT	- 7.31.17	AW

Scale: NTS  
24x36  
Description: SYMBOLS, SCHEDULES AND ONE LINE DIAGRAMS

Project Name: OLD WEST  
Project Number: 201746

Sheet No.  
**E001**



**OLD WEST BLDG  
TENANT IMPRV**

2500 Village Drive  
1100 Lincoln Ave.  
Steamboat Springs, CO 80477

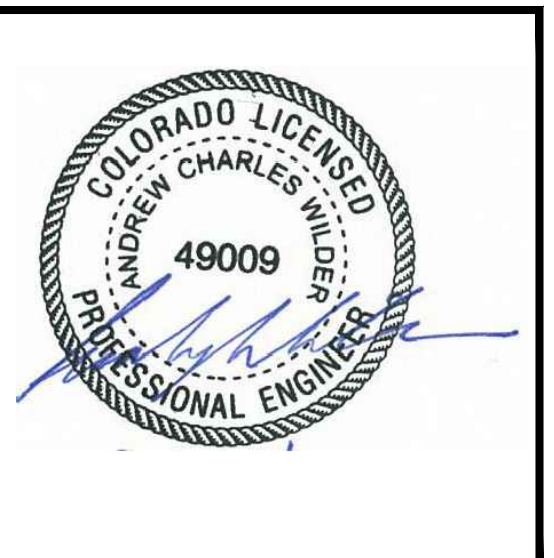
**ESA Architecture  
and Planning**

600 S. Lincoln Ave. #201  
Steamboat Springs, CO 80487

**R C R B D  
RECORD SET  
ELECTRICAL**



**WILDER ENGINEERING LLC**  
Andrew Wilder PE  
1170 Blue Sage Drive  
Steamboat Springs, CO 80487  
P: 970-819-7848  
E: andy@wilder-eng.com



Issue	By	Date & Issue Description	By
-	ISSUE FOR PERMIT	- 7.31.17	AW

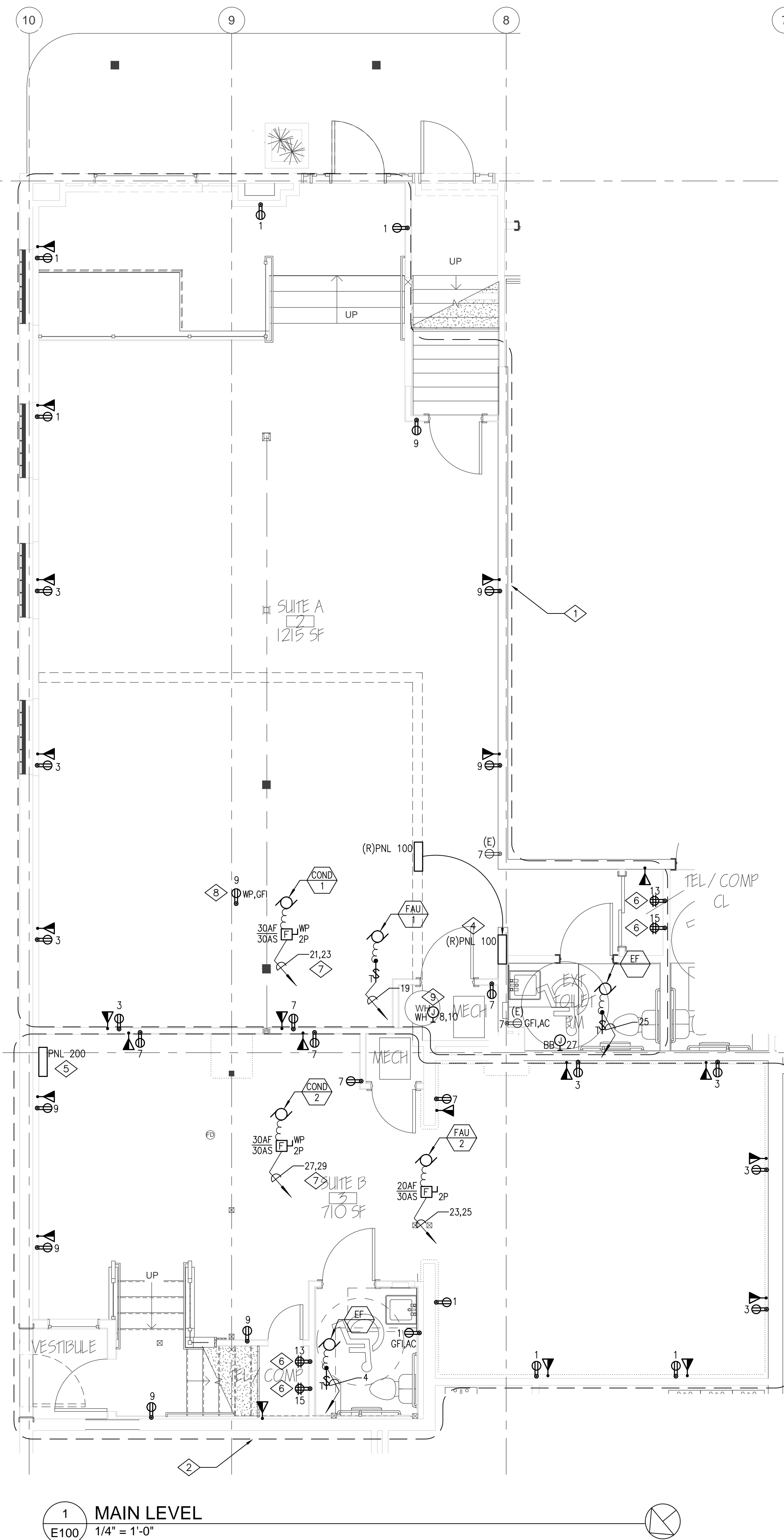
Scale:	1/4"=1'-0"
	24x36
Description:	ELECTRICAL POWER & SIGNAL PLAN
Project Name:	OLD WEST
Project Number:	201746
Sheet No.	<b>E100</b>

**GENERAL NOTES**

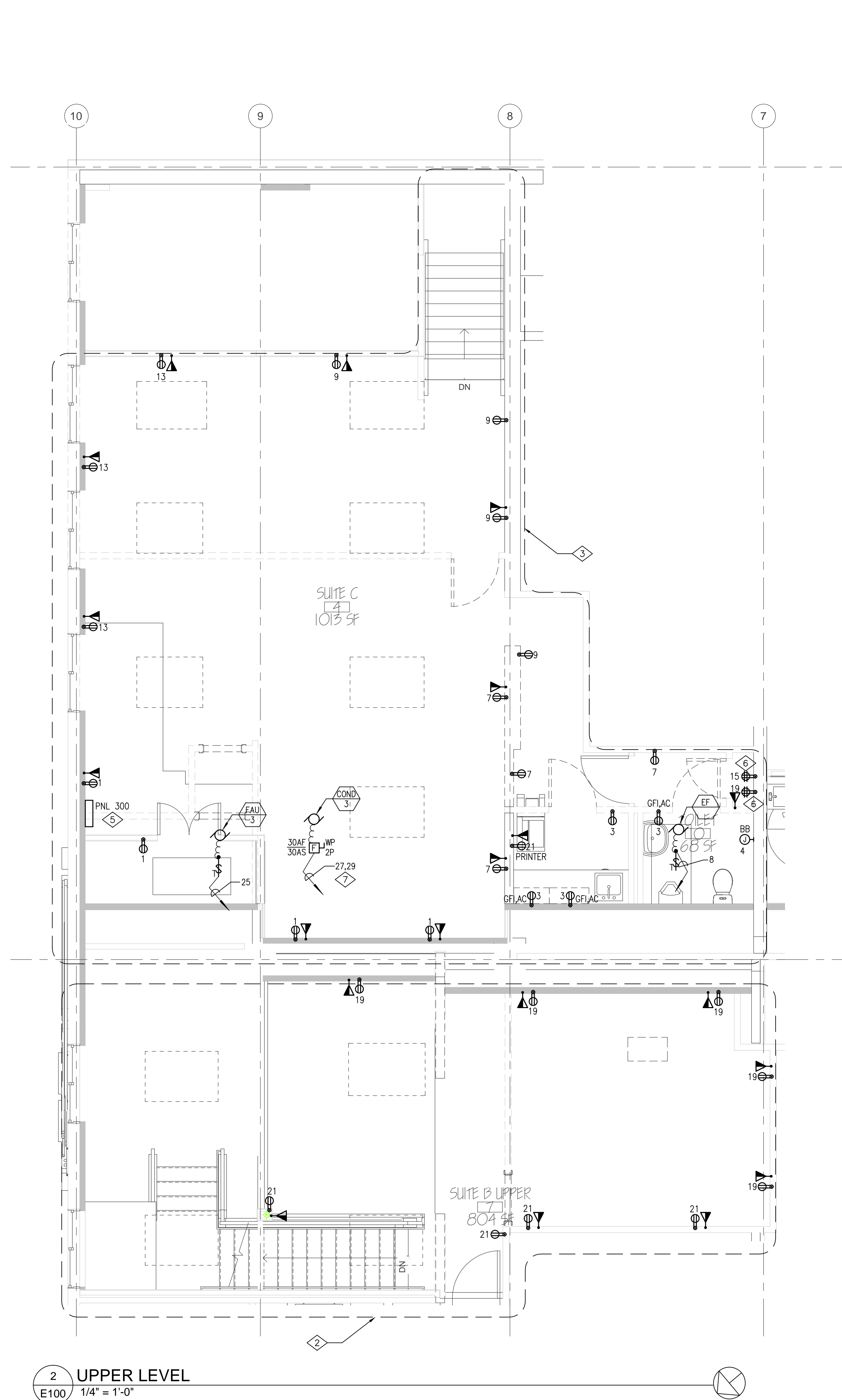
1. ALL POWER EQUIPMENT SHOWN IS NEW UNLESS OTHERWISE NOTED.
2. PROVIDE TYPEWRITTEN DIRECTORIES REFLECTING ALL NEW WORK PERFORMED IN THIS PROJECT.
3. ALL WIRE SHALL BE #12 AWG MIN., 90 DEG. "C" IN 1/2" - 2#12 AWG & #12 GND, UNLESS OTHERWISE NOTED.
4. VERIFY LOCATIONS OF ALL ELECTRICAL EQUIPMENT WITH ARCHITECTURAL DRAWINGS AND CONDITIONS IN THE FIELD.
5. PROVIDE RING AND STRING FOR TELE/DATA OUTLETS EXCEPT IN RATED WALLS. FOR OUTLETS IN RATED WALLS PROVIDE MINIMUM 1/2" STUB UPS TO ACCESSIBLE CEILING.
6. SEE DETAILS 3 & 4 ON SHEET E002 FOR TELECOM OUTLET INSTALLATION INFORMATION.

**SHEET NOTES**

1. ALL POWER AND SIGNAL DEVICES SHOWN IN THIS DEMARCATION ARE CIRCUITED TO PANEL '100', UON.
2. ALL POWER AND SIGNAL DEVICES SHOWN IN THIS DEMARCATION ARE CIRCUITED TO PANEL '200', UON.
3. ALL POWER AND SIGNAL DEVICES SHOWN IN THIS DEMARCATION ARE CIRCUITED TO PANEL '300', UON.
4. RELOCATE PANEL '100' TO LOCATION SHOWN. VERIFY ALL NEC REQUIRED WORKING CLEARANCES ARE MET IN THE FIELD.
5. VERIFY WITH ARCHITECT AND OWNER FOR FINAL LOCATION OF PANELBOARDS. VERIFY ALL NEC REQUIRED WORKING CLEARANCES ARE MET IN THE FIELD.
6. CONTRACTOR TO PROVIDE SURFACE MOUNTED DOUBLE DUPLEX OUTLETS AS SHOWN. VERIFY WITH FUTURE TENANT, IF POSSIBLE, POWER REQUIREMENTS DURING CONSTRUCTION. VERIFY LOCATION OF TELECOM CLOSET FOR TENANT '300' PRIOR TO INSTALLATION.
7. MECHANICAL UNIT IS LOCATED ON THE ROOF. PROVIDE WITH 1/2" - 2#10 AWG & #10 GND.
8. CONTRACTOR TO INSTALL A RECEPTACLE ON THE ROOF FOR MAINTENANCE.
9. PROVIDE WITH WATER HEATER WITH 1/2" - 2#10 AWG & #10 GND.



**1 MAIN LEVEL**  
E100 1/4" = 1'-0"



**2 UPPER LEVEL**  
E100 1/4" = 1'-0"

**OLD WEST BLDG  
TENANT IMPRV**

2500 Village Drive  
1100 Lincoln Ave.  
Steamboat Springs, CO 80477

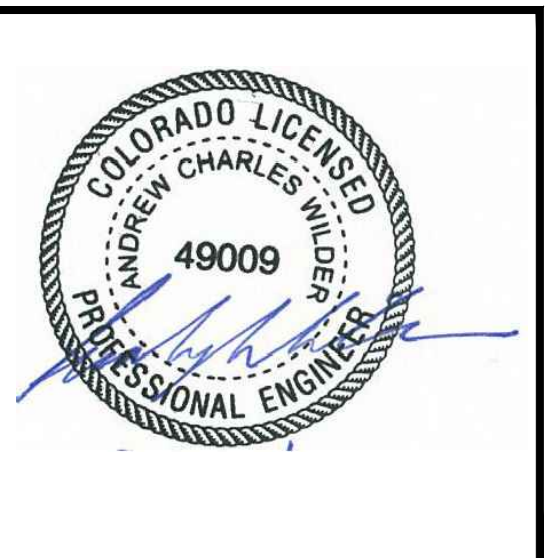
**ESA Architecture  
and Planning**

600 S. Lincoln Ave. #201  
Steamboat Springs, CO 80487

**R C R B D  
RECORD SET  
ELECTRICAL**

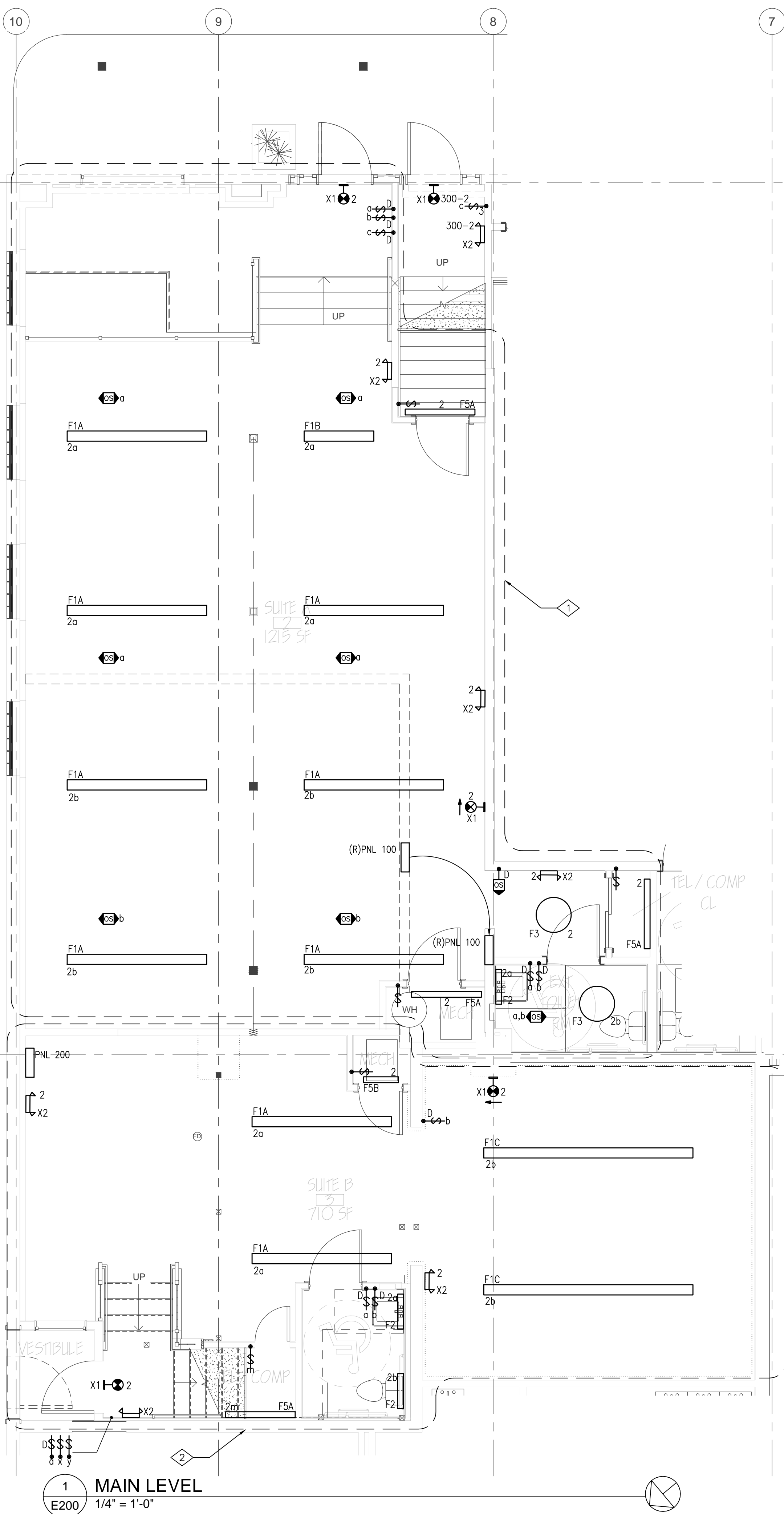
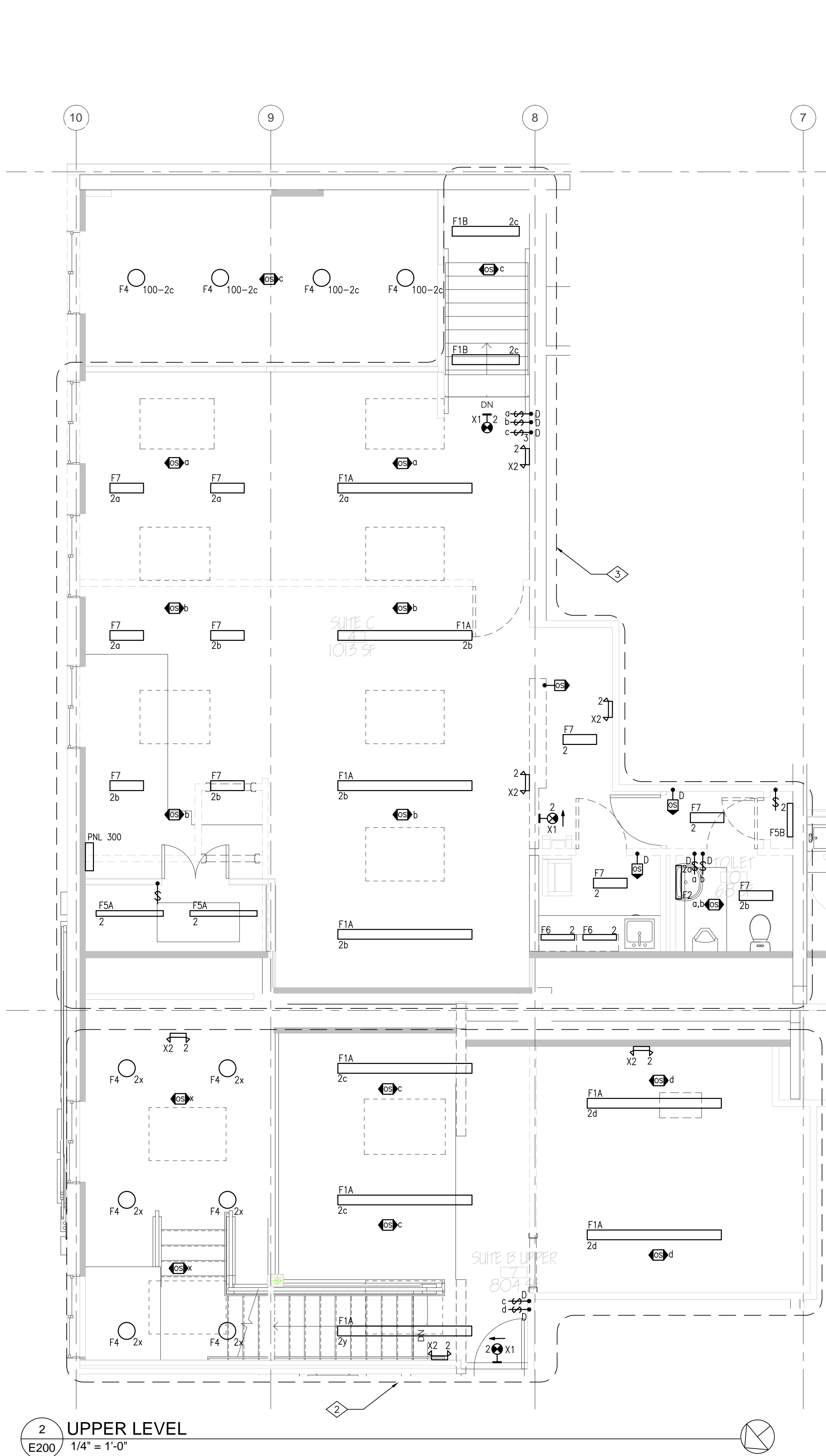


**WILDER ENGINEERING LLC**  
Andrew Wilder PE  
1170 Blue Sage Drive  
Steamboat Springs, CO 80487  
P: 970-819-7848  
E: andy@wilder-eng.com



Issue	By	Date & Issue Description	By
-	-	ISSUE FOR PERMIT - 7.31.17	AW

Scale:	1/4" = 1'-0"
	24x36
Description:	ELECTRICAL LIGHTING PLAN
Project Name:	OLD WEST
Project Number:	201746
Sheet No.	<b>E200</b>



- GENERAL NOTES**
1. ALL LIGHTING EQUIPMENT AND CONTROLS SHOWN ARE NEW, UNLESS OTHERWISE NOTED.
  2. CONFIRM LOCATIONS OF ALL LIGHT SWITCHES WITH THE ARCHITECT AND OWNER PRIOR TO INSTALLATION.
  2. PROVIDE TYPEWRITTEN DIRECTORIES REFLECTING ALL NEW WORK PERFORMED IN THIS PROJECT.
  3. ALL WIRE SHALL BE #12 AWG MIN., 90 DEG. °C IN 1/2" C - 2#12 AWG & #12 GND, UNLESS OTHERWISE NOTED.
  4. VERIFY LOCATIONS OF ALL ELECTRICAL EQUIPMENT WITH ARCHITECTURAL DRAWINGS AND CONDITIONS IN THE FIELD.
  7. ALL FIXTURES CIRCUITED WITH 'EM' ARE TO BE PROVIDED WITH AN INTERNAL BATTERY FOR EGRESS LIGHTING.
  8. PROVIDE POWER PACKS AS NEEDED FOR ALL OCCUPANCY SENSORS
  9. PROVIDE LABELING AT ALL LIGHT SWITCHES FOR LOAD SERVED.

- SHEET NOTES**
- 1 ALL LIGHTING AND CONTROL DEVICES SHOWN IN THIS DEMARCATION ARE CIRCUITED TO PANEL '100', UON.
  - 2 ALL LIGHTING AND CONTROL DEVICES SHOWN IN THIS DEMARCATION ARE CIRCUITED TO PANEL '200', UON.
  - 3 ALL LIGHTING AND CONTROL DEVICES SHOWN IN THIS DEMARCATION ARE CIRCUITED TO PANEL '300', UON.

**2 UPPER LEVEL**  
E200 1/4" = 1'-0"

**1 MAIN LEVEL**  
E200 1/4" = 1'-0"





