

LIGHTING FIXTURE SCHEDULE									
SYMBOL	ITEM	TYPE	SIZE	LAMPS		FIXTURE VOLTAGE	INPUT WATTS	CATALOG NUMBER	ALTERNATE CATALOG NUMBER
				TYPE	COLOR				
	F1A	DIRECT/INDIRECT LINEAR SUSPENDED LED LUMINAIRE	8'	LED	3500	120	68.8	PINNACLE LIGHTING LC6A-75-935HO-8-DAC-1-OL1-1-0-GR	APPROVED EQUAL - CONTRACTOR TO SUBMIT ANY SUBSTITUTION TO DESIGN TEAM FOR APPROVAL
	F1B	DIRECT/INDIRECT LINEAR SUSPENDED LED LUMINAIRE	4'	LED	3500	120	34.4	PINNACLE LIGHTING LC6A-75-935HO-4-DAC-1-OL1-1-0-GR	APPROVED EQUAL - CONTRACTOR TO SUBMIT ANY SUBSTITUTION TO DESIGN TEAM FOR APPROVAL
	F1C	DIRECT/INDIRECT LINEAR SUSPENDED LED LUMINAIRE	12'	LED	3500	120	103.2	PINNACLE LIGHTING LC6A-75-935HO-12-DAC-1-OL1-1-0-GR	APPROVED EQUAL - CONTRACTOR TO SUBMIT ANY SUBSTITUTION TO DESIGN TEAM FOR APPROVAL
	F2	LED VANITY FIXTURE	23"	LED	3000	120	9	EUREKA LIGHTING 3540-23-LED.9.30-120-DV-CHR-WH	APPROVED EQUAL - CONTRACTOR TO SUBMIT ANY SUBSTITUTION TO DESIGN TEAM FOR APPROVAL
	F3	ROUND SURFACE MOUNT FIXTURE	2'	LED	3500	120	31	H.E. WILLIAMS LIGHTING RND5-2-L25/835-FXA-DIM-120	APPROVED EQUAL - CONTRACTOR TO SUBMIT ANY SUBSTITUTION TO DESIGN TEAM FOR APPROVAL
	F4	LED PENDANT FIXTURE	11.6"	LED	3500	120	36.5	DELRAY LIGHTING AL2387-S-0-W35	APPROVED EQUAL - CONTRACTOR TO SUBMIT ANY SUBSTITUTION TO DESIGN TEAM FOR APPROVAL
	F5A	LED SURFACE MOUNTED FIXTURE	4'	LED	3500	120	23	H.E. WILLIAMS LIGHTING 75R-4-L30/835-DRV-120	APPROVED EQUAL - CONTRACTOR TO SUBMIT ANY SUBSTITUTION TO DESIGN TEAM FOR APPROVAL
	F5B	LED SURFACE MOUNTED FIXTURE	2'	LED	3500	120	20	H.E. WILLIAMS LIGHTING 75R-2-L20/835-DRV-120	APPROVED EQUAL - CONTRACTOR TO SUBMIT ANY SUBSTITUTION TO DESIGN TEAM FOR APPROVAL
	F6	LED UNDER-CABINET FIXTURE	2'	LED	3500	120	14	H.E. WILLIAMS LIGHTING 15F-2-L12/835-DMA-DRV-120	APPROVED EQUAL - CONTRACTOR TO SUBMIT ANY SUBSTITUTION TO DESIGN TEAM FOR APPROVAL
	F7	LED SURFACE LINEAR FIXTURE	2'	LED	3500	120	23	H.E. WILLIAMS LIGHTING SLF-2-L26/835-HIA-DIM-120	APPROVED EQUAL - CONTRACTOR TO SUBMIT ANY SUBSTITUTION TO DESIGN TEAM FOR APPROVAL
	X1	LED EXIT SIGN	11" X 13"	LED	N/A	120	3.8	H.E. WILLIAMS LIGHTING EXIT/EL-SF-G-CP-AN-EM-SDT	APPROVED EQUAL - CONTRACTOR TO SUBMIT ANY SUBSTITUTION TO DESIGN TEAM FOR APPROVAL
	X2	LED EGRESS FIXTURE	14"	LED	N/A	120	1.8	H.E. WILLIAMS LIGHTING EMER/LED-WHT-HL-SDT	APPROVED EQUAL - CONTRACTOR TO SUBMIT ANY SUBSTITUTION TO DESIGN TEAM FOR APPROVAL

SCHEDULE NOTES

- ALL LAMPS SHALL BE PROVIDED BY THE CONTRACTOR.
- CONTRACTOR TO SUBMIT FIXTURE TYPES TO OWNER, ARCHITECT AND ENGINEER PRIOR TO PURCHASE AND INSTALLATION.

1 FIXTURE SCHEDULE
NTS

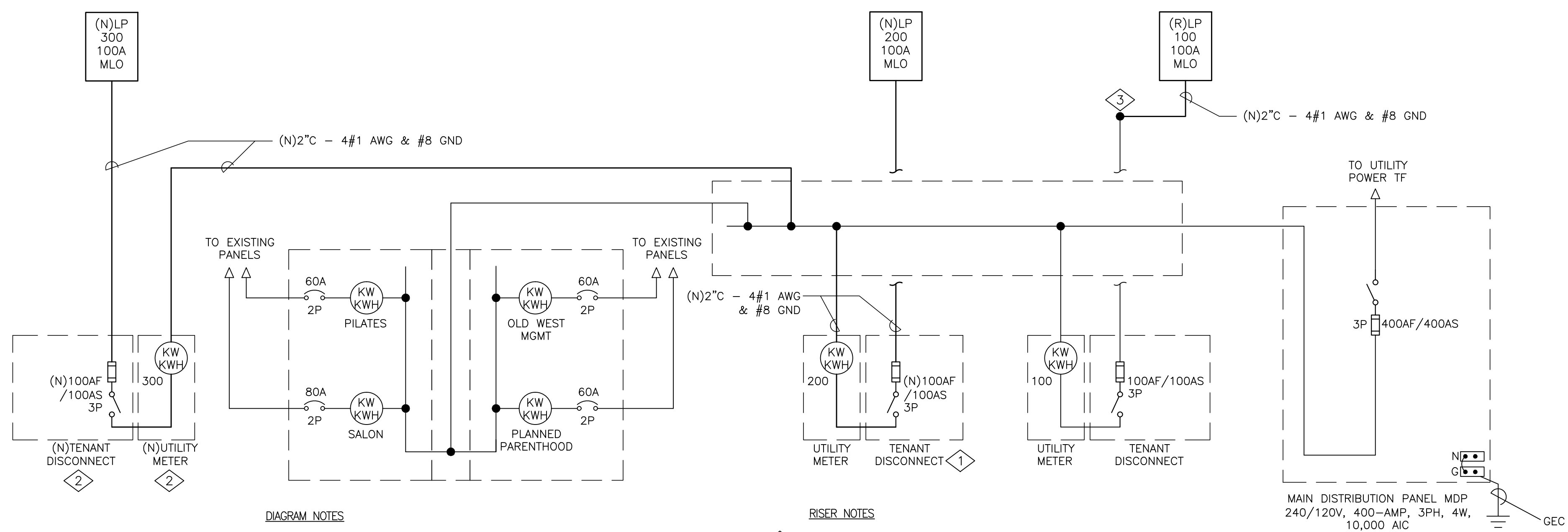


DIAGRAM NOTES

- ALL WORK SHOWN IS EXISTING UNLESS OTHERWISE NOTED.
- BRING ANY DISCOVERED CODE VIOLATIONS TO THE OWNER'S ATTENTION.
- ALL WIRING SHOWN IS SIZED FOR COPPER CONDUCTORS, UON.
- REMOVE ALL CONDUCTORS, DEVICES AND CONDUIT RENDERED UNUSED IN THIS PROJECT.

RISER NOTES

- PROVIDE NEW FUSES IN EXISTING DISCONNECT SWITCH. VERIFY COMPATIBILITY IN THE FIELD AND REPLACE DISCONNECT IF NEEDED.
- LOCATION OF NEW METER AND DISCONNECT TO BE COORDINATED IN THE FIELD. PHYSICAL SPACE ON EXTERIOR WALL TO BE FIELD VERIFIED.
- INTERCEPT FEEDER TO PANEL '100' AND RELOCATE PANEL WITHIN SUITE A. SEE PLANS FOR MORE INFORMATION.

2 SINGLE LINE DIAGRAM
NTS

ABBREVIATIONS		NOTES
A, AMP	AMPERE	
AIC	AMPERE INTERRUPTING CAPACITY	
AF	FRAME RATING IN AMPERES	
AS	SWITCH RATING IN AMPERES	
AT	TRIP RATING IN AMPERES	
AWG	AMERICAN WIRE GAUGE	
C	CONDUIT	
CKT	CIRCUIT	
(E)	EXISTING TO REMAIN	
EC	EMPTY CONDUIT	
ELEC	ELECTRICAL	
EMT	ELECTRO METALLIC TUBING	
FA	FIRE ALARM	
G, GND	GROUND	
HP	HORSEPOWER	
MECH	MECHANICAL	
MCB	MAIN CIRCUIT BREAKER	
(N)	NEW EQUIPMENT OR DEVICE	
NEC	NATIONAL ELECTRIC CODE	
NEMA	NATIONAL ELECTRICAL MANUFACTURER'S ASSOCIATION	
NO	NORMALLY OPEN	
NTS	NOT TO SCALE	
∅, PH	PHASE	
PNL	PANEL	
PVC	POLYVINYL CHLORIDE CONDUIT	
PWR	POWER	
RSC	RIGID STEEL CONDUIT	
TEL	TELEPHONE	
TYP	TYPICAL	
UON	UNLESS OTHERWISE NOTED	
V	VOLT	
VA	VOLT AMPERES	
W	WATT	
(X)	EXISTING TO BE DEMOLISHED	

GENERAL NOTES	
1. ALL WORK SHOWN IS NEW, UNLESS NOTED OTHERWISE.	
2. ALL WORK TO BE IN ACCORDANCE WITH NATIONAL ELECTRIC CODE, 2014 EDITION.	
3. SEAL ALL CONDUIT PENETRATIONS OF FLOORS AND FIRE RATED ASSEMBLIES TO MAINTAIN FIRE RATING.	
4. PROVIDE NEW TYPEWRITTEN DIRECTORIES REFLECTING WORK PERFORMED FOR ALL NEW PANELBOARDS IN THIS PROJECT.	
5. PLANS ARE PREPARED WITH REQUIRED BRANCH CIRCUITS INDICATED BY CIRCUIT NUMBERS. PROVIDE AND INSTALL ALL CONDUITS, CONDUCTORS, BOXES, MISCELLANEOUS FITTINGS, ETC. FOR A COMPLETE AND OPERABLE SYSTEM (HOMERUN SHOWN). BRANCH CIRCUIT INSTALLATION SHALL COMPLY WITH SPECIFICATIONS AND N.E.C.	
6. ALL NEUTRAL CONDUCTORS ON POWER BRANCH CIRCUITING ROUNDHOUSES TO BE #10 AWG UNLESS NOTED OTHERWISE.	

SYMBOLS	WIRING DEVICE SYMBOLS
	20A, 125V, DUPLEX RECEPTACLE OUTLET +18" UNLESS NOTED OTHERWISE
	SURFACE 20A, 125V, DUPLEX RECEPTACLE OUTLET +18" UNLESS NOTED OTHERWISE
	20A, 125V, DOUBLE DUPLEX RECEPTACLE OUTLET +18" UNLESS NOTED OTHERWISE
	SURFACE 20A, 125V, DOUBLE DUPLEX RECEPTACLE OUTLET +18" UNO
	SPECIAL PURPOSE RECEPTACLE OUTLET, +18" UNLESS NOTED OTHERWISE, NEMA CONFIGURATION AS NOTED ON PLANS
	SURFACE SPECIAL PURPOSE RECEPTACLE OUTLET, +18" UNLESS NOTED OTHERWISE, NEMA CONFIGURATION AS NOTED ON PLANS
	20A, 125V, DEDICATED DUPLEX RECEPTACLE OUTLET +18" UON
	DUPLEX OUTLET WITH GROUND FAULT INTERRUPTER
	CEILING MOUNTED 20A, 125V, DUPLEX RECEPTACLE OUTLET
	CEILING MOUNTED 20A, 125V, DOUBLE DUPLEX RECEPTACLE OUTLET
	FLOOR MOUNTED DUPLEX CONVENIENCE/TELECOM OUTLET WITH BLANK STAINLESS STEEL COVER. COORDINATE TYPE AND FINISH WITH ARCHITECT.
	SPST WALL SWITCH, LETTERS INDICATE THE NUMBER OF SWITCHES AND OUTLETS THEY CONTROL
	DIMMER SWITCH
	OCCUPANCY LIGHT CONTROL SWITCH; WALL MOUNTED

SYMBOLS	POWER SYMBOLS	NOTES
	MOTOR OUTLET	
	FUSED DISCONNECT SWITCH SWITCH xx/xx/xx = AMP SWITCH/POLES/AMP FUSE	
	HEAVY DUTY NON-FUSED DISCONNECT SWITCH SWITCH xx/xx = AMP SWITCH/POLES	
	COMBINATION MOTOR STARTER	
	MANUAL MOTOR STARTER WITH THERMAL OVERLOAD	
	STATIONARY - CIRCUIT BREAKER; RATING AS SHOWN ON PLANS	
	SWITCH AND FUSE; RATING AS SHOWN ON PLANS	
	SWITCH AND FUSE; RATING AS SHOWN ON PLANS	
	JUNCTION BOX	
	SURFACE MOUNTED PANELBOARD OR TERMINAL CABINET	

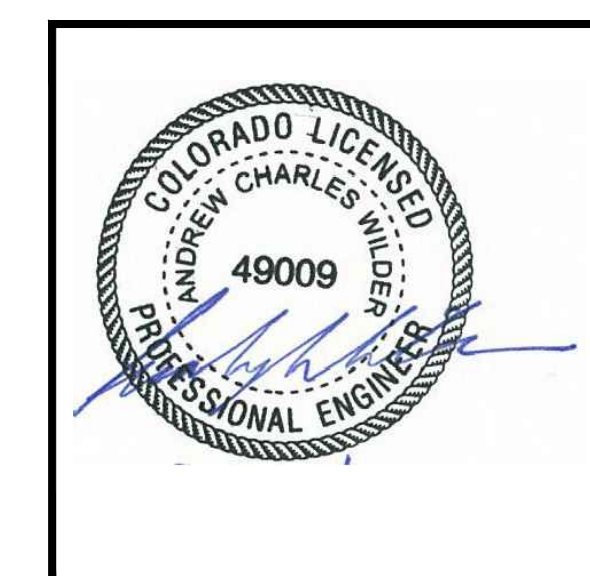
SYMBOLS	DESIGNATION SYMBOLS	NOTES
	FIXTURE DESIGNATION UPPER CASE LETTER INDICATES FIXTURE TYPE. LOWER CASE LETTER INDICATES SWITCH LEG NUMBER INDICATES CIRCUIT NUMBER (WHERE SHOWN).	
	LETTER INDICATES FIXTURES CONTROL (WHERE SHOWN)	
	NUMBER INDICATES CIRCUIT NUMBER (WHERE SHOWN)	

SHEET LIST	
E001	SYMBOL LIST AND SINGLE LINE DIAGRAM
E002	LOAD CALCULATIONS AND PANELBOARD SCHEDULES
E100	ELECTRICAL POWER & SIGNAL PLAN
E200	ELECTRICAL LIGHTING PLAN
E300	SPECIFICATIONS

**OLD WEST BLDG
TENANT IMPRV**
2500 Village Drive
1100 Lincoln Ave.
Steamboat Springs, CO 80477

**ESA Architecture
and Planning**
600 S. Lincoln Ave. #201
Steamboat Springs, CO 80487

WILDER ENGINEERING LLC
Andrew Wilder PE
1170 Blue Sage Drive
Steamboat Springs, CO 80487
P: 970-819-7848
E: andy@wilder-eng.com



Issue	By	Date & Issue Description	By
-	ISSUE FOR PERMIT	- 7.31.17	AW

Scale: NTS
24x36
Description: SYMBOLS, SCHEDULES AND ONE LINE DIAGRAMS

Project Name: OLD WEST
Project Number: 201746

Sheet No.
E001

**OLD WEST BLDG
TENANT IMPRV**

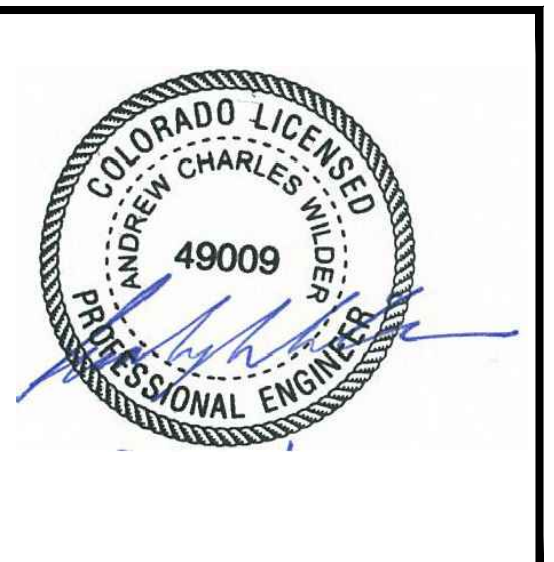
2500 Village Drive
1100 Lincoln Ave.
Steamboat Springs, CO 80477

**ESA Architecture
and Planning**

600 S. Lincoln Ave. #201
Steamboat Springs, CO 80487



WILDER ENGINEERING LLC
Andrew Wilder PE
1170 Blue Sage Drive
Steamboat Springs, CO 80487
P: 970-819-7848
E: andy@wilder-eng.com



Issue	By	Date & Issue Description	By
-	ISSUE FOR PERMIT	- 7.31.17	AW

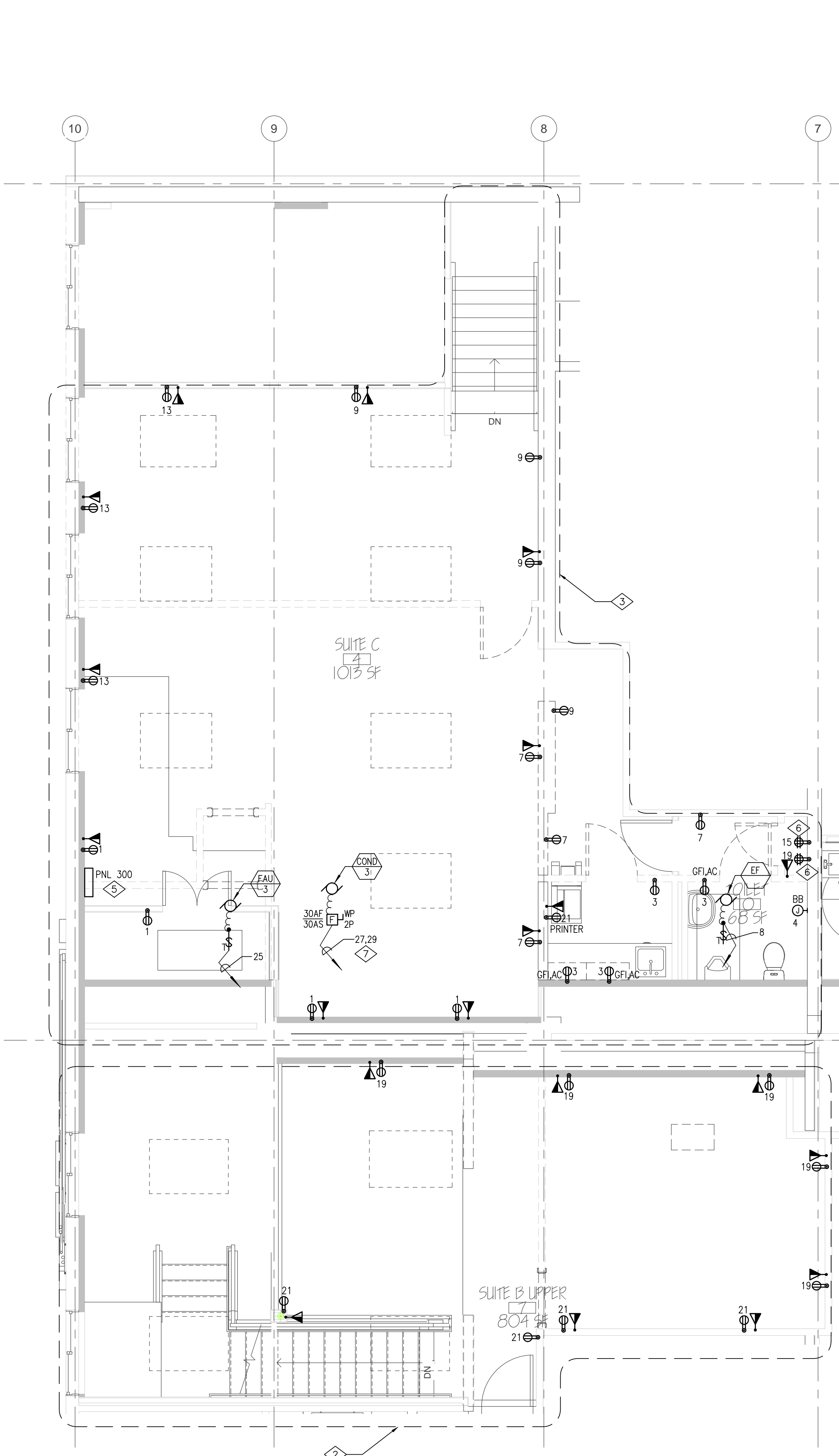
Scale:	1/4"=1'-0"
	24x36
Description:	ELECTRICAL POWER & SIGNAL PLAN
Project Name:	OLD WEST
Project Number:	201746
Sheet No.	E100

GENERAL NOTES

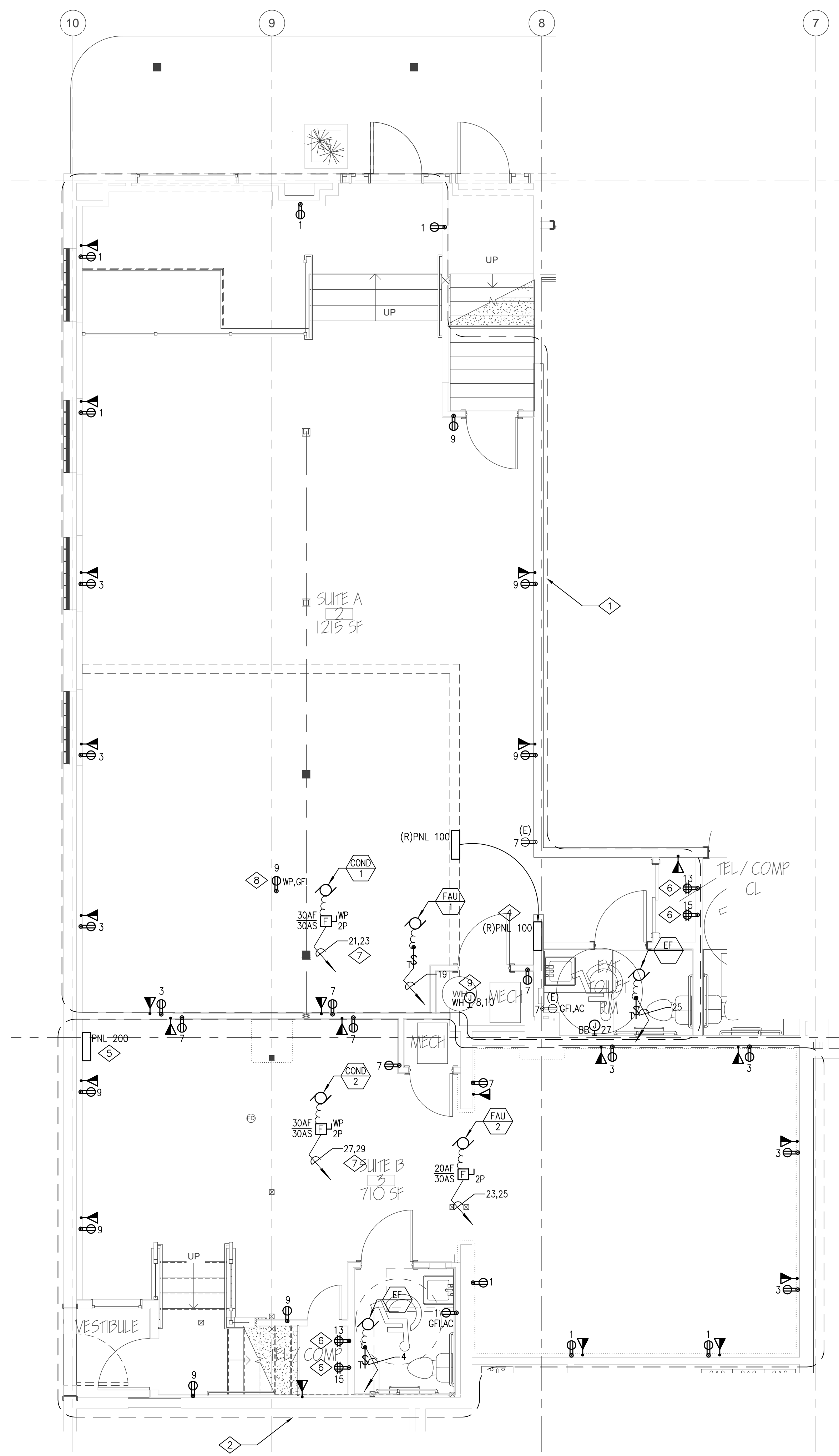
1. ALL POWER EQUIPMENT SHOWN IS NEW UNLESS OTHERWISE NOTED.
2. PROVIDE TYPEWRITTEN DIRECTORIES REFLECTING ALL NEW WORK PERFORMED IN THIS PROJECT.
3. ALL WIRE SHALL BE #12 AWG MIN., 90 DEG. "C" IN 1/2" C - 2#12 AWG & #12 GND, UNLESS OTHERWISE NOTED.
4. VERIFY LOCATIONS OF ALL ELECTRICAL EQUIPMENT WITH ARCHITECTURAL DRAWINGS AND CONDITIONS IN THE FIELD.
5. PROVIDE RING AND STRING FOR TELE/DATA OUTLETS EXCEPT IN RATED WALLS. FOR OUTLETS IN RATED WALLS PROVIDE MINIMUM 1/2" STUB UPS TO ACCESSIBLE CEILING.
6. SEE DETAILS 3 & 4 ON SHEET E002 FOR TELECOM OUTLET INSTALLATION INFORMATION.

SHEET NOTES

1. ALL POWER AND SIGNAL DEVICES SHOWN IN THIS DEMARCATION ARE CIRCUITED TO PANEL '100', UON.
2. ALL POWER AND SIGNAL DEVICES SHOWN IN THIS DEMARCATION ARE CIRCUITED TO PANEL '200', UON.
3. ALL POWER AND SIGNAL DEVICES SHOWN IN THIS DEMARCATION ARE CIRCUITED TO PANEL '300', UON.
4. RELOCATE PANEL '100' TO LOCATION SHOWN. VERIFY ALL NEC REQUIRED WORKING CLEARANCES ARE MET IN THE FIELD.
5. VERIFY WITH ARCHITECT AND OWNER FOR FINAL LOCATION OF PANELBOARDS. VERIFY ALL NEC REQUIRED WORKING CLEARANCES ARE MET IN THE FIELD.
6. CONTRACTOR TO PROVIDE SURFACE MOUNTED DOUBLE DUPLEX OUTLETS AS SHOWN. VERIFY WITH FUTURE TENANT, IF POSSIBLE, POWER REQUIREMENTS DURING CONSTRUCTION. VERIFY LOCATION OF TELECOM CLOSET FOR TENANT '300' PRIOR TO INSTALLATION.
7. MECHANICAL UNIT IS LOCATED ON THE ROOF. PROVIDE WITH 1/2" C - 2#10 AWG & #10 GND.
8. CONTRACTOR TO INSTALL A RECEPTACLE ON THE ROOF FOR MAINTENANCE.
9. PROVIDE WITH WATER HEATER WITH 1/2" C - 2#10 AWG & #10 GND.



2 UPPER LEVEL
E100 1/4" = 1'-0"



1 MAIN LEVEL
E100 1/4" = 1'-0"

**OLD WEST BLDG
TENANT IMPRV**

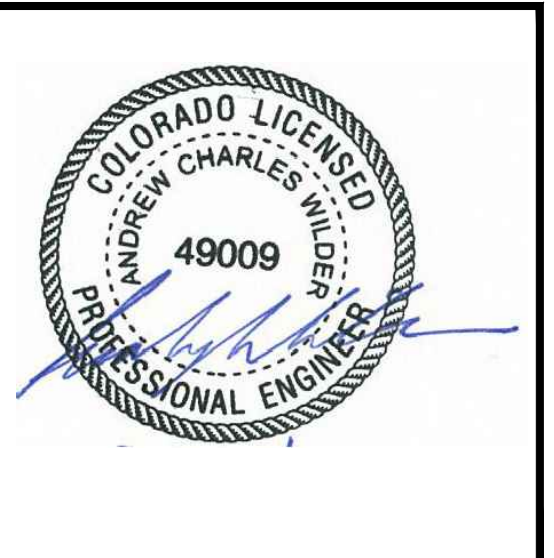
2500 Village Drive
1100 Lincoln Ave.
Steamboat Springs, CO 80477

**ESA Architecture
and Planning**

600 S. Lincoln Ave. #201
Steamboat Springs, CO 80487

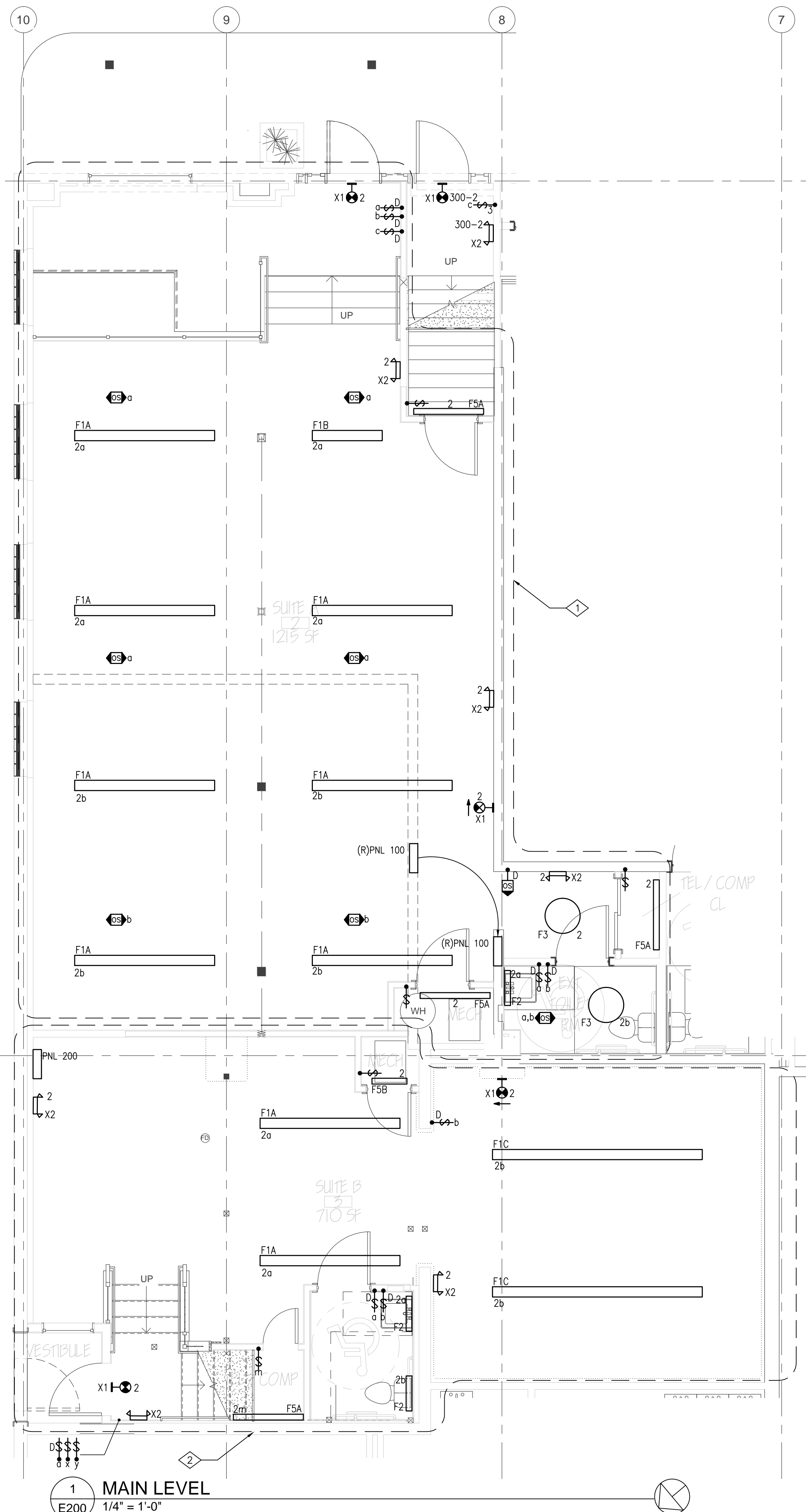
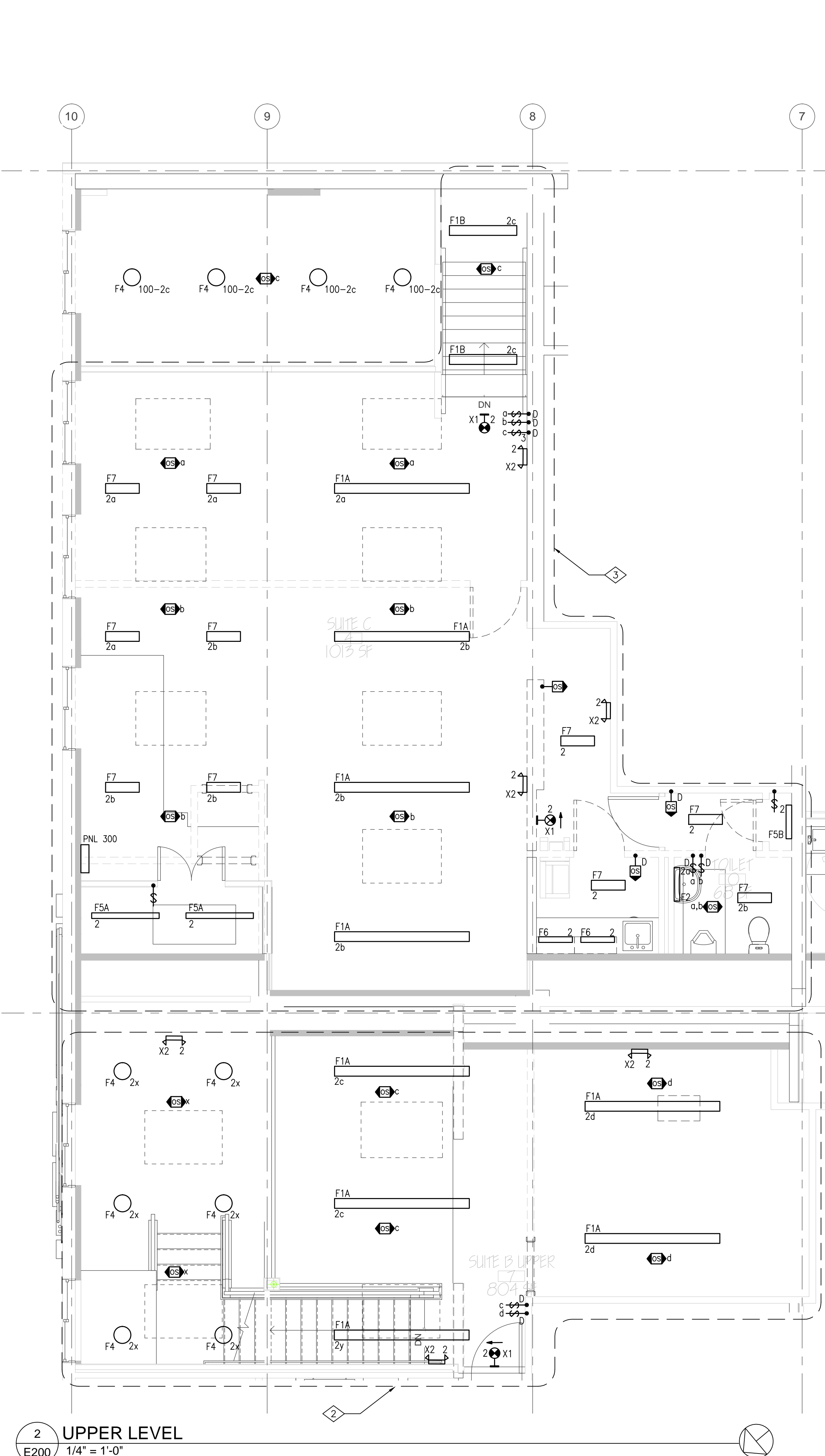


WILDER ENGINEERING LLC
Andrew Wilder PE
1170 Blue Sage Drive
Steamboat Springs, CO 80487
P: 970-819-7848
E: andy@wilder-eng.com



Issue	By	Date & Issue Description	By
-	ISSUE FOR PERMIT	- 7.31.17	AW

Scale:	1/4" = 1'-0"
	24x36
Description:	ELECTRICAL LIGHTING PLAN
Project Name:	OLD WEST
Project Number:	201746
Sheet No.	E200



- GENERAL NOTES**
1. ALL LIGHTING EQUIPMENT AND CONTROLS SHOWN ARE NEW, UNLESS OTHERWISE NOTED.
 2. CONFIRM LOCATIONS OF ALL LIGHT SWITCHES WITH THE ARCHITECT AND OWNER PRIOR TO INSTALLATION.
 2. PROVIDE TYPEWRITTEN DIRECTORIES REFLECTING ALL NEW WORK PERFORMED IN THIS PROJECT.
 3. ALL WIRE SHALL BE #12 AWG MIN., 90 DEG. °C IN 1/2" - 2#12 AWG & #12 GND, UNLESS OTHERWISE NOTED.
 4. VERIFY LOCATIONS OF ALL ELECTRICAL EQUIPMENT WITH ARCHITECTURAL DRAWINGS AND CONDITIONS IN THE FIELD.
 7. ALL FIXTURES CIRCUITED WITH 'EM' ARE TO BE PROVIDED WITH AN INTERNAL BATTERY FOR EGRESS LIGHTING.
 8. PROVIDE POWER PACKS AS NEEDED FOR ALL OCCUPANCY SENSORS
 9. PROVIDE LABELING AT ALL LIGHT SWITCHES FOR LOAD SERVED.

- SHEET NOTES**
- 1 ALL LIGHTING AND CONTROL DEVICES SHOWN IN THIS DEMARCATION ARE CIRCUITED TO PANEL '100', UON.
 - 2 ALL LIGHTING AND CONTROL DEVICES SHOWN IN THIS DEMARCATION ARE CIRCUITED TO PANEL '200', UON.
 - 3 ALL LIGHTING AND CONTROL DEVICES SHOWN IN THIS DEMARCATION ARE CIRCUITED TO PANEL '300', UON.

2 UPPER LEVEL
E200 1/4" = 1'-0"

1 MAIN LEVEL
E200 1/4" = 1'-0"

