

Nick Mentzer

From: Jeff Johnston <jeffj@theroofingco.com>
Sent: Wednesday, September 21, 2016 11:30 AM
To: Nick Mentzer
Subject: FW: The Steamboat Grand

PJ2159-1
Fire Prevention
In: 10/4/2016
Out: 10/04/2016

Please maintain emergency
access during construction
work.

From: Jeff Johnston [mailto:jeffj@theroofingco.com]
Sent: Friday, September 02, 2016 7:54 PM
To: richardk@theroofingco.com; Joe Ward <jward@theroofingco.com>; Kim Breukels <kbreukels@theroofingco.com>;
thendricks@theroofingco.com; psedlar@theroofingco.com
Subject: Fwd: The Steamboat Grand

Sent from my iPhone

Begin forwarded message:

Approval by Authorized Owner's Agent

From: "Paul Barry (SBT)" <PBarry@steamboat.com>
Date: September 2, 2016 at 7:36:05 PM MDT
To: Jeff Johnston <jeffj@theroofingco.com>
Subject: The Steamboat Grand

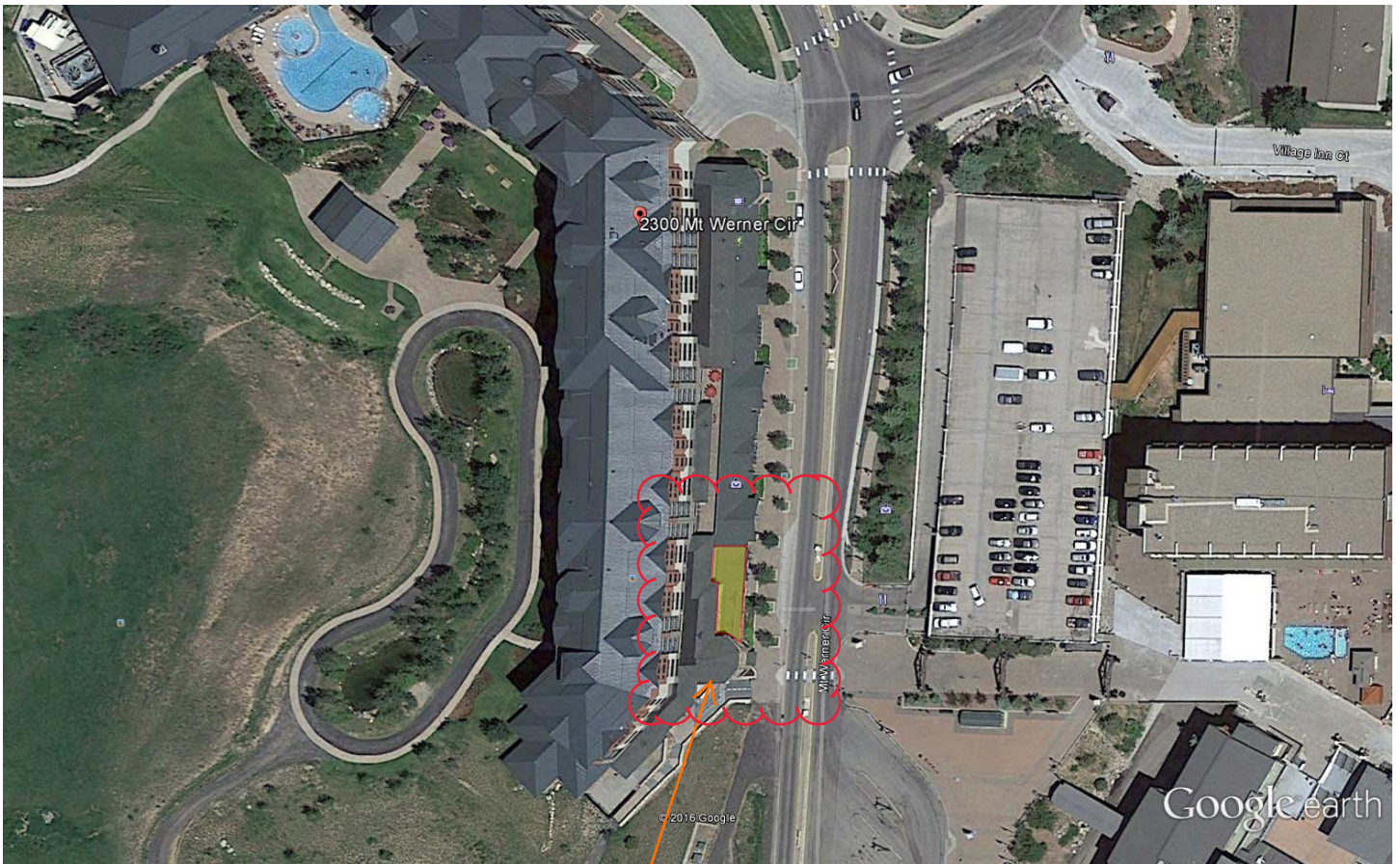
Jeff,

As we have previously discussed, you are hereby authorized to proceed this Fall with the roof repairs and snow retention system upgrades as proposed and discussed.

Let me know if you have any questions.

Paul Barry
The Steamboat Grand

RCRBD
RECORD SET



Google earth

feet
meters | 100 500



SMALL LOWER REROOF
AREA - STORE FRONT
(AS HIGHLIGHTED)

R C R B D
RECORD SET

SHINGLE COLOR SELECTION

R C R B D
RECORD SET

TruDefinition®
DURATION® SHINGLES
with SureNail® Technology
Bold contrast. Deep dimension. TruDefinition®.

TruDefinition® Duration® Shingles are specially formulated to provide great contrast and dimension to any roof. Through the use of multiple granule colors and shadowing, TruDefinition Duration Shingles offer a truly unique and dramatic effect. This exclusive combination of color and depth is what makes TruDefinition Duration Shingles like no other.

TruDefinition Duration Shingles are available in popular colors with bold, lively contrast and complementing shadow lines for greater dimension. They feature a Limited Lifetime Warranty*** (for as long as you own your home), 130-MPH Wind Resistance Limited Warranty** and an Algae Resistance Limited Warranty*. Beyond the outstanding curb appeal and impressive warranty coverage, they also come with the advanced performance of patented SureNail® Technology.

The SureNail® Difference—
A technological breakthrough in roofing. The innovative features of Owens Corning® TruDefinition® Duration® Shingles with patented SureNail® Technology offer the following:

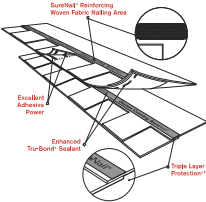
Breakthrough Design. Featuring a tough, woven engineered reinforcing fabric to deliver consistent fastening during installation.

Triple Layer Protection. A unique "triple layer" of reinforcement occurs when the fabric overlays the common bond of the shingle laminate layers that offers excellent fastener holding power.

Superior Adhesion. Our enhanced Tru-Bond™ sealant grips tightly to the engineered fabric nailing strip on the shingle below.

Excellent Adhesive Pockets. Specially formulated, wide adhesive bands help keep shingle layers laminated together.

Exceptional Wind Resistance. Engineered to deliver 130-MPH** wind warranty performance with only 4 nails. Fewer nails required can mean fewer deck penetrations.



COLORS AVAILABLE IN ALL SERVICE AREAS—see map below

Desert Tan†

Brownwood†

Teak†

Driftwood†

Estate Gray†

Amber†
Not available in Service Area 13.

Antique Silver†
Not available in Service Areas 12,13.

Terra Cotta†
Not available in Service Area 13.

Quarry Gray†

Sierra Gray†

Shasta White†

Harbor Blue†

Chateau Green†

Oyster Shell†
Not available in Service Areas 12,13.

COLOR AVAILABILITY MAP

The map shows the United States with two specific regions highlighted in red and labeled with numbers: '13' in the western United States (covering California, Oregon, and Washington) and '12' in the central United States (covering parts of Idaho, Montana, Wyoming, and Nebraska).

FLASHING COLOR SELECTION

ENVIRONMENTALLY SMART COLORS - DESIGN

R C R B D
RECORD SET



TERRA COTTA



AGED COPPER



SOLAR WHITE



SANDSTONE



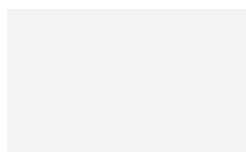
SIERRA TAN



COLONIAL RED



PATINA GREEN



REGAL WHITE



ASH GRAY



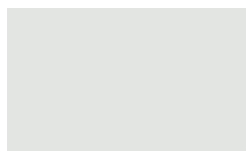
MEDIUM BRONZE



*REGAL RED



*HEMLOCK GREEN



*STONE WHITE



SLATE GRAY



MANSARD BROWN



*BURGUNDY



*HARTFORD GREEN



SLATE BLUE



CHARCOAL GRAY



DARK BRONZE



MATTE BLACK



EVERGREEN



*REGAL BLUE



*TEAL

METALLIC COLORS



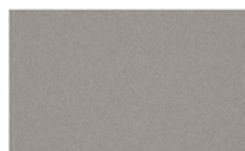
*SILVER



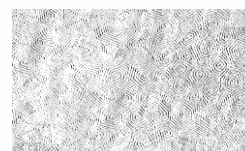
*COPPER



*CHAMPAGNE



*PRE-WEATHERED
GALVALUME[®]



ACRYLIC COATED
GALVALUME[®]

WEATHERED METAL COLORS



*GALV-TEN[™] RAW



*COPPER-TEN[™] RAW



*COR-TEN AZP[®] RAW



**Sheffield Metals
International**

CLEVELAND: 800.283.5262
ATLANTA: 800.929.9359
DALLAS: 877.853.4904
DENVER: 877.375.1477
www.WhyItsCooler.com

*Available at a slight price premium.
Colors shown are matched as accurately as possible, but may vary slightly from finished product. These rich and vibrant colors are produced with either Kynar 500[®] or Hylar 5000[®] resins, which provide superior color retention, and allow us to offer non-prorated coating warranties for most applications. Coating warranty varies for Regal Red, Matte Black, Copper, Silver, Champagne, and Pre-Weathered Galvalume. Metallics are warranted for chip, crack, and peel only. Please contact your representative for more information.

*Also available in Robust.



STOCK AVAILABILITY MATRIX							GALVALUME			ALUMINUM			
							24 ga.	24 ga.	24 ga.	.032 nom.	.032 nom.	.040 nom.	.050 nom.
							40.375"	44.375"	48.375"	40.500"	48.000"	48.000"	48.000"
	★	L	ISR	EMI	3yr.	SRI							
Aged Copper	★	L	0.47	0.85	0.46	53	●		●				
Ash Gray	★	L	0.39	0.84	0.39	41	●		●				
Burgundy	★		0.25	0.85	0.23	23	●		●				
Champagne Metallic	★	L	0.37	0.80	0.35	37	●		●				
Charcoal Gray	★		0.29	0.84	0.28	28	●		●				
Colonial Red	★	L	0.30	0.85	0.29	30	●	●	●	●	●	●	
Copper Metallic	★	L	0.49	0.86	0.47	56	●		●	●			
Dark Bronze	★		0.26	0.84	0.25	24	●	●	●	●	●	●	●
Evergreen	★		0.27	0.86	0.26	26	●	●	●	●	●	●	
Hartford Green	★		0.26	0.85	0.25	24	●		●		●	●	
Hemlock Green	★	L	0.29	0.86	0.29	29	●		●				
Mansard Brown	★		0.27	0.86	0.25	26	●		●		●	●	
Matte Black	★		0.29	0.83	0.27	27	●		●		●		
Medium Bronze	★	L	0.30	0.87	0.28	31	●	●	●	●	●	●	●
Patina Green	★		0.28	0.87	0.28	28	●		●				
Pre-weathered Galvalume®	★		0.30	0.79	0.28	27	●		●				
Regal Blue	★		0.26	0.85	0.25	24	●		●				
Regal Red	★	L	0.42	0.83	0.41	45	●		●				
Regal White	★	L	0.67	0.86	0.67	81	●	●	●	●	●	●	●
Sandstone	★	L	0.54	0.86	0.53	63	●	●	●	●	●	●	●
Sierra Tan	★	L	0.35	0.86	0.34	37	●	●	●	●	●	●	●
Silver Metallic	★	L	0.59	0.79	0.60	67	●		●	●		●	●
Slate Blue	★		0.29	0.85	0.28	28	●		●				
Slate Gray	★	L	0.33	0.84	0.33	33	●	●	●	●	●	●	●
Solar White	★	L	0.68	0.85	0.66	82	●		●	●	●	●	●
Stone White	★	L	0.60	0.86	0.56	71	●		●			●	
Teal	★		0.25	0.86	0.25	24	●		●				
Terra Cotta	★	L	0.35	0.86	0.35	37	●		●	●	●	●	
Acrylic Coated Galvalume®	★	L	0.67	0.14	0.55	56	●		●				
Cor-Ten AZP® Raw			0.32	0.89	N/A	34			●				
Copper-Ten™ Raw			0.45	0.88	N/A	51			●				
Galv-Ten™ Raw			0.49	0.84	N/A	55			●				
Bonderized/Paint Grip													
Custom Colors							▲	▲	▲	▲	▲	▲	▲

NOTES

- All of Sheffield's CoolR metal is painted with a .20 mil primer and .70 -.90 mil Top Coat of 70% Kynar 500 or Hylar 5000. The reverse side has a .20 primer and .30 - .40 backer coating.
- 22 gauge steel available in 44.375" and 48.375" widths upon request.
- .050 aluminum available in 48.000" width upon request.
- For low slope roofing to meet Energy Star requirements the ISR must be ≥ 0.65 . After 3 years, the solar reflectance must be ≥ 0.50 .
- For steep slope roofing to meet Energy Star requirements the ISR must be ≥ 0.25 . After 3 years, the solar reflectance must be ≥ 0.15 .
- For low slope roofing to meet LEED 2009 requirements the SRI must be ≥ 78 .
- For steep slope roofing to meet LEED 2009 requirements the SRI for 100% of the roof must be ≥ 29 .
- Low slope is defined as $\leq 2:12$.
- Steep slope is defined as $>2:12$.

KEY

●	Stocked Item
▲	Available on Custom Order Basis
★	Energy Star Compliant
L	LEED 2009 Compliant
ISR	Initial Solar Reflectance
EMI	Emissivity
SRI	Solar Reflectance Index

Oil canning is an aesthetic issue and is an inherent part of light gauge cold formed metal products. By using coil that has been processed properly, designing for thermal movement, following stringent specifications for installation and proper handling most oil canning can be eliminated. Oil canning is not grounds for coil/panel rejection.

Galvalume® is a registered trademark of BIEC. Hylar 5000® is a registered trademark of Solvay Solexis, Inc. Kynar 500® is a registered trademark of Atofina, Inc.

UNDERLAYMENT (ICE AND WATER SHIELD)



WeatherLock® Flex

Flexible Self-Sealing Ice & Water Barrier



WeatherLock® Flex Ice and Water Barrier is a component of the Owens Corning™ Total Protection Roofing System.™^

R C R B D RECORD SET

WeatherLock® Flex Flexible Self-Sealing Ice & Water Barrier The high-performance solution for specialty applications.

WeatherLock® Flex *Flexible* Self-Sealing Ice & Water Barrier provides excellent protection against water infiltration resulting from freeze/thaw cycling, wind-driven rains and normal water flow around eaves, rakes, valleys, vents, chimneys and skylights.

- **High performance**—flexible and pliable poly surface and modified asphalt combine to adhere around irregular shapes, inside corners and sharp angles, even in cold-weather applications to 40°F
- **Added Protection**—acts as a waterproof barrier in the most vulnerable sections of the roof, like valleys and other roof penetrations, to create a second line of defense. For optimal protection, apply to entire roof deck on 2:12 to 4:12 pitch roofs*
- **Aggressive self-adhesive**—exceeds adhesion requirements to help prevent water migration
- **Slip-resistant surface**—for excellent traction and safe installation
- **Seals tight around nails**—modified asphalt construction for a tight seal around nails to help prevent water penetration
- **Contractor convenience**—UV exposure up to 30 days without edge curling while continuing to provide high-performance lap seal. Split backer sheet for easy application*
- **Easy for re-roofing**—can be applied over existing single-layer ice and water barriers so re-roofing is easy and less costly



WeatherLock® Flex
Flexible Self-Sealing Ice & Water Barrier

It even beats the leading brand.

It's time to switch to an excellent cold-weather performance and better slip resistance of *WeatherLock Flex Flexible* Self-Sealing Ice & Water Barrier.

	Test Methods	WeatherLock® Flex	Leading Brand
Excellent Adhesion and Flexibility† even in Cold Climates (40°F)	ASTM D1970	✓	
Outstanding Slip Resistance	ASTM D1984	✓	
Forms End Lap and Side Lap Seals without Special Treatment	ASTM D1970	✓	✓
Seals around Roofing Fasteners	ASTM D1970	✓	✓
Re-roofable		✓	✓
Extended Exposure Time (30 days)		✓	✓
Lays Flat		✓	✓
Excellent Tear Resistance†	ASTM D4037	✓	✓
Owens Corning™ Roofing System		✓	
Durable—Up to 30-Year Limited Warranty		✓	

WeatherLock® Flex Flexible Self-Sealing Ice & Water Barrier Construction

Surface	High-strength cross-laminated poly surface
Adhesive	Modified asphalt
Removable Backing	Peel away release liner
Application	Engineered for asphalt shingles, wood shakes and quarry slate roof assemblies

Typical Values**

Property	2.2 sq. roll
Length	75 ft. (22.8 m)
Width	3 ft. (.9 m)
Area	225 sq. ft. (20.2 m²)
Thickness	40 mils

Applicable Standards and Codes

ASTM D1970
ASTM E108/UL 790 (Class A Fire Resistance)
CCMC 13403-R
ICC-ESR 1783

Physical Properties

Property	Test Method
Slip Resistance	ASTM D1970
Coefficient of Friction	ASTM D1984
Tensile Strength	ASTM D412
Elongation at Break (modified bitumen portion)	ASTM D2523
Permeance	ASTM E96
Adhesion to Plywood, 40°F	ASTM D903
Adhesion to Plywood, 75°F	ASTM D903
Tear Resistance	ASTM D4037
Sealability around Nail	ASTM D1970
Low Temperature Flexibility	ASTM D1970
Waterproofing Integrity after Low Temperature Flex	ASTM D1970
Waterproofing Integrity of Lap	ASTM D1970
Thermal Stability	ASTM D1204

* Ensure proper ventilation is met when applied over the entire roof deck.

** All values are approximate.

† Excellent adhesion & flexibility as compared to other WeatherLock® Self-Sealing Ice & Water Barrier products.