

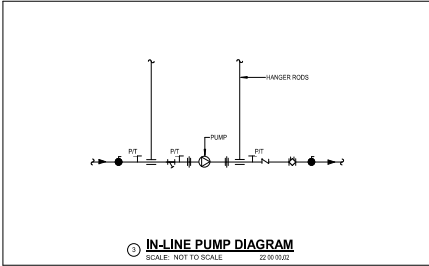
THERMOSTATIC MIXING VALVE SCHEDULE											
SYSTEM	MODEL	TEMPERATURE	INLET 1	INLET 2	OUTLET	VALVE 1	VALVE 2	VALVE 3	VALVE 4	VALVE 5	VALVE 6
			(1)	(2)	(3)	(4)	(5)	(6)	(7)	(8)	(9)
TRAIL	TRAIL	LOW PRESSURE	40	90	100	7	100	15	5	5	5.0
TRAIL	TRAIL	TRAIL	40	90	100	7	100	15	5	5	5.0

NOTES:

1. EQUIPMENT OPERATING PRESSURE IS 150PSI.
2. EQUIPMENT OPERATING PRESSURE IS 150PSI.
3. EQUIPMENT OPERATING PRESSURE IS 150PSI.
4. EQUIPMENT OPERATING PRESSURE IS 150PSI.
5. EQUIPMENT OPERATING PRESSURE IS 150PSI.
6. EQUIPMENT OPERATING PRESSURE IS 150PSI.
7. EQUIPMENT OPERATING PRESSURE IS 150PSI.
8. EQUIPMENT OPERATING PRESSURE IS 150PSI.
9. EQUIPMENT OPERATING PRESSURE IS 150PSI.
10. EQUIPMENT OPERATING PRESSURE IS 150PSI.
11. EQUIPMENT OPERATING PRESSURE IS 150PSI.
12. EQUIPMENT OPERATING PRESSURE IS 150PSI.

REVISIONS:

NO.	DATE	DESCRIPTION
1	10/1/2010	INITIAL DESIGN
2	10/1/2010	REVISION 1
3	10/1/2010	REVISION 2
4	10/1/2010	REVISION 3
5	10/1/2010	REVISION 4
6	10/1/2010	REVISION 5
7	10/1/2010	REVISION 6
8	10/1/2010	REVISION 7
9	10/1/2010	REVISION 8
10	10/1/2010	REVISION 9
11	10/1/2010	REVISION 10
12	10/1/2010	REVISION 11
13	10/1/2010	REVISION 12
14	10/1/2010	REVISION 13
15	10/1/2010	REVISION 14
16	10/1/2010	REVISION 15
17	10/1/2010	REVISION 16
18	10/1/2010	REVISION 17
19	10/1/2010	REVISION 18
20	10/1/2010	REVISION 19
21	10/1/2010	REVISION 20
22	10/1/2010	REVISION 21
23	10/1/2010	REVISION 22
24	10/1/2010	REVISION 23
25	10/1/2010	REVISION 24
26	10/1/2010	REVISION 25
27	10/1/2010	REVISION 26
28	10/1/2010	REVISION 27
29	10/1/2010	REVISION 28
30	10/1/2010	REVISION 29
31	10/1/2010	REVISION 30
32	10/1/2010	REVISION 31
33	10/1/2010	REVISION 32
34	10/1/2010	REVISION 33
35	10/1/2010	REVISION 34
36	10/1/2010	REVISION 35
37	10/1/2010	REVISION 36
38	10/1/2010	REVISION 37
39	10/1/2010	REVISION 38
40	10/1/2010	REVISION 39
41	10/1/2010	REVISION 40
42	10/1/2010	REVISION 41
43	10/1/2010	REVISION 42
44	10/1/2010	REVISION 43
45	10/1/2010	REVISION 44
46	10/1/2010	REVISION 45
47	10/1/2010	REVISION 46
48	10/1/2010	REVISION 47
49	10/1/2010	REVISION 48
50	10/1/2010	REVISION 49
51	10/1/2010	REVISION 50
52	10/1/2010	REVISION 51
53	10/1/2010	REVISION 52
54	10/1/2010	REVISION 53
55	10/1/2010	REVISION 54
56	10/1/2010	REVISION 55
57	10/1/2010	REVISION 56
58	10/1/2010	REVISION 57
59	10/1/2010	REVISION 58
60	10/1/2010	REVISION 59
61	10/1/2010	REVISION 60
62	10/1/2010	REVISION 61
63	10/1/2010	REVISION 62
64	10/1/2010	REVISION 63
65	10/1/2010	REVISION 64
66	10/1/2010	REVISION 65
67	10/1/2010	REVISION 66
68	10/1/2010	REVISION 67
69	10/1/2010	REVISION 68
70	10/1/2010	REVISION 69
71	10/1/2010	REVISION 70
72	10/1/2010	REVISION 71
73	10/1/2010	REVISION 72
74	10/1/2010	REVISION 73
75	10/1/2010	REVISION 74
76	10/1/2010	REVISION 75
77	10/1/2010	REVISION 76
78	10/1/2010	REVISION 77
79	10/1/2010	REVISION 78
80	10/1/2010	REVISION 79
81	10/1/2010	REVISION 80
82	10/1/2010	REVISION 81
83	10/1/2010	REVISION 82
84	10/1/2010	REVISION 83
85	10/1/2010	REVISION 84
86	10/1/2010	REVISION 85
87	10/1/2010	REVISION 86
88	10/1/2010	REVISION 87
89	10/1/2010	REVISION 88
90	10/1/2010	REVISION 89
91	10/1/2010	REVISION 90
92	10/1/2010	REVISION 91
93	10/1/2010	REVISION 92
94	10/1/2010	REVISION 93
95	10/1/2010	REVISION 94
96	10/1/2010	REVISION 95
97	10/1/2010	REVISION 96
98	10/1/2010	REVISION 97
99	10/1/2010	REVISION 98
100	10/1/2010	REVISION 99
101	10/1/2010	REVISION 100
102	10/1/2010	REVISION 101
103	10/1/2010	REVISION 102
104	10/1/2010	REVISION 103
105	10/1/2010	REVISION 104
106	10/1/2010	REVISION 105
107	10/1/2010	REVISION 106
108	10/1/2010	REVISION 107
109	10/1/2010	REVISION 108
110	10/1/2010	REVISION 109
111	10/1/2010	REVISION 110
112	10/1/2010	REVISION 111
113	10/1/2010	REVISION 112
114	10/1/2010	REVISION 113
115	10/1/2010	REVISION 114
116	10/1/2010	REVISION 115
117	10/1/2010	REVISION 116
118	10/1/2010	REVISION 117
119	10/1/2010	REVISION 118
120	10/1/2010	REVISION 119
121	10/1/2010	REVISION 120
122	10/1/2010	REVISION 121
123	10/1/2010	REVISION 122
124	10/1/2010	REVISION 123
125	10/1/2010	REVISION 124
126	10/1/2010	REVISION 125
127	10/1/2010	REVISION 126
128	10/1/2010	REVISION 127
129	10/1/2010	REVISION 128
130	10/1/2010	REVISION 129
131	10/1/2010	REVISION 130
132	10/1/2010	REVISION 131
133	10/1/2010	REVISION 132
134	10/1/2010	REVISION 133
135	10/1/2010	REVISION 134
136	10/1/2010	REVISION 135
137	10/1/2010	REVISION 136
138	10/1/2010	REVISION 137
139	10/1/2010	REVISION 138
140	10/1/2010	REVISION 139
141	10/1/2010	REVISION 140
142	10/1/2010	REVISION 141
143	10/1/2010	REVISION 142
144	10/1/2010	REVISION 143
145	10/1/2010	REVISION 144
146	10/1/2010	REVISION 145
147	10/1/2010	REVISION 146
148	10/1/2010	REVISION 147
149	10/1/2010	REVISION 148
150	10/1/2010	REVISION 149
151	10/1/2010	REVISION 150
152	10/1/2010	REVISION 151
153	10/1/2010	REVISION 152
154	10/1/2010	REVISION 153
155	10/1/2010	REVISION 154
156	10/1/2010	REVISION 155
157	10/1/2010	REVISION 156
158	10/1/2010	REVISION 157
159	10/1/2010	REVISION 158
160	10/1/2010	REVISION 159
161	10/1/2010	REVISION 160
162	10/1/2010	REVISION 161
163	10/1/2010	REVISION 162
164	10/1/2010	REVISION 163
165	10/1/2010	REVISION 164
166	10/1/2010	REVISION 165
167	10/1/2010	REVISION 166
168	10/1/2010	REVISION 167
169	10/1/2010	REVISION 168
170	10/1/2010	REVISION 169
171	10/1/2010	REVISION 170
172	10/1/2010	REVISION 171
173	10/1/2010	REVISION 172
174	10/1/2010	REVISION 173
175	10/1/2010	REVISION 174
176	10/1/2010	REVISION 175
177	10/1/2010	REVISION 176
178	10/1/2010	REVISION 177
179	10/1/2010	REVISION 178
180	10/1/2010	REVISION 179
181	10/1/2010	REVISION 180
182	10/1/2010	REVISION 181
183	10/1/2010	REVISION 182
184	10/1/2010	REVISION 183
185	10/1/2010	REVISION 184
186	10/1/2010	REVISION 185
187	10/1/2010	REVISION 186
188	10/1/2010	REVISION 187
189	10/1/2010	REVISION 188
190	10/1/2010	REVISION 189
191	10/1/2010	REVISION 190
192	10/1/2010	REVISION 191
193	10/1/2010	REVISION 192
194	10/1/2010	REVISION 193
195	10/1/2010	REVISION 194
196	10/1/2010	REVISION 195
197	10/1/2010	REVISION 196
198	10/1/2010	REVISION 197
199	10/1/2010	REVISION 198
200	10/1/2010	REVISION 199
201	10/1/2010	REVISION 200
202	10/1/2010	REVISION 201
203	10/1/2010	REVISION 202
204	10/1/2010	REVISION 203
205	10/1/2010	REVISION 204
206	10/1/2010	REVISION 205
207	10/1/2010	REVISION 206
208	10/1/2010	REVISION 207
209	10/1/2010	REVISION 208
210	10/1/2010	REVISION 209
211	10/1/2010	REVISION 210
212	10/1/2010	REVISION 211
213	10/1/2010	REVISION 212
214	10/1/2010	REVISION 213
215	10/1/2010	REVISION 214
216	10/1/2010	REVISION 215
217	10/1/2010	REVISION 216
218	10/1/2010	REVISION 217
219	10/1/2010	REVISION 218
220	10/1/2010	REVISION 219
221	10/1/2010	REVISION 220
222	10/1/2010	REVISION 221
223	10/1/2010	REVISION 222
224	10/1/2010	REVISION 223
225	10/1/2010	REVISION 224
226	10/1/2010	REVISION 225
227	10/1/2010	REVISION 226
228	10/1/2010	REVISION 227
229	10/1/2010	REVISION 228
230	10/1/2010	REVISION 229
231	10/1/2010	REVISION 230
232	10/1/2010	REVISION 231
233	10/1/2010	REVISION 232
234	10/1/2010	REVISION 233
235	10/1/2010	REVISION 234
236	10/1/2010	REVISION 235
237	10/1/2010	REVISION 236
238	10/1/2010	REVISION 237
239	10/1/2010	REVISION 238
240	10/1/2010	REVISION 239
241	10/1/2010	REVISION 240
242	10/1/2010	REVISION 241
243	10/1/2010	REVISION 242
244	10/1/2010	REVISION 243
245	10/1/2010	REVISION 244
246	10/1/2010	REVISION 245
247	10/1/2010	REVISION 246
248	10/1/2010	REVISION 247
249	10/1/2010	REVISION 248
250	10/1/2010	REVISION 249
251	10/1/2010	REVISION 250
252	10/1/2010	REVISION 251
253	10/1/2010	REVISION 252
254	10/1/2010	REVISION 253
255	10/1/2010	REVISION 254
256	10/1/2010	REVISION 255
257	10/1/2010	REVISION 256
258	10/1/2010	REVISION 257
259	10/1/2010	REVISION 258
260	10/1/2010	REVISION 259
261	10/1/2010	REVISION 260
262	10/1/2010	REVISION 261
263	10/1/2010	REVISION 262
264	10/1/2010	REVISION 263
265	10/1/2010	REVISION 264
266	10/1/2010	REVISION 265
267	10/1/2010	REVISION 266
268	10/1/2010	REVISION 267
269	10/1/2010	REVISION 268
270	10/1/2010	REVISION 269
271	10/1/2010	REVISION 270
272	10/1/2010	REVISION 271
273	10/1/2010	REVISION 272
274	10/1/2010	REVISION 273
275	10/1/2010	REVISION 274
276	10/1/2010	REVISION 275
277	10/1/2010	REVISION 276
278	10/1/2010	REVISION 277
279	10/1/2010	REVISION 278
280	10/1/2010	REVISION 279
281	10/1/2010	REVISION 280
282	10/1/2010	REVISION 281
283	10/1/2010	REVISION 282
284	10/1/2010	REVISION 283
285	10/1/2010	REVISION 284
286	10/1/2010	REVISION 285
287	10/1/2010	REVISION 286
288	10/1/2010	REVISION 287
289	10/1/2010	REVISION 288
290	10/1/2010	REVISION 289
291	10/1/2010	REVISION 290
292	10/1/2010	REVISION 291
293	10/1/2010	REVISION 292
294	10/1/2010	REVISION 293
295	10/1/2010	REVISION 294
296	10/1/2010	REVISION 295
297	10/1/2010	REVISION 296
298	10/1/2010	REVISION 297
299	10/1/2010	REVISION 298
300	10/1/2010	REVISION 299
301	10/1/2010	REVISION 300
302	10/1/2010	REVISION 301
303	10/1/2010	REVISION 302
304	10/1/2010	REVISION 303
305	10/1/2010	REVISION 304
306	10/1/2010	REVISION 305
307	10/1/2010	REVISION 306
308	10/1/2010	REVISION 307
309	10/1/2010	REVISION 308
310	10/1/2010	REVISION 309
311	10/1/2010	REVISION 310
312	10/1/2010	REVISION 311
313	10/1/2010	REVISION 312
314	10/1/2010	REVISION 313
315	10/1/2010	REVISION 314
316	10/1/2010	REVISION 315
317	10/1/2010	REVISION 316
318	10/1/2010	REVISION 317
319	10/1/2010	REVISION 318
320	10/1/2010	REVISION 319
321	10/1/2010	REVISION 320
322	10/1/2010	REVISION 321
323	10/1/2010	





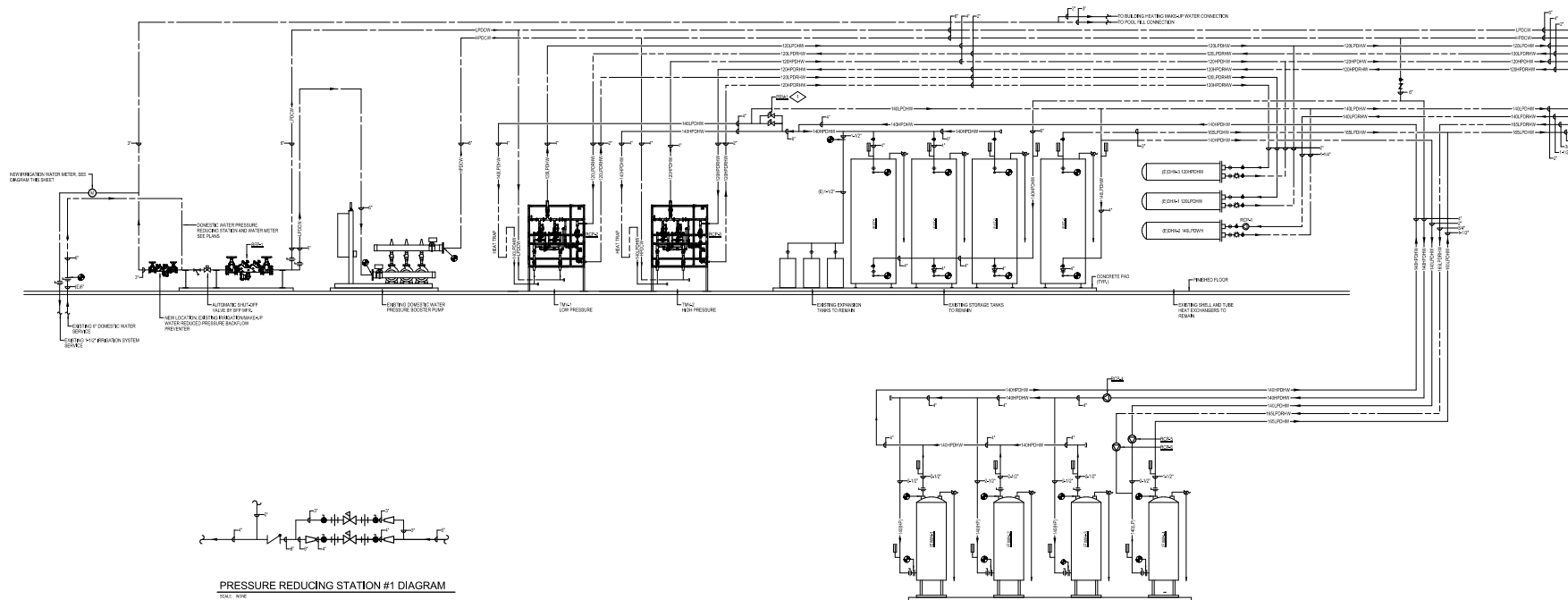
**STEAMBOAT GRAND
PIPING SYSTEM REPLACEMENT**
2300 MT WERNER CIR,
STEAMBOAT SPRINGS, CO 80487

[illegible]

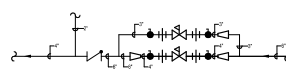
PLUMBING DIAGRAMS



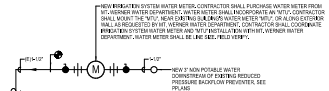
P003



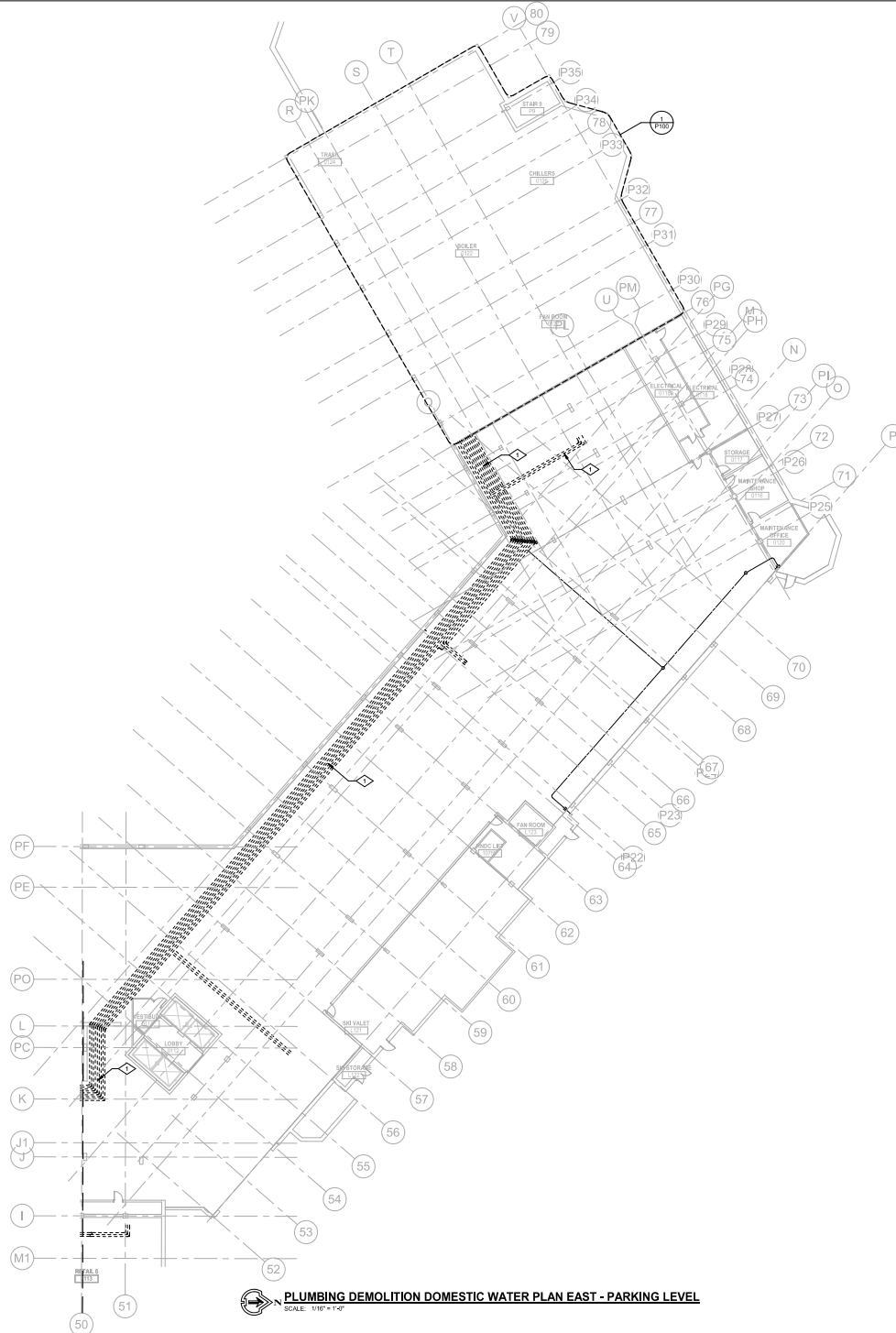
DOMESTIC HOT WATER FLOW DIAGRAM - NEW WORK



PRESSURE REDUCING STATION #1 DIAGRAM



NEW IRRIGATION WATER METER INSTALLATION DIAGRAM



GENERAL NOTES:

1. CONTRACTOR SHALL BE RESPONSIBLE FOR COORDINATING ALL CUTTING AND PATCH WITH GENERAL CONTRACTOR.
2. CONTRACTOR SHALL BE RESPONSIBLE FOR ALL PLUMBING, FIRE, GAS, PIPE, SINK, SUMP, INVERTS, DRAINAGE OF FLOOR, AND EXIST LOCATIONS PRIOR TO REMOVAL WORK.
3. PLANS ARE INFORMATIONAL AND ONLY SHOW THE GENERAL ARRANGEMENT OF SYSTEMS AND WORK INCLUDED. THIS DOES NOT CONSTITUTE A GUARANTEE OF THE EXISTING CONDITIONS. CONTRACTOR SHALL VERIFY ALL WORKING CONDITIONS PRIOR TO ANY TRADE TO BE COMPLETED ON ANY TRADE.
4. REFER TO SCHEDULES, DIMENSIONS AND BROWNIER'S DIMENSIONS FOR ALL PIPE SIZES NOT SHOWN ON PLANS. FIELD VERIFY EXISTING PIPE SIZES PRIOR TO BEGINNING WORK.
5. CONTRACTOR SHALL BE RESPONSIBLE TO COORDINATE ANY AND ALL SERVICE DOWNLINE WITH AFFECTED DEPARTMENTS AND TRAFFIC MANAGER PRIOR TO THE INTERFERENCE OF SERVICE.
6. COORDINATE SCHEDULE OF FLOOR FINISHING AND MAINTENANCE WITH TENANT BELOW AND BUILDING MANAGEMENT PRIOR TO BEGINNING CONSTRUCTION. LEASE ANY EXISTING ROUGH-IN AND BUILDING MAINTENANCE AND WORKING CONDITIONS.
7. CONTRACTOR SHALL COMPLY WITH ALL REQUIREMENTS FOR LOCATING STEEL REINFORCING PRIOR TO MAKING FLOOR PENETRATIONS. PROVIDE WORK AREA AS REQUIRED TO LOCATE STEEL.
8. CONTRACTOR SHALL FIELD VERIFY THE WORKING CONDITIONS OF SERVICE TO EXISTING FEATURES TO REMAIN PRIOR TO BEGINNING CONSTRUCTION WORK.
9. NOT ALL PIPING SYSTEMS ARE SHOWN.

DEMOLITION DRAWING NOTES

1. ROUTE NEW PIPING IN SAME MANNER AS EXISTING PIPING TO BE REMOVED. FIELD VERIFY. CONTRACTOR SHALL UTILIZE EXISTING PIPE ANCHORS/SUPPORTS AS REQUIRED. PROVIDE NEW HANGERS AS REQUIRED.
2. PIPING UP TO KITCHEN ABOVE.
3. PIPING UP TO TOILET ROOM ABOVE.
4. RECONNECT EXISTING 1\"/>



MEP ENGINEERING INC.
44125 Hwy 101, Ste 100
General Contracting
info@mepe.com
www.mepe.com



KLGA
KLEIN & GARDNER
ARCHITECTS
1000 14th St, Suite 100
Boulder, CO 80502
303.440.1234
www.klga.com

STEAMBOAT GRAND
PIPING SYSTEM REPLACEMENT
2300 MT WERNER CIR.
STEAMBOAT SPRINGS, CO 80487

ISSUE	DATE
100% SD	07/15/2021
95% SD	07/15/2021
FOR PERMIT	06/20/2023

PROJECT #: 21056
DESIGNED: MAB
CHECKED: KVB

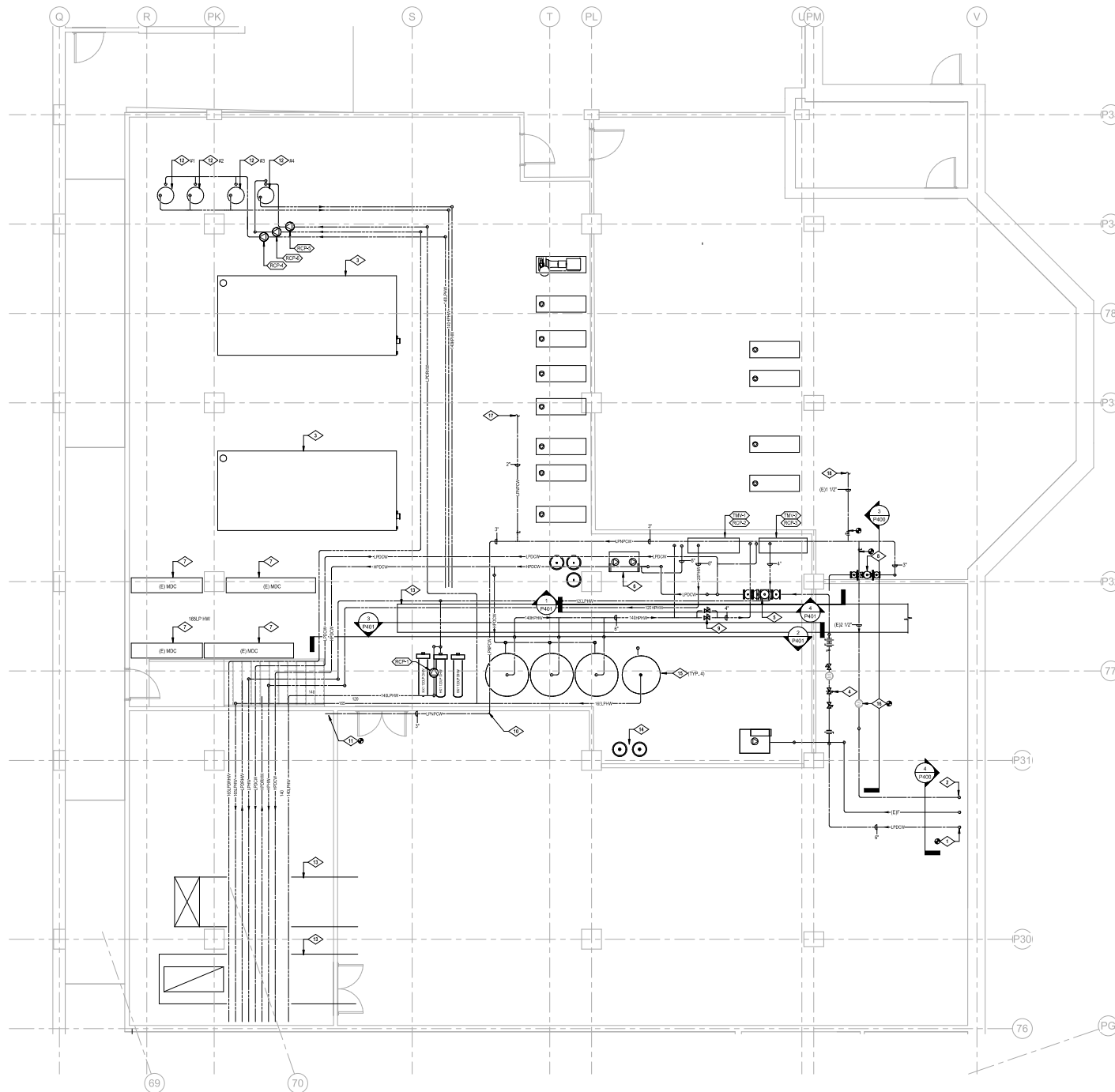
PLUMBING
DEMOLITION
DOMESTIC WATER
PLAN EAST -
PARKING LEVEL



P102

KEY PLAN:

REVIEWED
FOR
CODE
COMPLIANCE
06/20/2023



GENERAL NOTES:

- SCOPE OF WORK: REPLACE EXISTING GALVANIZED DOMESTIC WATER PIPING SYSTEMS WITH NEW PIPING.
- CONTRACTOR SHALL DETERMINE CONSTRUCTION PHASING AND COORDINATE CONSTRUCTION SCHEDULE(S) WITH OWNER DURING CONSTRUCTION.
- CONTRACTOR SHALL NOTIFY THE OWNER SCHEDULED DOMESTIC WATER SERVICE SHUT-DOWN AND DURATION THROUGHOUT CONSTRUCTION.
- CONTRACTOR SHALL BE RESPONSIBLE FOR COORDINATING ALL CUTTING AND PATCH WORK WITH GENERAL CONTRACTOR.
- CONTRACTOR SHALL PROVIDE AND X-RAY CONCRETE STRUCTURE PRIOR TO DRIVING PIPE SUPPORT HANGERS INTO EXISTING CONCRETE. IF DISCREPANCIES ARE ENCOUNTERED, COORDINATE PIPE HANGERS AND SUPPORTS PLACEMENT WITH THE STRUCTURAL ENGINEER.
- CONTRACTOR SHALL FIELD VERIFY ALL PLUMBING SYSTEMS, PIPE SIZES, SLOPES, INVERTS, DIRECTIONS OF FLOW, AND EXACT LOCATIONS PRIOR TO BEGINNING WORK.
- PLANS ARE DIAGRAMMATIC AND ONLY SHOW THE GENERAL ARRANGEMENT OF SYSTEMS AND WORK INCLUDED. THE PLANS DO NOT SHOW EVERY CURVE AND TRANSITION. CONTRACTOR SHALL FOLLOW PLANS IN LAYING OUT WORK AND COORDINATE WITH OTHER BUILDING SYSTEMS TO VERIFY SPACE IN WHICH WORK IS TO BE INSTALLED.
- THE PLANS DON'T SHOW ALL EXISTING INSTALLED MECHANICAL SYSTEMS. CONTRACTOR SHALL FIELD VERIFY AND DETERMINE THE BEST POSSIBLE PIPE ROUTING AND INSTALLATION AS TO NOT INTERFERE WITH OTHER MECHANICAL PIPING AND SYSTEMS OPERATION. INSTALL NEW PIPING ACCORDINGLY.
- THE ORDER IN WHICH THE NEW PIPING IS SHOWN ON THE PLANS IS DIAGRAMMATIC. THE EXACT ORDER AND PIPING PLACEMENT SHALL BE DETERMINED IN THE FIELD BY THE CONTRACTOR UNLESS NOTED OTHERWISE.
- DURING CONSTRUCTION, IF IT MAY BE DETERMINED SOME EXISTING PIPING SYSTEMS HAVE BEEN INSTALLED USING COPPER PIPING, UPON THE DISCOVERY OF SUCH COPPER PIPE SYSTEMS, THE CONTRACTOR SHALL INSPECT PIPING FOR DEFECTS AND STRUCTURAL STABILITY. NOTIFY THE OWNER OF THE CONDITION OF THE EXISTING PIPING. IF SUCH PIPING IS DEEMED UNSALABLE, THE CONTRACTOR SHALL REPLACE.
- SEE DOMESTIC WATER PIPING RISER DIAGRAMS FOR PIPE SIZES NOT SHOWN.

DRAWING NOTES

- CONNECT NEW 6" DOMESTIC COLD WATER TO EXISTING 6" DOMESTIC COLD WATER AT DUCTILE IRON WATER SERVICE ENTRY.
- EXISTING IRRIGATION SYSTEM PIPING DOWN THRU FLOOR TO REMAIN. FIELD VERIFY.
- EXISTING HEATING SYSTEM BOILER TO REMAIN. FIELD VERIFY.
- NEW WATER SERVICE PIPING INSTALLATION. SEE ENLARGED PLAN NEWS SHEET P300 FOR MORE INFORMATION.
- NEW DOMESTIC WATER REDUCED PRESSURE BACKFLOW PREVENTER (RBP-1).
- EXISTING DOMESTIC WATER BOOSTER PUMP TO REMAIN.
- EXISTING ELECTRICAL MOTOR CONTROL CENTER AND ELECTRICAL PANELS. FIELD VERIFY. NO PIPING SHALL BE INSTALLED ABOVE THIS EQUIPMENT.
- NEW LOCATION, EXISTING IRRIGATION MAKE-UP WATER REDUCED PRESSURE BACKFLOW PREVENTER. FIELD VERIFY.
- PRESSURE REDUCING VALVE.
- TOXICATION FROM STAINLESS STEEL PIPING TO CPVC POOL FILL SUPPLY PIPING.
- CPVC POOL FILL SUPPLY PIPING CONNECT TO EXISTING POOL WATER SUPPLY PIPING. FIELD VERIFY.
- EXISTING WATER HEATER TO REMAIN. FIELD VERIFY. WATER HEATER NUMBER NOTED.
- EXISTING HVAC DUCTWORK. FIELD VERIFY AND INSTALL PIPING ACCORDINGLY.
- EXISTING EXPANSION TANKS TO REMAIN.
- EXISTING STORAGE TANKS TO REMAIN.
- NEW IRRIGATION WATER METER. SEE DIAGRAM. INSERT INTO EXISTING PIPING AS REQUIRED.
- CONNECT TO EXISTING HEATING SYSTEM MAKE-UP WATER CONNECTION. FIELD VERIFY.
- CONNECT TO EXISTING CHILLED SYSTEM MAKE-UP WATER CONNECTION. FIELD VERIFY.

STEAMBOAT GRAND
PIPING SYSTEM REPLACEMENT
2300 MT WERNER CIR.
STEAMBOAT SPRINGS, CO 80487

ISSUE	DATE
ISSUE SET	07/15/2021
PIPING SET	11/15/2022
IRON CITY	01/18/2023
FOR REVIEW	06/20/2023

PROJECT #: 21056
DESIGNED: MAB
CHECKED: KVB

ENLARGED
DOMESTIC WATER
MECHANICAL
ROOM PLUMBING
PLAN

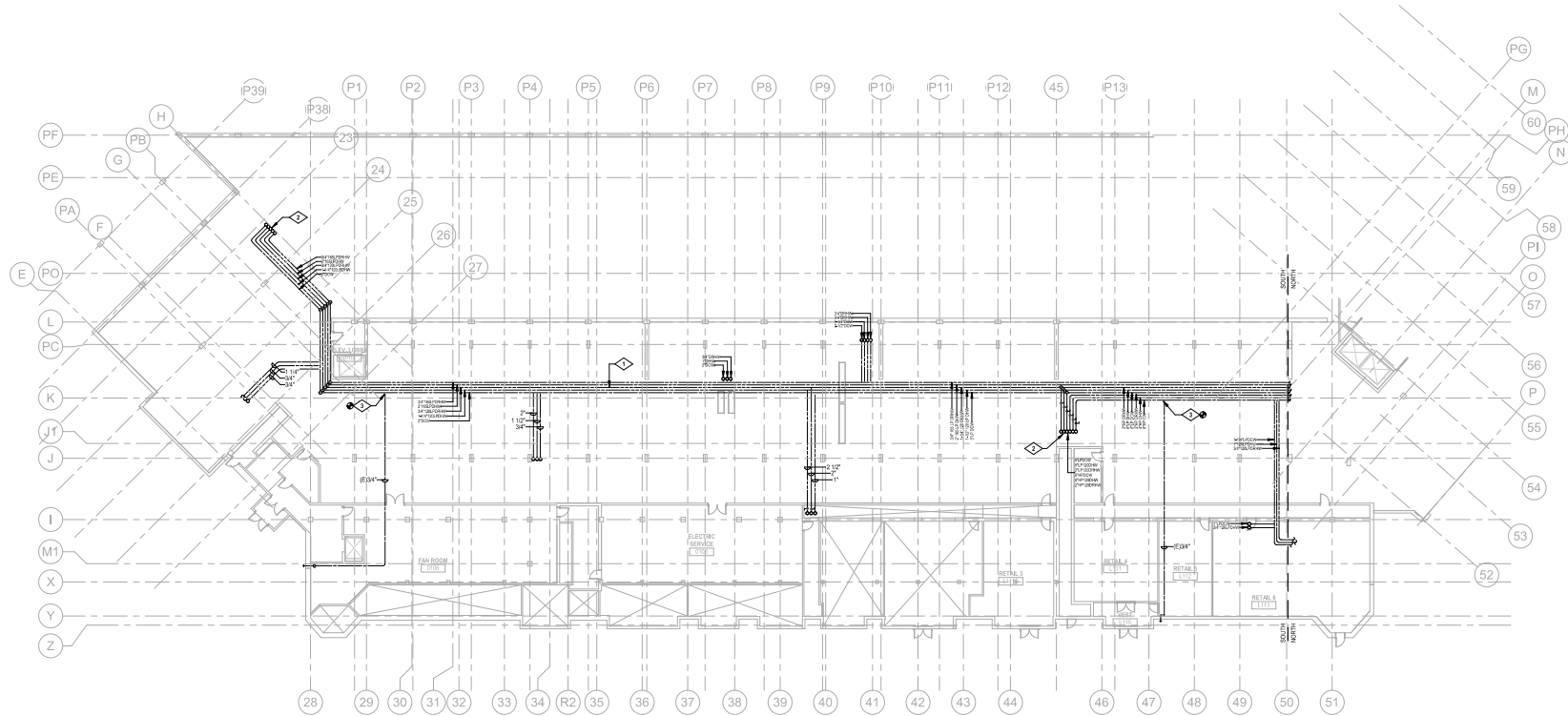


P200



PLUMBING PLAN EAST - MECHANICAL ROOM
SCALE: 1/4" = 1'-0"

REVIEWED
FOR
CODE
COMPLIANCE
06/20/2023



PLUMBING PLAN SOUTH - PARKING LEVEL
SCALE: 1/8" = 1'-0"

GENERAL NOTES:

- SCOPE OF WORK: REPLACE EXISTING GALVANIZED DOMESTIC WATER PIPING SYSTEMS WITH NEW PIPING.
- CONTRACTOR SHALL DETERMINE CONSTRUCTION PHASING AND COORDINATE CONSTRUCTION SCHEDULE(S) WITH OWNER DURING CONSTRUCTION.
- CONTRACTOR SHALL NOTIFY THE OWNER SCHEDULED DOMESTIC WATER SERVICE SHUT-DOWN AND DURATION THROUGHOUT CONSTRUCTION.
- CONTRACTOR SHALL BE RESPONSIBLE FOR COORDINATING ALL CUTTING AND PATCH WORK WITH GENERAL CONTRACTOR.
- CONTRACTOR SHALL PROVIDE AND X-RAY CONCRETE STRUCTURE PRIOR TO DRIVING PIPE SUPPORTS/HANGERS INTO EXISTING CONCRETE. IF DISCREPANCIES ARE ENCOUNTERED, COORDINATE PIPE HANGERS AND SUPPORTS PLACEMENT WITH THE STRUCTURAL ENGINEER.
- CONTRACTOR SHALL FIELD VERIFY ALL PLUMBING SYSTEMS, PIPE SIZES, SLOPES, INVERTS, DIRECTIONS OF FLOW, AND EXACT LOCATIONS PRIOR TO BEGINNING WORK.
- PLANS ARE DIAGRAMMATIC AND ONLY SHOW THE GENERAL ARRANGEMENT OF SYSTEMS AND WORK INCLUDED. THE PLANS DO NOT SHOW EVERY OFFSET AND TRANSITION. CONTRACTOR SHALL FOLLOW PLANS IN LAYING OUT WORK AND COORDINATE WITH OTHER BUILDING SYSTEMS TO VERIFY SPACE IN WHICH WORK IS TO BE INSTALLED.
- THE PLANS DON'T SHOW ALL EXISTING INSTALLED MECHANICAL SYSTEMS. CONTRACTOR SHALL FIELD VERIFY AND DETERMINE THE BEST POSSIBLE PIPE ROUTING AND INSTALLATION AS TO NOT INTERFERE WITH OTHER MECHANICAL PIPING AND SYSTEMS OPERATION. INSTALL NEW PIPING ACCORDINGLY.
- THE ORDER IN WHICH THE NEW PIPING IS SHOWN ON THE PLANS IS DIAGRAMMATIC. THE EXACT ORDER AND PIPING PLACEMENT SHALL BE DETERMINED IN THE FIELD BY THE CONTRACTOR, UNLESS NOTED OTHERWISE.
- DURING CONSTRUCTION, IT MAY BE DETERMINED SOME EXISTING PIPING SYSTEMS HAVE BEEN INSTALLED USING COPPER PIPING. UPON THE DISCOVERY OF SUCH COPPER PIPE SYSTEMS, THE CONTRACTOR SHALL NOTIFY THE OWNER OF THE CONDITION OF THE EXISTING PIPING. IF SUCH PIPING IS DEEMED UNSALVAGEABLE, THE CONTRACTOR SHALL REPLACE.
- SEE DOMESTIC WATER PIPING RISER DIAGRAMS FOR PIPE SIZES NOT SHOWN.

DRAWING NOTES

- ROUTE NEW PIPING IN SAME MANNER AS EXISTING PIPING TO BE REMOVED. FIELD VERIFY. CONTRACTOR SHALL UTILIZE EXISTING PIPE ANCHORS/SUPPORTS AS REQUIRED. PROVIDE NEW HANGERS AS REQUIRED.
- NEW PIPING UP INTO CHASE ABOVE. FIELD VERIFY.
- RECONNECT EXISTING FLOW TO NEW UPDOWN.

KEY PLAN:



**STEAMBOAT GRAND
PIPING SYSTEM REPLACEMENT**
2300 MT WERNER CIR.
STEAMBOAT SPRINGS, CO 80487

ISSUE	DATE
100% SET	07/15/2021
PIPING SET	11/15/2022
ISS. CTRY.	01/18/2023
FOR PROJECT	06/20/2023
PROJECT #	21056
DRAWING	KWB
CHECKED	KWB

**PLUMBING PLAN
SOUTH - PARKING
LEVEL**



P201



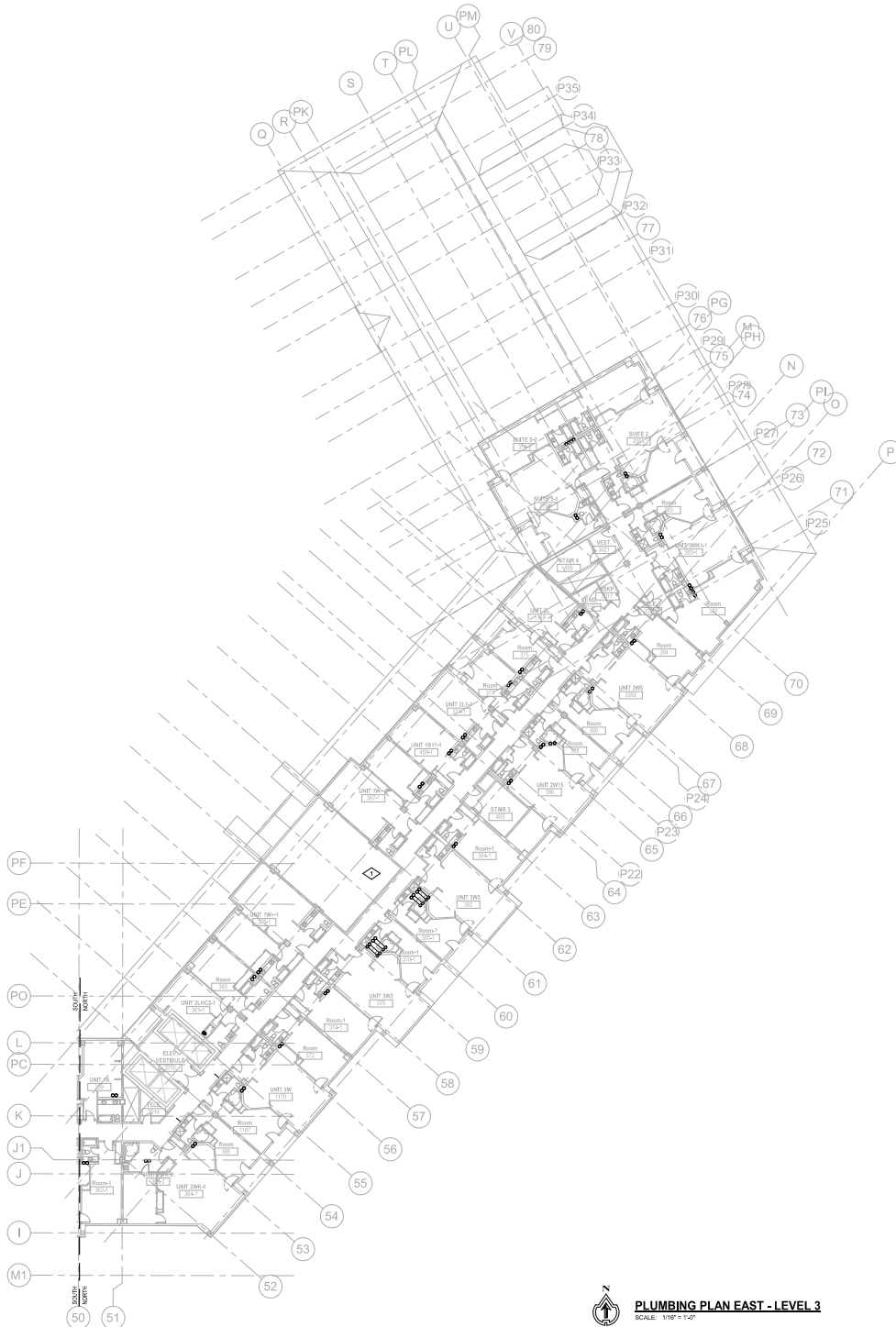
SCALE: 1/16" = 1'-0"

**REVIEWED
FOR
CODE
COMPLIANCE**
06/20/2023



SCALE: 1/16" = 1'-0"

**REVIEWED
FOR
CODE
COMPLIANCE**
06/20/2023



PLUMBING PLAN EAST - LEVEL 3
SCALE: 1/8" = 1'-0"

GENERAL NOTES:

- SCOPE OF WORK: REPLACE EXISTING GALVANIZED DOMESTIC WATER PIPING SYSTEMS WITH NEW PIPING.
- CONTRACTOR SHALL DETERMINE CONSTRUCTION PHASING AND COORDINATE CONSTRUCTION SCHEDULE(S) WITH OWNER DURING CONSTRUCTION.
- CONTRACTOR SHALL NOTIFY THE OWNER SCHEDULED DOMESTIC WATER SERVICE SHUT-DOWN AND DURATION THROUGHOUT CONSTRUCTION.
- CONTRACTOR SHALL BE RESPONSIBLE FOR COORDINATING ALL CUTTING AND PATCH WORK WITH GENERAL CONTRACTOR.
- CONTRACTOR SHALL PROVIDE AND X-RAY CONCRETE STRUCTURE PRIOR TO DRIVING PIPE SUPPORT HANGERS INTO EXISTING CONCRETE. IF DISCREPANCIES ARE ENCOUNTERED, COORDINATE PIPE HANGERS AND SUPPORT PLACEMENT WITH THE STRUCTURAL ENGINEER.
- CONTRACTOR SHALL FIELD VERIFY ALL PLUMBING SYSTEMS, PIPE SIZES, SLOPES, INVERTS, DIRECTIONS OF FLOW, AND EXACT LOCATIONS PRIOR TO BEGINNING WORK.
- PLANS ARE DIAGNOSTIC AND ONLY SHOW THE GENERAL ARRANGEMENT OF SYSTEMS AND WORK INCLUDED. THE PLANS DO NOT SHOW EVERY OFFSET AND TRANSITION. CONTRACTOR SHALL FOLLOW PLANS IN LAYING OUT WORK AND COORDINATE WITH OTHER BUILDING SYSTEMS TO VERIFY SPACE IN WHICH WORK IS TO BE INSTALLED.
- THE PLANS DON'T SHOW ALL EXISTING INSTALLED MECHANICAL SYSTEMS. CONTRACTOR SHALL FIELD VERIFY AND DETERMINE THE BEST POSSIBLE PIPE ROUTING AND INSTALLATIONS AS TO NOT INTERFERE WITH OTHER MECHANICAL PIPING AND SYSTEMS OPERATION. INSTALL NEW PIPING ACCORDINGLY.
- THE ORDER IN WHICH THE NEW PIPING IS SHOWN ON THE PLANS IS DIAGNOSTIC. THE EXACT ORDER AND PIPING PLACEMENT SHALL BE DETERMINED IN THE FIELD BY THE CONTRACTOR, UNLESS NOTED OTHERWISE.
- DURING CONSTRUCTION IT MAY BE DETERMINED SOME EXISTING PIPING SYSTEMS HAVE BEEN INSTALLED USING COPPER PIPING. UPON THE DISCOVERY OF SUCH COPPER PIPE SYSTEMS, THE CONTRACTOR SHALL INSPECT PIPING FOR DEFECTS AND STRUCTURAL STABILITY. NOTIFY THE OWNER OF THE CONDITION OF THE EXISTING PIPING. IF SUCH PIPING IS DEEMED UNSOUND, THE CONTRACTOR SHALL REPLACE.
- SEE DOMESTIC WATER PIPING RISER DIAGRAMS FOR PIPE SIZES NOT SHOWN.

DRAWING NOTES

- NO NEW PLUMBING WORK.



KEY PLAN:

STEAMBOAT GRAND
PIPING SYSTEM REPLACEMENT
2300 MT WERNER CIR.
STEAMBOAT SPRINGS, CO 80487

ISSUE	DATE
ISSN 001	07/15/2021
PIPING SET	11/15/2022
ISSN 002	01/18/2023
FOR REVIEW	06/20/2023

PLUMBING PLAN
NORTH - LEVEL 3



P208



MEP ENGINEERING INC.
64125 Tracy Blvd. Ste 100
General Contractor
info@mepe.com



KLGA
KLAAS & ASSOCIATES
ARCHITECTS
KLAAS INC.

STEAMBOAT GRAND
PIPING SYSTEM REPLACEMENT
2300 MT WERNER CIR.
STEAMBOAT SPRINGS, CO 80487

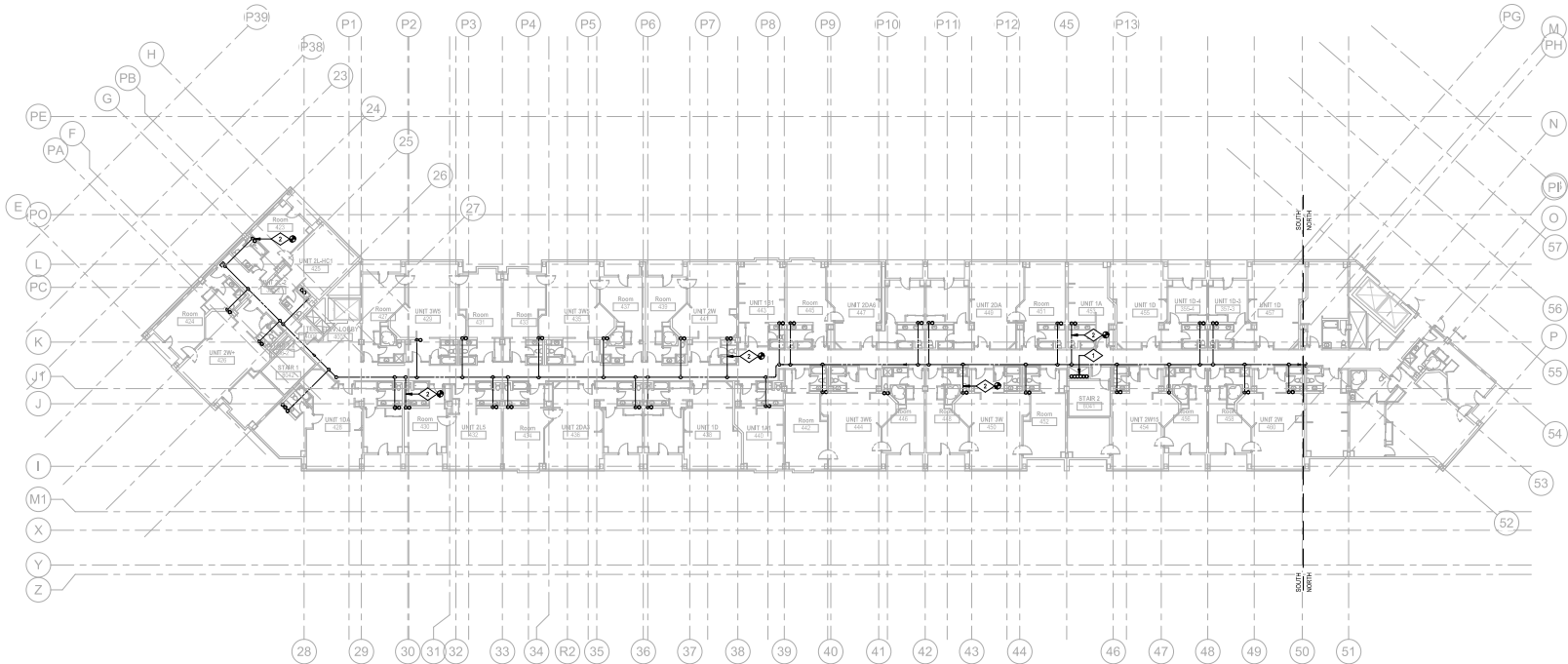
ISSUE	DATE
ISSUE SET	07/15/2021
PIPING SET	11/15/2022
ISSUE SET	01/18/2023
ISSUE SET	06/20/2023

PROJECT # 21056
DESIGNED: MMB
CHECKED: KVB

PLUMBING PLAN
SOUTH - LEVEL 4



P209



PLUMBING PLAN WEST - LEVEL 4

SCALE: 1/8" = 1'-0"

DRAWING NOTES

GENERAL NOTES:

- SCOPE OF WORK: REPLACE EXISTING GALVANIZED DOMESTIC WATER PIPING SYSTEMS WITH NEW PIPING.
- CONTRACTOR SHALL DETERMINE CONSTRUCTION PHASING AND COORDINATE CONSTRUCTION SCHEDULE(S) WITH OWNER DURING CONSTRUCTION.
- CONTRACTOR SHALL NOTIFY THE OWNER SCHEDULED DOMESTIC WATER SERVICE SHUT-DOWN AND DURATION THROUGHOUT CONSTRUCTION.
- CONTRACTOR SHALL BE RESPONSIBLE FOR COORDINATING ALL CUTTING AND PATCH WORK WITH GENERAL CONTRACTOR.
- CONTRACTOR SHALL PROVIDE AND LAID CONCRETE STRUCTURE PRIOR TO DRIVING PIPE SUPPORTS/HANGERS INTO EXISTING CONCRETE. IF DISCREPANCIES ARE ENCOUNTERED, COORDINATE PIPE HANGERS AND SUPPORTS PLACEMENT WITH THE STRUCTURAL ENGINEER.
- CONTRACTOR SHALL FIELD VERIFY ALL PLUMBING SYSTEMS, PIPE SIZES, SLOPES, INVERTS, DIRECTIONS OF FLOW, AND EXACT LOCATIONS PRIOR TO BEGINNING WORK.
- PLANS ARE DIAGNOSTIC AND ONLY SHOW THE GENERAL ARRANGEMENT OF SYSTEMS AND WORK INCLUDED. THE PLANS DO NOT SHOW EVERY OFFSET AND TRANSITION. CONTRACTOR SHALL FOLLOW PLANS IN LAYING OUT WORK AND COORDINATE WITH OTHER BUILDING SYSTEMS TO VERIFY SPACE IN WHICH WORK IS TO BE INSTALLED.
- THE PLANS DON'T SHOW ALL EXISTING INSTALLED MECHANICAL SYSTEMS. CONTRACTOR SHALL FIELD VERIFY AND DETERMINE THE BEST POSSIBLE PIPE ROUTING AND INSTALLATION AS TO NOT INTERFERE WITH OTHER MECHANICAL PIPING AND SYSTEMS OPERATION. INSTALL NEW PIPING ACCORDINGLY.
- THE ORDER IN WHICH THE NEW PIPING IS SHOWN ON THE PLANS IS DIAGNOSTIC. THE EXACT ORDER AND PIPING PLACEMENT SHALL BE DETERMINED IN THE FIELD BY THE CONTRACTOR, UNLESS NOTED OTHERWISE.
- DURING CONSTRUCTION, IT MAY BE DETERMINED SOME EXISTING PIPING SYSTEMS HAVE BEEN INSTALLED USING COPPER PIPING. UPON THE DISCOVERY OF SUCH COPPER PIPE SYSTEMS, THE CONTRACTOR SHALL NOTIFY THE OWNER OF THE CONDITION OF THE EXISTING PIPING. IF SUCH PIPING IS DEEMED UNUSABLE, THE CONTRACTOR SHALL REPLACE.
- SEE DOMESTIC WATER PIPING RISER DIAGRAMS FOR PIPE SIZES NOT SHOWN.

- REMOVE EXISTING CW, HW, HWIC UP AND DOWN IN CHASE, PROVIDE NEW DOMESTIC CW, HW, HWIC UP AND DOWN IN EXISTING CHASE. SEE DOMESTIC WATER PIPING RISER DIAGRAMS.
- AT THE TOP OF PIPE RISER, IN EACH UNIT, REPLACE BALANCING VALVE WITH NEW, FIELD VERIFY. SEE FLOW DIAGRAMS, TYPICAL ALL DWELLING UNITS.

KEY PLAN:

REVIEWED
FOR
CODE
COMPLIANCE
06/20/2023



SCALE: 1/16" = 1'-0"

1. SCOPE OF WORK: REPLACE EXISTING GALVANIZED DOMESTIC WATER PIPING SYSTEMS WITH NEW PIPING.
2. CONTRACTOR SHALL DETERMINE CONSTRUCTION PHASINGS AND COORDINATE CONSTRUCTION SCHEDULE(S) WITH OWNER DURING CONSTRUCTION.
3. CONTRACTOR SHALL NOTIFY THE OWNER SCHEDULED DOMESTIC WATER SERVICE SHUT-DOWN AND DURATION THROUGHOUT CONSTRUCTION.
4. CONTRACTOR SHALL BE RESPONSIBLE FOR COORDINATING ALL CUTTING AND PATCH WORK WITH GENERAL CONTRACTOR.
5. CONTRACTOR SHALL PROVIDE AND MAINTAIN CONSTRUCTED STRUCTURE PERMANENT SURROUNDING EXISTING PIPING. EXISTING PIPING SHALL BE DISCONNECTED AND ARE CONSIDERED CORRODED PIPE HANGERS AND SHALL BE REMOVED WITH GENERAL CONTRACTOR.
6. CONTRACTOR SHALL FIELD VERIFY ALL PLUMBING SYSTEM, PIPE SIZES, SLOPES, INVERTS, DIRECTIONS OF FLOW, AND EXACT LOCATIONS PER PLANS.
7. PLANS ARE PRELIMINARY AND ONLY SHOW THE GENERAL ARRANGEMENT OF SYSTEMS AND WORK INCLUDED. THE PLANS DO NOT SHOW THE EXACT LOCATION AND PIPING. CONTRACTOR SHALL FOLLOW PLANS BY LAYING OUT WORK AND COORDINATE WITH OTHERS BUILDING TO THE SAME PIPING SPECIFICATIONS.
8. THE PLANS DON'T SHOW ALL EXISTING INSTALLED MECHANICAL, SYSTEMS, CONTRACTOR SHALL FIELD VERIFY AND DETERMINE THE BEST METHOD OF ROUTING AND INSTALLING NEW PIPING. CONTRACTOR SHALL FIELD VERIFY ALL PIPING AND SYSTEMS ORIGINALLY, INSTALL NEW PIPING ACCORDING.
9. THE ORDER IN WHICH THE NEW PIPING IS SHOWN ON THE PLANS IS THE ORDER IN WHICH THE CONTRACTOR SHALL CONSTRUCT. THE ORDER IS DETERMINED IN THE FIELD BY THE CONTRACTOR, UNLESS NOTED OTHERWISE.
10. DURING CONSTRUCTION, IF IT MAY BE DETERMINED SOME EXISTING PIPING SYSTEMS HAVE BEEN INSTALLED USING CORRODED COPPER PIPING, UPON THE ORDER OF EACH CONTRACTOR TO REMOVE THE SYSTEM, THE CONTRACTOR SHALL INSPECT PIPING FOR DEFECTS AND STRUCTURAL STRENGTH.
11. IF THE ORDER OF THE PIPING IS NOT DETERMINED, CONTRACTOR, IF SUCH PIPING IS DEEMED UNSAFE, THE CONTRACTOR SHALL REPLACE.
12. SEE DOMESTIC WATER PIPING RIBEN DIAGRAMS FOR PIPE SIZES NOT

1 AT THE TOP OF PIPE RISER, IN EACH UNIT, REPLACE BALANCING VALVE WITH NEW. FIELD VERIFY. SEE FLOW DIAGRAMS, TYPICAL ALL DWELLING UNITS.



P210

**REVIEWED
FOR
CODE
COMPLIANCE**
06/20/2023

KEY PLAN:



MEP ENGINEERING INC.
64125 Hwy 66, Ste 100 W. 80.526.503
General: 271.6111 W: 80.526.503
info@meper.com www.meper.com



DAVIS
PARTNERSHIP
ARCHITECTS



STEAMBOAT GRAND
PIPING SYSTEM REPLACEMENT
2300 MT WERNER CIR.
STEAMBOAT SPRINGS, CO 80487

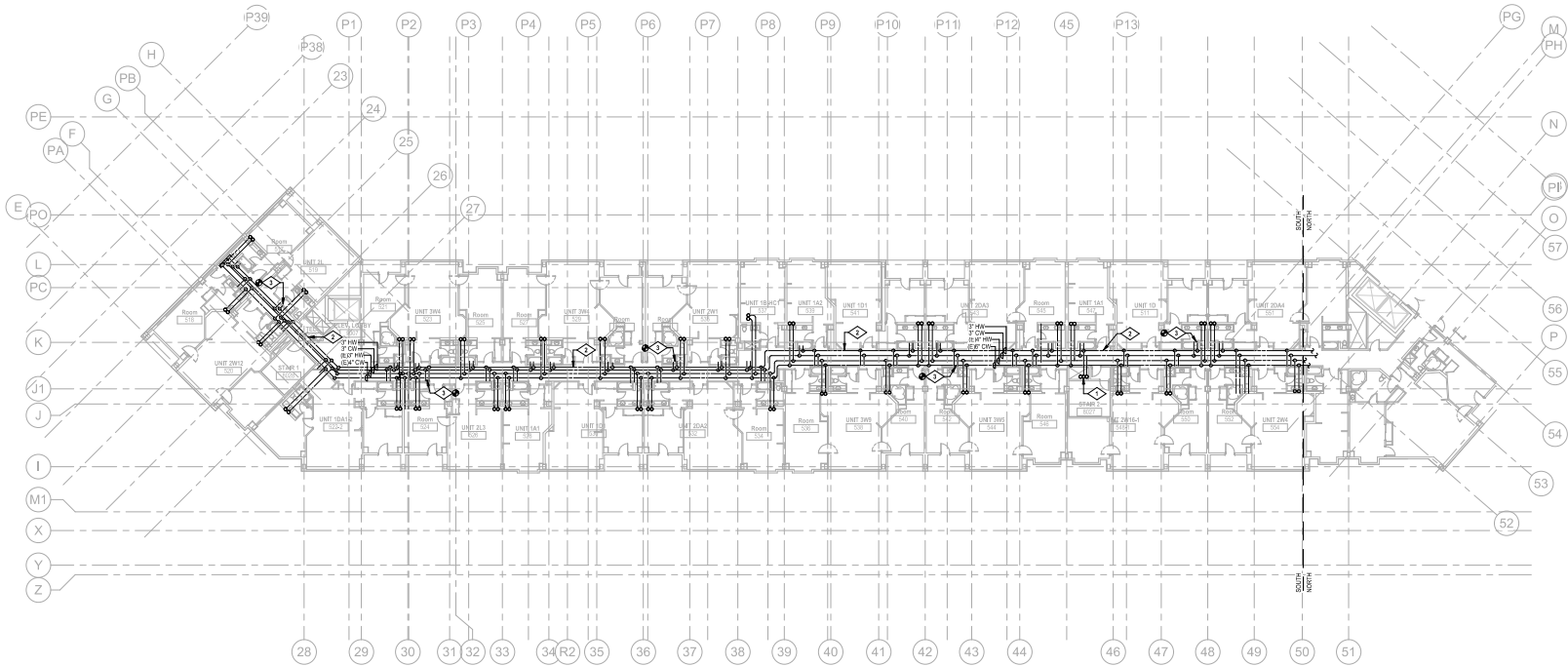
ISSUE	DATE
ISSUE SET	07/15/2021
PIPING SET	11/15/2022
REV. 001	01/15/2023
FOR REVIEW	06/20/2023

PROJECT #: 21056
DESIGNED: MMB
CHECKED: KVB

PLUMBING PLAN
SOUTH - LEVEL 5



P211



PLUMBING PLAN WEST - LEVEL 5

SCALE: 1/8" = 1'-0"

DRAWING NOTES

GENERAL NOTES:

- SCOPE OF WORK: REPLACE EXISTING GALVANIZED DOMESTIC WATER PIPING SYSTEMS WITH NEW PIPING.
- CONTRACTOR SHALL DETERMINE CONSTRUCTION PHASING AND COORDINATE CONSTRUCTION SCHEDULES WITH OWNER DURING CONSTRUCTION.
- CONTRACTOR SHALL NOTIFY THE OWNER SCHEDULED DOMESTIC WATER SERVICE SHUT-DOWN AND DURATION THROUGHOUT CONSTRUCTION.
- CONTRACTOR SHALL BE RESPONSIBLE FOR COORDINATING ALL CUTTING AND PATCH WORK WITH GENERAL CONTRACTOR.
- CONTRACTOR SHALL PROVIDE AND LAY-UP CONCRETE STRUCTURE PRIOR TO DRIVING PIPE SUPPORTS/HANGERS INTO EXISTING CONCRETE. IF DISCREPANCIES ARE ENCOUNTERED, COORDINATE PIPE HANGERS AND SUPPORTS PLACEMENT WITH THE STRUCTURAL ENGINEER.
- CONTRACTOR SHALL FIELD VERIFY ALL PLUMBING SYSTEMS, PIPE SIZES, SLOPES, INVERTS, DIRECTIONS OF FLOW, AND EXACT LOCATIONS PRIOR TO BEGINNING WORK.
- PLANS ARE DIAGNOSTIC AND ONLY SHOW THE GENERAL ARRANGEMENT OF SYSTEMS AND WORK INCLUDES. THE PLANS DO NOT SHOW EVERY OFFSET AND TRANSITION. CONTRACTOR SHALL FOLLOW PLANS IN LAYING OUT WORK AND COORDINATE WITH OTHER BUILDING SYSTEMS TO VERIFY SPACE IN WHICH WORK IS TO BE INSTALLED.
- THE PLANS DON'T SHOW ALL EXISTING INSTALLED MECHANICAL SYSTEMS. CONTRACTOR SHALL FIELD VERIFY AND DETERMINE THE BEST POSSIBLE PIPE ROUTING AND INSTALLATION AS TO NOT INTERFERE WITH OTHER MECHANICAL PIPING AND SYSTEMS OPERATION. INSTALL NEW PIPING ACCORDINGLY.
- THE ORDER IN WHICH THE NEW PIPING IS SHOWN ON THE PLANS IS DIAGNOSTIC. THE EXACT ORDER AND PIPING PLACEMENT SHALL BE DETERMINED IN THE FIELD BY THE CONTRACTOR, UNLESS NOTED OTHERWISE.
- DURING CONSTRUCTION, IT MAY BE DETERMINED SOME EXISTING PIPING SYSTEMS HAVE BEEN INSTALLED USING COPPER PIPING. UPON THE DISCOVERY OF SUCH COPPER PIPE SYSTEMS, THE CONTRACTOR SHALL INSPECT PIPING FOR DEFECTS AND STRUCTURAL STABILITY. NOTIFY THE OWNER OF THE CONDITION OF THE EXISTING PIPING. IF SUCH PIPING IS DETERMINED UNSOUND, THE CONTRACTOR SHALL REPLACE.
- SEE DOMESTIC WATER PIPING RISER DIAGRAMS FOR PIPE SIZES NOT SHOWN.

- REMOVE EXISTING CW, HW, HWIC UP AND DOWN IN CHASE. PROVIDE NEW DOMESTIC CW, HW, HWIC UP AND DOWN IN EXISTING CHASE. SEE DOMESTIC WATER PIPING RISER DIAGRAMS.
- REMOVE EXISTING CW, HW, GALVANIZED PIPING ABOVE CEILING. INSTALL NEW CW, HW PIPING IN SAME LOCATION, MANNER AS THE EXISTING PIPING. CONTRACTOR TO REUSE PIPE SUPPORT SYSTEM, PROVIDE NEW PIPE HANGERS, SEE DOMESTIC WATER PIPING RISER DIAGRAMS.
- TYPICAL CONNECT NEW BRANCH PIPING FROM NEW CW, HW, MAINS TO DWELLING UNIT PIPING CONNECTIONS. PROVIDE ISOLATION VALVES. SEE DOMESTIC WATER PIPING RISER DIAGRAMS.

KEY PLAN:

REVIEWED
FOR
CODE
COMPLIANCE
06/20/2023

**REVIEWED
FOR
CODE
COMPLIANCE**
06/20/2023



MEP ENGINEERING INC.
44125 Hwy 66, Ste 100 W. 80.00.000
General: 215.811.1111 W. 80.00.000
info@mepeinc.com www.mepeinc.com



STEAMBOAT GRAND
PIPING SYSTEM REPLACEMENT
2300 MT WERNER CIR.
STEAMBOAT SPRINGS, CO 80487

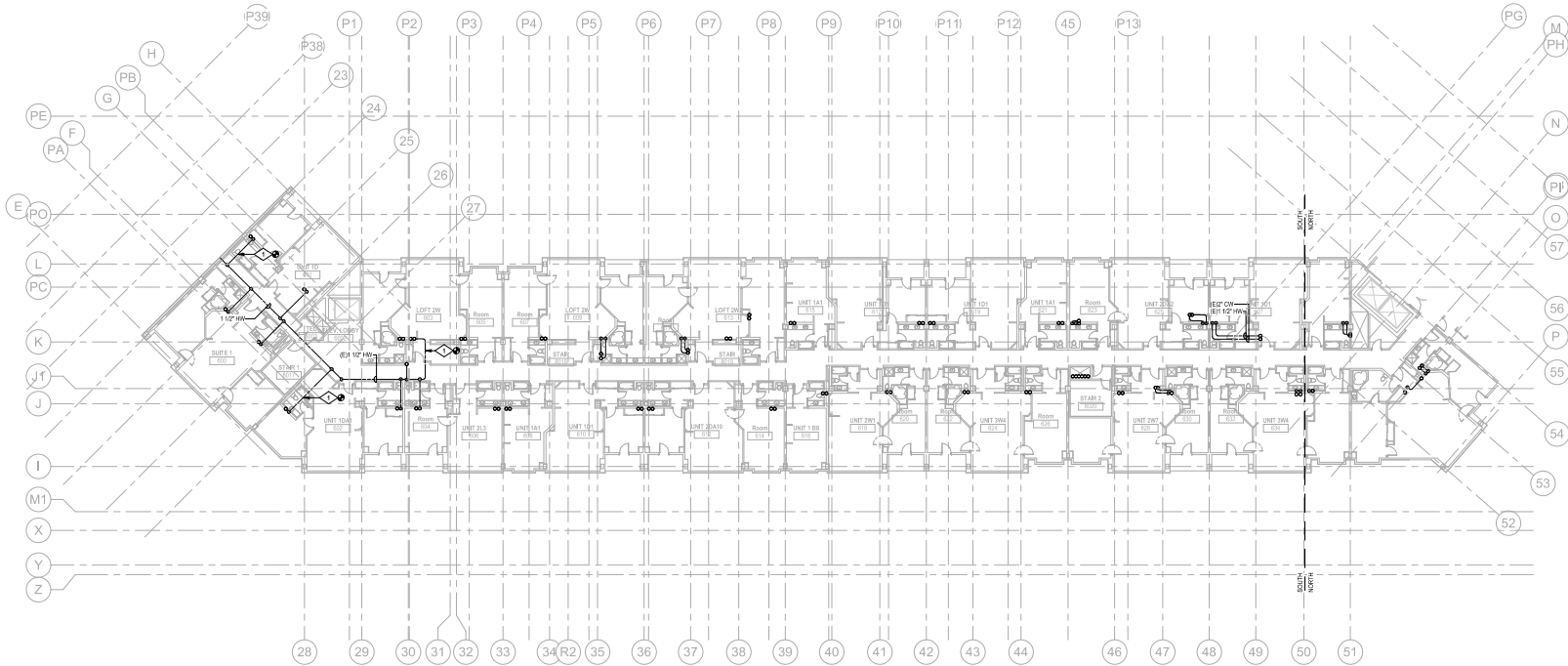
ISSUE	DATE
ISSUE NO.	01/15/2021
PIPING SET	11/15/2022
REV. 001	01/18/2023
FOR REVIEW	06/20/2023

PROJECT #: 21056
DESIGNED: KMB
CHECKED: KMB

PLUMBING PLAN
SOUTH - LEVEL 6



P213



PLUMBING PLAN WEST - LEVEL 6

SCALE: 1/8" = 1'-0"

DRAWING NOTES

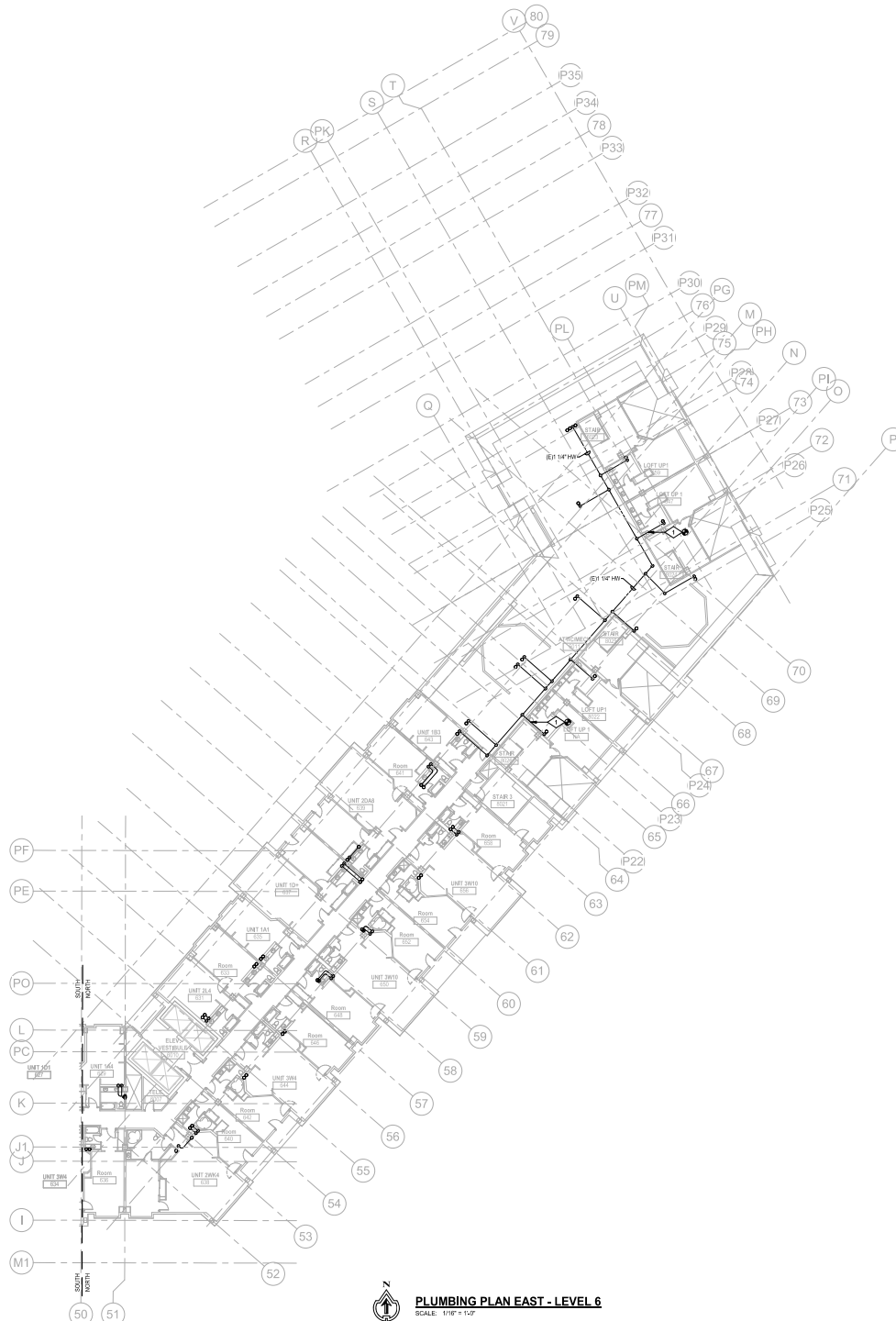
1. AT THE TOP OF PIPE RISER, IN EACH UNIT, REPLACE BALANCING VALVE WITH NEW, FIELD VERIFY. SEE FLOW DIAGRAM, TYPICAL ALL DWELLING UNITS.

GENERAL NOTES:

1. SCOPE OF WORK: REPLACE EXISTING GALVANIZED DOMESTIC WATER PIPING SYSTEMS WITH NEW PIPING.
2. CONTRACTOR SHALL DETERMINE CONSTRUCTION PHASING AND COORDINATE CONSTRUCTION SCHEDULES WITH OWNER DURING CONSTRUCTION.
3. CONTRACTOR SHALL NOTIFY THE OWNER SCHEDULED DOMESTIC WATER SERVICE SHUT-DOWN AND DURATION THROUGHOUT CONSTRUCTION.
4. CONTRACTOR SHALL BE RESPONSIBLE FOR COORDINATING ALL CUTTING AND PATCH WORK WITH GENERAL CONTRACTOR.
5. CONTRACTOR SHALL PROVIDE 4" x 4" CONCRETE STRUCTURE PRIOR TO DRIVING PIPE SUPPORTS/HANGERS INTO EXISTING CONCRETE. IF DISCREPANCIES ARE ENCOUNTERED, COORDINATE PIPE HANGERS AND SUPPORTS PLACEMENT WITH THE STRUCTURAL ENGINEER.
6. CONTRACTOR SHALL FIELD VERIFY ALL PLUMBING SYSTEMS, PIPE SIZES, SLOPES, INVERTS, DIRECTIONS OF FLOW, AND EXACT LOCATIONS PRIOR TO BEGINNING WORK.
7. PLANS ARE DIAGNOSTIC AND ONLY SHOW THE GENERAL ARRANGEMENT OF SYSTEMS AND WORK INCLUDES. THE PLANS DO NOT SHOW EVERY OFFSET AND TRANSITION. CONTRACTOR SHALL FOLLOW PLANS IN LAYING OUT WORK AND COORDINATE WITH OTHER BUILDING SYSTEMS TO VERIFY SPACE IN WHICH WORK IS TO BE INSTALLED.
8. THE PLANS DO NOT SHOW ALL EXISTING INSTALLED MECHANICAL SYSTEMS. CONTRACTOR SHALL FIELD VERIFY AND DETERMINE THE BEST POSSIBLE PIPE ROUTING AND INSTALLATION AS TO NOT INTERFERE WITH OTHER MECHANICAL PIPING AND SYSTEMS OPERATION. INSTALL NEW PIPING ACCORDINGLY.
9. THE ORDER IN WHICH THE NEW PIPING IS SHOWN ON THE PLANS IS DIAGNOSTIC. THE EXACT ORDER AND PIPING PLACEMENT SHALL BE DETERMINED IN THE FIELD BY THE CONTRACTOR, UNLESS NOTED OTHERWISE.
10. DURING CONSTRUCTION, IF IT MAY BE DETERMINED SOME EXISTING PIPING SYSTEMS HAVE BEEN INSTALLED USING COPPER PIPING, UPON THE DISCOVERY OF SUCH COPPER PIPE SYSTEMS, THE CONTRACTOR SHALL INSPECT PIPING FOR DEFECTS AND STRUCTURAL STABILITY. NOTIFY THE OWNER OF THE CONDITION OF THE EXISTING PIPING. IF SUCH PIPING IS DETERMINED UNUSABLE, THE CONTRACTOR SHALL REPLACE.
11. SEE DOMESTIC WATER PIPING RISER DIAGRAMS FOR PIPE SIZES NOT SHOWN.

KEY PLAN:

REVIEWED
FOR
CODE
COMPLIANCE
06/20/2023



PLUMBING PLAN EAST - LEVEL 6
SCALE: 1/8" = 1'-0"

GENERAL NOTES:

- SCOPE OF WORK: REPLACE EXISTING GALVANIZED DOMESTIC WATER PIPING SYSTEMS WITH NEW PIPING.
- CONTRACTOR SHALL DETERMINE CONSTRUCTION PHASING AND COORDINATE CONSTRUCTION SCHEDULE(S) WITH OWNER DURING CONSTRUCTION.
- CONTRACTOR SHALL NOTIFY THE OWNER SCHEDULED DOMESTIC WATER SERVICE SHUT-DOWN AND DURATION THROUGHOUT CONSTRUCTION.
- CONTRACTOR SHALL BE RESPONSIBLE FOR COORDINATING ALL CUTTING AND PATCH WORK WITH GENERAL CONTRACTOR.
- CONTRACTOR SHALL PROVIDE AND XRAY CONCRETE STRUCTURE PRIOR TO LAYING PIPE SUPPORT HANGERS INTO EXISTING CONCRETE. IF DISCREPANCIES ARE ENCOUNTERED, COORDINATE PIPE HANGERS AND SUPPORTS PLACEMENT WITH THE STRUCTURAL ENGINEER.
- CONTRACTOR SHALL FIELD VERIFY ALL PLUMBING SYSTEMS, PIPES SIZES, SLOPES, INVERTS, DIRECTIONS OF FLOW, AND EXACT LOCATIONS PRIOR TO BEGINNING WORK.
- PLANS ARE DIAGRAMMATIC AND ONLY SHOW THE GENERAL ARRANGEMENT OF SYSTEMS AND WORK INCLUDED. THE PLANS DO NOT SHOW EVERY OFFSET AND TRANSITION. CONTRACTOR SHALL FOLLOW PLANS IN LAYING OUT WORK AND COORDINATE WITH OTHER BUILDING SYSTEMS TO VERIFY SPACE IN WHICH WORK IS TO BE INSTALLED.
- THE PLANS DON'T SHOW ALL EXISTING INSTALLED MECHANICAL SYSTEMS. CONTRACTOR SHALL FIELD VERIFY AND DETERMINE THE BEST POSSIBLE PIPE ROUTING AND INSTALLATION AS TO NOT INTERFERE WITH OTHER MECHANICAL PIPING AND SYSTEMS OPERATION. INSTALL NEW PIPING ACCORDINGLY.
- THE ORDER IN WHICH THE NEW PIPING IS SHOWN ON THE PLANS IS DIAGRAMMATIC. THE EXACT ORDER AND PIPING PLACEMENT SHALL BE DETERMINED IN THE FIELD BY THE CONTRACTOR, UNLESS NOTED OTHERWISE.
- DURING CONSTRUCTION, IT MAY BE DETERMINED SOME EXISTING PIPING SYSTEMS HAVE BEEN INSTALLED USING COPPER PIPING. UPON THE DISCOVERY OF SUCH COPPER PIPE SYSTEMS, THE CONTRACTOR SHALL INSPECT PIPING FOR DEFECTS AND STRUCTURAL STABILITY. NOTIFY THE OWNER OF THE CONDITION OF THE EXISTING PIPING. IF SUCH PIPING IS DEEMED UNUSABLE, THE CONTRACTOR SHALL REPLACE.
- SEE DOMESTIC WATER PIPING RISER DIAGRAMS FOR PIPE SIZES NOT SHOWN.

DRAWING NOTES

- AT THE TOP OF FIRE RISER, IN EACH UNIT, REPLACE BALANCING VALVE WITH NEW. FIELD VERIFY. SEE FLOW DIAGRAMS, TYPICAL ALL DWELLING UNITS.



MEP ENGINEERING INC.
44125 Hwy 104, Ste 100 | P.O. Box 100
General Contractor | 719.554.1000
info@mepeing.com | www.mepeing.com



DAVIS
PARTNERSHIP
ARCHITECTS

K&A
Engineering & Architecture
2300 MT Werner Cir.
Steamboat Springs, CO 80487
8-2021
K&A, INC.

STEAMBOAT GRAND
PIPING SYSTEM REPLACEMENT
2300 MT WERNER CIR.
STEAMBOAT SPRINGS, CO 80487

ISSUE	DATE
ISSUE NO.	11/15/2021
PIPING SET	11/15/2021
ISSUE NO.	01/18/2022
ISSUE NO.	06/20/2023

PROJECT #: 21056
DESIGNED: MAB
CHECKED: KVB

PLUMBING PLAN
NORTH - LEVEL 6



P214

KEY PLAN:

REVIEWED
FOR
CODE
COMPLIANCE
06/20/2023



MEP ENGINEERING INC.
64125 Tracy Rd., Ste 100
General Contractor
info@mepe.com



DAVIS
PARTNERSHIP
ARCHITECTS



KLGA
K.L.A.A. INC.

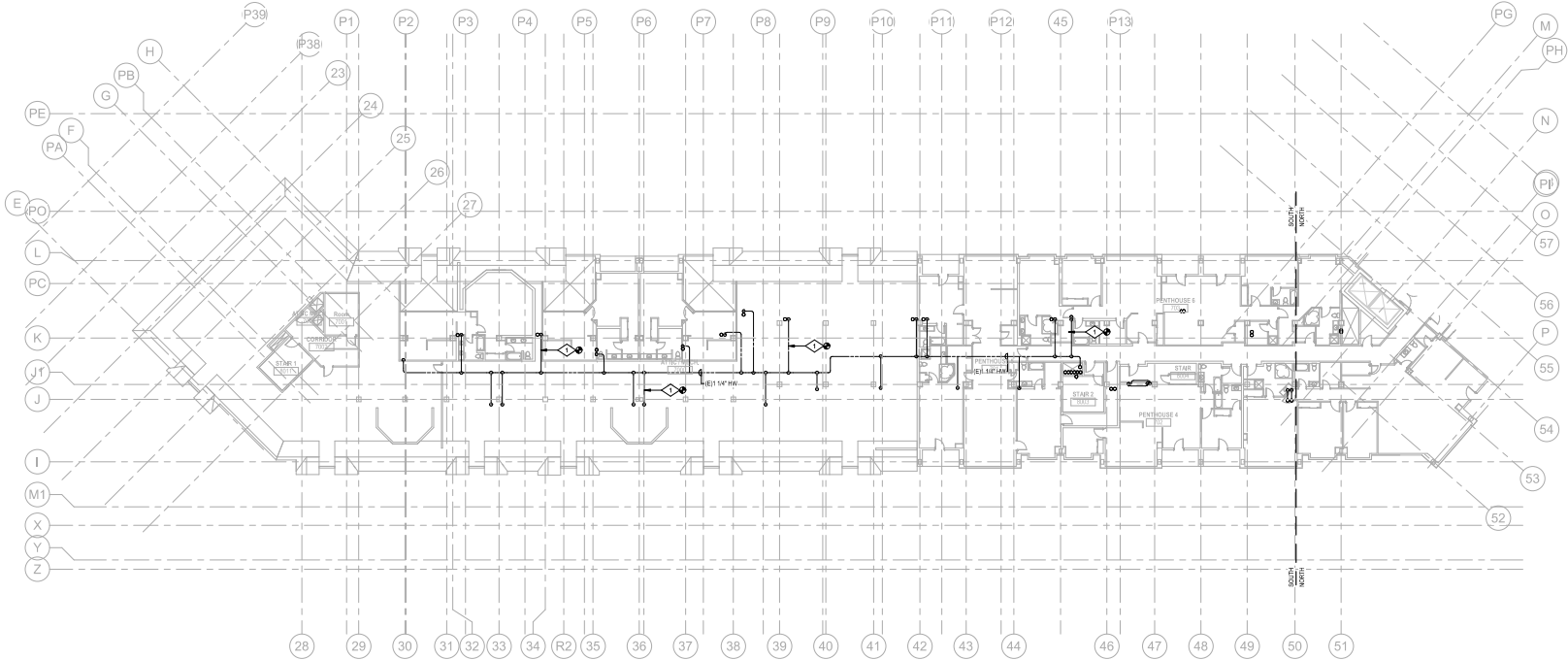
STEAMBOAT GRAND
PIPING SYSTEM REPLACEMENT
2300 MT WERNER CIR.
STEAMBOAT SPRINGS, CO 80487

ISSUE	DATE
ISSUE SET	07/15/2021
PIPING SET	11/15/2022
ISSUE SET	01/18/2023
ISSUE SET	06/20/2023
PROJECT #	21056
DESIGNED BY	MMB
CHECKED BY	KVB

PLUMBING PLAN
SOUTH - LEVEL 7



P215



PLUMBING PLAN WEST - LEVEL 7

SCALE: 1/16" = 1'-0"

DRAWING NOTES

GENERAL NOTES:

1. SCOPE OF WORK: REPLACE EXISTING GALVANIZED DOMESTIC WATER PIPING SYSTEMS WITH NEW PIPING.
2. CONTRACTOR SHALL DETERMINE CONSTRUCTION PHASING AND COORDINATE CONSTRUCTION SCHEDULE(S) WITH OWNER DURING CONSTRUCTION.
3. CONTRACTOR SHALL NOTIFY THE OWNER SCHEDULED DOMESTIC WATER SERVICE SHUT-DOWN AND DURATION THROUGHOUT CONSTRUCTION.
4. CONTRACTOR SHALL BE RESPONSIBLE FOR COORDINATING ALL CUTTING AND PATCH WORK WITH GENERAL CONTRACTOR.
5. CONTRACTOR SHALL PROVIDE AND X-RAY CONCRETE STRUCTURE PRIOR TO DRIVING PIPE SUPPORTS/HANGERS INTO EXISTING CONCRETE. IF DISCREPANCIES ARE ENCOUNTERED, COORDINATE PIPE HANGERS AND SUPPORTS PLACEMENT WITH THE STRUCTURAL ENGINEER.
6. CONTRACTOR SHALL FIELD VERIFY ALL PLUMBING SYSTEMS, PIPE SIZES, SLOPES, INVERTS, DIRECTIONS OF FLOW, AND EXACT LOCATIONS PRIOR TO BEGINNING WORK.
7. PLANS ARE DIAGRAMMATIC AND ONLY SHOW THE GENERAL ARRANGEMENT OF SYSTEMS AND WORK INCLUDED. THE PLANS DO NOT SHOW EVERY OFFSET AND TRANSITION. CONTRACTOR SHALL FOLLOW PLANS IN LAYING OUT WORK AND COORDINATE WITH OTHER BUILDING SYSTEMS TO VERIFY SPACE IN WHICH WORK IS TO BE INSTALLED.
8. THE PLANS DON'T SHOW ALL EXISTING INSTALLED MECHANICAL SYSTEMS. CONTRACTOR SHALL FIELD VERIFY AND DETERMINE THE BEST POSSIBLE PIPE ROUTING AND INSTALLATION AS TO NOT INTERFERE WITH OTHER MECHANICAL PIPING AND SYSTEMS OPERATION. INSTALL NEW PIPING ACCORDINGLY.
9. THE ORDER IN WHICH THE NEW PIPING IS SHOWN ON THE PLANS IS DIAGRAMMATIC. THE EXACT ORDER AND PIPING PLACEMENT SHALL BE DETERMINED IN THE FIELD BY THE CONTRACTOR, UNLESS NOTED OTHERWISE.
10. DURING CONSTRUCTION, IT MAY BE DETERMINED SOME EXISTING PIPING SYSTEMS HAVE BEEN INSTALLED USING COPPER PIPING. UPON THE DISCOVERY OF SUCH COPPER PIPE SYSTEMS, THE CONTRACTOR SHALL INSPECT PIPING FOR DEFECTS AND STRUCTURAL STABILITY. NOTIFY THE OWNER OF THE CONDITION OF THE EXISTING PIPING. IF SUCH PIPING IS DEEMED UNSALABLE, THE CONTRACTOR SHALL REPLACE.
11. SET DOMESTIC WATER PIPING RISER DIAGRAMS FOR PIPE SIZES NOT SHOWN.

KEY PLAN:

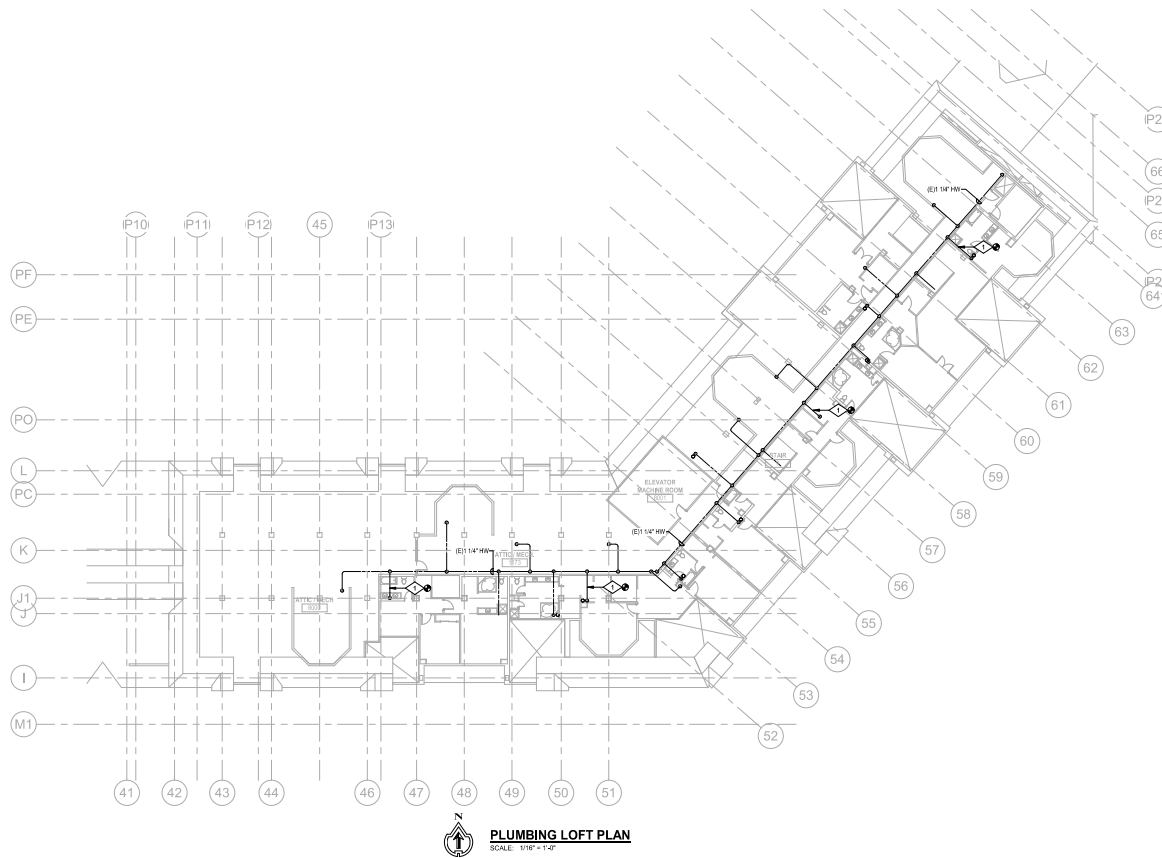
REVIEWED
FOR
CODE
COMPLIANCE
06/20/2023



SCALE: 1/16" = 1'-0"

P216

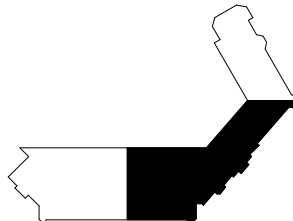
**REVIEWED
FOR
CODE
COMPLIANCE**
06/20/2023



PLUMBING LOFT PLAN
SCALE: 1/8" = 1'-0"

GENERAL NOTES:

- SCOPE OF WORK: REPLACE EXISTING GALVANIZED DOMESTIC WATER PIPING SYSTEMS WITH NEW PIPING.
- CONTRACTOR SHALL DETERMINE CONSTRUCTION PHASING AND COORDINATE CONSTRUCTION SCHEDULE(S) WITH OWNER DURING CONSTRUCTION.
- CONTRACTOR SHALL NOTIFY THE OWNER SCHEDULED DOMESTIC WATER SERVICE SHUT-DOWN AND DURATION THROUGHOUT CONSTRUCTION.
- CONTRACTOR SHALL BE RESPONSIBLE FOR COORDINATING ALL CUTTING AND PATCH WORK WITH GENERAL CONTRACTOR.
- CONTRACTOR SHALL PROVIDE AND X-RAY CONCRETE STRUCTURE PRIOR TO DRIVING PIPE SUPPORTS/HANGERS INTO EXISTING CONCRETE. IF DISCREPANCIES ARE ENCOUNTERED, COORDINATE PIPE HANGERS AND SUPPORTS PLACEMENT WITH THE STRUCTURAL ENGINEER.
- CONTRACTOR SHALL FIELD VERIFY ALL PLUMBING SYSTEMS, PIPE SIZES, SLOPES, INVERTS, DIRECTIONS OF FLOW, AND EXACT LOCATION PRIOR TO BEGINNING WORK.
- PLANS ARE DIAGNOSTIC AND ONLY SHOW THE GENERAL ARRANGEMENT OF SYSTEMS AND WORK INCLUDED. THE PLANS DO NOT SHOW EVERY OFFSET AND TURN. CONTRACTOR SHALL FOLLOW PLANS IN LAYING OUT WORK AND COORDINATE WITH OTHER BUILDING SYSTEMS TO VERIFY SPACE IN WHICH WORK IS TO BE INSTALLED.
- THE PLANS DON'T SHOW ALL EXISTING INSTALLED MECHANICAL SYSTEMS. CONTRACTOR SHALL FIELD VERIFY AND DETERMINE THE BEST POSSIBLE PIPE ROUTING AND INSTALLATION AS TO NOT INTERFERE WITH OTHER MECHANICAL PIPING AND SYSTEMS OPERATION. INSTALL NEW PIPING ACCORDINGLY.
- THE ORDER IN WHICH THE NEW PIPING IS SHOWN ON THE PLANS IS DIAGNOSTIC. THE EXACT ORDER AND PIPING PLACEMENT SHALL BE DETERMINED IN THE FIELD BY THE CONTRACTOR, UNLESS NOTED OTHERWISE.
- DURING CONSTRUCTION, IT MAY BE DETERMINED SOME EXISTING PIPING SYSTEMS HAVE BEEN INSTALLED USING COPPER PIPING. UPON THE DISCOVERY OF SUCH COPPER PIPE SYSTEMS, THE CONTRACTOR SHALL INSPECT PIPING FOR DEFECTS AND STRUCTURAL STABILITY. NOTIFY THE OWNER OF THE CONDITION OF THE EXISTING PIPING. IF SUCH PIPING IS DEEMED UNSALVAGEABLE, THE CONTRACTOR SHALL REPLACE.
- SEE DOMESTIC WATER PIPING RISER DIAGRAMS FOR PIPE SIZES NOT SHOWN.



KEY PLAN:

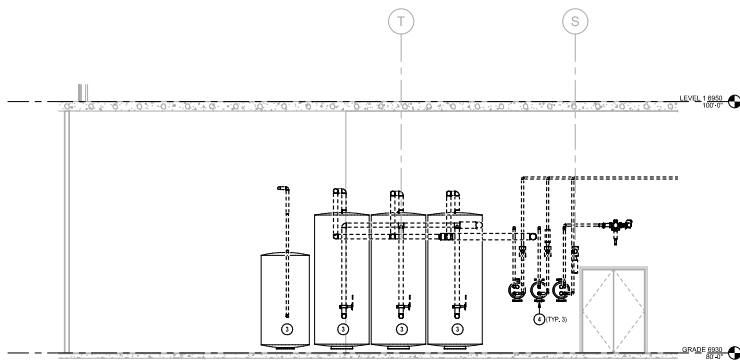
DRAWING NOTES

- AT THE TOP OF PIPE RISER, IN EACH UNIT, REPLACE BALANCING VALVE WITH NEW, FIELD VERIFY. SEE FLOW DIAGRAMS, TYPICAL ALL DWELLING UNITS.

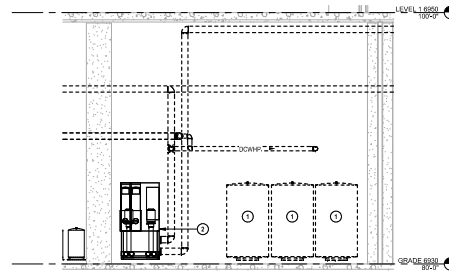
**REVIEWED
FOR
CODE
COMPLIANCE**
06/20/2023



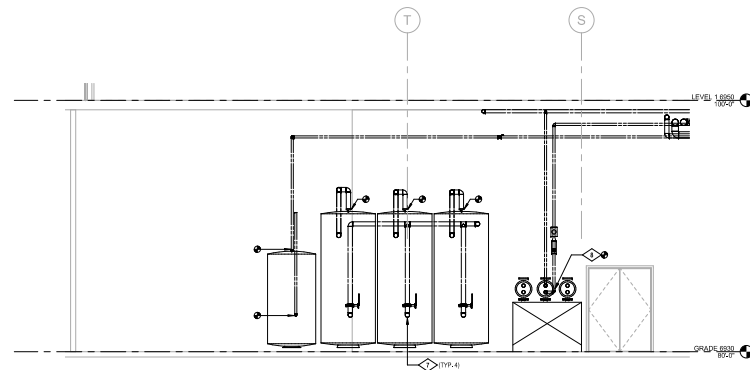
REVIEWED
FOR
CODE
COMPLIANCE
06/20/2023



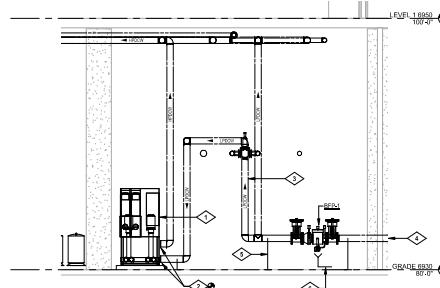
③ DOMESTIC WATER STORAGE TANK SECTION - DEMOLITION WORK
SCALE: 1/4" = 1'-0"



① DOMESTIC WATER AT WATER SOFTENER SECTION - DEMOLITION WORK
SCALE: 1/4" = 1'-0"



② DOMESTIC WATER STORAGE TANK SECTION - NEW WORK
SCALE: 1/4" = 1'-0"



④ DOMESTIC WATER AT WATER SOFTENER SECTION - NEW WORK
SCALE: 1/4" = 1'-0"

GENERAL NOTES:

1. DIMENSIONS SHOWN ARE APPROXIMATE. FIELD VERIFY AND COORDINATE WITH STRUCTURAL ENGINEER.
2. DASHED LINEWORK INDICATES PIPING EQUIPMENT TO BE REMOVED.

DEMOLITION DRAWING NOTES

1. REMOVE EXISTING WATER SOFTENER EQUIPMENT AND PIPING.
2. EXISTING TRIPLEX DOMESTIC WATER BOOSTER PUMP TO REMAIN.
3. REMOVE PIPING CONNECTED TO EXISTING DOMESTIC HOT WATER STORAGE TANKS. REMOVE EXISTING NIPPLE AT CONNECTION.
4. REMOVE PIPING CONNECTED TO EXISTING DOMESTIC HOT WATER HEAT EXCHANGER. REMOVE EXISTING NIPPLE AT CONNECTION.

DRAWING NOTES

1. EXISTING TRIPLEX DOMESTIC WATER PRESSURE BOOSTER PUMP TO REMAIN. FIELD VERIFY.
2. CONNECT NEW 1/2" DOMESTIC COLD WATER TO EXISTING TRIPLEX DOMESTIC WATER PRESSURE BOOSTER PUMP.
3. MAINTAIN ABELOWWAY FOR ACCESS TO EXISTING IRRIGATION MAKEUP WATER SYSTEM REDUCED PRESSURE BACKFLOW PREVENTER. FIELD VERIFY.
4. TO DOMESTIC WATER ENTRY STATION. SEE DIAGRAM.
5. PROVIDE FLOOR MOUNTED SUPPORTS FOR PIPING AND REDUCED PRESSURE BACKFLOW PREVENTER.
6. PIPE REDUCED PRESSURE BACKFLOW PREVENTER DISCHARGE TO FLOOR DRAINING.
7. CONNECT NEW DOMESTIC HW TO EXISTING DOMESTIC HW STORAGE TANK. PROVIDE NEW DIELECTRIC NIPPLE AT TANK CONNECTIONS.
8. CONNECT NEW DOMESTIC HW TO EXISTING DOMESTIC HOT WATER HEAT EXCHANGERS. PROVIDE NEW DIELECTRIC NIPPLE AT HEAT EXCHANGER CONNECTION.



MEP ENGINEERING INC.
64125 Tracy Blvd. Ste 100
General Contractor
info@meper.com www.meper.com



DAVIS
PARTNERSHIP
ARCHITECTS



KLGA, INC.

STEAMBOAT GRAND
PIPING SYSTEM REPLACEMENT
2300 MT WERNER CIR.
STEAMBOAT SPRINGS, CO 80487

ISSUE	DATE
100% SET	07/15/2021
PIPING SET	11/15/2022
REV. 001	01/18/2023
FOR REVIEW	06/20/2023

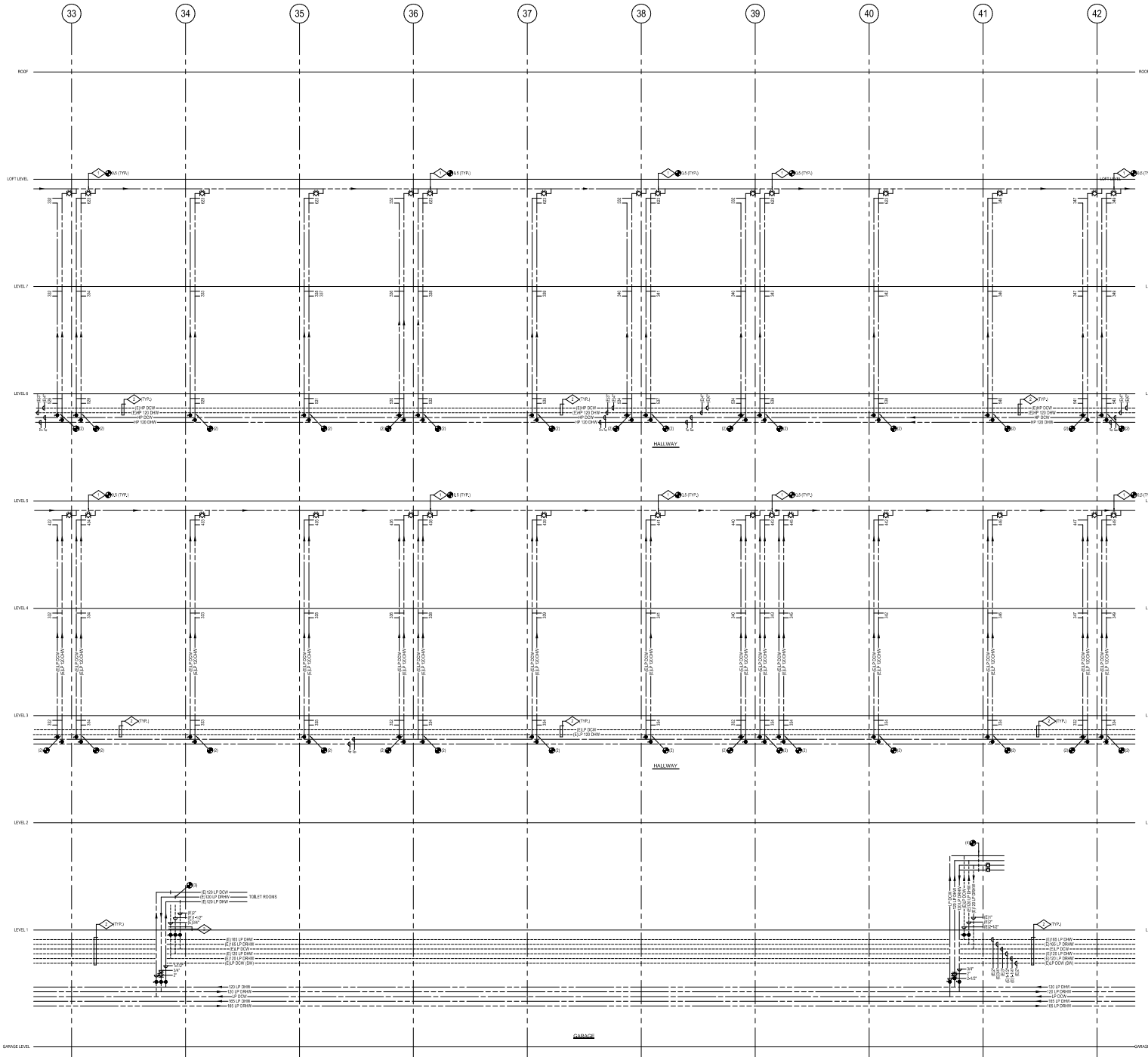
PROJECT #: 21056
DESIGNED: MMH
CHECKED: KVB

MECHANICAL
ELEVATION PLAN



P401

REVIEWED
FOR
CODE
COMPLIANCE
06/20/2023



GENERAL NOTES

1. COLUMNED AND NUMBERED INDICATE COLUMNS ON THE FLOOR PLANS.
2. PIPING OFFSETS IN THE CHIMELING UNITS ARE NOT SHOWN.
3. ROOM NUMBERS INDICATED ARE TAKEN FROM EXISTING DRAWINGS, NUMBERS MAY VARY IN THE FIELD.
4. ACTUAL PIPING LOCATIONS AND INSTALLATION MAY BE DIFFERENT IN THE FIELD, HOUSE NEW PIPING IS SHOWN, EXISTING PIPING IS SHOWN WITH A DASHED LINE, THE NECESSARY FIELD INDICATIONS TO CORRELATE AND APPROXIMATE PIPING SYSTEM.
5. DASHED LINE WORK INDICATES PIPING TO BE REMOVED.

DRAWING NOTES

1. PROVIDE NEW 1/2" CIRCUIT SOLVER SELF-BALANCING VALVE, PRESET TO OPEN NOTES.
2. EXISTING PIPING TO BE REMOVED, SEE PLANS, FIELD VERIFY.



MEP ENGINEERING INC.
44125 Hwy 104, Ste 100
General Contractor
info@mepegi.com www.mepegi.com



DAVIS
PANKERSHIP
ARCHITECTS
1000 14th St, Suite 100
Boulder, CO 80502
303.440.1234
info@davispankership.com



KLGA
K.L.A.A. INC.

STEAMBOAT GRAND
PIPING SYSTEM REPLACEMENT
2300 MT WERNER CIR,
STEAMBOAT SPRINGS, CO 80487

ISSUE	DATE
ISSUE SET	07/15/2021
PIPING SET	11/15/2022
ISSUE SET	01/18/2023
FOR REVIEW	06/20/2023

PROJECT # 21056
DESIGNED: MMW
CHECKED: KWB

PLUMBING RISER
DIAGRAMS

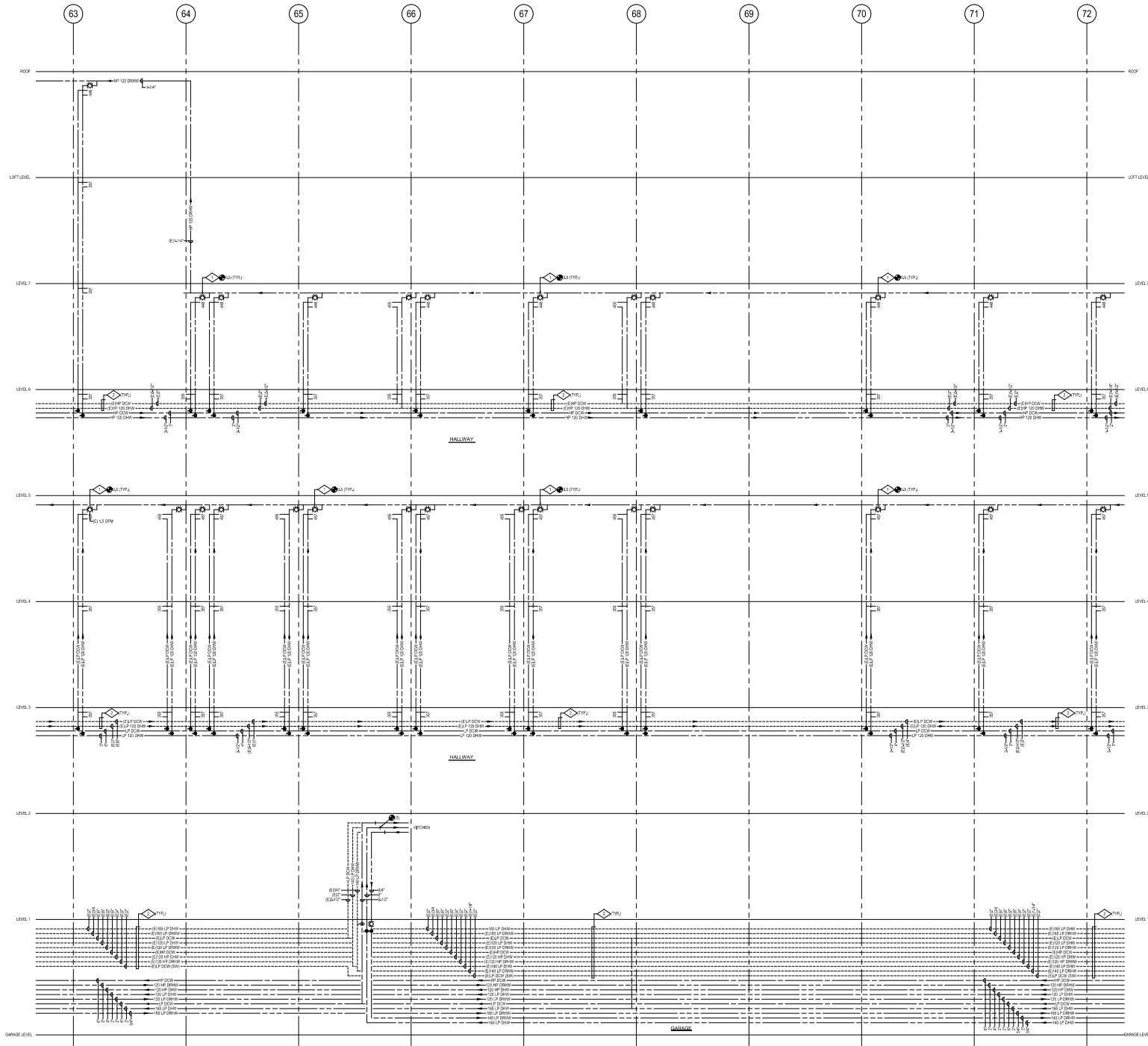


REVIEWED
FOR
CODE
COMPLIANCE
06/20/2023

P501

PIPING RISER DIAGRAM DOMESTIC WATER - DEMOLITION

SCALE: N/A



GENERAL NOTES

1. COLUMN LINES AND NUMBERS INDICATE COLUMN LINES ON THE FLOOR PLANS.
2. PIPING OFFSETS BETWEEN THE DWELLING UNITS ARE NOT SHOWN.
3. ROOM NUMBERS INDICATED ARE TAKEN FROM EXISTING DRAWINGS. NUMBERS MAY VARY IN THE FIELDS.
4. ACTUAL PIPE SIZING, SCHEDS AND INSTALLATION MAY BE DIFFERENT IN THE FIELD. VERIFY THE PIPING IN THE FIELD. LOCATION AND EXISTING PIPING TO BE REMOVED. CONTRACTOR SHALL HAVE THE NECESSARY ADJUSTMENTS FOR A COMPLETE AND OPERATIONAL PIPING SYSTEM.
5. DASHED LINE WORK INDICATES PIPING TO BE REMOVED.

DRAWING NOTES

1. PROVIDE NEW 1/2" CRISP SOLVER RELF BALANCING VALVE, PRESET TO OPEN/CLOSE.
2. EXISTING PIPING TO BE REMOVED, SEE PLANS, FIELD VERIFY.



**STEAMBOAT GRAND
PIPING SYSTEM REPLACEMENT**
2300 MT WERNER CIR,
STEAMBOAT SPRINGS, CO 80487

ISSUE	DATE
ISSUE SET	07/15/2021
PIPING SET	11/15/2022
ISSUE SET	01/15/2023
FOR REVIEW	06/20/2023

PROJECT # 21056
DESIGNED: MMG
CHECKED: KVB

PLUMBING RISER
DIAGRAMS



**REVIEWED
FOR
CODE
COMPLIANCE**
06/20/2023

P504

PIPING RISER DIAGRAM DOMESTIC WATER - DEMOLITION
SCALE: N/A

