

SHEET NOTES

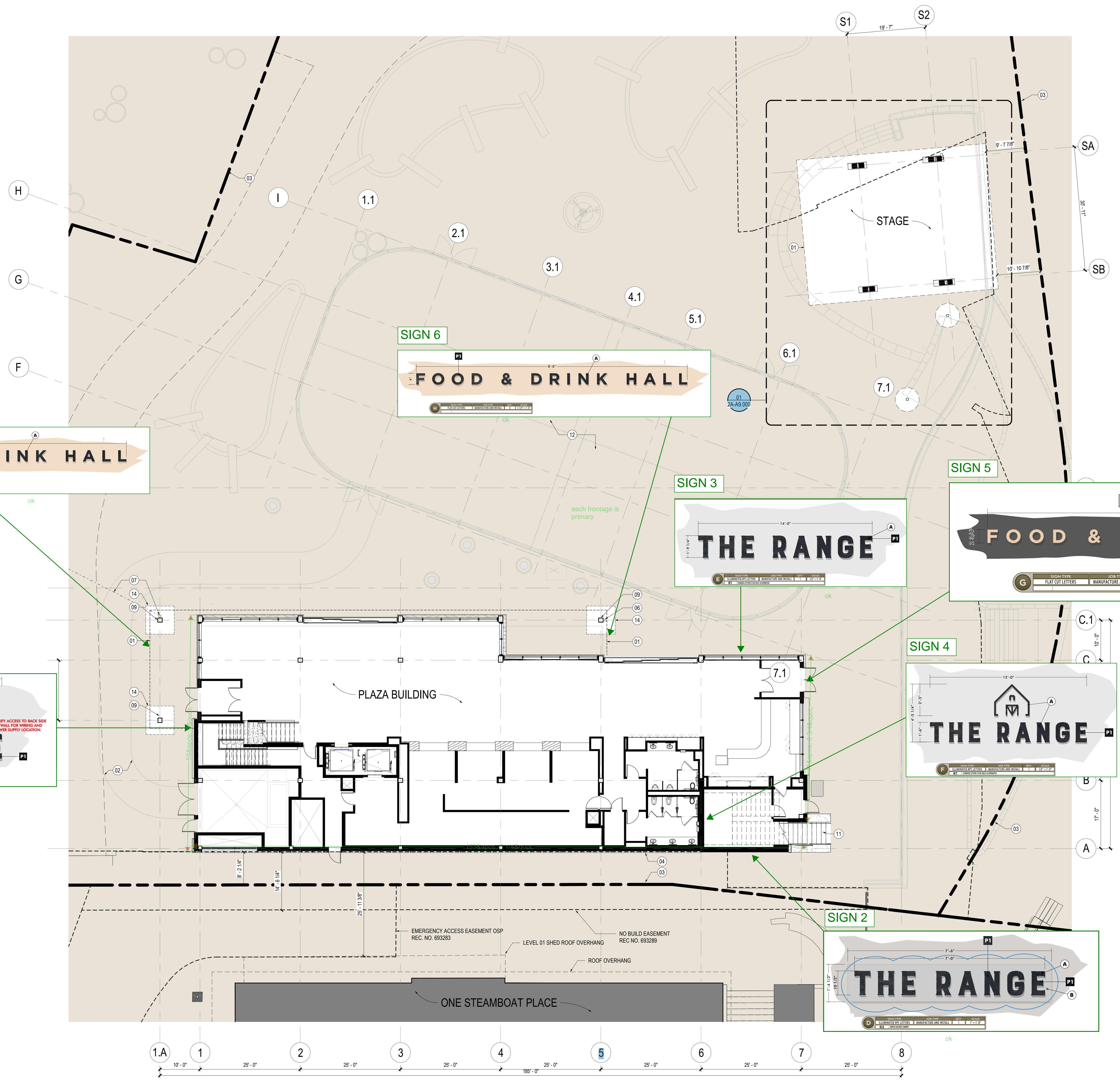
- 01 DASHED LINE REPRESENTS EXTENTS OF ROOF OVERHANG ABOVE
- 02 ZAMBONI ACCESS PATH TO ICE RINK, RE: LANDSCAPE
- 03 PROPERTY LINE, RE: CIVIL
- 04 EXISTING EASEMENT, RE: CIVIL
- 06 DOWNSPOUT CONNECTION W/ TRANSITION FITTING, EXTENDS THROUGH PAVEMENT ASSEMBLY, ROUTE AROUND BREAKS AND TO CONNECT TO PROMENADE STORM SYSTEM, RE: CIVIL/PLUMBING
- 07 DOWNSPOUT CONNECTION W/ TRANSITION FITTING, EXTENDS THROUGH PAVEMENT ASSEMBLY AND CONNECTS TO PLAZA STORMWATER DRAIN, RE: CIVIL/PLUMBING
- 09 NEW COLUMN ON GRADE, RE: STRUCT
- 11 NEW EXTERIOR STAIR TO L2 EXTERIOR PATIO ABOVE
- 12 EXISTING PLAZA, NO NEW SCOPE IN CURRENT PACKAGE
- 14 REMOVE EXISTING PAVEMENT & SNOWMELT ASSEMBLY AS REQ TO INSTALL NEW WORK. REINSTALL AND RECONNECT SNOWMELT AND PAVEMENT ASSEMBLY TO MATCH SURROUNDING AREA AND PATTERN PER BP3 PHASE 1 DRAWINGS AND DETAILS

PHASE / PARTITION LEGEND

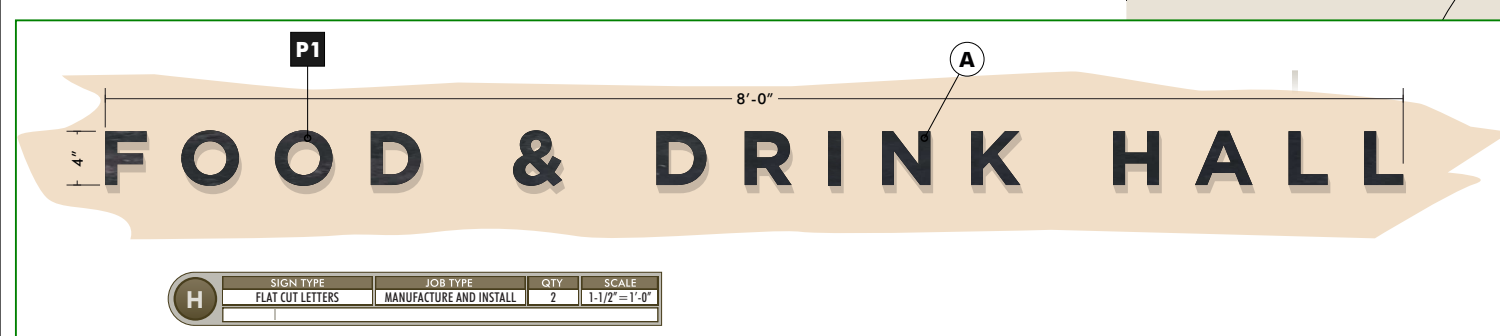
- EXISTING PARTITION
- NEW PARTITION
- DEMOLISHED PARTITION
- 1 HR RATED PARTITION
- EXISTING WORK COMPLETED W/ PROMENADE BUILDING, NOT IN CURRENT SCOPE
- EXISTING CONDITION OUTSIDE OF SCOPE (OTHER PROPERTY)

SITE PLAN GENERAL NOTES

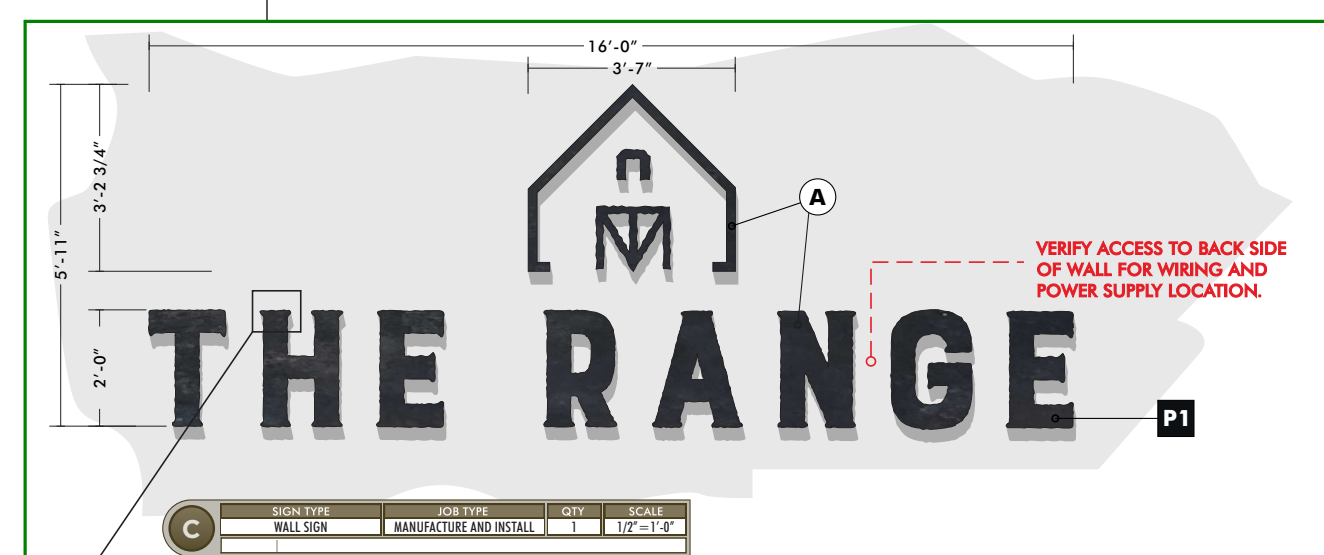
ok
ok



SIGN 7



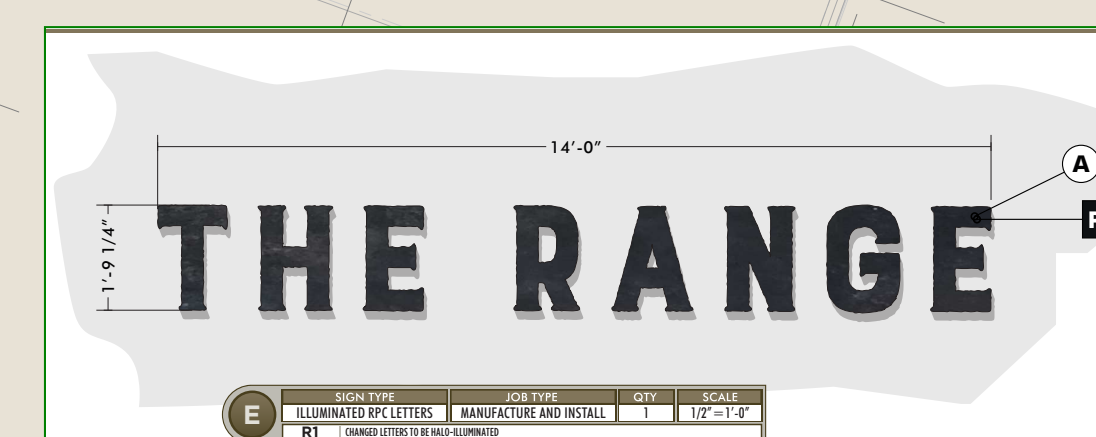
SIGN 1



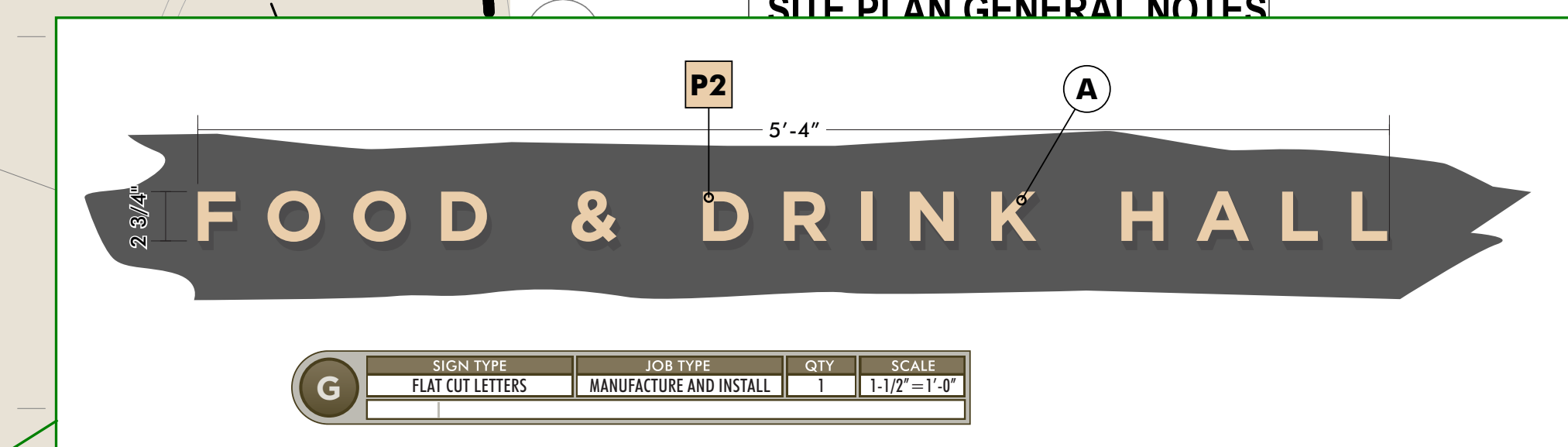
SIGN 6



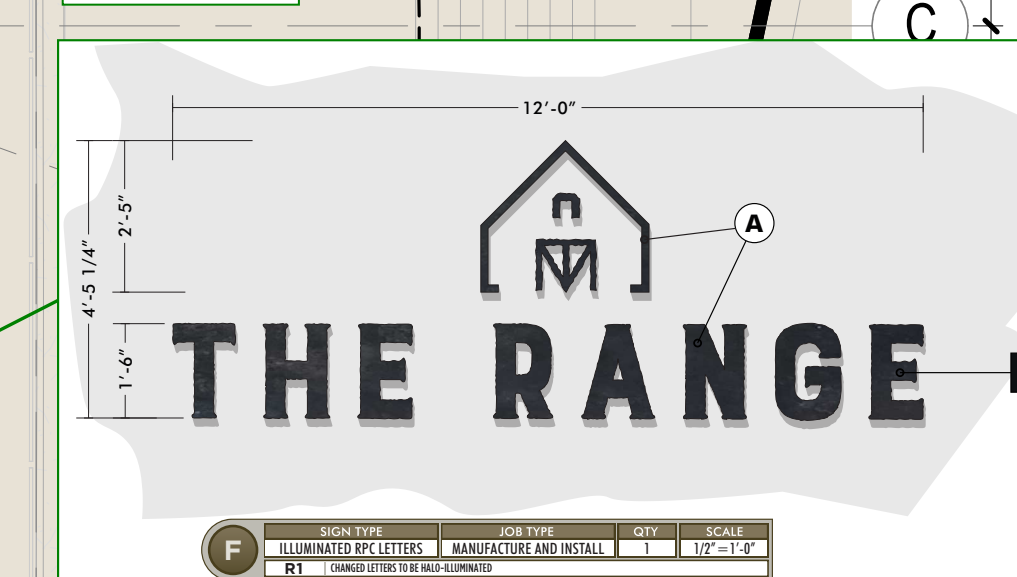
SIGN 3



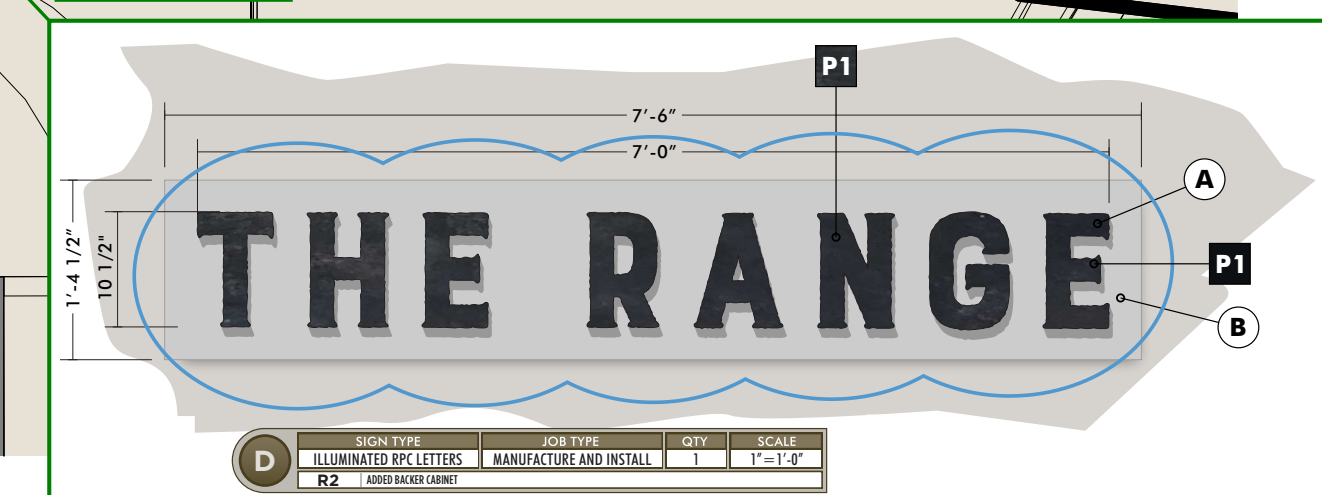
SIGN 5



SIGN 4



SIGN 2



KEY PLAN



Seal / Signature



Project Name

SSRC | BASE AREA IMPROVEMENTS

Project Number

003.7835.000

Description

ARCHITECTURAL SITE PLAN

Scale

As indicated

Ref North

2A-A1.100