

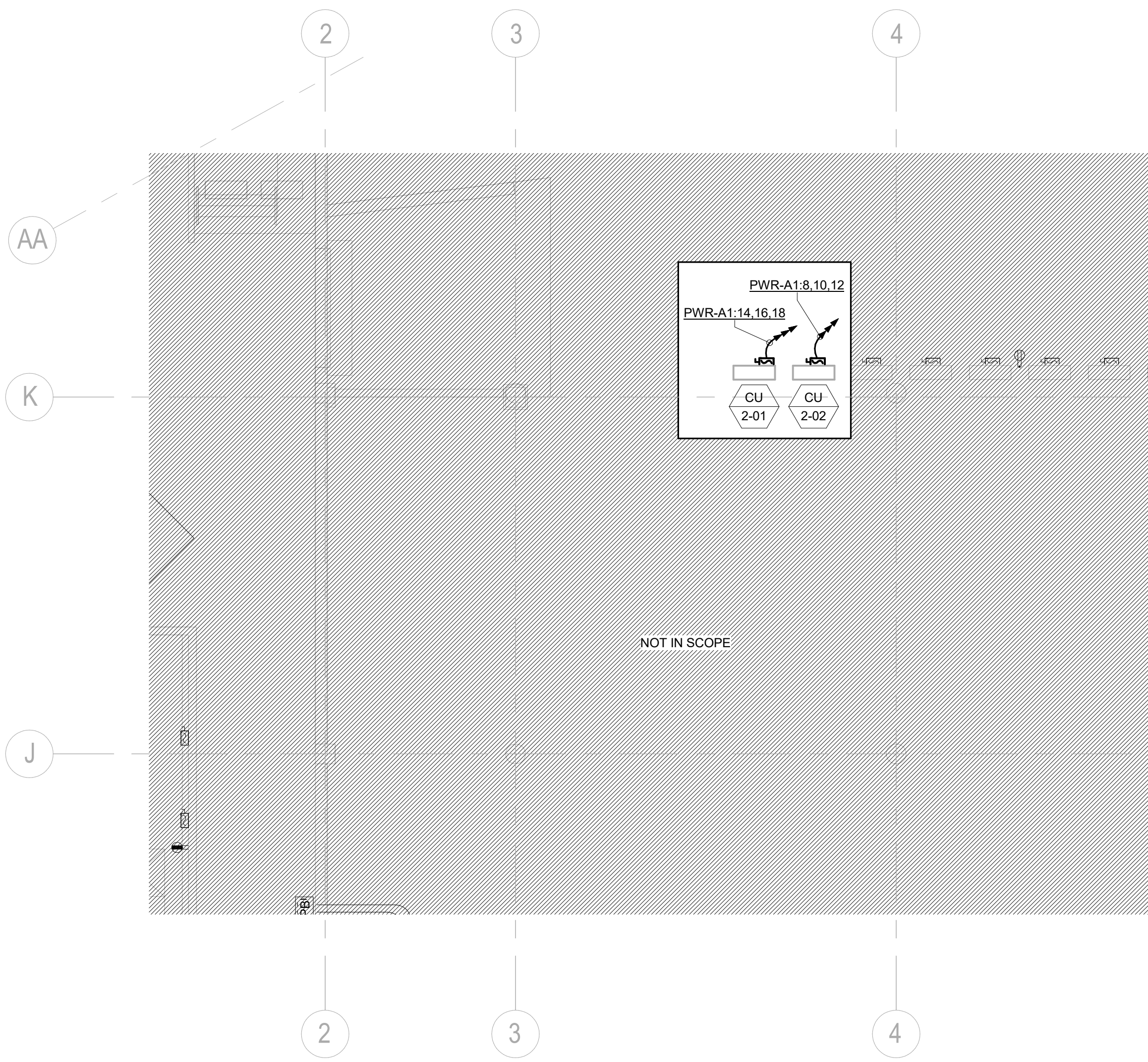
MDS									
LOCATION:			VOLTAGE: 480/277 Wye				BUS: 2000 A		
SUPPLY FROM: UTILITY TRANSFORMER			SCCR: RE:ONE-LINE				MAIN: 2000 A - MCB		
LOADS SUMMARY	EXIST	LTG	RECPT	MOTOR	MISC.	KITCHEN	ELECTRIC HEAT	EV CHARGE	Load
(EX) MECH IIA	207845	1074	9380	110494	42660	2688	8182		382323 VA 460 A
(EX) MECH IIB	92455	6193	35820	8865	13420	10824	8094		177870 VA 214 A
(EX) BRH		378	1080	213528	1750		20785		237521 VA 286 A
GWH	55372	12158	17320	63203	2120		23820		174353 VA 210 A
CONNECTED TOTALS (V-A)	355672	19803	63600	396090	59960	13512	60881		972068 VA 1169 A
DIVERSITY FACTORS	125%	100%	58%	107%	100%	65%	100%		
DEMAND TOTAL (V-A)	444590	19803	36800	422277	59950	8783	60881		1055644 VA 1270 A

NOTE:
THE EXISTING PANEL 'GWH' (ABOVE) IS INDICATED ABOVE TO JUSTIFY LOAD FOR NEW SCOPE ASSOCIATED WITH THIS PROJECT. THIS PANEL IS EXISTING, AND NO ADDITIOAL LOAD IS BEING ADDED OTHER THAN THAT SHOWN ON GWH (RIGHT).

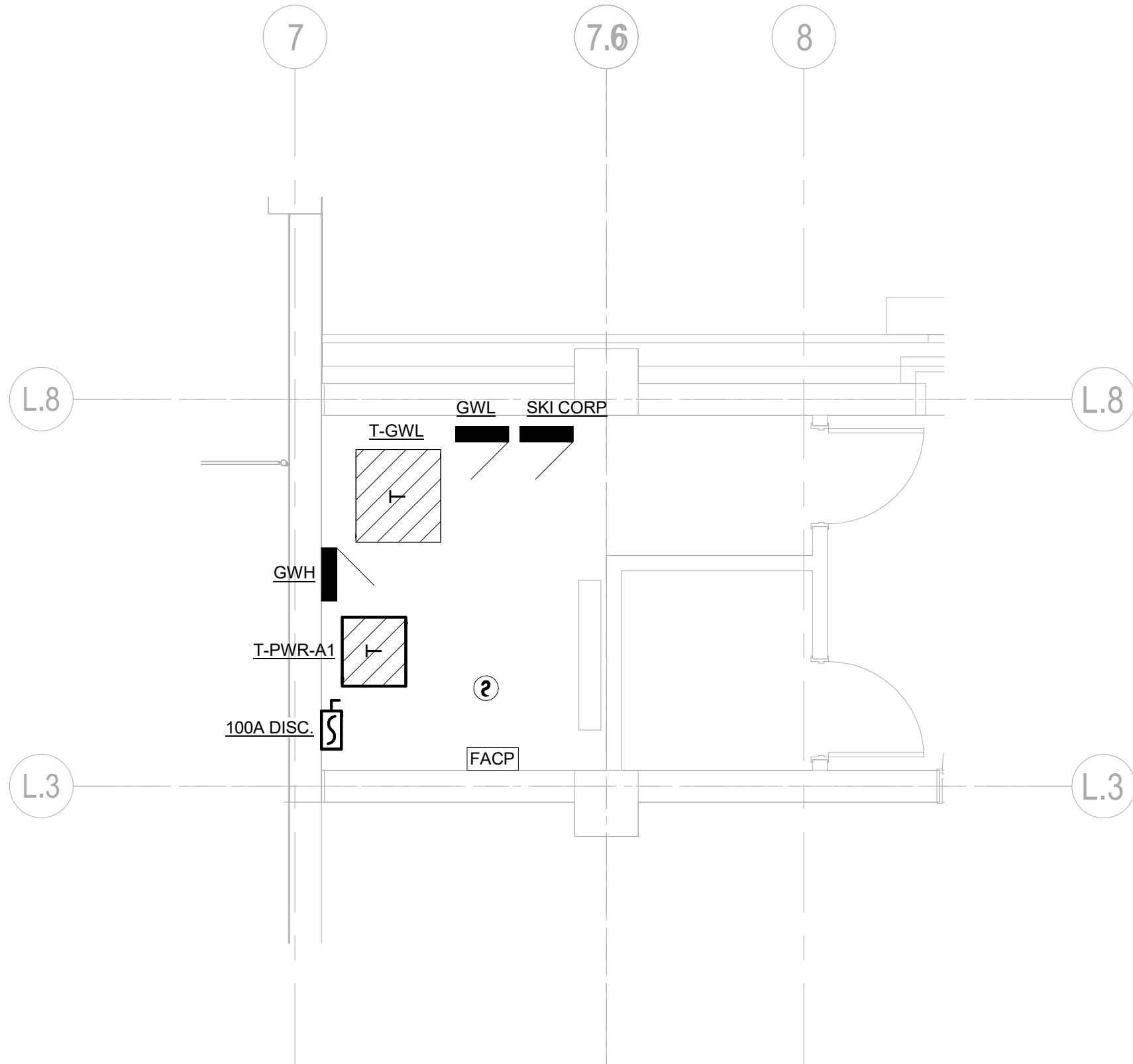
Steamboat Base Village Redevelopment										ME Engineers Inc.										PANEL		GWH	
480/277 Wye										BUS: 400 A										ENCLOSURE:		Type 1	
3 Phase, 4 Wire + Gnd. 60Hz.										MAINS: 400 A - MCB										MOUNTING:		Surface	
SCCR:										GROUND BUS: Copper										FED FROM:		MDS	
NOTES:										OPTIONS:										LEVEL:		PLAZA - LEVEL 01	
1. EXISTING BREAKER										LOCATION:										ELECTRICAL 14		ISSUE DATE:	
2. NEW BREAKER ASSOCIATED WITH THIS PROJECT SCOPE.										REFER TO DETAILS AND SPECIFICATION SECTION FOR PANELBOARD LAMINATED PLAQUE REQUIREMENTS.													
N	LC	DESCRIPTION								P	OC	CKT	A	B	C	CKT	OC	P	DESCRIPTION	LC	N		
1	M	ESCALATOR #1								3	30	1	4157	321		2	20	1	GOLD WALK SITE LIGHTING (ZONES G.S.2 - G.S.5)	L	1		
--	--	--								--	--	--	3		4157	779		4	20	1	STAR AND ESCALATOR LIGHTING	L	1
--	--	--								--	--	--	5		4157	1920		6	20	1	ESCALATOR CANOPY HEAT TRACE	X	1
1	M	ESCALATOR #2								3	30	7	4157	656				8	20	1	ART WALL & BRAND WALL DMX LTG	L	1
--	--	--								--	--	--	9		4157	0		10	20	1	SPARE	--	1
--	--	--								--	--	--	11		4157	0		12	20	1	SPARE	--	1
1	--	SPARE								1	20	13	0	0			14	20	1	SPARE	--	1	
1	--	SPARE								1	20	15		0	0	0	16	20	1	SPARE	--	1	
1	--	SPARE								1	20	17			0	0	18	20	1	SPARE	--	1	
1	M	ESP-1								3	20	19	942	0		20	20	1	SPARE	--	1		
--	--	--								--	--	--	21		942	0		22	20	1	SPARE	--	1
--	--	--								--	--	--	23			942	0	24	20	1	SPARE	--	1
1	--	SPARE								1	20	25	0	0			26	20	1	SPARE	--	1	
1	--	SPARE								1	20	27		0	0	0	28	20	1	SPARE	--	1	
1	--	SPARE								1	20	29				0	0	30	20	1	SPARE	--	1
1	--	SPARE								1	20	31	0	14022			32	70	3	T-PWR-A1	L	2	
1	--	SPARE								1	20	33		0	9112		34	--	--	--	--	--	
1	--	SPARE								1	20	35			0	11923	36	--	--	--	--	--	
1	--	SPARE								1	20	37	0	34970		38	225	3	T-GWL	L	1		
1	--	SPARE								1	20	39		0	36940		40	--	--	--	--	--	
1	--	SPARE								1	20	41			0	35944	42	--	--	--	--	--	
PER PHASE VA WITH DOWNSTREAM LOADS										LOAD SUMMARY WITH DOWNSTREAM LOADS INCLUDED													
PHASE	A	B	C	TOTALS	CATEGORY					CONNECTED	FACTOR	CALC. V-A	AMPS @ 480/277 Wye										
CALC	63742	60365	63547	187654	LIGHTING					12158	100%	12158	15										
CNNCTD	59224	56086	59042	174353	RECEPTACLE					17320	79%	13860	16										
					MOTOR					63203	105%	66321	80										
					MISCELLANEOUS					2120	100%	2120	3										
					KITCHEN																		
					ELECTRIC HEAT					23820	100%	23820	29										
					EV CHARGING																		
					EXISTING					55372	125%	69215	83										
					TOTAL					174353		187654	226										
CONDUCTOR COLORS (EC TO LABEL IN PANEL)																							
288Y/120										480Y/277													
A		BLACK								BROWN													
B		RED								ORANGE													
C		BLUE								YELLOW													
N		WHITE								WHITE/GRAY STRIPE													
G		GREEN								GREEN													

NOTE:
THE EXISTING PANEL 'GWH' (ABOVE) IS INDICATED ABOVE TO JUSTIFY LOAD FOR NEW SCOPE ASSOCIATED WITH THIS PROJECT. THIS PANEL IS EXISTING, AND THE ONLY NEW SCOPE ASSOCIATED WITH THIS PANEL IS THE 3-POLE BREAKER FEEDING TRANSFORMER 'T-PWR-A1'.

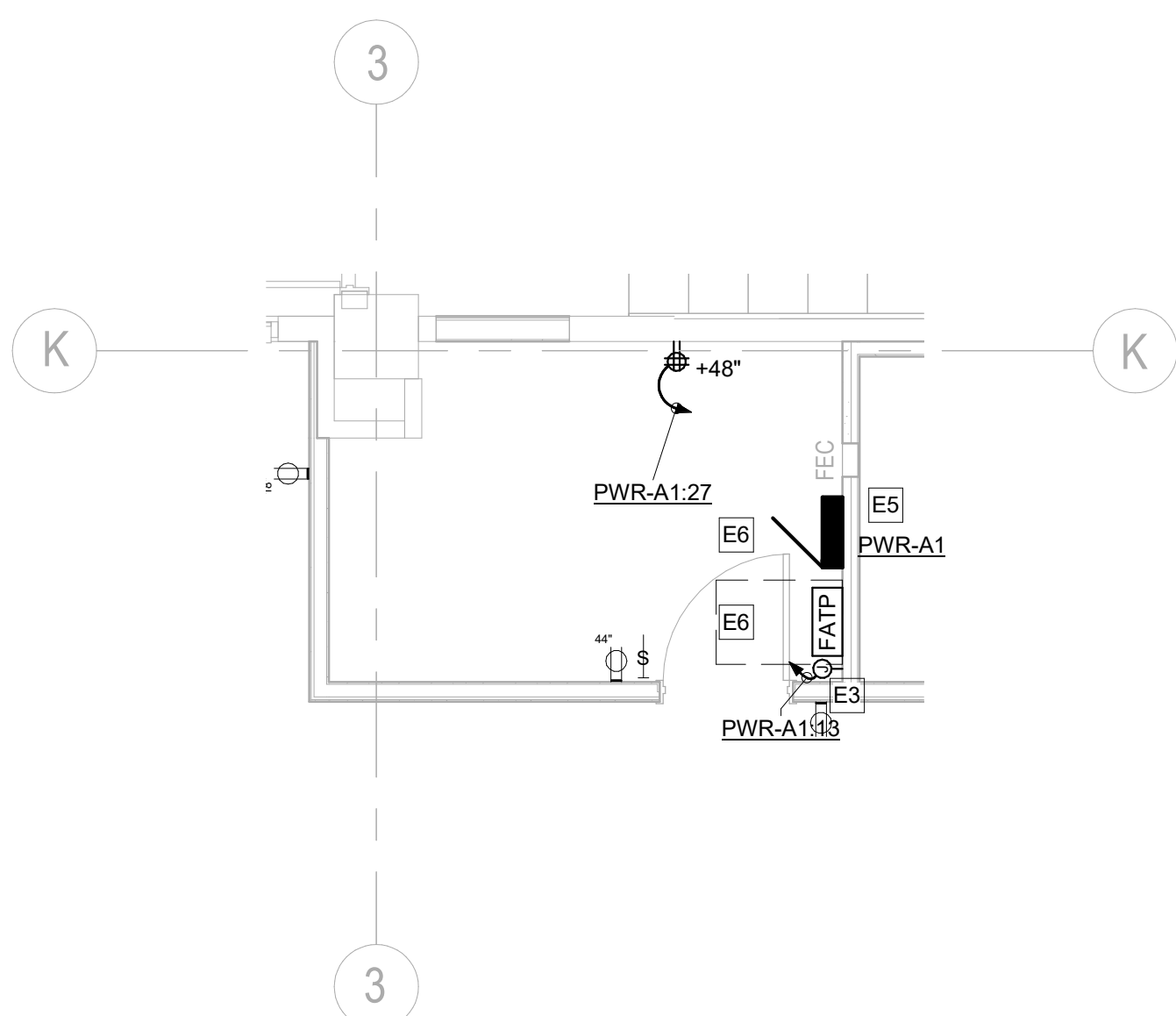
Steamboat Base Village Redevelopment										ME Engineers Inc.										PANEL		PWR-A1	
120/208 Wye										BUS: 150 A										ENCLOSURE:		Type 1	
3 Phase, 4 Wire + Gnd. 60Hz.										MAINS: 150 A - MCB										MOUNTING:		Surface	
SCCR:										GROUND BAR: Copper										FED FROM:		T-PWR-A1	
NOTES:										OPTIONS:										LEVEL:		LEVEL 03	
1. PROVIDE RED FIRE ALARM BREAKER WITH LOCKOUT PROVISION.																				LOCATION:		NEW RETAIL 17	
																				ISSUE DATE:			
REFER TO DETAILS AND SPECIFICATION SECTION FOR PANELBOARD LAMINATED PLAQUE REQUIREMENTS.																		LC		N			
N	LC	DESCRIPTION								P	OC	CKT	A	B	C	CKT	OC	P	DESCRIPTION	LC	N		
R		GENERAL RECEPITS TENANT 2B.301								1	20	1	1080	1921		2	20	3	EDH 2-01	M	--		
R		SHOW WINDOW RECEPTACLES								1	20	3		360	1921		4	--	--	--	--		
M		MOTORIZED DAMPERS BLDG. A RETAIL								1	20	5			360	1921	6	--	--	--	--		
--	--	-- SF 2-01								--	--	7	372	1921				8	20	3	CU 2-02	--	--
R		GENERAL RECEPITS TENANT 2B.301								1	20	9		900	1921		10	--	--	--	--		
R		SHOW WINDOW RECEPTACLES								1	20	11			540	1921	12	--	--	--	--		
1	X	FIRE ALARM TRANSDUCER PANEL								1	20	13	200	1921		14	20	3	CU 2-01	M	--		
L		EM LTG - L20 MONOPOINT LTG								1	20	15		120	1921		16	--	--	--	--		
L		NM LTG - STORAGE & CHANGING ROOM LTG								1	20	17			81	1921	18	--	--	--	--		
L		TRACK LTG - ZONE A								1	20	19	1200	228		20	20	2	FCU 2-02	M	--		
L		TRACK LTG - ZONE B								1	20	21		1200	228		22	--	--	--	--		
L		TRACK LTG - ZONE C								1	20	23			1200	228	24	20	2	FCU 2-01	M	--	
L		TRACK LTG - ZONE A								1	20	25	1200	228		26	--	--	--	--	--		
L		STORAGE ROOM QUAD RECEP								2	50	27		360		28	--	--	--	--	--		
E		EWH-1 (BLDG A)								2	50	29			3750	0	30	20	1	SPARE	--	--	
--	--	--								--	--	31	3750	0			32	20	1	SPARE	--	--	
M		EF 2-01 (BLDG A)								1	20	33		180	0		34	20	1	SPARE	--	--	
--	--	--								--	--	35			0	0	36	20	1	SPARE	--	--	
--	--	--								--	--	37	0	0			38	20	1	SPARE	--	--	
--	--	--								--	--	39		0	0		40	20	1	SPARE	--	--	
--	--	--								--	--	41			0	0	42	20	1	SPARE	--	--	
PER PHASE VA WITH DOWNSTREAM LOADS										LOAD SUMMARY WITH DOWNSTREAM LOADS INCLUDED										CALC. V-A		AMPS @ 120/208 Wye	
PHASE		A		B		C		TOTALS		CATEGORY		CONNECTED		FACTOR									
CALC		14586		9467		12413		36498		LIGHTING		5001		100%		5001				14			
CNCTD		14032		9112		11103		35057		RECEPTACLE		3300		100%		3300				9			
										MOTOR		18756		100%		20197				56			
										MISCELLANEOUS		200		100%		200				1			
										KITCHEN		7500		100%		7500				21			
										ELECTRIC HEAT													
										EXISTING													
										CHARGING													
A	B	28BY126								48BY277													
B		BLACK								BROWN													
R		RED								ORANGE													
B		BLUE								YELLOW													
N	B	WHITE								WHITE/GRAY STRIPE													
G	C	GREEN								GREEN													
		TOTAL		35057		36498		101															



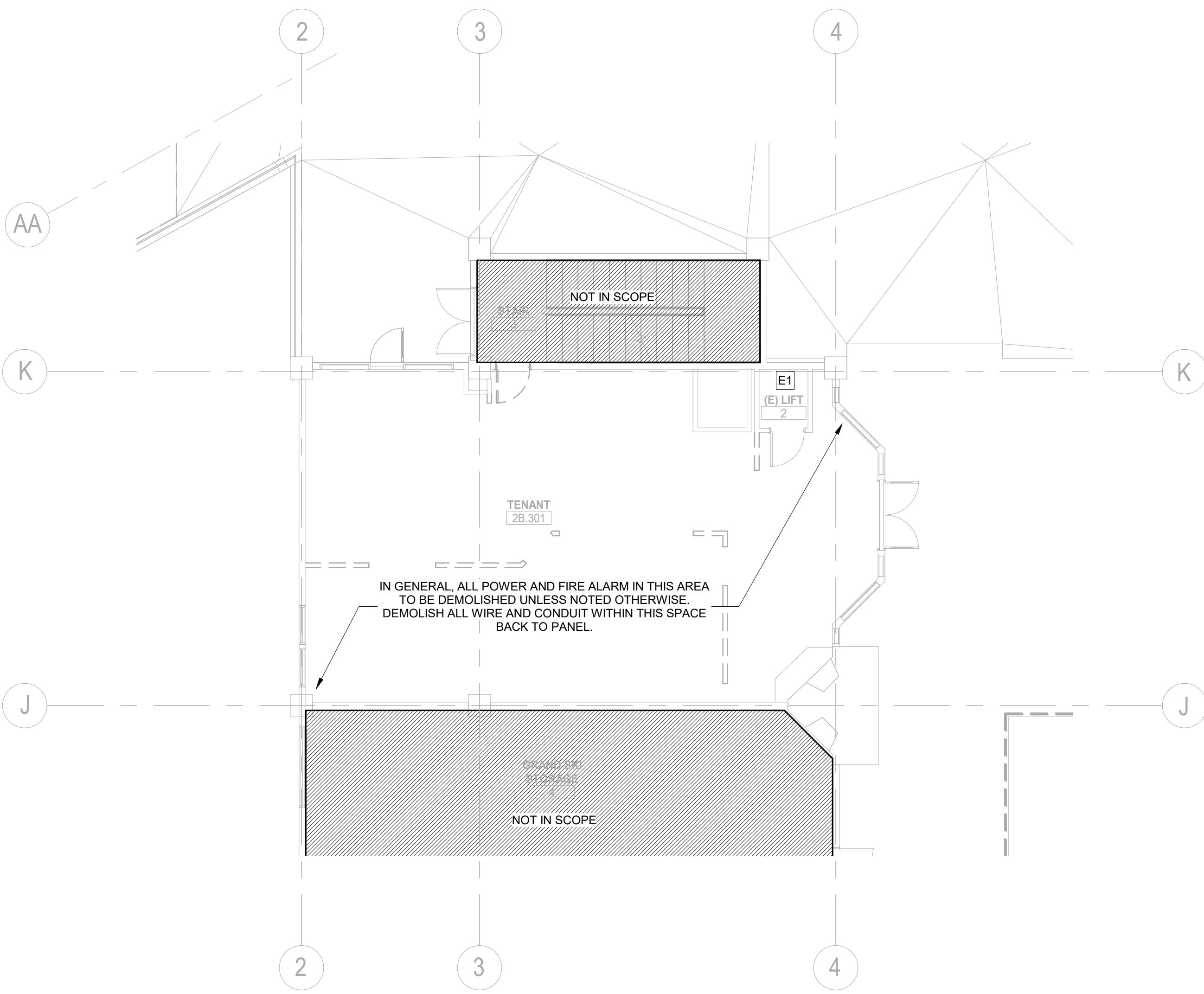
5 ELECTRICAL PLAN - PARKING GARAGE
SCALE: 1/8" = 1'-0"



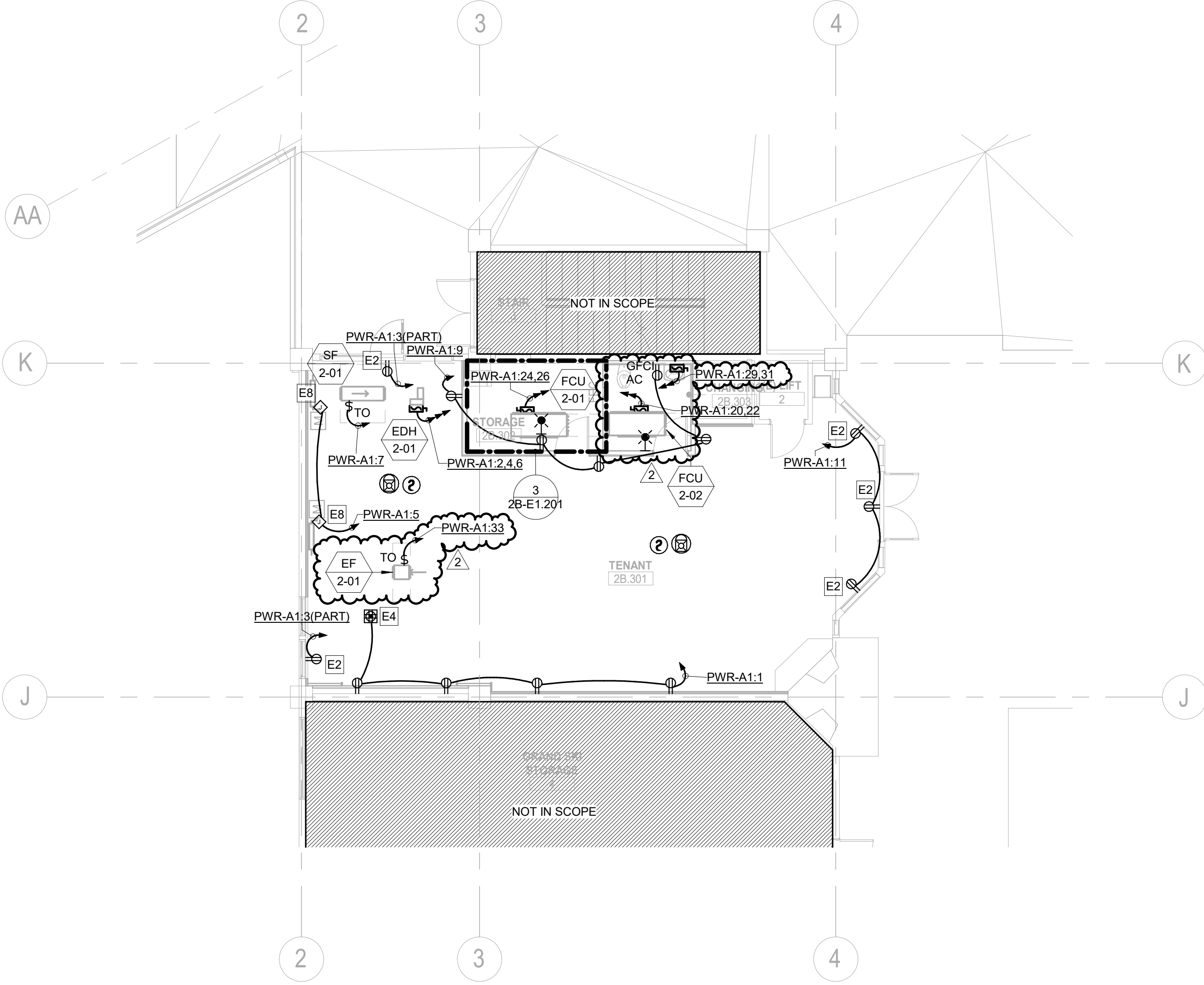
4 ENLARGED GOLD WALK ELECTRICAL ROOM
SCALE: 1/4" = 1'-0"



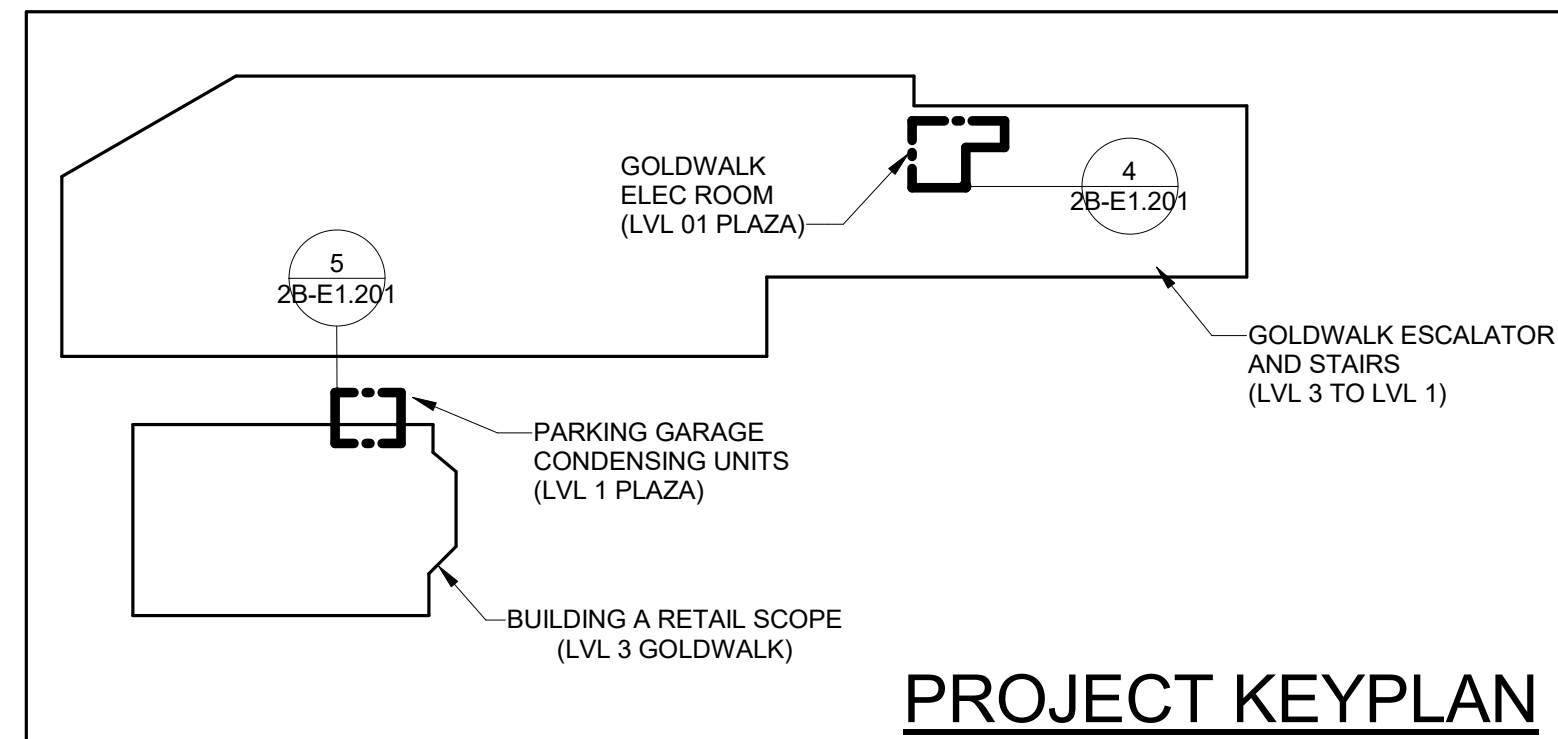
3 ENLARGED ELECTRICAL PLAN STORAGE 2B.302
SCALE: 1/4" = 1'-0"



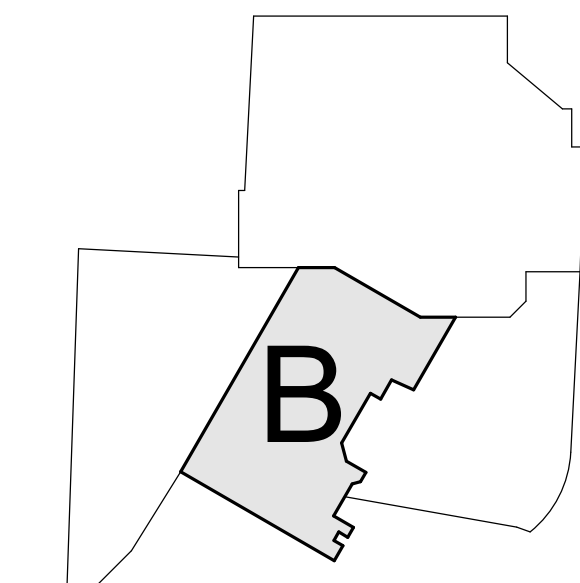
1 ELECTRICAL DEMOLITION PLAN - LEVEL 03
SCALE: 1/8" = 1'-0"



2 ELECTRICAL PLAN - LEVEL 03
SCALE: 1/8" = 1'-0"



KEY PLAN



Scale
As indicated

Gensler

1225 17th Street
Suite 150
Denver, CO 80202
United States
Tel 303.595.8585
Fax 303.825.6823

me
engineers

14143 Denver West Pkwy
Suite 300
Golden, CO
United States
Tel 303.421.6555

REVIEWED
FOR
CODE
COMPLIANCE
09/23/2022

Date	Description
05/20/2022	ISSUE FOR CONSTRUCTION
06/27/2022	BULLETIN 1

Seal / Signature



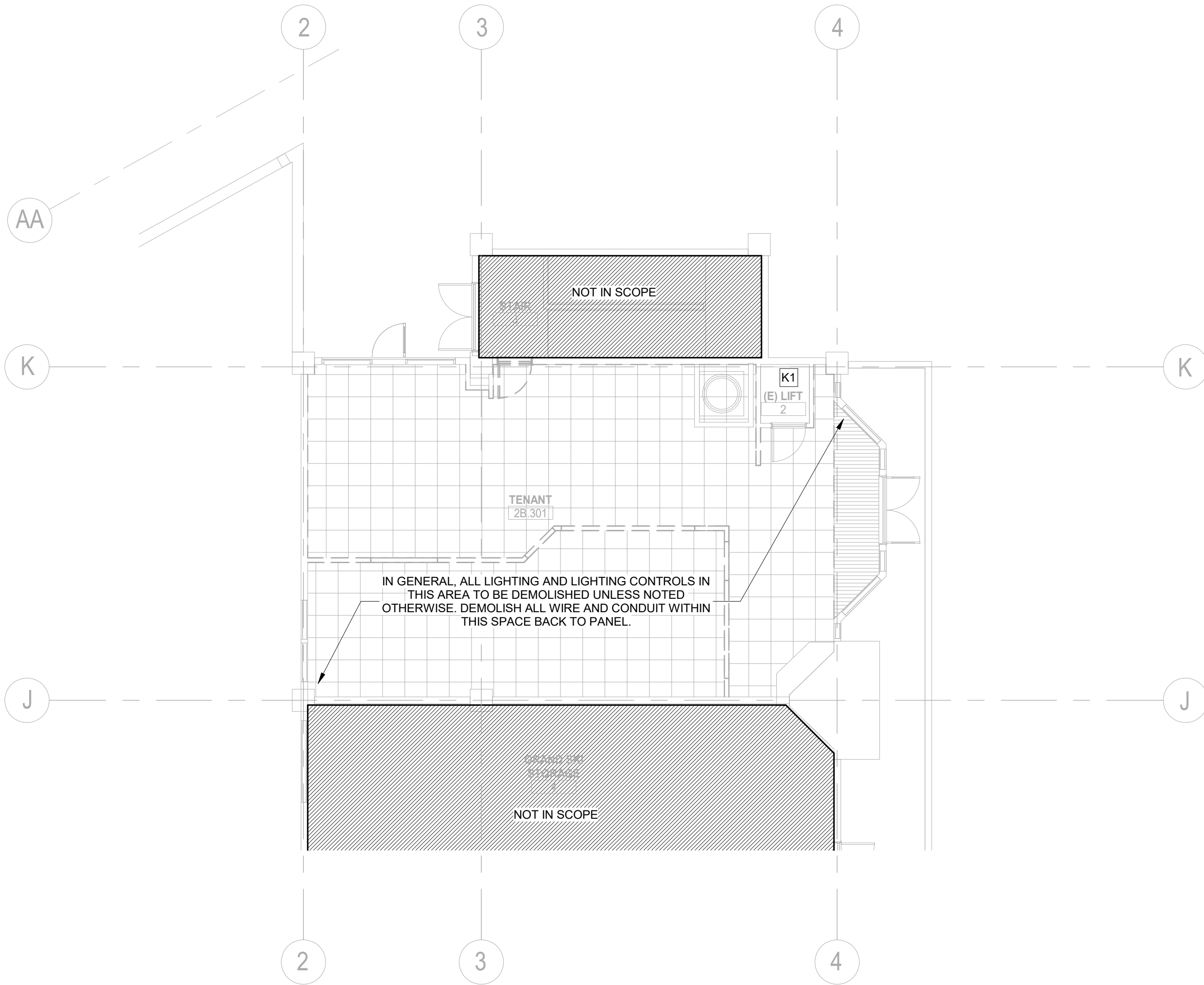
Project Name
Steamboat Base Village
Redevelopment

Project Number
003.7835.000

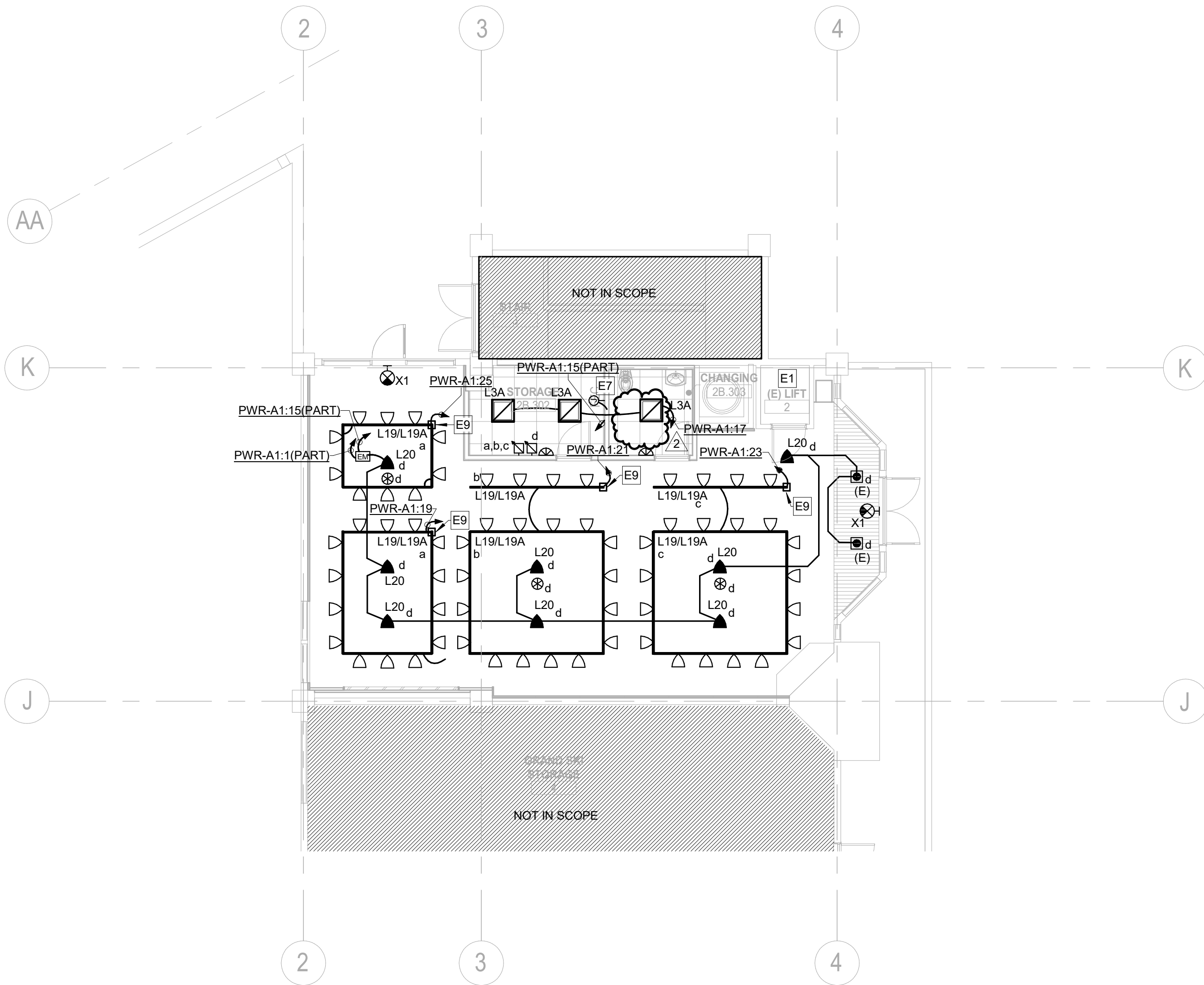
Description
ELECTRICAL PLAN - LEVEL 03

Scale
As indicated

2B-E1.201



1 LIGHTING DEMOLITION PLAN - LEVEL 03
SCALE: 1/8" = 1'-0"



2 LIGHTING PLAN - LEVEL 03
SCALE: 1/8" = 1'-0"

GENERAL NOTES:

1. ALL EXPOSED CONDUIT SHALL BE ROUTED PERPENDICULAR, PARALLEL, AND TIGHT TO COLUMNS AND BEAMS. ALL EXPOSED CONDUIT ROUTING SHALL BE COORDINATED WITH THE ARCHITECT PRIOR TO INSTALLATION AND INSTALLED IN A NEAT AND CONSISTENT MANNER. NO ADDITIONAL COST TO OWNER WILL BE ALLOWED FOR RELOCATING CONDUIT DUE TO THE LACK OF COORDINATION WITH ARCHITECT. ALL SURFACE MOUNTED CONDUIT WHERE EXPOSED TO PUBLIC AREAS SHALL BE PAINTED. PAINT COLOR TO BE DETERMINED BY THE ARCHITECT.
2. CONTRACTOR SHALL PROVIDE SHOP DRAWINGS INDICATING ALL PROPOSED EXPOSED CONDUIT ROUTING.
3. ELECTRICAL CONTRACTOR TO COORDINATE WITH MECHANICAL CONTRACTOR AND CABLETRAY/IT CONTRACTOR FOR PLACEMENT OF FIXTURES WITHIN ROOMS.
4. ALL LIGHT FIXTURES CALLED OUT FOR DEMOLITION SHALL BE SALVAGED AND TURNED OVER TO THE OWNER FOR EVALUATION AND RETAINAGE. IF OWNER DOES NOT ELECT TO RETAIN LIGHT FIXTURES, CONTRACTOR IS RESPONSIBLE FOR PROPER DISPOSAL OF ALL LIGHT FIXTURES (INCLUDING FLUORESCENT LIGHT FIXTURES).
5. PROVIDE 90 MINUTE BATTERY BACKUP FOR ALL EXIT SIGNS. CIRCUIT ALL EXIT SIGNS AS FOLLOWS:
BUILDING A - PWR-A-98
BUILDING C & F - PWR-C-19

KEYNOTES

E1	ALL POWER & CIRCUITING ASSOCIATED WITH LIFT TO REMAIN. REFER TO LEVEL ABOVE AND BID PACK 4D DRAWINGS FROM PREVIOUS CONSTRUCTION PHASE OF THIS BUILDING FOR POWER CONNECTION INFORMATION.
E7	PROVIDE LIGHTING INVERTER TOTAL 115-550-1" OR APPROVED EQUAL FOR BRANCH CIRCUIT EMERGENCY LIGHTING. INVERTER SHALL BE MOUNTED IN ACCESSIBLE LOCATION EITHER ABOVE ACCESSIBLE CEILING OR IN ADJACENT BACK OF HOUSE SPACE HIGH ON WALL. REFER TO 8/25-EA-000 FOR EXACT WIRING CONFIGURATION WITH LIGHTING CONTROL AND INVERTER SYSTEM.
E9	PROVIDE TOLP11 (OR APPROVED EQUAL) CURRENT LIMITING FEED PROTECTED BY TOLCB-10A (OR APPROVED EQUAL) 10-AMP CURRENT LIMITING CIRCUIT BREAKER FOR TRACK LIGHTING SECTIONS AS INDICATED PER PLAN.
K1	ALL LIGHTING AND CONTROLS CIRCUITING ASSOCIATED WITH LIFT TO REMAIN. REFER TO LEVEL ABOVE FOR MORE INFORMATION.



ALTRERRA east west partners
MOUNTAIN COMPANY

2305 Mount Werner Circle
Steamboat Springs, CO 80487

Gensler

1225 17th Street
Suite 150
Denver, CO 80202
United States
Tel 303.595.8585
Fax 303.825.6823

me
engineers

14143 Denver West Pkwy
Suite 300
Golden, CO
United States
Tel 303.421.6655

REVIEWED
FOR
CODE
COMPLIANCE
09/23/2022

Date	Description
1 05/20/2022	ISSUE FOR CONSTRUCTION
2 06/27/2022	BULLETIN 1

Seal / Signature



Project Name

Steamboat Base Village
Redevelopment

Project Number

003.7835.000

Description

LIGHTING PLAN - LEVEL 03

Scale

1/8" = 1'-0"

2B-E1.301

